

V&V Reference Report

L2 ASCDS Version : 10.2.4

Observation 16015 - L2 Version 1
Chandra X-Ray Center

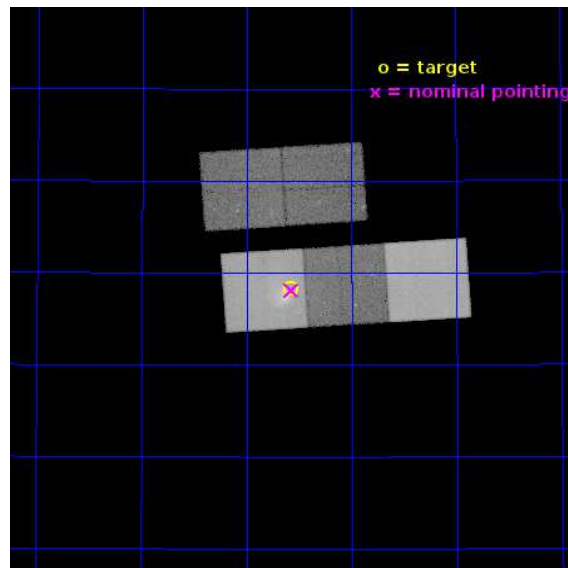
L2 Processing Date : Sep 4 2014

Contents

1	Front	2
2	OBI	3
2.1	OBI	3
2.1.1	Images	3
2.1.2	Bias	3
2.1.3	Parameters	4
2.1.4	Events	4
2.2	Compared Parameters	5
2.3	Aspect	6
2.4	Star Slots	9
2.4.1	Slot 3	9
2.4.2	Slot 4	10
2.4.3	Slot 5	11
2.4.4	Slot 6	12
2.4.5	Slot 7	13
2.5	FID Slots	14
2.5.1	Slot 0	14
2.5.2	Slot 1	15
2.5.3	Slot 2	16
A	Summary	17
A.1	Status	17
A.2	Comments	17

1 Front

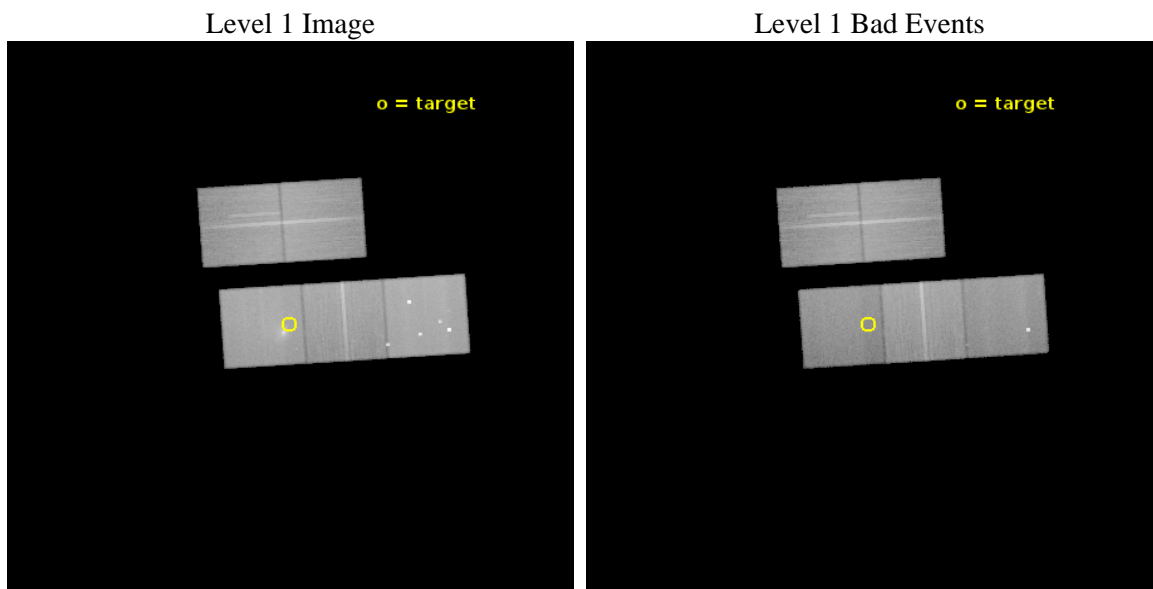
seq_num	601103	Sequence number
obs_id	16015	Observation id
title	A Study of Hydrodynamic Instabilities in the Major Merger of Galaxy Groups NGC7618 and UGC12491	Proposal title
observer	Dr. Marie Machacek	Principal investigator
object	UGC12491	Source name
dtcycle	0	
cycle	P	events from which exps? Prim/Second/Both
ra_targ	349.646	Observer's specified target RA [deg]
dec_targ	42.971	Observer's specified target Dec [deg]
ra_nom	349.64342431098	Nominal RA [deg]
dec_nom	42.968530128362	Nominal Dec [deg]
roll_nom	176.15838970399	Nominal Roll [deg]
revision	1	Processing version of data
ontime	49060.600377321	Sum of GTIs [s]
livetime	48419.587515503	Livetime [s]
ontime2	49048.036255956	Sum of GTIs [s]
ontime3	49060.600377321	Sum of GTIs [s]
ontime5	49060.600377321	Sum of GTIs [s]
ontime6	49057.459326923	Sum of GTIs [s]
ontime7	49060.600377321	Sum of GTIs [s]
l2events	584244	Number of level 2 events



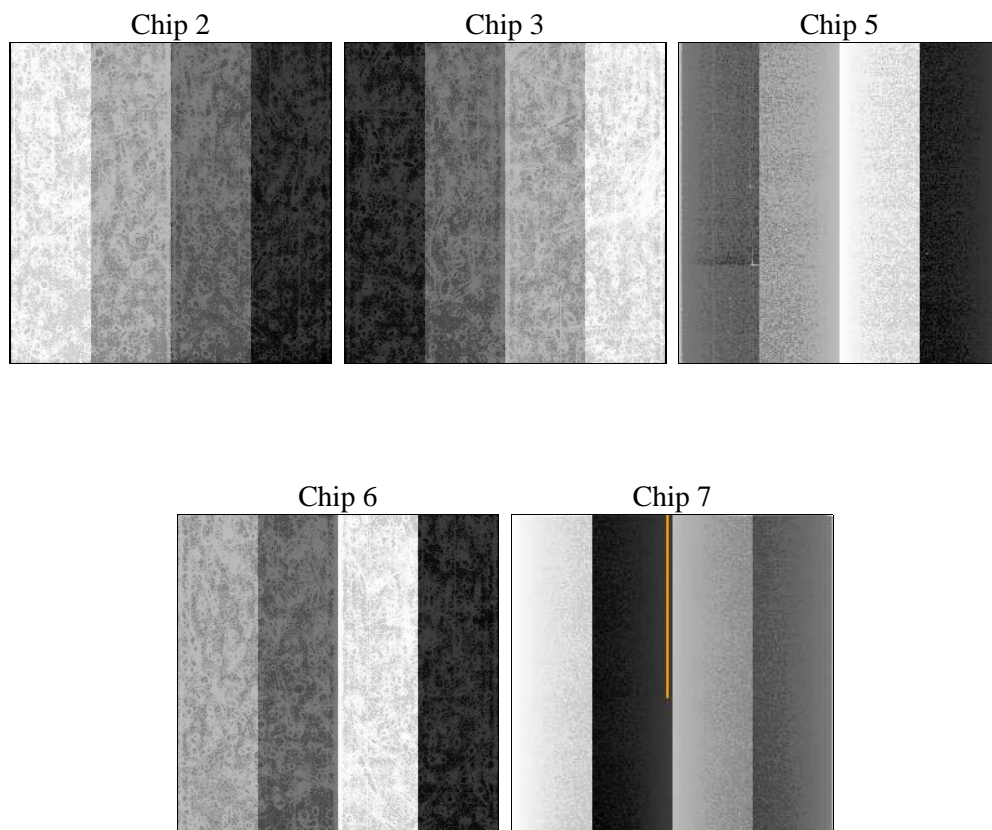
2 OBI

2.1 OBI

2.1.1 Images



2.1.2 Bias



2.1.3 Parameters

obi_num	0	Obi number	sched_exp_time	49000.000000	[s] Scheduled observation exposure time
ascdsver	10.2.4	Processing system revision	ontime	49060.600377321	Sum of GTIs [s]
caldsver	4.6.3	 	ontime2	49048.036255956	Sum of GTIs [s]
date	2014-09-04T05:09:22	Date and time of file creation	ontime3	49060.600377321	Sum of GTIs [s]
revision	1	Processing version of data	ontime5	49060.600377321	Sum of GTIs [s]
			ontime6	49057.459326923	Sum of GTIs [s]
			ontime7	49060.600377321	Sum of GTIs [s]
			l1events	2130586	Number of level 1 events

2.1.4 Events

	ccd 2	ccd 3	ccd 5	ccd 6	ccd 7
level 1 events	385080	364275	544623	391818	444790
rejected events	342820	324106	256691	342552	213626
rejected %	89%	88%	47%	87%	48%

	ccd 2	ccd 3	ccd 5	ccd 6	ccd 7
grade 0 events	17071	16448	44951	21150	29975
	4%	4%	8%	5%	6%
grade 1 events	193	193	1543	218	704
	0%	0%	0%	0%	0%
grade 2 events	9612	8030	92239	10002	53303
	2%	2%	16%	2%	11%
grade 3 events	4019	4114	10555	4450	21250
	1%	1%	1%	1%	4%
grade 4 events	4232	4000	10247	4451	20895
	1%	1%	1%	1%	4%
grade 5 events	11012	13530	36610	13841	39411
	2%	3%	6%	3%	8%
grade 6 events	7331	7581	129969	9216	105772
	1%	2%	23%	2%	23%
grade 7 events	331610	310379	218509	328490	173480
	86%	85%	40%	83%	39%

2.2 Compared Parameters

Parameter	Planned	Actual	Parameter	Planned	Actual
Instrument	ACIS	ACIS	Obspar format version number	7	7
Detector	ACIS-23567	ACIS-23567	Obspar file type	PREDICTED	ACTUAL
Grating	NONE	NONE	Obspar update status	NONE	UPDATED
Data mode	VFAINT	VFAINT	Number of optional ACIS chips dropped	0	0
Observation mode	POINTING	POINTING	On-chip summing requested	N	N
[deg] Pointing RA	349.676858	349.6434243109752	Subarray requested	NONE	NONE
[deg] Pointing Dec	42.980936	42.96853012836243	Alternating exposures requested	N	N
[deg] Pointing Roll	175.978963	176.1583897039853	[s] Primary exposure time	0.000000	3.1
[mm] SIM focus pos	-0.684267	-0.6828225247311905			
[mm] SIM defocus	0	0.001444936568705701			
[mm] SIM translation stage pos	-190.132523	-190.1425803651734			
[mm] SIM translation stage offset	0	0.01005778216563158			
[s] Observation start time (MET)	526095304.184000	526093674.07544			
Observation start date	2014-09-03T01:33:57	2014-09-03T01:07:54			
[s] Observation end time (MET)	526144304.184000	526145203.9033			
Observation end date	2014-09-03T15:10:37	2014-09-03T15:26:43			
Read mode	TIMED	TIMED			

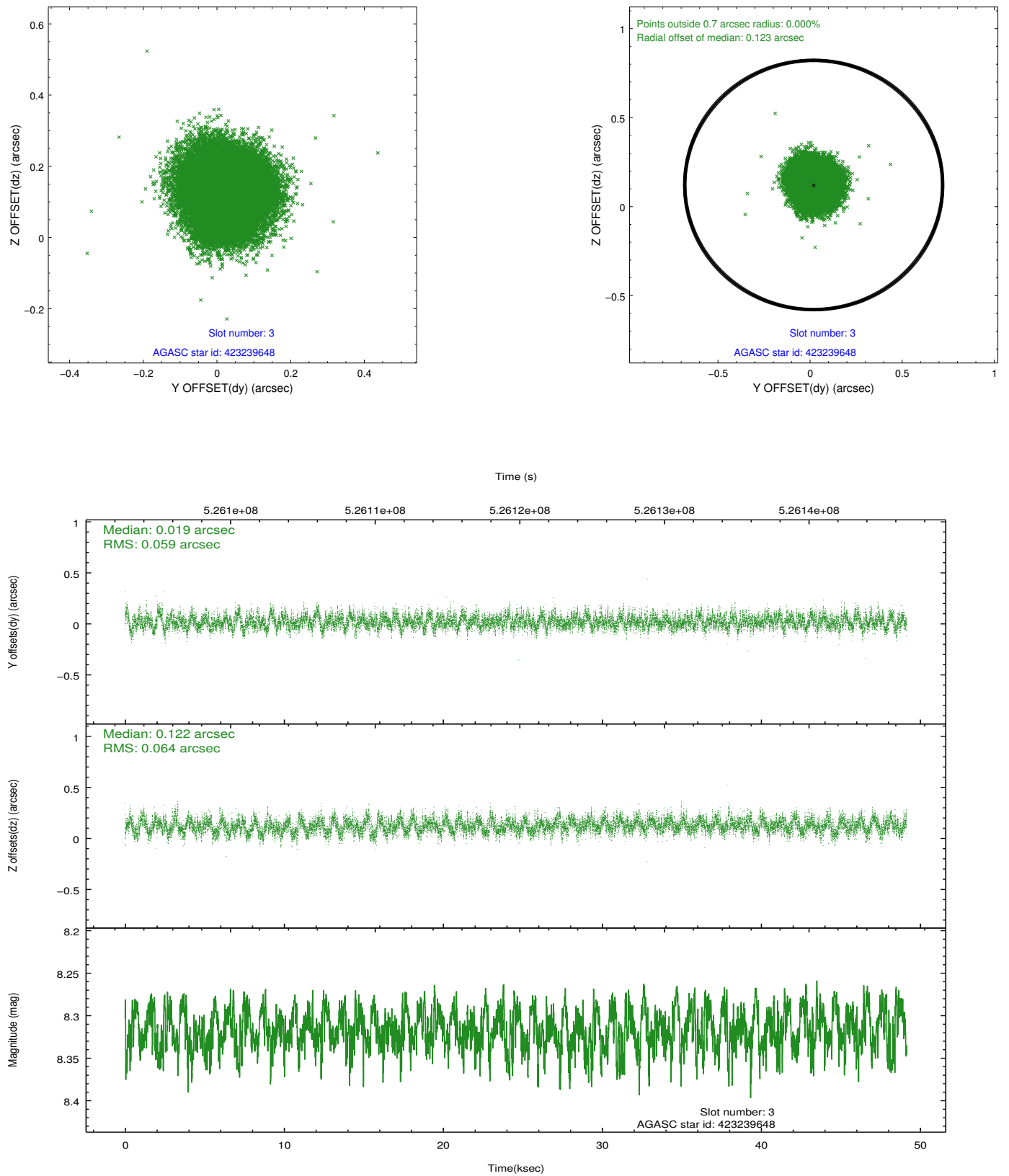
2.3 Aspect

Slot Statistics

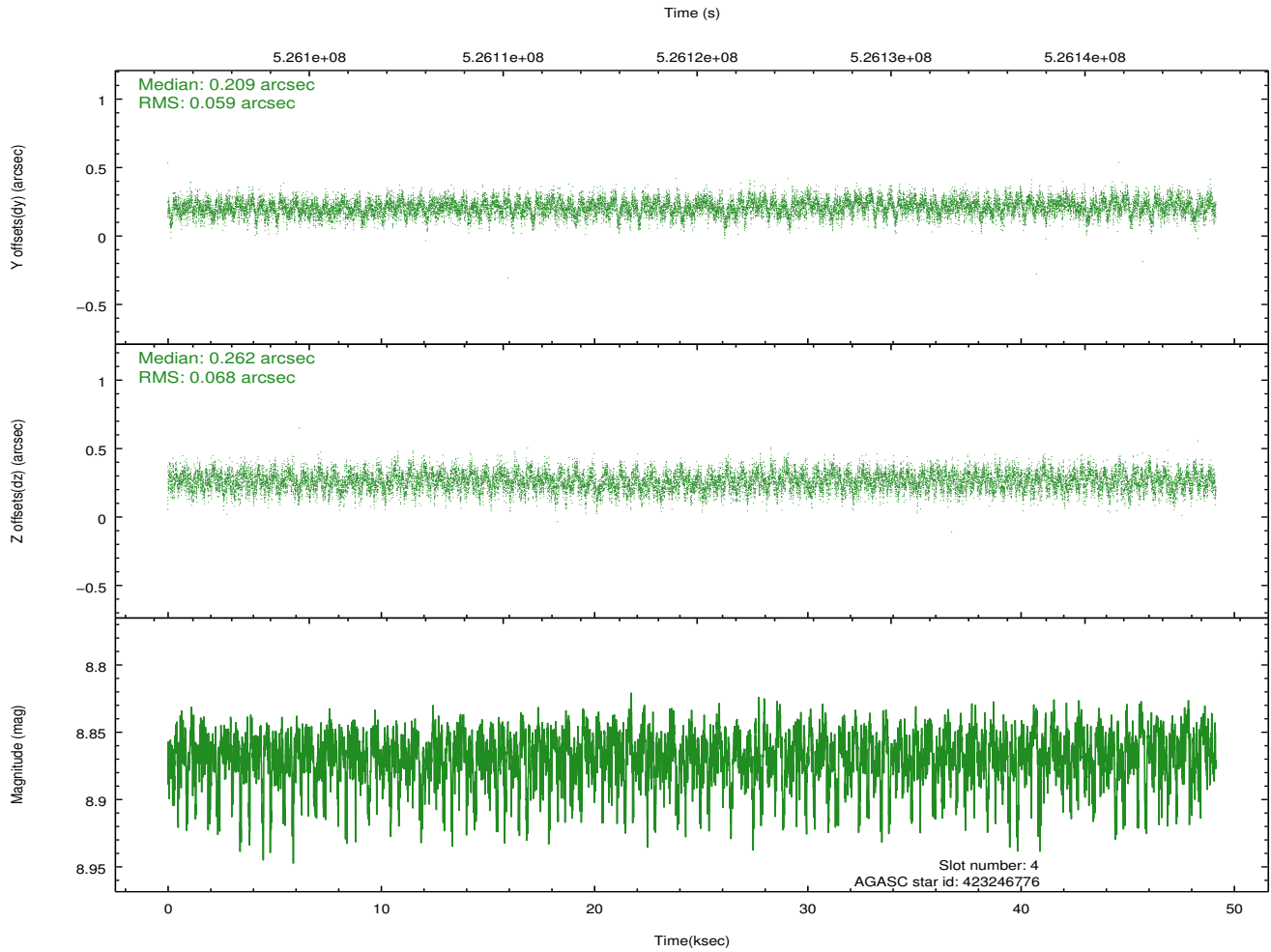
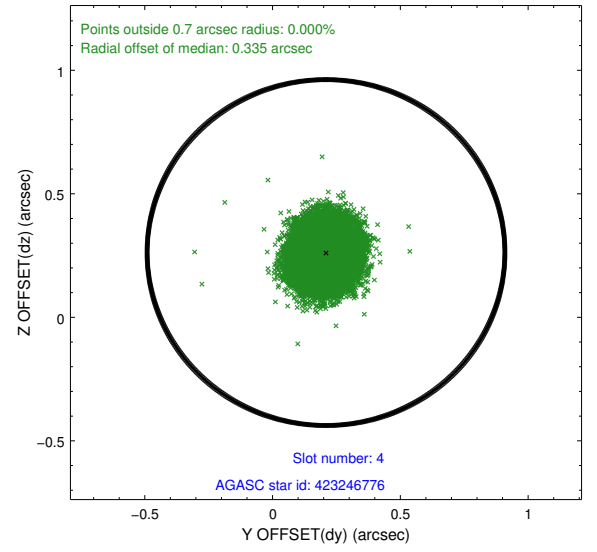
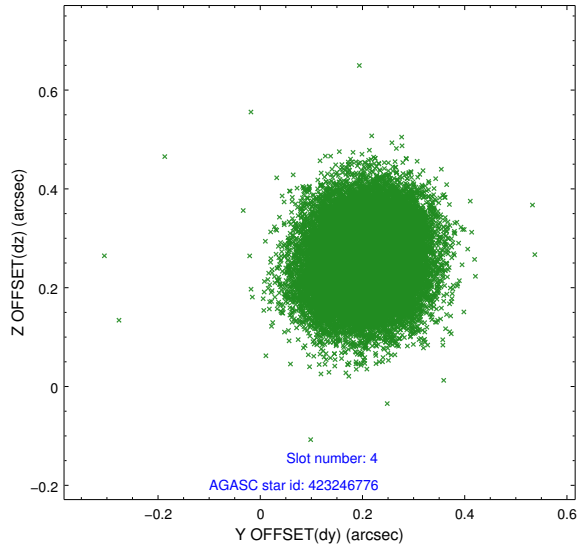
slot	status	id	mag	n_pts	med_dy	med_dz	dr1	dr2	ra	dec	mean_y	mean_z
0	FID	ACIS-S-4	7.08	11988	0.305	-0.008	0.021	0.043	0.000000	0.000000	2133.21	166.20
1	FID	ACIS-S-5	7.10	11989	-0.356	-0.013	0.033	0.056	0.000000	0.000000	-1833.65	159.49
2	FID	ACIS-S-6	7.21	11984	0.022	0.035	0.014	0.024	0.000000	0.000000	381.18	803.38
3	GUIDE	423239648	8.32	23966	0.019	0.122	0.093	0.147	349.461087	43.553312	706.54	-2015.84
4	GUIDE	423246776	8.87	23948	0.209	0.262	0.096	0.154	349.847786	43.424046	-333.02	-1622.65
5	GUIDE	424938224	8.83	23953	0.248	0.259	0.114	0.183	350.059175	43.180030	-949.94	-787.29
6	GUIDE	422717960	7.38	23970	-0.517	-0.692	0.087	0.141	348.955578	42.579001	1806.10	1569.21
7	GUIDE	423248432	8.87	23944	0.042	0.050	0.084	0.138	349.086899	43.199426	1600.64	-680.92

2.4 Star Slots

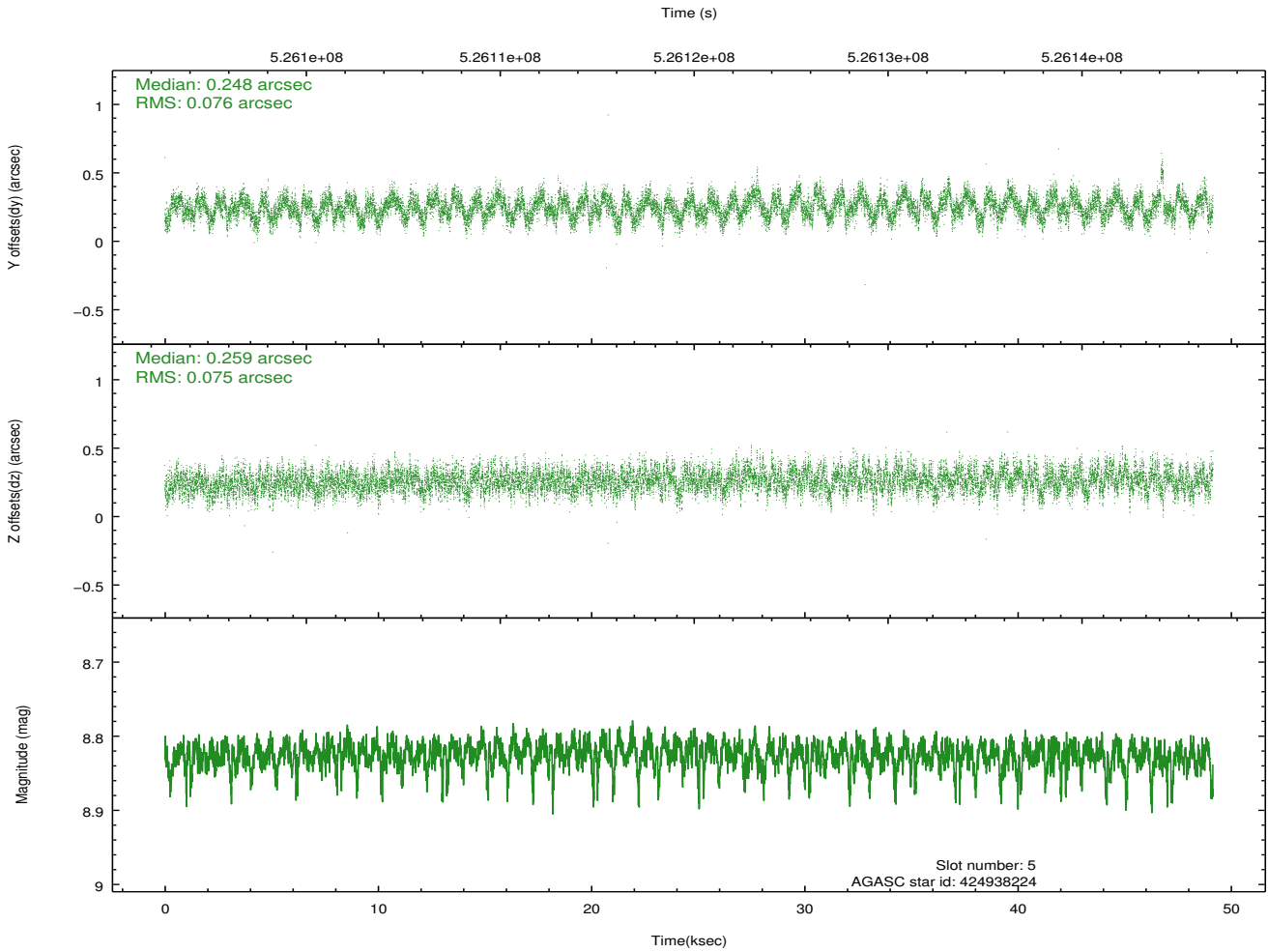
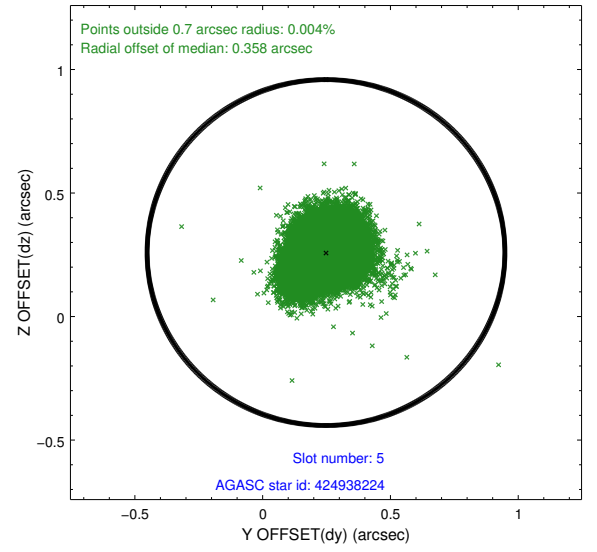
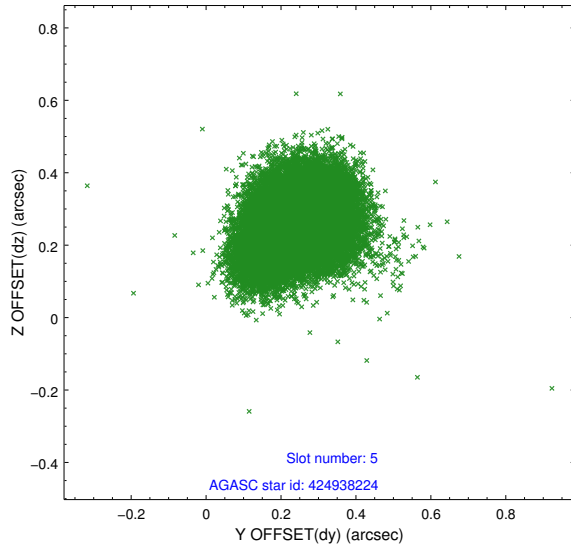
2.4.1 Slot 3



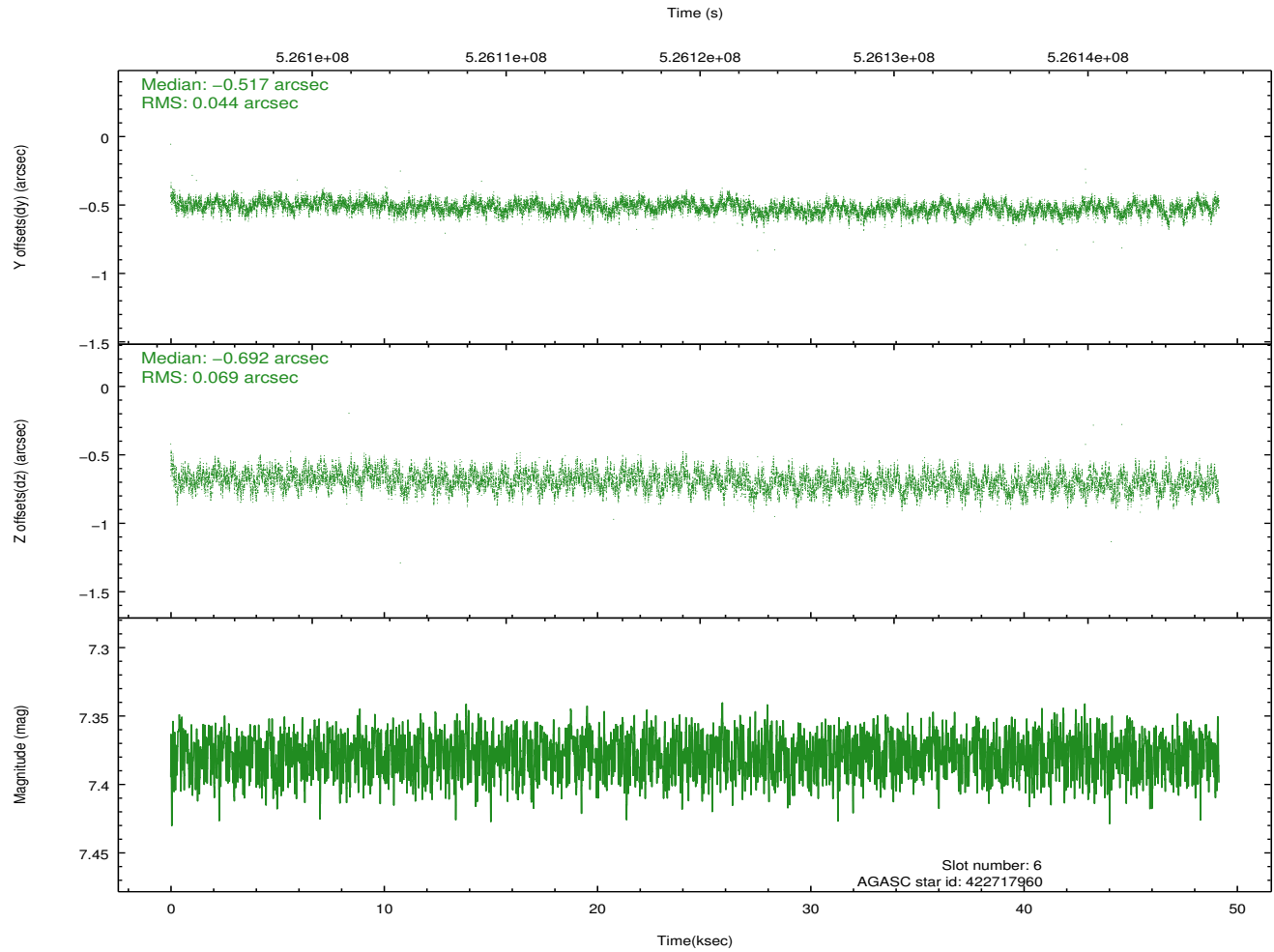
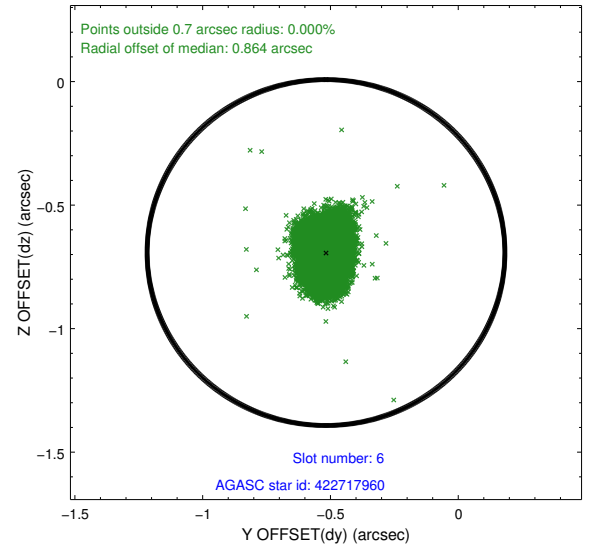
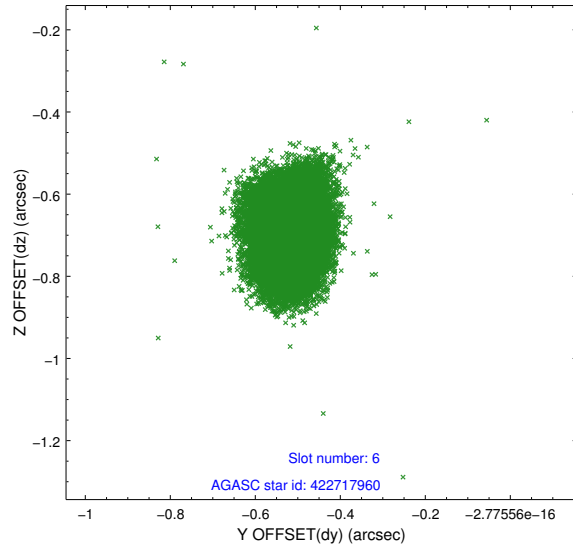
2.4.2 Slot 4



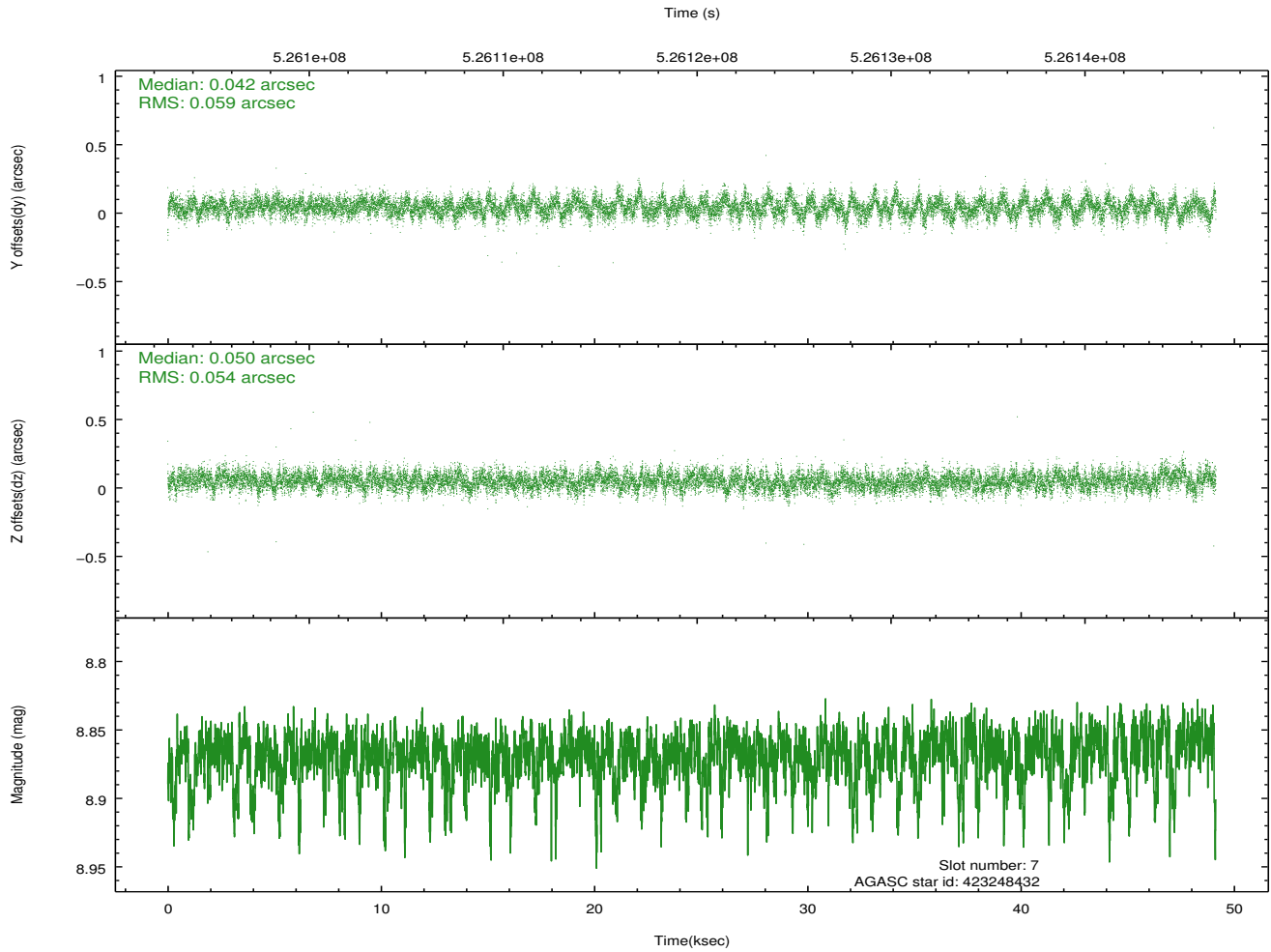
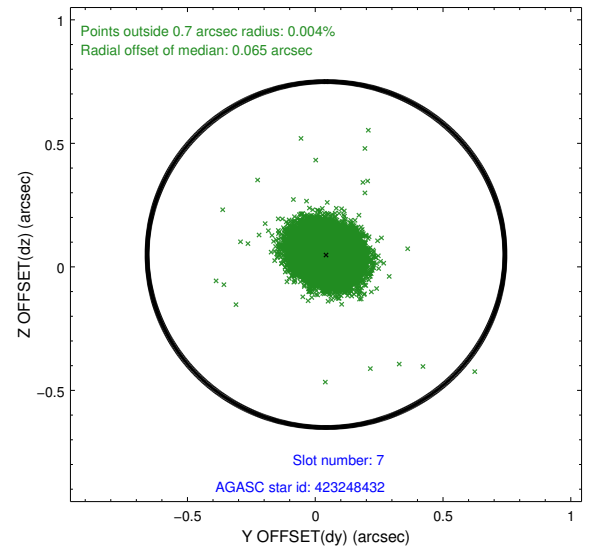
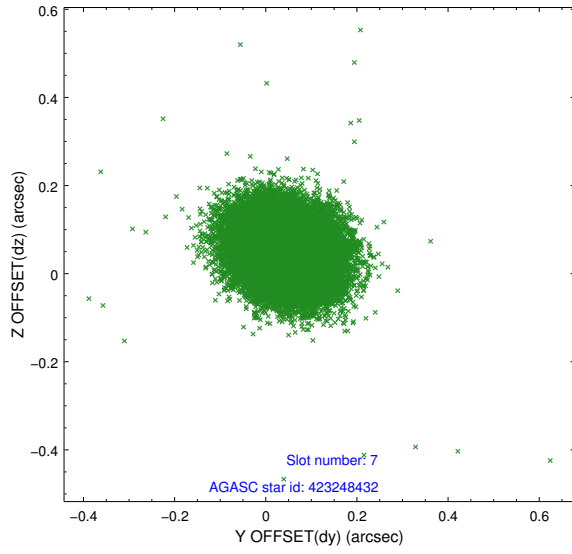
2.4.3 Slot 5



2.4.4 Slot 6

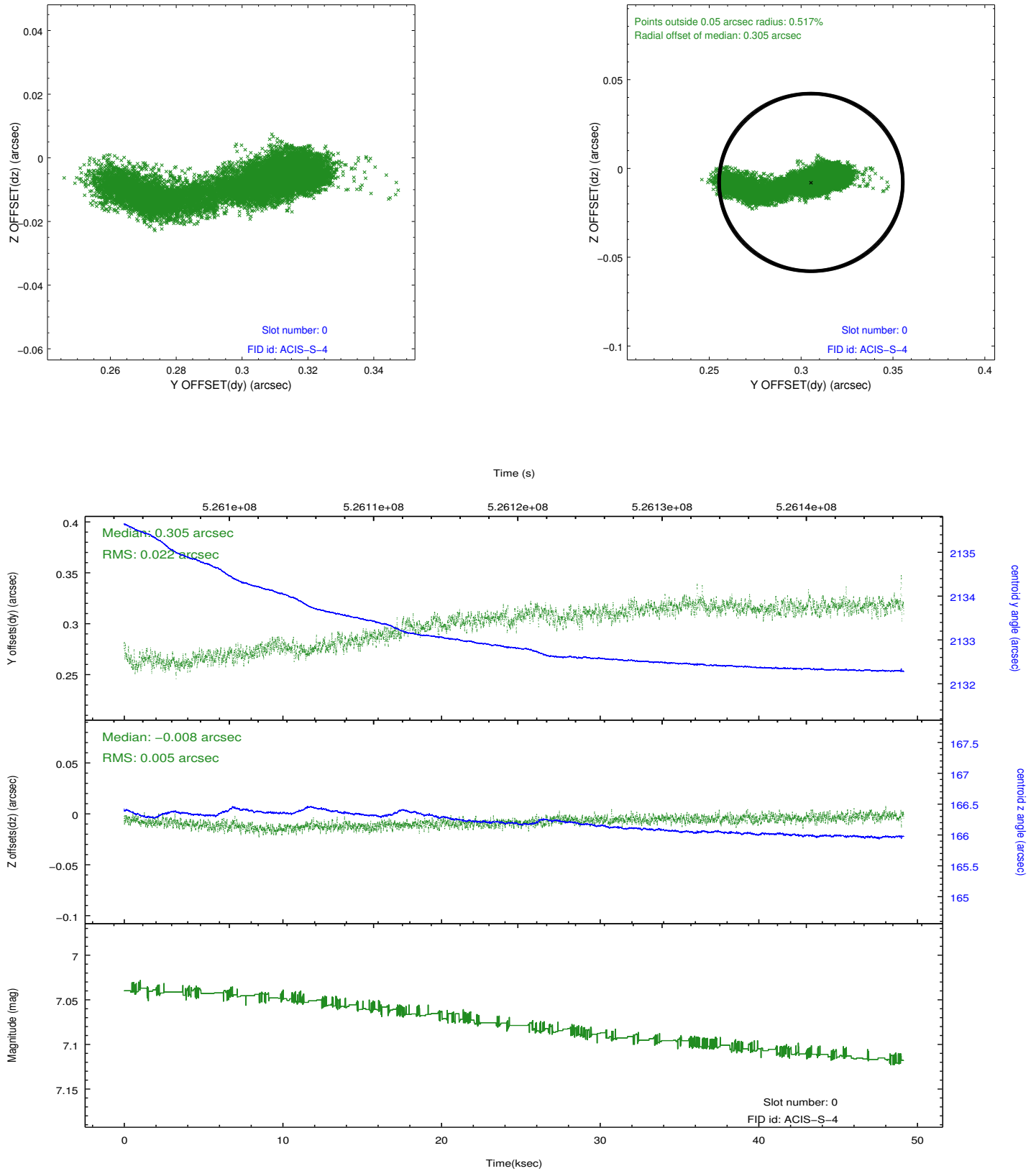


2.4.5 Slot 7

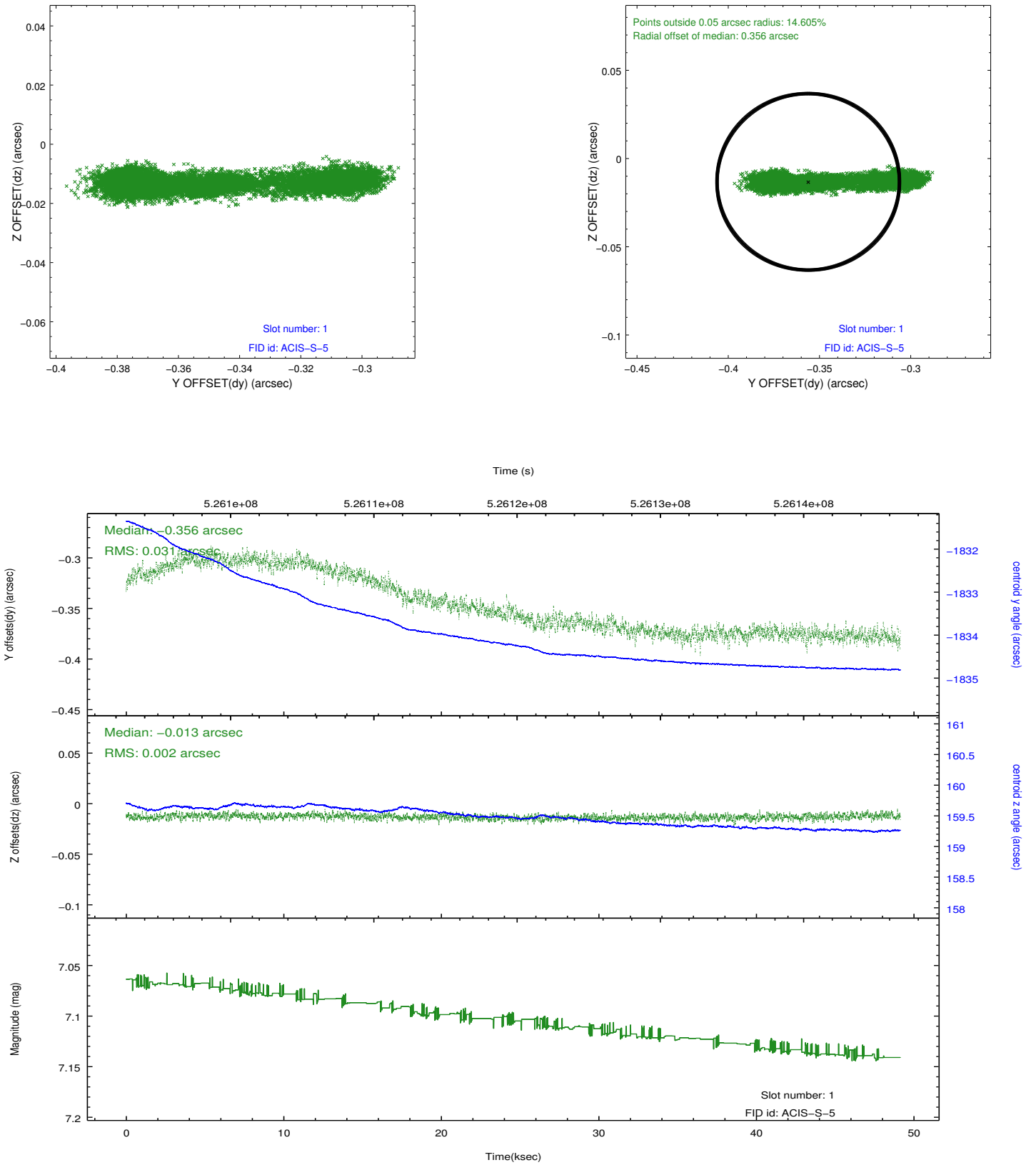


2.5 FID Slots

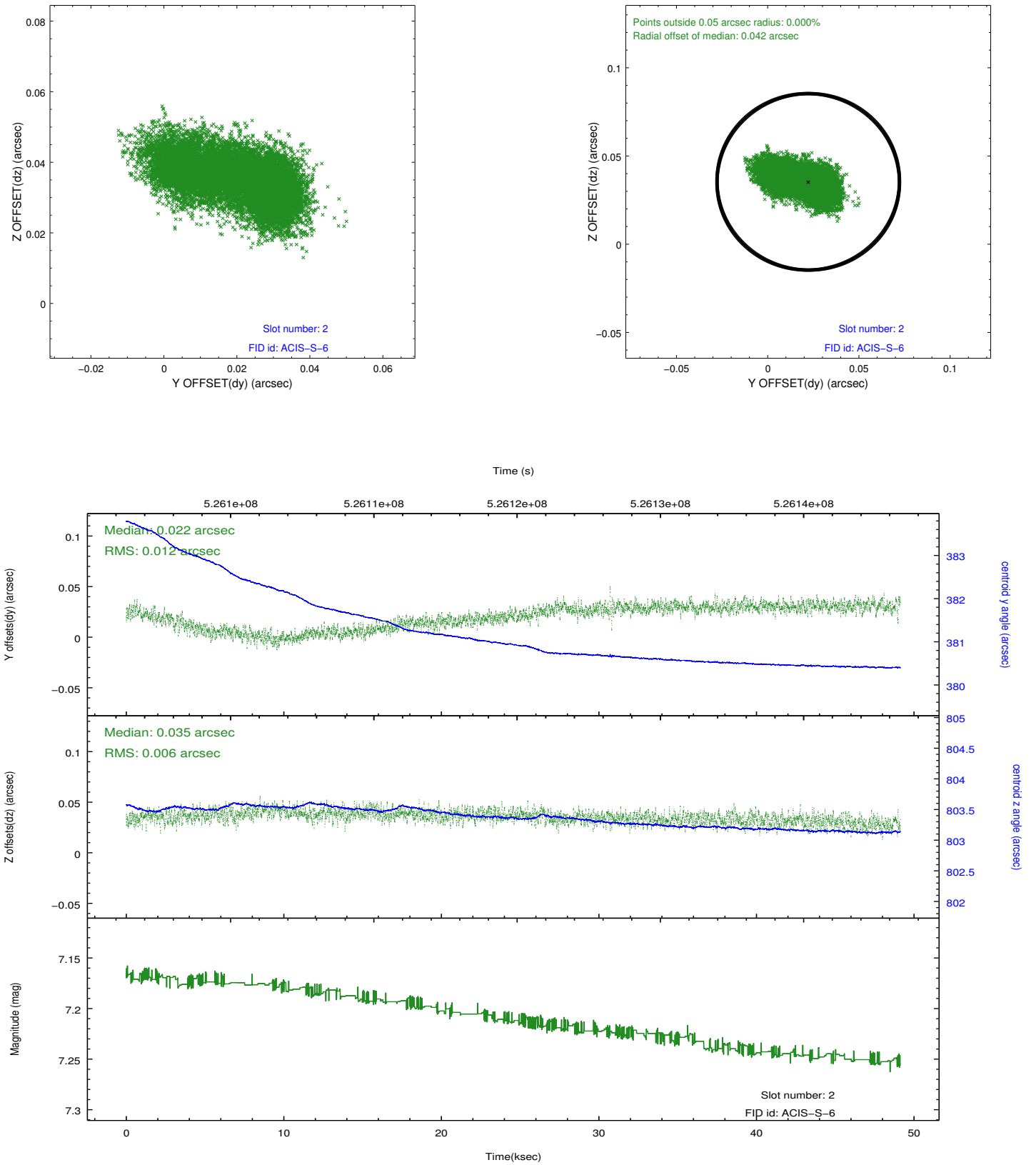
2.5.1 Slot 0



2.5.2 Slot 1



2.5.3 Slot 2



A Summary

A.1 Status

V&V Scientist	Joy Nichols
V&V Date (YYYY-MM-DD)	2014.09.04
V&V Edition	1
V&V Disposition and Status	OK
V&V Charge Time	49.060600377321

A.2 Comments