

V&V Reference Report

L2 ASCDS Version : 10.2.4

Observation 15991 - L2 Version 1
Chandra X-Ray Center

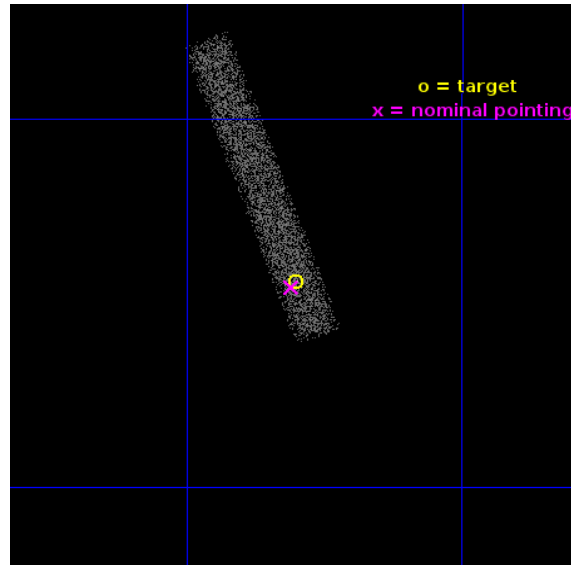
L2 Processing Date : Jul 15 2014

Contents

1	Front	2
2	OBI	3
2.1	OBI	3
2.1.1	Images	3
2.1.2	Bias	3
2.1.3	Parameters	4
2.1.4	Events	4
2.2	Compared Parameters	5
2.3	Aspect	6
2.4	Star Slots	9
2.4.1	Slot 3	9
2.4.2	Slot 4	10
2.4.3	Slot 5	11
2.4.4	Slot 6	12
2.4.5	Slot 7	13
2.5	FID Slots	14
2.5.1	Slot 0	14
2.5.2	Slot 1	15
2.5.3	Slot 2	16
A	Summary	17
A.1	Status	17
A.2	Comments	17

1 Front

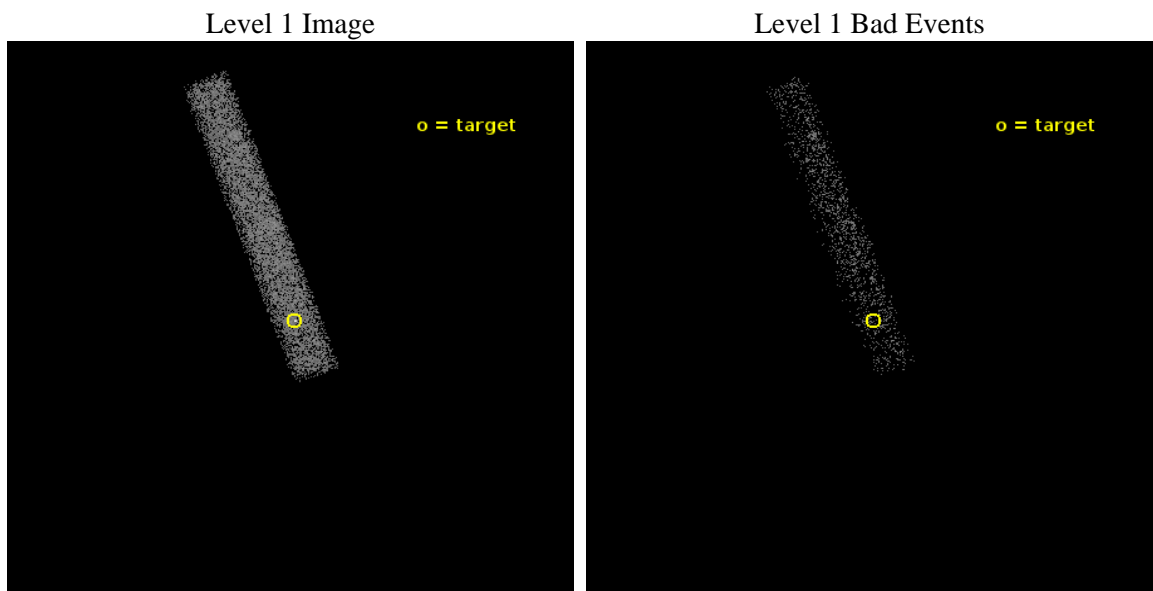
seq_num	502224	Sequence number
obs_id	15991	Observation id
title	What is the Magnetic Field of Magnetar Swift J1822.3-1606?	Proposa
observer	Professor Victoria Kaspi	Principal investigator
object	Swift J1822.3-1606	Source name
dtcycle	0	
cycle	P	events from which exps? Prim/Second/Both
ra_targ	275.575417	Observer's specified target RA [deg]
dec_targ	-16.07375	Observer's specified target Dec [deg]
ra_nom	275.57734038864	Nominal RA [deg]
dec_nom	-16.07624031018	Nominal Dec [deg]
roll_nom	249.82581338267	Nominal Roll [deg]
revision	1	Processing version of data
ontime	16069.199042201	Sum of GTIs [s]
livetime	14573.915329404	Livetime [s]
ontime7	16069.199042201	Sum of GTIs [s]
l2events	6868	Number of level 2 events



2 OBI

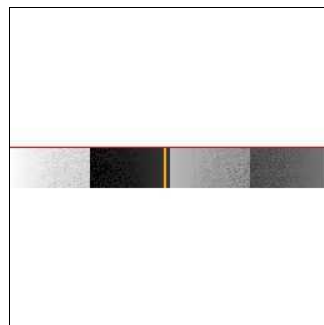
2.1 OBI

2.1.1 Images



2.1.2 Bias

Chip 7



2.1.3 Parameters

obi_num	0	Obi number	sched_exp_time	16000.000000	[s] Scheduled observation exposure time
ascdsver	10.2.4	Processing system revision	ontime	16069.199042201	Sum of GTIs [s]
caldsver	4.6.2	 	ontime7	16069.199042201	Sum of GTIs [s]
date	2014-07-15T14:53:26	Date and time of file creation	l1events	14079	Number of level 1 events
revision	1	Processing version of data			

2.1.4 Events

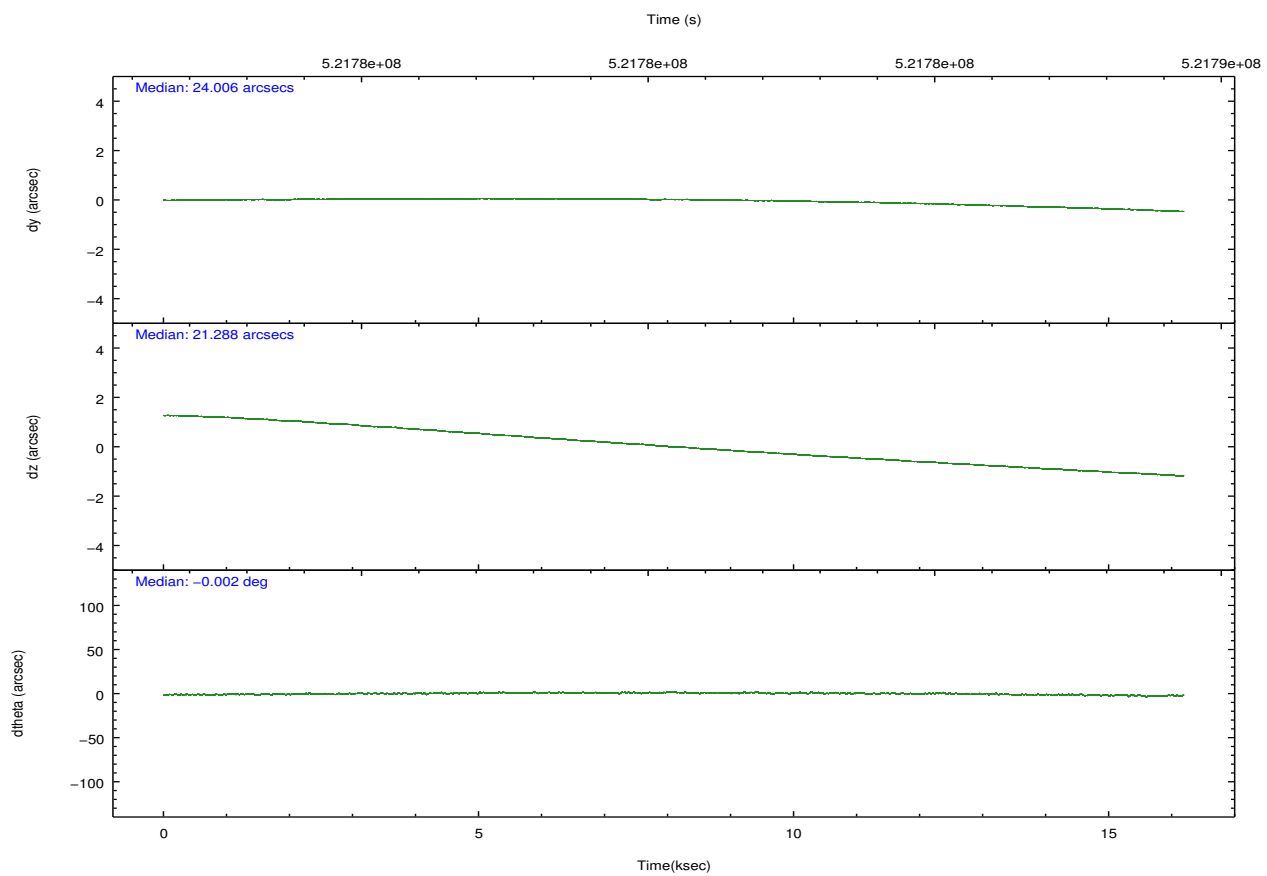
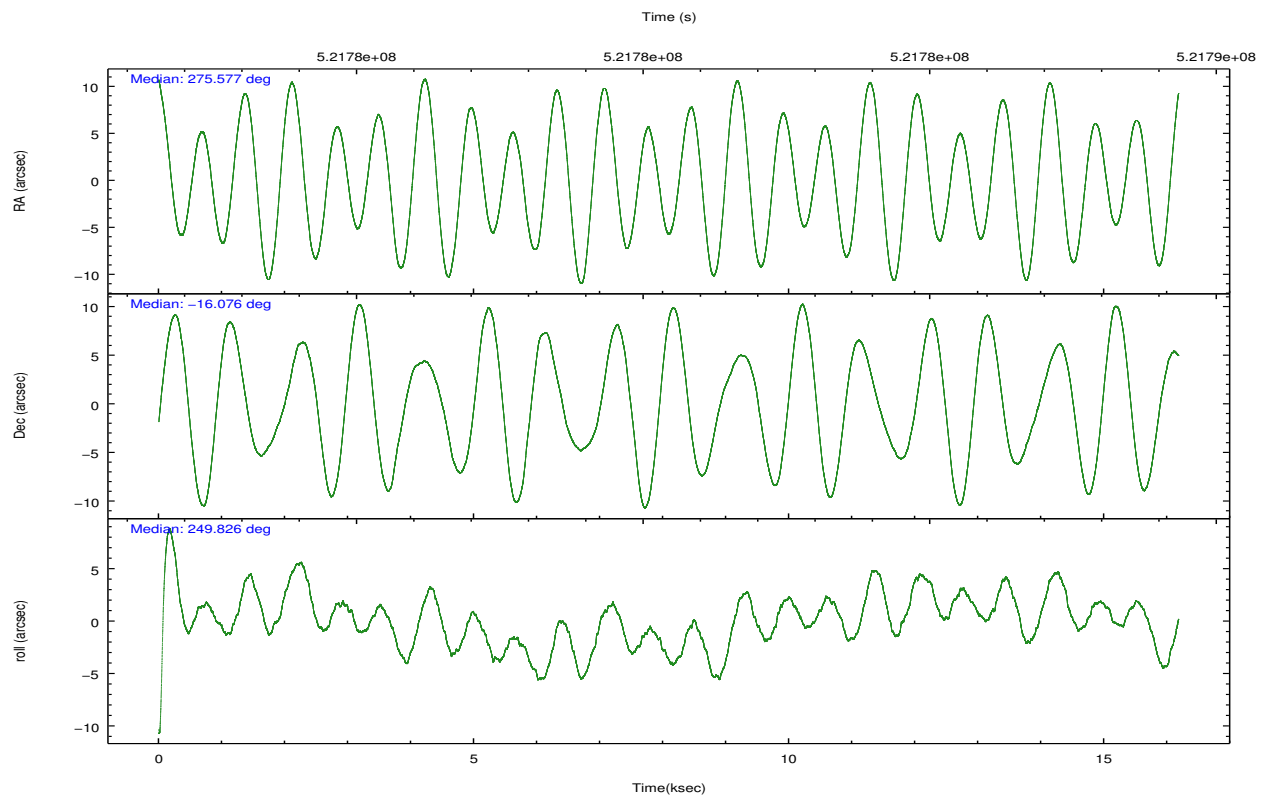
	ccd 7
level 1 events	14079
rejected events	6921
rejected %	49%

	ccd 7
grade 0 events	879
	6%
grade 1 events	22
	0%
grade 2 events	1408
	10%
grade 3 events	908
	6%
grade 4 events	916
	6%
grade 5 events	1411
	10%
grade 6 events	3047
	21%
grade 7 events	5488
	38%

2.2 Compared Parameters

Parameter	Planned	Actual	Parameter	Planned	Actual
Instrument	ACIS	ACIS	Obspar format version number	7	7
Detector	ACIS-7	ACIS-7	Obspar file type	PREDICTED	ACTUAL
Grating	NONE	NONE	Obspar update status	NONE	UPDATED
Data mode	VFAINT	VFAINT	Number of optional ACIS chips dropped	0	0
Observation mode	POINTING	POINTING	On-chip summing requested	N	N
[deg] Pointing RA	275.572095	275.5773403886411	Subarray requested	CUSTOM	1/8
[deg] Pointing Dec	-16.049279	-16.07624031017995	Subarray start row	449	449
[deg] Pointing Roll	249.667736	249.8258133826727	Subarray row count	128	128
[mm] SIM focus pos	-0.684267	-0.6828225247311905	Alternating exposures requested	N	N
[mm] SIM defocus	0	0.001444936568705701	[s] Primary exposure time	0.000000	0.4
[mm] SIM translation stage pos	-190.132523	-190.1400660498719			
[mm] SIM translation stage offset	0	0.00754346686406393			
[s] Observation start time (MET)	521772542.184000	521771293.93581			
Observation start date	2014-07-15T00:47:55	2014-07-15T00:28:13			
[s] Observation end time (MET)	521788542.184000	521789058.21179			
Observation end date	2014-07-15T05:14:35	2014-07-15T05:24:18			
Read mode	TIMED	TIMED			

2.3 Aspect

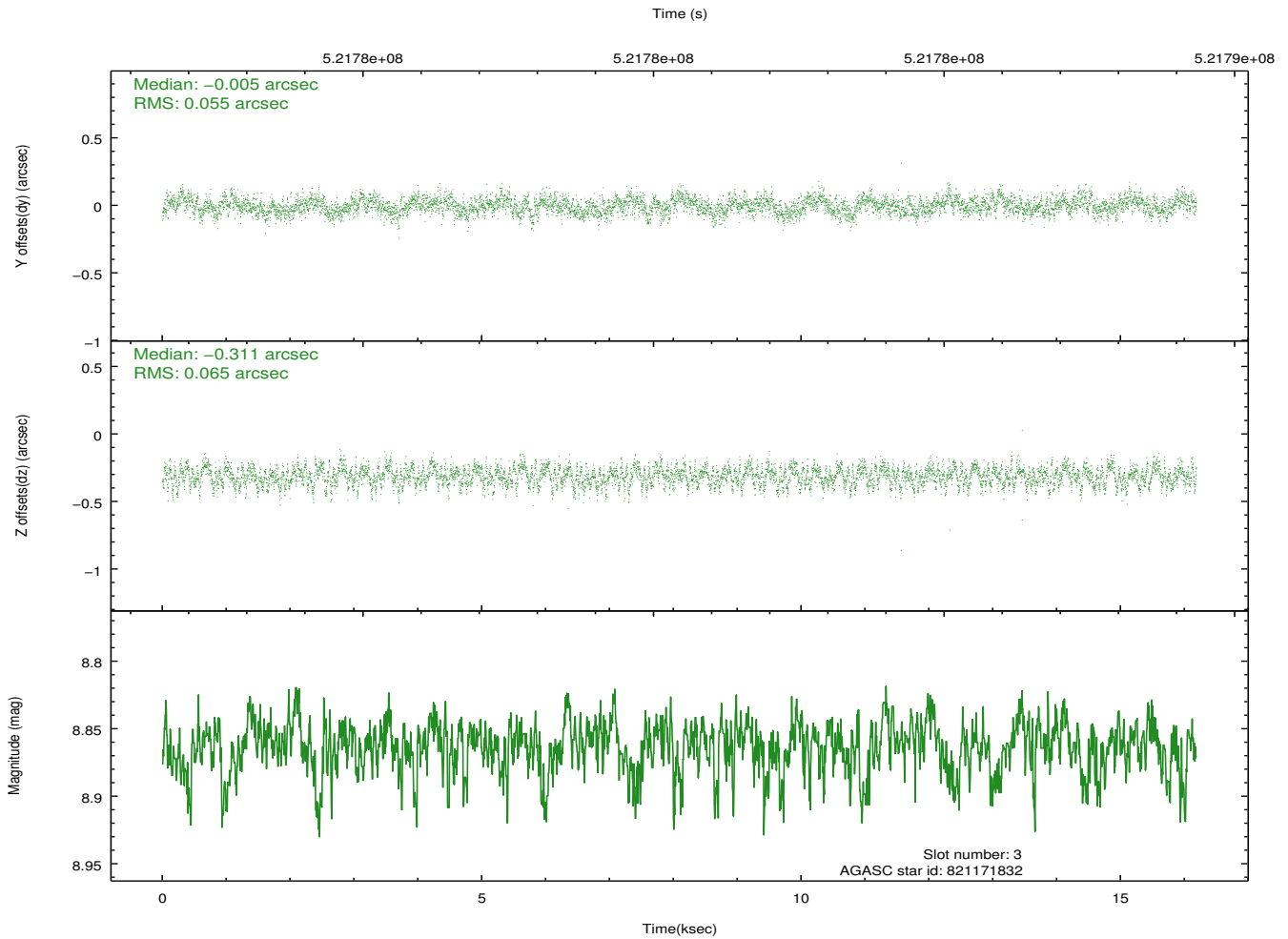
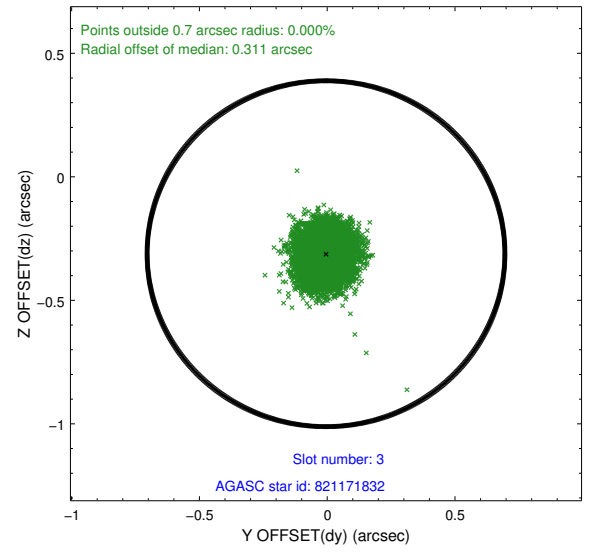
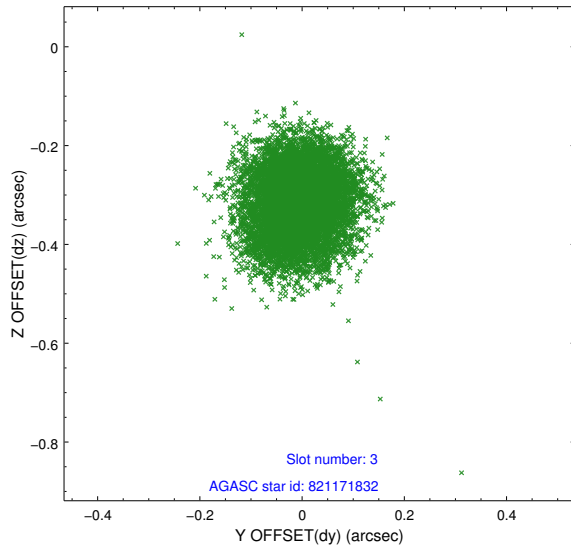


Slot Statistics

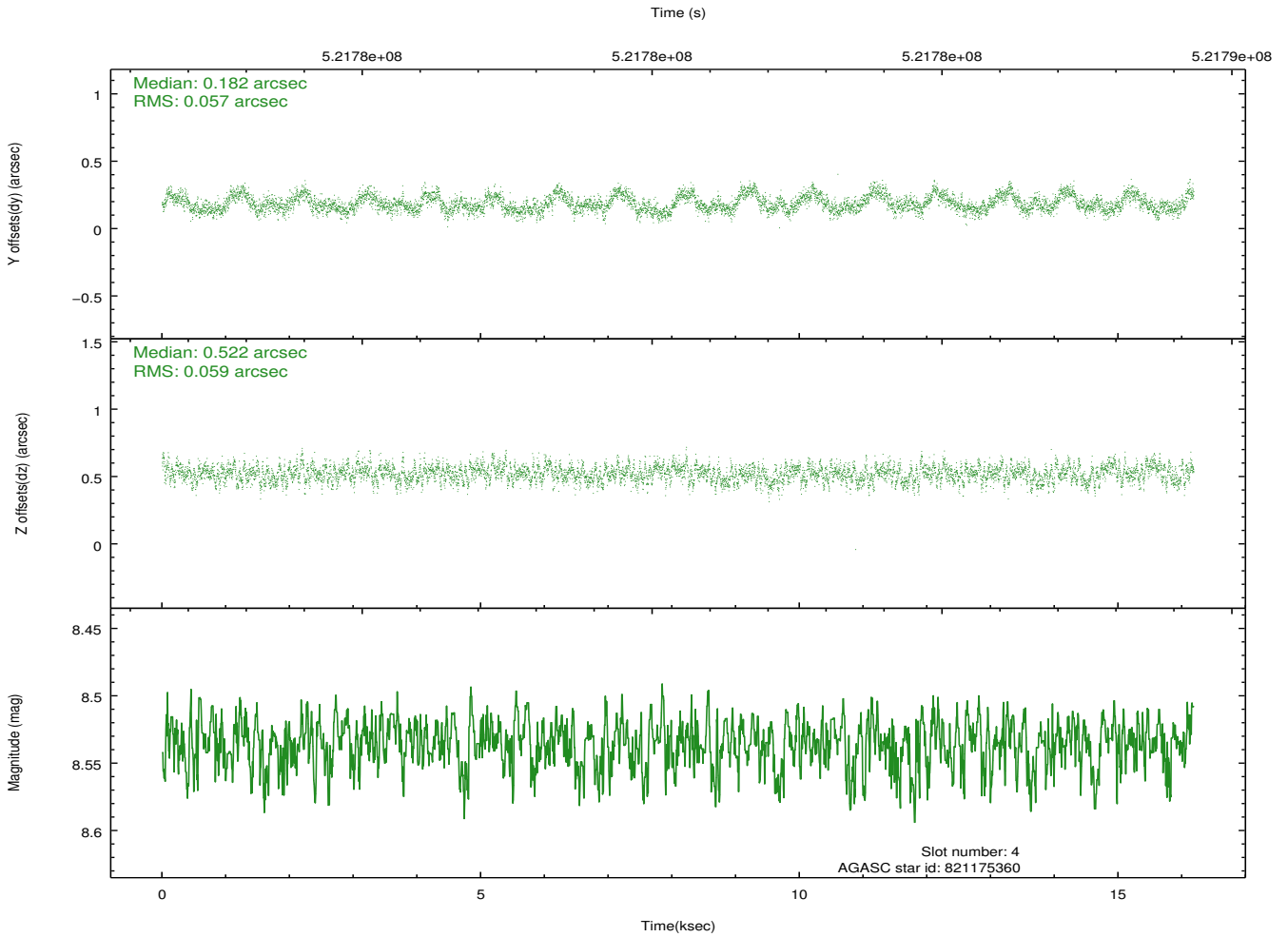
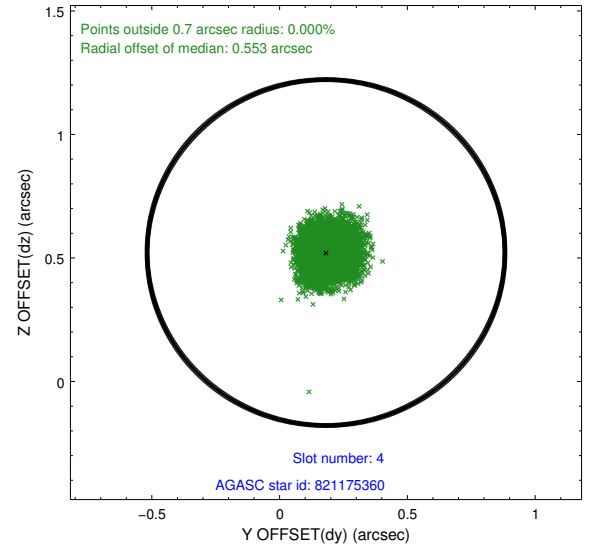
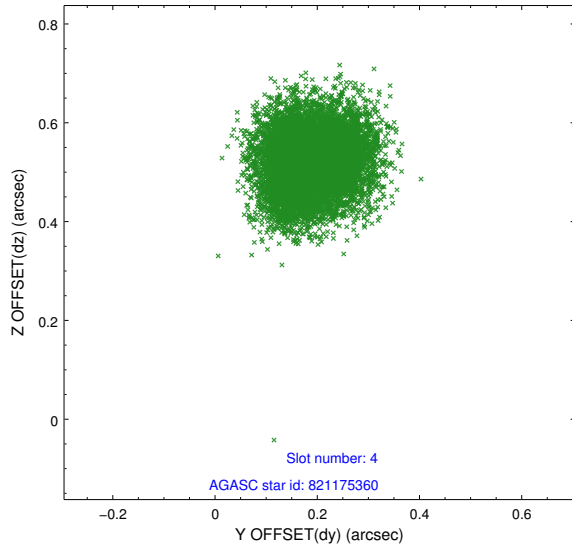
slot	status	id	mag	n_pts	med_dy	med_dz	dr1	dr2	ra	dec	mean_y	mean_z
0	FID	ACIS-S-1	7.03	3948	0.132	-0.001	0.016	0.039	0.000000	0.000000	918.91	-1738.55
1	FID	ACIS-S-2	6.95	3948	-0.165	-0.043	0.009	0.020	0.000000	0.000000	-777.14	-1743.33
2	FID	ACIS-S-6	7.16	3948	0.011	0.049	0.013	0.027	0.000000	0.000000	384.48	802.58
3	GUIDE	821171832	8.86	7892	-0.005	-0.311	0.092	0.144	275.792275	-15.610164	-1746.67	166.75
4	GUIDE	821175360	8.54	7894	0.182	0.522	0.088	0.137	275.121622	-15.398191	-1652.61	-2279.11
5	GUIDE	821178592	7.47	7895	0.065	0.082	0.072	0.120	274.768757	-16.375672	2071.45	-2191.61
6	GUIDE	821183768	9.21	7886	-0.125	-0.265	0.123	0.193	275.638665	-16.595886	1766.09	898.92
7	GUIDE	821181752	7.59	7895	-0.126	-0.019	0.070	0.112	275.331456	-16.373905	1385.73	-372.72

2.4 Star Slots

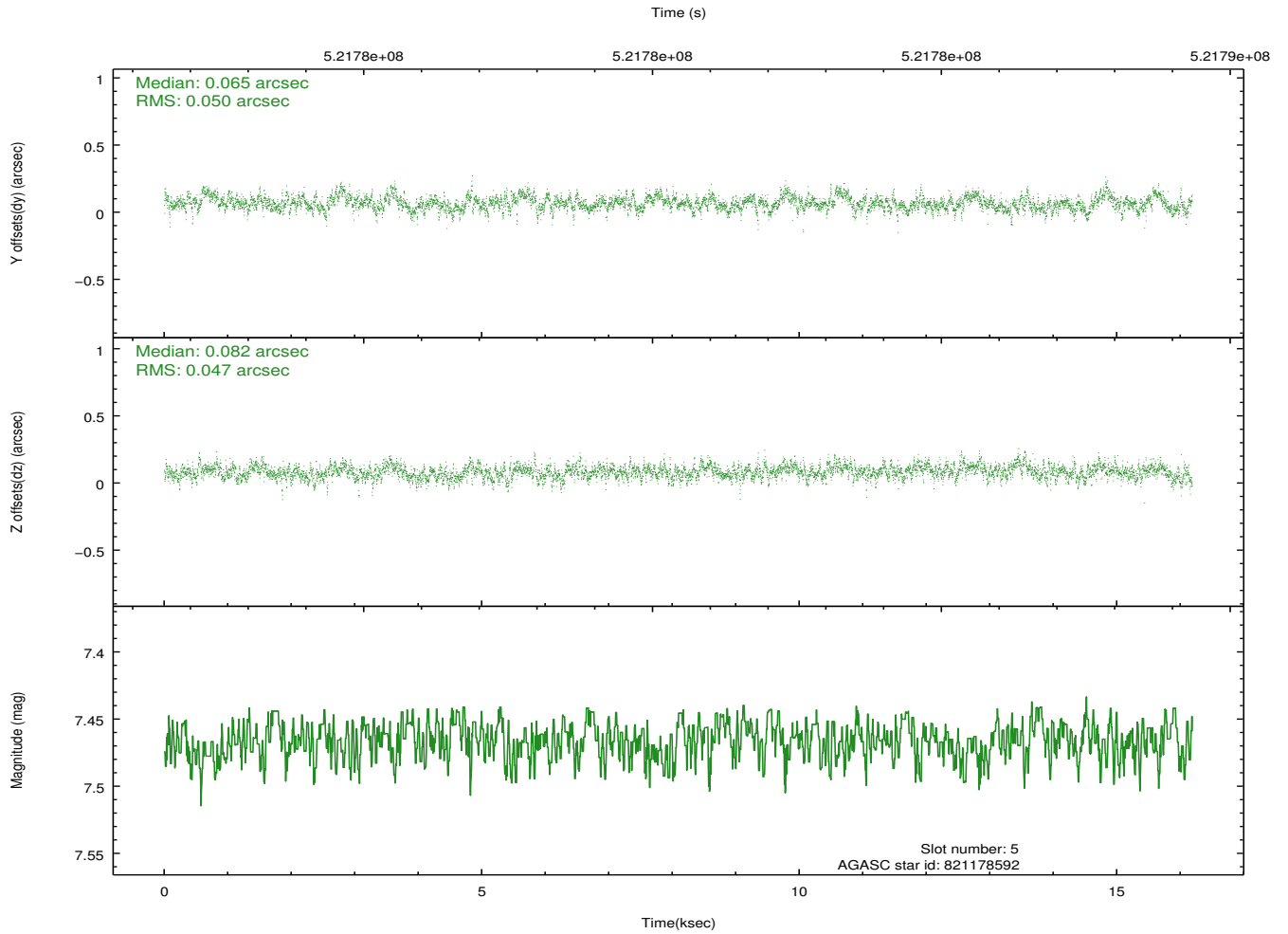
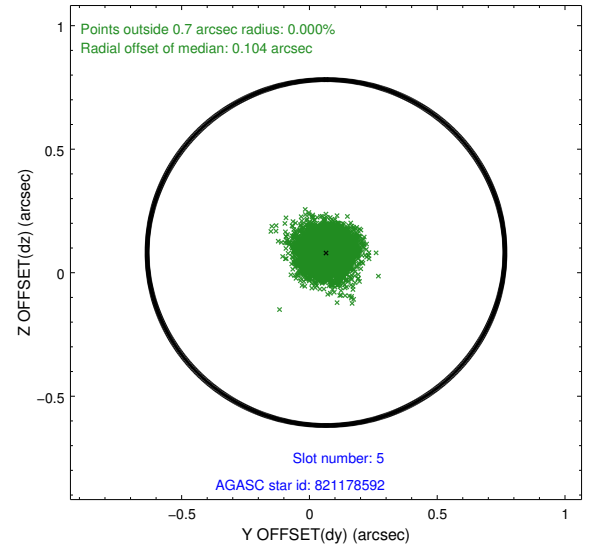
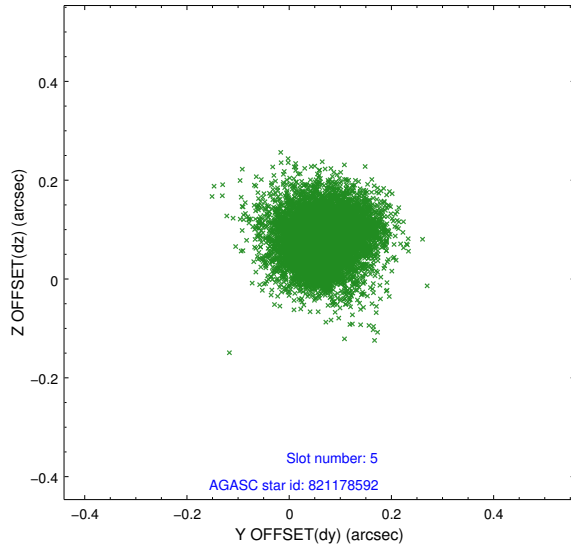
2.4.1 Slot 3



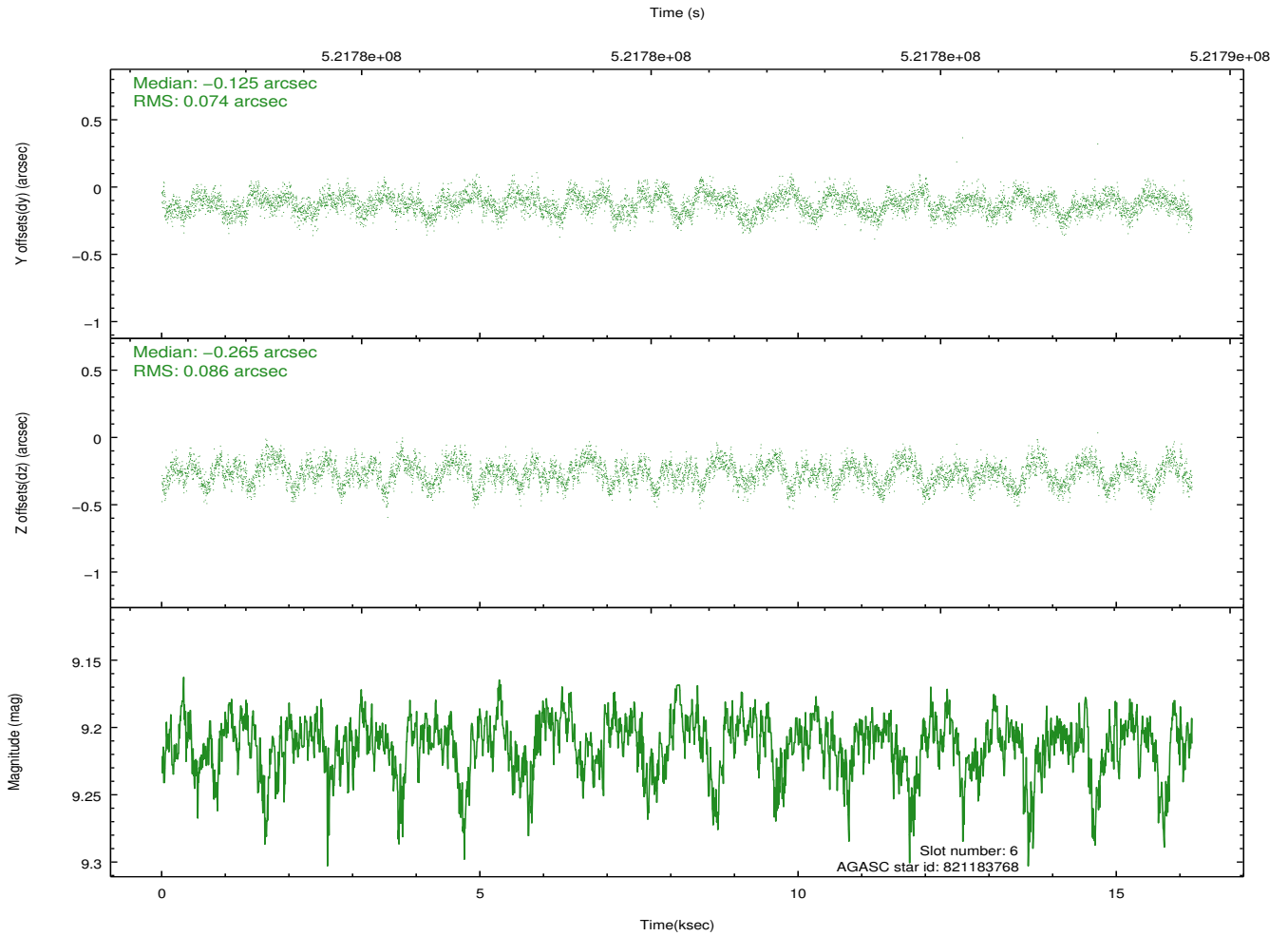
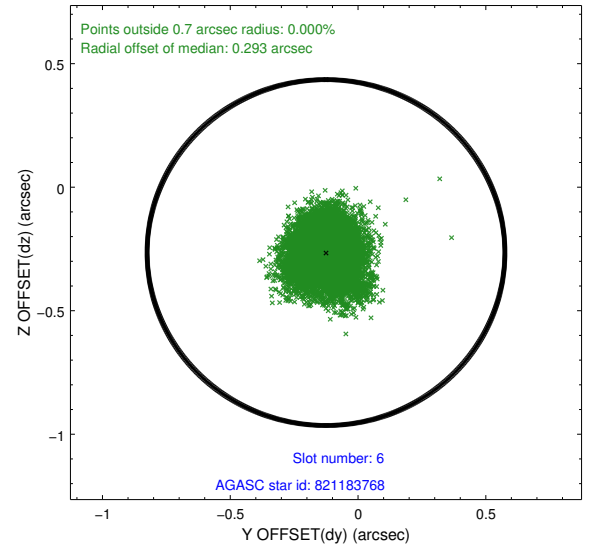
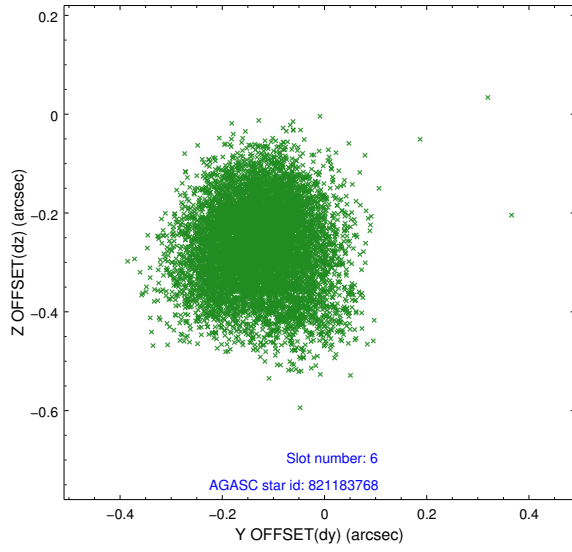
2.4.2 Slot 4



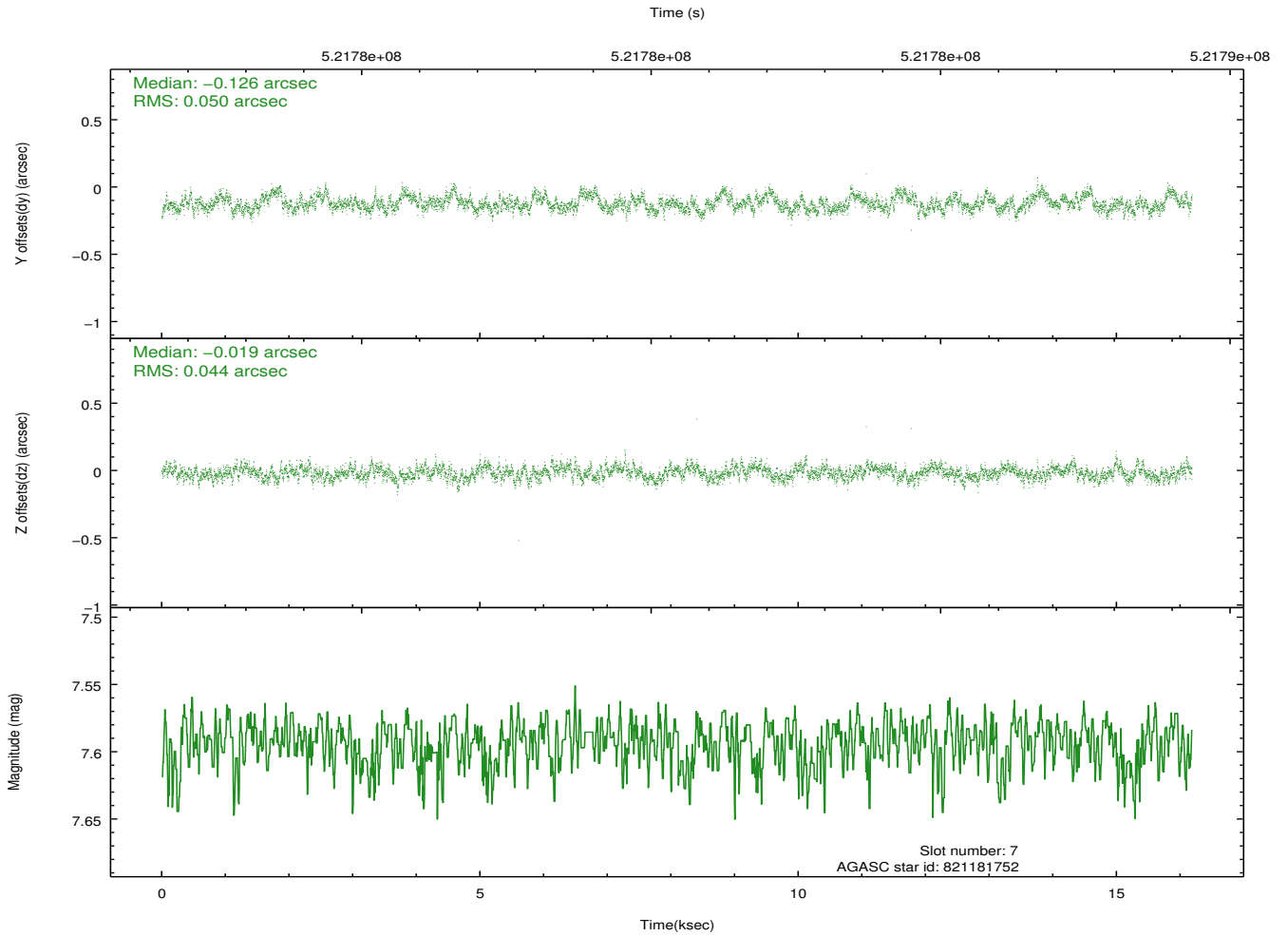
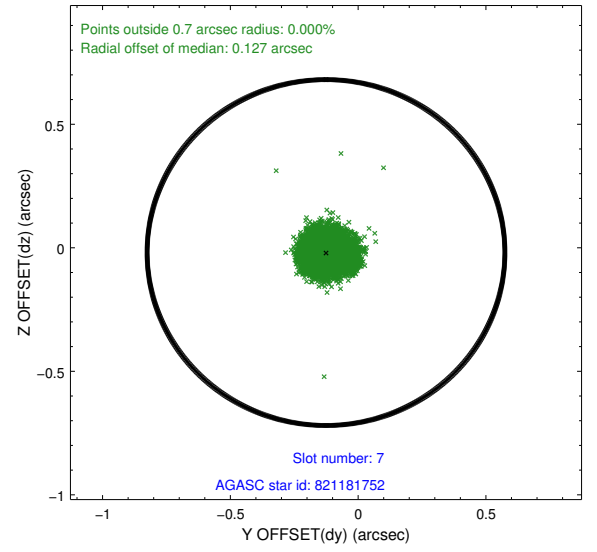
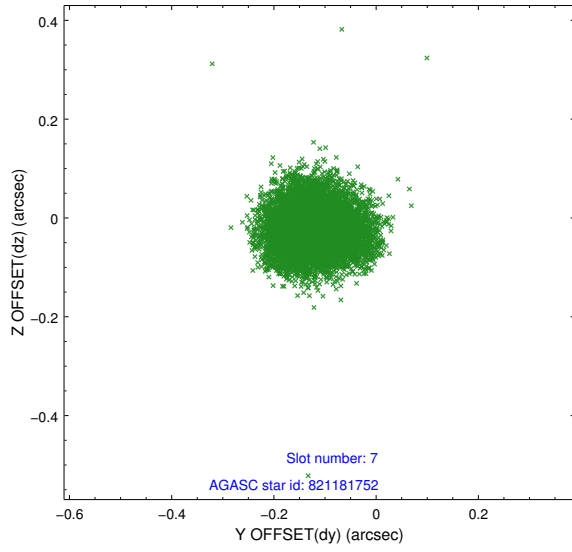
2.4.3 Slot 5



2.4.4 Slot 6

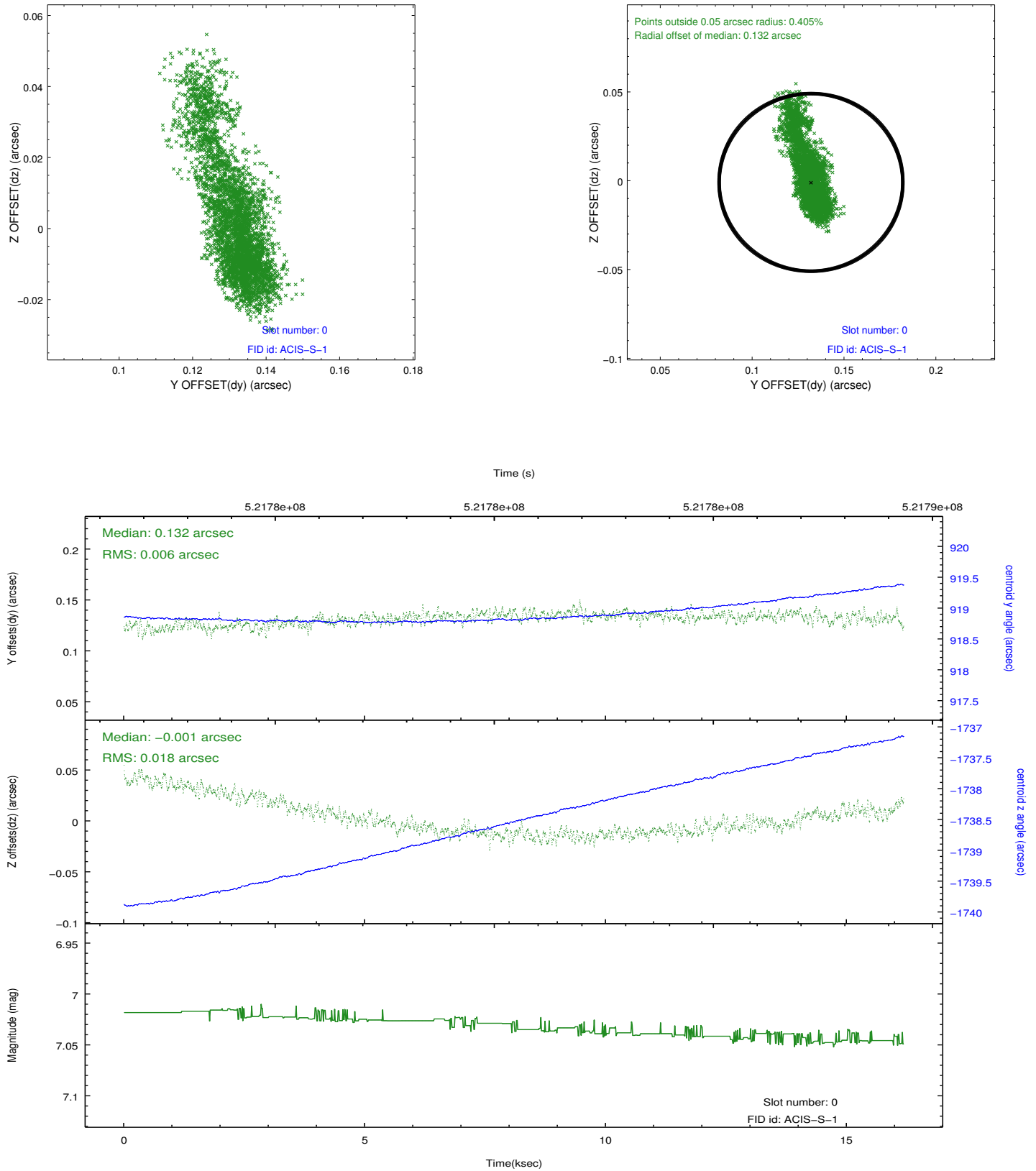


2.4.5 Slot 7

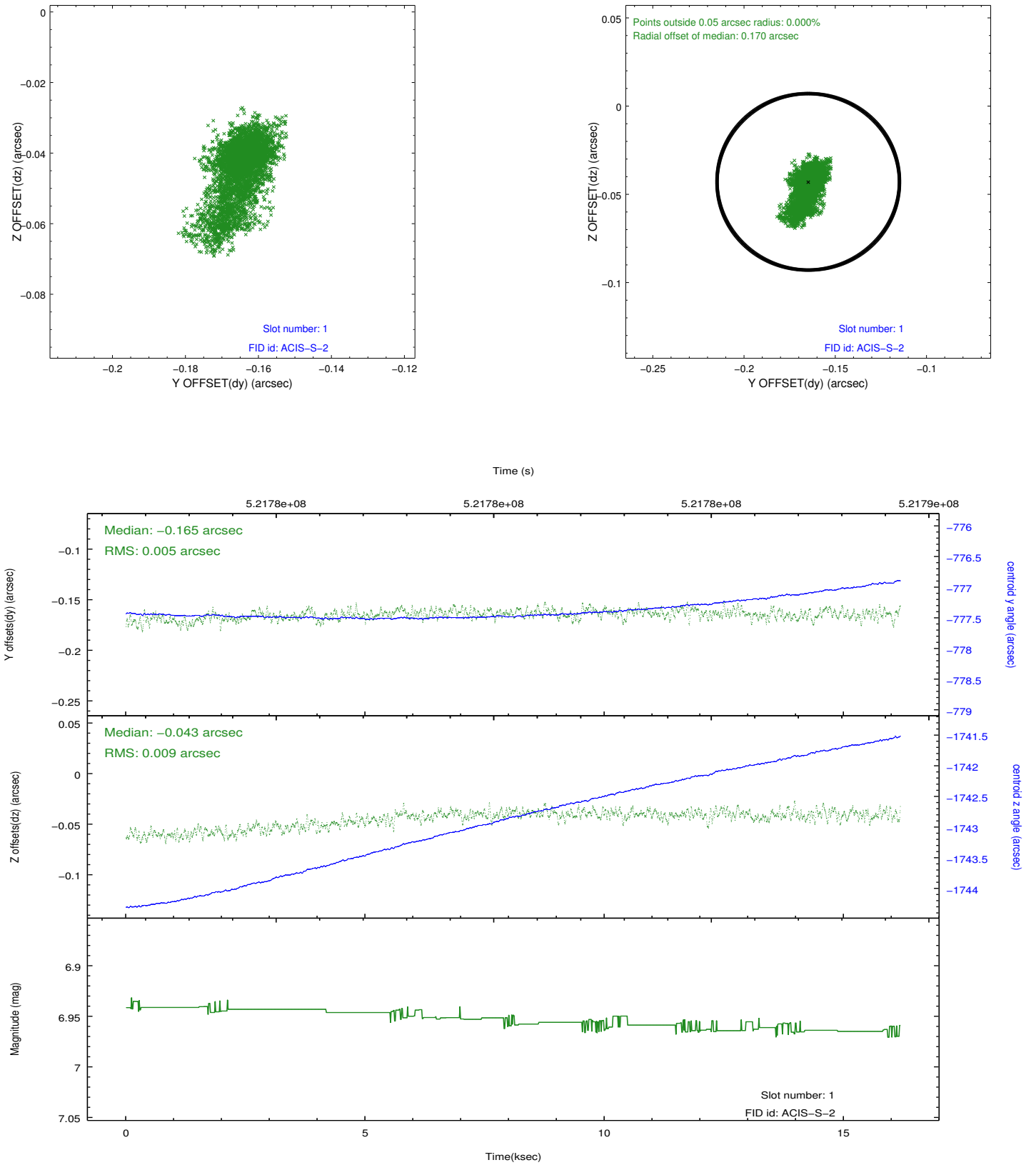


2.5 FID Slots

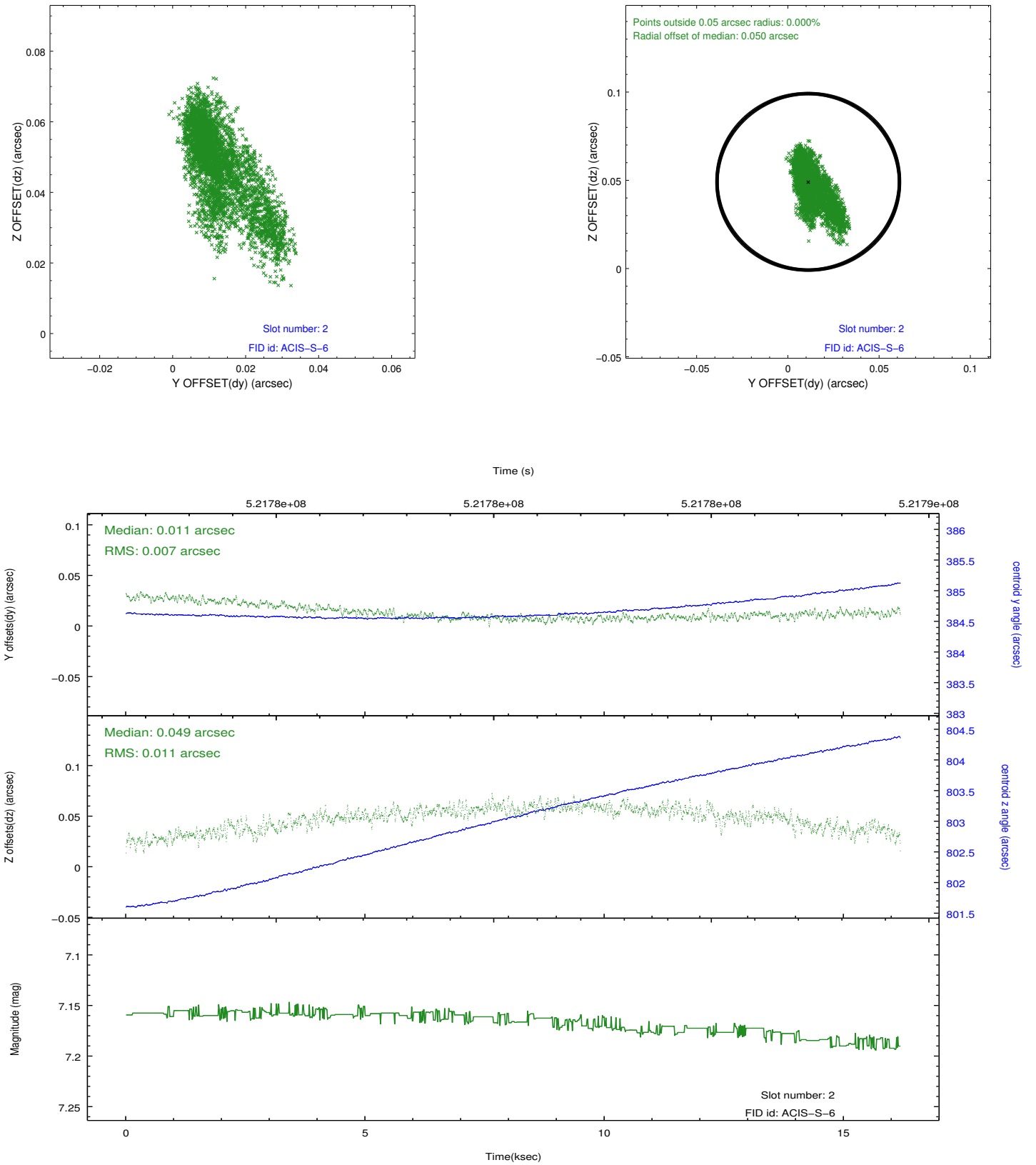
2.5.1 Slot 0



2.5.2 Slot 1



2.5.3 Slot 2



A Summary

A.1 Status

V&V Scientist	Beth Sundheim
V&V Date (YYYY-MM-DD)	2014.07.15
V&V Edition	1
V&V Disposition and Status	OK
V&V Charge Time	16.069199042201

A.2 Comments