

V&V Reference Report

L2 ASCDS Version : 10.3.3

Observation 15796 - L2 Version 1
Chandra X-Ray Center

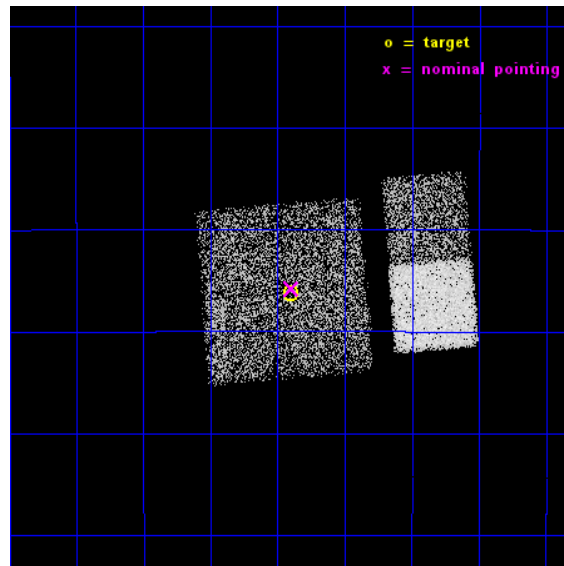
L2 Processing Date : Feb 8 2015

Contents

1	Front	2
2	OBI	3
2.1	OBI	3
2.1.1	Images	3
2.1.2	Bias	3
2.1.3	Parameters	4
2.1.4	Events	4
2.2	Compared Parameters	5
2.3	Aspect	6
2.4	Star Slots	9
2.4.1	Slot 3	9
2.4.2	Slot 4	10
2.4.3	Slot 5	11
2.4.4	Slot 6	12
2.4.5	Slot 7	13
2.5	FID Slots	14
2.5.1	Slot 0	14
2.5.2	Slot 1	15
2.5.3	Slot 2	16
A	Summary	17
A.1	Status	17
A.2	Comments	17

1 Front

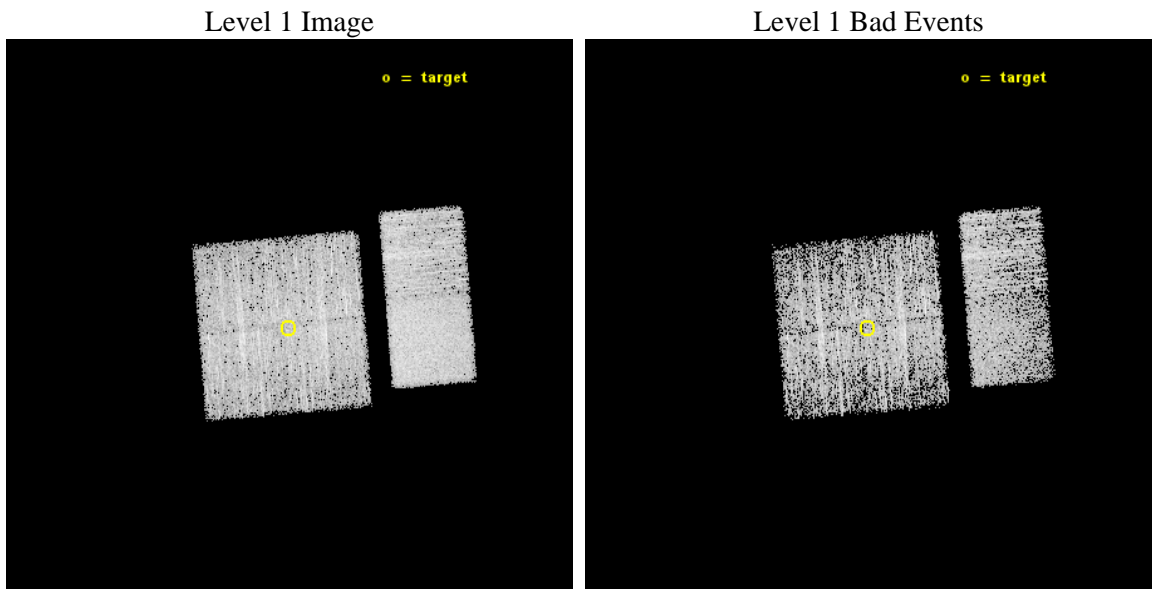
seq_num	401593	Sequence number
obs_id	15796	Observation id
title	The Nature of INTEGRAL Sources in the Galactic Plane	Proposal titl
observer	Dr. John Tomsick	Principal investigator
object	IGR J17306-2015	Source name
dtcycle	0	
cycle	P	events from which exps? Prim/Second/Both
ra_targ	262.600833	Observer's specified target RA [deg]
dec_targ	-20.272	Observer's specified target Dec [deg]
ra_nom	262.59921585745	Nominal RA [deg]
dec_nom	-20.263540333178	Nominal Dec [deg]
roll_nom	85.213184614217	Nominal Roll [deg]
revision	1	Processing version of data
ontime	4968.2570786476	Sum of GTIs [s]
livetime	4905.3460159925	Livetime [s]
ontime0	4968.1339586973	Sum of GTIs [s]
ontime1	4968.174998641	Sum of GTIs [s]
ontime2	4968.2160387039	Sum of GTIs [s]
ontime3	4968.2570786476	Sum of GTIs [s]
ontime6	4968.3391586542	Sum of GTIs [s]
ontime7	4968.2981187105	Sum of GTIs [s]
l2events	26691	Number of level 2 events



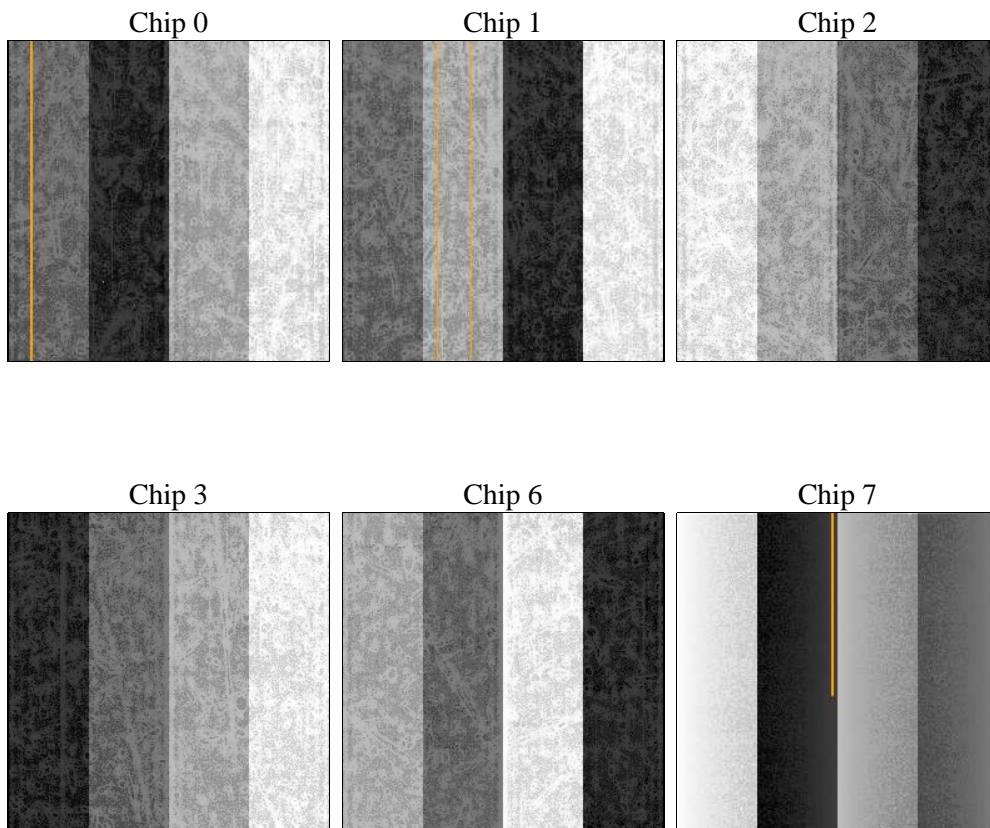
2 OBI

2.1 OBI

2.1.1 Images



2.1.2 Bias



2.1.3 Parameters

obi_num	0	Obi number	sched_exp_time	5000.000000	[s] Scheduled observation exposure time
ascdsver	10.3.3	Processing system revision	ontime	4968.2570786476	Sum of GTIs [s]
caldbver	4.6.6	 	ontime0	4968.1339586973	Sum of GTIs [s]
date	2015-02-09T02:47:10	Date and time of file creation	ontime1	4968.174998641	Sum of GTIs [s]
revision	1	Processing version of data	ontime2	4968.2160387039	Sum of GTIs [s]
			ontime3	4968.2570786476	Sum of GTIs [s]
			ontime6	4968.3391586542	Sum of GTIs [s]
			ontime7	4968.2981187105	Sum of GTIs [s]
			l1events	150762	Number of level 1 events

2.1.4 Events

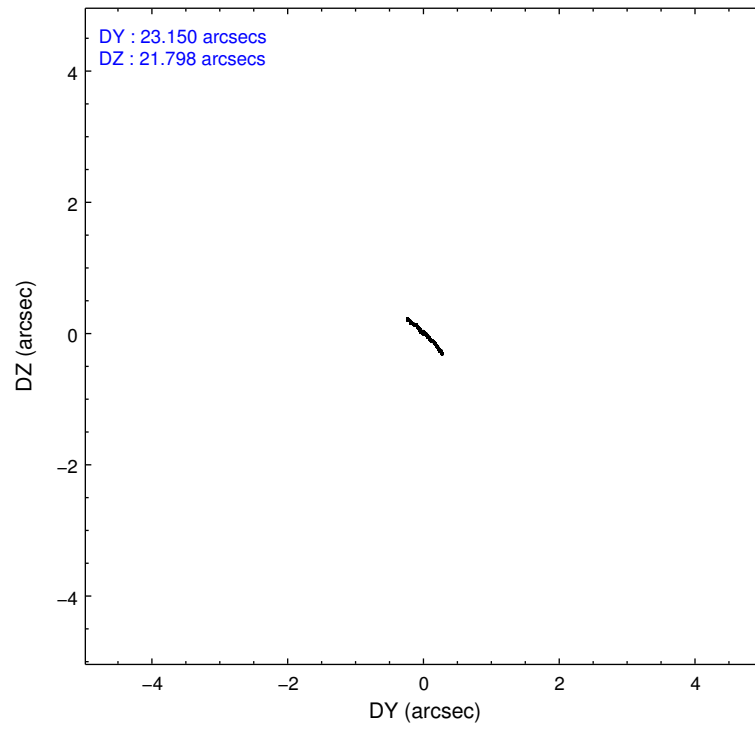
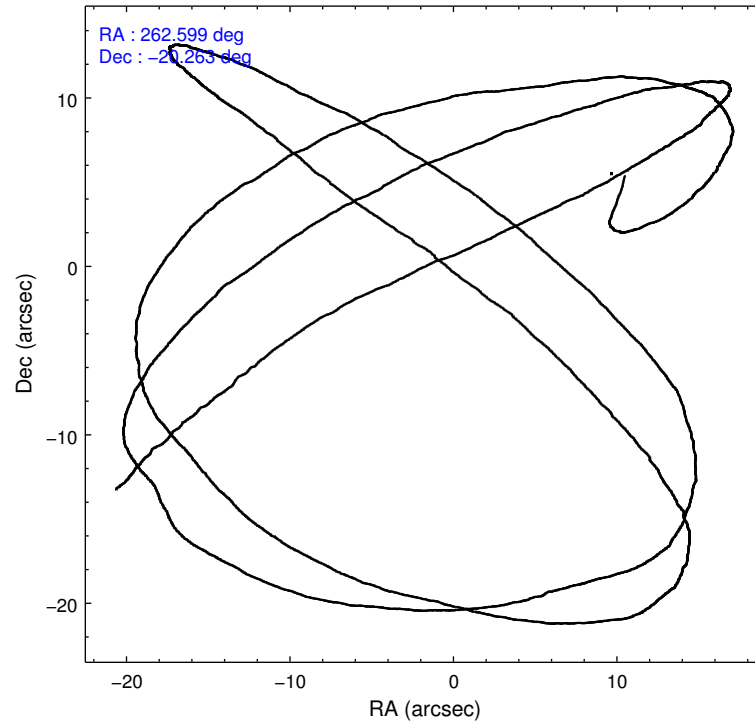
	ccd 0	ccd 1	ccd 2	ccd 3	ccd 6	ccd 7		ccd 0	ccd 1	ccd 2	ccd 3	ccd 6	ccd 7
level 1 events	21244	22938	24120	22970	26170	33320	grade 0 events	1011	1125	1021	965	1041	1295
rejected events	18375	19807	21240	20240	23104	18714		4%	4%	4%	4%	3%	3%
rejected %	86%	86%	88%	88%	88%	56%	grade 1 events	12	11	12	15	8	29
								0%	0%	0%	0%	0%	0%
							grade 2 events	732	786	717	605	685	3081
								3%	3%	2%	2%	2%	9%
							grade 3 events	290	257	274	290	304	1245
								1%	1%	1%	1%	1%	3%
							grade 4 events	256	288	297	305	308	1219
								1%	1%	1%	1%	1%	3%
							grade 5 events	1134	1177	1104	1324	1323	3462
								5%	5%	4%	5%	5%	10%
							grade 6 events	580	677	574	566	731	7777
								2%	2%	2%	2%	2%	23%
							grade 7 events	17229	18617	20121	18900	21770	15212
								81%	81%	83%	82%	83%	45%

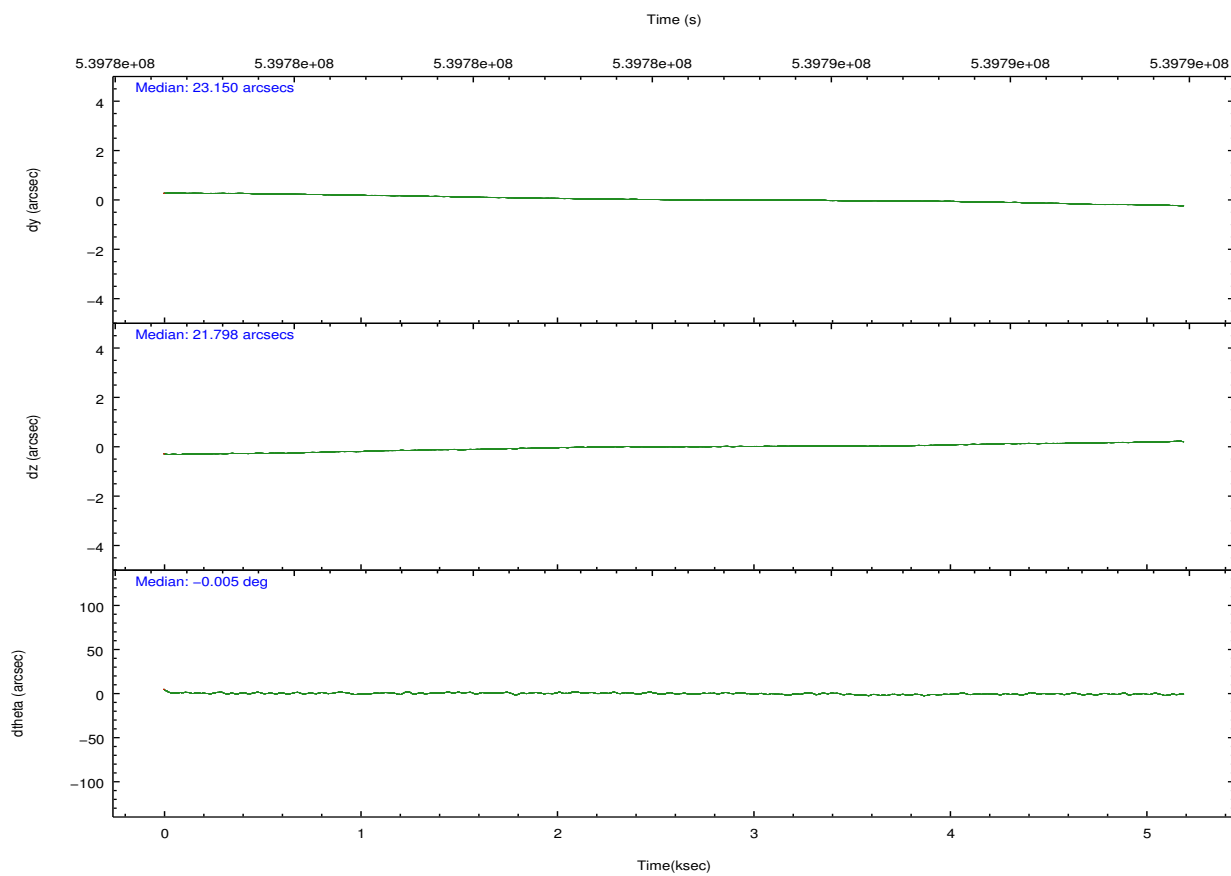
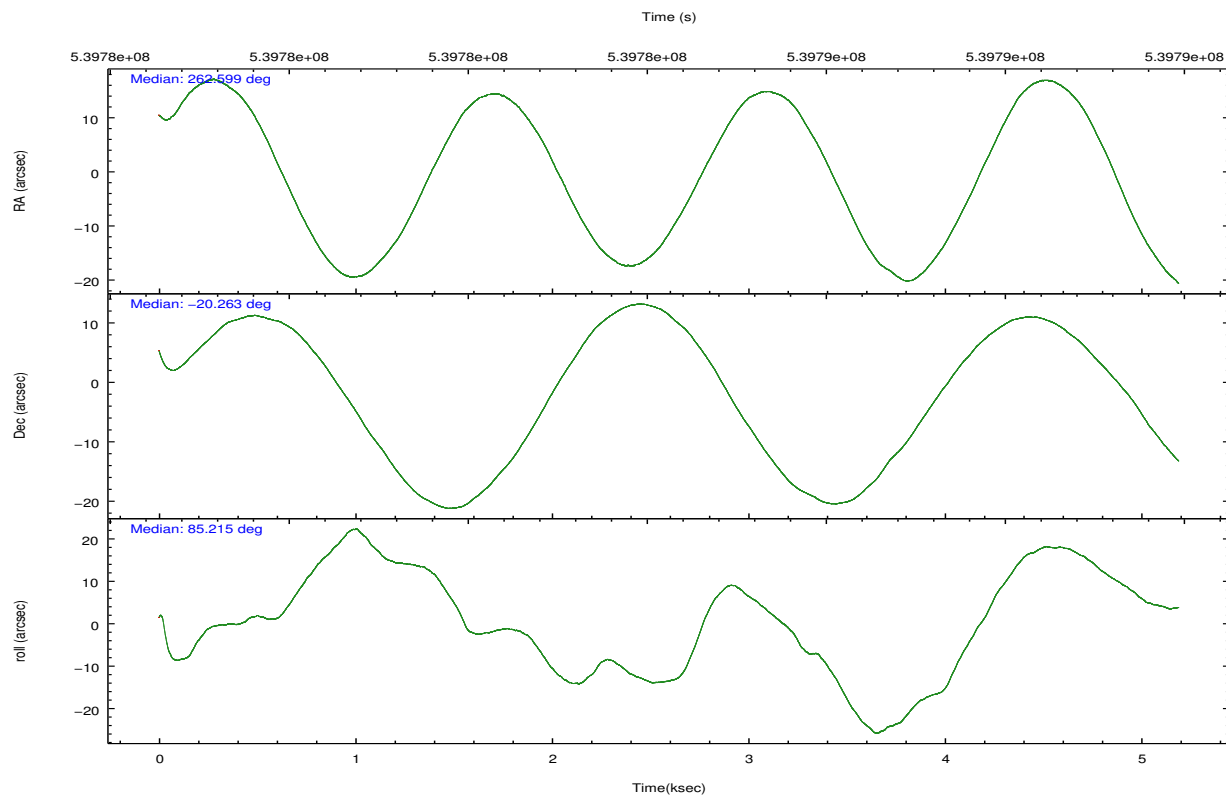
2.2 Compared Parameters

Parameter	Planned	Actual
Instrument	ACIS	ACIS
Detector	ACIS-012367	ACIS-012367
Grating	NONE	NONE
Data mode	VFAINT	VFAINT
Observation mode	POINTING	POINTING
[deg] Pointing RA	262.611565	262.59921585745
[deg] Pointing Dec	-20.288935	-20.26354033317813
[deg] Pointing Roll	85.008767	85.21318461421674
[mm] SIM focus pos	-0.782348	-0.7809083437167272
[mm] SIM defocus	0	0.001439871863259334
[mm] SIM translation stage pos	-233.592463	-233.5874344608287
[mm] SIM translation stage offset	0	-0.005018542100998502
[s] Observation start time (MET)	539782716.184000	539781034.3750401
Observation start date	2015-02-08T11:37:29	2015-02-08T11:10:34
[s] Observation end time (MET)	539787716.184000	539788683.95046
Observation end date	2015-02-08T13:00:49	2015-02-08T13:18:03
Read mode	TIMED	TIMED

Parameter	Planned	Actual
Obspar format version number	7	7
Obspar file type	PREDICTED	ACTUAL
Obspar update status	NONE	UPDATED
CCD I0 on	Y	Y
CCD I1 on	Y	Y
CCD I2 on	Y	Y
CCD I3 on	Y	Y
CCD S0 on	N	N
CCD S1 on	N	N
CCD S2 on	O1	Y
CCD S3 on	O2	Y
CCD S4 on	N	N
CCD S5 on	N	N
Number of optional ACIS chips dropped	0	0
On-chip summing requested	N	N
Subarray requested	NONE	NONE
Alternating exposures requested	N	N
[s] Primary exposure time	0.000000	3.2

2.3 Aspect



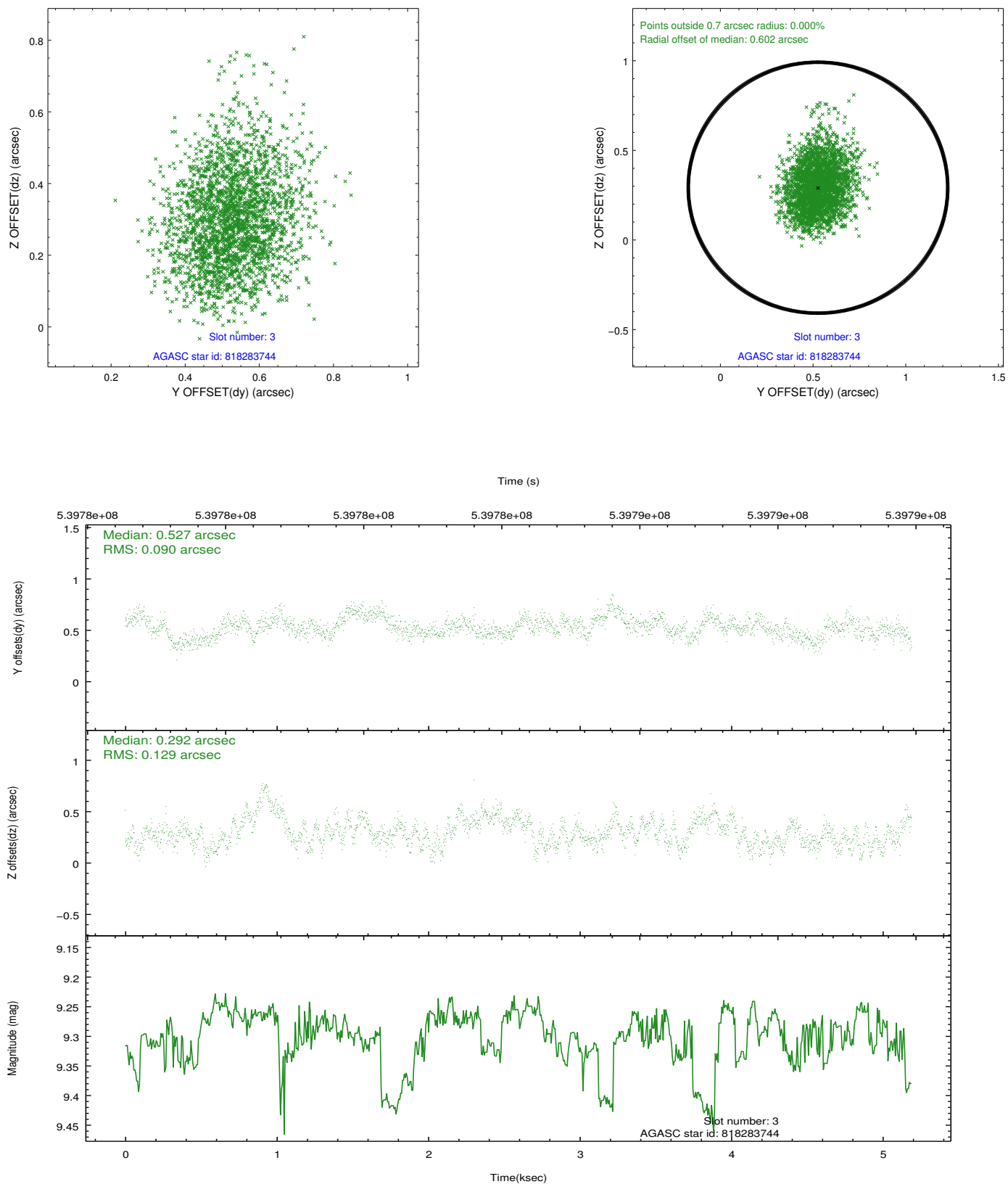


Slot Statistics

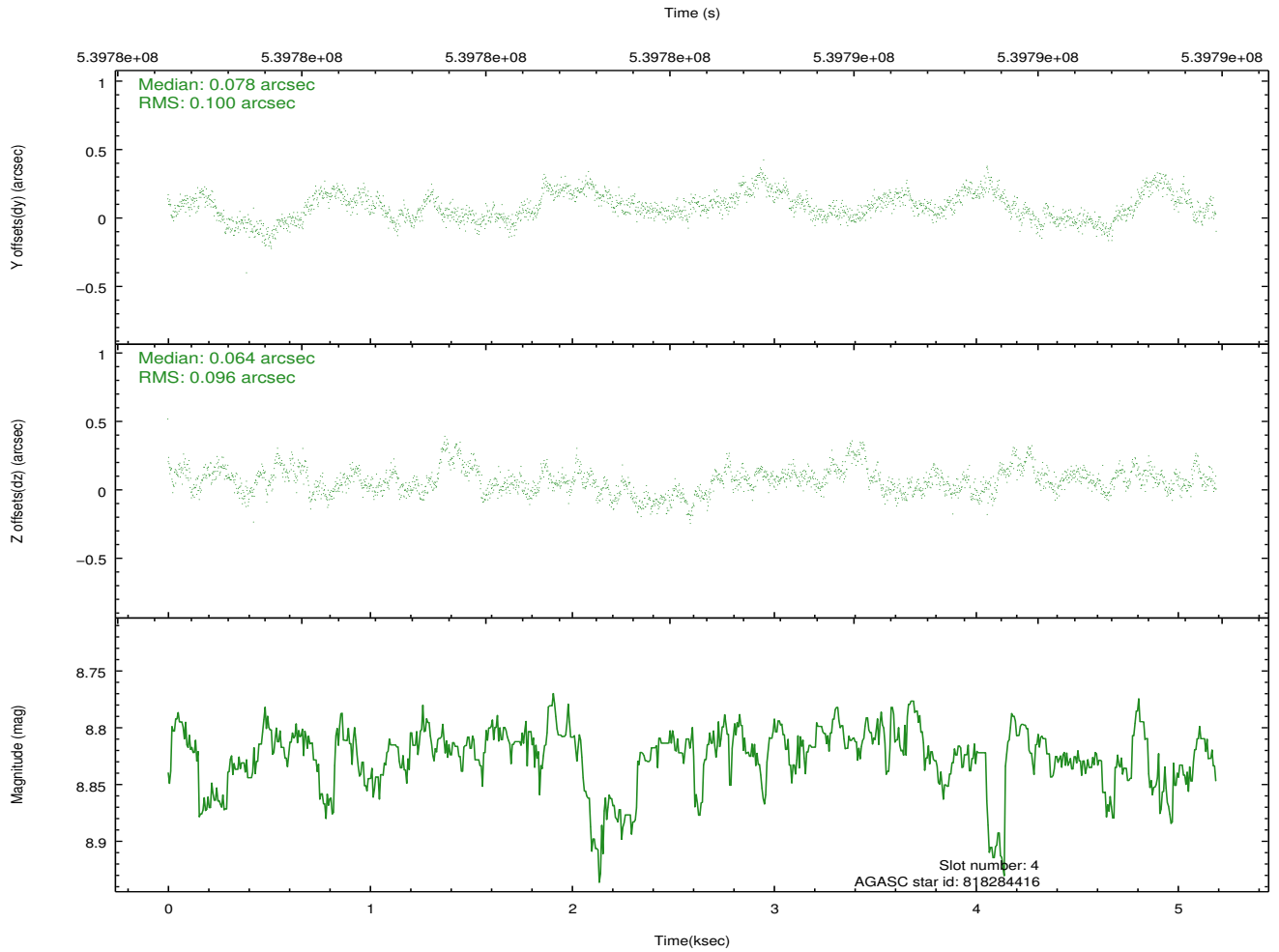
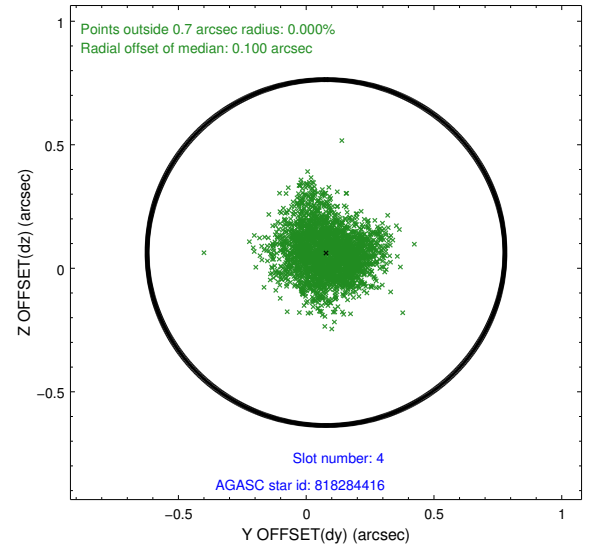
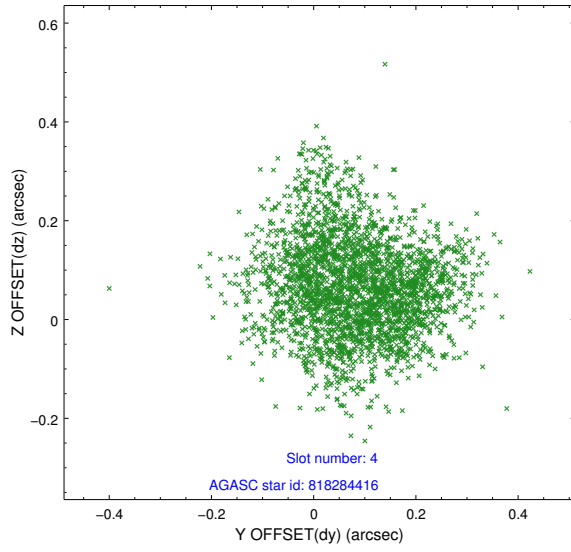
lot	status	used	id	mag	n_pts	med_dy	med_dz	drl	dr2	ra	dec	mean_y	mean_x
0	FID		ACIS-I-2	7.07	1266	-0.193	-0.141	0.009	0.017	0.000000	0.000000	-778.28	-852.08
1	FID		ACIS-I-4	7.10	1265	0.441	0.142	0.006	0.011	0.000000	0.000000	2135.79	1053.97
2	FID		ACIS-I-5	7.15	1267	-0.349	0.068	0.009	0.015	0.000000	0.000000	-1830.86	1052.84
3	GUIDE	used	818283744	9.30	2526	0.527	0.292	0.167	0.268	263.020646	-20.583241	-939.28	-1462.70
4	GUIDE	used	818284416	8.82	2532	0.078	0.064	0.147	0.234	262.995555	-20.203229	417.01	-1265.38
5	GUIDE	used	818286152	8.56	2527	-0.557	-0.366	0.136	0.203	262.099180	-20.363867	-423.61	1699.02
6	GUIDE	used	818808880	9.52	2529	0.476	0.275	0.165	0.262	262.860845	-20.882902	-2059.62	-1018.97
7	BAD	used	818285680	9.77	2307	-0.589	-0.292	0.244	0.435	263.359332	-19.994501	1269.07	-2428.13

2.4 Star Slots

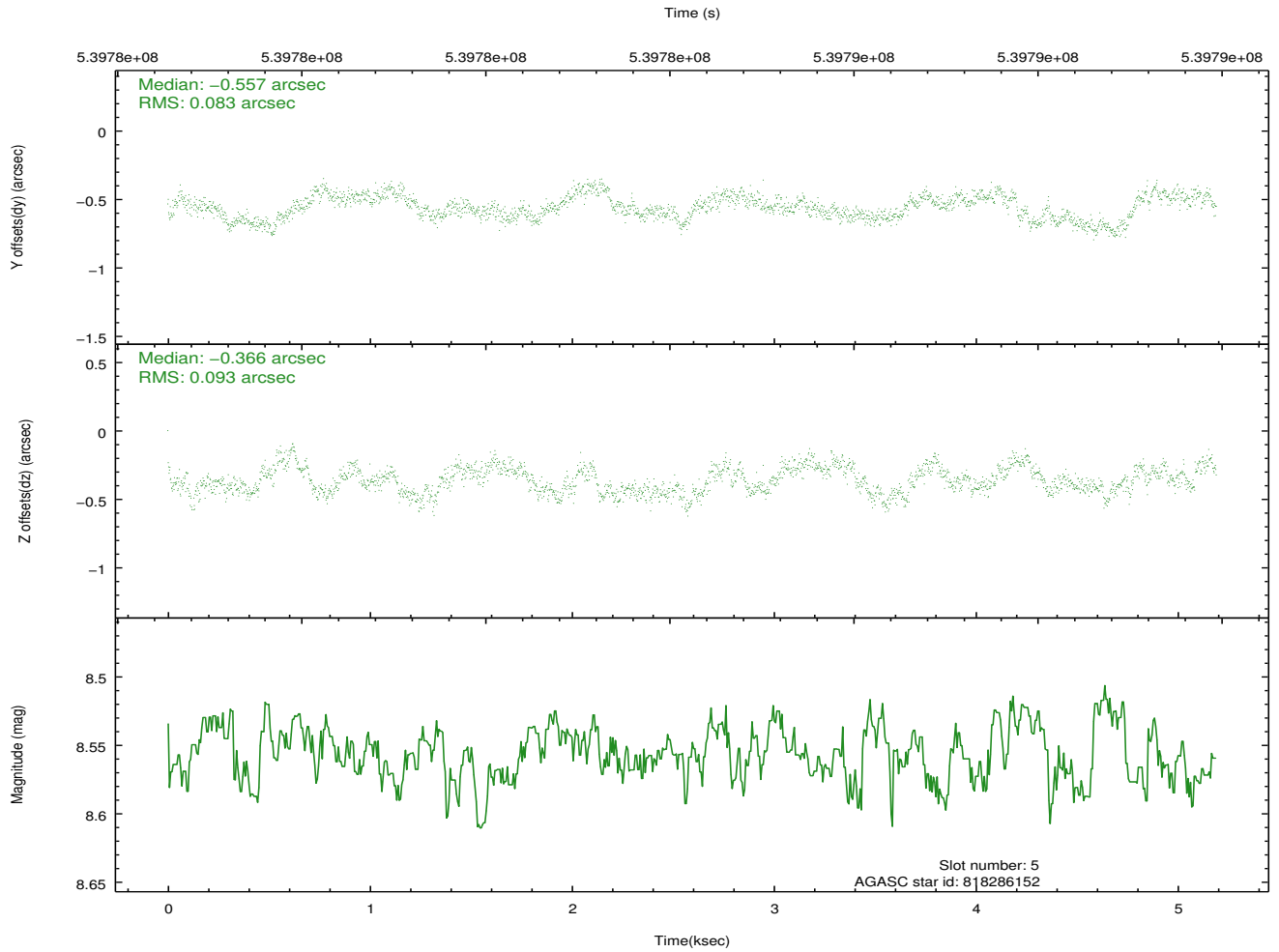
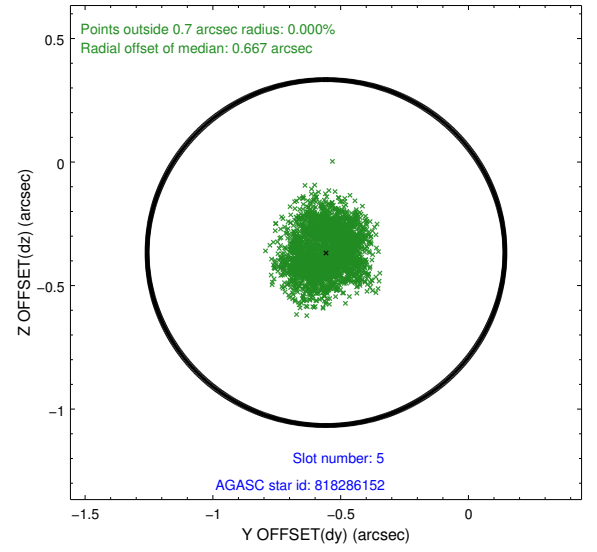
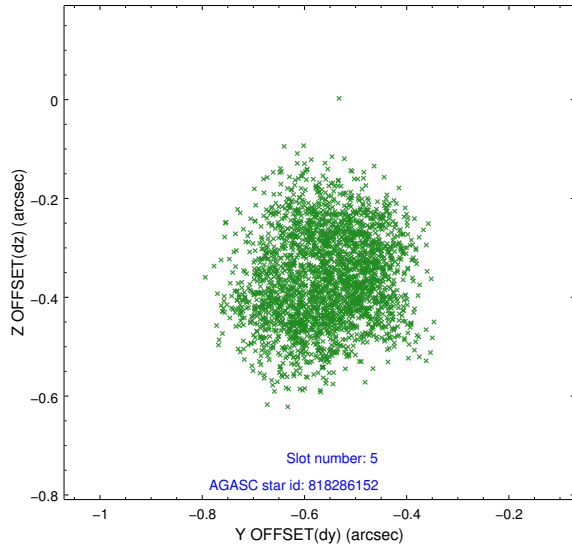
2.4.1 Slot 3



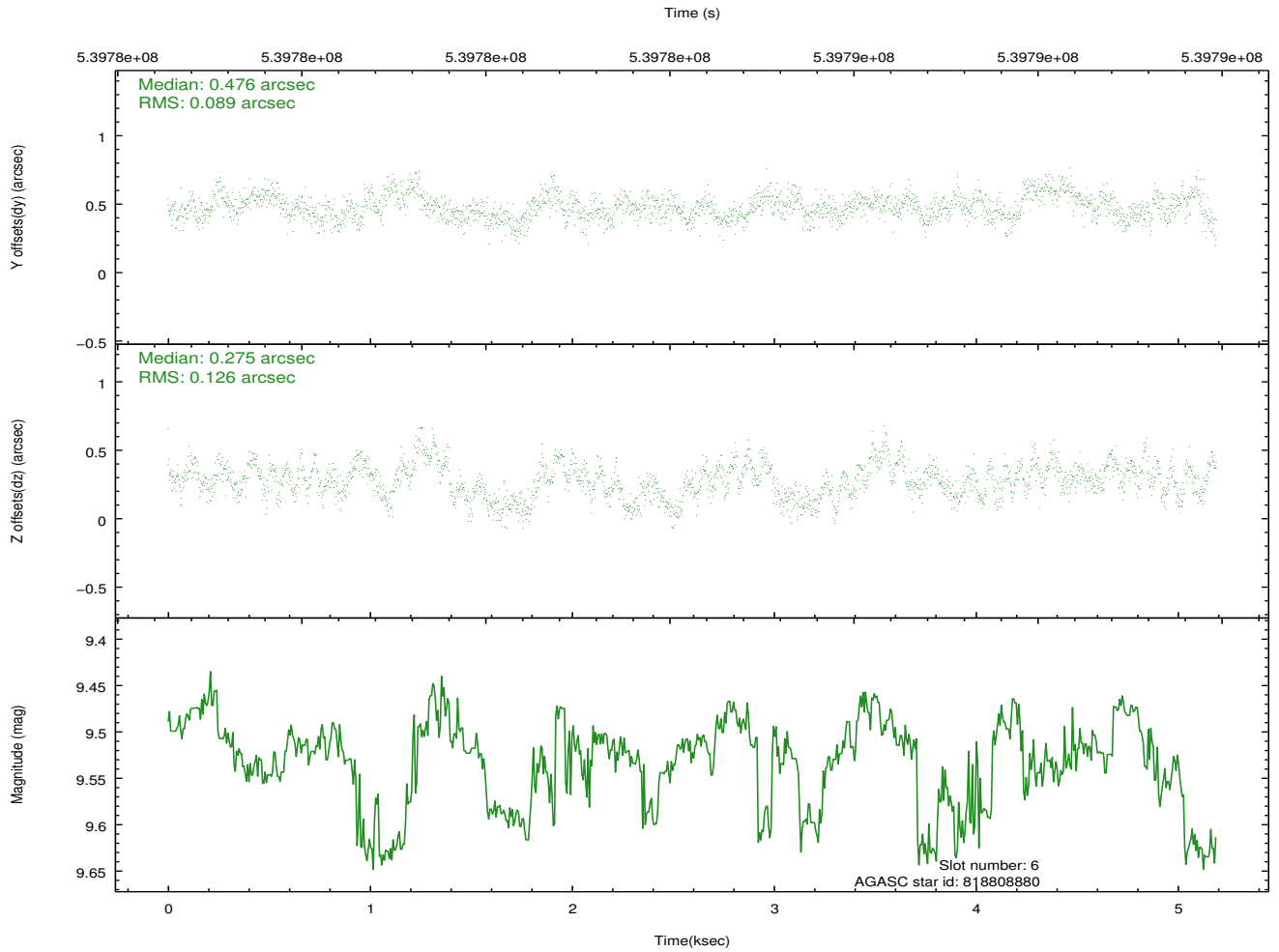
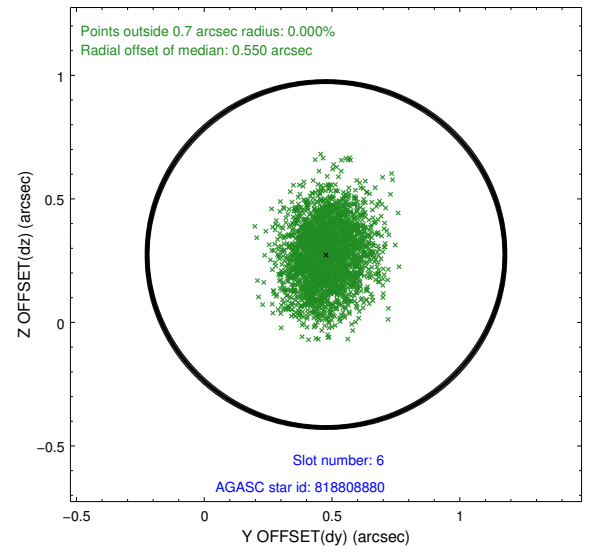
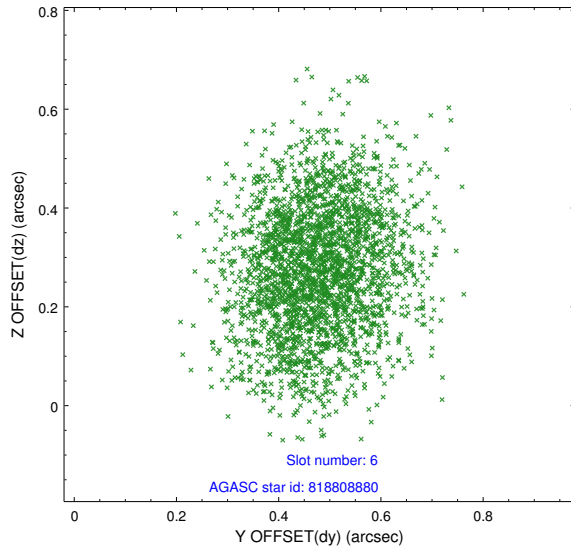
2.4.2 Slot 4



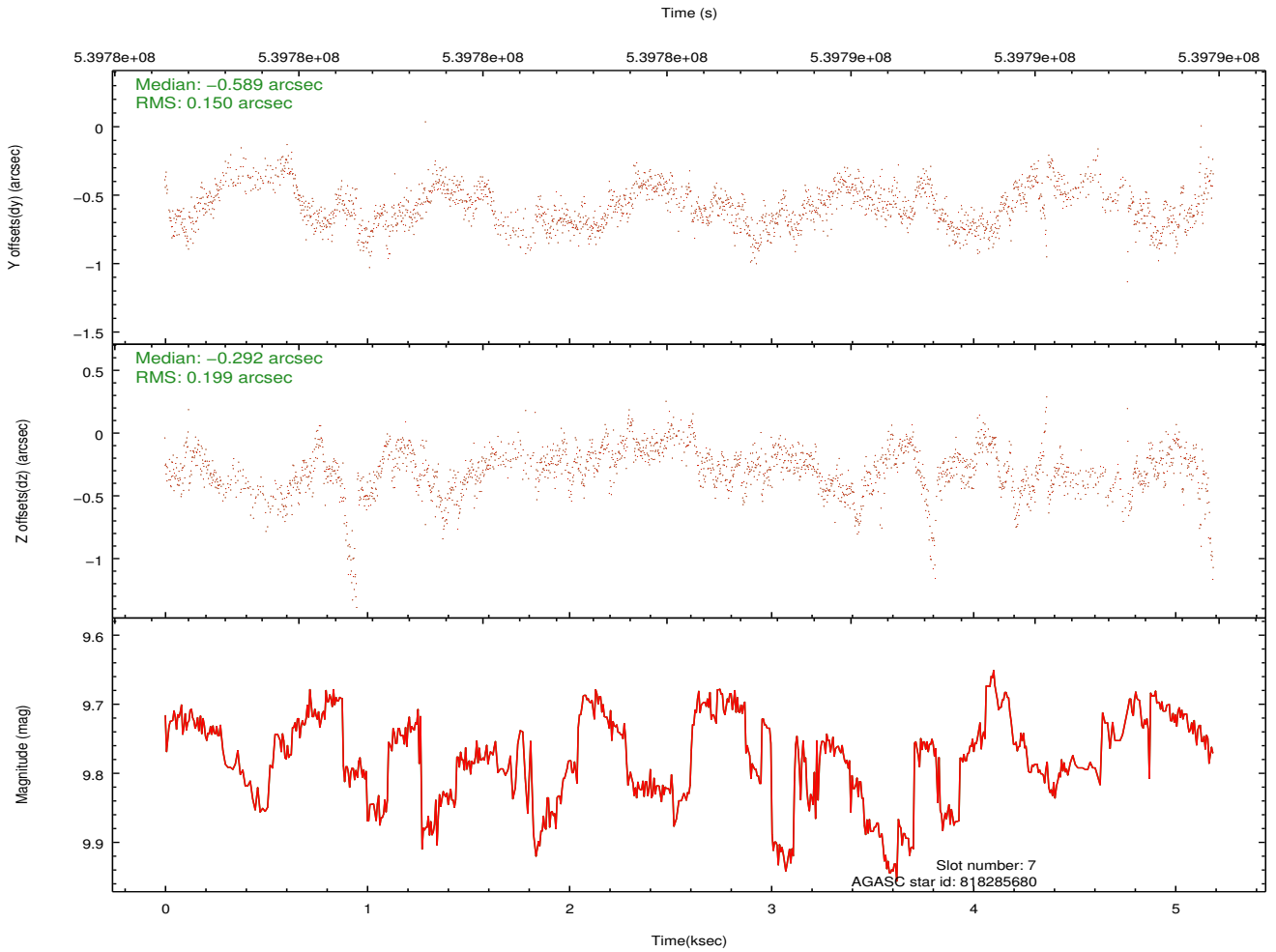
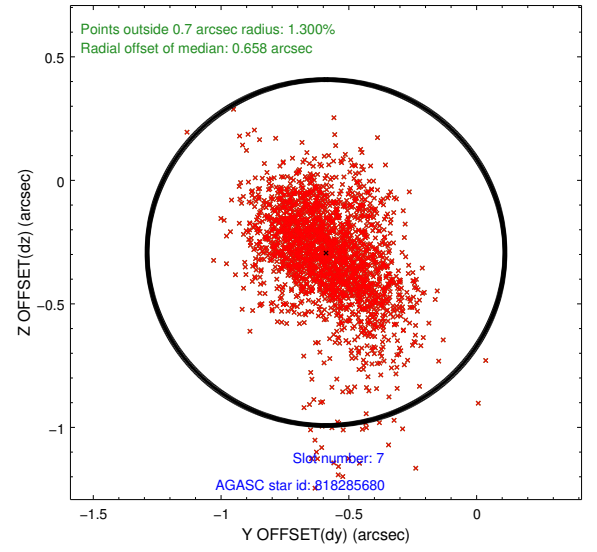
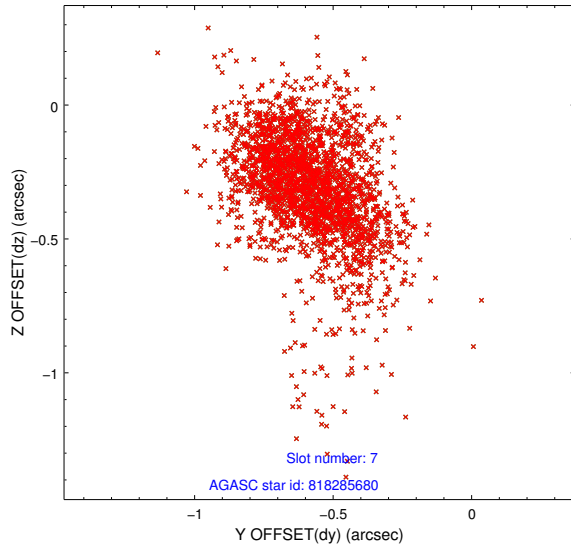
2.4.3 Slot 5



2.4.4 Slot 6

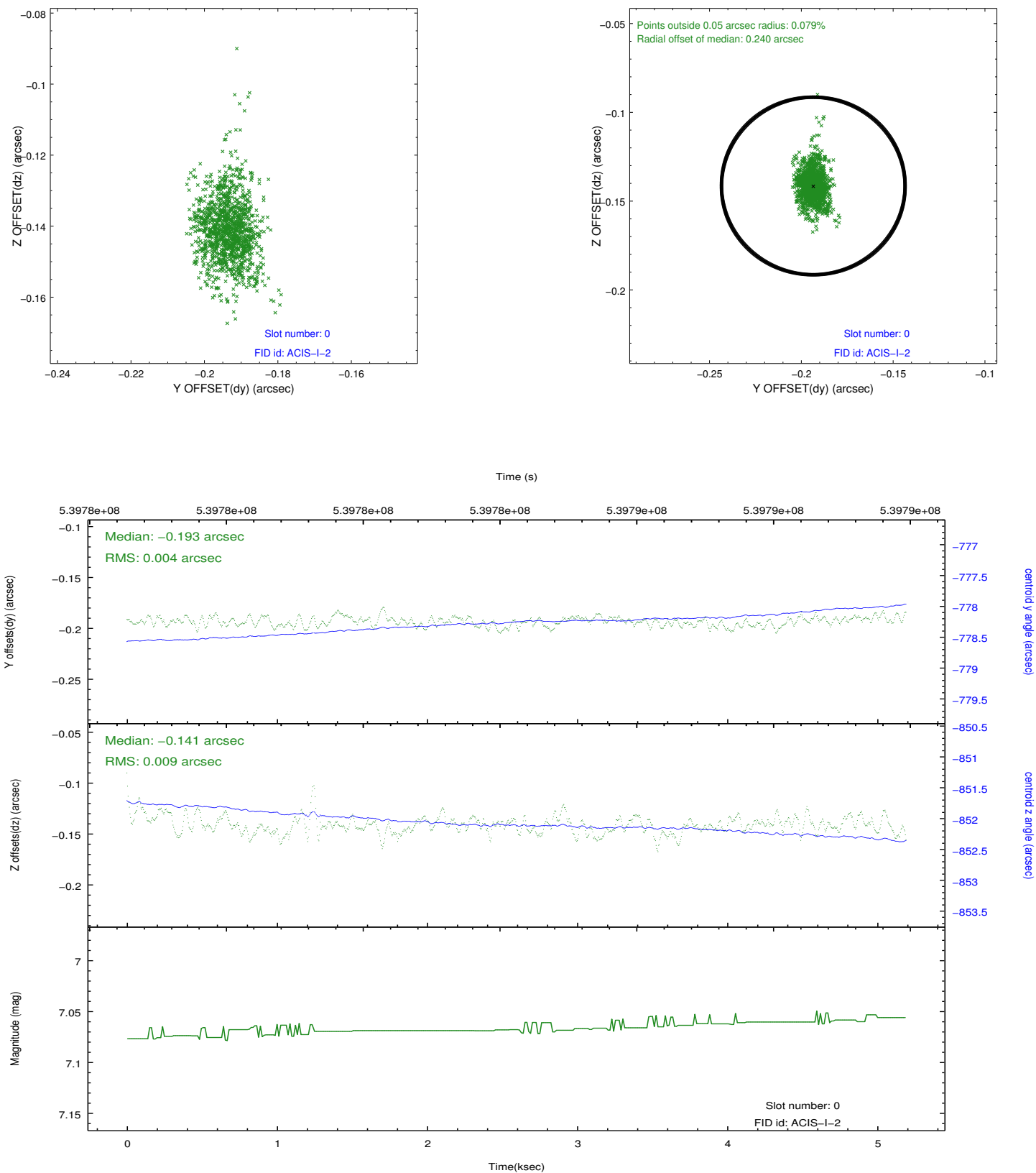


2.4.5 Slot 7

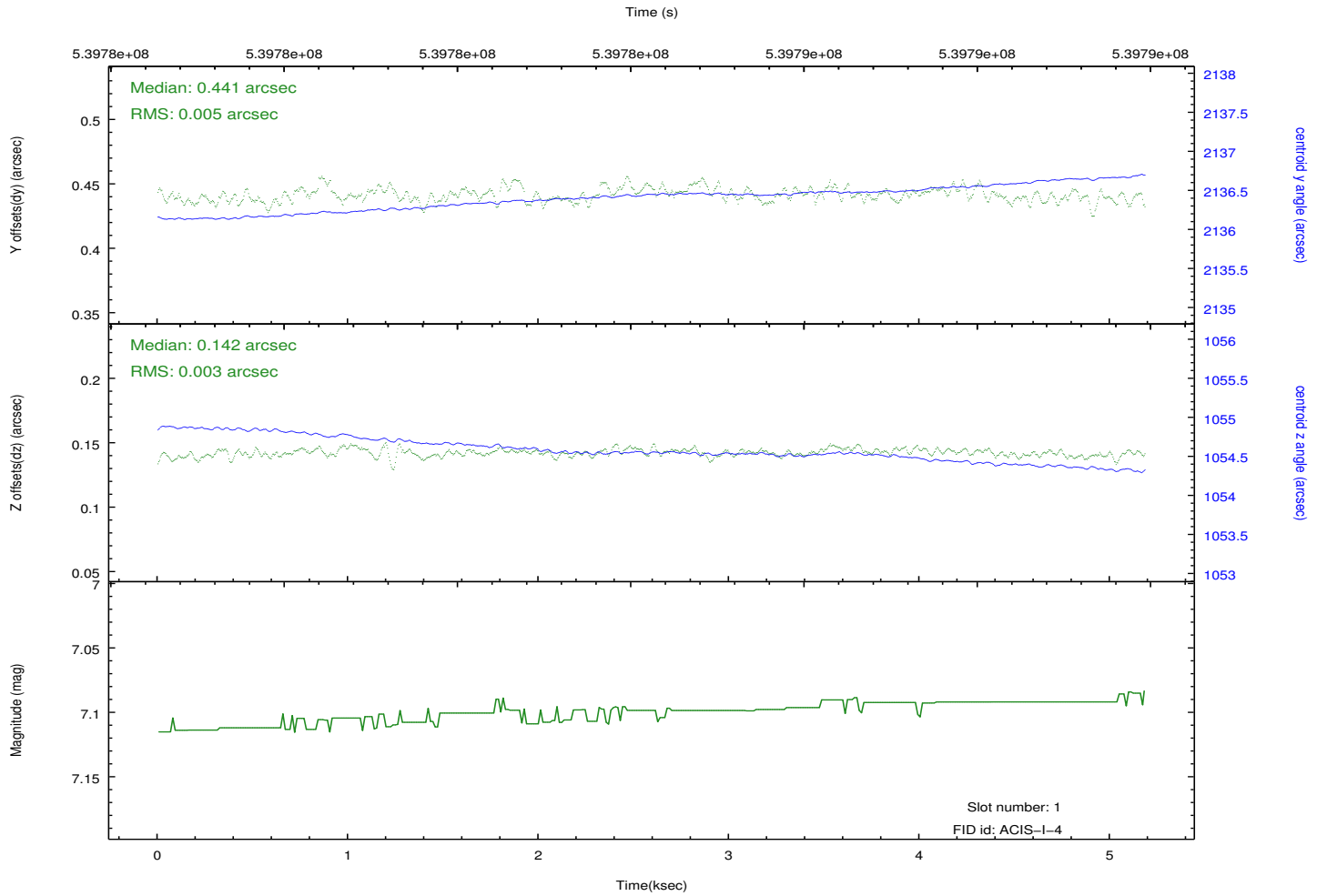
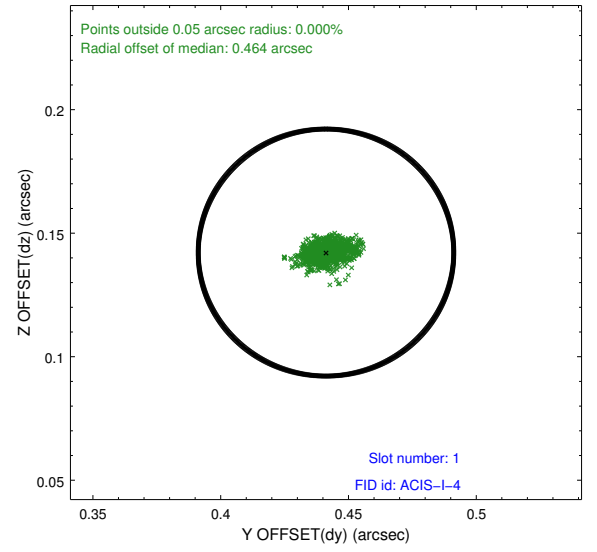
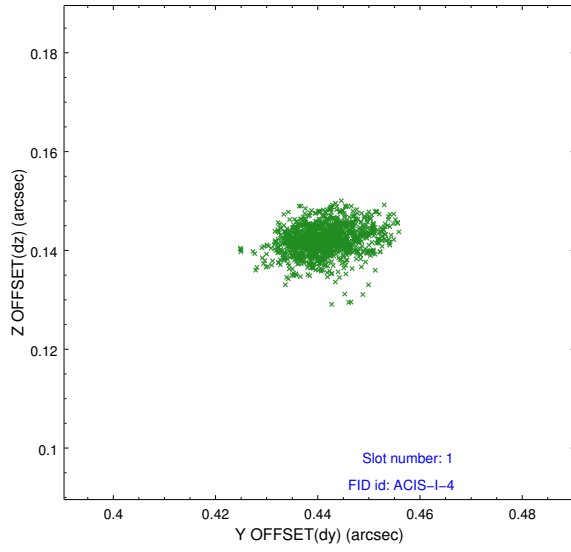


2.5 FID Slots

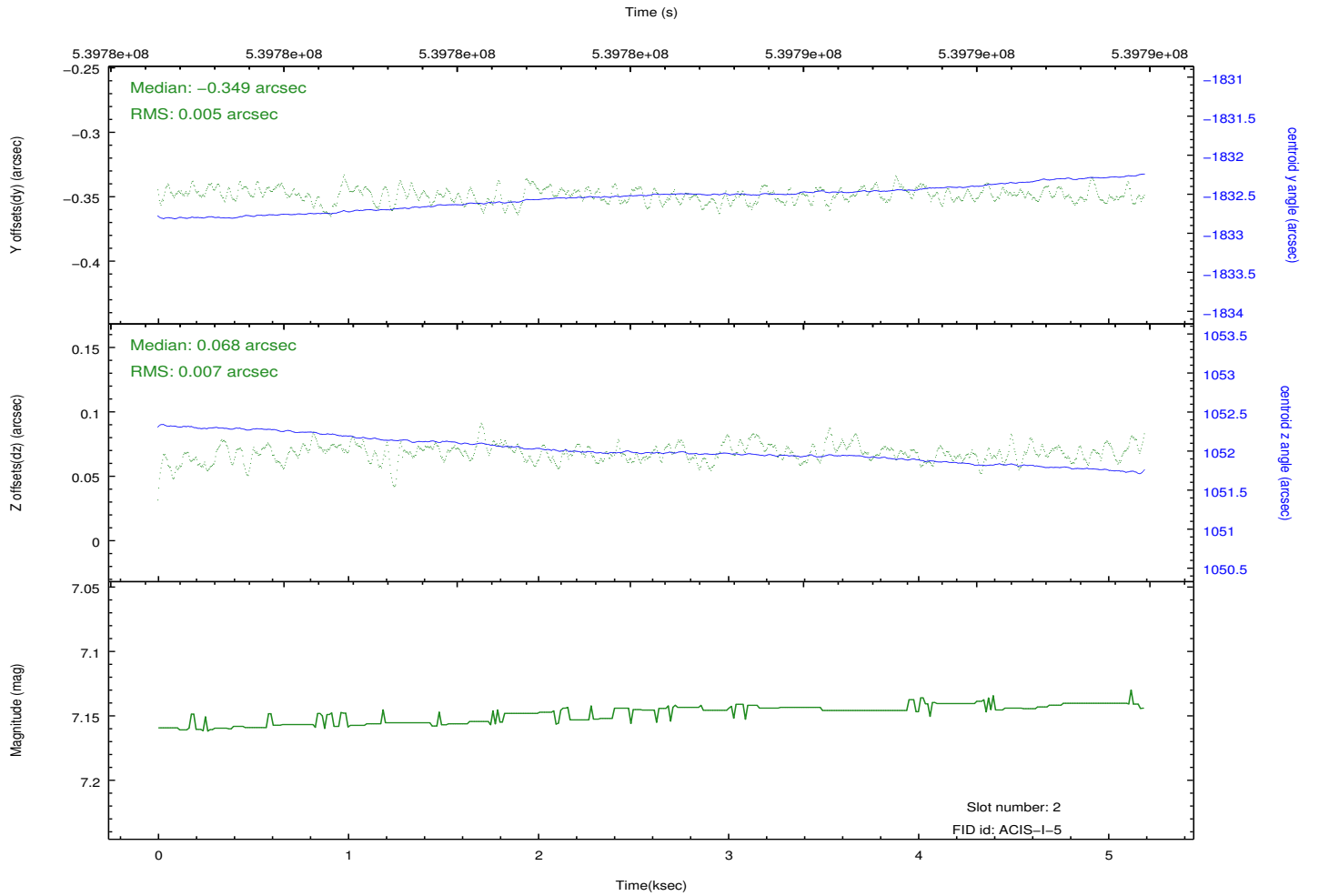
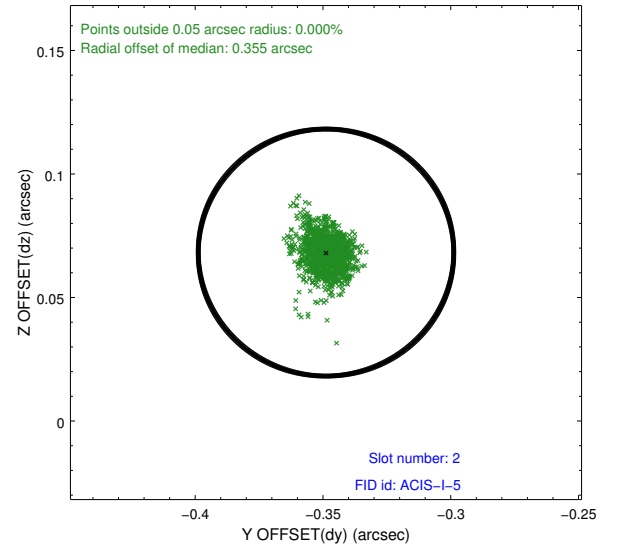
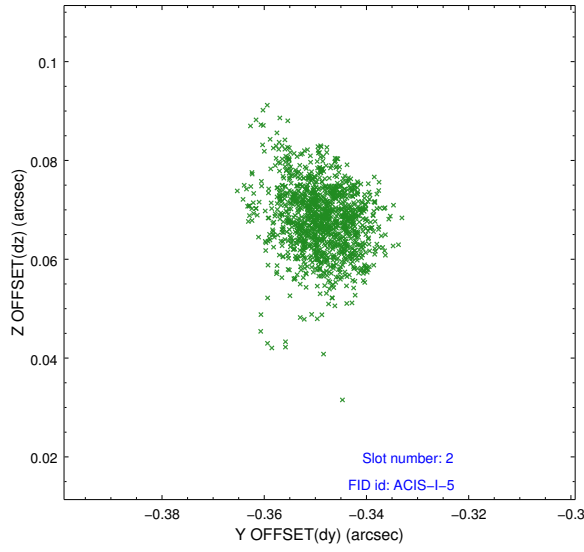
2.5.1 Slot 0



2.5.2 Slot 1



2.5.3 Slot 2



A Summary

A.1 Status

V&V Scientist	Joy Nichols
V&V Date (YYYY-MM-DD)	2015.02.09
V&V Edition	1
V&V Disposition and Status	OK
V&V Charge Time	4.9682570786476

A.2 Comments