

V&V Reference Report

L2 ASCDS Version : 10.2.4

Observation 15765 - L2 Version 1
Chandra X-Ray Center

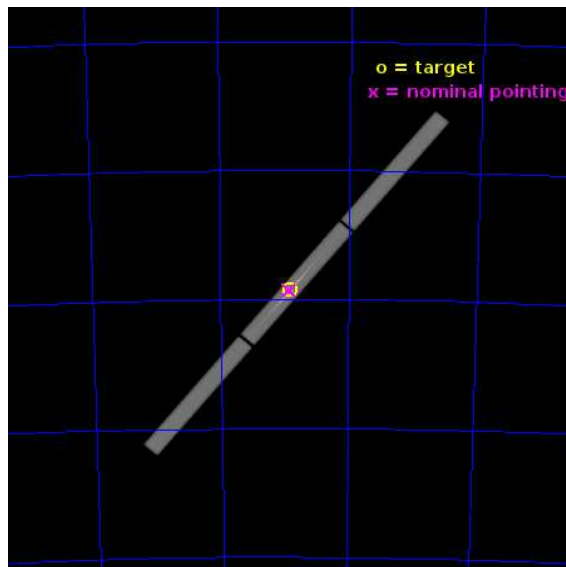
L2 Processing Date : Jul 12 2014

Contents

1	Front	2
2	OBI	3
2.1	OBI	3
2.1.1	Images	3
2.1.2	Parameters	4
2.1.3	Events	4
2.2	Compared Parameters	5
2.3	Aspect	6
2.4	Star Slots	9
2.4.1	Slot 3	9
2.4.2	Slot 4	10
2.4.3	Slot 5	11
2.4.4	Slot 6	12
2.4.5	Slot 7	13
2.5	FID Slots	14
2.5.1	Slot 0	14
2.5.2	Slot 1	15
2.5.3	Slot 2	16
3	Gratings	17
3.1	LETG Arm	17
A	Summary	19
A.1	Status	19
A.2	Comments	19

1 Front

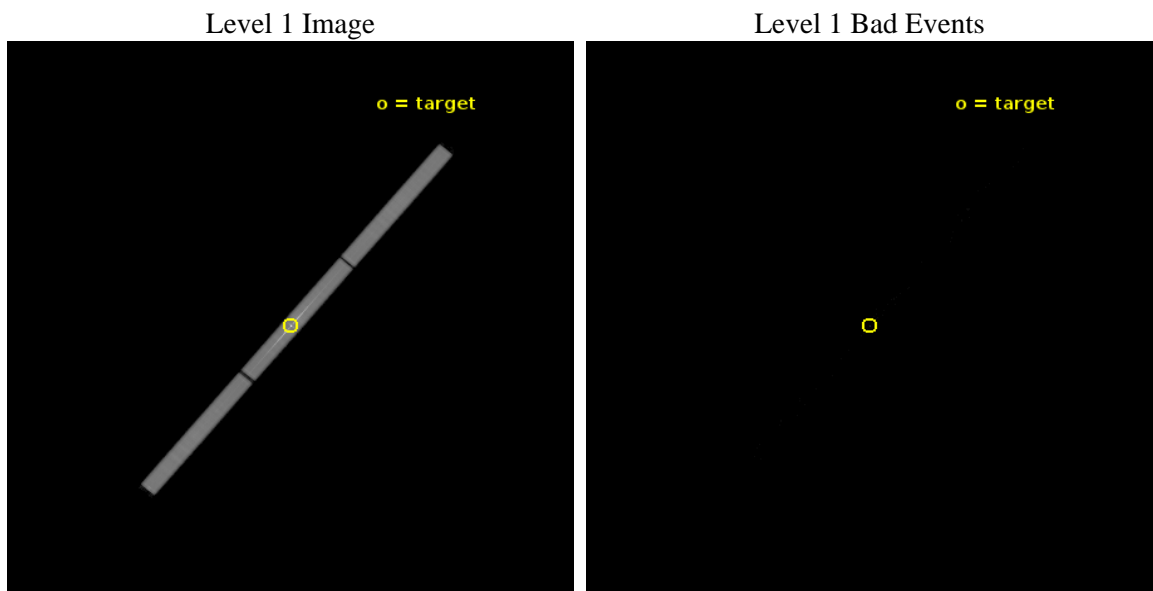
seq_num	401562	Sequence number
obs_id	15765	Observation id
title	LETGS Spectroscopy of the Ultracompact Binary 4U 1626-67	Proposal
observer	Prof. Deepto Chakrabarty	Principal investigator
object	4U 1626-67	Source name
ra_targ	248.069583	Observer's specified target RA [deg]
dec_targ	-67.461667	Observer's specified target Dec [deg]
ra_nom	248.07779955417	Nominal RA [deg]
dec_nom	-67.465443652885	Nominal Dec [deg]
roll_nom	310.07492965987	Nominal Roll [deg]
revision	1	Processing version of data
ontime	59793.634560704	[s]
livetime	59402.86524097	Ontime multiplied by DTCOR
l2events	3379201	Number of level 2 events



2 OBI

2.1 OBI

2.1.1 Images



2.1.2 Parameters

obi_num	1	Obi number	sched_exp_time	60000.000000	[s] Scheduled observation exposure time
ascdsver	10.2.4	Processing system revision	ontime	59793.634560704	[s]
caldsver	4.6.2	 	l1events	4374911	Number of level 1 events
date	2014-07-12T04:51:00	Date and time of file creation	tgmethod	TGDETECT	Method used to create src1a file
revision	1	Processing version of data	zo_pos	(32859.94, 32885.21)	src1a sky pixel position

2.1.3 Events

Level 1 Events

	segment 1	segment 2	segment 3
level 1 events	1353918	1655665	1365328
rejected events	1706	2028	1821
rejected %	0%	0%	0%

2.2 Compared Parameters

Parameter	Planned	Actual
Instrument	HRC	HRC
Detector	HRC-S	HRC-S
Grating	LETG	LETG
Data mode	OBSERVING	OBSERVING
Observation mode	POINTING	POINTING
[deg] Pointing RA	248.005864	248.0777995541661
[deg] Pointing Dec	-67.456936	-67.46544365288483
[deg] Pointing Roll	309.941150	310.0749296598666
[mm] SIM focus pos	-1.429586	-1.428180813131781
[mm] SIM defocus	0.1037507710433287	0.1051558262725154
[mm] SIM translation stage pos	250.455976	250.466033080201
[mm] SIM translation stage offset	0	-0.01005468664627074
[s] Observation start time (MET)	521429181.184000	521427979.9043
Observation start date	2014-07-11T01:25:14	2014-07-11T01:06:19
[s] Observation end time (MET)	521489181.184000	521489993.43273
Observation end date	2014-07-11T18:05:14	2014-07-11T18:19:53

Parameter	Planned	Actual
Obspar format version number	7	7
Obspar file type	PREDICTED	ACTUAL
Obspar update status	NONE	UPDATED

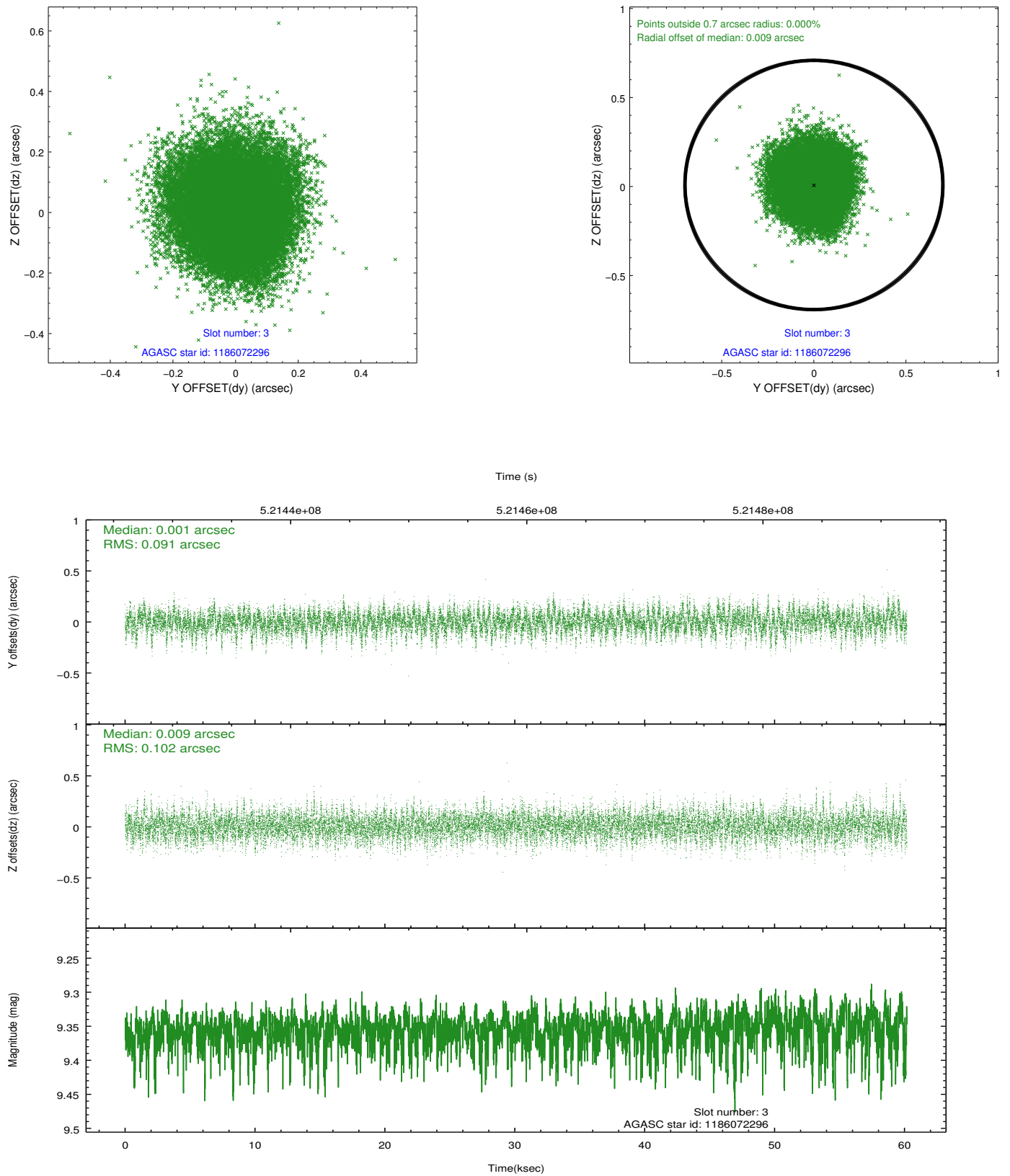
2.3 Aspect

Slot Statistics

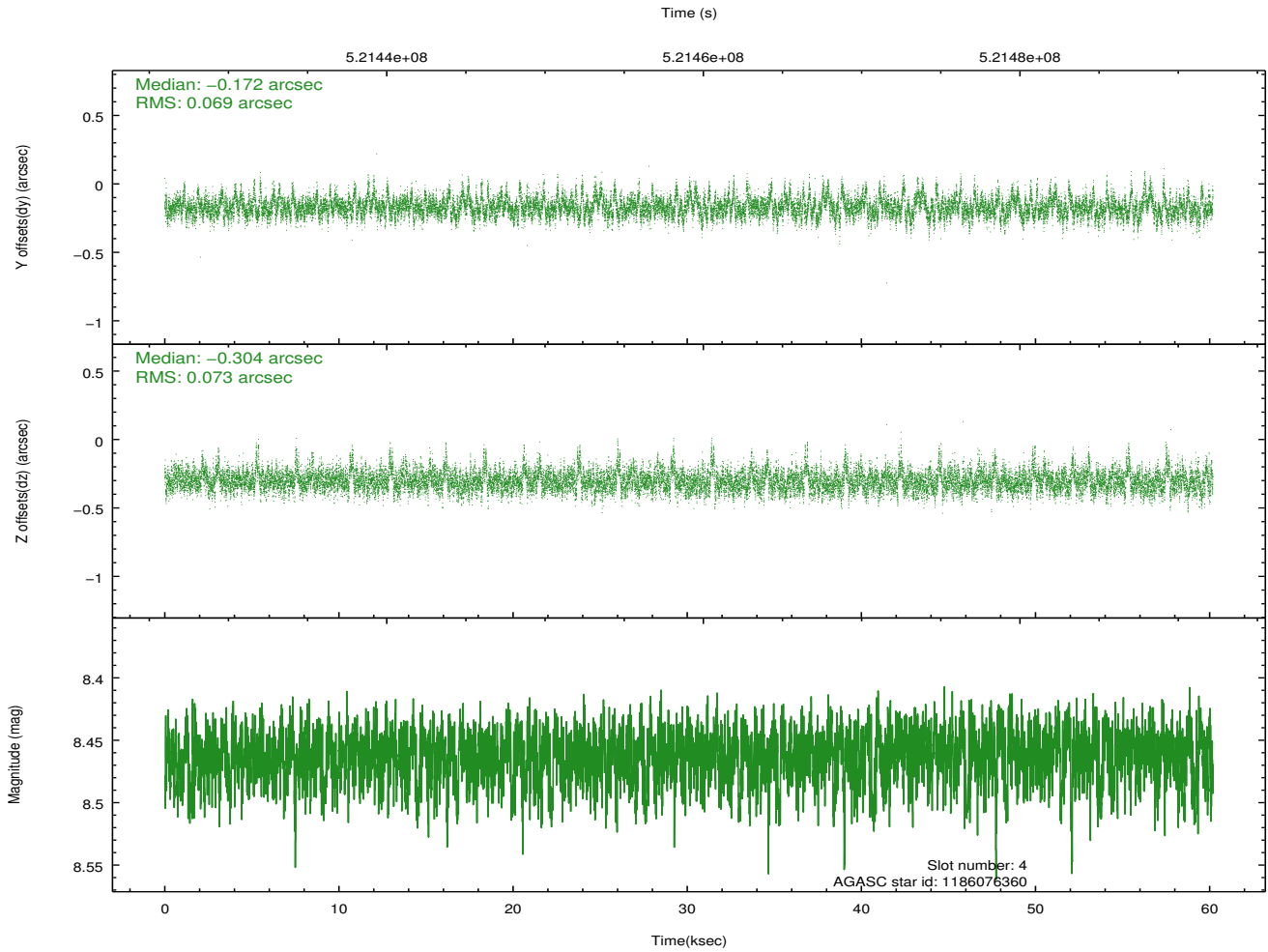
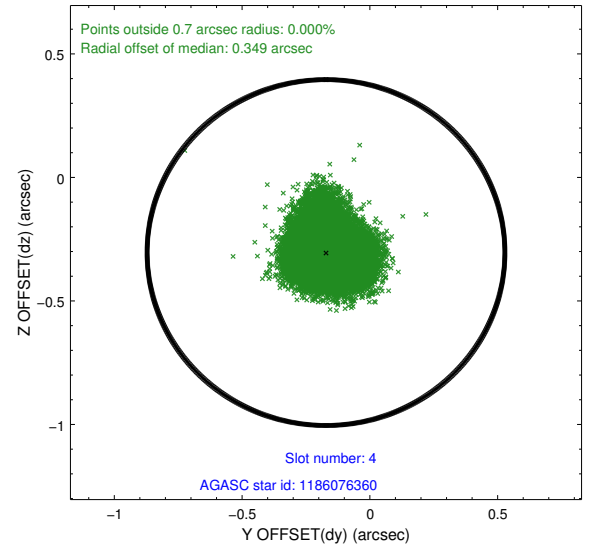
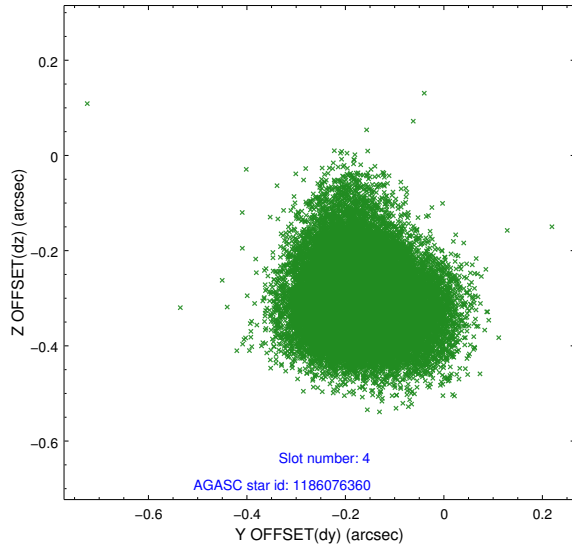
slot	status	id	mag	n_pts	med_dy	med_dz	dr1	dr2	ra	dec	mean_y	mean_z
0	FID	HRC-S-2	7.01	14680	0.198	-0.180	0.025	0.066	0.000000	0.000000	1216.82	-462.77
1	FID	HRC-S-3	7.05	14679	-0.129	-0.072	0.019	0.034	0.000000	0.000000	-1185.88	559.33
2	FID	HRC-S-4	6.97	14679	0.340	-0.043	0.023	0.071	0.000000	0.000000	1215.41	562.13
3	GUIDE	1186072296	9.36	29336	0.001	0.009	0.145	0.240	247.909553	-67.035246	-1250.14	870.74
4	GUIDE	1186076360	8.46	29347	-0.172	-0.304	0.105	0.177	248.266100	-67.434021	168.42	328.10
5	GUIDE	1215569992	9.25	29335	-0.148	-0.233	0.146	0.244	249.398538	-67.627995	1713.89	1054.03
6	GUIDE	1215570568	8.41	29352	0.163	0.257	0.102	0.171	246.859352	-67.889721	209.61	-2200.51
7	GUIDE	1186071656	9.39	29176	0.159	0.266	0.153	0.248	247.561655	-67.321127	-767.91	-161.06

2.4 Star Slots

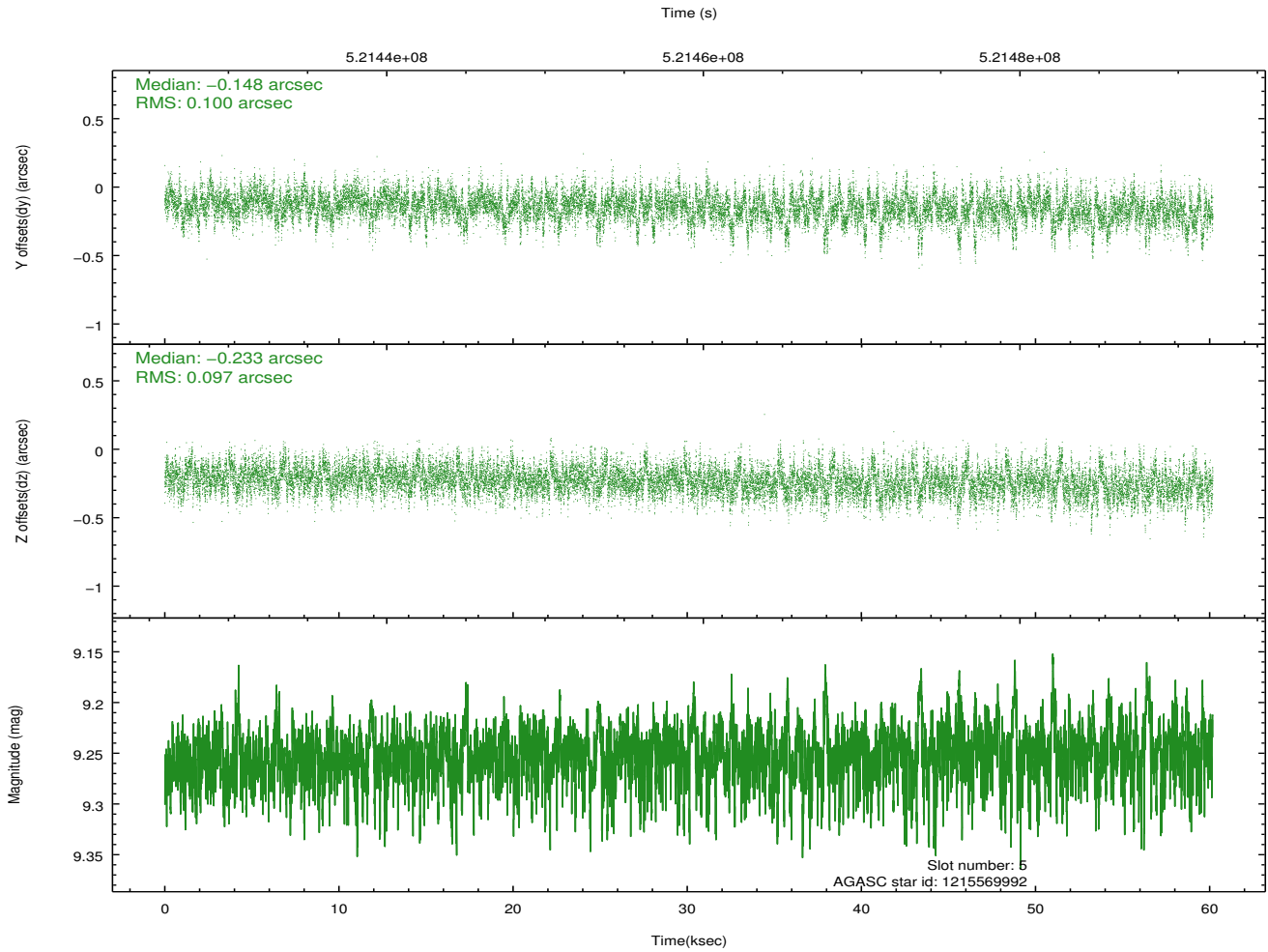
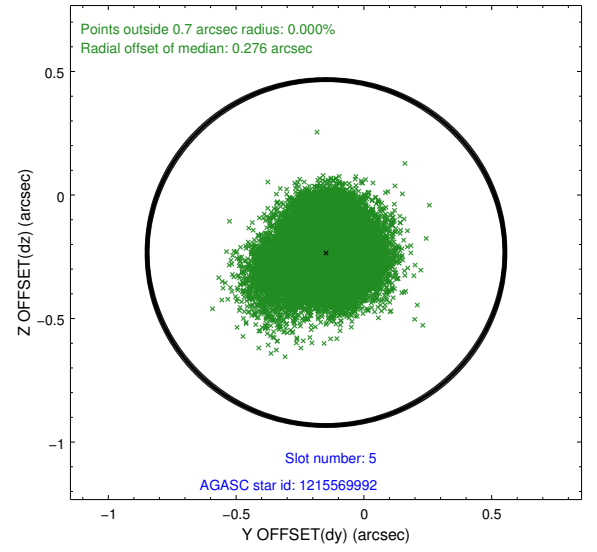
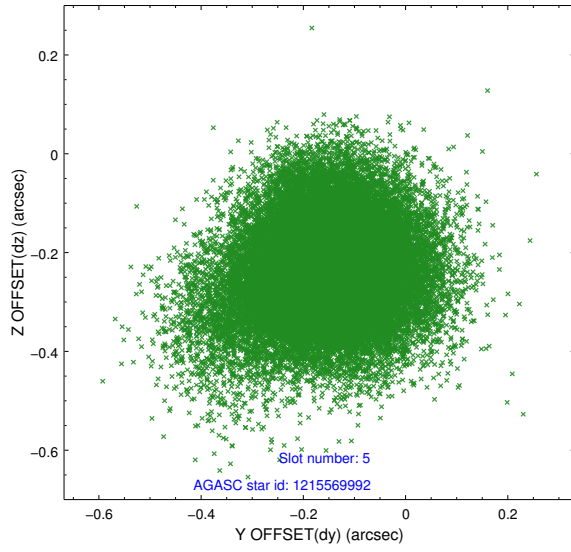
2.4.1 Slot 3



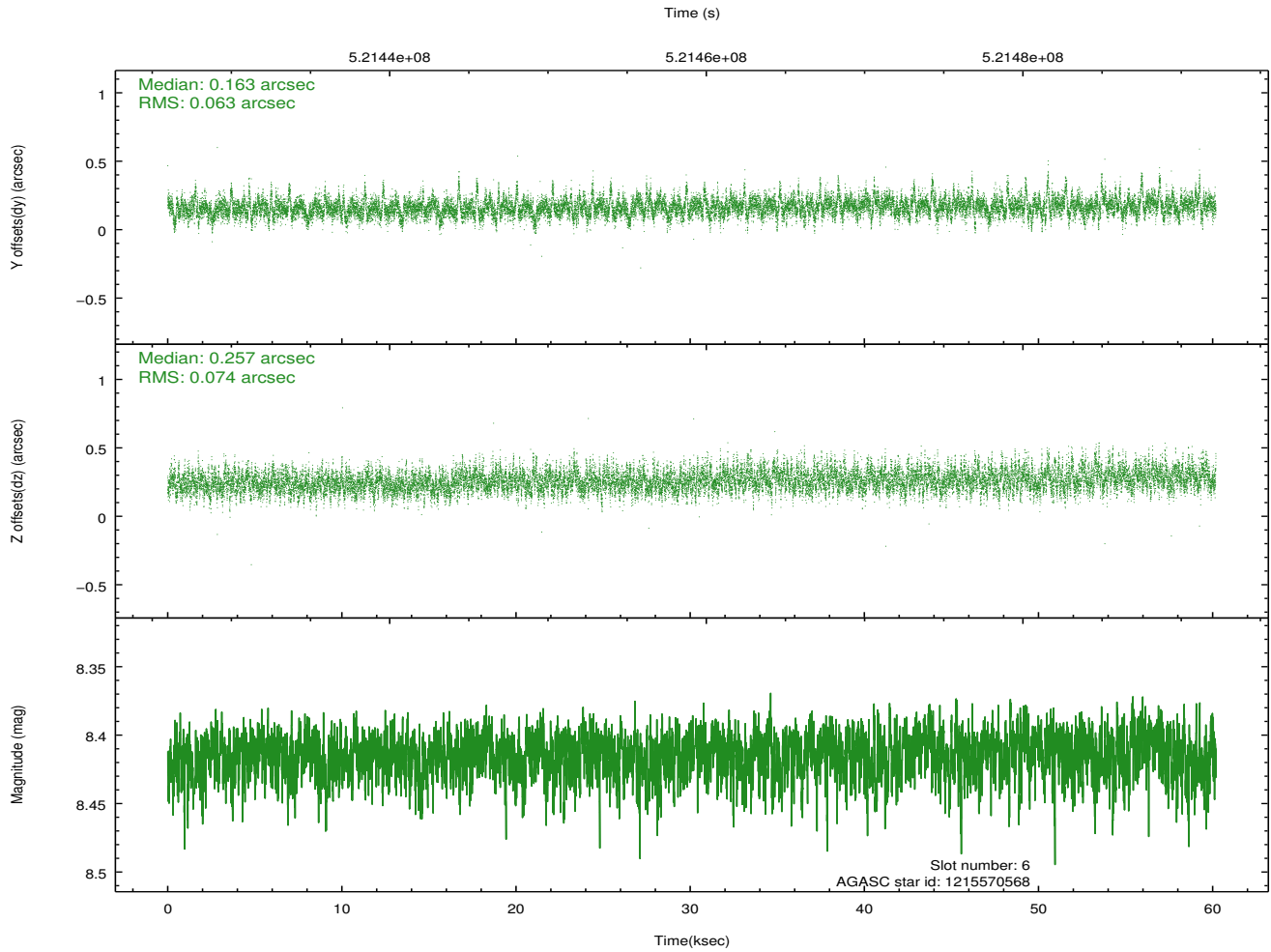
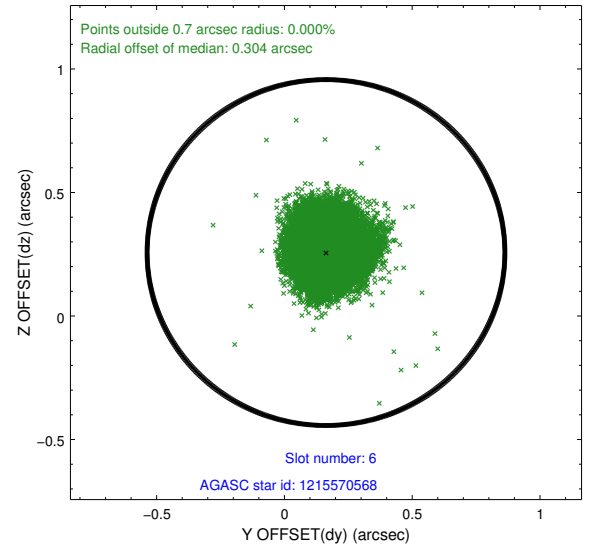
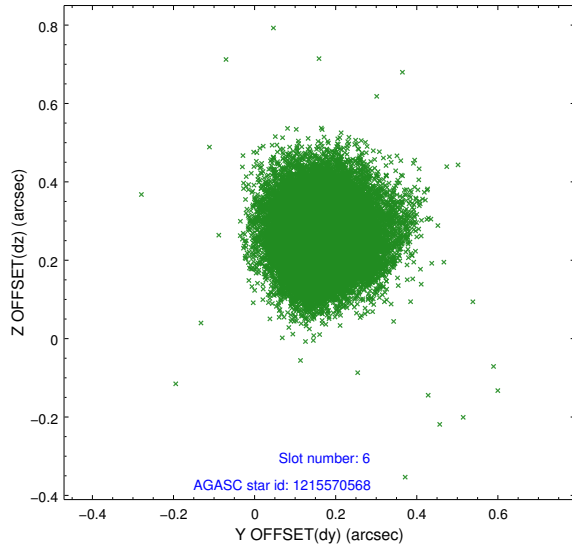
2.4.2 Slot 4



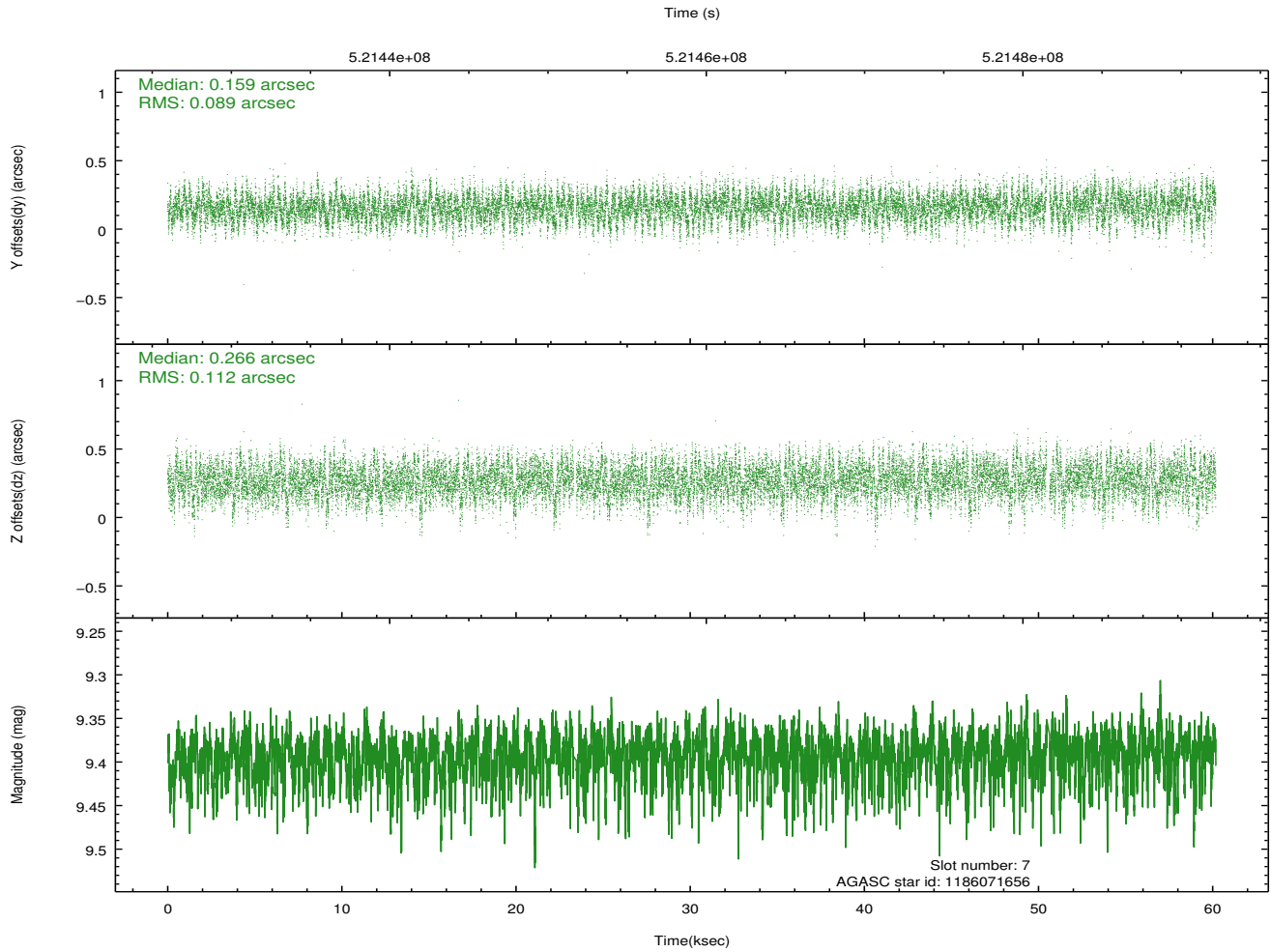
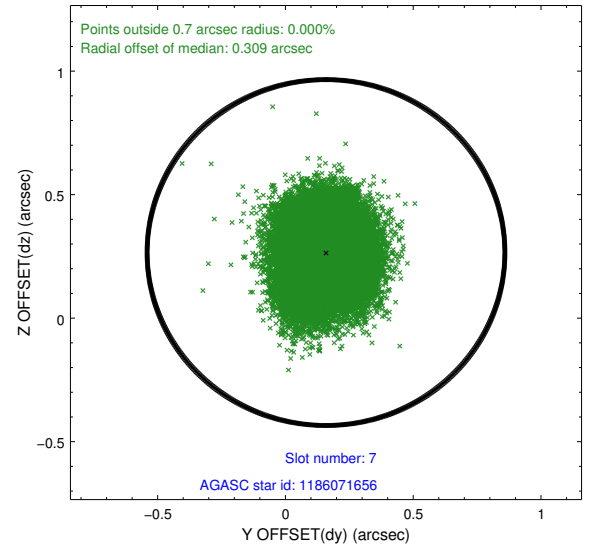
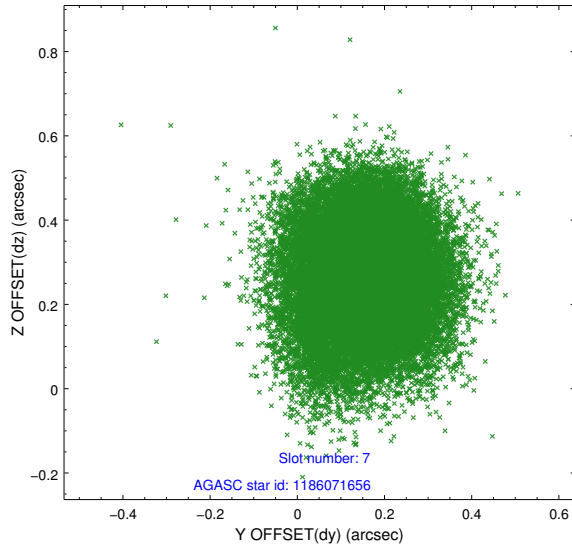
2.4.3 Slot 5



2.4.4 Slot 6

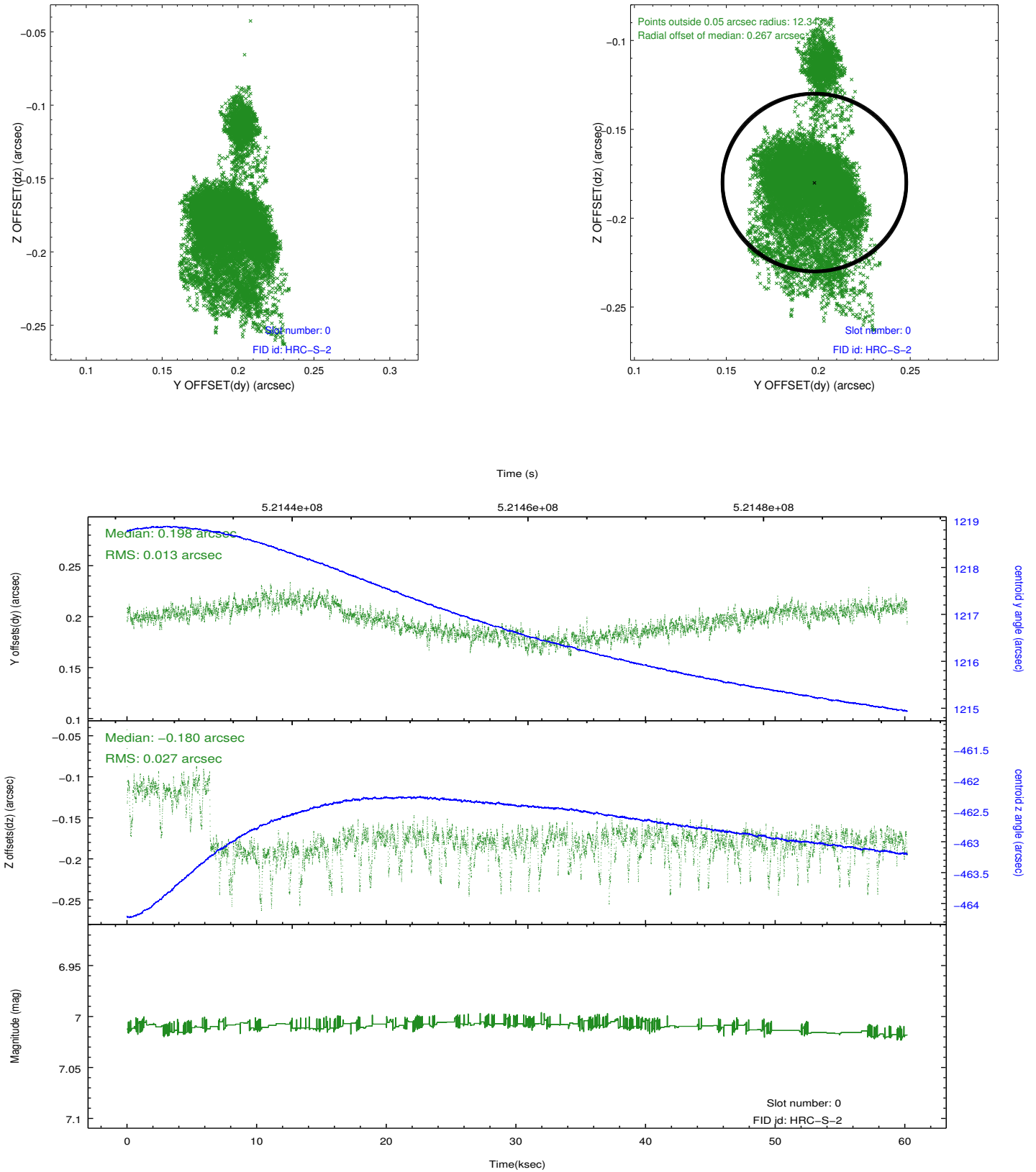


2.4.5 Slot 7

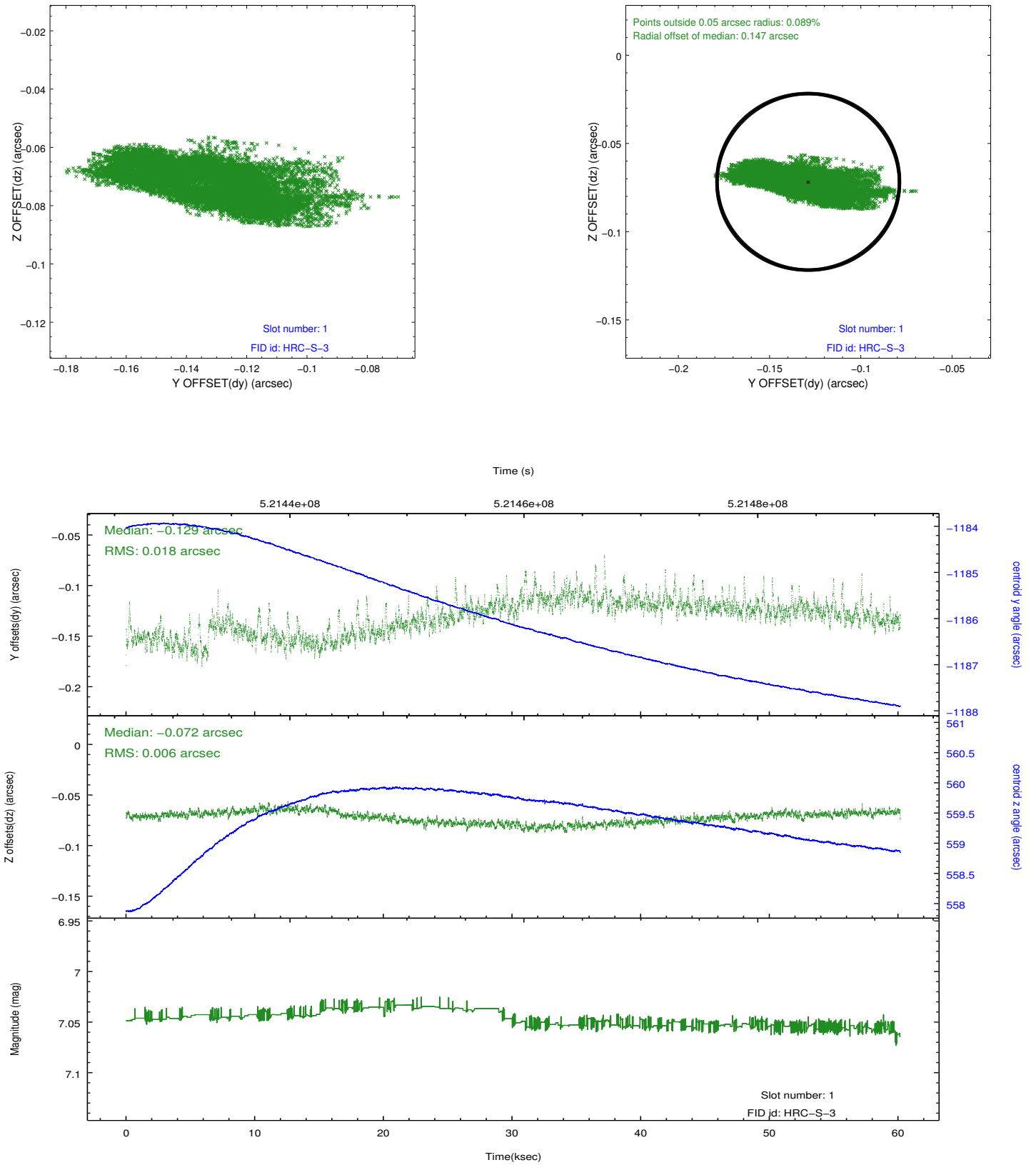


2.5 FID Slots

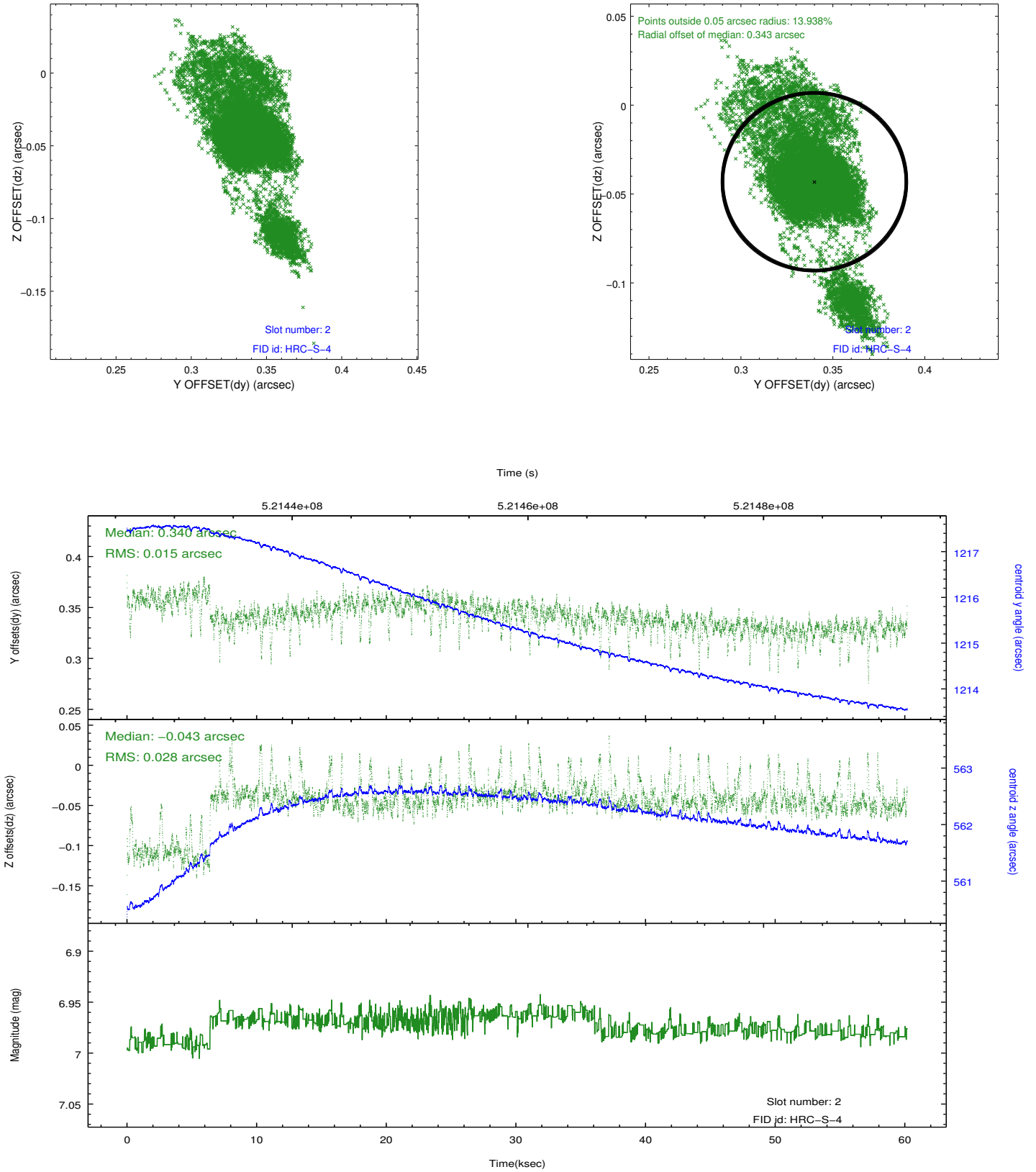
2.5.1 Slot 0



2.5.2 Slot 1

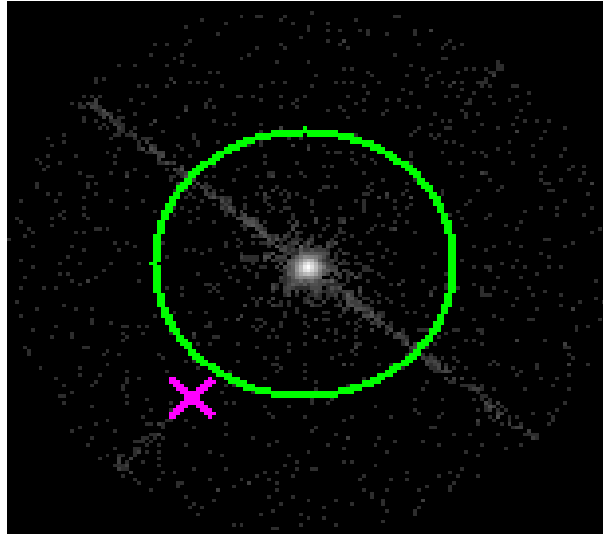


2.5.3 Slot 2

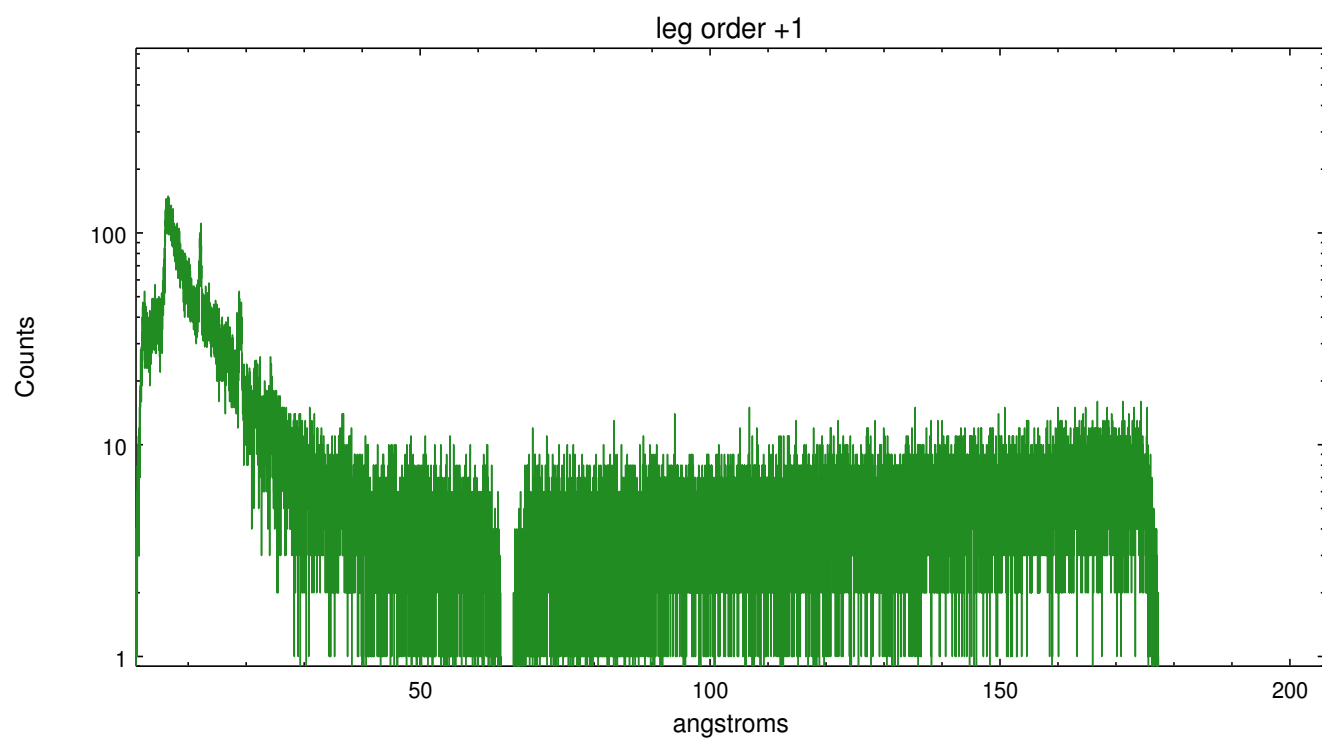
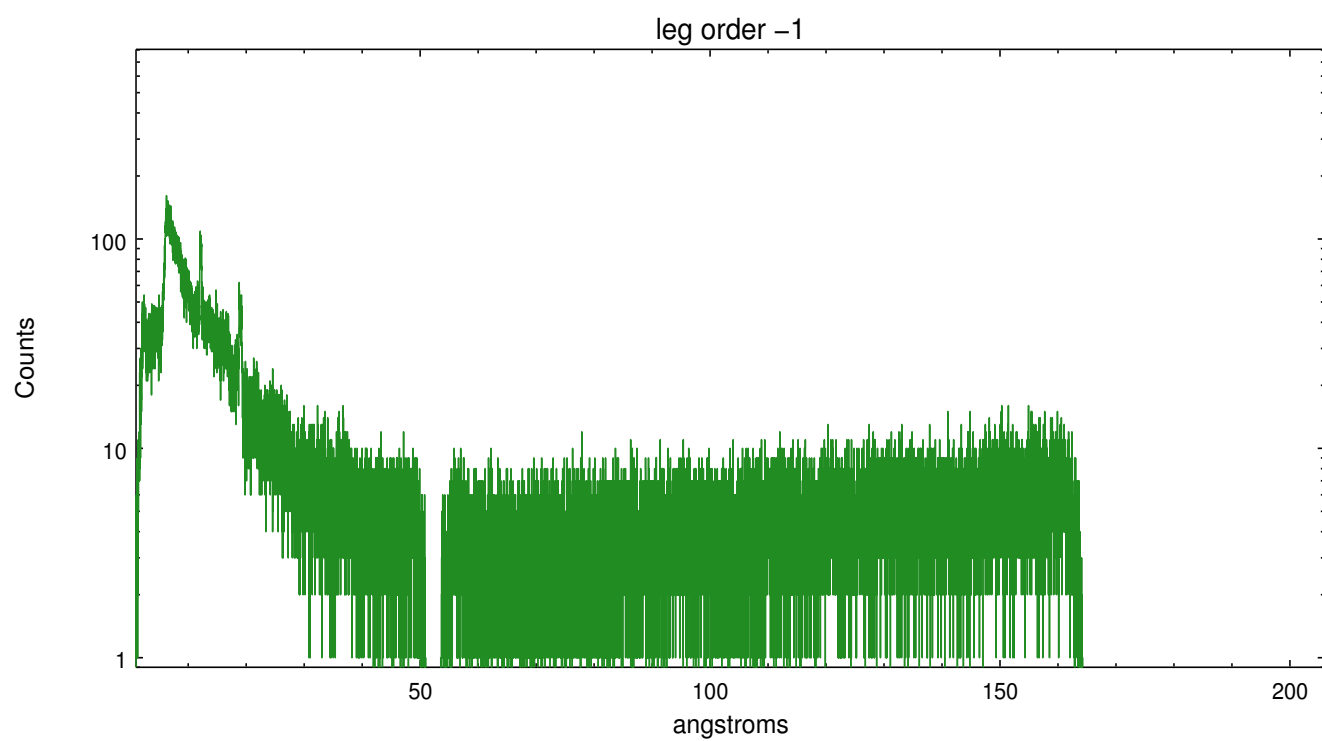


3 Gratings

3.1 LETG Arm



LETG Zero Order



A Summary

A.1 Status

V&V Scientist	Joy Nichols
V&V Date (YYYY-MM-DD)	2014.07.14
V&V Edition	1
V&V Disposition and Status	OK
V&V Charge Time	59.793634560704

A.2 Comments