

# V&V Reference Report

## L2 ASCDS Version : 10.2.4

Observation 16510 - L2 Version 1  
Chandra X-Ray Center

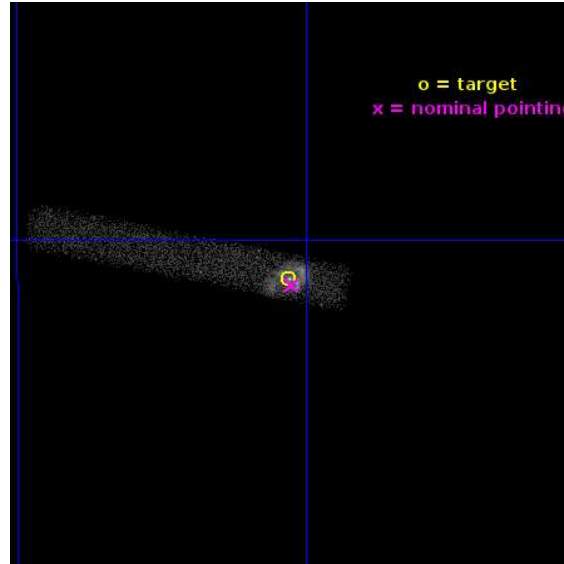
L2 Processing Date : Aug 23 2014

## Contents

<b>1</b>	<b>Front</b>	<b>2</b>
<b>2</b>	<b>OBI</b>	<b>3</b>
2.1	OBI . . . . .	3
2.1.1	Images . . . . .	3
2.1.2	Bias . . . . .	3
2.1.3	Parameters . . . . .	4
2.1.4	Events . . . . .	4
2.2	Compared Parameters . . . . .	5
2.3	Aspect . . . . .	6
2.4	Star Slots . . . . .	9
2.4.1	Slot 3 . . . . .	9
2.4.2	Slot 4 . . . . .	10
2.4.3	Slot 5 . . . . .	11
2.4.4	Slot 6 . . . . .	12
2.4.5	Slot 7 . . . . .	13
2.5	FID Slots . . . . .	14
2.5.1	Slot 0 . . . . .	14
2.5.2	Slot 1 . . . . .	15
2.5.3	Slot 2 . . . . .	16
<b>A</b>	<b>Summary</b>	<b>17</b>
A.1	Status . . . . .	17
A.2	Comments . . . . .	17

# 1 Front

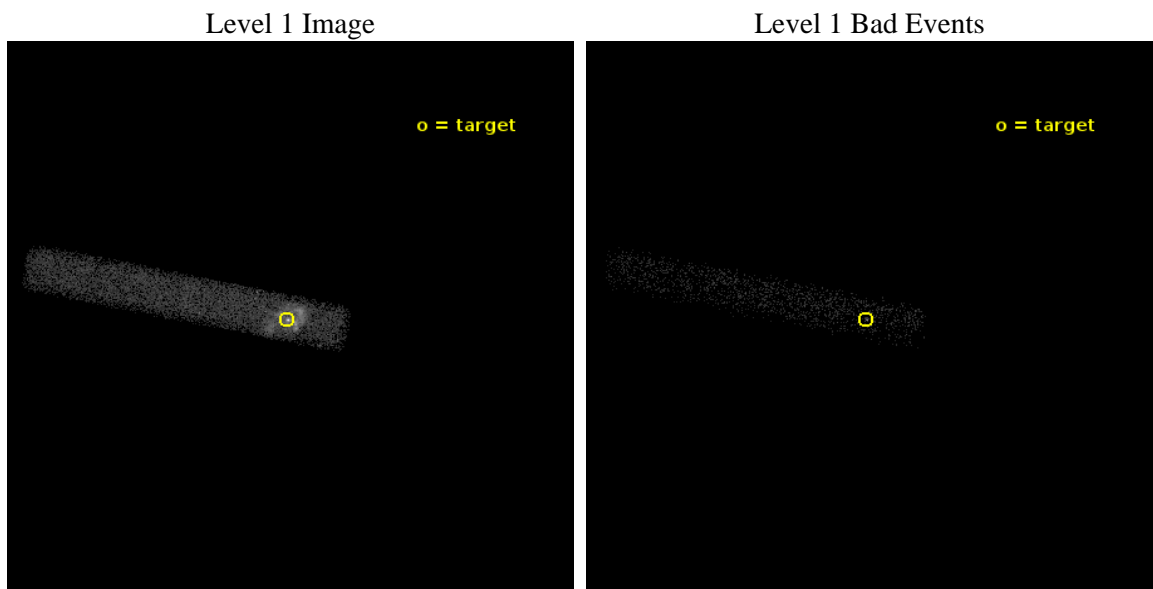
seq_num	200945	Sequence number
obs_id	16510	Observation id
title	Probing the wind/radiative interactions with the circumstellar material at Periastron Passage of Eta Carinae	Proposal title
observer	Dr Kenji Hamaguchi	Principal investigator
object	Eta Carinae	Source name
dtcycle	0	&#160
cycle	P	events from which exps? Prim/Second/Both
ra_targ	161.265	Observer's specified target RA [deg]
dec_targ	-59.6845	Observer's specified target Dec [deg]
ra_nom	161.26274356029	Nominal RA [deg]
dec_nom	-59.687368913961	Nominal Dec [deg]
roll_nom	191.65465267486	Nominal Roll [deg]
revision	1	Processing version of data
ontime	15069.199101806	Sum of GTIs [s]
livetime	13666.96816779	Livetime [s]
ontime7	15069.199101806	Sum of GTIs [s]
l2events	16960	Number of level 2 events



## 2 OBI

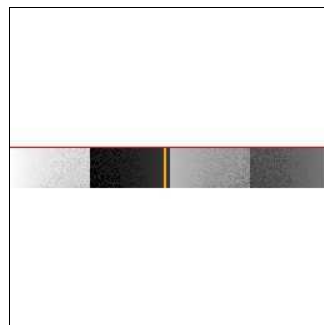
### 2.1 OBI

#### 2.1.1 Images



#### 2.1.2 Bias

Chip 7



### 2.1.3 Parameters

obi_num	0	Obi number	sched_exp_time	15000.000000	[s] Scheduled observation exposure time
ascdsver	10.2.4	Processing system revision	ontime	15069.199101806	Sum of GTIs [s]
caldsver	4.6.2	&#160	ontime7	15069.199101806	Sum of GTIs [s]
date	2014-08-23T07:32:33	Date and time of file creation	l1events	24634	Number of level 1 events
revision	1	Processing version of data			

### 2.1.4 Events

	<b>ccd 7</b>
level 1 events	24634
rejected events	7335
rejected %	29%

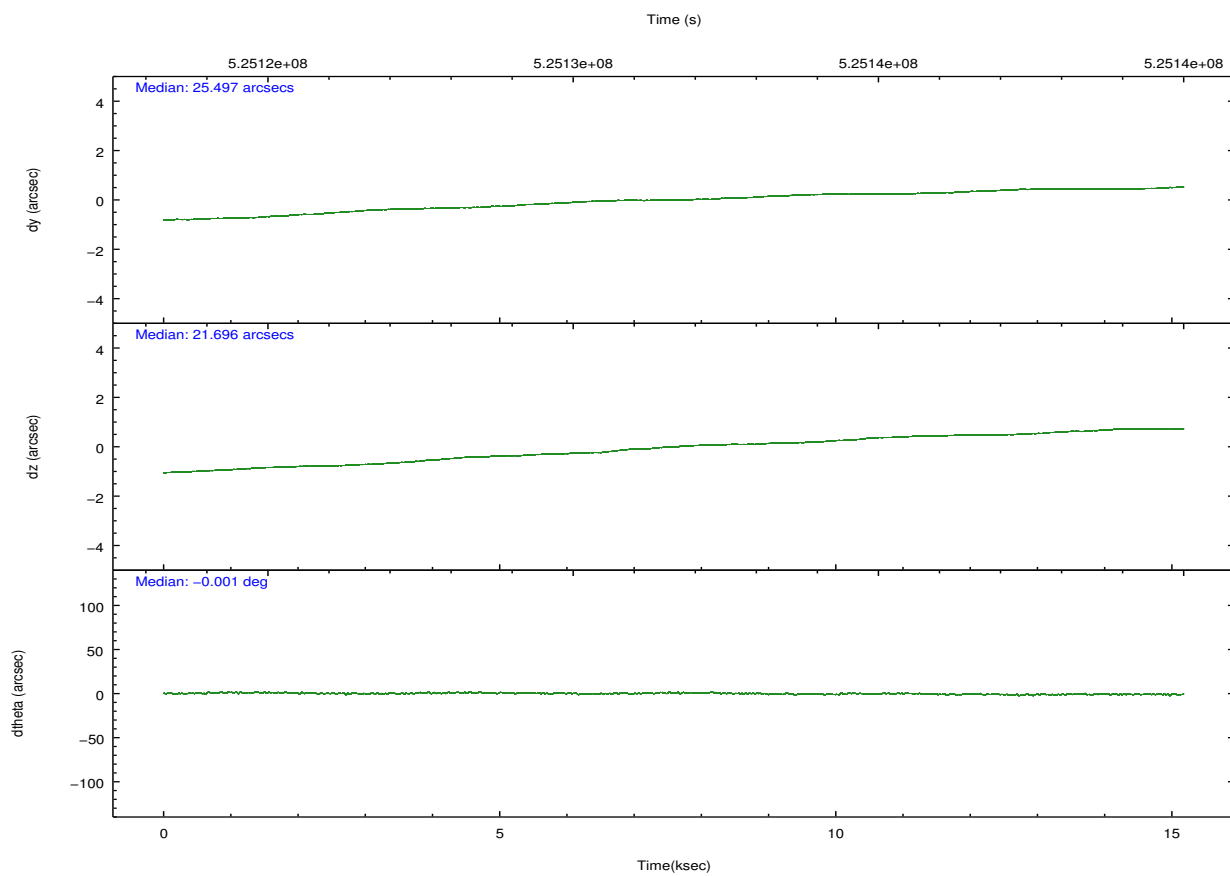
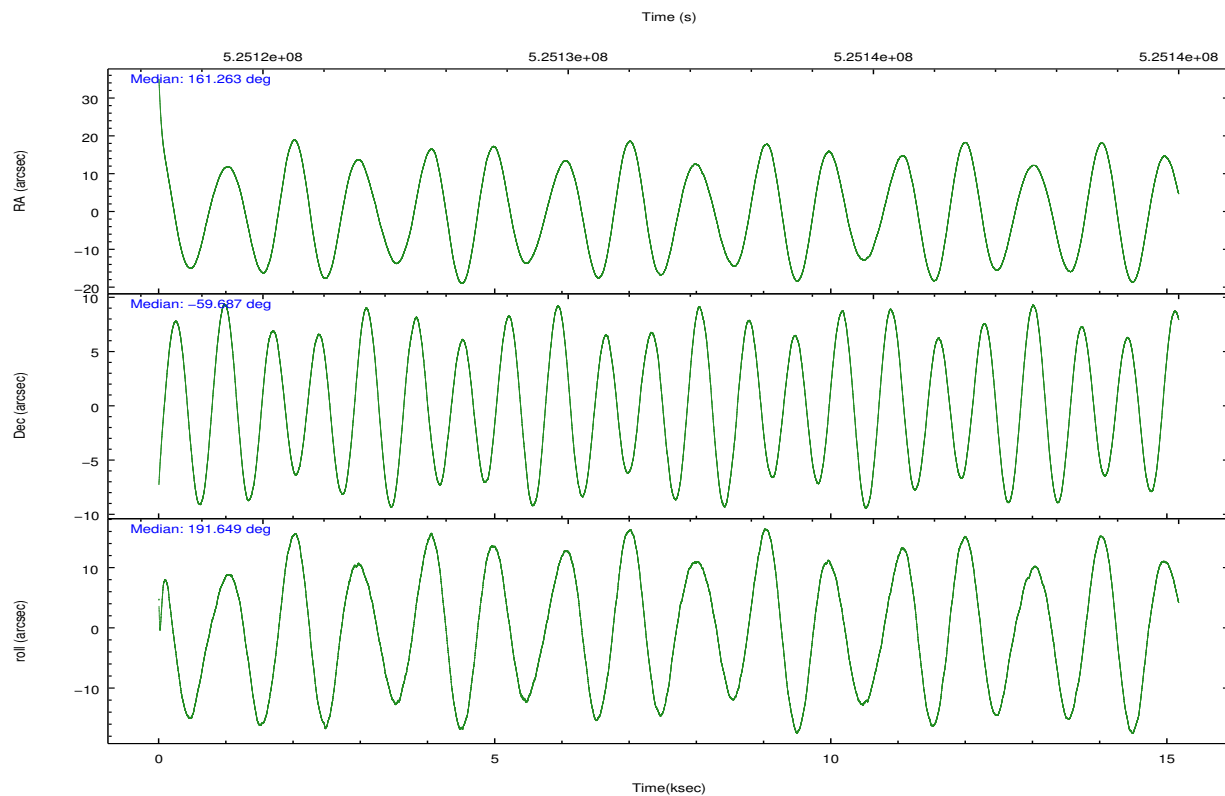
	<b>ccd 7</b>
grade 0 events	3499
	14%
grade 1 events	29
	0%
grade 2 events	4015
	16%
grade 3 events	2161
	8%
grade 4 events	2034
	8%
grade 5 events	1583
	6%
grade 6 events	5590
	22%
grade 7 events	5723
	23%



## 2.2 Compared Parameters

Parameter	Planned	Actual	Parameter	Planned	Actual
Instrument	ACIS	ACIS	Obspar format version number	7	7
Detector	ACIS-7	ACIS-7	Obspar file type	PREDICTED	ACTUAL
Grating	NONE	NONE	Obspar update status	NONE	UPDATED
Data mode	FAINT	FAINT	Number of optional ACIS chips dropped	0	0
Observation mode	POINTING	POINTING	On-chip summing requested	N	N
[deg] Pointing RA	161.302819	161.2627435602944	Subarray requested	CUSTOM	1/8
[deg] Pointing Dec	-59.668877	-59.68736891396131	Subarray start row	449	449
[deg] Pointing Roll	191.532648	191.6546526748603	Subarray row count	128	128
[s] Window start time (MET)	524448067.184000	524448067.184000	Alternating exposures requested	N	N
[s] Window stop time (MET)	525139267.184000	525139267.184000	[s] Primary exposure time	0.000000	0.4
[mm] SIM focus pos	-0.684267	-0.6828225247311905			
[mm] SIM defocus	0	0.001444936568705701			
[mm] SIM translation stage pos	-190.132523	-190.1425803651734			
[mm] SIM translation stage offset	0	0.01005778216563158			
[s] Observation start time (MET)	525124239.184000	525123445.40911			
Observation start date	2014-08-22T19:49:32	2014-08-22T19:37:25			
[s] Observation end time (MET)	525139239.184000	525140276.93504			
Observation end date	2014-08-22T23:59:32	2014-08-23T00:17:56			
Read mode	TIMED	TIMED			

## 2.3 Aspect

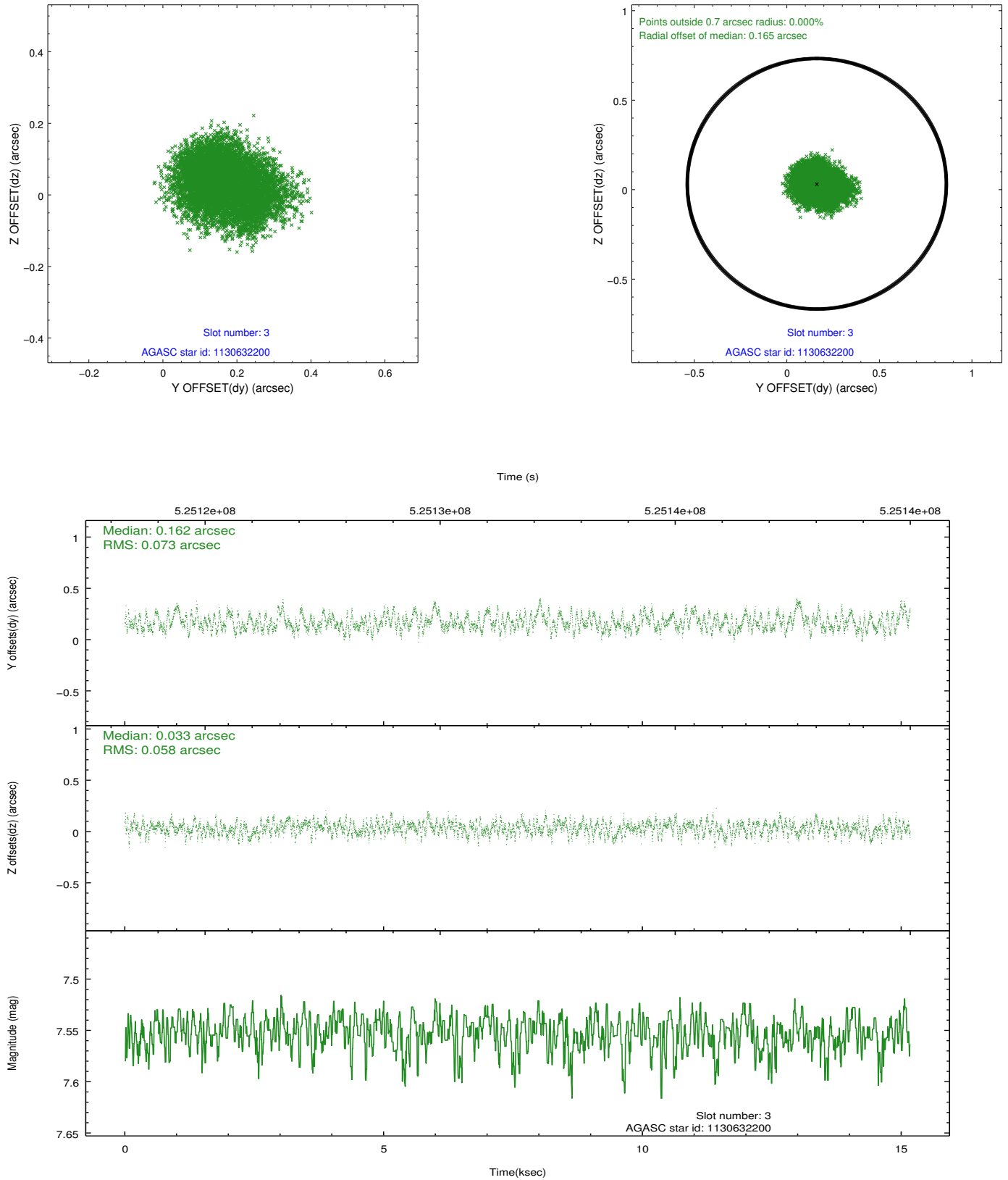


### Slot Statistics

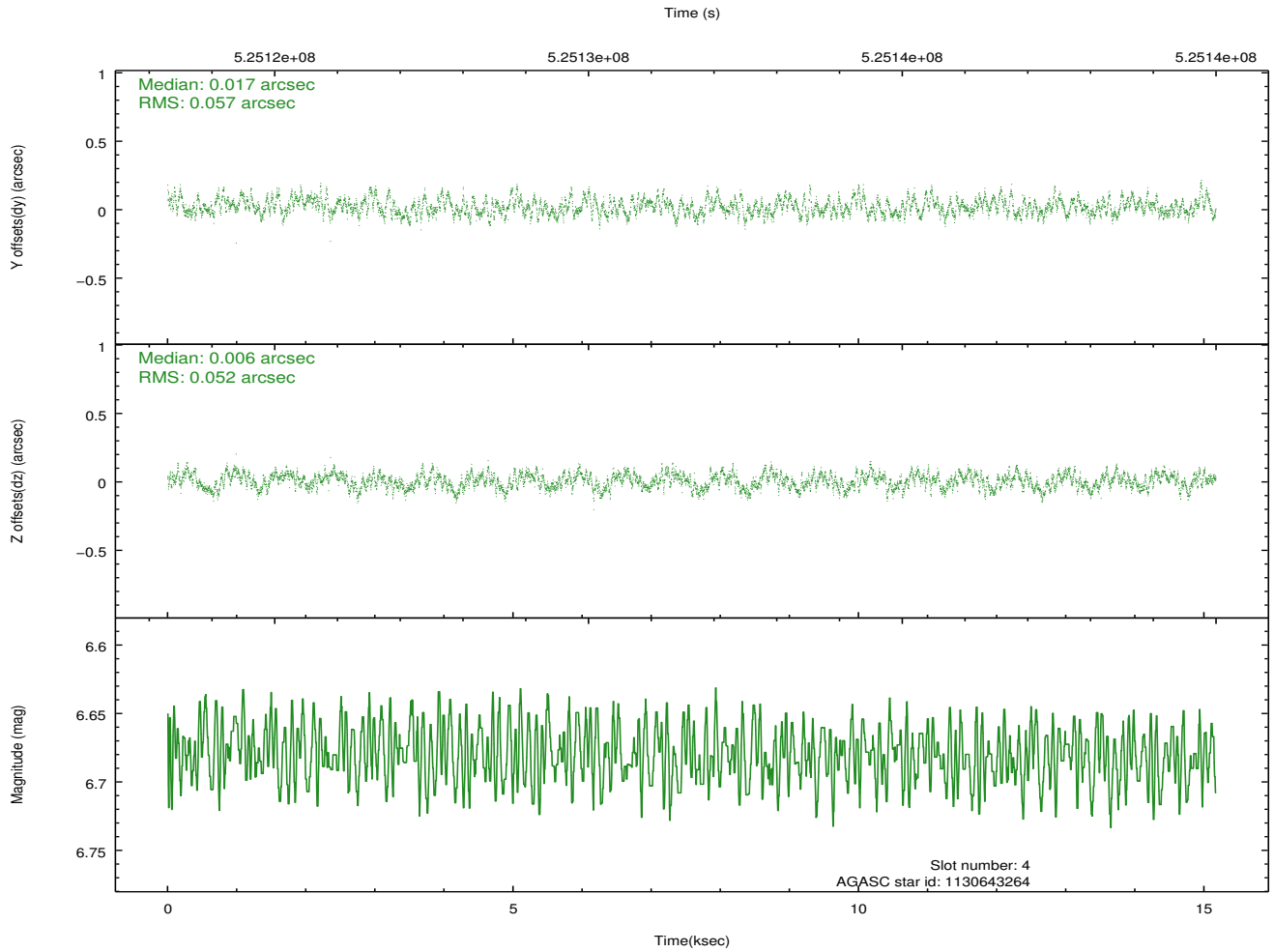
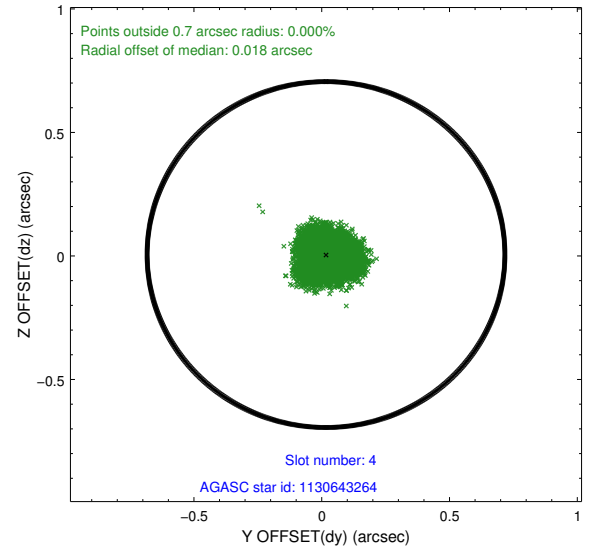
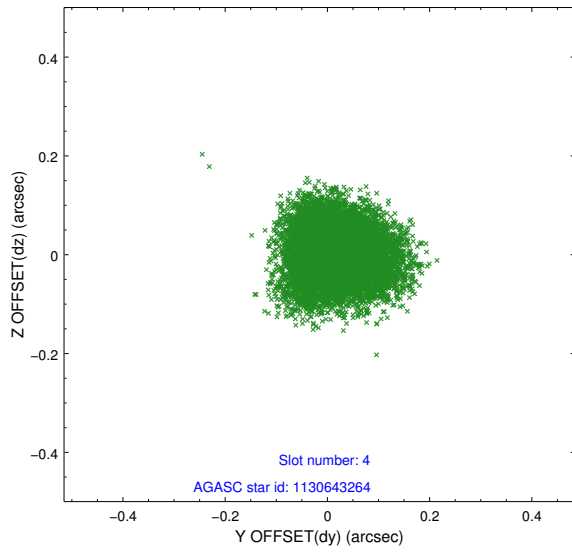
slot	status	id	mag	n_pts	med_dy	med_dz	dr1	dr2	ra	dec	mean_y	mean_z
0	FID	ACIS-S-1	7.02	3701	0.053	-0.022	0.021	0.041	0.000000	0.000000	917.25	-1738.83
1	FID	ACIS-S-2	6.94	3701	-0.235	-0.102	0.009	0.016	0.000000	0.000000	-778.78	-1743.65
2	FID	ACIS-S-4	7.03	3701	0.156	0.129	0.015	0.026	0.000000	0.000000	2134.60	165.07
3	GUIDE	1130632200	7.55	7402	0.162	0.033	0.102	0.155	161.433843	-59.407820	-422.58	-872.39
4	GUIDE	1130643264	6.68	7401	0.017	0.006	0.084	0.129	160.322990	-59.676912	1753.49	-314.52
5	GUIDE	1174033752	8.45	7393	-0.095	-0.251	0.085	0.139	162.418977	-60.164599	-1598.43	2164.54
6	GUIDE	1130636432	8.81	7400	0.076	0.433	0.133	0.206	162.263589	-58.895452	-2304.59	-2357.64
7	GUIDE	1174021440	8.39	7398	-0.167	-0.221	0.086	0.138	160.869011	-60.314711	1223.11	2125.20

## 2.4 Star Slots

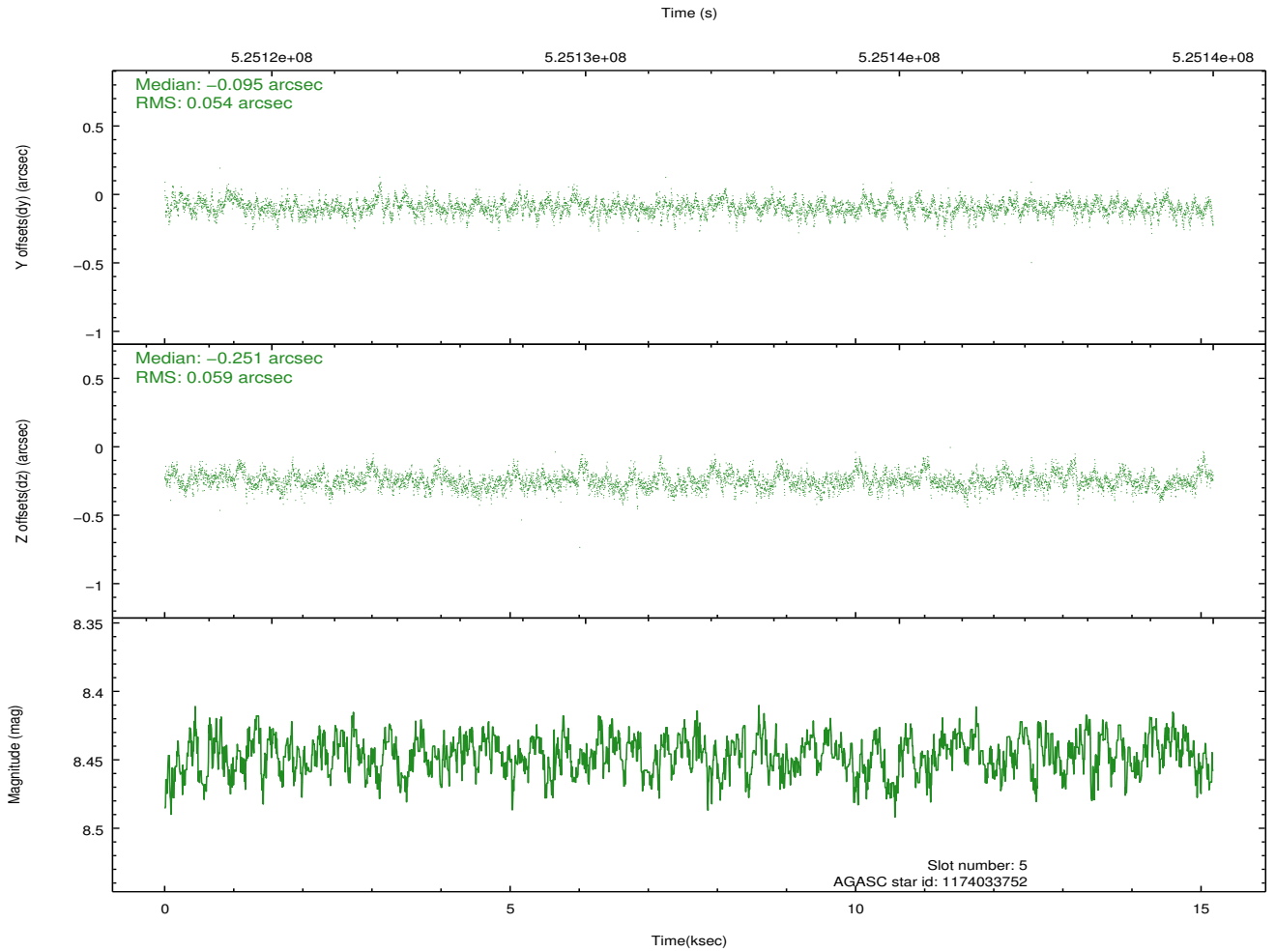
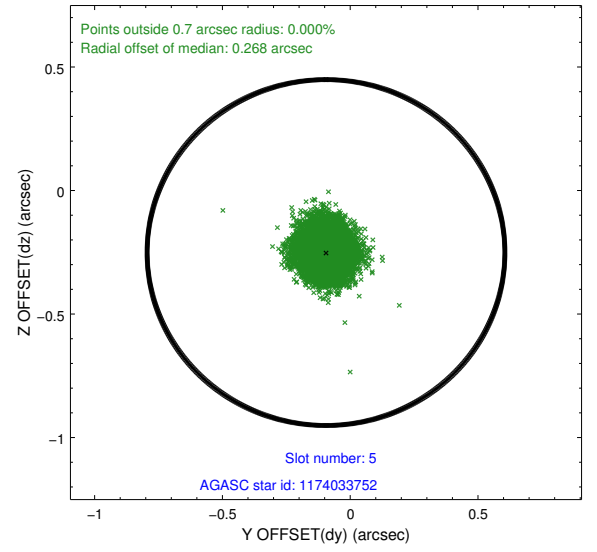
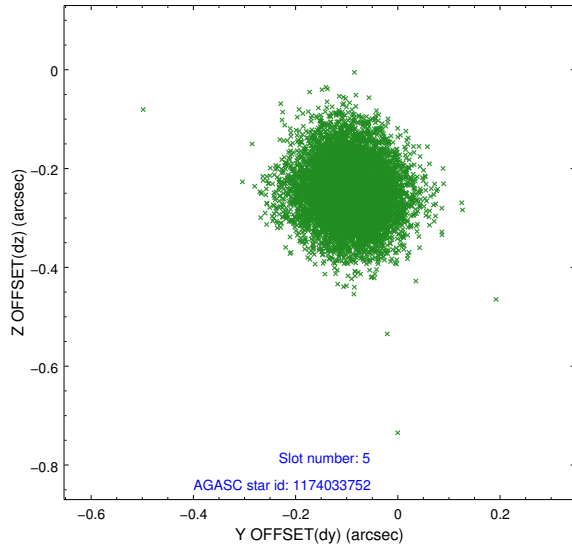
### 2.4.1 Slot 3



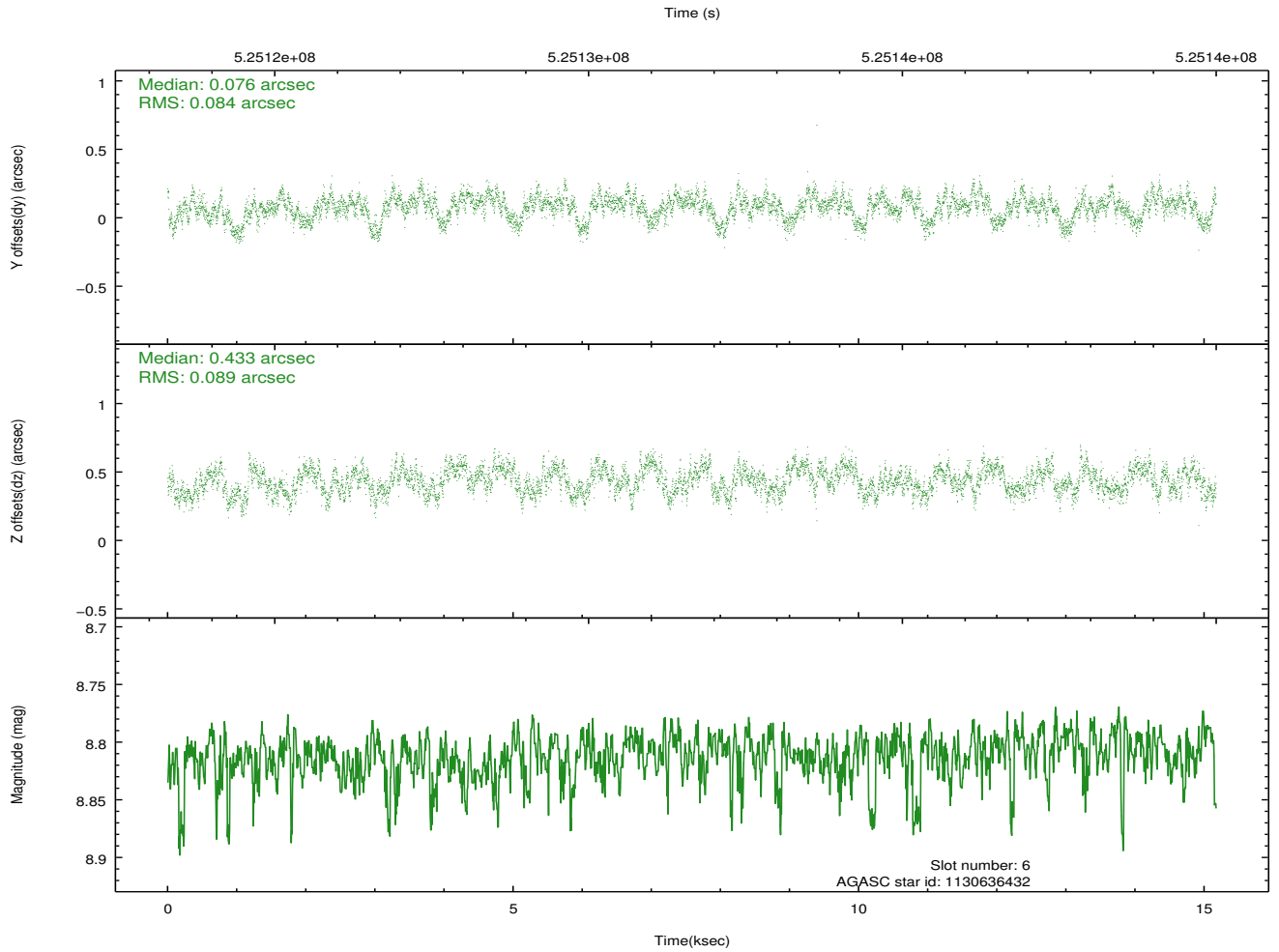
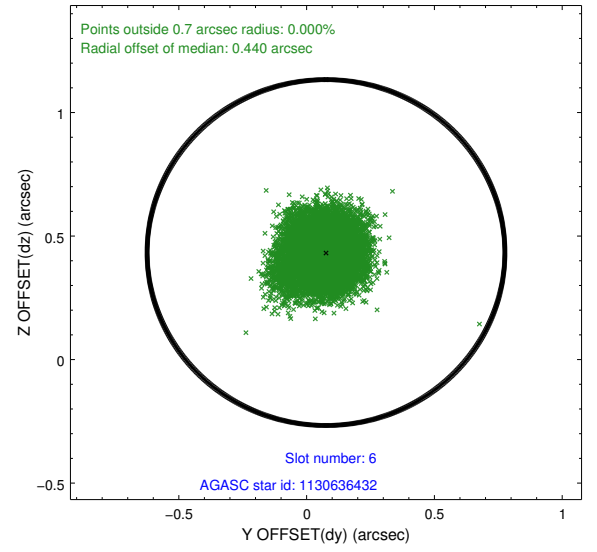
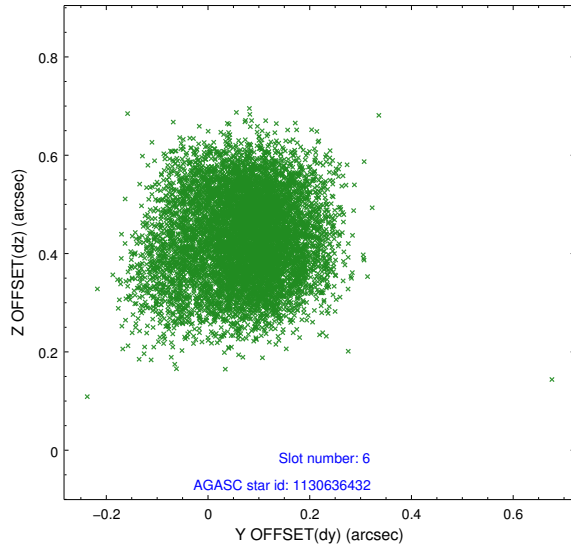
## 2.4.2 Slot 4



### 2.4.3 Slot 5

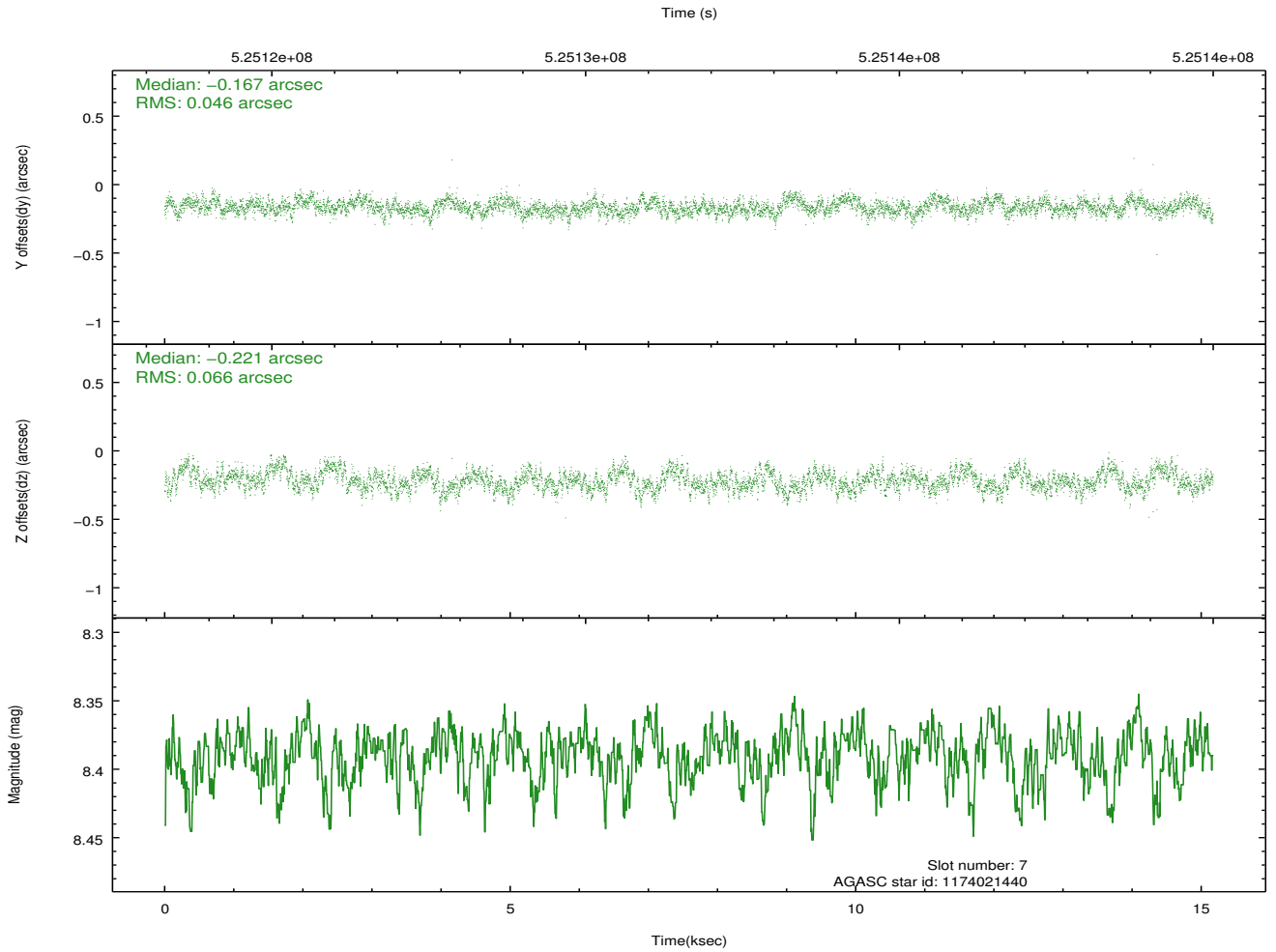
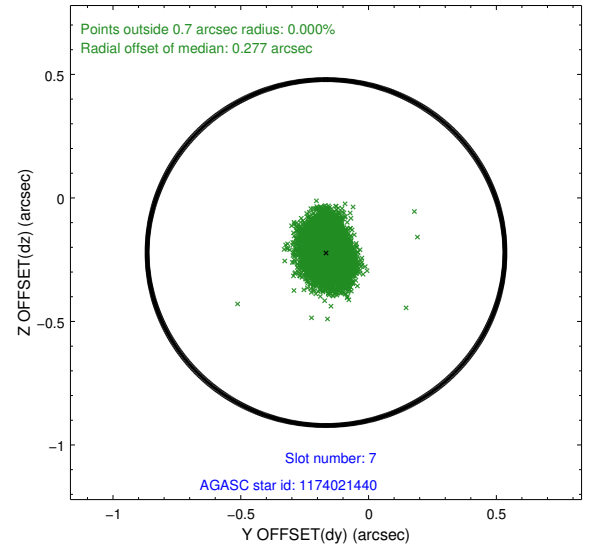
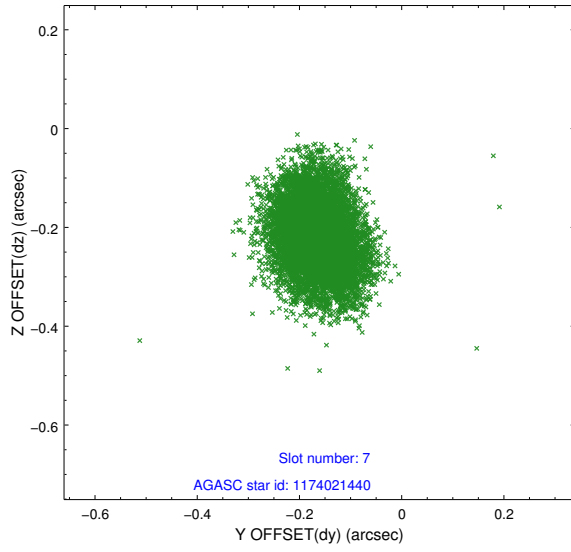


## 2.4.4 Slot 6



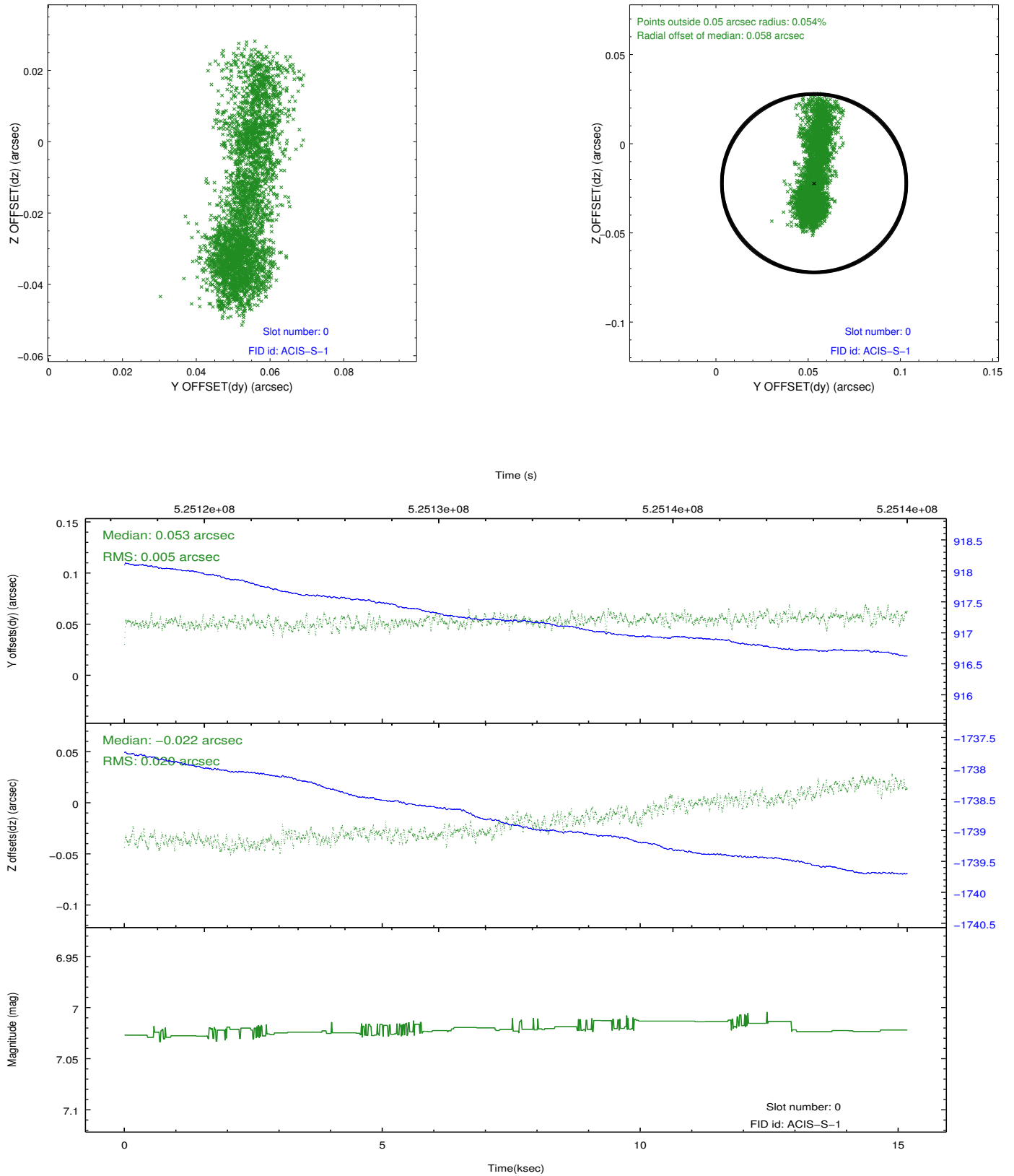


## 2.4.5 Slot 7

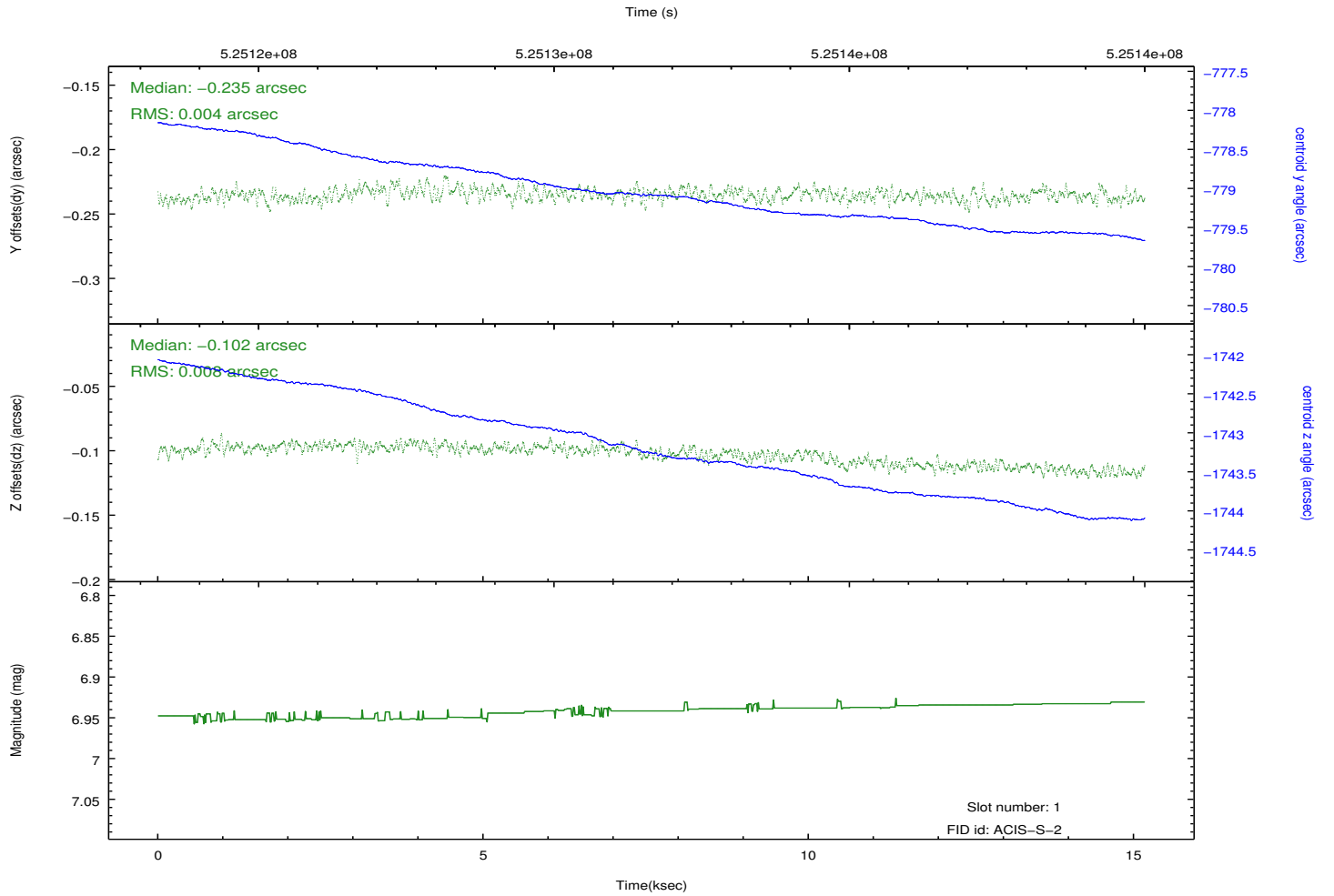
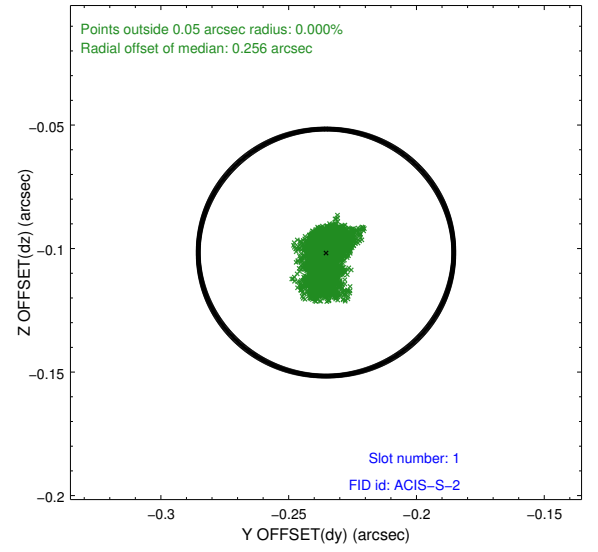
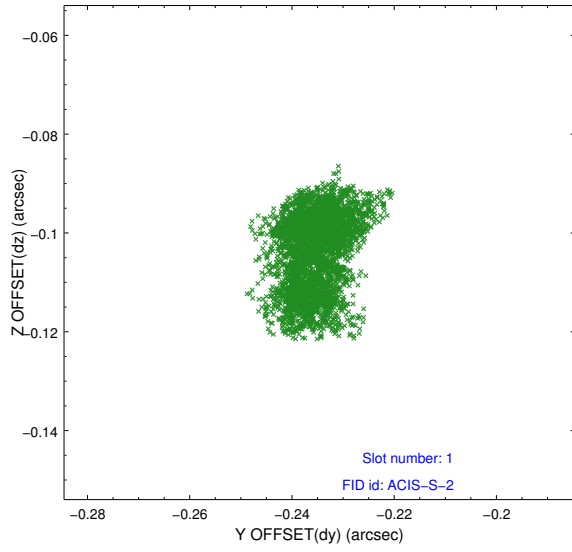


## 2.5 FID Slots

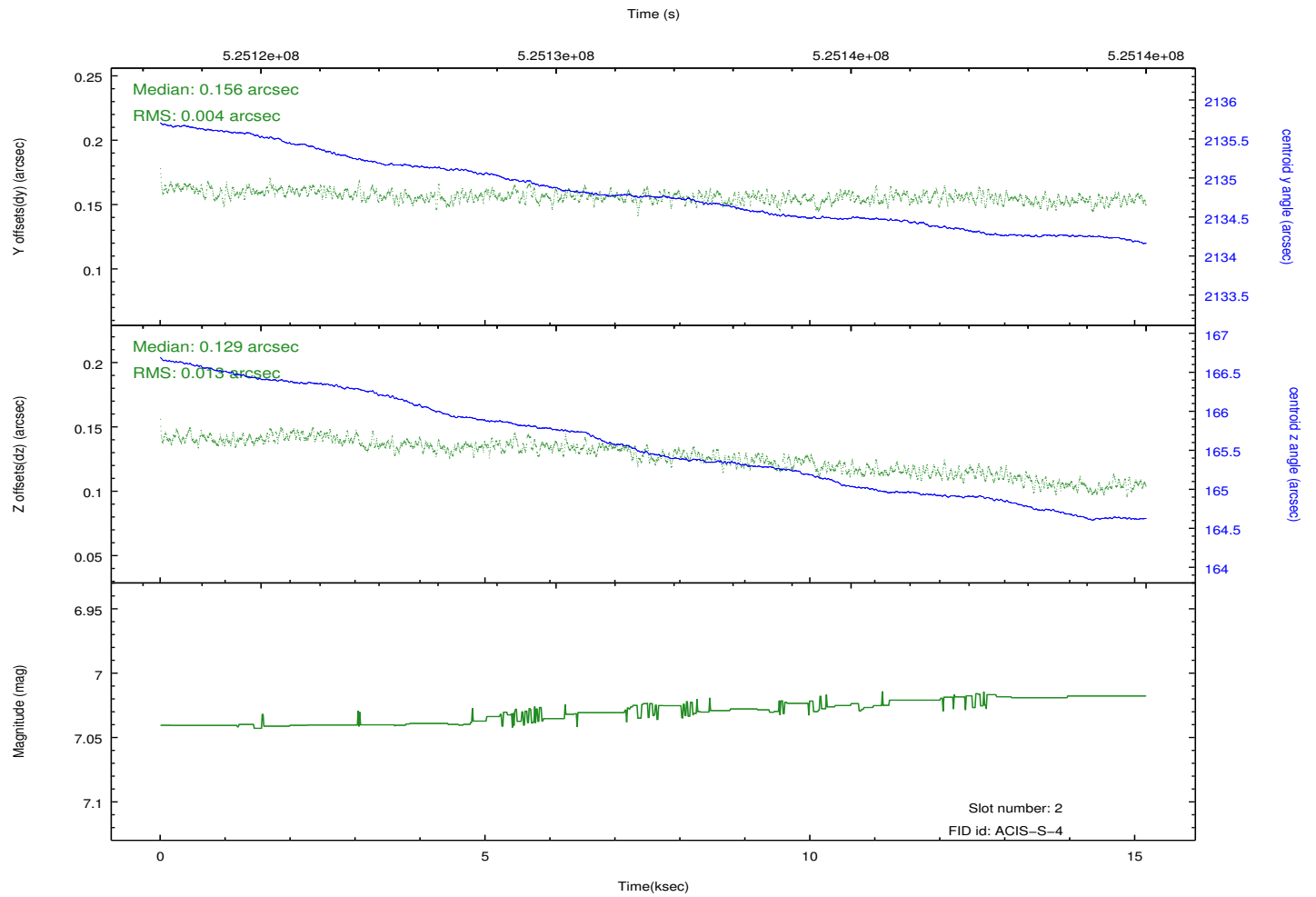
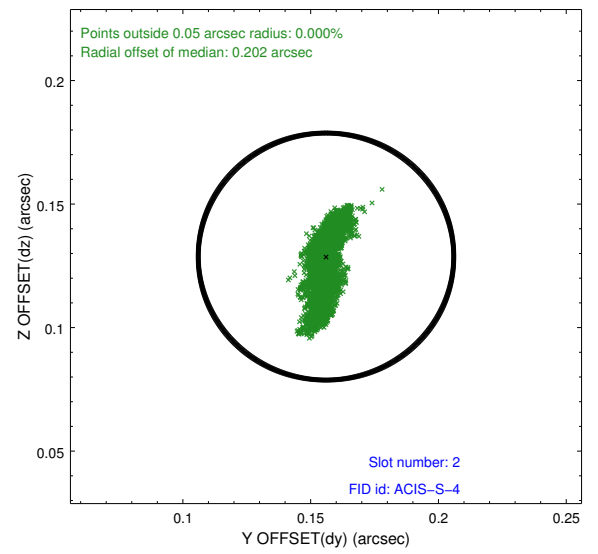
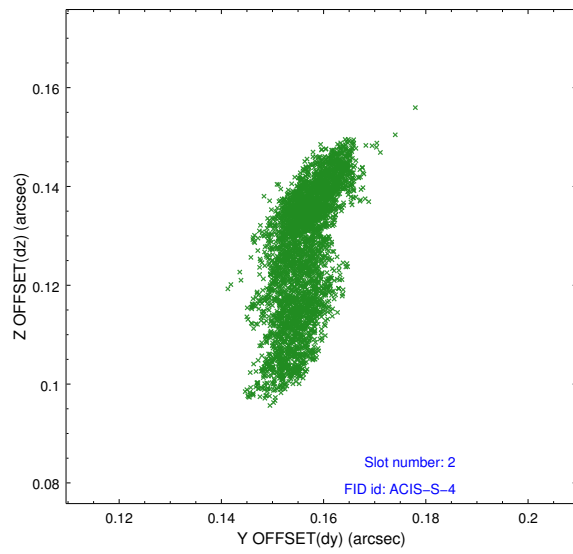
### 2.5.1 Slot 0



## 2.5.2 Slot 1



### 2.5.3 Slot 2



## A Summary

### A.1 Status

V&V Scientist	Beth Sundheim
V&V Date (YYYY-MM-DD)	2014.08.23
V&V Edition	1
V&V Disposition and Status	OK
V&V Charge Time	15.069199101806

### A.2 Comments

Window preference met.