

V&V Reference Report

L2 ASCDS Version : 10

Observation 15301 - L2 Version 2
Chandra X-Ray Center

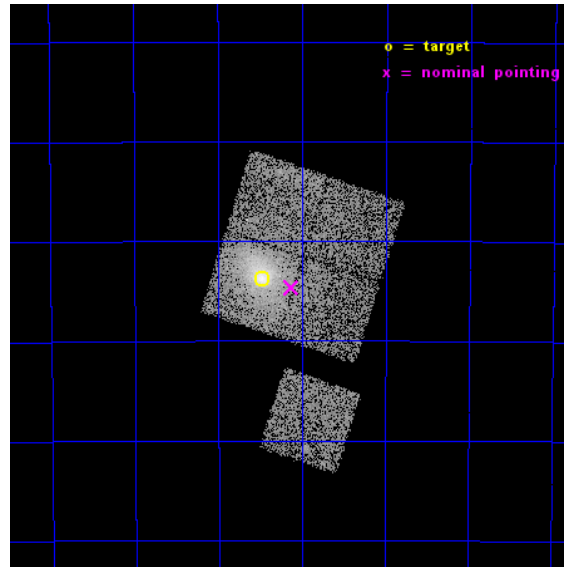
L2 Processing Date : Dec 3 2014

Contents

1	Front	2
2	OBI	3
2.1	OBI	3
2.1.1	Images	3
2.1.2	Bias	3
2.1.3	Parameters	4
2.1.4	Events	4
2.2	Compared Parameters	5
2.3	Aspect	6
2.4	Star Slots	9
2.4.1	Slot 3	9
2.4.2	Slot 4	10
2.4.3	Slot 5	11
2.4.4	Slot 6	12
2.4.5	Slot 7	13
2.5	FID Slots	14
2.5.1	Slot 0	14
2.5.2	Slot 1	15
2.5.3	Slot 2	16
A	Summary	17
A.1	Status	17
A.2	Comments	17

1 Front

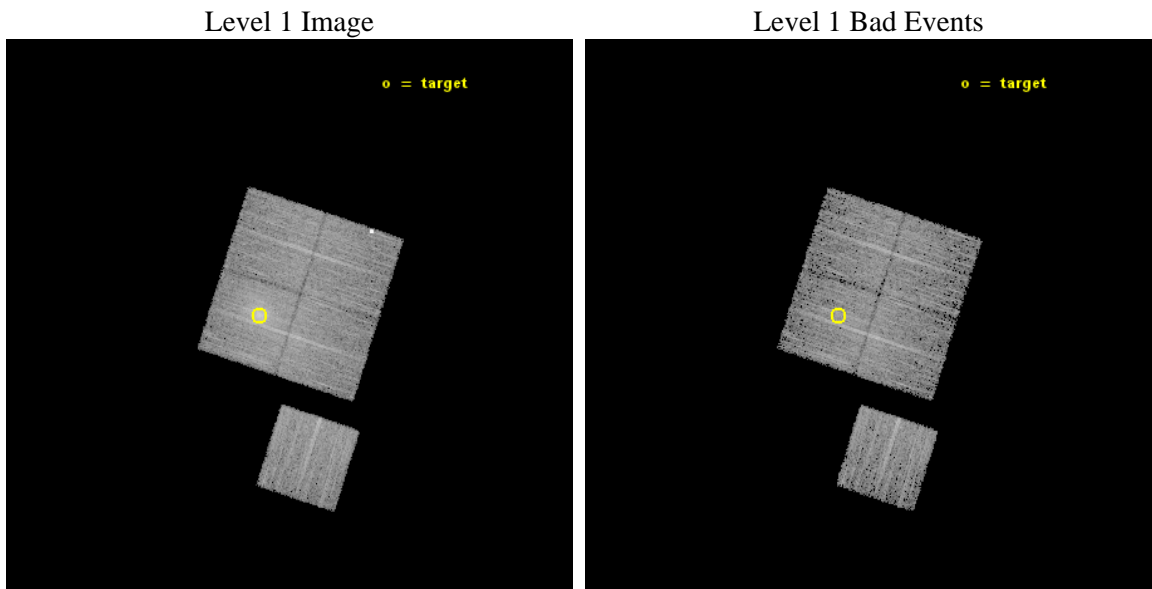
seq_num	801334	Sequence number
obs_id	15301	Observation id
title	Characterizing the Most Massive Clusters in the z	Proposal title
observer	Dr Stephen Murray	Principal investigator
object	G263.66-22.53	Source name
dtcycle	0	
cycle	P	events from which exps? Prim/Second/Both
ra_targ	101.37125	Observer's specified target RA [deg]
dec_targ	-54.229111	Observer's specified target Dec [deg]
ra_nom	101.28182063092	Nominal RA [deg]
dec_nom	-54.244123745136	Nominal Dec [deg]
roll_nom	198.06882328386	Nominal Roll [deg]
revision	2	Processing version of data
ontime	10087.400077581	Sum of GTIs [s]
livetime	9955.6007693319	Livetime [s]
ontime0	10087.400077581	Sum of GTIs [s]
ontime1	10087.400077581	Sum of GTIs [s]
ontime2	10084.259067237	Sum of GTIs [s]
ontime3	10087.400077581	Sum of GTIs [s]
ontime6	10087.400077581	Sum of GTIs [s]
l2events	38285	Number of level 2 events



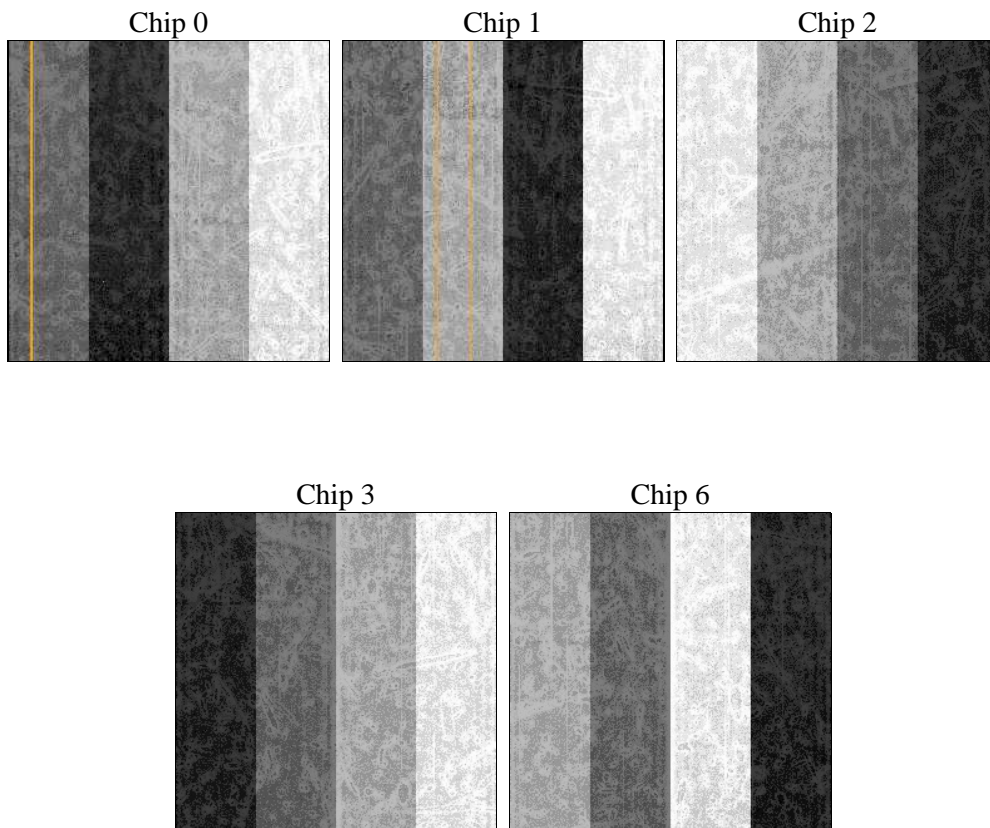
2 OBI

2.1 OBI

2.1.1 Images



2.1.2 Bias



2.1.3 Parameters

obi_num	0	Obi number	sched_exp_time	10000.506000	[s] Scheduled observation exposure time
ascdsver	10.3	Processing system revision	ontime	10087.400077581	Sum of GTIs [s]
caldsver	4.6.4	 	ontime0	10087.400077581	Sum of GTIs [s]
date	2014-12-03T16:47:05	Date and time of file creation	ontime1	10087.400077581	Sum of GTIs [s]
revision	2	Processing version of data	ontime2	10084.259067237	Sum of GTIs [s]
			ontime3	10087.400077581	Sum of GTIs [s]
			ontime6	10087.400077581	Sum of GTIs [s]
			l1events	251863	Number of level 1 events

2.1.4 Events

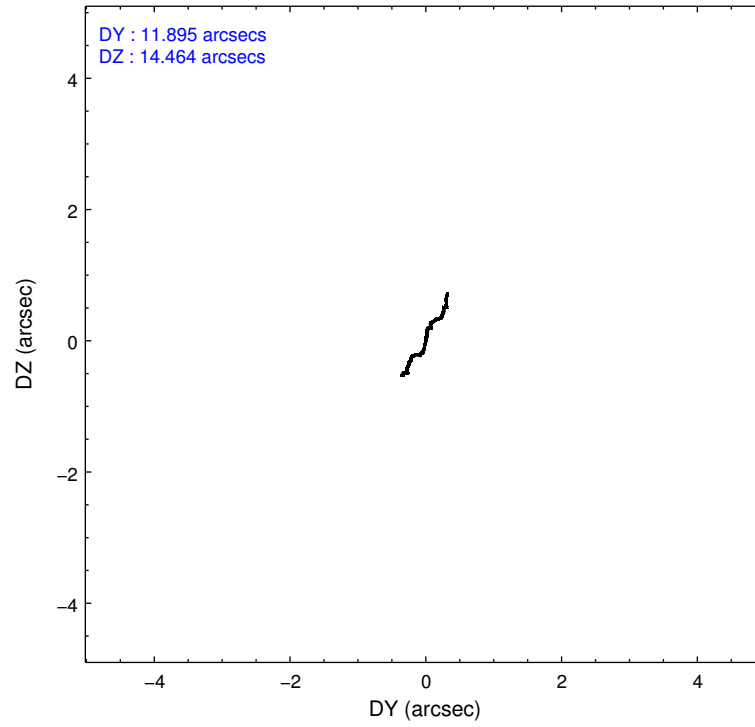
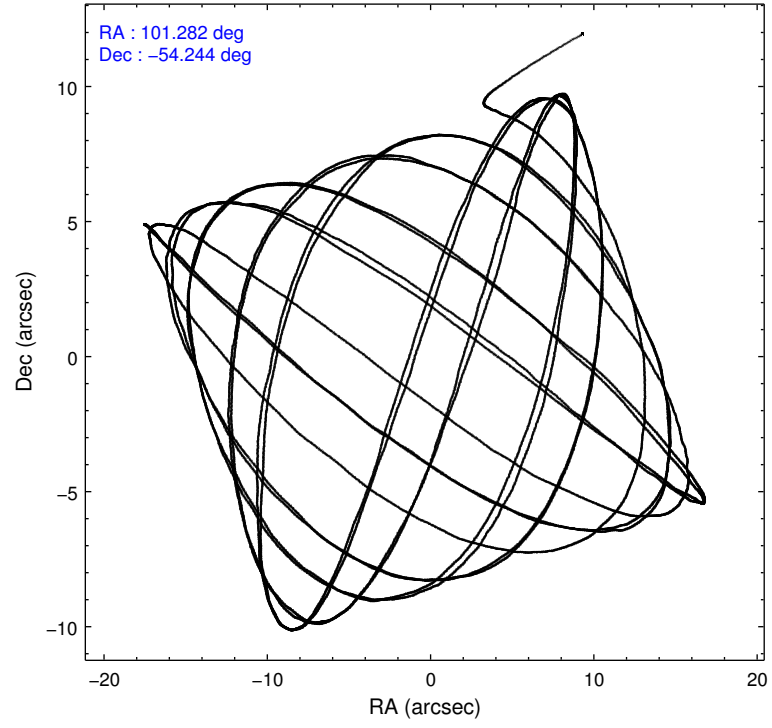
	ccd 0	ccd 1	ccd 2	ccd 3	ccd 6
level 1 events	46537	47137	47737	61817	48635
rejected events	37778	40146	41665	43128	42878
rejected %	81%	85%	87%	69%	88%

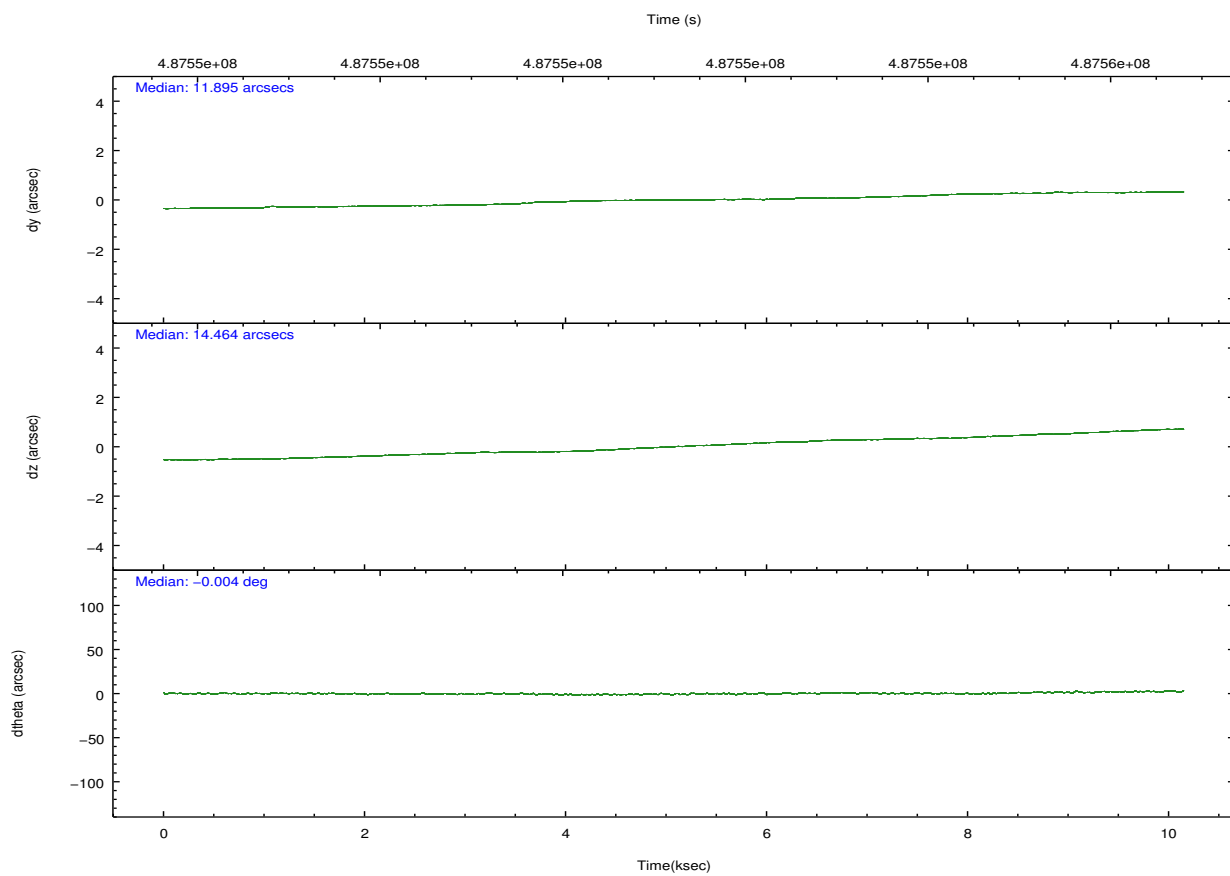
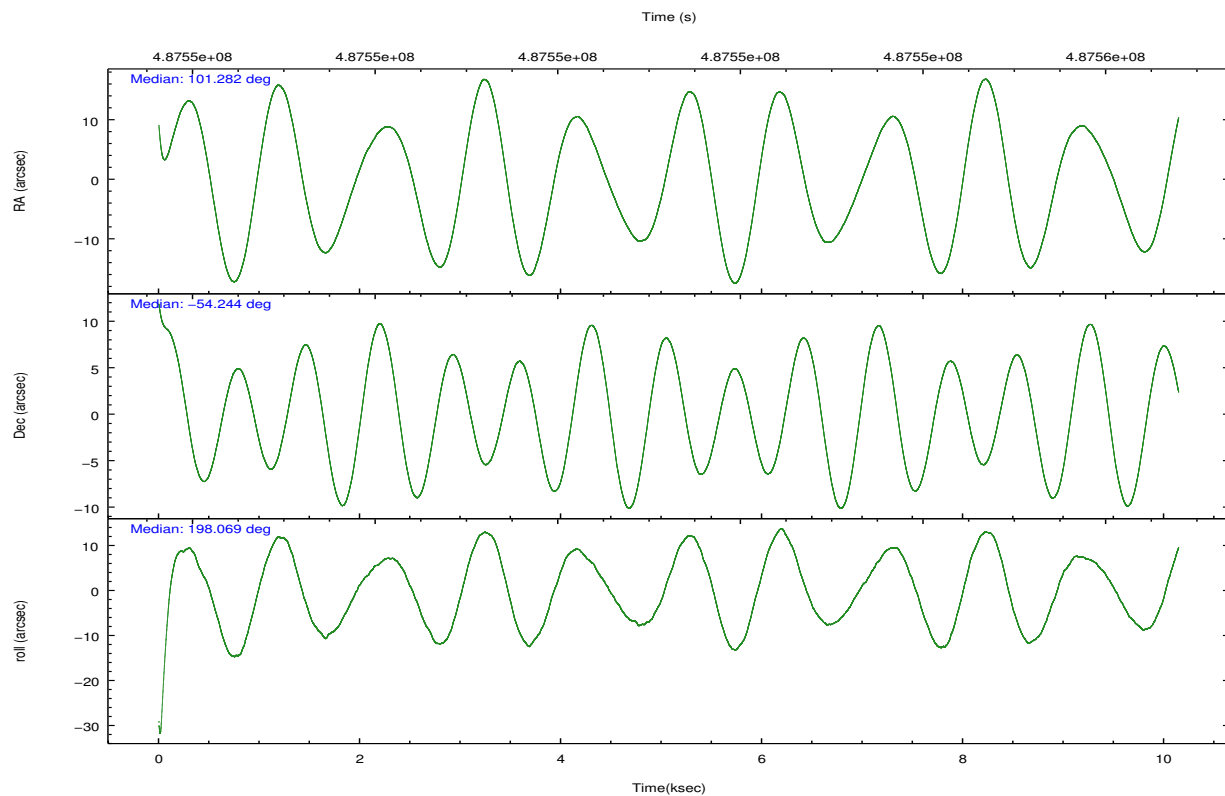
	ccd 0	ccd 1	ccd 2	ccd 3	ccd 6
grade 0 events	5040	2597	2404	12524	1975
	10%	5%	5%	20%	4%
grade 1 events	28	34	25	71	23
	0%	0%	0%	0%	0%
grade 2 events	1352	1648	1420	2634	1300
	2%	3%	2%	4%	2%
grade 3 events	615	630	601	1041	571
	1%	1%	1%	1%	1%
grade 4 events	582	649	583	1051	551
	1%	1%	1%	1%	1%
grade 5 events	2265	2423	2147	2693	2615
	4%	5%	4%	4%	5%
grade 6 events	1171	1472	1066	1445	1367
	2%	3%	2%	2%	2%
grade 7 events	35484	37684	39491	40358	40233
	76%	79%	82%	65%	82%

2.2 Compared Parameters

Parameter	Planned	Actual	Parameter	Planned	Actual
Instrument	ACIS	ACIS	Obspar format version number	7	7
Detector	ACIS-01236	ACIS-01236	Obspar file type	PREDICTED	ACTUAL
Grating	NONE	NONE	Obspar update status	NONE	UPDATED
Data mode	VFAINT	VFAINT	CCD I0 on	Y	Y
Observation mode	POINTING	POINTING	CCD I1 on	Y	Y
[deg] Pointing RA	101.313096	101.2818206309235	CCD I2 on	Y	Y
[deg] Pointing Dec	-54.223630	-54.24412374513584	CCD I3 on	Y	Y
[deg] Pointing Roll	197.885573	198.06882328386	CCD S0 on	N	N
[mm] SIM focus pos	-0.782348	-0.7809083437167272	CCD S1 on	N	N
[mm] SIM defocus	0	0.001439871863259334	CCD S2 on	O1	Y
[mm] SIM translation stage pos	-225.840463	-225.8433433320239	CCD S3 on	N	N
[mm] SIM translation stage offset	-7.752	-7.749109670905796	CCD S4 on	N	N
[s] Observation start time (MET)	487546294.184000	487545161.8948	CCD S5 on	N	N
Observation start date	2013-06-13T21:30:27	2013-06-13T21:12:41	Number of optional ACIS chips dropped	0	0
[s] Observation end time (MET)	487556295.184000	487556529.65792	On-chip summing requested	N	N
Observation end date	2013-06-14T00:17:08	2013-06-14T00:22:09	Subarray requested	NONE	NONE
Read mode	TIMED	TIMED	Alternating exposures requested	N	N
			[s] Primary exposure time	0.000000	3.1

2.3 Aspect



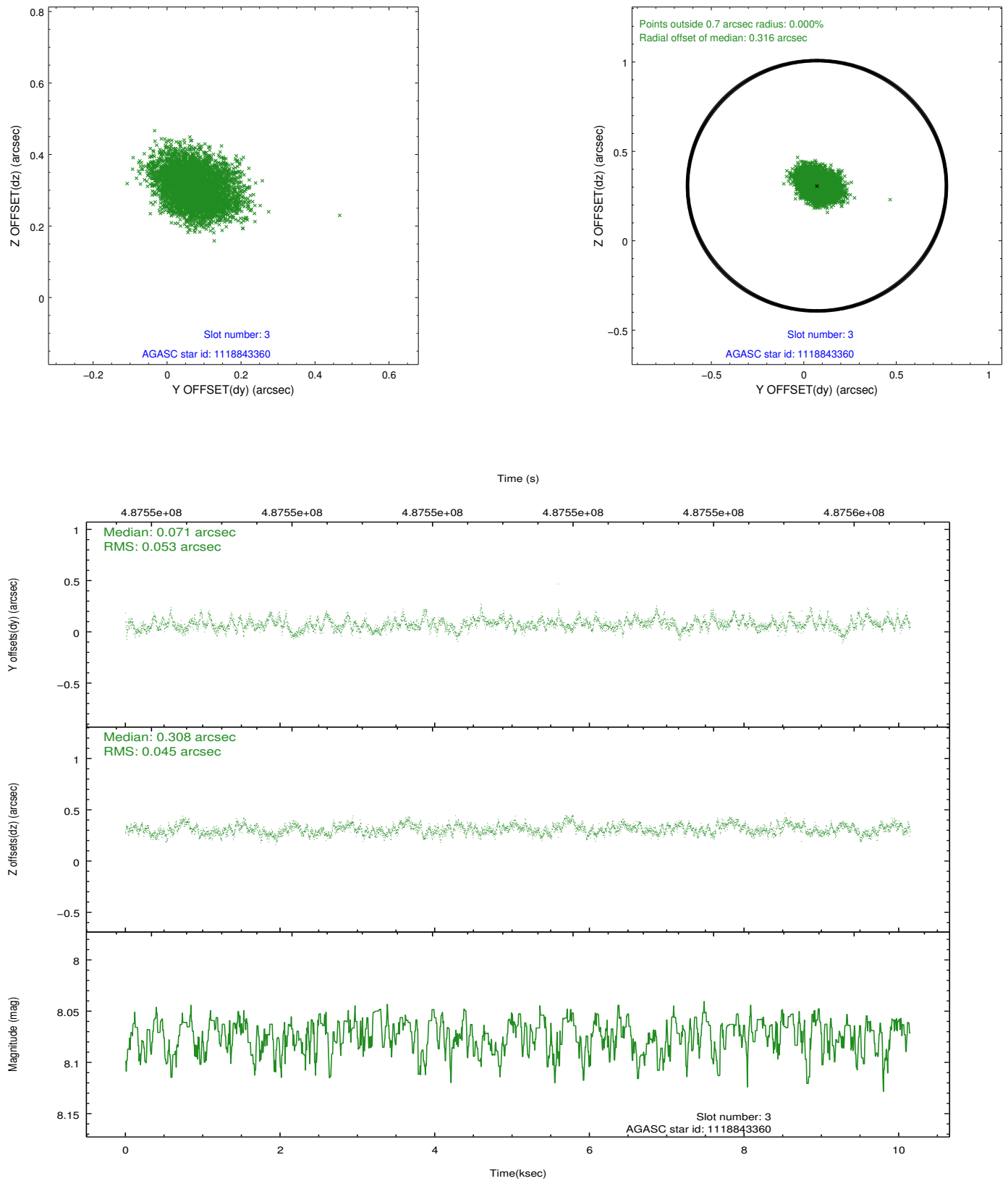


Slot Statistics

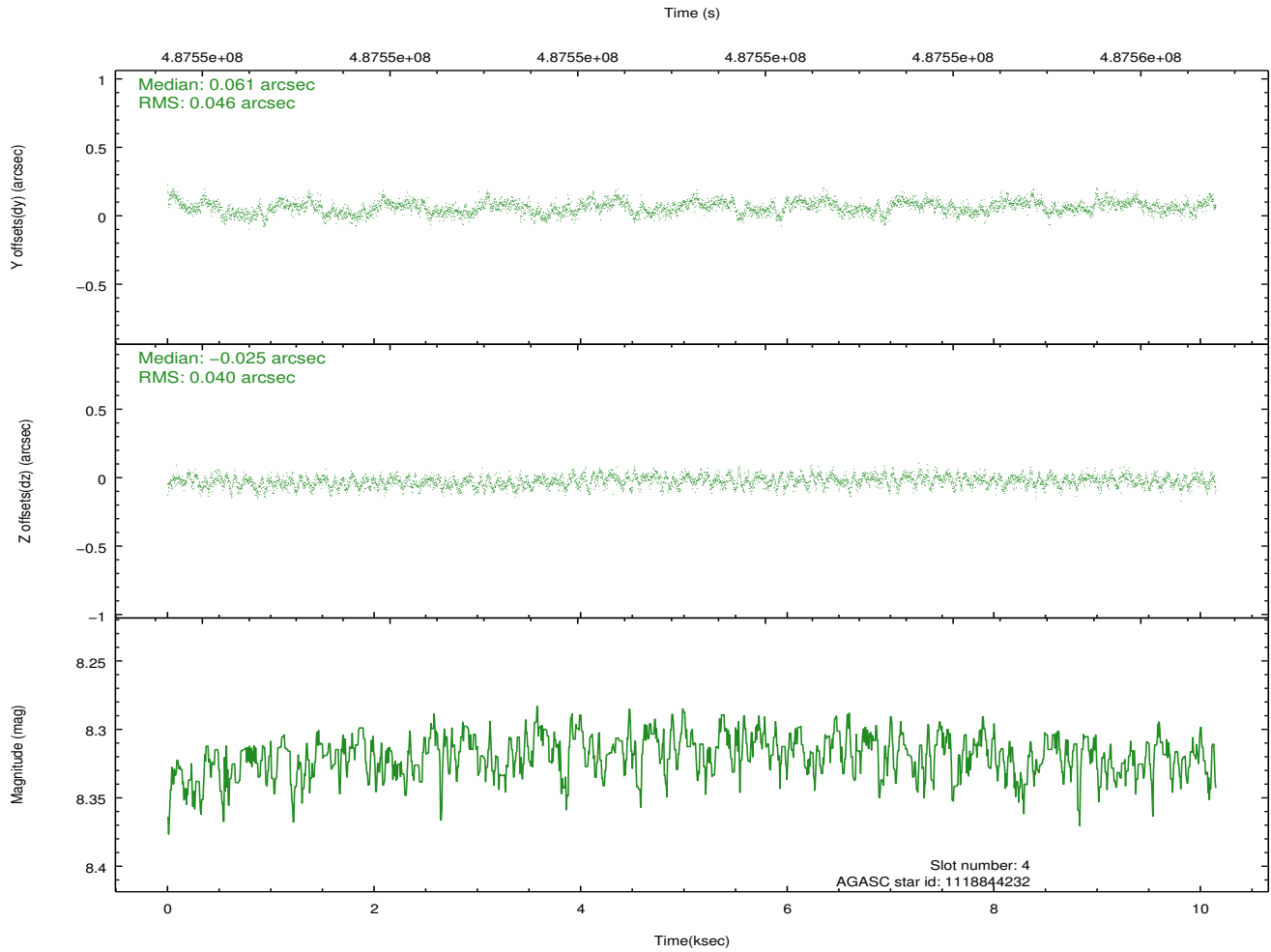
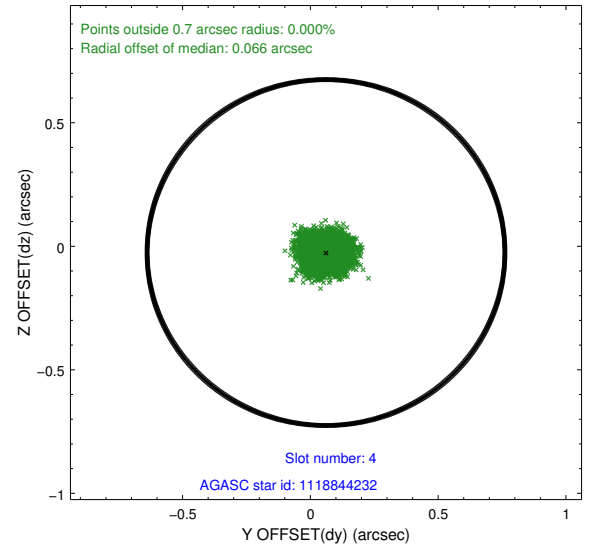
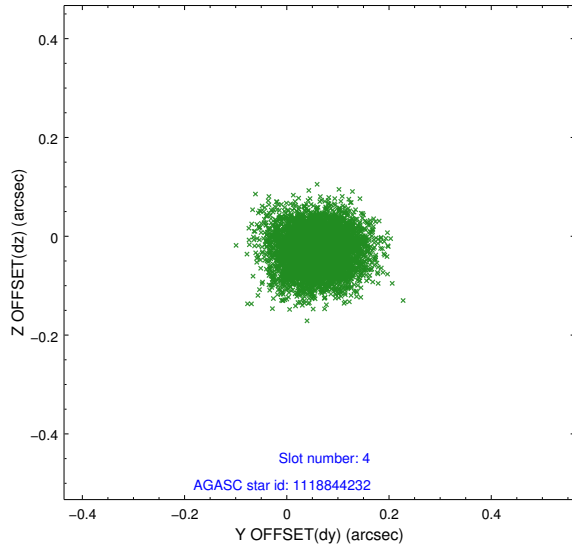
slot	status	used	id	mag	n_pts	med_dy	med_dz	dr1	dr2	ra	dec	mean_y	mean_z
0	FID		ACIS-I-1	7.14	2475	0.106	-0.085	0.012	0.024	0.000000	0.000000	927.66	-997.21
1	FID		ACIS-I-5	7.11	2475	-0.243	0.093	0.009	0.016	0.000000	0.000000	-1820.57	900.04
2	FID		ACIS-I-6	7.14	2475	0.045	0.064	0.011	0.019	0.000000	0.000000	392.49	1545.19
3	GUIDE	used	1118843360	8.07	4951	0.071	0.308	0.074	0.123	102.160794	-54.014205	-1934.90	-156.34
4	GUIDE	used	1118844232	8.32	4950	0.061	-0.025	0.066	0.104	102.107113	-53.893574	-1965.34	-604.32
5	GUIDE	used	1118845464	9.16	4949	-0.009	-0.237	0.093	0.146	102.030287	-54.192635	-1469.83	364.88
6	GUIDE	used	1119359080	7.17	4950	-0.070	-0.050	0.084	0.128	101.040822	-54.730727	1099.37	1564.59
7	GUIDE	used	1119360528	7.00	4950	-0.053	-0.002	0.086	0.133	101.053302	-54.695504	1036.78	1451.99

2.4 Star Slots

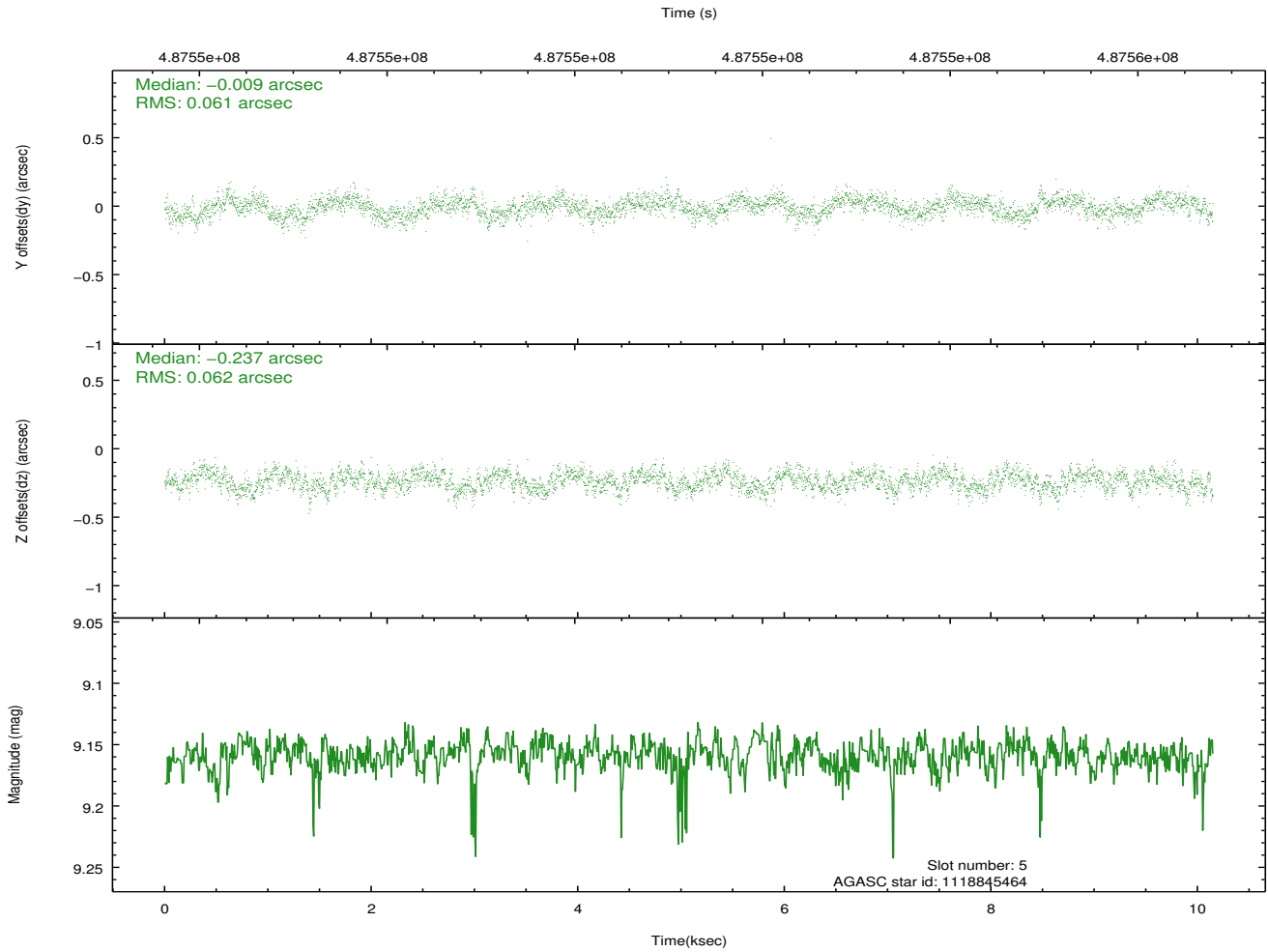
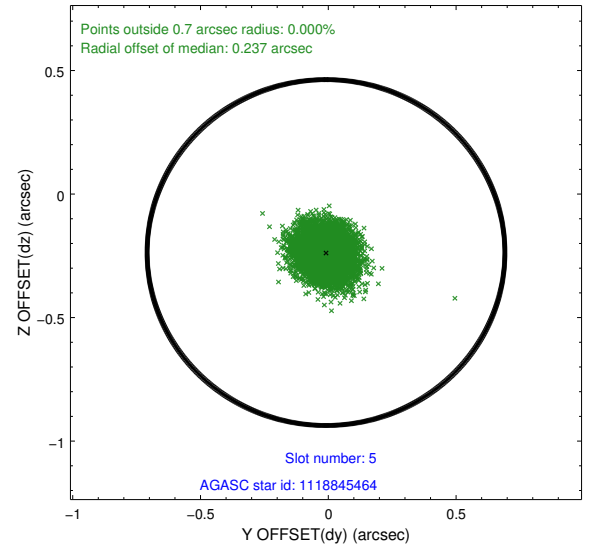
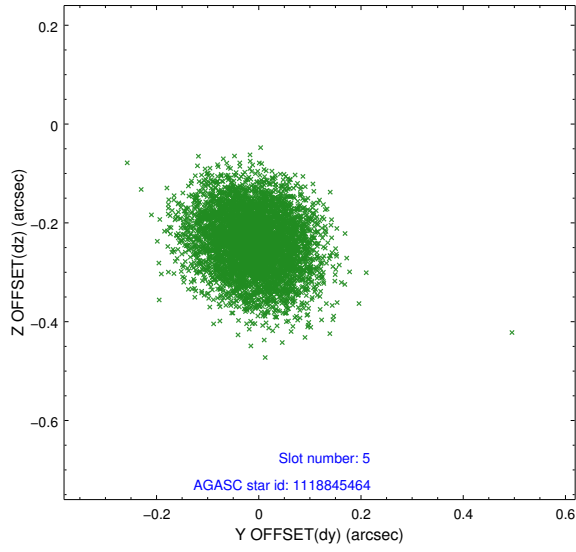
2.4.1 Slot 3



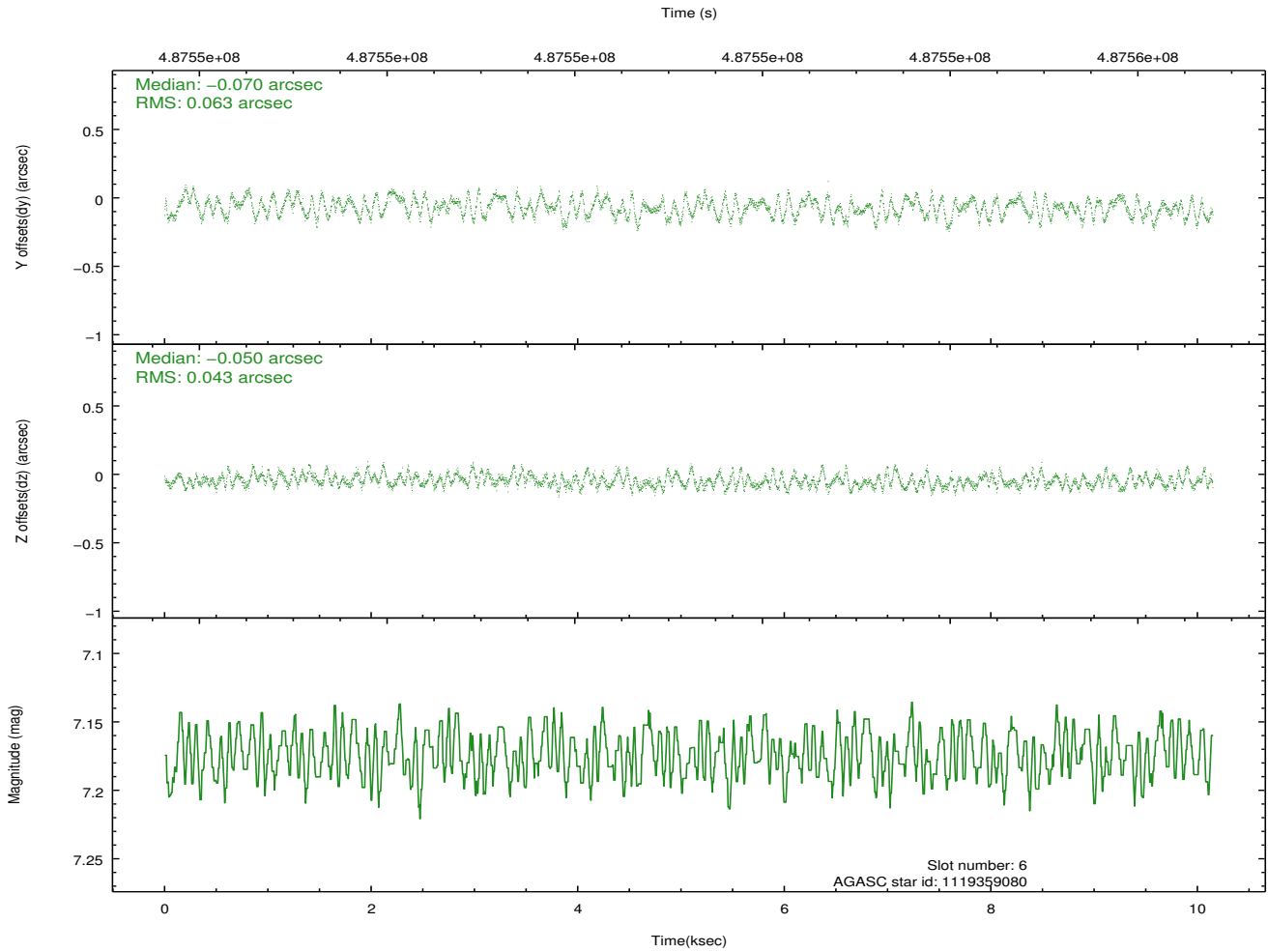
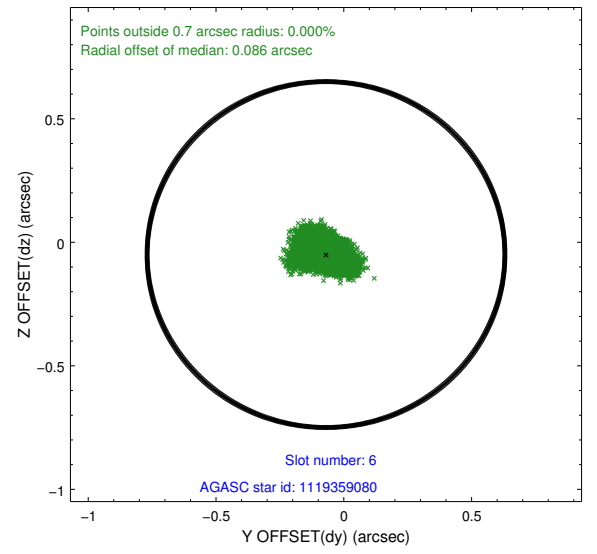
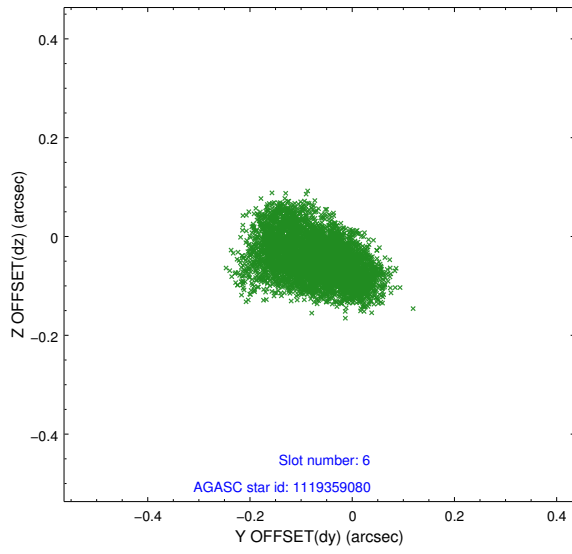
2.4.2 Slot 4



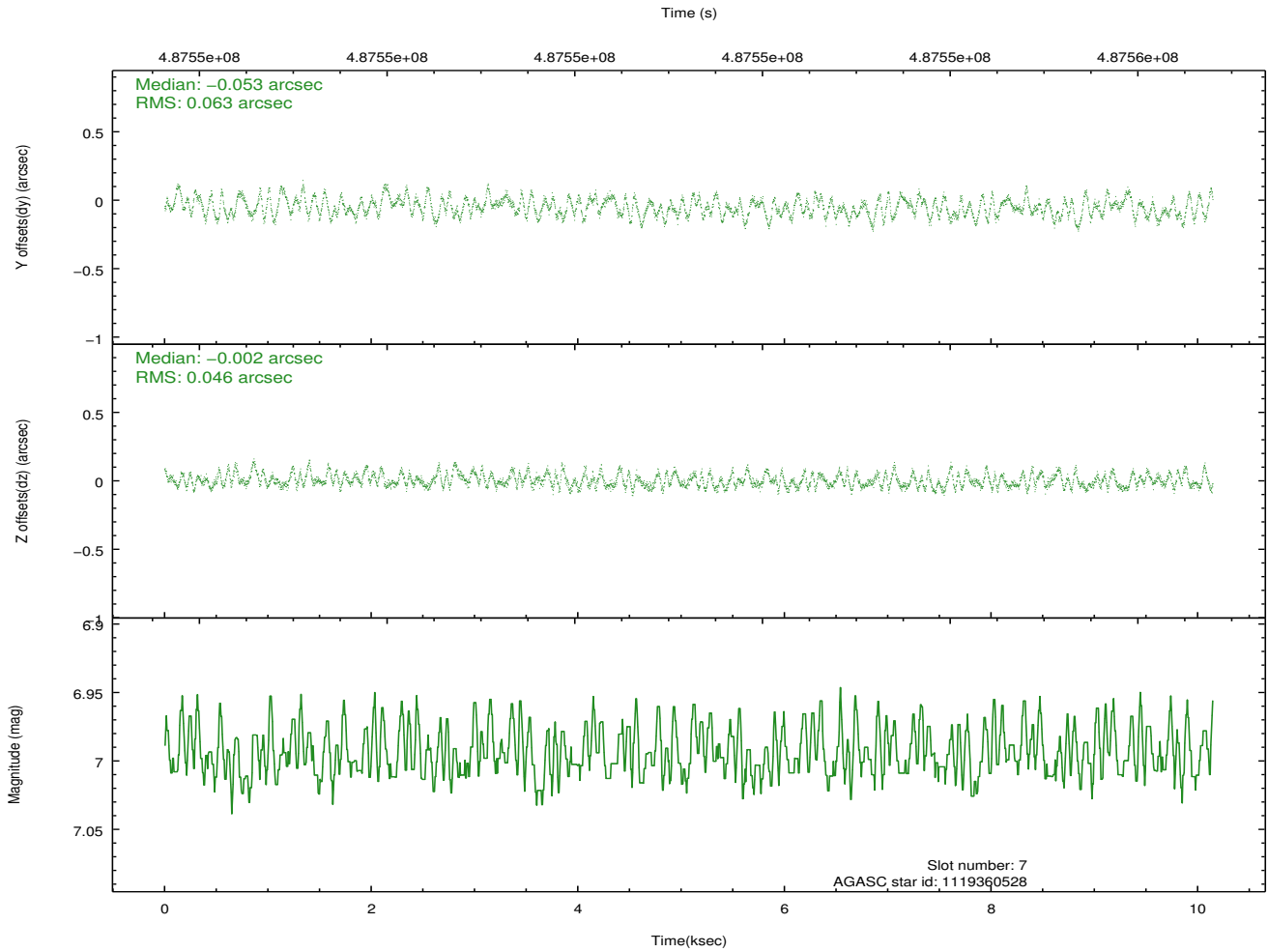
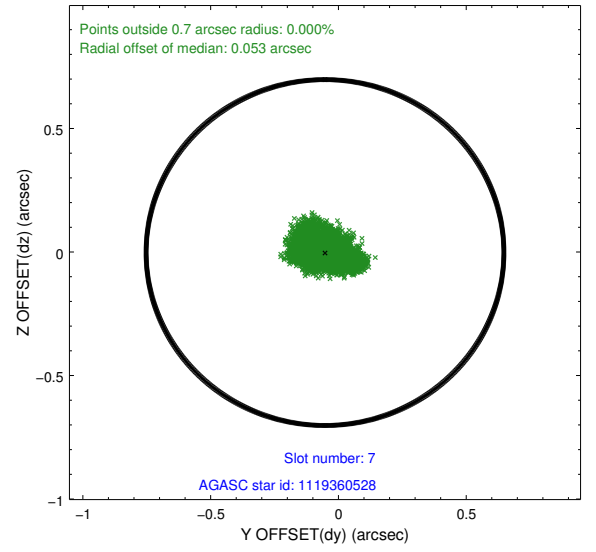
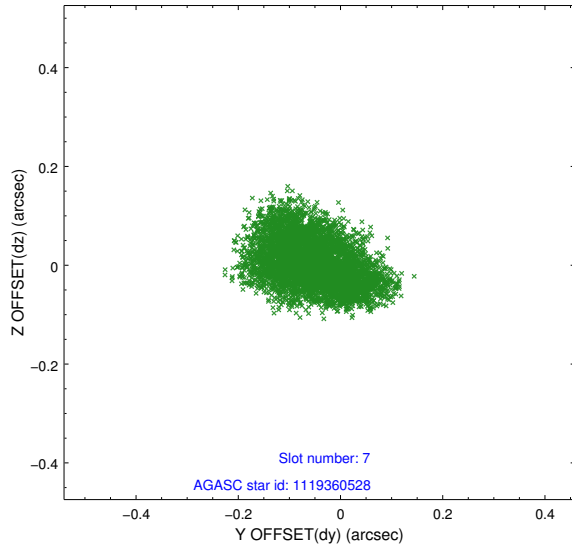
2.4.3 Slot 5



2.4.4 Slot 6

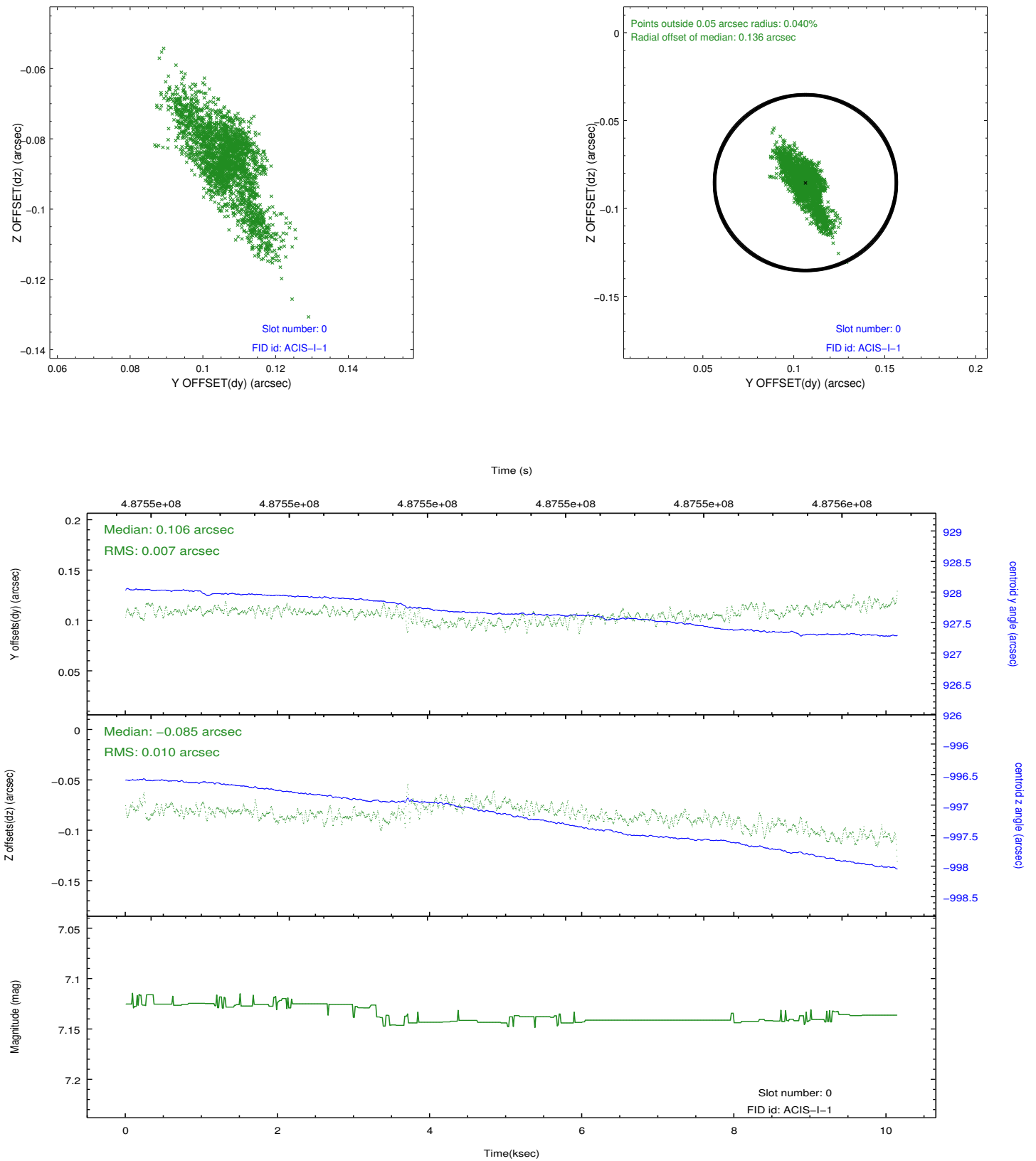


2.4.5 Slot 7

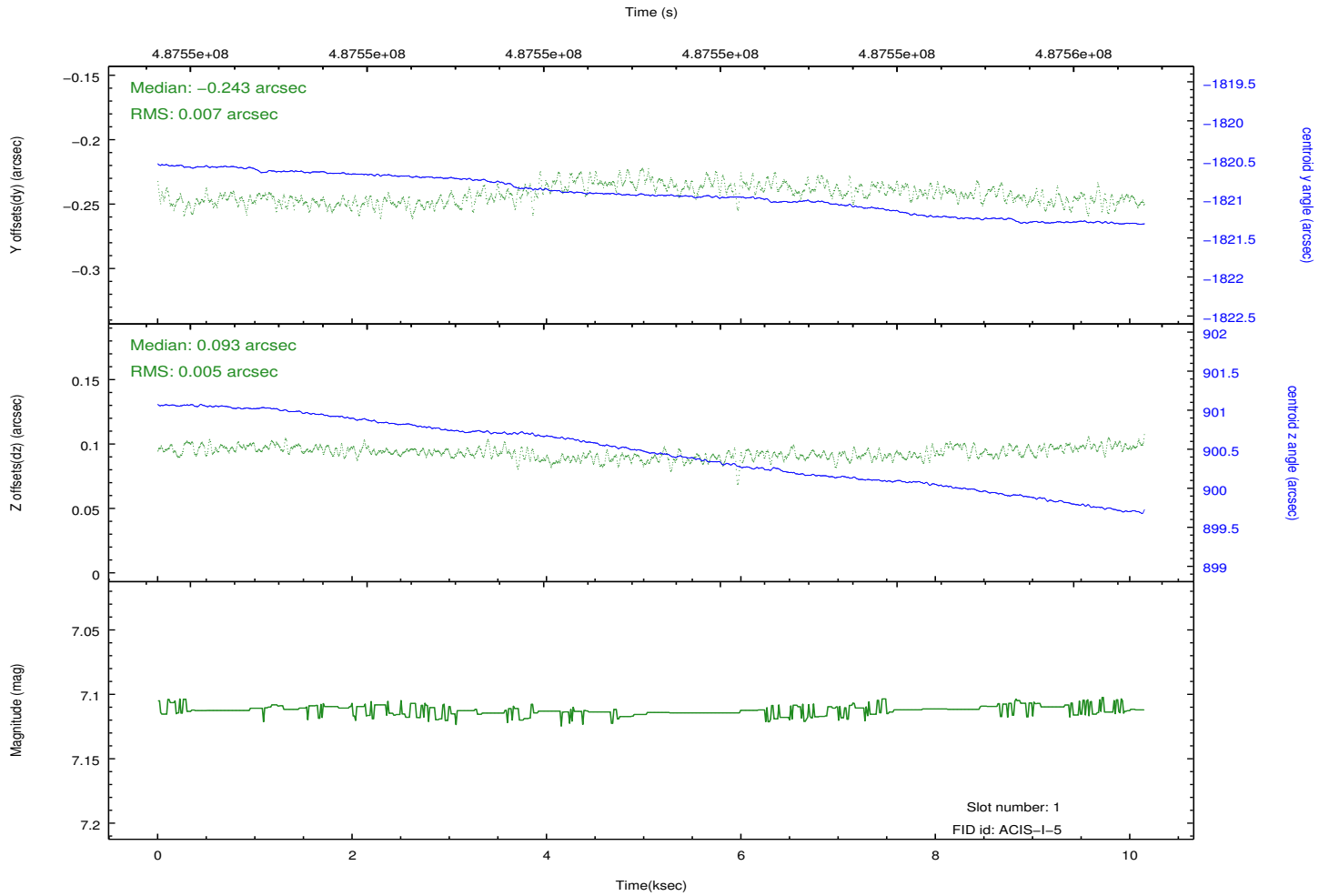
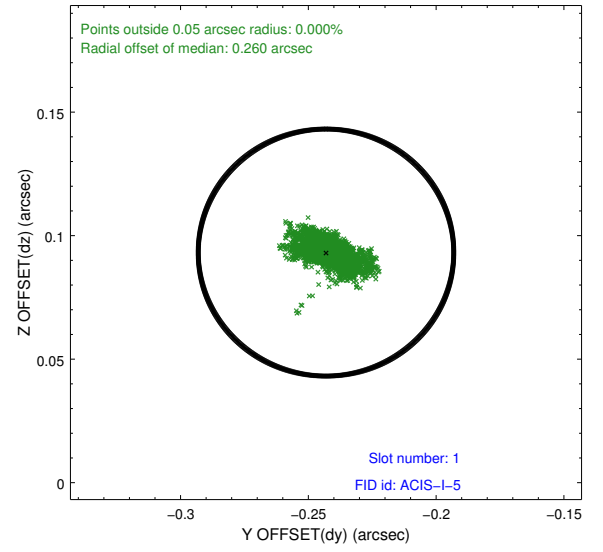
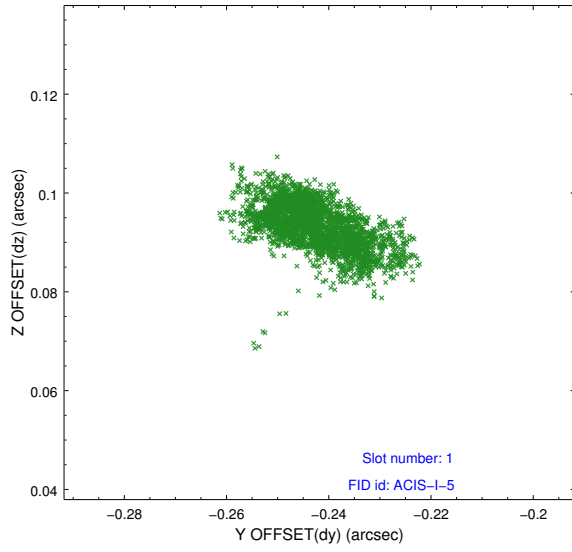


2.5 FID Slots

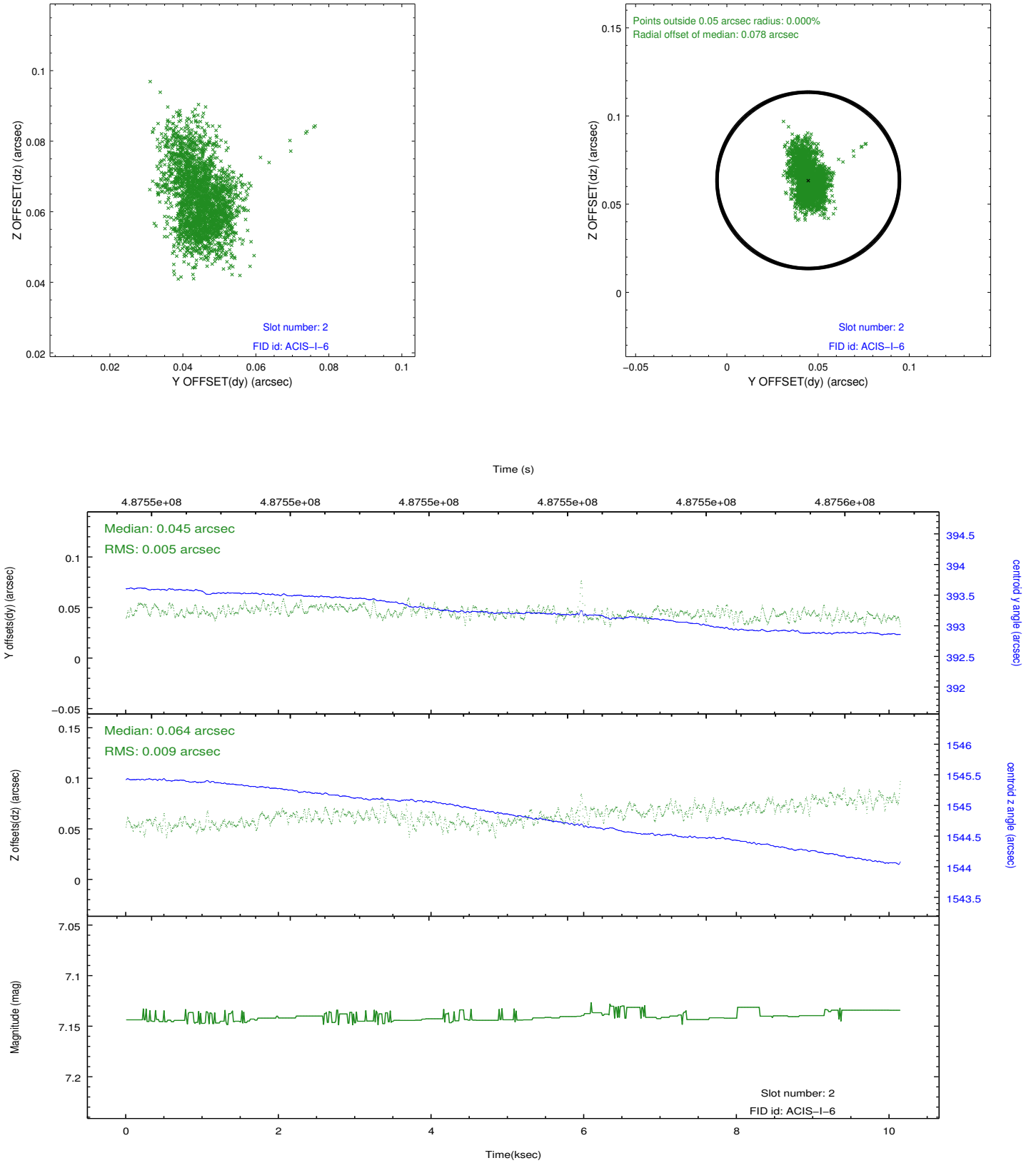
2.5.1 Slot 0



2.5.2 Slot 1



2.5.3 Slot 2



A Summary

A.1 Status

V&V Scientist	Jen Lauer
V&V Date (YYYY-MM-DD)	2014.12.11
V&V Edition	1
V&V Disposition and Status	OK
V&V Charge Time	10.087400077581

A.2 Comments

These data have been reprocessed with new aspect alignment calibration files that correct small mean offsets (up to 0.4 arcsecs) and improve overall astrometric accuracy. The new calibration was determined using data from the time period being reprocessed and was performed using cross-correlation of X-ray sources with radio and optical counterparts.