

V&V Reference Report

L2 ASCDS Version : 10

Observation 15073 - L2 Version 2
Chandra X-Ray Center

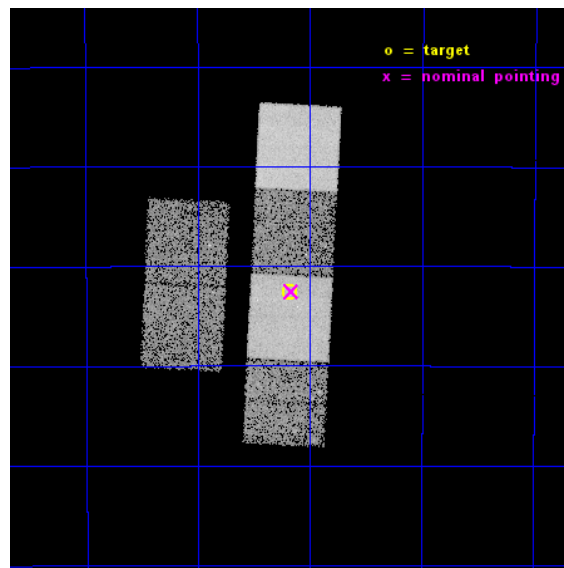
L2 Processing Date : Dec 3 2014

Contents

1	Front	2
2	OBI	3
2.1	OBI	3
2.1.1	Images	3
2.1.2	Bias	3
2.1.3	Parameters	4
2.1.4	Events	4
2.2	Compared Parameters	5
2.3	Aspect	6
2.4	Star Slots	9
2.4.1	Slot 3	9
2.4.2	Slot 4	10
2.4.3	Slot 5	11
2.4.4	Slot 6	12
2.4.5	Slot 7	13
2.5	FID Slots	14
2.5.1	Slot 0	14
2.5.2	Slot 1	15
2.5.3	Slot 2	16
A	Summary	17
A.1	Status	17
A.2	Comments	17

1 Front

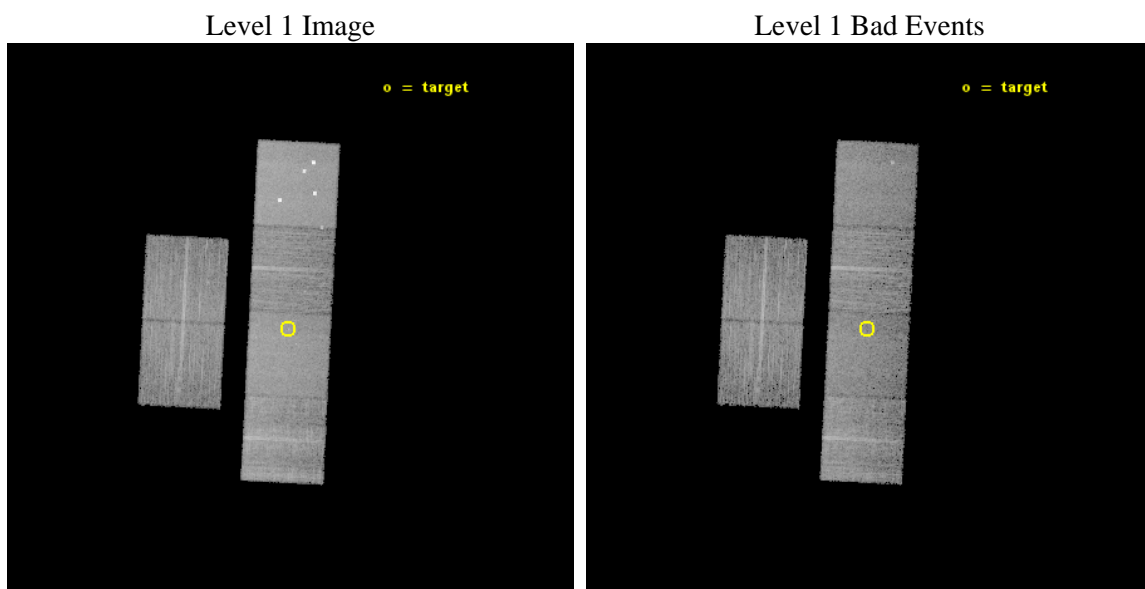
seq_num	702880	Sequence number
obs_id	15073	Observation id
title	C-GOALS: The Chandra-RBGS Survey of a Complete Sample of Major-Merger LIRGs	Proposal title
observer	Professor David Sanders	Principal investigator
object	ESO 343-IG013	Source name
dtcycle	0	
cycle	P	events from which exps? Prim/Second/Both
ra_targ	324.045	Observer's specified target RA [deg]
dec_targ	-38.543889	Observer's specified target Dec [deg]
ra_nom	324.04163314164	Nominal RA [deg]
dec_nom	-38.542364176532	Nominal Dec [deg]
roll_nom	92.964877452341	Nominal Roll [deg]
revision	2	Processing version of data
ontime	14965.327389002	Sum of GTIs [s]
livetime	14775.827402564	Livetime [s]
ontime2	14962.127378643	Sum of GTIs [s]
ontime3	14961.963218629	Sum of GTIs [s]
ontime5	14965.286348999	Sum of GTIs [s]
ontime6	14965.245308995	Sum of GTIs [s]
ontime7	14965.327389002	Sum of GTIs [s]
ontime8	14965.163228989	Sum of GTIs [s]
l2events	125461	Number of level 2 events



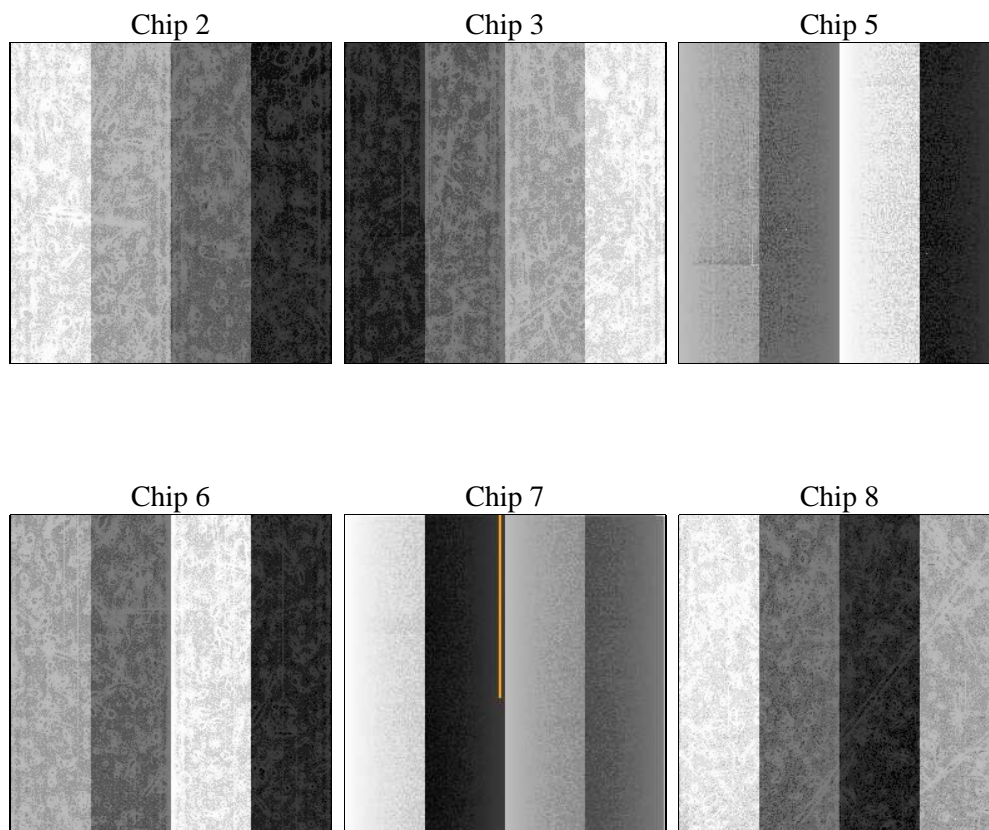
2 OBI

2.1 OBI

2.1.1 Images



2.1.2 Bias



2.1.3 Parameters

obi_num	0	Obi number	sched_exp_time	15000.000000	[s] Scheduled observation exposure time
ascdsver	10.3	Processing system revision	ontime	14965.327389002	Sum of GTIs [s]
caldbver	4.6.4	 	ontime2	14962.127378643	Sum of GTIs [s]
date	2014-12-03T16:40:29	Date and time of file creation	ontime3	14961.963218629	Sum of GTIs [s]
revision	2	Processing version of data	ontime5	14965.286348999	Sum of GTIs [s]
			ontime6	14965.245308995	Sum of GTIs [s]
			ontime7	14965.327389002	Sum of GTIs [s]
			ontime8	14965.163228989	Sum of GTIs [s]
			l1events	538456	Number of level 1 events

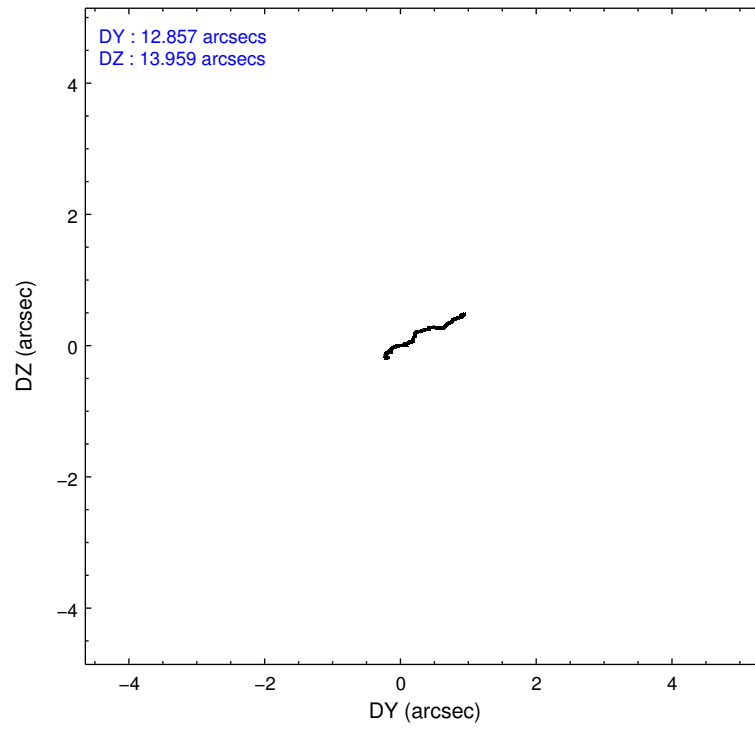
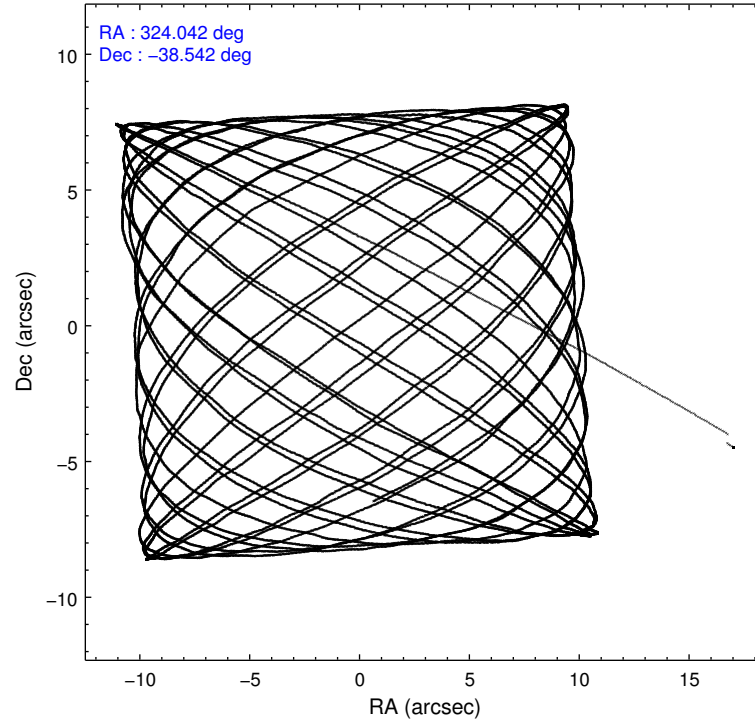
2.1.4 Events

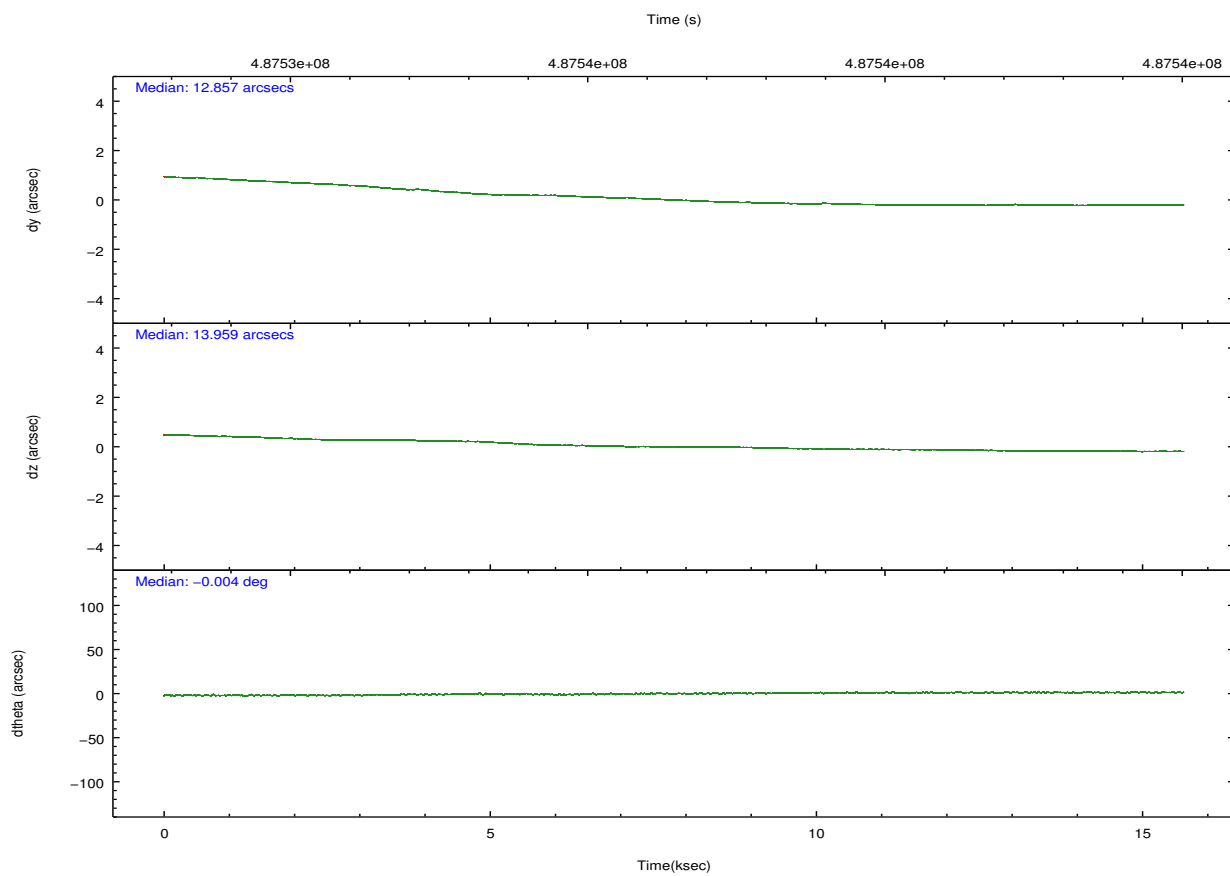
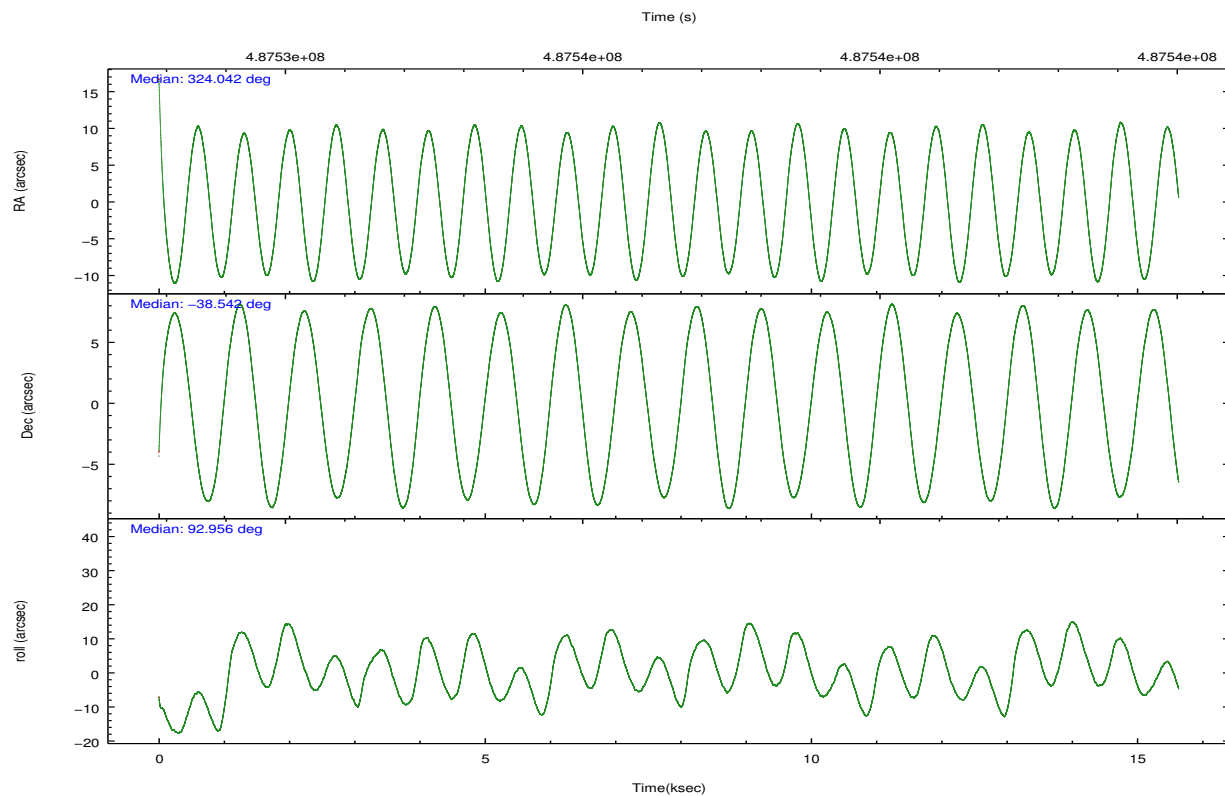
	ccd 2	ccd 3	ccd 5	ccd 6	ccd 7	ccd 8		ccd 2	ccd 3	ccd 5	ccd 6	ccd 7	ccd 8
level 1 events	72582	67656	133434	72578	98313	93893	grade 0 events	3033	2697	16554	3021	3785	6948
rejected events	64235	59875	62663	63970	55686	69456		4%	3%	12%	4%	3%	7%
rejected %	88%	88%	46%	88%	56%	73%	grade 1 events	35	39	528	27	110	55
								0%	0%	0%	0%	0%	0%
							grade 2 events	2116	1731	19231	1907	8671	5912
								2%	2%	14%	2%	8%	6%
							grade 3 events	780	824	1925	888	3656	2518
								1%	1%	1%	1%	3%	2%
							grade 4 events	846	849	1680	864	3549	2428
								1%	1%	1%	1%	3%	2%
							grade 5 events	3135	3826	8584	3790	10190	5409
								4%	5%	6%	5%	10%	5%
							grade 6 events	1574	1684	31412	1932	22992	6633
								2%	2%	23%	2%	23%	7%
							grade 7 events	61063	56006	53520	60149	45360	63990
								84%	82%	40%	82%	46%	68%

2.2 Compared Parameters

Parameter	Planned	Actual	Parameter	Planned	Actual
Instrument	ACIS	ACIS	Obspar format version number	7	7
Detector	ACIS-235678	ACIS-235678	Obspar file type	PREDICTED	ACTUAL
Grating	NONE	NONE	Obspar update status	NONE	UPDATED
Data mode	VFAINT	VFAINT	CCD I0 on	N	N
Observation mode	POINTING	POINTING	CCD I1 on	N	N
[deg] Pointing RA	324.061062	324.0416331416362	CCD I2 on	O2	Y
[deg] Pointing Dec	-38.565129	-38.5423641765322	CCD I3 on	Y	Y
[deg] Pointing Roll	92.820353	92.964877452341	CCD S0 on	N	N
[mm] SIM focus pos	-0.684267	-0.6828225247311905	CCD S1 on	O1	Y
[mm] SIM defocus	0	0.001444936568705701	CCD S2 on	Y	Y
[mm] SIM translation stage pos	-190.132523	-190.1400660498719	CCD S3 on	Y	Y
[mm] SIM translation stage offset	0	0.00754346686406393	CCD S4 on	Y	Y
[s] Observation start time (MET)	487529271.184000	487528031.06887	CCD S5 on	N	N
Observation start date	2013-06-13T16:46:44	2013-06-13T16:27:11	Number of optional ACIS chips dropped	0	0
[s] Observation end time (MET)	487544271.184000	487545161.8948	On-chip summing requested	N	N
Observation end date	2013-06-13T20:56:44	2013-06-13T21:12:41	Subarray requested	NONE	NONE
Read mode	TIMED	TIMED	Alternating exposures requested	N	N
			[s] Primary exposure time	0.000000	3.2

2.3 Aspect



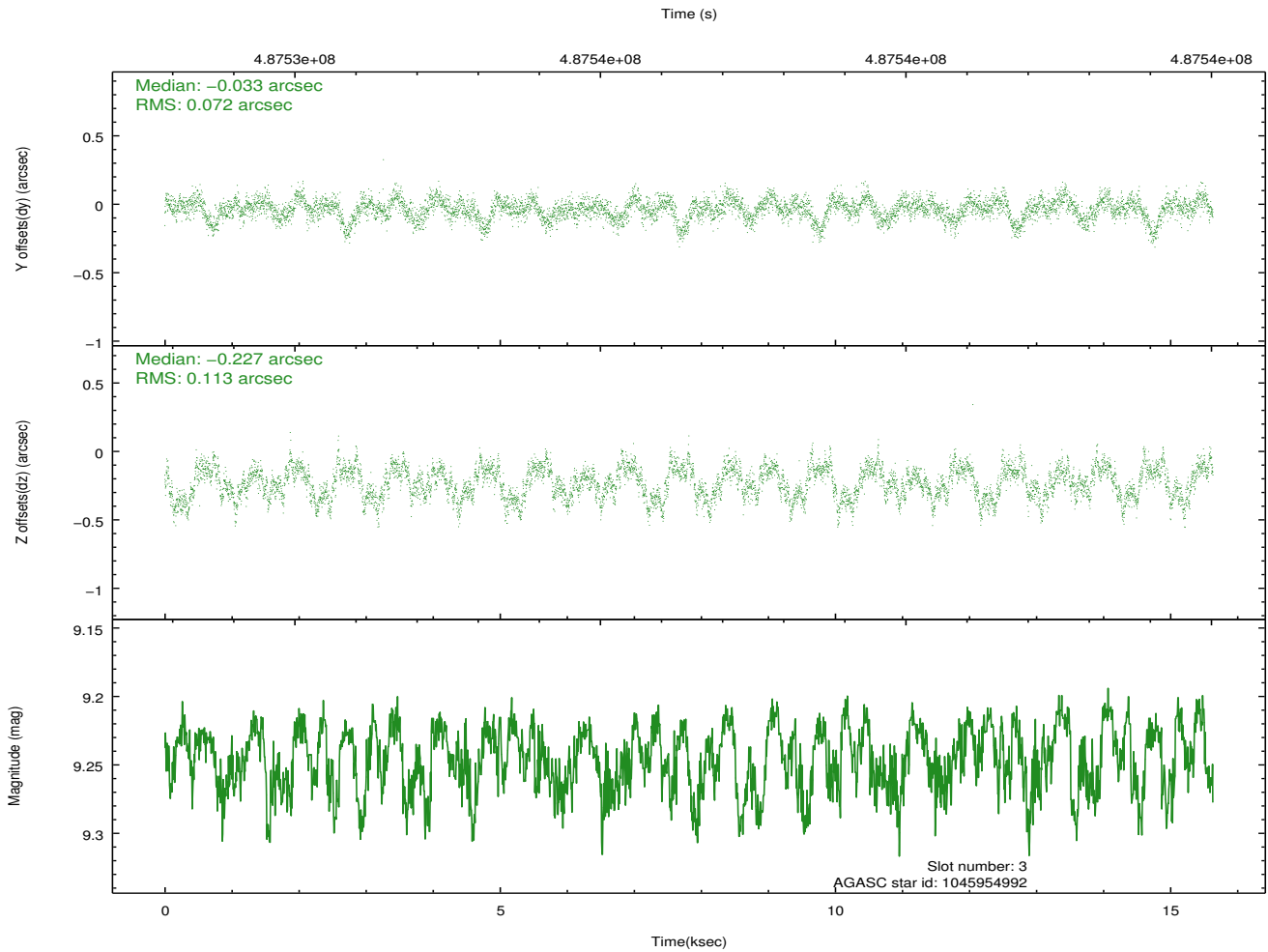
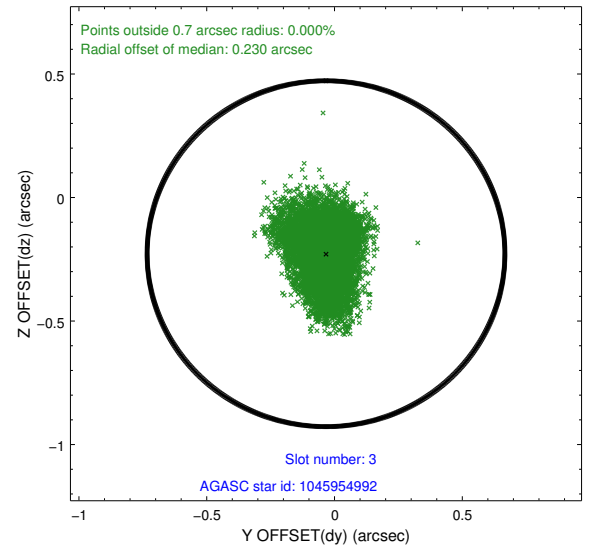
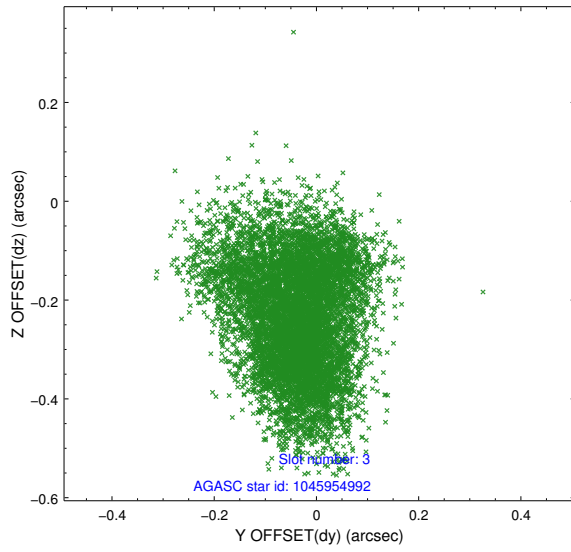


Slot Statistics

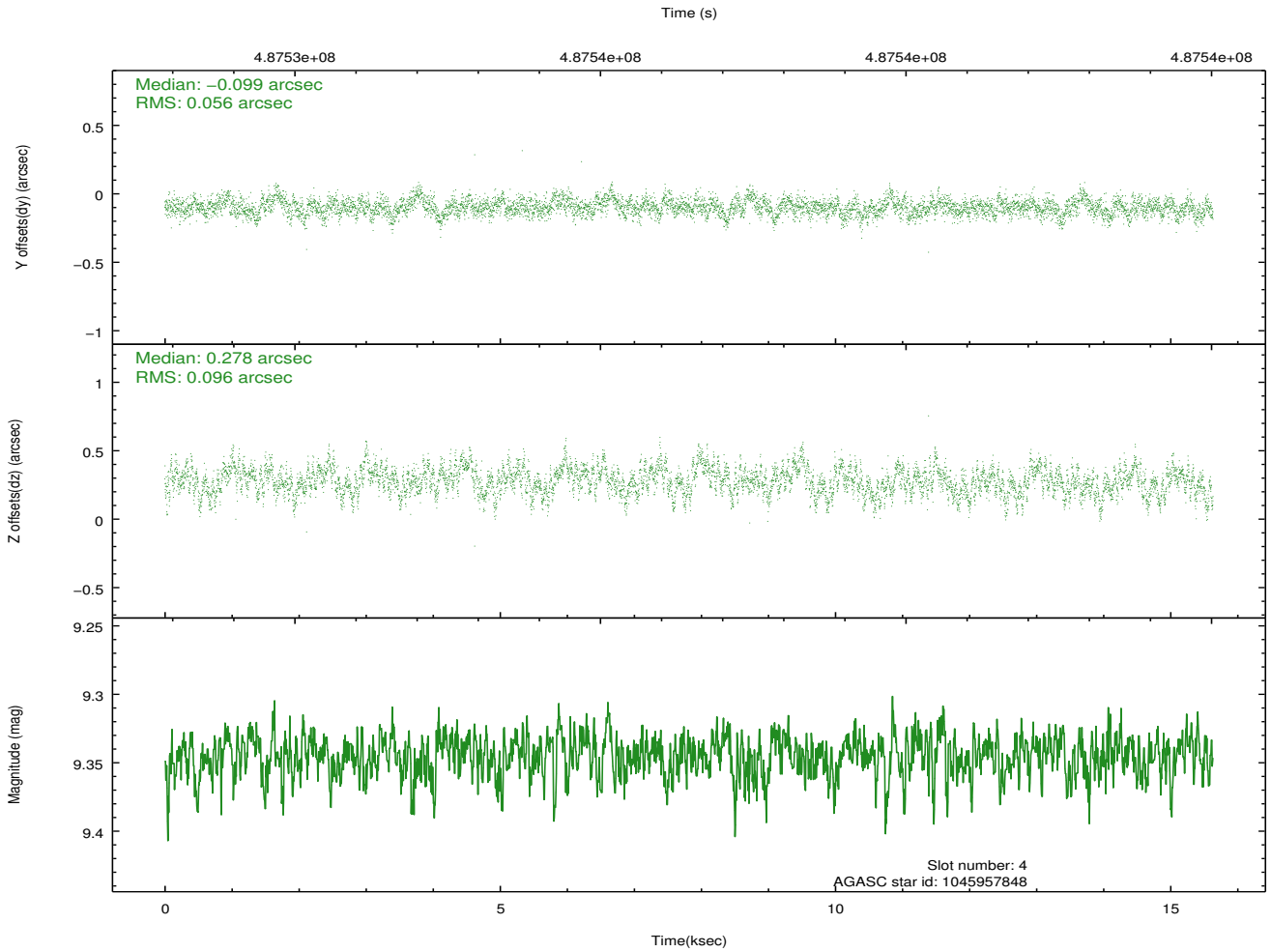
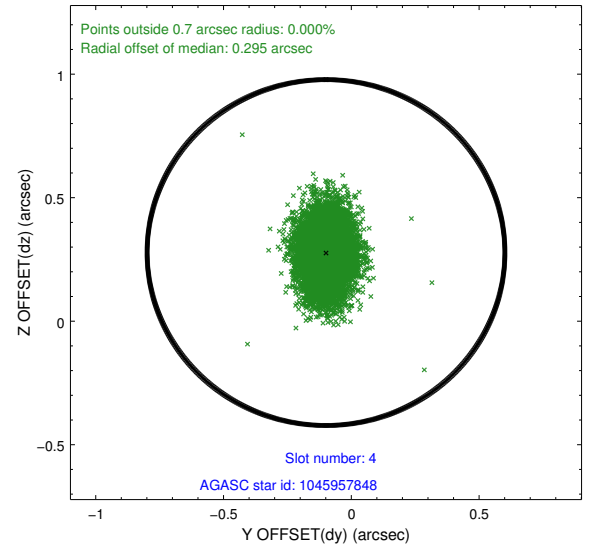
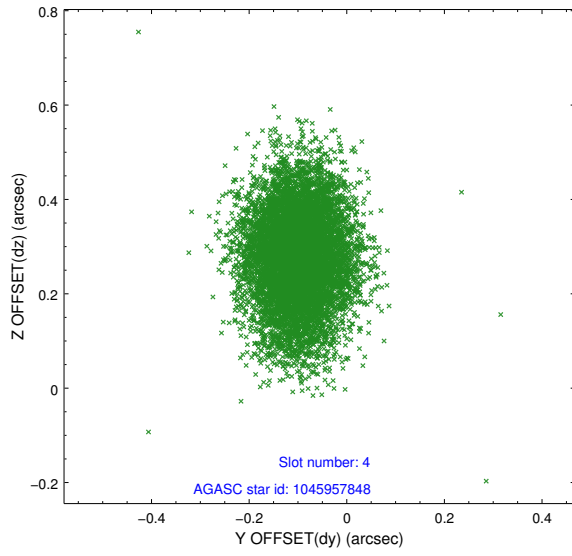
slot	status	used	id	mag	n_pts	med_dy	med_dz	dr1	dr2	ra	dec	mean_y	mean_z
0	FID		ACIS-S-2	6.99	3814	-0.049	-0.036	0.014	0.028	0.000000	0.000000	-765.95	-1735.40
1	FID		ACIS-S-4	7.08	3814	0.187	0.034	0.018	0.054	0.000000	0.000000	2147.44	172.86
2	FID		ACIS-S-5	7.11	3814	-0.171	0.008	0.015	0.026	0.000000	0.000000	-1818.56	166.82
3	GUIDE	used	1045954992	9.24	7586	-0.033	-0.227	0.145	0.231	323.932918	-38.612246	-151.97	368.60
4	GUIDE	used	1045957848	9.34	7580	-0.099	0.278	0.115	0.195	324.841748	-38.907534	-1347.88	-2122.62
5	GUIDE	used	1045958872	8.65	7622	0.049	-0.364	0.074	0.122	323.404585	-39.046577	-1648.41	1918.56
6	GUIDE	used	1045962432	9.05	7623	0.051	-0.222	0.093	0.146	323.764745	-38.794825	-787.13	872.07
7	GUIDE	used	1045962688	9.05	7619	0.036	0.546	0.099	0.159	324.115682	-38.621143	-208.99	-142.41

2.4 Star Slots

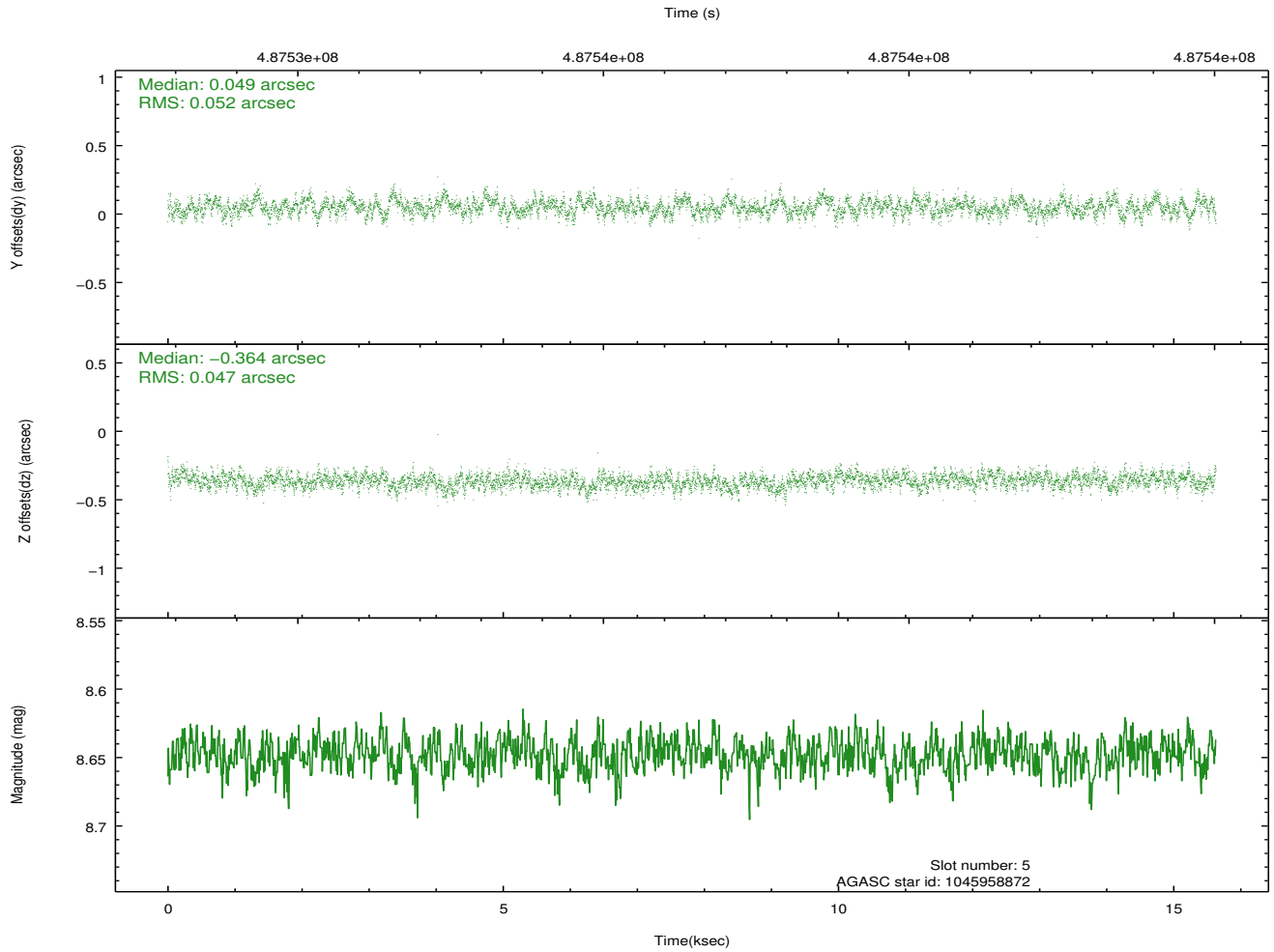
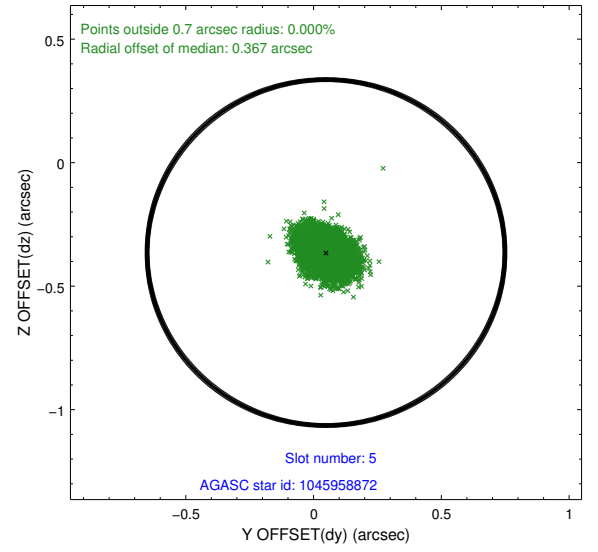
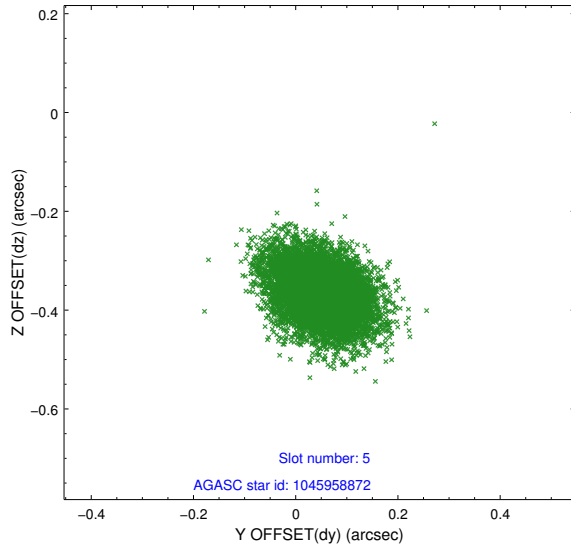
2.4.1 Slot 3



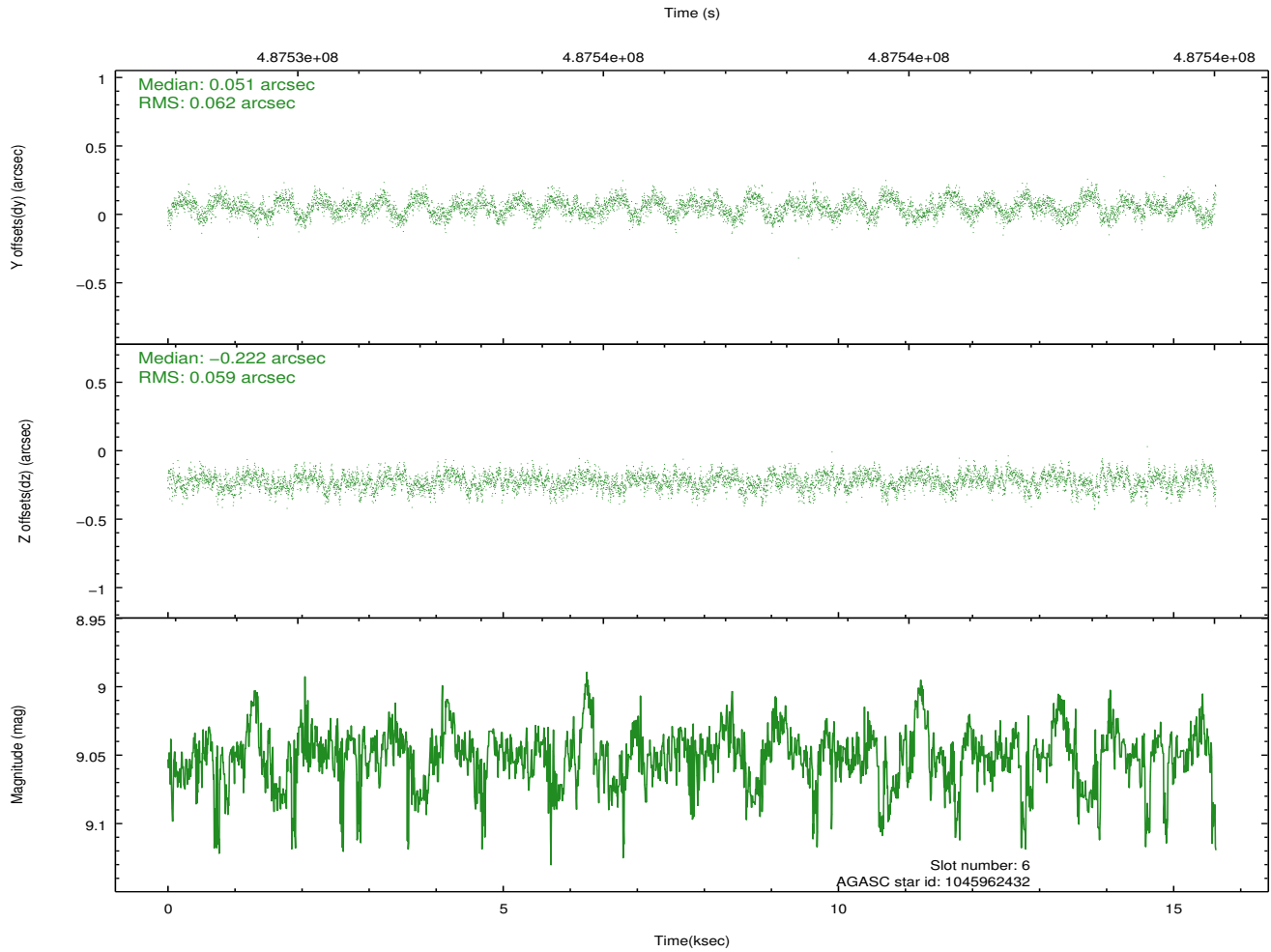
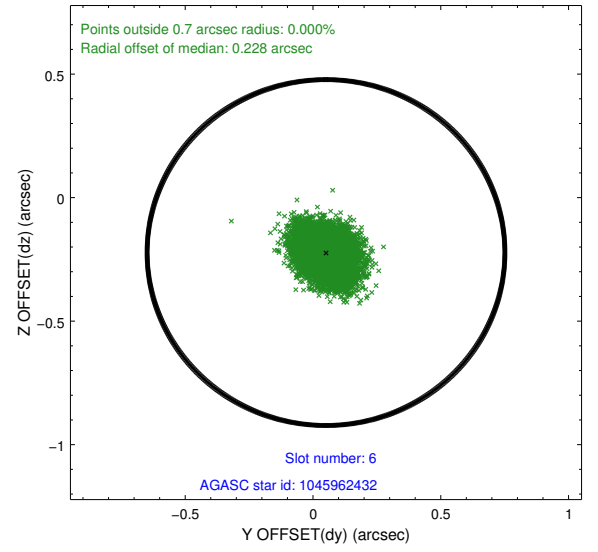
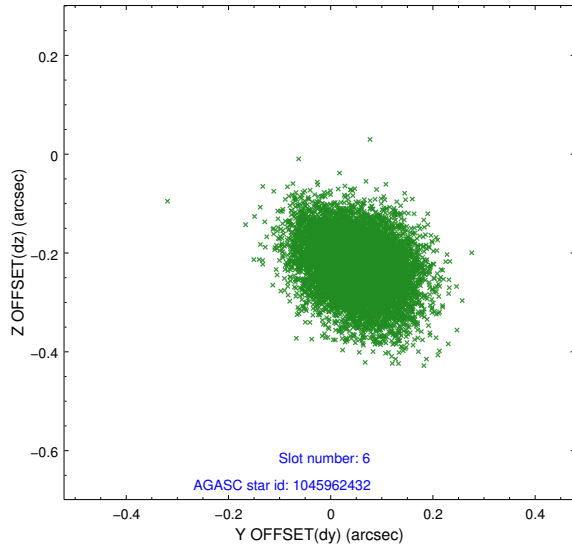
2.4.2 Slot 4



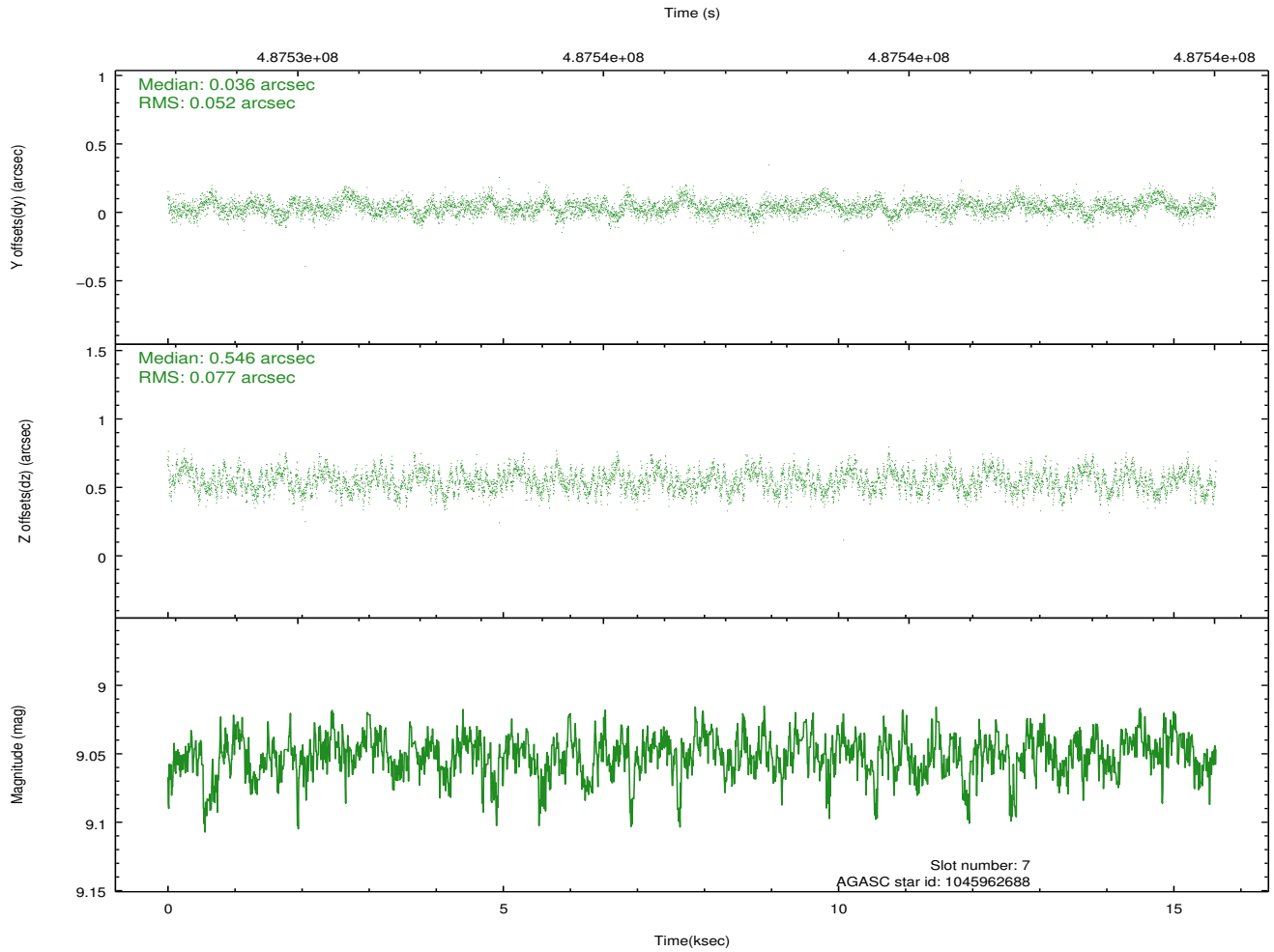
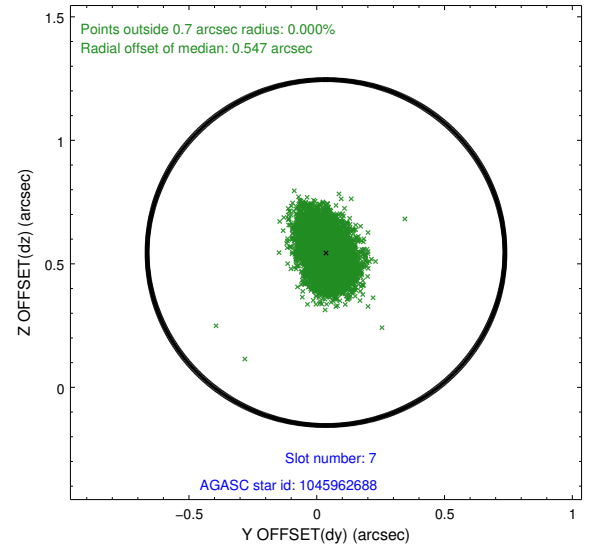
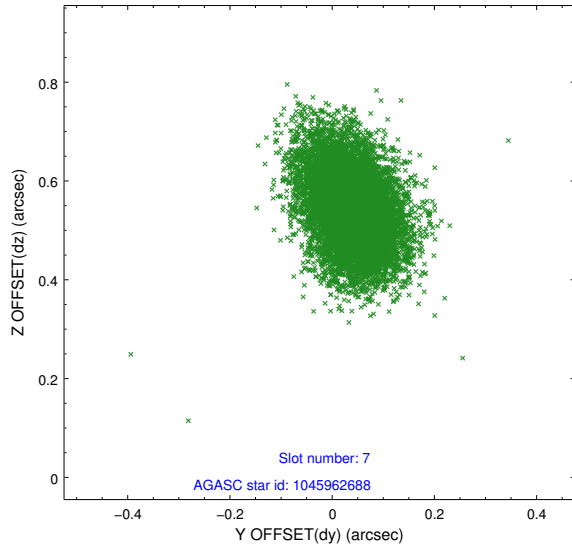
2.4.3 Slot 5



2.4.4 Slot 6

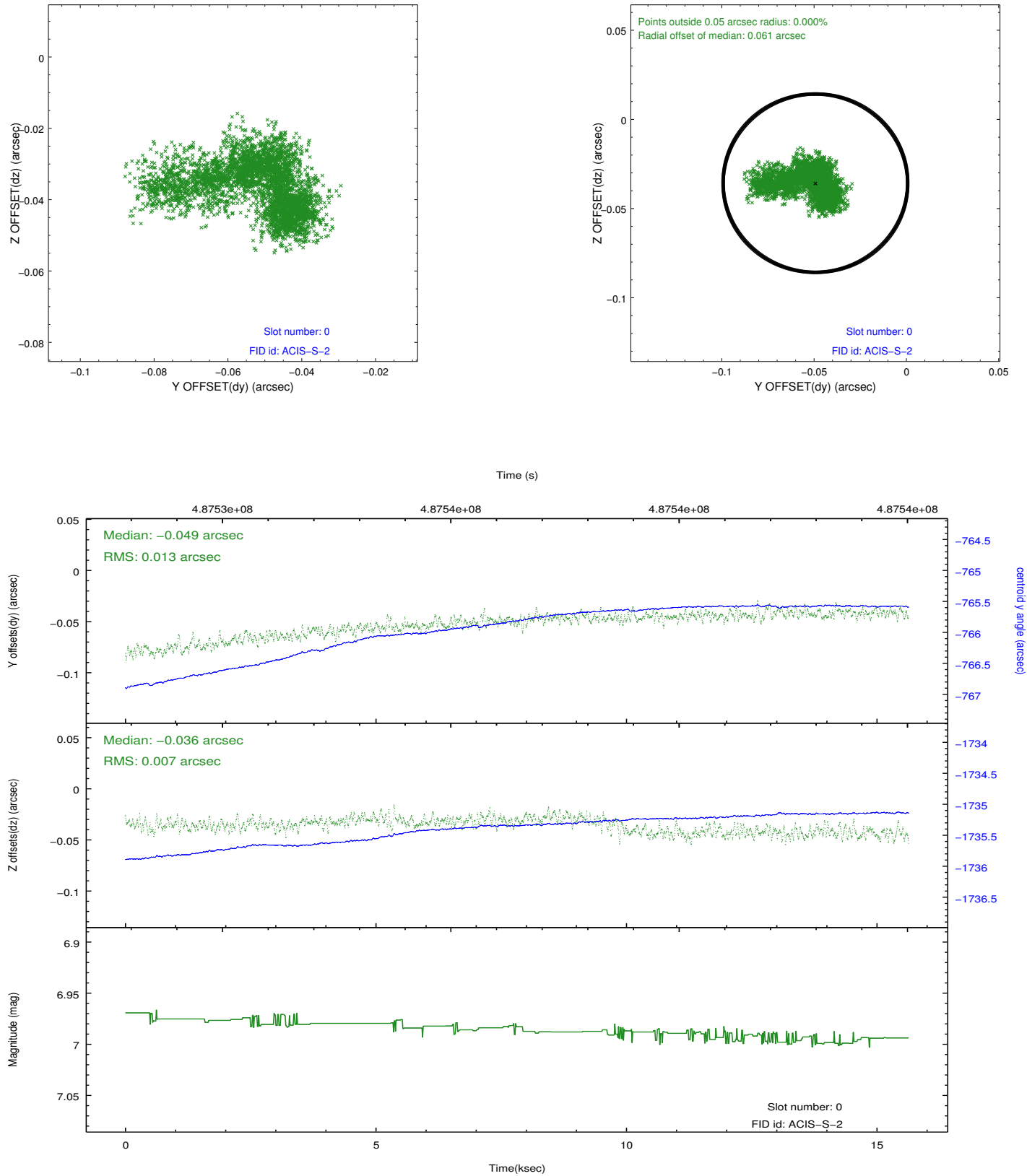


2.4.5 Slot 7

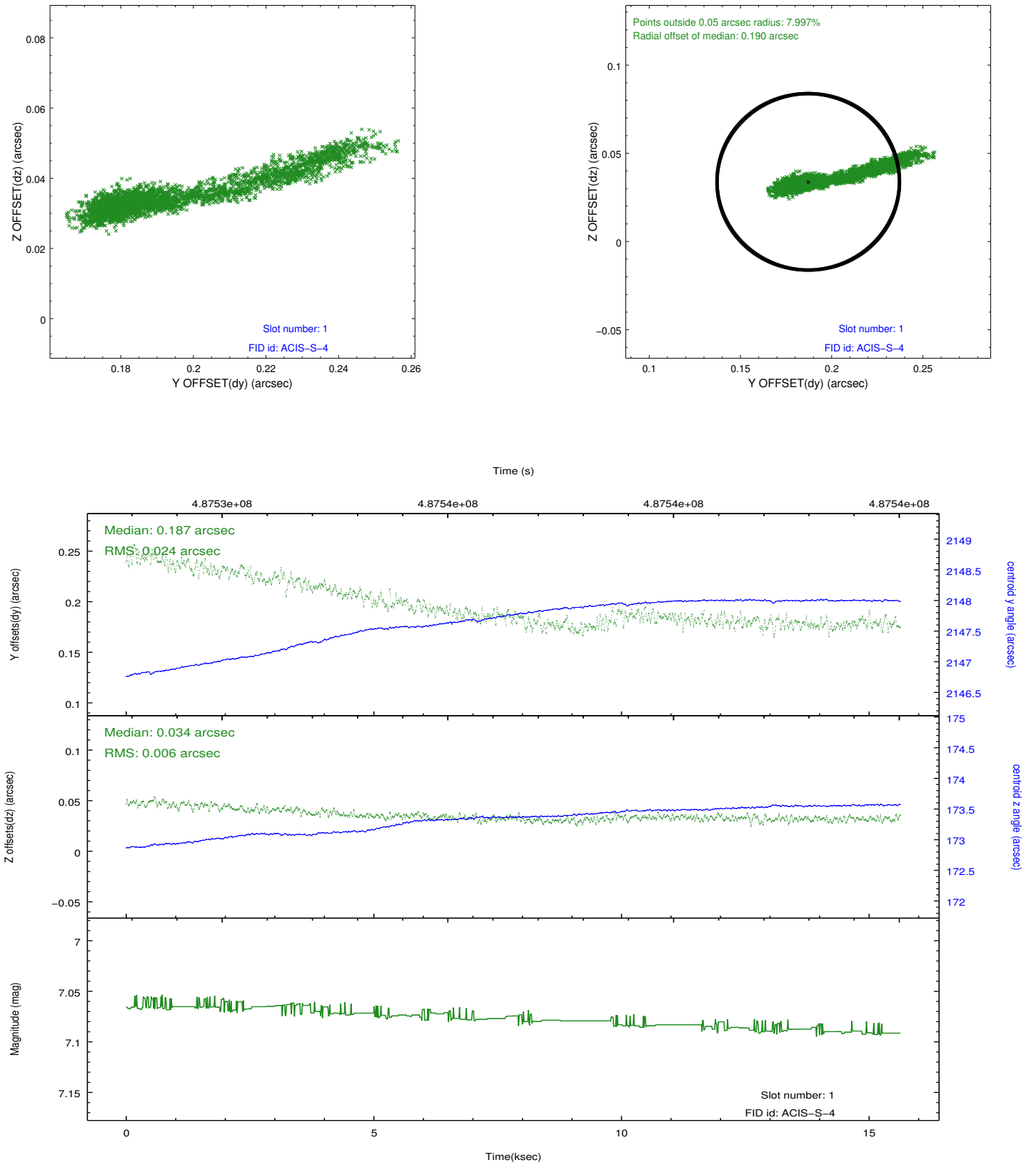


2.5 FID Slots

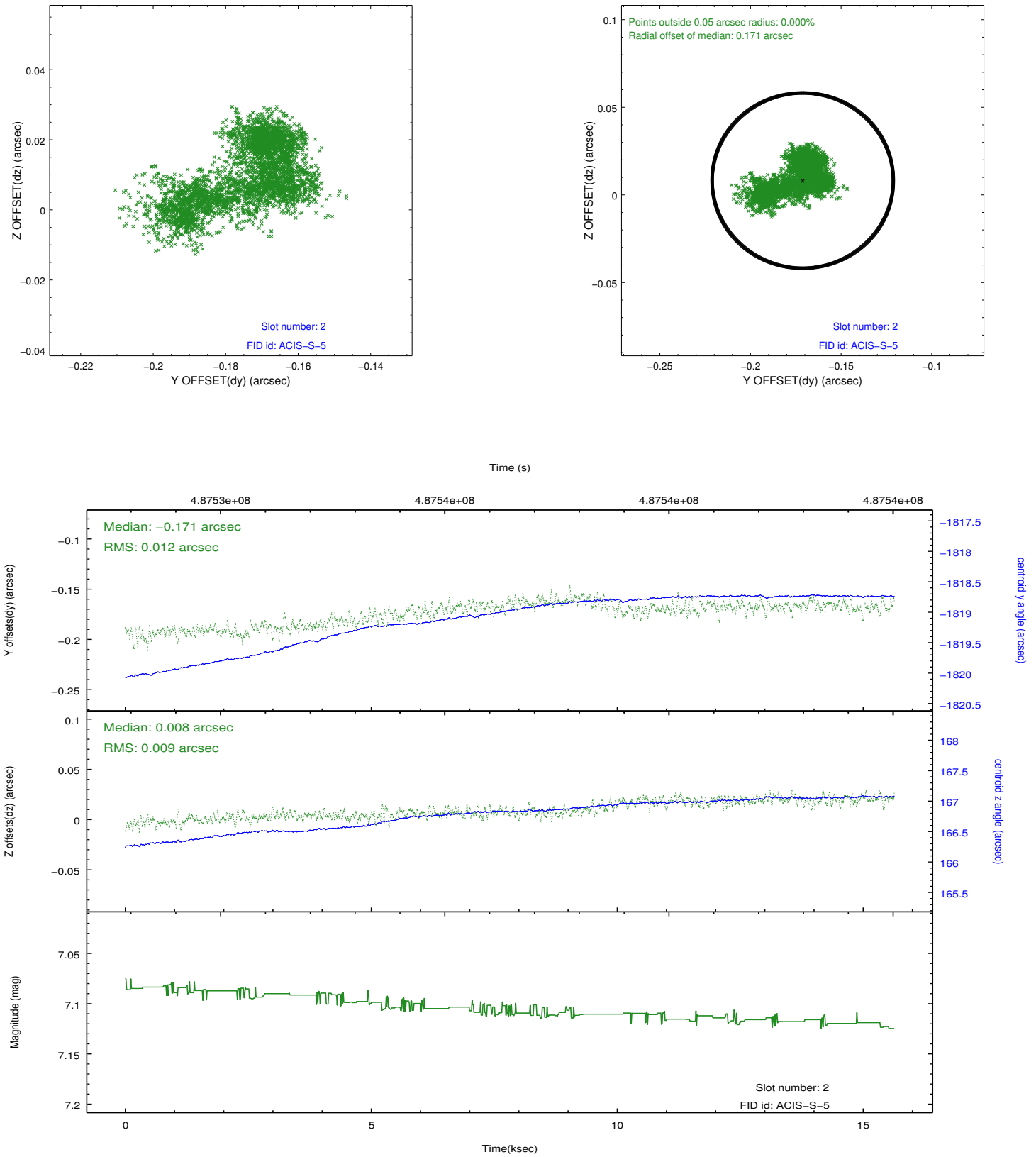
2.5.1 Slot 0



2.5.2 Slot 1



2.5.3 Slot 2



A Summary

A.1 Status

V&V Scientist	Jen Lauer
V&V Date (YYYY-MM-DD)	2014.12.11
V&V Edition	1
V&V Disposition and Status	OK
V&V Charge Time	14.965327389002

A.2 Comments

These data have been reprocessed with new aspect alignment calibration files that correct small mean offsets (up to 0.4 arcsecs) and improve overall astrometric accuracy. The new calibration was determined using data from the time period being reprocessed and was performed using cross-correlation of X-ray sources with radio and optical counterparts.