

V&V Reference Report

L2 ASCDS Version : 8.5.1.1

Observation 15072 - L2 Version 2
Chandra X-Ray Center

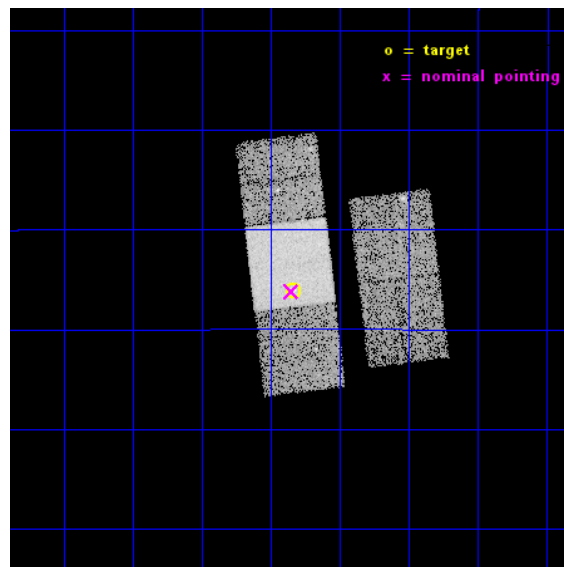
L2 Processing Date : Dec 3 2014

Contents

1	Front	2
2	OBI	3
2.1	OBI	3
2.1.1	Images	3
2.1.2	Bias	3
2.1.3	Parameters	4
2.1.4	Events	4
2.2	Compared Parameters	5
2.3	Aspect	6
2.4	Star Slots	9
2.4.1	Slot 3	9
2.4.2	Slot 4	10
2.4.3	Slot 5	11
2.4.4	Slot 6	12
2.4.5	Slot 7	13
2.5	FID Slots	14
2.5.1	Slot 0	14
2.5.2	Slot 1	15
2.5.3	Slot 2	16
A	Summary	17
A.1	Status	17
A.2	Comments	17

1 Front

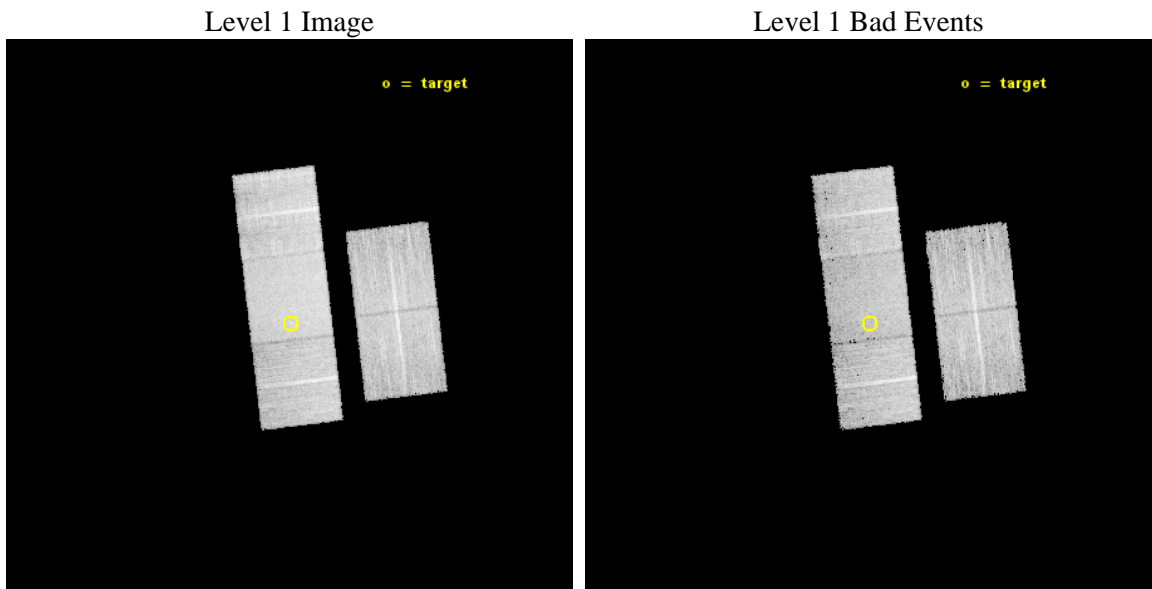
seq_num	702879	Sequence number
obs_id	15072	Observation id
title	C-GOALS: The Chandra-RBGS Survey of a Complete Sample of Major-Merger LIRGs	Proposal title
observer	Professor David Sanders	Principal investigator
object	MCG-02-33-098/9	Source name
dtcycle	0	
cycle	P	events from which exps? Prim/Second/Both
ra_targ	195.585417	Observer's specified target RA [deg]
dec_targ	-15.768056	Observer's specified target Dec [deg]
ra_nom	195.58784116449	Nominal RA [deg]
dec_nom	-15.769989423494	Nominal Dec [deg]
roll_nom	263.14111369092	Nominal Roll [deg]
revision	2	Processing version of data
ontime	15066.000115871	Sum of GTIs [s]
livetime	14869.15173293	Livetime [s]
ontime2	15066.000115871	Sum of GTIs [s]
ontime3	15062.859065413	Sum of GTIs [s]
ontime6	15066.000115871	Sum of GTIs [s]
ontime7	15066.000115871	Sum of GTIs [s]
ontime8	15066.000115871	Sum of GTIs [s]
l2events	76970	Number of level 2 events



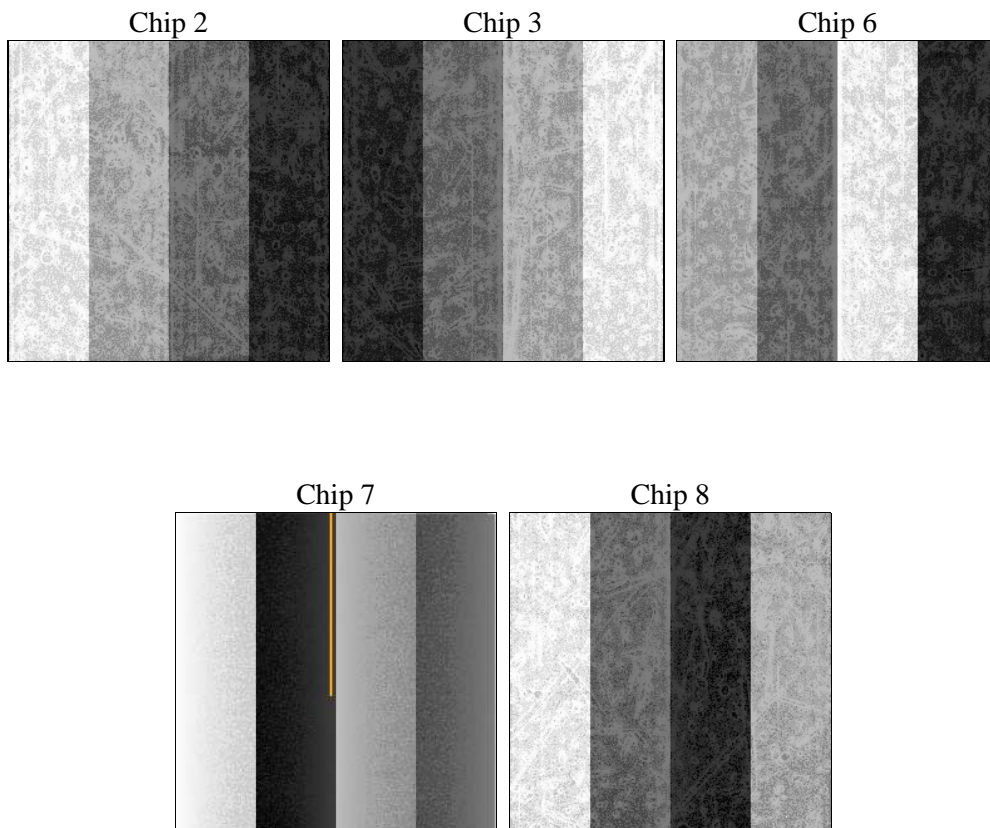
2 OBI

2.1 OBI

2.1.1 Images



2.1.2 Bias



2.1.3 Parameters

obi_num	0	Obi number	sched_exp_time	15000.000000	[s] Scheduled observation exposure time
ascdsver	10.3	Processing system revision	ontime	15066.000115871	Sum of GTIs [s]
caldsver	4.6.4	 	ontime2	15066.000115871	Sum of GTIs [s]
date	2014-12-03T05:42:31	Date and time of file creation	ontime3	15062.859065413	Sum of GTIs [s]
revision	2	Processing version of data	ontime6	15066.000115871	Sum of GTIs [s]
			ontime7	15066.000115871	Sum of GTIs [s]
			ontime8	15066.000115871	Sum of GTIs [s]
			l1events	434598	Number of level 1 events

2.1.4 Events

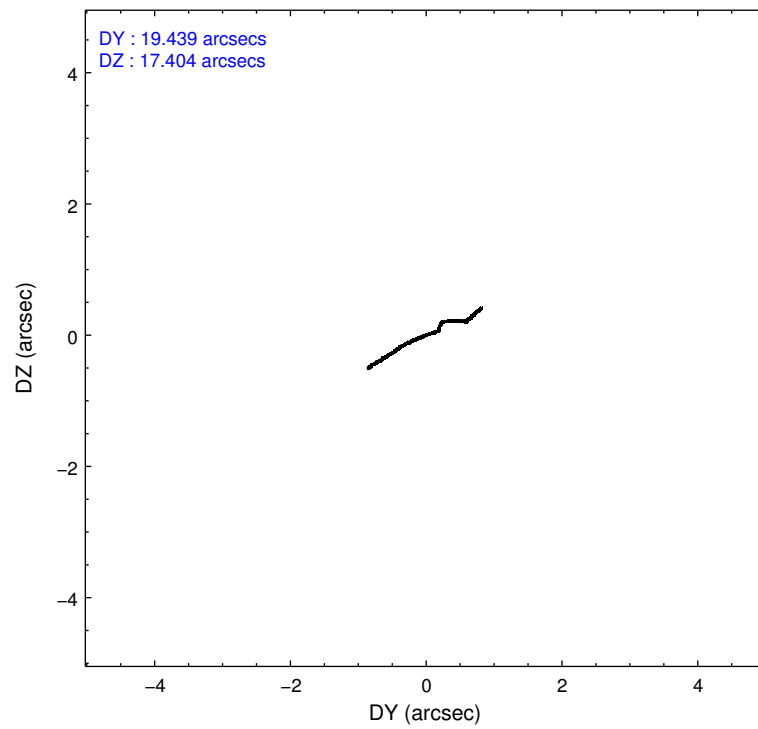
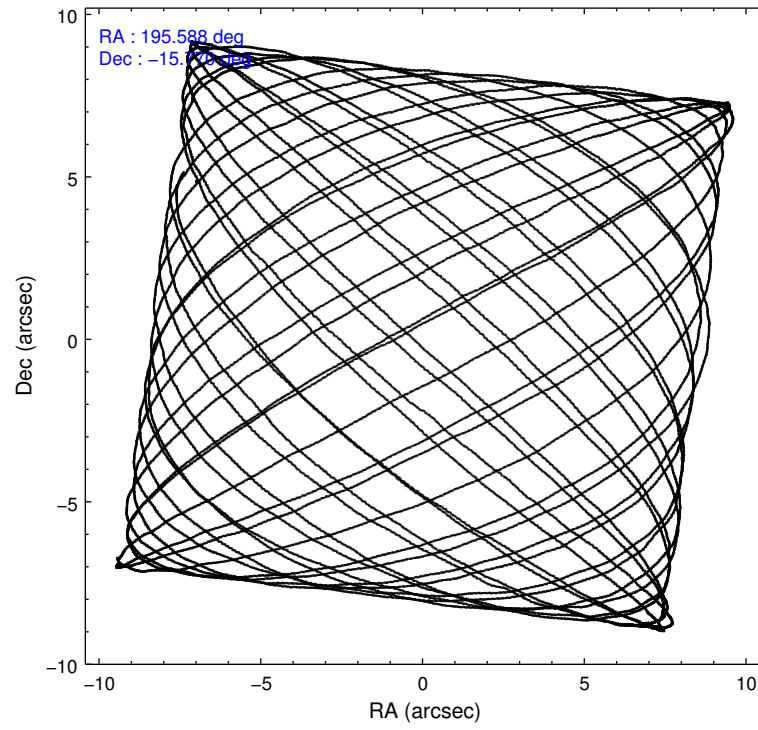
	ccd 2	ccd 3	ccd 6	ccd 7	ccd 8
level 1 events	73771	75953	77895	105479	101500
rejected events	65355	67168	68535	59353	75415
rejected %	88%	88%	87%	56%	74%

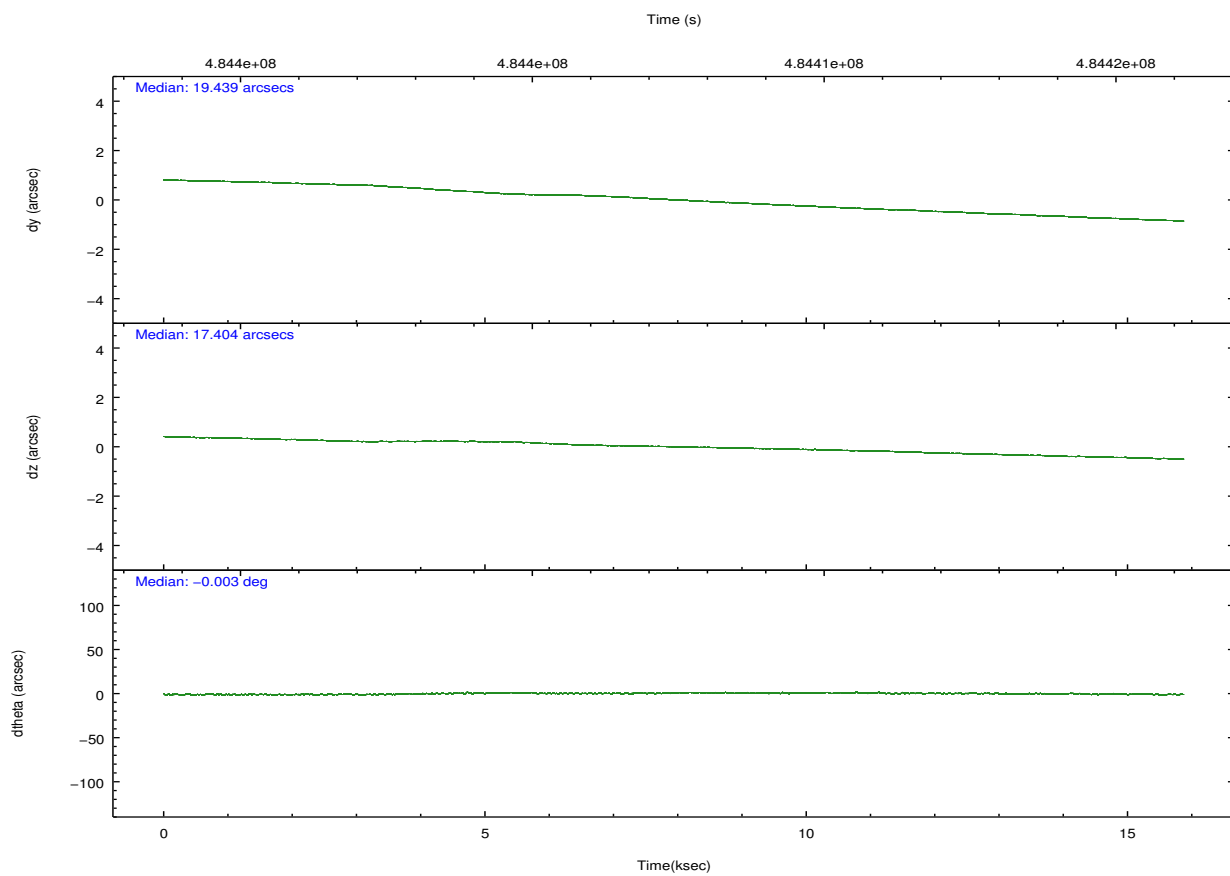
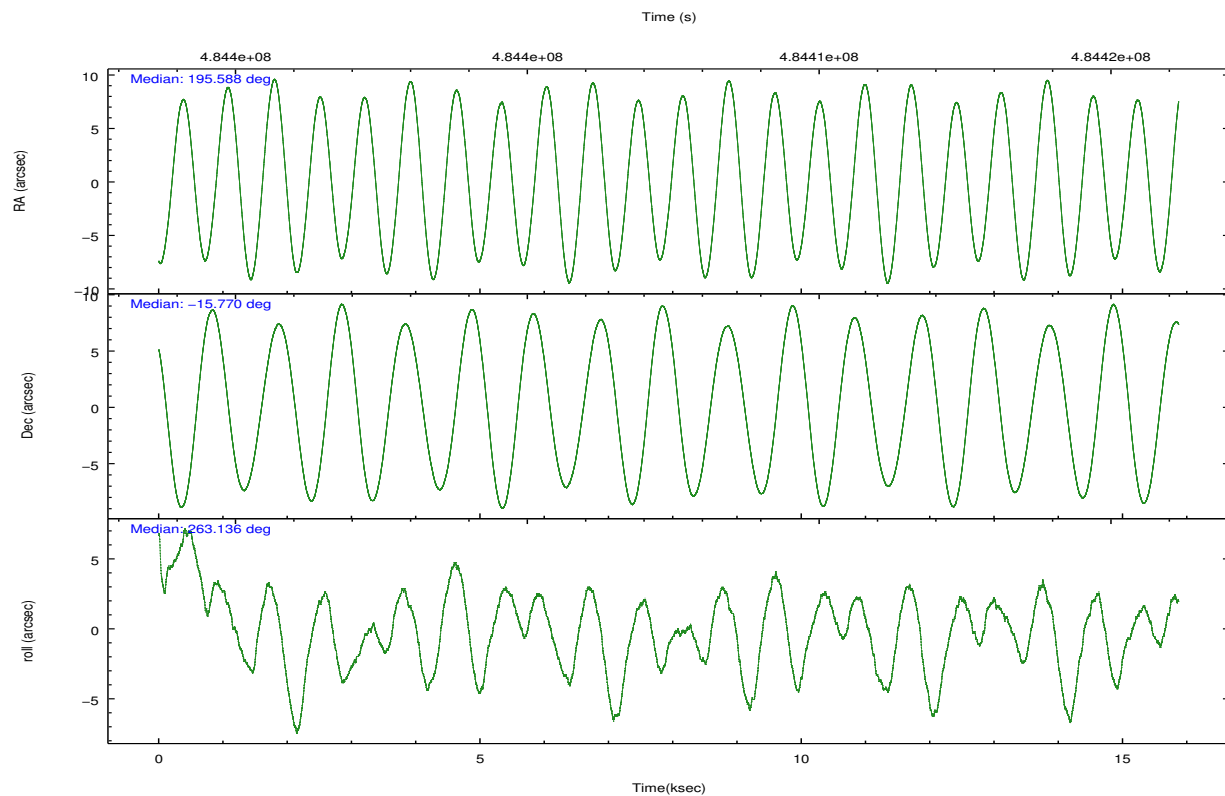
	ccd 2	ccd 3	ccd 6	ccd 7	ccd 8
grade 0 events	2929	3066	3058	4163	7425
	3%	4%	3%	3%	7%
grade 1 events	34	41	32	116	100
	0%	0%	0%	0%	0%
grade 2 events	2053	2035	2134	9583	6307
	2%	2%	2%	9%	6%
grade 3 events	888	894	955	3907	2788
	1%	1%	1%	3%	2%
grade 4 events	869	960	965	4039	2651
	1%	1%	1%	3%	2%
grade 5 events	3195	4150	4002	10770	5747
	4%	5%	5%	10%	5%
grade 6 events	1679	1834	2248	24443	6921
	2%	2%	2%	23%	6%
grade 7 events	62124	62973	64501	48458	69561
	84%	82%	82%	45%	68%

2.2 Compared Parameters

Parameter	Planned	Actual	Parameter	Planned	Actual
Instrument	ACIS	ACIS	Obspar format version number	7	7
Detector	ACIS-23678	ACIS-23678	Obspar file type	PREDICTED	ACTUAL
Grating	NONE	NONE	Obspar update status	NONE	UPDATED
Data mode	VFAINT	VFAINT	CCD I0 on	N	N
Observation mode	POINTING	POINTING	CCD I1 on	N	N
[deg] Pointing RA	195.576325	195.5878411644935	CCD I2 on	O2	Y
[deg] Pointing Dec	-15.744986	-15.76998942349352	CCD I3 on	Y	Y
[deg] Pointing Roll	262.981358	263.1411136909208	CCD S0 on	N	N
[mm] SIM focus pos	-0.684267	-0.6828225247311905	CCD S1 on	O1	N
[mm] SIM defocus	0	0.001444936568705701	CCD S2 on	Y	Y
[mm] SIM translation stage pos	-190.132523	-190.1400660498719	CCD S3 on	Y	Y
[mm] SIM translation stage offset	0	0.00754346686406393	CCD S4 on	Y	Y
[s] Observation start time (MET)	484400363.184000	484398953.94914	CCD S5 on	N	N
Observation start date	2013-05-08T11:38:16	2013-05-08T11:15:53	Number of optional ACIS chips dropped	1	1
[s] Observation end time (MET)	484415363.184000	484416029.42507	On-chip summing requested	N	N
Observation end date	2013-05-08T15:48:16	2013-05-08T16:00:29	Subarray requested	NONE	NONE
Read mode	TIMED	TIMED	Alternating exposures requested	N	N
			[s] Primary exposure time	0.000000	3.1

2.3 Aspect



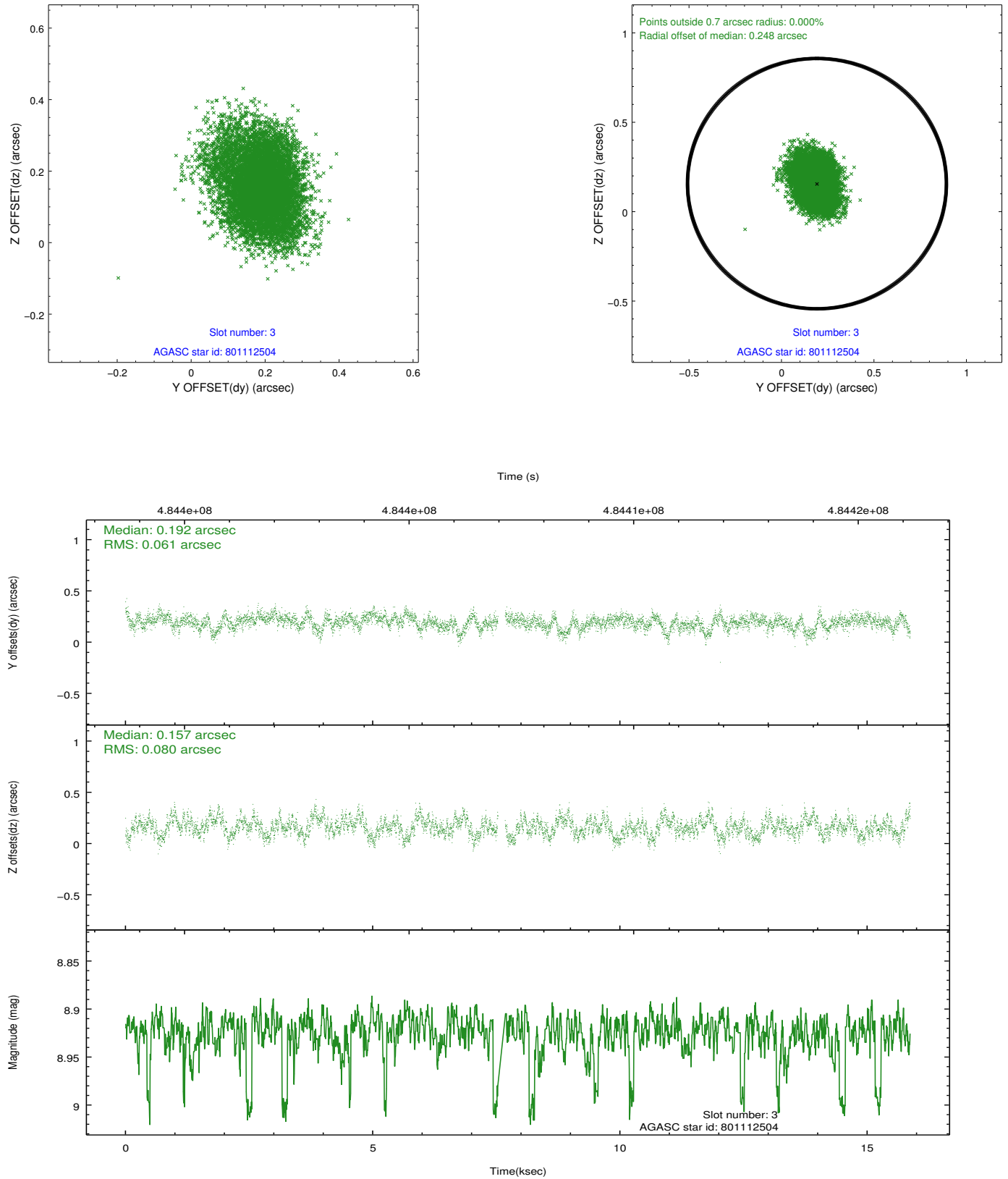


Slot Statistics

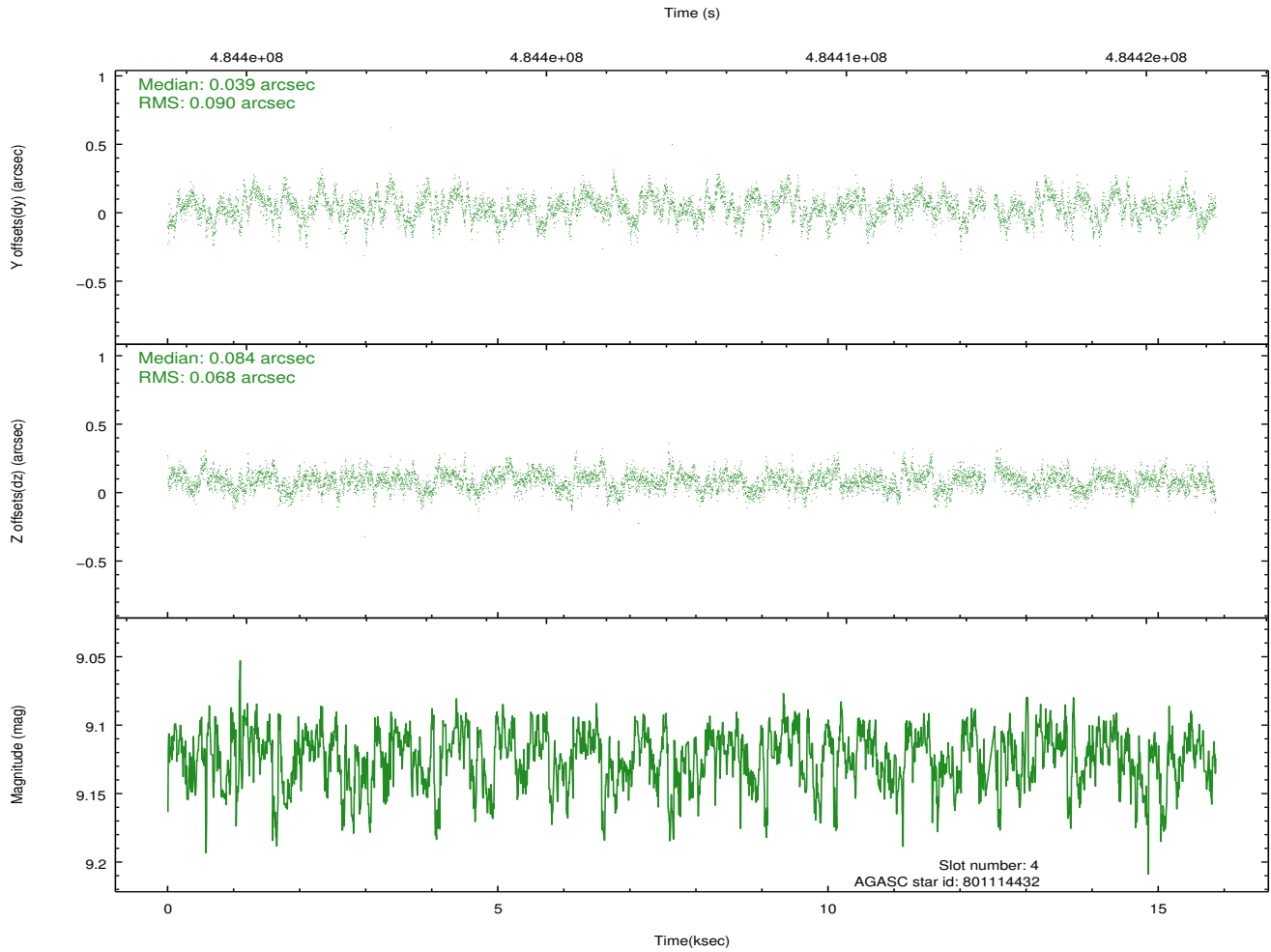
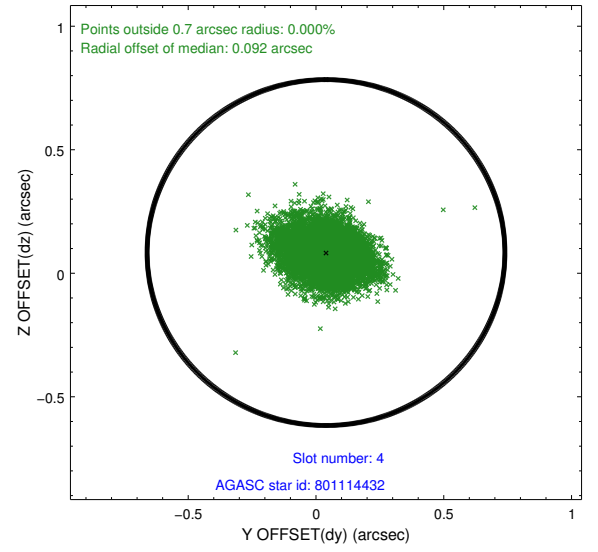
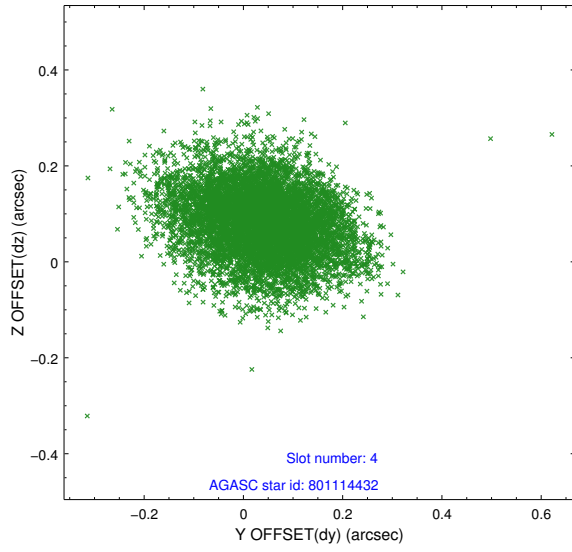
slot	status	used	id	mag	n_pts	med_dy	med_dz	dr1	dr2	ra	dec	mean_y	mean_z
0	FID		ACIS-S-2	6.95	3871	-0.109	-0.040	0.012	0.022	0.000000	0.000000	-772.68	-1738.85
1	FID		ACIS-S-4	7.03	3871	0.265	0.064	0.010	0.015	0.000000	0.000000	2140.89	169.38
2	FID		ACIS-S-5	7.06	3871	-0.191	-0.016	0.013	0.023	0.000000	0.000000	-1825.20	163.38
3	GUIDE	used	801112504	8.92	7640	0.192	0.157	0.108	0.176	195.169355	-15.358546	-1206.03	-1571.95
4	GUIDE	used	801114432	9.12	7674	0.039	0.084	0.120	0.197	195.025247	-16.227751	1960.55	-1678.03
5	GUIDE	used	801115240	7.86	7743	-0.129	-0.189	0.077	0.132	195.912542	-16.336572	1973.67	1411.77
6	GUIDE	used	801119008	7.88	7742	-0.261	-0.245	0.081	0.124	195.838983	-16.279549	1800.00	1136.30
7	GUIDE	used	801124224	8.90	7738	0.164	0.201	0.092	0.144	195.074413	-15.250840	-1549.58	-1947.16

2.4 Star Slots

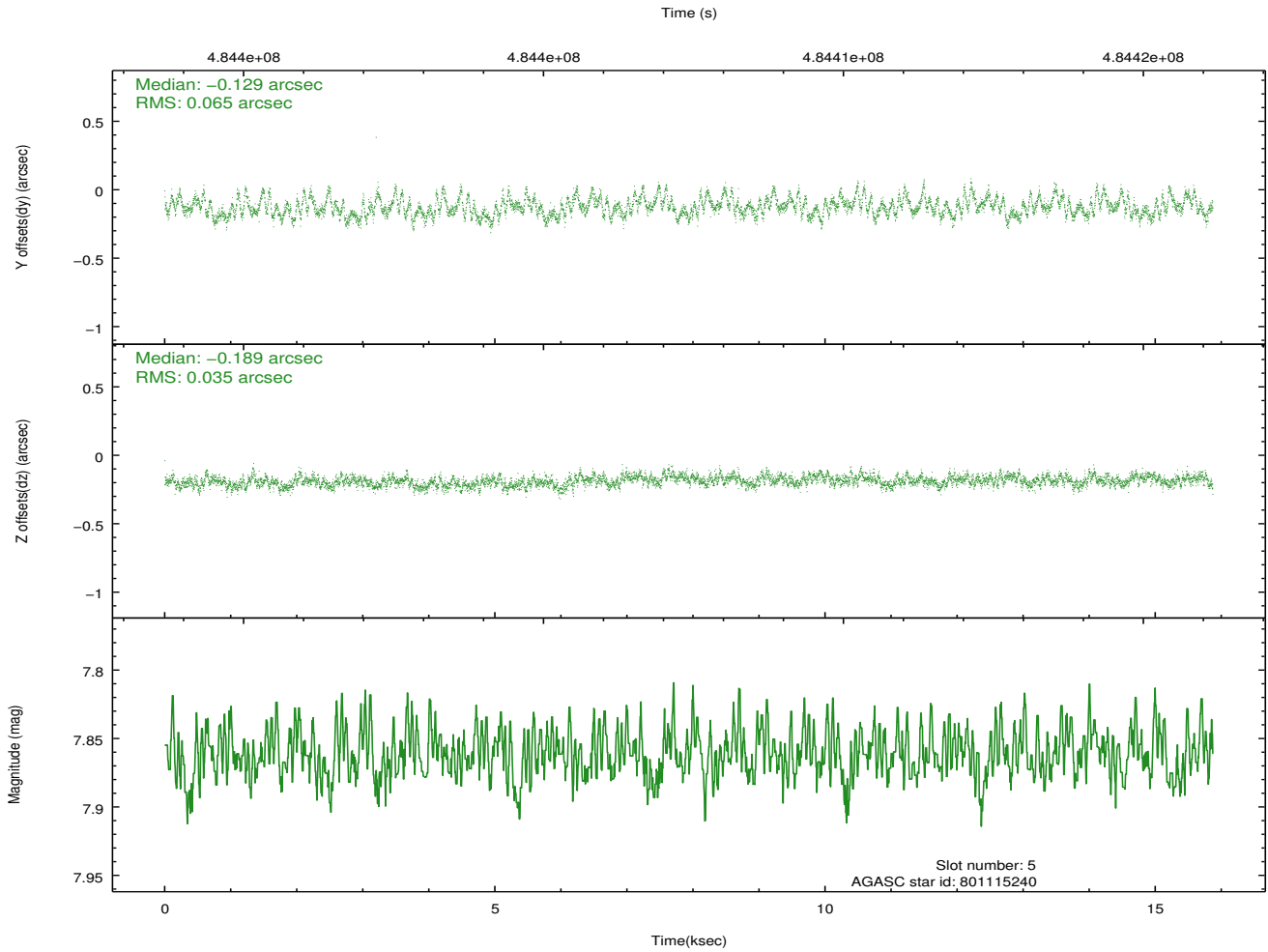
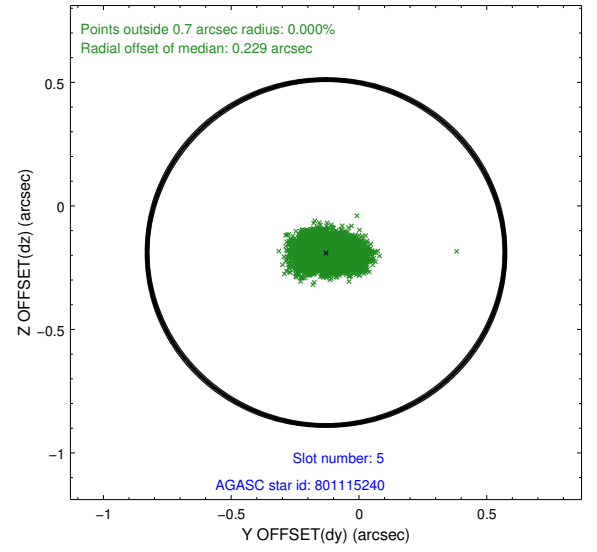
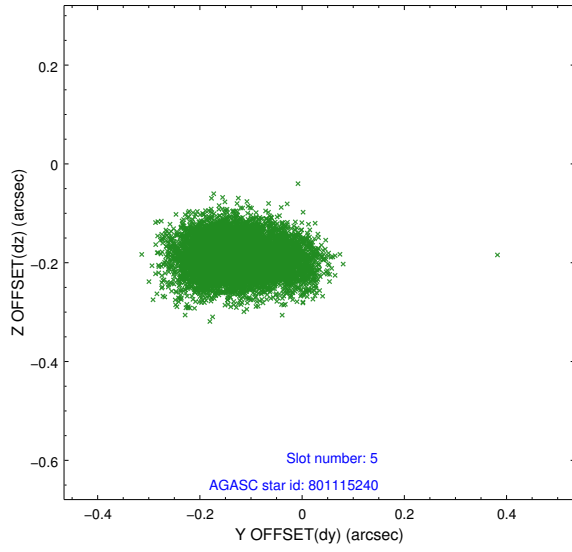
2.4.1 Slot 3



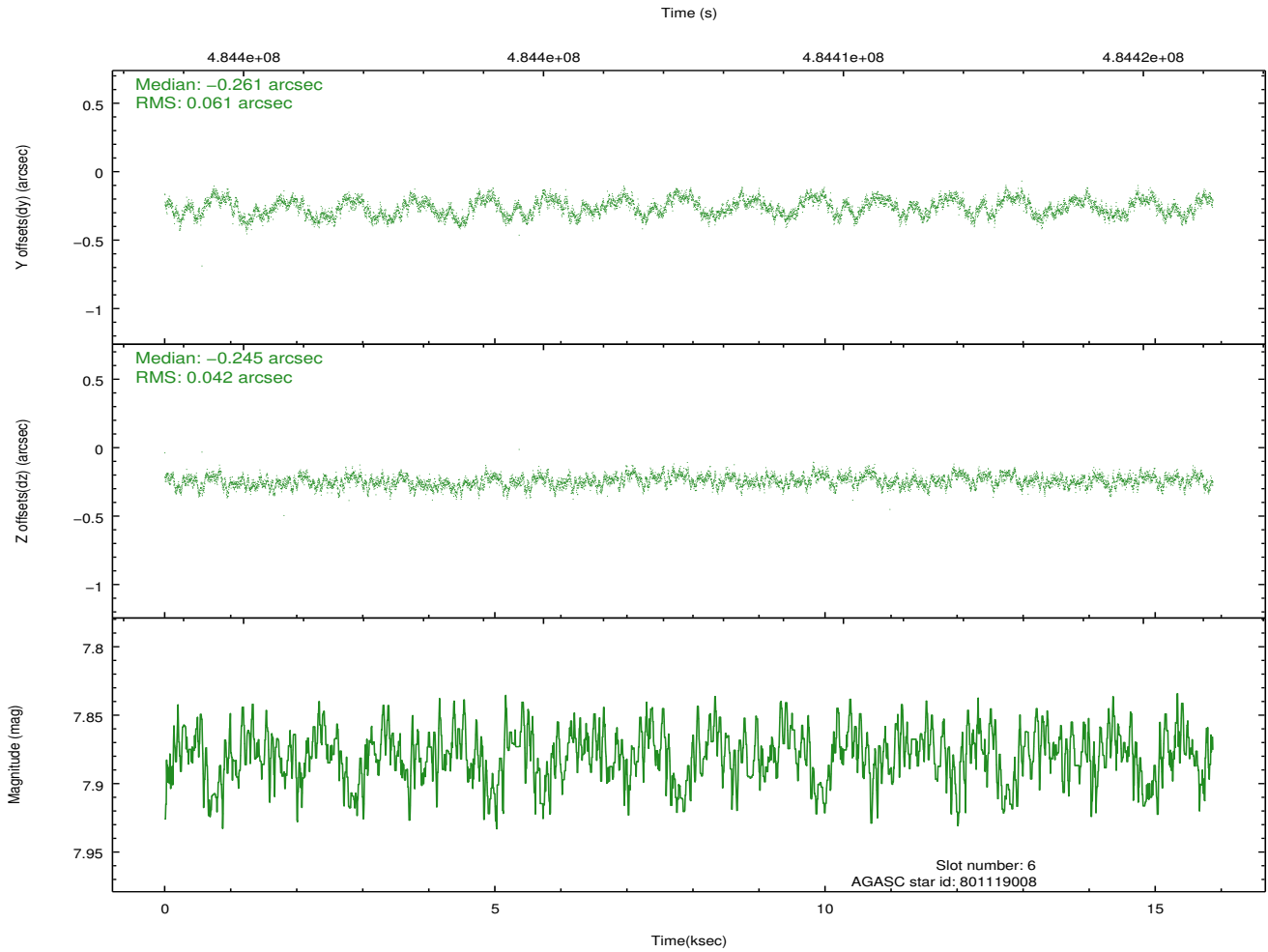
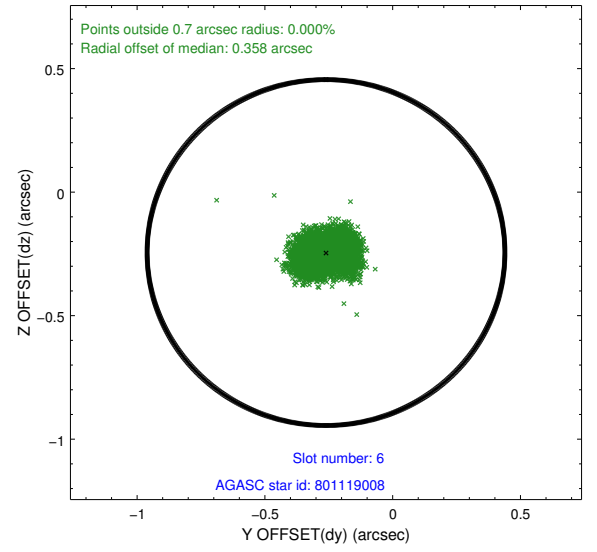
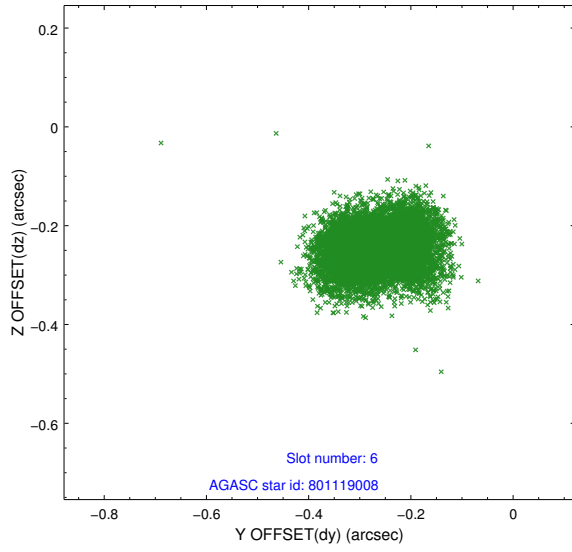
2.4.2 Slot 4



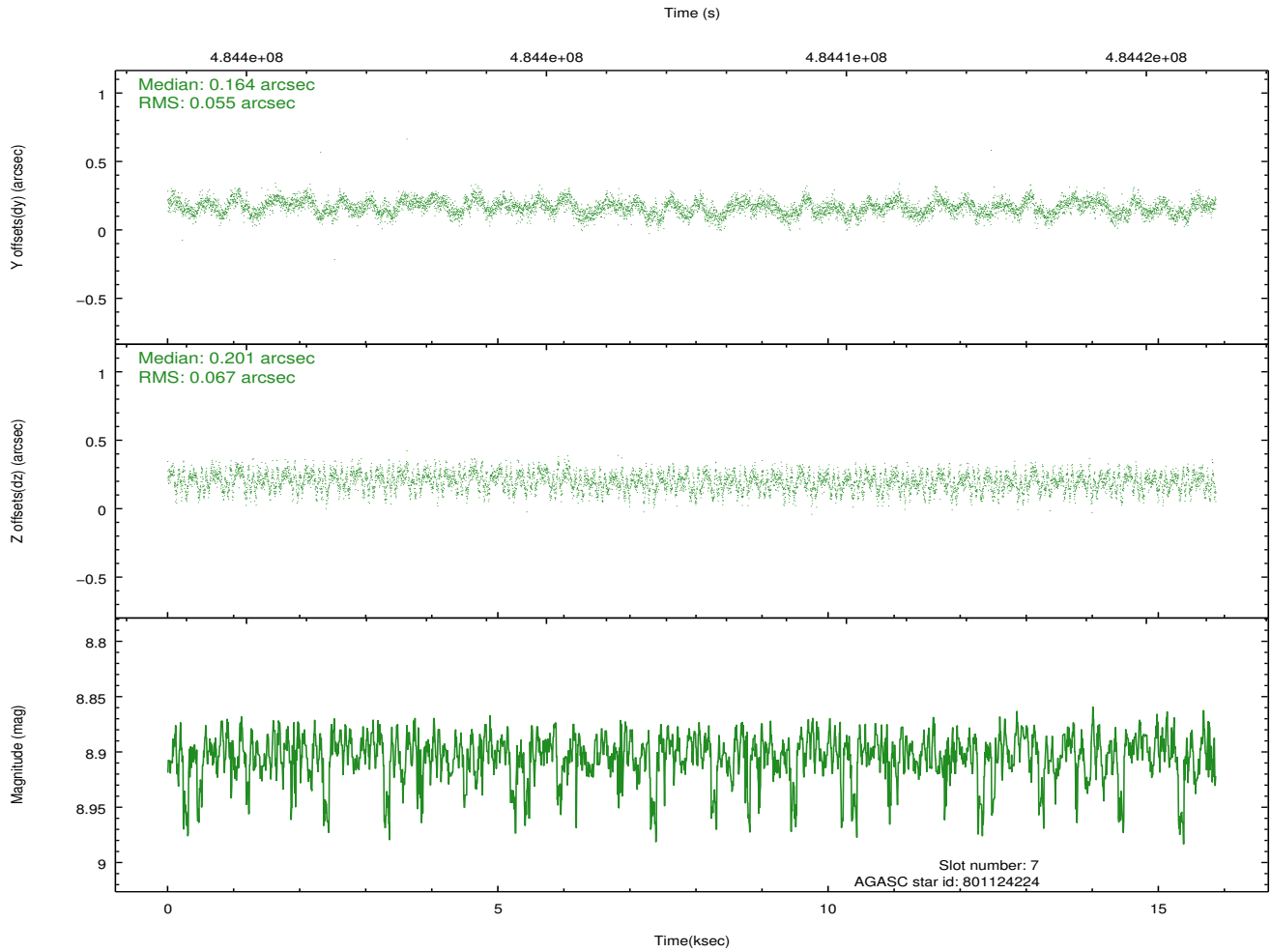
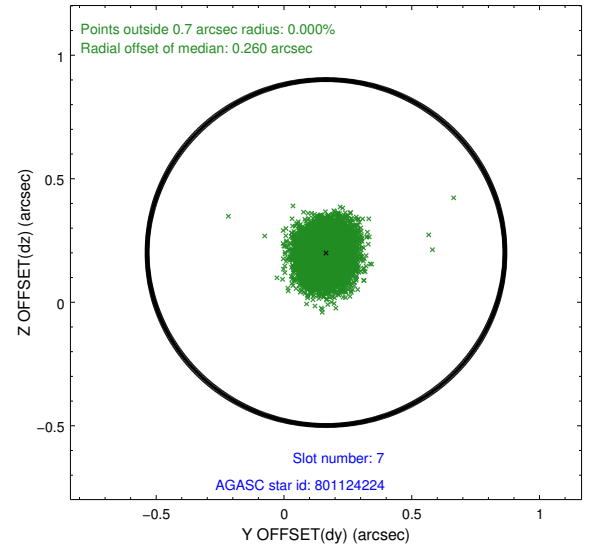
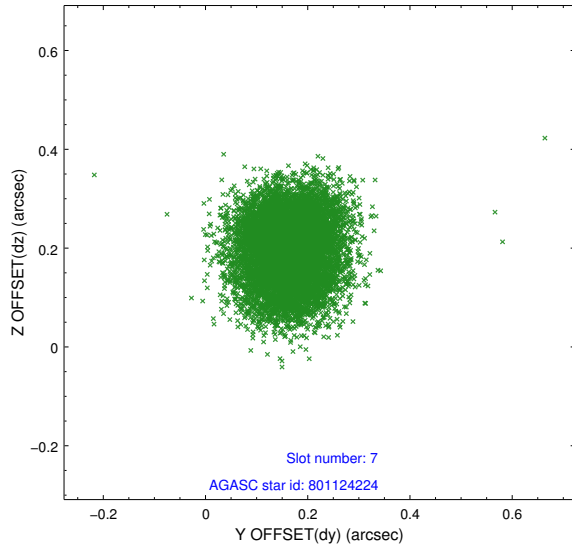
2.4.3 Slot 5



2.4.4 Slot 6

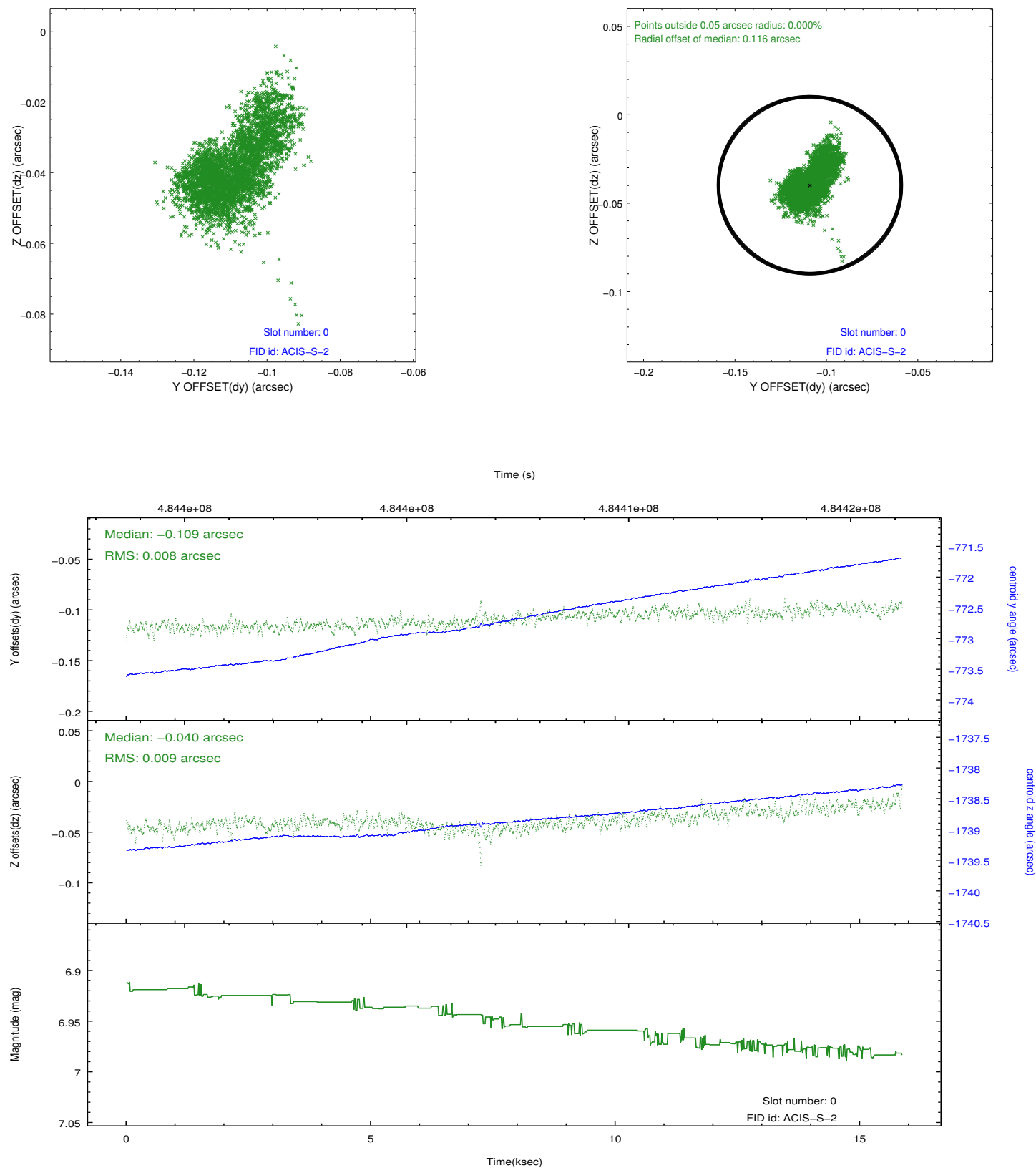


2.4.5 Slot 7

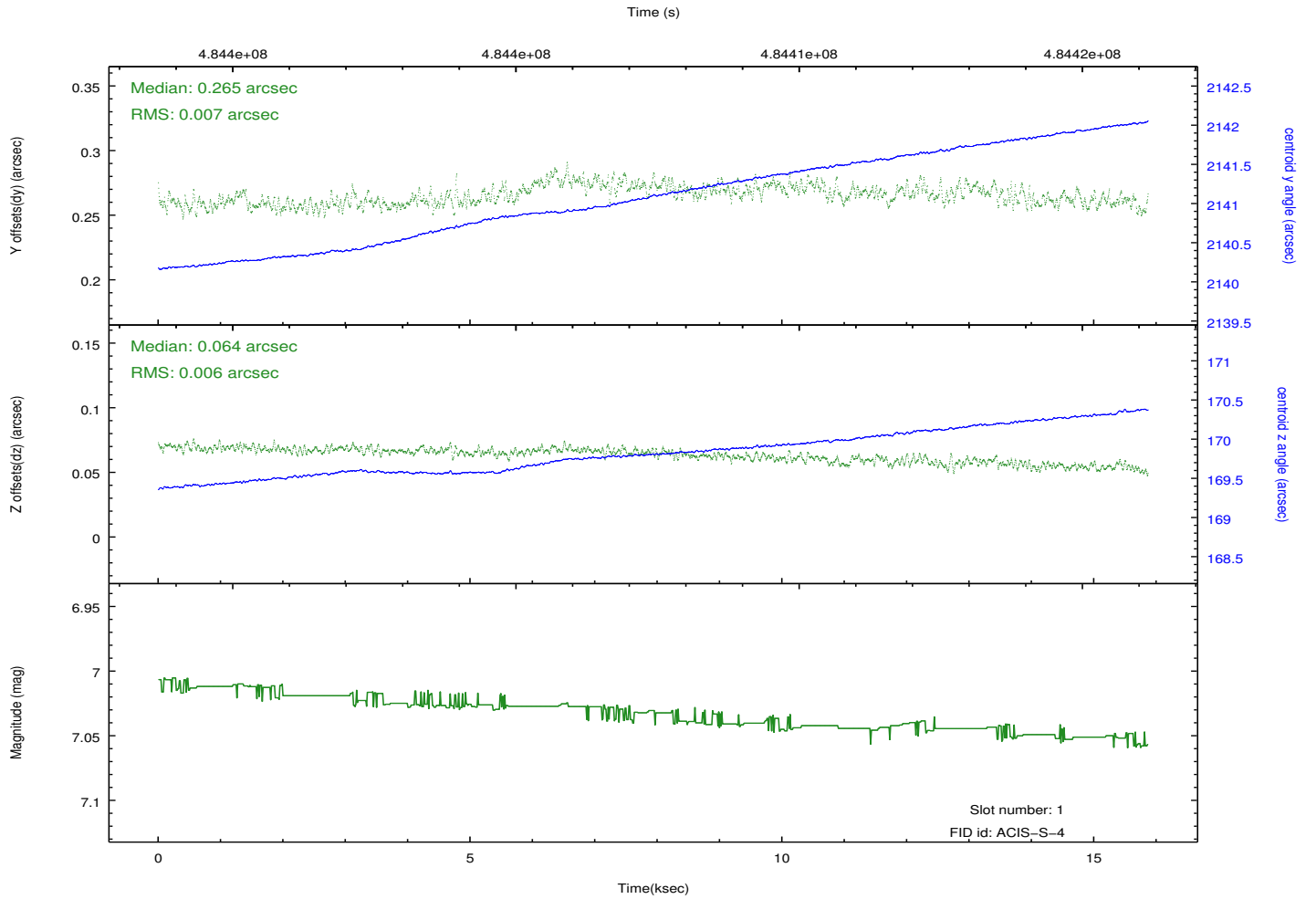
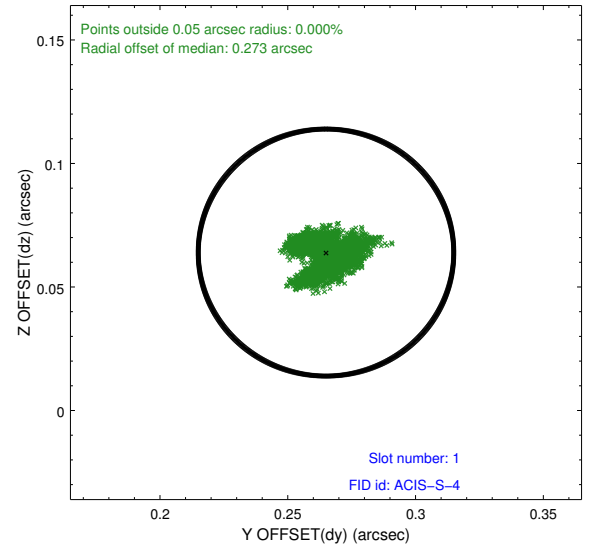
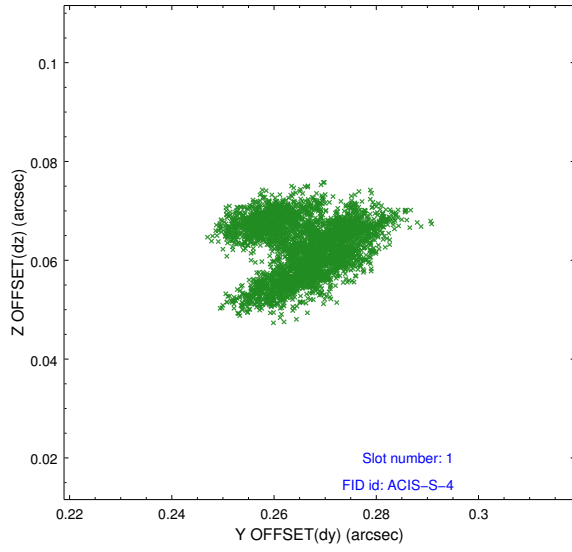


2.5 FID Slots

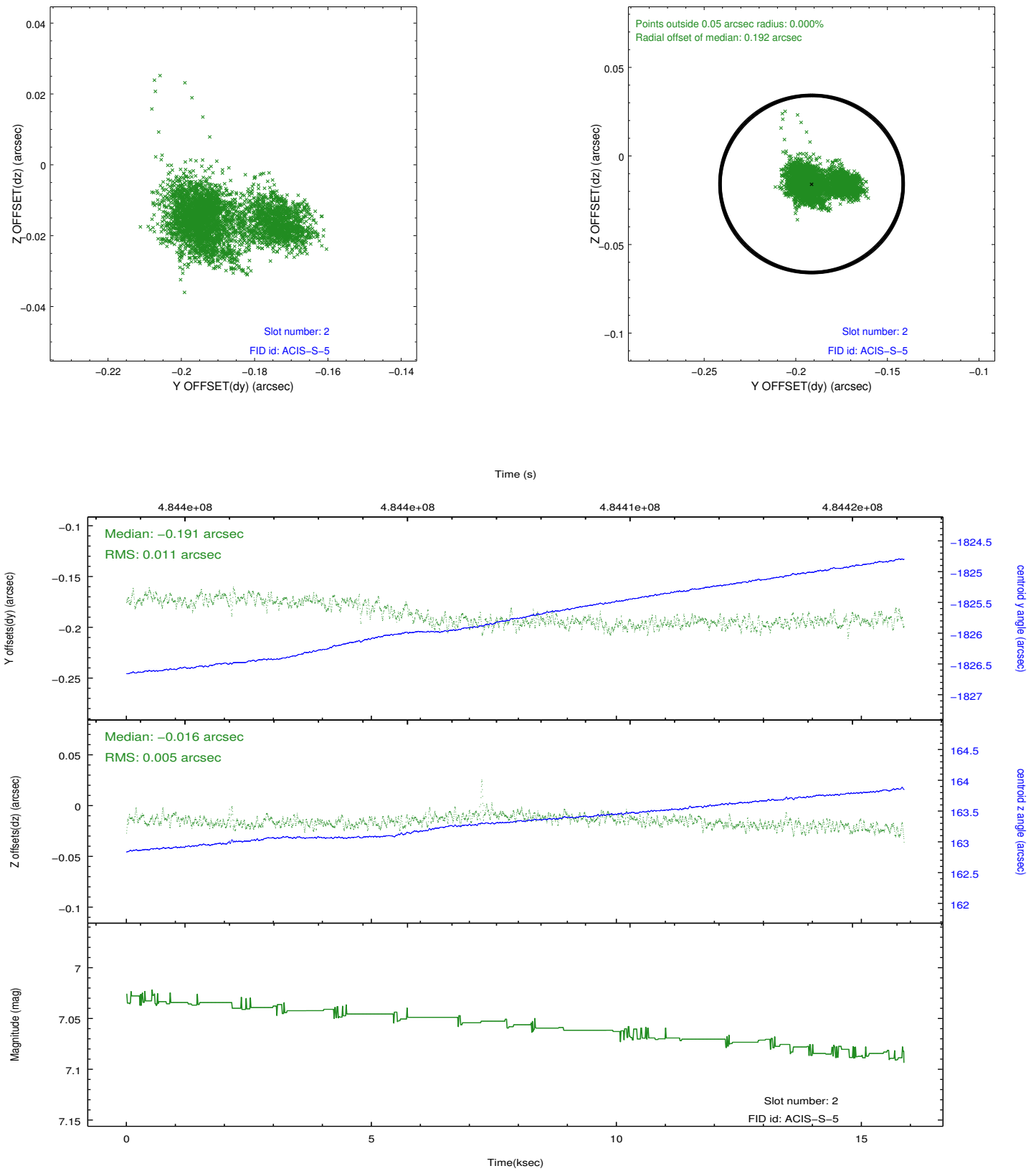
2.5.1 Slot 0



2.5.2 Slot 1



2.5.3 Slot 2



A Summary

A.1 Status

V&V Scientist	Jen Lauer
V&V Date (YYYY-MM-DD)	2014.12.10
V&V Edition	1
V&V Disposition and Status	OK
V&V Charge Time	15.066000115871

A.2 Comments

Optional chip S1 not used.

=====

These data have been reprocessed with new aspect alignment calibration files that correct small mean offsets (up to 0.4 arcsecs) and improve overall astrometric accuracy. The new calibration was determined using data from the time period being reprocessed and was performed using cross-correlation of X-ray sources with radio and optical counterparts.