

V&V Reference Report

L2 ASCDS Version : 10

Observation 15063 - L2 Version 2
Chandra X-Ray Center

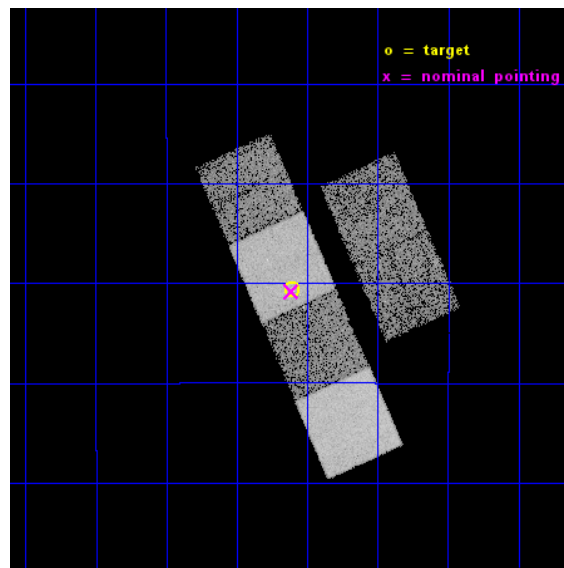
L2 Processing Date : Dec 4 2014

Contents

1	Front	2
2	OBI	3
2.1	OBI	3
2.1.1	Images	3
2.1.2	Bias	3
2.1.3	Parameters	4
2.1.4	Events	4
2.2	Compared Parameters	5
2.3	Aspect	6
2.4	Star Slots	9
2.4.1	Slot 3	9
2.4.2	Slot 4	10
2.4.3	Slot 5	11
2.4.4	Slot 6	12
2.4.5	Slot 7	13
2.5	FID Slots	14
2.5.1	Slot 0	14
2.5.2	Slot 1	15
2.5.3	Slot 2	16
A	Summary	17
A.1	Status	17
A.2	Comments	17

1 Front

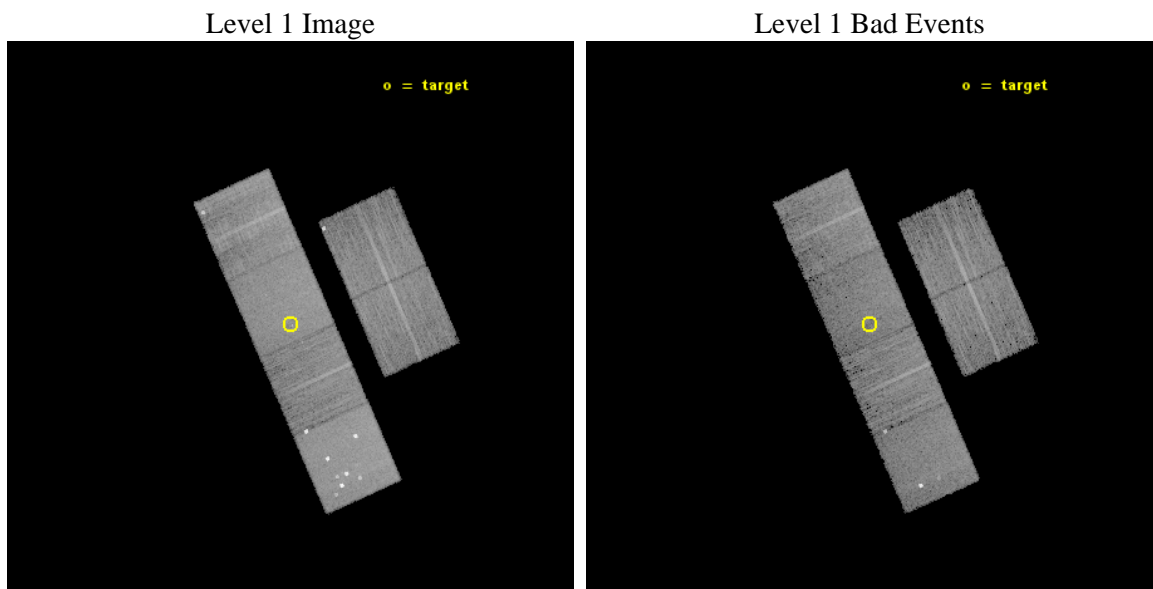
seq_num	702870	Sequence number
obs_id	15063	Observation id
title	C-GOALS: The Chandra-RBGS Survey of a Complete Sample of Major-Merger LIRGs	Proposal title
observer	Professor David Sanders	Principal investigator
object	IRAS F17138-1017	Source name
dtcycle	0	
cycle	P	events from which exps? Prim/Second/Both
ra_targ	259.15125	Observer's specified target RA [deg]
dec_targ	-10.344444	Observer's specified target Dec [deg]
ra_nom	259.15292757026	Nominal RA [deg]
dec_nom	-10.346984633437	Nominal Dec [deg]
roll_nom	246.00257311447	Nominal Roll [deg]
revision	2	Processing version of data
ontime	14966.399944305	Sum of GTIs [s]
livetime	14776.886376526	Livetime [s]
ontime2	14966.399944305	Sum of GTIs [s]
ontime3	14966.399944305	Sum of GTIs [s]
ontime5	14966.399944305	Sum of GTIs [s]
ontime6	14966.399944305	Sum of GTIs [s]
ontime7	14966.399944305	Sum of GTIs [s]
ontime8	14966.399944305	Sum of GTIs [s]
l2events	121098	Number of level 2 events



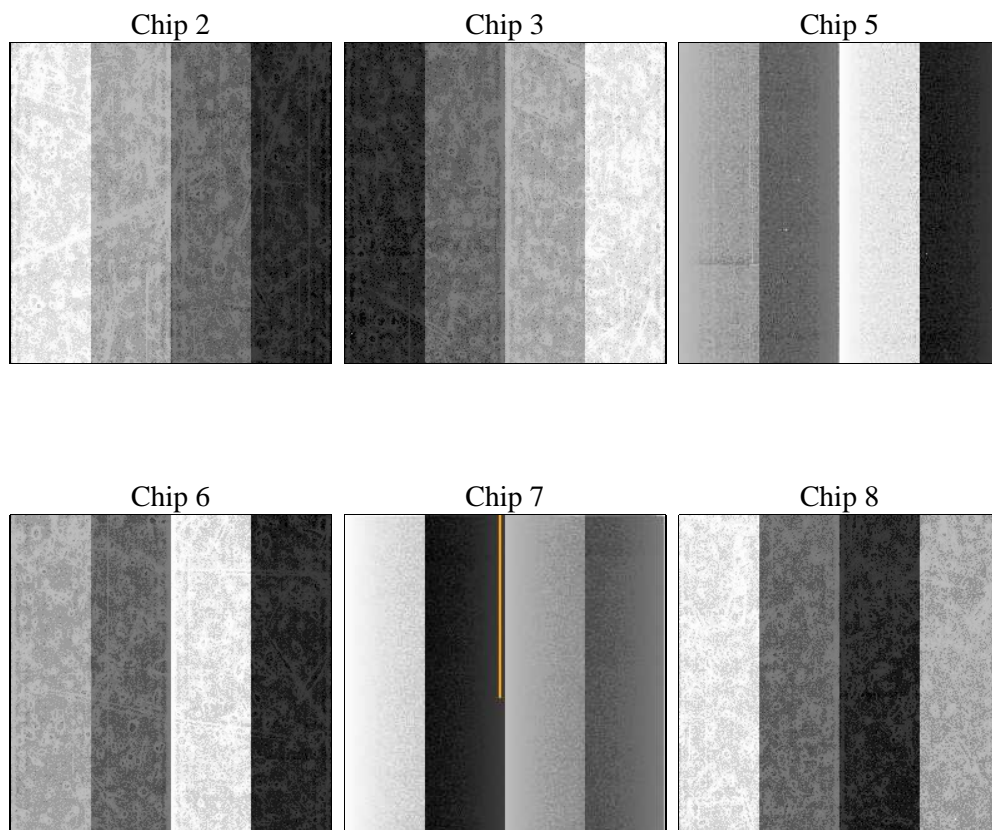
2 OBI

2.1 OBI

2.1.1 Images



2.1.2 Bias



2.1.3 Parameters

obi_num	0	Obi number	sched_exp_time	15000.575000	[s] Scheduled observation exposure time
ascdsver	10.3	Processing system revision	ontime	14966.399944305	Sum of GTIs [s]
caldbver	4.6.4	 	ontime2	14966.399944305	Sum of GTIs [s]
date	2014-12-04T18:56:22	Date and time of file creation	ontime3	14966.399944305	Sum of GTIs [s]
revision	2	Processing version of data	ontime5	14966.399944305	Sum of GTIs [s]
			ontime6	14966.399944305	Sum of GTIs [s]
			ontime7	14966.399944305	Sum of GTIs [s]
			ontime8	14966.399944305	Sum of GTIs [s]
			l1events	542100	Number of level 1 events

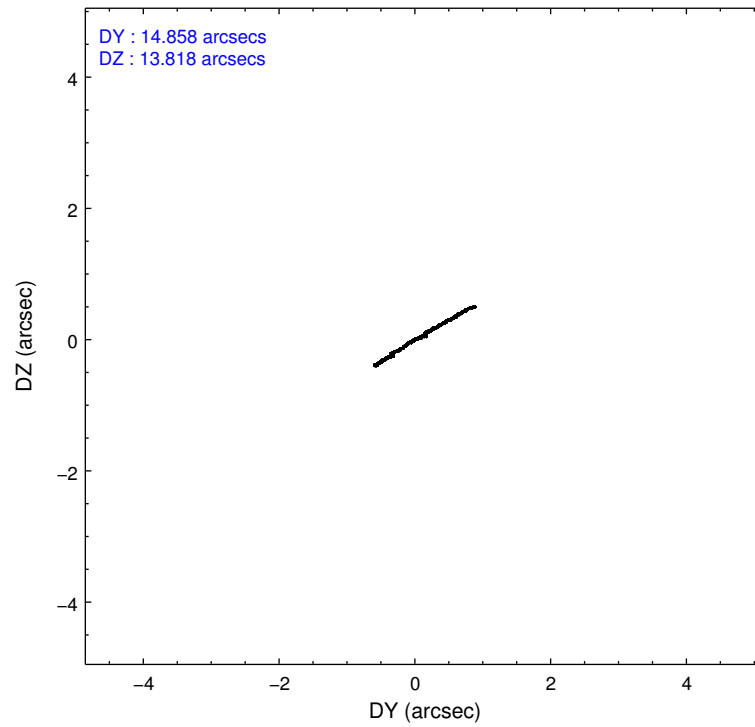
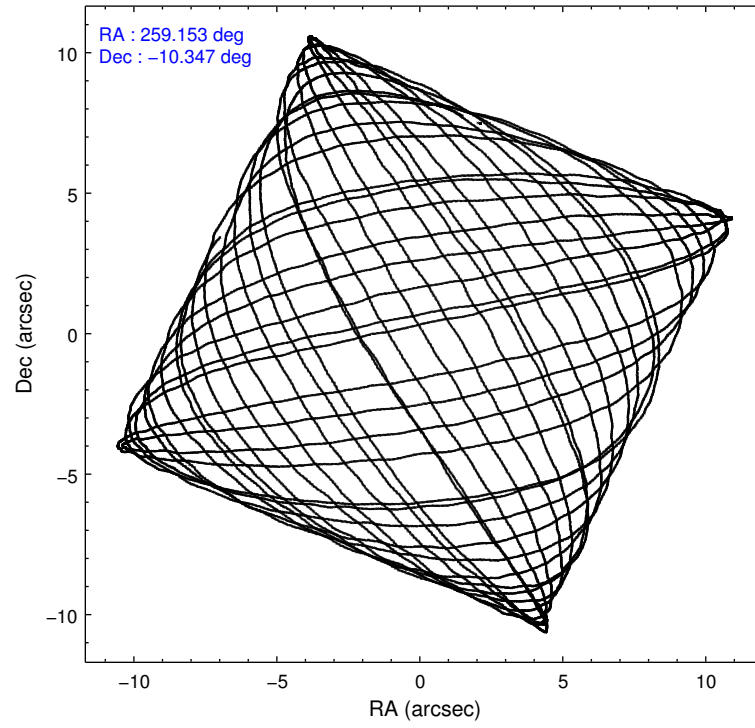
2.1.4 Events

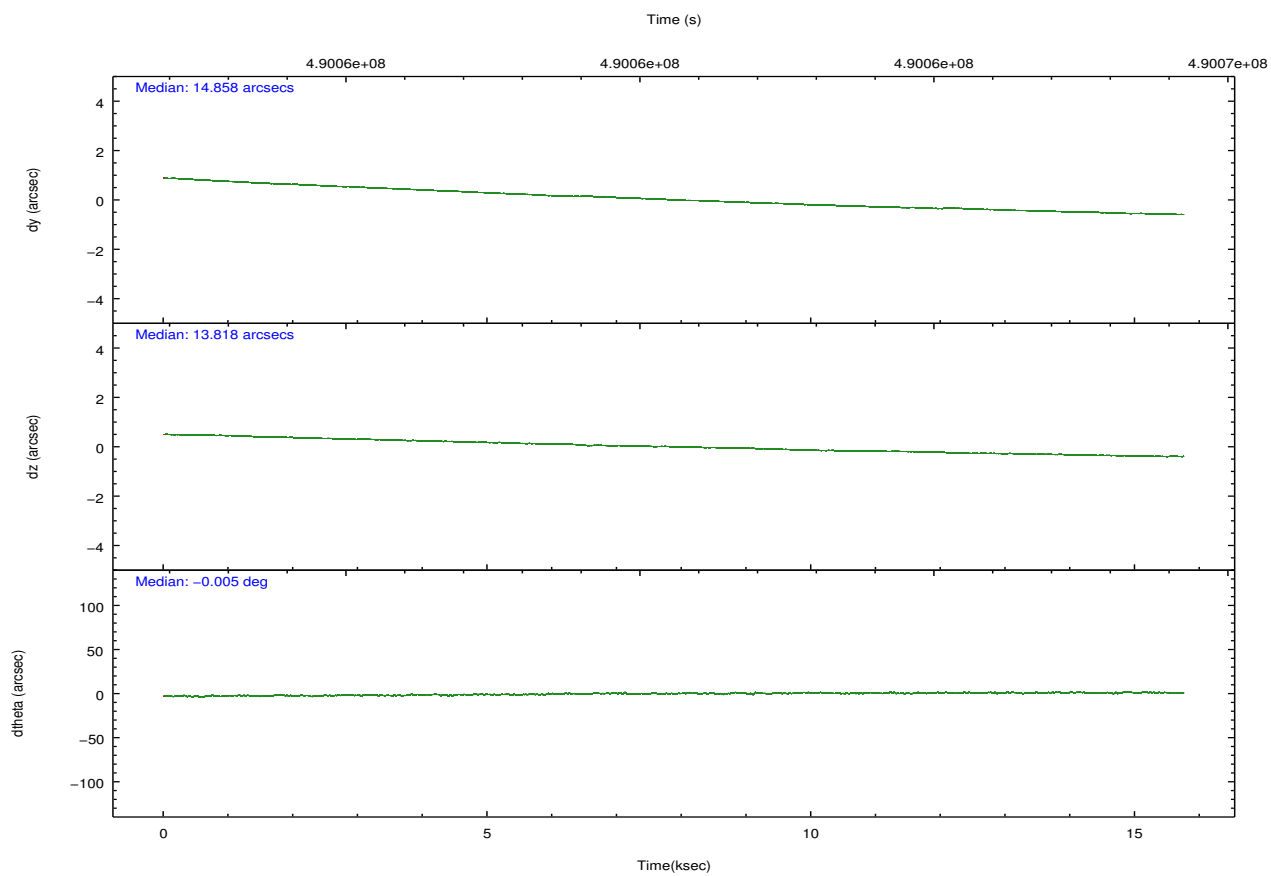
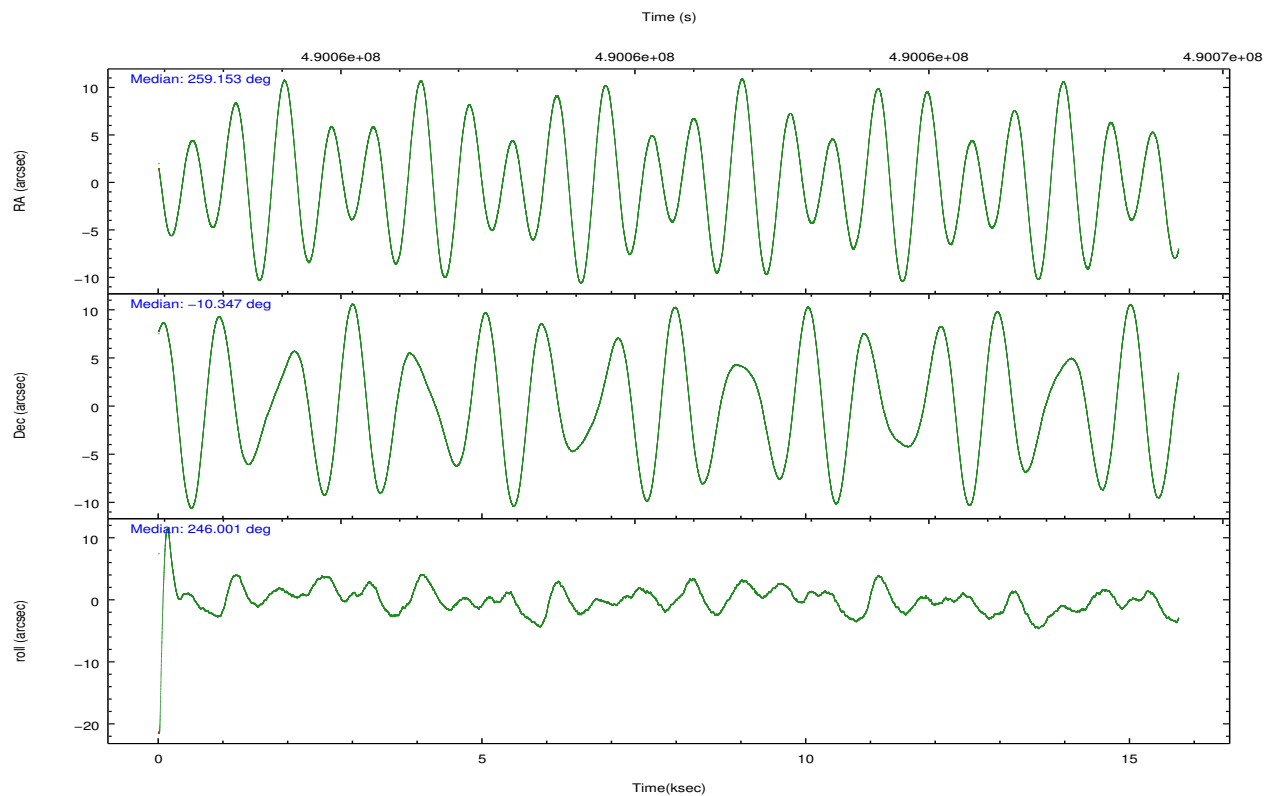
	ccd 2	ccd 3	ccd 5	ccd 6	ccd 7	ccd 8		ccd 2	ccd 3	ccd 5	ccd 6	ccd 7	ccd 8
level 1 events	70806	70054	138029	71866	96095	95250	grade 0 events	2838	4314	18059	2949	3542	7466
rejected events	62934	60727	64585	63245	54974	71444		4%	6%	13%	4%	3%	7%
rejected %	88%	86%	46%	88%	57%	75%	grade 1 events	52	41	393	35	111	64
								0%	0%	0%	0%	0%	0%
							grade 2 events	1855	1665	18722	1982	8530	5582
								2%	2%	13%	2%	8%	5%
							grade 3 events	787	849	2203	815	3356	2286
								1%	1%	1%	1%	3%	2%
							grade 4 events	810	826	1769	864	3224	2176
								1%	1%	1%	1%	3%	2%
							grade 5 events	3059	3538	8623	3488	9526	5329
								4%	5%	6%	4%	9%	5%
							grade 6 events	1585	1674	32712	2013	22481	6302
								2%	2%	23%	2%	23%	6%
							grade 7 events	59820	57147	55548	59720	45325	66045
								84%	81%	40%	83%	47%	69%

2.2 Compared Parameters

Parameter	Planned	Actual	Parameter	Planned	Actual
Instrument	ACIS	ACIS	Obspar format version number	7	7
Detector	ACIS-235678	ACIS-235678	Obspar file type	PREDICTED	ACTUAL
Grating	NONE	NONE	Obspar update status	NONE	UPDATED
Data mode	VFAINT	VFAINT	CCD I0 on	N	N
Observation mode	POINTING	POINTING	CCD I1 on	N	N
[deg] Pointing RA	259.149668	259.1529275702578	CCD I2 on	O2	Y
[deg] Pointing Dec	-10.319821	-10.34698463343747	CCD I3 on	Y	Y
[deg] Pointing Roll	245.845388	246.0025731144668	CCD S0 on	N	N
[mm] SIM focus pos	-0.684267	-0.6828225247311905	CCD S1 on	O1	Y
[mm] SIM defocus	0	0.001444936568705701	CCD S2 on	Y	Y
[mm] SIM translation stage pos	-190.132523	-190.1400660498719	CCD S3 on	Y	Y
[mm] SIM translation stage offset	0	0.00754346686406393	CCD S4 on	Y	Y
[s] Observation start time (MET)	490053464.184000	490052224.39349	CCD S5 on	N	N
Observation start date	2013-07-12T21:56:37	2013-07-12T21:37:04	Number of optional ACIS chips dropped	0	0
[s] Observation end time (MET)	490068465.184000	490068690.50688	On-chip summing requested	N	N
Observation end date	2013-07-13T02:06:38	2013-07-13T02:11:30	Subarray requested	NONE	NONE
Read mode	TIMED	TIMED	Alternating exposures requested	N	N
			[s] Primary exposure time	0.000000	3.2

2.3 Aspect



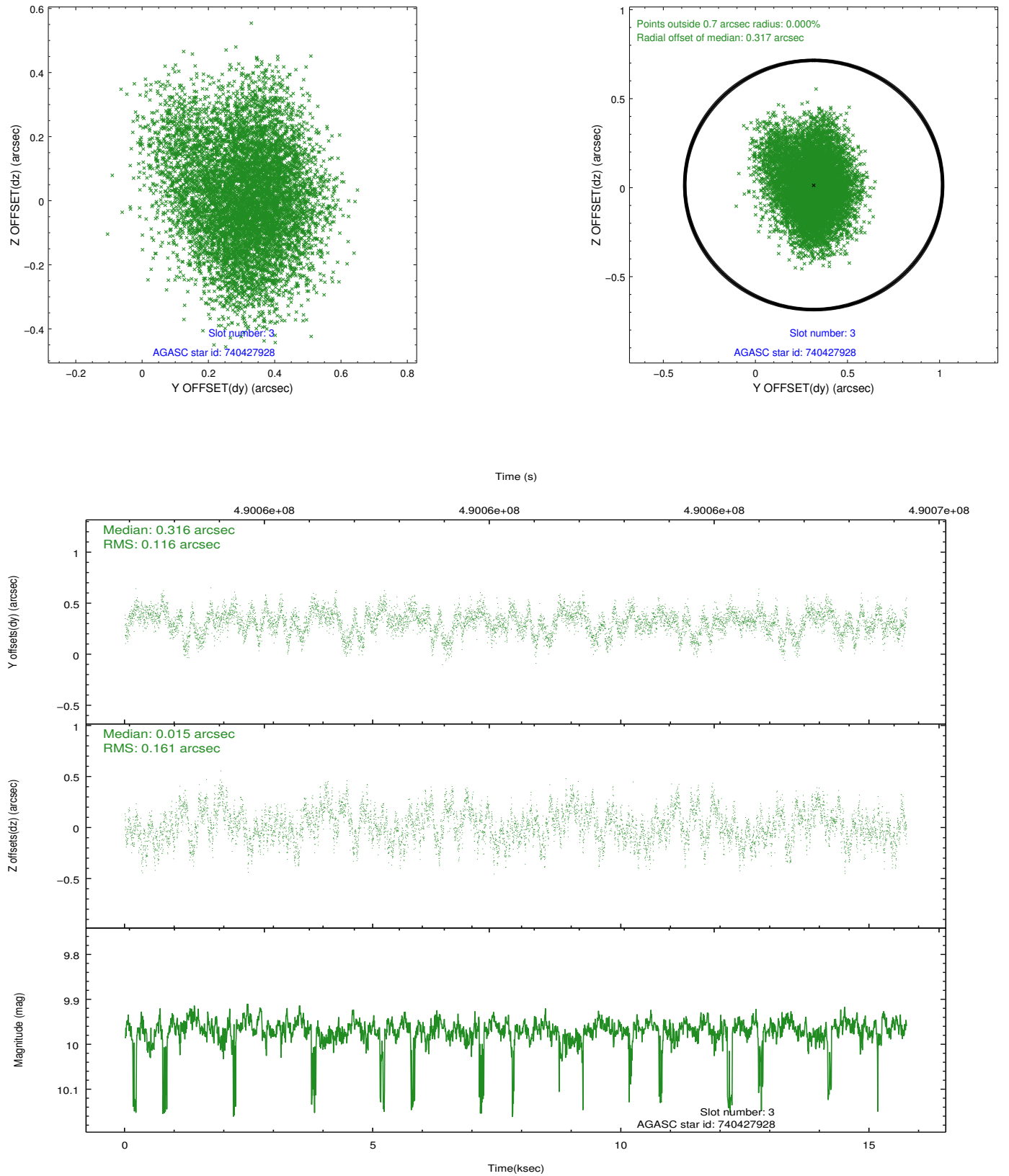


Slot Statistics

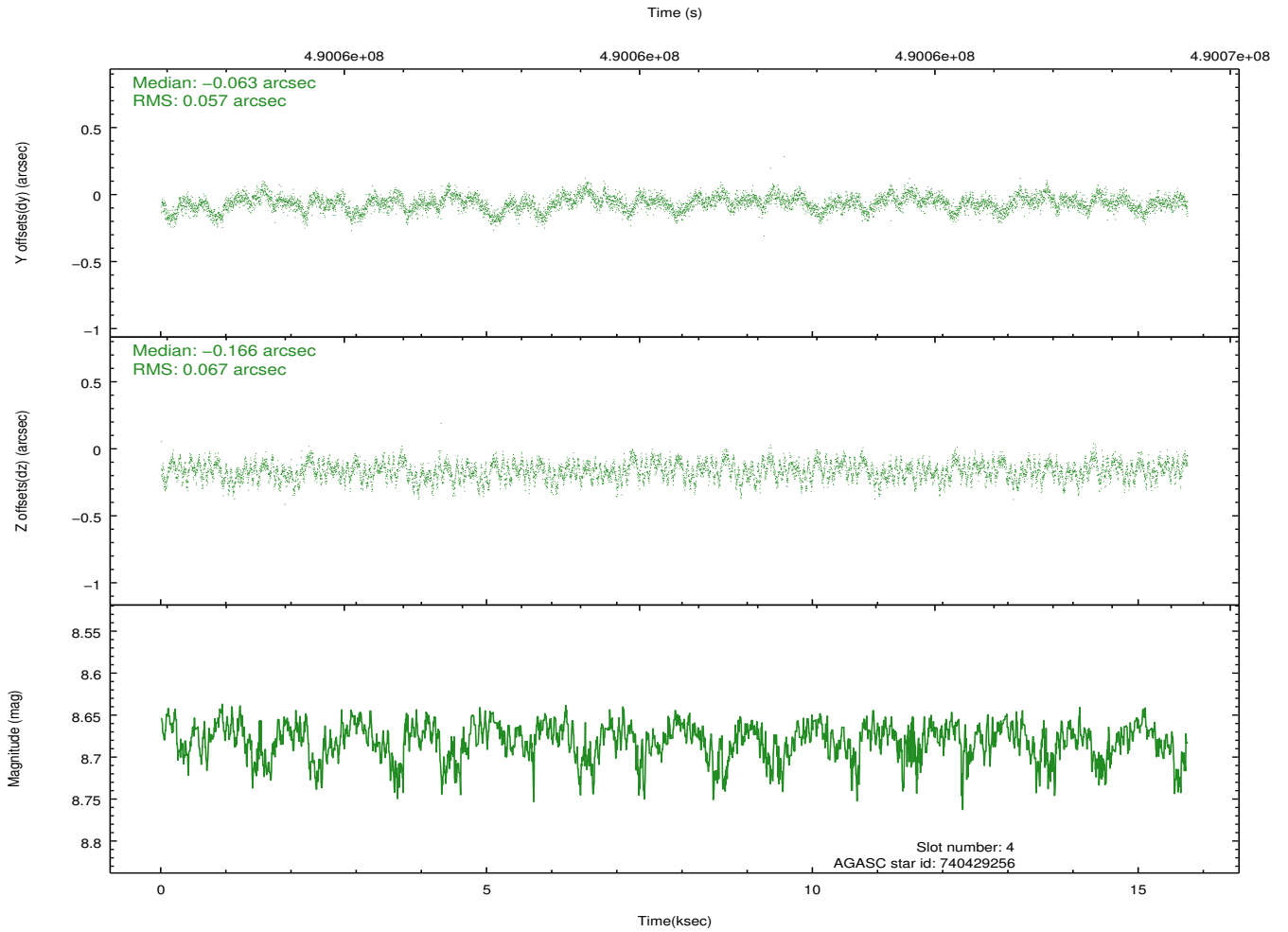
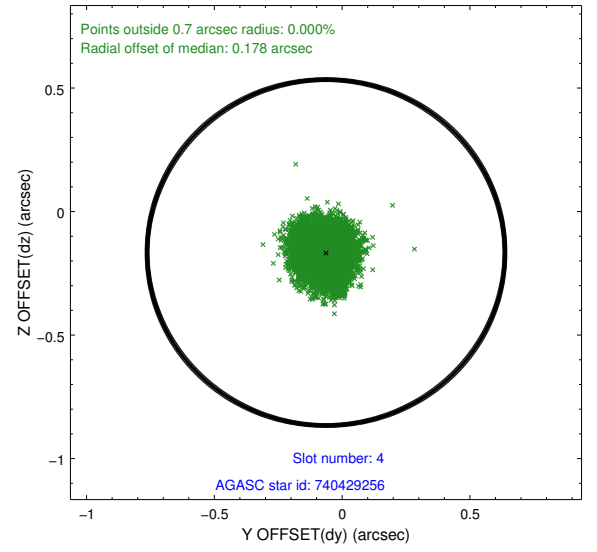
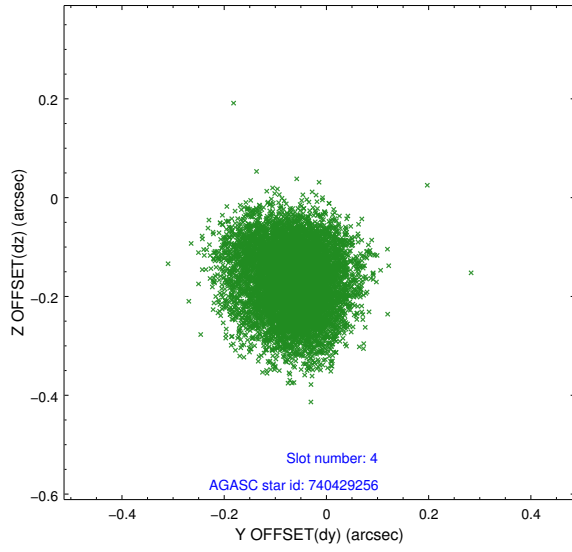
slot	status	used	id	mag	n_pts	med_dy	med_dz	dr1	dr2	ra	dec	mean_y	mean_z
0	FID		ACIS-S-1	7.13	3842	0.048	-0.016	0.018	0.024	0.000000	0.000000	928.18	-1730.84
1	FID		ACIS-S-4	7.13	3842	0.193	-0.007	0.011	0.018	0.000000	0.000000	2145.91	173.03
2	FID		ACIS-S-5	7.16	3842	-0.269	0.036	0.017	0.026	0.000000	0.000000	-1820.63	167.01
3	GUIDE	used	740427928	9.97	7645	0.316	0.015	0.213	0.341	258.791320	-9.876458	-935.12	-1812.15
4	GUIDE	used	740429256	8.68	7668	-0.063	-0.166	0.096	0.149	259.363835	-10.850328	1433.13	1472.57
5	GUIDE	used	740431048	8.90	7678	0.130	-0.028	0.083	0.141	259.242171	-10.898929	1768.96	1152.14
6	GUIDE	used	740432680	8.90	7682	-0.267	0.526	0.093	0.147	259.277710	-9.787773	-1933.31	-368.27
7	GUIDE	used	740429616	9.58	7644	-0.102	-0.346	0.119	0.197	259.989877	-10.093920	-1957.42	2386.02

2.4 Star Slots

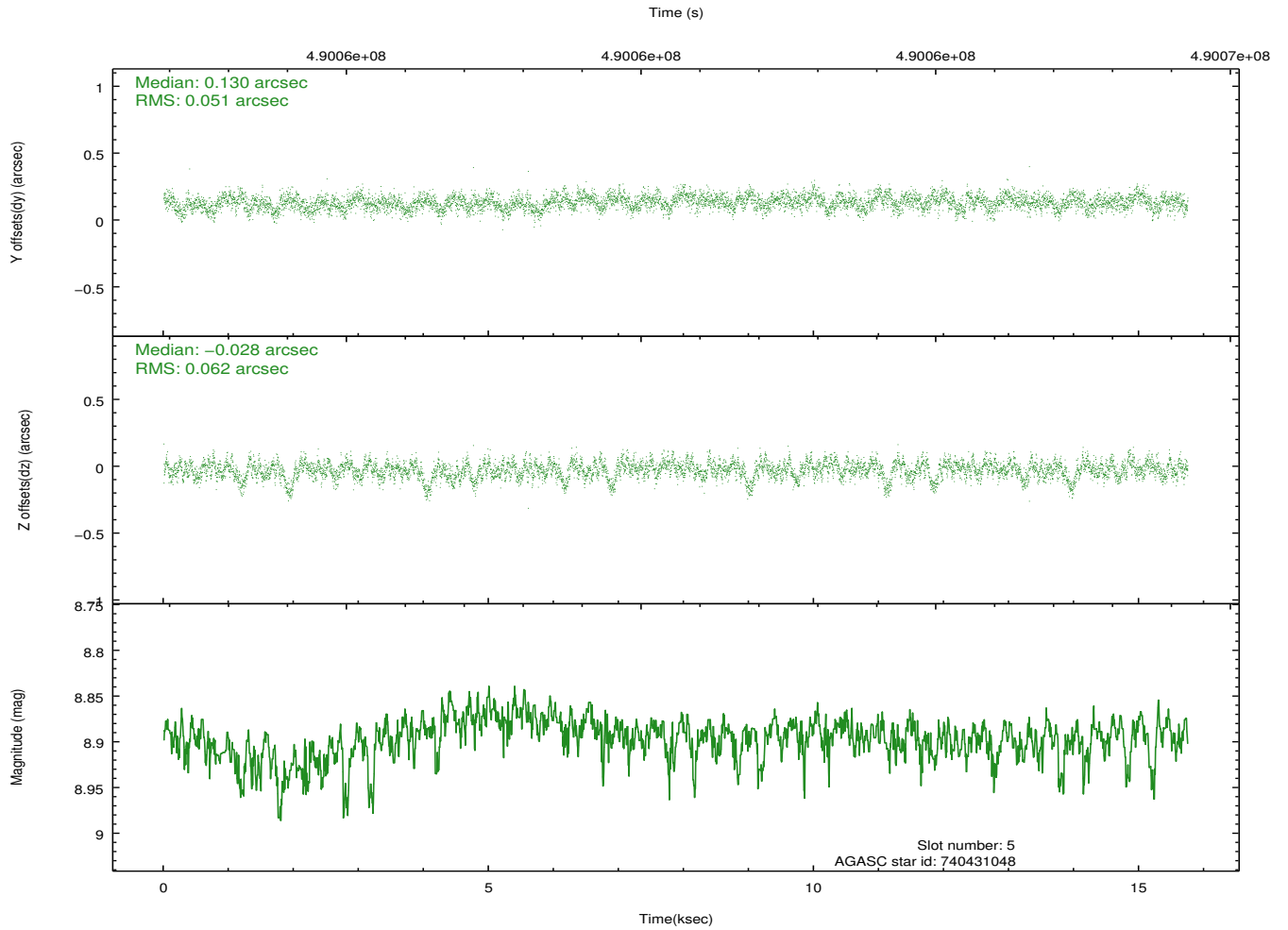
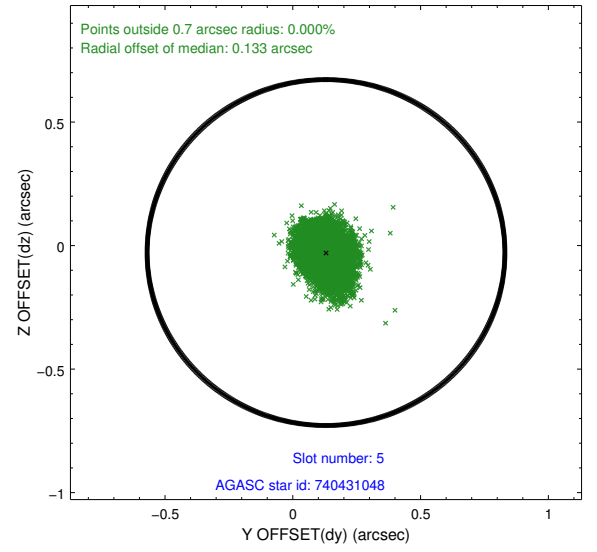
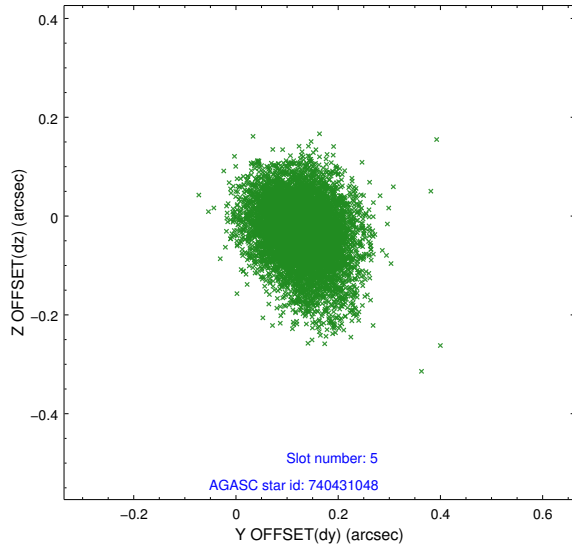
2.4.1 Slot 3



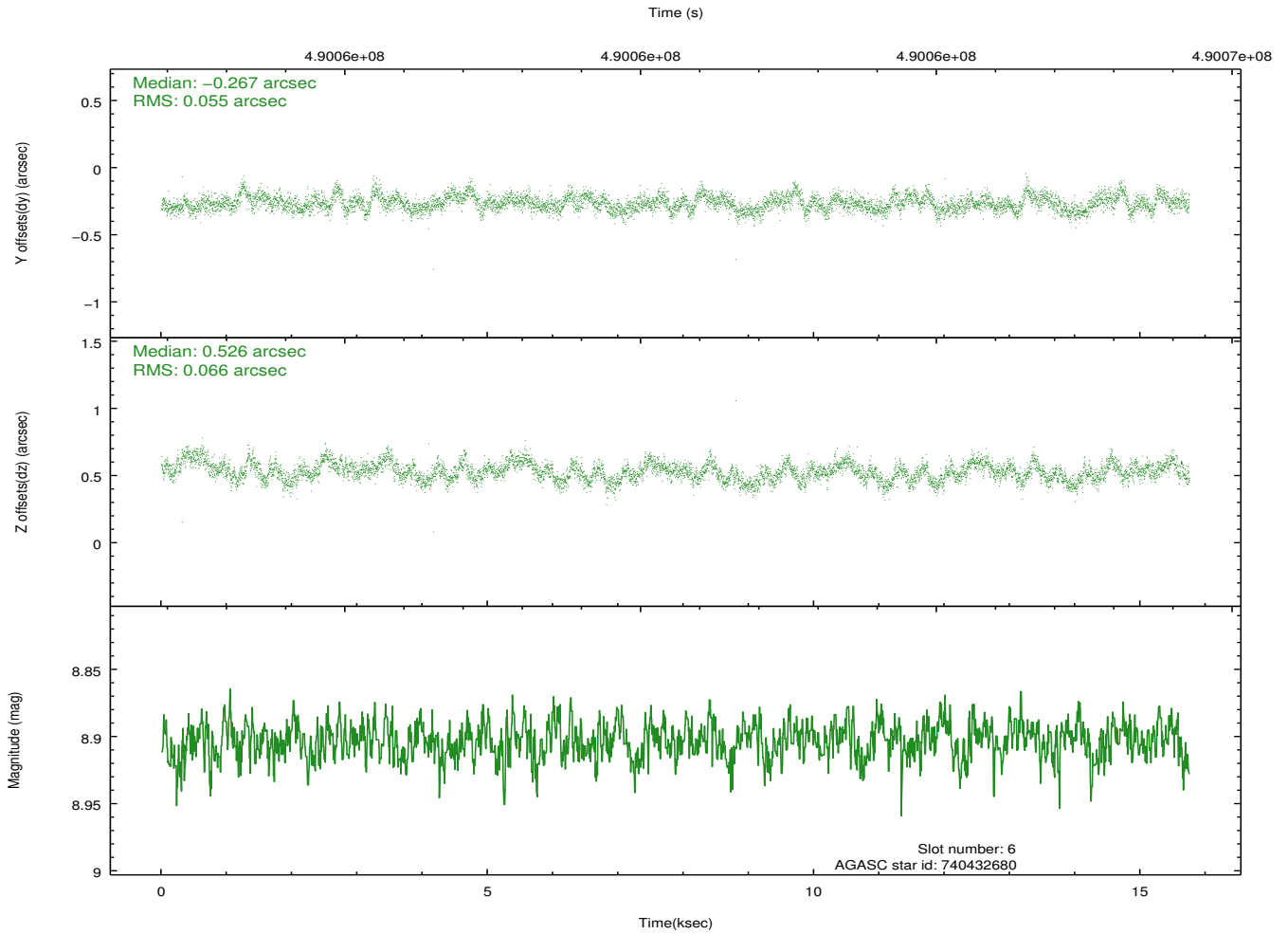
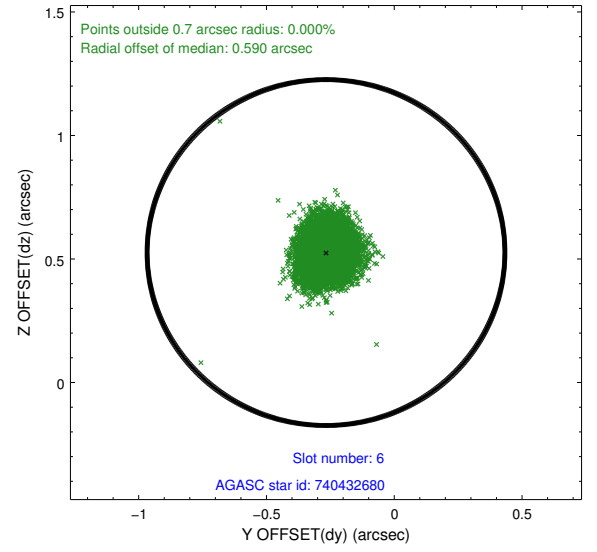
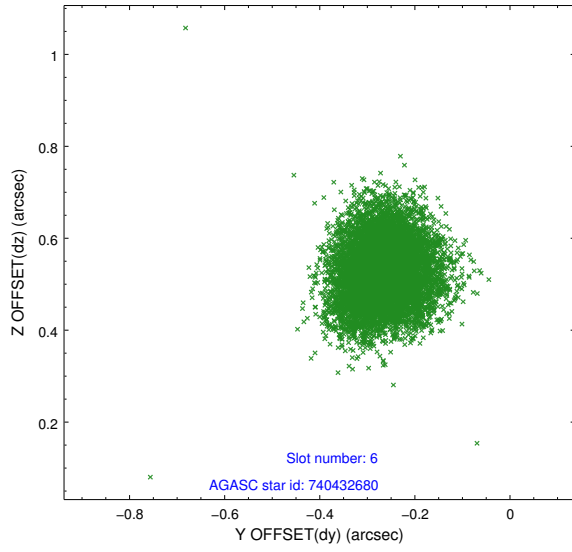
2.4.2 Slot 4



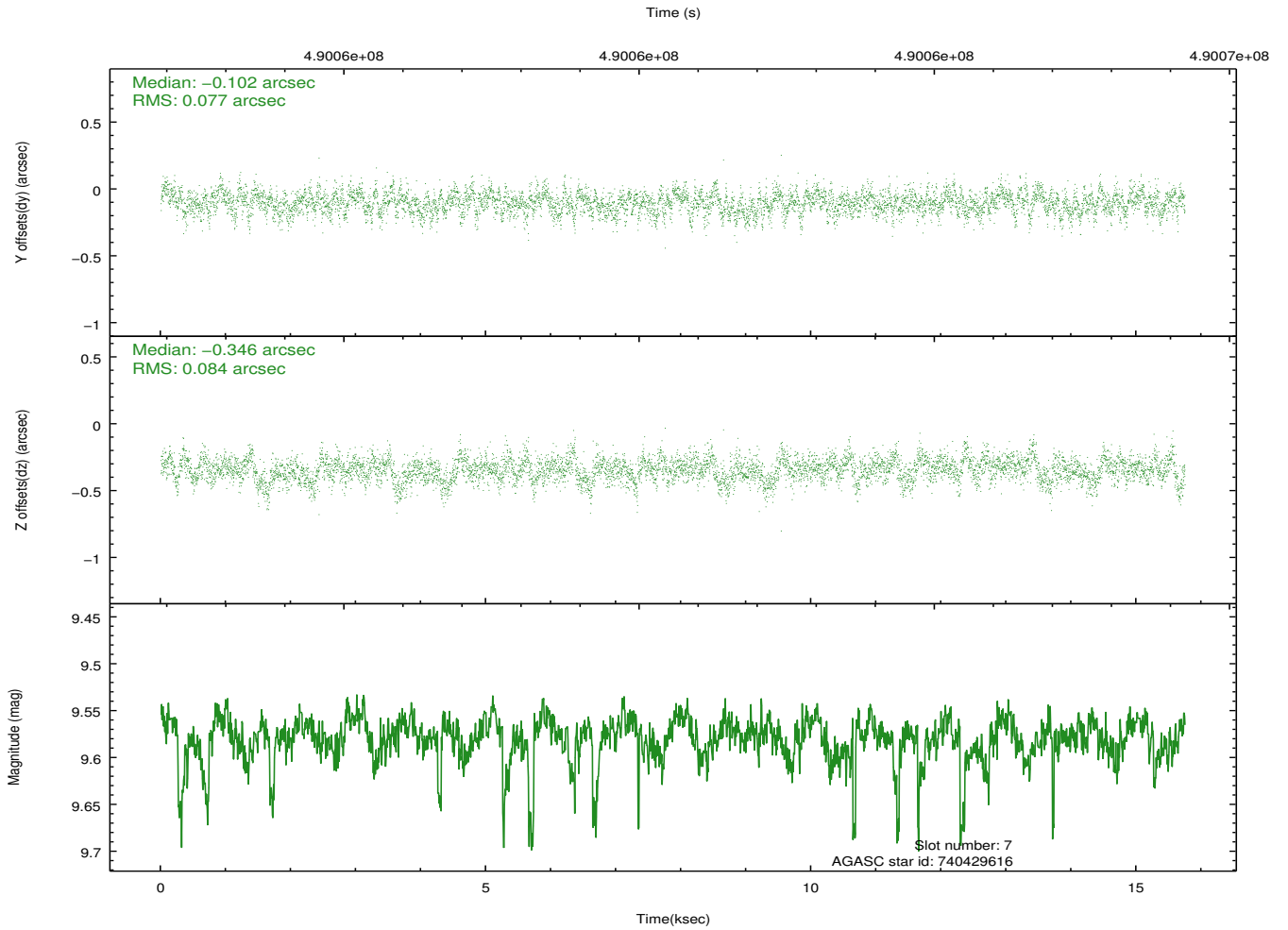
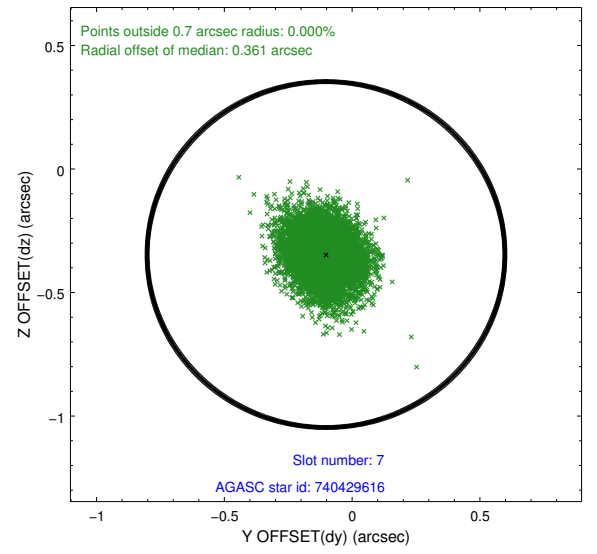
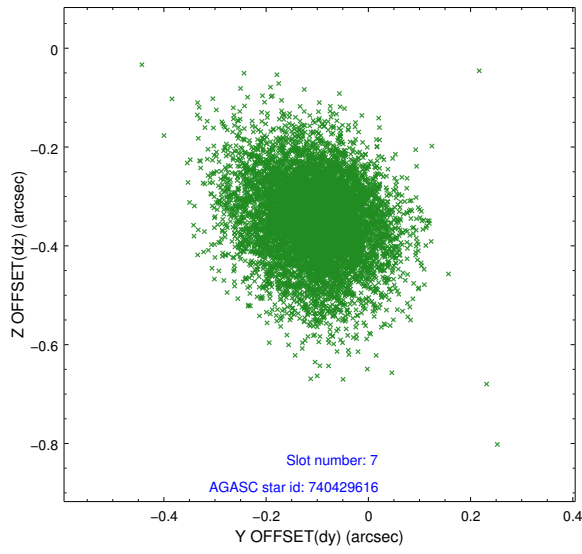
2.4.3 Slot 5



2.4.4 Slot 6

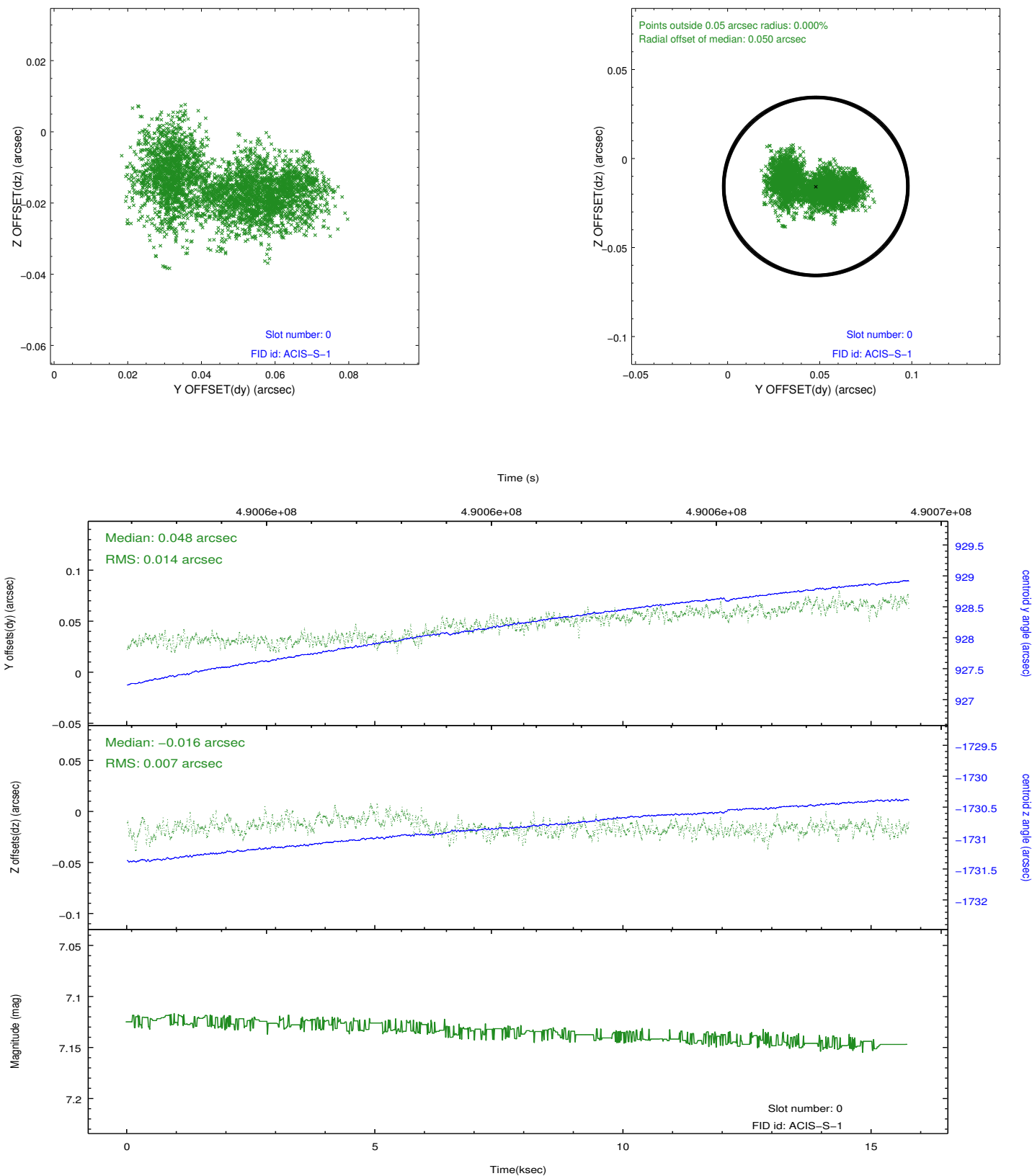


2.4.5 Slot 7

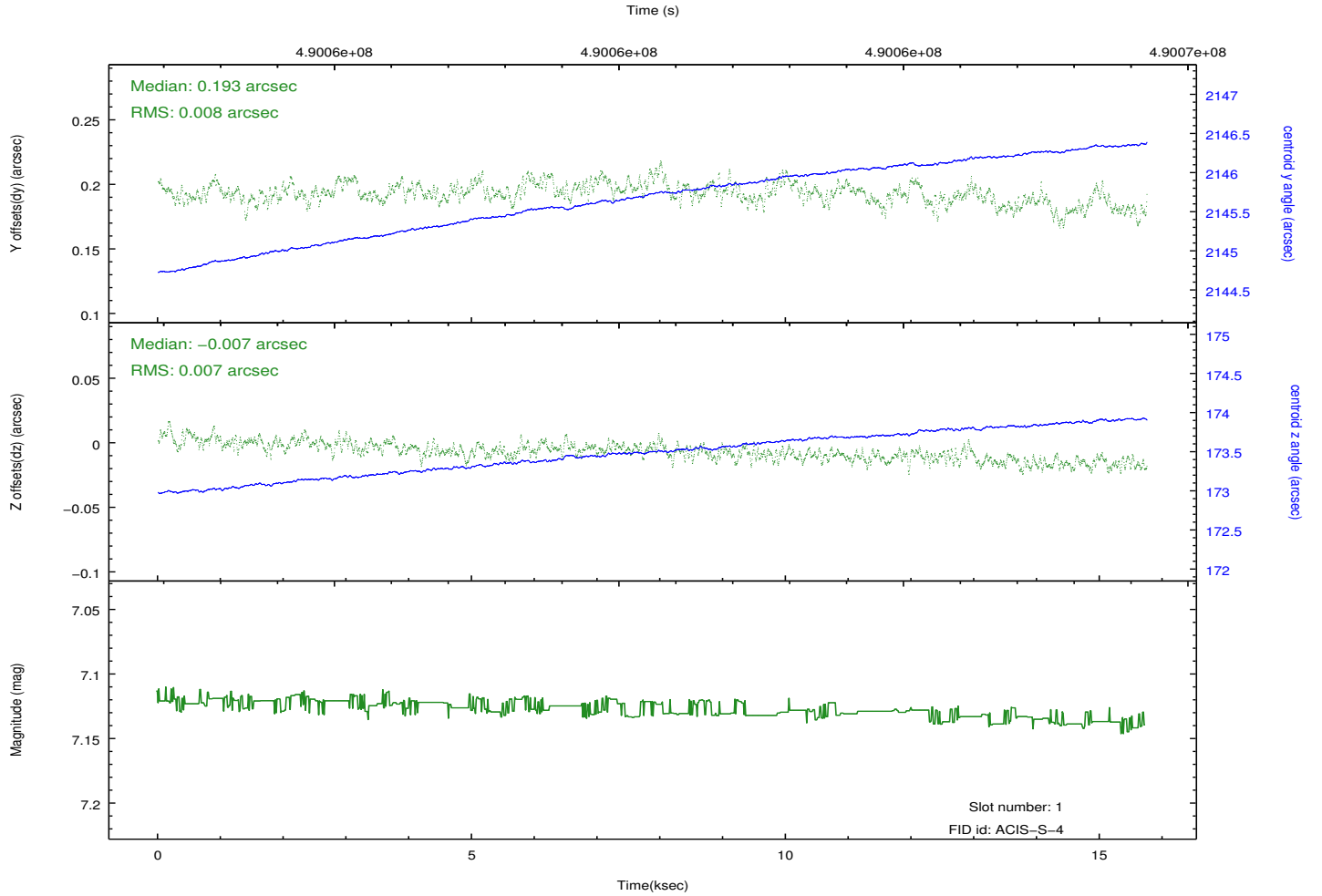
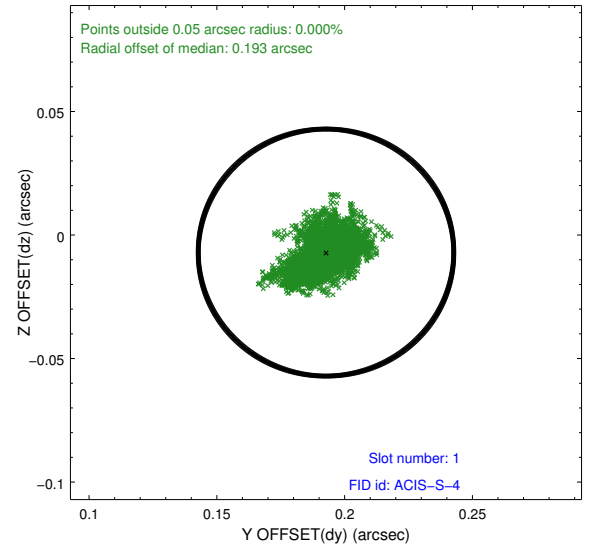
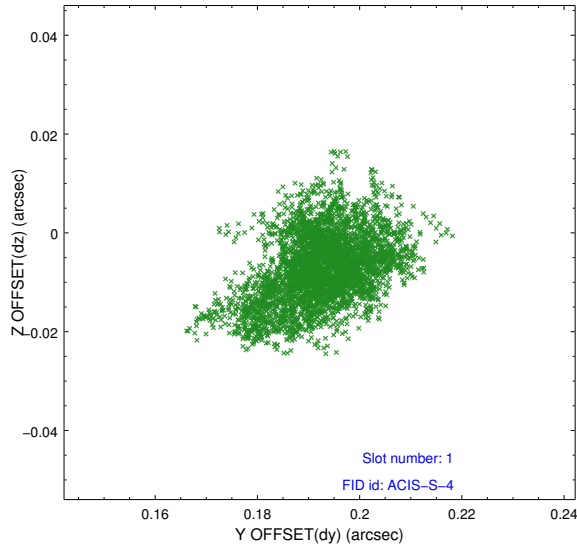


2.5 FID Slots

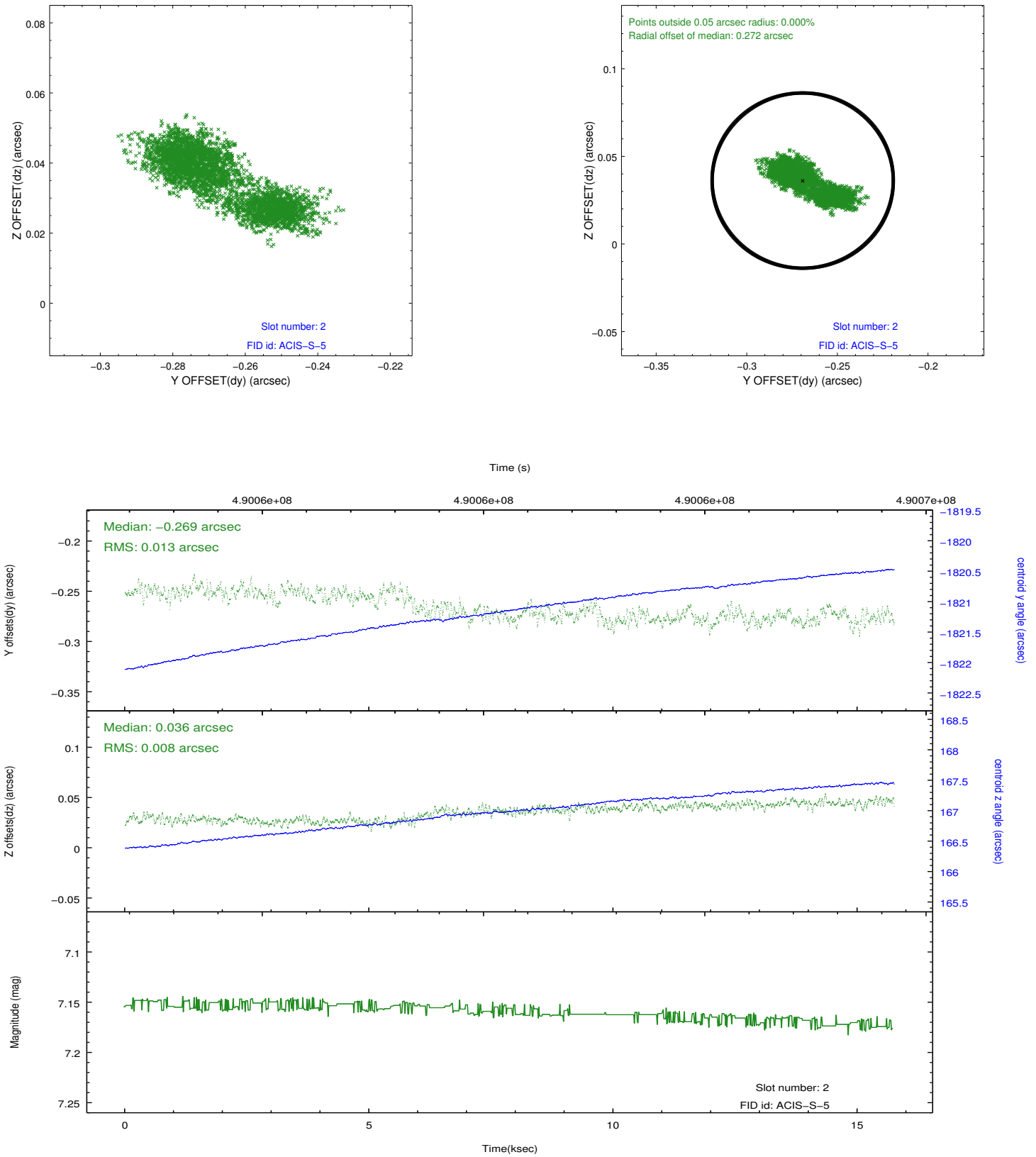
2.5.1 Slot 0



2.5.2 Slot 1



2.5.3 Slot 2



A Summary

A.1 Status

V&V Scientist	Beth Sundheim
V&V Date (YYYY-MM-DD)	2014.12.11
V&V Edition	1
V&V Disposition and Status	OK
V&V Charge Time	14.966399944305

A.2 Comments

These data have been reprocessed with new aspect alignment calibration files that correct small mean offsets (up to 0.4 arcsecs) and improve overall astrometric accuracy. The new calibration was determined using data from the time period being reprocessed and was performed using cross-correlation of X-ray sources with radio and optical counterparts.