

V&V Reference Report

L2 ASCDS Version : 8.4.5

Observation 15036 - L2 Version 3
Chandra X-Ray Center

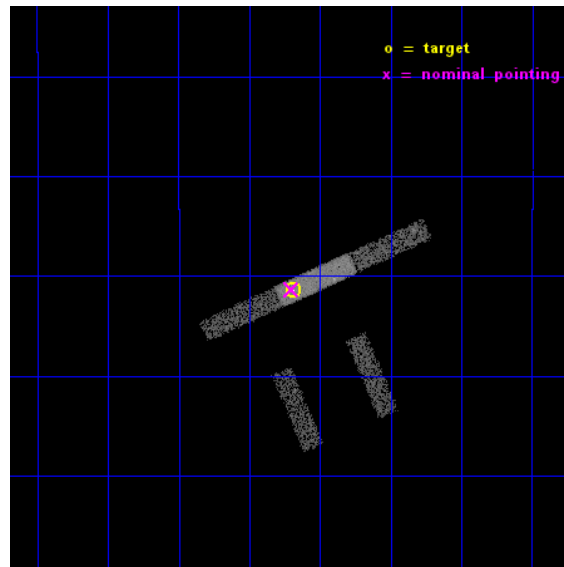
L2 Processing Date : Nov 30 2014

Contents

1	Front	2
2	OBI	3
2.1	OBI	3
2.1.1	Images	3
2.1.2	Bias	3
2.1.3	Parameters	4
2.1.4	Events	4
2.2	Compared Parameters	5
2.3	Aspect	6
2.4	Star Slots	9
2.4.1	Slot 3	9
2.4.2	Slot 4	10
2.4.3	Slot 5	11
2.4.4	Slot 6	12
2.5	FID Slots	13
2.5.1	Slot 0	13
2.5.2	Slot 1	14
2.5.3	Slot 2	15
A	Summary	16
A.1	Status	16
A.2	Comments	16

1 Front

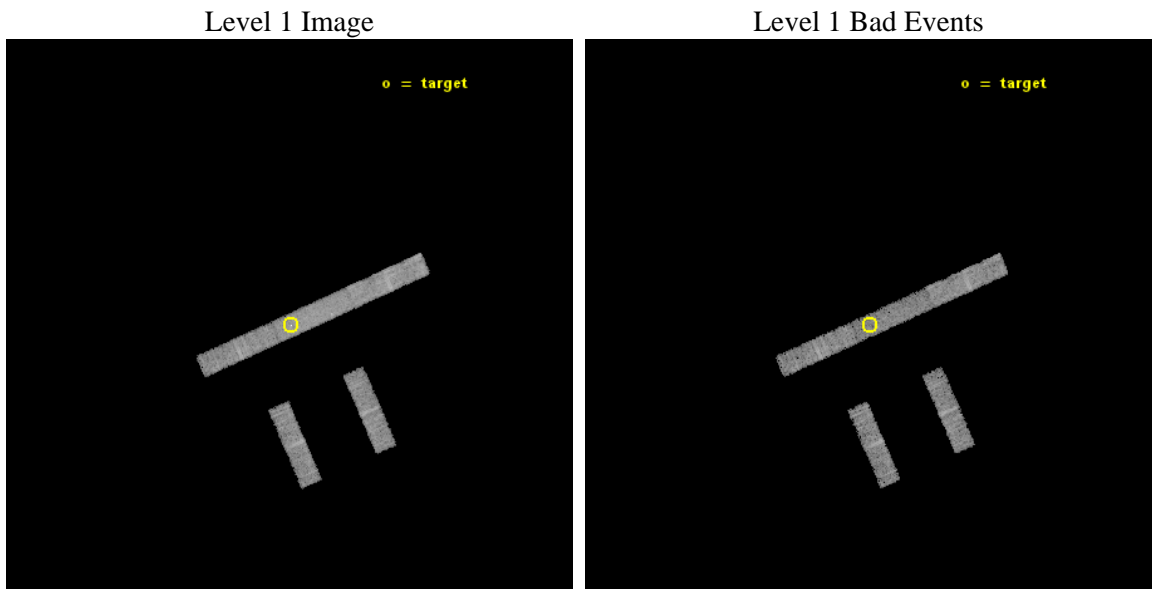
seq_num	702843	Sequence number
obs_id	15036	Observation id
title	Are Double-Peaked Optical Emission Lines Reliable Indicators of Dual AGNs?	Proposal title
observer	Dr. Claire Max	Principal investigator
object	SDSS J020011.52-093126.1	Source name
dtcycle	0	
cycle	P	events from which exps? Prim/Second/Both
ra_targ	30.047917	Observer's specified target RA [deg]
dec_targ	-9.523917	Observer's specified target Dec [deg]
ra_nom	30.050509776543	Nominal RA [deg]
dec_nom	-9.522245327659	Nominal Dec [deg]
roll_nom	336.15705807782	Nominal Roll [deg]
revision	3	Processing version of data
ontime	10058.787875175	Sum of GTIs [s]
livetime	9662.2491692687	Livetime [s]
ontime2	10057.582674921	Sum of GTIs [s]
ontime3	10058.705795169	Sum of GTIs [s]
ontime6	10058.746835172	Sum of GTIs [s]
ontime7	10058.787875175	Sum of GTIs [s]
ontime8	10058.664755166	Sum of GTIs [s]
l2events	15455	Number of level 2 events



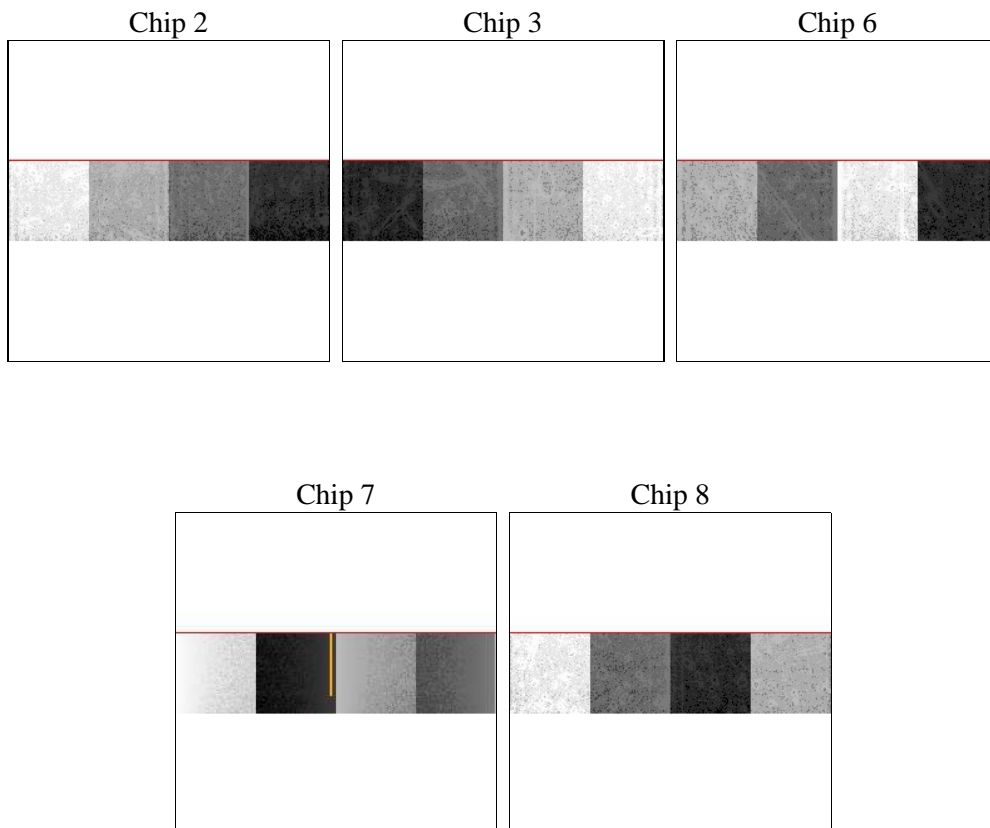
2 OBI

2.1 OBI

2.1.1 Images



2.1.2 Bias



2.1.3 Parameters

obi_num	0	Obi number	sched_exp_time	10000.000000	[s] Scheduled observation exposure time
ascdsver	10.3	Processing system revision	ontime	10058.787875175	Sum of GTIs [s]
caldsver	4.6.4	 	ontime2	10057.582674921	Sum of GTIs [s]
date	2014-11-30T23:46:37	Date and time of file creation	ontime3	10058.705795169	Sum of GTIs [s]
revision	3	Processing version of data	ontime6	10058.746835172	Sum of GTIs [s]
			ontime7	10058.787875175	Sum of GTIs [s]
			ontime8	10058.664755166	Sum of GTIs [s]
			l1events	86481	Number of level 1 events

2.1.4 Events

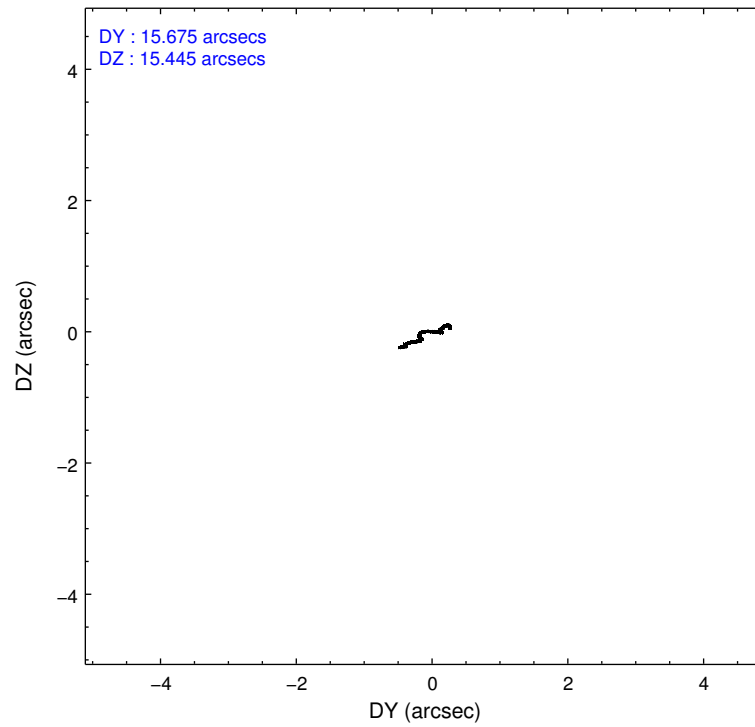
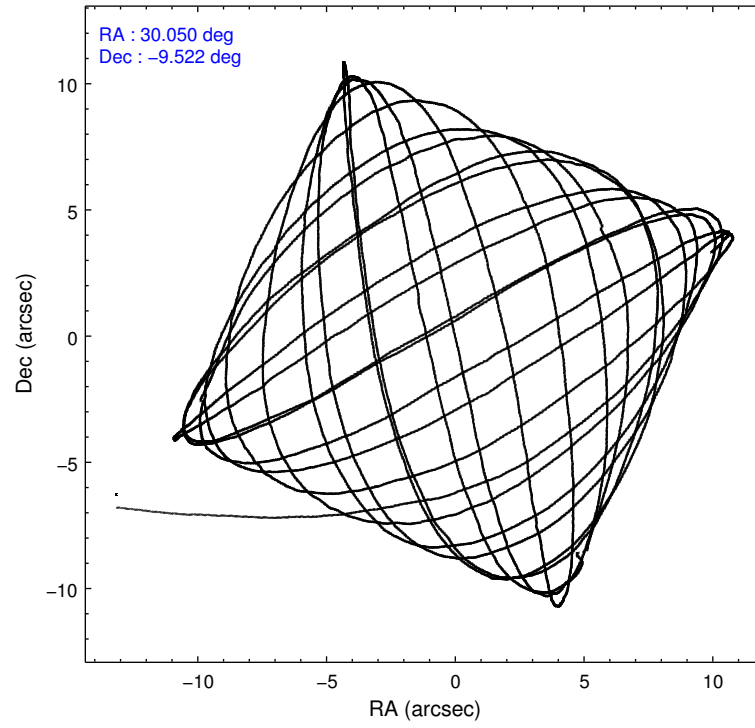
	ccd 2	ccd 3	ccd 6	ccd 7	ccd 8
level 1 events	14451	14516	15552	20291	21671
rejected events	12739	12792	13714	10757	16389
rejected %	88%	88%	88%	53%	75%

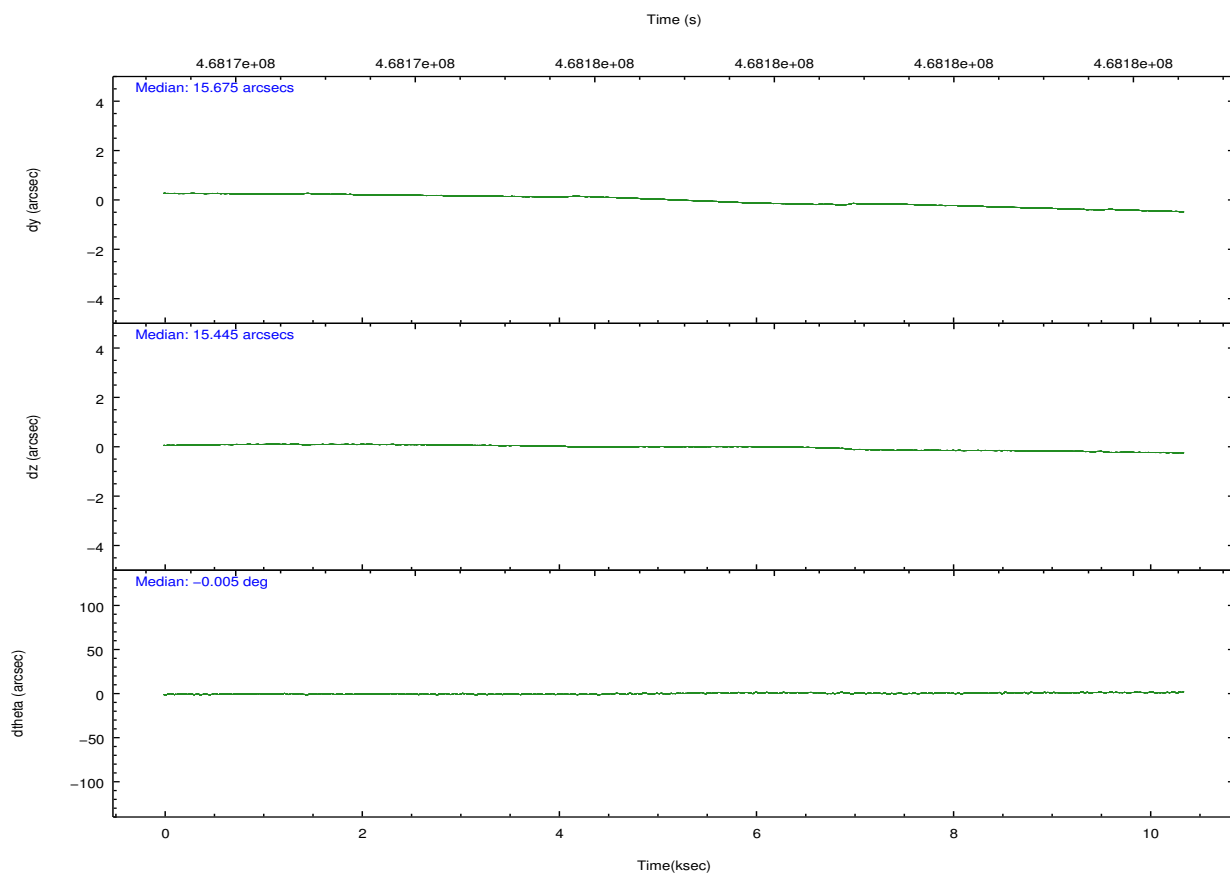
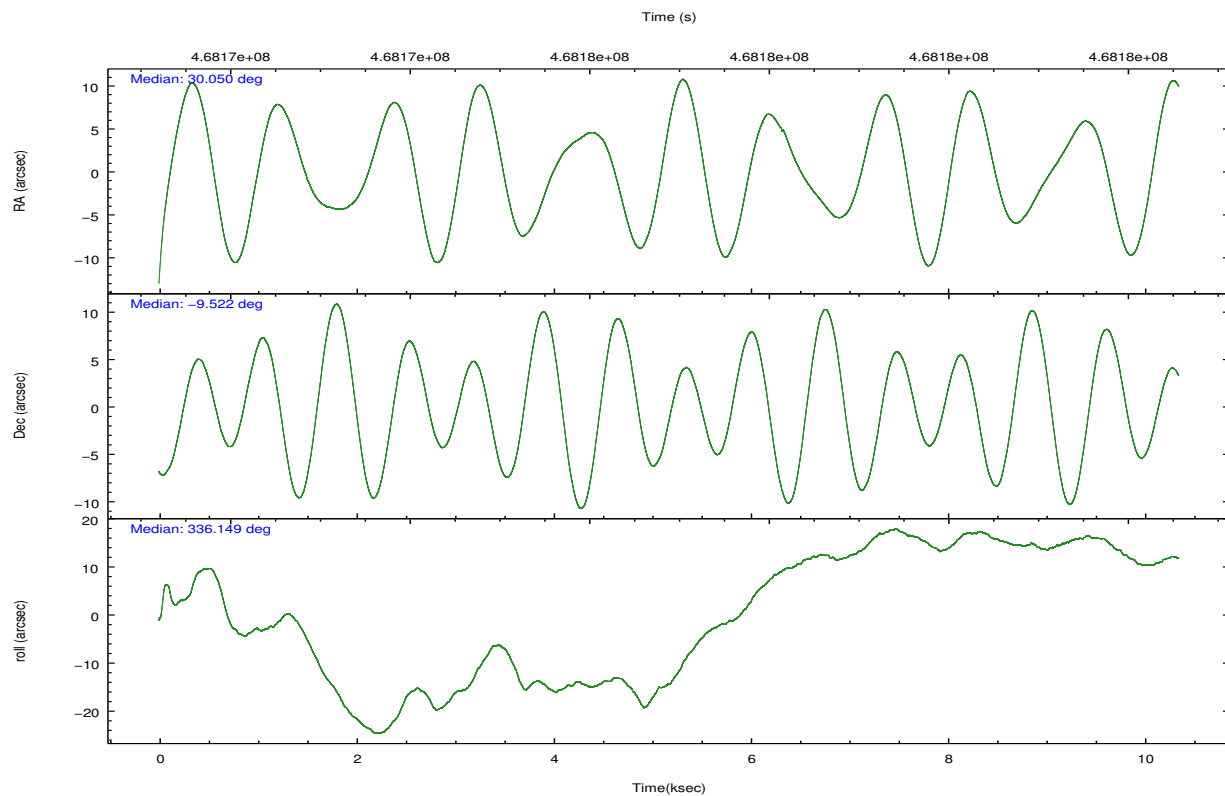
	ccd 2	ccd 3	ccd 6	ccd 7	ccd 8
grade 0 events	514	526	556	1090	1438
	3%	3%	3%	5%	6%
grade 1 events	6	11	5	40	8
	0%	0%	0%	0%	0%
grade 2 events	355	345	353	2017	1206
	2%	2%	2%	9%	5%
grade 3 events	260	274	279	987	574
	1%	1%	1%	4%	2%
grade 4 events	277	251	261	925	527
	1%	1%	1%	4%	2%
grade 5 events	611	749	720	2037	1017
	4%	5%	4%	10%	4%
grade 6 events	306	328	389	4515	1539
	2%	2%	2%	22%	7%
grade 7 events	12122	12032	12989	8680	15362
	83%	82%	83%	42%	70%

2.2 Compared Parameters

Parameter	Planned	Actual	Parameter	Planned	Actual
Instrument	ACIS	ACIS	Obspar format version number	7	7
Detector	ACIS-23678	ACIS-23678	Obspar file type	PREDICTED	ACTUAL
Grating	NONE	NONE	Obspar update status	NONE	UPDATED
Data mode	VFAINT	VFAINT	CCD I0 on	N	N
Observation mode	POINTING	POINTING	CCD I1 on	N	N
[deg] Pointing RA	30.022953	30.05050977654338	CCD I2 on	O2	Y
[deg] Pointing Dec	-9.525546	-9.52224532765899	CCD I3 on	O3	Y
[deg] Pointing Roll	335.995869	336.1570580778181	CCD S0 on	N	N
[mm] SIM focus pos	-0.684267	-0.6828225247311905	CCD S1 on	N	N
[mm] SIM defocus	0	0.001444936568705701	CCD S2 on	O4	Y
[mm] SIM translation stage pos	-190.132523	-190.1400660498719	CCD S3 on	Y	Y
[mm] SIM translation stage offset	0	0.00754346686406393	CCD S4 on	O1	Y
[s] Observation start time (MET)	468172047.184000	468170605.21067	CCD S5 on	N	N
Observation start date	2012-11-01T15:46:20	2012-11-01T15:23:25	Number of optional ACIS chips dropped	0	0
[s] Observation end time (MET)	468182047.184000	468183146.59884	On-chip summing requested	N	N
Observation end date	2012-11-01T18:33:00	2012-11-01T18:52:26	Subarray requested	CUSTOM	1/4
Read mode	TIMED	TIMED	Subarray start row	385	385
			Subarray row count	256	256
			Alternating exposures requested	N	N
			[s] Primary exposure time	0.000000	1

2.3 Aspect



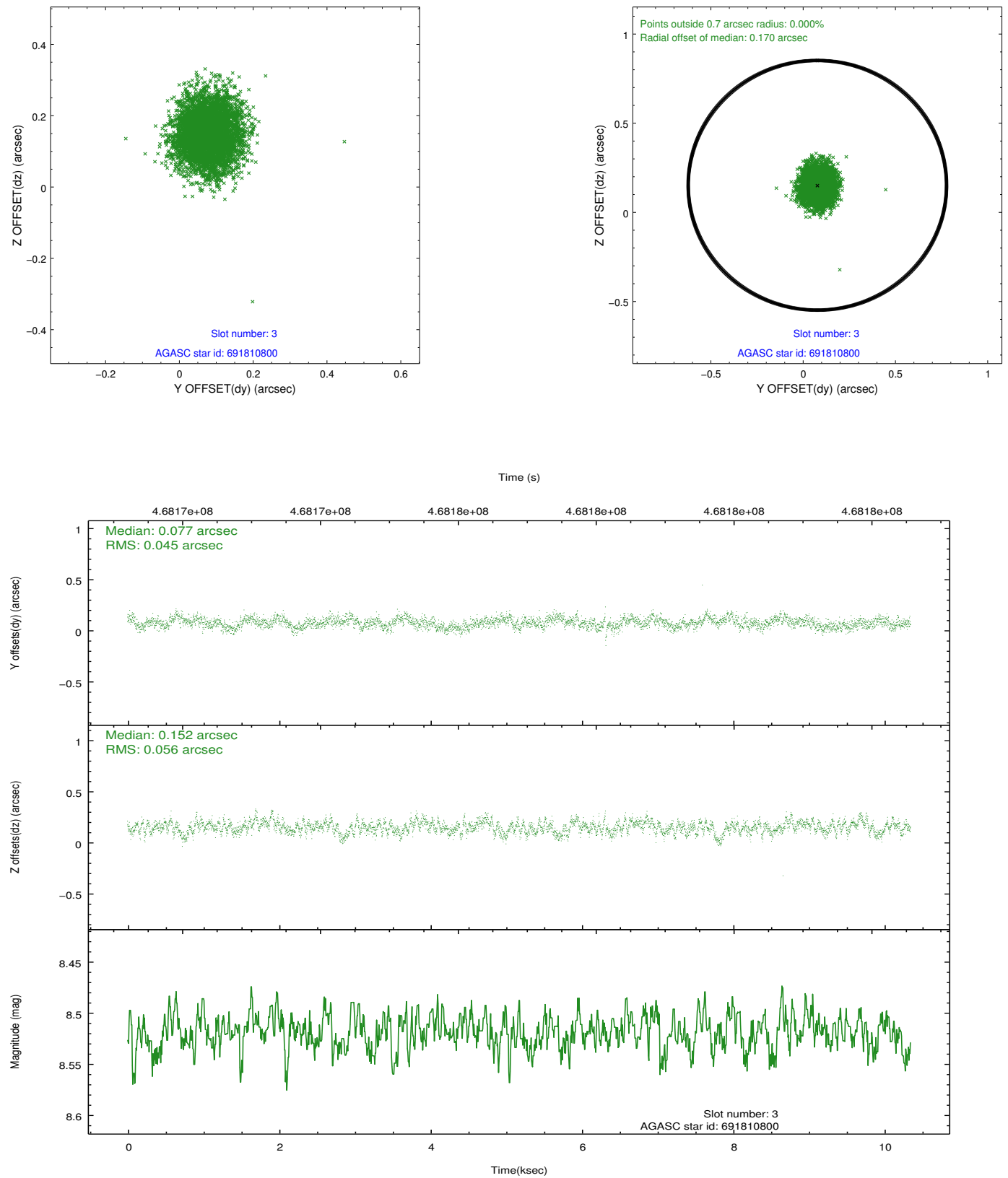


Slot Statistics

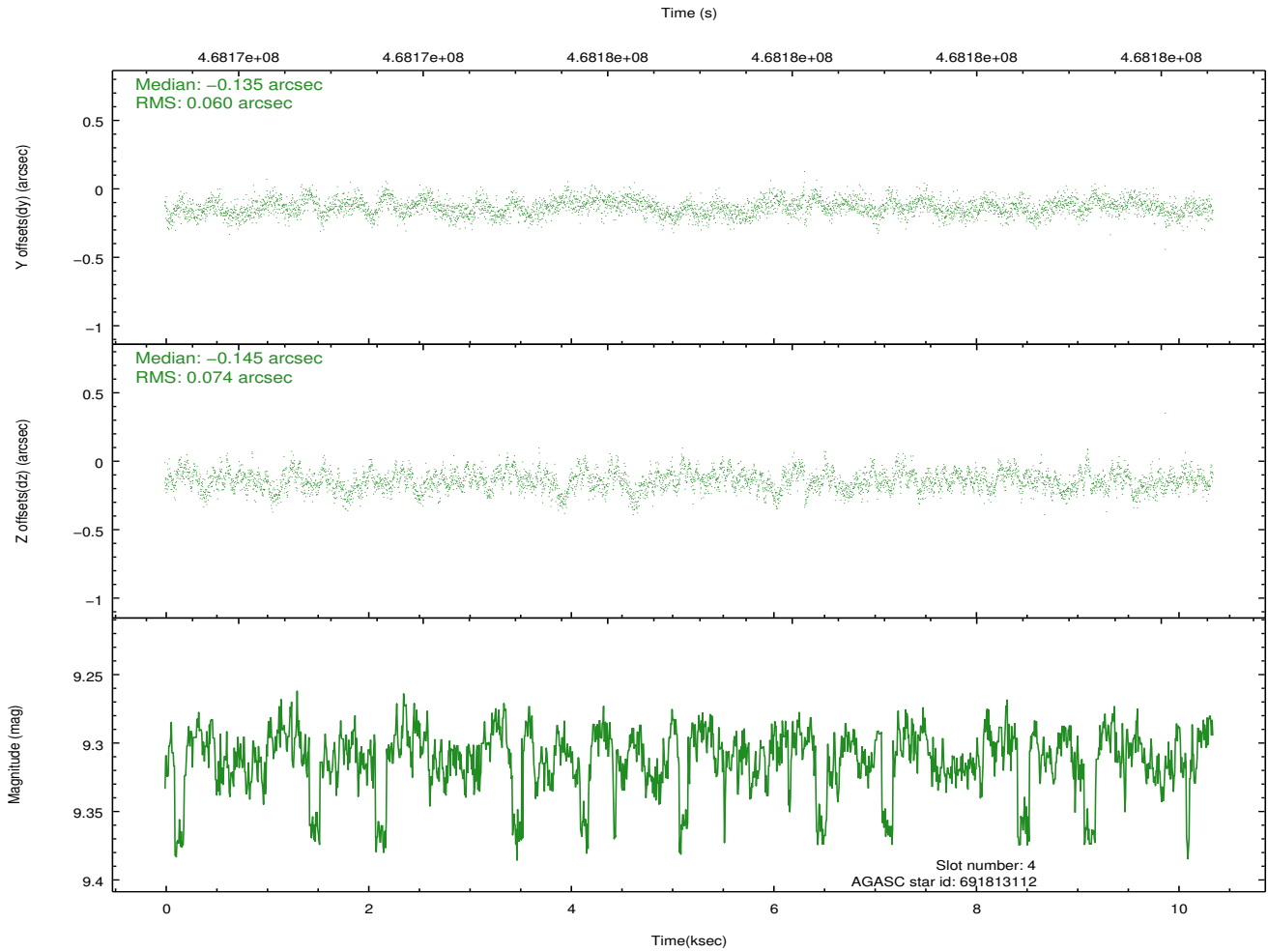
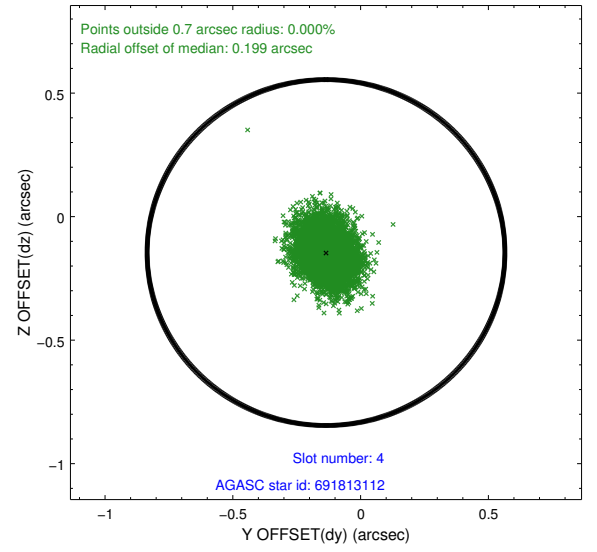
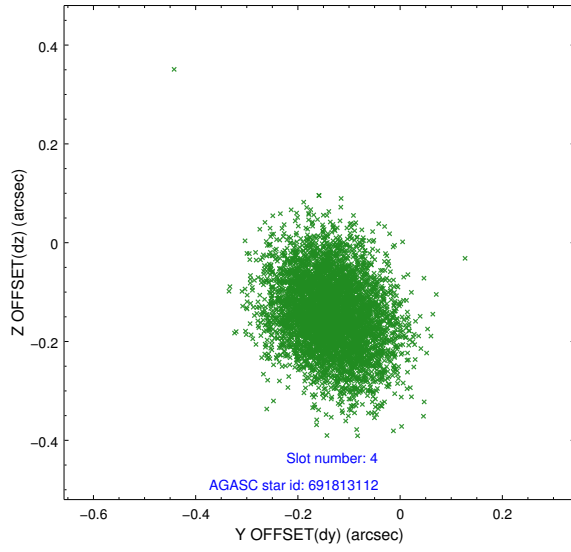
slot	status	used	id	mag	n_pts	med_dy	med_dz	dr1	dr2	ra	dec	mean_y	mean_z
0	FID		ACIS-S-2	6.99	2524	-0.129	-0.010	0.007	0.011	0.000000	0.000000	-768.74	-1736.82
1	FID		ACIS-S-4	7.07	2523	0.246	0.065	0.010	0.017	0.000000	0.000000	2144.66	171.23
2	FID		ACIS-S-5	7.10	2524	-0.149	-0.046	0.009	0.016	0.000000	0.000000	-1820.97	165.34
3	GUIDE	used	691810800	8.52	5049	0.077	0.152	0.076	0.123	29.827543	-9.580078	-552.79	-461.43
4	GUIDE	used	691813112	9.31	5016	-0.135	-0.145	0.101	0.164	30.238018	-9.410054	528.83	690.25
5	GUIDE	used	691816448	8.86	5048	0.015	0.022	0.078	0.126	30.462204	-9.761212	1769.56	-142.92
6	GUIDE	used	691817096	8.31	5048	0.043	-0.029	0.061	0.099	29.769058	-8.981725	-1620.50	1420.83
7	OMITTED			0.00	0	0.000	0.000	0.000	0.000	0.000000	0.000000	0.00	0.00

2.4 Star Slots

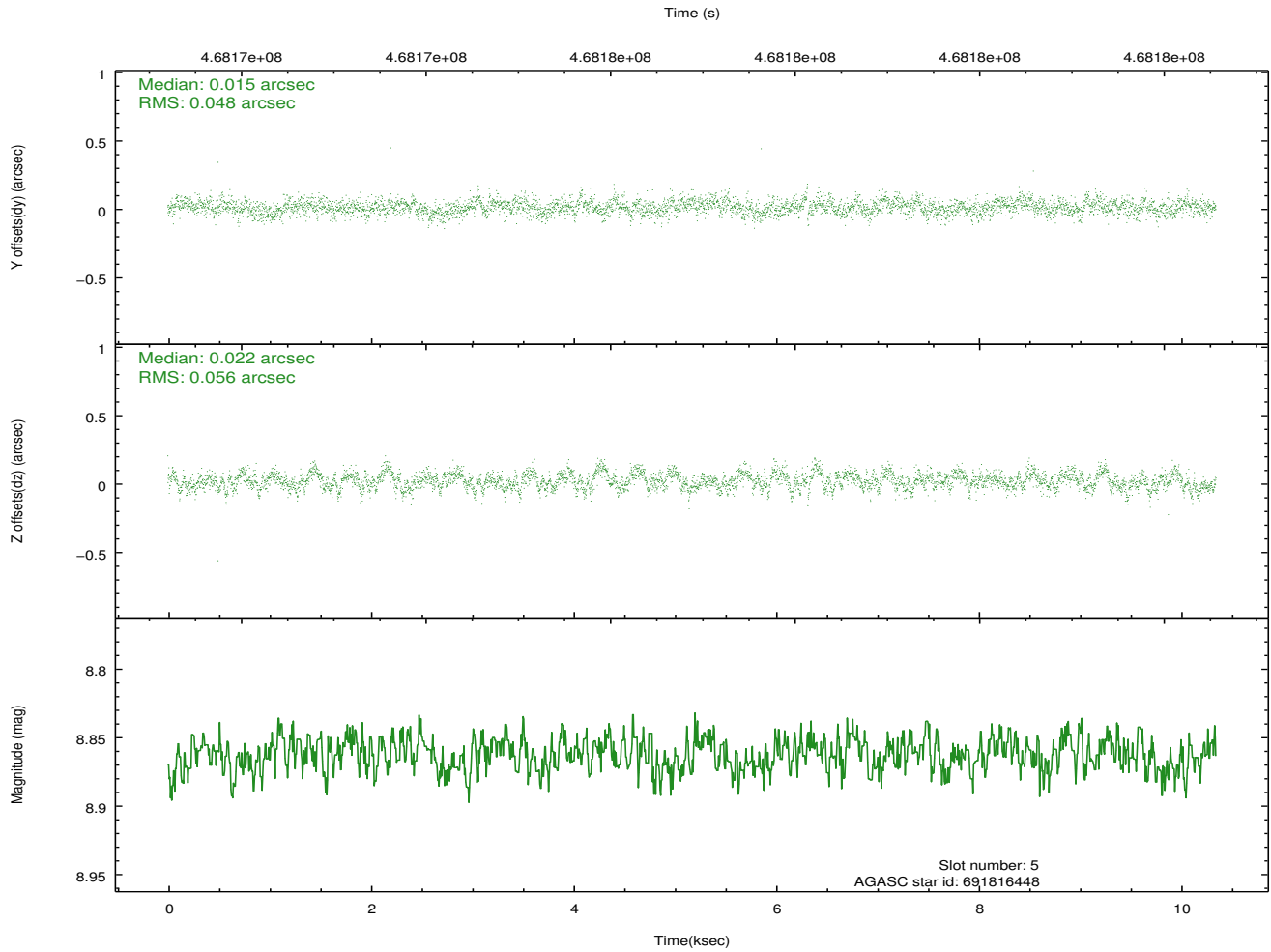
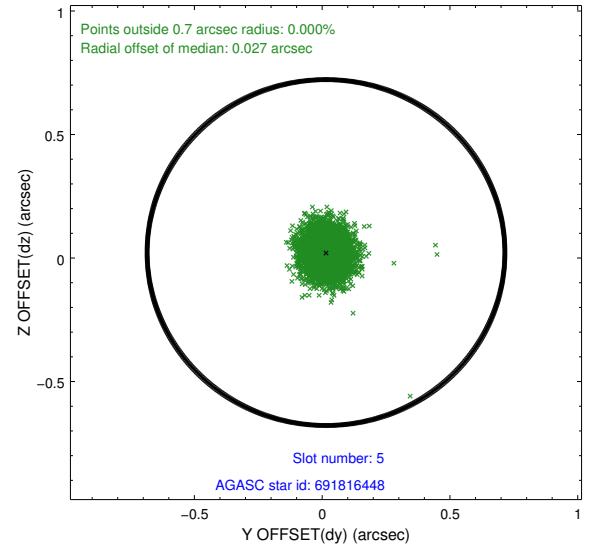
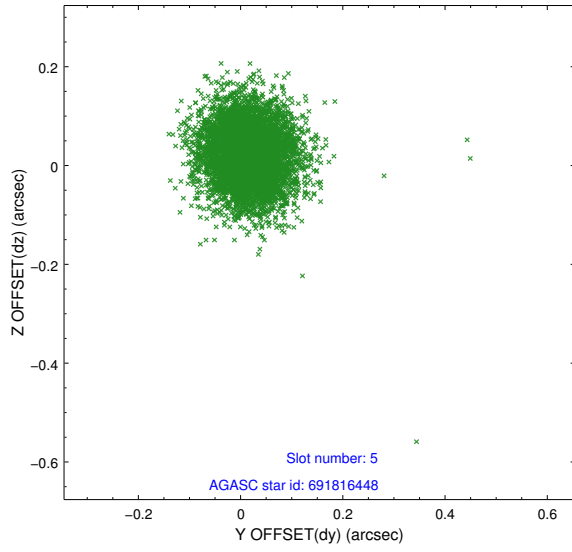
2.4.1 Slot 3



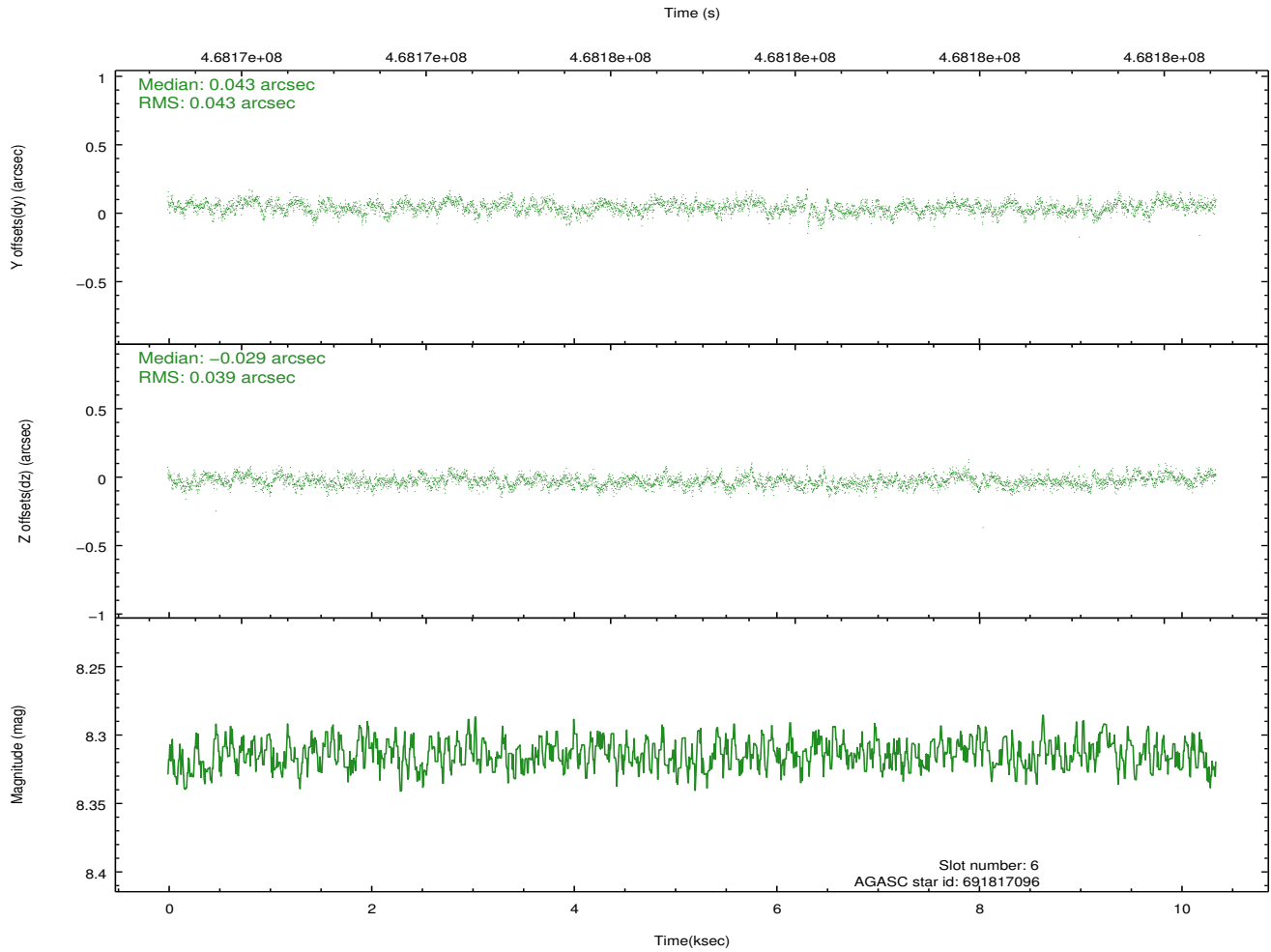
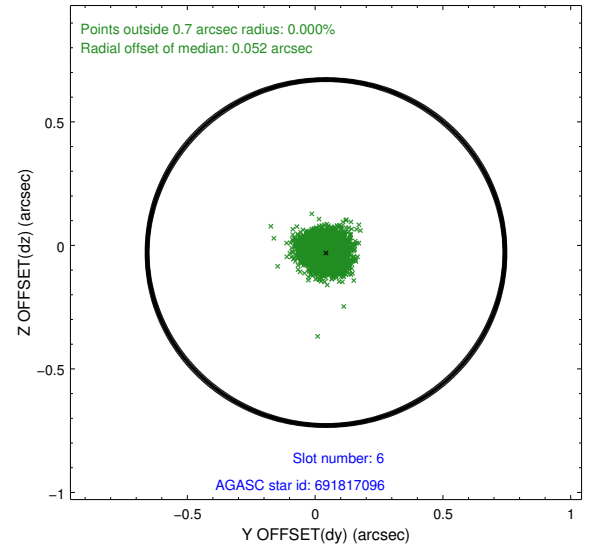
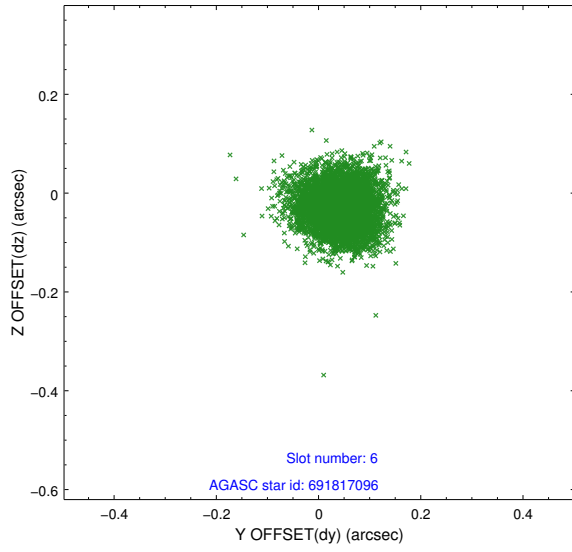
2.4.2 Slot 4



2.4.3 Slot 5

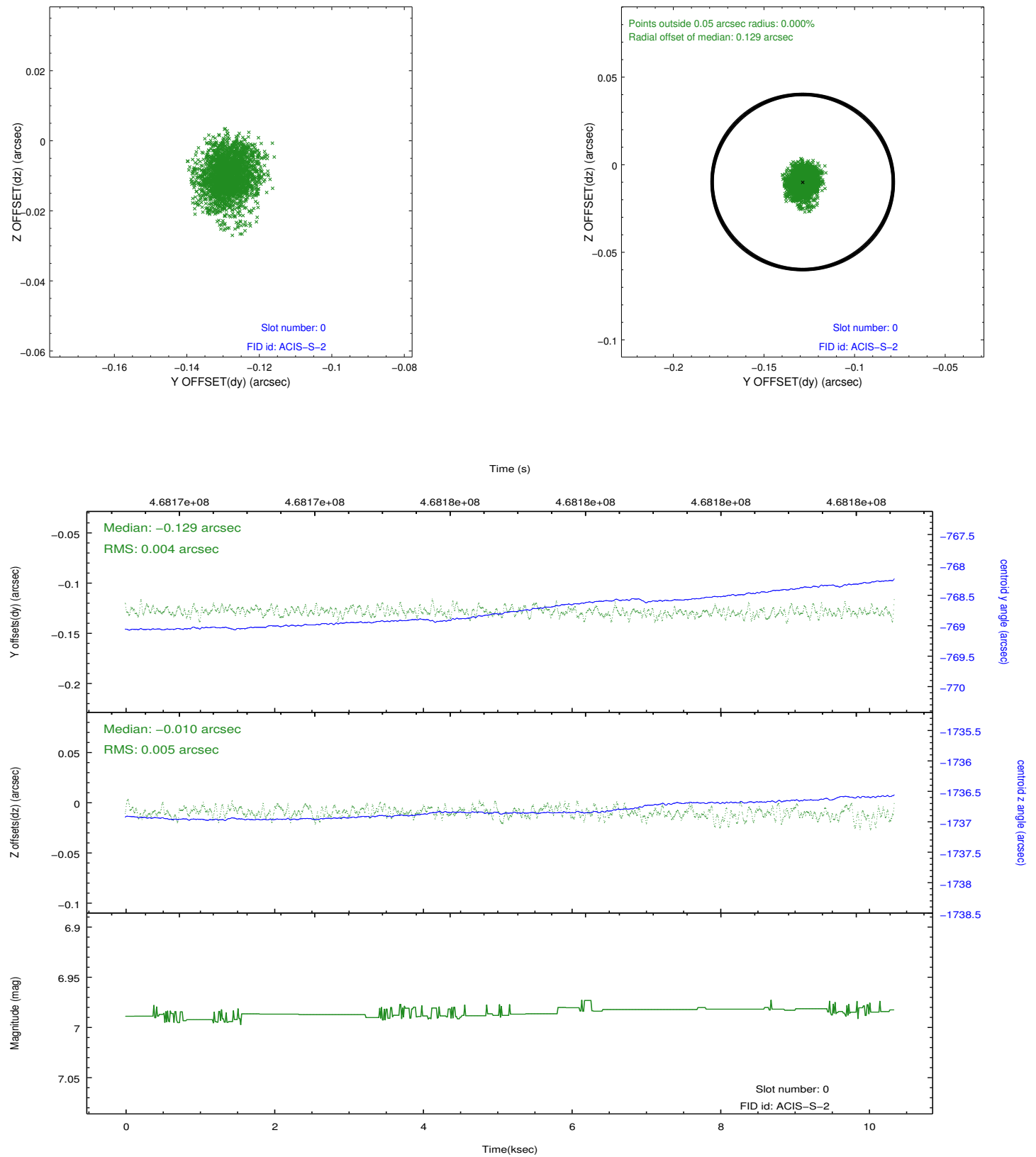


2.4.4 Slot 6

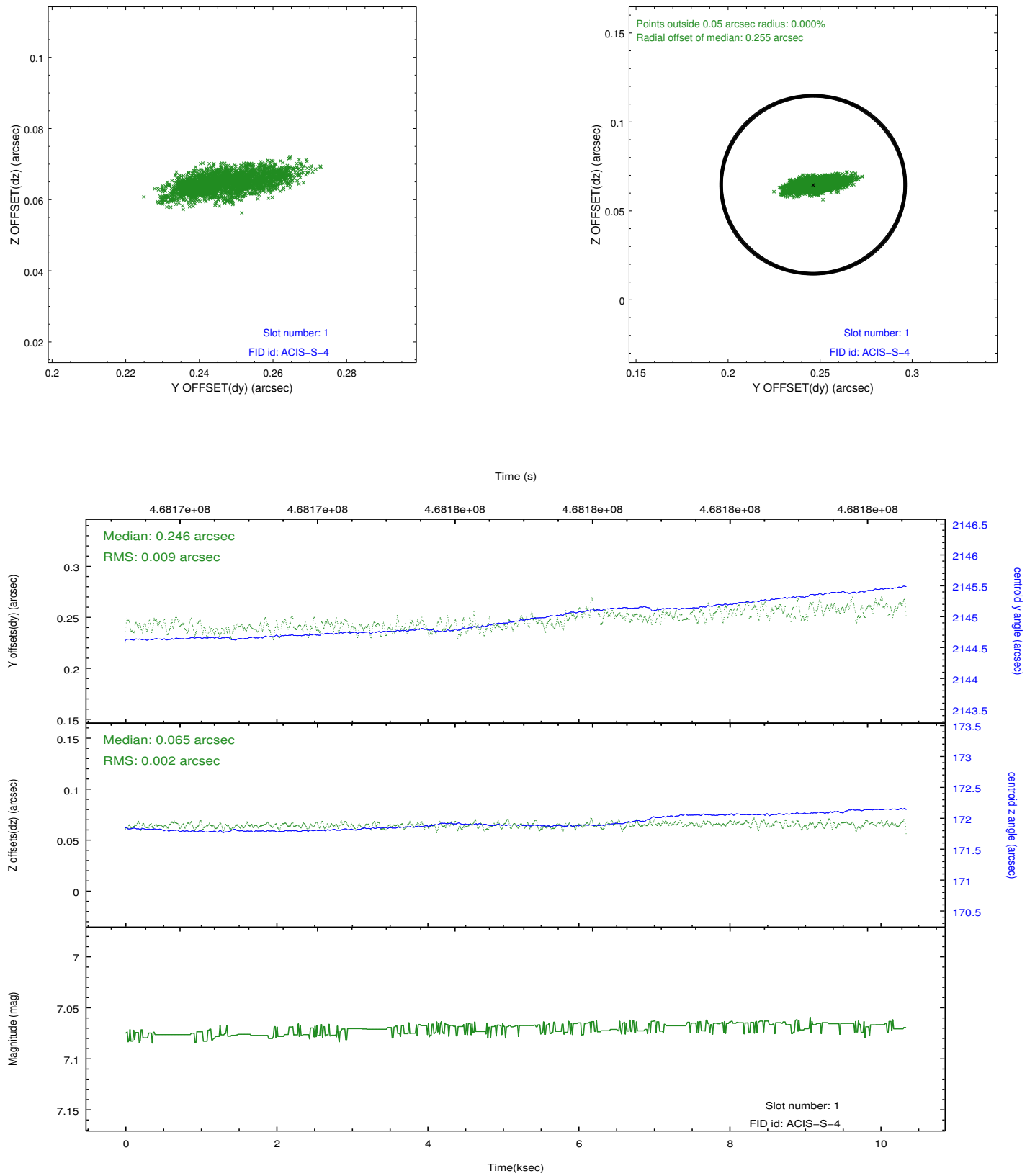


2.5 FID Slots

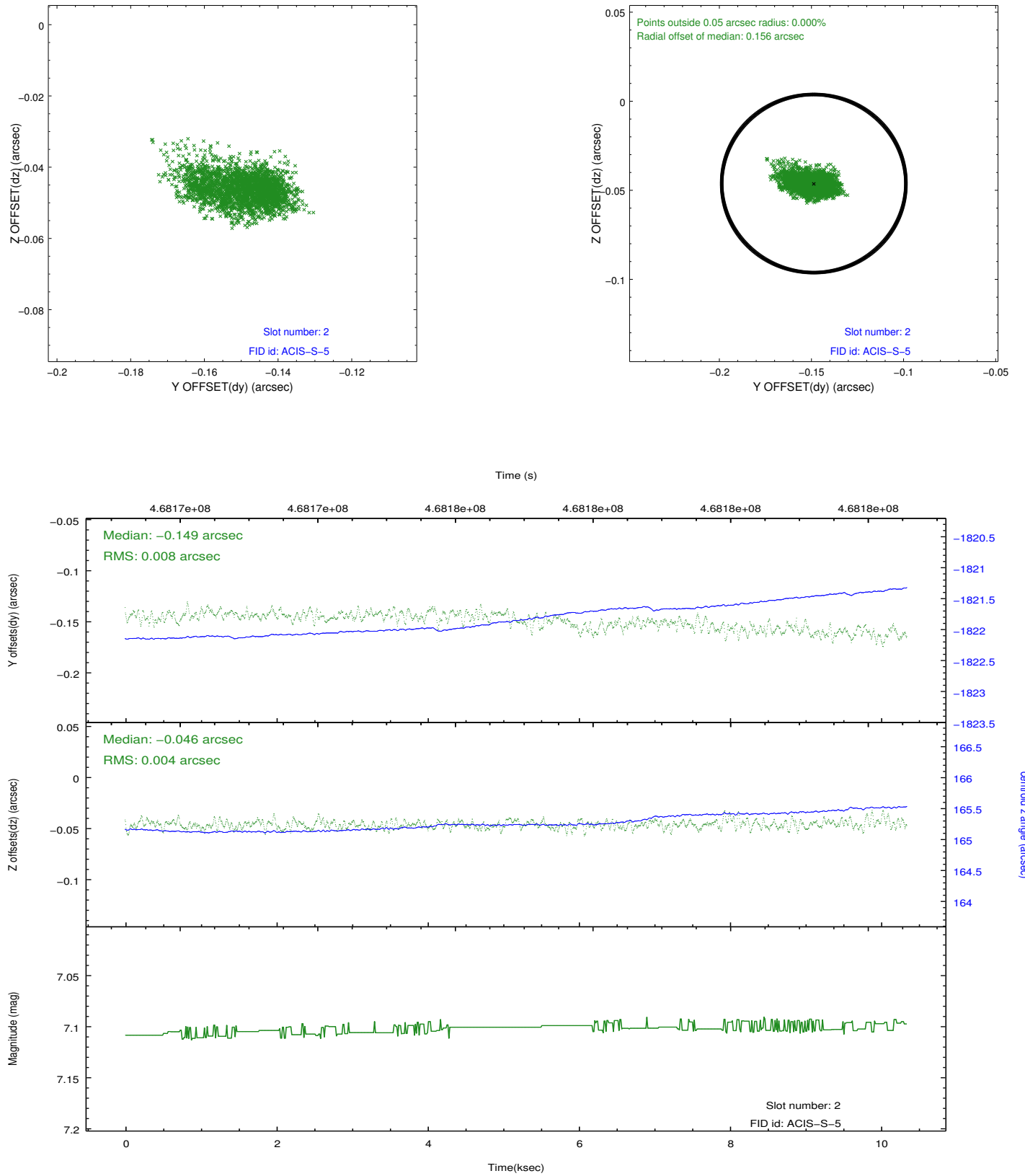
2.5.1 Slot 0



2.5.2 Slot 1



2.5.3 Slot 2



A Summary

A.1 Status

V&V Scientist	Jen Lauer
V&V Date (YYYY-MM-DD)	2014.12.08
V&V Edition	1
V&V Disposition and Status	OK
V&V Charge Time	10.058787875175

A.2 Comments

The guide star in slot 7 was removed from the aspect solution due to poor data quality. The aspect solution is improved by the removal of this guide star from the solution.

=====

These data have been reprocessed with new aspect alignment calibration files that correct small mean offsets (up to 0.4 arcsecs) and improve overall astrometric accuracy. The new calibration was determined using data from the time period being reprocessed and was performed using cross-correlation of X-ray sources with radio and optical counterparts.