

V&V Reference Report

L2 ASCDS Version : 10.1

Observation 15003 - L2 Version 3
Chandra X-Ray Center

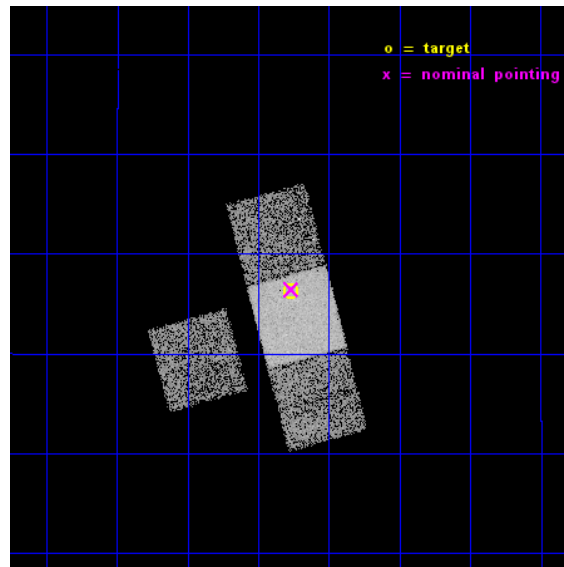
L2 Processing Date : Dec 8 2014

Contents

1	Front	2
2	OBI	3
2.1	OBI	3
2.1.1	Images	3
2.1.2	Bias	3
2.1.3	Parameters	4
2.1.4	Events	4
2.2	Compared Parameters	5
2.3	Aspect	6
2.4	Star Slots	9
2.4.1	Slot 3	9
2.4.2	Slot 5	10
2.4.3	Slot 6	11
2.4.4	Slot 7	12
2.5	FID Slots	13
2.5.1	Slot 0	13
2.5.2	Slot 1	14
2.5.3	Slot 2	15
A	Summary	16
A.1	Status	16
A.2	Comments	16

1 Front

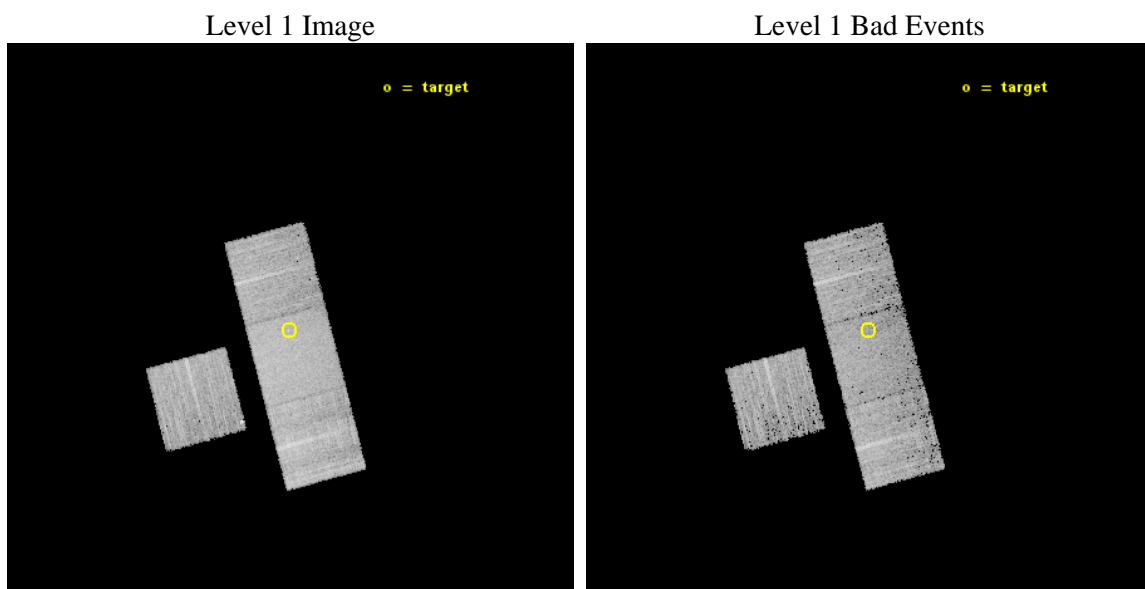
seq_num	702811	Sequence number
obs_id	15003	Observation id
title	The Herschel Legacy of powerful 3C radio galaxies and quasars II: observing Proposal.	Proposal title
observer	Dr Joanna Kuraszkiewicz	Principal investigator
object	3C226	Source name
dtcycle	0	
cycle	P	events from which exps? Prim/Second/Both
ra_targ	146.068333	Observer's specified target RA [deg]
dec_targ	9.772	Observer's specified target Dec [deg]
ra_nom	146.06626428189	Nominal RA [deg]
dec_nom	9.7742437948516	Nominal Dec [deg]
roll_nom	75.157004937481	Nominal Roll [deg]
revision	3	Processing version of data
ontime	10073.901331544	Sum of GTIs [s]
livetime	9942.278394349	Livetime [s]
ontime3	10073.819251537	Sum of GTIs [s]
ontime6	10073.860291541	Sum of GTIs [s]
ontime7	10073.901331544	Sum of GTIs [s]
ontime8	10073.778211534	Sum of GTIs [s]
l2events	45668	Number of level 2 events



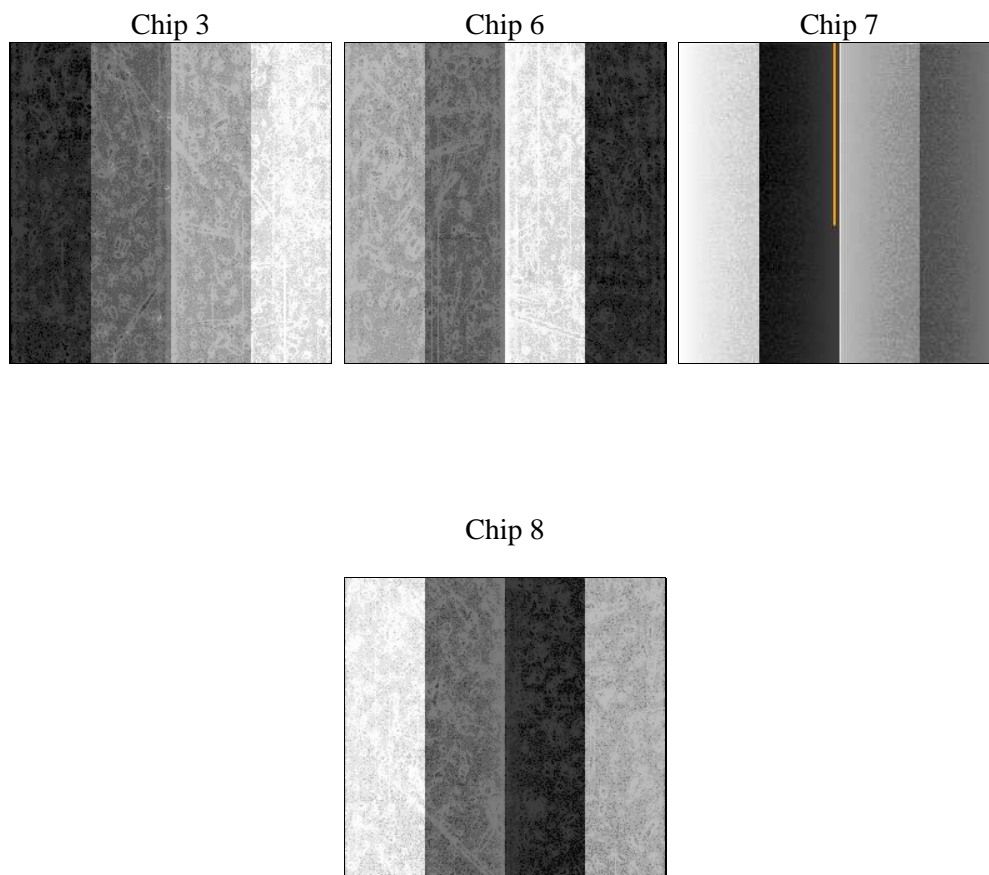
2 OBI

2.1 OBI

2.1.1 Images



2.1.2 Bias



2.1.3 Parameters

obi_num	0	Obi number	sched_exp_time	10000.000000	[s] Scheduled observation exposure time
ascdsver	10.3.1	Processing system revision	ontime	10073.901331544	Sum of GTIs [s]
caldsver	4.6.4	 	ontime3	10073.819251537	Sum of GTIs [s]
date	2014-12-08T14:57:44	Date and time of file creation	ontime6	10073.860291541	Sum of GTIs [s]
revision	3	Processing version of data	ontime7	10073.901331544	Sum of GTIs [s]
			ontime8	10073.778211534	Sum of GTIs [s]
			l1events	233048	Number of level 1 events

2.1.4 Events

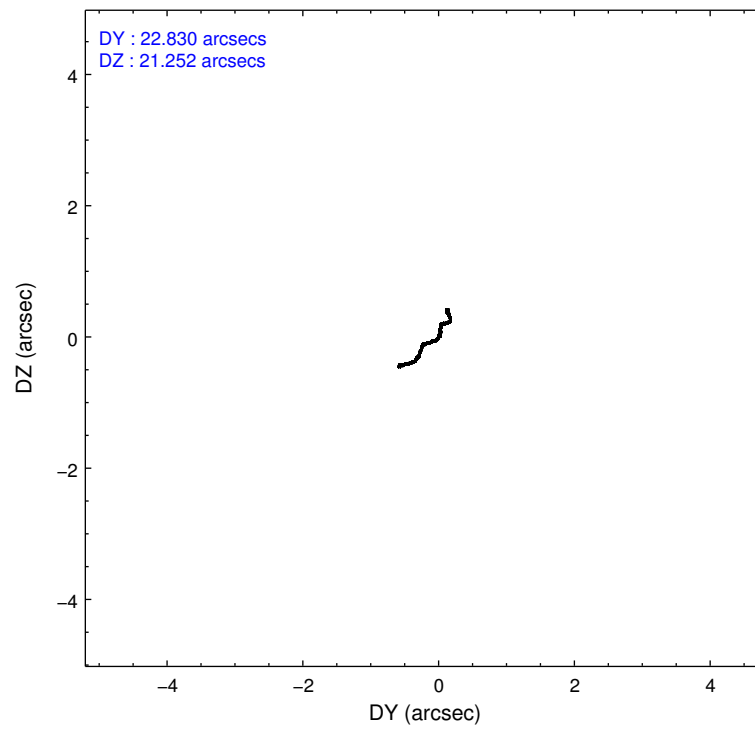
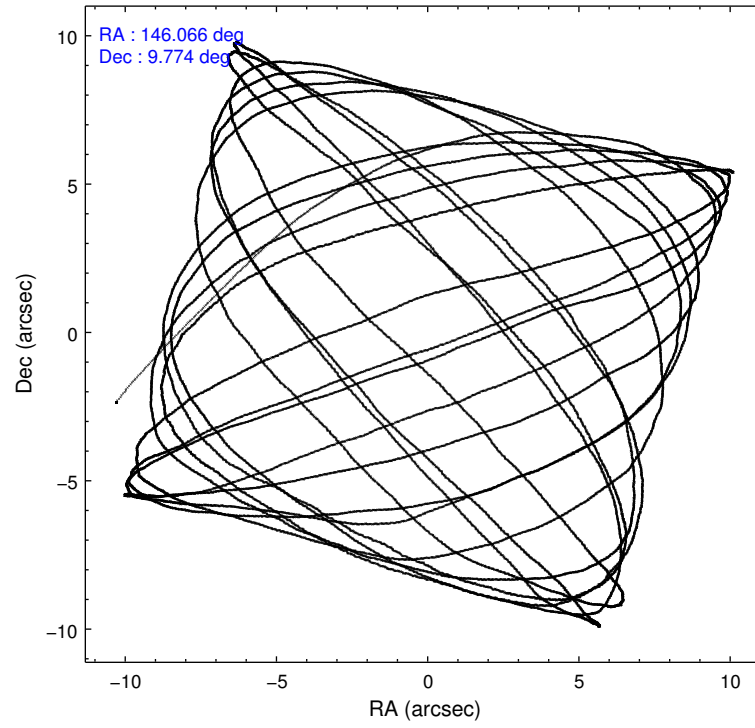
	ccd 3	ccd 6	ccd 7	ccd 8
level 1 events	49130	49453	67330	67135
rejected events	42888	43189	37894	48750
rejected %	87%	87%	56%	72%

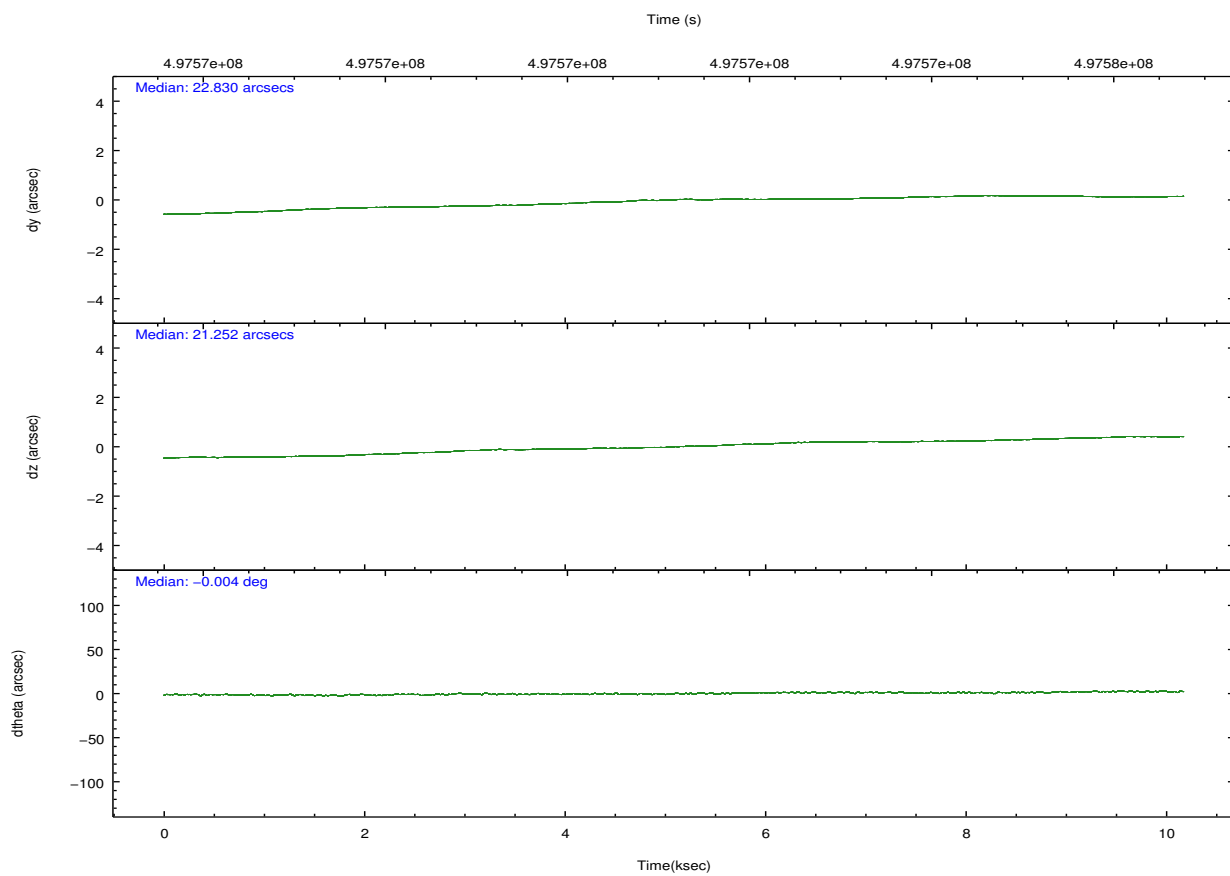
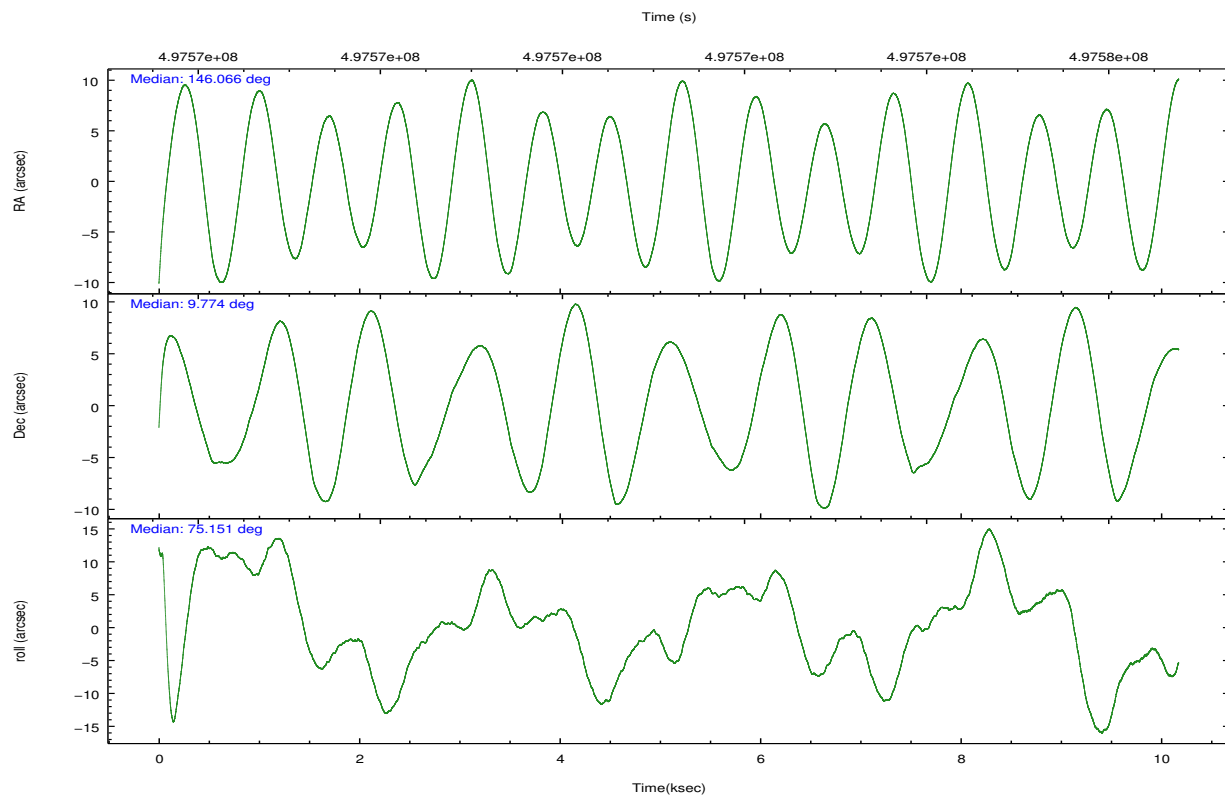
	ccd 3	ccd 6	ccd 7	ccd 8
grade 0 events	2603	2156	2680	5409
	5%	4%	3%	8%
grade 1 events	29	29	91	53
	0%	0%	0%	0%
grade 2 events	1228	1392	5940	4301
	2%	2%	8%	6%
grade 3 events	618	659	2557	1925
	1%	1%	3%	2%
grade 4 events	567	638	2603	1894
	1%	1%	3%	2%
grade 5 events	2661	2696	6929	3738
	5%	5%	10%	5%
grade 6 events	1229	1423	15683	4864
	2%	2%	23%	7%
grade 7 events	40195	40460	30847	44951
	81%	81%	45%	66%

2.2 Compared Parameters

Parameter	Planned	Actual	Parameter	Planned	Actual
Instrument	ACIS	ACIS	Obspar format version number	7	7
Detector	ACIS-3678	ACIS-3678	Obspar file type	PREDICTED	ACTUAL
Grating	NONE	NONE	Obspar update status	NONE	UPDATED
Data mode	FAINT	FAINT	CCD I0 on	N	N
Observation mode	POINTING	POINTING	CCD I1 on	N	N
[deg] Pointing RA	146.073868	146.0662642818928	CCD I2 on	N	N
[deg] Pointing Dec	9.747938	9.774243794851582	CCD I3 on	O1	Y
[deg] Pointing Roll	74.999064	75.15700493748065	CCD S0 on	N	N
[mm] SIM focus pos	-0.684267	-0.6828225247311905	CCD S1 on	N	N
[mm] SIM defocus	0	0.001444936568705701	CCD S2 on	O3	Y
[mm] SIM translation stage pos	-190.132523	-190.1400660498719	CCD S3 on	Y	Y
[mm] SIM translation stage offset	0	0.00754346686406393	CCD S4 on	O2	Y
[s] Observation start time (MET)	497566250.184000	497564874.66579	CCD S5 on	N	N
Observation start date	2013-10-07T20:49:43	2013-10-07T20:27:54	Number of optional ACIS chips dropped	0	0
[s] Observation end time (MET)	497576250.184000	497577377.10397	On-chip summing requested	N	N
Observation end date	2013-10-07T23:36:23	2013-10-07T23:56:17	Subarray requested	NONE	NONE
Read mode	TIMED	TIMED	Alternating exposures requested	N	N
			[s] Primary exposure time	0.000000	3.1

2.3 Aspect



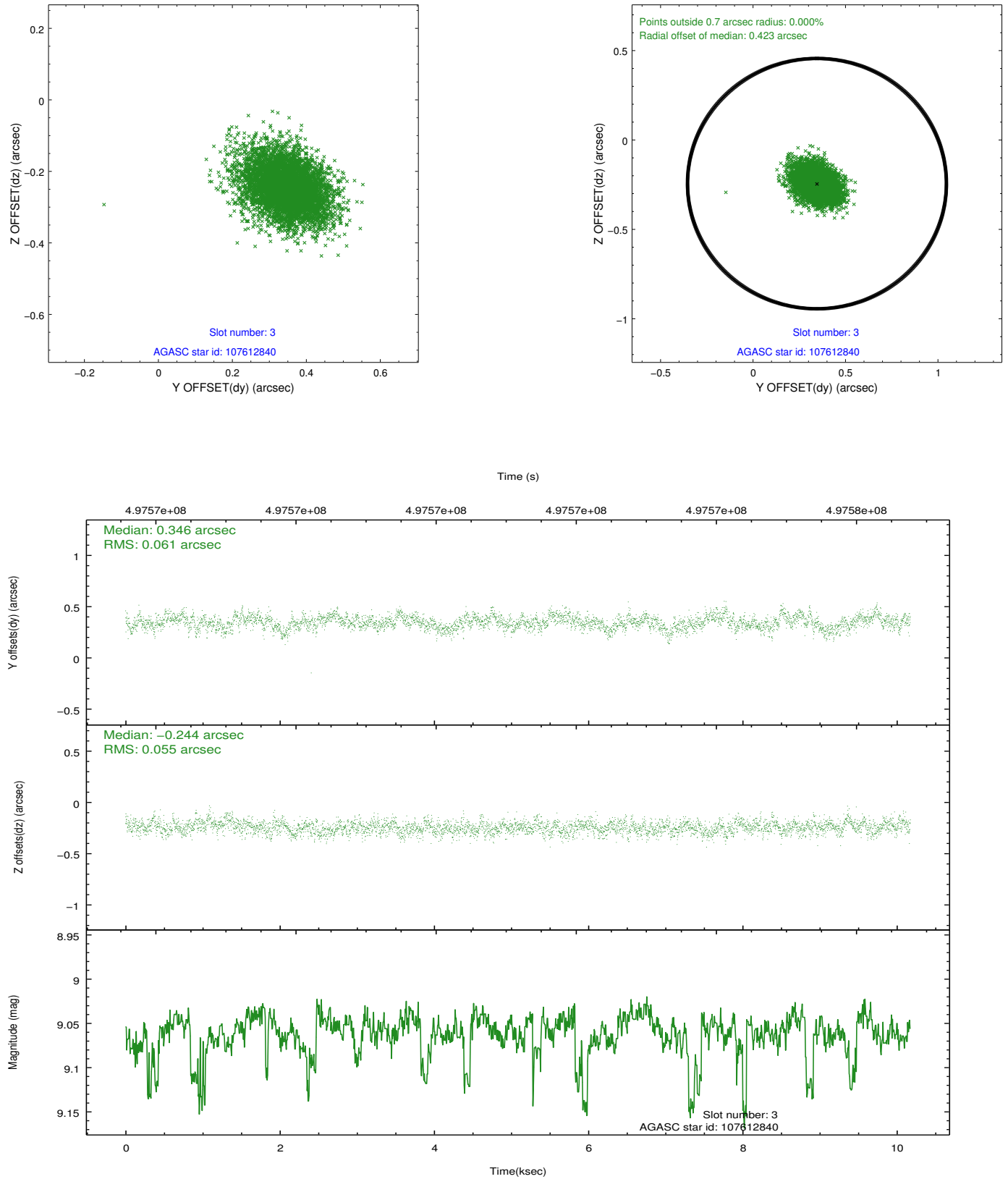


Slot Statistics

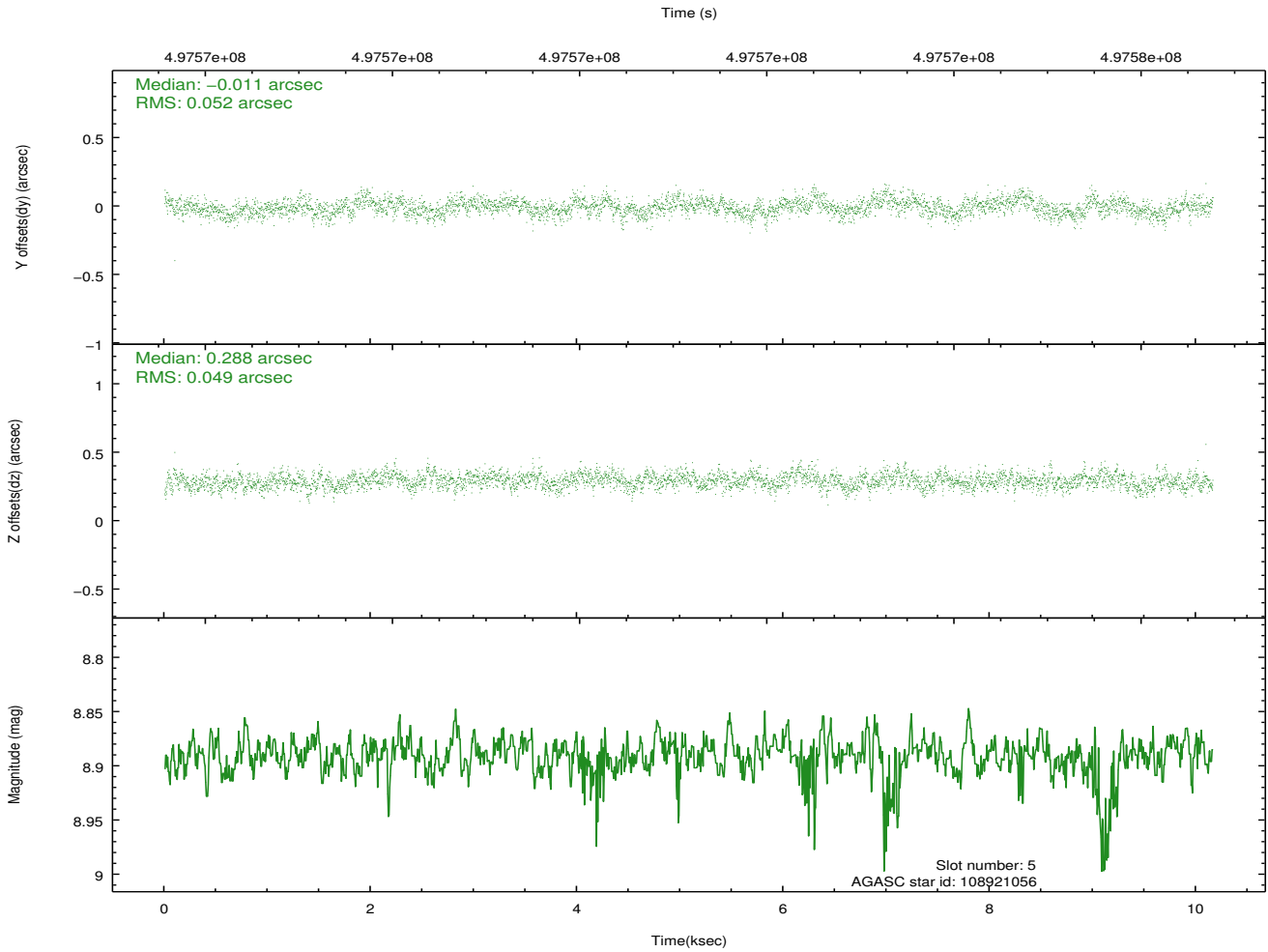
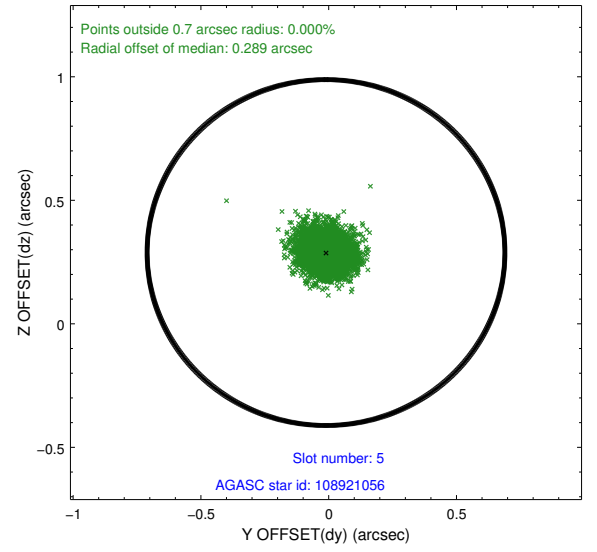
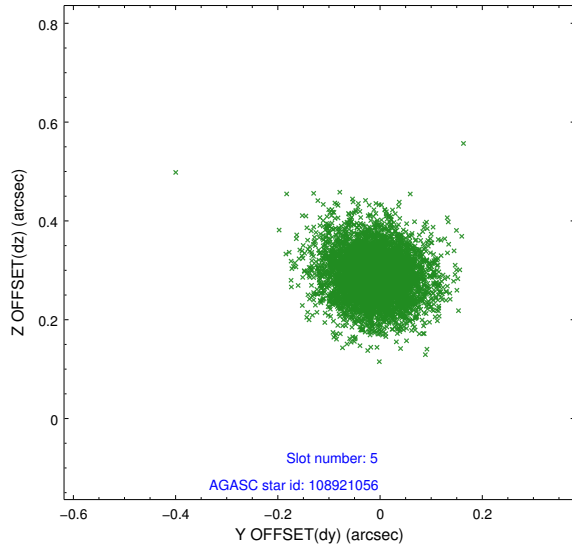
slot	status	used	id	mag	n_pts	med_dy	med_dz	dr1	dr2	ra	dec	mean_y	mean_z
0	FID		ACIS-S-2	6.94	2482	-0.028	0.002	0.009	0.017	0.000000	0.000000	-775.94	-1742.79
1	FID		ACIS-S-5	7.06	2482	-0.103	-0.044	0.015	0.024	0.000000	0.000000	-1829.37	158.60
2	FID		ACIS-S-6	7.15	2482	0.104	0.050	0.010	0.017	0.000000	0.000000	385.24	803.18
3	GUIDE	used	107612840	9.06	4942	0.346	-0.244	0.085	0.145	145.374441	9.465044	-1623.66	2135.81
4	OMITTED			0.00	0	0.000	0.000	0.000	0.000	0.000000	0.000000	0.00	0.00
5	GUIDE	used	108921056	8.89	4941	-0.011	0.288	0.075	0.125	146.524966	10.064292	1515.32	-1248.62
6	GUIDE	used	108925296	6.27	4964	-0.202	0.190	0.080	0.126	146.369337	10.221927	1920.25	-569.53
7	GUIDE	used	108929824	8.68	4959	-0.128	-0.234	0.091	0.141	145.788906	10.499835	2354.26	1675.42

2.4 Star Slots

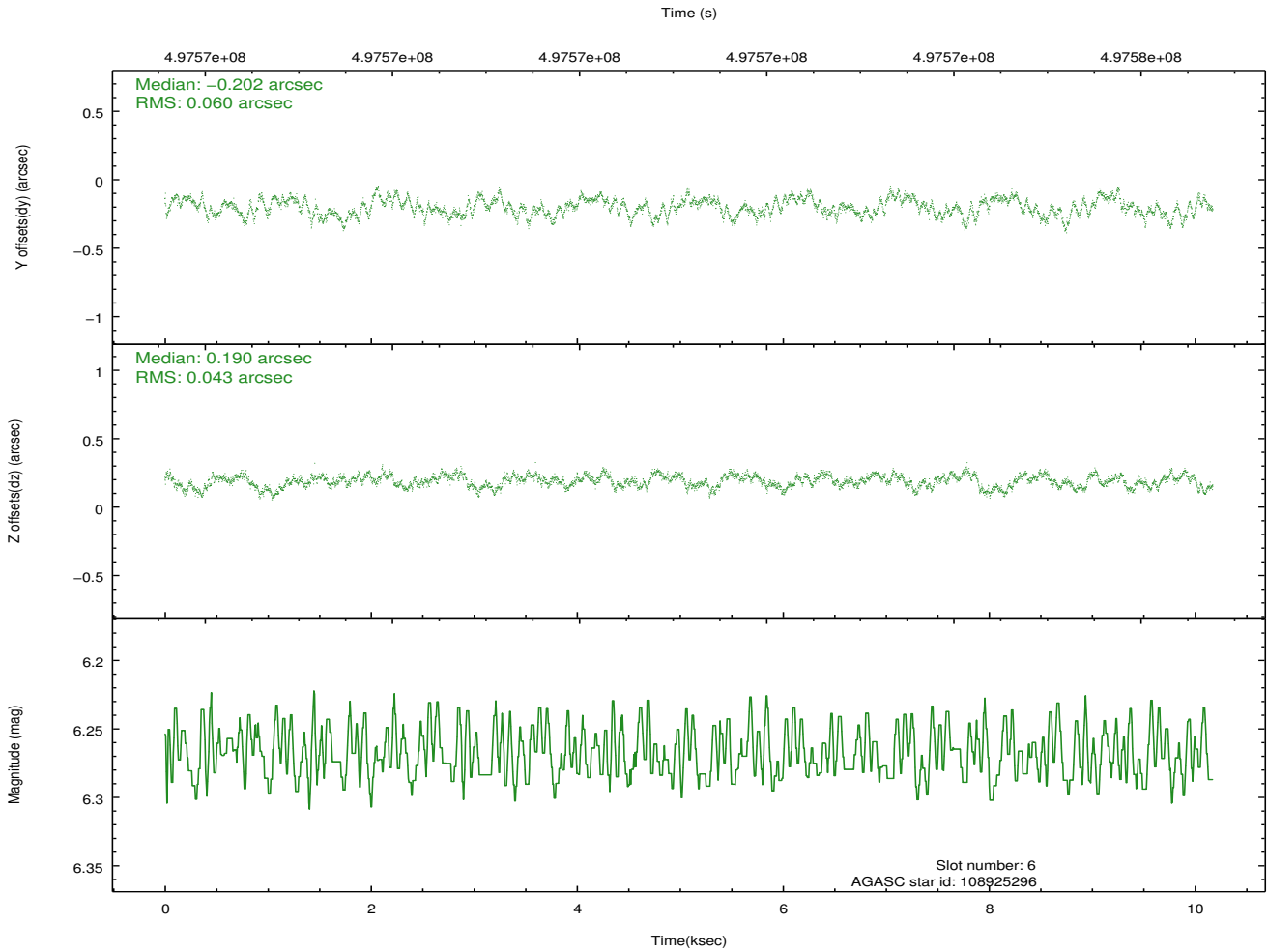
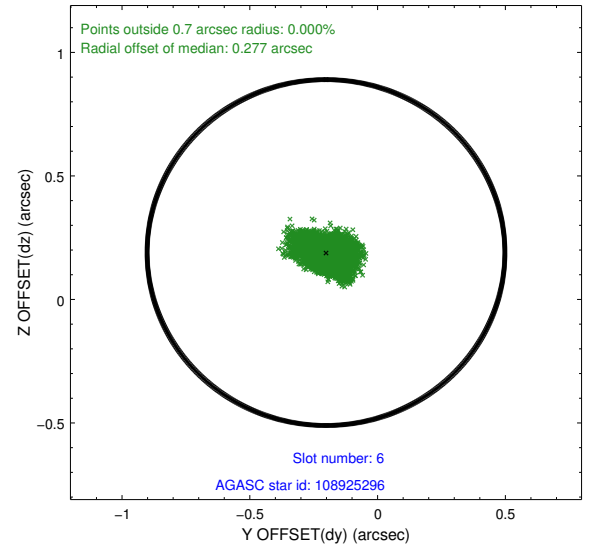
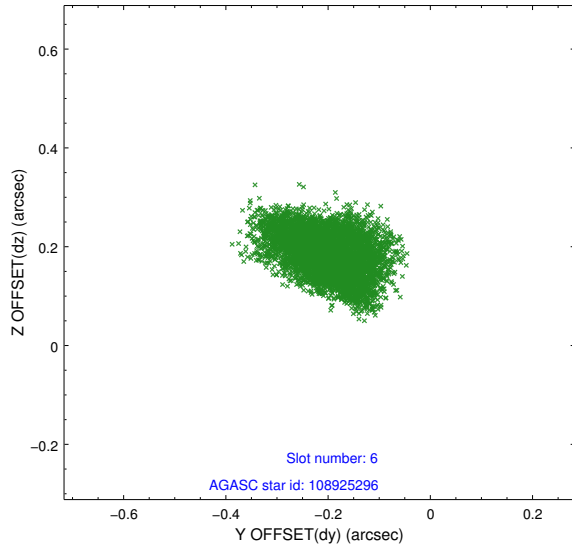
2.4.1 Slot 3



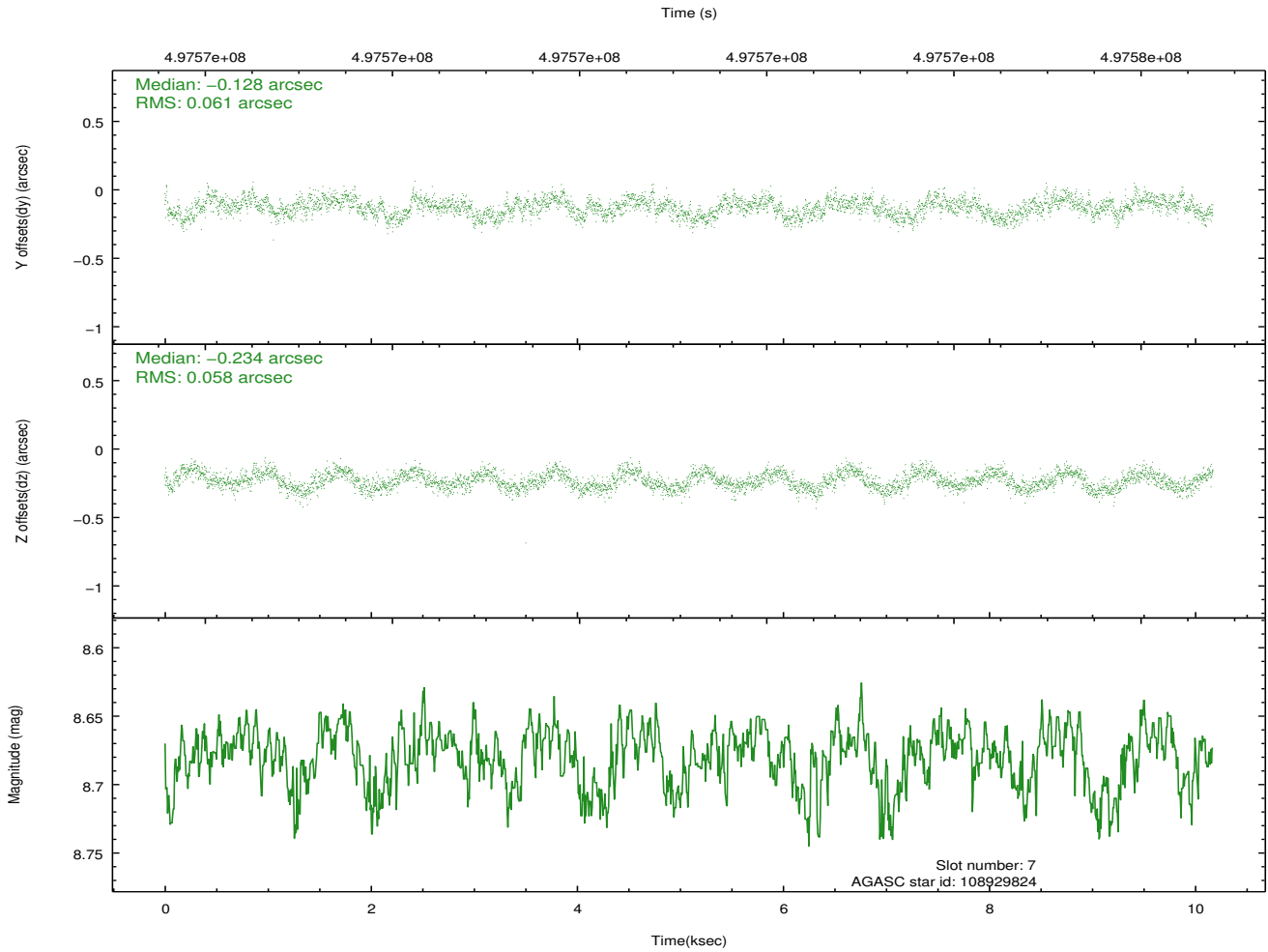
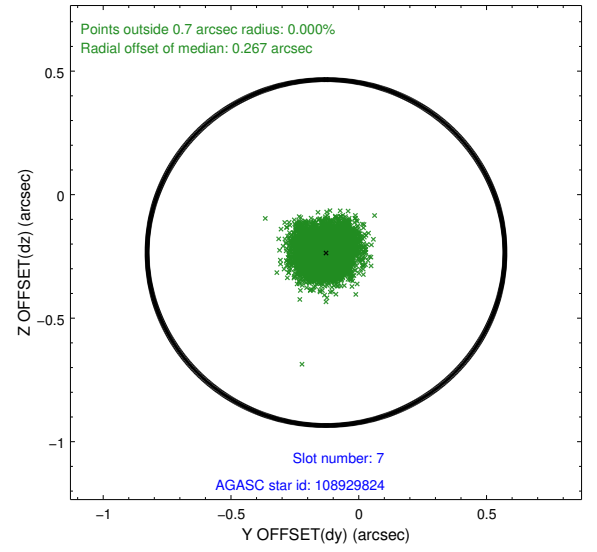
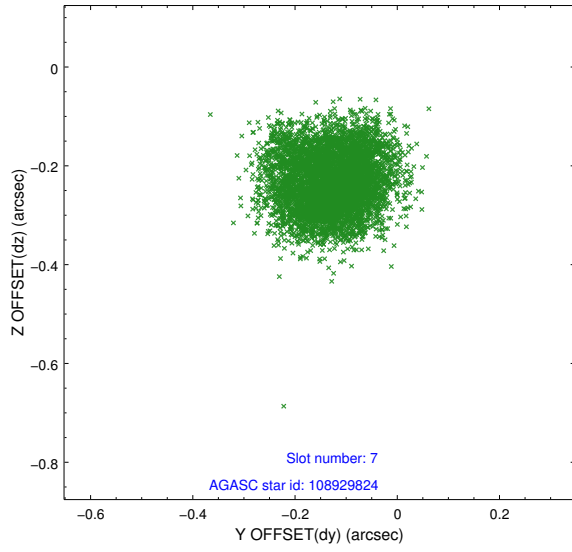
2.4.2 Slot 5



2.4.3 Slot 6

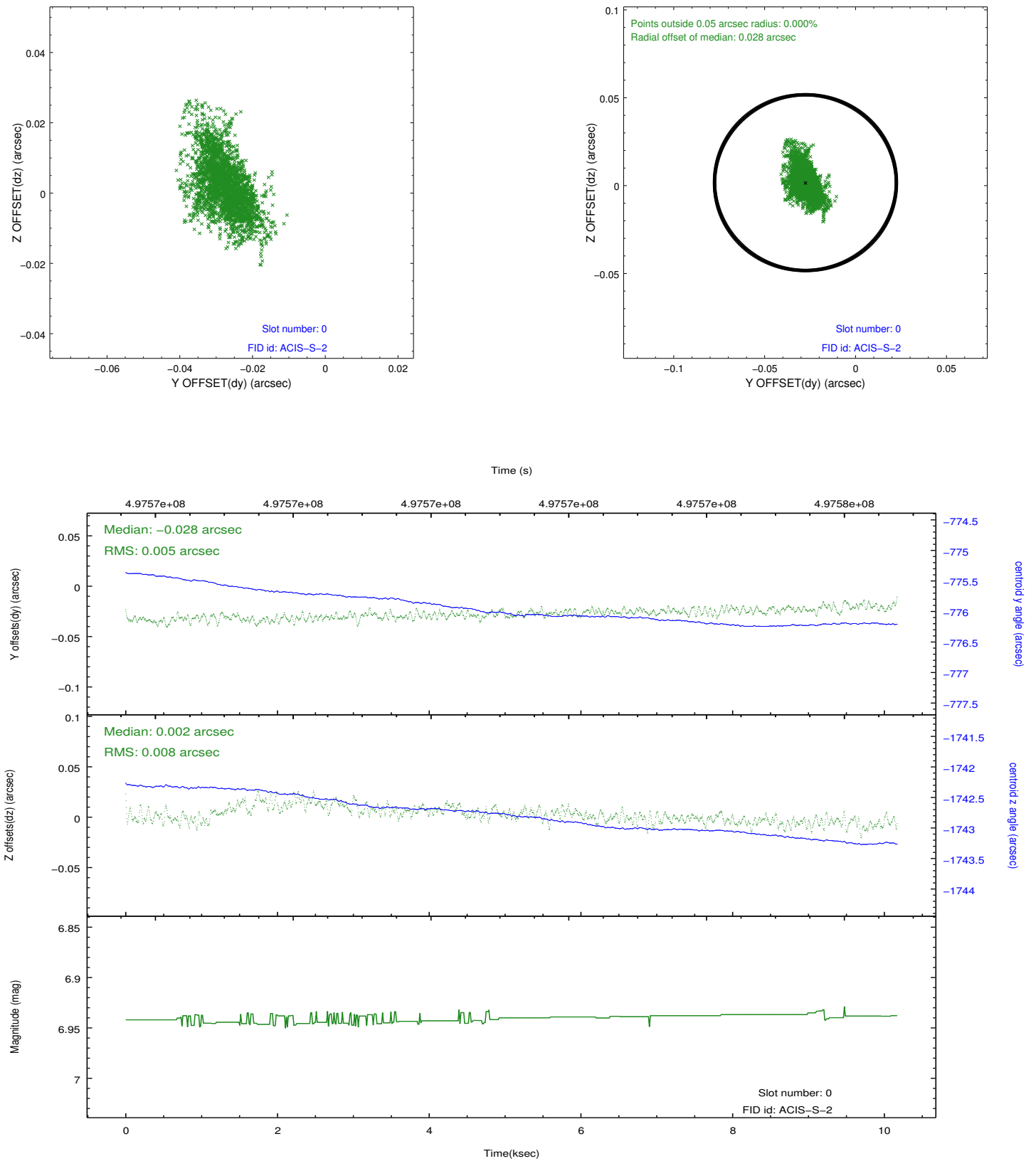


2.4.4 Slot 7

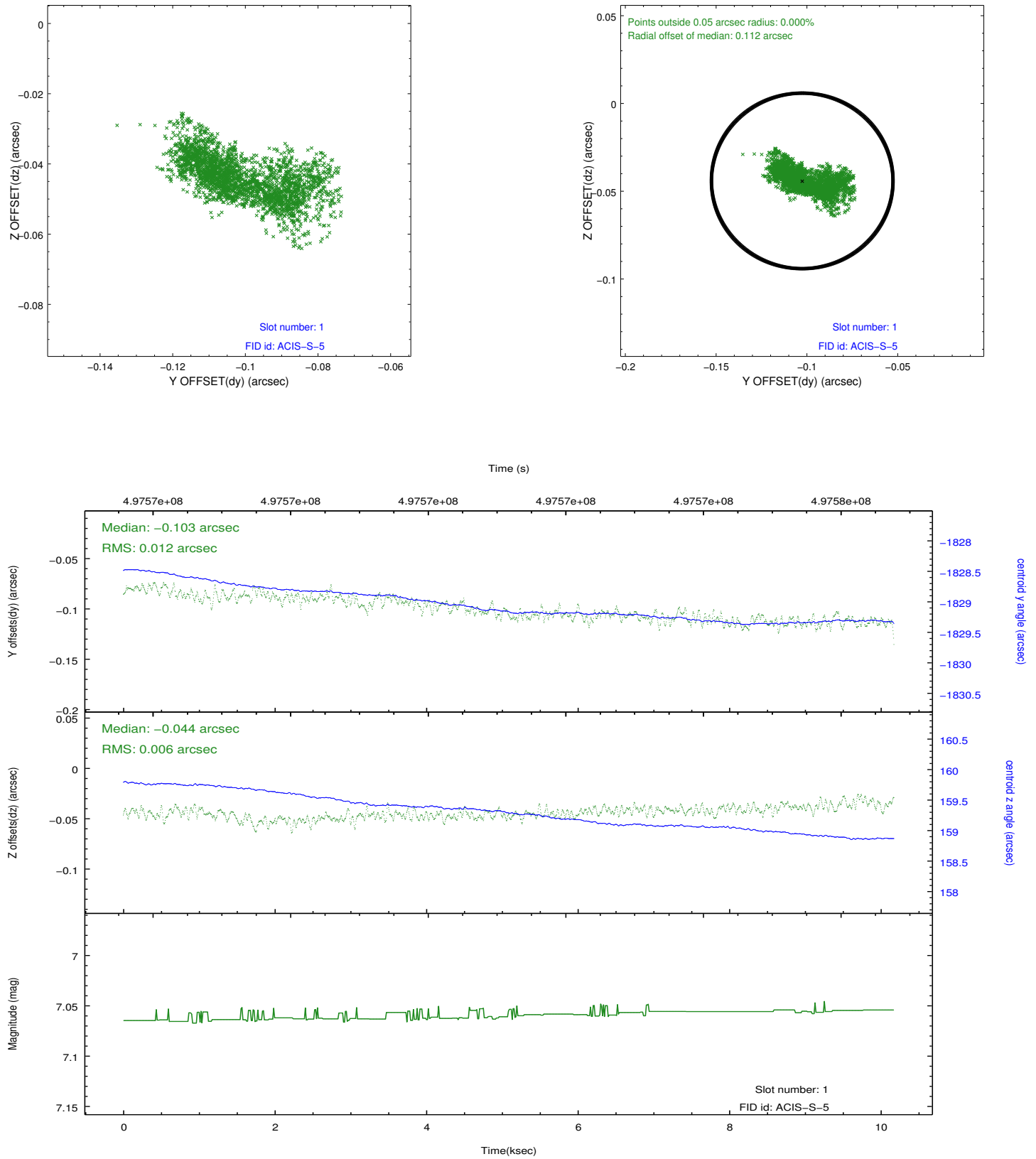


2.5 FID Slots

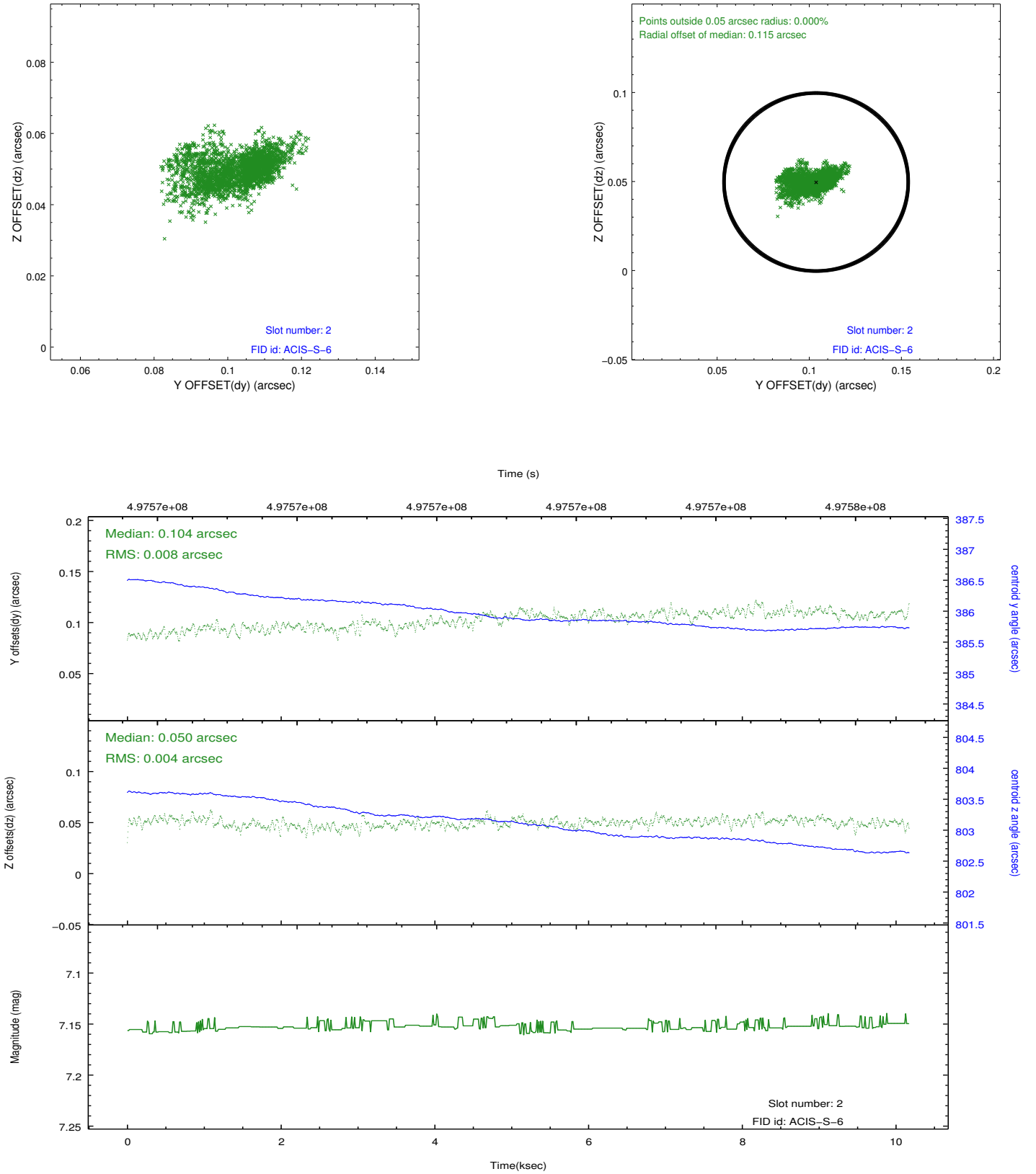
2.5.1 Slot 0



2.5.2 Slot 1



2.5.3 Slot 2



A Summary

A.1 Status

V&V Scientist	Beth Sundheim
V&V Date (YYYY-MM-DD)	2014.12.16
V&V Edition	1
V&V Disposition and Status	OK
V&V Charge Time	10.073901331544

A.2 Comments

The guide star in slot 4 was removed from the aspect solution due to poor data quality. The aspect solution is improved by the removal of this star from the solution.

These data have been reprocessed with new aspect alignment calibration files that correct small mean offsets (up to 0.4 arcsecs) and improve overall astrometric accuracy. The new calibration was determined using data from the time period being reprocessed and was performed using cross-correlation of X-ray sources with radio and optical counterparts.