

# V&V Reference Report

## L2 ASCDS Version : 8.5.1

Observation 14964 - L2 Version 2  
Chandra X-Ray Center

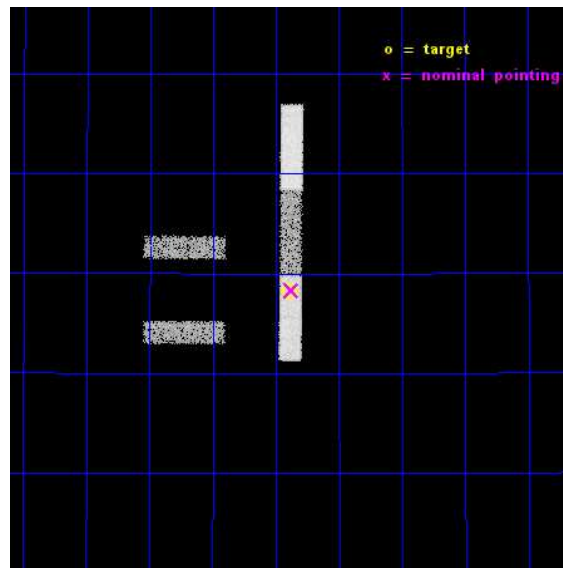
L2 Processing Date : Nov 30 2014

## Contents

<b>1</b>	<b>Front</b>	<b>2</b>
<b>2</b>	<b>OBI</b>	<b>3</b>
2.1	OBI . . . . .	3
2.1.1	Images . . . . .	3
2.1.2	Bias . . . . .	3
2.1.3	Parameters . . . . .	4
2.1.4	Events . . . . .	4
2.2	Compared Parameters . . . . .	5
2.3	Aspect . . . . .	6
2.4	Star Slots . . . . .	9
2.4.1	Slot 3 . . . . .	9
2.4.2	Slot 4 . . . . .	10
2.4.3	Slot 5 . . . . .	11
2.4.4	Slot 6 . . . . .	12
2.4.5	Slot 7 . . . . .	13
2.5	FID Slots . . . . .	14
2.5.1	Slot 0 . . . . .	14
2.5.2	Slot 1 . . . . .	15
2.5.3	Slot 2 . . . . .	16
<b>A</b>	<b>Summary</b>	<b>17</b>
A.1	Status . . . . .	17
A.2	Comments . . . . .	17

# 1 Front

seq_num	702773	Sequence number
obs_id	14964	Observation id
title	X-ray Confirmation of Optically Selected Kpc-Scale Binary AGNs	Pro
observer	Dr. Xin Liu	Principal investigator
object	SDSSJ0805+2818	Source name
dtcycle	0	&#160
cycle	P	events from which exps? Prim/Second/Both
ra_targ	121.347083	Observer's specified target RA [deg]
dec_targ	28.304389	Observer's specified target Dec [deg]
ra_nom	121.34415881692	Nominal RA [deg]
dec_nom	28.305169336382	Nominal Dec [deg]
roll_nom	90.434141042618	Nominal Roll [deg]
revision	2	Processing version of data
ontime	14858.0	Sum of GTIs [s]
livetime	14272.266195343	Livetime [s]
ontime2	14858.0	Sum of GTIs [s]
ontime3	14858.0	Sum of GTIs [s]
ontime5	14858.0	Sum of GTIs [s]
ontime6	14858.0	Sum of GTIs [s]
ontime7	14858.0	Sum of GTIs [s]
l2events	35245	Number of level 2 events

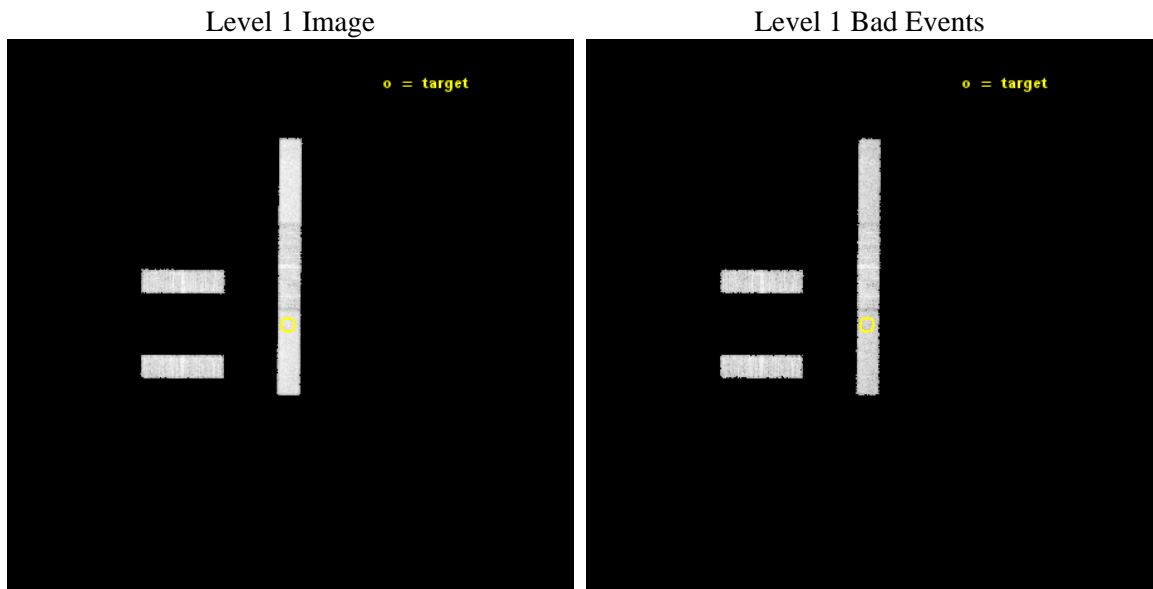




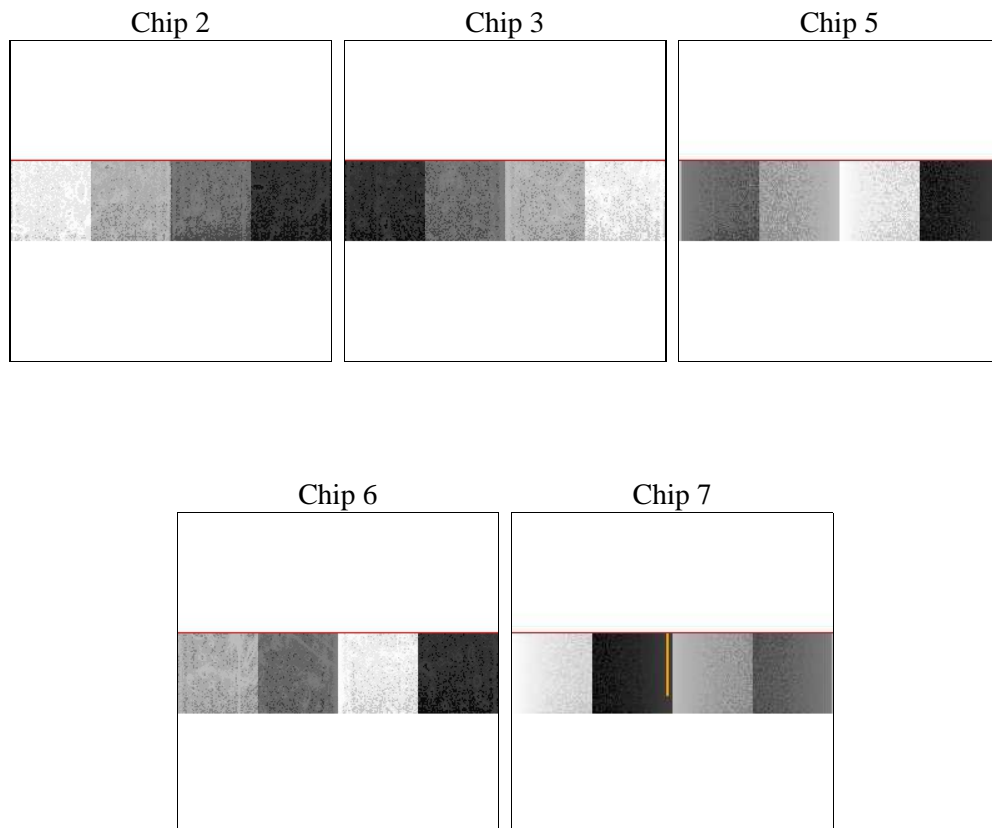
## 2 OBI

### 2.1 OBI

#### 2.1.1 Images



#### 2.1.2 Bias



### 2.1.3 Parameters

obi_num	0	Obi number	sched_exp_time	14800.000000	[s] Scheduled observation exposure time
ascdsver	10.3	Processing system revision	ontime	14858.0	Sum of GTIs [s]
caldsver	4.6.4	&#160	ontime2	14858.0	Sum of GTIs [s]
date	2014-11-30T07:31:11	Date and time of file creation	ontime3	14858.0	Sum of GTIs [s]
revision	2	Processing version of data	ontime5	14858.0	Sum of GTIs [s]
			ontime6	14858.0	Sum of GTIs [s]
			ontime7	14858.0	Sum of GTIs [s]
			l1events	131614	Number of level 1 events

### 2.1.4 Events

	ccd 2	ccd 3	ccd 5	ccd 6	ccd 7
level 1 events	23043	22133	33689	23164	29585
rejected events	20362	19575	17489	20353	16357
rejected %	88%	88%	51%	87%	55%

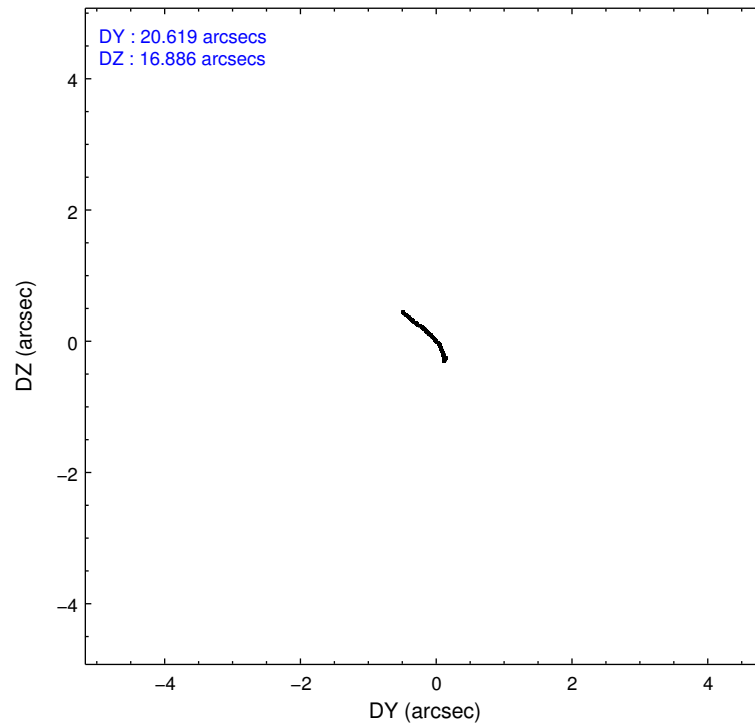
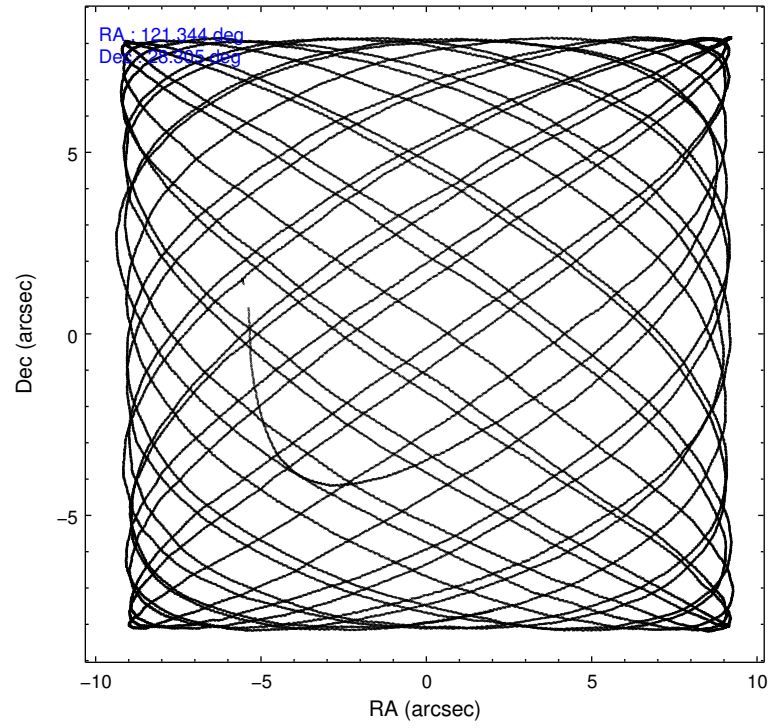
	ccd 2	ccd 3	ccd 5	ccd 6	ccd 7
grade 0 events	830	812	1226	811	1295
	3%	3%	3%	3%	4%
grade 1 events	10	9	76	9	32
	0%	0%	0%	0%	0%
grade 2 events	587	495	4748	602	2706
	2%	2%	14%	2%	9%
grade 3 events	388	392	919	412	1410
	1%	1%	2%	1%	4%
grade 4 events	389	360	910	401	1417
	1%	1%	2%	1%	4%
grade 5 events	833	1087	2991	1072	3033
	3%	4%	8%	4%	10%
grade 6 events	488	500	8401	585	6400
	2%	2%	24%	2%	21%
grade 7 events	19518	18478	14418	19272	13292
	84%	83%	42%	83%	44%

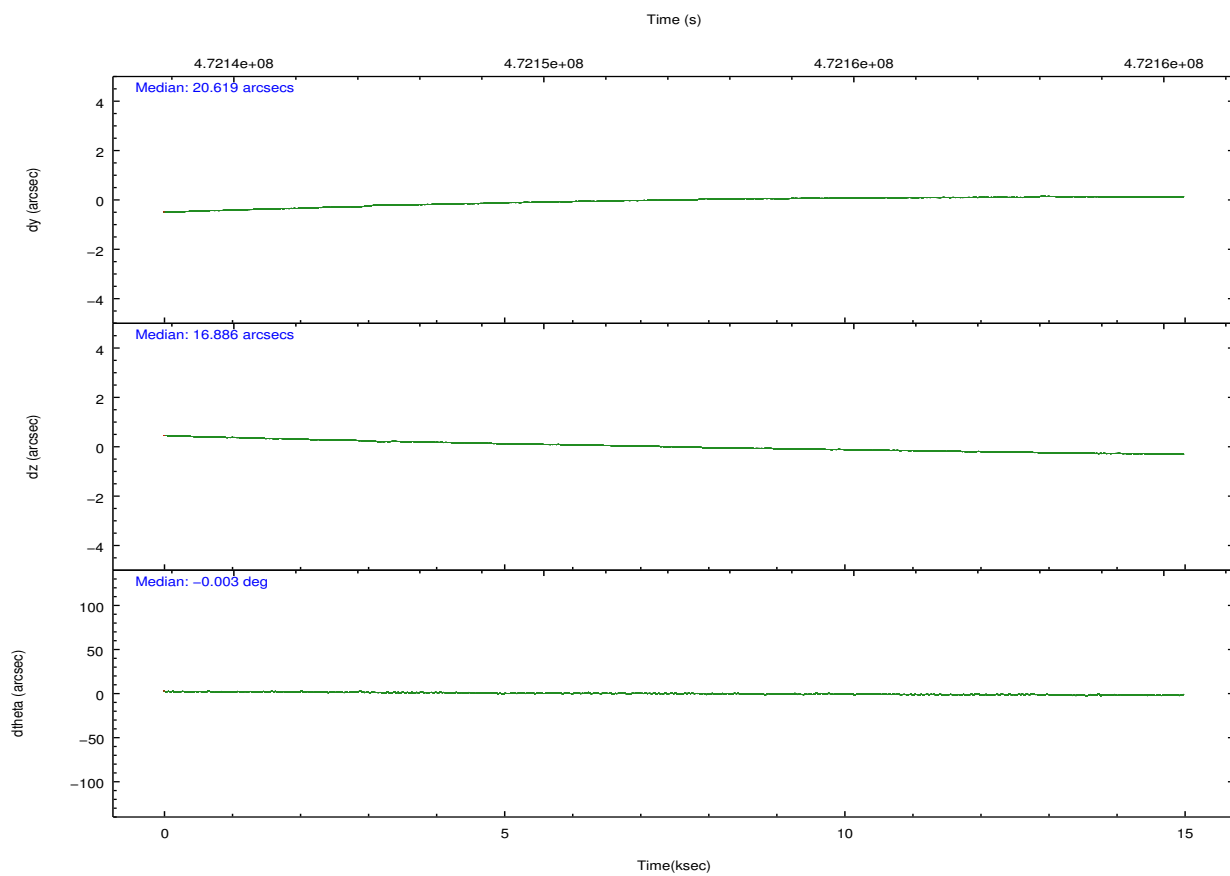
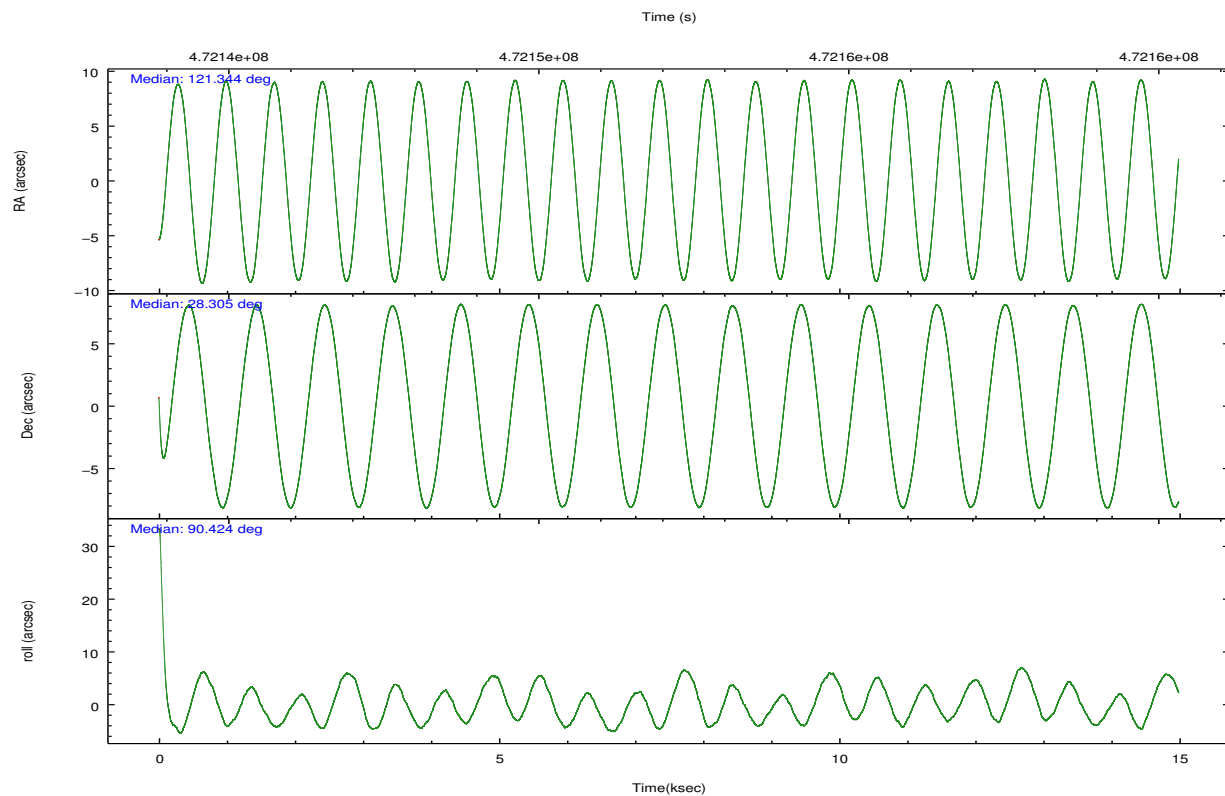
## 2.2 Compared Parameters

Parameter	Planned	Actual
Instrument	ACIS	ACIS
Detector	ACIS-23567	ACIS-23567
Grating	NONE	NONE
Data mode	FAINT	FAINT
Observation mode	POINTING	POINTING
[deg] Pointing RA	121.360263	121.3441588169214
[deg] Pointing Dec	28.281771	28.30516933638198
[deg] Pointing Roll	90.269857	90.43414104261804
[mm] SIM focus pos	-0.684267	-0.6828225247311905
[mm] SIM defocus	0	0.001444936568705701
[mm] SIM translation stage pos	-190.132523	-190.1425803651734
[mm] SIM translation stage offset	0	0.01005778216563158
[s] Observation start time (MET)	472144788.184000	472143716.06189
Observation start date	2012-12-17T15:18:41	2012-12-17T15:01:56
[s] Observation end time (MET)	472159588.184000	472161099.03783
Observation end date	2012-12-17T19:25:21	2012-12-17T19:51:39
Read mode	TIMED	TIMED

Parameter	Planned	Actual
Obspar format version number	7	7
Obspar file type	PREDICTED	ACTUAL
Obspar update status	NONE	UPDATED
CCD I0 on	N	N
CCD I1 on	N	N
CCD I2 on	Y	Y
CCD I3 on	Y	Y
CCD S0 on	N	N
CCD S1 on	O1	Y
CCD S2 on	Y	Y
CCD S3 on	Y	Y
CCD S4 on	N	N
CCD S5 on	N	N
Number of optional ACIS chips dropped	0	0
On-chip summing requested	N	N
Subarray requested	CUSTOM	1/4
Subarray start row	385	385
Subarray row count	256	256
Alternating exposures requested	N	N
[s] Primary exposure time	0.000000	1

## 2.3 Aspect



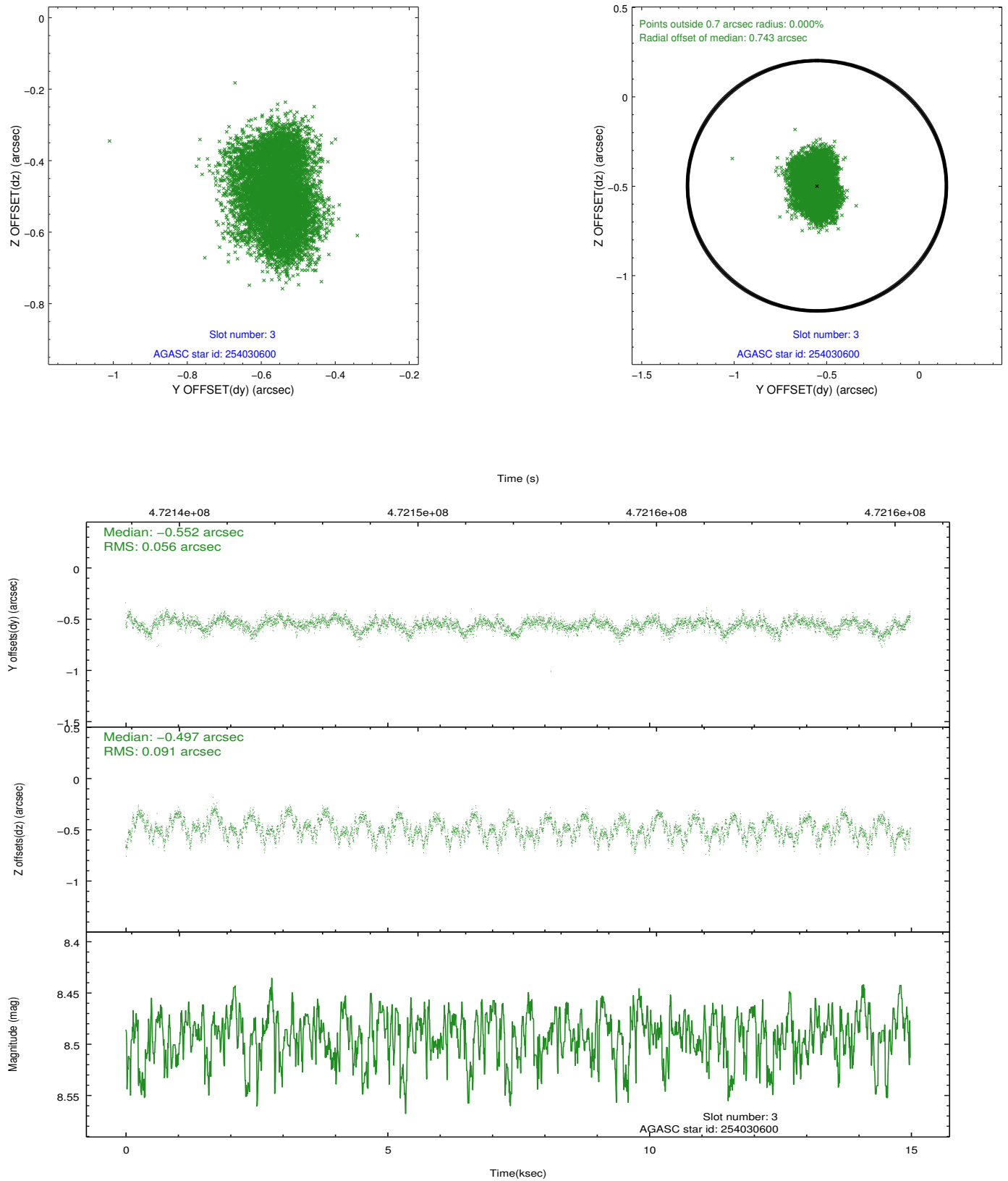


### Slot Statistics

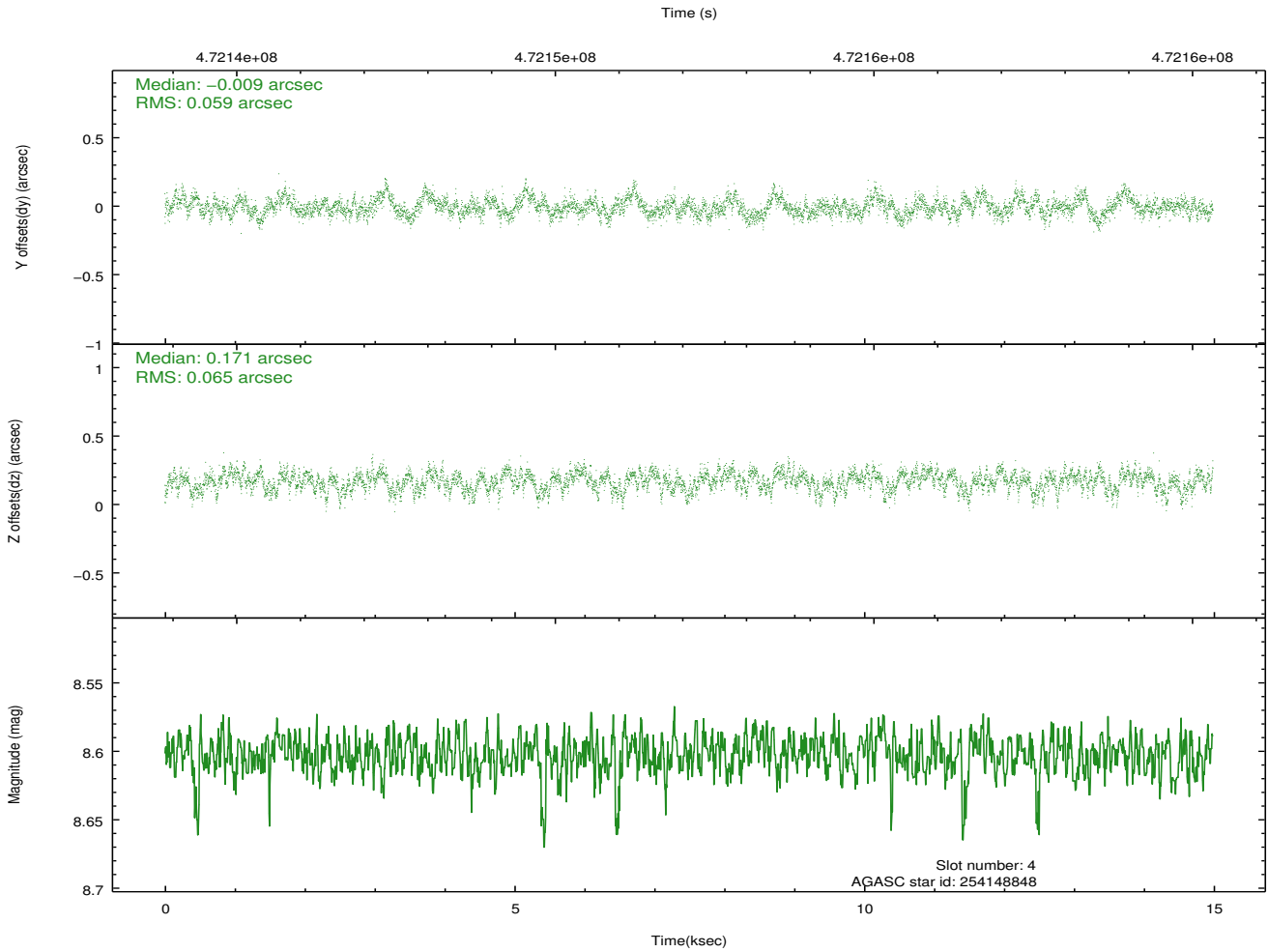
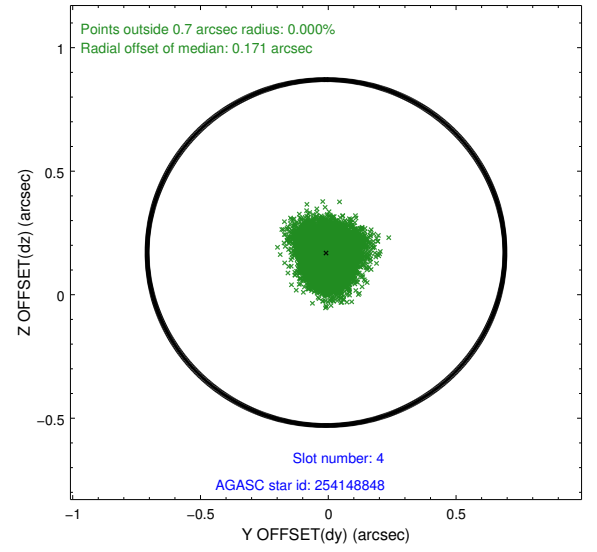
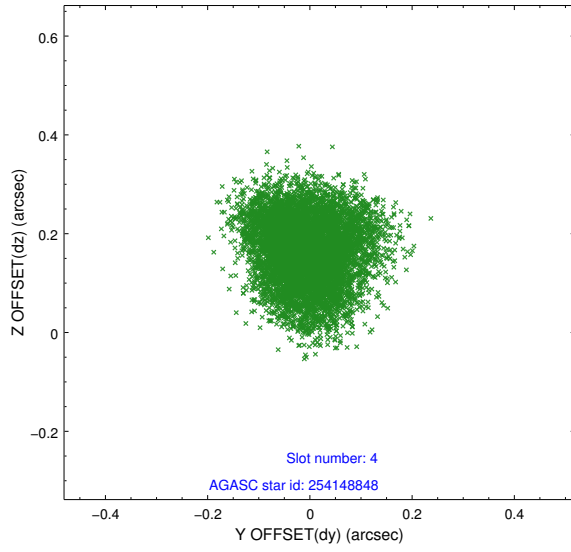
slot	status	used	id	mag	n_pts	med_dy	med_dz	dr1	dr2	ra	dec	mean_y	mean_z
0	FID		ACIS-S-2	6.92	3656	-0.117	-0.020	0.011	0.020	0.000000	0.000000	-773.82	-1738.29
1	FID		ACIS-S-4	7.01	3656	0.252	0.063	0.008	0.015	0.000000	0.000000	2139.72	169.92
2	FID		ACIS-S-5	7.04	3656	-0.165	-0.034	0.014	0.027	0.000000	0.000000	-1826.30	163.90
3	GUIDE	used	254030600	8.49	7309	-0.552	-0.497	0.118	0.178	120.885272	28.753200	1706.53	1491.06
4	GUIDE	used	254148848	8.60	7307	-0.009	0.171	0.095	0.151	121.812561	28.591838	1112.83	-1434.31
5	GUIDE	used	254149440	9.34	7302	-0.066	0.113	0.126	0.197	122.072793	28.597278	1132.35	-2257.18
6	GUIDE	used	253497272	9.16	7306	0.293	-0.020	0.099	0.161	120.967734	27.793337	-1750.54	1257.79
7	GUIDE	used	253635560	9.42	7301	0.332	0.228	0.153	0.233	121.891540	27.828640	-1635.02	-1683.53

## 2.4 Star Slots

### 2.4.1 Slot 3

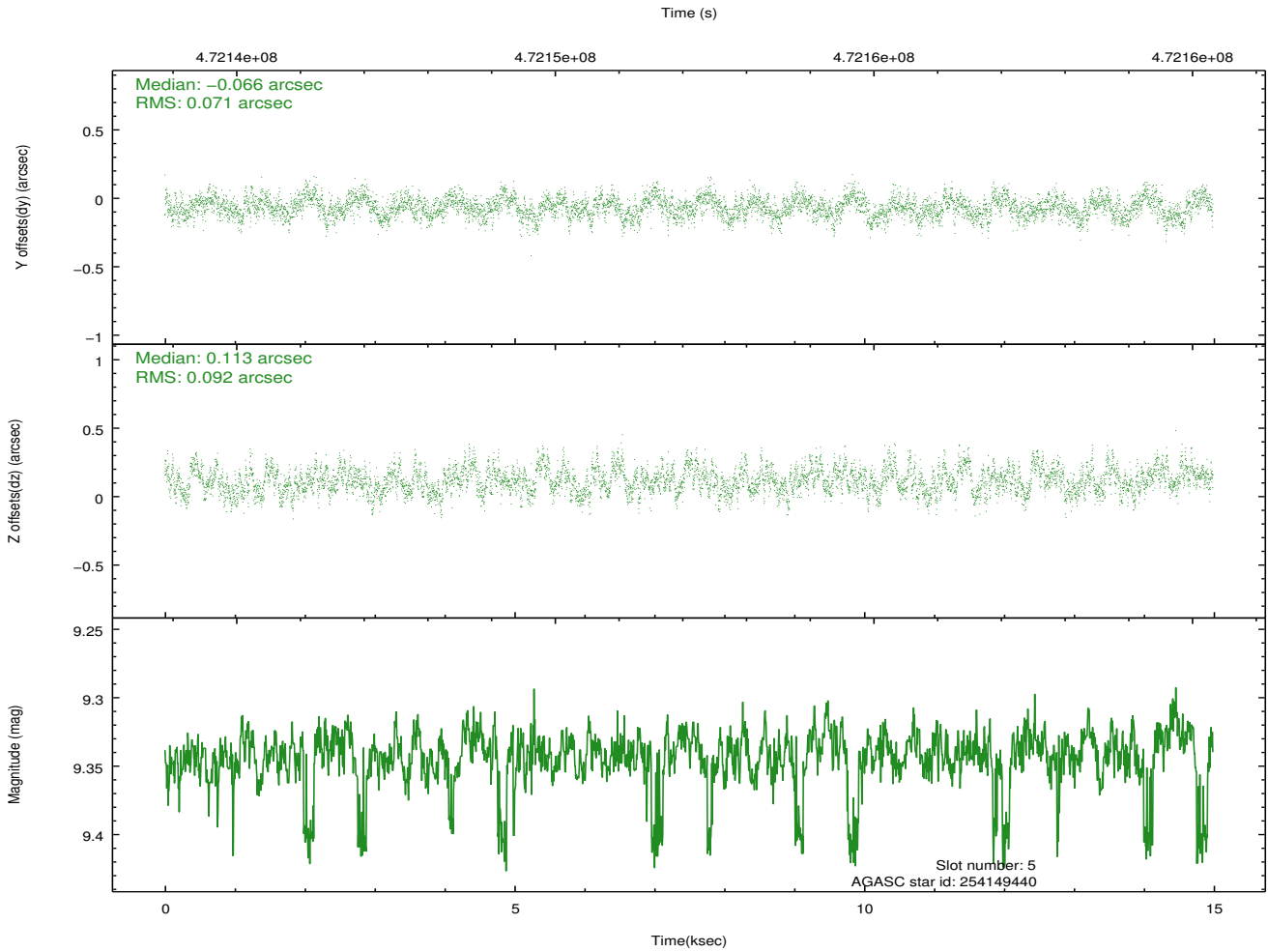
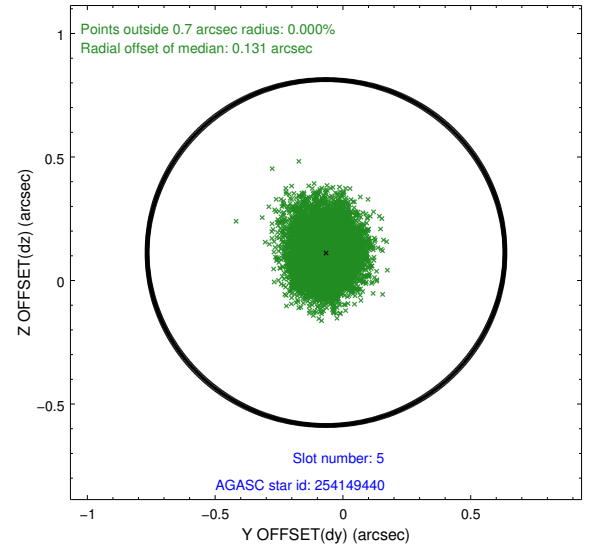
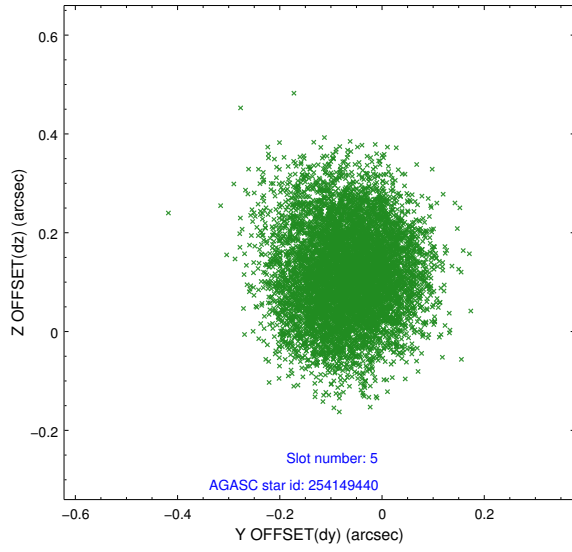


## 2.4.2 Slot 4

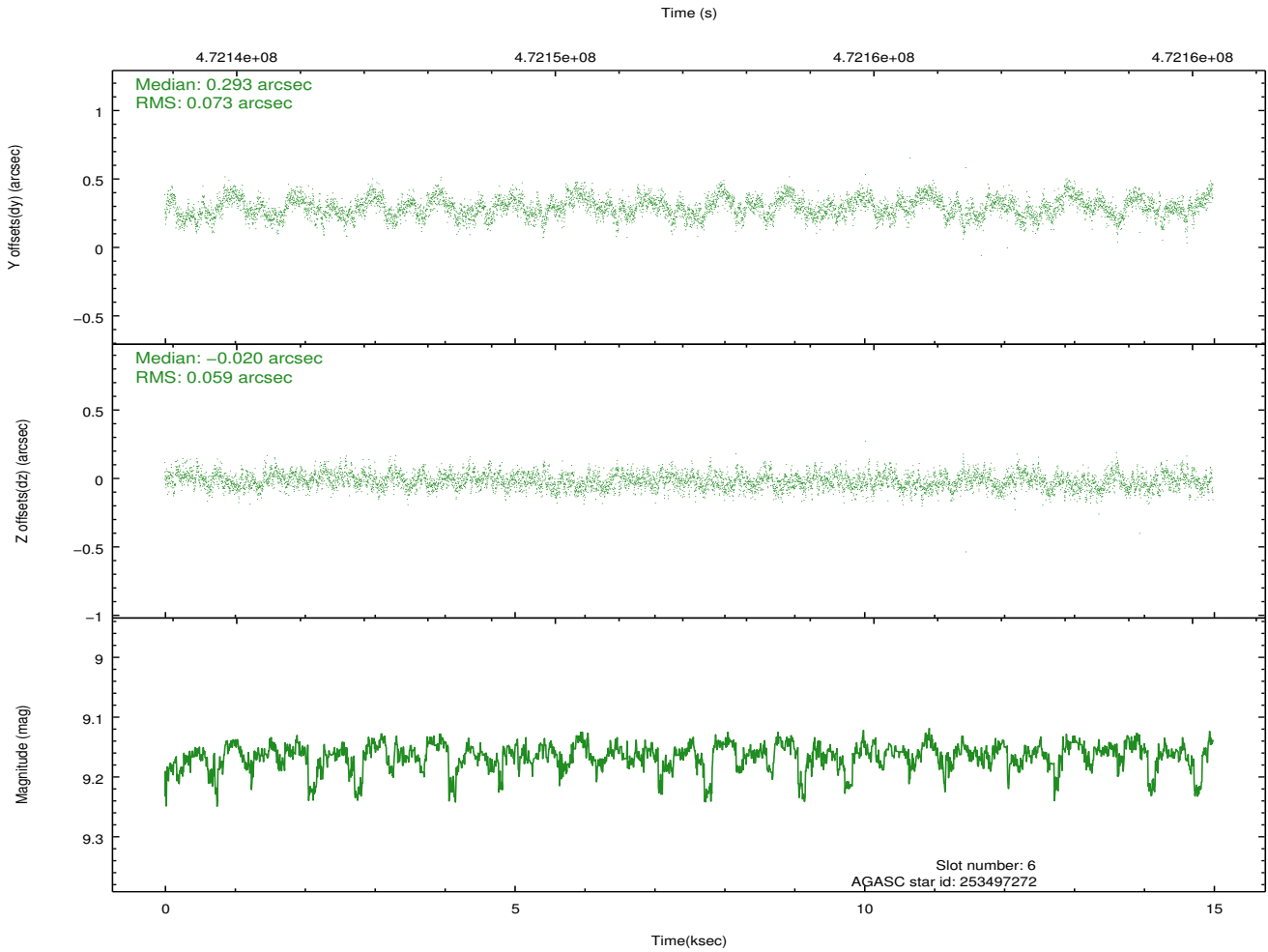
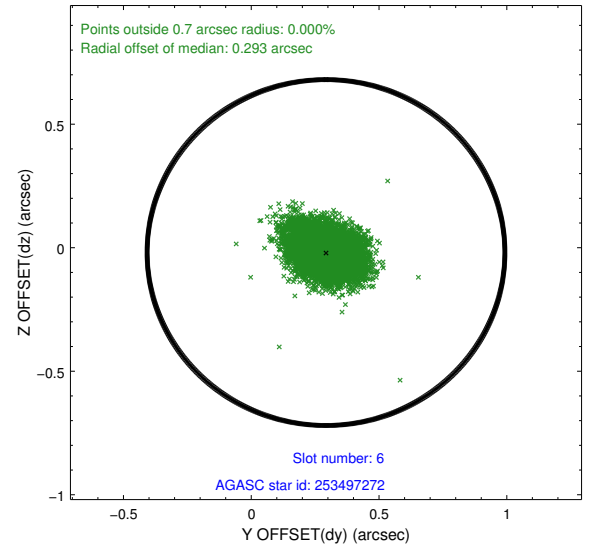
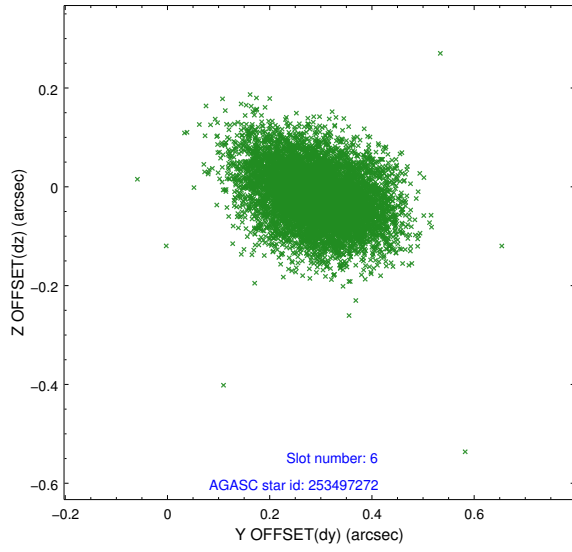




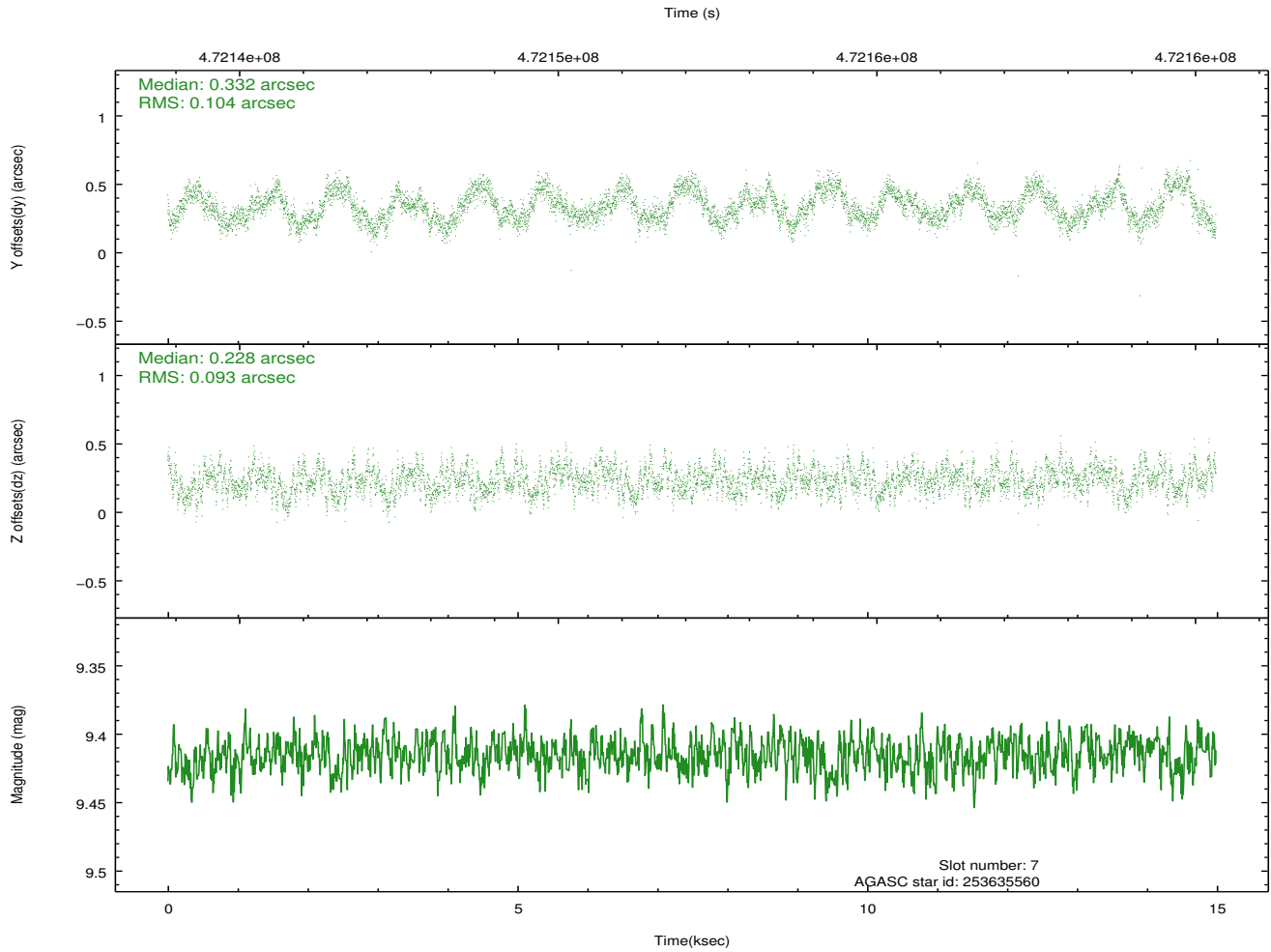
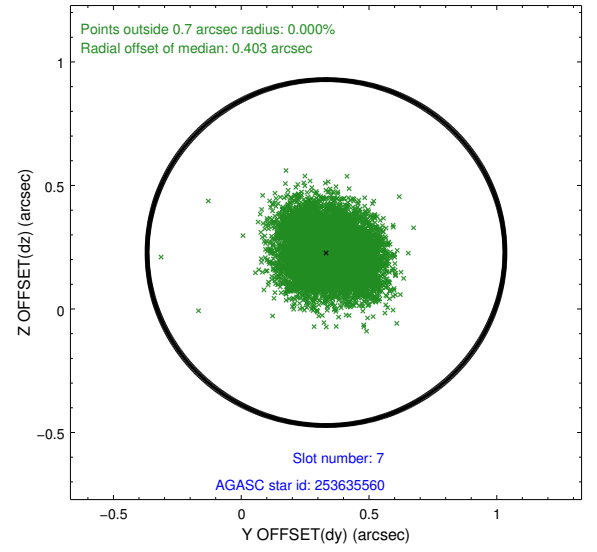
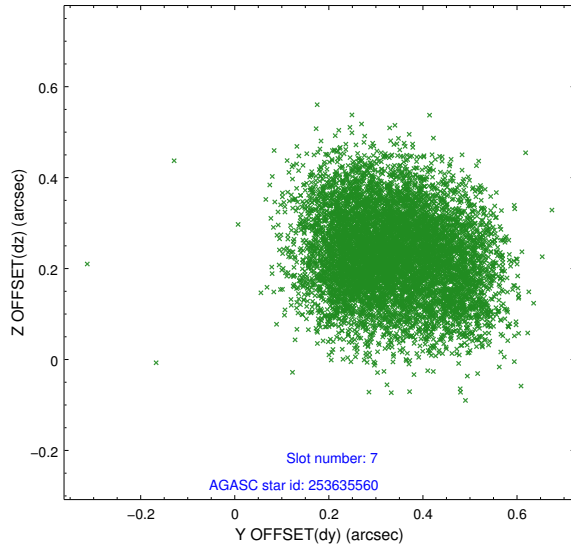
### 2.4.3 Slot 5



## 2.4.4 Slot 6

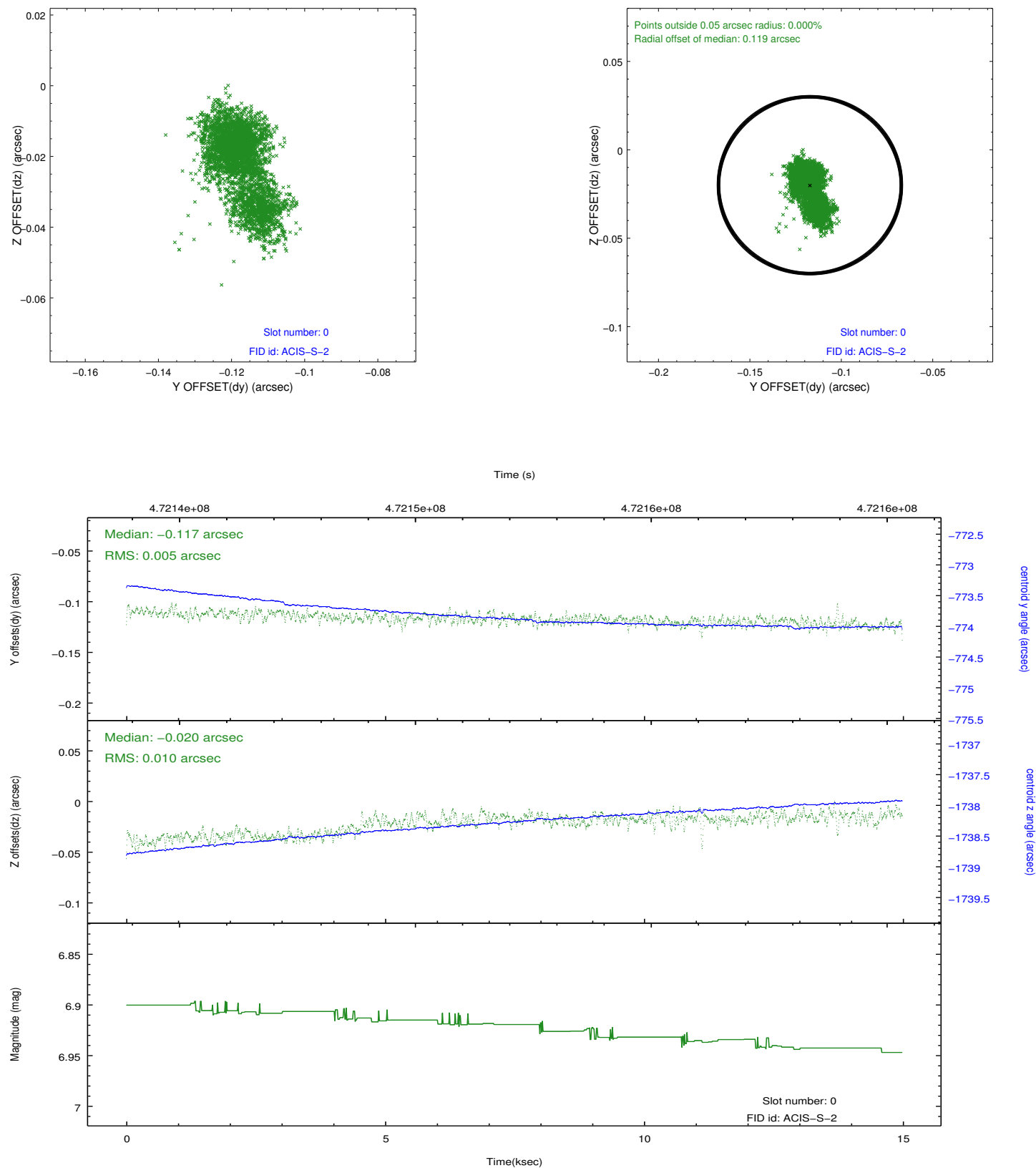


## 2.4.5 Slot 7

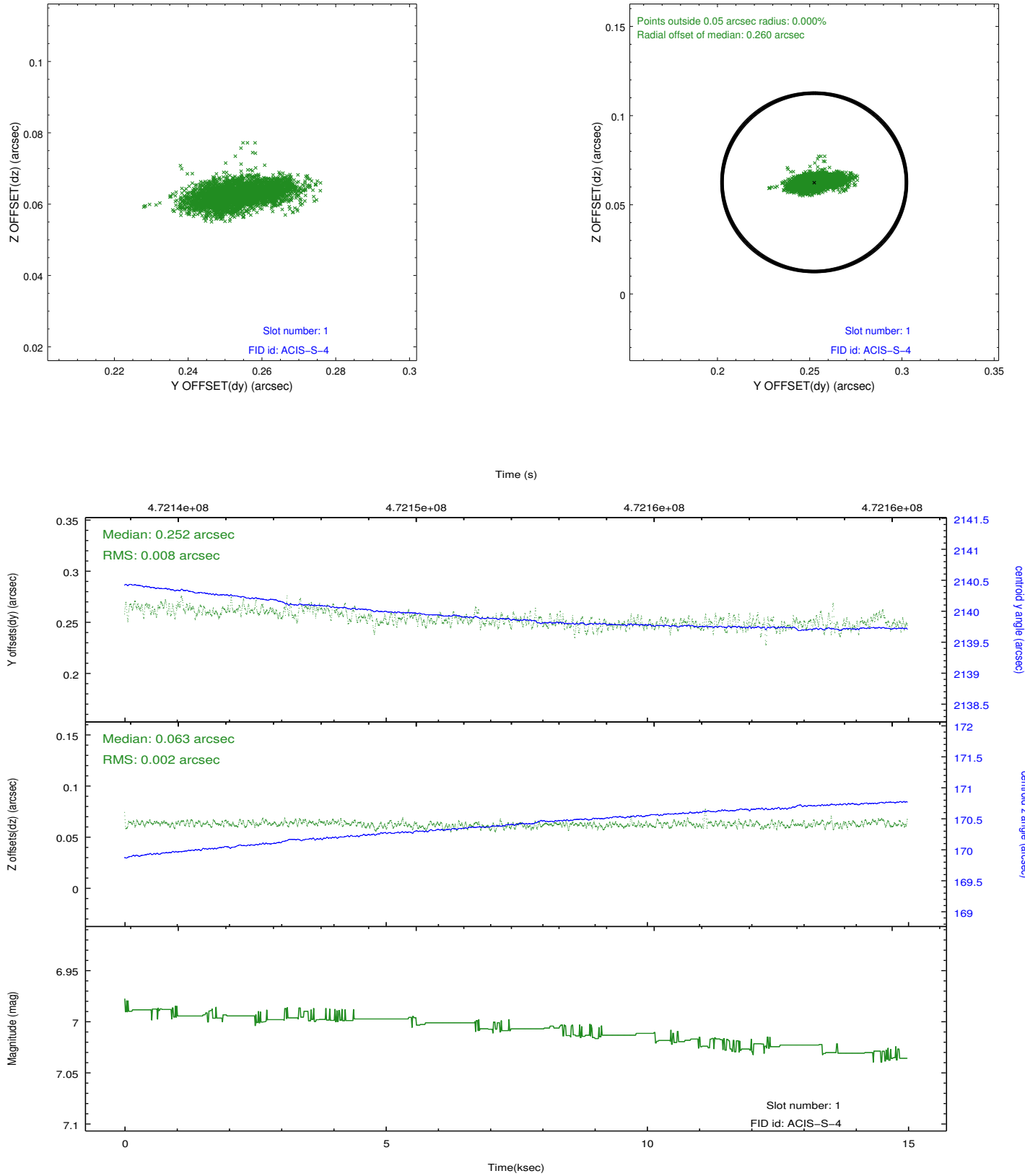


## 2.5 FID Slots

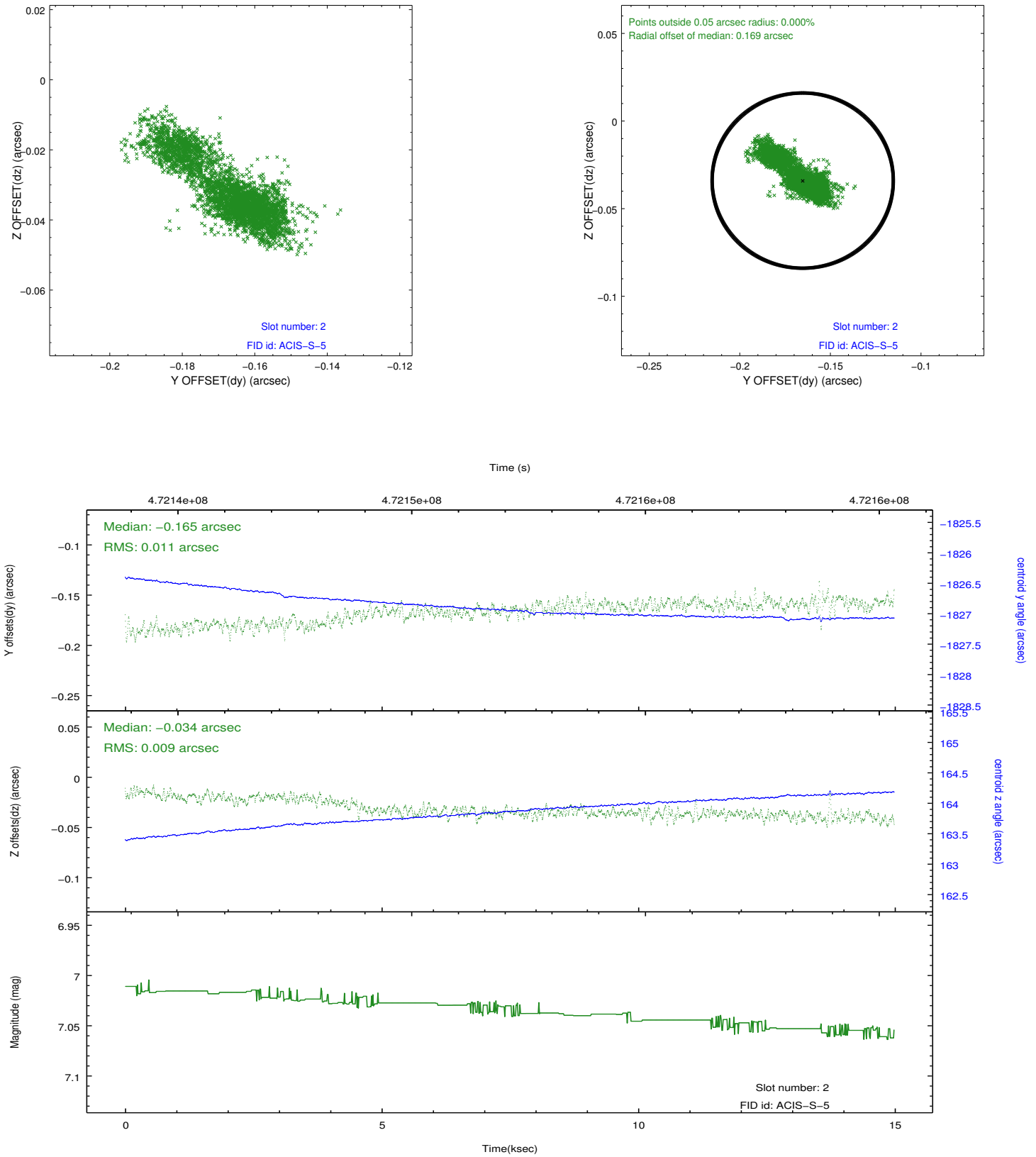
### 2.5.1 Slot 0



## 2.5.2 Slot 1



### 2.5.3 Slot 2



# A Summary

## A.1 Status

V&V Scientist	Jen Lauer
V&V Date (YYYY-MM-DD)	2014.12.04
V&V Edition	1
V&V Disposition and Status	OK
V&V Charge Time	14.858

## A.2 Comments

These data have been reprocessed with new aspect alignment calibration files that correct small mean offsets (up to 0.4 arcsecs) and improve overall astrometric accuracy. The new calibration was determined using data from the time period being reprocessed and was performed using cross-correlation of X-ray sources with radio and optical counterparts.