

V&V Reference Report

L2 ASCDS Version : 8.5.1.1

Observation 15365 - L2 Version 2
Chandra X-Ray Center

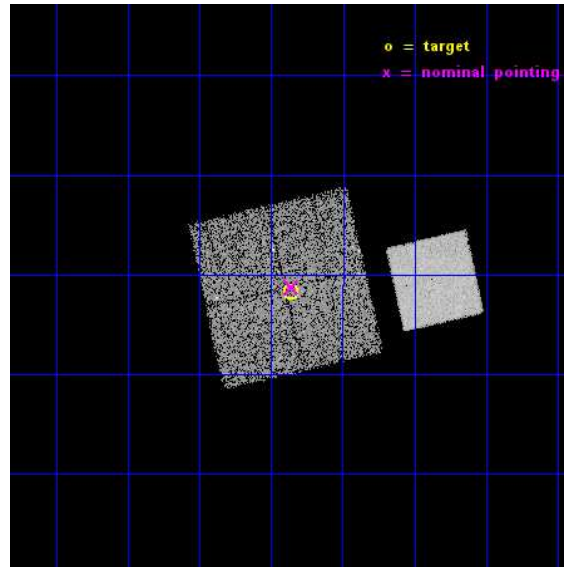
L2 Processing Date : Dec 1 2014

Contents

1	Front	2
2	OBI	3
2.1	OBI	3
2.1.1	Images	3
2.1.2	Bias	3
2.1.3	Parameters	4
2.1.4	Events	4
2.2	Compared Parameters	5
2.3	Aspect	6
2.4	Star Slots	9
2.4.1	Slot 3	9
2.4.2	Slot 4	10
2.4.3	Slot 5	11
2.4.4	Slot 6	12
2.4.5	Slot 7	13
2.5	FID Slots	14
2.5.1	Slot 0	14
2.5.2	Slot 1	15
2.5.3	Slot 2	16
A	Summary	17
A.1	Status	17
A.2	Comments	17

1 Front

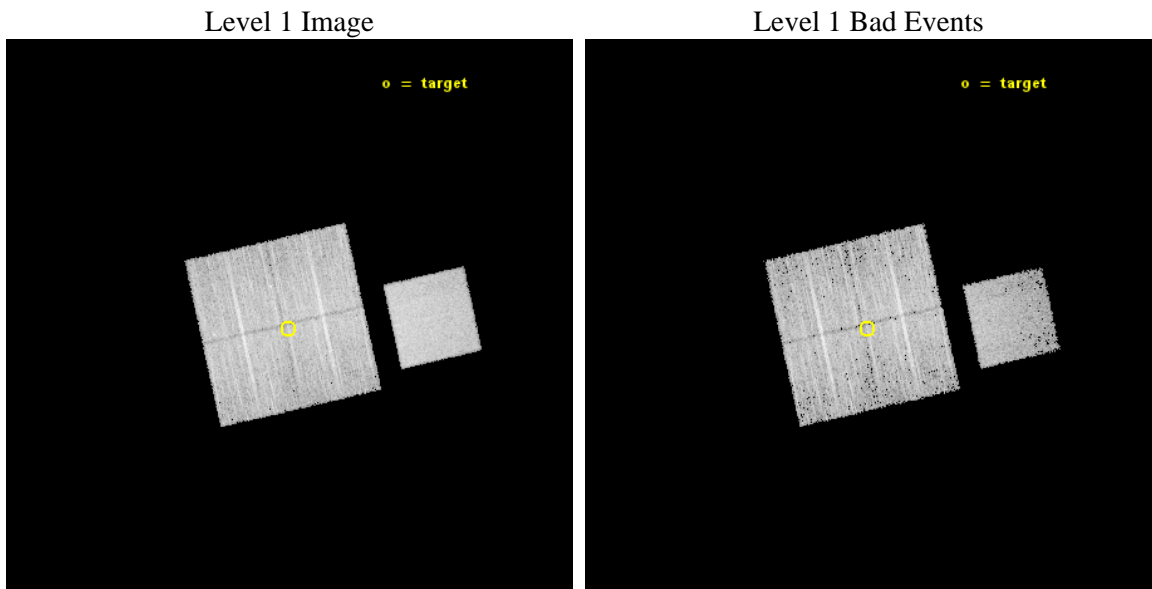
seq_num	502030	Sequence number
obs_id	15365	Observation id
title	Snap-shot survey of galactic gamma-ray sources	Proposal title
observer	Professor Gordon Garmire	Principal investigator
object	HESS J1843-033B	Source name
dtcycle	0	
cycle	P	events from which exps? Prim/Second/Both
ra_targ	280.840417	Observer's specified target RA [deg]
dec_targ	-3.529194	Observer's specified target Dec [deg]
ra_nom	280.83982083986	Nominal RA [deg]
dec_nom	-3.5211213676435	Nominal Dec [deg]
roll_nom	77.251245973829	Nominal Roll [deg]
revision	2	Processing version of data
ontime	11067.000085115	Sum of GTIs [s]
livetime	10922.401581596	Livetime [s]
ontime0	11066.953315556	Sum of GTIs [s]
ontime1	11063.85338515	Sum of GTIs [s]
ontime2	11067.000085115	Sum of GTIs [s]
ontime3	11067.000085115	Sum of GTIs [s]
ontime7	11067.000085115	Sum of GTIs [s]
l2events	53892	Number of level 2 events



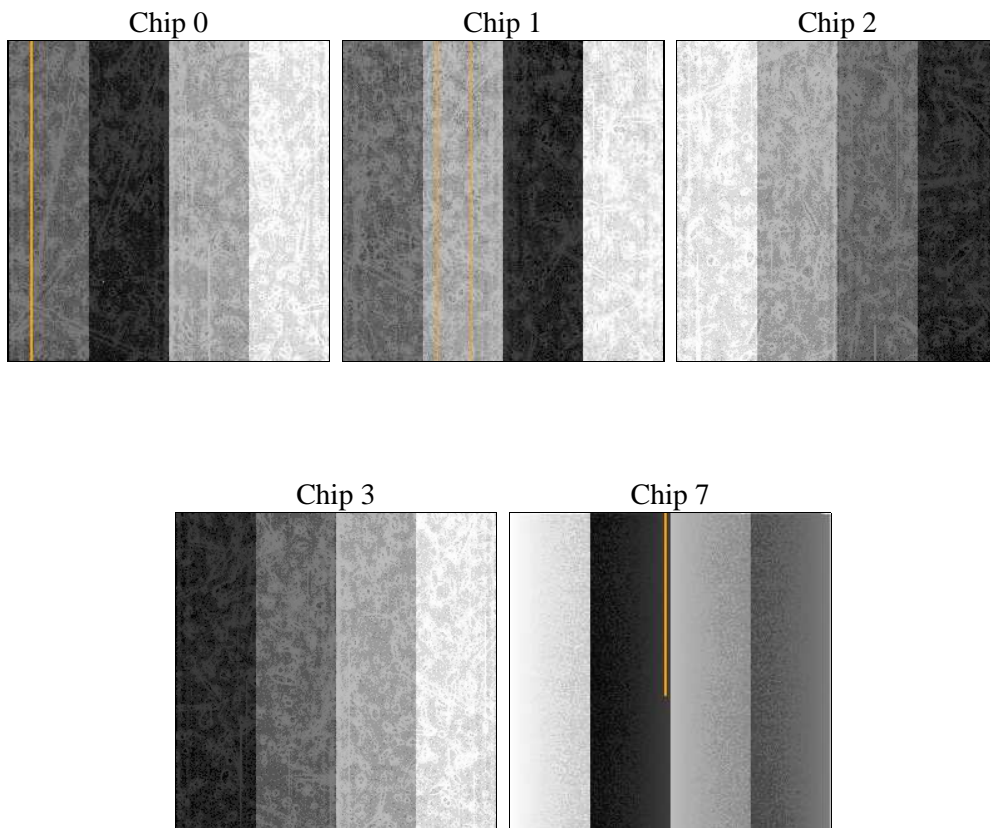
2 OBI

2.1 OBI

2.1.1 Images



2.1.2 Bias



2.1.3 Parameters

obi_num	0	Obi number	sched_exp_time	11000.000000	[s] Scheduled observation exposure time
ascdsver	10.3	Processing system revision	ontime	11067.000085115	Sum of GTIs [s]
caldsver	4.6.4	 	ontime0	11066.953315556	Sum of GTIs [s]
date	2014-12-01T13:27:59	Date and time of file creation	ontime1	11063.85338515	Sum of GTIs [s]
revision	2	Processing version of data	ontime2	11067.000085115	Sum of GTIs [s]
			ontime3	11067.000085115	Sum of GTIs [s]
			ontime7	11067.000085115	Sum of GTIs [s]
			l1events	285127	Number of level 1 events

2.1.4 Events

	ccd 0	ccd 1	ccd 2	ccd 3	ccd 7
level 1 events	54143	53660	56936	54822	65566
rejected events	46874	46341	49934	48062	34514
rejected %	86%	86%	87%	87%	52%

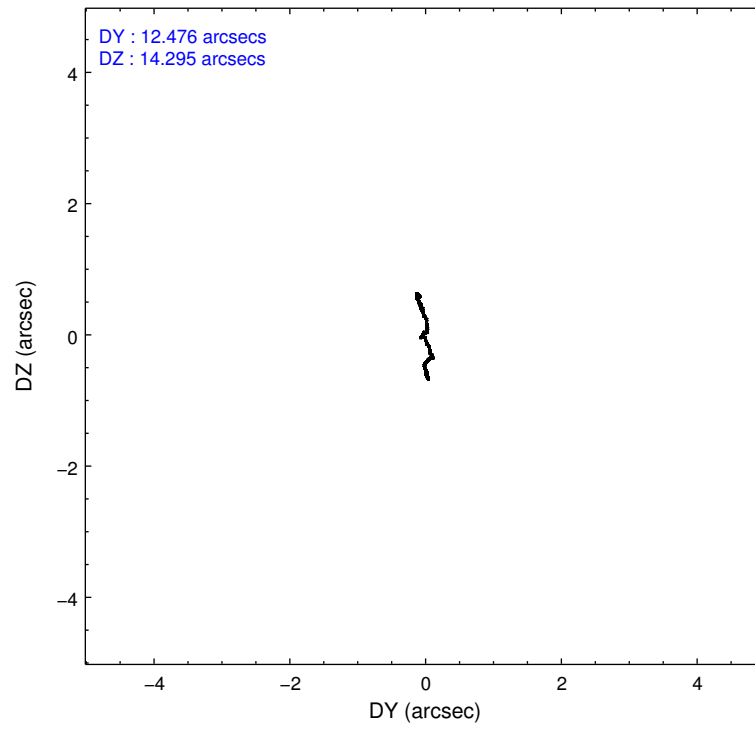
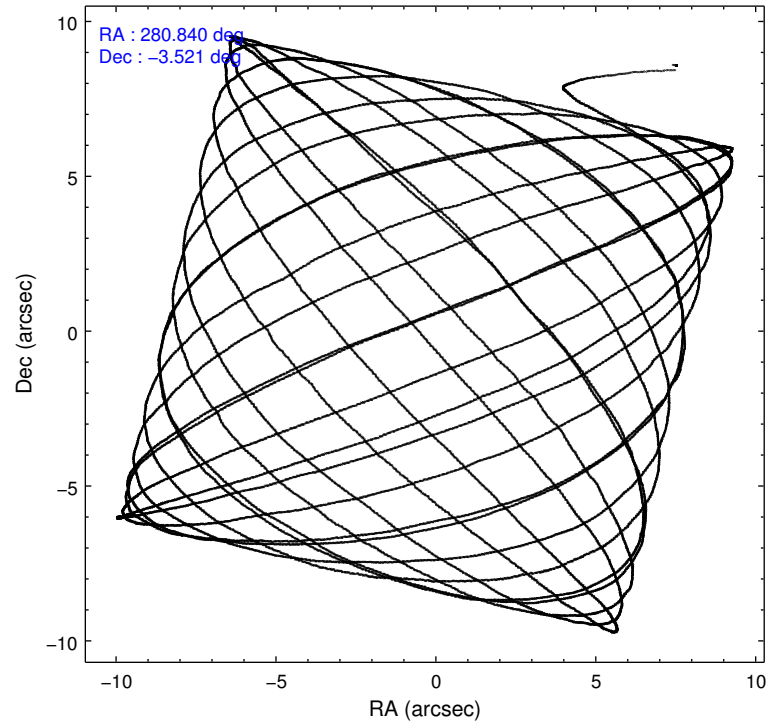
	ccd 0	ccd 1	ccd 2	ccd 3	ccd 7
grade 0 events	3003	2651	2815	2755	3012
	5%	4%	4%	5%	4%
grade 1 events	33	29	28	38	69
	0%	0%	0%	0%	0%
grade 2 events	1656	1646	1634	1421	6615
	3%	3%	2%	2%	10%
grade 3 events	694	731	665	674	2718
	1%	1%	1%	1%	4%
grade 4 events	664	789	673	688	2659
	1%	1%	1%	1%	4%
grade 5 events	2150	2304	1946	2511	6941
	3%	4%	3%	4%	10%
grade 6 events	1254	1505	1218	1229	16061
	2%	2%	2%	2%	24%
grade 7 events	44689	44005	47957	45506	27491
	82%	82%	84%	83%	41%

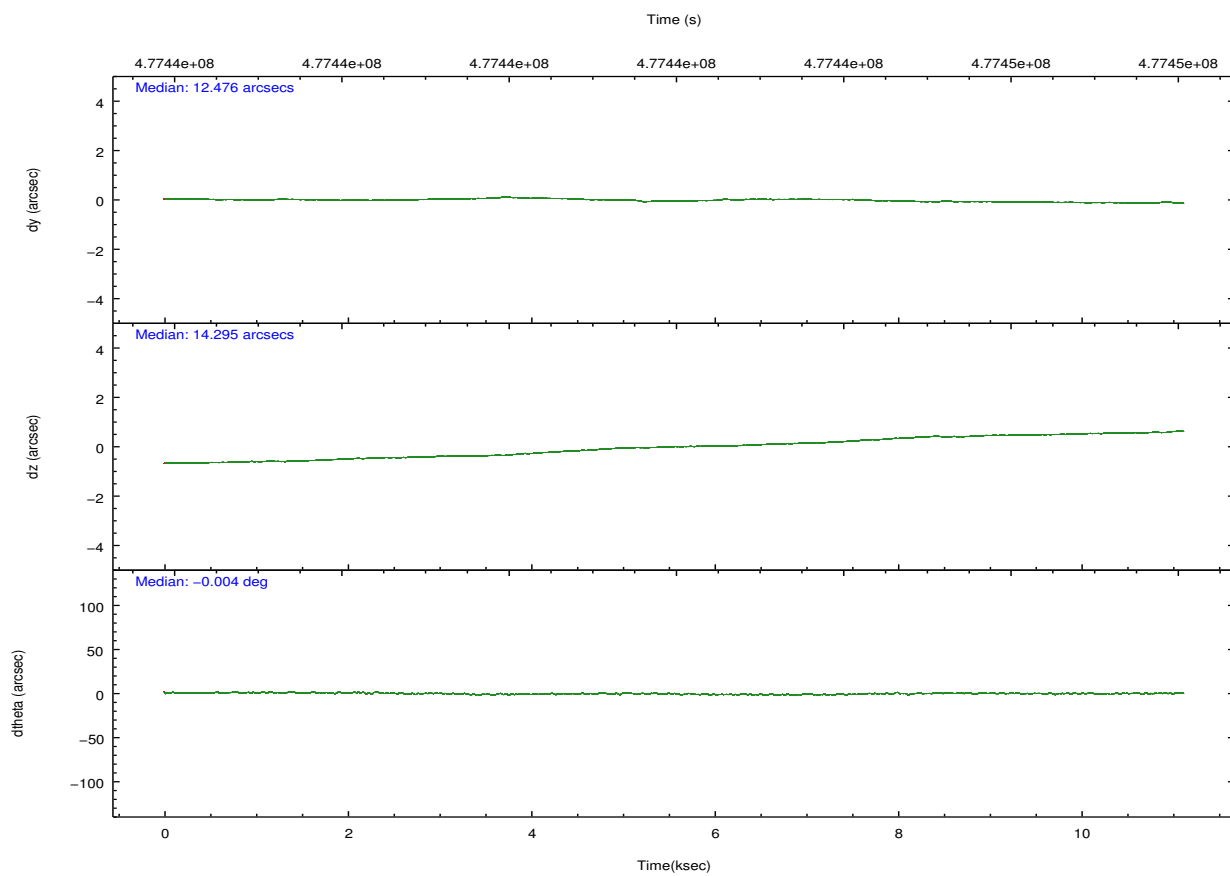
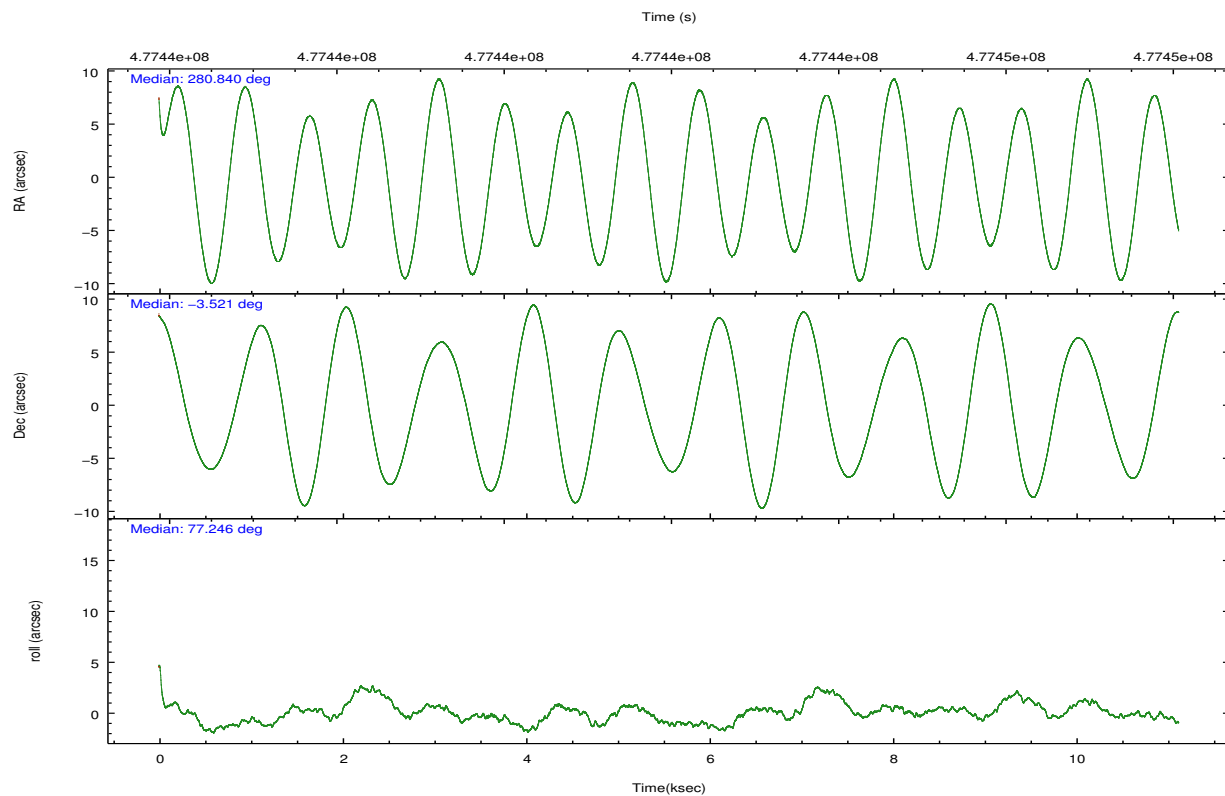
2.2 Compared Parameters

Parameter	Planned	Actual
Instrument	ACIS	ACIS
Detector	ACIS-01237	ACIS-01237
Grating	NONE	NONE
Data mode	VFAINT	VFAINT
Observation mode	POINTING	POINTING
[deg] Pointing RA	280.848052	280.8398208398637
[deg] Pointing Dec	-3.547366	-3.521121367643496
[deg] Pointing Roll	77.043069	77.2512459738288
[mm] SIM focus pos	-0.782348	-0.7809083437167272
[mm] SIM defocus	0	0.001439871863259334
[mm] SIM translation stage pos	-233.592463	-233.5874344608287
[mm] SIM translation stage offset	0	-0.005018542100998502
[s] Observation start time (MET)	477436523.184000	477435234.2598
Observation start date	2013-02-16T21:14:16	2013-02-16T20:53:54
[s] Observation end time (MET)	477447523.184000	477448643.82303
Observation end date	2013-02-17T00:17:36	2013-02-17T00:37:23
Read mode	TIMED	TIMED

Parameter	Planned	Actual
Obspar format version number	7	7
Obspar file type	PREDICTED	ACTUAL
Obspar update status	NONE	UPDATED
CCD I0 on	Y	Y
CCD I1 on	Y	Y
CCD I2 on	Y	Y
CCD I3 on	Y	Y
CCD S0 on	N	N
CCD S1 on	N	N
CCD S2 on	N	N
CCD S3 on	O1	Y
CCD S4 on	N	N
CCD S5 on	N	N
Number of optional ACIS chips dropped	0	0
On-chip summing requested	N	N
Subarray requested	NONE	NONE
Alternating exposures requested	N	N
[s] Primary exposure time	0.000000	3.1

2.3 Aspect



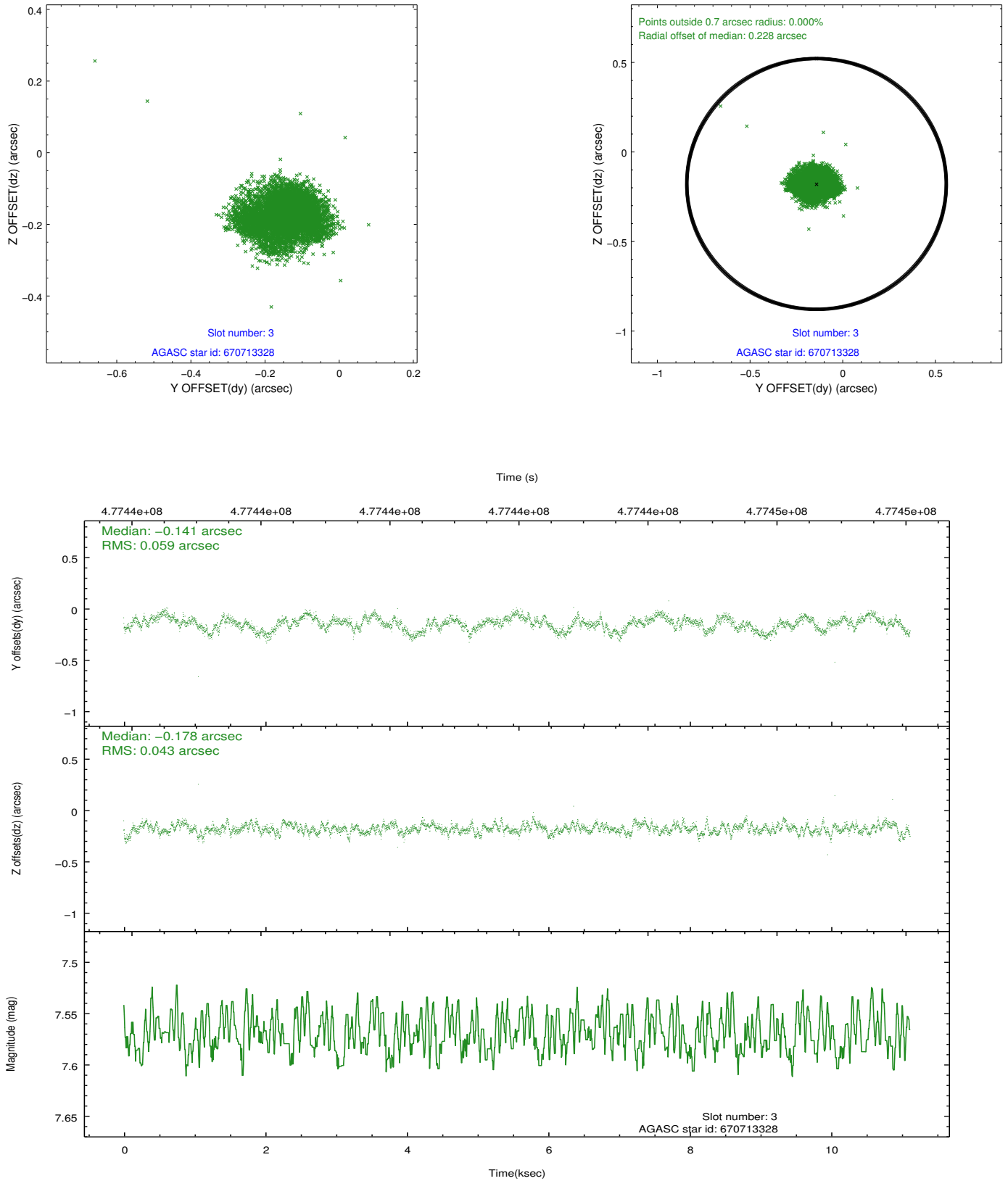


Slot Statistics

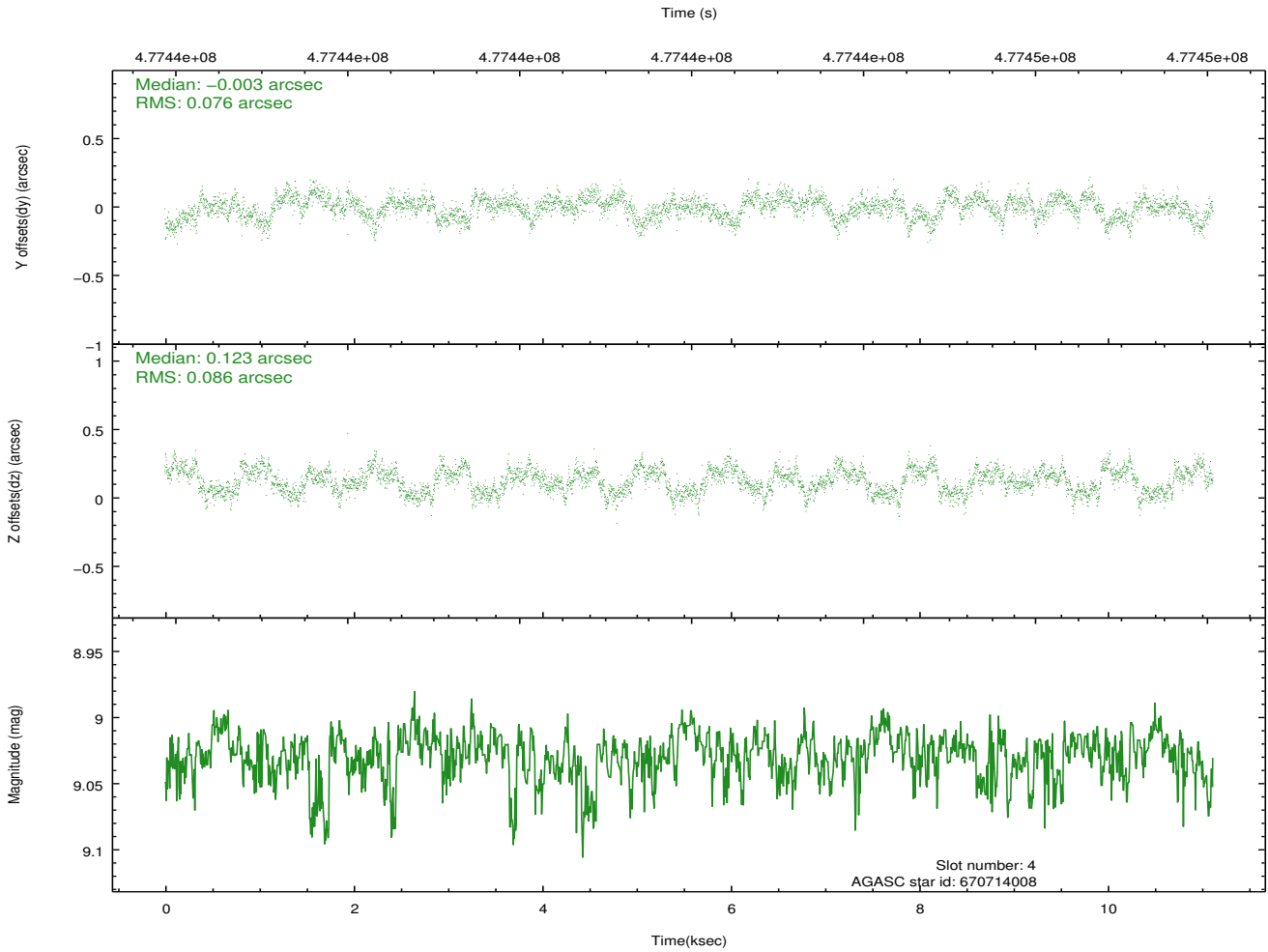
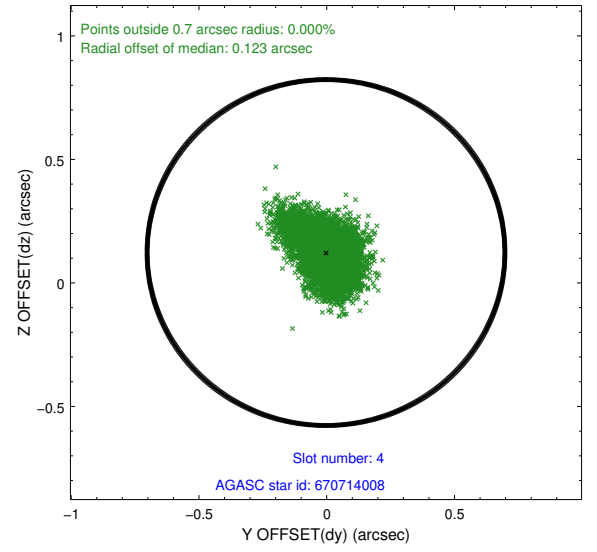
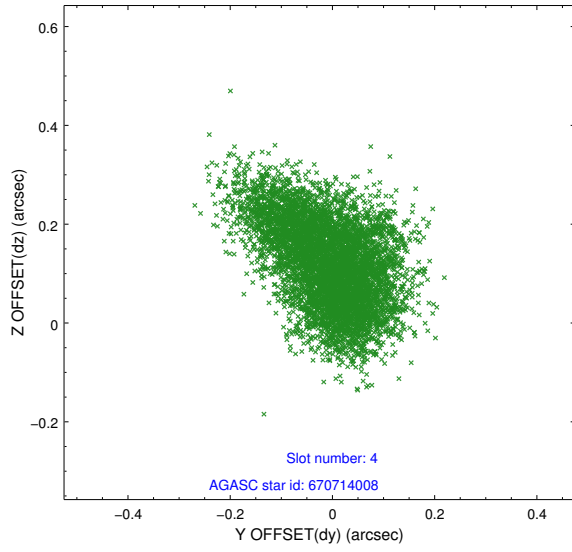
slot	status	used	id	mag	n_pts	med_dy	med_dz	dr1	dr2	ra	dec	mean_y	mean_z
0	FID		ACIS-I-1	7.18	2713	0.080	0.016	0.009	0.014	0.000000	0.000000	927.19	-837.79
1	FID		ACIS-I-2	7.08	2713	-0.064	-0.094	0.013	0.021	0.000000	0.000000	-766.79	-844.64
2	FID		ACIS-I-5	7.16	2713	-0.109	0.150	0.009	0.017	0.000000	0.000000	-1821.56	1059.48
3	GUIDE	used	670713328	7.57	5425	-0.141	-0.178	0.079	0.123	280.824681	-3.187771	1243.05	372.61
4	GUIDE	used	670714008	9.03	5423	-0.003	0.123	0.123	0.195	281.129237	-3.153193	1609.81	-666.19
5	GUIDE	used	670714176	8.57	5421	0.069	-0.234	0.068	0.115	280.233424	-3.684215	-975.64	2041.17
6	GUIDE	used	670830264	8.74	5421	-0.071	0.199	0.137	0.205	281.361536	-3.231556	1521.37	-1542.77
7	GUIDE	used	671222088	8.35	5422	0.150	0.089	0.071	0.120	280.484932	-4.110652	-2268.33	815.94

2.4 Star Slots

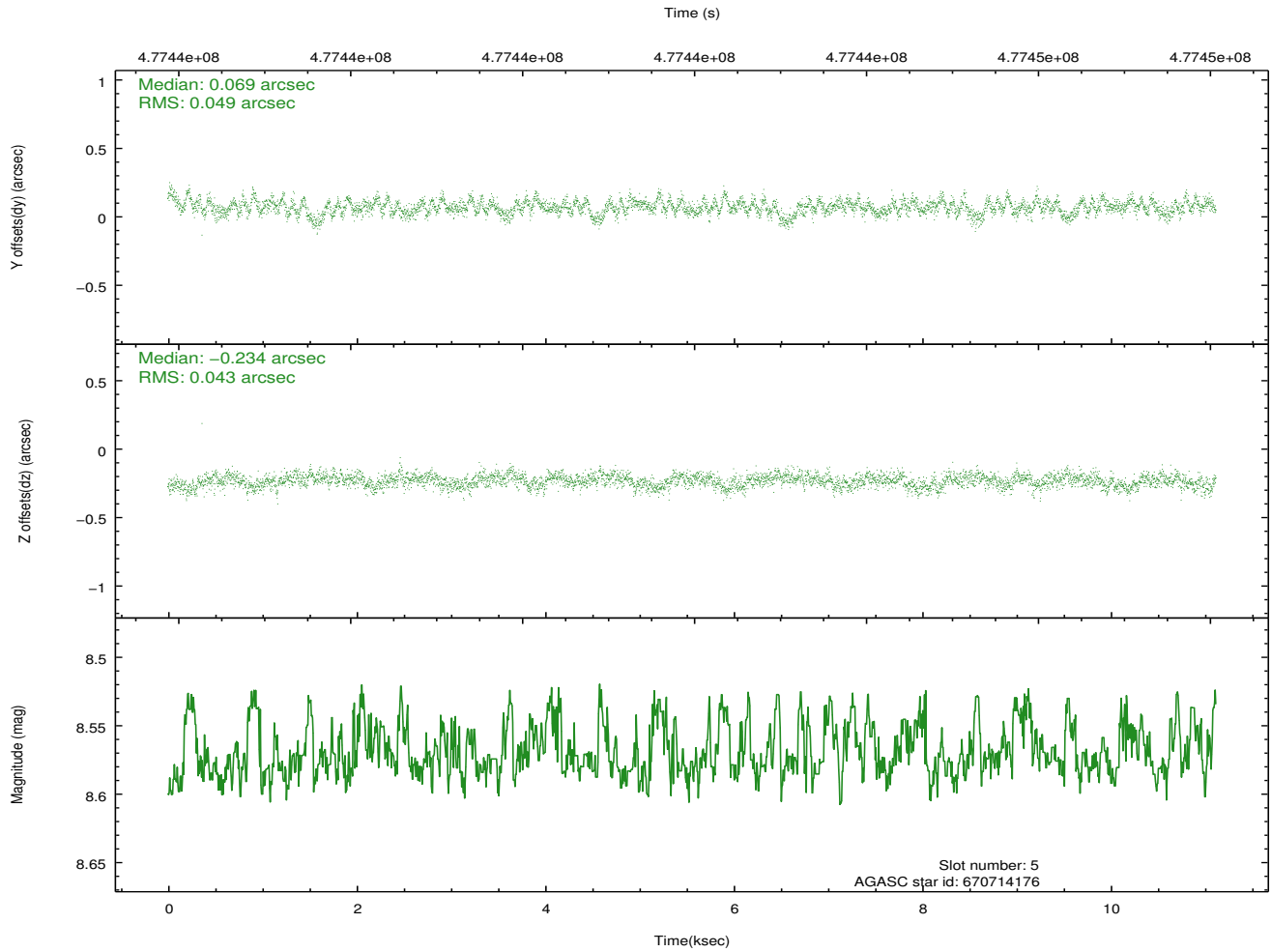
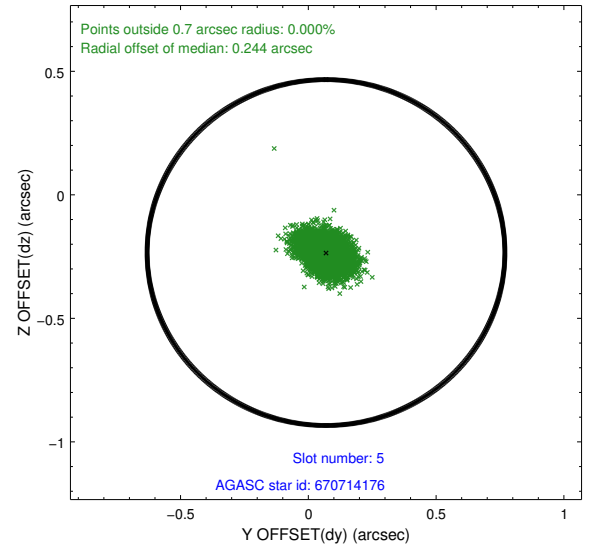
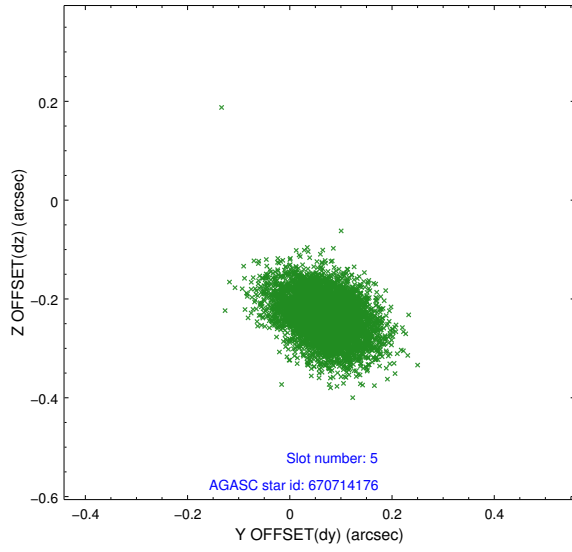
2.4.1 Slot 3



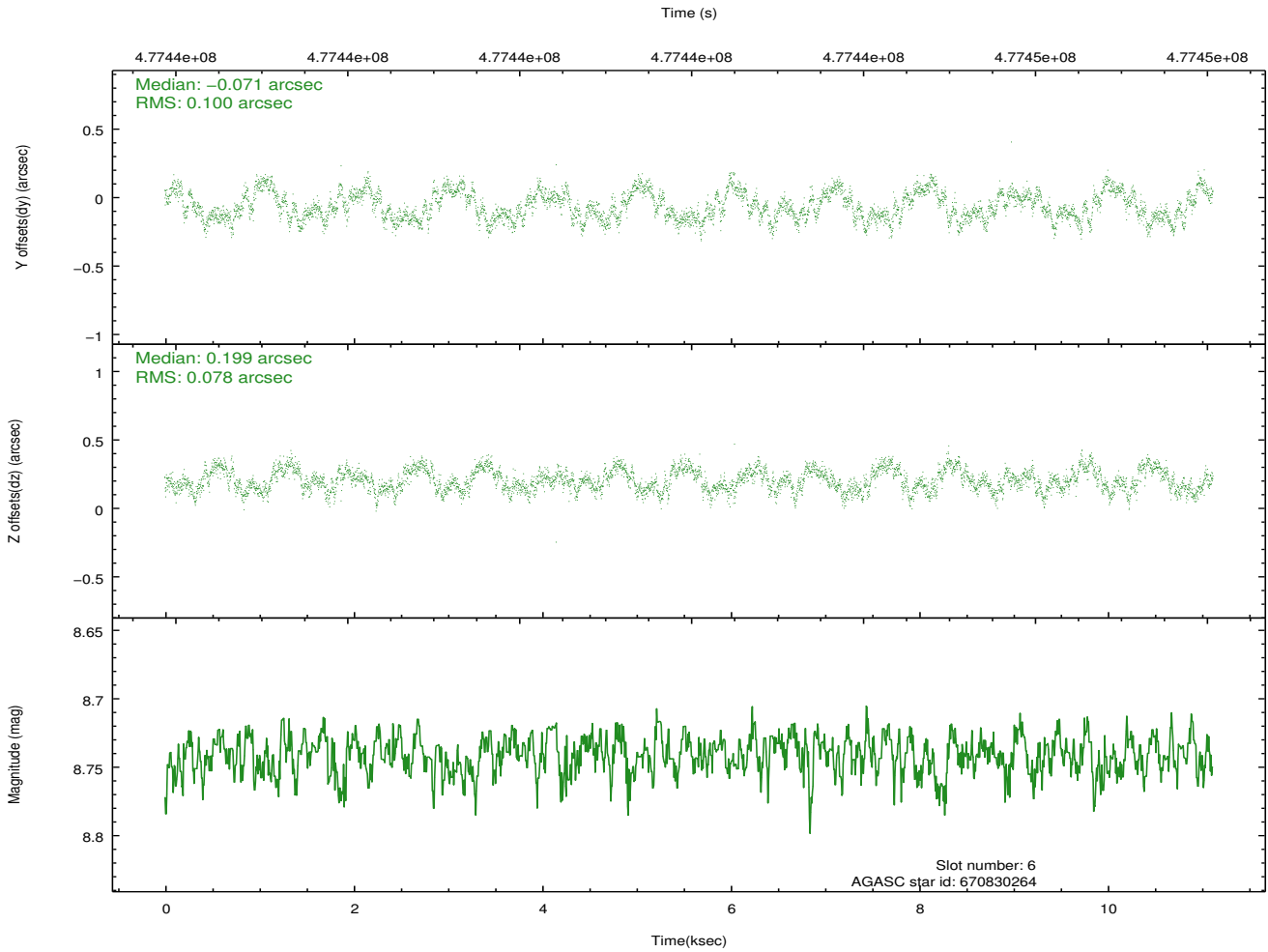
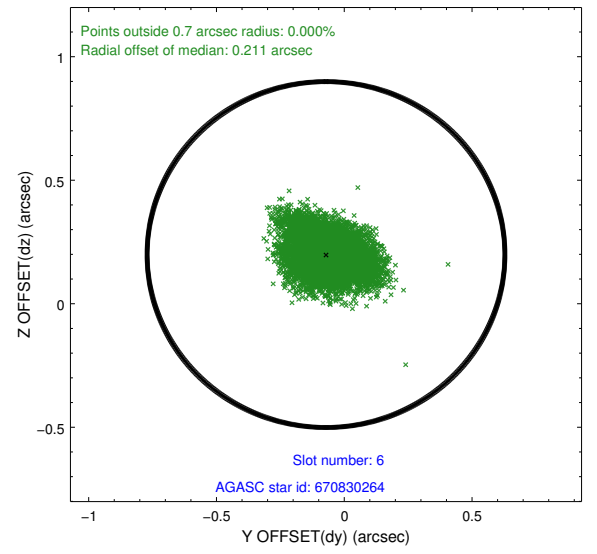
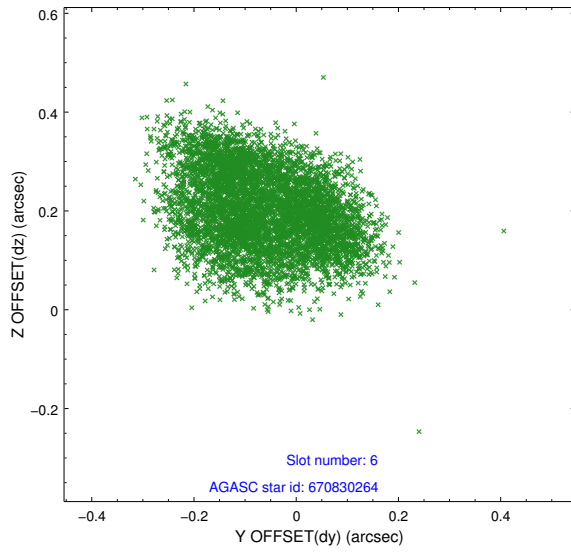
2.4.2 Slot 4



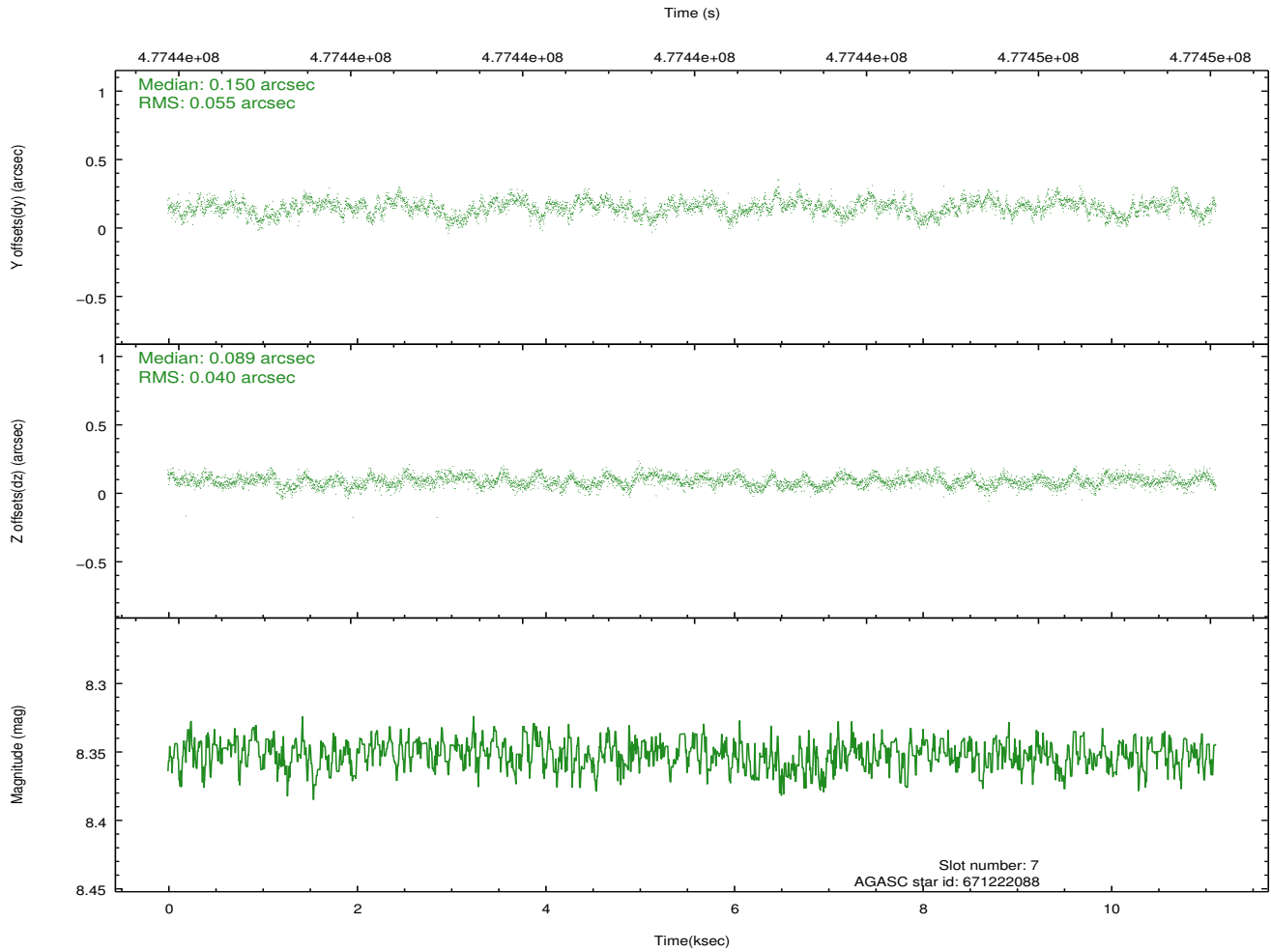
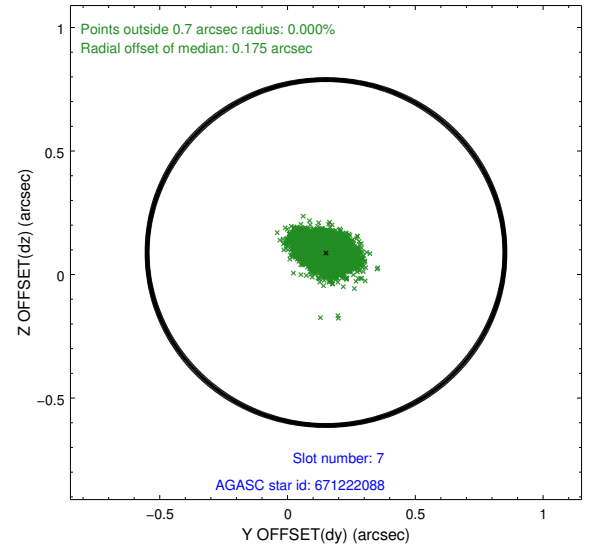
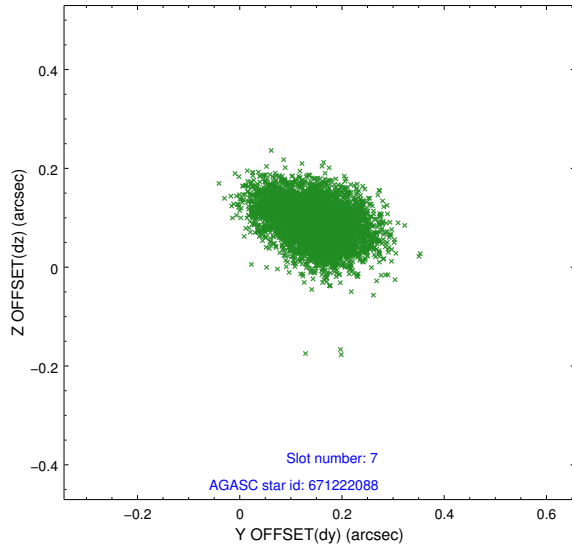
2.4.3 Slot 5



2.4.4 Slot 6

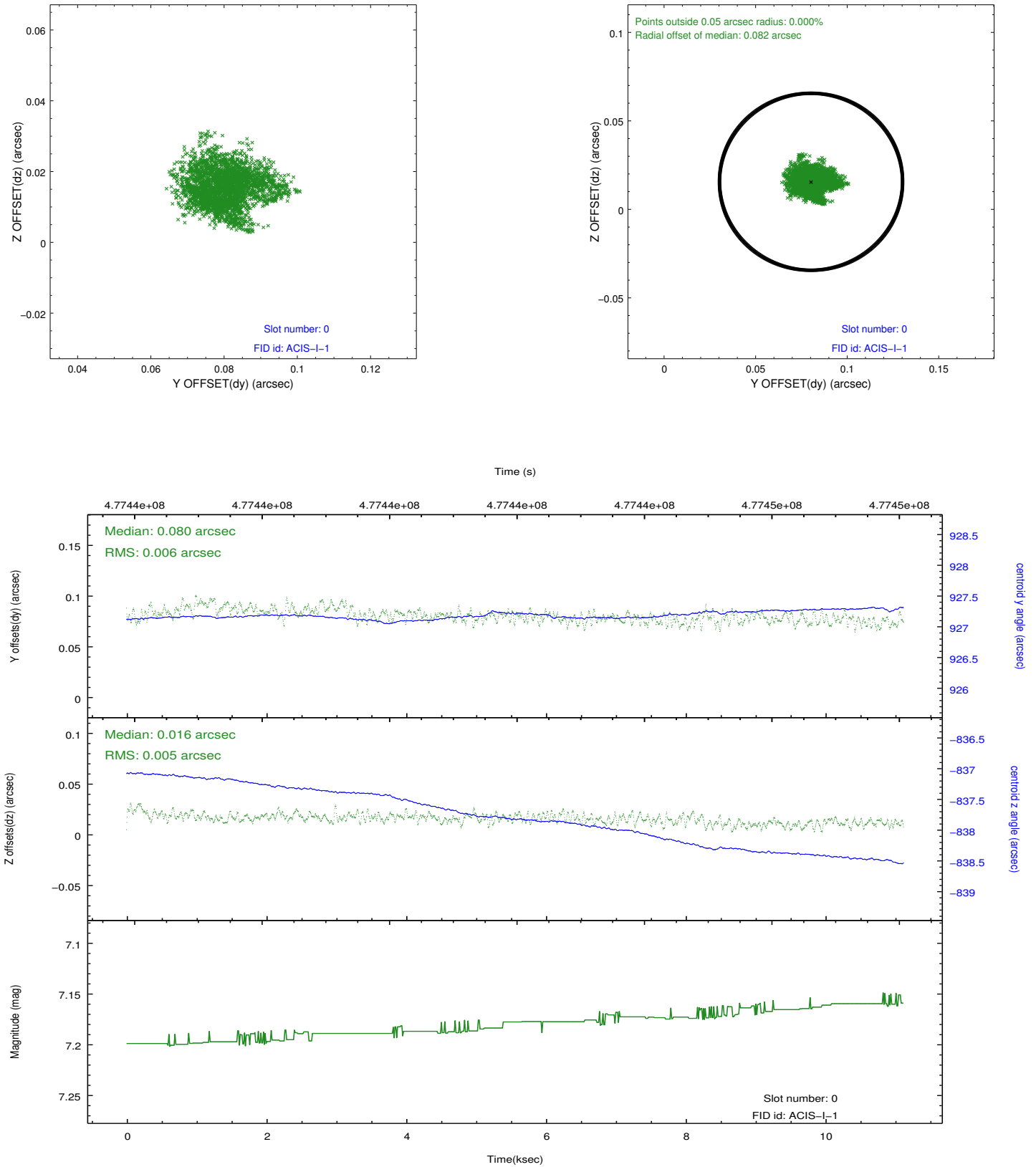


2.4.5 Slot 7

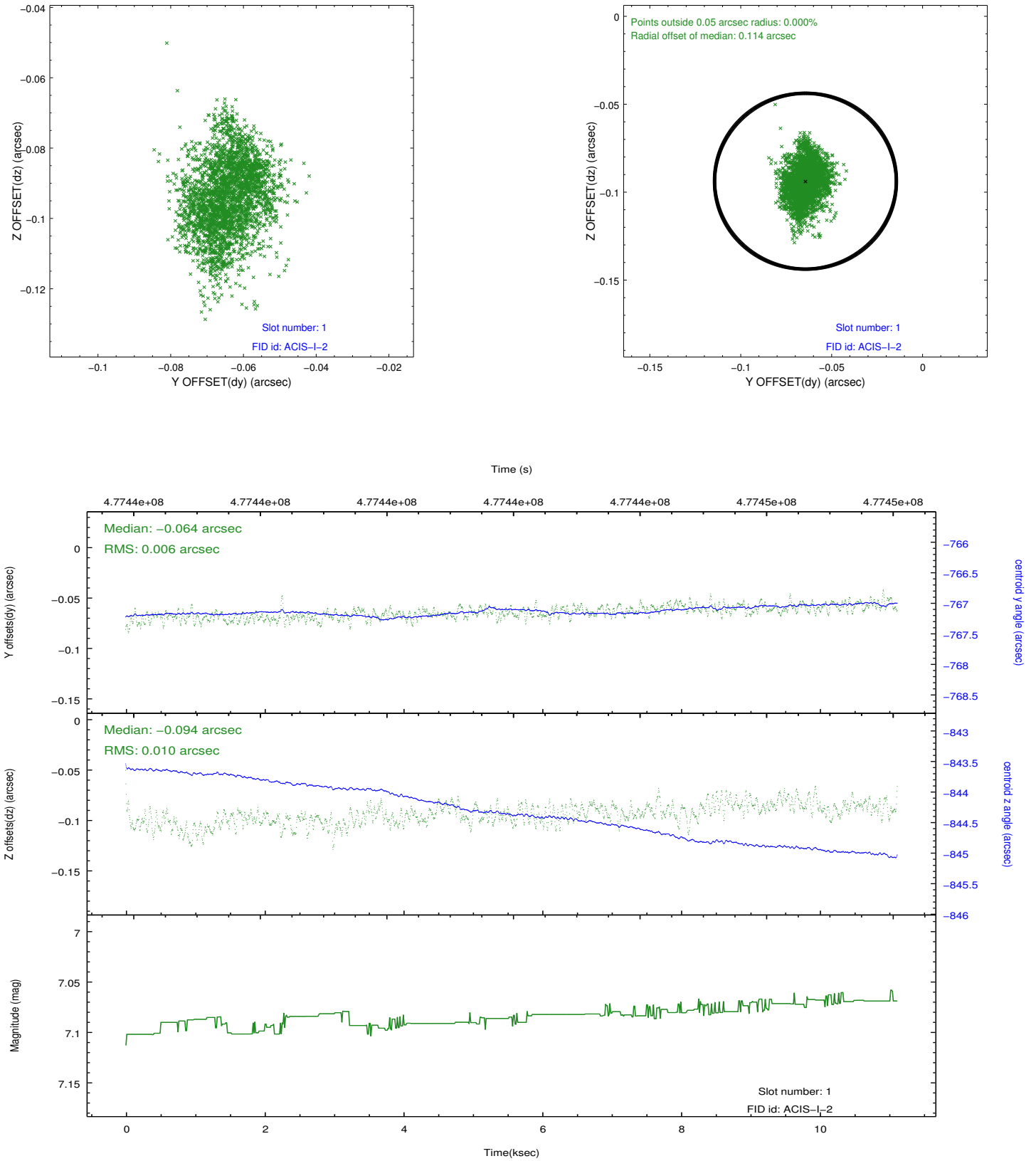


2.5 FID Slots

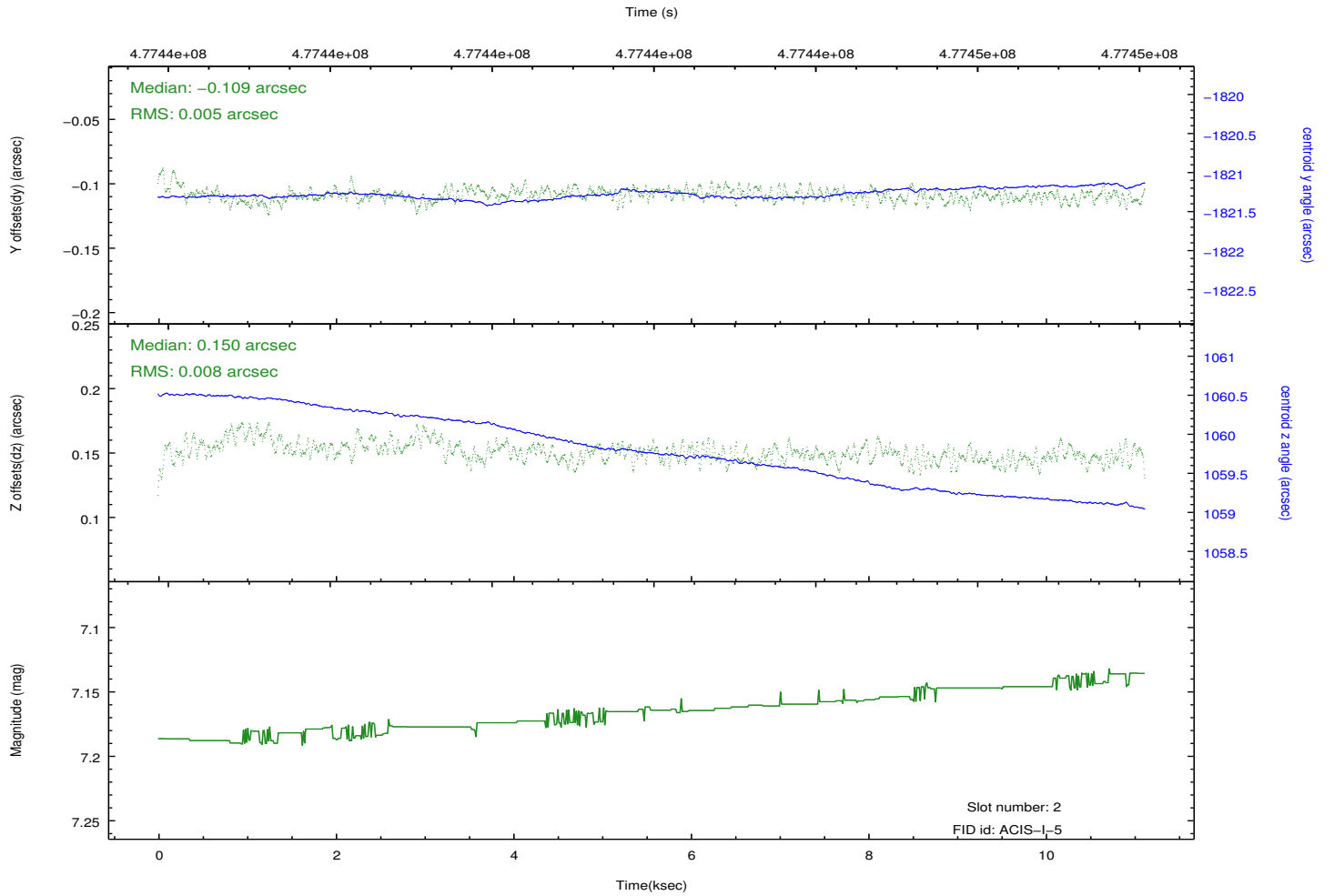
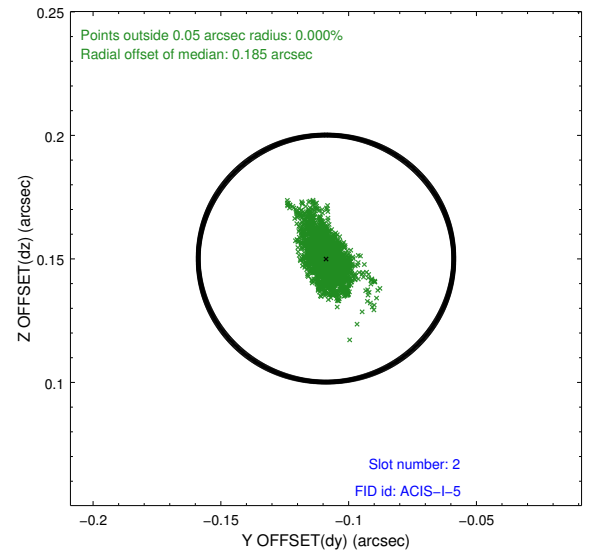
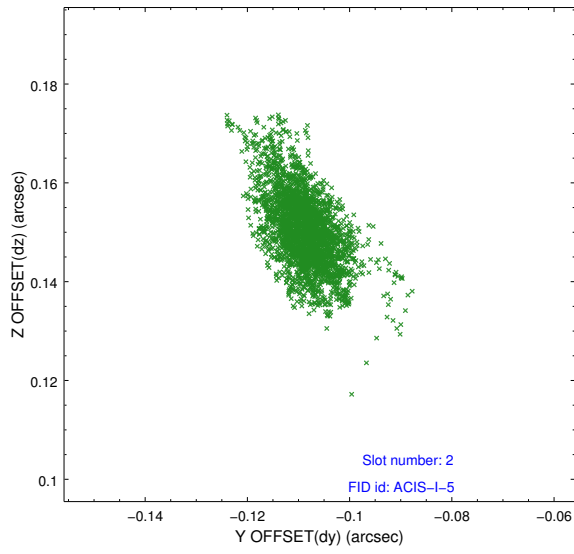
2.5.1 Slot 0



2.5.2 Slot 1



2.5.3 Slot 2



A Summary

A.1 Status

V&V Scientist	Beth Sundheim
V&V Date (YYYY-MM-DD)	2014.12.09
V&V Edition	1
V&V Disposition and Status	OK
V&V Charge Time	11.067000085115

A.2 Comments

These data have been reprocessed with new aspect alignment calibration files that correct small mean offsets (up to 0.4 arcsecs) and improve overall astrometric accuracy. The new calibration was determined using data from the time period being reprocessed and was performed using cross-correlation of X-ray sources with radio and optical counterparts.