

V&V Reference Report

L2 ASCDS Version : 8.4.5

Observation 14813 - L2 Version 2
Chandra X-Ray Center

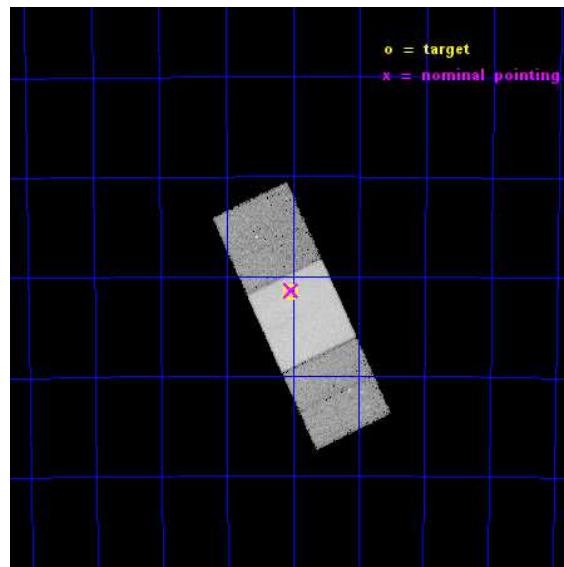
L2 Processing Date : Nov 29 2014

Contents

1	Front	2
2	OBI	3
2.1	OBI	3
2.1.1	Images	3
2.1.2	Bias	3
2.1.3	Parameters	4
2.1.4	Events	4
2.2	Compared Parameters	5
2.3	Aspect	6
2.4	Star Slots	9
2.4.1	Slot 3	9
2.4.2	Slot 4	10
2.4.3	Slot 5	11
2.4.4	Slot 6	12
2.4.5	Slot 7	13
2.5	FID Slots	14
2.5.1	Slot 0	14
2.5.2	Slot 1	15
2.5.3	Slot 2	16
A	Summary	17
A.1	Status	17
A.2	Comments	17

1 Front

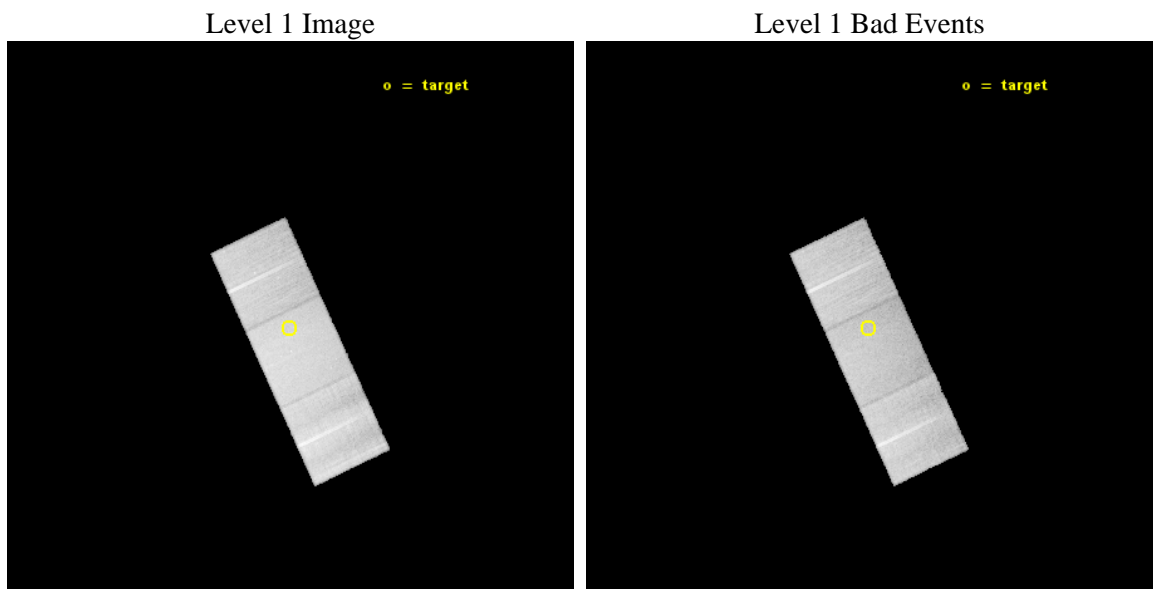
seq_num	501941	Sequence number
obs_id	14813	Observation id
title	Search for X-ray counterparts of potential radio-quiet gamma-ray MSPs in Fermi LAT sources, using Chandra	Proposal title
observer	Dr. Pablo Saz Parkinson	Principal investigator
object	2FGL J0934.0-6231	Source name
dtcycle	0	
cycle	P	events from which exps? Prim/Second/Both
ra_targ	143.50875	Observer's specified target RA [deg]
dec_targ	-62.526306	Observer's specified target Dec [deg]
ra_nom	143.50524093307	Nominal RA [deg]
dec_nom	-62.523736375718	Nominal Dec [deg]
roll_nom	64.866655282879	Nominal Roll [deg]
revision	2	Processing version of data
ontime	43629.40033555	Sum of GTIs [s]
livetime	43059.350100669	Livetime [s]
ontime6	43623.118355155	Sum of GTIs [s]
ontime7	43629.40033555	Sum of GTIs [s]
ontime8	43629.40033555	Sum of GTIs [s]
l2events	179373	Number of level 2 events



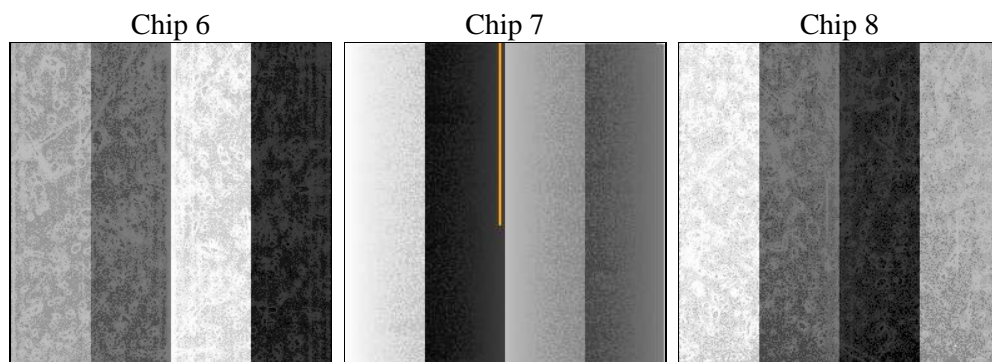
2 OBI

2.1 OBI

2.1.1 Images



2.1.2 Bias



2.1.3 Parameters

obi_num	0	Obi number	sched_exp_time	43514.000000	[s] Scheduled observation exposure time
ascdsver	10.3	Processing system revision	ontime	43629.40033555	Sum of GTIs [s]
caldbver	4.6.4	 	ontime6	43623.118355155	Sum of GTIs [s]
date	2014-11-30T02:44:23	Date and time of file creation	ontime7	43629.40033555	Sum of GTIs [s]
revision	2	Processing version of data	ontime8	43629.40033555	Sum of GTIs [s]
			l1events	810963	Number of level 1 events

2.1.4 Events

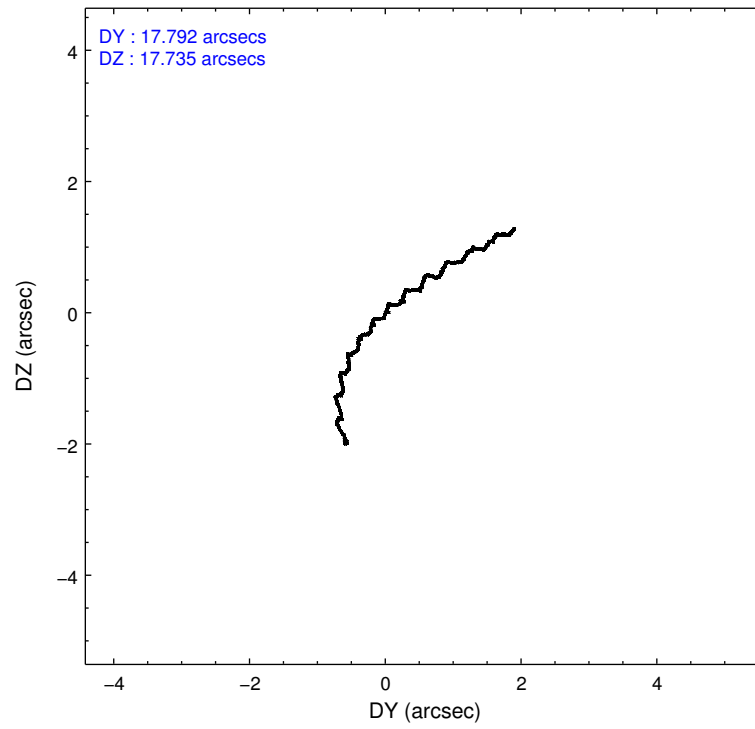
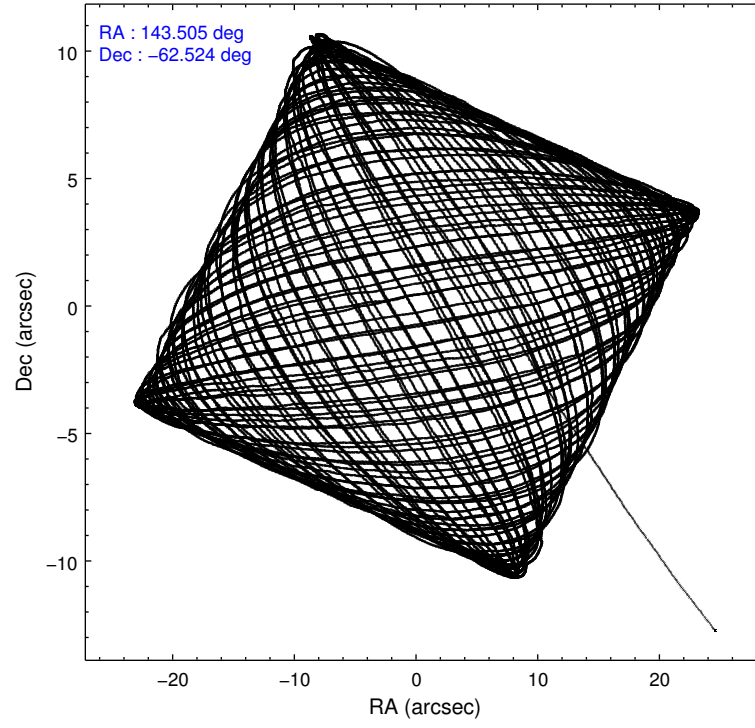
	ccd 6	ccd 7	ccd 8
level 1 events	223071	294284	293608
rejected events	195571	163237	214019
rejected %	87%	55%	72%

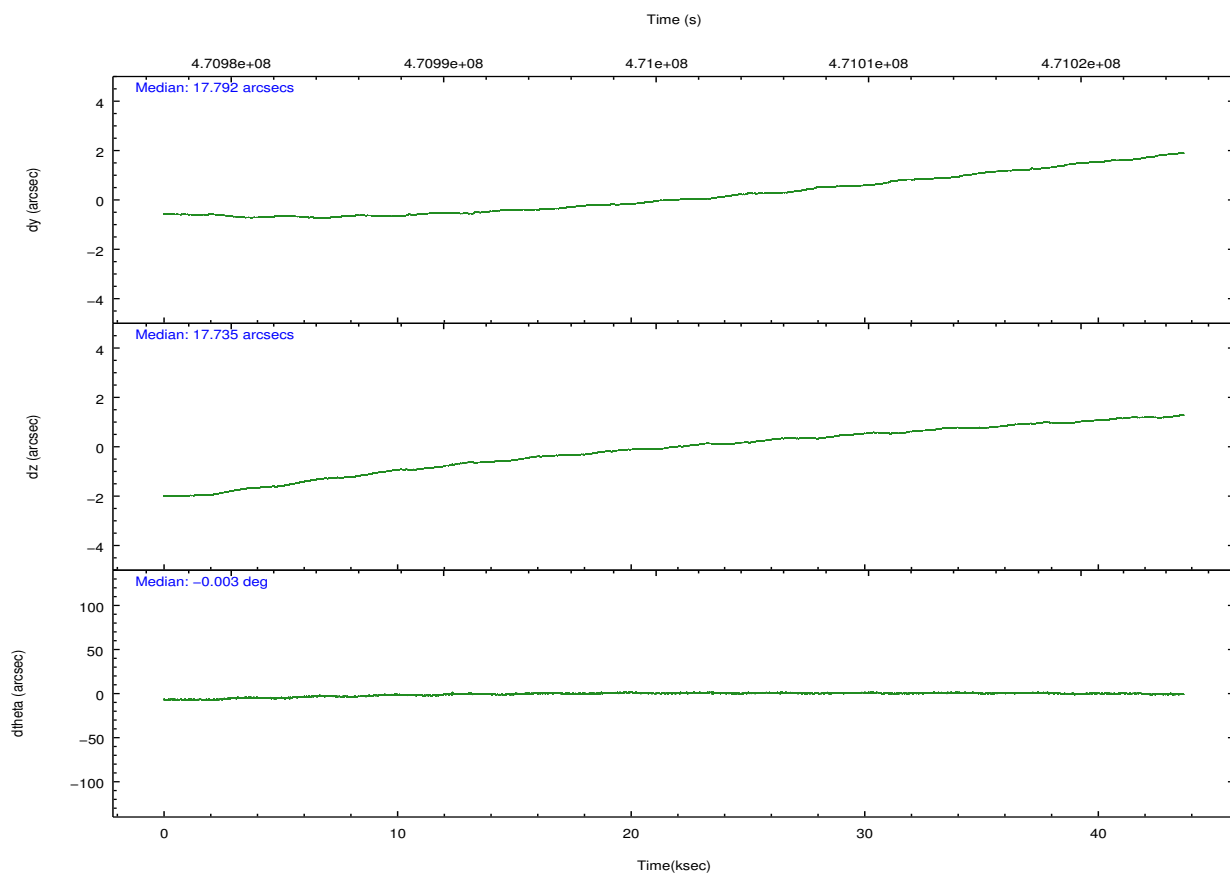
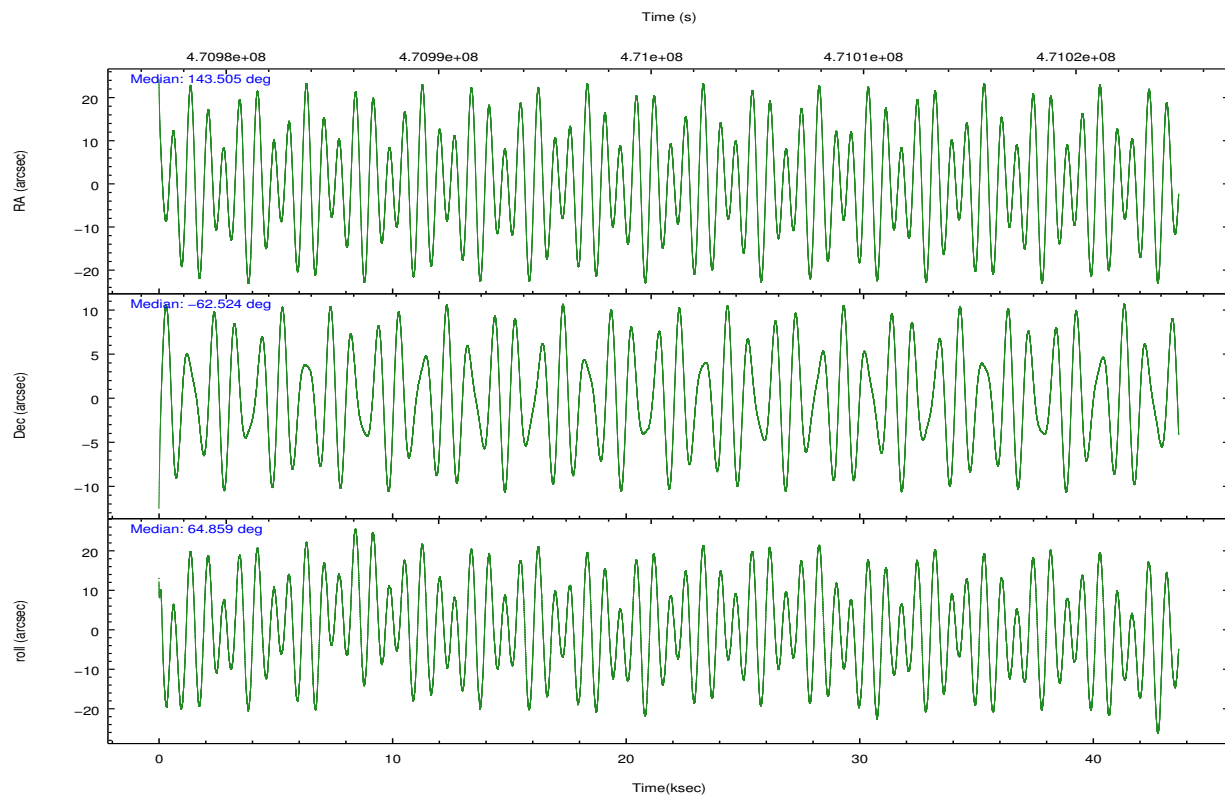
	ccd 6	ccd 7	ccd 8
grade 0 events	9333	12046	23953
	4%	4%	8%
grade 1 events	123	346	222
	0%	0%	0%
grade 2 events	6185	26675	18413
	2%	9%	6%
grade 3 events	2856	11560	8242
	1%	3%	2%
grade 4 events	2768	11277	7941
	1%	3%	2%
grade 5 events	11352	30968	16622
	5%	10%	5%
grade 6 events	6362	69496	21043
	2%	23%	7%
grade 7 events	184092	131916	197172
	82%	44%	67%

2.2 Compared Parameters

Parameter	Planned	Actual	Parameter	Planned	Actual
Instrument	ACIS	ACIS	Obspar format version number	7	7
Detector	ACIS-678	ACIS-678	Obspar file type	PREDICTED	ACTUAL
Grating	NONE	NONE	Obspar update status	NONE	UPDATED
Data mode	VFAINT	VFAINT	Number of optional ACIS chips dropped	0	0
Observation mode	POINTING	POINTING	On-chip summing requested	N	N
[deg] Pointing RA	143.511087	143.5052409330746	Subarray requested	NONE	NONE
[deg] Pointing Dec	-62.550964	-62.52373637571778	Alternating exposures requested	N	N
[deg] Pointing Roll	64.715220	64.86665528287898	[s] Primary exposure time	0.000000	3.1
[mm] SIM focus pos	-0.684267	-0.6828225247311905			
[mm] SIM defocus	0	0.001444936568705701			
[mm] SIM translation stage pos	-190.132523	-190.1400660498719			
[mm] SIM translation stage offset	0	0.00754346686406393			
[s] Observation start time (MET)	470979147.184000	470978041.92411			
Observation start date	2012-12-04T03:31:20	2012-12-04T03:14:01			
[s] Observation end time (MET)	471022661.184000	471023491.45155			
Observation end date	2012-12-04T15:36:34	2012-12-04T15:51:31			
Read mode	TIMED	TIMED			

2.3 Aspect



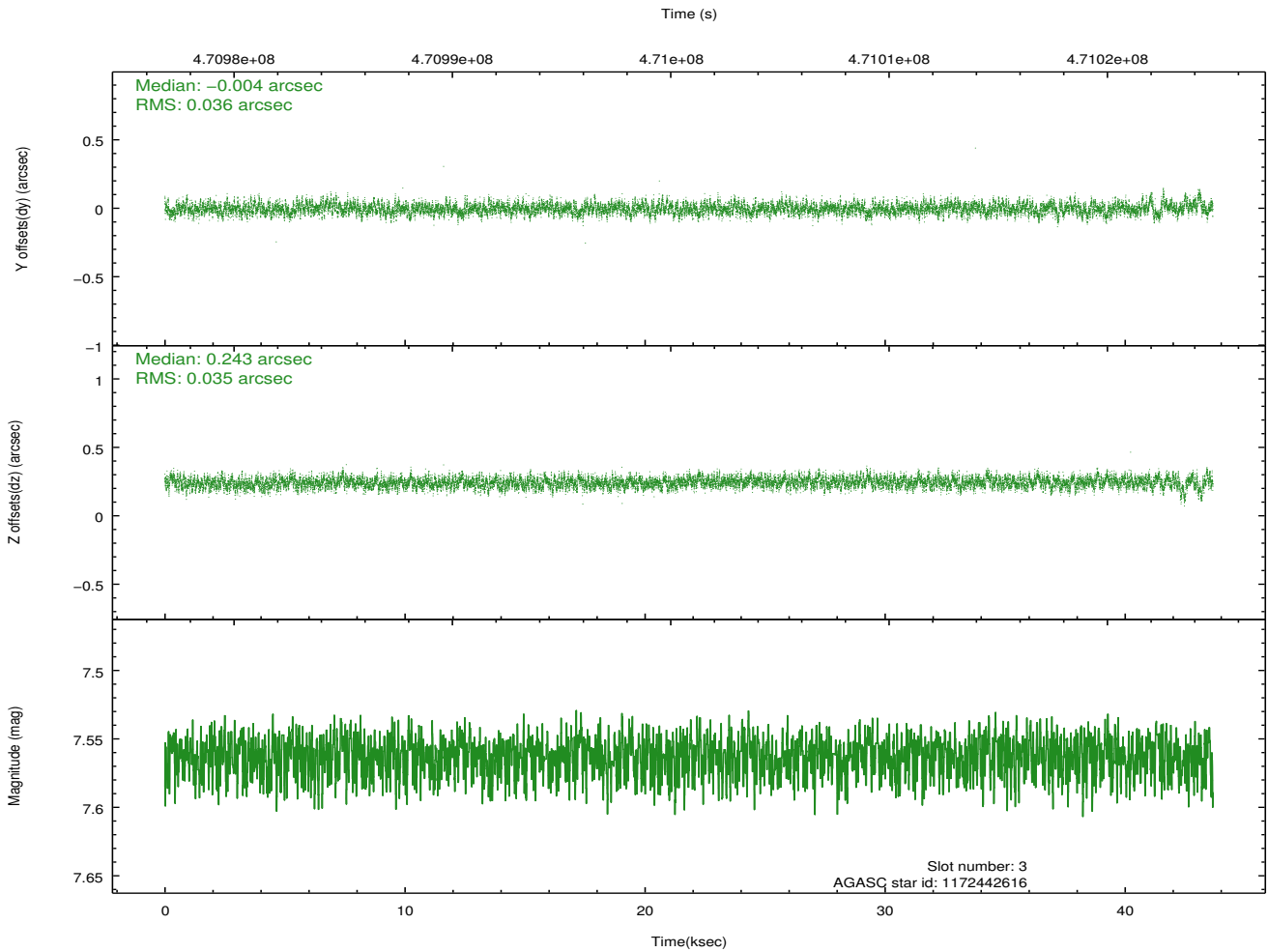
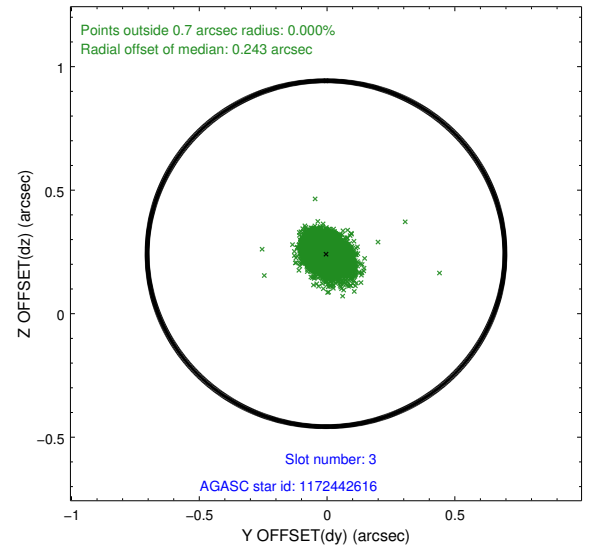
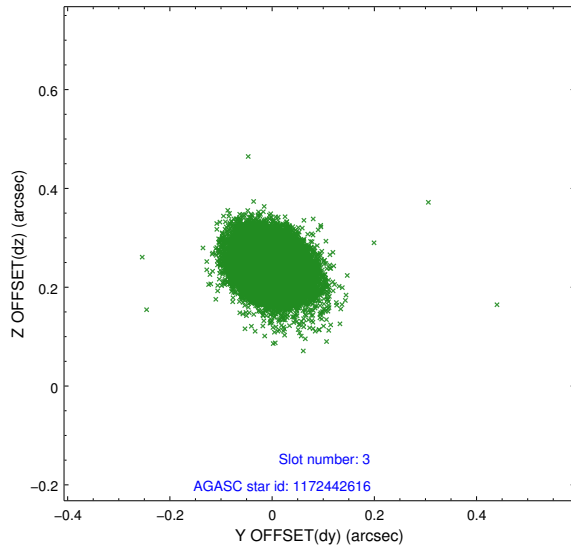


Slot Statistics

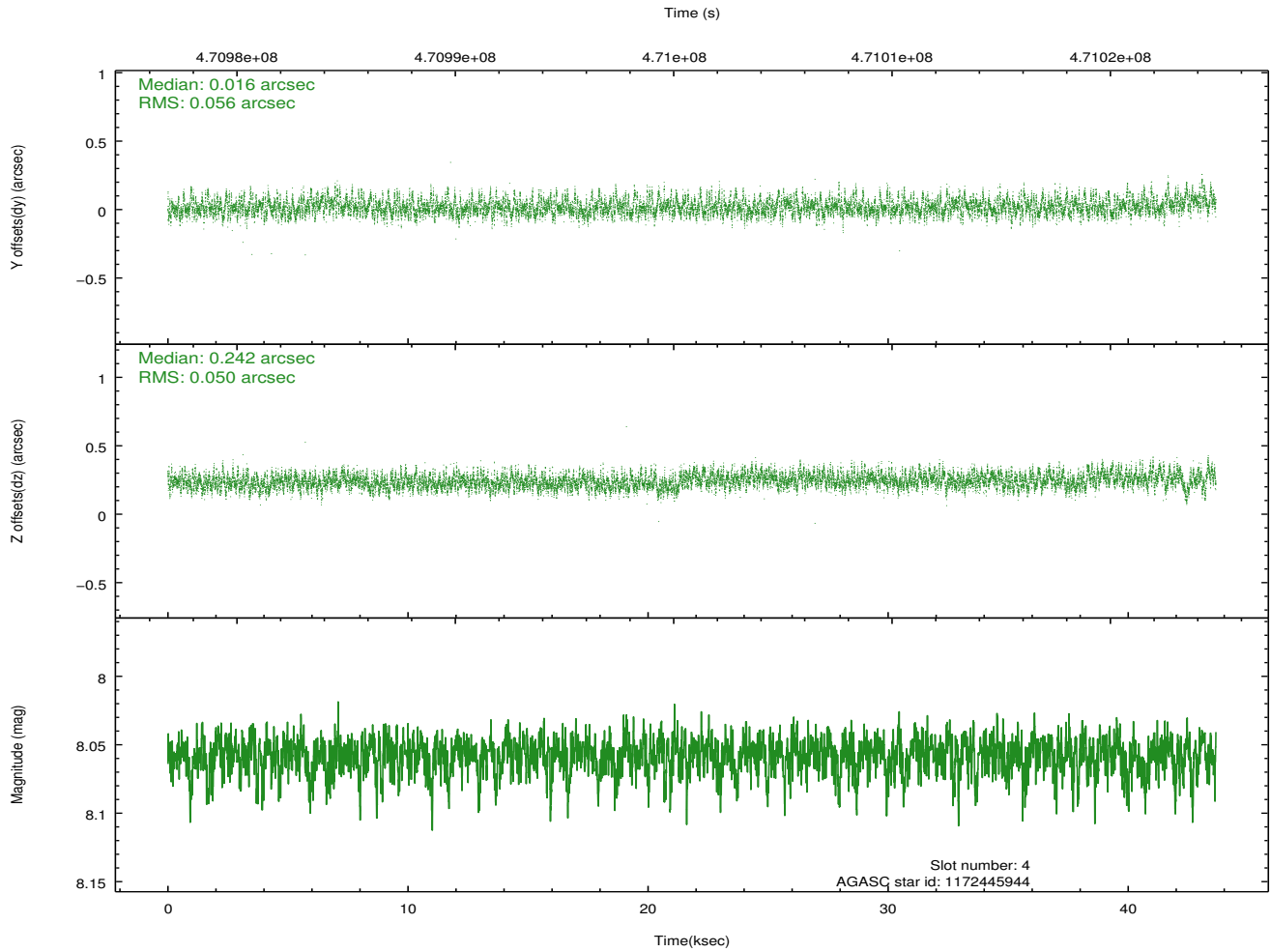
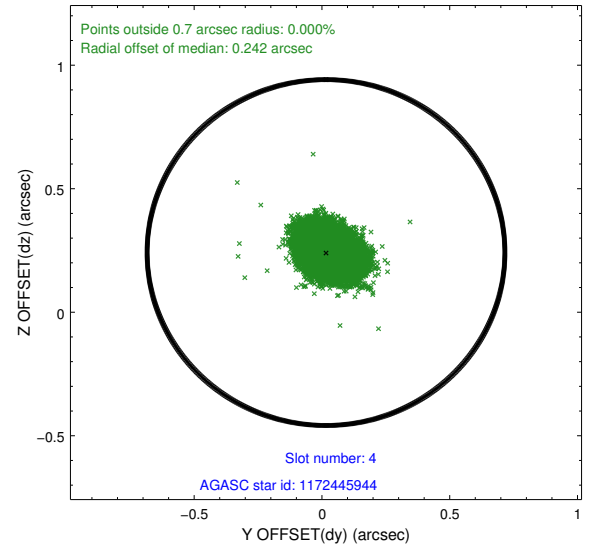
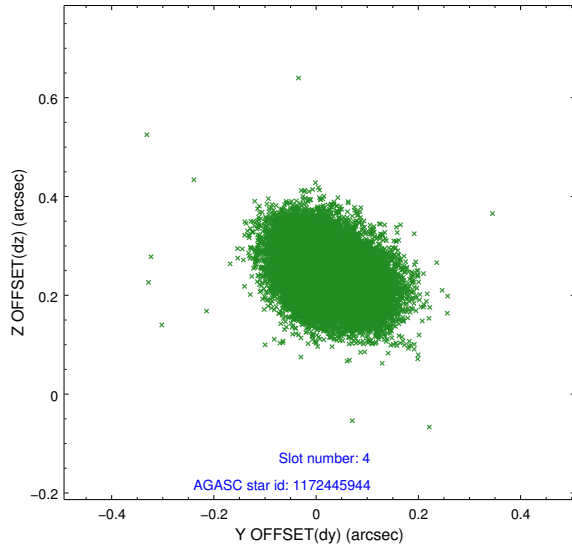
slot	status	used	id	mag	n_pts	med_dy	med_dz	dr1	dr2	ra	dec	mean_y	mean_z
0	FID		ACIS-S-2	6.93	10649	-0.089	-0.039	0.024	0.048	0.000000	0.000000	-771.15	-1739.06
1	FID		ACIS-S-4	7.01	10649	0.225	0.050	0.023	0.046	0.000000	0.000000	2142.47	169.47
2	FID		ACIS-S-5	7.04	10649	-0.174	-0.005	0.027	0.051	0.000000	0.000000	-1824.05	163.13
3	GUIDE	used	1172442616	7.56	21292	-0.004	0.243	0.053	0.086	143.868726	-62.458977	552.54	-397.24
4	GUIDE	used	1172445944	8.06	21294	0.016	0.242	0.080	0.131	144.791906	-62.554454	877.85	-1935.27
5	GUIDE	used	1172456888	6.98	21295	0.007	-0.173	0.094	0.153	142.387916	-62.360905	-197.29	1981.82
6	GUIDE	used	1172443008	9.29	21125	0.184	0.021	0.101	0.175	141.923660	-62.902413	-2284.36	1799.20
7	GUIDE	used	1172446520	7.90	21293	-0.207	-0.336	0.075	0.117	142.753036	-61.961763	1362.97	2062.59

2.4 Star Slots

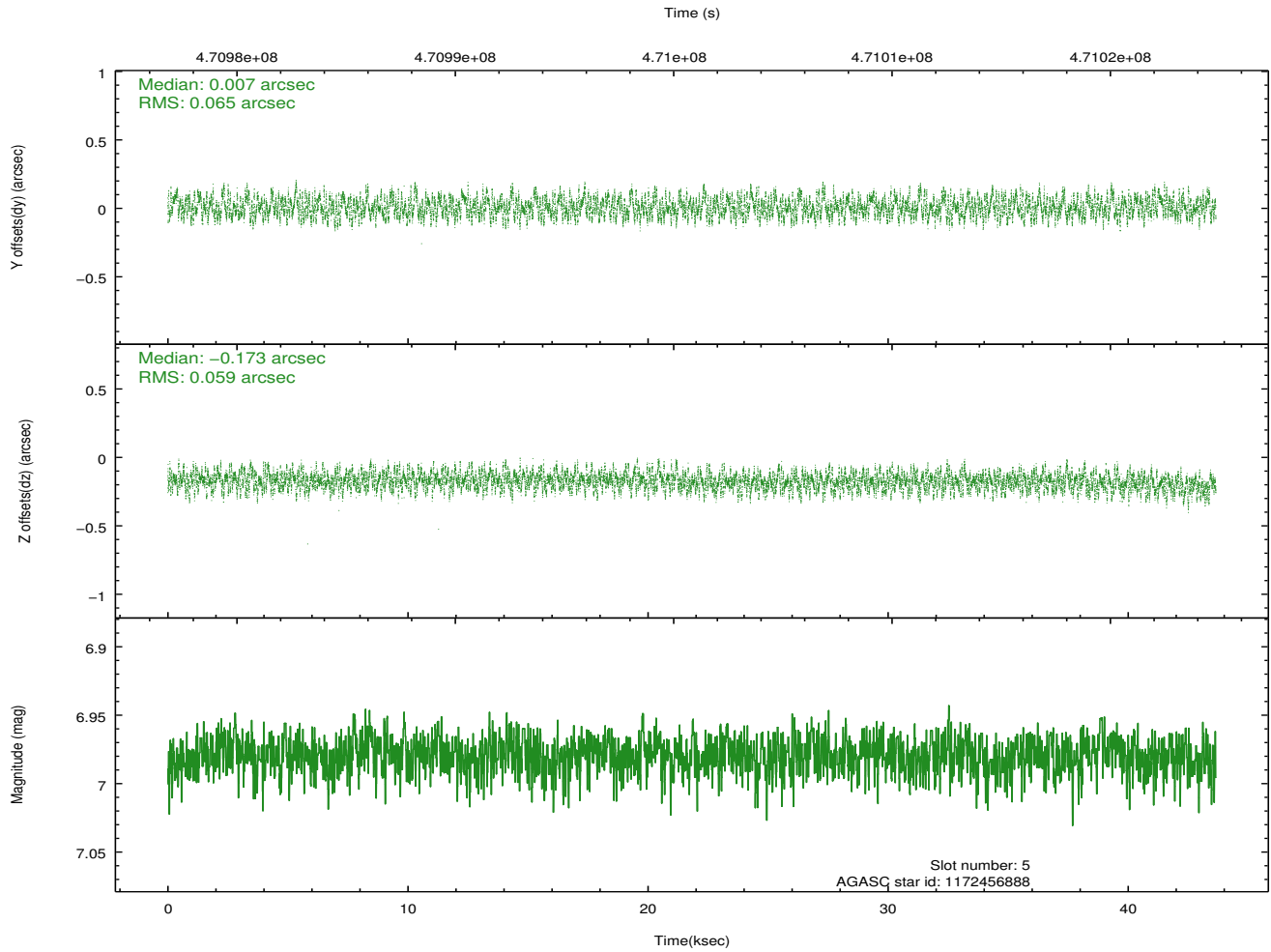
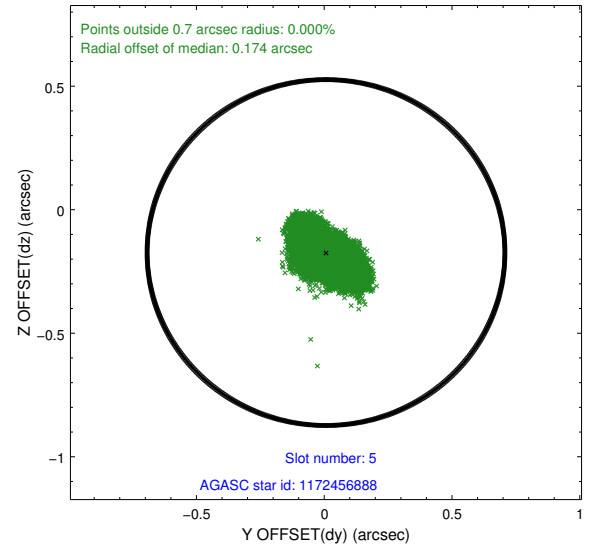
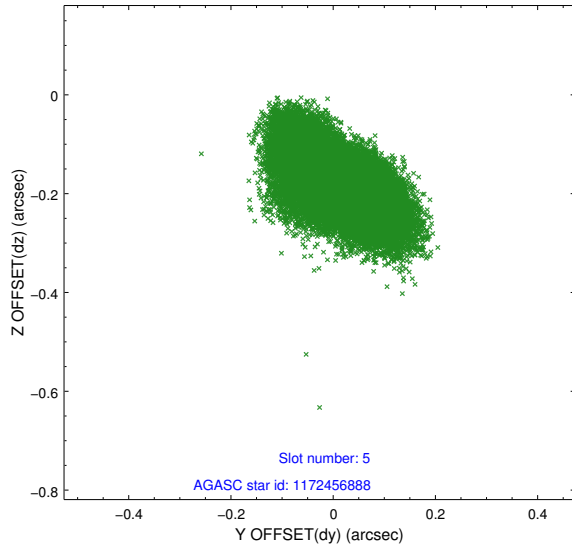
2.4.1 Slot 3



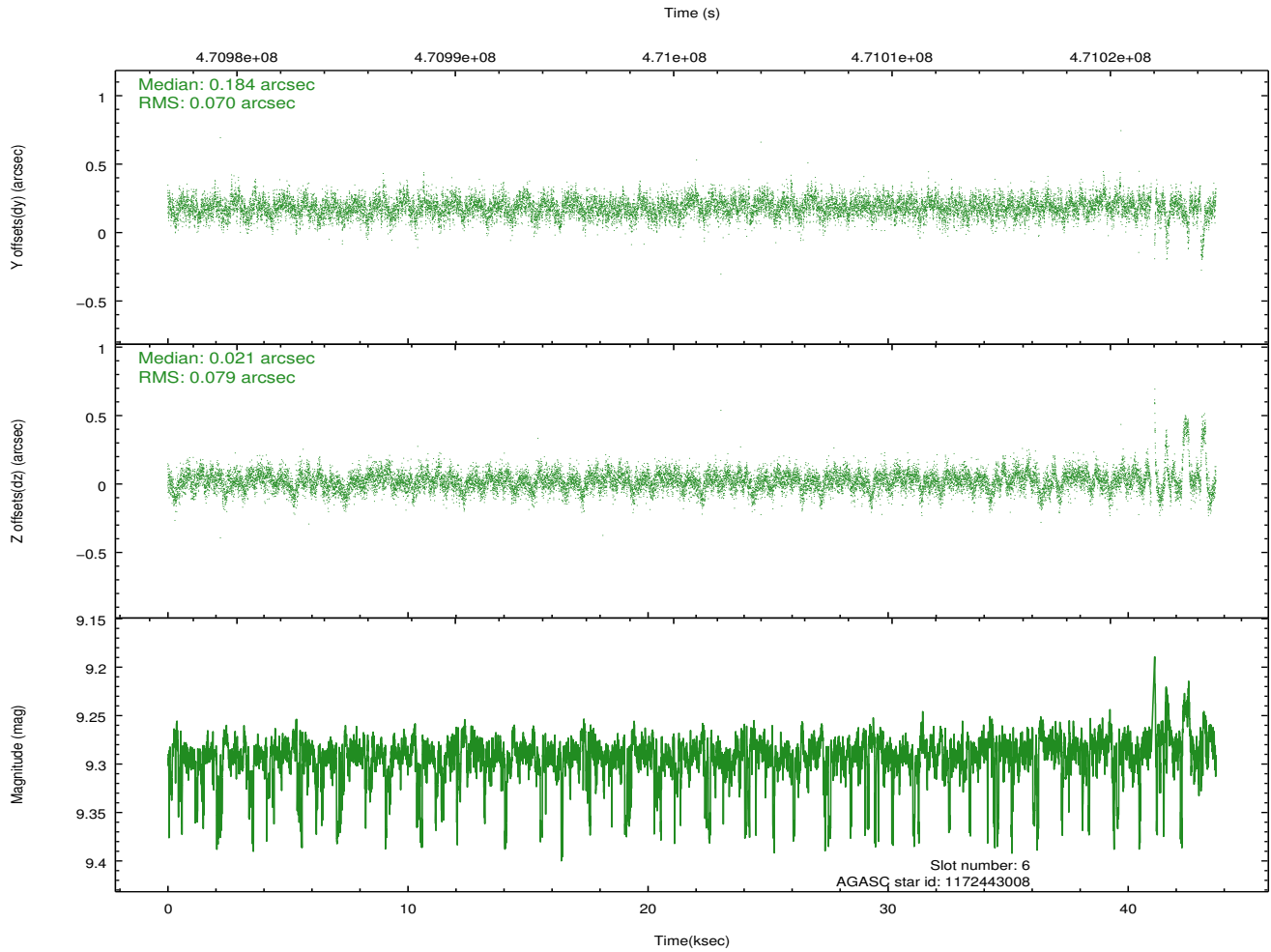
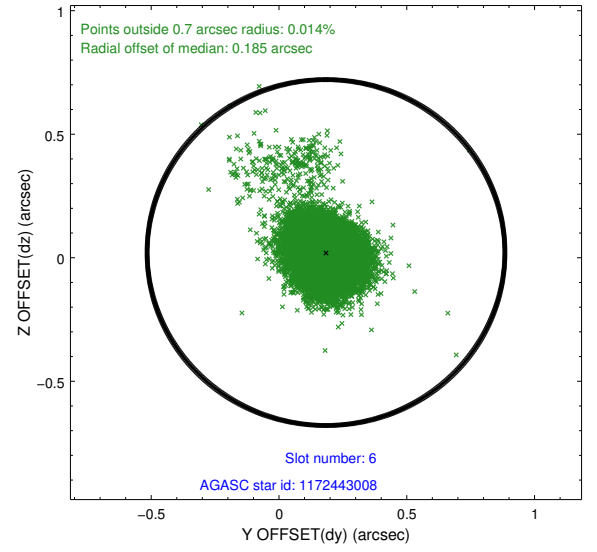
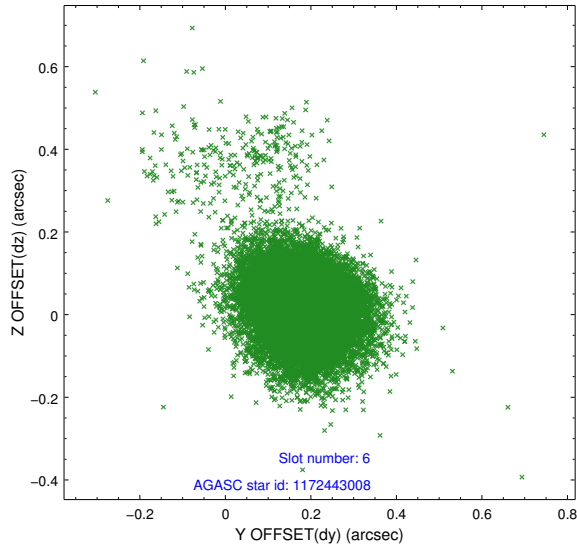
2.4.2 Slot 4



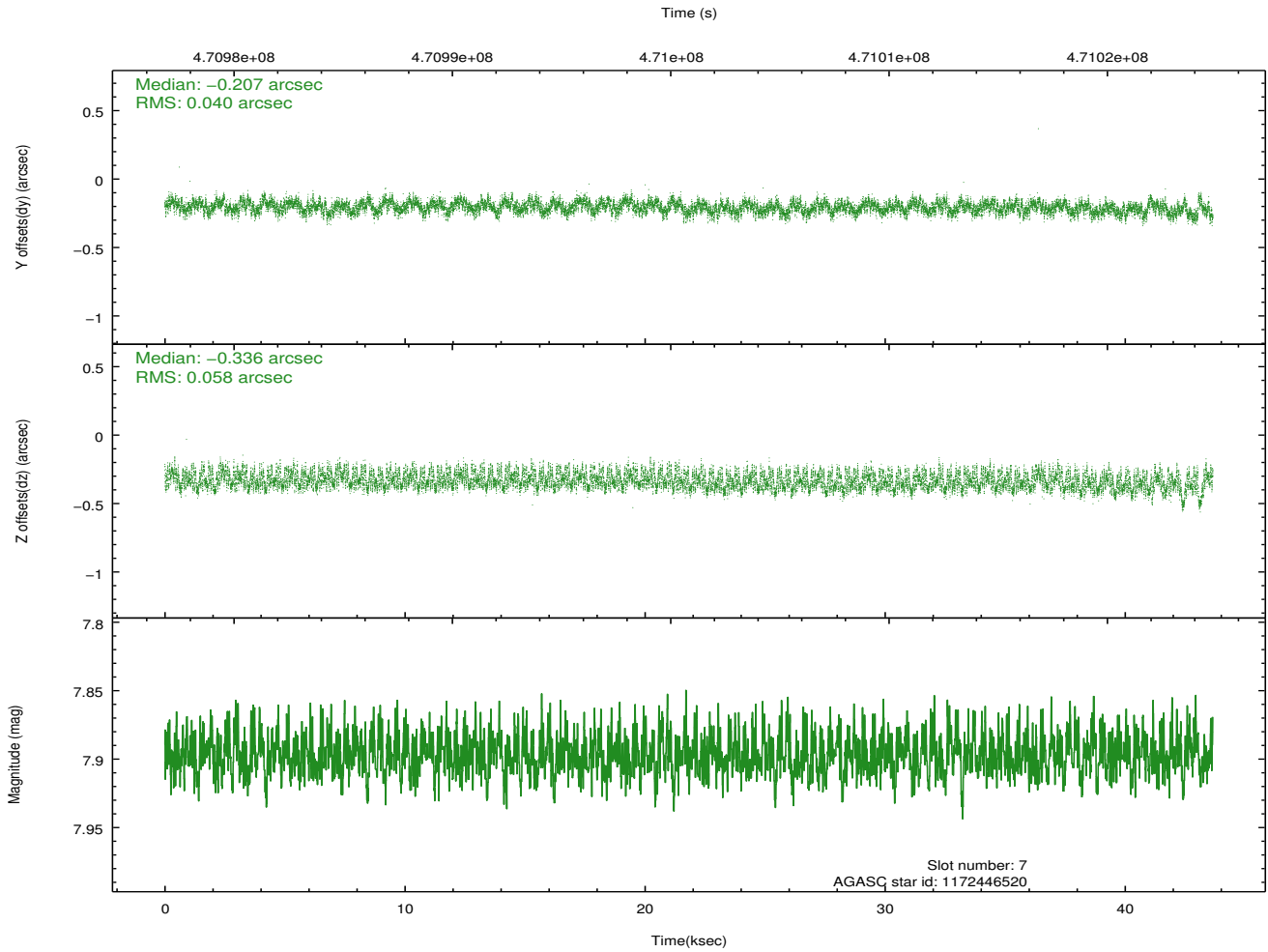
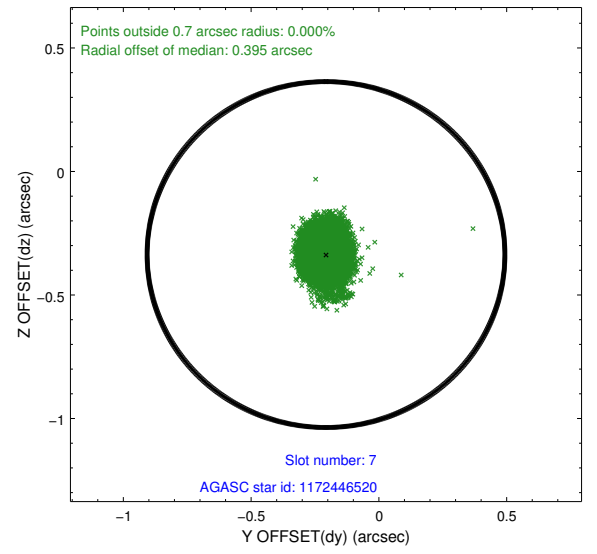
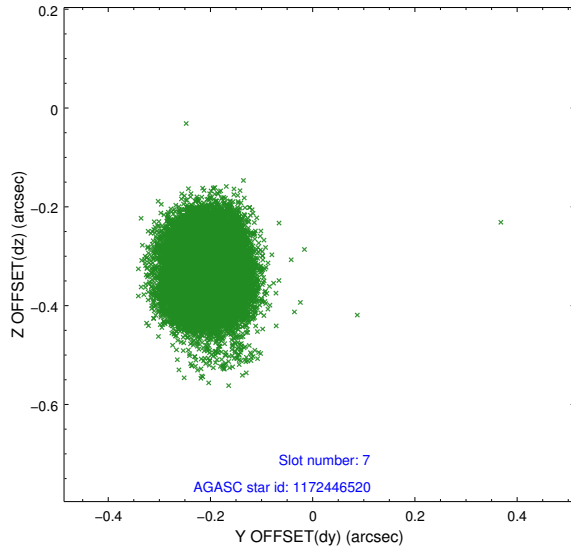
2.4.3 Slot 5



2.4.4 Slot 6

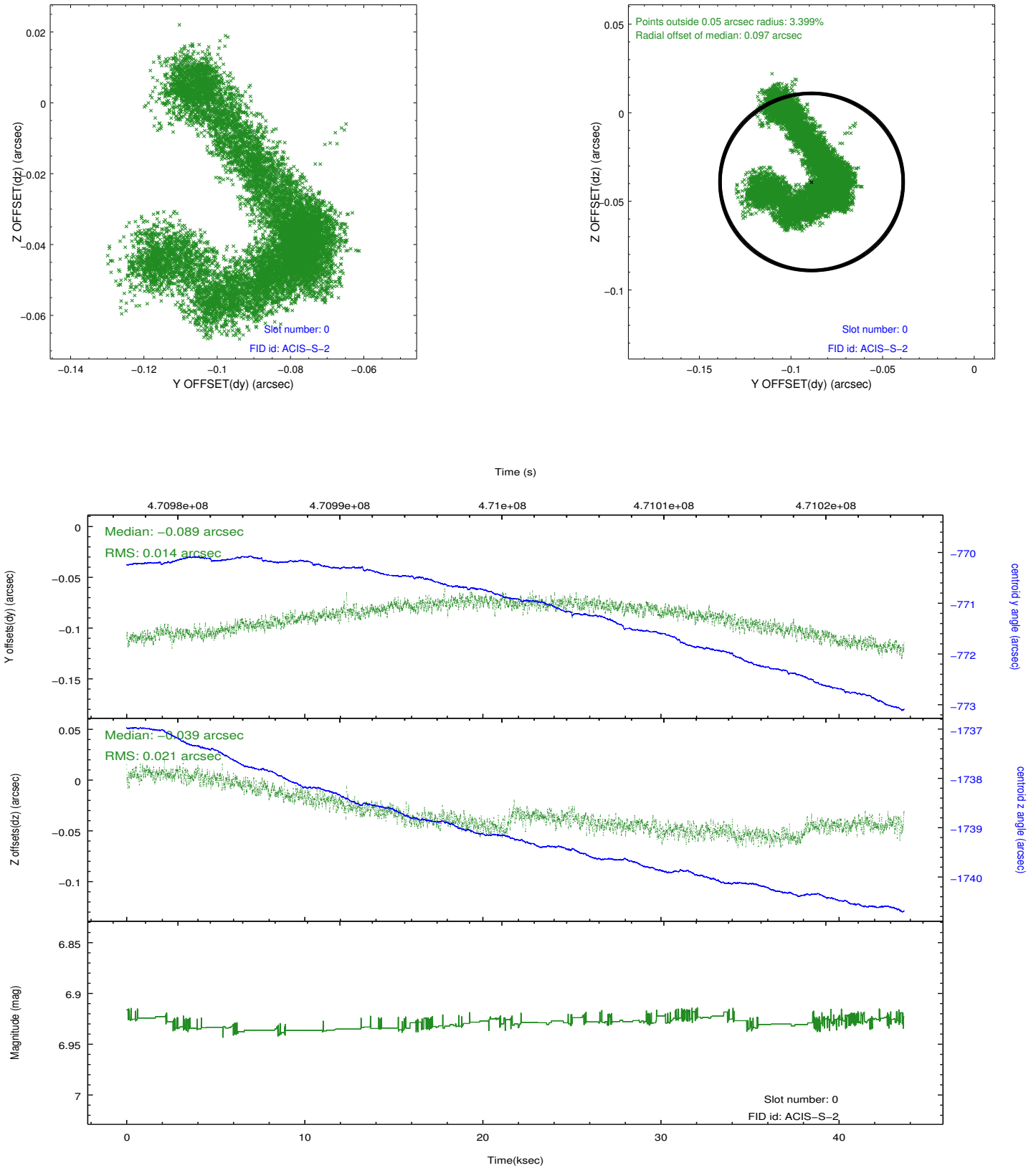


2.4.5 Slot 7

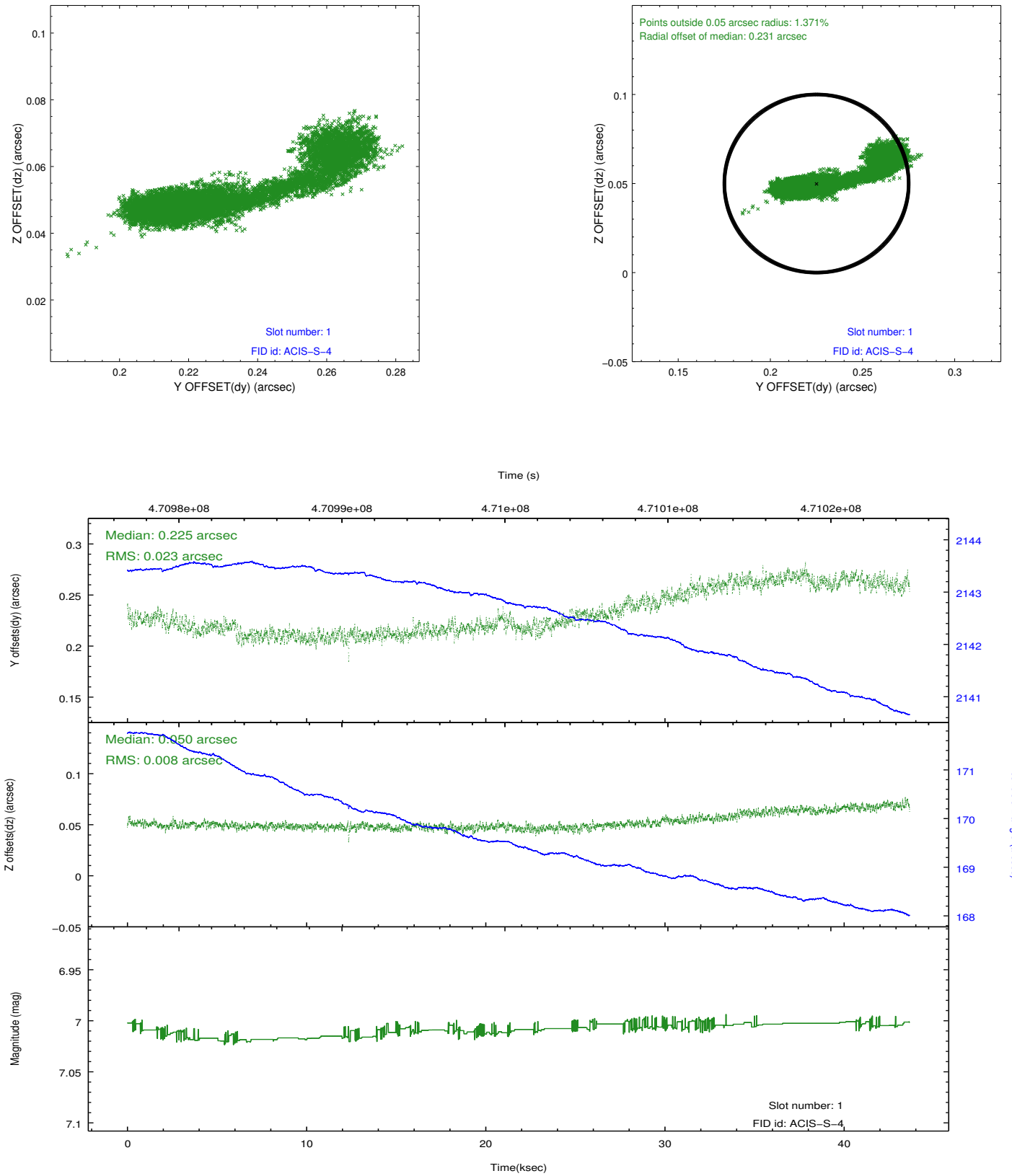


2.5 FID Slots

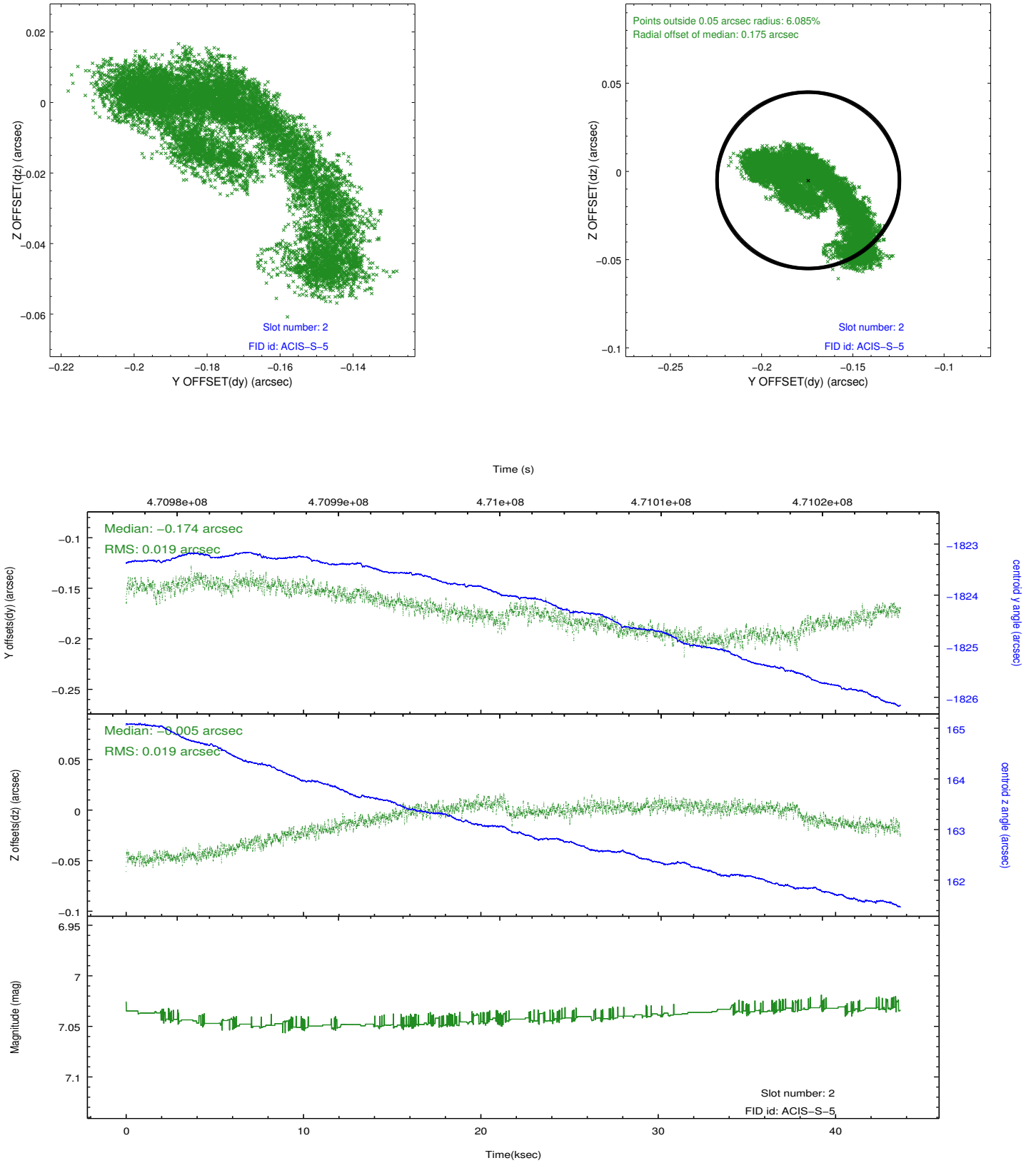
2.5.1 Slot 0



2.5.2 Slot 1



2.5.3 Slot 2



A Summary

A.1 Status

V&V Scientist	Beth Sundheim
V&V Date (YYYY-MM-DD)	2014.12.03
V&V Edition	1
V&V Disposition and Status	OK
V&V Charge Time	43.62940033555

A.2 Comments

These data have been reprocessed with new aspect alignment calibration files that correct small mean offsets (up to 0.4 arcsecs) and improve overall astrometric accuracy. The new calibration was determined using data from the time period being reprocessed and was performed using cross-correlation of X-ray sources with radio and optical counterparts.