

V&V Reference Report

L2 ASCDS Version : 8.4.3

Observation 13376 - L2 Version 2
Chandra X-Ray Center

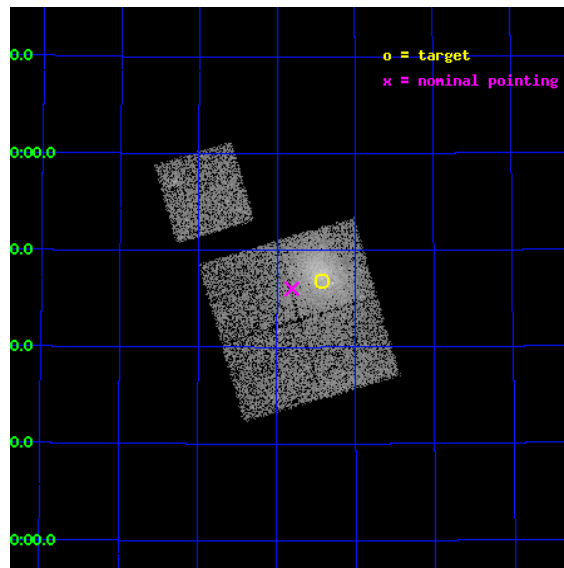
L2 Processing Date : Feb 20 2012

Contents

1	Front	2
2	OBI	3
2.1	OBI	3
2.1.1	Images	3
2.1.2	Bias	3
2.1.3	Parameters	4
2.1.4	Events	4
2.2	Compared Parameters	5
2.3	Aspect	6
2.4	Star Slots	9
2.4.1	Slot 3	9
2.4.2	Slot 4	10
2.4.3	Slot 5	11
2.4.4	Slot 6	12
2.4.5	Slot 7	13
2.5	FID Slots	14
2.5.1	Slot 0	14
2.5.2	Slot 1	15
2.5.3	Slot 2	16
A	Summary	17
A.1	Status	17
A.2	Comments	17

1 Front

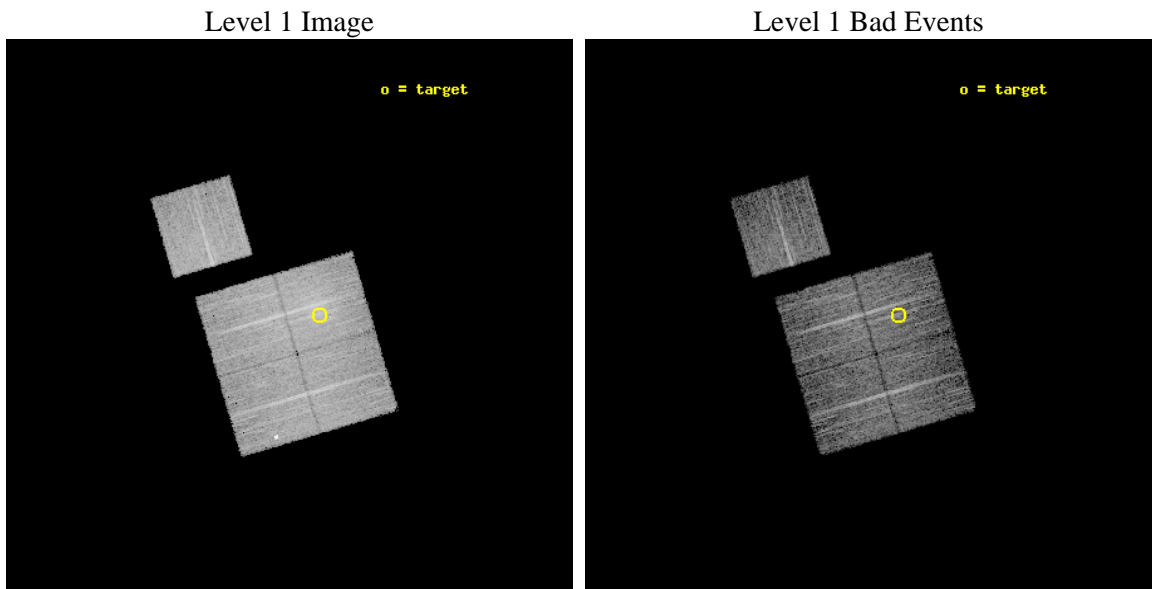
seq_num	801063	Sequence number
obs_id	13376	Observation id
title	Characterizing the Most Massive Clusters in the Local Universe	Pro
observer	Dr Stephen Murray	Principal investigator
object	G149.24+54.18	Source name
dtcycle	0	
cycle	P	events from which exps? Prim/Second/Both
ra_targ	164.605833	Observer's specified target RA [deg]
dec_targ	56.780389	Observer's specified target Dec [deg]
ra_nom	164.70226402171	Nominal RA [deg]
dec_nom	56.767220745177	Nominal Dec [deg]
roll_nom	343.62802319707	Nominal Roll [deg]
revision	2	Processing version of data
ontime	9055.1000696421	Sum of GTIs [s]
livetime	8936.7885209645	Livetime [s]
ontime0	9051.9590793848	Sum of GTIs [s]
ontime1	9055.1000696421	Sum of GTIs [s]
ontime2	9055.1000696421	Sum of GTIs [s]
ontime3	9055.1000696421	Sum of GTIs [s]
ontime6	9055.1000696421	Sum of GTIs [s]
l2events	39463	Number of level 2 events



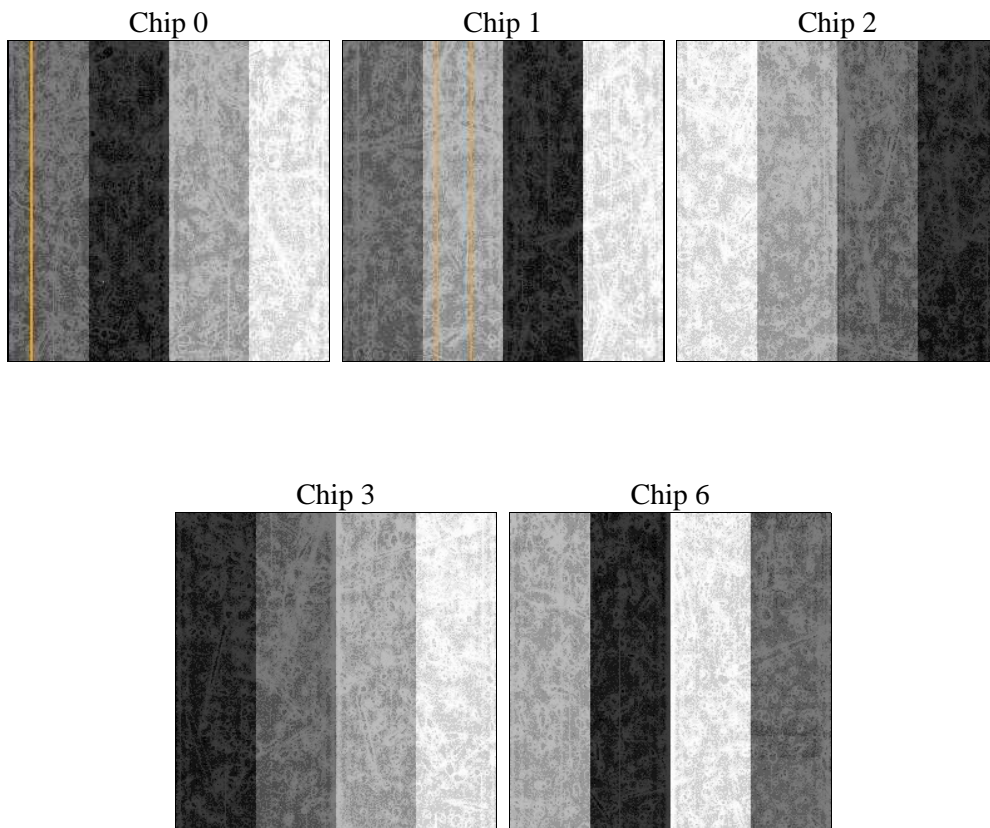
2 OBI

2.1 OBI

2.1.1 Images



2.1.2 Bias



2.1.3 Parameters

obi_num	0	Obi number	sched_exp_time	9000.000000	[s] Scheduled observation exposure time
ascdsver	8.4.3	Processing system revision	ontime	9055.1000696421	Sum of GTIs [s]
caldsver	4.4.8	 	ontime0	9051.9590793848	Sum of GTIs [s]
date	2012-02-20T22:53:05	Date and time of file creation	ontime1	9055.1000696421	Sum of GTIs [s]
revision	2	Processing version of data	ontime2	9055.1000696421	Sum of GTIs [s]
			ontime3	9055.1000696421	Sum of GTIs [s]
			ontime6	9055.1000696421	Sum of GTIs [s]
			l1events	293028	Number of level 1 events

2.1.4 Events

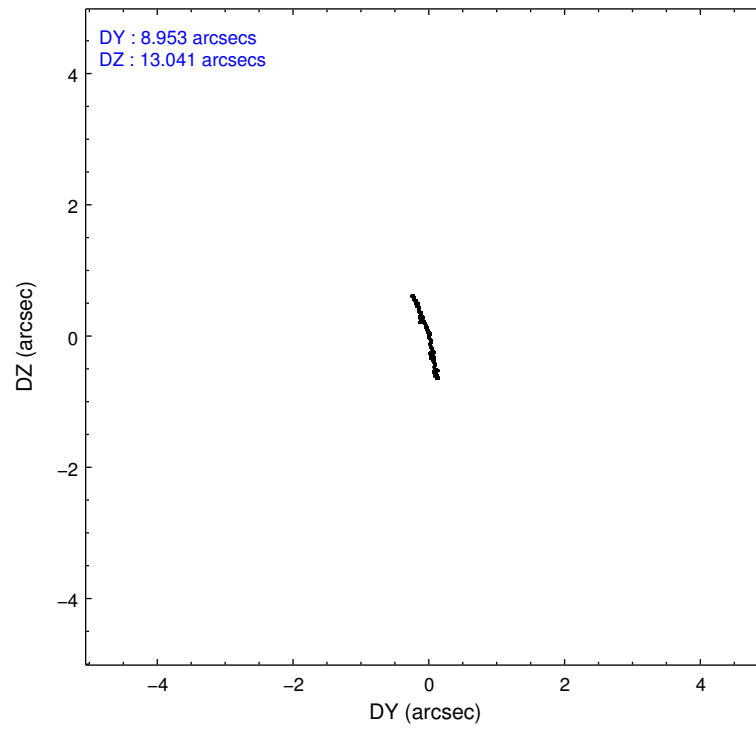
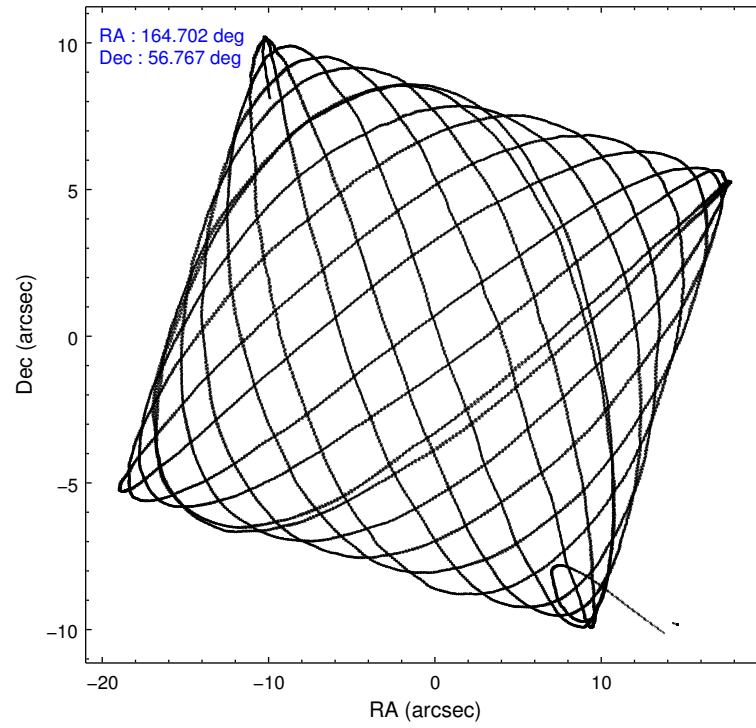
	ccd 0	ccd 1	ccd 2	ccd 3	ccd 6
level 1 events	55283	53016	60218	67182	57329
rejected events	47265	45362	53392	50014	50616
rejected %	85%	85%	88%	74%	88%

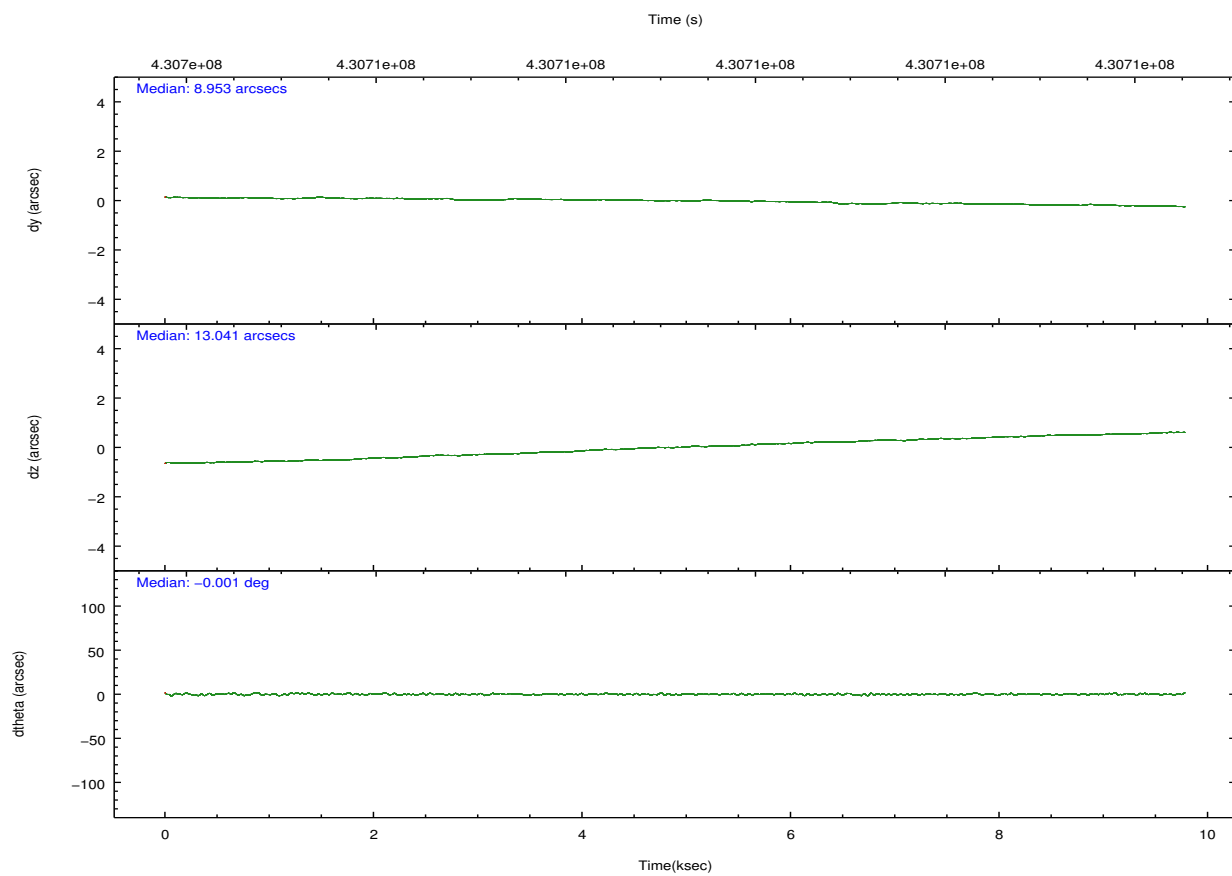
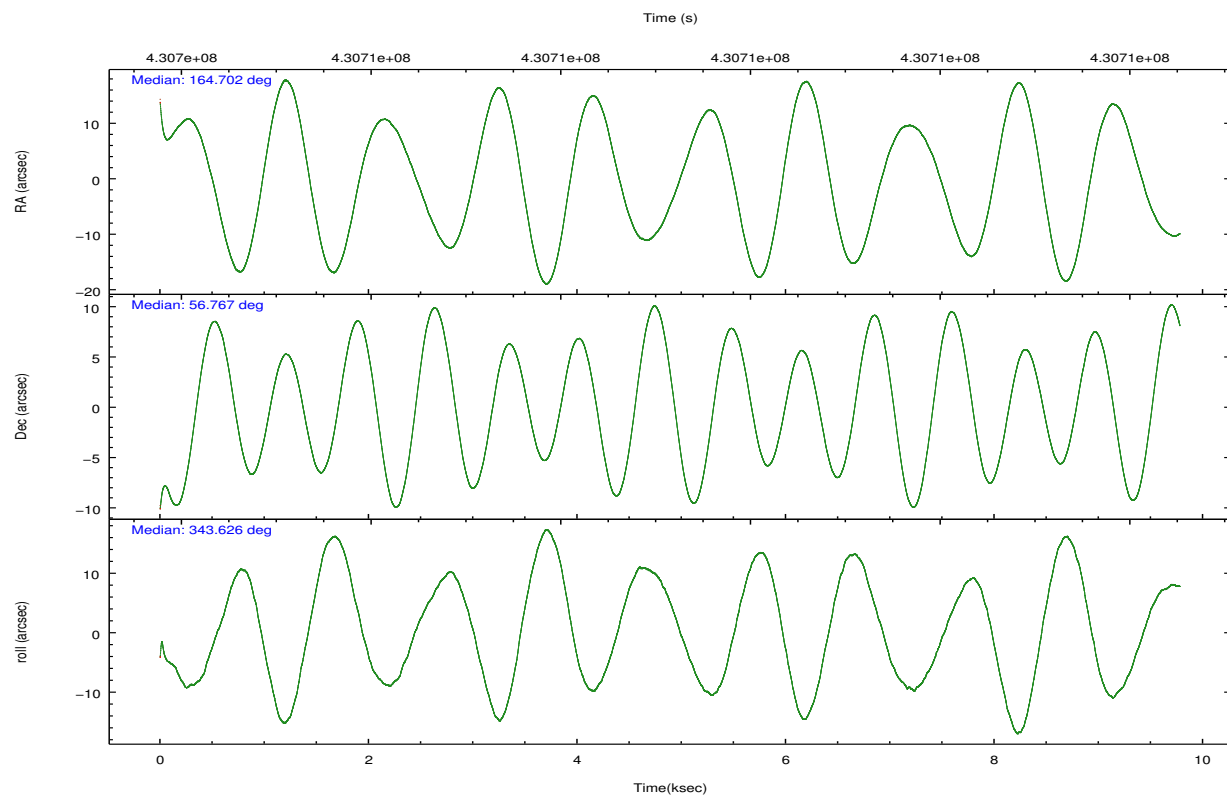
	ccd 0	ccd 1	ccd 2	ccd 3	ccd 6
grade 0 events	3690	2819	2685	11093	2370
	6%	5%	4%	16%	4%
grade 1 events	43	28	32	102	31
	0%	0%	0%	0%	0%
grade 2 events	1626	1781	1611	2515	1495
	2%	3%	2%	3%	2%
grade 3 events	666	721	673	952	709
	1%	1%	1%	1%	1%
grade 4 events	662	786	674	1028	689
	1%	1%	1%	1%	1%
grade 5 events	2503	2570	2346	2912	2641
	4%	4%	3%	4%	4%
grade 6 events	1377	1552	1187	1593	1454
	2%	2%	1%	2%	2%
grade 7 events	44716	42759	51010	46987	47940
	80%	80%	84%	69%	83%

2.2 Compared Parameters

Parameter	Planned	Actual	Parameter	Planned	Actual
Instrument	ACIS	ACIS	Obspar format version number	7	7
Detector	ACIS-01236	ACIS-01236	Obspar file type	PREDICTED	ACTUAL
Grating	NONE	NONE	Obspar update status	NONE	UPDATED
Data mode	VFAINT	VFAINT	CCD I0 on	Y	Y
Observation mode	POINTING	POINTING	CCD I1 on	Y	Y
[deg] Pointing RA	164.653522	164.7022640217106	CCD I2 on	Y	Y
[deg] Pointing Dec	56.760645	56.76722074517651	CCD I3 on	Y	Y
[deg] Pointing Roll	343.460103	343.6280231970653	CCD S0 on	N	N
[mm] SIM focus pos	-0.782348	-0.7809083437167272	CCD S1 on	N	N
[mm] SIM defocus	0	0.001439871863259334	CCD S2 on	O1	Y
[mm] SIM translation stage pos	-225.892463	-225.8835723768489	CCD S3 on	N	N
[mm] SIM translation stage offset	-7.7	-7.708880626080827	CCD S4 on	N	N
[s] Observation start time (MET)	430705038.184000	430703086.05178	CCD S5 on	N	N
Observation start date	2011-08-26T00:16:12	2011-08-25T23:44:46	Number of optional ACIS chips dropped	0	0
[s] Observation end time (MET)	430714038.184000	430714618.83988	On-chip summing requested	N	N
Observation end date	2011-08-26T02:46:12	2011-08-26T02:56:58	Subarray requested	NONE	NONE
Read mode	TIMED	TIMED	Alternating exposures requested	N	N
			[s] Primary exposure time	0.000000	3.1

2.3 Aspect



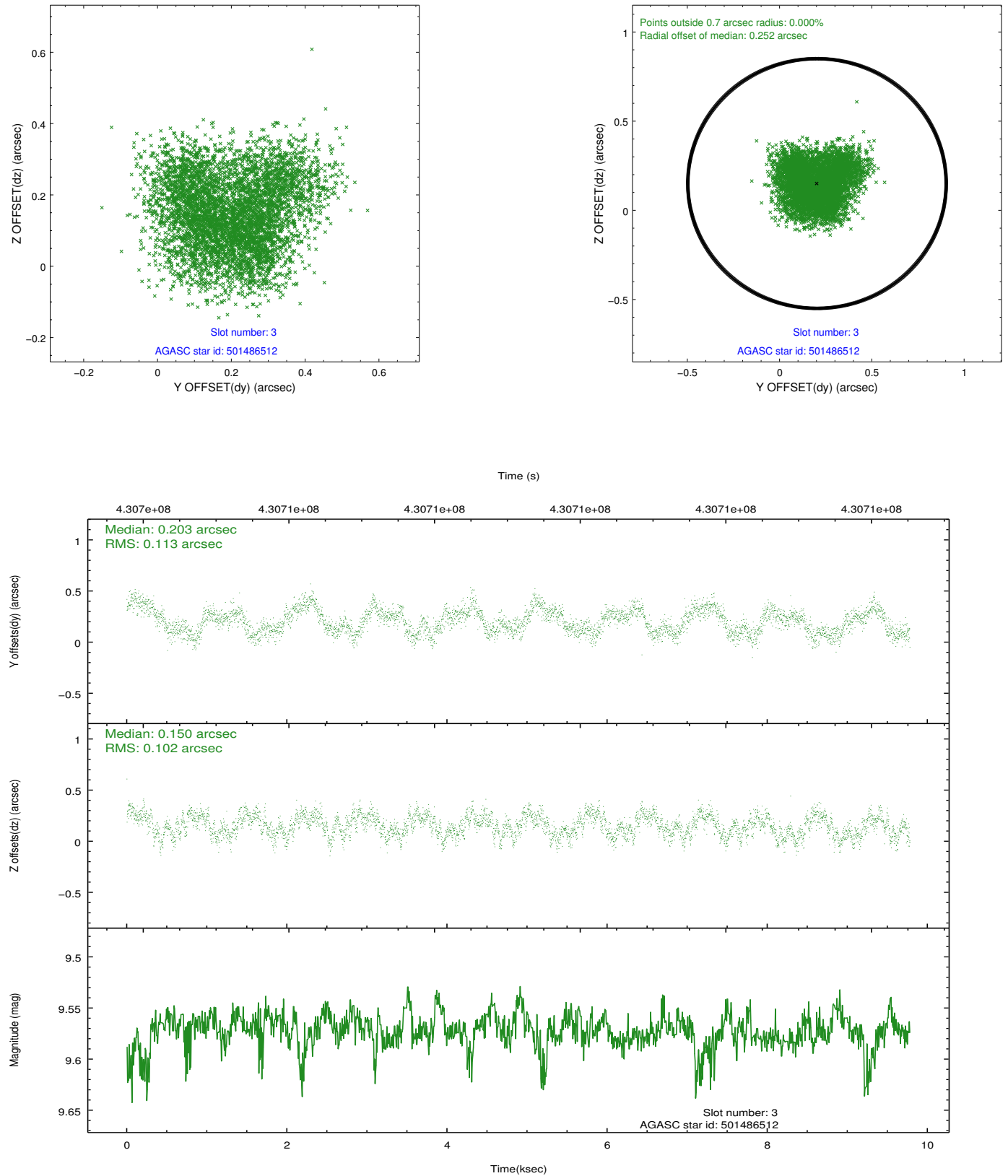


Slot Statistics

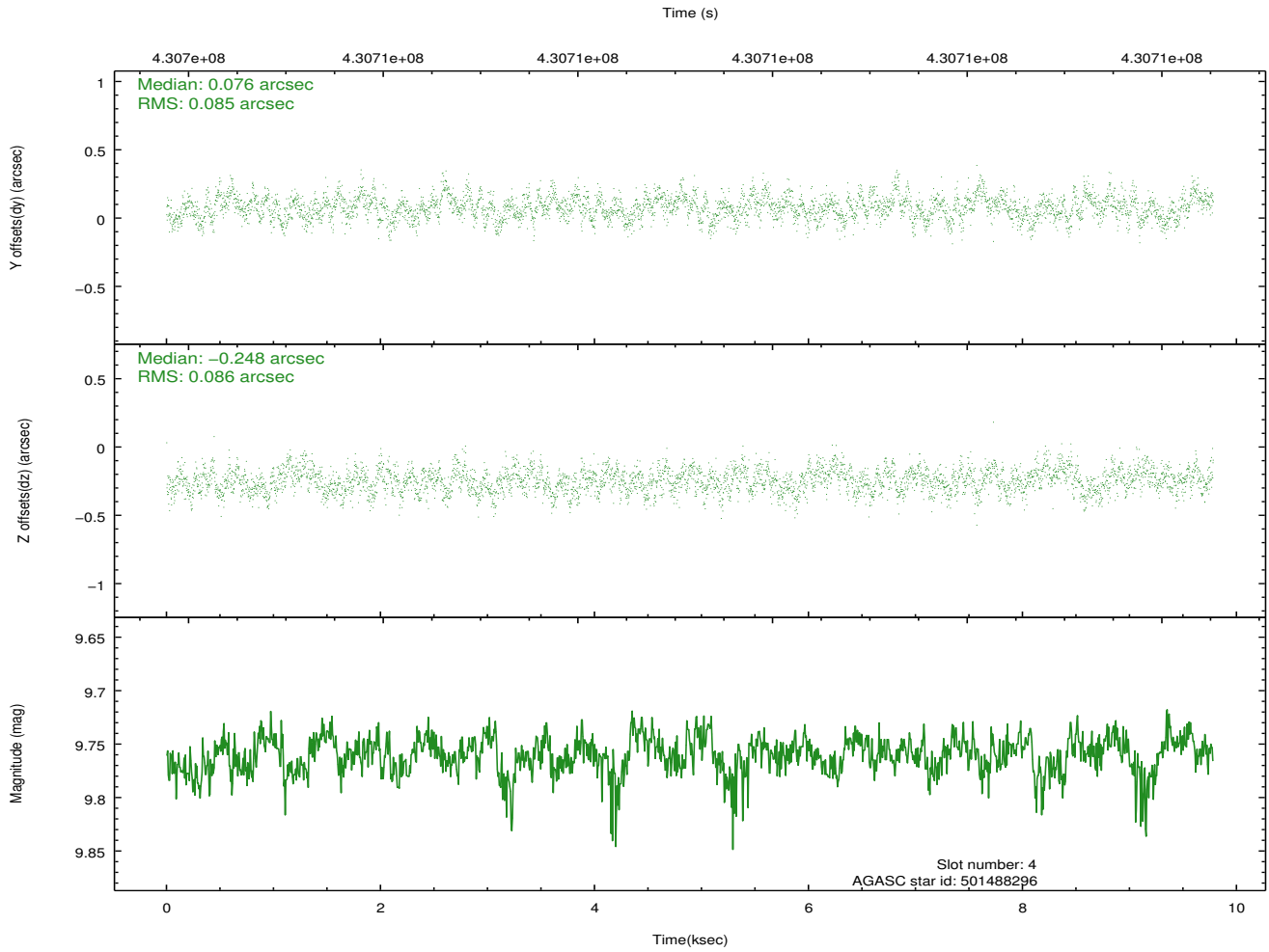
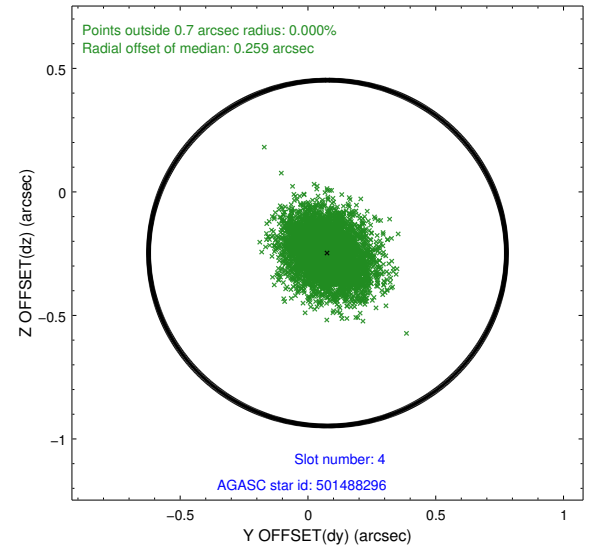
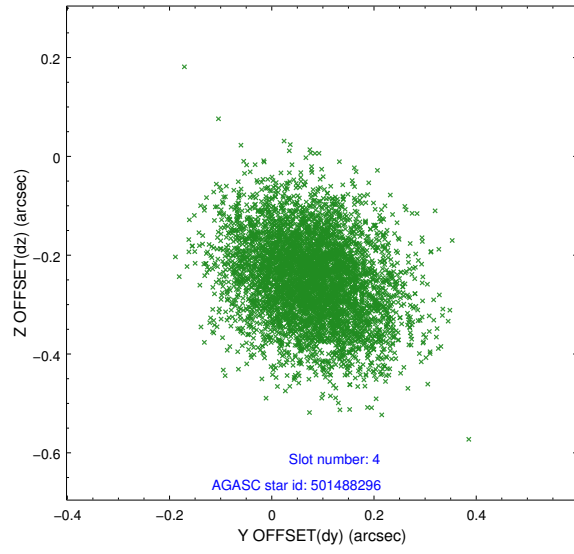
slot	status	id	mag	n_pts	med_dy	med_dz	dr1	dr2	ra	dec	mean_y	mean_z
0	FID	ACIS-I-2	7.01	2386	-0.091	-0.039	0.022	0.032	0.000000	0.000000	-764.13	-1000.19
1	FID	ACIS-I-4	6.96	2386	0.176	0.067	0.011	0.018	0.000000	0.000000	2149.94	905.65
2	FID	ACIS-I-5	7.04	2386	-0.186	0.042	0.019	0.028	0.000000	0.000000	-1816.92	903.18
3	GUIDE	501486512	9.57	4764	0.203	0.150	0.167	0.249	163.579075	56.729186	-2006.60	-697.02
4	GUIDE	501488296	9.76	4759	0.076	-0.248	0.129	0.208	164.354320	57.421227	-1234.27	2115.18
5	GUIDE	501618520	7.56	4772	-0.213	0.171	0.066	0.101	165.086776	56.452025	1141.67	-816.30
6	GUIDE	501619344	9.48	4755	-0.069	-0.025	0.127	0.200	165.980018	57.182925	2041.30	2218.02
7	GUIDE	501618176	9.29	4745	0.004	-0.046	0.104	0.165	165.848262	56.648427	2375.56	306.35

2.4 Star Slots

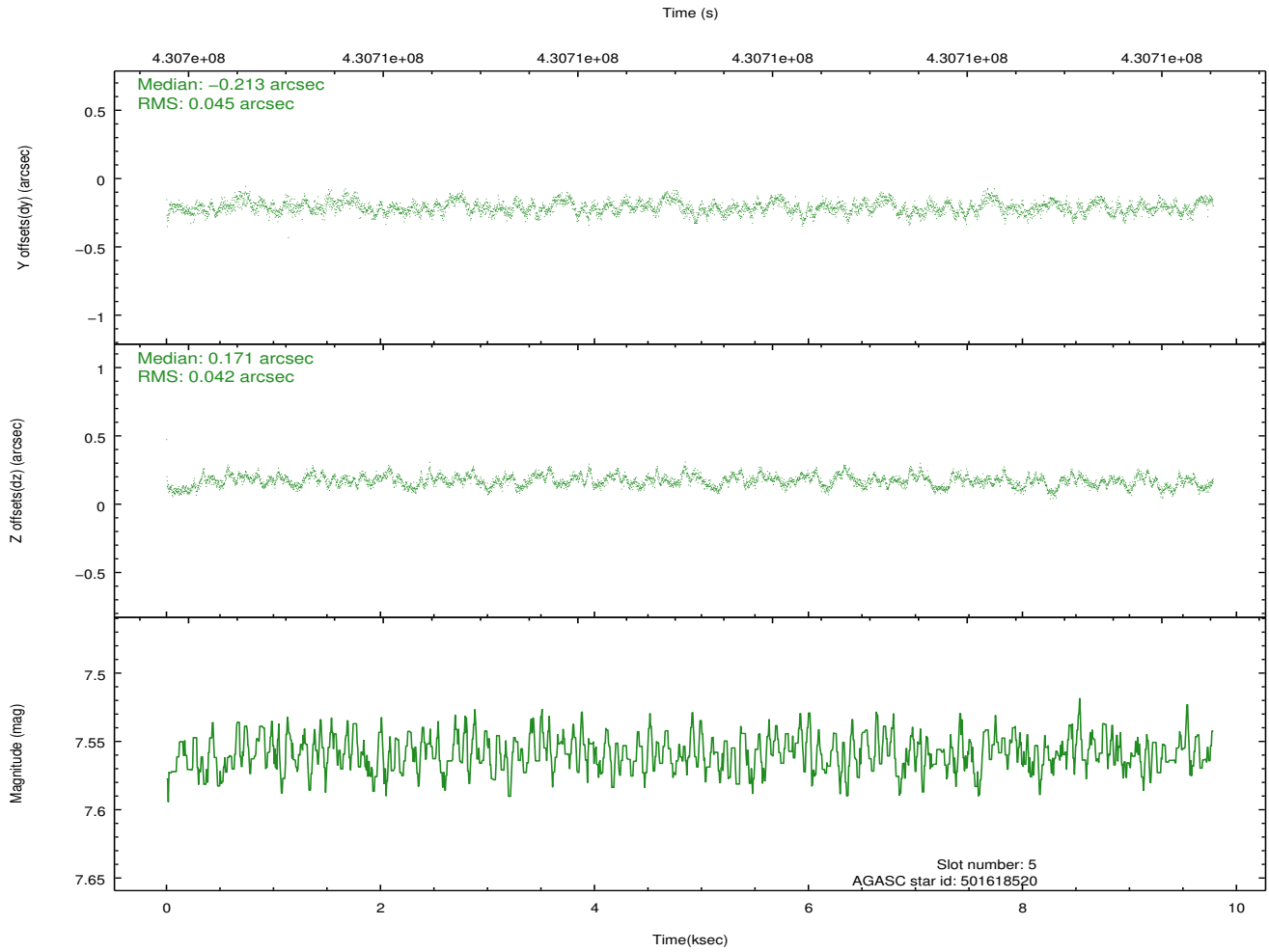
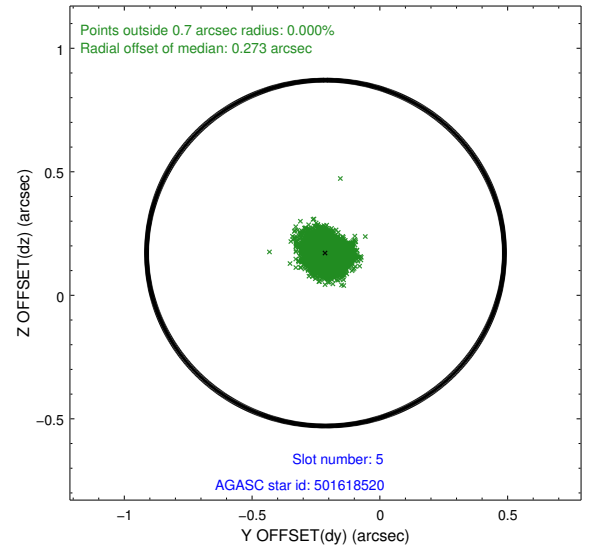
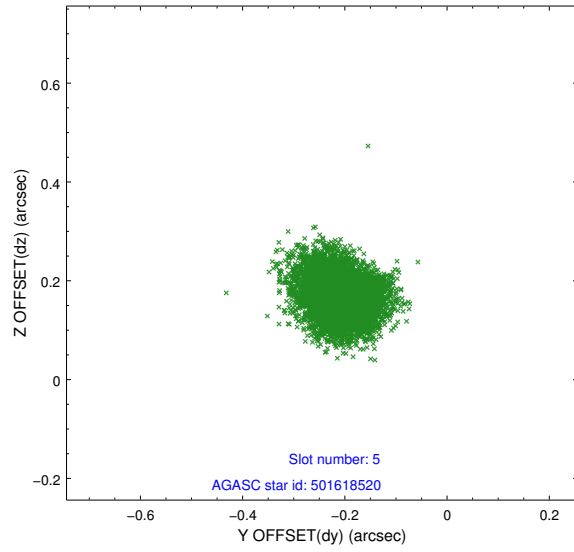
2.4.1 Slot 3



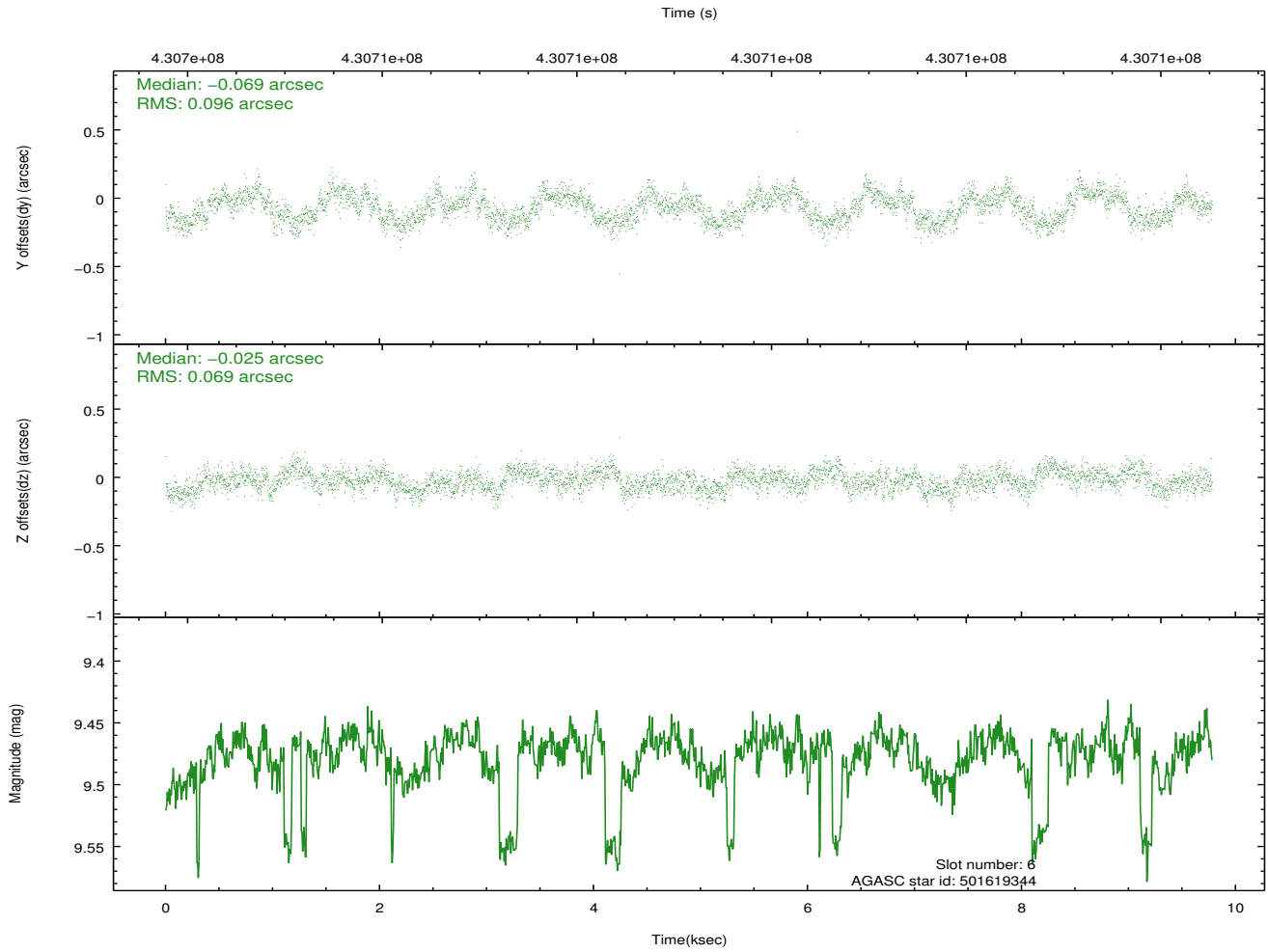
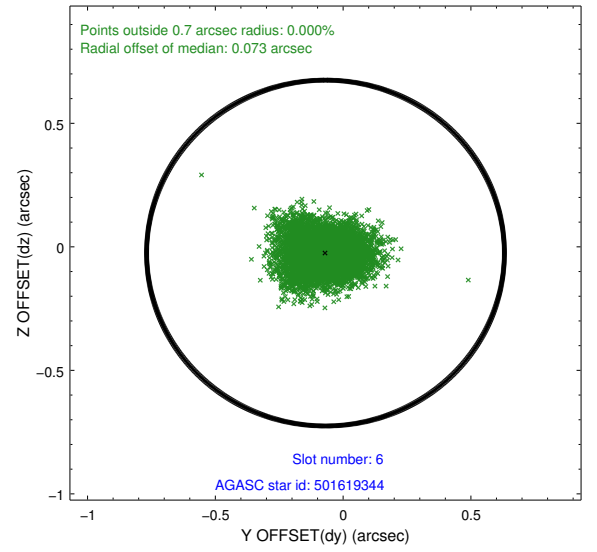
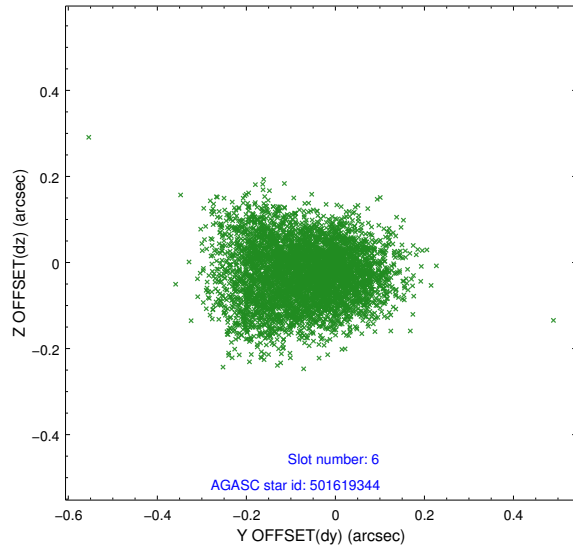
2.4.2 Slot 4



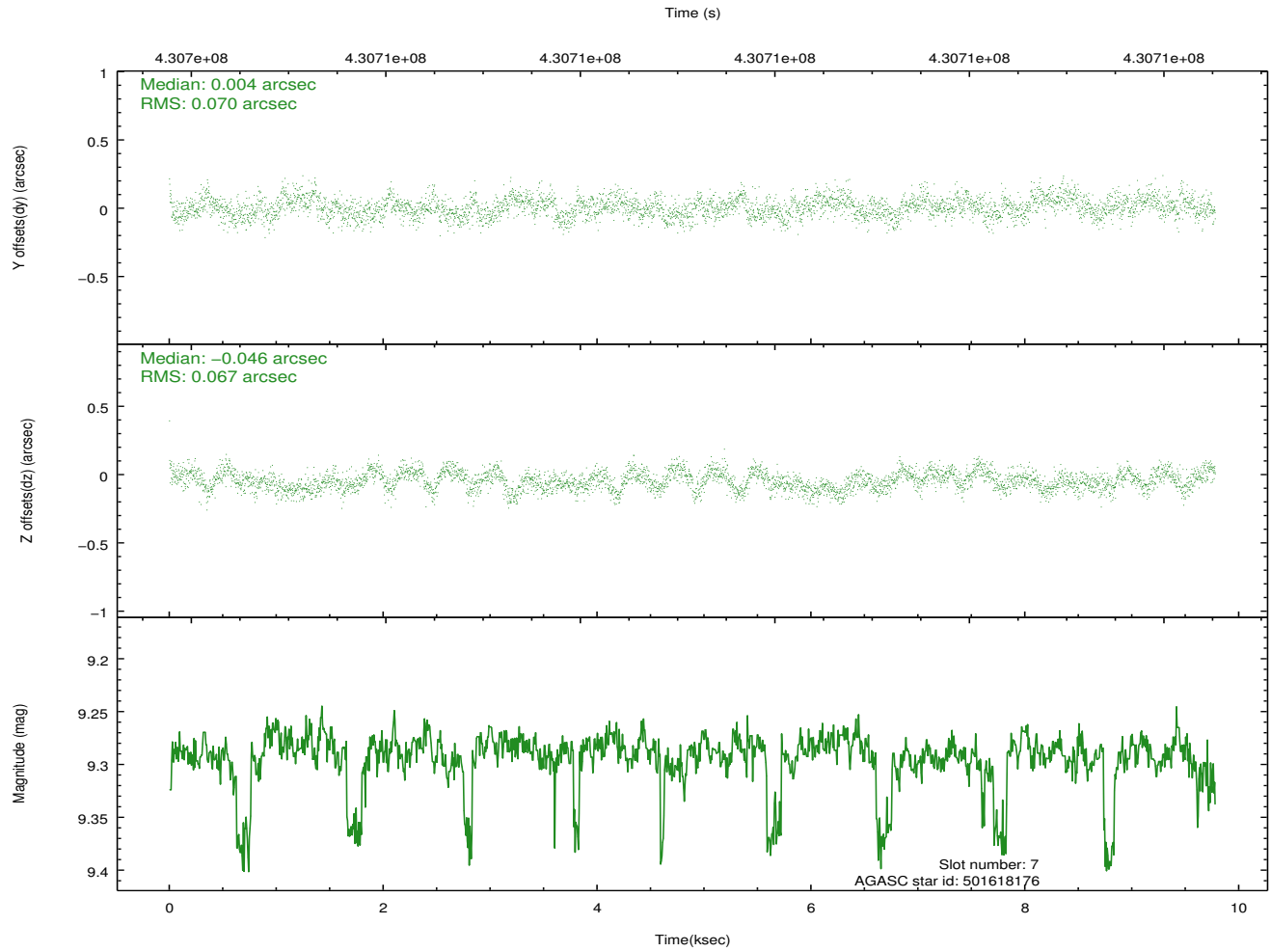
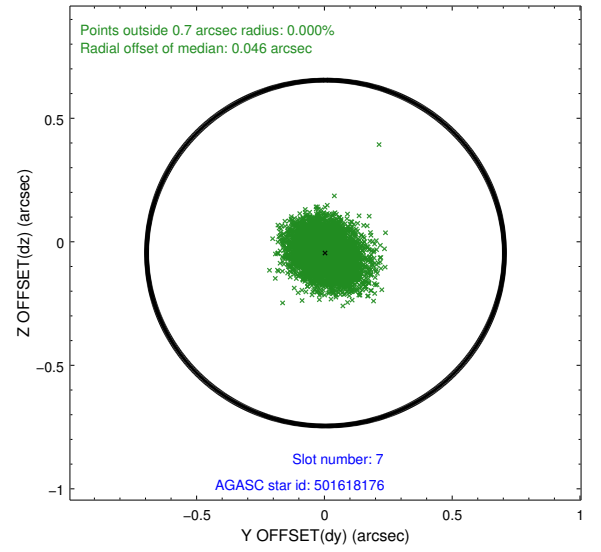
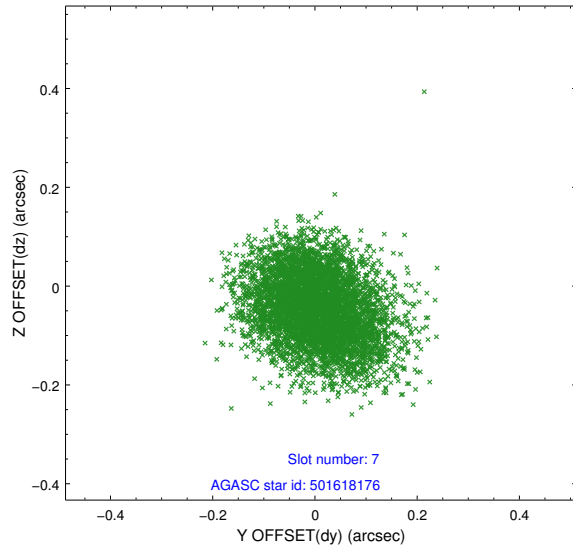
2.4.3 Slot 5



2.4.4 Slot 6

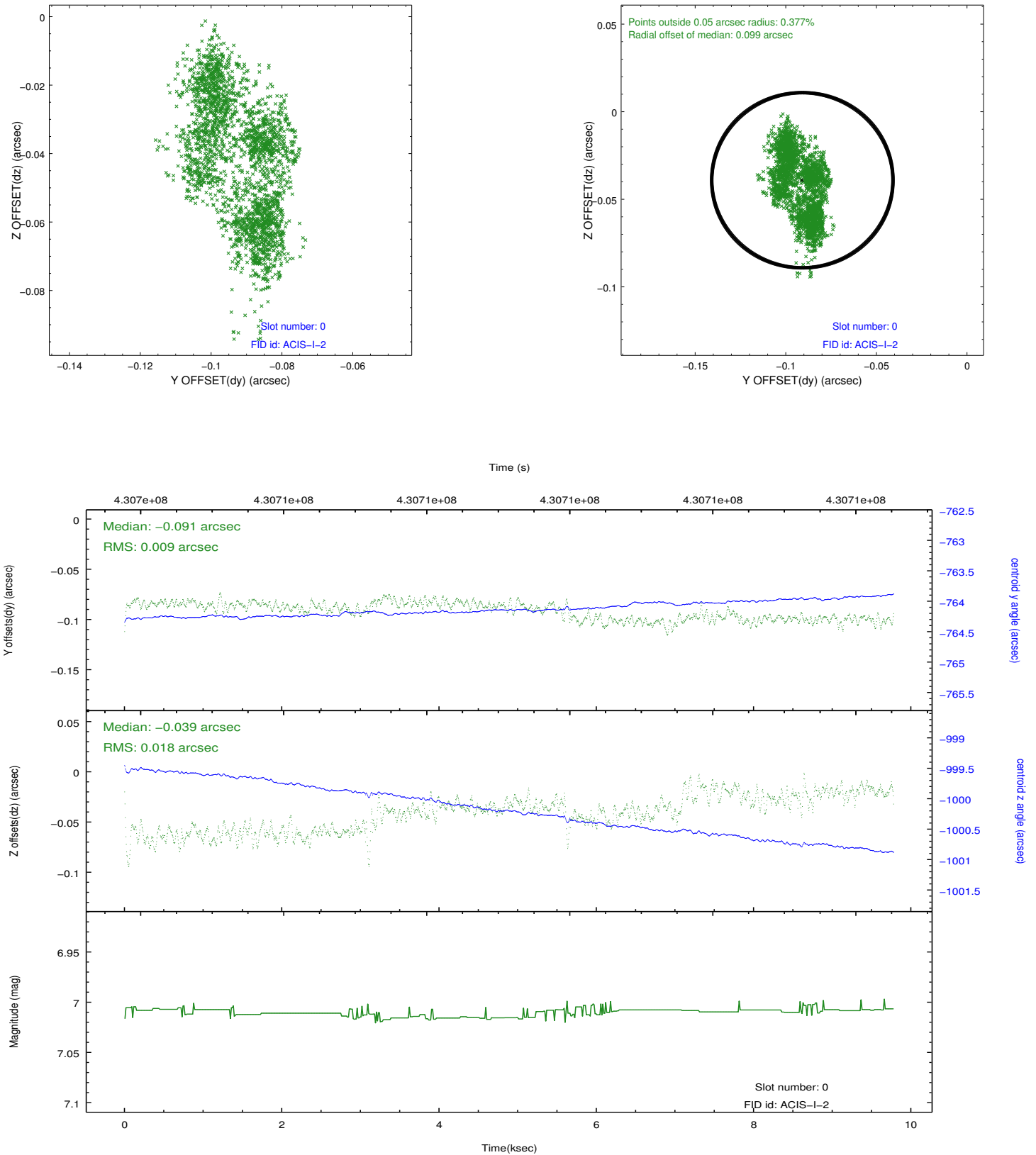


2.4.5 Slot 7

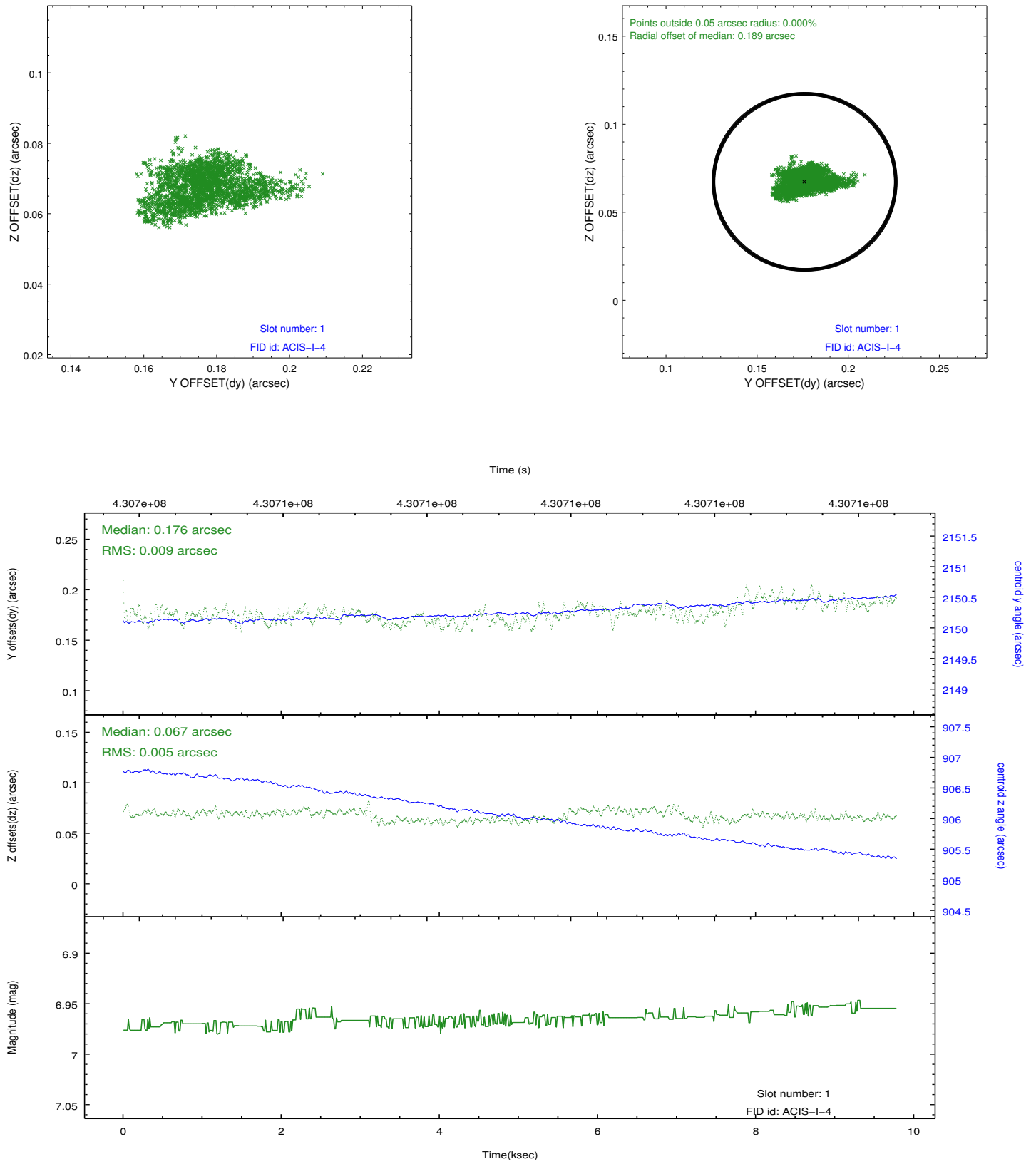


2.5 FID Slots

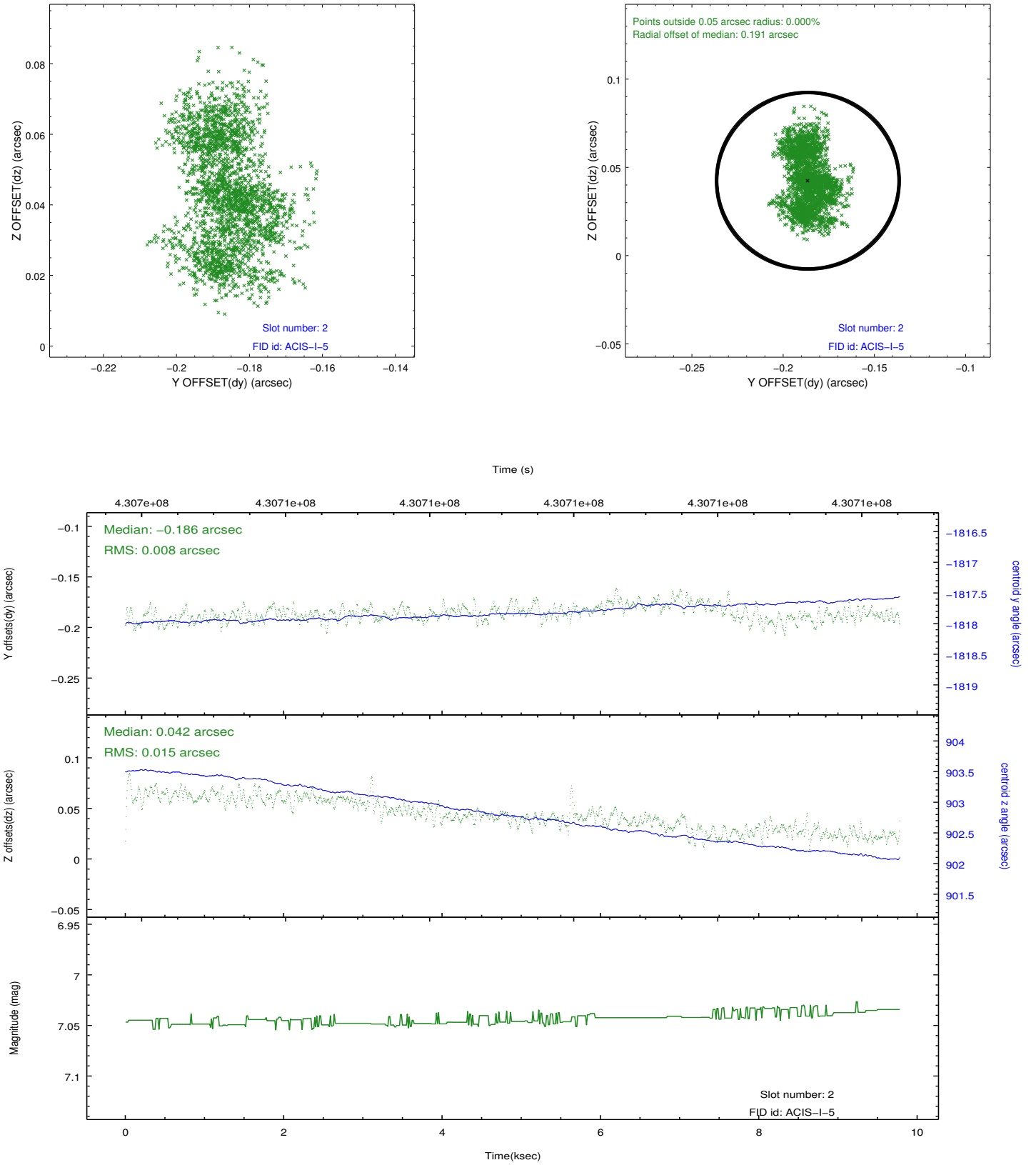
2.5.1 Slot 0



2.5.2 Slot 1



2.5.3 Slot 2



A Summary

A.1 Status

V&V Scientist	Jen Lauer
V&V Date (YYYY-MM-DD)	2012.02.22
V&V Edition	1
V&V Disposition and Status	OK
V&V Charge Time	9.0551000696421

A.2 Comments