

V&V Reference Report

L2 ASCDS Version : 8.4.3

Observation 13970 - L2 Version 1
Chandra X-Ray Center

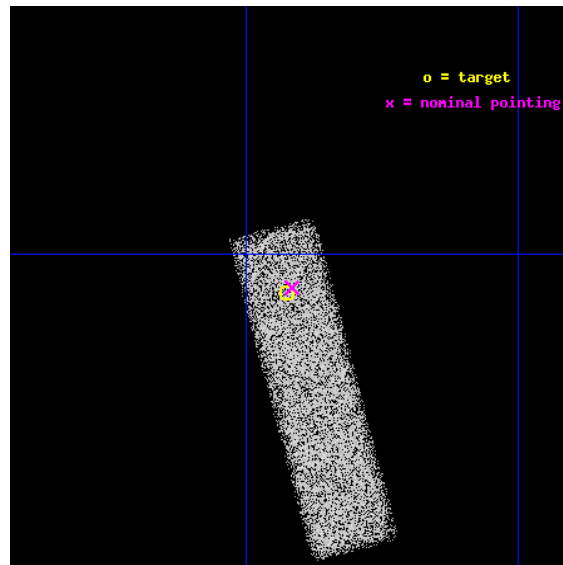
L2 Processing Date : Jan 1 2012

Contents

1	Front	2
2	OBI	3
2.1	OBI	3
2.1.1	Images	3
2.1.2	Bias	3
2.1.3	Parameters	4
2.1.4	Events	4
2.2	Compared Parameters	5
2.3	Aspect	6
2.4	Star Slots	9
2.4.1	Slot 3	9
2.4.2	Slot 4	10
2.4.3	Slot 5	11
2.4.4	Slot 6	12
2.4.5	Slot 7	13
2.5	FID Slots	14
2.5.1	Slot 0	14
2.5.2	Slot 1	15
2.5.3	Slot 2	16
A	Summary	17
A.1	Status	17
A.2	Comments	17

1 Front

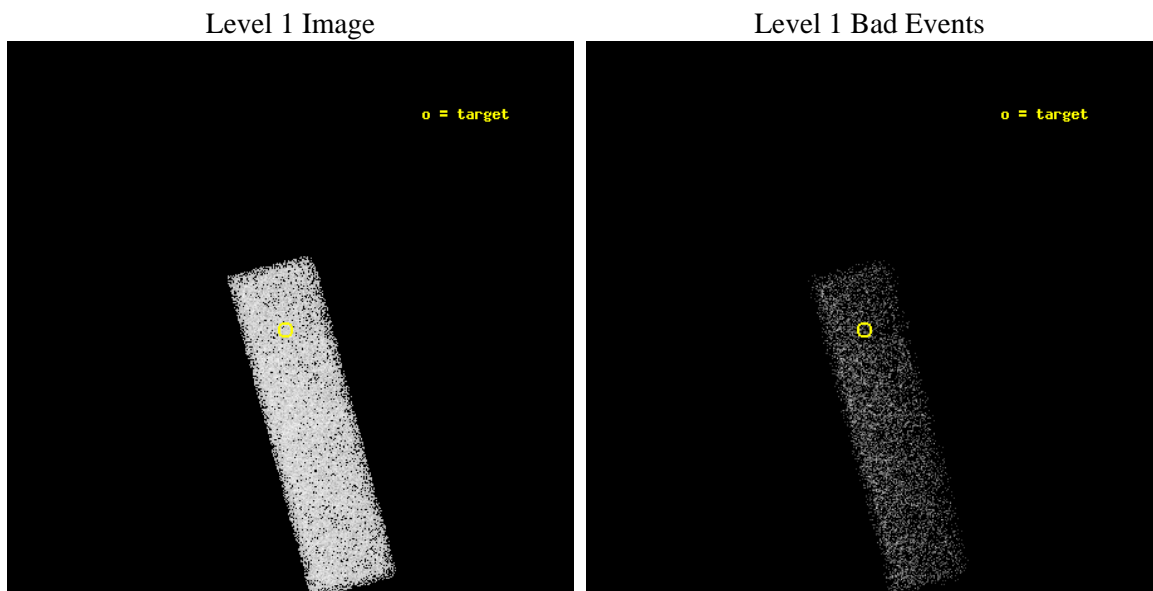
seq_num	702691	Sequence number
obs_id	13970	Observation id
title	Black Holes at the Centers of Nearby Dwarf Galaxies	Proposal title
observer	Dr. Edward Moran	Principal investigator
object	J0840+1818	Source name
dtcycle	0	
cycle	P	events from which exps? Prim/Second/Both
ra_targ	130.10625	Observer's specified target RA [deg]
dec_targ	18.316389	Observer's specified target Dec [deg]
ra_nom	130.10409435114	Nominal RA [deg]
dec_nom	18.3186039589	Nominal Dec [deg]
roll_nom	75.12395652338	Nominal Roll [deg]
revision	1	Processing version of data
ontime	24026.276010573	Sum of GTIs [s]
livetime	22853.872358578	Livetime [s]
ontime7	24026.276010573	Sum of GTIs [s]
l2events	22853	Number of level 2 events



2 OBI

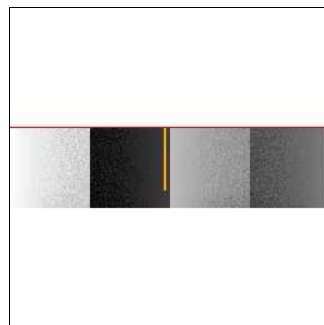
2.1 OBI

2.1.1 Images



2.1.2 Bias

Chip 7



2.1.3 Parameters

obi_num	0	Obi number	sched_exp_time	24000.000000	[s] Scheduled observation exposure time
ascdsver	8.4.3	Processing system revision	ontime	24026.276010573	Sum of GTIs [s]
caldsver	4.4.7	 	ontime7	24026.276010573	Sum of GTIs [s]
date	2012-01-01T19:55:59	Date and time of file creation	l1events	48746	Number of level 1 events
revision	1	Processing version of data			

2.1.4 Events

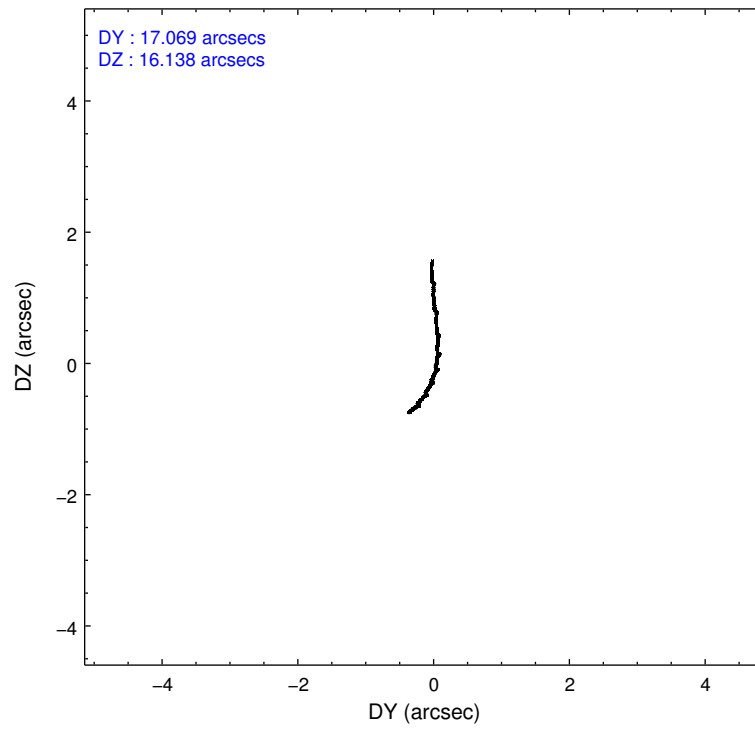
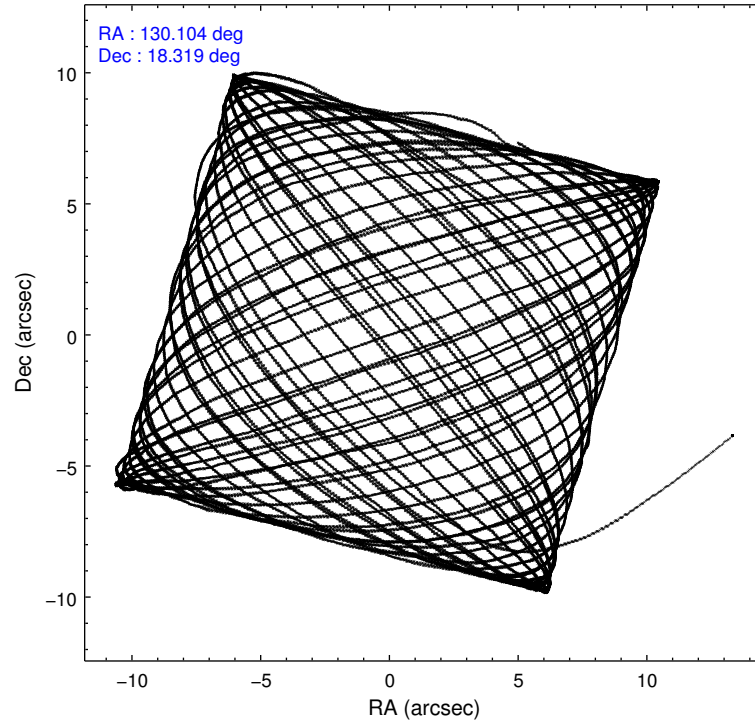
	ccd 7
level 1 events	48746
rejected events	25108
rejected %	51%

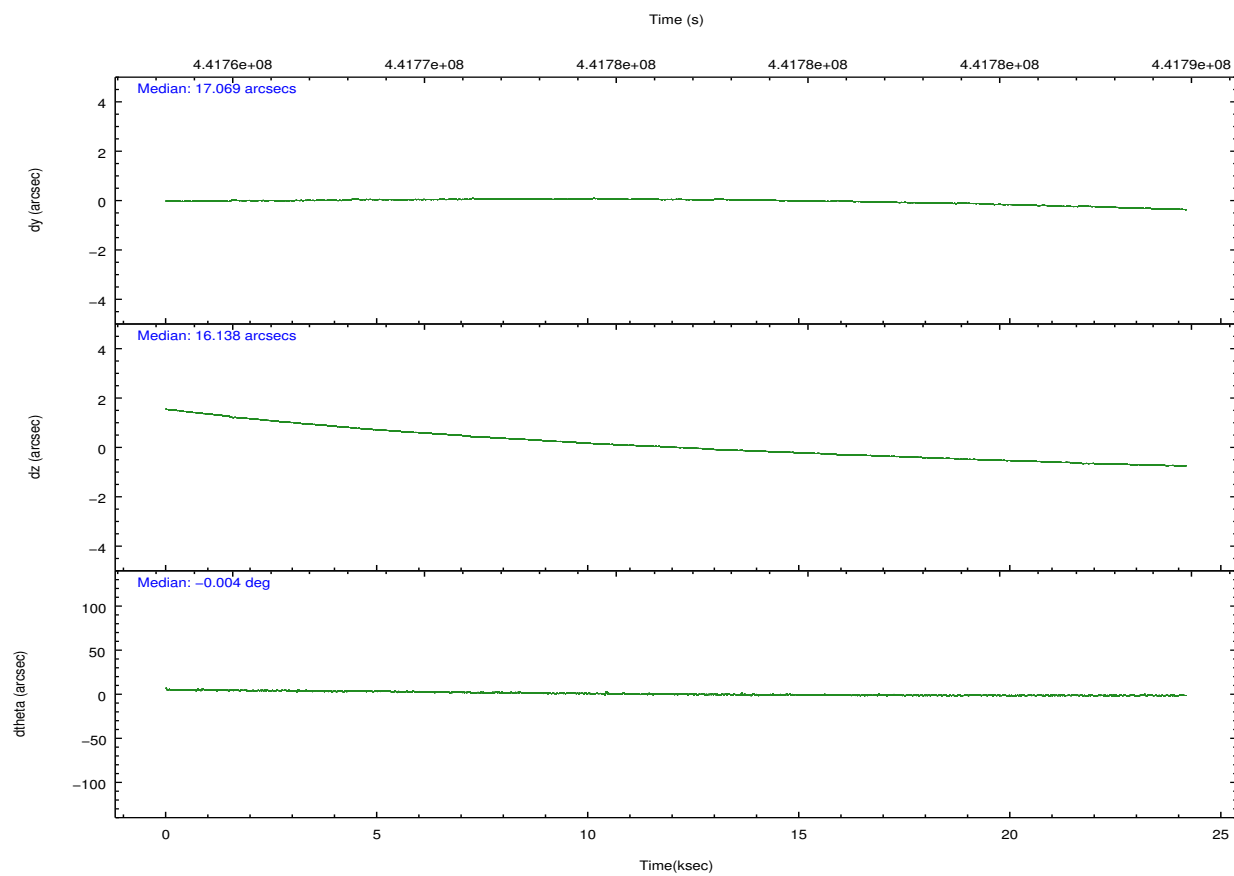
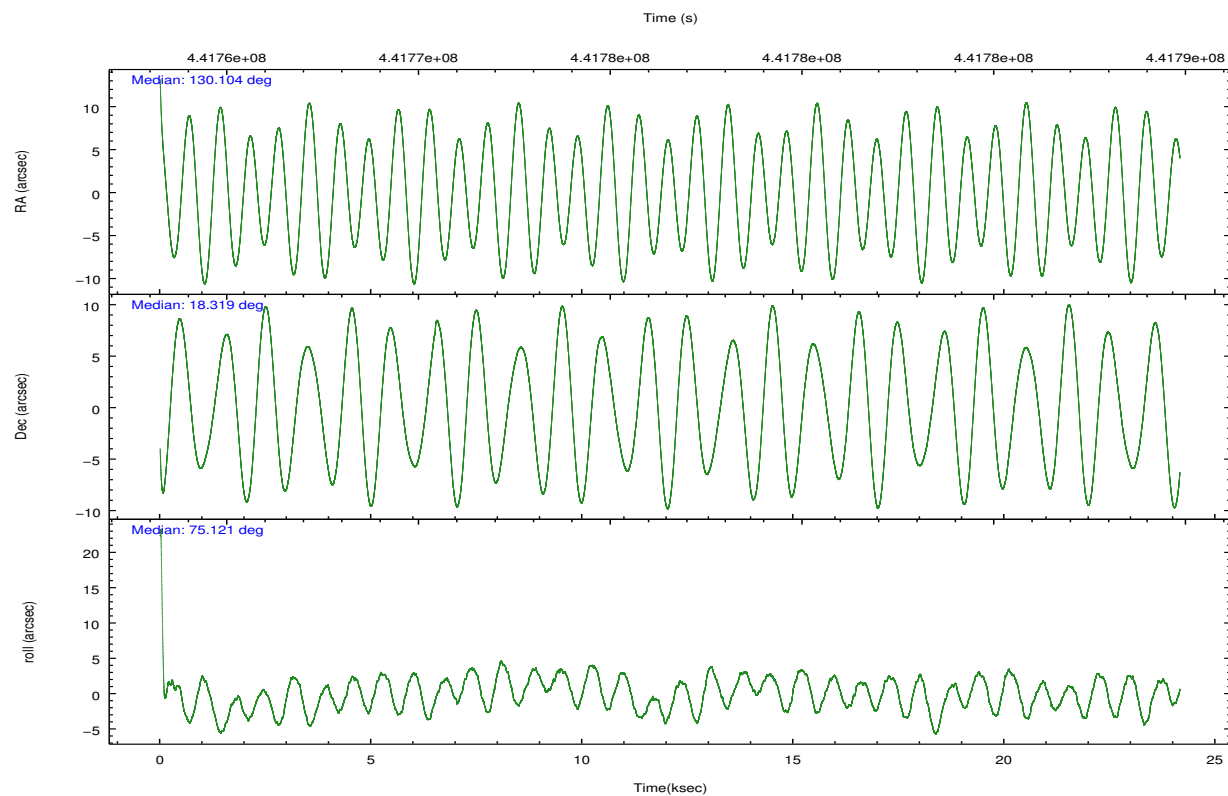
	ccd 7
grade 0 events	2387
	4%
grade 1 events	51
	0%
grade 2 events	4874
	9%
grade 3 events	2746
	5%
grade 4 events	2653
	5%
grade 5 events	5263
	10%
grade 6 events	10980
	22%
grade 7 events	19792
	40%

2.2 Compared Parameters

Parameter	Planned	Actual	Parameter	Planned	Actual
Instrument	ACIS	ACIS	Obspar format version number	7	7
Detector	ACIS-7	ACIS-7	Obspar file type	PREDICTED	ACTUAL
Grating	NONE	NONE	Obspar update status	NONE	UPDATED
Data mode	FAINT	FAINT	Number of optional ACIS chips dropped	0	0
Observation mode	POINTING	POINTING	On-chip summing requested	N	N
[deg] Pointing RA	130.111985	130.1040943511407	Subarray requested	CUSTOM	1/4
[deg] Pointing Dec	18.292321	18.31860395890028	Subarray start row	385	385
[deg] Pointing Roll	74.964834	75.12395652338012	Subarray row count	256	256
[mm] SIM focus pos	-0.684267	-0.6828225247311905	Alternating exposures requested	N	N
[mm] SIM defocus	0	0.001444936568705701	[s] Primary exposure time	0.000000	0.8
[mm] SIM translation stage pos	-190.132523	-190.1425803651734			
[mm] SIM translation stage offset	0	0.01005778216563158			
[s] Observation start time (MET)	441764653.184000	441763265.38334			
Observation start date	2012-01-01T00:23:07	2012-01-01T00:01:05			
[s] Observation end time (MET)	441788653.184000	441789312.1722			
Observation end date	2012-01-01T07:03:07	2012-01-01T07:15:12			
Read mode	TIMED	TIMED			

2.3 Aspect



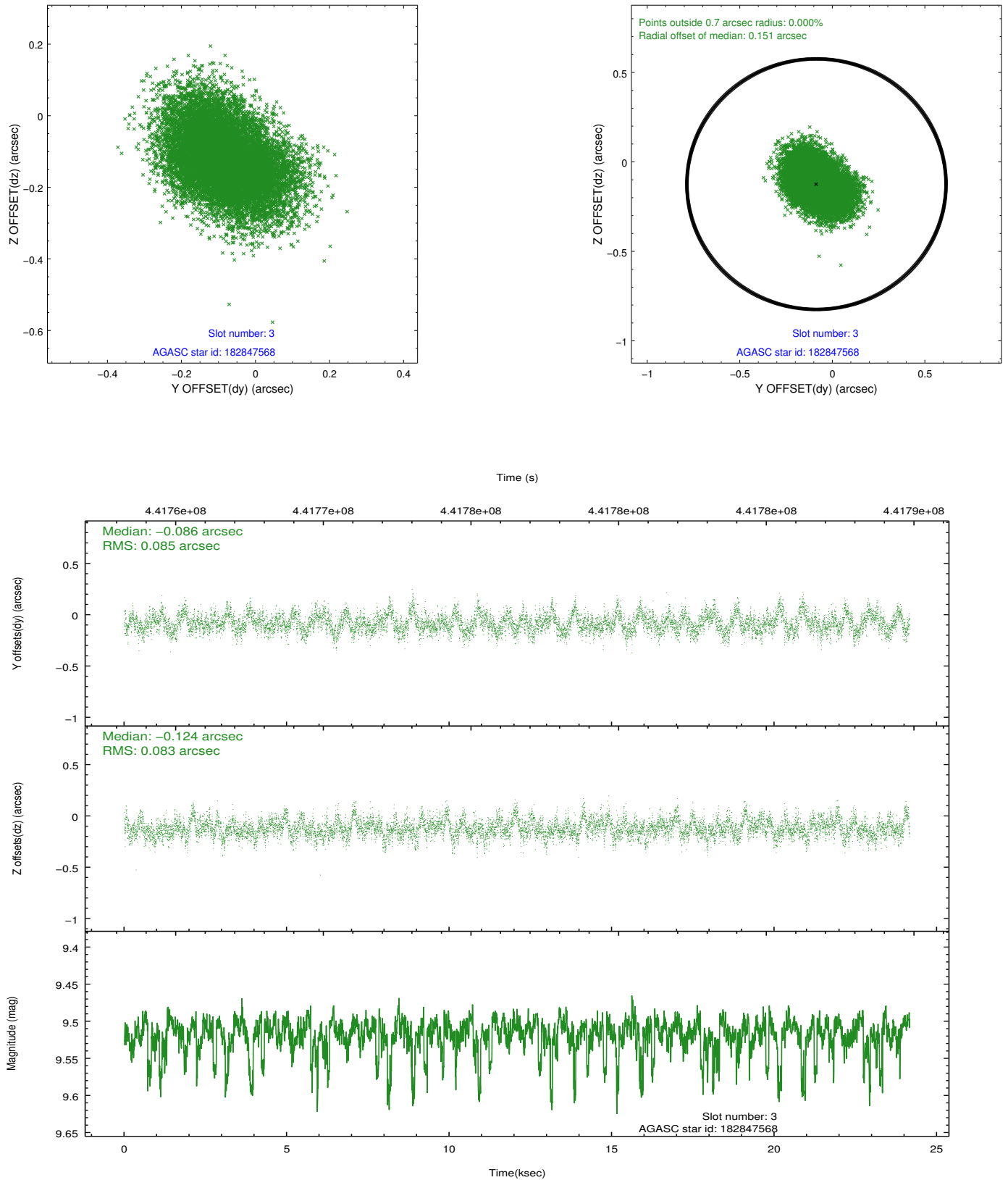


Slot Statistics

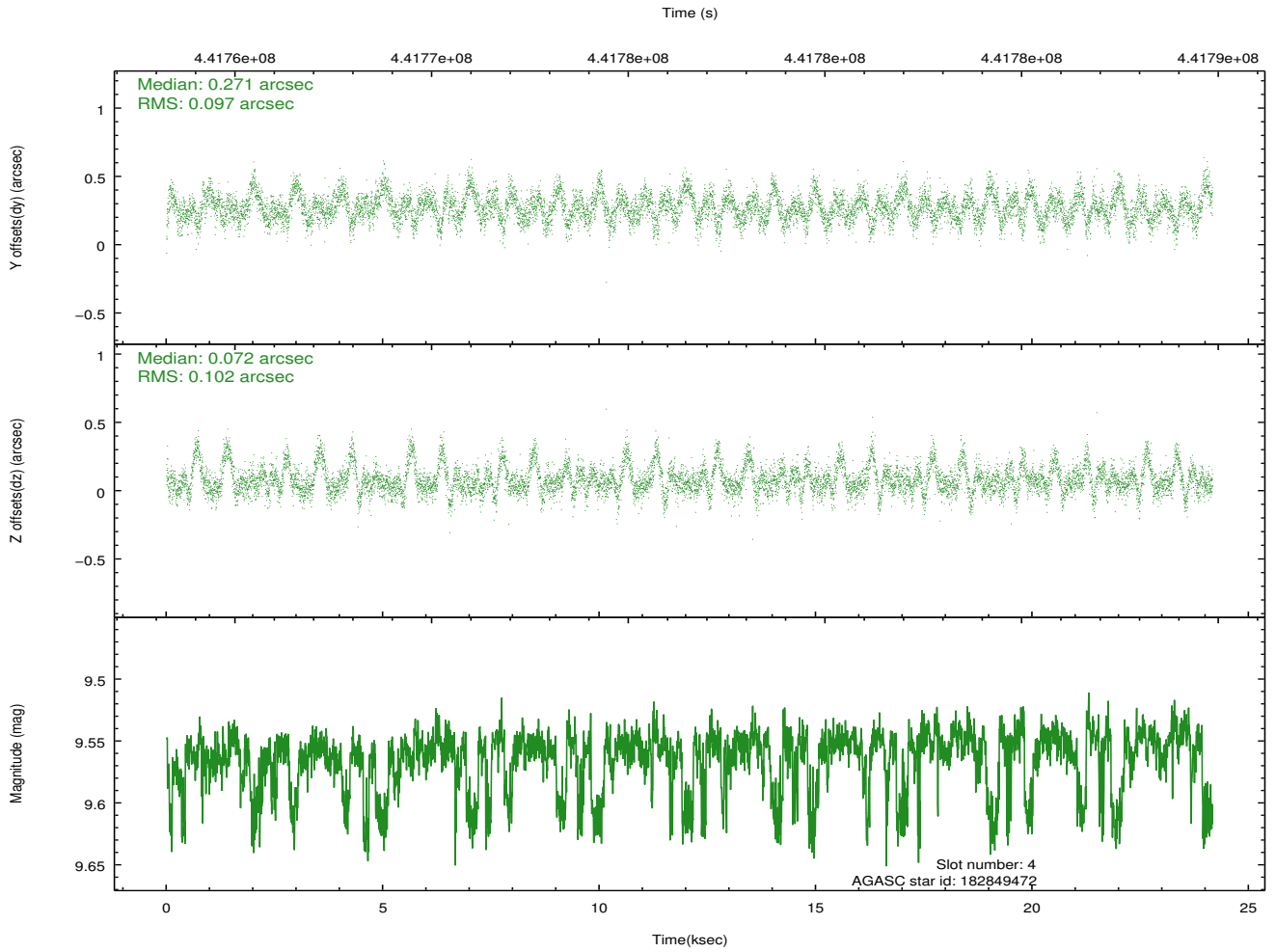
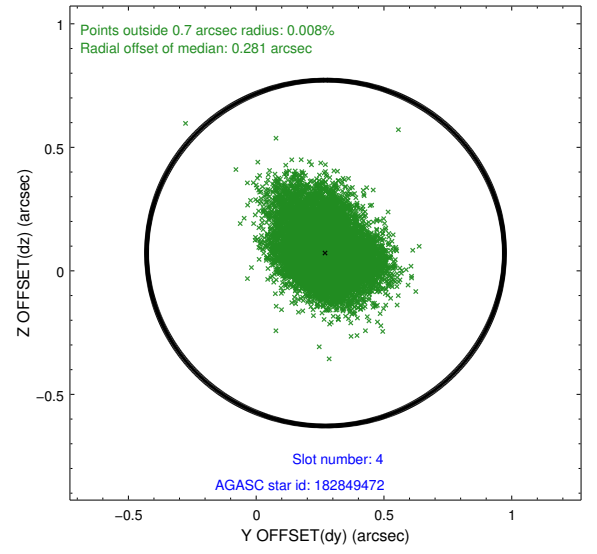
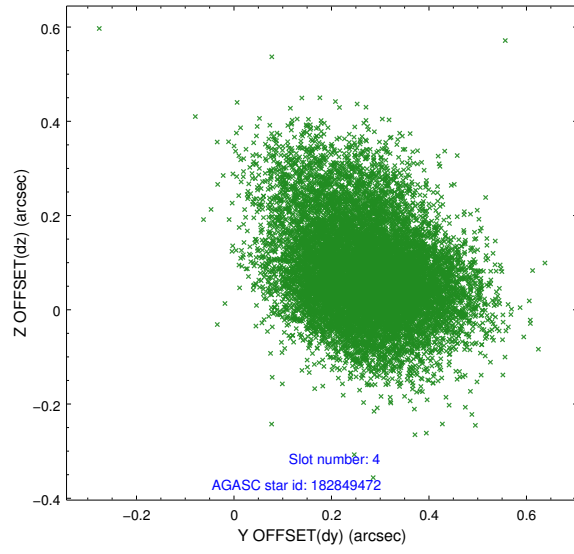
slot	status	id	mag	n_pts	med_dy	med_dz	dr1	dr2	ra	dec	mean_y	mean_z
0	FID	ACIS-S-2	6.94	5892	-0.103	0.000	0.016	0.041	0.000000	0.000000	-770.16	-1737.62
1	FID	ACIS-S-4	7.02	5893	0.210	0.049	0.012	0.025	0.000000	0.000000	2143.38	170.77
2	FID	ACIS-S-5	7.05	5893	-0.139	-0.042	0.014	0.038	0.000000	0.000000	-1822.87	164.52
3	GUIDE	182847568	9.52	11727	-0.086	-0.124	0.126	0.210	129.388181	17.986424	-1701.94	2109.15
4	GUIDE	182849472	9.56	11762	0.271	0.072	0.147	0.251	129.445217	17.831642	-2190.50	1777.98
5	GUIDE	182857144	8.73	11783	-0.023	0.048	0.085	0.145	130.262322	18.491338	825.04	-309.17
6	GUIDE	182858520	9.24	11759	-0.033	-0.019	0.115	0.187	129.928988	18.552918	744.39	846.84
7	GUIDE	182853936	9.02	11782	-0.128	0.014	0.102	0.166	129.788750	18.951869	2008.49	1679.58

2.4 Star Slots

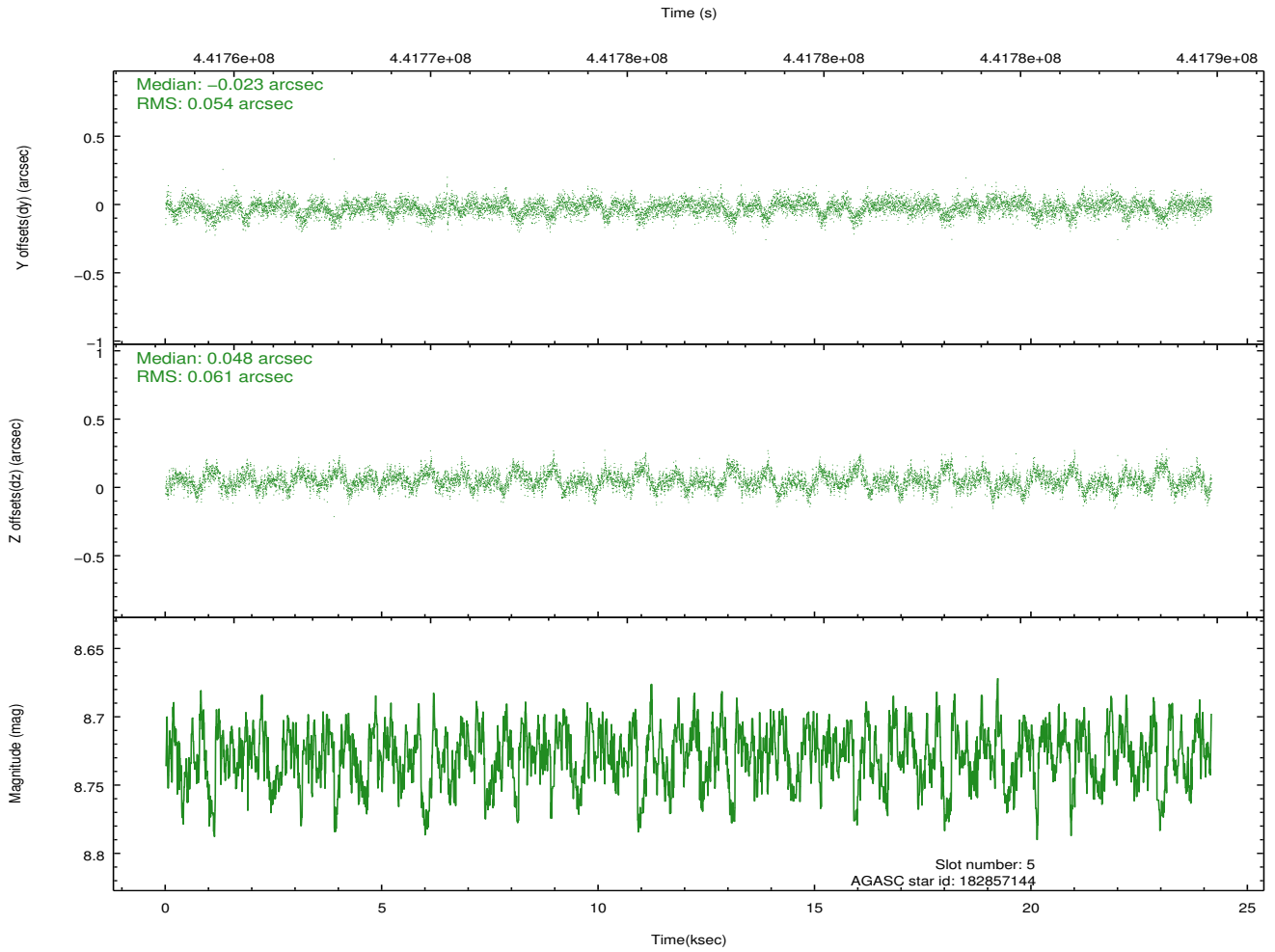
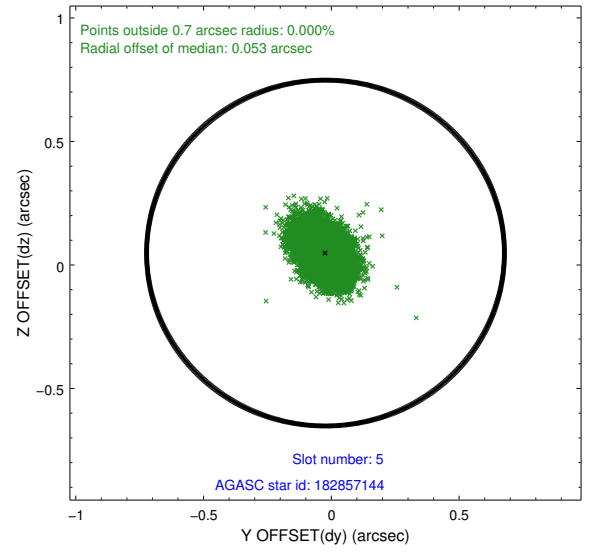
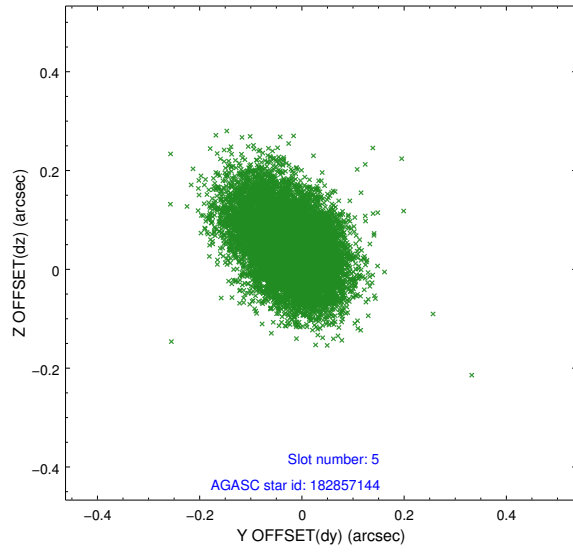
2.4.1 Slot 3



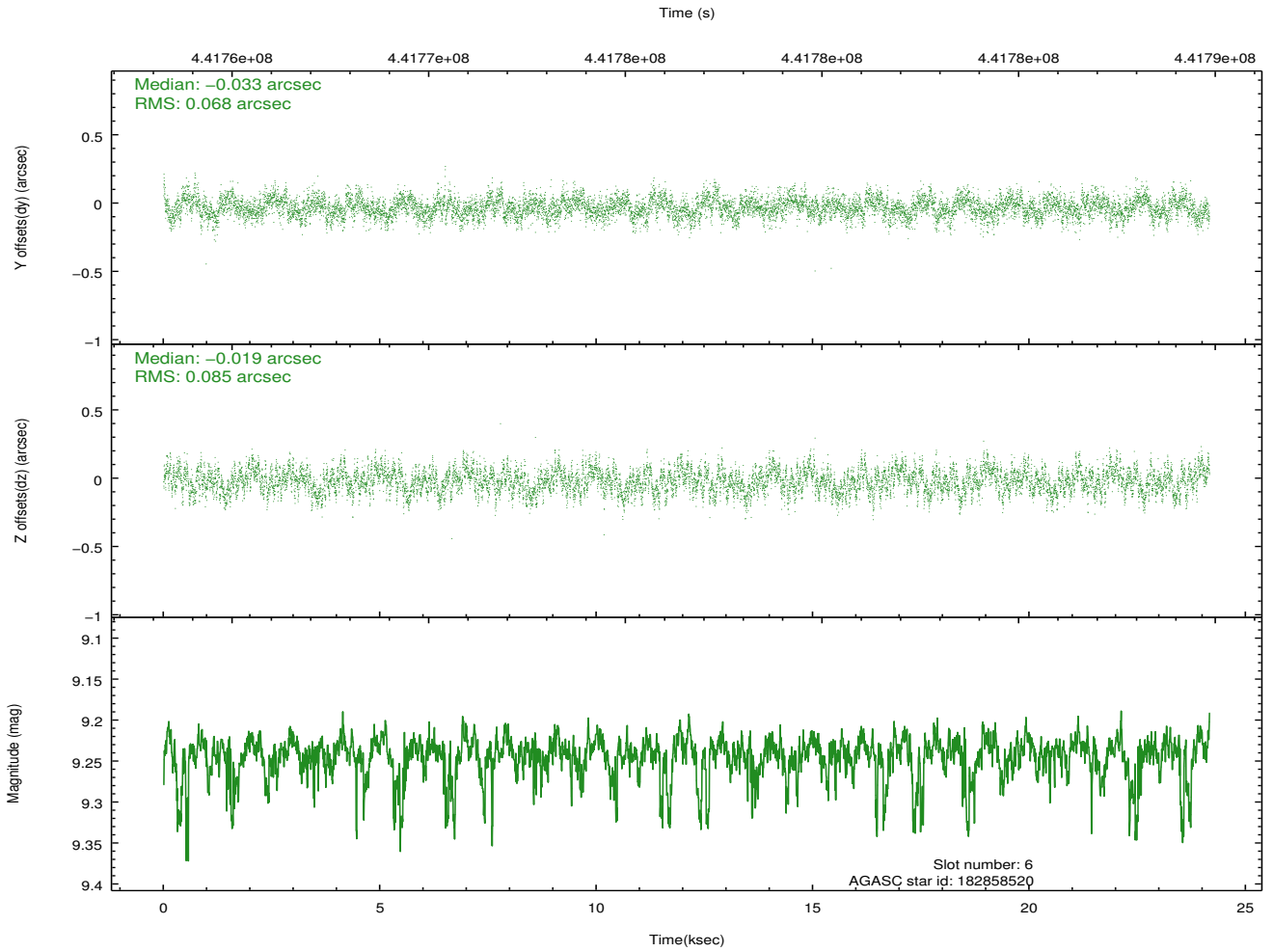
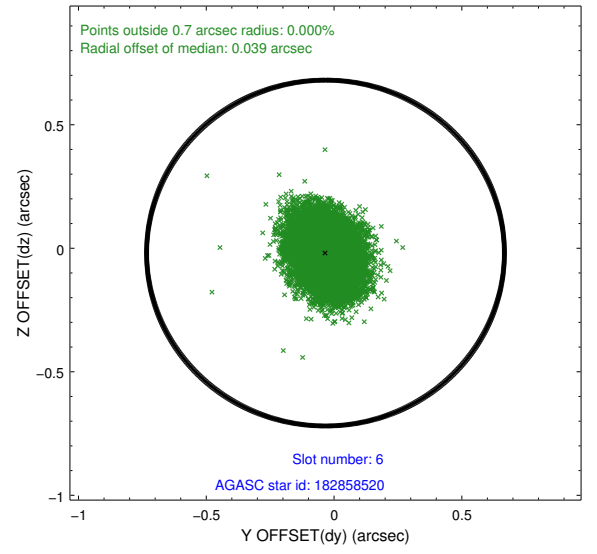
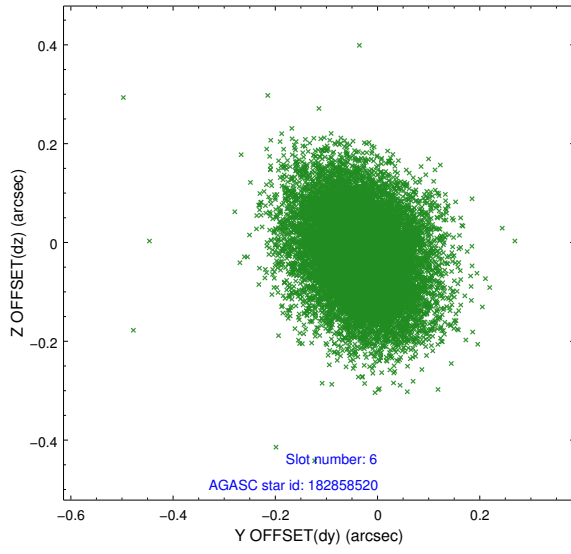
2.4.2 Slot 4



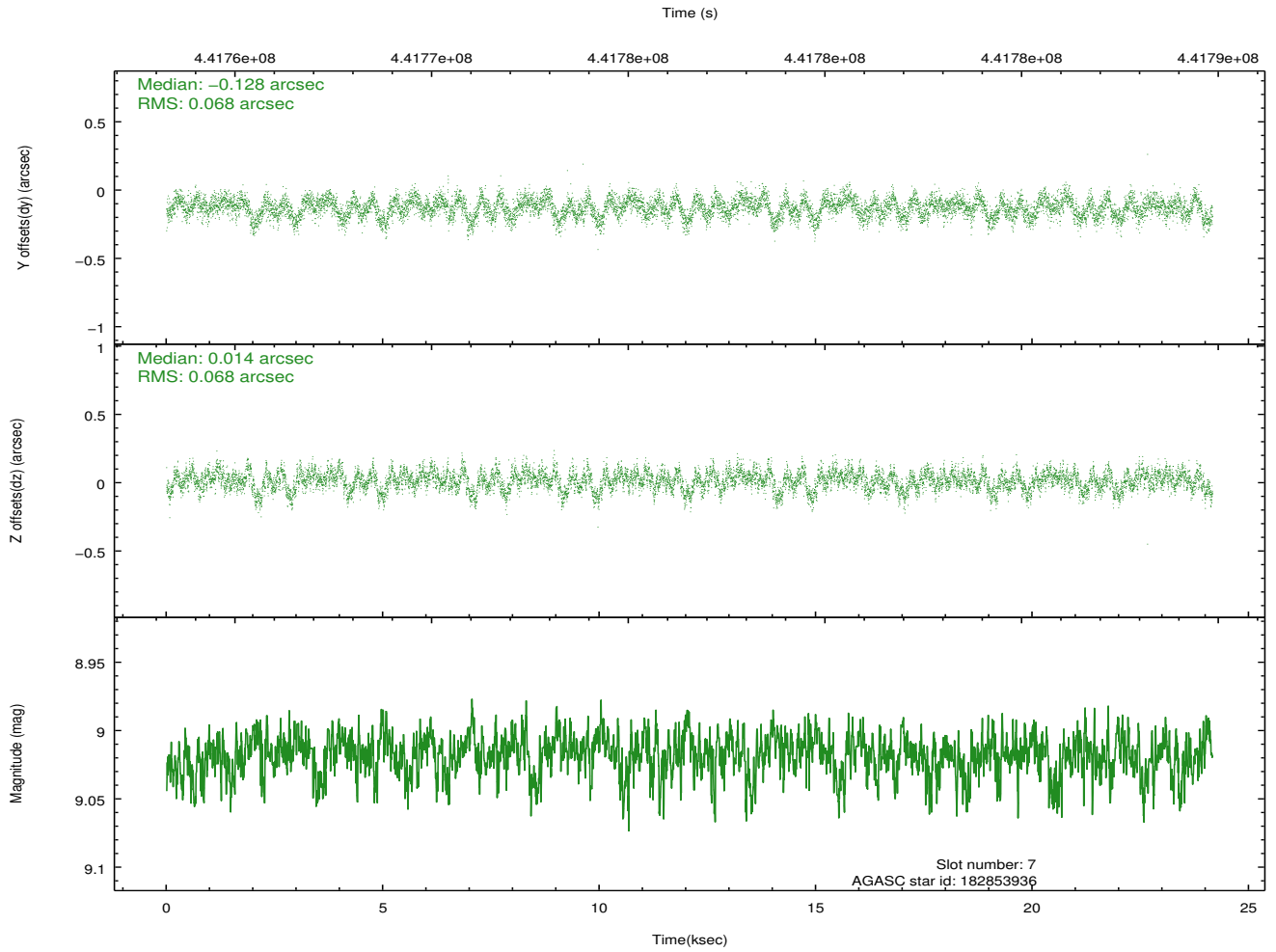
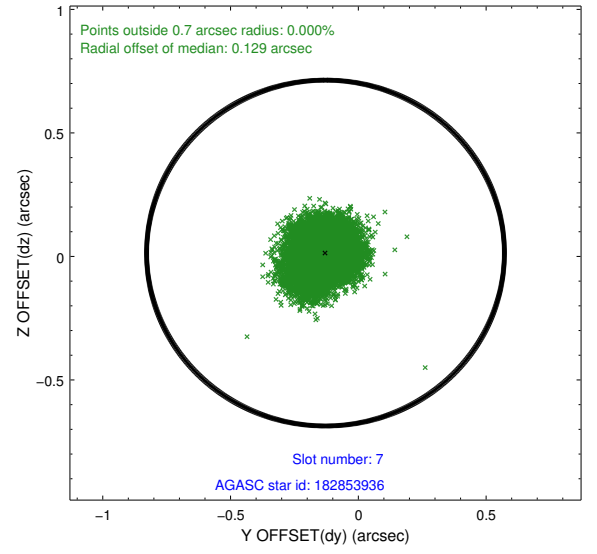
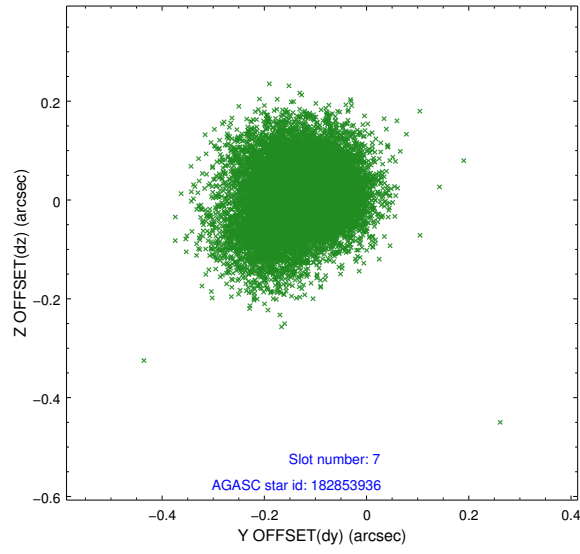
2.4.3 Slot 5



2.4.4 Slot 6

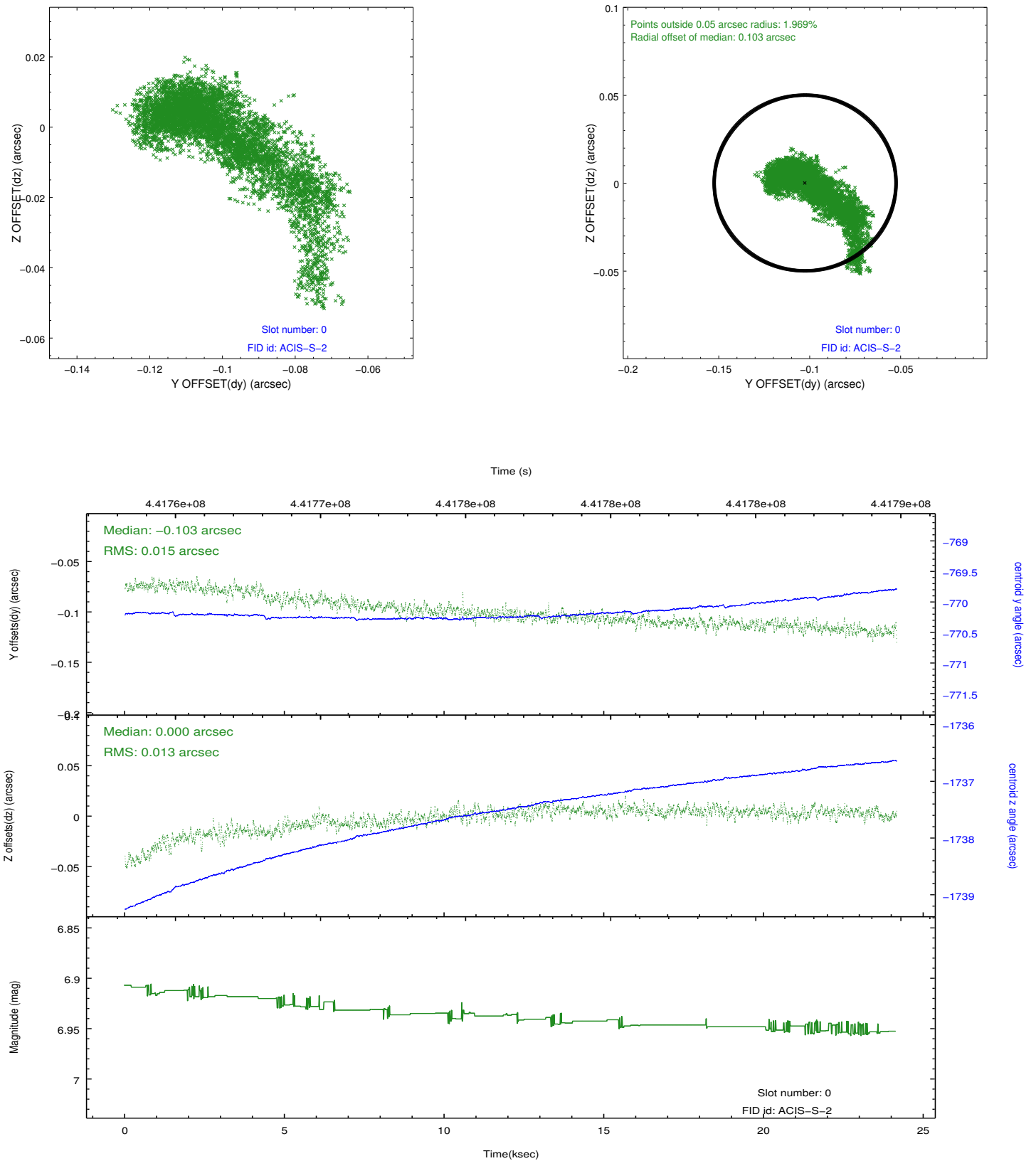


2.4.5 Slot 7

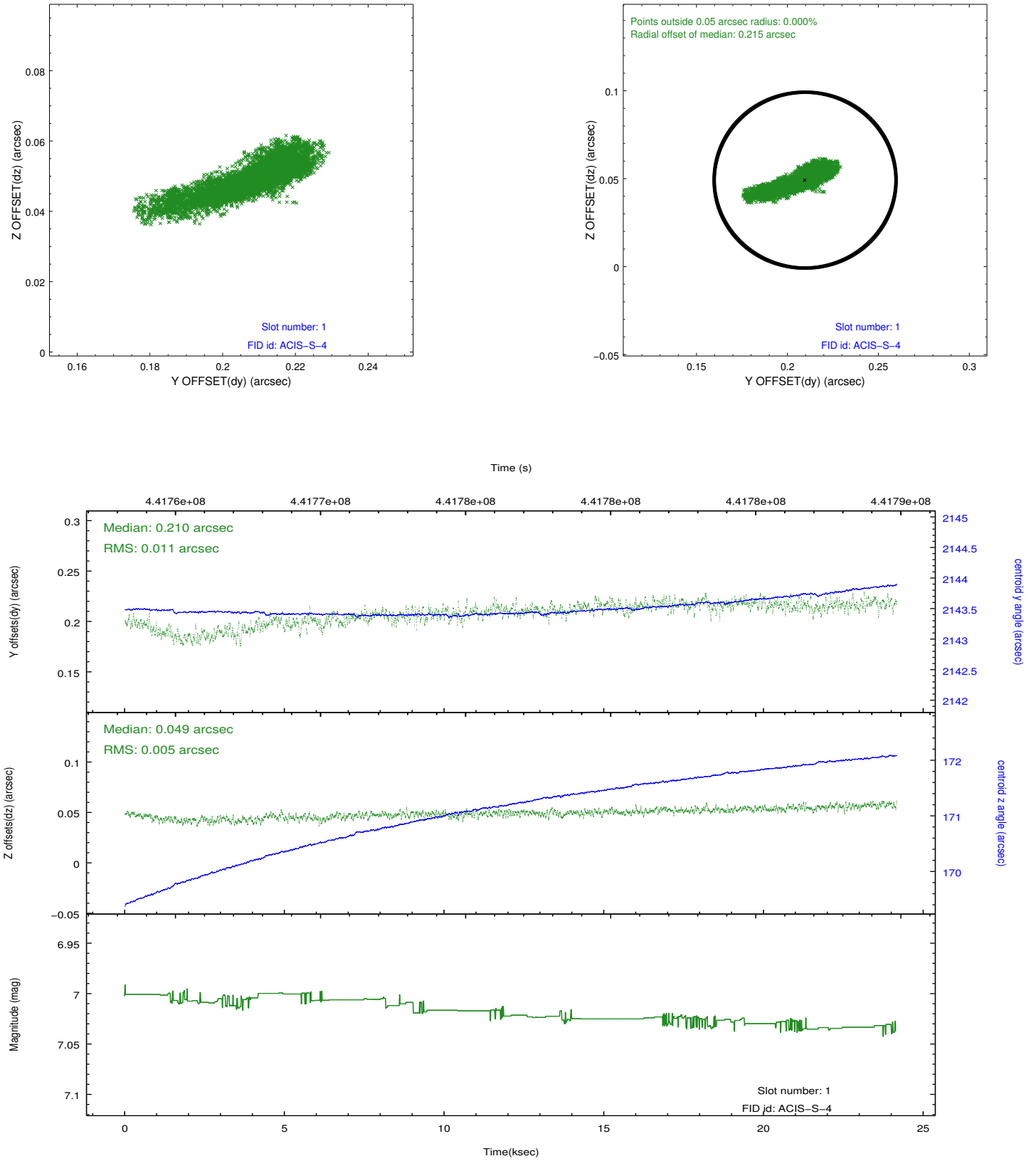


2.5 FID Slots

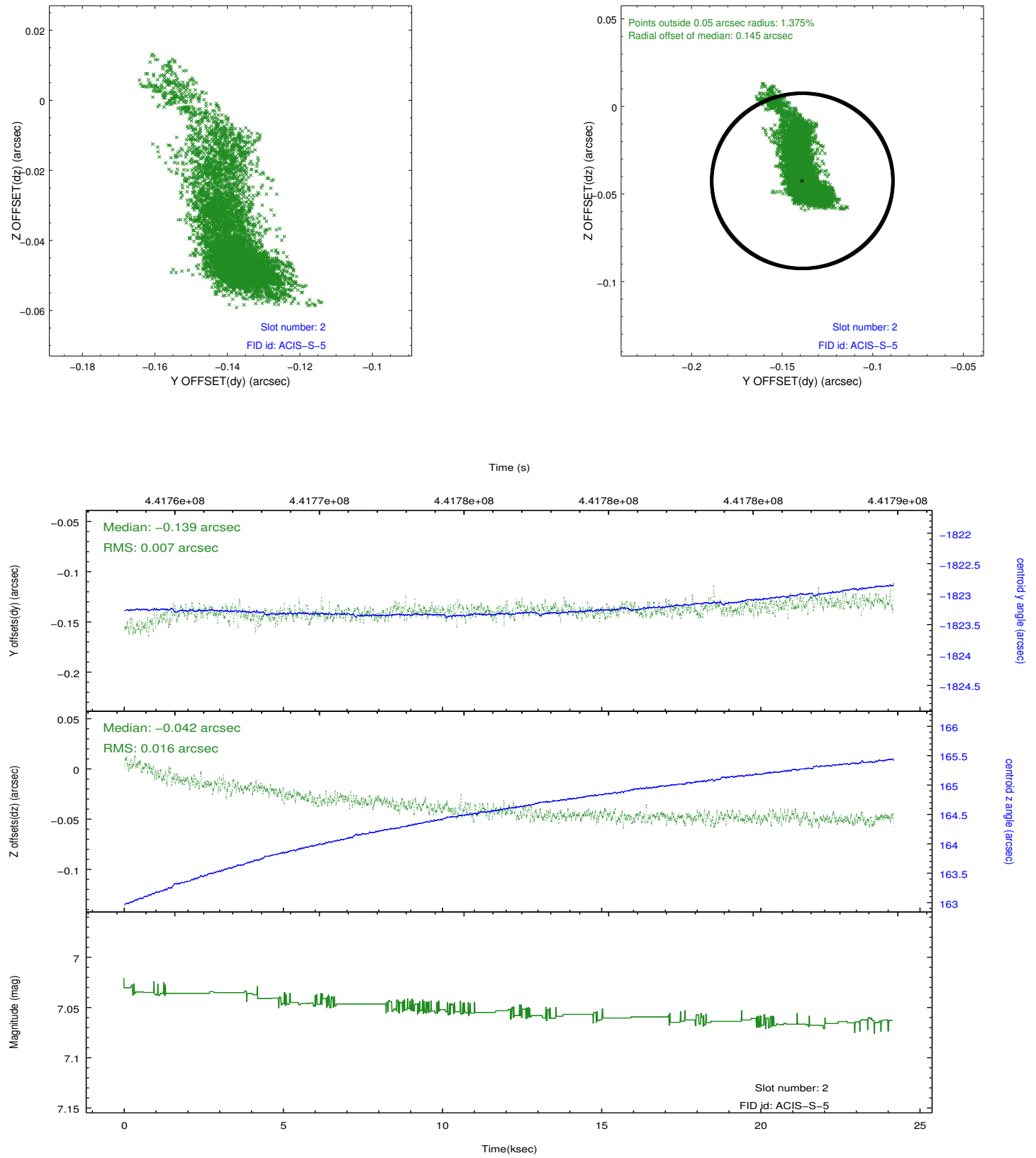
2.5.1 Slot 0



2.5.2 Slot 1



2.5.3 Slot 2



A Summary

A.1 Status

V&V Scientist	Joy Nichols
V&V Date (YYYY-MM-DD)	2012.01.03
V&V Edition	1
V&V Disposition and Status	OK
V&V Charge Time	24.026276010573

A.2 Comments