

V&V Reference Report

L2 ASCDS Version : 8.4.5

Observation 13936 - L2 Version 1
Chandra X-Ray Center

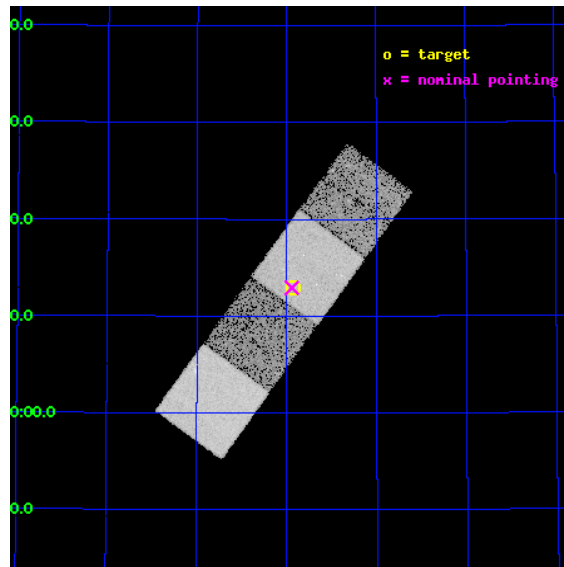
L2 Processing Date : Aug 14 2012

Contents

1	Front	2
2	OBI	3
2.1	OBI	3
2.1.1	Images	3
2.1.2	Bias	3
2.1.3	Parameters	4
2.1.4	Events	4
2.2	Compared Parameters	5
2.3	Aspect	6
2.4	Star Slots	9
2.4.1	Slot 3	9
2.4.2	Slot 4	10
2.4.3	Slot 5	11
2.4.4	Slot 6	12
2.4.5	Slot 7	13
2.5	FID Slots	14
2.5.1	Slot 0	14
2.5.2	Slot 1	15
2.5.3	Slot 2	16
A	Summary	17
A.1	Status	17
A.2	Comments	17

1 Front

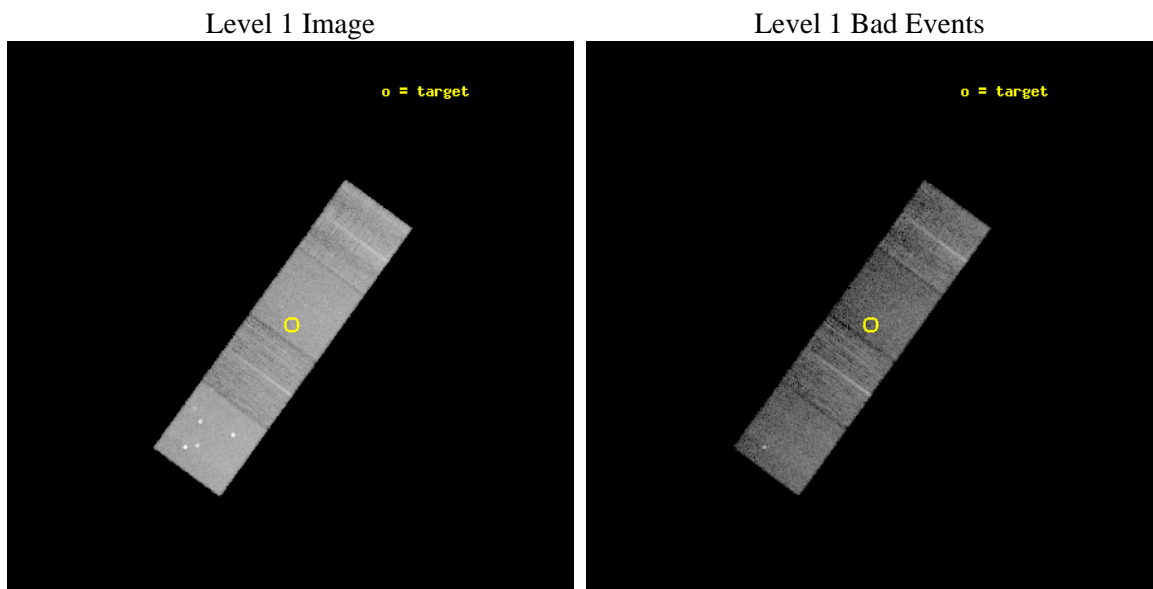
seq_num	702660	Sequence number
obs_id	13936	Observation id
title	Probing the High End of the Quasar Black Hole Mass Function	Propos
observer	Dr. Martin Elvis	Principal investigator
object	SDSS J121055.44+511254.7	Source name
dtcycle	0	
cycle	P	events from which exps? Prim/Second/Both
ra_targ	182.730833	Observer's specified target RA [deg]
dec_targ	51.215222	Observer's specified target Dec [deg]
ra_nom	182.73567422595	Nominal RA [deg]
dec_nom	51.215404957846	Nominal Dec [deg]
roll_nom	305.93745927251	Nominal Roll [deg]
revision	1	Processing version of data
ontime	14269.300109744	Sum of GTIs [s]
livetime	14082.861198904	Livetime [s]
ontime5	14269.300109744	Sum of GTIs [s]
ontime6	14269.300109744	Sum of GTIs [s]
ontime7	14269.300109744	Sum of GTIs [s]
ontime8	14269.300109744	Sum of GTIs [s]
l2events	112376	Number of level 2 events



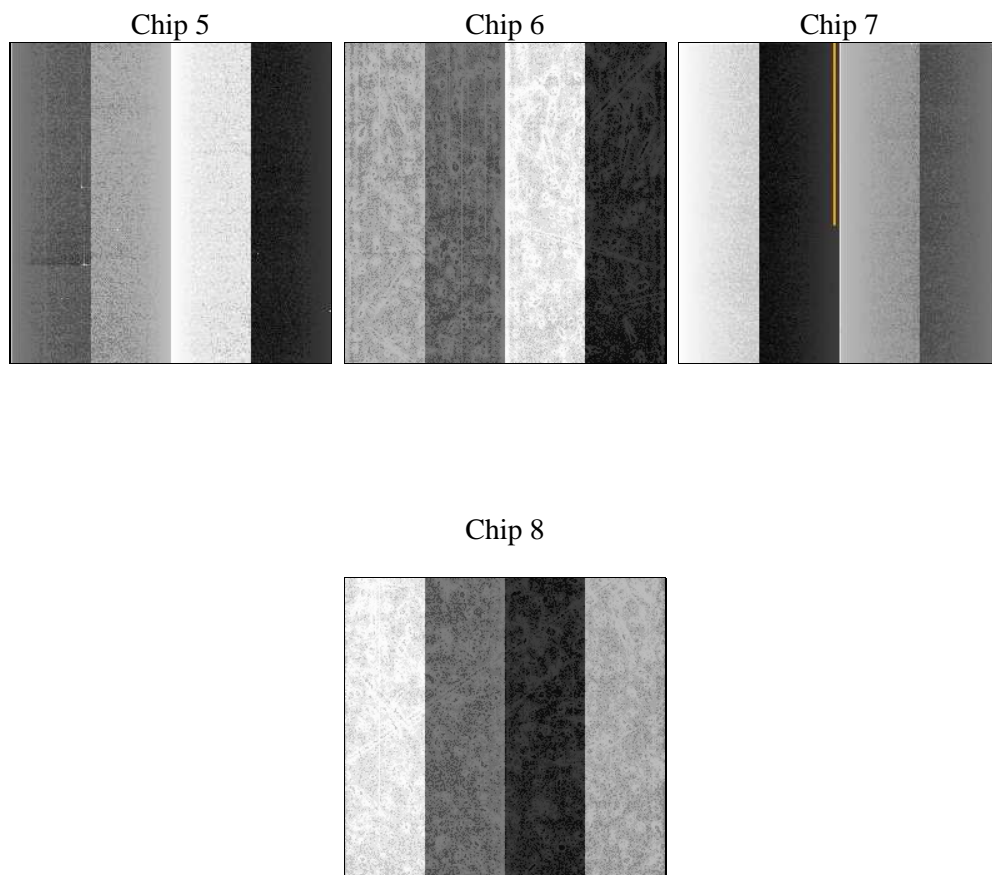
2 OBI

2.1 OBI

2.1.1 Images



2.1.2 Bias



2.1.3 Parameters

obi_num	0	Obi number	sched_exp_time	14200.000000	[s] Scheduled observation exposure time
ascdsver	8.4.5	Processing system revision	ontime	14269.300109744	Sum of GTIs [s]
caldsver	4.5.1.1	 	ontime5	14269.300109744	Sum of GTIs [s]
date	2012-08-15T00:42:29	Date and time of file creation	ontime6	14269.300109744	Sum of GTIs [s]
revision	1	Processing version of data	ontime7	14269.300109744	Sum of GTIs [s]
			ontime8	14269.300109744	Sum of GTIs [s]
			l1events	388156	Number of level 1 events

2.1.4 Events

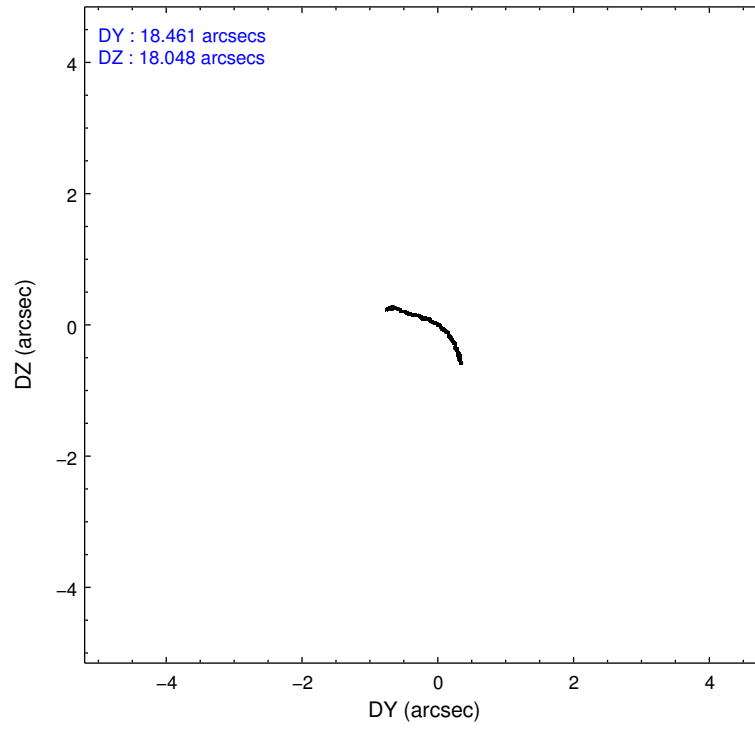
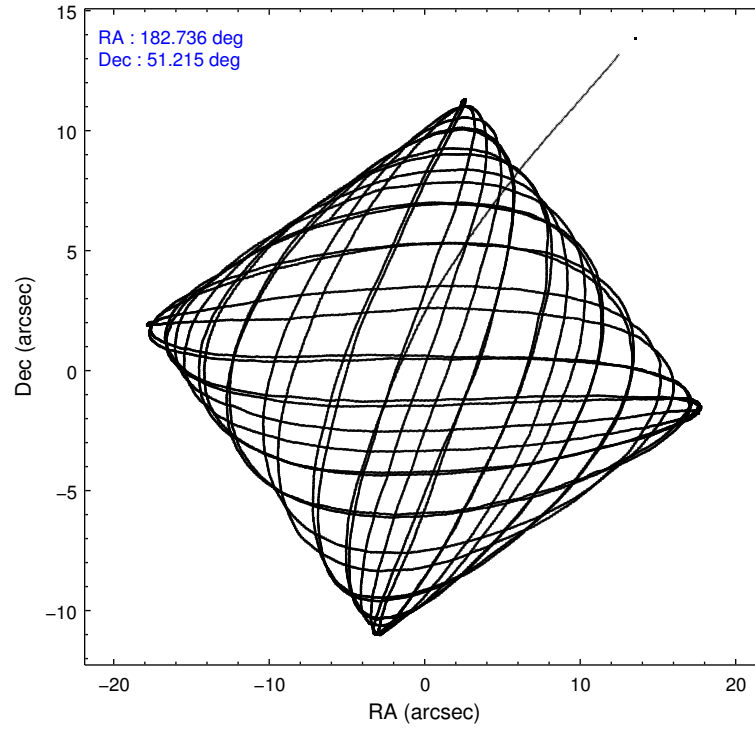
	ccd 5	ccd 6	ccd 7	ccd 8
level 1 events	124507	72817	95265	95567
rejected events	59933	64174	52834	69555
rejected %	48%	88%	55%	72%

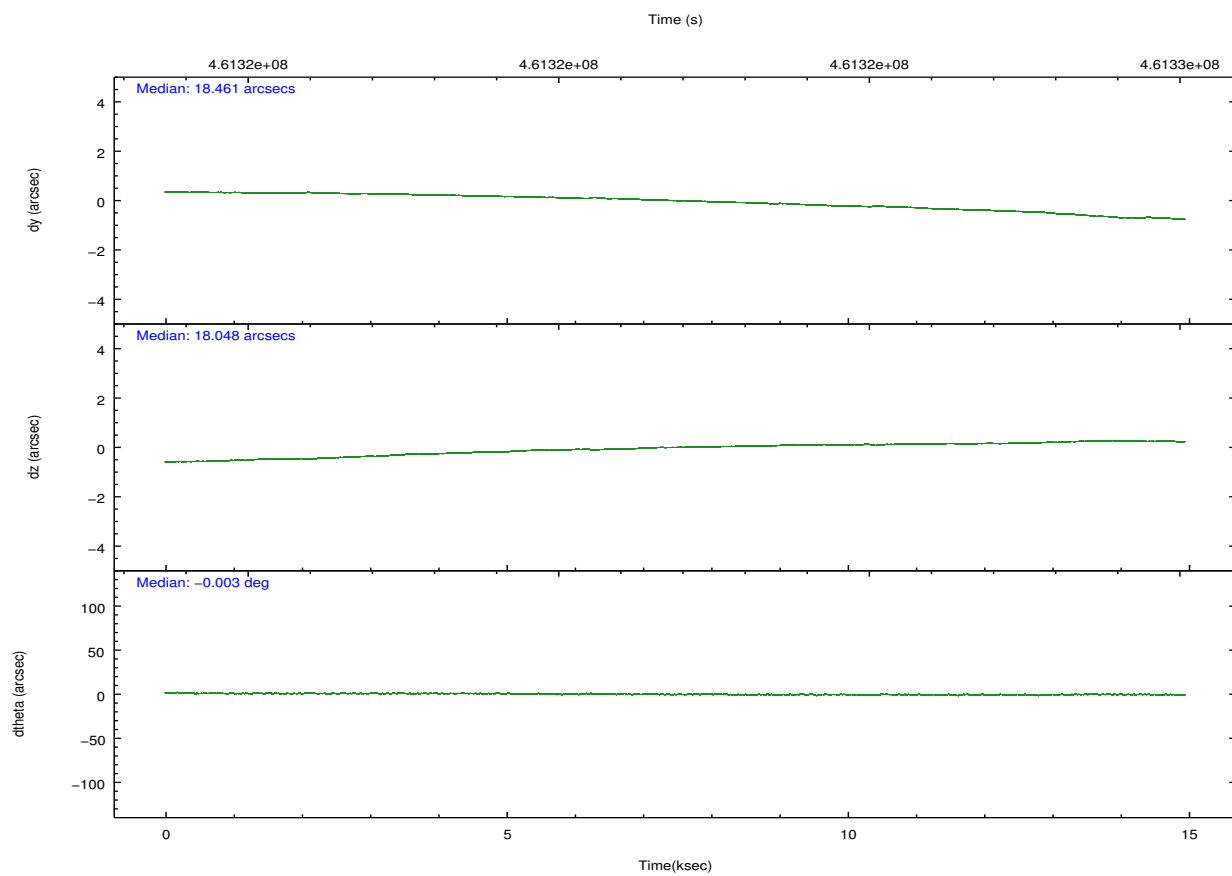
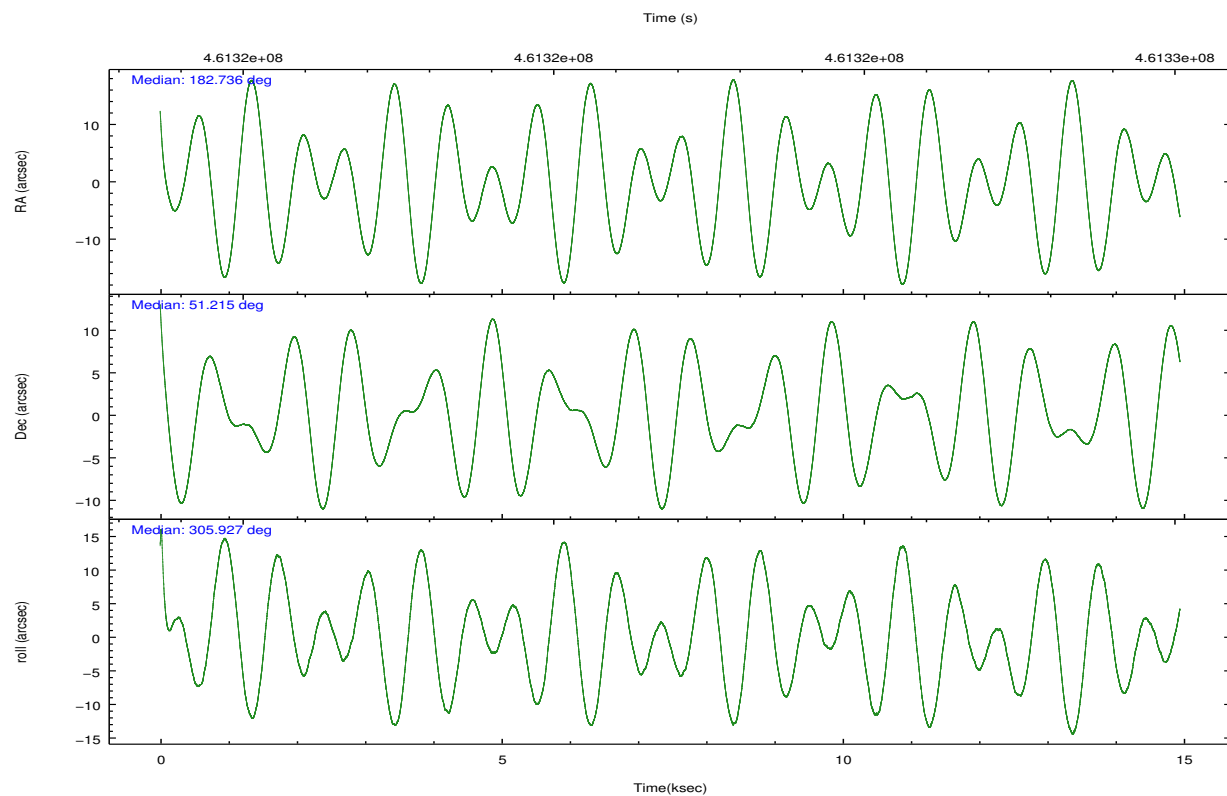
	ccd 5	ccd 6	ccd 7	ccd 8
grade 0 events	11926	2883	3869	7776
	9%	3%	4%	8%
grade 1 events	649	39	123	66
	0%	0%	0%	0%
grade 2 events	17645	1965	8667	6084
	14%	2%	9%	6%
grade 3 events	2220	895	3643	2615
	1%	1%	3%	2%
grade 4 events	2139	889	3650	2546
	1%	1%	3%	2%
grade 5 events	9151	3545	9803	5346
	7%	4%	10%	5%
grade 6 events	30678	2015	22623	7022
	24%	2%	23%	7%
grade 7 events	50099	60586	42887	64112
	40%	83%	45%	67%

2.2 Compared Parameters

Parameter	Planned	Actual	Parameter	Planned	Actual
Instrument	ACIS	ACIS	Obspar format version number	7	7
Detector	ACIS-5678	ACIS-5678	Obspar file type	PREDICTED	ACTUAL
Grating	NONE	NONE	Obspar update status	NONE	UPDATED
Data mode	FAINT	FAINT	Number of optional ACIS chips dropped	0	0
Observation mode	POINTING	POINTING	On-chip summing requested	N	N
[deg] Pointing RA	182.695550	182.7356742259481	Subarray requested	NONE	NONE
[deg] Pointing Dec	51.226200	51.21540495784646	Alternating exposures requested	N	N
[deg] Pointing Roll	305.812098	305.9374592725066	[s] Primary exposure time	0.000000	3.1
[mm] SIM focus pos	-0.684267	-0.6828225247311905			
[mm] SIM defocus	0	0.001444936568705701			
[mm] SIM translation stage pos	-190.132523	-190.1400660498719			
[mm] SIM translation stage offset	0	0.00754346686406393			
[s] Observation start time (MET)	461315134.184000	461313763.81806			
Observation start date	2012-08-14T07:04:27	2012-08-14T06:42:43			
[s] Observation end time (MET)	461329334.184000	461330424.68146			
Observation end date	2012-08-14T11:01:07	2012-08-14T11:20:24			
Read mode	TIMED	TIMED			

2.3 Aspect



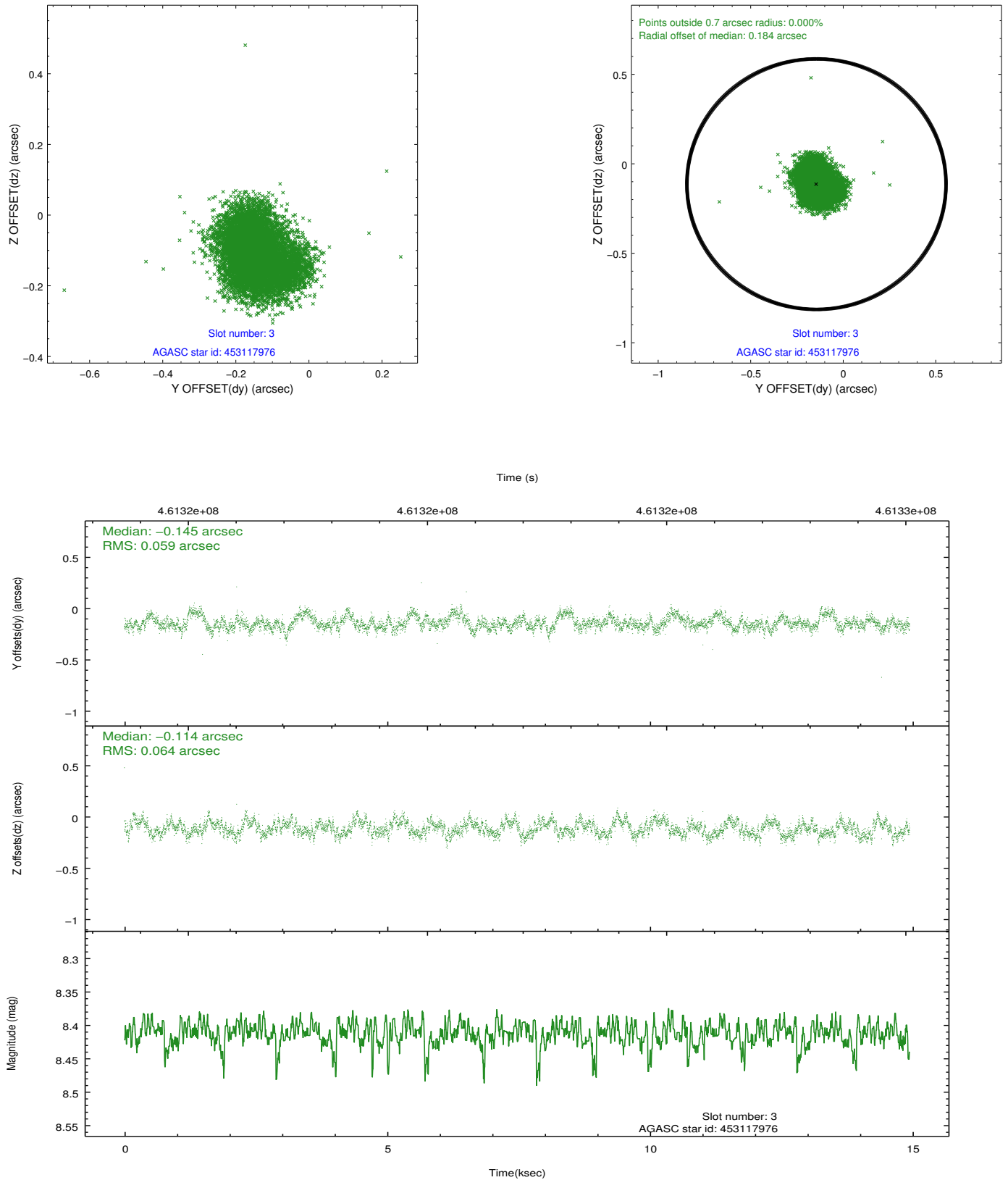


Slot Statistics

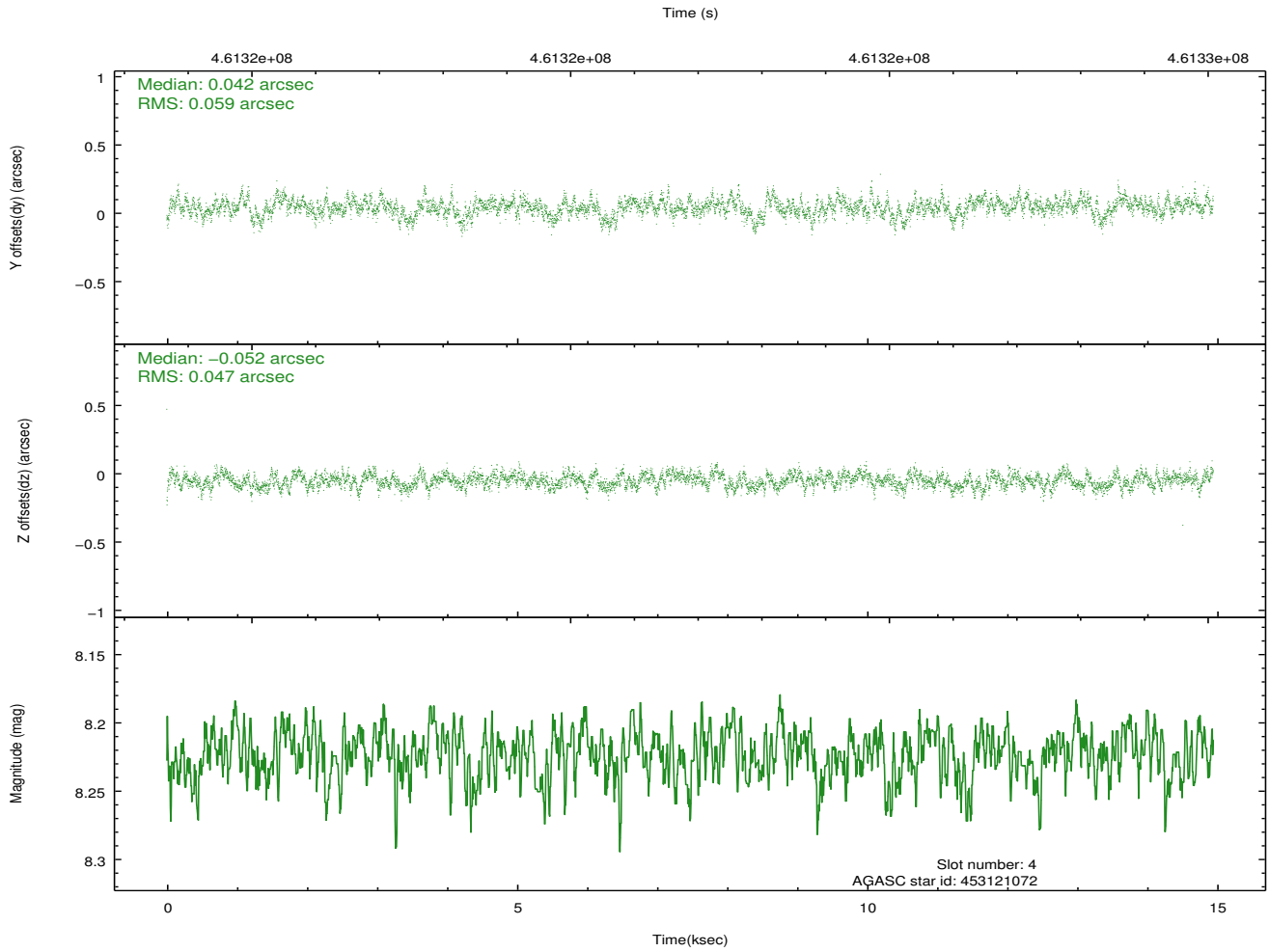
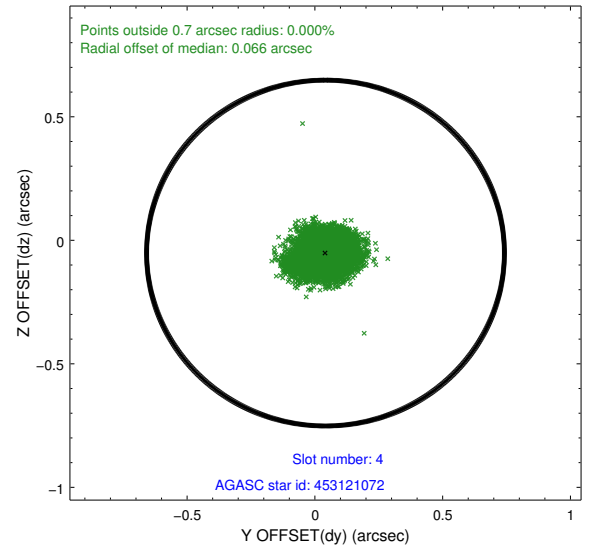
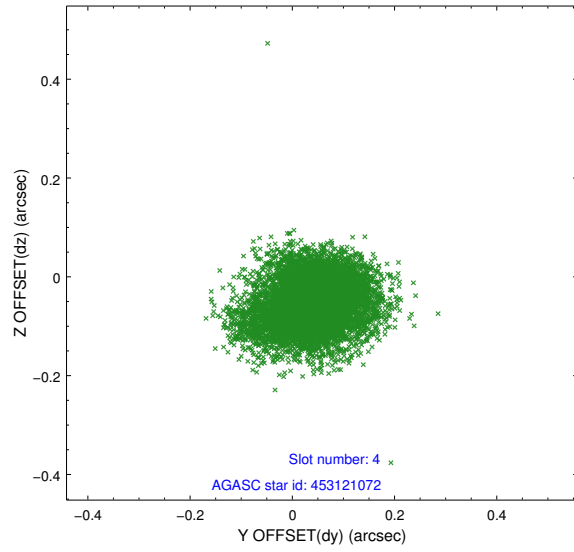
slot	status	id	mag	n_pts	med_dy	med_dz	dr1	dr2	ra	dec	mean_y	mean_z
0	FID	ACIS-S-2	6.91	3646	-0.100	-0.063	0.008	0.013	0.000000	0.000000	-771.59	-1739.48
1	FID	ACIS-S-4	6.99	3646	0.276	0.065	0.011	0.019	0.000000	0.000000	2141.96	168.76
2	FID	ACIS-S-5	7.03	3646	-0.208	0.007	0.010	0.017	0.000000	0.000000	-1824.12	162.79
3	GUIDE	453117976	8.41	7280	-0.145	-0.114	0.094	0.145	182.086302	51.271438	-939.26	-1014.22
4	GUIDE	453121072	8.22	7290	0.042	-0.052	0.078	0.132	182.712474	50.547039	2006.18	-1399.51
5	GUIDE	453122192	8.31	7291	0.100	0.297	0.074	0.122	182.519937	51.309727	-474.17	-144.06
6	GUIDE	453124704	7.54	7292	0.017	0.056	0.064	0.102	182.712945	51.796219	-1641.37	1231.86
7	GUIDE	453124480	7.26	7289	-0.018	-0.189	0.071	0.119	183.190103	51.939962	-1444.97	2395.40

2.4 Star Slots

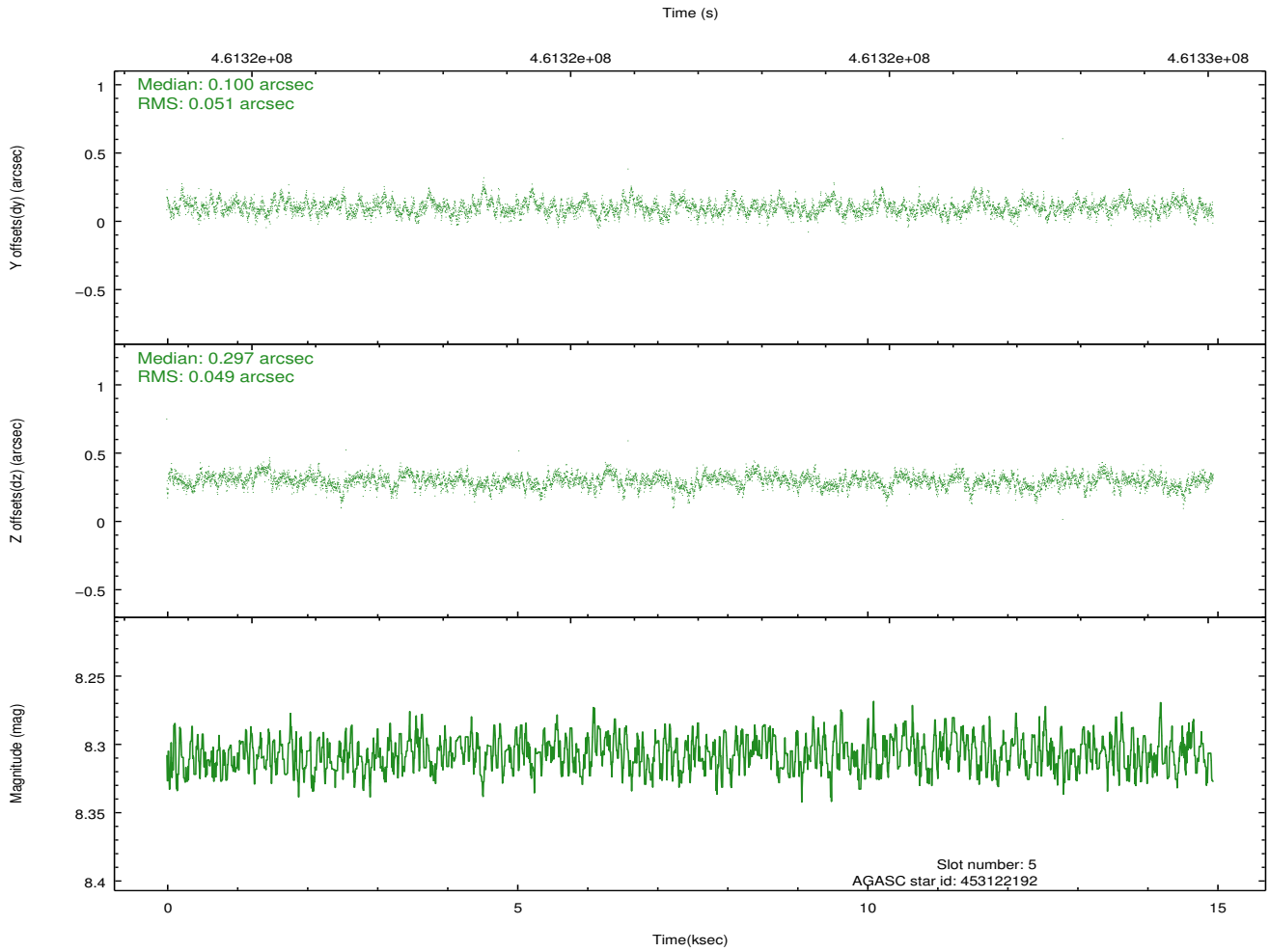
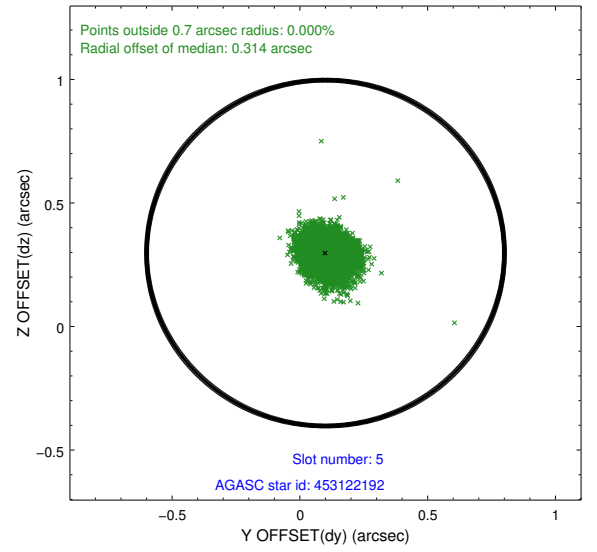
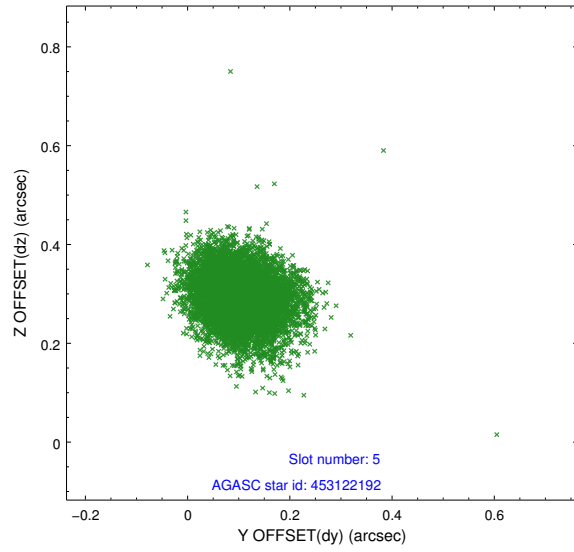
2.4.1 Slot 3



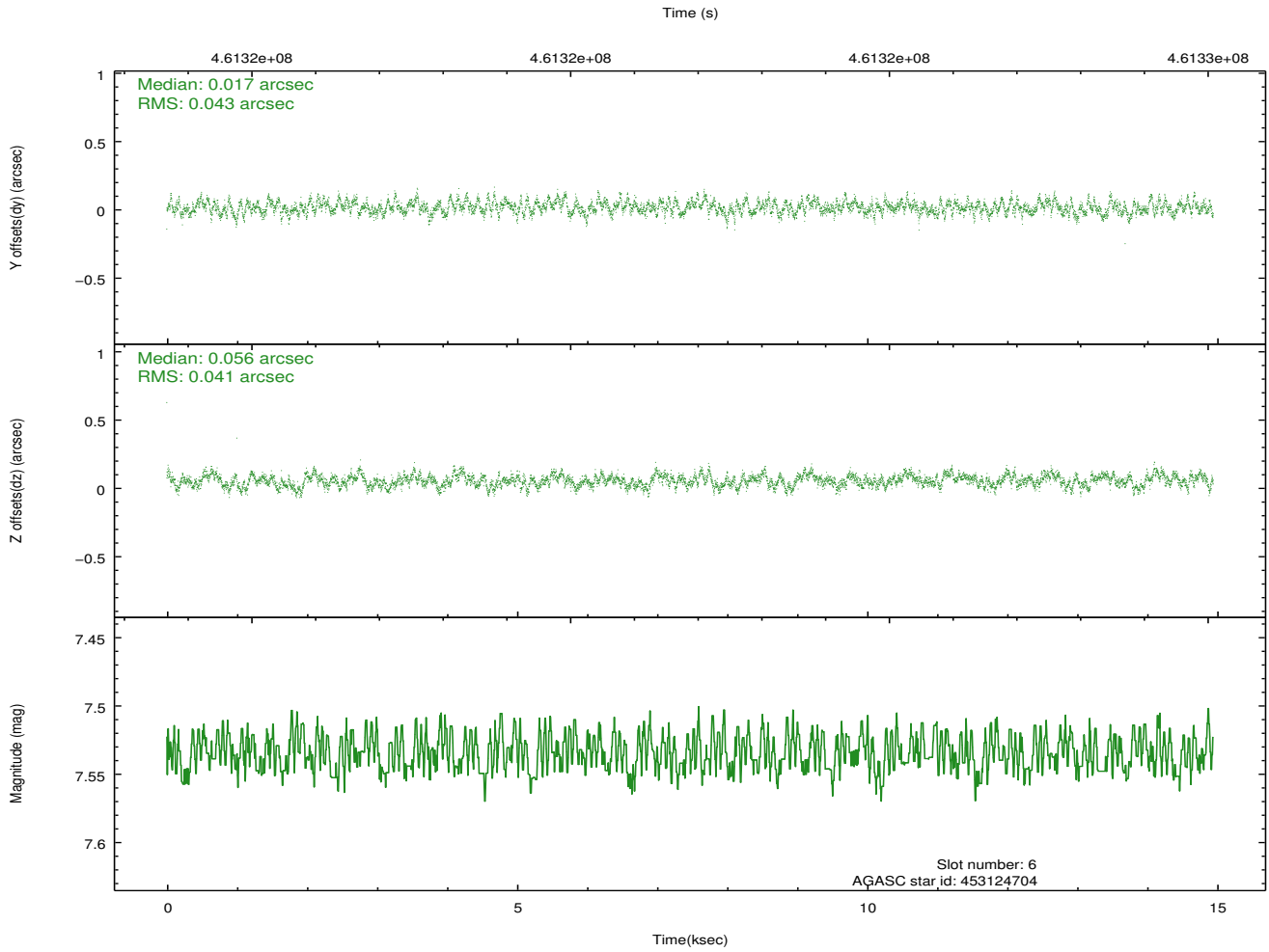
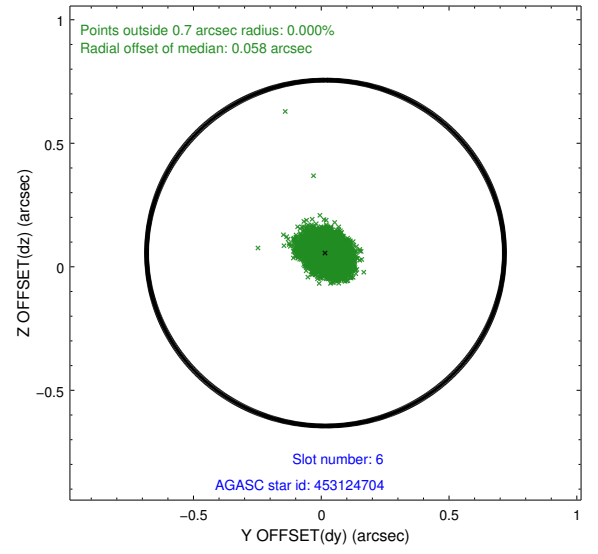
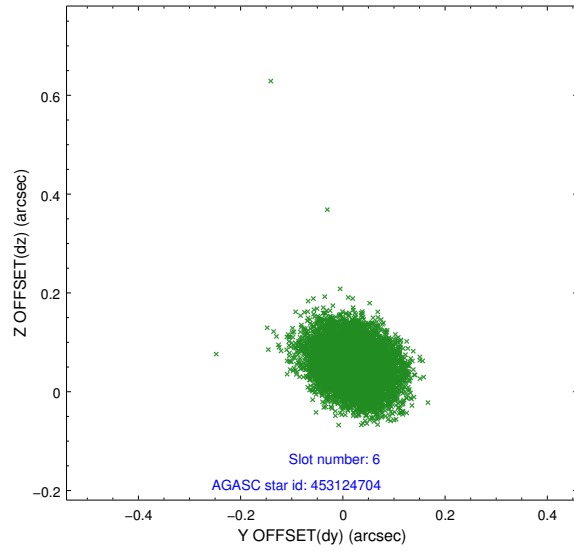
2.4.2 Slot 4



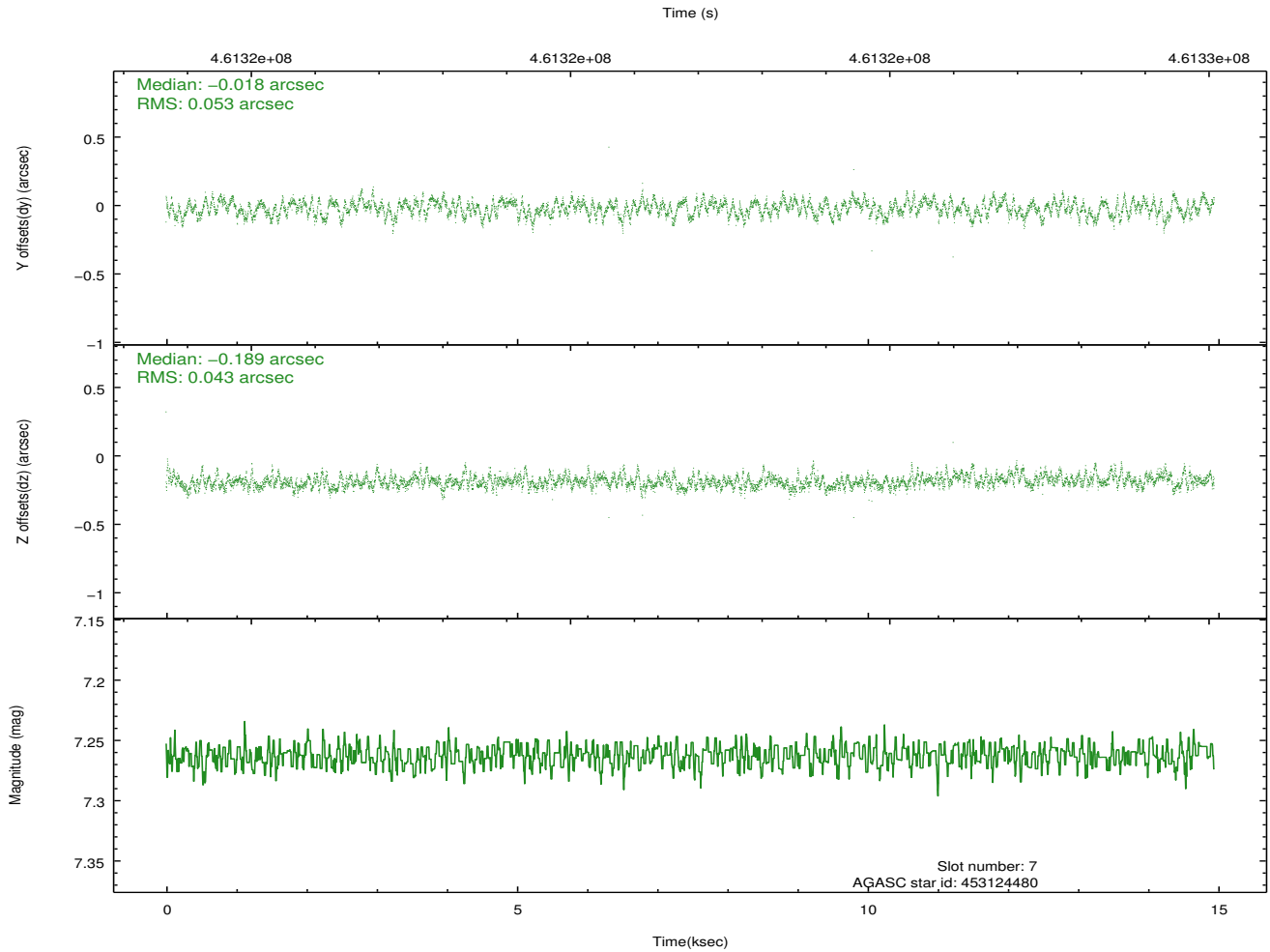
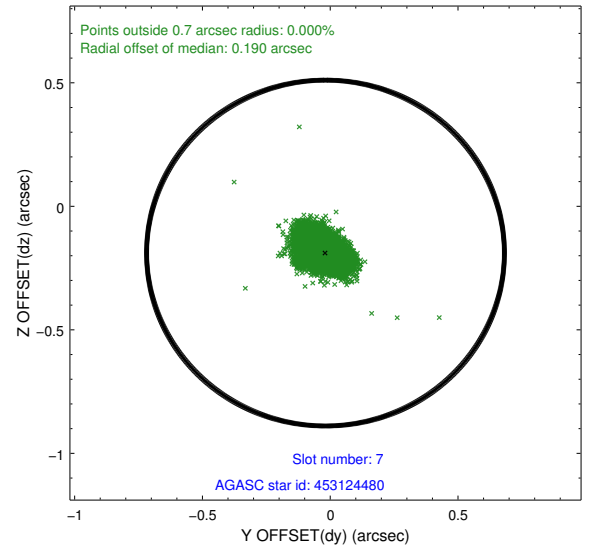
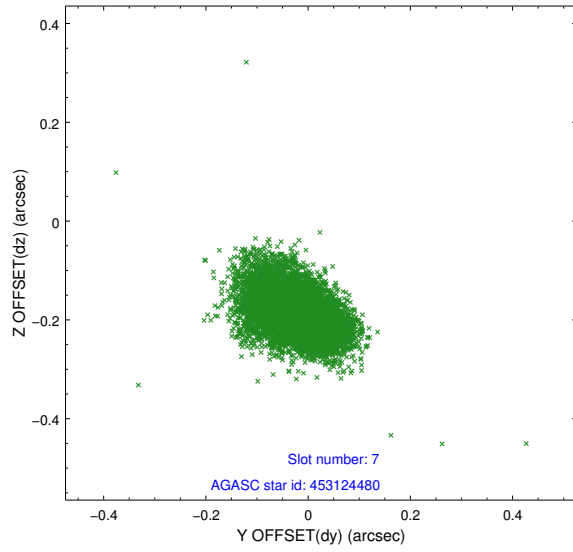
2.4.3 Slot 5



2.4.4 Slot 6

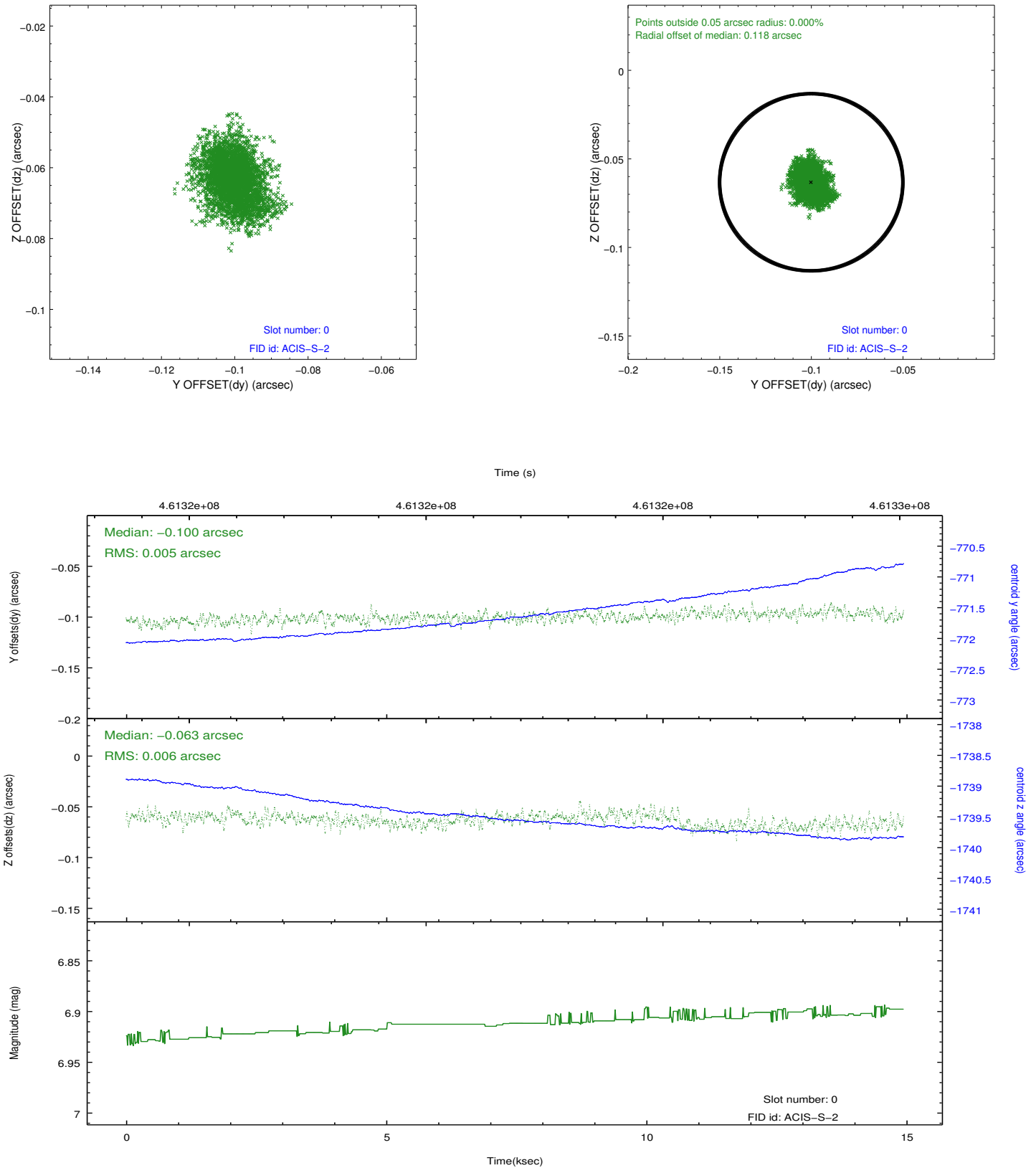


2.4.5 Slot 7

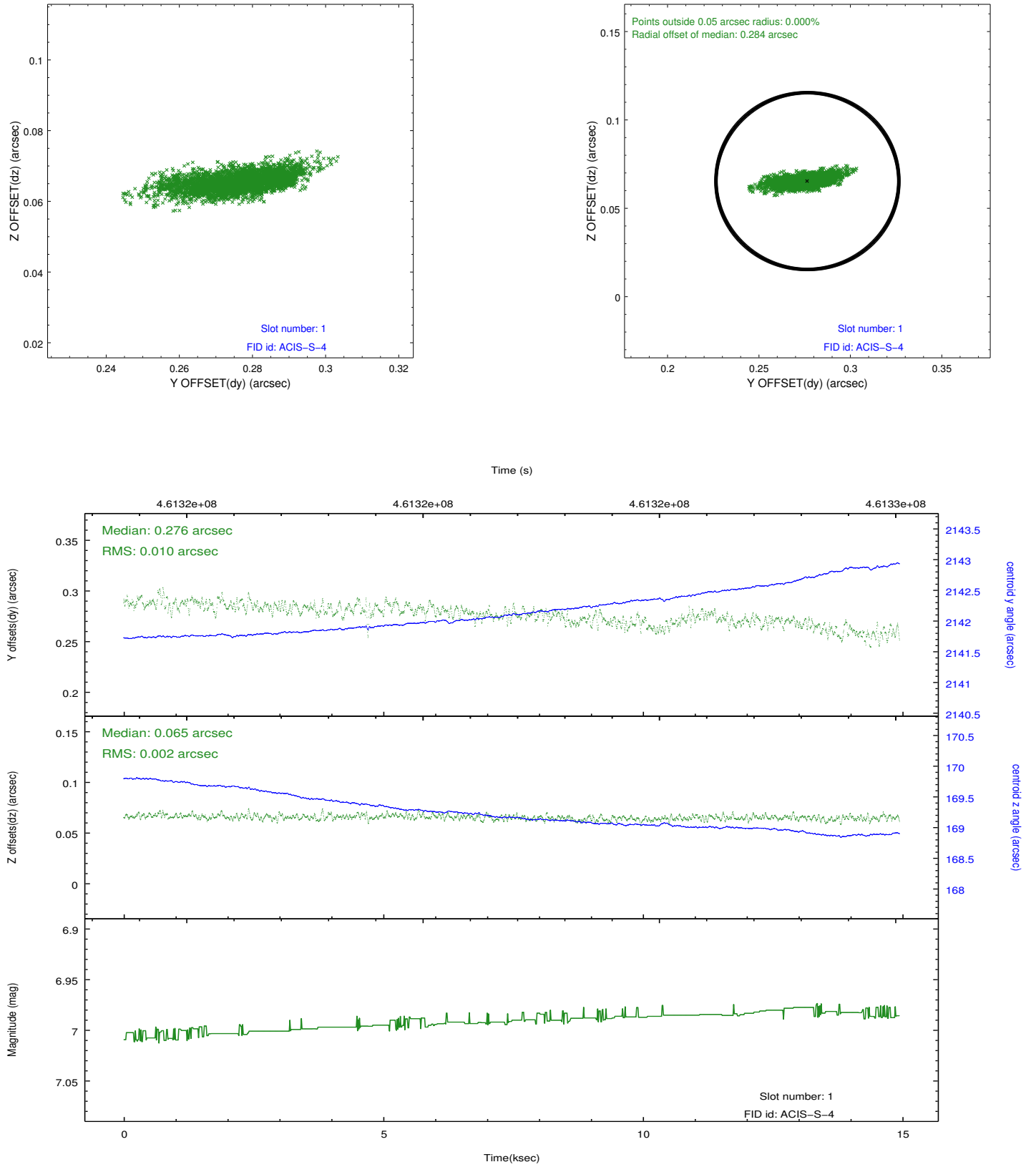


2.5 FID Slots

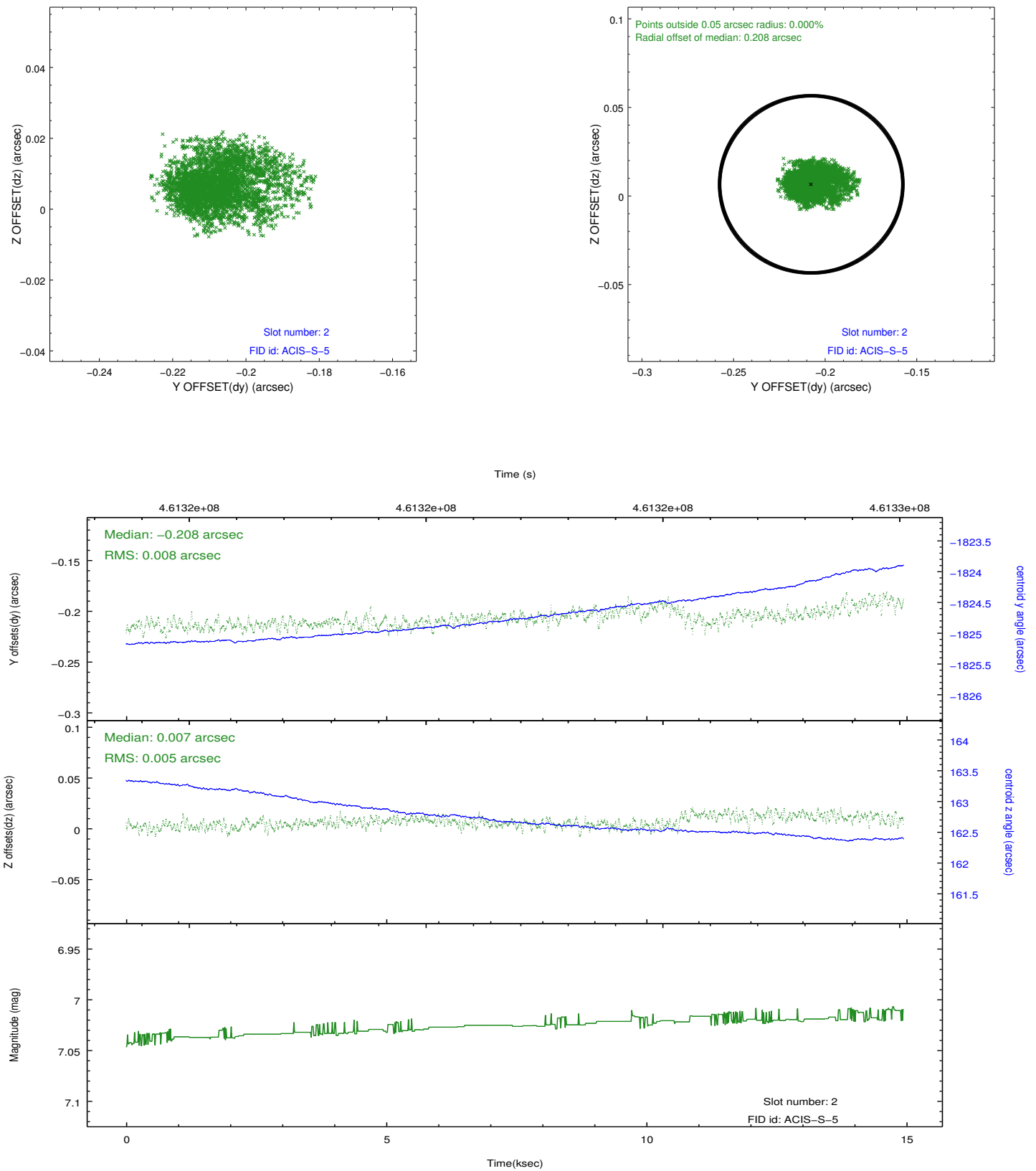
2.5.1 Slot 0



2.5.2 Slot 1



2.5.3 Slot 2



A Summary

A.1 Status

V&V Scientist	Jen Lauer
V&V Date (YYYY-MM-DD)	2012.08.15
V&V Edition	1
V&V Disposition and Status	OK
V&V Charge Time	14.269300109744

A.2 Comments