

V&V Reference Report

L2 ASCDS Version : 8.5.1.1

Observation 13919 - L2 Version 2
Chandra X-Ray Center

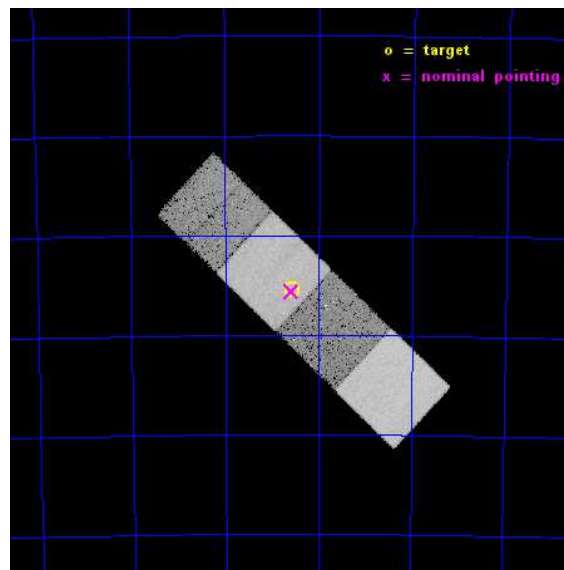
L2 Processing Date : Dec 1 2014

Contents

1	Front	2
2	OBI	3
2.1	OBI	3
2.1.1	Images	3
2.1.2	Bias	3
2.1.3	Parameters	4
2.1.4	Events	4
2.2	Compared Parameters	5
2.3	Aspect	6
2.4	Star Slots	9
2.4.1	Slot 3	9
2.4.2	Slot 4	10
2.4.3	Slot 5	11
2.4.4	Slot 6	12
2.4.5	Slot 7	13
2.5	FID Slots	14
2.5.1	Slot 0	14
2.5.2	Slot 1	15
2.5.3	Slot 2	16
A	Summary	17
A.1	Status	17
A.2	Comments	17

1 Front

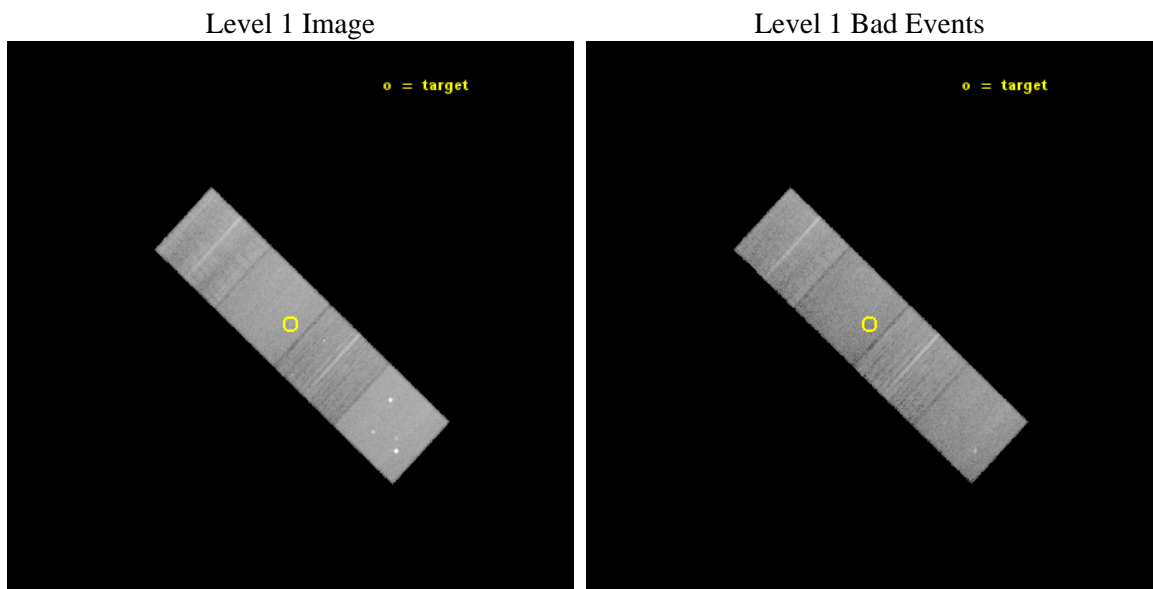
seq_num	702644	Sequence number
obs_id	13919	Observation id
title	X-ray imaging hot outflow in ULIRG IRAS F00183-7111	Proposal title
observer	Dr Kazushi Iwasawa	Principal investigator
object	IRAS F00183-7111	Source name
dtcycle	0	
cycle	P	events from which exps? Prim/Second/Both
ra_targ	5.144583	Observer's specified target RA [deg]
dec_targ	-70.924083	Observer's specified target Dec [deg]
ra_nom	5.1463593271678	Nominal RA [deg]
dec_nom	-70.927049092363	Nominal Dec [deg]
roll_nom	223.42702223255	Nominal Roll [deg]
revision	2	Processing version of data
ontime	23070.200177431	Sum of GTIs [s]
livetime	22768.771028079	Livetime [s]
ontime5	23070.200177431	Sum of GTIs [s]
ontime6	23070.200177431	Sum of GTIs [s]
ontime7	23070.200177431	Sum of GTIs [s]
ontime8	23067.059207022	Sum of GTIs [s]
l2events	199016	Number of level 2 events



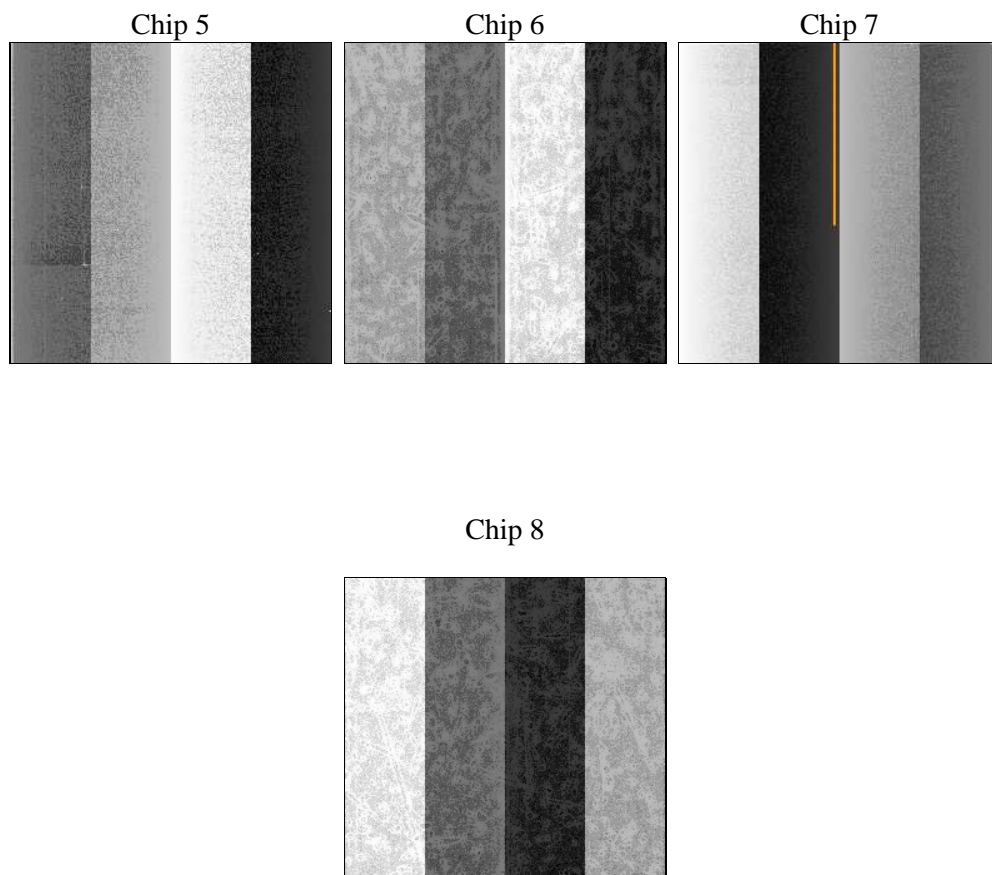
2 OBI

2.1 OBI

2.1.1 Images



2.1.2 Bias



2.1.3 Parameters

obi_num	0	Obi number	sched_exp_time	23000.000000	[s] Scheduled observation exposure time
ascdsver	10.3	Processing system revision	ontime	23070.200177431	Sum of GTIs [s]
caldsver	4.6.4	 	ontime5	23070.200177431	Sum of GTIs [s]
date	2014-12-01T16:30:19	Date and time of file creation	ontime6	23070.200177431	Sum of GTIs [s]
revision	2	Processing version of data	ontime7	23070.200177431	Sum of GTIs [s]
			ontime8	23067.059207022	Sum of GTIs [s]
			l1events	684587	Number of level 1 events

2.1.4 Events

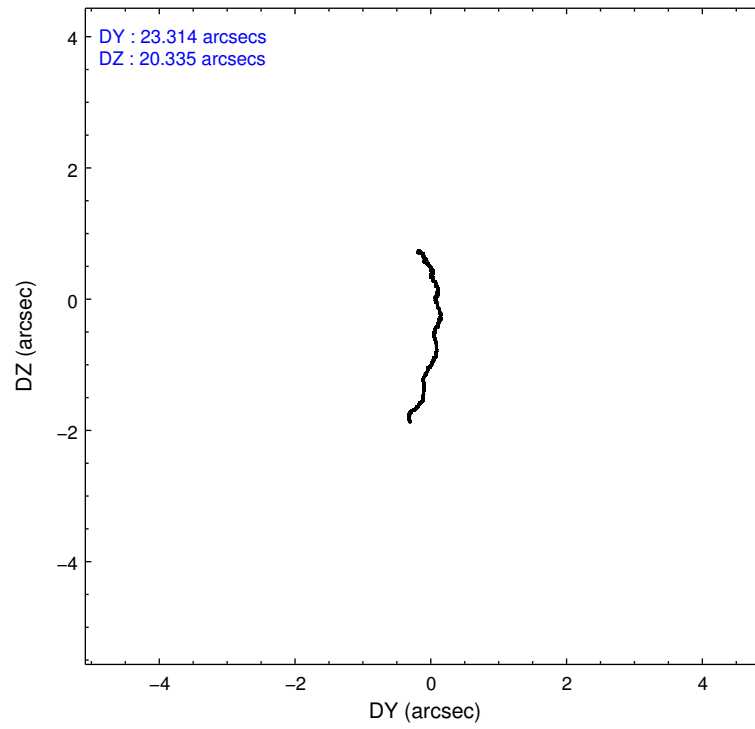
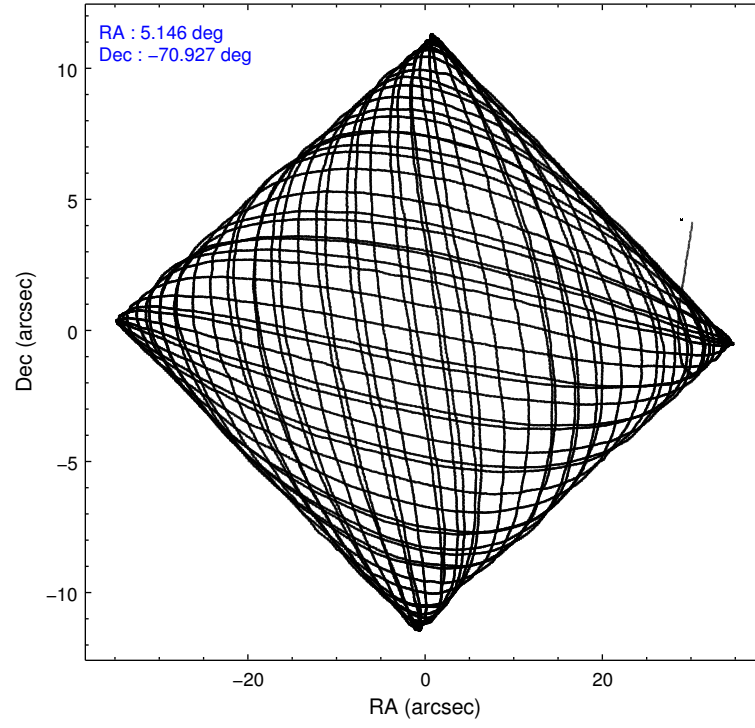
	ccd 5	ccd 6	ccd 7	ccd 8
level 1 events	216535	128100	169930	170022
rejected events	106536	112326	94900	124505
rejected %	49%	87%	55%	73%

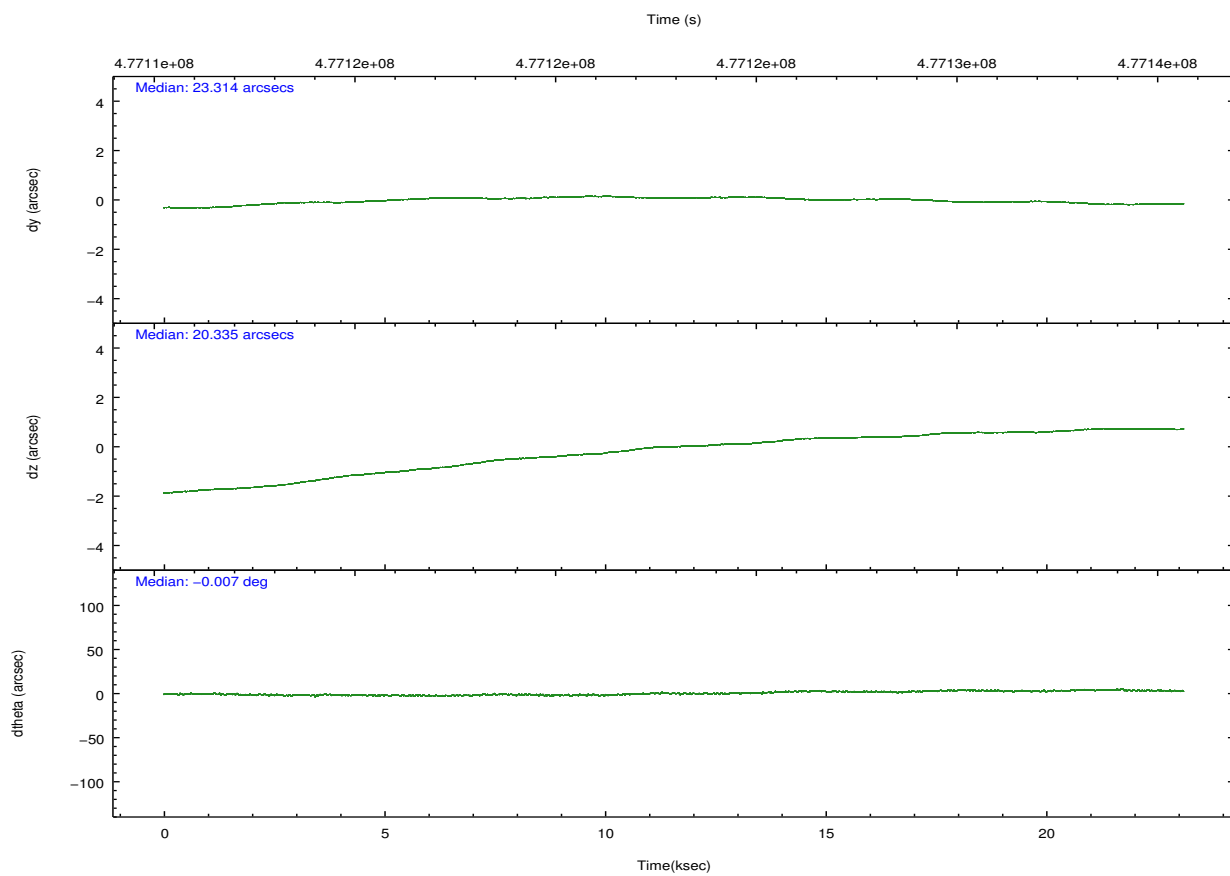
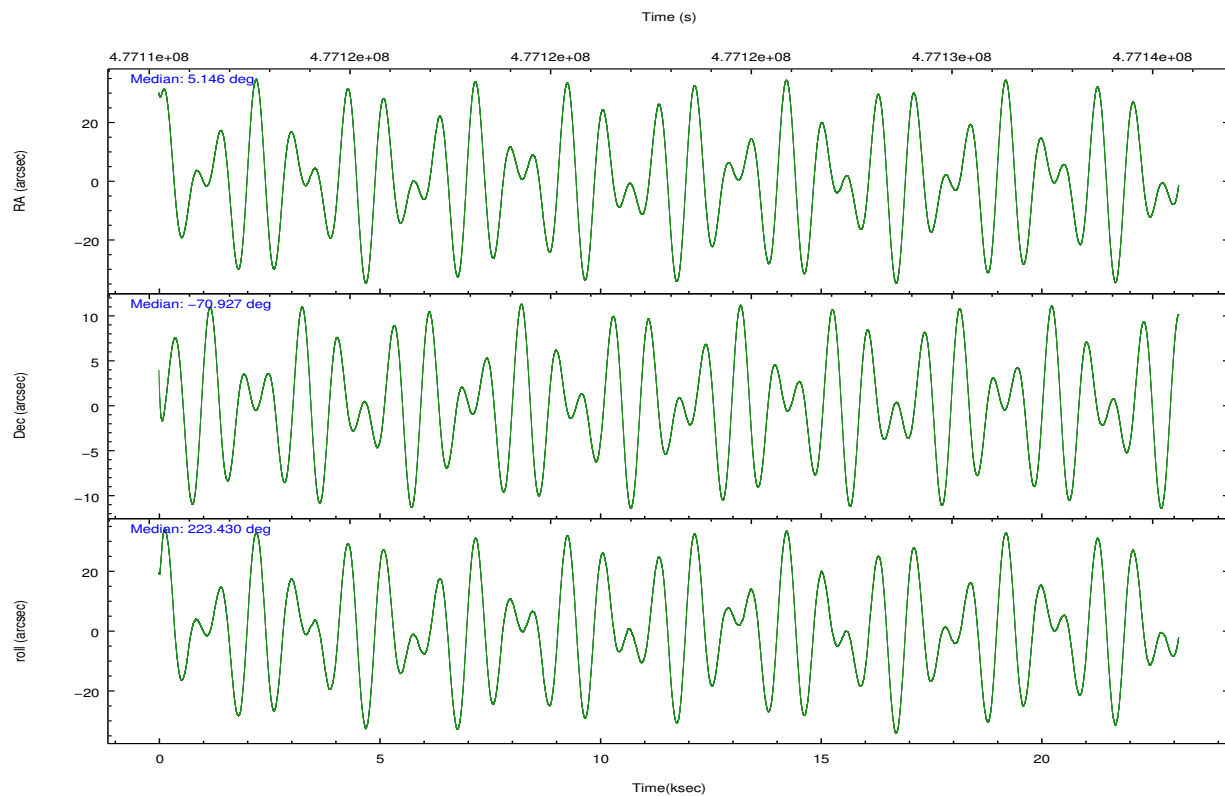
	ccd 5	ccd 6	ccd 7	ccd 8
grade 0 events	13932	5590	6921	13544
	6%	4%	4%	7%
grade 1 events	597	64	202	137
	0%	0%	0%	0%
grade 2 events	34652	3549	15152	10736
	16%	2%	8%	6%
grade 3 events	3697	1555	6505	4612
	1%	1%	3%	2%
grade 4 events	3633	1583	6441	4365
	1%	1%	3%	2%
grade 5 events	15658	6422	17625	9394
	7%	5%	10%	5%
grade 6 events	54110	3499	40022	12266
	24%	2%	23%	7%
grade 7 events	90256	105838	77062	114968
	41%	82%	45%	67%

2.2 Compared Parameters

Parameter	Planned	Actual	Parameter	Planned	Actual
Instrument	ACIS	ACIS	Obspar format version number	7	7
Detector	ACIS-5678	ACIS-5678	Obspar file type	PREDICTED	ACTUAL
Grating	NONE	NONE	Obspar update status	NONE	UPDATED
Data mode	VFAINT	VFAINT	Number of optional ACIS chips dropped	0	0
Observation mode	POINTING	POINTING	On-chip summing requested	N	N
[deg] Pointing RA	5.169078	5.146359327167829	Subarray requested	NONE	NONE
[deg] Pointing Dec	-70.900736	-70.9270490923634	Alternating exposures requested	N	N
[deg] Pointing Roll	223.291869	223.4270222325485	[s] Primary exposure time	0.000000	3.1
[mm] SIM focus pos	-0.684267	-0.6828225247311905			
[mm] SIM defocus	0	0.001444936568705701			
[mm] SIM translation stage pos	-190.132523	-190.1400660498719			
[mm] SIM translation stage offset	0	0.00754346686406393			
[s] Observation start time (MET)	477111494.184000	477110161.12973			
Observation start date	2013-02-13T02:57:07	2013-02-13T02:36:01			
[s] Observation end time (MET)	477134494.184000	477135445.8311			
Observation end date	2013-02-13T09:20:27	2013-02-13T09:37:25			
Read mode	TIMED	TIMED			

2.3 Aspect



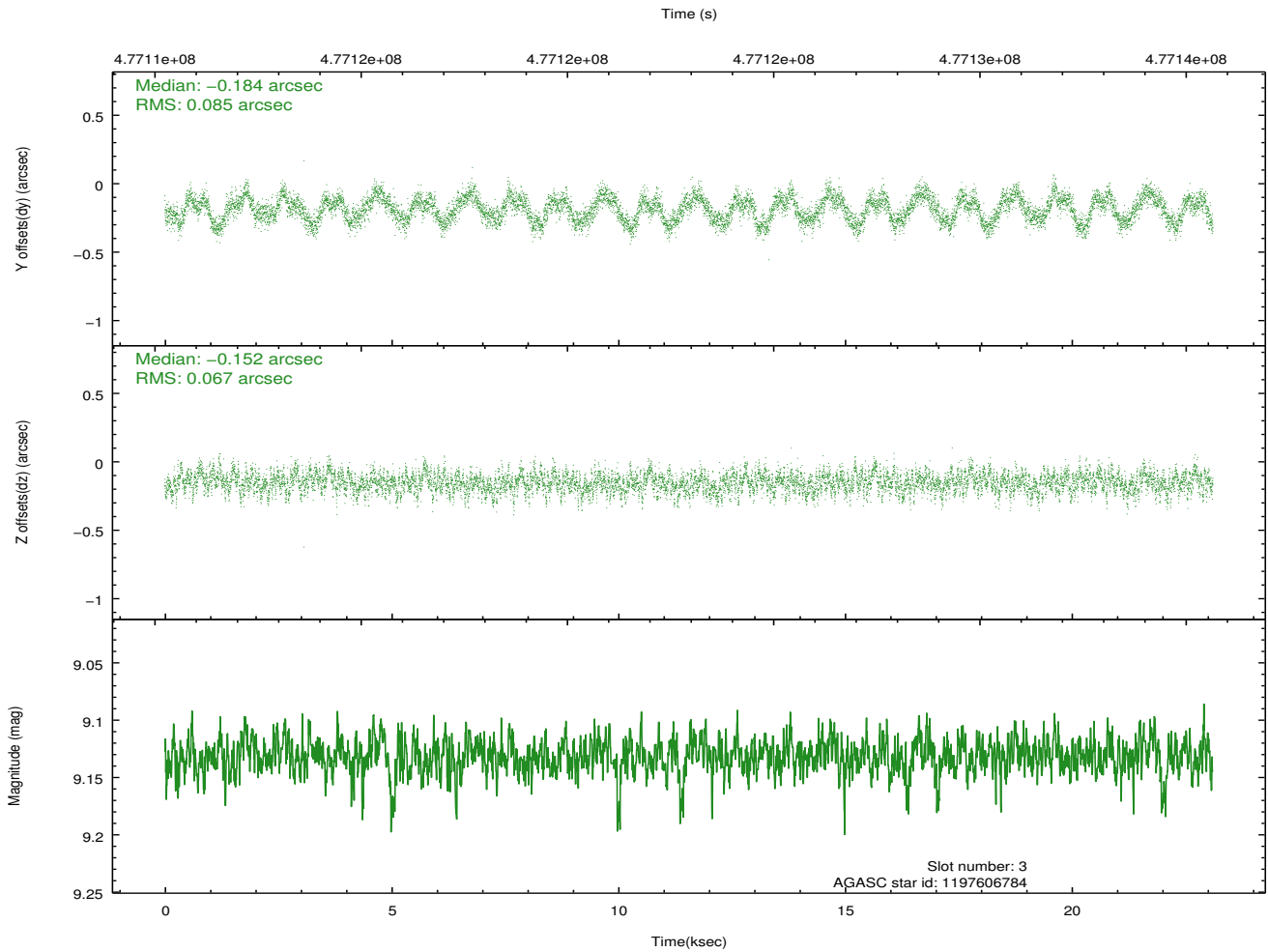
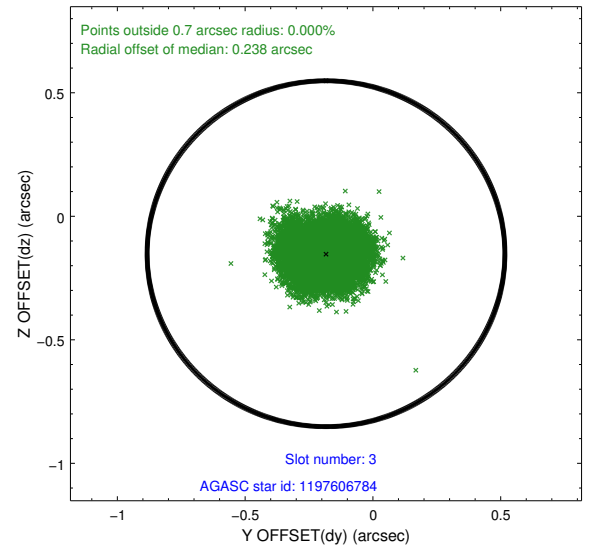
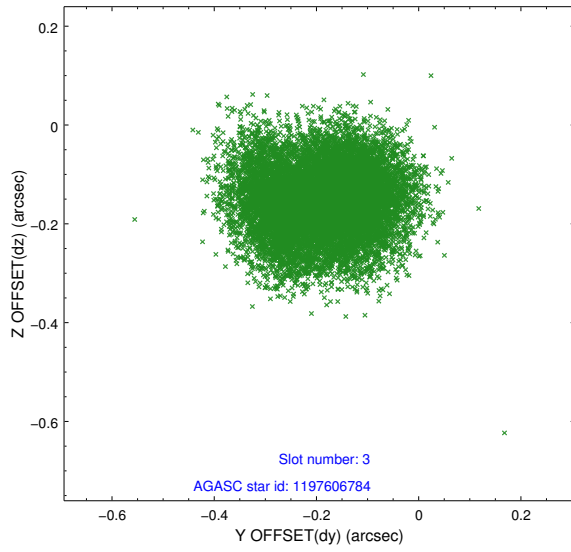


Slot Statistics

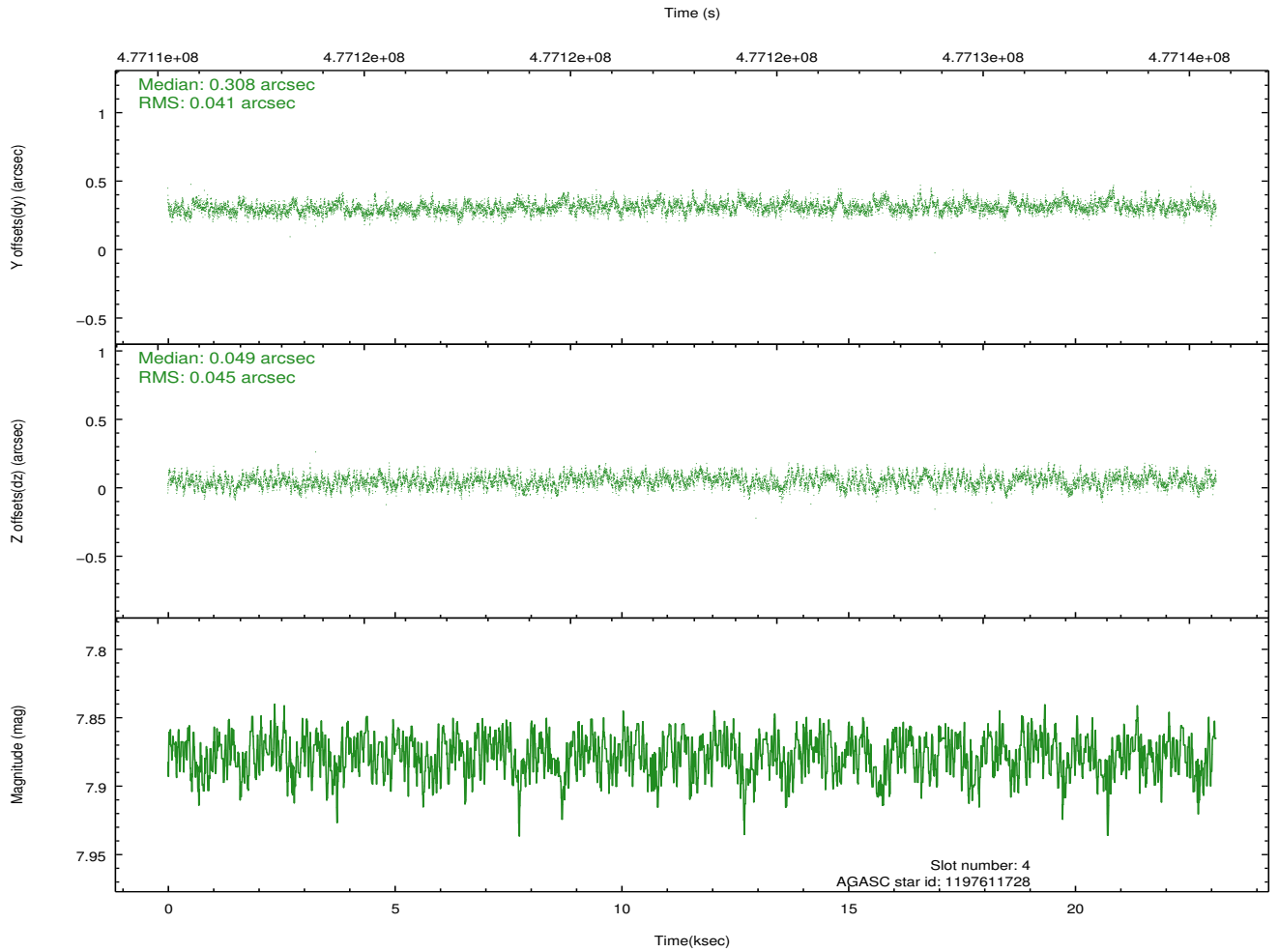
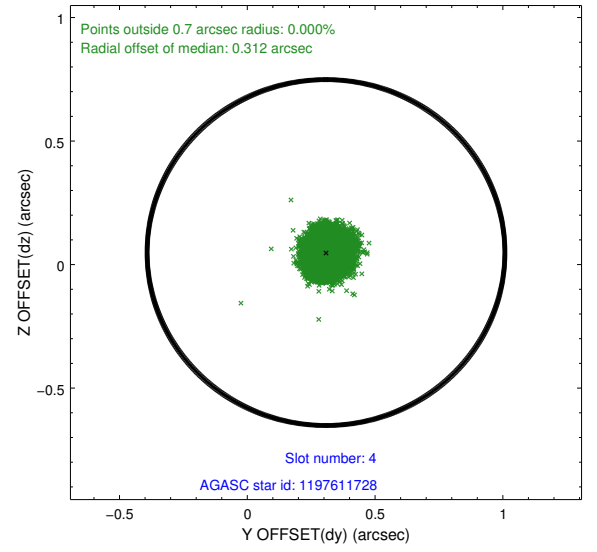
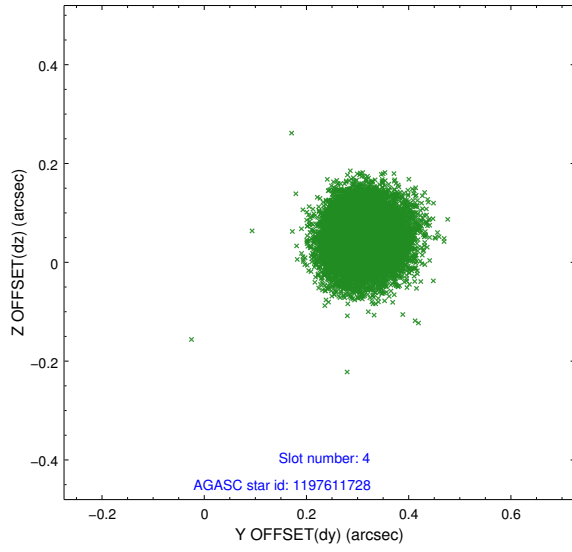
slot	status	used	id	mag	n_pts	med_dy	med_dz	dr1	dr2	ra	dec	mean_y	mean_z
0	FID		ACIS-S-1	7.03	5638	0.187	-0.067	0.025	0.035	0.000000	0.000000	919.80	-1737.27
1	FID		ACIS-S-2	6.96	5638	-0.109	0.020	0.024	0.072	0.000000	0.000000	-776.32	-1741.96
2	FID		ACIS-S-5	7.07	5637	-0.098	0.067	0.025	0.033	0.000000	0.000000	-1829.77	160.18
3	GUIDE	used	1197606784	9.13	11238	-0.184	-0.152	0.119	0.181	5.171098	-71.173604	672.09	716.77
4	GUIDE	used	1197611728	7.88	11275	0.308	0.049	0.066	0.104	4.858380	-70.661588	-319.50	-879.28
5	GUIDE	used	1197615408	8.89	11268	-0.124	0.413	0.091	0.146	6.030173	-70.443910	-1877.74	-479.41
6	GUIDE	used	1197625128	8.60	11269	-0.252	0.023	0.079	0.128	3.920586	-71.426112	2349.00	405.97
7	GUIDE	used	1197619904	8.79	11272	0.249	-0.332	0.084	0.134	6.240342	-70.695577	-1425.84	344.92

2.4 Star Slots

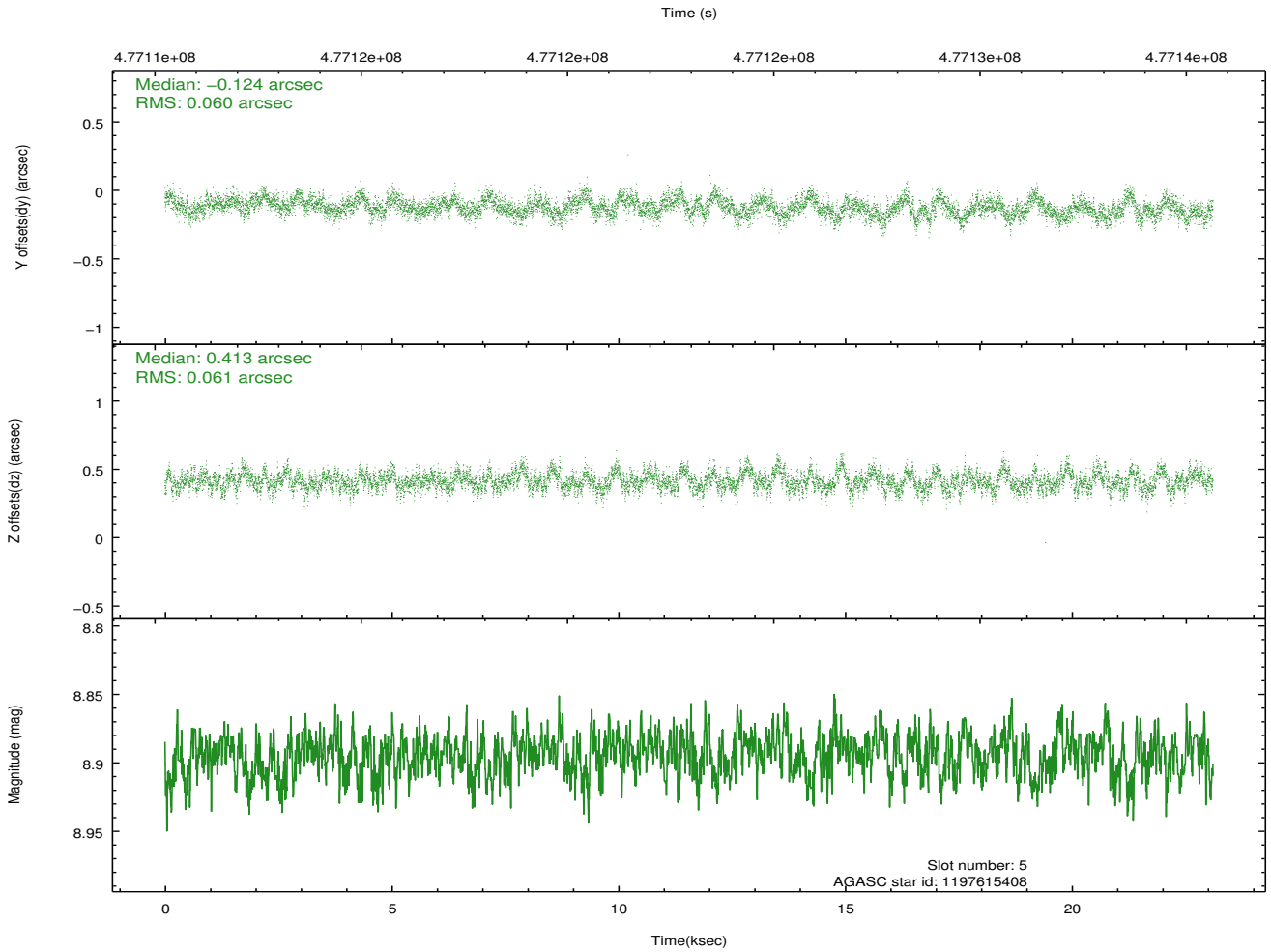
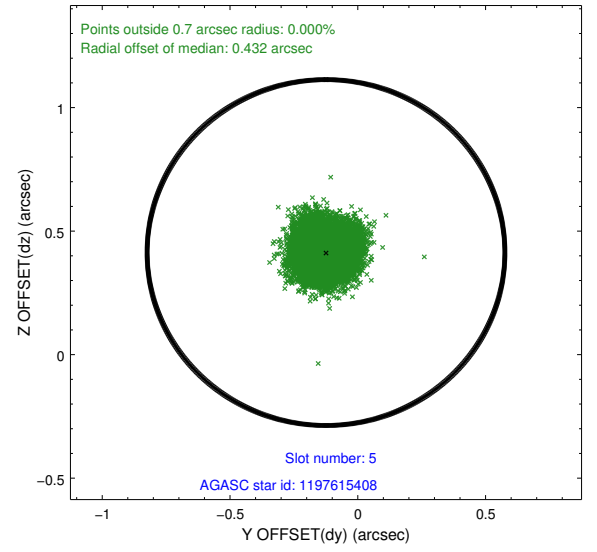
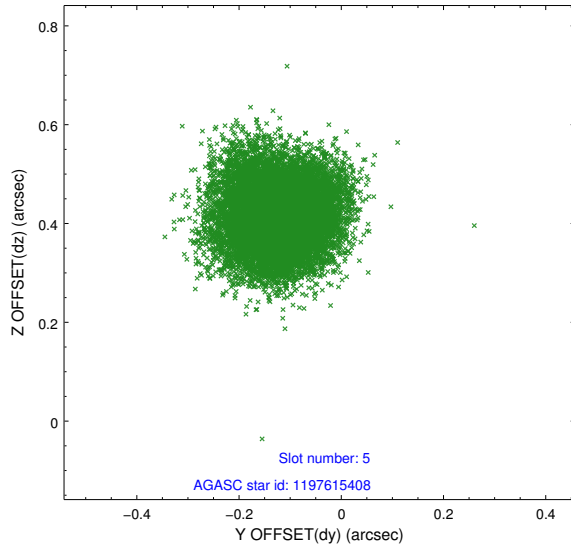
2.4.1 Slot 3



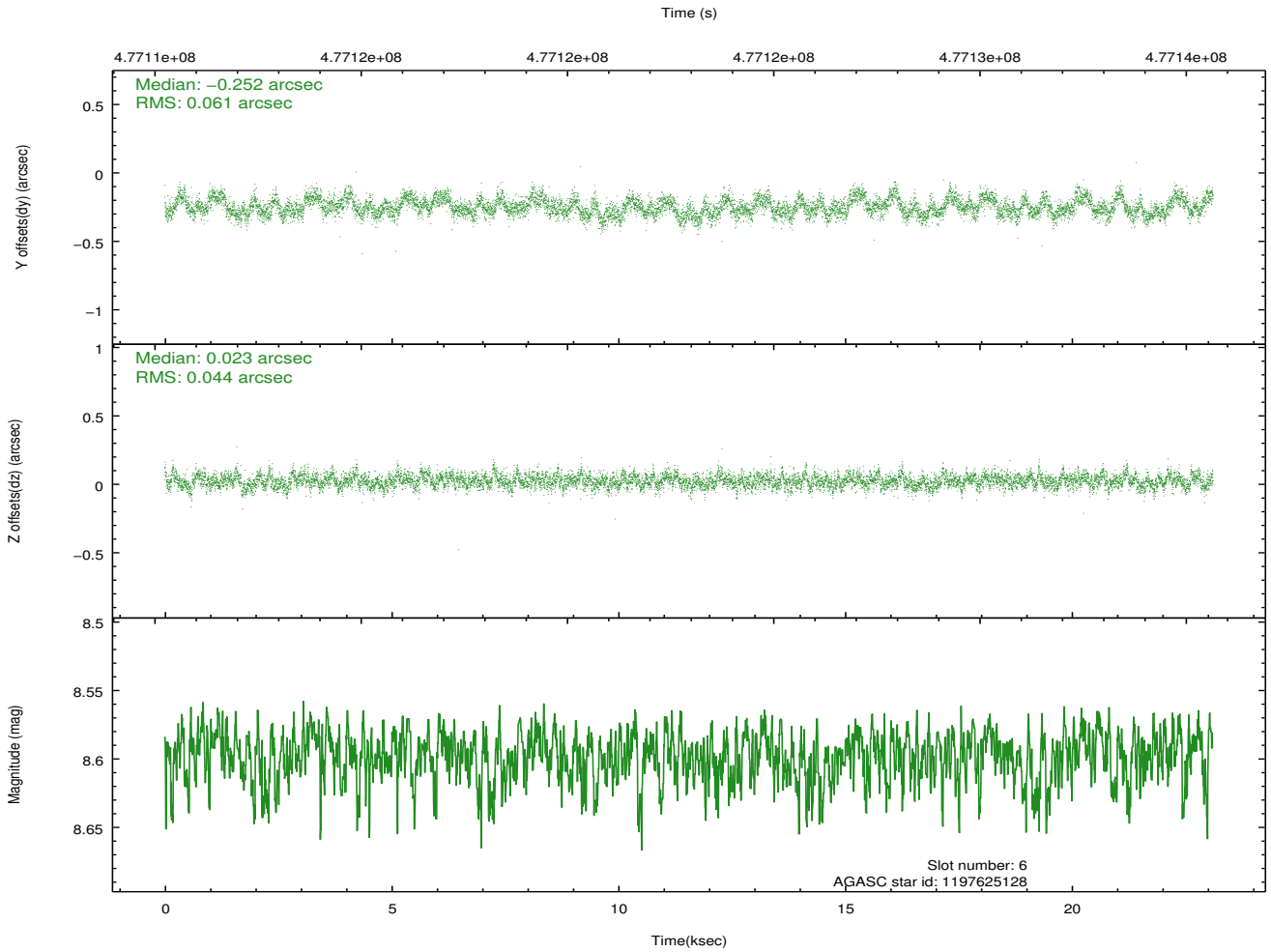
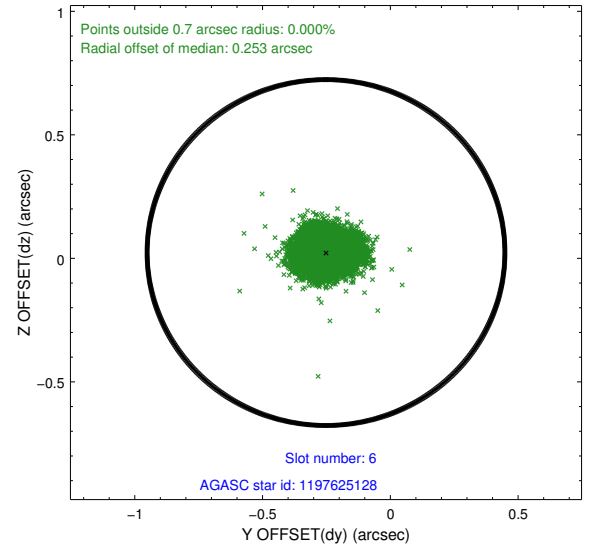
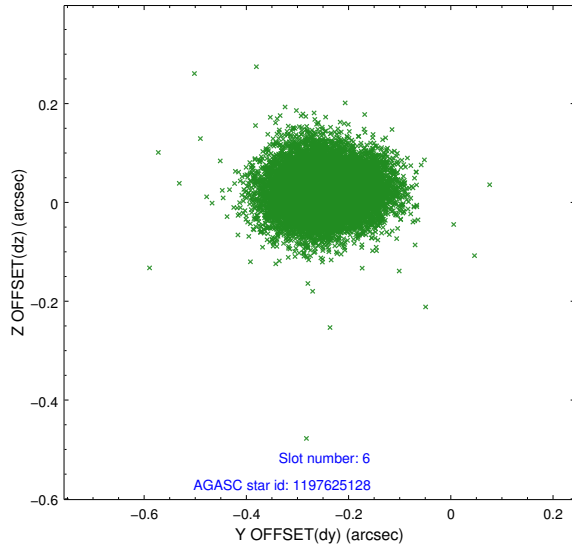
2.4.2 Slot 4



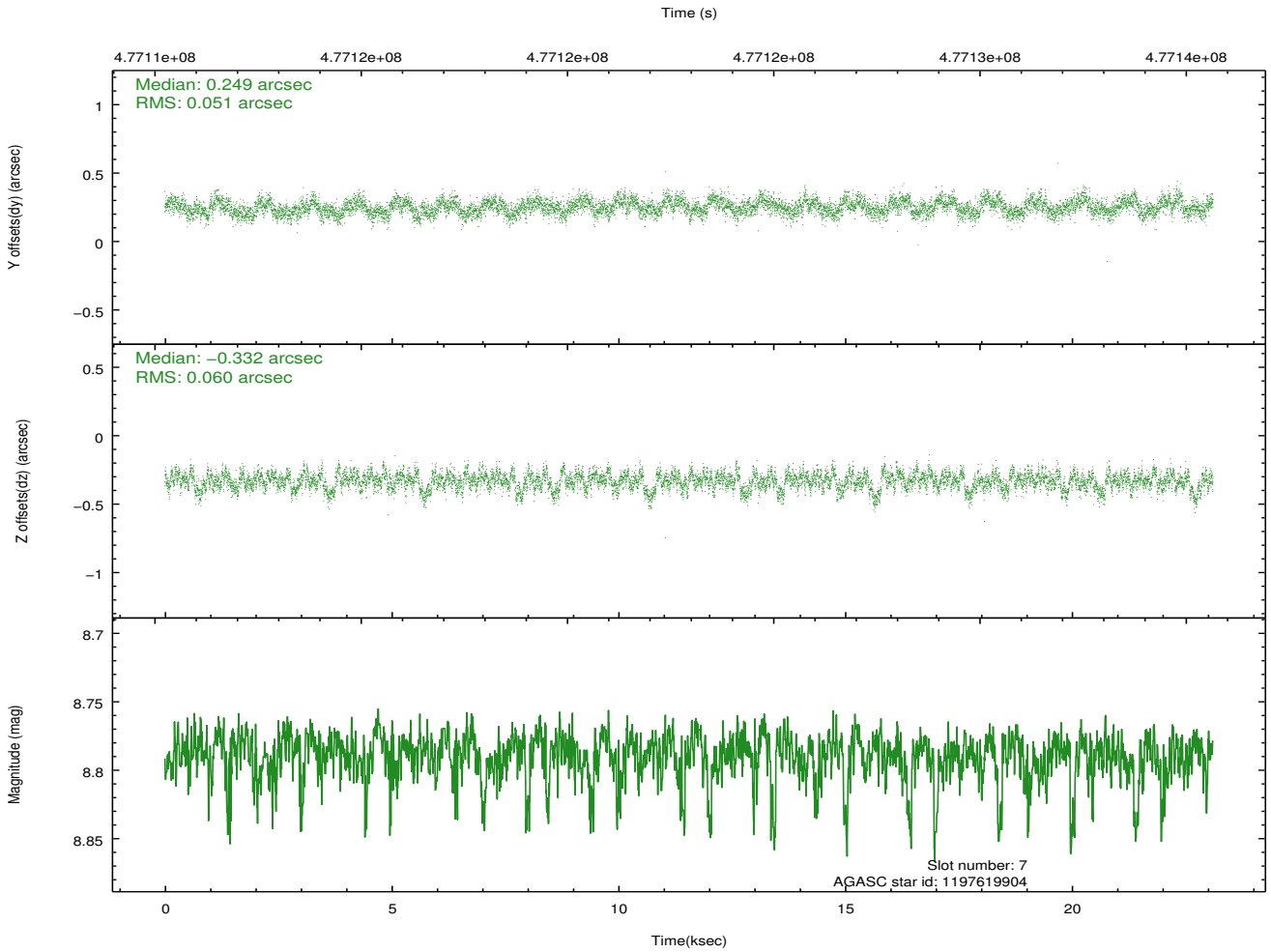
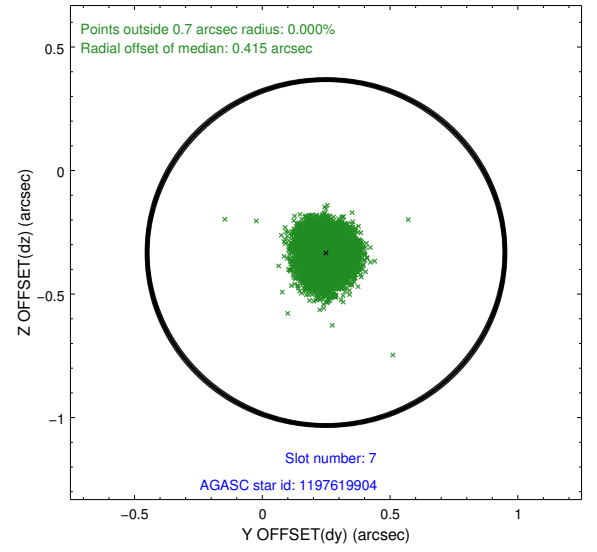
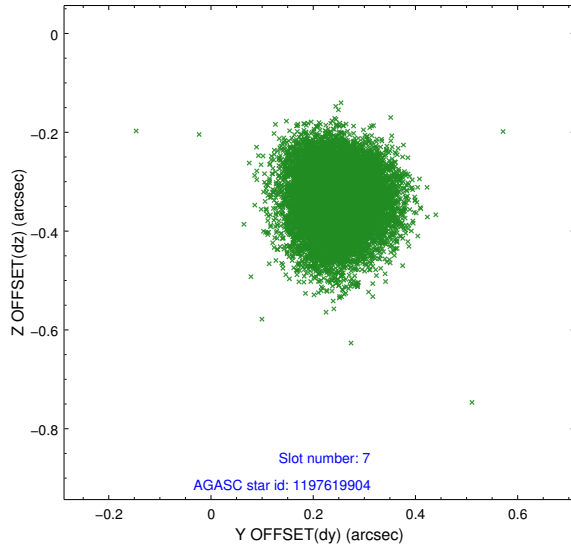
2.4.3 Slot 5



2.4.4 Slot 6

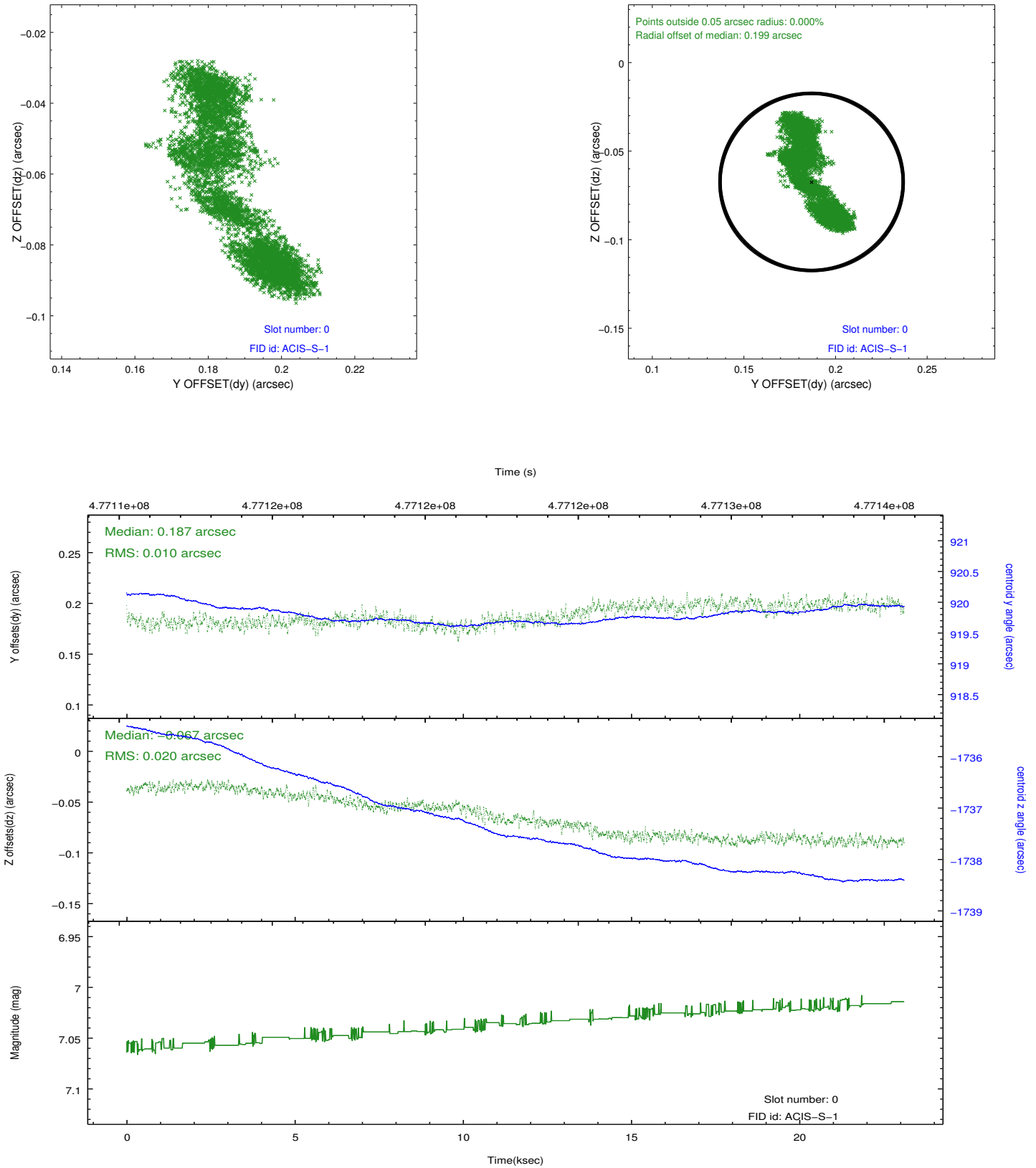


2.4.5 Slot 7

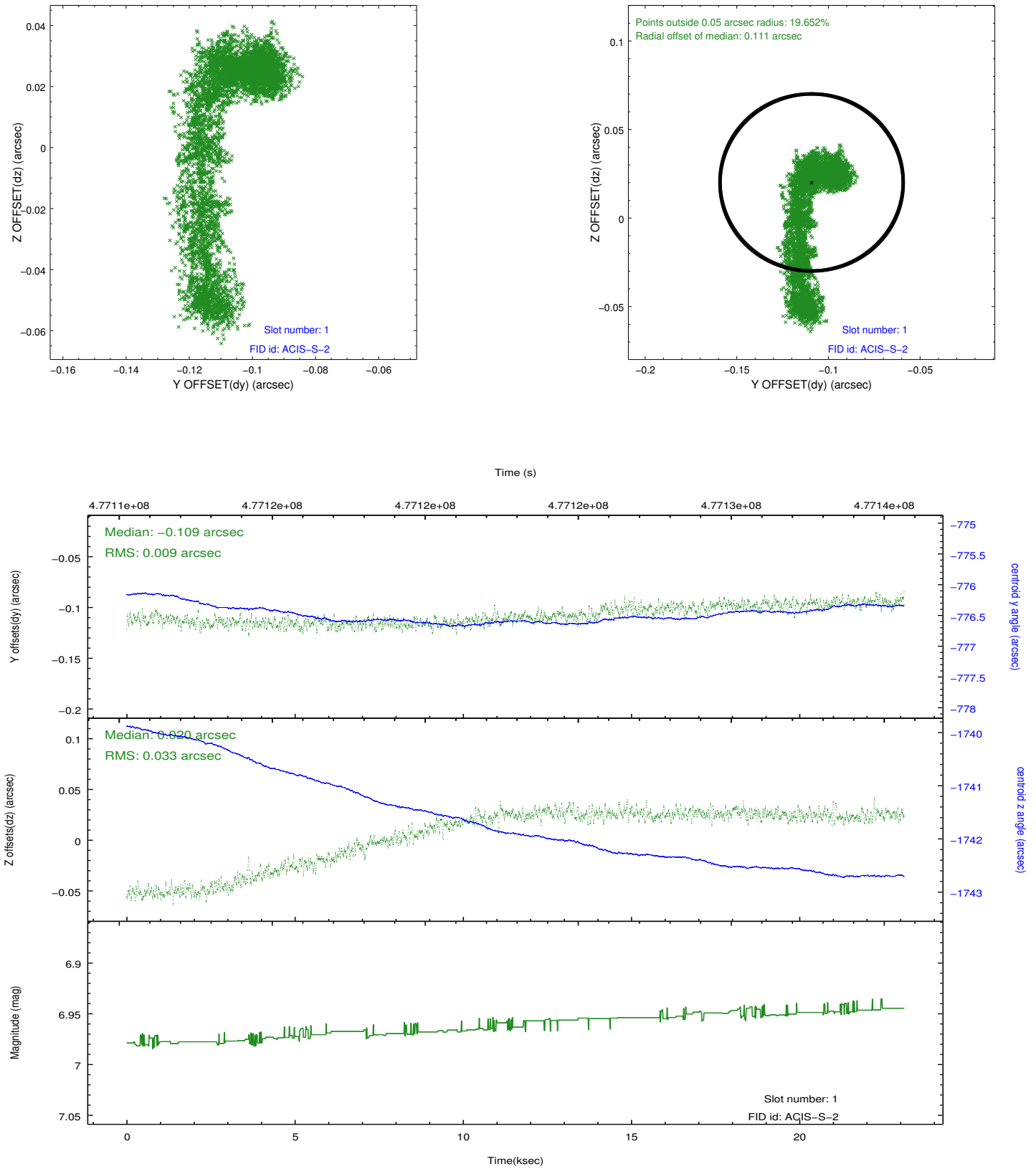


2.5 FID Slots

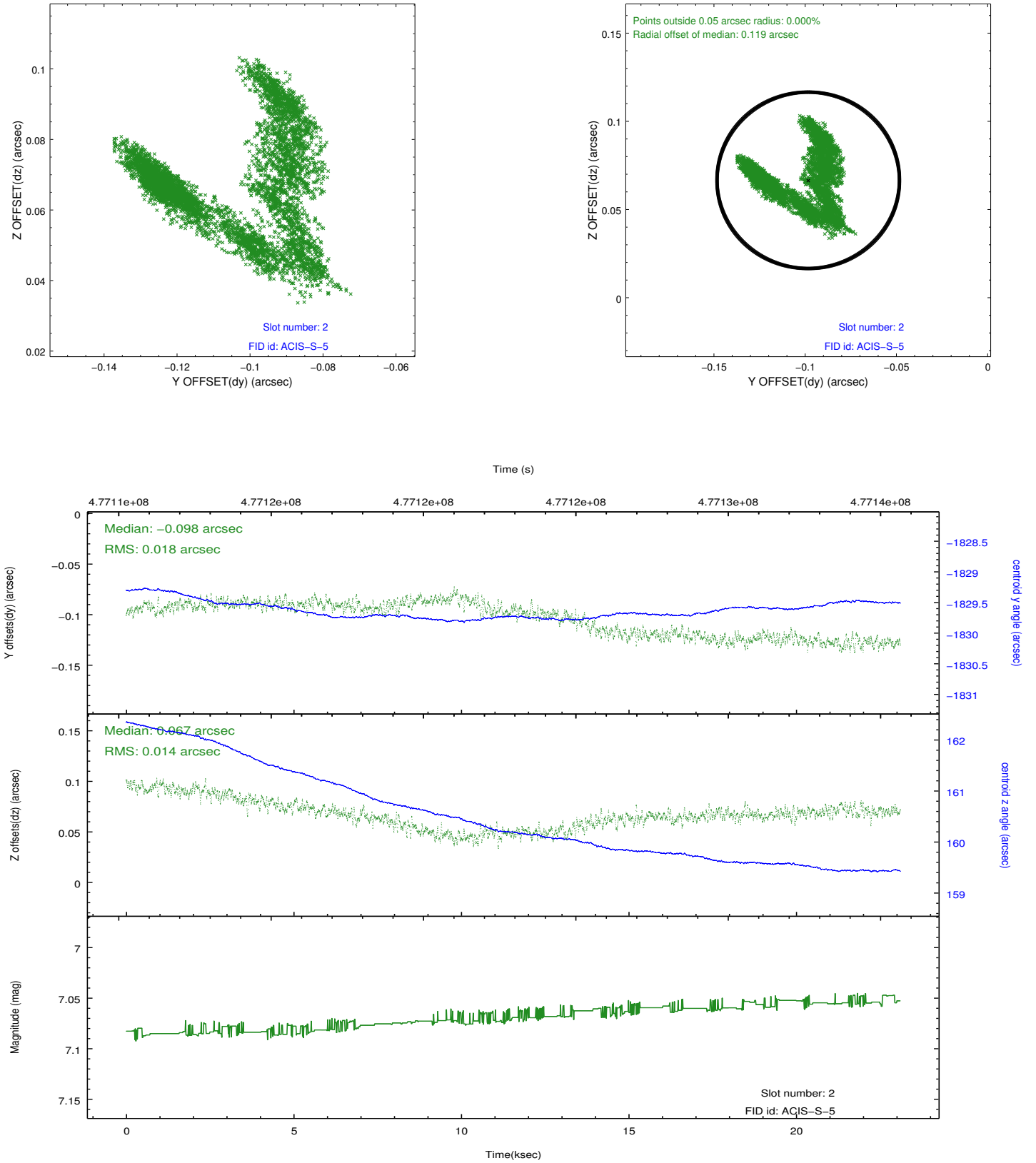
2.5.1 Slot 0



2.5.2 Slot 1



2.5.3 Slot 2



A Summary

A.1 Status

V&V Scientist	Jen Lauer
V&V Date (YYYY-MM-DD)	2014.12.09
V&V Edition	1
V&V Disposition and Status	OK
V&V Charge Time	23.070200177431

A.2 Comments

These data have been reprocessed with new aspect alignment calibration files that correct small mean offsets (up to 0.4 arcsecs) and improve overall astrometric accuracy. The new calibration was determined using data from the time period being reprocessed and was performed using cross-correlation of X-ray sources with radio and optical counterparts.