

V&V Reference Report

L2 ASCDS Version : 8.4.5

Observation 13898 - L2 Version 2
Chandra X-Ray Center

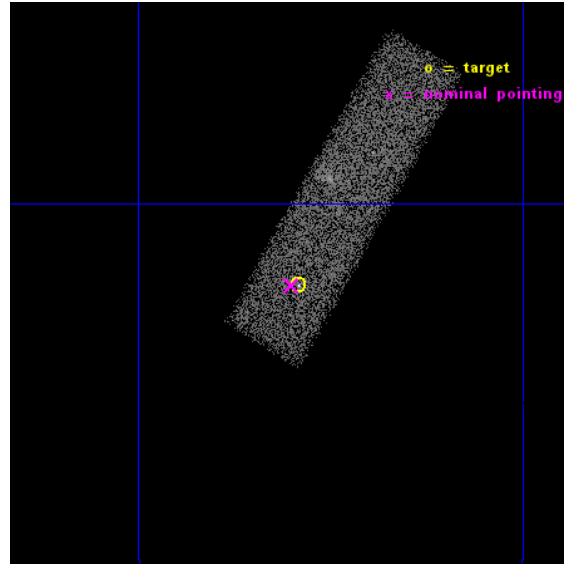
L2 Processing Date : Nov 30 2014

Contents

1	Front	2
2	OBI	3
2.1	OBI	3
2.1.1	Images	3
2.1.2	Bias	3
2.1.3	Parameters	4
2.1.4	Events	4
2.2	Compared Parameters	5
2.3	Aspect	6
2.4	Star Slots	9
2.4.1	Slot 3	9
2.4.2	Slot 4	10
2.4.3	Slot 5	11
2.4.4	Slot 6	12
2.4.5	Slot 7	13
2.5	FID Slots	14
2.5.1	Slot 0	14
2.5.2	Slot 1	15
2.5.3	Slot 2	16
A	Summary	17
A.1	Status	17
A.2	Comments	17

1 Front

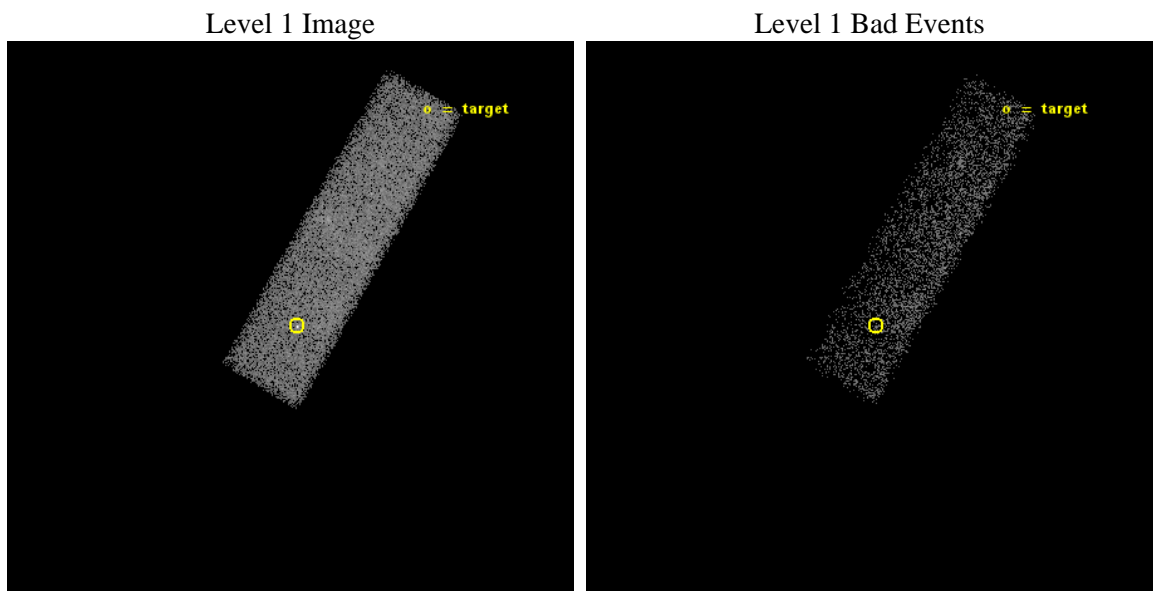
seq_num	702623	Sequence number
obs_id	13898	Observation id
title	CHANDRA SURVEY OF DUAL ACTIVATION IN HARD X-RAY SELECTED MERGING AGN HOSTS	Proposal title
observer	Dr. Richard Mushotzky	Principal investigator
object	ESO 195-IG 021 NED03	Source name
dtcycle	0	
cycle	P	events from which exps? Prim/Second/Both
ra_targ	15.145833	Observer's specified target RA [deg]
dec_targ	-47.867639	Observer's specified target Dec [deg]
ra_nom	15.150315681115	Nominal RA [deg]
dec_nom	-47.867770550564	Nominal Dec [deg]
roll_nom	300.15994364167	Nominal Roll [deg]
revision	2	Processing version of data
ontime	20775.482020199	Sum of GTIs [s]
livetime	19761.706477884	Livetime [s]
ontime7	20775.482020199	Sum of GTIs [s]
l2events	18178	Number of level 2 events



2 OBI

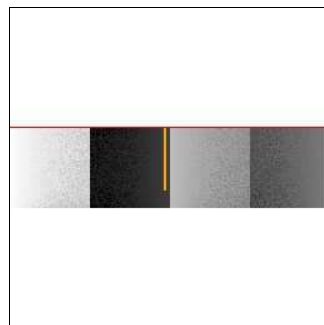
2.1 OBI

2.1.1 Images



2.1.2 Bias

Chip 7



2.1.3 Parameters

obi_num	0	Obi number	sched_exp_time	20717.791000	[s] Scheduled observation exposure time
ascdsver	10.3	Processing system revision	ontime	20775.482020199	Sum of GTIs [s]
caldsver	4.6.4	 	ontime7	20775.482020199	Sum of GTIs [s]
date	2014-11-30T05:35:37	Date and time of file creation	l1events	38159	Number of level 1 events
revision	2	Processing version of data			

2.1.4 Events

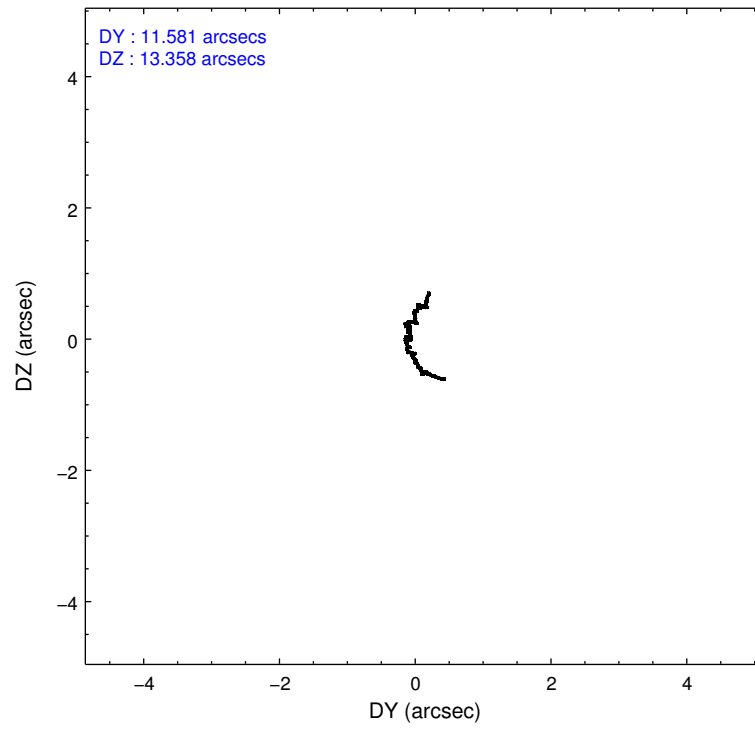
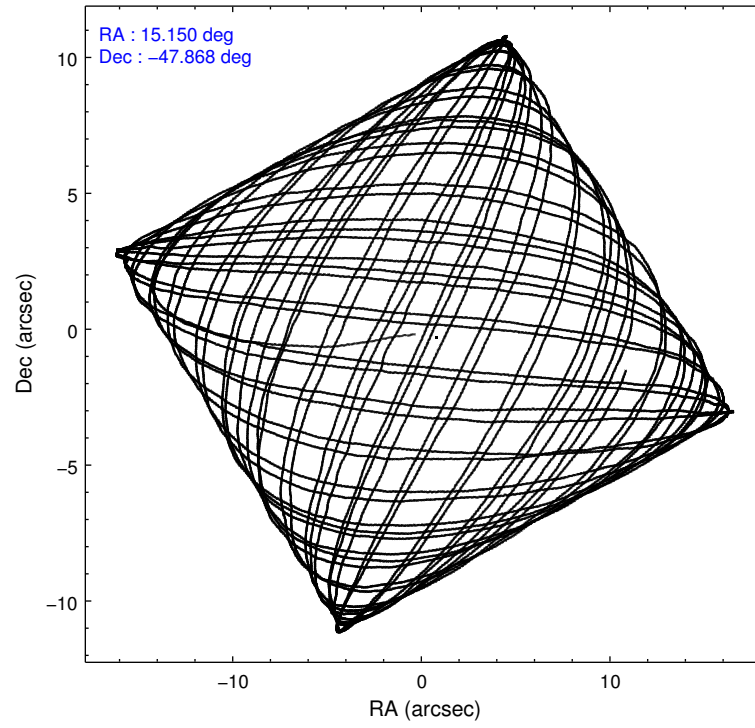
	ccd 7
level 1 events	38159
rejected events	19383
rejected %	50%

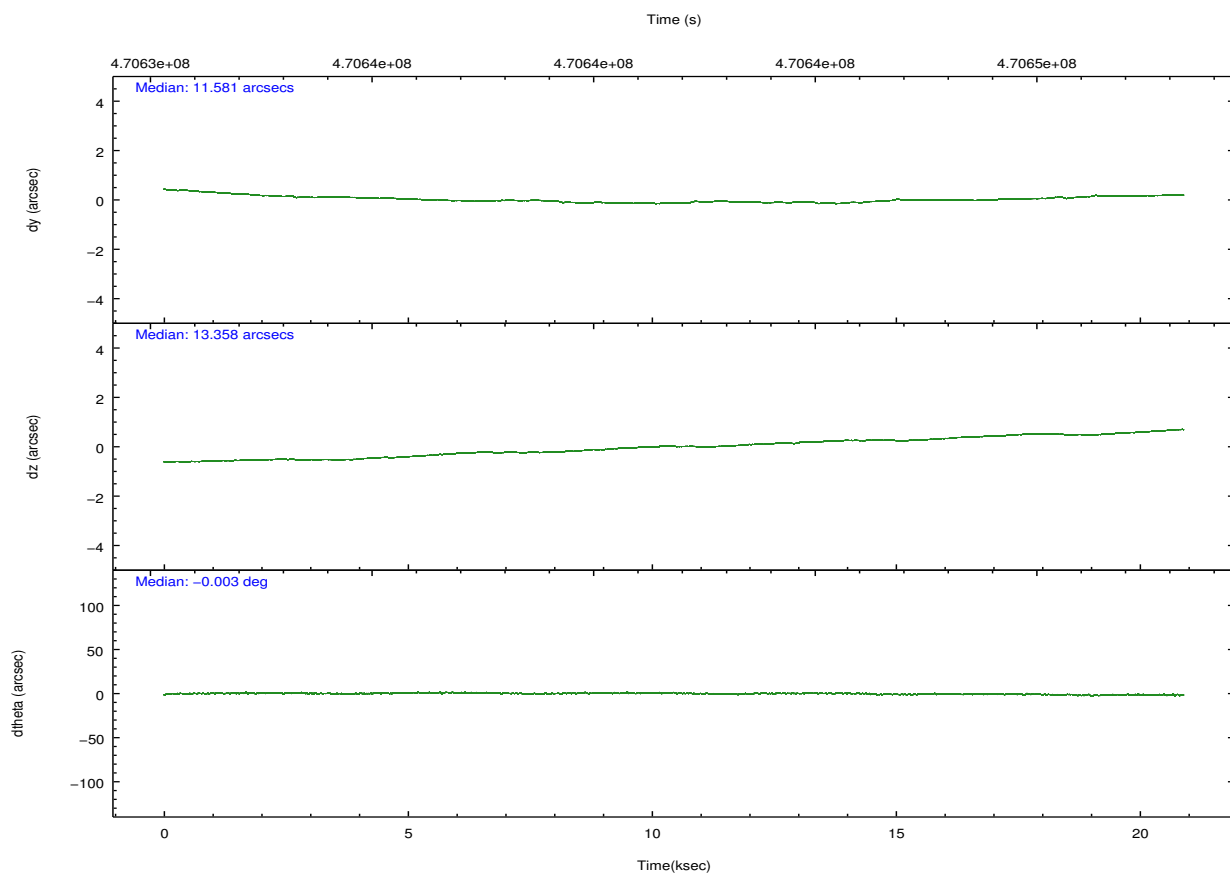
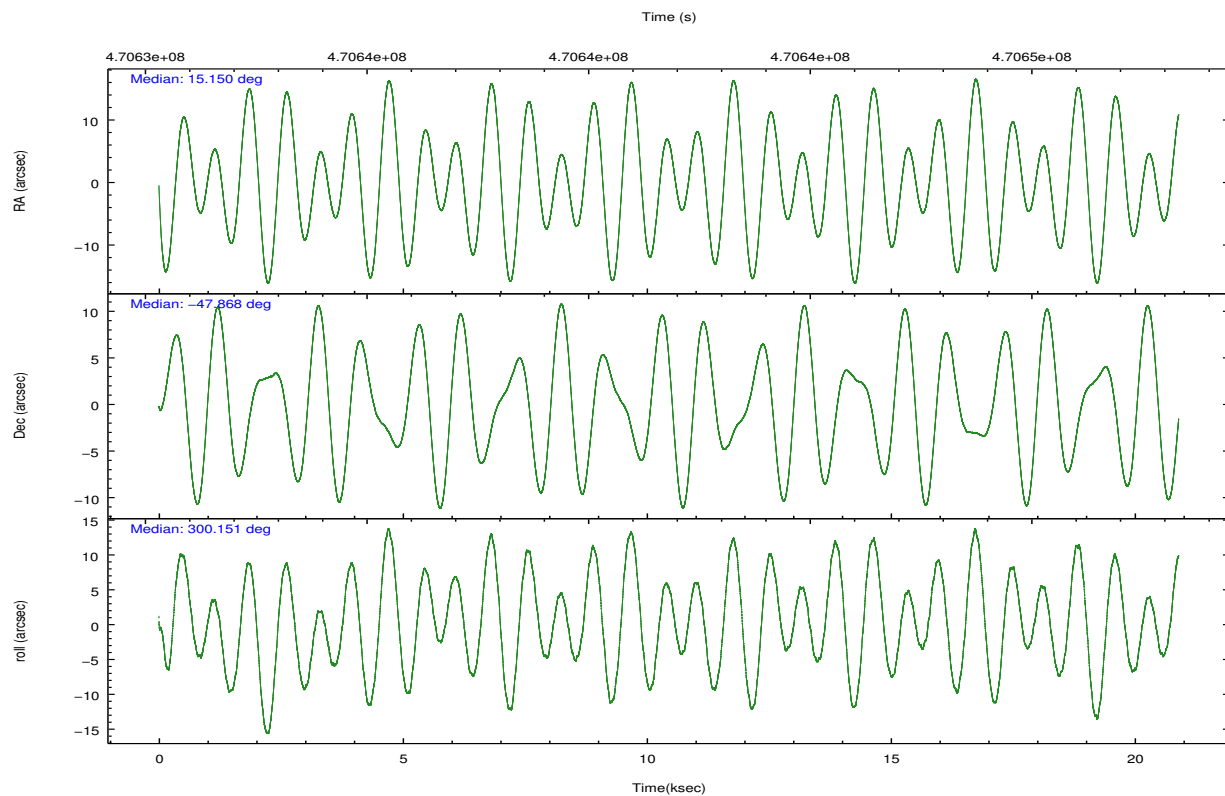
	ccd 7
grade 0 events	2121
	5%
grade 1 events	54
	0%
grade 2 events	3845
	10%
grade 3 events	2179
	5%
grade 4 events	2066
	5%
grade 5 events	3979
	10%
grade 6 events	8565
	22%
grade 7 events	15350
	40%

2.2 Compared Parameters

Parameter	Planned	Actual	Parameter	Planned	Actual
Instrument	ACIS	ACIS	Obspar format version number	7	7
Detector	ACIS-7	ACIS-7	Obspar file type	PREDICTED	ACTUAL
Grating	NONE	NONE	Obspar update status	NONE	UPDATED
Data mode	FAINT	FAINT	Number of optional ACIS chips dropped	0	0
Observation mode	POINTING	POINTING	On-chip summing requested	N	N
[deg] Pointing RA	15.114719	15.15031568111489	Subarray requested	CUSTOM	1/4
[deg] Pointing Dec	-47.854471	-47.86777055056375	Subarray start row	385	385
[deg] Pointing Roll	299.976933	300.1599436416698	Subarray row count	256	256
[mm] SIM focus pos	-0.684267	-0.6828225247311905	Alternating exposures requested	N	N
[mm] SIM defocus	0	0.001444936568705701	[s] Primary exposure time	0.000000	0.8
[mm] SIM translation stage pos	-190.132523	-190.1425803651734			
[mm] SIM translation stage offset	0	0.01005778216563158			
[s] Observation start time (MET)	470631531.184000	470630592.53043			
Observation start date	2012-11-30T02:57:44	2012-11-30T02:43:12			
[s] Observation end time (MET)	470652248.184000	470652474.7441			
Observation end date	2012-11-30T08:43:01	2012-11-30T08:47:54			
Read mode	TIMED	TIMED			

2.3 Aspect



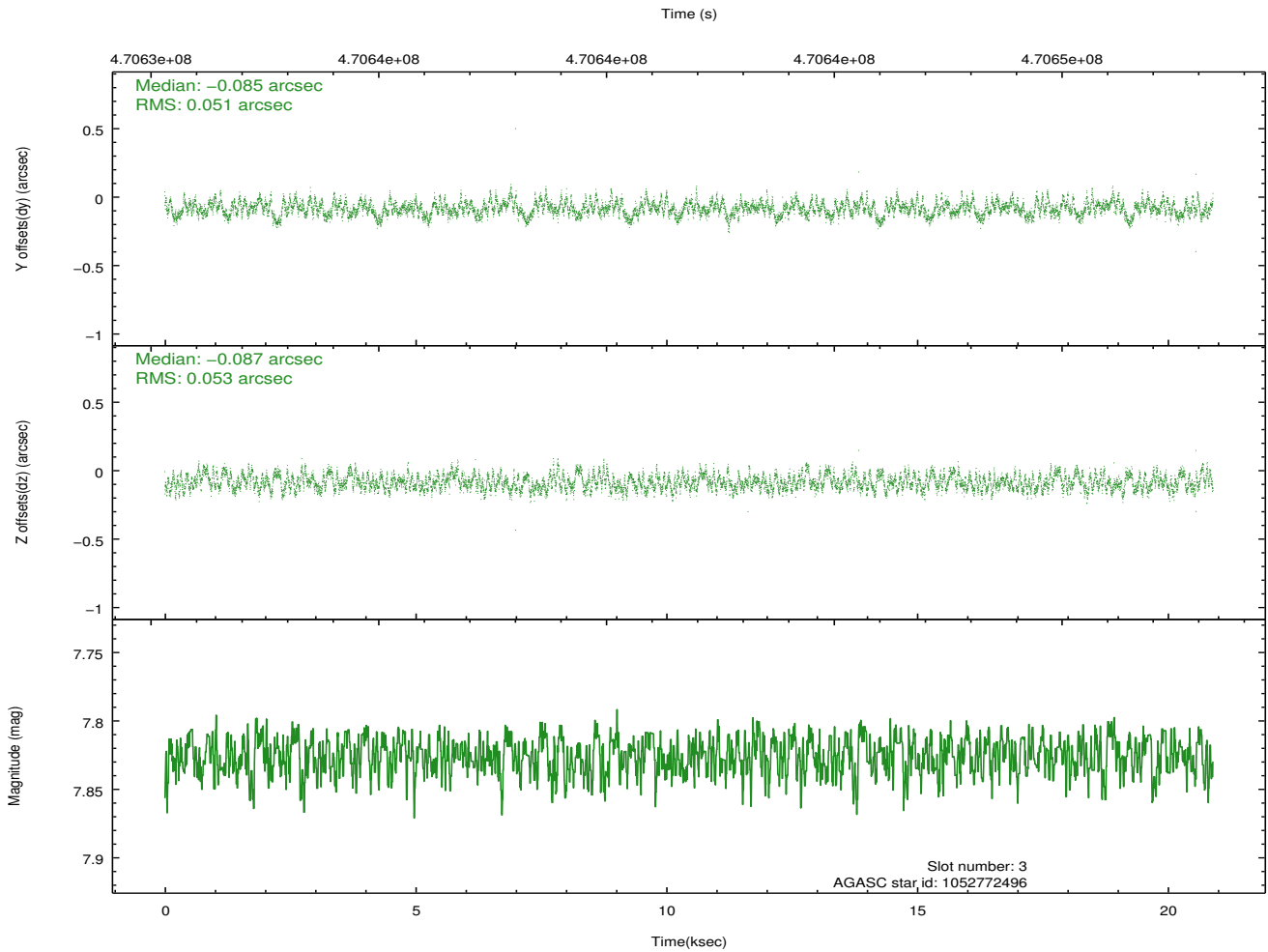
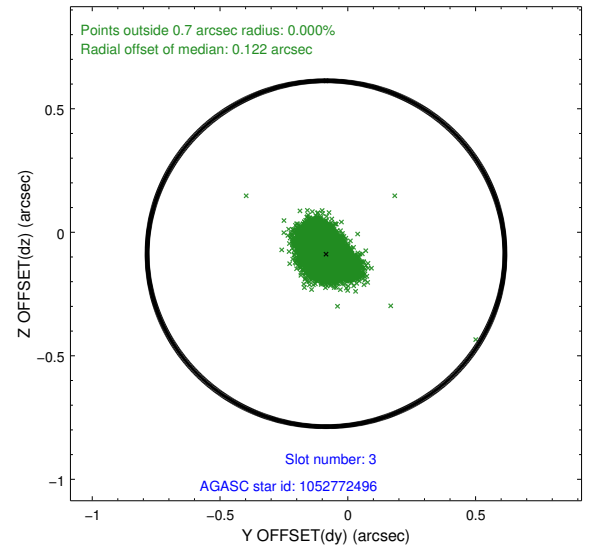
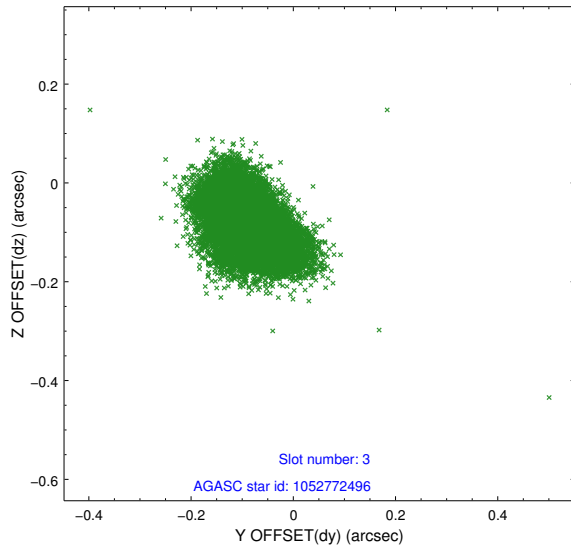


Slot Statistics

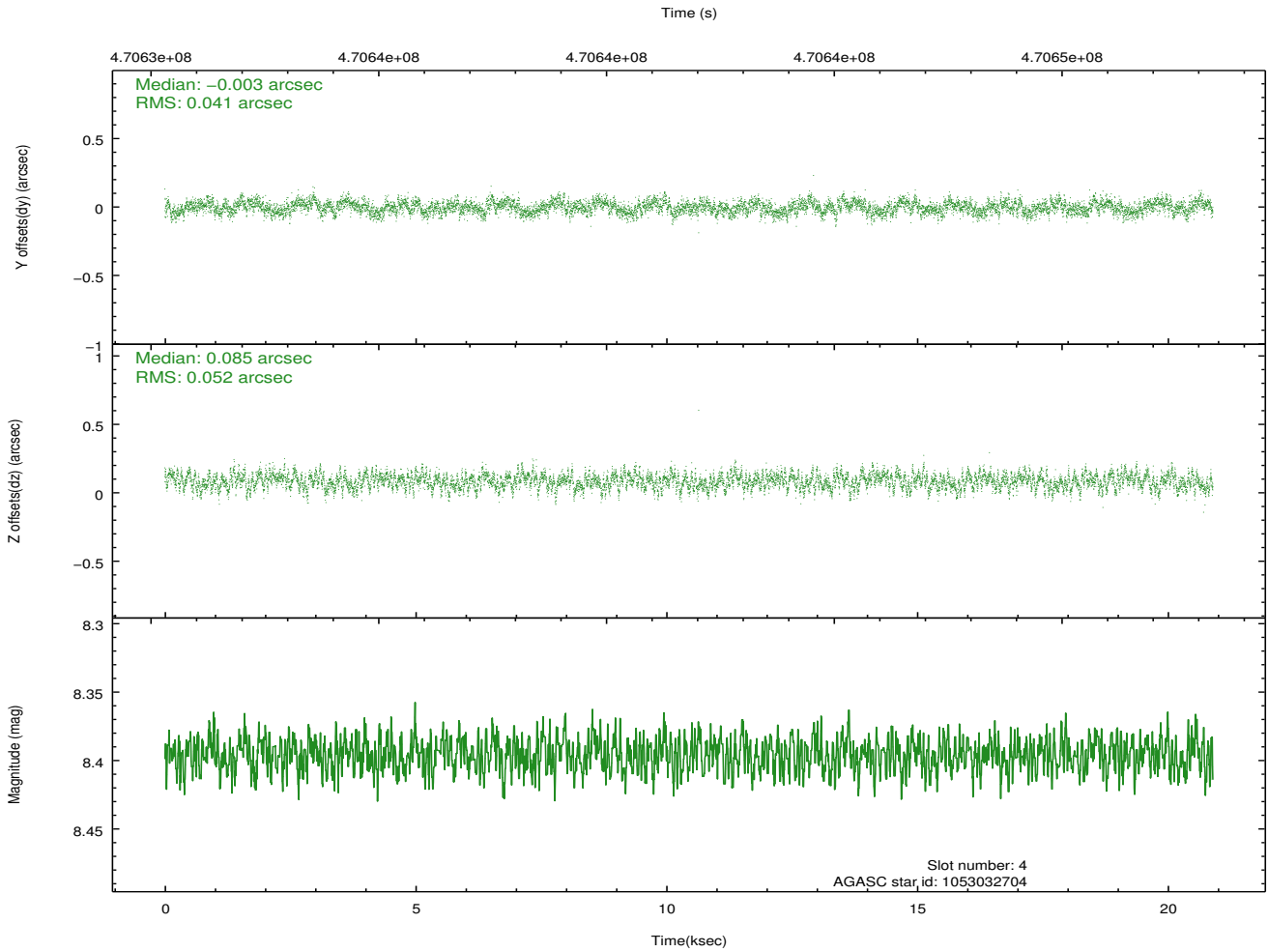
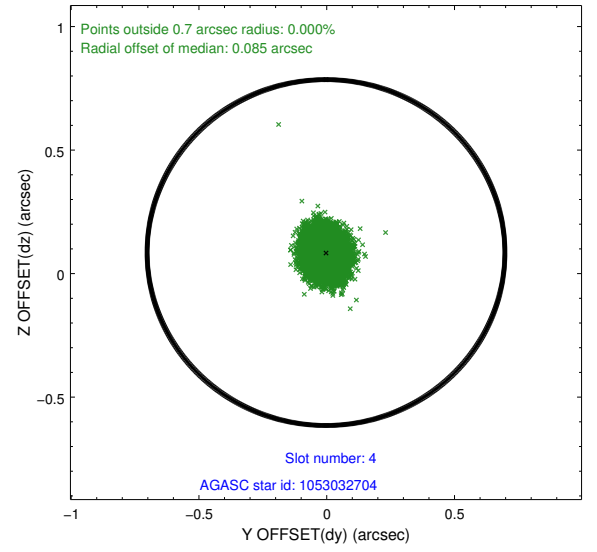
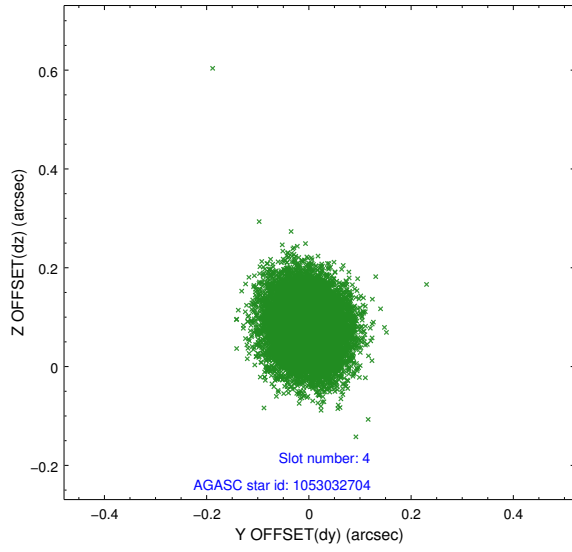
slot	status	used	id	mag	n_pts	med_dy	med_dz	dr1	dr2	ra	dec	mean_y	mean_z
0	FID		ACIS-S-2	6.99	5095	-0.051	-0.039	0.008	0.014	0.000000	0.000000	-764.56	-1734.66
1	FID		ACIS-S-4	7.08	5095	0.167	0.035	0.010	0.017	0.000000	0.000000	2148.88	173.69
2	FID		ACIS-S-5	7.11	5095	-0.149	0.013	0.007	0.012	0.000000	0.000000	-1817.26	167.57
3	GUIDE	used	1052772496	7.83	10190	-0.085	-0.087	0.079	0.124	15.683321	-47.287577	-1068.47	2218.81
4	GUIDE	used	1053032704	8.40	10191	-0.003	0.085	0.071	0.113	14.748378	-47.804035	-597.64	-677.34
5	GUIDE	used	1053033288	9.31	10179	-0.107	0.098	0.134	0.202	14.080784	-47.724718	-1640.64	-1943.69
6	GUIDE	used	1053033936	8.46	10190	-0.083	0.079	0.078	0.120	14.393225	-47.564640	-1772.22	-1000.46
7	GUIDE	used	1053041368	9.31	10185	0.275	-0.178	0.126	0.202	14.581071	-48.573397	1611.55	-2396.14

2.4 Star Slots

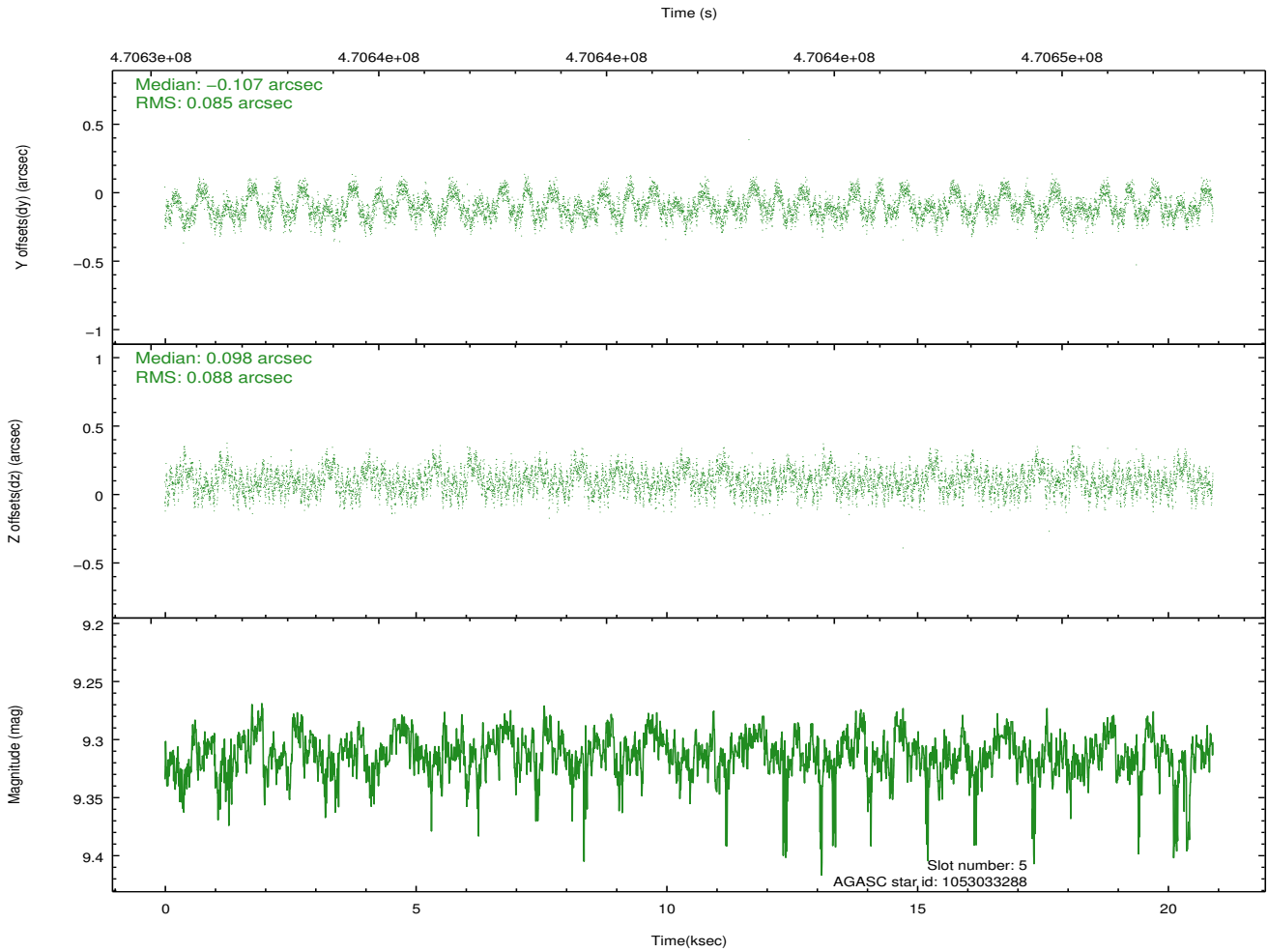
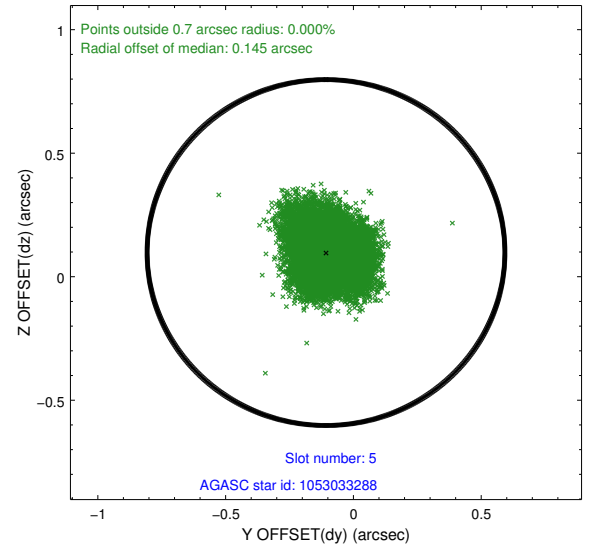
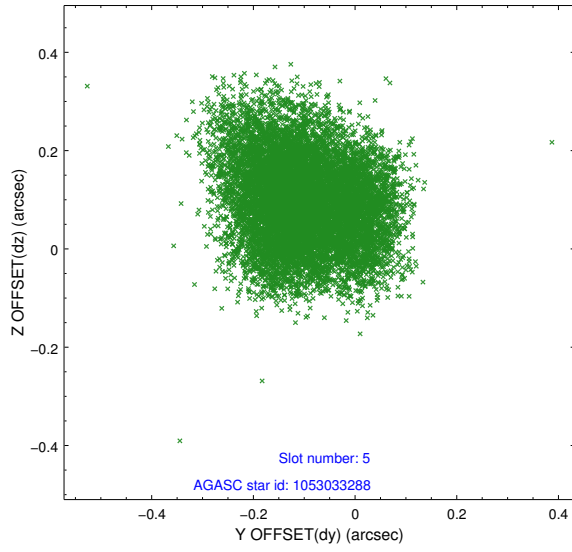
2.4.1 Slot 3



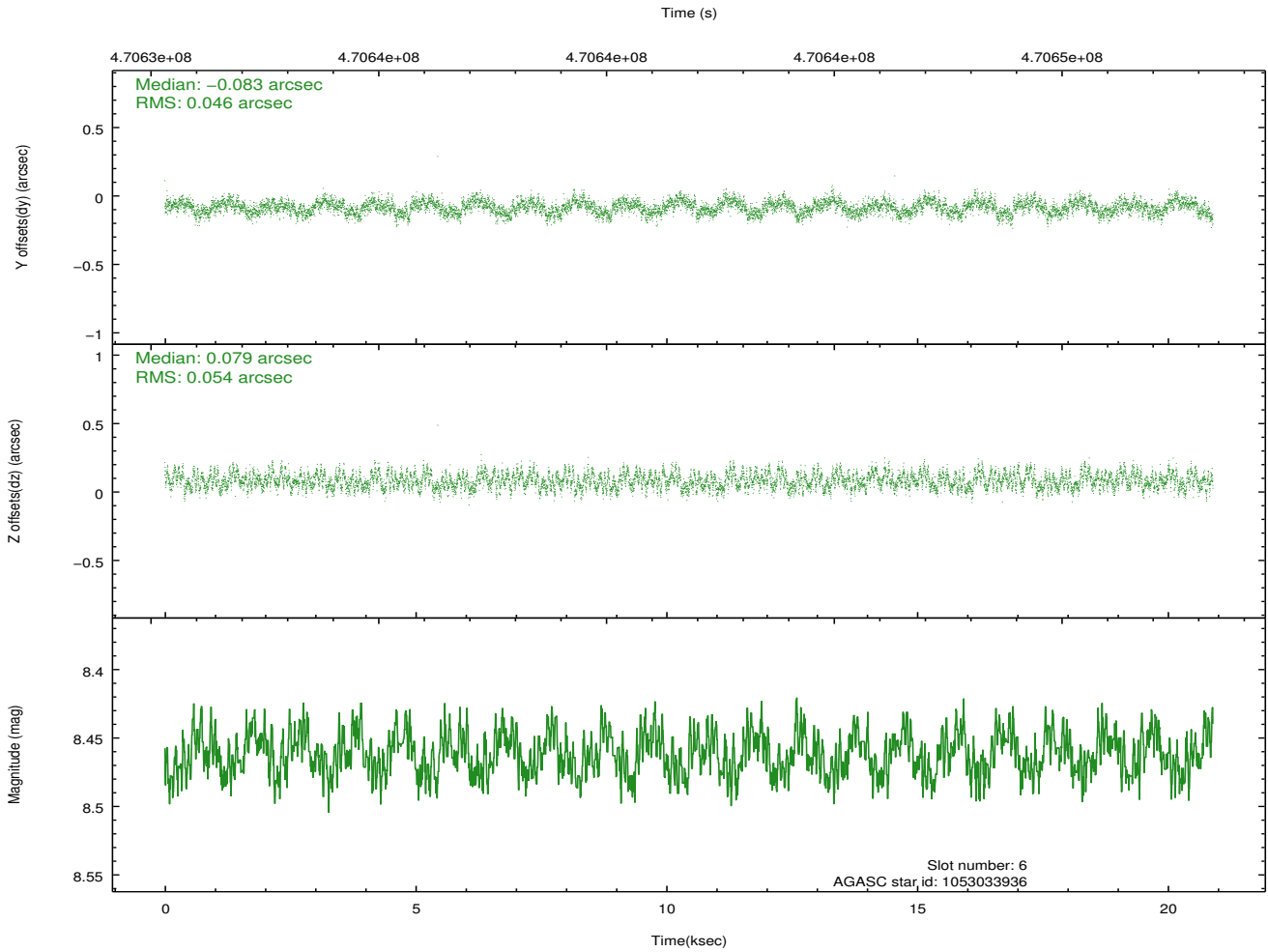
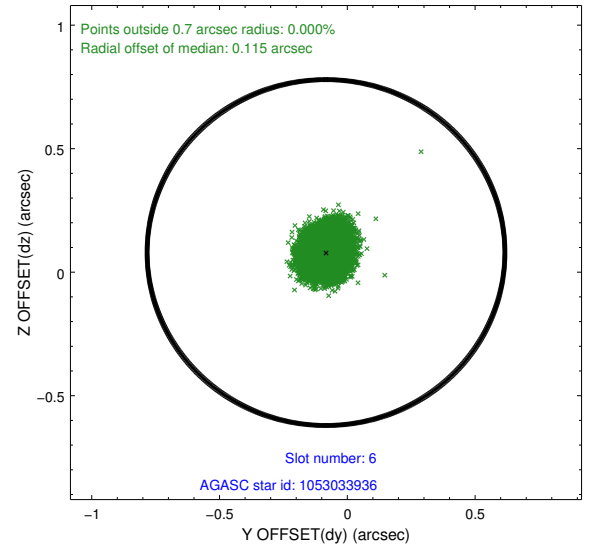
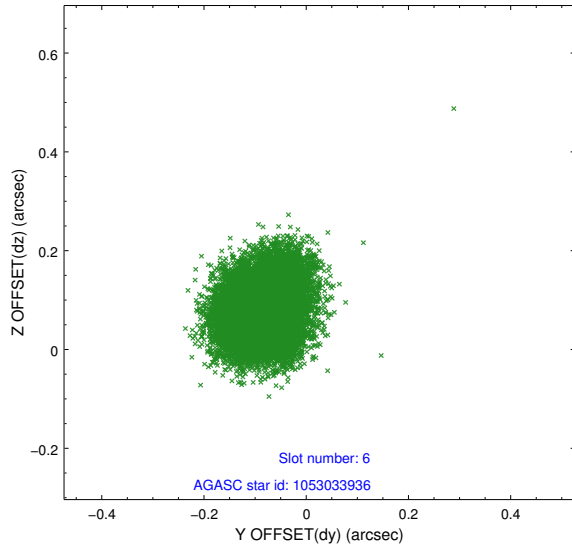
2.4.2 Slot 4



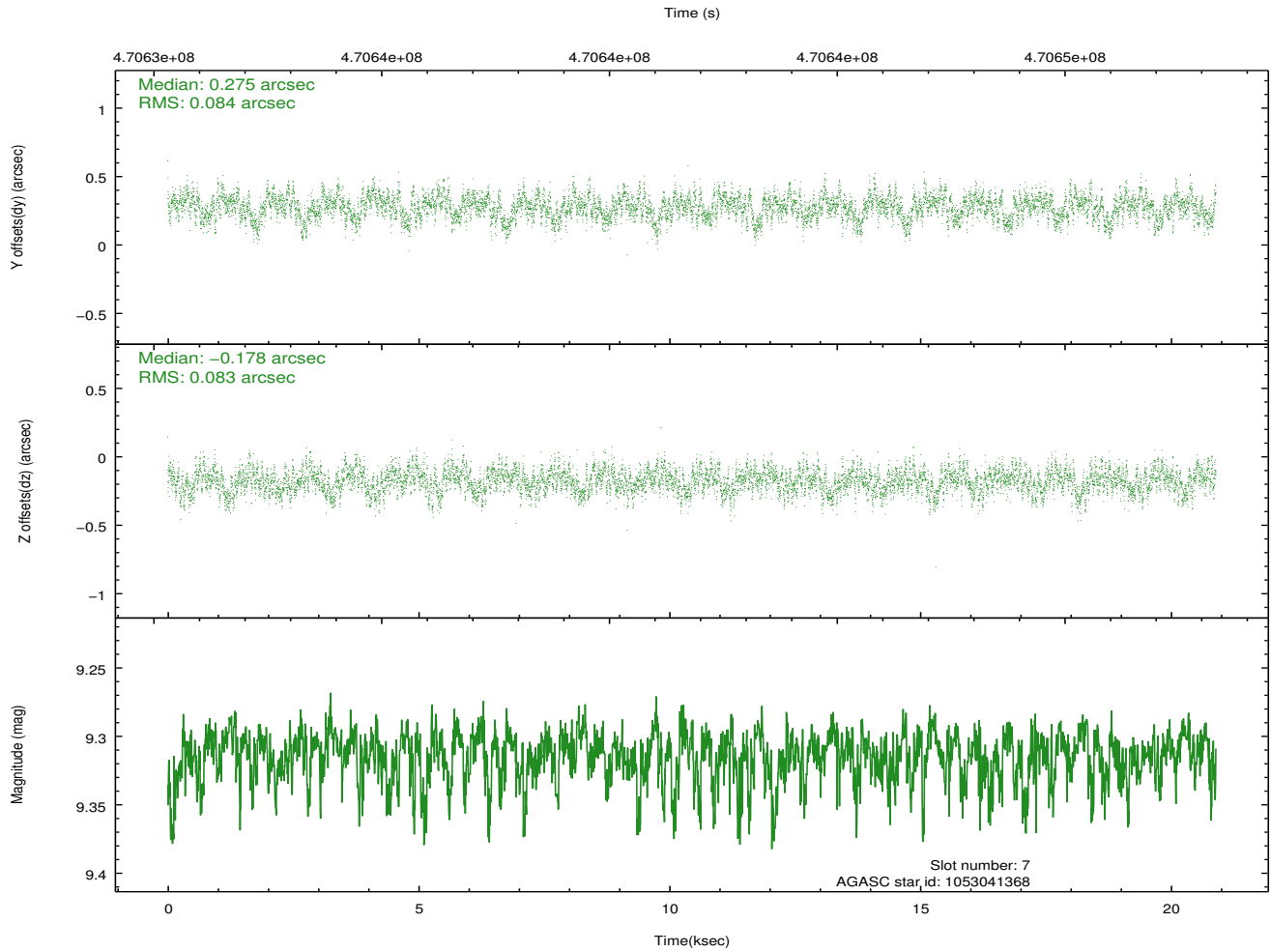
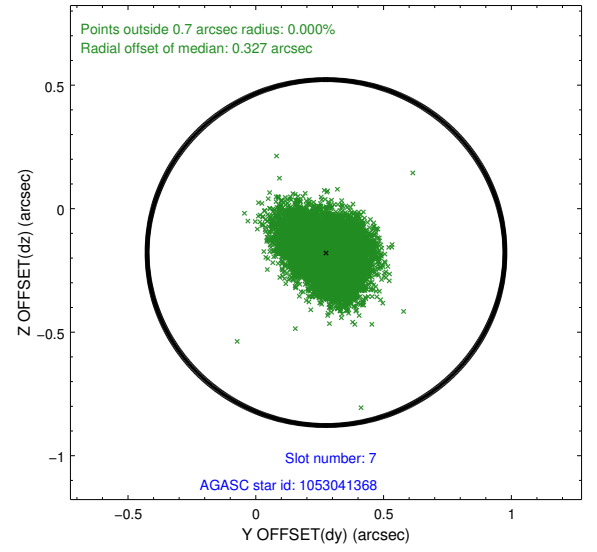
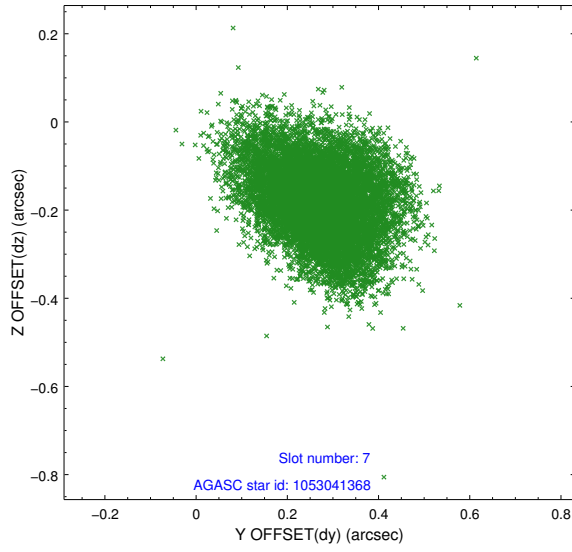
2.4.3 Slot 5



2.4.4 Slot 6

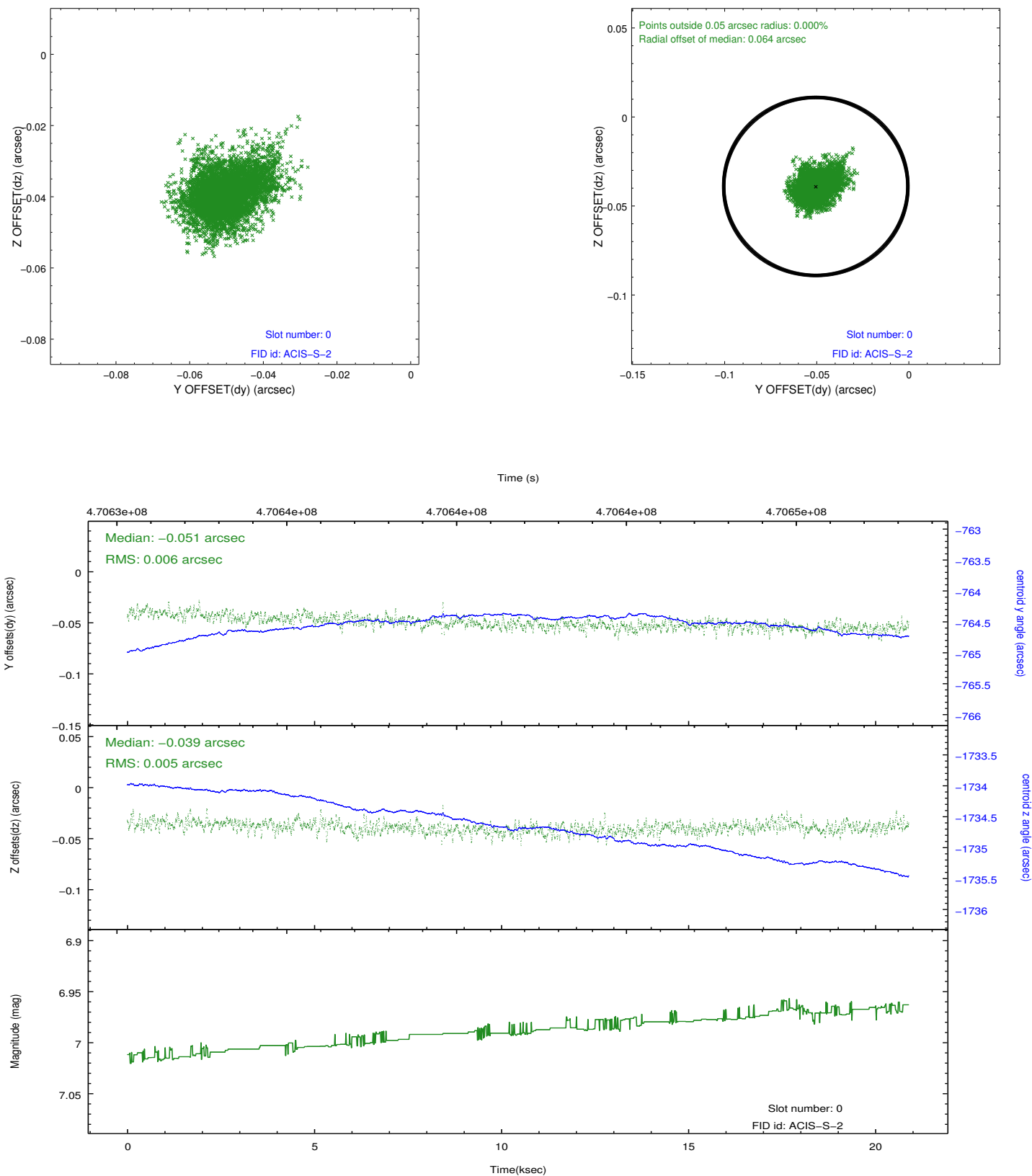


2.4.5 Slot 7

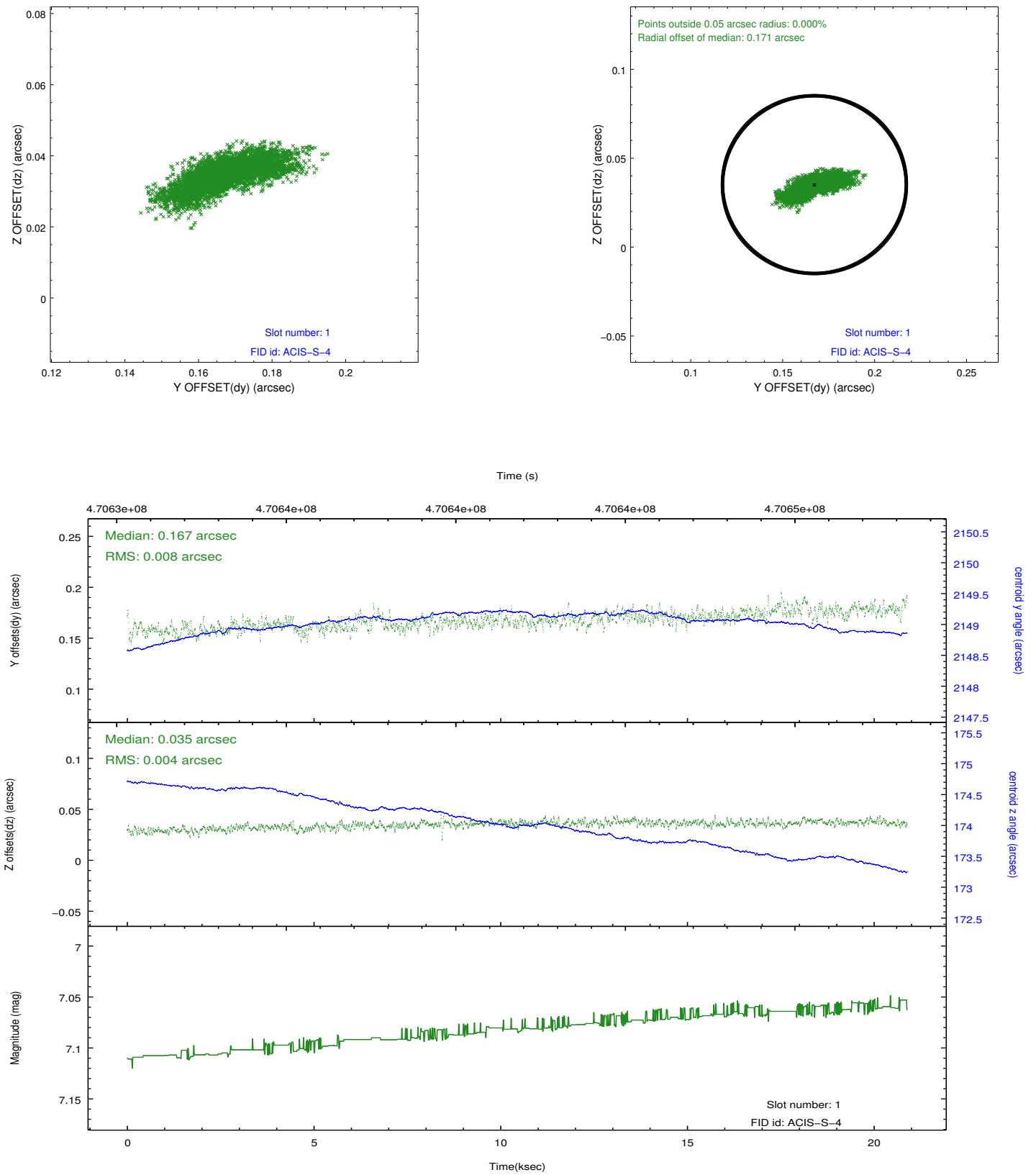


2.5 FID Slots

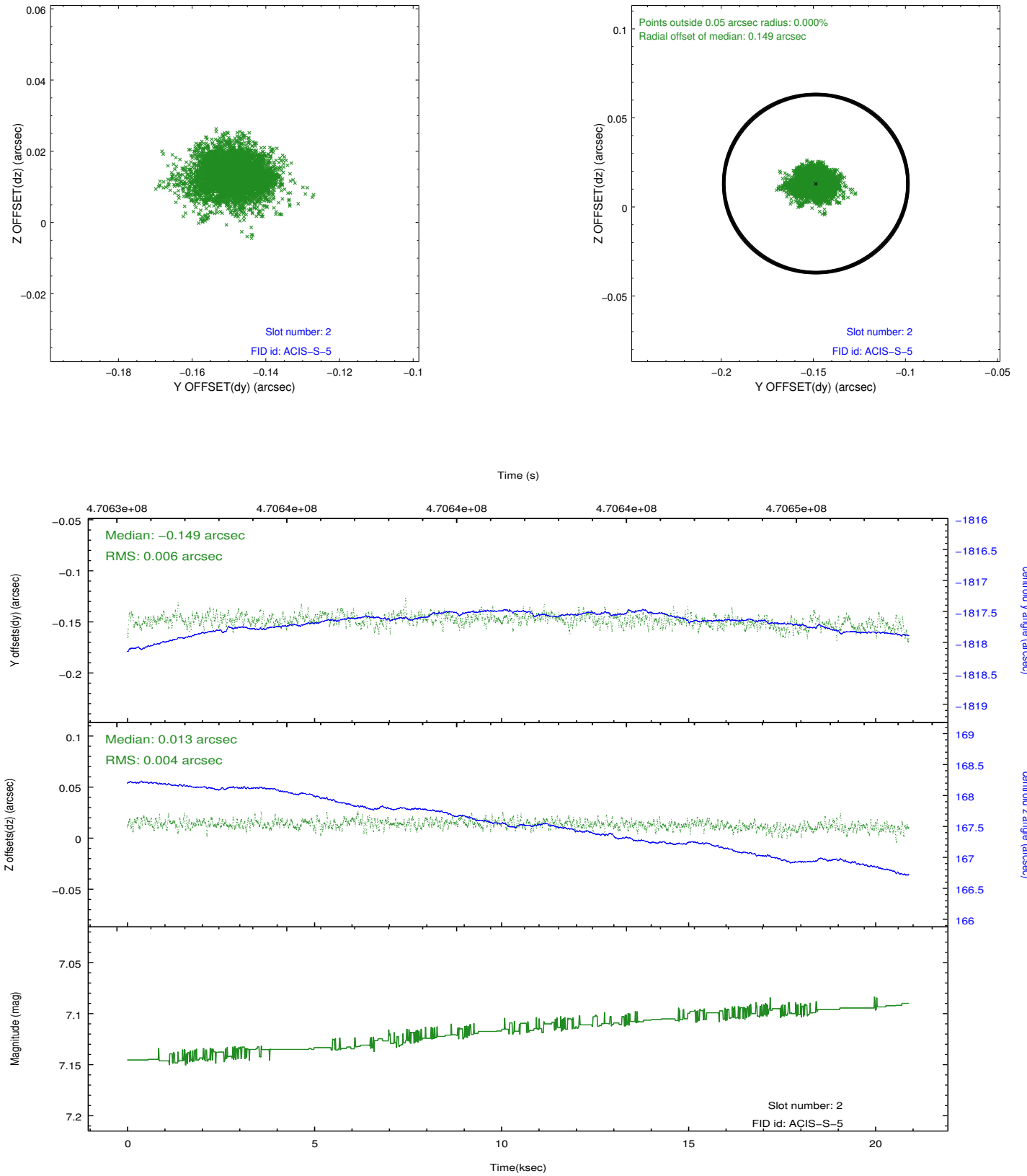
2.5.1 Slot 0



2.5.2 Slot 1



2.5.3 Slot 2



A Summary

A.1 Status

V&V Scientist	Beth Sundheim
V&V Date (YYYY-MM-DD)	2014.12.03
V&V Edition	1
V&V Disposition and Status	OK
V&V Charge Time	20.775482020199

A.2 Comments

These data have been reprocessed with new aspect alignment calibration files that correct small mean offsets (up to 0.4 arcsecs) and improve overall astrometric accuracy. The new calibration was determined using data from the time period being reprocessed and was performed using cross-correlation of X-ray sources with radio and optical counterparts.