

# V&V Reference Report

## L2 ASCDS Version : 8.4.3

Observation 13892 - L2 Version 2  
Chandra X-Ray Center

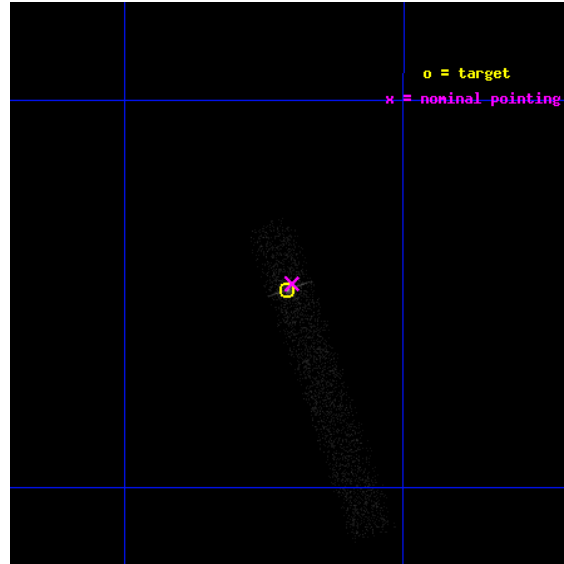
L2 Processing Date : Feb 28 2012

## Contents

<b>1</b>	<b>Front</b>	<b>2</b>
<b>2</b>	<b>OBI</b>	<b>3</b>
2.1	OBI . . . . .	3
2.1.1	Images . . . . .	3
2.1.2	Bias . . . . .	3
2.1.3	Parameters . . . . .	4
2.1.4	Events . . . . .	4
2.2	Compared Parameters . . . . .	5
2.3	Aspect . . . . .	6
2.4	Star Slots . . . . .	9
2.4.1	Slot 3 . . . . .	9
2.4.2	Slot 4 . . . . .	10
2.4.3	Slot 5 . . . . .	11
2.4.4	Slot 6 . . . . .	12
2.4.5	Slot 7 . . . . .	13
2.5	FID Slots . . . . .	14
2.5.1	Slot 0 . . . . .	14
2.5.2	Slot 1 . . . . .	15
2.5.3	Slot 2 . . . . .	16
<b>A</b>	<b>Summary</b>	<b>17</b>
A.1	Status . . . . .	17
A.2	Comments . . . . .	17

# 1 Front

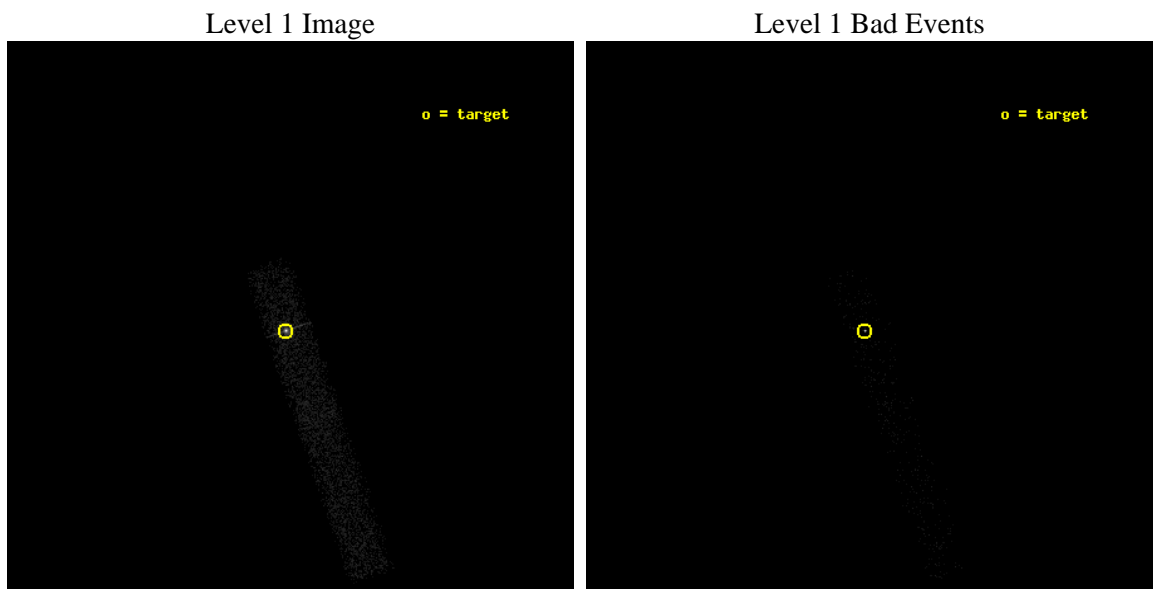
seq_num	702617	Sequence number
obs_id	13892	Observation id
title	CHANDRA SURVEY OF DUAL ACTIVATION IN HARD X-RAY SELECTED MERGING AGN HOSTS	Proposal title
observer	Dr. Richard Mushotzky	Principal investigator
object	NGC 4748	Source name
dtcycle	0	&#160
cycle	P	events from which exps? Prim/Second/Both
ra_targ	193.052083	Observer's specified target RA [deg]
dec_targ	-13.414722	Observer's specified target Dec [deg]
ra_nom	193.05007543346	Nominal RA [deg]
dec_nom	-13.412370127092	Nominal Dec [deg]
roll_nom	70.958898271453	Nominal Roll [deg]
revision	2	Processing version of data
ontime	5009.1550297737	Sum of GTIs [s]
livetime	4543.0392071229	Livetime [s]
ontime7	5009.1550297737	Sum of GTIs [s]
l2events	11213	Number of level 2 events



## 2 OBI

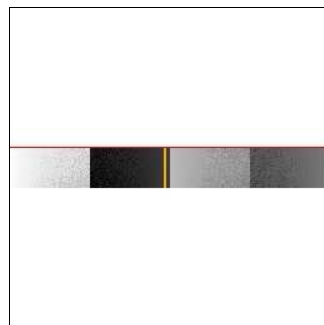
### 2.1 OBI

#### 2.1.1 Images



#### 2.1.2 Bias

Chip 7



### 2.1.3 Parameters

obi_num	0	Obi number	sched_exp_time	4999.970000	[s] Scheduled observation exposure time
ascdsver	8.4.3	Processing system revision	ontime	5009.1550297737	Sum of GTIs [s]
caldsver	4.4.8	&#160	ontime7	5009.1550297737	Sum of GTIs [s]
date	2012-02-28T16:02:45	Date and time of file creation	l1events	16219	Number of level 1 events
revision	2	Processing version of data			

### 2.1.4 Events

	<b>ccd 7</b>
level 1 events	16219
rejected events	4851
rejected %	29%

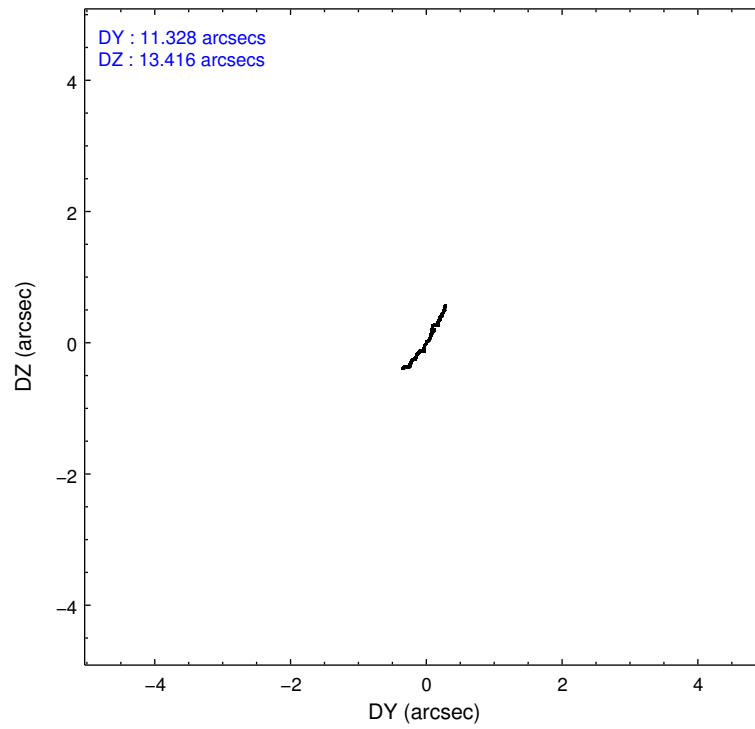
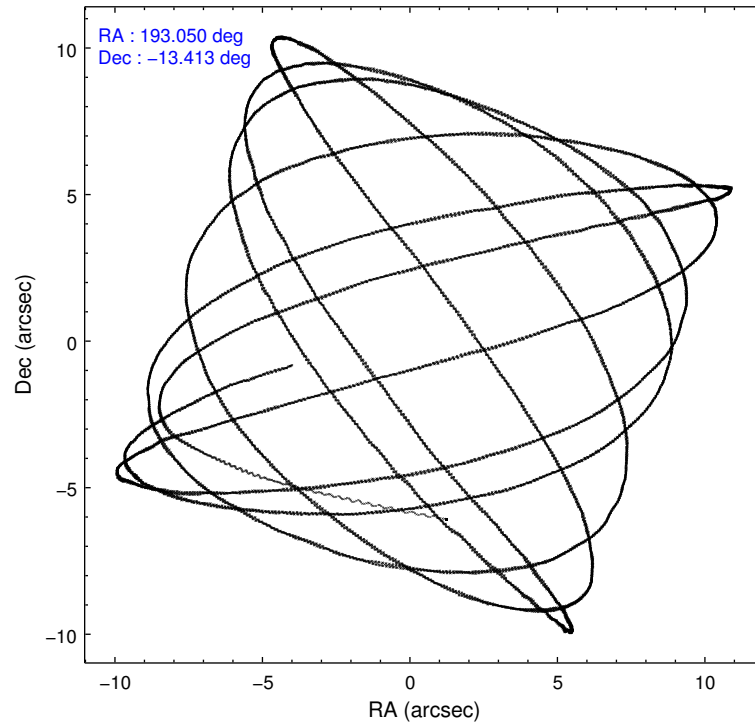
	<b>ccd 7</b>
grade 0 events	2388
	14%
grade 1 events	189
	1%
grade 2 events	2678
	16%
grade 3 events	1267
	7%
grade 4 events	1268
	7%
grade 5 events	1409
	8%
grade 6 events	3768
	23%
grade 7 events	3252
	20%

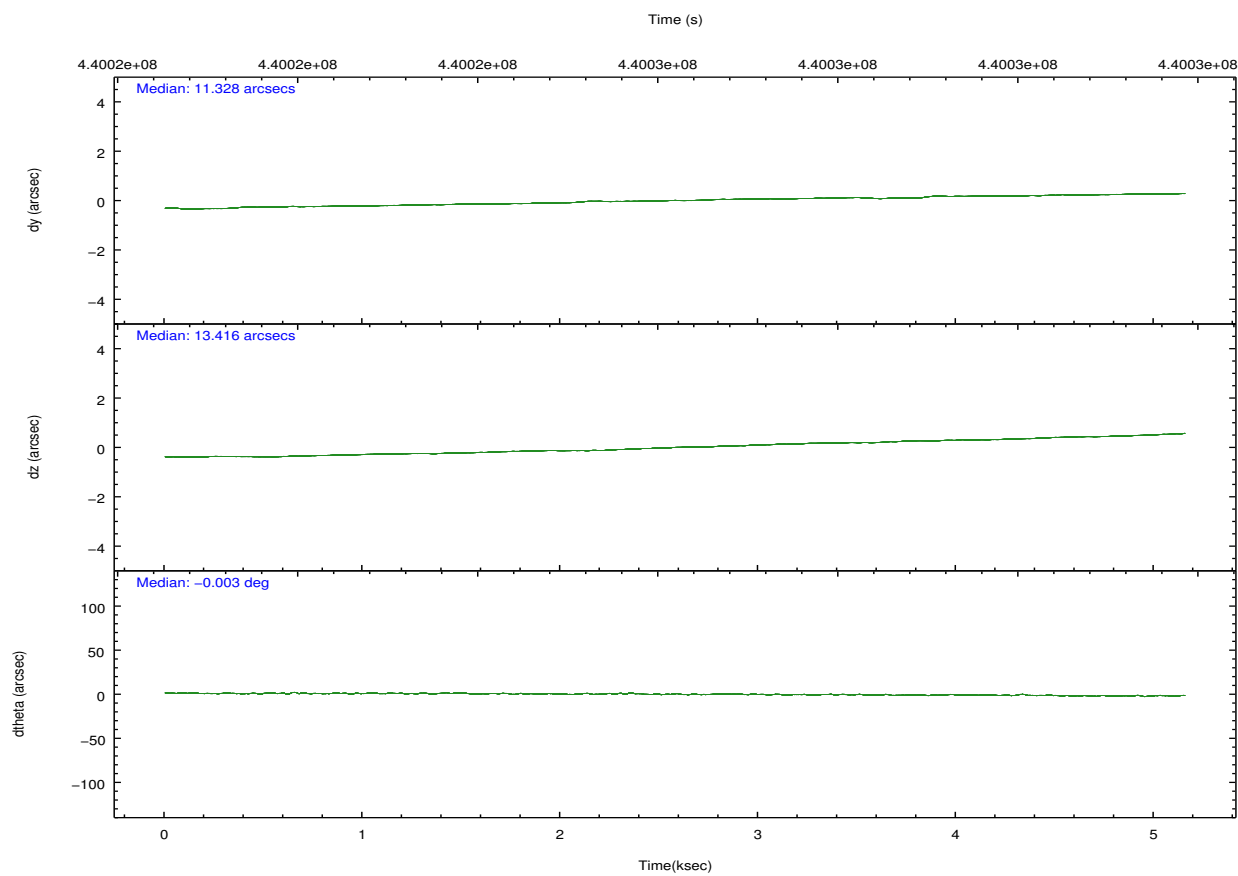
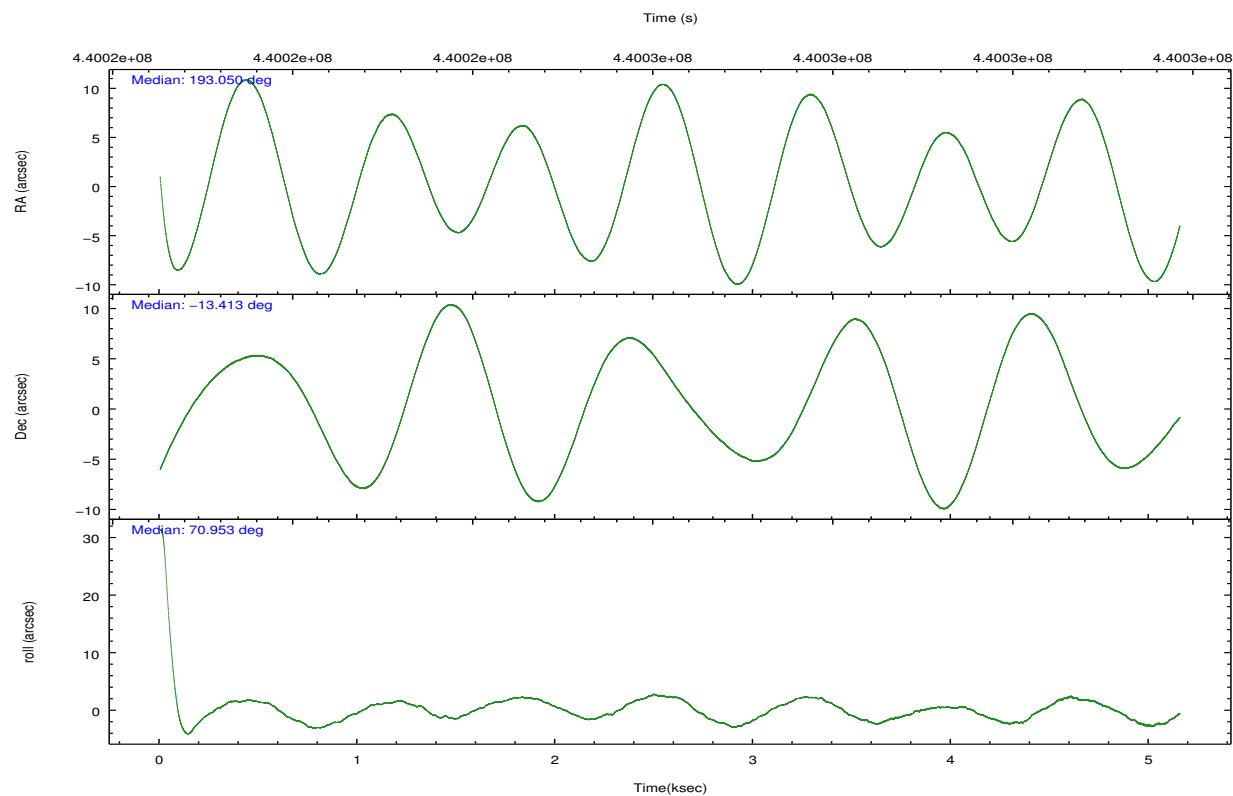


## 2.2 Compared Parameters

Parameter	Planned	Actual	Parameter	Planned	Actual
Instrument	ACIS	ACIS	Obspar format version number	7	7
Detector	ACIS-7	ACIS-7	Obspar file type	PREDICTED	ACTUAL
Grating	NONE	NONE	Obspar update status	NONE	UPDATED
Data mode	FAINT	FAINT	Number of optional ACIS chips dropped	0	0
Observation mode	POINTING	POINTING	On-chip summing requested	N	N
[deg] Pointing RA	193.055868	193.0500754334577	Subarray requested	CUSTOM	1/8
[deg] Pointing Dec	-13.439118	-13.41237012709188	Subarray start row	449	449
[deg] Pointing Roll	70.803543	70.95889827145272	Subarray row count	128	128
[mm] SIM focus pos	-0.684267	-0.6828225247311905	Alternating exposures requested	N	N
[mm] SIM defocus	0	0.001444936568705701	[s] Primary exposure time	0.000000	0.4
[mm] SIM translation stage pos	-190.132523	-190.1400660498719			
[mm] SIM translation stage offset	0	0.00754346686406393			
[s] Observation start time (MET)	440023681.184000	440022832.20392			
Observation start date	2011-12-11T20:46:55	2011-12-11T20:33:52			
[s] Observation end time (MET)	440028681.184000	440028907.37924			
Observation end date	2011-12-11T22:10:15	2011-12-11T22:15:07			
Read mode	TIMED	TIMED			

## 2.3 Aspect



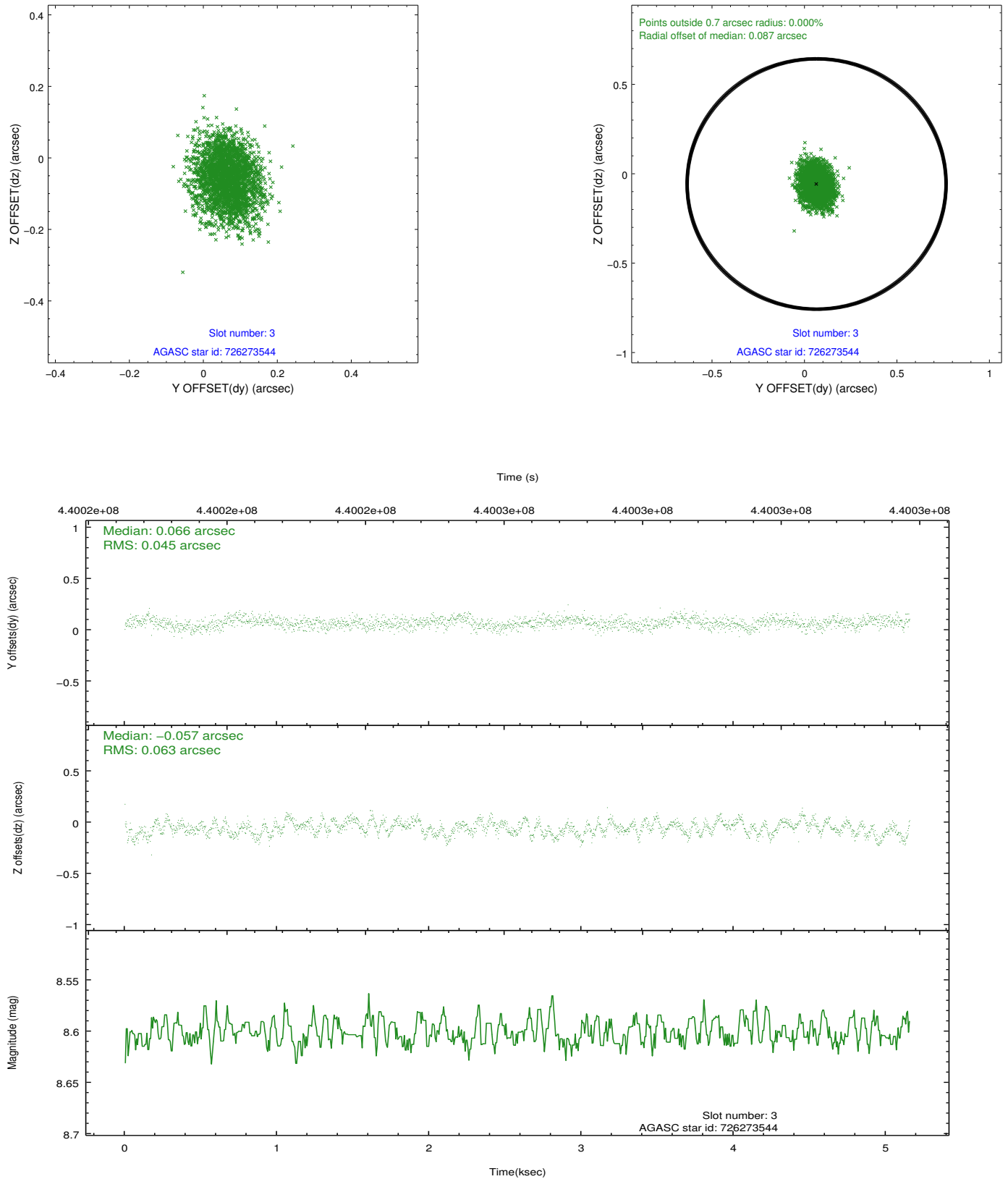


### Slot Statistics

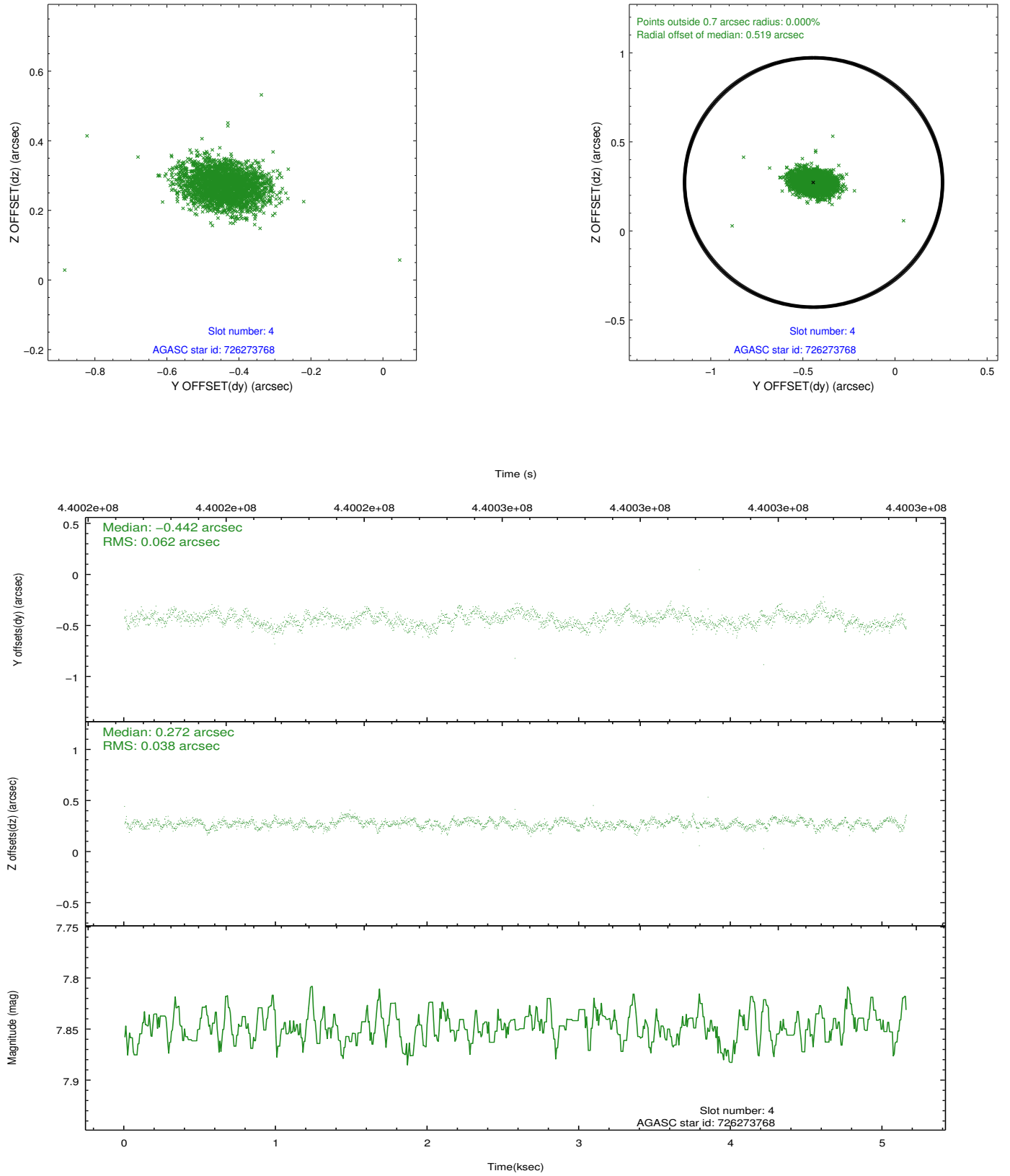
slot	status	id	mag	n_pts	med_dy	med_dz	dr1	dr2	ra	dec	mean_y	mean_z
0	FID	ACIS-S-2	6.96	1258	-0.047	-0.051	0.007	0.012	0.000000	0.000000	-764.25	-1734.81
1	FID	ACIS-S-4	7.06	1258	0.186	0.037	0.007	0.012	0.000000	0.000000	2148.74	172.50
2	FID	ACIS-S-5	7.10	1258	-0.169	0.024	0.007	0.012	0.000000	0.000000	-1815.68	167.55
3	GUIDE	726273544	8.60	2511	0.066	-0.057	0.082	0.133	193.424804	-13.644941	-274.67	-1463.83
4	GUIDE	726273768	7.85	2516	-0.442	0.272	0.075	0.125	193.607129	-12.937434	2338.96	-1233.09
5	GUIDE	726277440	8.84	2514	0.004	-0.067	0.072	0.115	193.037247	-14.036174	-2049.77	-645.55
6	GUIDE	726277768	8.92	2503	0.062	0.112	0.104	0.164	193.555520	-13.986505	-1289.38	-2296.60
7	GUIDE	726280800	8.89	2512	0.313	-0.261	0.085	0.141	192.258911	-13.631789	-1577.40	2402.30

## 2.4 Star Slots

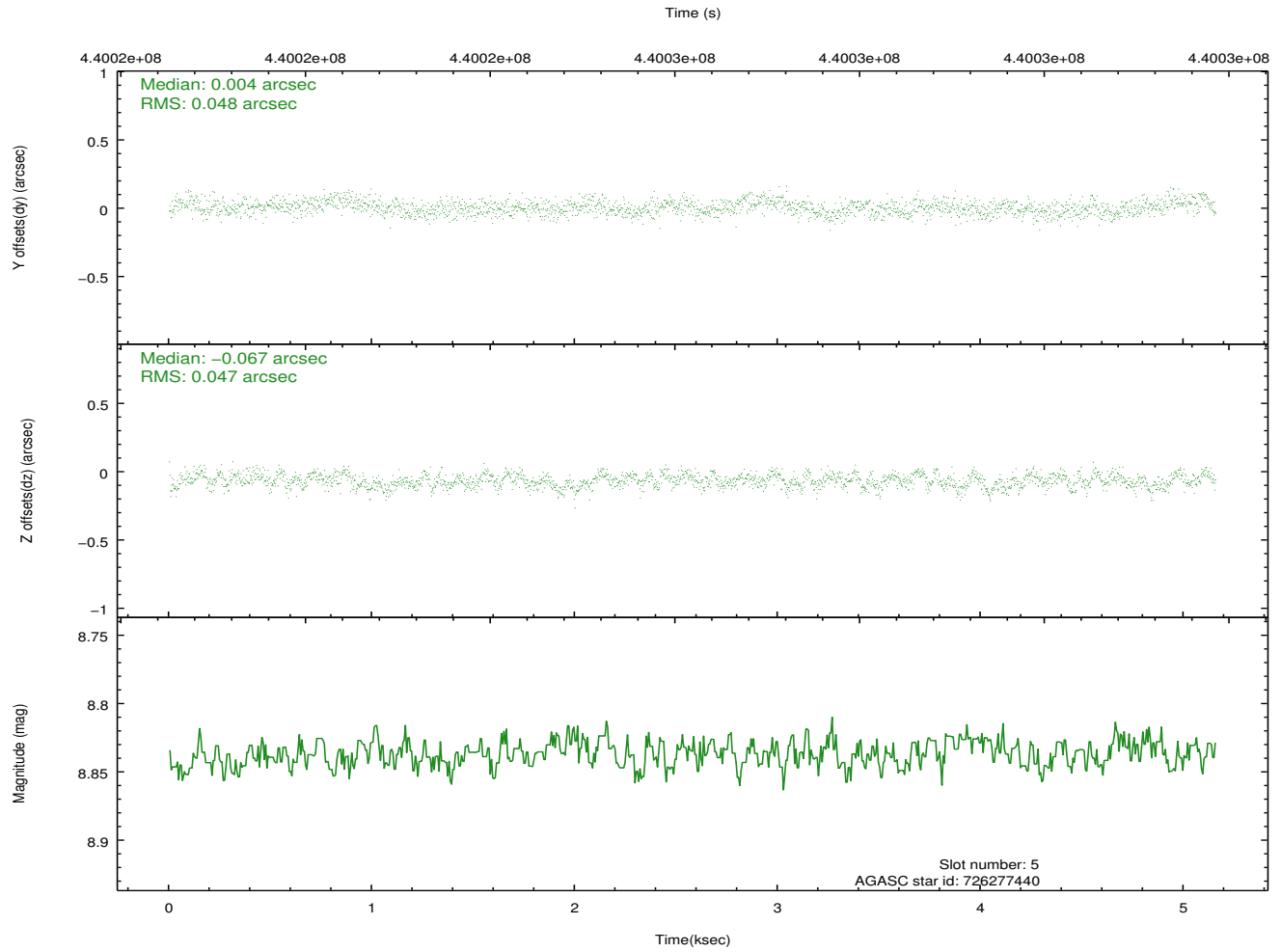
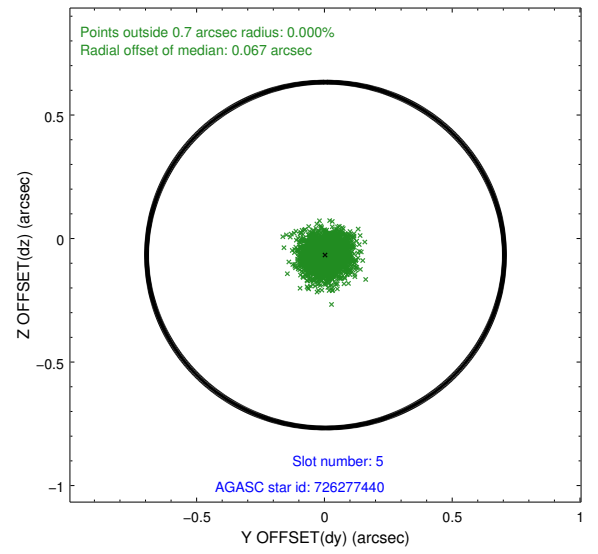
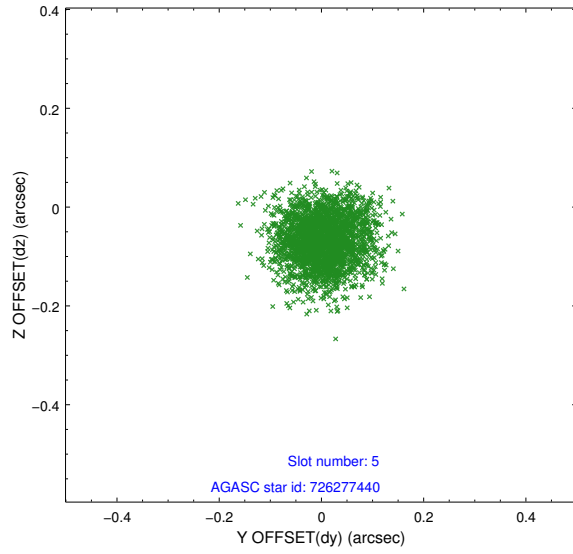
### 2.4.1 Slot 3



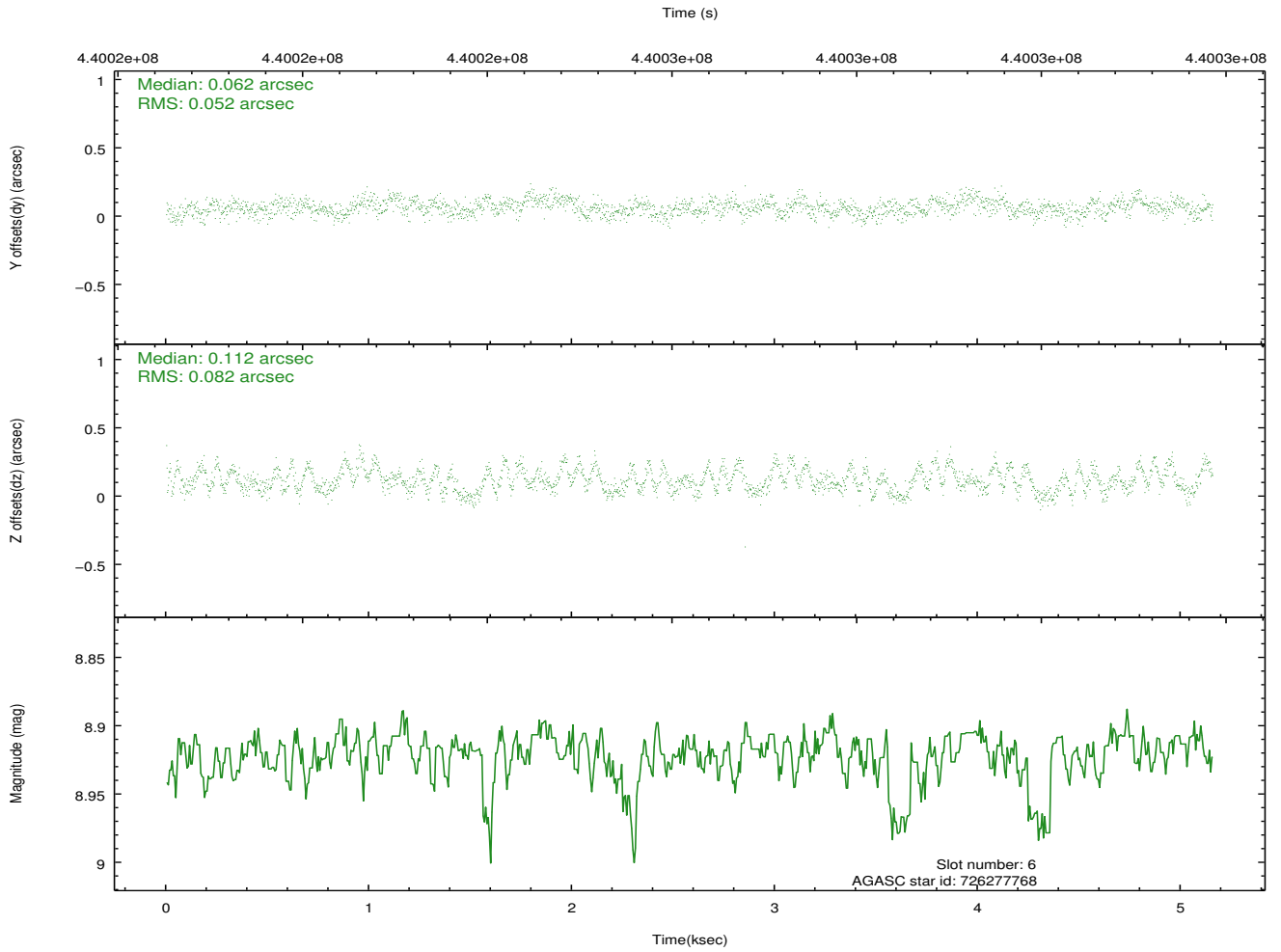
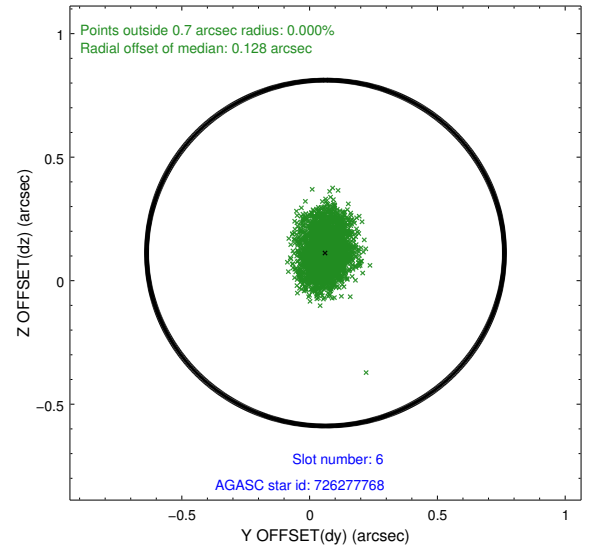
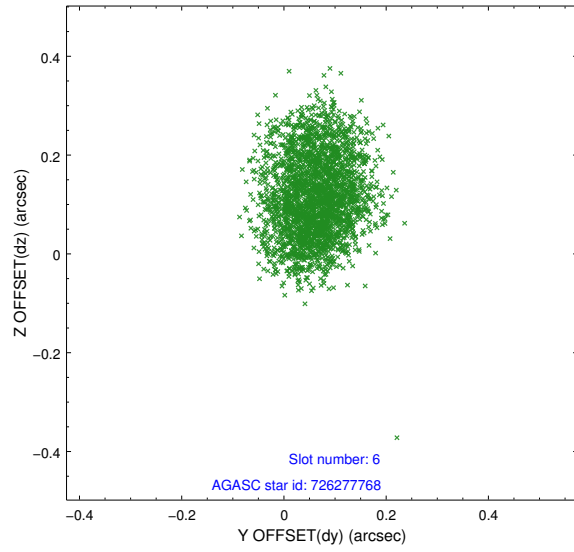
## 2.4.2 Slot 4



### 2.4.3 Slot 5

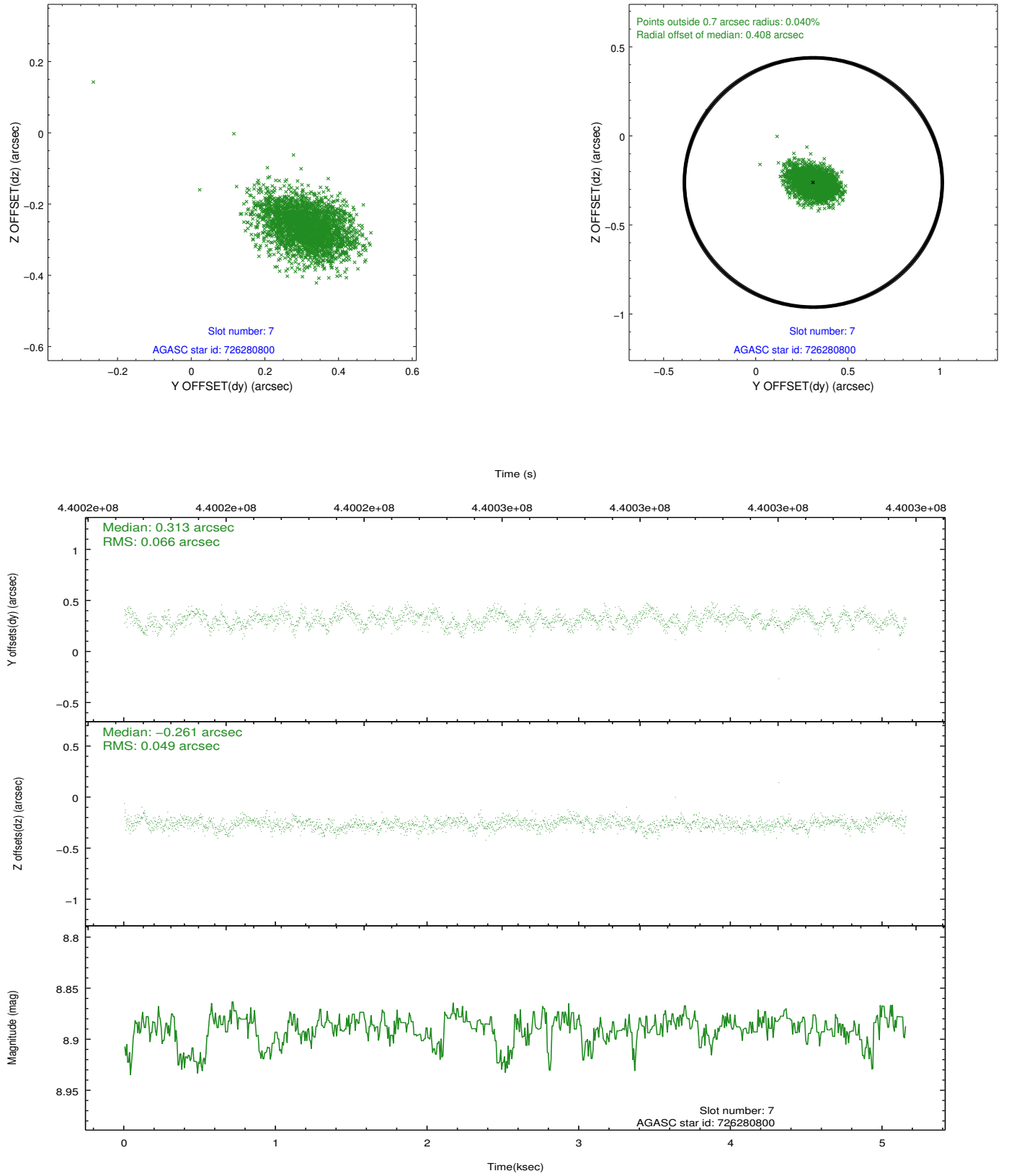


## 2.4.4 Slot 6



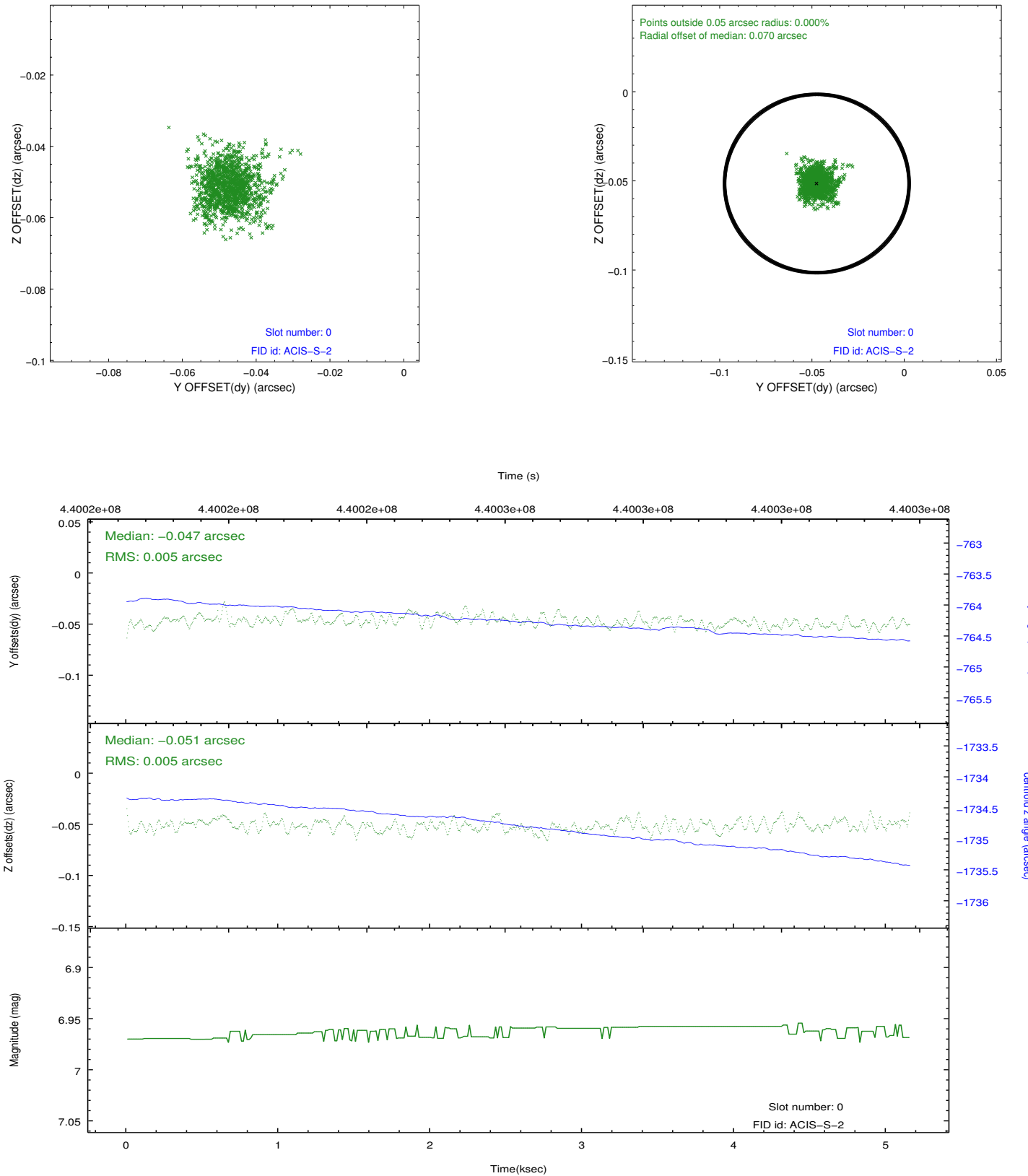


## 2.4.5 Slot 7

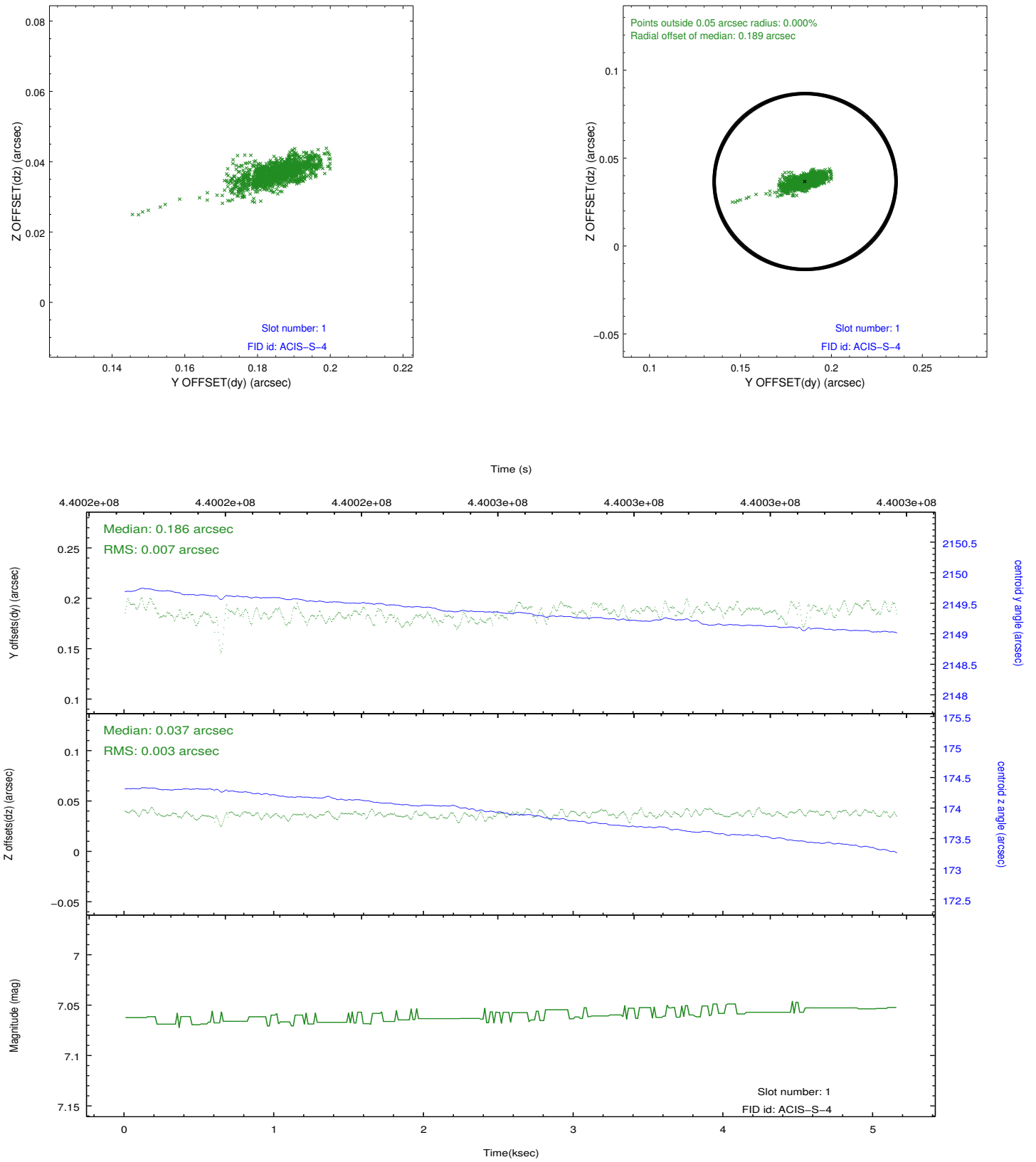


## 2.5 FID Slots

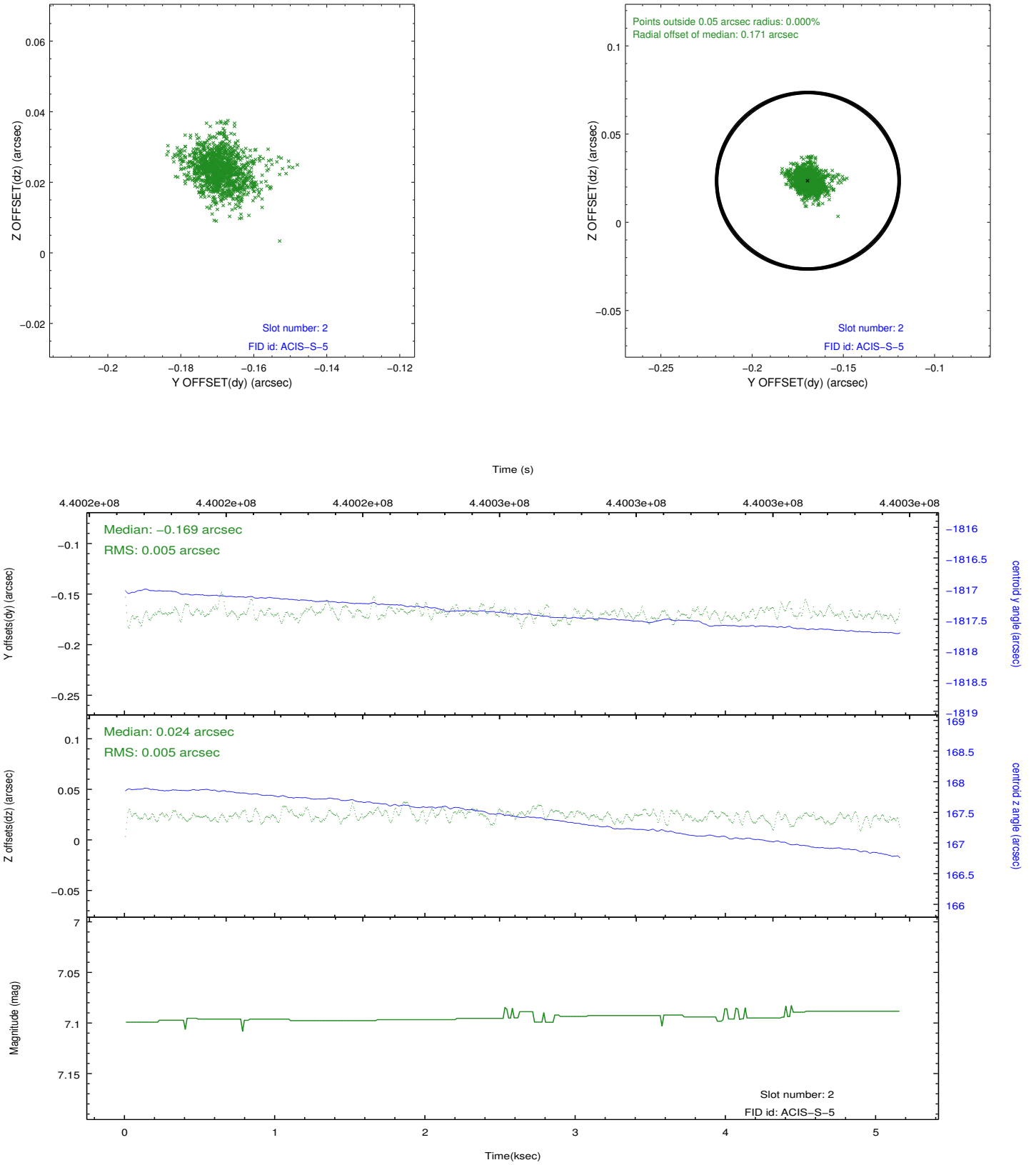
### 2.5.1 Slot 0



## 2.5.2 Slot 1



### 2.5.3 Slot 2



## A Summary

### A.1 Status

V&V Scientist	Jen Lauer
V&V Date (YYYY-MM-DD)	2012.02.29
V&V Edition	1
V&V Disposition and Status	OK
V&V Charge Time	5.0091550300121

### A.2 Comments