

V&V Reference Report

L2 ASCDS Version : 8.4.3

Observation 13835 - L2 Version 2
Chandra X-Ray Center

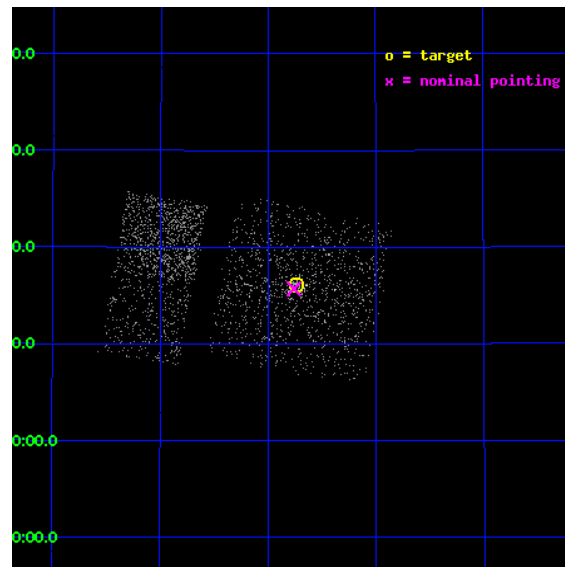
L2 Processing Date : Feb 28 2012

Contents

1	Front	2
2	OBI Primary	3
2.1	OBI	3
2.1.1	Images	3
2.1.2	Bias	3
2.1.3	Parameters	4
2.1.4	Events	4
2.2	Compared Parameters	5
2.3	Aspect	6
2.4	Star Slots	9
2.4.1	Slot 3	9
2.4.2	Slot 4	10
2.4.3	Slot 5	11
2.4.4	Slot 6	12
2.4.5	Slot 7	13
2.5	FID Slots	14
2.5.1	Slot 0	14
2.5.2	Slot 1	15
2.5.3	Slot 2	16
3	OBI Secondary	17
3.1	OBI	17
3.1.1	Images	17
3.1.2	Bias	17
3.1.3	Parameters	18
3.1.4	Events	18
A	Summary	19
A.1	Status	19
A.2	Comments	19

1 Front

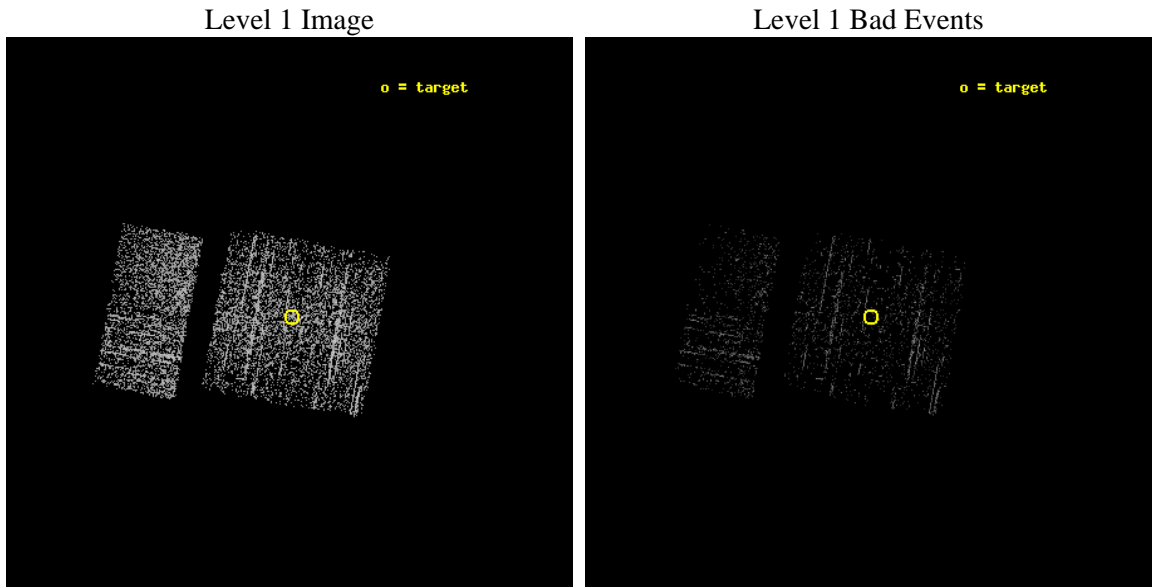
seq_num	601009	Sequence number
obs_id	13835	Observation id
title	Monitoring M31 for BHXNe	Proposal title
observer	Dr Michael Garcia	Principal investigator
object	M31 BHXN	Source name
dtcycle	0	
cycle	P	events are from which exps? P[rimary] S[econdar
ra_targ	10.685	Observer's specified target RA [deg]
dec_targ	41.268972	Observer's specified target Dec [deg]
ra_nom	10.69011014357	Nominal RA [deg]
dec_nom	41.261826264605	Nominal Dec [deg]
roll_nom	280.19961659997	Nominal Roll [deg]
revision	2	Processing version of data
ontime	922.19531702995	Sum of GTIs [s]
livetime	145.17578770254	Livetime [s]
ontime0	922.19531702995	Sum of GTIs [s]
ontime1	922.19528710842	Sum of GTIs [s]
ontime2	922.19531702995	Sum of GTIs [s]
ontime3	922.19531702995	Sum of GTIs [s]
ontime6	922.22346556187	Sum of GTIs [s]
ontime7	922.19531702995	Sum of GTIs [s]
l2events	2716	Number of level 2 events



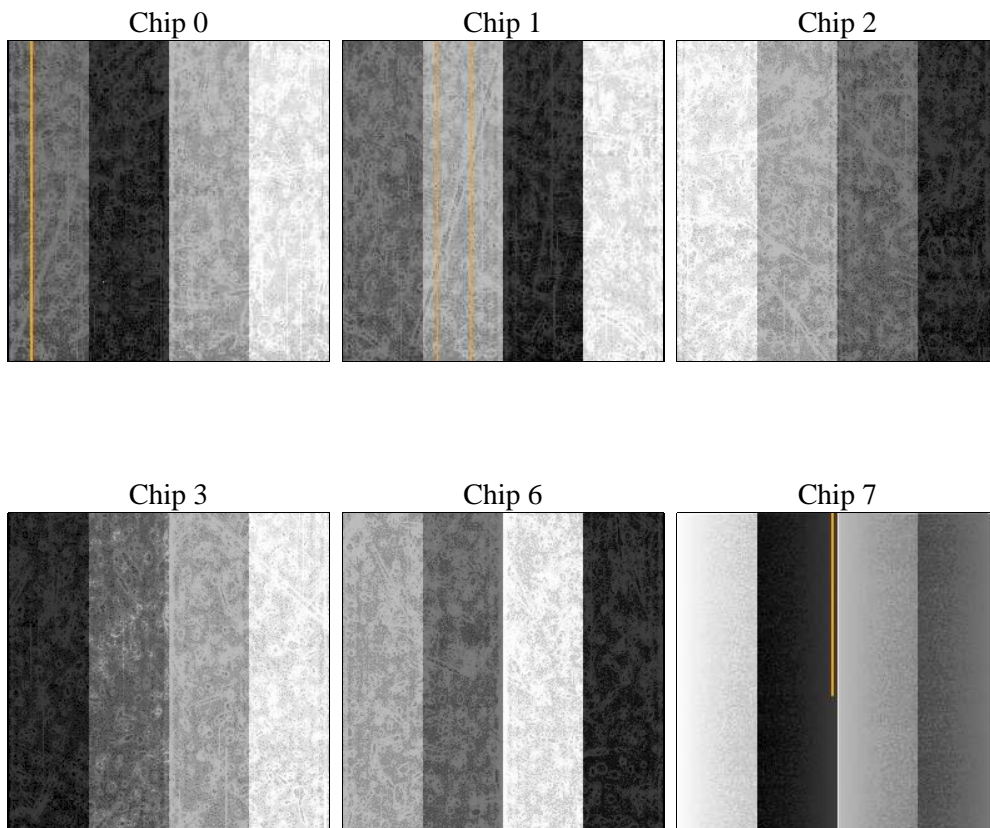
2 OBI Primary

2.1 OBI

2.1.1 Images



2.1.2 Bias



2.1.3 Parameters

obi_num	0	Obi number	sched_exp_time	5000.784000	[s] Scheduled observation exposure time
ascdsver	8.4.3	Processing system revision	ontime	922.19531702995	Sum of GTIs [s]
caldsver	4.4.8	 	ontime0	922.19531702995	Sum of GTIs [s]
date	2012-02-28T18:31:39	Date and time of file creation	ontime1	922.19528710842	Sum of GTIs [s]
revision	2	Processing version of data	ontime2	922.19531702995	Sum of GTIs [s]
			ontime3	922.19531702995	Sum of GTIs [s]
			ontime6	922.22346556187	Sum of GTIs [s]
			ontime7	922.19531702995	Sum of GTIs [s]
			l1events	17684	Number of level 1 events

2.1.4 Events

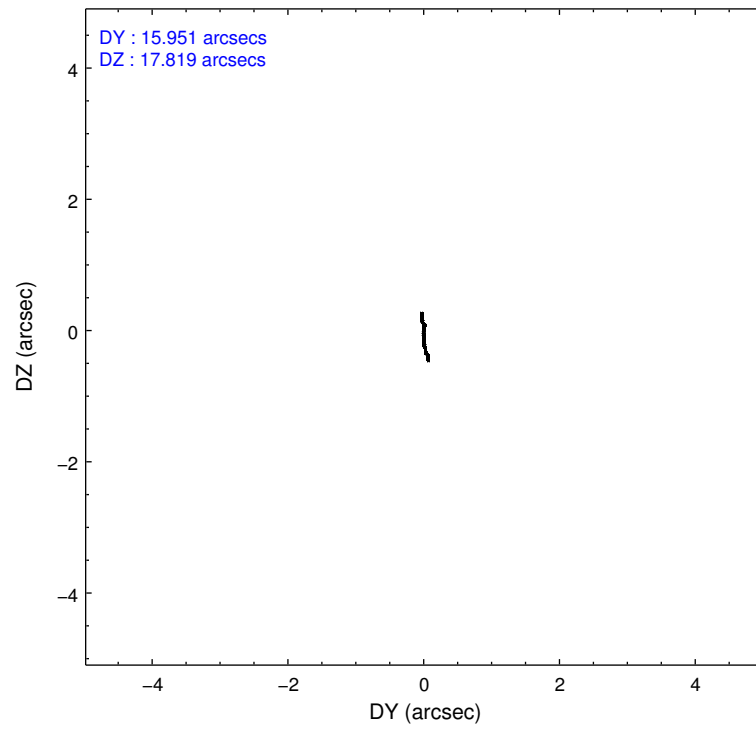
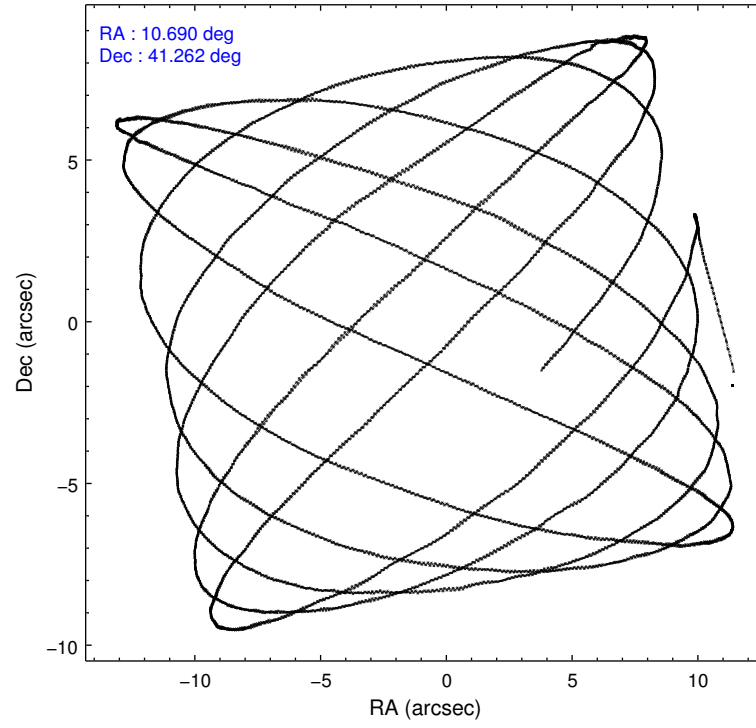
	ccd 0	ccd 1	ccd 2	ccd 3	ccd 6	ccd 7
level 1 events	2856	2773	2827	2898	3387	2943
rejected events	2517	2260	2404	2465	3038	1947
rejected %	88%	81%	85%	85%	89%	66%

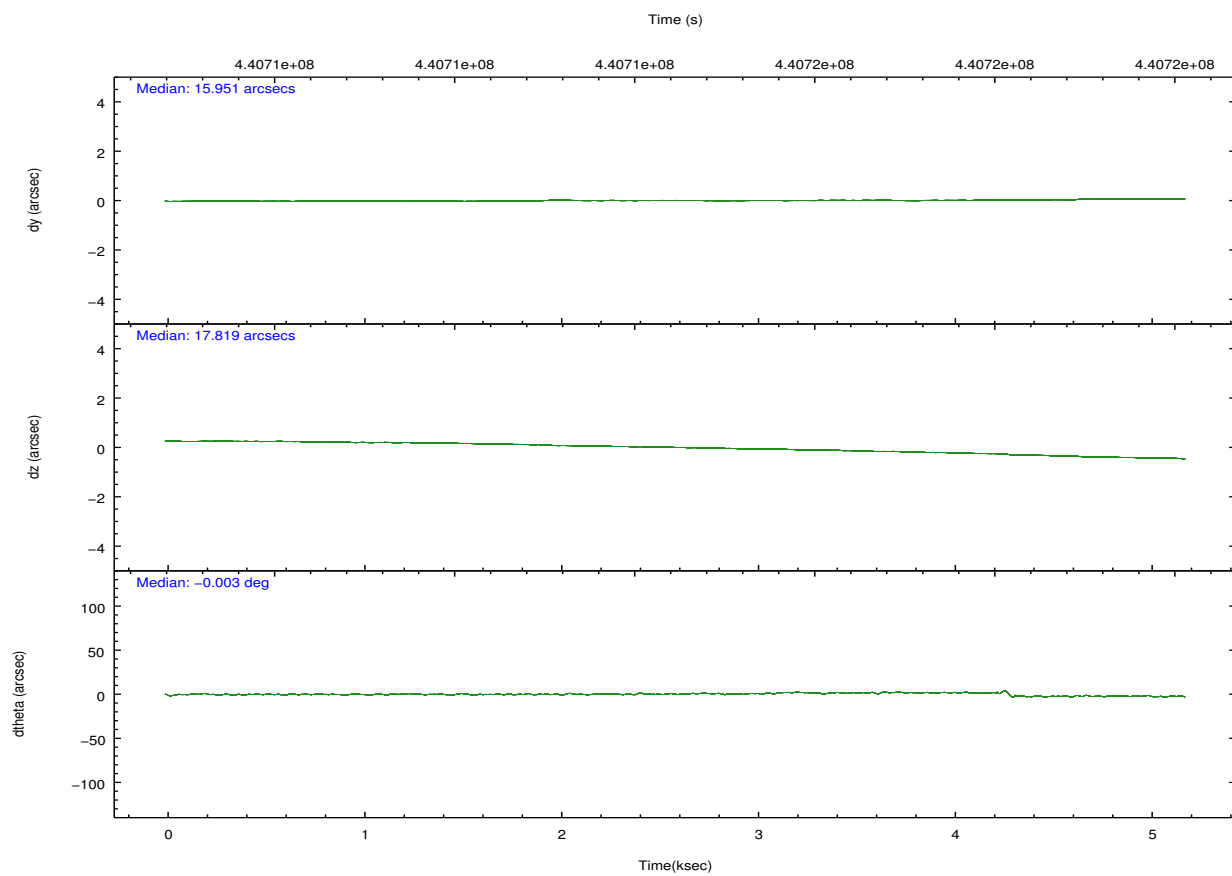
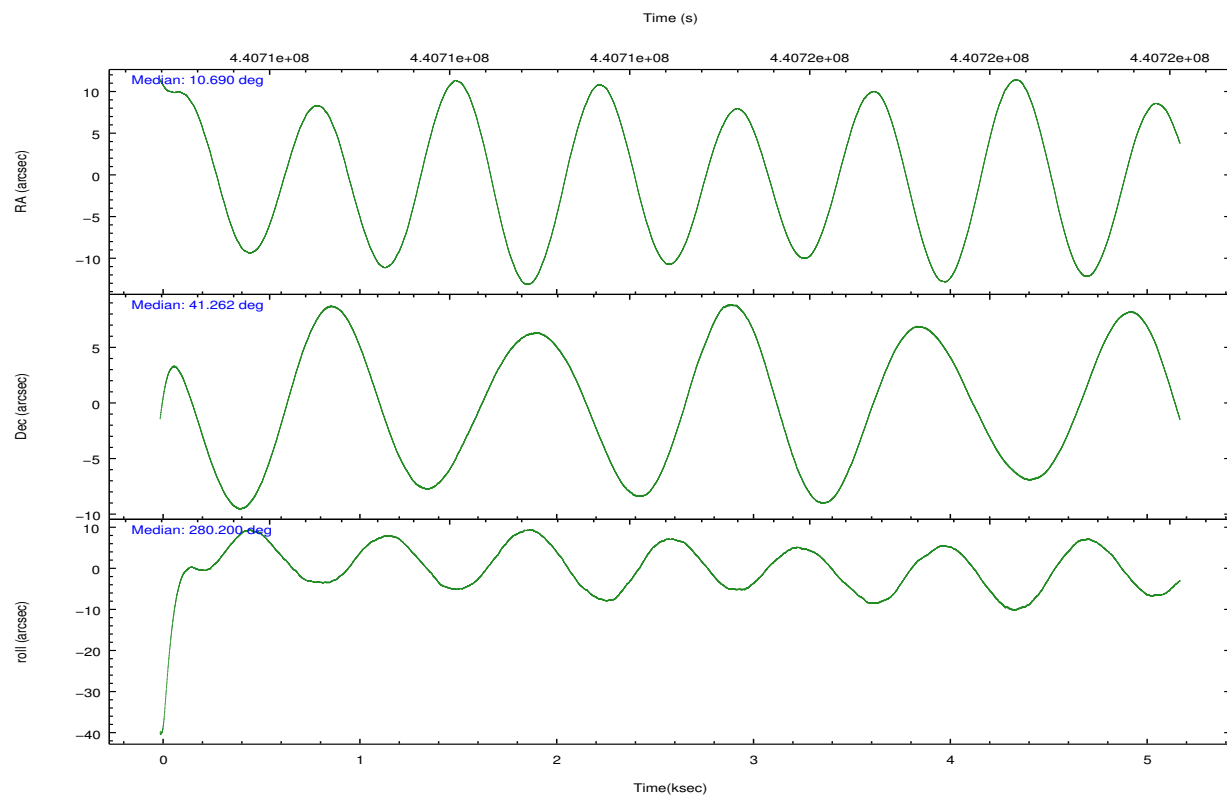
	ccd 0	ccd 1	ccd 2	ccd 3	ccd 6	ccd 7
grade 0 events	146	251	211	228	129	93
	5%	9%	7%	7%	3%	3%
grade 1 events	2	3	0	2	2	2
	0%	0%	0%	0%	0%	0%
grade 2 events	74	100	81	93	89	252
	2%	3%	2%	3%	2%	8%
grade 3 events	34	43	34	34	31	98
	1%	1%	1%	1%	0%	3%
grade 4 events	33	54	43	34	30	81
	1%	1%	1%	1%	0%	2%
grade 5 events	94	120	98	128	134	235
	3%	4%	3%	4%	3%	7%
grade 6 events	56	72	55	52	70	476
	1%	2%	1%	1%	2%	16%
grade 7 events	2417	2130	2305	2327	2902	1706
	84%	76%	81%	80%	85%	57%

2.2 Compared Parameters

Parameter	Planned	Actual	Parameter	Planned	Actual
Instrument	ACIS	ACIS	Obspar format version number	7	7
Detector	ACIS-012367	ACIS-012367	Obspar file type	PREDICTED	ACTUAL
Grating	NONE	NONE	Obspar update status	NONE	UPDATED
Data mode	FAINT	FAINT	CCD I0 on	Y	Y
Observation mode	POINTING	POINTING	CCD I1 on	Y	Y
[deg] Pointing RA	10.666227	10.69011014357017	CCD I2 on	Y	Y
[deg] Pointing Dec	41.282736	41.26182626460499	CCD I3 on	Y	Y
[deg] Pointing Roll	280.006786	280.1996165999703	CCD S0 on	N	N
[mm] SIM focus pos	-0.782348	-0.7809083437167272	CCD S1 on	N	N
[mm] SIM defocus	0	0.001439871863259334	CCD S2 on	O1	Y
[mm] SIM translation stage pos	-233.592463	-233.5874344608287	CCD S3 on	O2	Y
[mm] SIM translation stage offset	0	-0.005018542100998502	CCD S4 on	N	N
[s] Observation start time (MET)	440711813.184000	440710800.96523	CCD S5 on	N	N
Observation start date	2011-12-19T19:55:47	2011-12-19T19:40:00	Number of optional ACIS chips dropped	0	0
[s] Observation end time (MET)	440716814.184000	440717050.90306	On-chip summing requested	N	N
Observation end date	2011-12-19T21:19:08	2011-12-19T21:24:10	Subarray requested	NONE	NONE
Read mode	TIMED	TIMED	Alternating exposures requested	Y	Y
			[s] Primary exposure time	0.600000	0.6
			[s] Secondary exposure time	0.000000	3.2
			Duty cycle	5	5

2.3 Aspect



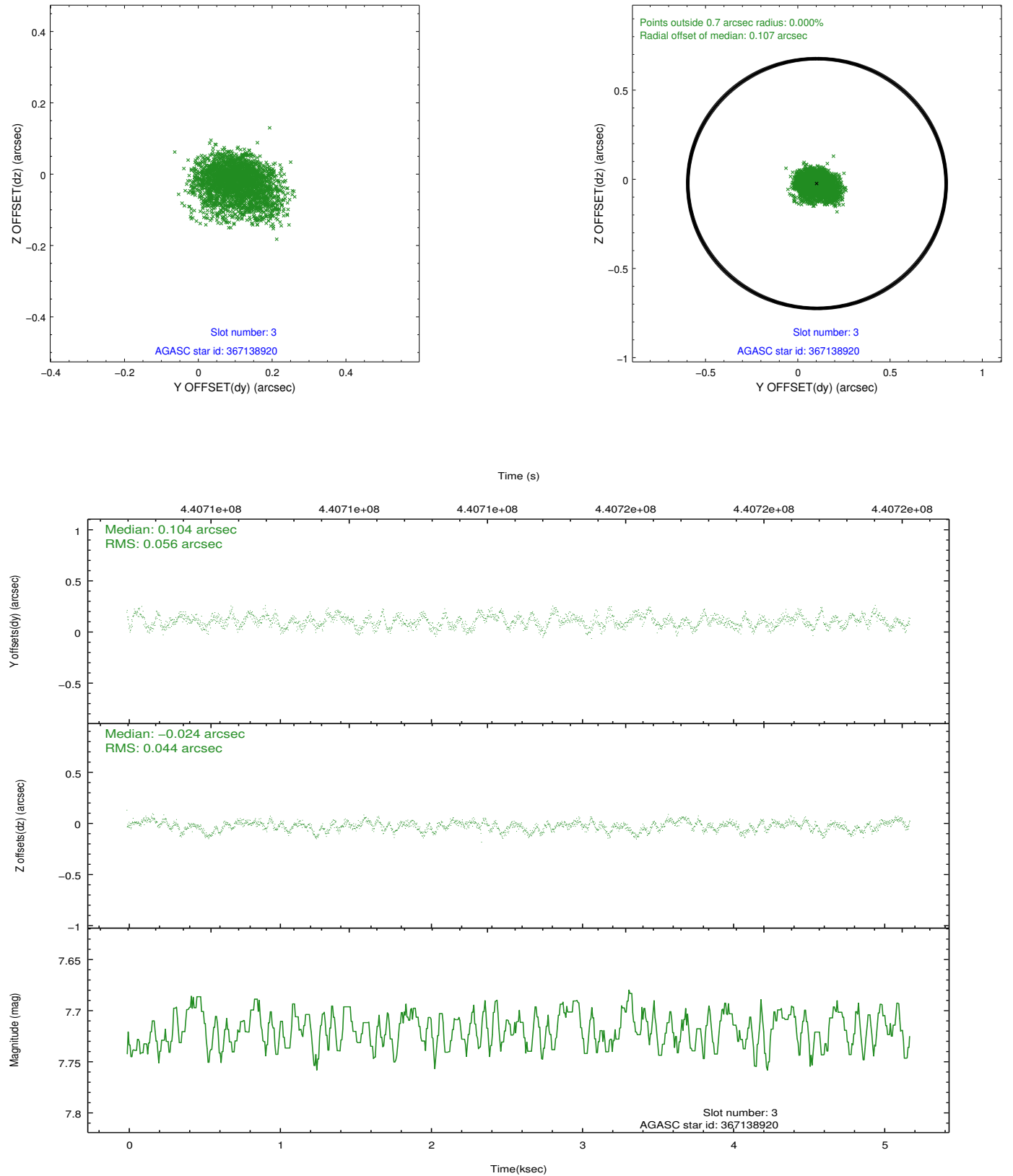


Slot Statistics

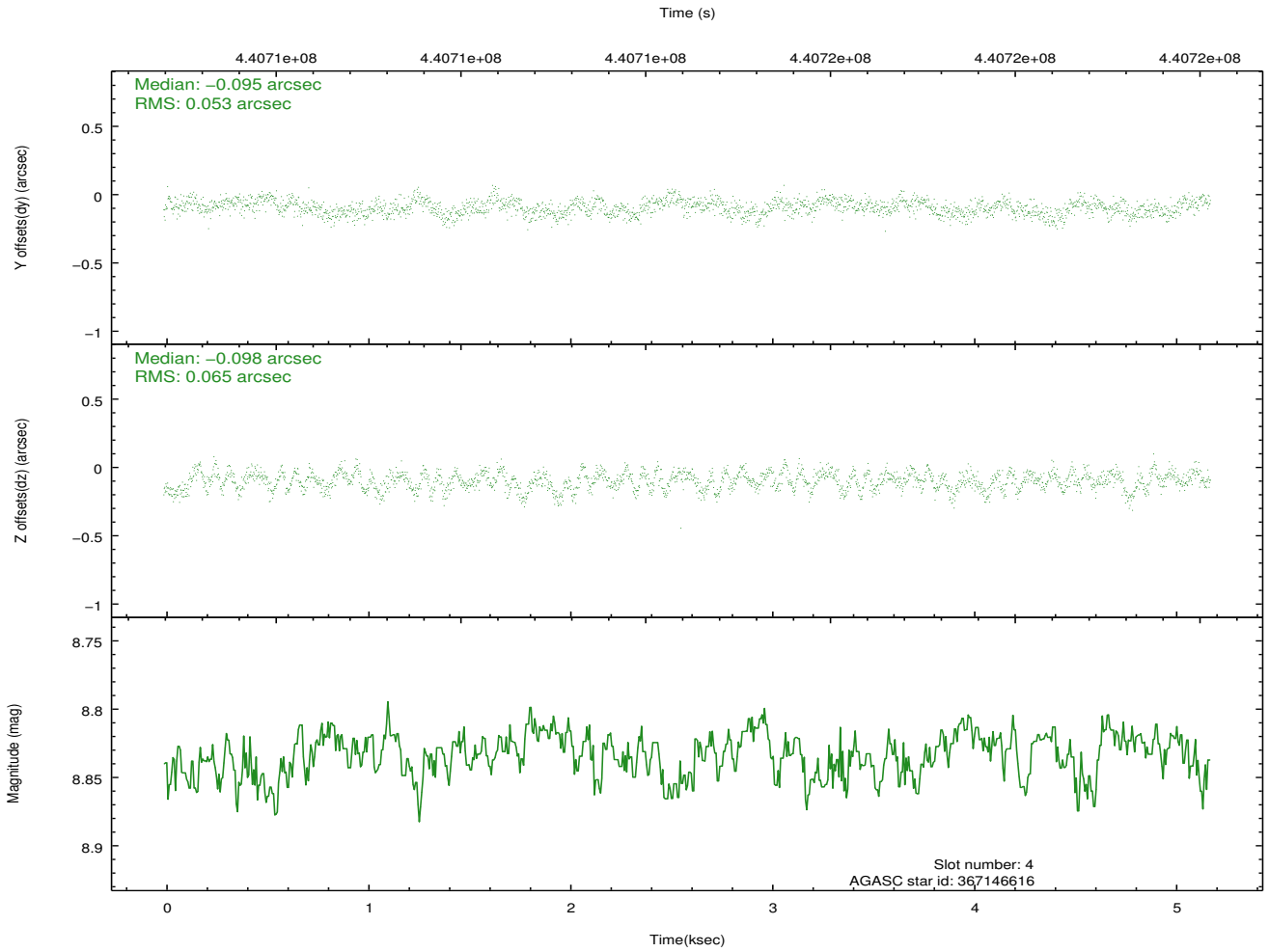
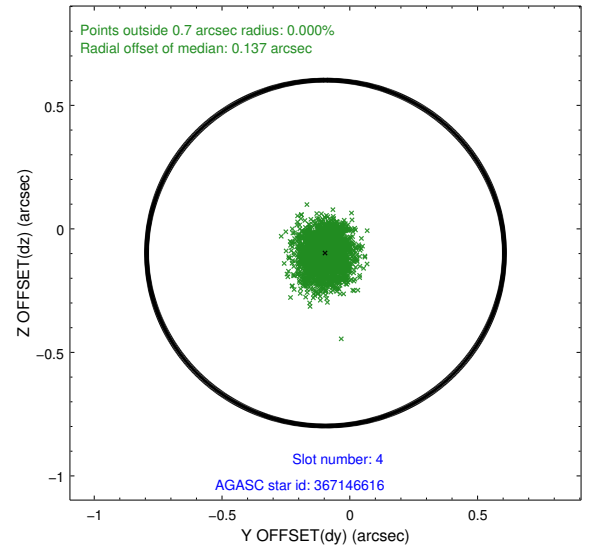
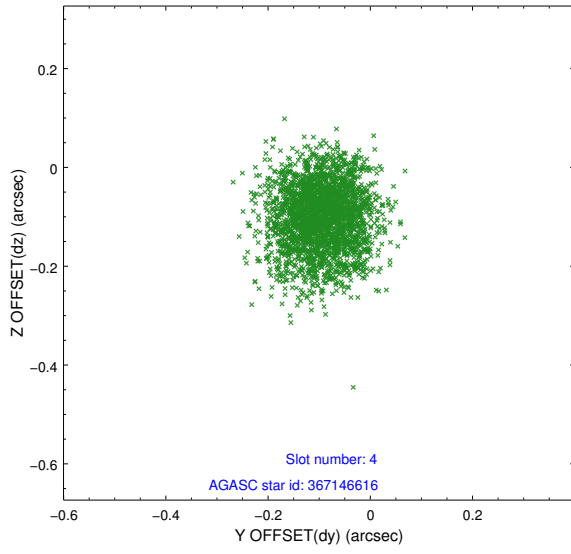
slot	status	id	mag	n_pts	med_dy	med_dz	dr1	dr2	ra	dec	mean_y	mean_z
0	FID	ACIS-I-1	7.02	1264	-0.017	-0.028	0.012	0.063	0.000000	0.000000	923.47	-841.49
1	FID	ACIS-I-4	6.97	1264	0.162	0.050	0.010	0.046	0.000000	0.000000	2144.32	1057.83
2	FID	ACIS-I-5	7.02	1264	-0.242	0.048	0.012	0.022	0.000000	0.000000	-1823.27	1056.97
3	GUIDE	367138920	7.72	2528	0.104	-0.024	0.078	0.124	11.513485	40.808909	2071.06	1979.69
4	GUIDE	367146616	8.83	2528	-0.095	-0.098	0.089	0.142	11.418645	41.190163	674.53	1951.33
5	GUIDE	367148872	7.23	2529	0.079	0.069	0.069	0.117	10.505940	40.688258	2032.30	-802.49
6	GUIDE	367663272	9.28	2513	-0.111	0.004	0.157	0.239	10.656279	41.699429	-1480.85	232.67
7	GUIDE	367674552	8.85	2527	0.021	0.058	0.086	0.139	11.016238	41.570845	-859.82	1108.86

2.4 Star Slots

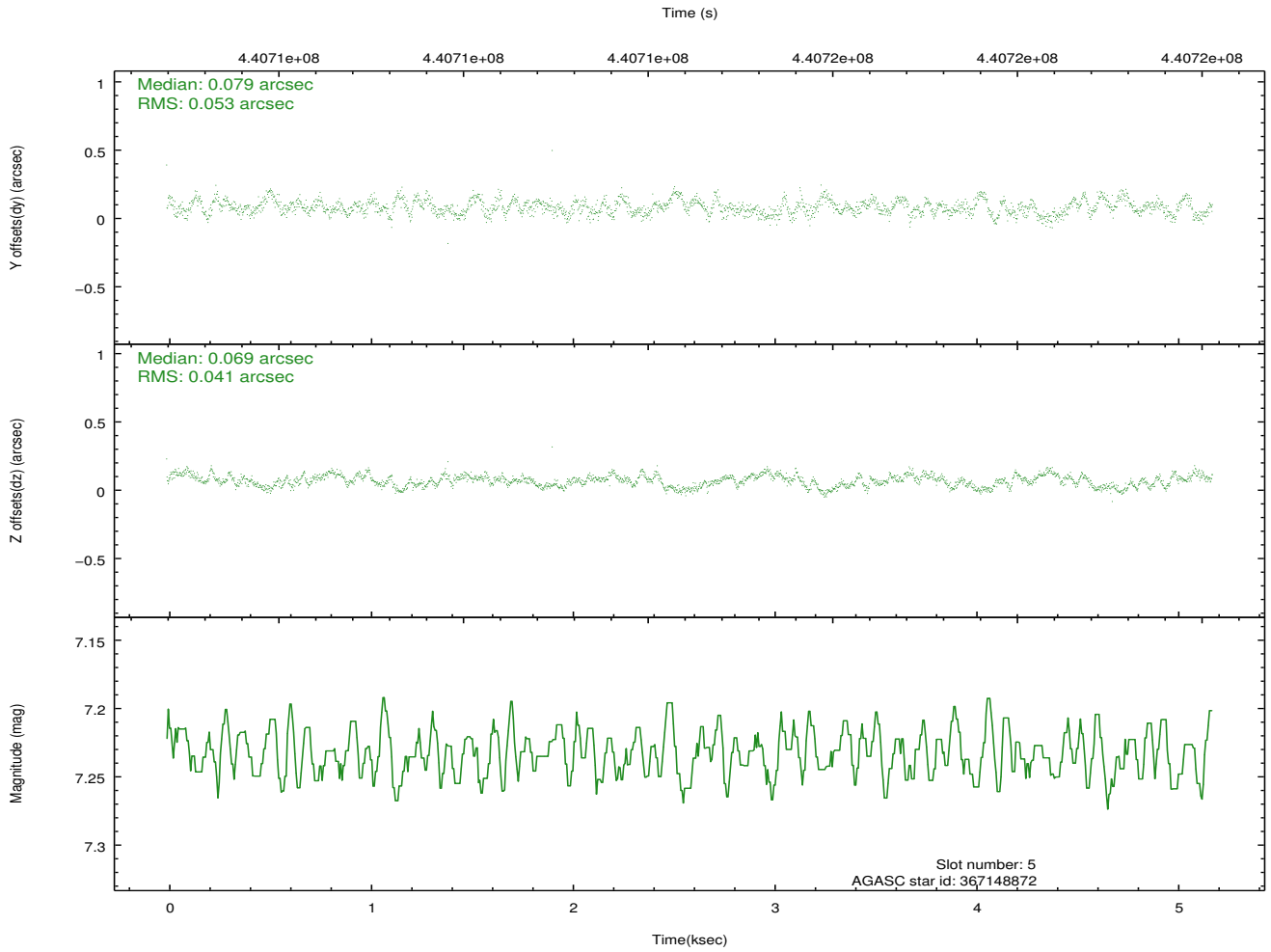
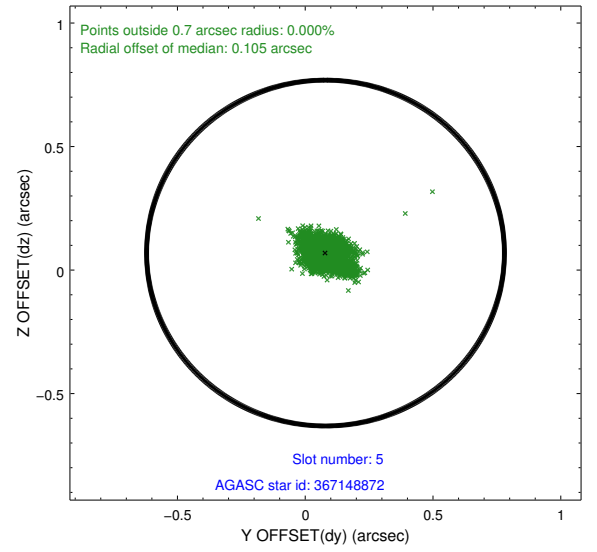
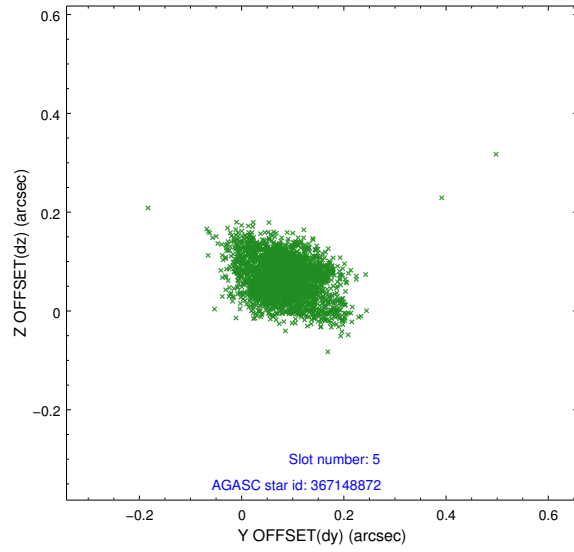
2.4.1 Slot 3



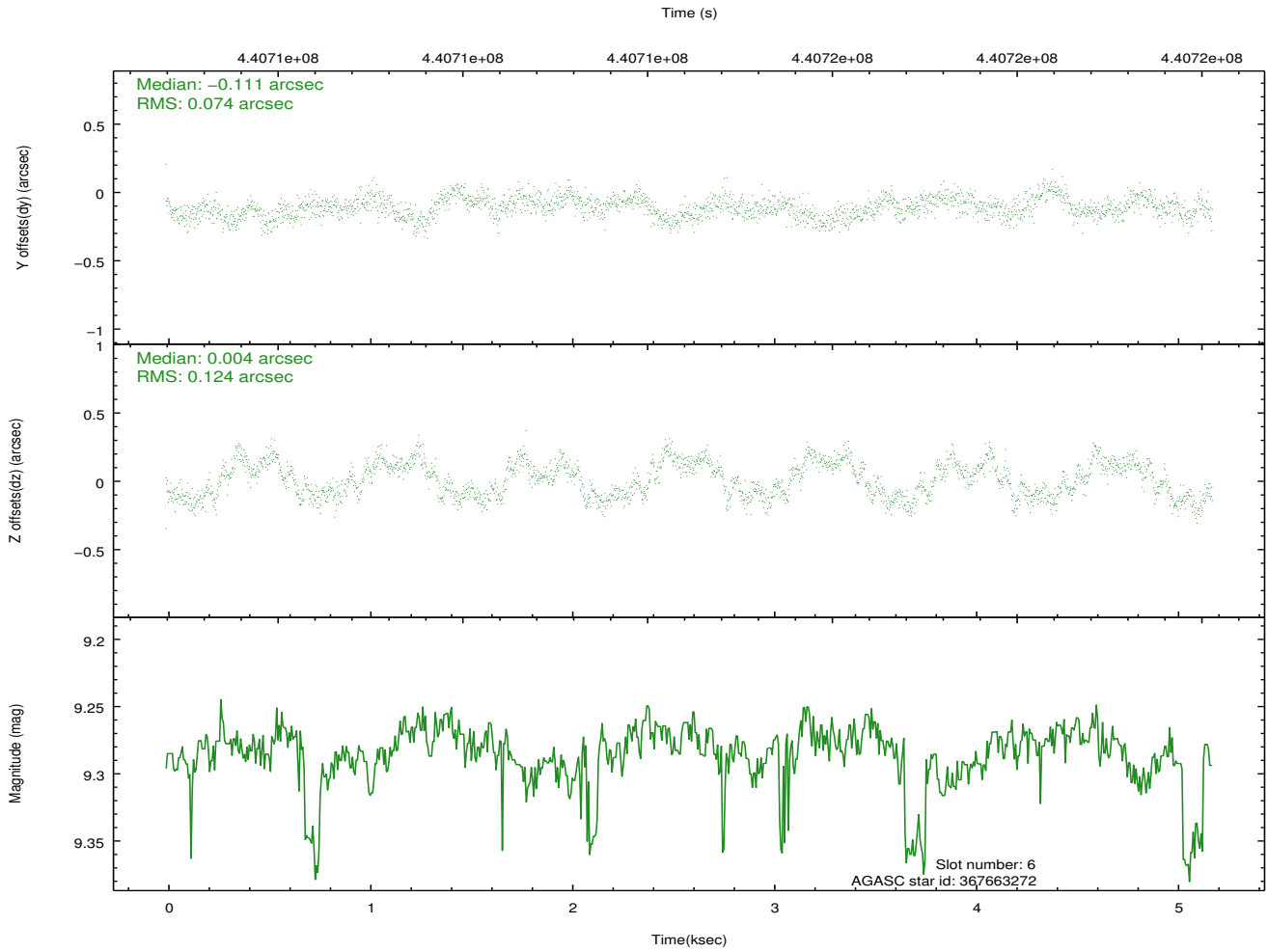
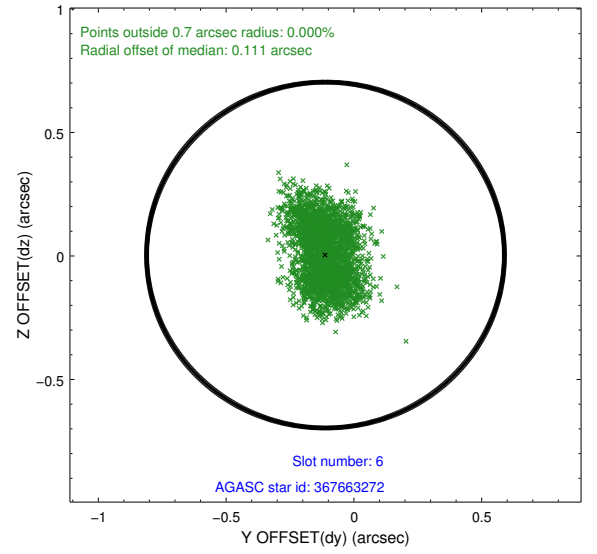
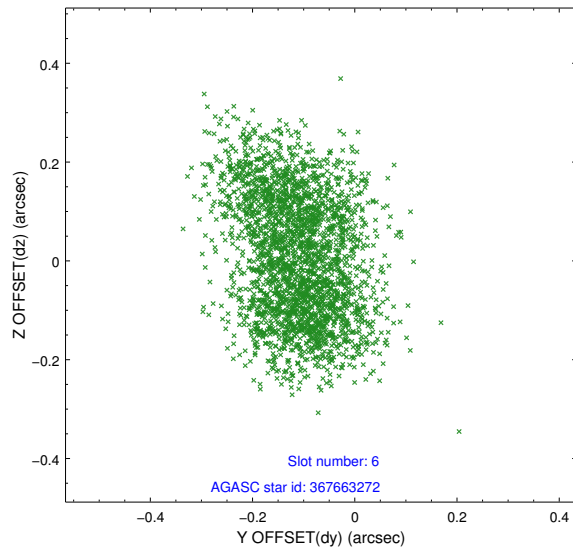
2.4.2 Slot 4



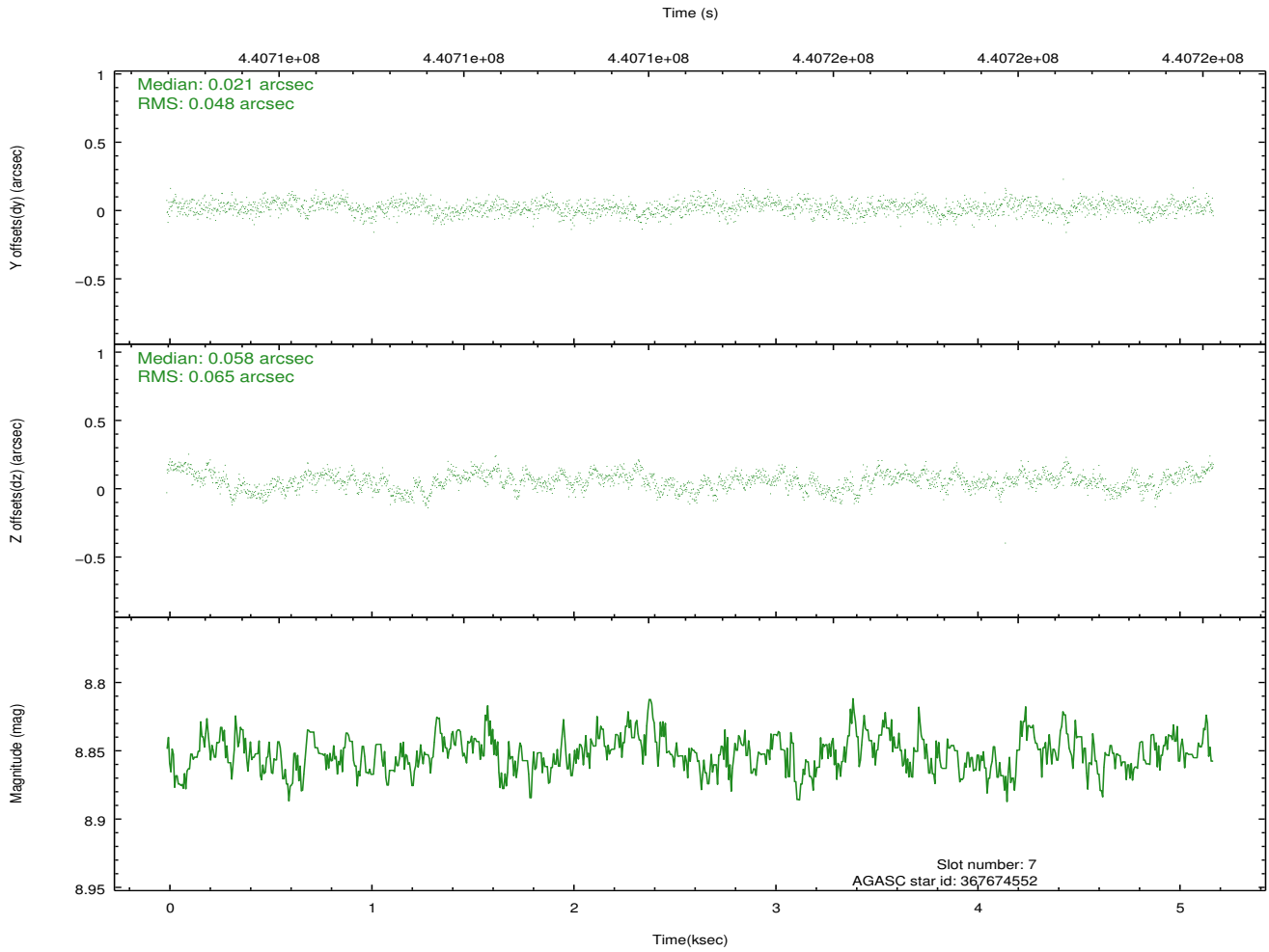
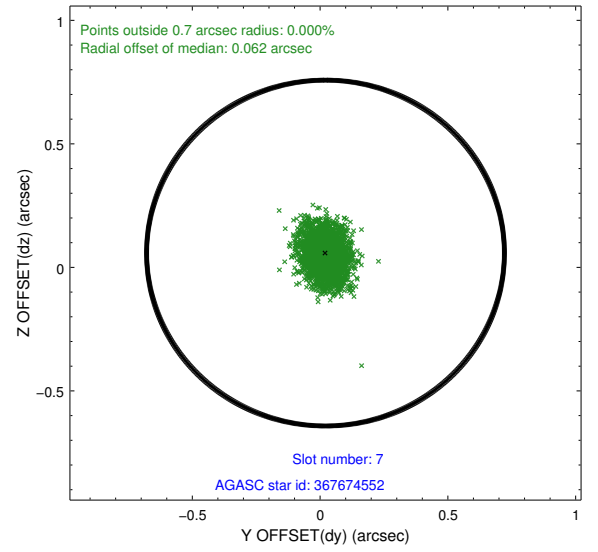
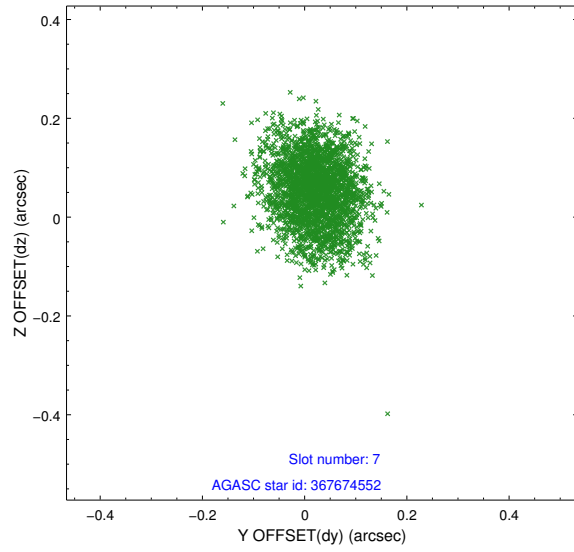
2.4.3 Slot 5



2.4.4 Slot 6

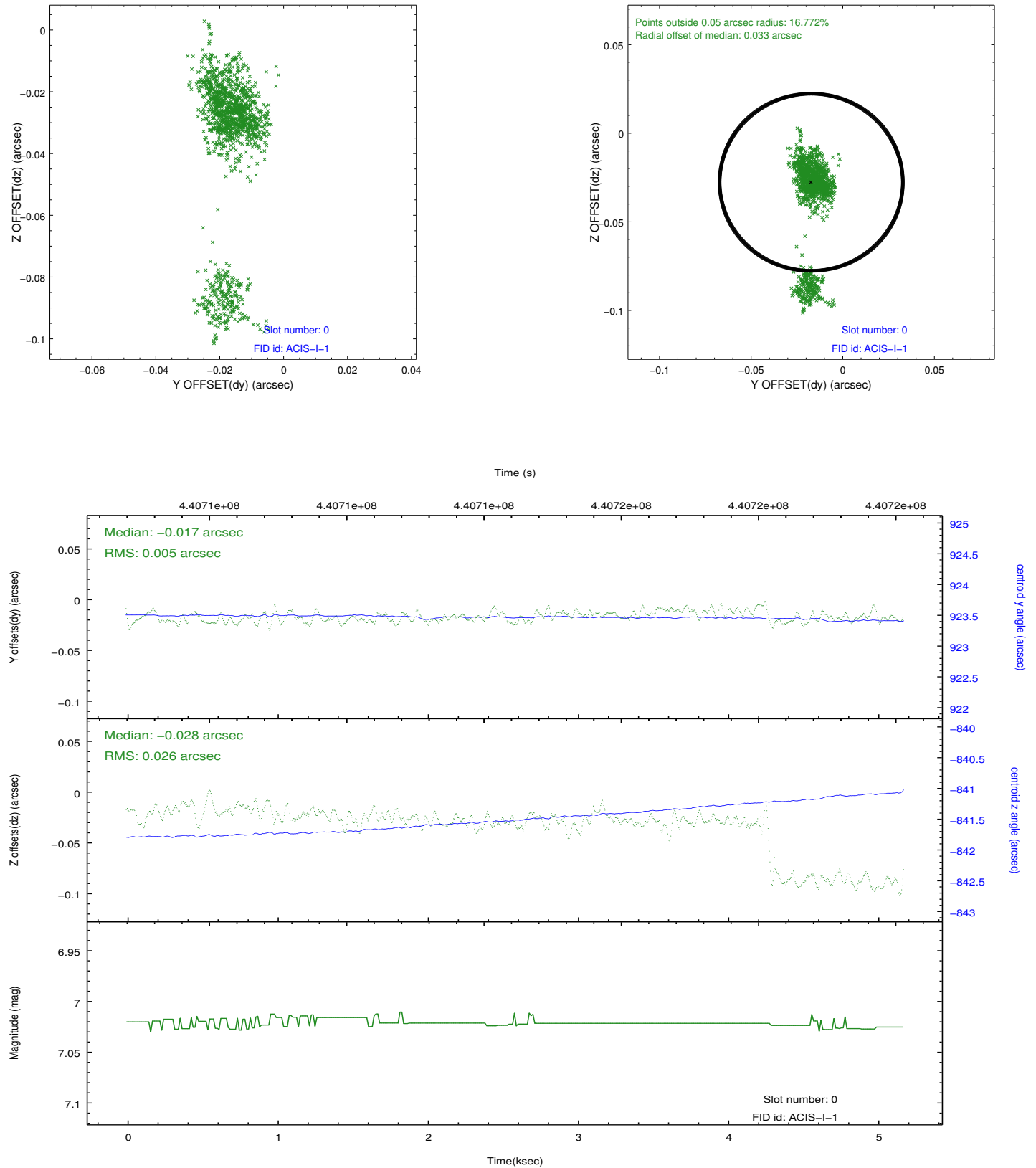


2.4.5 Slot 7

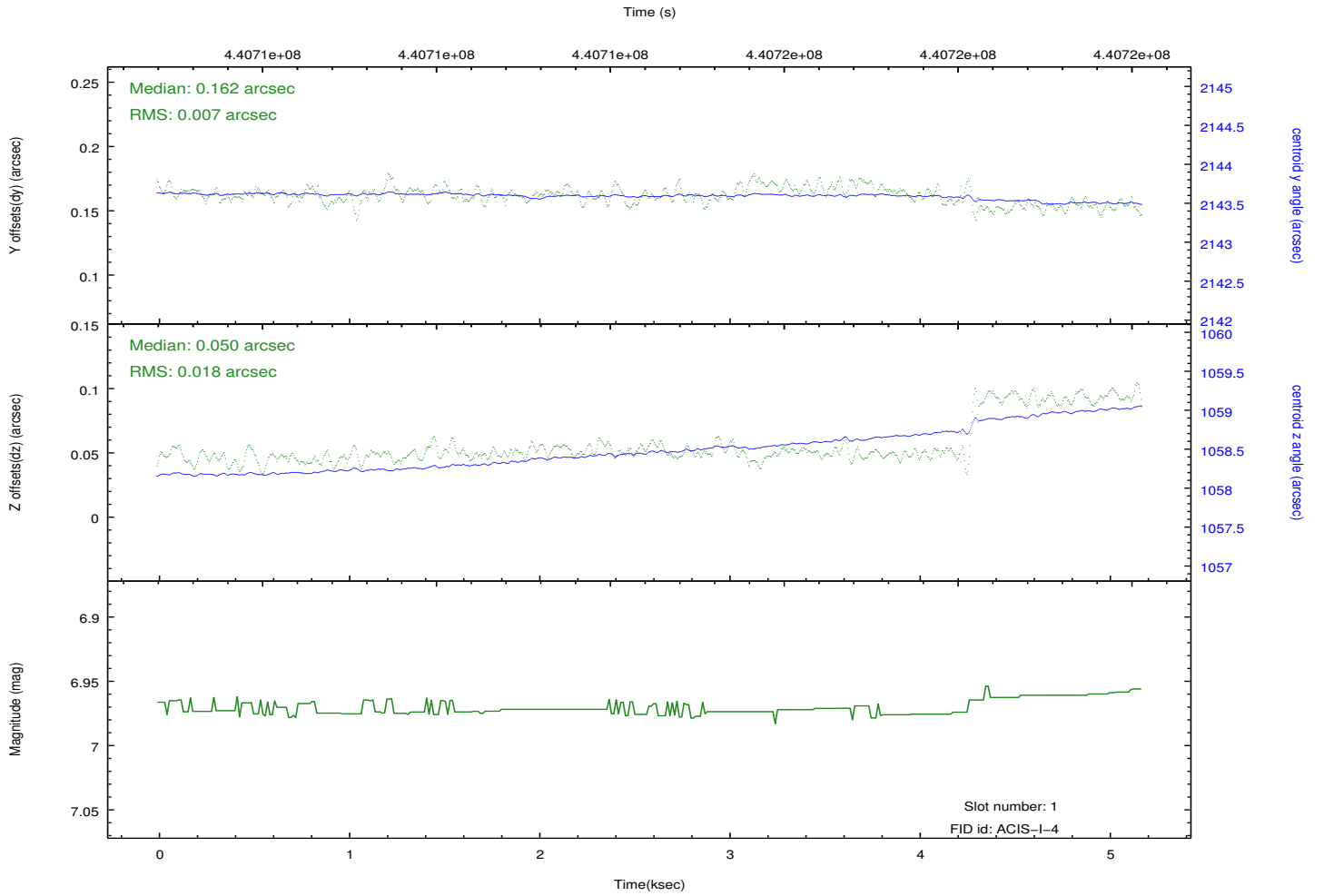
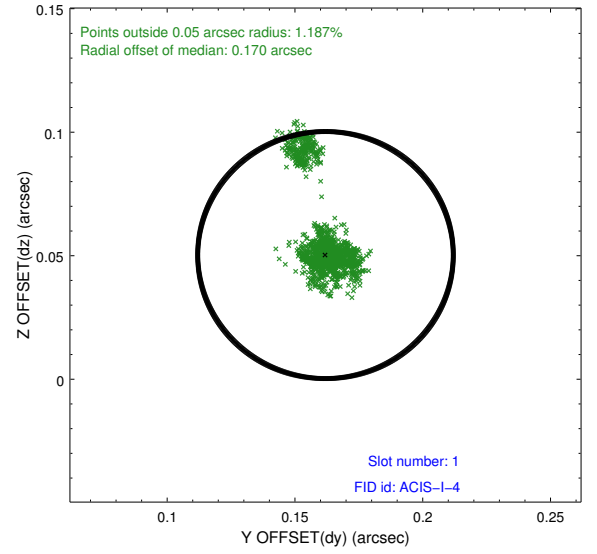
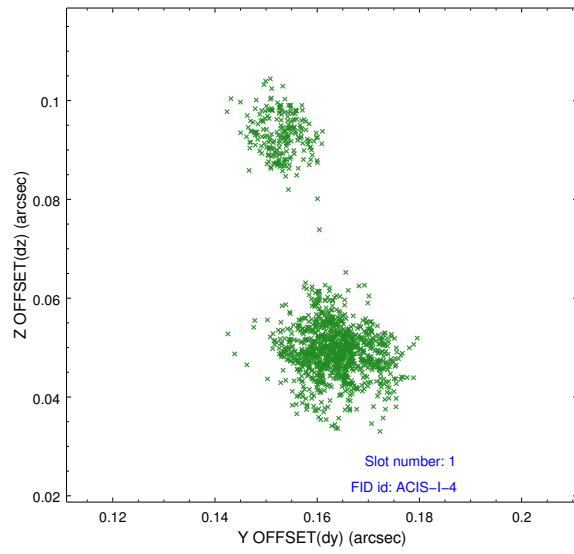


2.5 FID Slots

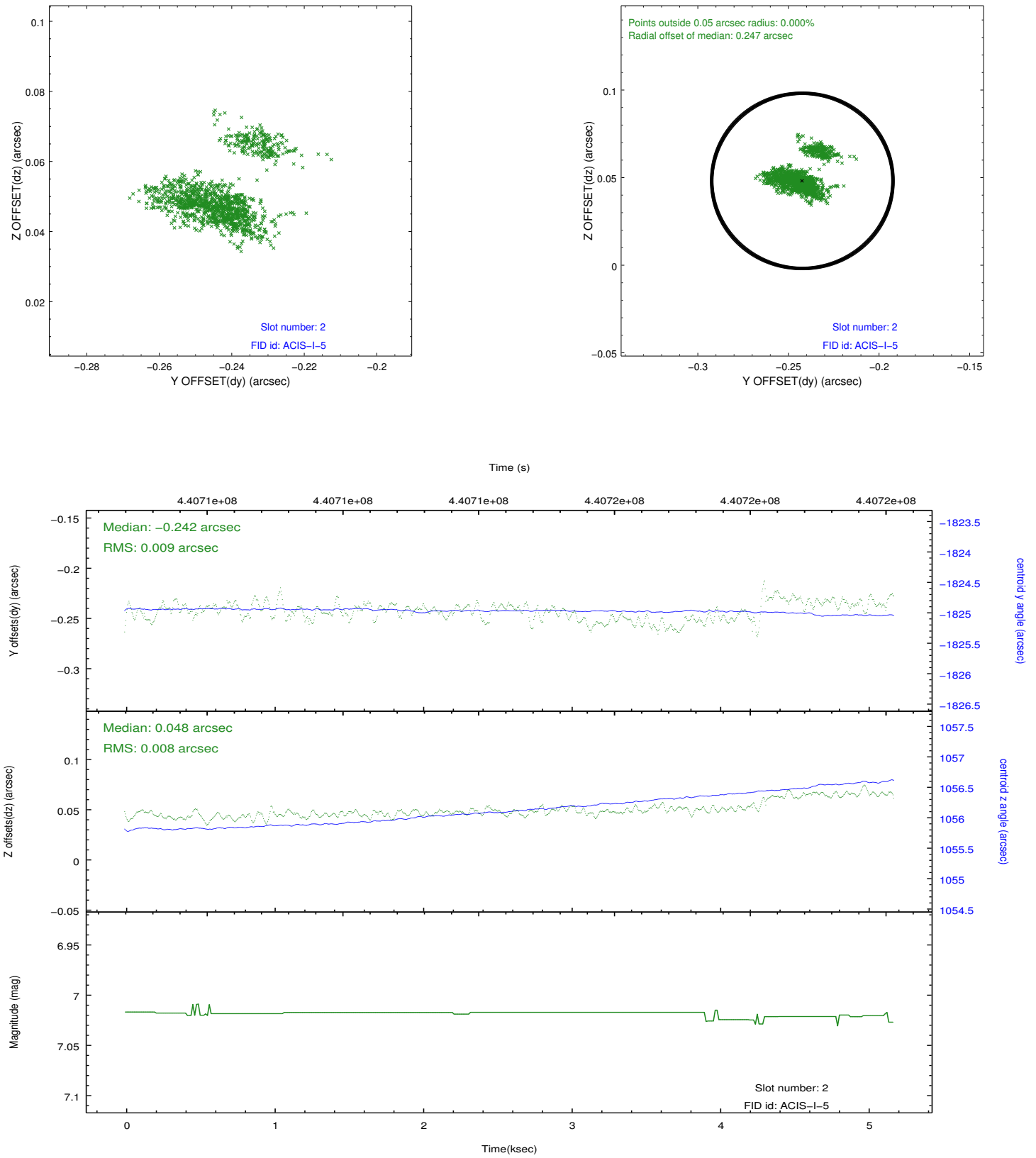
2.5.1 Slot 0



2.5.2 Slot 1



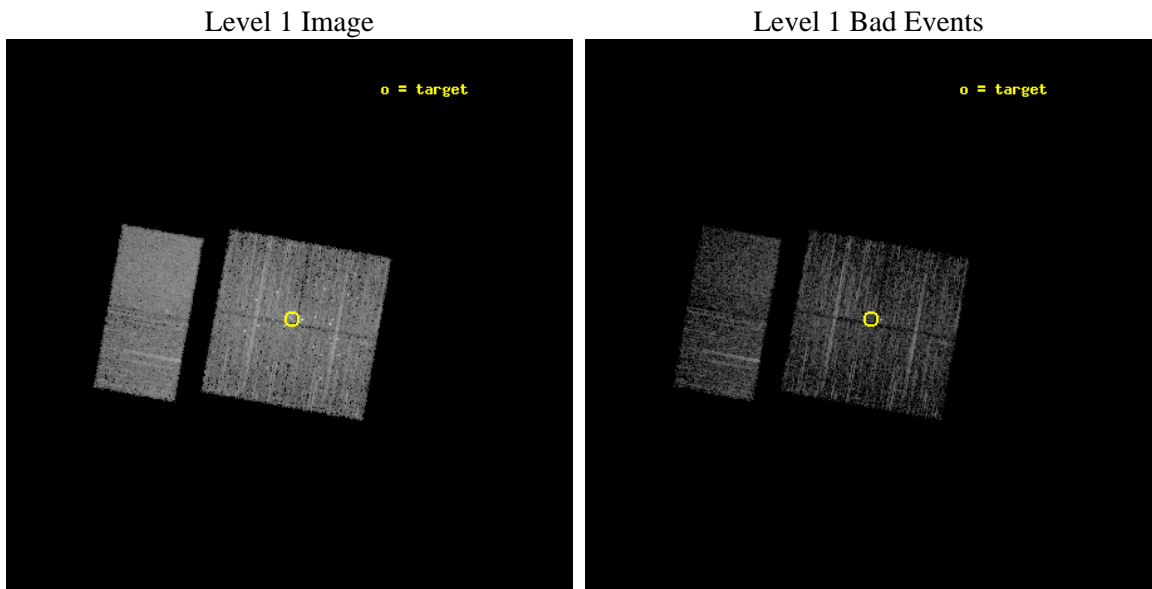
2.5.3 Slot 2



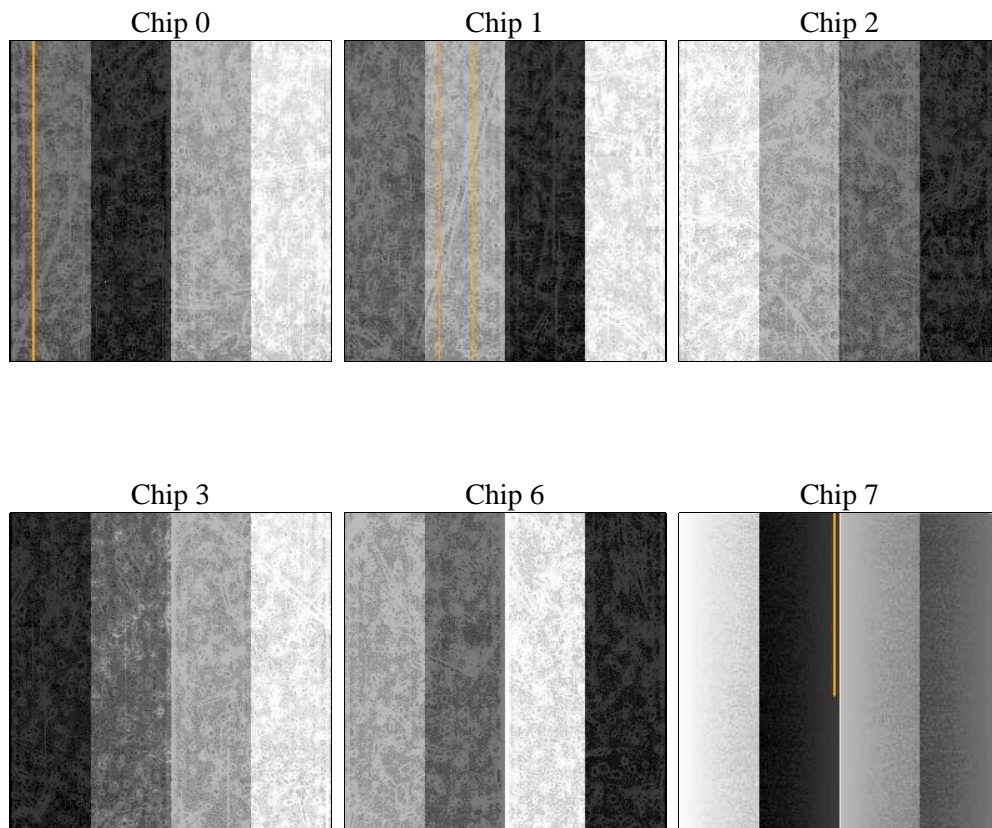
3 OBI Secondary

3.1 OBI

3.1.1 Images



3.1.2 Bias



3.1.3 Parameters

obi_num	0	Obi number	sched_exp_time	5000.784000	[s] Scheduled observation exposure time
ascdsver	8.4.3	Processing system revision	ontime	3954.047410965	Sum of GTIs [s]
caldbver	4.4.8	 	ontime0	3954.0476899743	Sum of GTIs [s]
date	2012-02-28T18:36:27	Date and time of file creation	ontime1	3954.0473417044	Sum of GTIs [s]
revision	2	Processing version of data	ontime2	3954.0475806594	Sum of GTIs [s]
			ontime3	3954.047410965	Sum of GTIs [s]
			ontime6	3954.0474607944	Sum of GTIs [s]
			ontime7	3954.0473412275	Sum of GTIs [s]
			l1events	179631	Number of level 1 events

3.1.4 Events

	ccd 0	ccd 1	ccd 2	ccd 3	ccd 6	ccd 7		ccd 0	ccd 1	ccd 2	ccd 3	ccd 6	ccd 7
level 1 events	25805	28783	27832	32031	28118	37062	grade 0 events	3546	4989	3862	5047	2513	1798
rejected events	19746	20352	21470	24088	23103	18395		13%	17%	13%	15%	8%	4%
rejected %	76%	70%	77%	75%	82%	49%	grade 1 events	26	147	44	80	15	42
								0%	0%	0%	0%	0%	0%
							grade 2 events	1019	1460	998	1095	918	3708
								3%	5%	3%	3%	3%	10%
							grade 3 events	432	515	420	513	380	1530
								1%	1%	1%	1%	1%	4%
							grade 4 events	374	541	428	523	391	1603
								1%	1%	1%	1%	1%	4%
							grade 5 events	1119	1316	1045	1269	1300	3418
								4%	4%	3%	3%	4%	9%
							grade 6 events	698	937	672	779	817	10058
								2%	3%	2%	2%	2%	27%
							grade 7 events	18591	18878	20363	22725	21784	14905
								72%	65%	73%	70%	77%	40%

A Summary

A.1 Status

V&V Scientist	Beth Sundheim
V&V Date (YYYY-MM-DD)	2012.02.29
V&V Edition	1
V&V Disposition and Status	OK
V&V Charge Time	4.87624272888896

A.2 Comments

Joint proposal with HST.