

V&V Reference Report

L2 ASCDS Version : 8.4.5

Observation 15265 - L2 Version 1
Chandra X-Ray Center

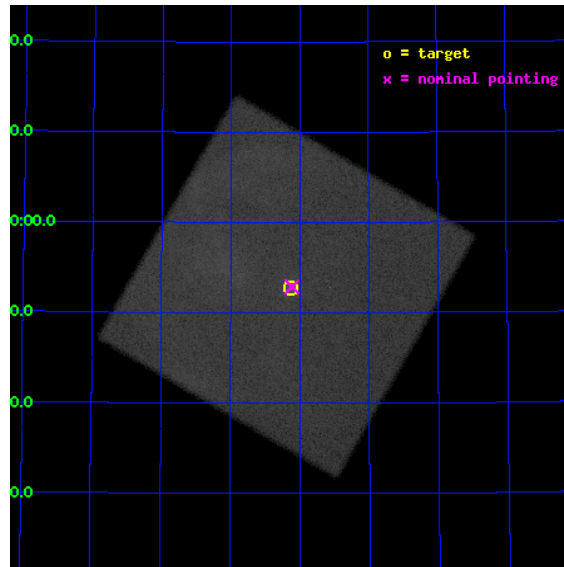
L2 Processing Date : Aug 22 2012

Contents

1	Front	2
2	OBI	3
2.1	OBI	3
2.1.1	Images	3
2.1.2	Parameters	4
2.1.3	Events	4
2.2	Compared Parameters	5
2.3	Aspect	6
2.4	Star Slots	9
2.4.1	Slot 3	9
2.4.2	Slot 4	10
2.4.3	Slot 5	11
2.4.4	Slot 6	12
2.4.5	Slot 7	13
2.5	FID Slots	14
2.5.1	Slot 0	14
2.5.2	Slot 1	15
2.5.3	Slot 2	16
A	Summary	17
A.1	Status	17
A.2	Comments	17

1 Front

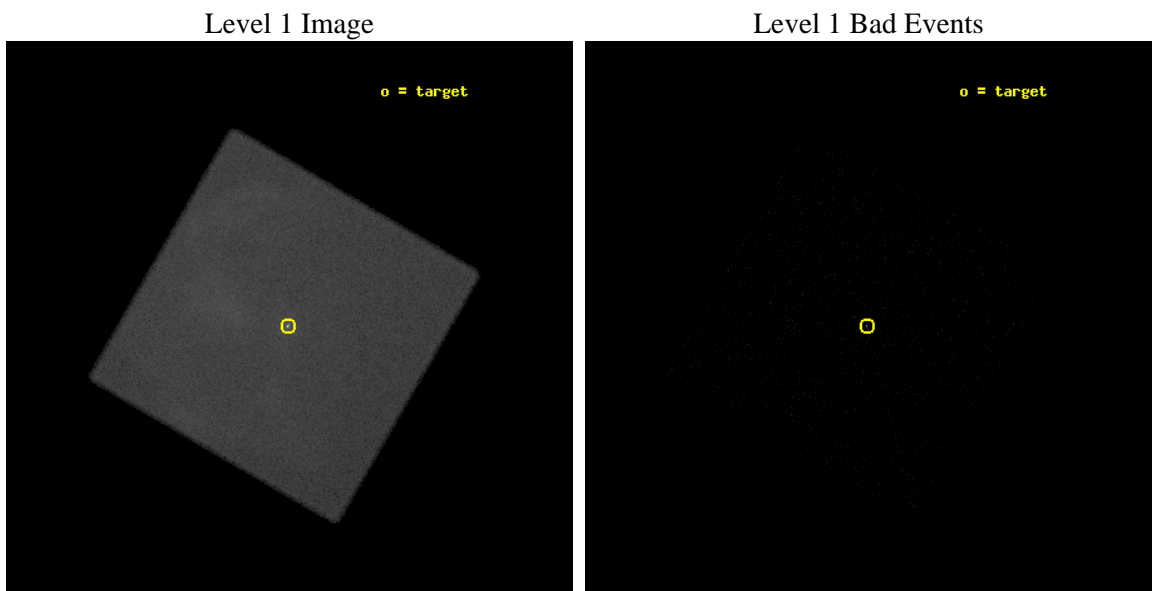
seq_num	502020	Sequence number
obs_id	15265	Observation id
title	1E 2259+586: Detecting Particle Outflow from an Active Magnetar	Pr
observer	Dr. Victoria Kaspi	Principal investigator
object	1E 2259+586	Source name
ra_targ	345.284583	Observer's specified target RA [deg]
dec_targ	58.879028	Observer's specified target Dec [deg]
ra_nom	345.27811420257	Nominal RA [deg]
dec_nom	58.881593734059	Nominal Dec [deg]
roll_nom	165.1254491901	Nominal Roll [deg]
revision	1	Processing version of data
ontime	10124.181791425	[s]
livetime	10035.529591719	Ontime multiplied by DTCOR
l2events	716325	Number of level 2 events



2 OBI

2.1 OBI

2.1.1 Images



2.1.2 Parameters

obi_num	0	Obi number	sched_exp_time	10000.472000	[s] Scheduled observation exposure time
ascdsver	8.4.5	Processing system revision	ontime	10124.181791425	[s]
caldsver	4.5.1.1	 	l1events	1078286	Number of level 1 events
date	2012-08-22T06:20:52	Date and time of file creation			
revision	1	Processing version of data			

2.1.3 Events

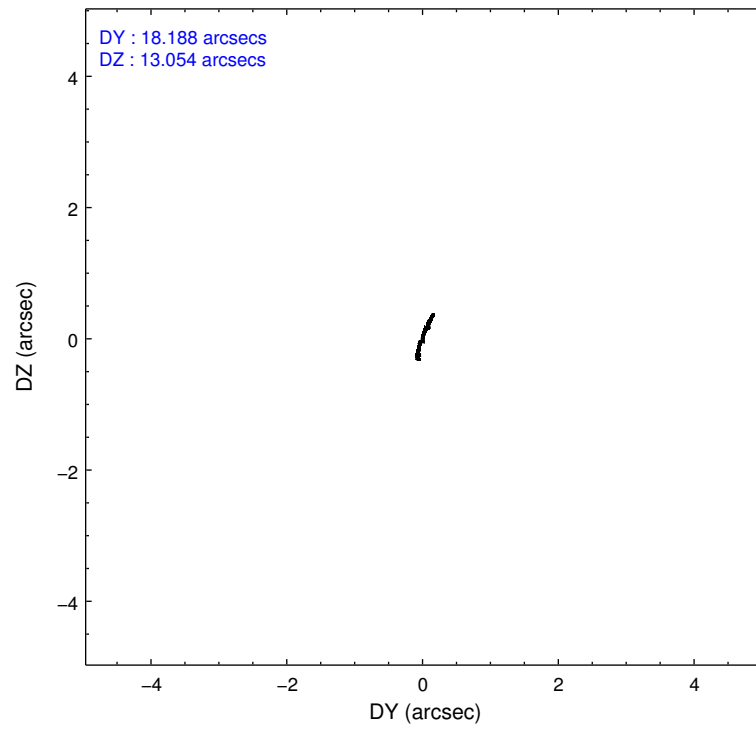
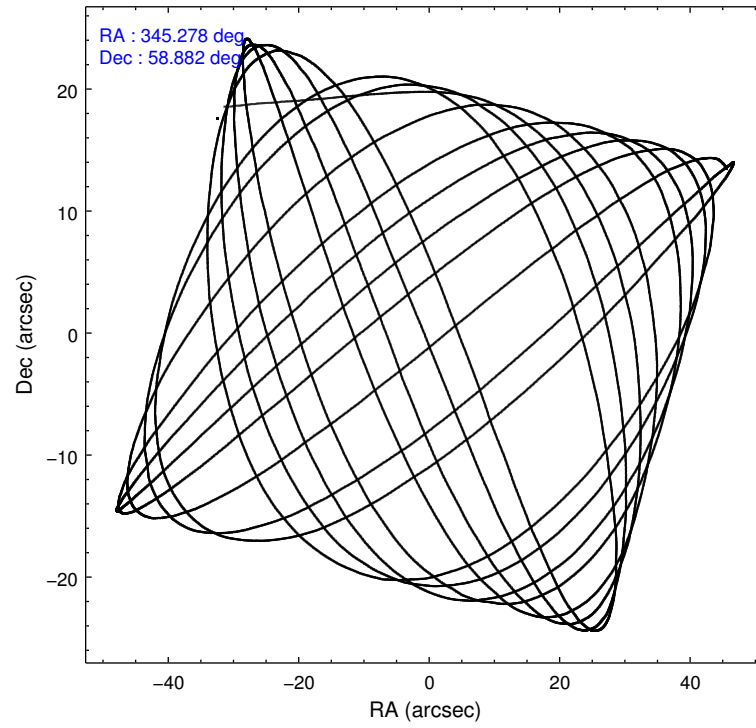
Level 1 Events

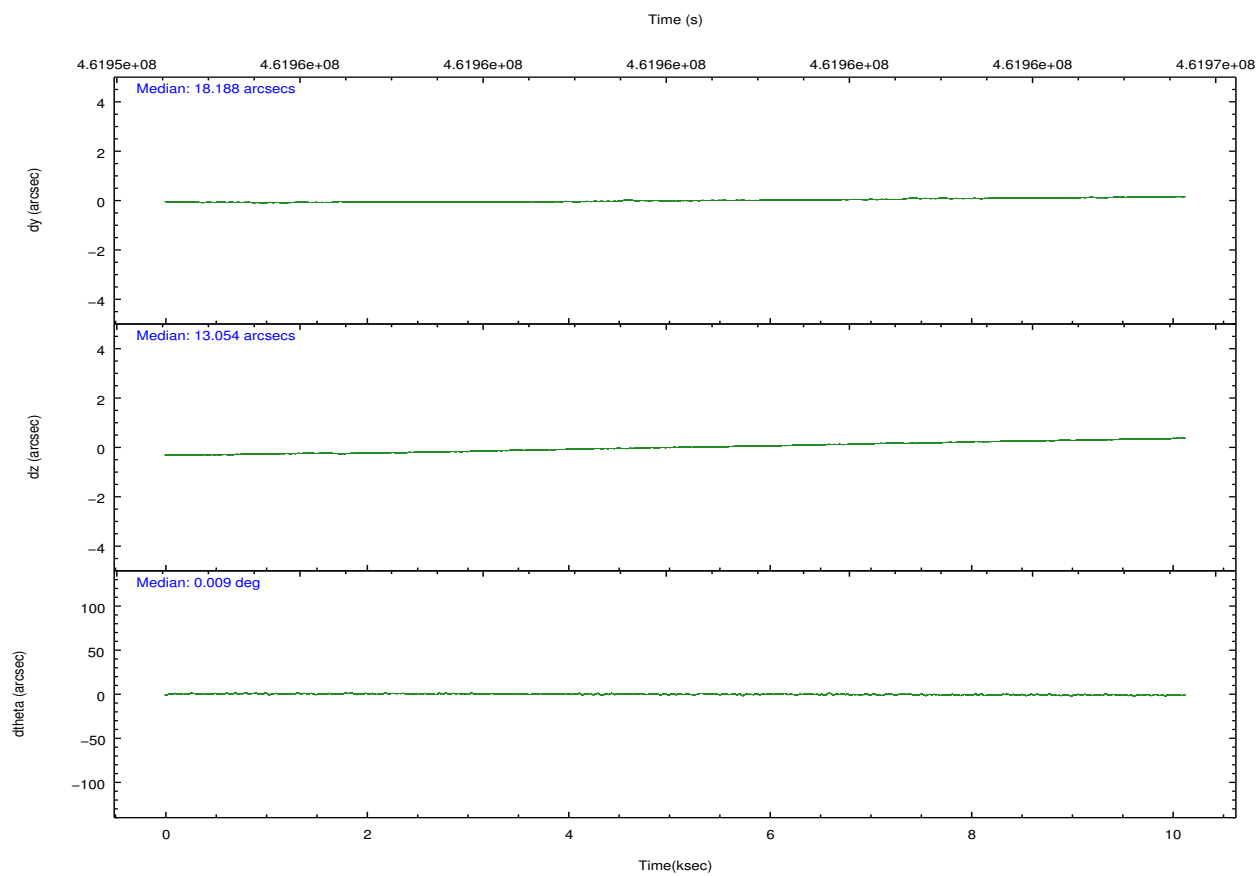
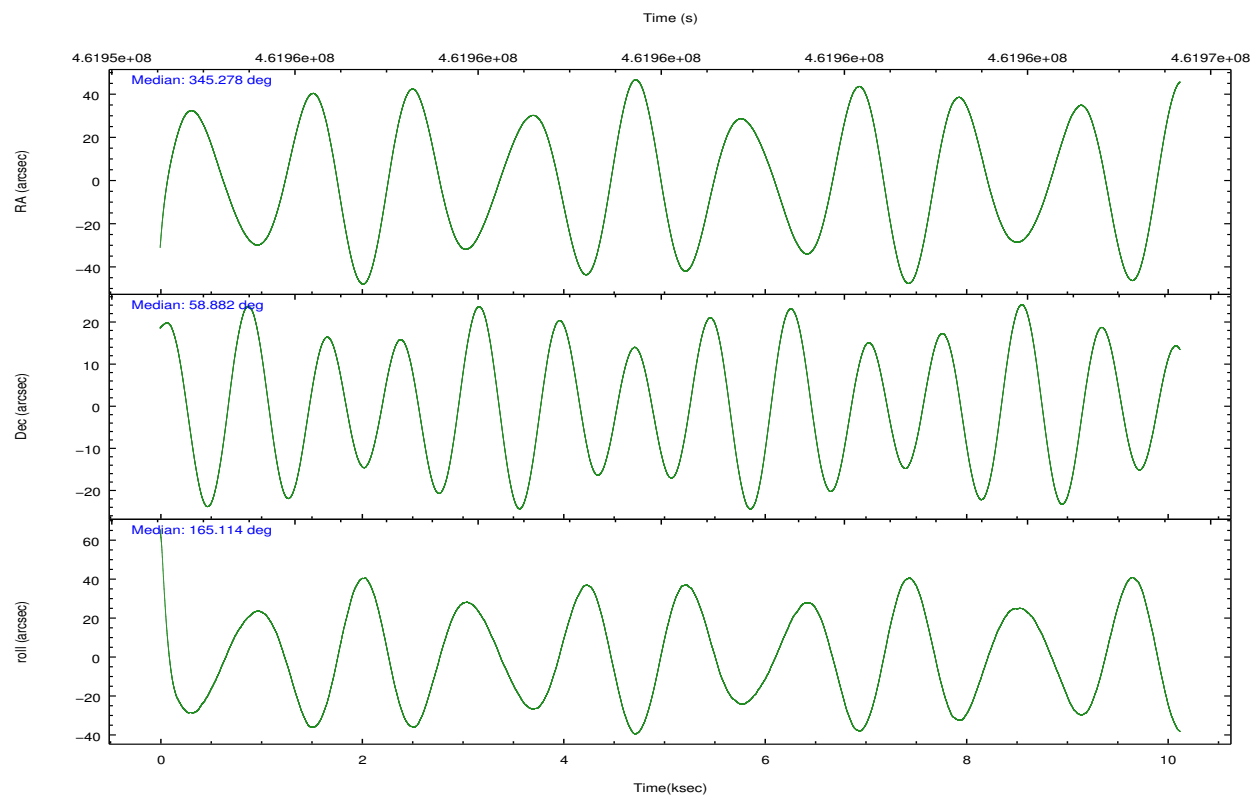
	segment 0
level 1 events	1078286
rejected events	134267
rejected %	12%

2.2 Compared Parameters

Parameter	Planned	Actual	Parameter	Planned	Actual
Instrument	HRC	HRC	Obspar format version number	7	7
Detector	HRC-I	HRC-I	Obspar file type	PREDICTED	ACTUAL
Grating	NONE	NONE	Obspar update status	NONE	UPDATED
Data mode	OBSERVING	OBSERVING			
Observation mode	POINTING	POINTING			
[deg] Pointing RA	345.328493	345.278114202568			
[deg] Pointing Dec	58.889227	58.881593734059			
[deg] Pointing Roll	165.177749	165.1254491900984			
[mm] SIM focus pos	-1.040293	-1.038866356238299			
[mm] SIM defocus	0	0.001426264420575141			
[mm] SIM translation stage pos	126.985494	126.9829799899862			
[mm] SIM translation stage offset	0	0.002508901615314585			
[s] Observation start time (MET)	461955156.184000	461953626.76479			
Observation start date	2012-08-21T16:51:29	2012-08-21T16:27:06			
[s] Observation end time (MET)	461965156.184000	461965293.31541			
Observation end date	2012-08-21T19:38:09	2012-08-21T19:41:33			

2.3 Aspect



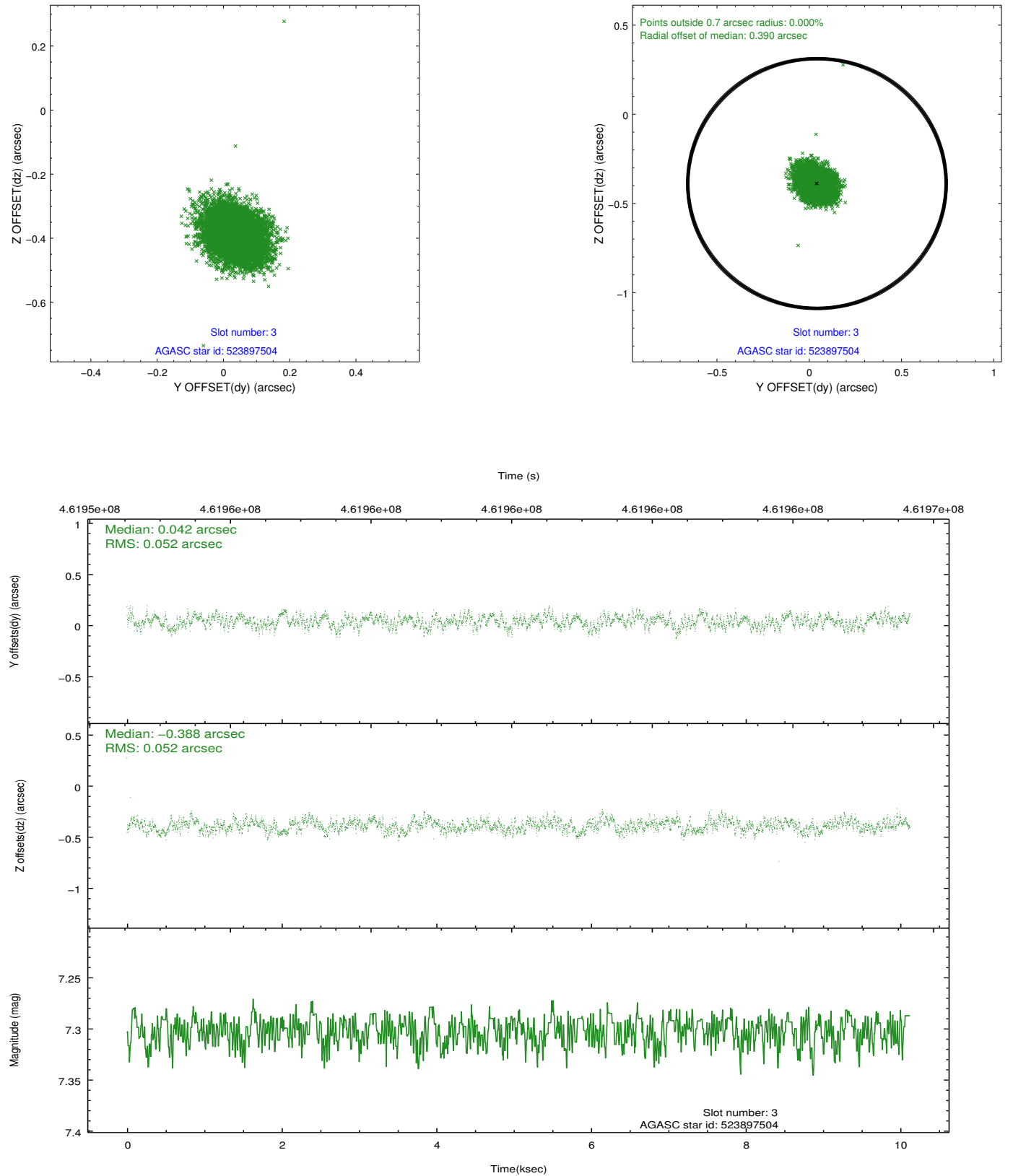


Slot Statistics

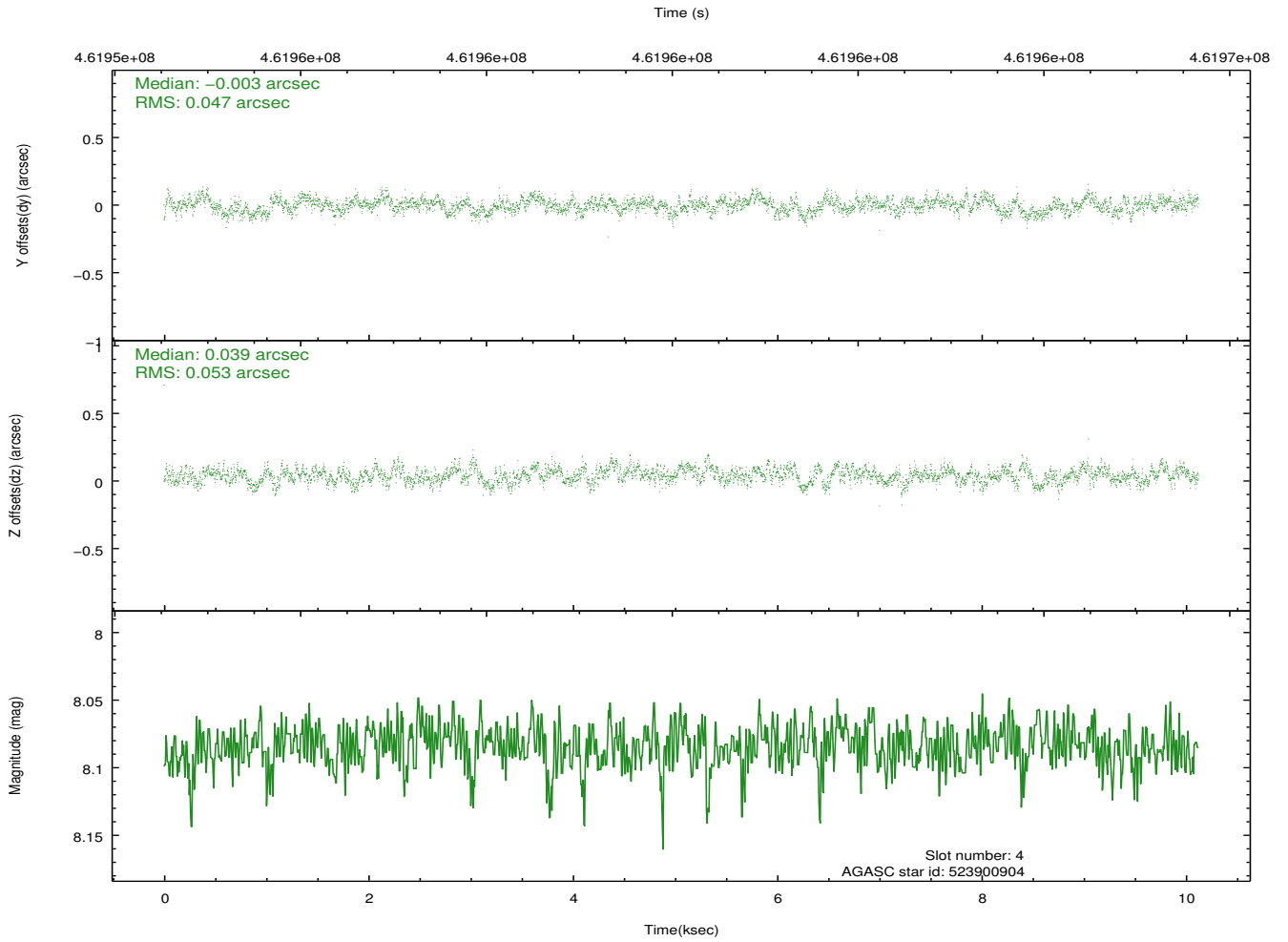
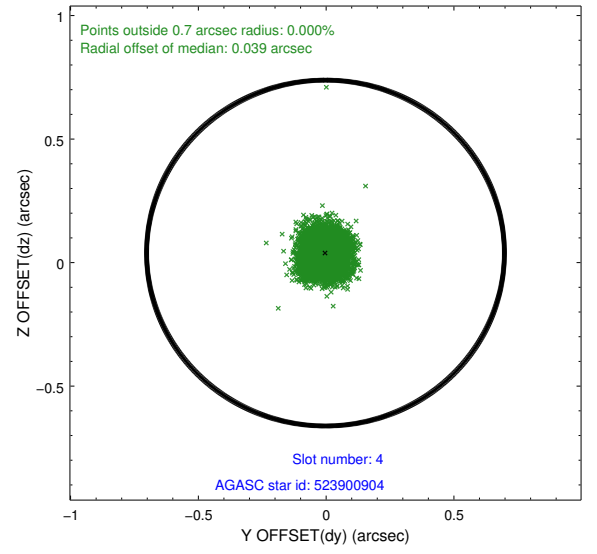
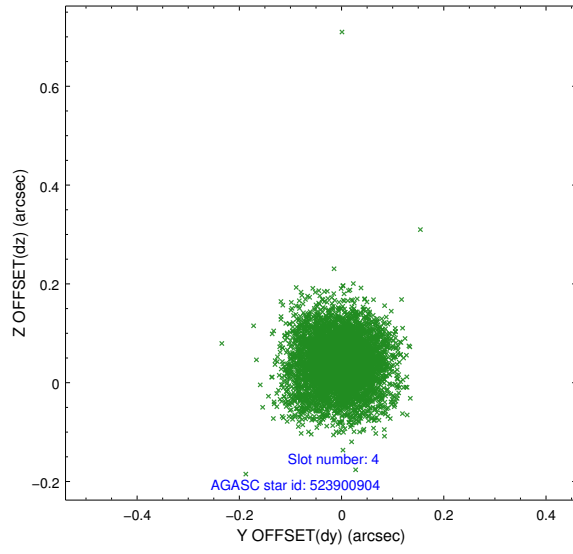
slot	status	id	mag	n_pts	med_dy	med_dz	dr1	dr2	ra	dec	mean_y	mean_z
0	FID	HRC-I-1	6.94	2470	-0.096	0.046	0.008	0.013	0.000000	0.000000	-774.19	-1301.04
1	FID	HRC-I-2	6.97	2470	0.258	-0.141	0.007	0.011	0.000000	0.000000	838.48	-1303.33
2	FID	HRC-I-3	7.02	2470	-0.044	0.006	0.006	0.011	0.000000	0.000000	-1202.27	1002.96
3	GUIDE	523897504	7.30	4940	0.042	-0.388	0.079	0.123	345.600274	58.236768	-1098.57	2137.89
4	GUIDE	523900904	8.08	4940	-0.003	0.039	0.075	0.120	345.082928	59.067580	604.04	-504.11
5	GUIDE	523895352	8.08	4940	-0.105	0.146	0.090	0.145	345.064918	59.451560	984.92	-1833.99
6	GUIDE	523895488	8.29	4937	-0.022	-0.357	0.072	0.115	345.525958	58.267923	-933.39	2065.75
7	GUIDE	523903080	8.25	4939	0.091	0.562	0.072	0.116	346.530042	59.418107	-1634.56	-2421.56

2.4 Star Slots

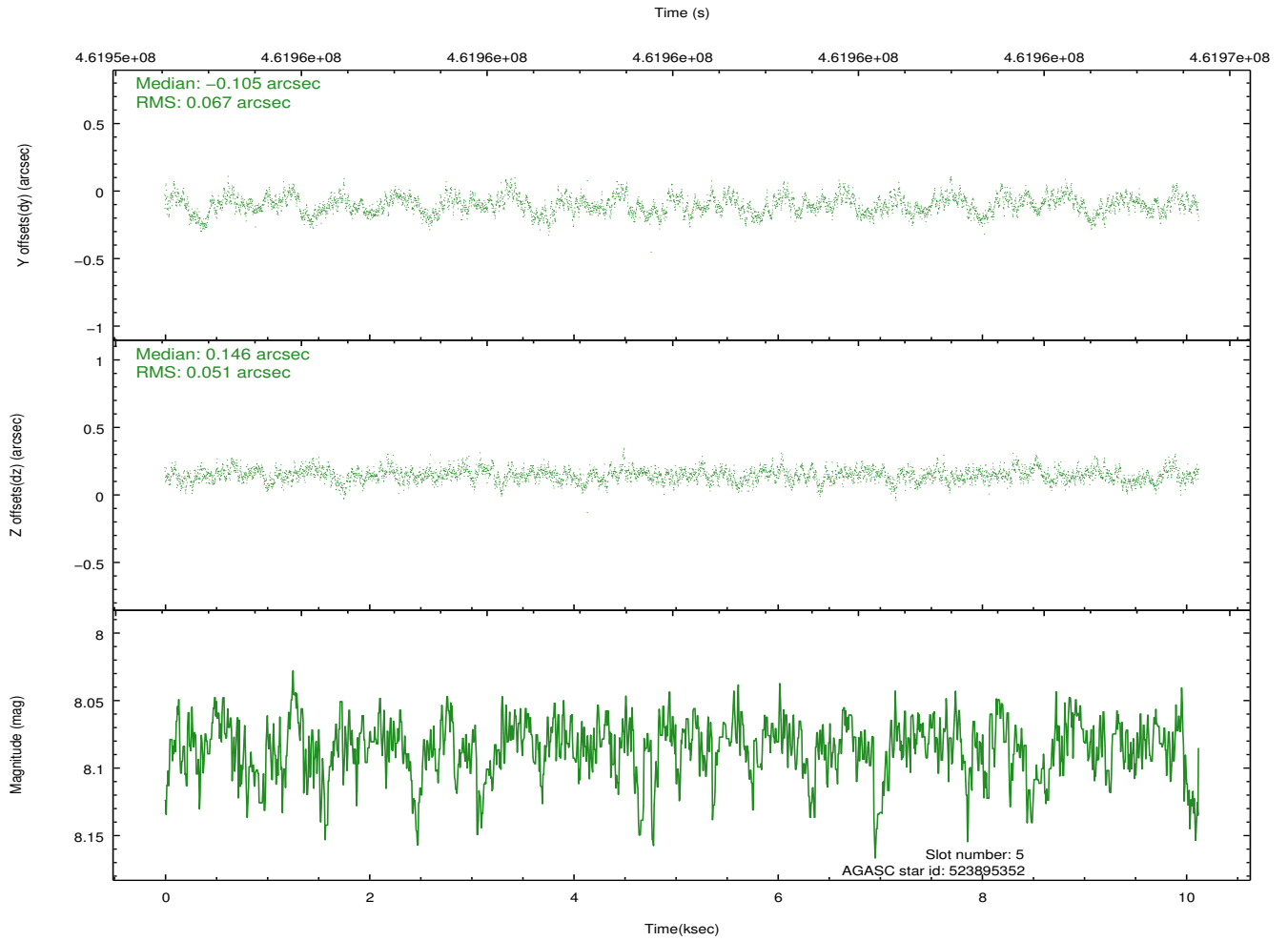
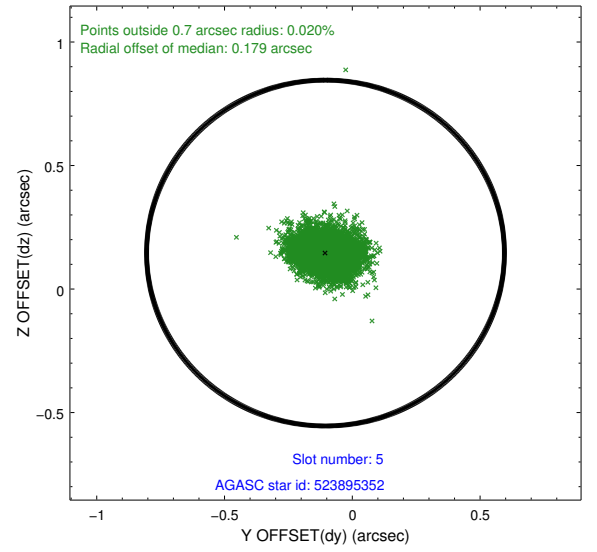
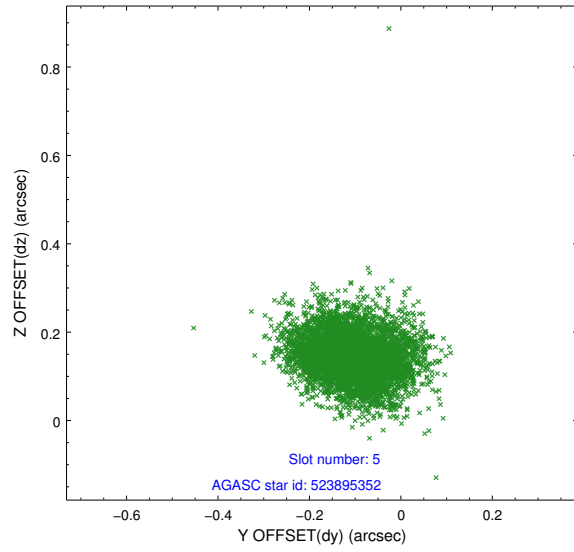
2.4.1 Slot 3



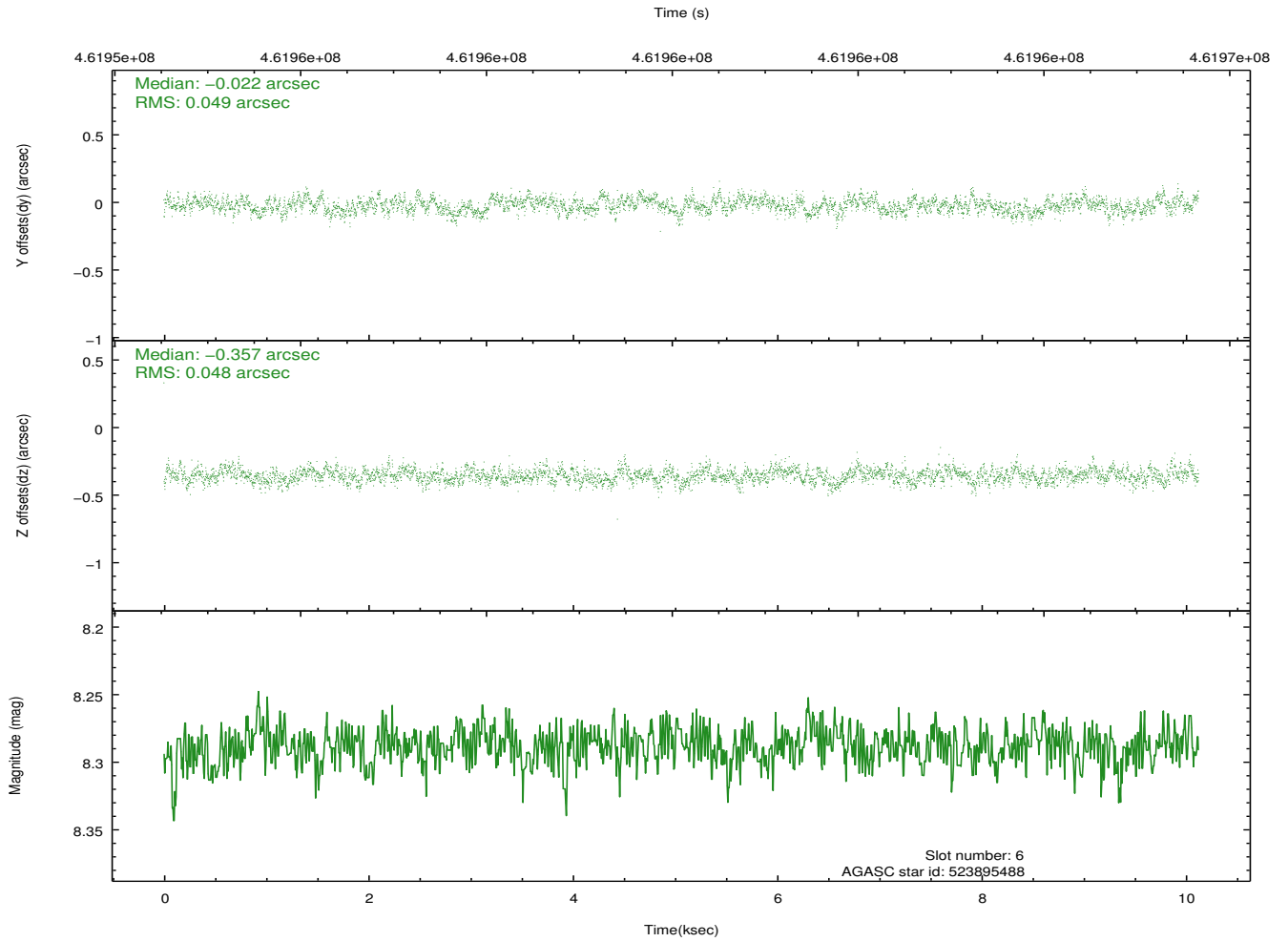
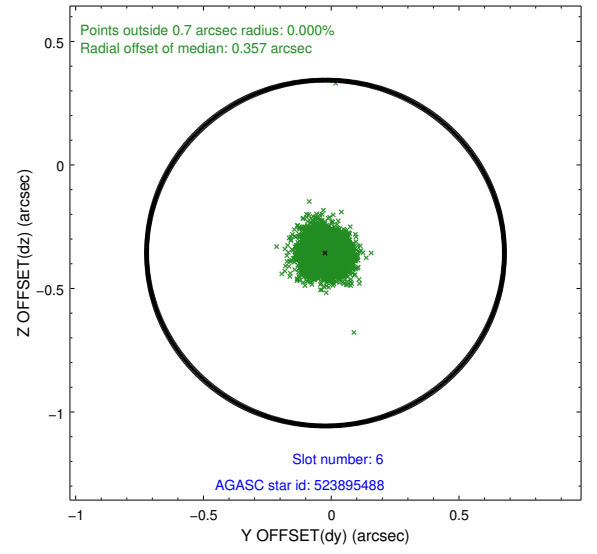
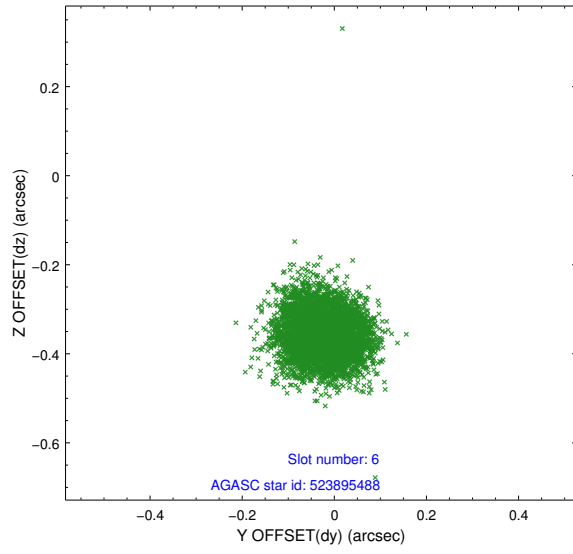
2.4.2 Slot 4



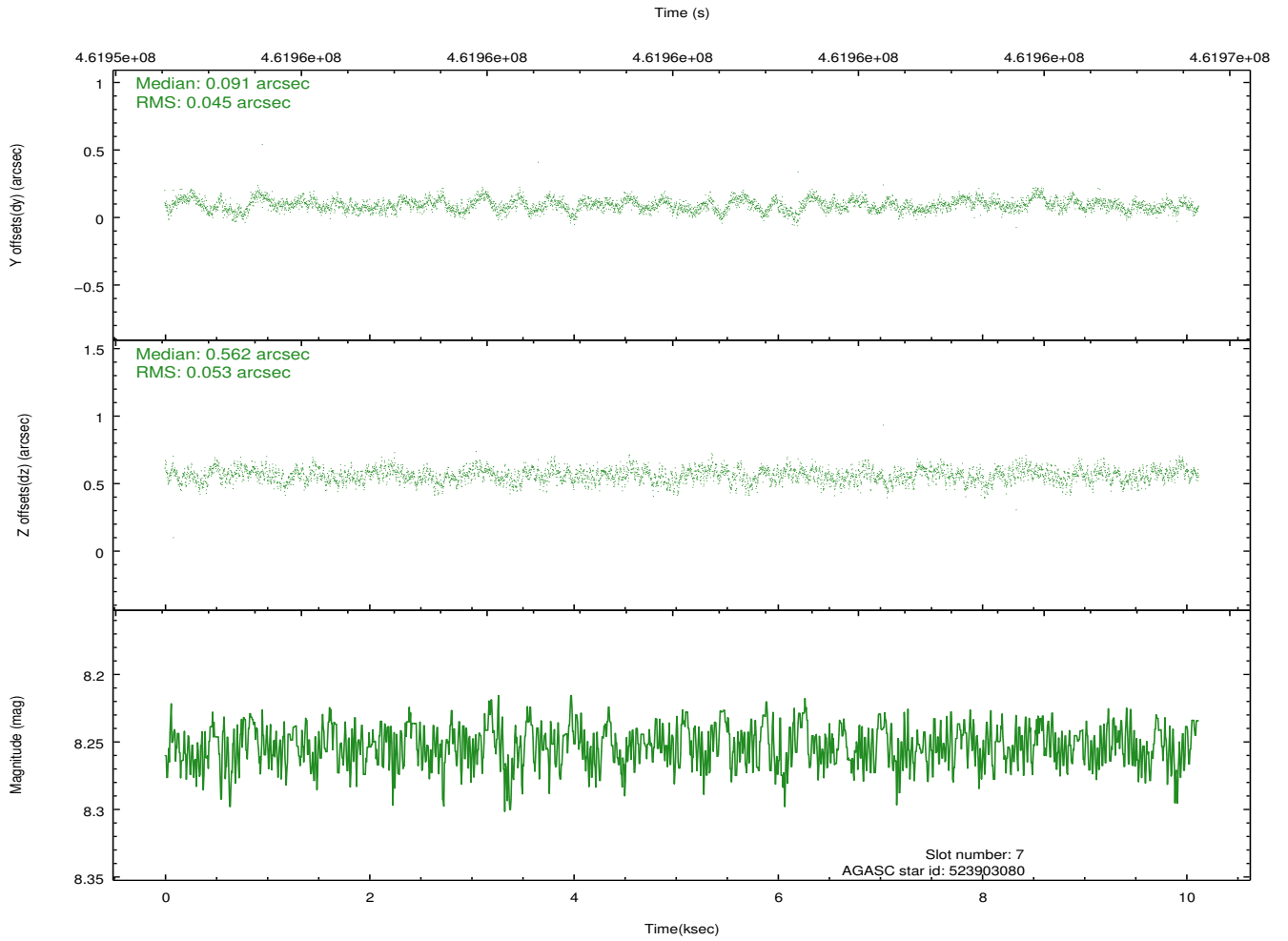
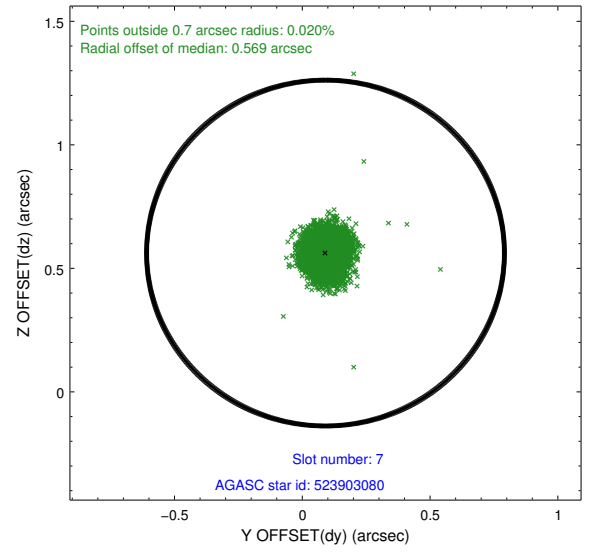
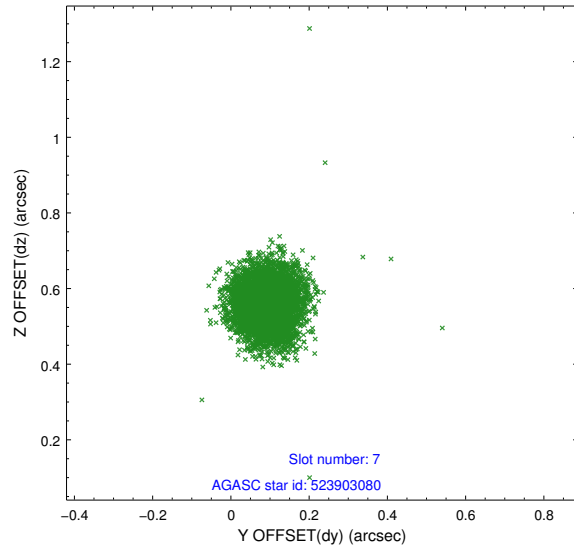
2.4.3 Slot 5



2.4.4 Slot 6

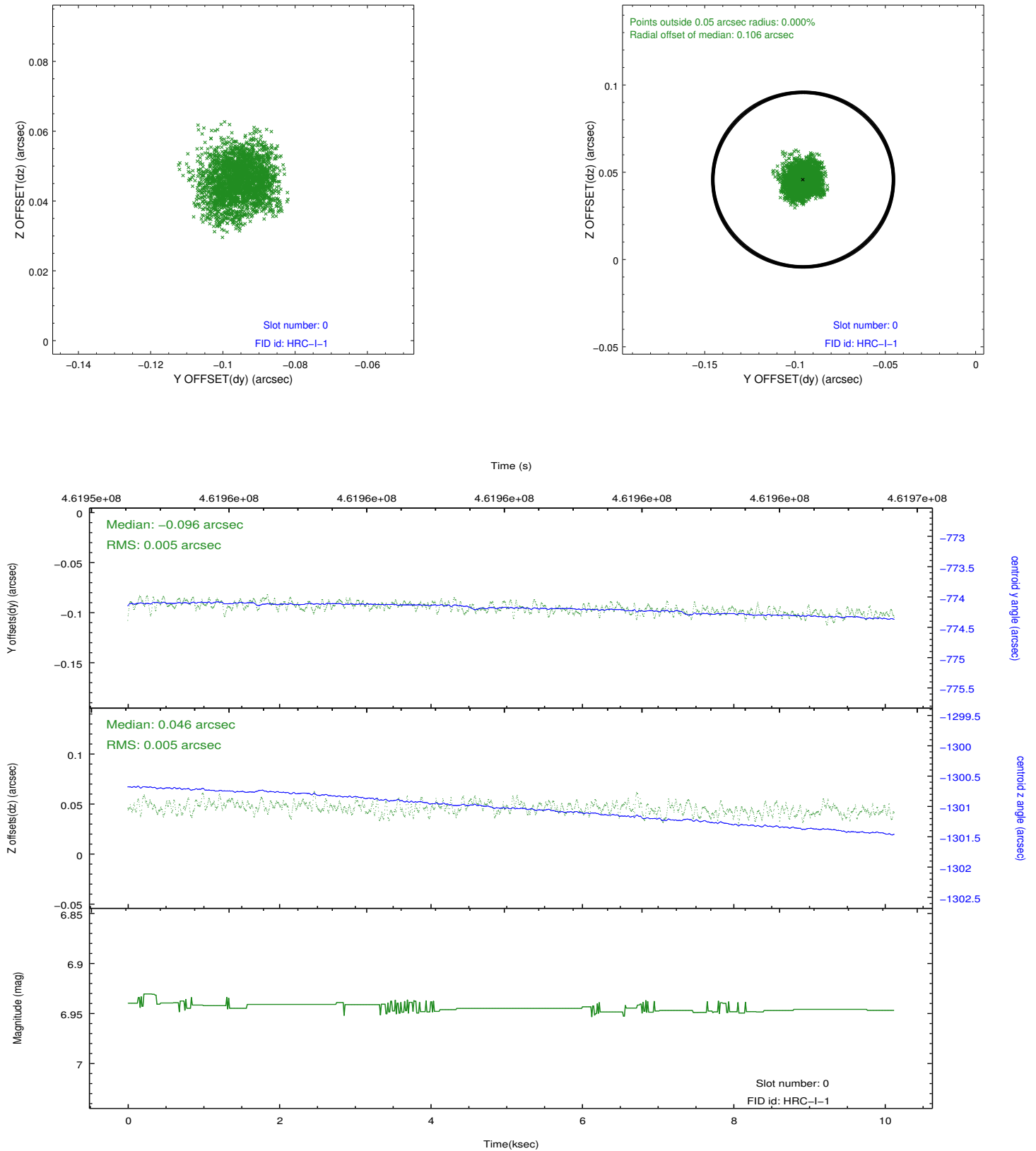


2.4.5 Slot 7

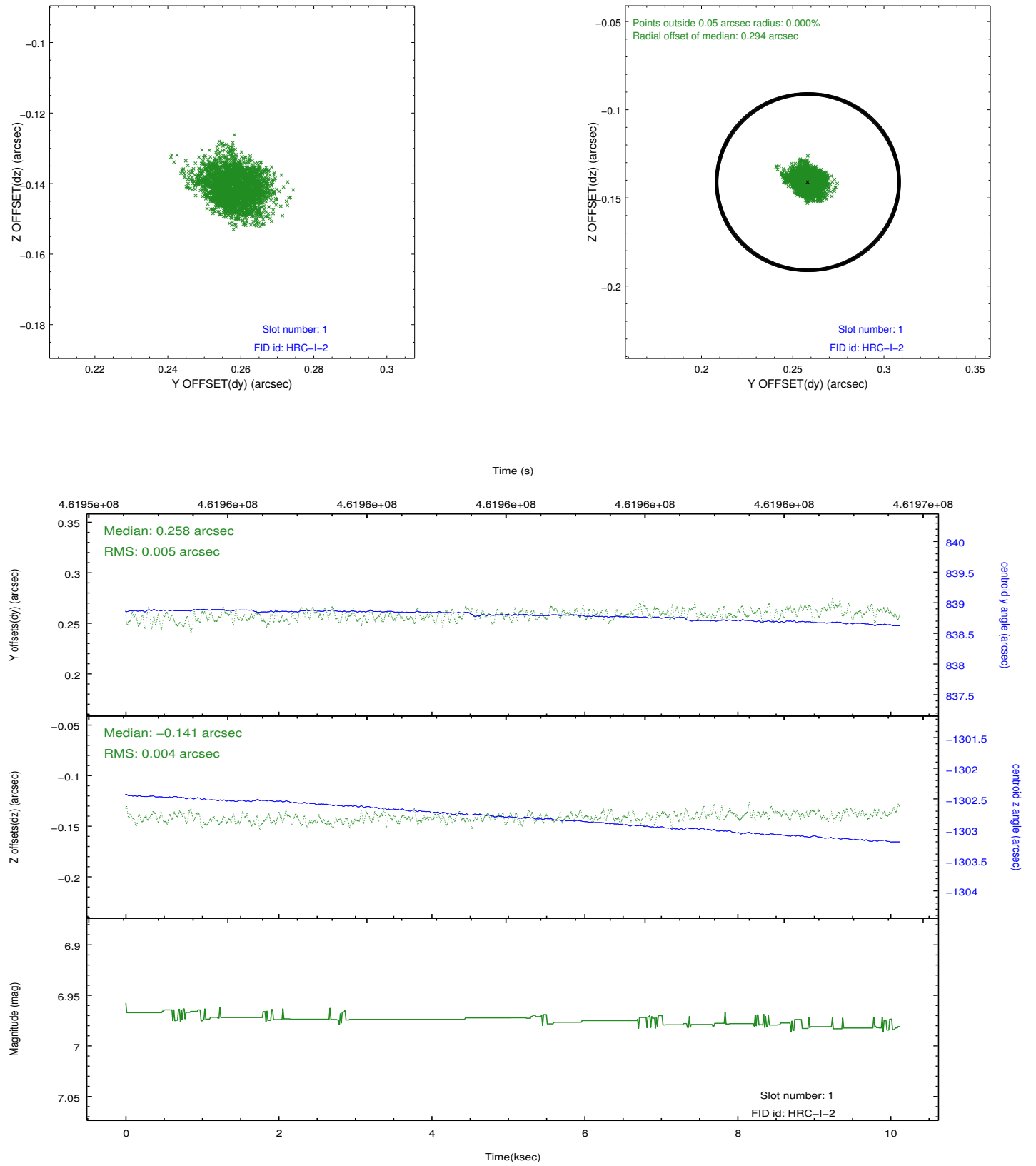


2.5 FID Slots

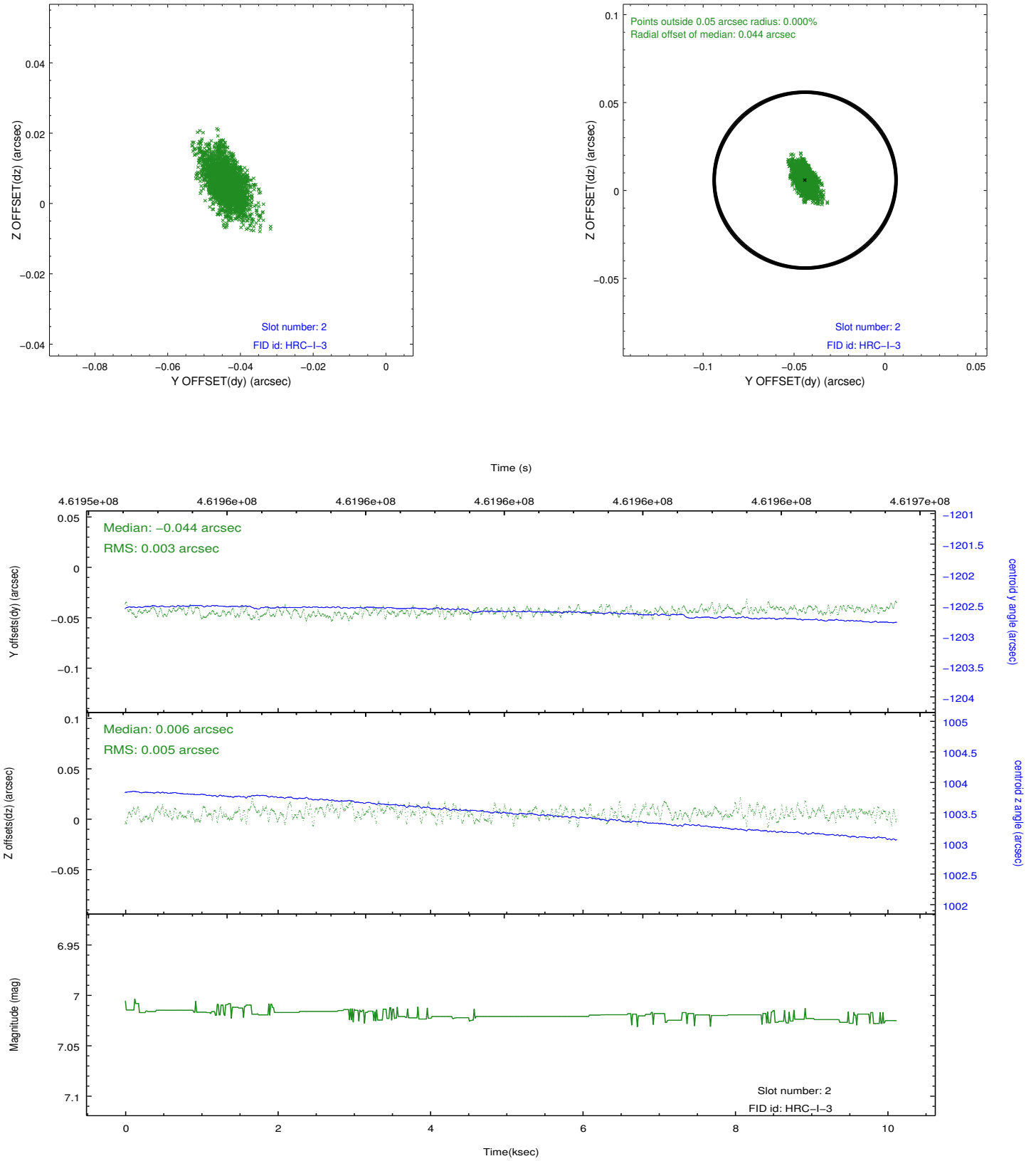
2.5.1 Slot 0



2.5.2 Slot 1



2.5.3 Slot 2



A Summary

A.1 Status

V&V Scientist	Jen Lauer
V&V Date (YYYY-MM-DD)	2012.08.22
V&V Edition	1
V&V Disposition and Status	OK
V&V Charge Time	10.124181791425

A.2 Comments