

# V&V Reference Report

## L2 ASCDS Version : 8.4.4

Observation 13802 - L2 Version 1  
Chandra X-Ray Center

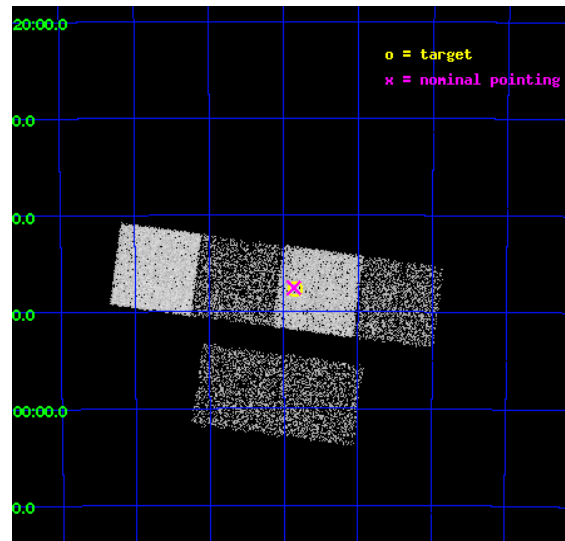
L2 Processing Date : May 21 2012

## Contents

<b>1</b>	<b>Front</b>	<b>2</b>
<b>2</b>	<b>OBI</b>	<b>3</b>
2.1	OBI . . . . .	3
2.1.1	Images . . . . .	3
2.1.2	Bias . . . . .	3
2.1.3	Parameters . . . . .	4
2.1.4	Events . . . . .	4
2.2	Compared Parameters . . . . .	5
2.3	Aspect . . . . .	6
2.4	Star Slots . . . . .	9
2.4.1	Slot 3 . . . . .	9
2.4.2	Slot 4 . . . . .	10
2.4.3	Slot 5 . . . . .	11
2.4.4	Slot 6 . . . . .	12
2.4.5	Slot 7 . . . . .	13
2.5	FID Slots . . . . .	14
2.5.1	Slot 0 . . . . .	14
2.5.2	Slot 1 . . . . .	15
2.5.3	Slot 2 . . . . .	16
<b>A</b>	<b>Summary</b>	<b>17</b>
A.1	Status . . . . .	17
A.2	Comments . . . . .	17

# 1 Front

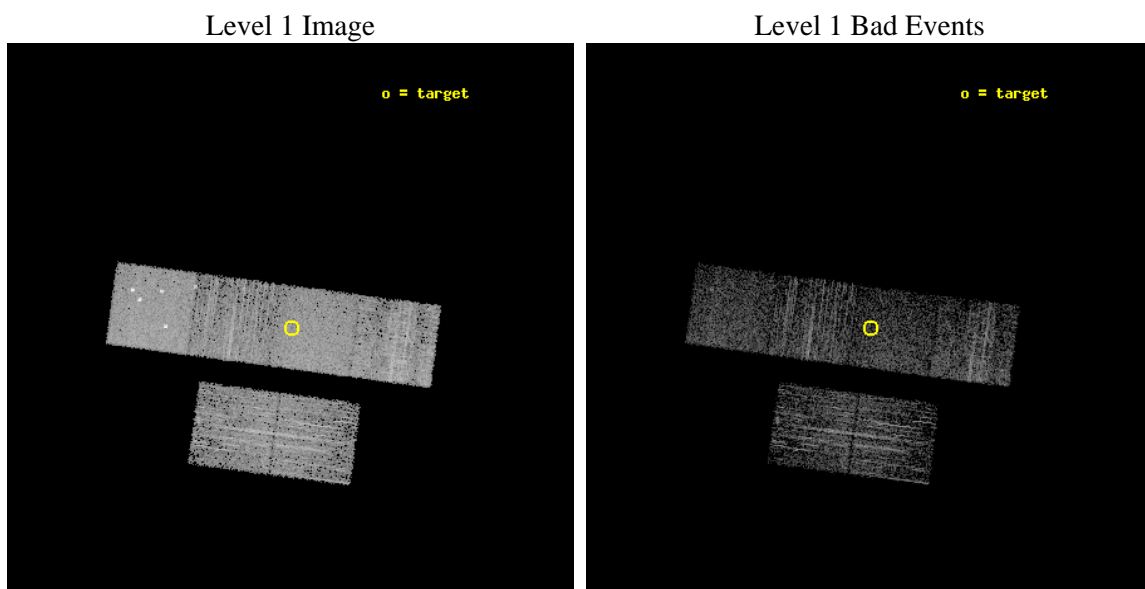
seq_num	501634	Sequence number
obs_id	13802	Observation id
title	A CASE OF MISTAKEN IDENTITY: DISRUPTED RECYCLED PULSARS OR ORPHANED ANTI-MAGNETARS?	Proposal title
observer	Prof. Dr. Bruce Allen	Principal investigator
object	PSR J1611-5847	Source name
dtcycle	0	&#160
cycle	P	events from which exps? Prim/Second/Both
ra_targ	242.96375	Observer's specified target RA [deg]
dec_targ	-58.795083	Observer's specified target Dec [deg]
ra_nom	242.96612392242	Nominal RA [deg]
dec_nom	-58.792420861922	Nominal Dec [deg]
roll_nom	7.5667002074491	Nominal Roll [deg]
revision	1	Processing version of data
ontime	3458.2303833961	Sum of GTIs [s]
livetime	3414.4401879852	Livetime [s]
ontime2	3458.2714233994	Sum of GTIs [s]
ontime3	3458.1072633862	Sum of GTIs [s]
ontime5	3458.1893433928	Sum of GTIs [s]
ontime6	3458.1483033895	Sum of GTIs [s]
ontime7	3458.2303833961	Sum of GTIs [s]
ontime8	3458.0662233829	Sum of GTIs [s]
l2events	34900	Number of level 2 events



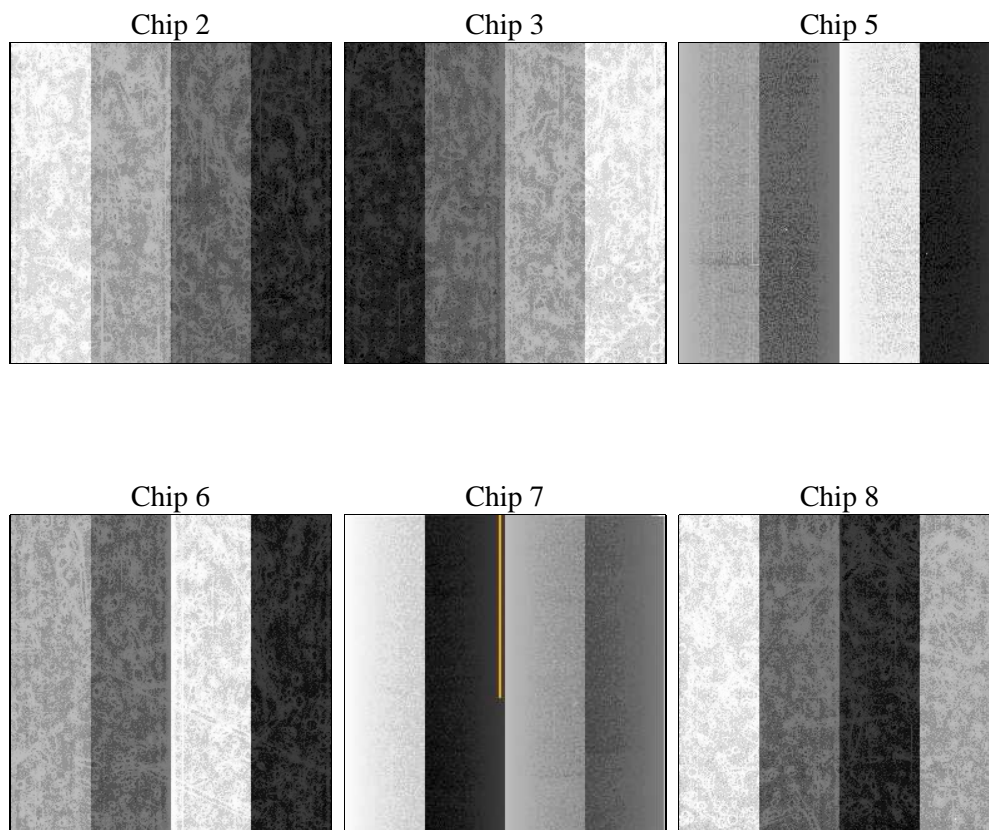
## 2 OBI

### 2.1 OBI

#### 2.1.1 Images



#### 2.1.2 Bias



### 2.1.3 Parameters

obi_num	1	Obi number	sched_exp_time	3500.000000	[s] Scheduled observation exposure time
ascdsver	8.4.4	Processing system revision	ontime	3458.2303833961	Sum of GTIs [s]
caldsver	4.4.9	&#160	ontime2	3458.2714233994	Sum of GTIs [s]
date	2012-05-21T22:48:19	Date and time of file creation	ontime3	3458.1072633862	Sum of GTIs [s]
revision	1	Processing version of data	ontime5	3458.1893433928	Sum of GTIs [s]
			ontime6	3458.1483033895	Sum of GTIs [s]
			ontime7	3458.2303833961	Sum of GTIs [s]
			ontime8	3458.0662233829	Sum of GTIs [s]
			l1events	152644	Number of level 1 events

### 2.1.4 Events

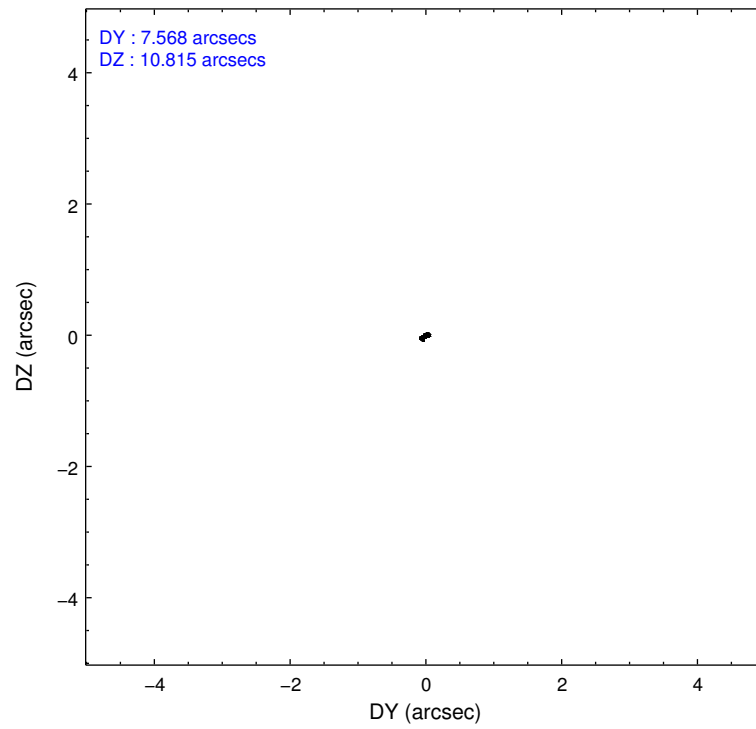
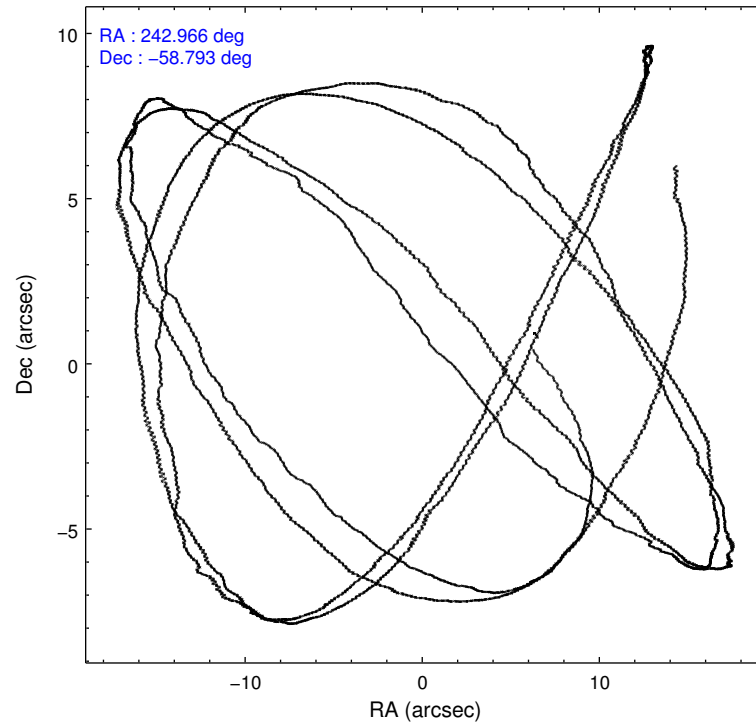
	ccd 2	ccd 3	ccd 5	ccd 6	ccd 7	ccd 8		ccd 2	ccd 3	ccd 5	ccd 6	ccd 7	ccd 8
level 1 events	21234	20769	35085	21625	26368	27563	grade 0 events	868	775	3622	1045	1076	2154
rejected events	18776	18615	16595	18989	14737	20142		4%	3%	10%	4%	4%	7%
rejected %	88%	89%	47%	87%	55%	73%	grade 1 events	11	20	153	11	39	24
								0%	0%	0%	0%	0%	0%
							grade 2 events	596	462	5097	542	2384	1736
								2%	2%	14%	2%	9%	6%
							grade 3 events	262	244	541	243	1004	850
								1%	1%	1%	1%	3%	3%
							grade 4 events	262	244	554	271	978	812
								1%	1%	1%	1%	3%	2%
							grade 5 events	876	1070	2285	1007	2685	1475
								4%	5%	6%	4%	10%	5%
							grade 6 events	474	431	8711	542	6204	1877
								2%	2%	24%	2%	23%	6%
							grade 7 events	17885	17523	14122	17964	11998	18635
								84%	84%	40%	83%	45%	67%

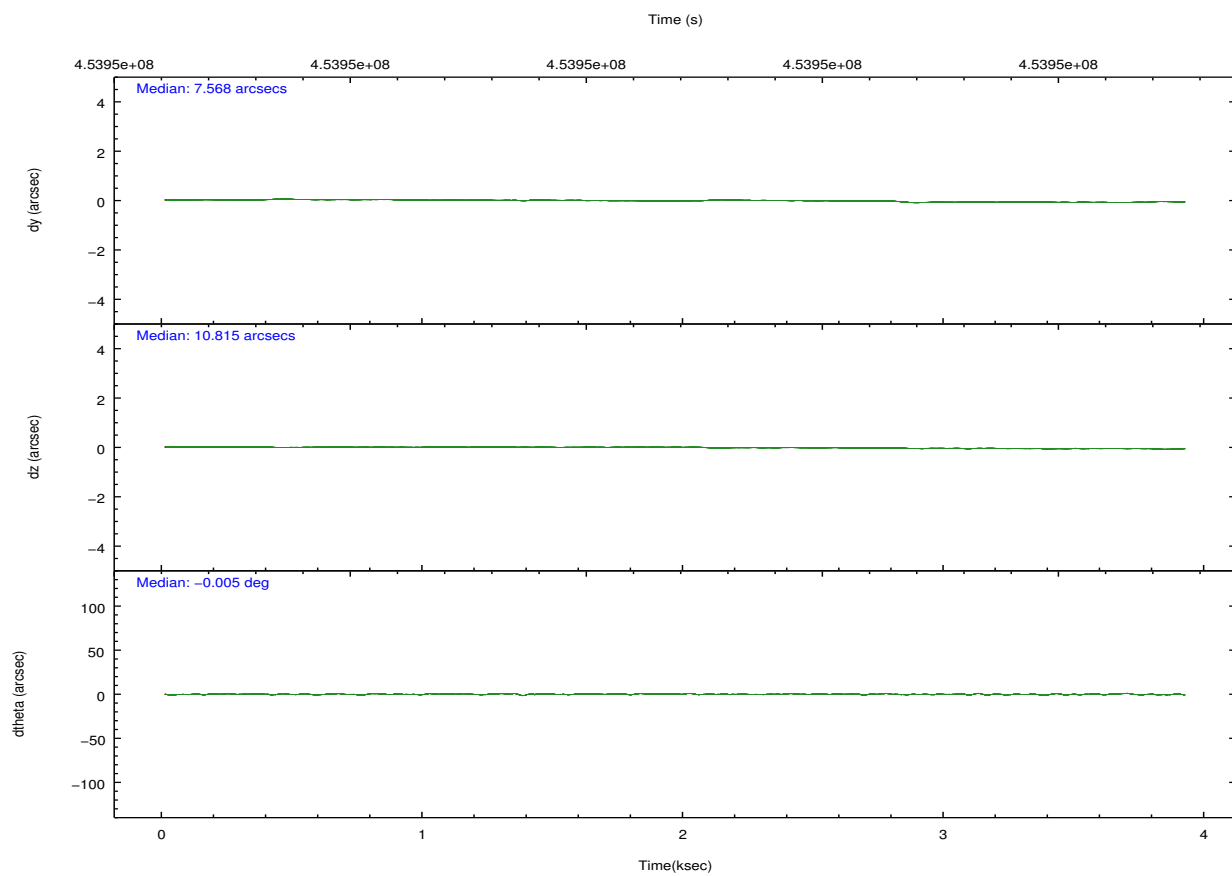
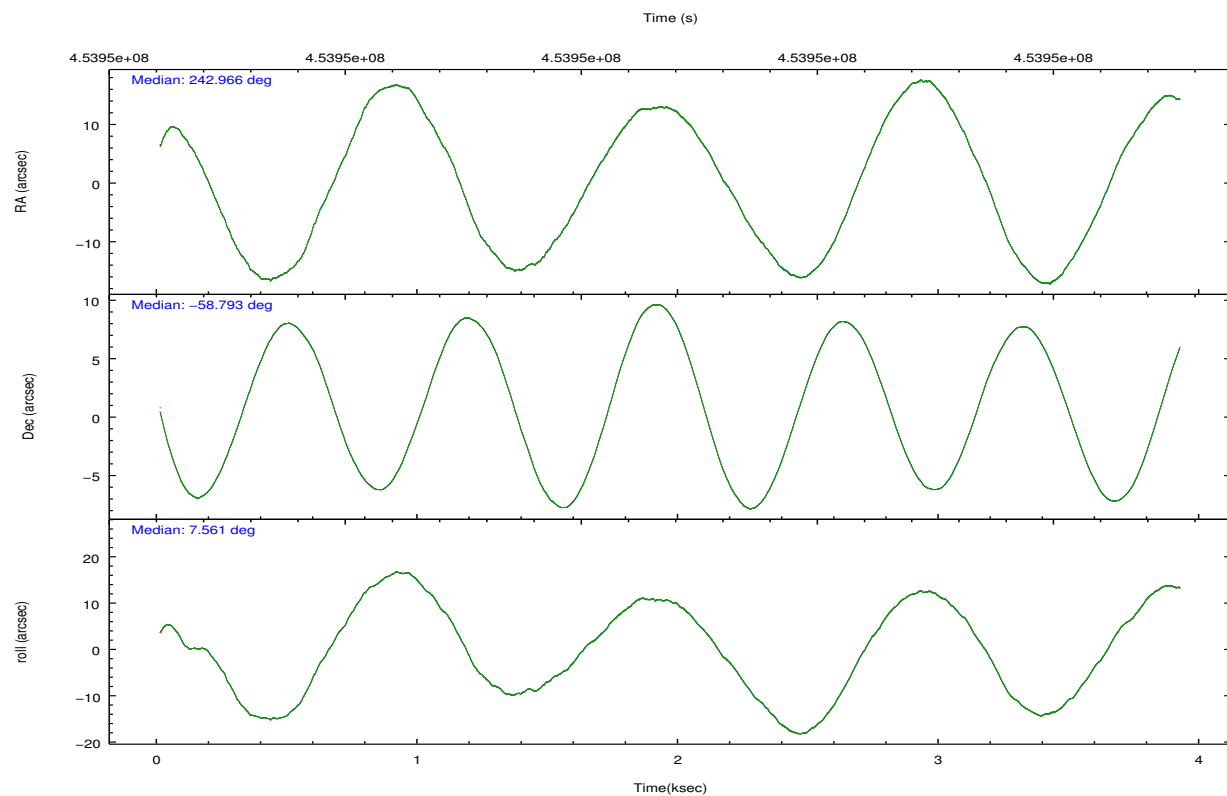


## 2.2 Compared Parameters

Parameter	Planned	Actual	Parameter	Planned	Actual
Instrument	ACIS	ACIS	Obspar format version number	7	7
Detector	ACIS-235678	ACIS-235678	Obspar file type	PREDICTED	ACTUAL
Grating	NONE	NONE	Obspar update status	NONE	UPDATED
Data mode	VFAINT	VFAINT	CCD I0 on	N	N
Observation mode	POINTING	POINTING	CCD I1 on	N	N
[deg] Pointing RA	242.924812	242.9661239224164	CCD I2 on	O1	Y
[deg] Pointing Dec	-58.809295	-58.79242086192151	CCD I3 on	O2	Y
[deg] Pointing Roll	7.374728	7.566700207449126	CCD S0 on	N	N
[mm] SIM focus pos	-0.684267	-0.6828225247311905	CCD S1 on	Y	Y
[mm] SIM defocus	0	0.001444936568705701	CCD S2 on	Y	Y
[mm] SIM translation stage pos	-190.132523	-190.1400660498719	CCD S3 on	Y	Y
[mm] SIM translation stage offset	0	0.00754346686406393	CCD S4 on	Y	Y
[s] Observation start time (MET)	453949836.184000	453948618.75405	CCD S5 on	N	N
Observation start date	2012-05-21T01:09:30	2012-05-21T00:50:18	Number of optional ACIS chips dropped	0	0
[s] Observation end time (MET)	453953336.184000	453954252.15435	On-chip summing requested	N	N
Observation end date	2012-05-21T02:07:50	2012-05-21T02:24:12	Subarray requested	NONE	NONE
Read mode	TIMED	TIMED	Alternating exposures requested	N	N
			[s] Primary exposure time	0.000000	3.2

## 2.3 Aspect



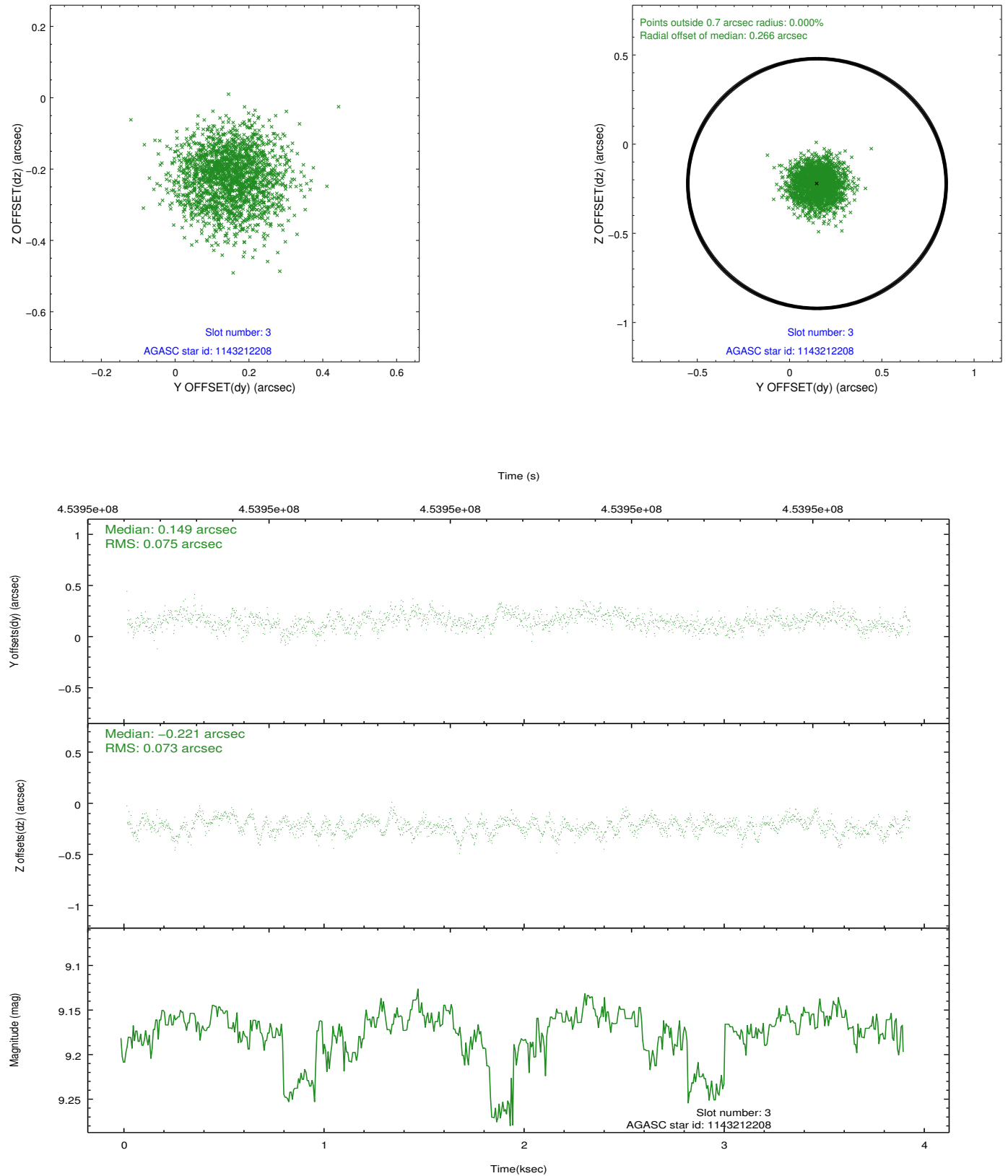


### Slot Statistics

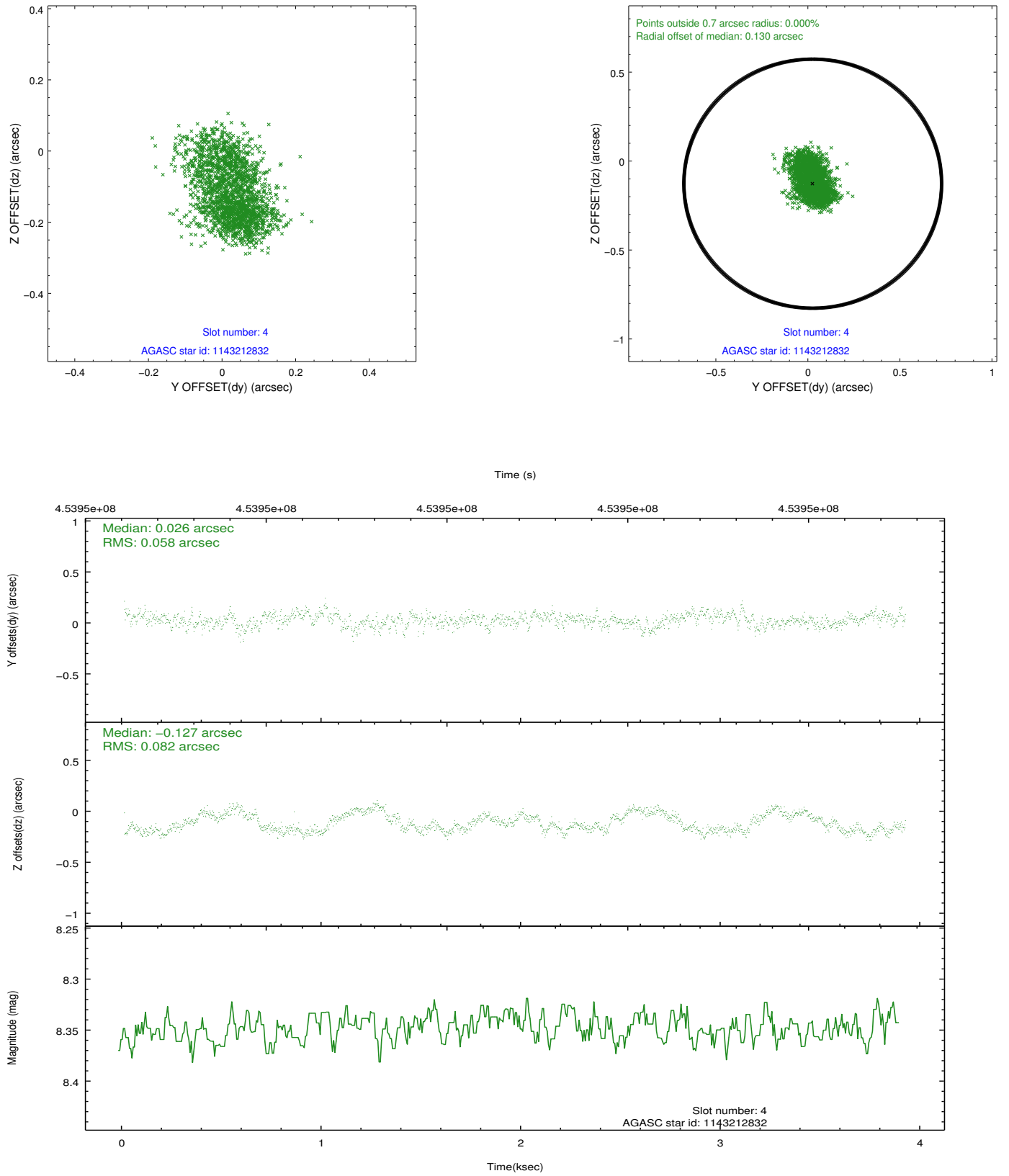
slot	status	id	mag	n_pts	med_dy	med_dz	dr1	dr2	ra	dec	mean_y	mean_z
0	FID	ACIS-S-2	7.04	954	-0.077	-0.039	0.007	0.011	0.000000	0.000000	-760.38	-1732.12
1	FID	ACIS-S-4	7.13	955	0.217	0.048	0.006	0.012	0.000000	0.000000	2152.44	174.83
2	FID	ACIS-S-5	7.16	955	-0.171	0.000	0.007	0.013	0.000000	0.000000	-1811.29	170.23
3	GUIDE	1143212208	9.17	1904	0.149	-0.221	0.112	0.177	242.680740	-58.772041	-433.92	190.85
4	GUIDE	1143212832	8.35	1909	0.026	-0.127	0.108	0.173	242.820251	-58.596142	-95.72	786.48
5	GUIDE	1143216896	9.10	1910	0.016	0.182	0.099	0.165	242.126517	-58.994952	-1554.39	-480.67
6	GUIDE	1143349904	9.09	1910	-0.145	0.039	0.121	0.194	243.748101	-58.508850	1672.56	864.96
7	GUIDE	1143350192	8.40	1909	-0.047	0.133	0.121	0.186	243.423662	-59.151451	755.94	-1342.32

## 2.4 Star Slots

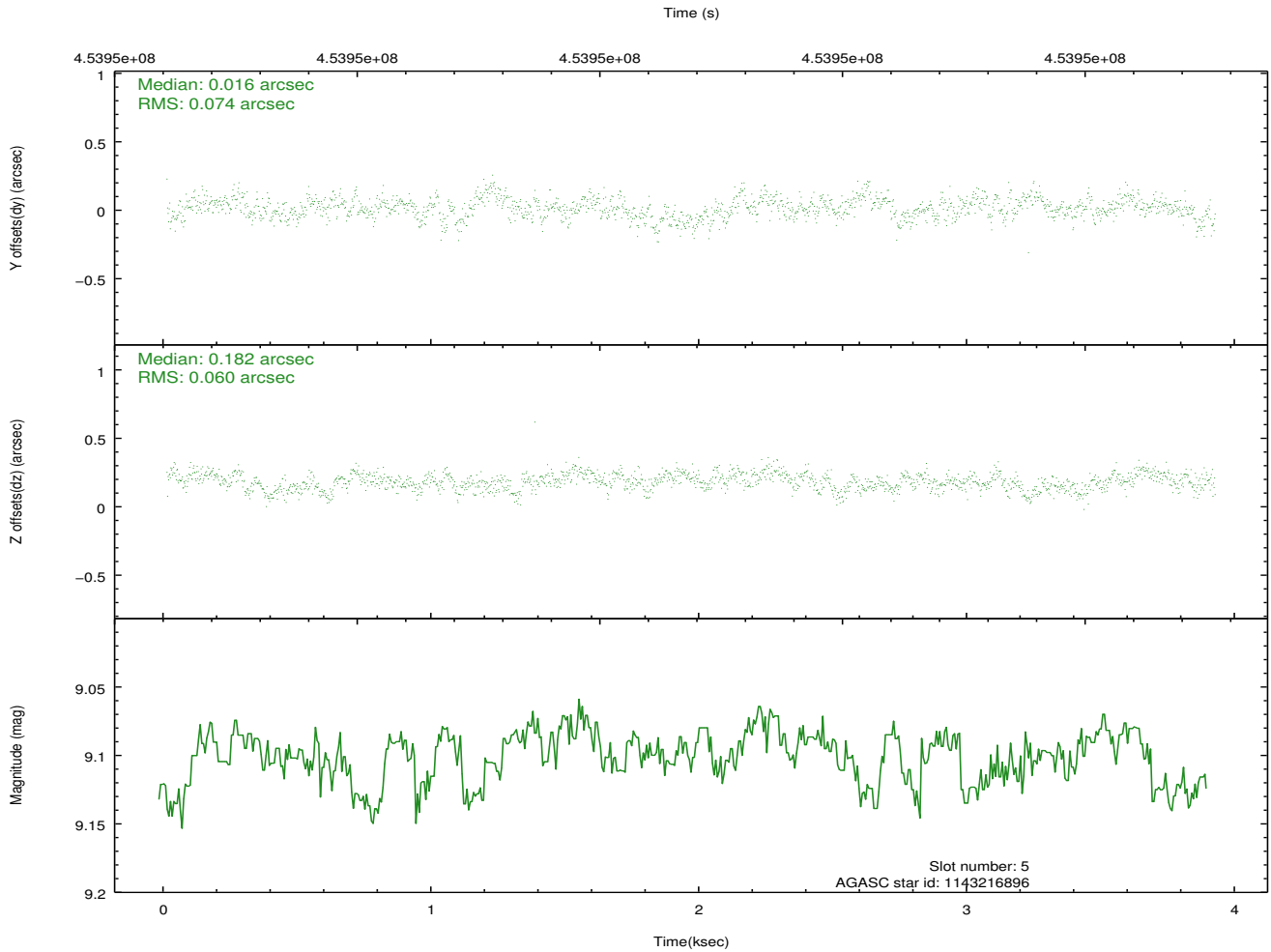
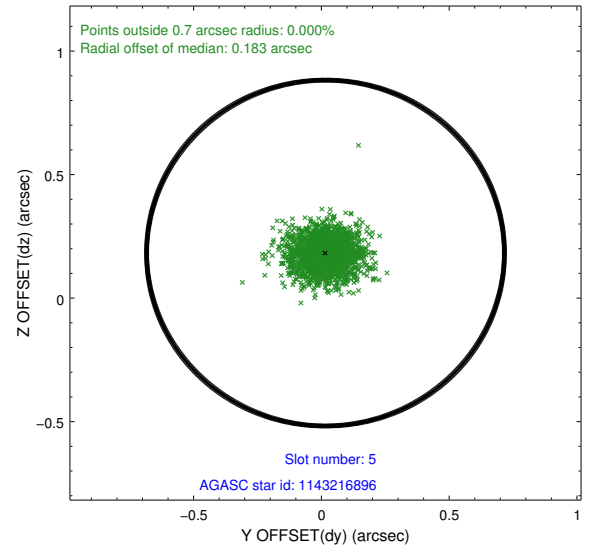
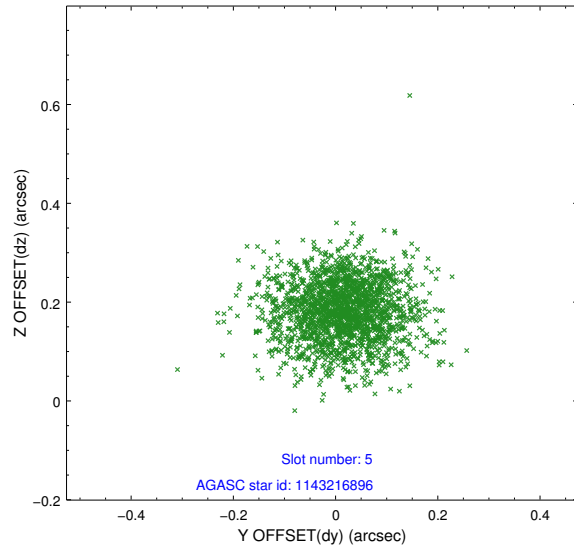
### 2.4.1 Slot 3



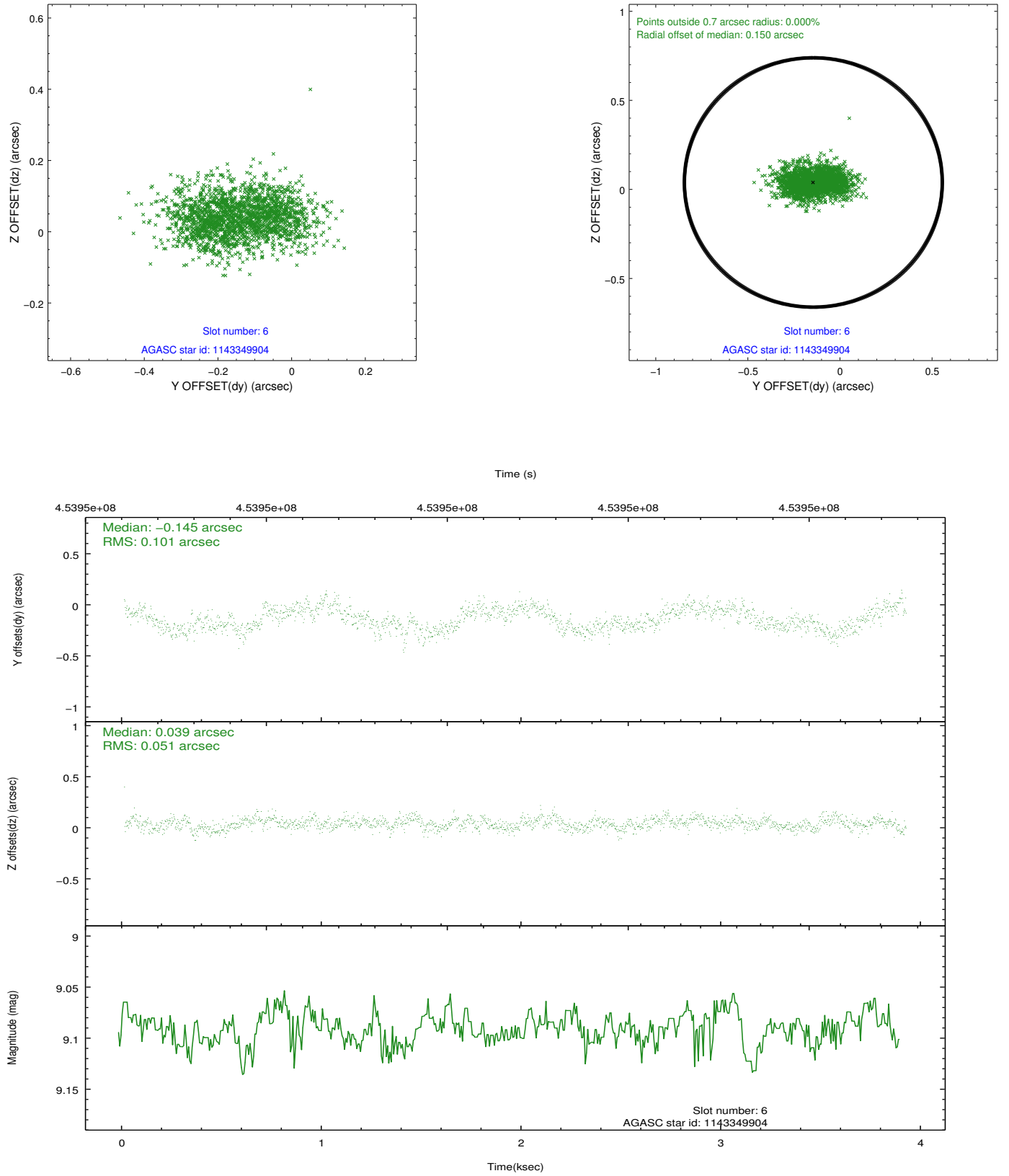
## 2.4.2 Slot 4



### 2.4.3 Slot 5

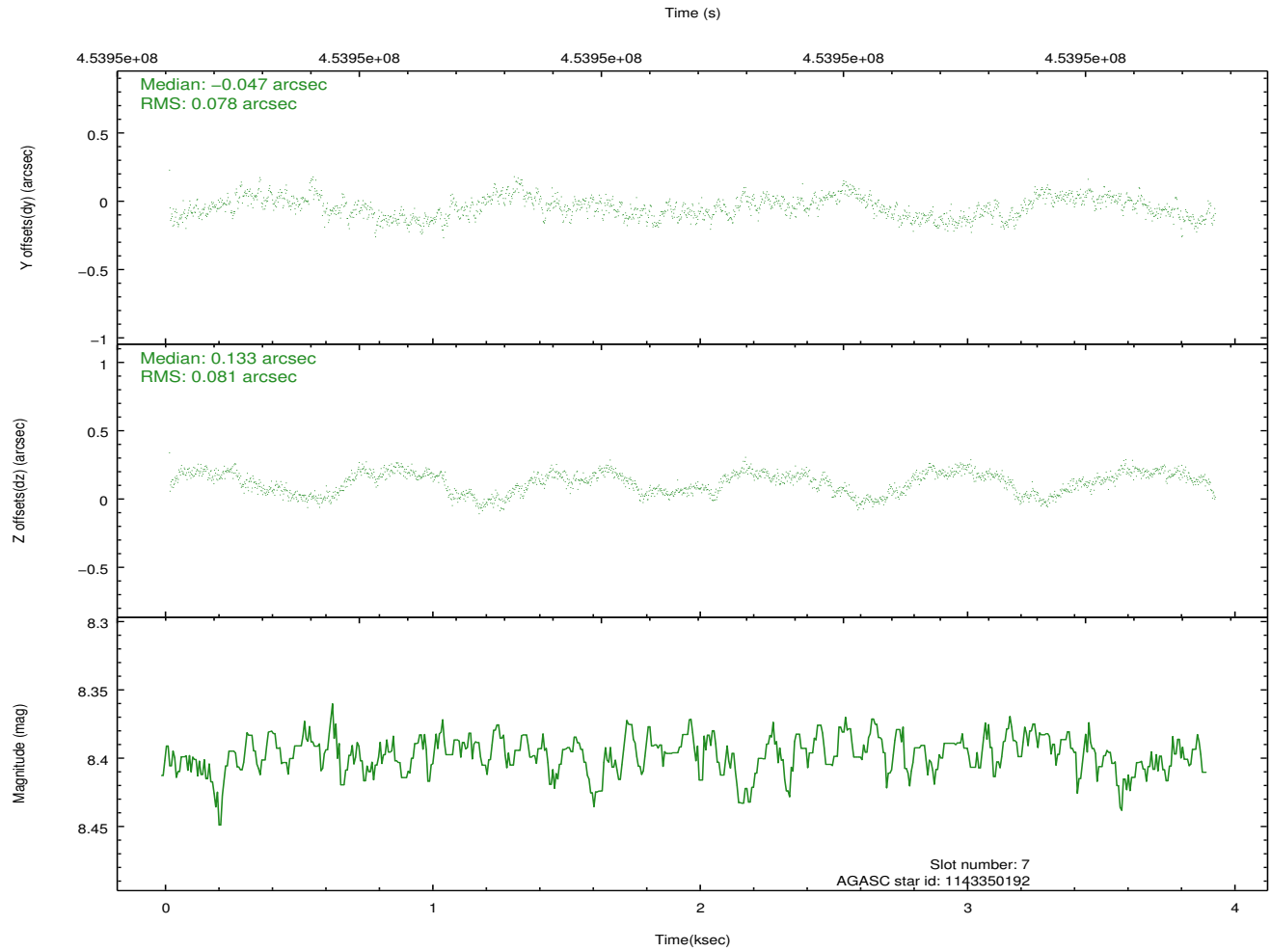
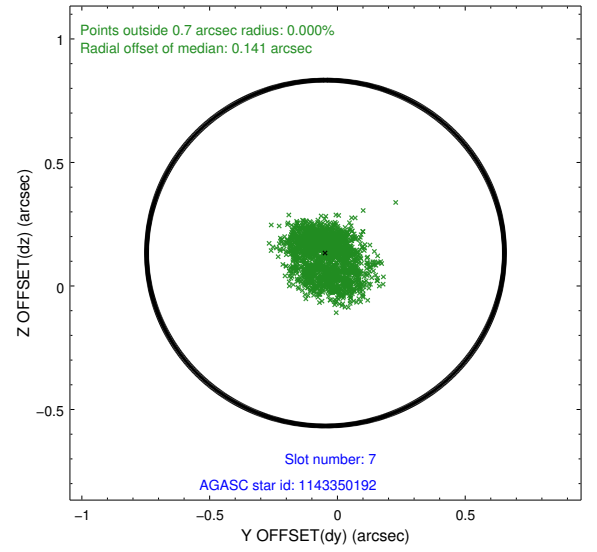
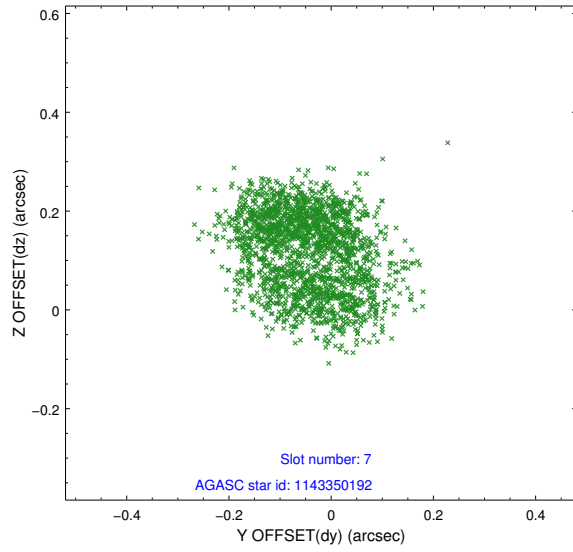


## 2.4.4 Slot 6



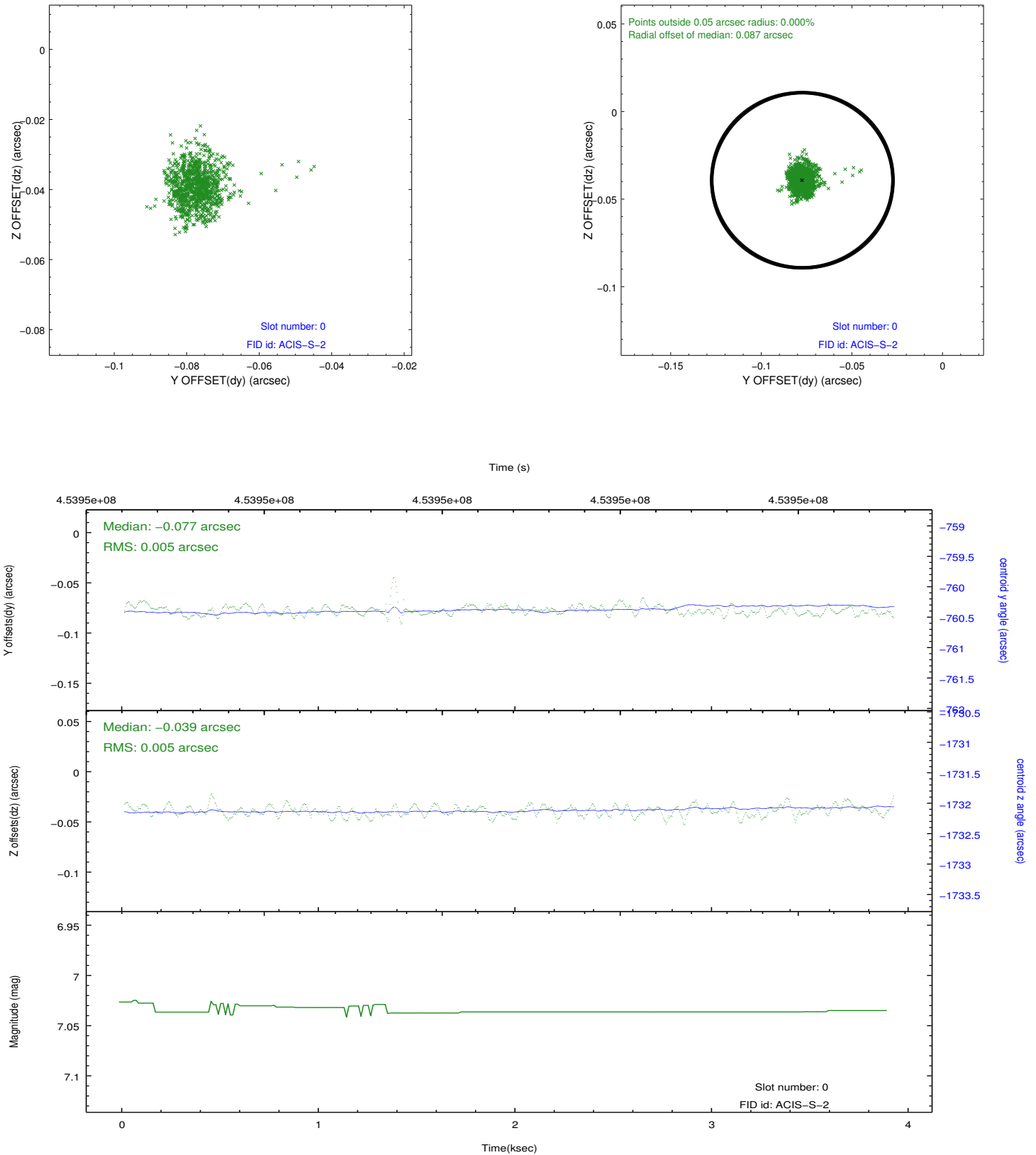


## 2.4.5 Slot 7

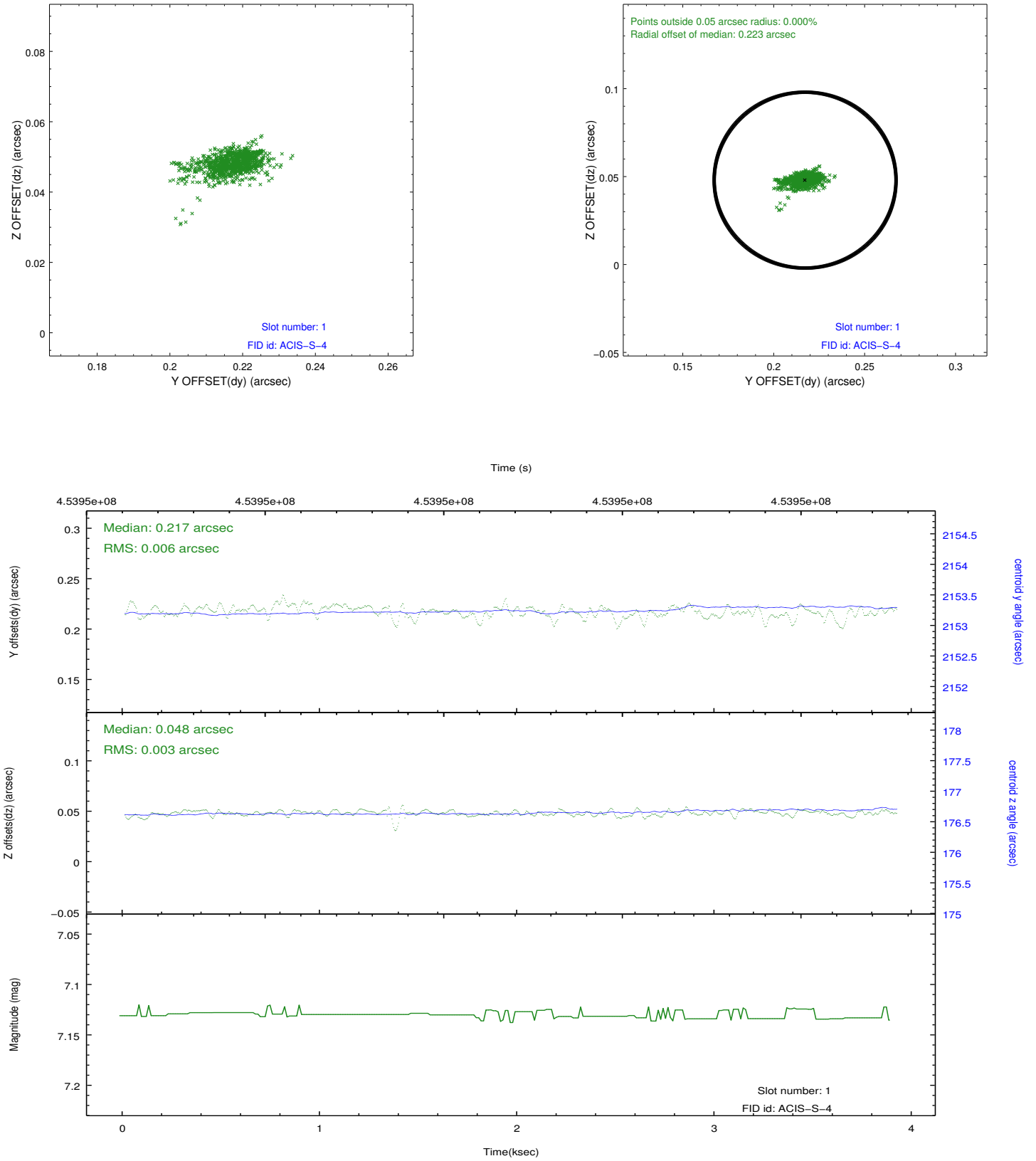


## 2.5 FID Slots

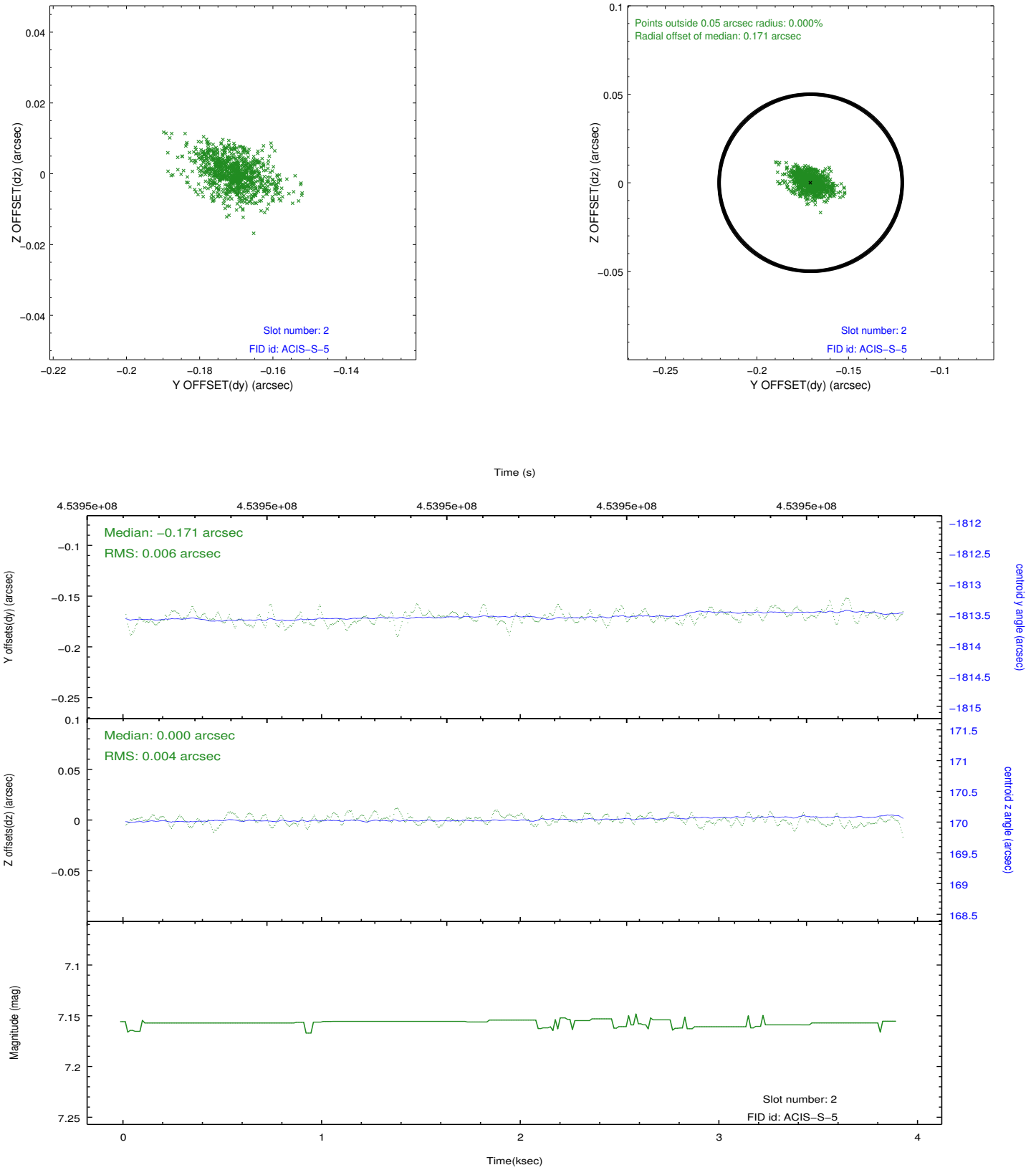
### 2.5.1 Slot 0



## 2.5.2 Slot 1



### 2.5.3 Slot 2



## A Summary

### A.1 Status

V&V Scientist	Joy Nichols
V&V Date (YYYY-MM-DD)	2012.05.22
V&V Edition	1
V&V Disposition and Status	OK
V&V Charge Time	3.4582303833961

### A.2 Comments