

V&V Reference Report

L2 ASCDS Version : 8.4.4

Observation 13286 - L2 Version 1
Chandra X-Ray Center

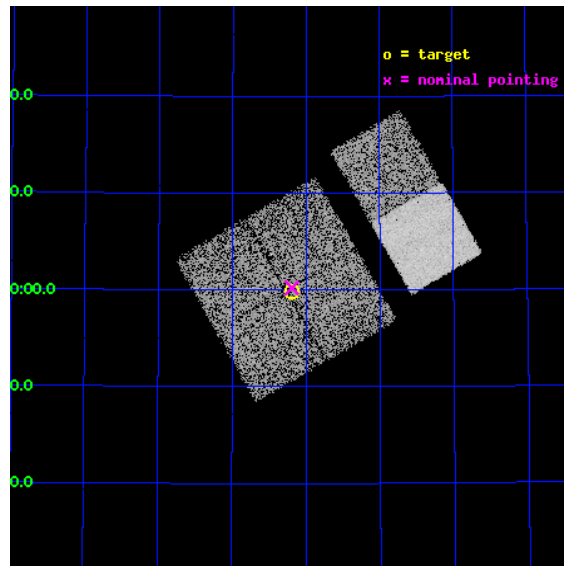
L2 Processing Date : Apr 21 2012

Contents

1	Front	2
2	OBI	3
2.1	OBI	3
2.1.1	Images	3
2.1.2	Bias	3
2.1.3	Parameters	4
2.1.4	Events	4
2.2	Compared Parameters	5
2.3	Aspect	6
2.4	Star Slots	9
2.4.1	Slot 3	9
2.4.2	Slot 4	10
2.4.3	Slot 5	11
2.4.4	Slot 6	12
2.4.5	Slot 7	13
2.5	FID Slots	14
2.5.1	Slot 0	14
2.5.2	Slot 1	15
2.5.3	Slot 2	16
A	Summary	17
A.1	Status	17
A.2	Comments	17

1 Front

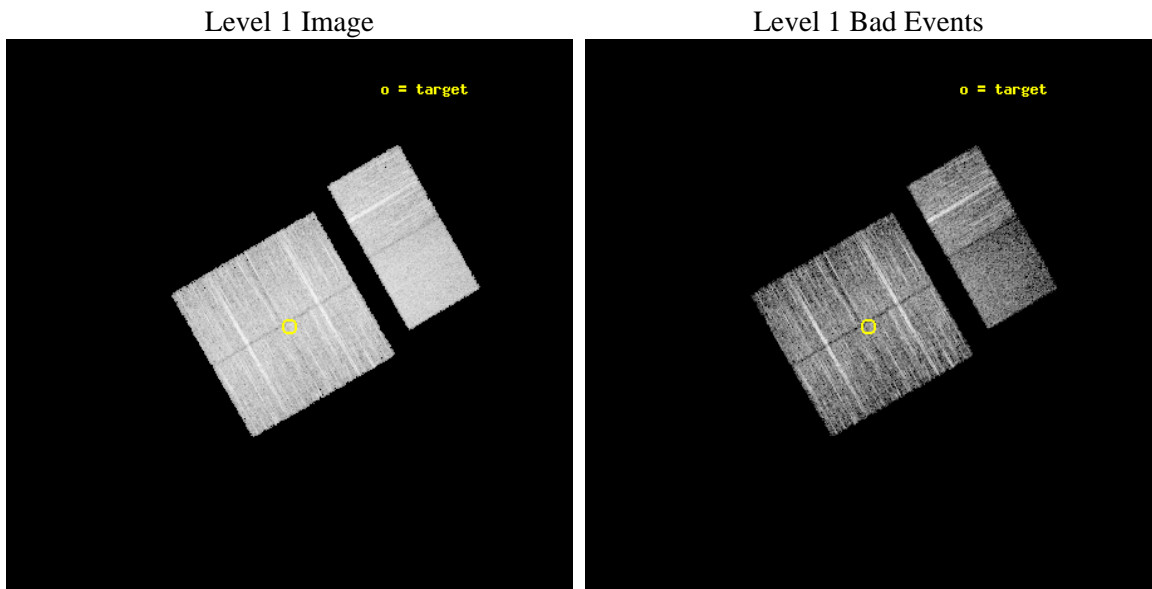
seq_num	501554	Sequence number
obs_id	13286	Observation id
title	Snap-shot survey of new galactic gamma-ray sources	Proposal title
observer	Professor Gordon Garmire	Principal investigator
object	PSR J2238+59	Source name
dtcycle	0	
cycle	P	events from which exps? Prim/Second/Both
ra_targ	339.547083	Observer's specified target RA [deg]
dec_targ	58.998111	Observer's specified target Dec [deg]
ra_nom	339.54816115329	Nominal RA [deg]
dec_nom	59.003819410244	Nominal Dec [deg]
roll_nom	60.024595966603	Nominal Roll [deg]
revision	1	Processing version of data
ontime	9961.5999629498	Sum of GTIs [s]
livetime	9835.4601860635	Livetime [s]
ontime0	9961.5999629498	Sum of GTIs [s]
ontime1	9961.5999629498	Sum of GTIs [s]
ontime2	9958.3589326143	Sum of GTIs [s]
ontime3	9961.5999629498	Sum of GTIs [s]
ontime6	9961.5999629498	Sum of GTIs [s]
ontime7	9961.5999629498	Sum of GTIs [s]
l2events	54456	Number of level 2 events



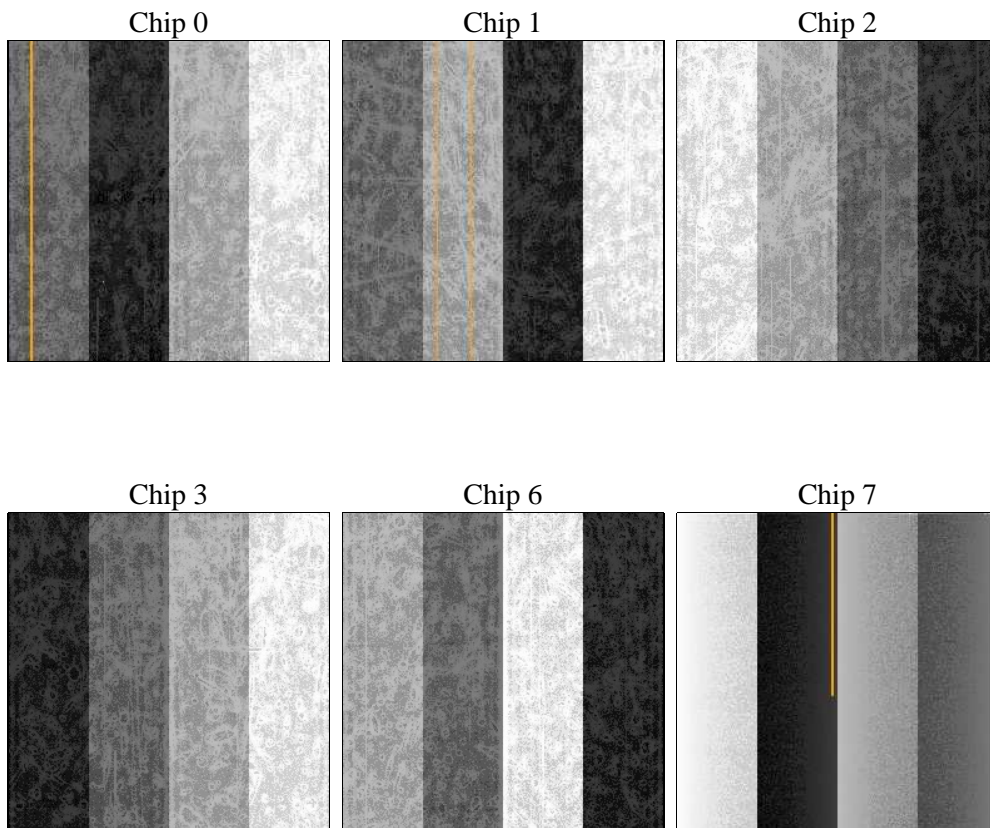
2 OBI

2.1 OBI

2.1.1 Images



2.1.2 Bias



2.1.3 Parameters

obi_num	1	Obi number	sched_exp_time	10000.000000	[s] Scheduled observation exposure time
ascdsver	8.4.4	Processing system revision	ontime	9961.5999629498	Sum of GTIs [s]
caldsver	4.4.9	 	ontime0	9961.5999629498	Sum of GTIs [s]
date	2012-04-22T01:02:33	Date and time of file creation	ontime1	9961.5999629498	Sum of GTIs [s]
revision	1	Processing version of data	ontime2	9958.3589326143	Sum of GTIs [s]
			ontime3	9961.5999629498	Sum of GTIs [s]
			ontime6	9961.5999629498	Sum of GTIs [s]
			ontime7	9961.5999629498	Sum of GTIs [s]
			l1events	335358	Number of level 1 events

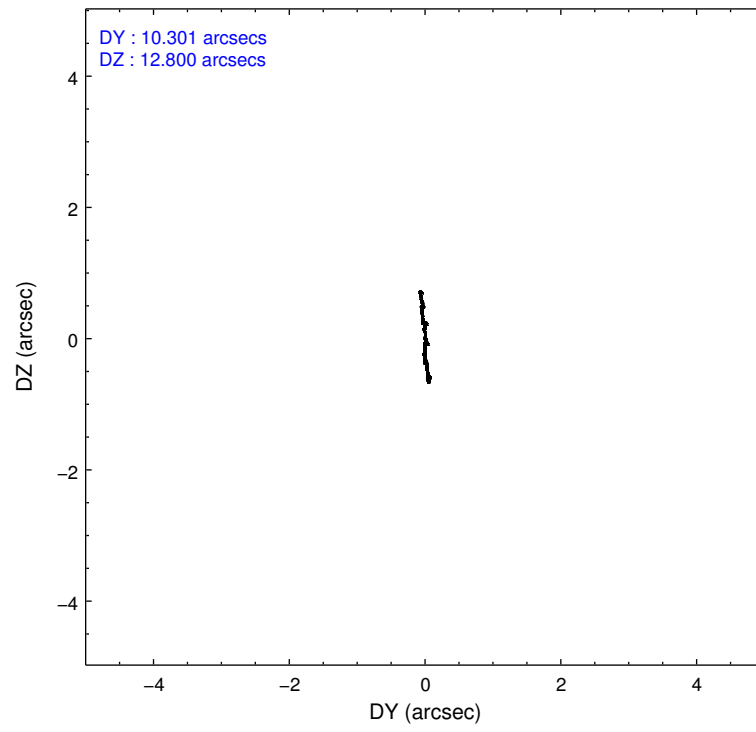
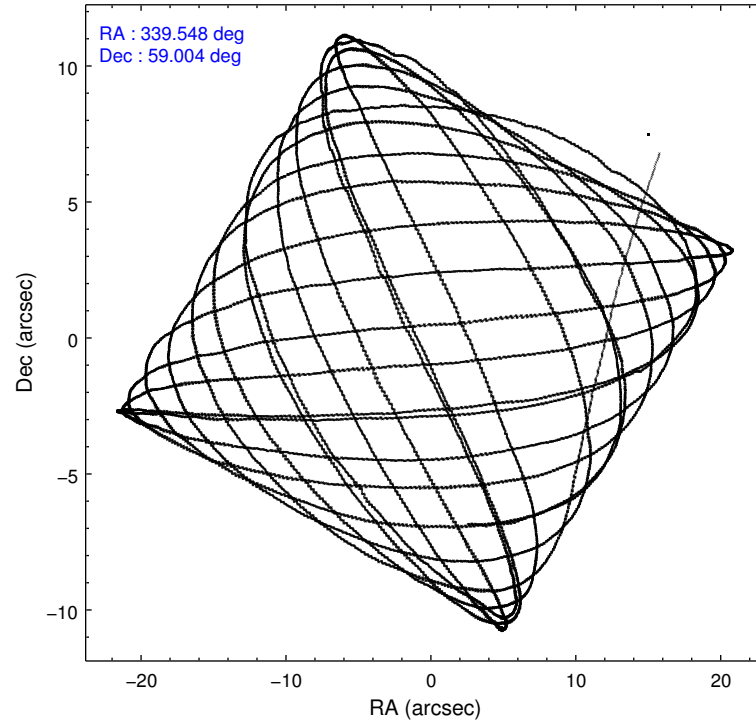
2.1.4 Events

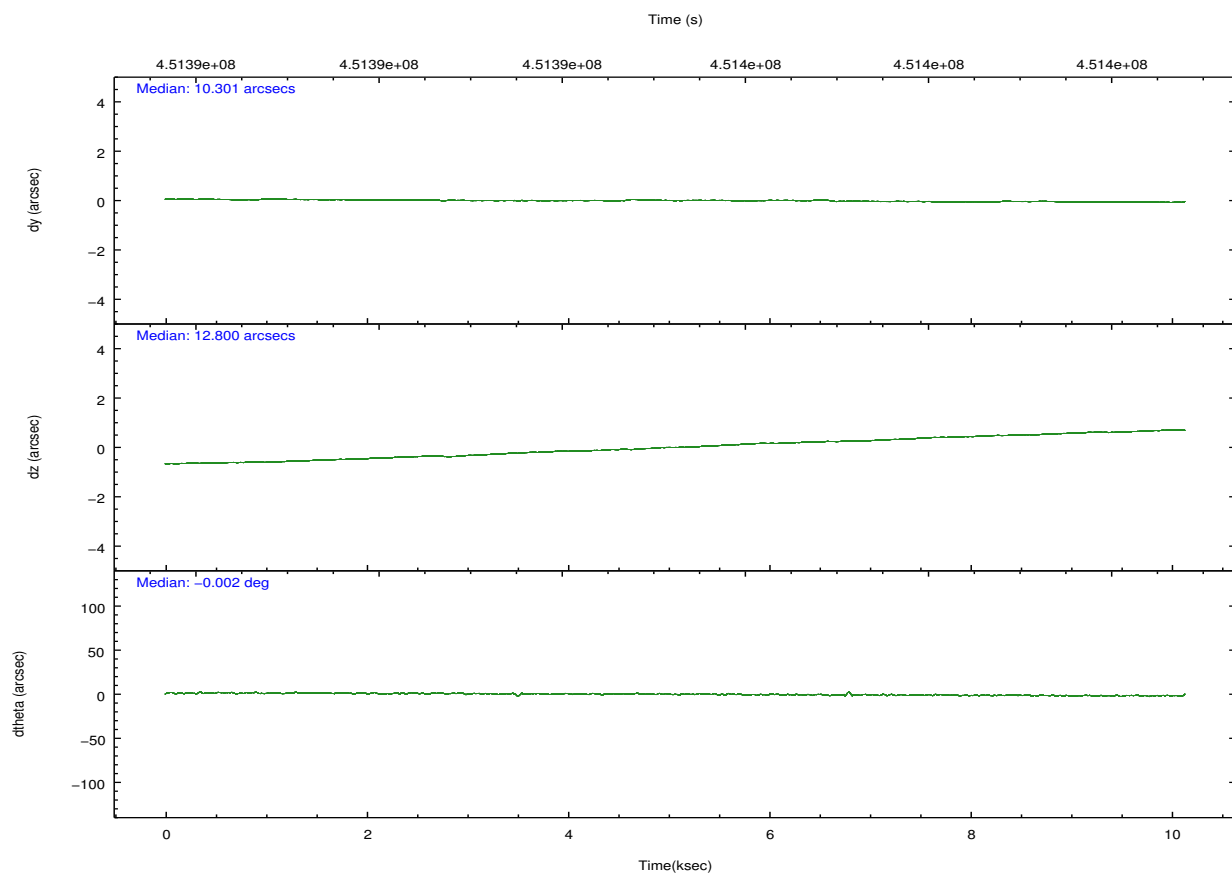
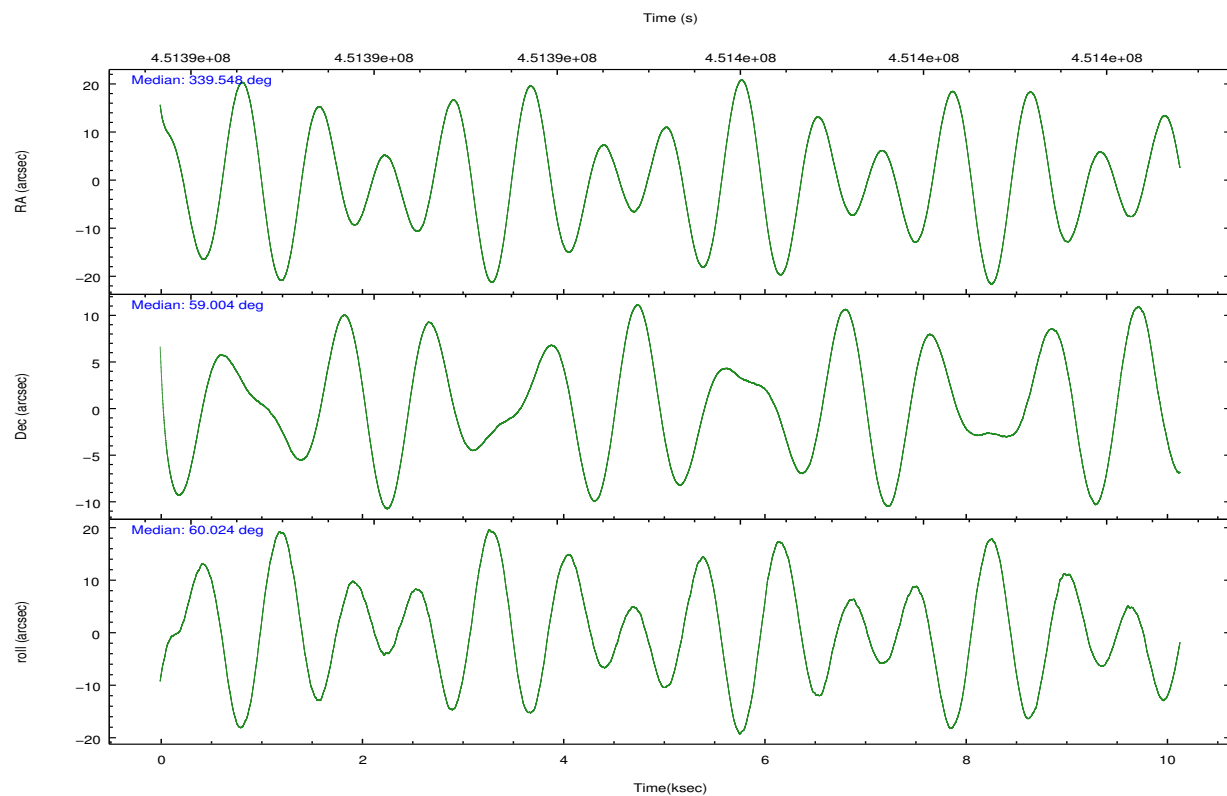
	ccd 0	ccd 1	ccd 2	ccd 3	ccd 6	ccd 7		ccd 0	ccd 1	ccd 2	ccd 3	ccd 6	ccd 7
level 1 events	52276	51742	56702	54842	57905	61891	grade 0 events	2423	2201	2314	2123	2402	2731
rejected events	45891	45262	50643	49040	51222	32652		4%	4%	4%	3%	4%	4%
rejected %	87%	87%	89%	89%	88%	52%	grade 1 events	18	40	22	40	48	85
								0%	0%	0%	0%	0%	0%
							grade 2 events	1484	1489	1513	1323	1561	6327
								2%	2%	2%	2%	2%	10%
							grade 3 events	691	708	560	626	632	2608
								1%	1%	0%	1%	1%	4%
							grade 4 events	593	699	587	592	688	2599
								1%	1%	1%	1%	1%	4%
							grade 5 events	2015	2261	1972	2400	2390	6427
								3%	4%	3%	4%	4%	10%
							grade 6 events	1207	1388	1087	1139	1408	15009
								2%	2%	1%	2%	2%	24%
							grade 7 events	43845	42956	48647	46599	48776	26105
								83%	83%	85%	84%	84%	42%

2.2 Compared Parameters

Parameter	Planned	Actual	Parameter	Planned	Actual
Instrument	ACIS	ACIS	Obspar format version number	7	7
Detector	ACIS-012367	ACIS-012367	Obspar file type	PREDICTED	ACTUAL
Grating	NONE	NONE	Obspar update status	NONE	UPDATED
Data mode	FAINT	FAINT	CCD I0 on	Y	Y
Observation mode	POINTING	POINTING	CCD I1 on	Y	Y
[deg] Pointing RA	339.548320	339.5481611532911	CCD I2 on	Y	Y
[deg] Pointing Dec	58.976326	59.00381941024411	CCD I3 on	Y	Y
[deg] Pointing Roll	59.815785	60.02459596660297	CCD S0 on	N	N
[mm] SIM focus pos	-0.782348	-0.7809083437167272	CCD S1 on	N	N
[mm] SIM defocus	0	0.001439871863259334	CCD S2 on	O2	Y
[mm] SIM translation stage pos	-233.592463	-233.5874344608287	CCD S3 on	O1	Y
[mm] SIM translation stage offset	0	-0.005018542100998502	CCD S4 on	N	N
[s] Observation start time (MET)	451390300.184000	451389081.38059	CCD S5 on	N	N
Observation start date	2012-04-21T10:10:34	2012-04-21T09:51:21	Number of optional ACIS chips dropped	0	0
[s] Observation end time (MET)	451400300.184000	451400578.8062	On-chip summing requested	N	N
Observation end date	2012-04-21T12:57:14	2012-04-21T13:02:58	Subarray requested	NONE	NONE
Read mode	TIMED	TIMED	Alternating exposures requested	N	N
			[s] Primary exposure time	0.000000	3.2

2.3 Aspect



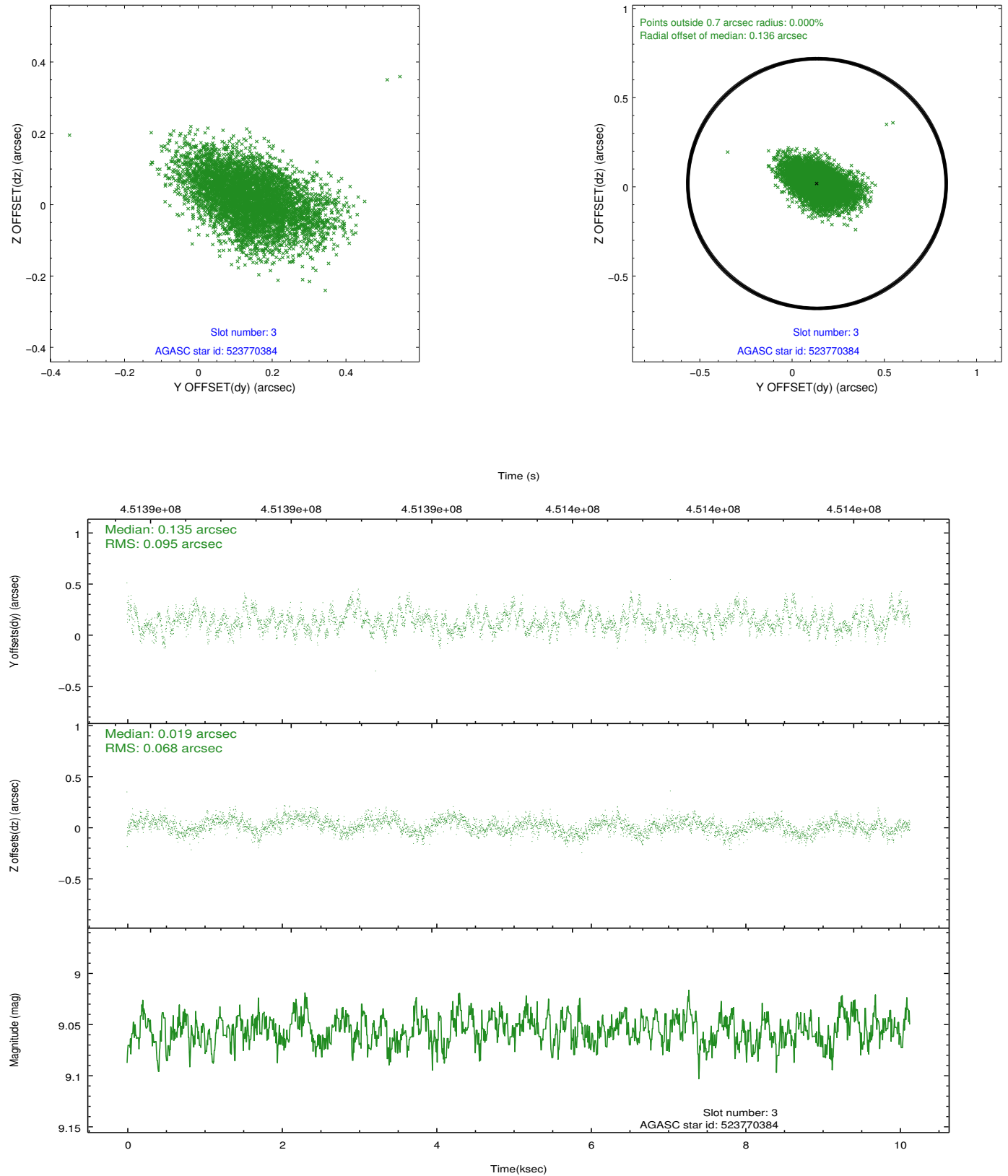


Slot Statistics

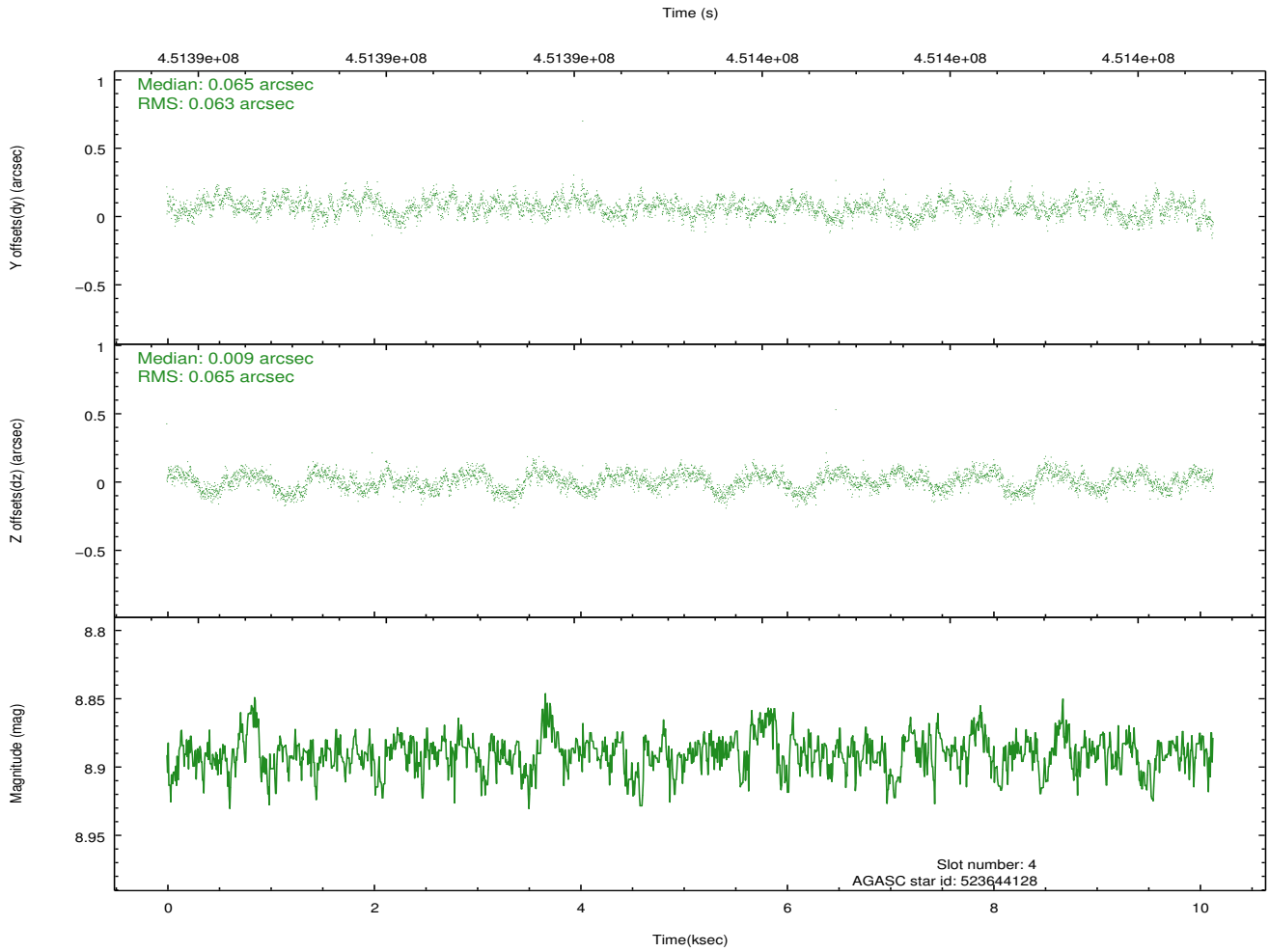
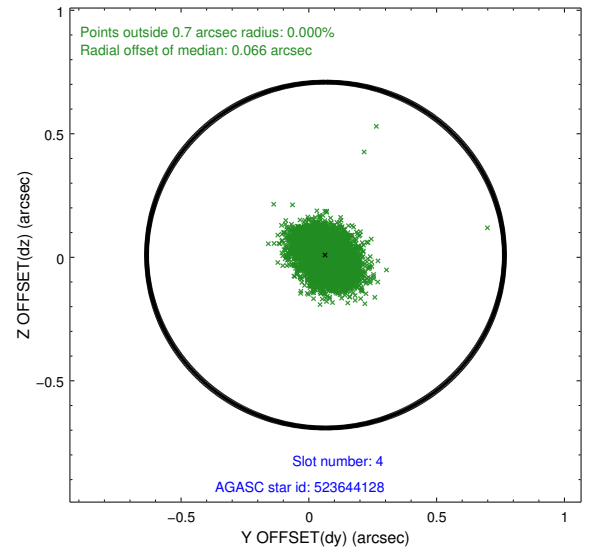
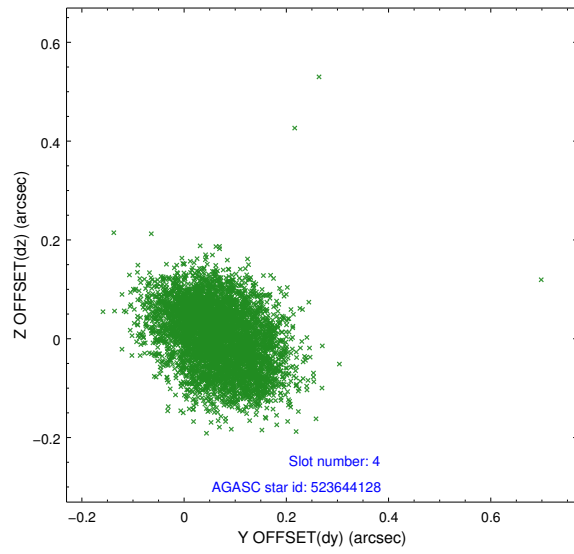
slot	status	id	mag	n_pts	med_dy	med_dz	dr1	dr2	ra	dec	mean_y	mean_z
0	FID	ACIS-I-1	7.13	2471	0.071	-0.008	0.013	0.021	0.000000	0.000000	929.36	-836.36
1	FID	ACIS-I-5	7.11	2473	-0.194	0.086	0.008	0.014	0.000000	0.000000	-1818.72	1060.98
2	FID	ACIS-I-6	7.13	2471	0.030	-0.010	0.013	0.021	0.000000	0.000000	394.31	1705.97
3	GUIDE	523770384	9.06	4939	0.135	0.019	0.120	0.211	341.103064	59.167460	2067.20	-2116.02
4	GUIDE	523644128	8.89	4945	0.065	0.009	0.098	0.151	338.709613	58.802422	-1318.83	1039.79
5	GUIDE	523636464	8.06	4944	-0.117	-0.232	0.068	0.113	339.165155	59.596215	1578.44	1727.16
6	GUIDE	523641336	8.43	4944	0.068	0.147	0.087	0.138	339.418208	58.643359	-1157.93	-390.97
7	GUIDE	523766496	9.16	4936	-0.161	0.063	0.090	0.145	340.447562	59.448374	2305.68	-562.01

2.4 Star Slots

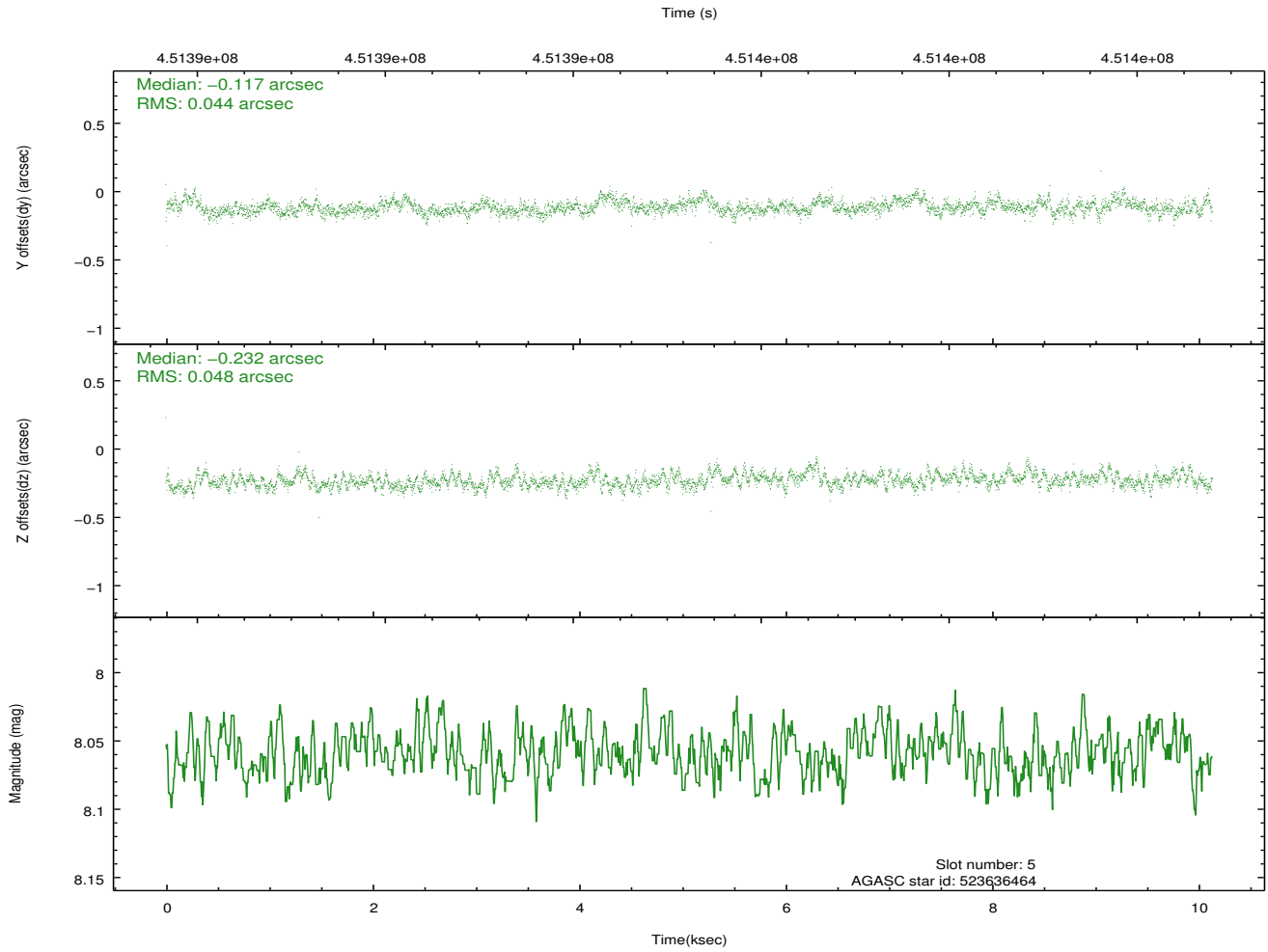
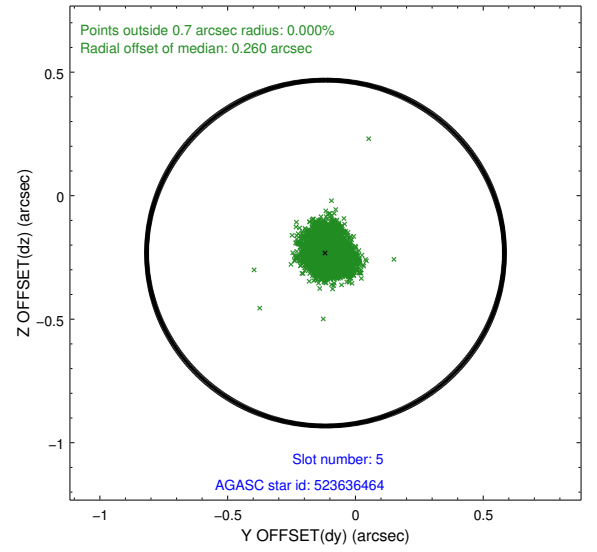
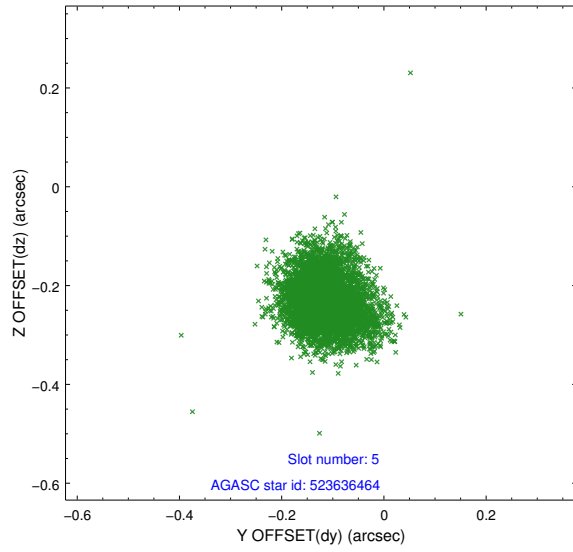
2.4.1 Slot 3



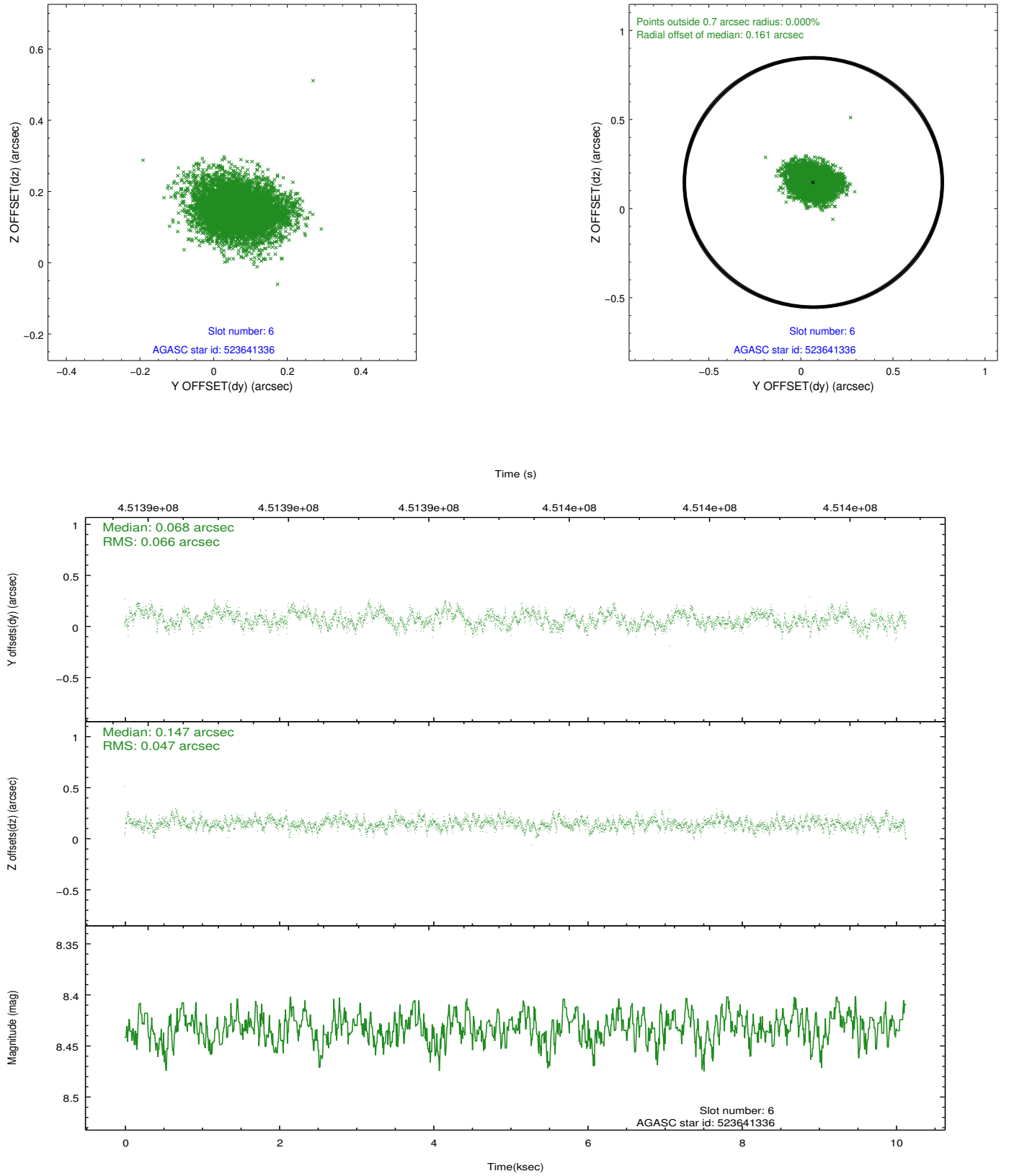
2.4.2 Slot 4



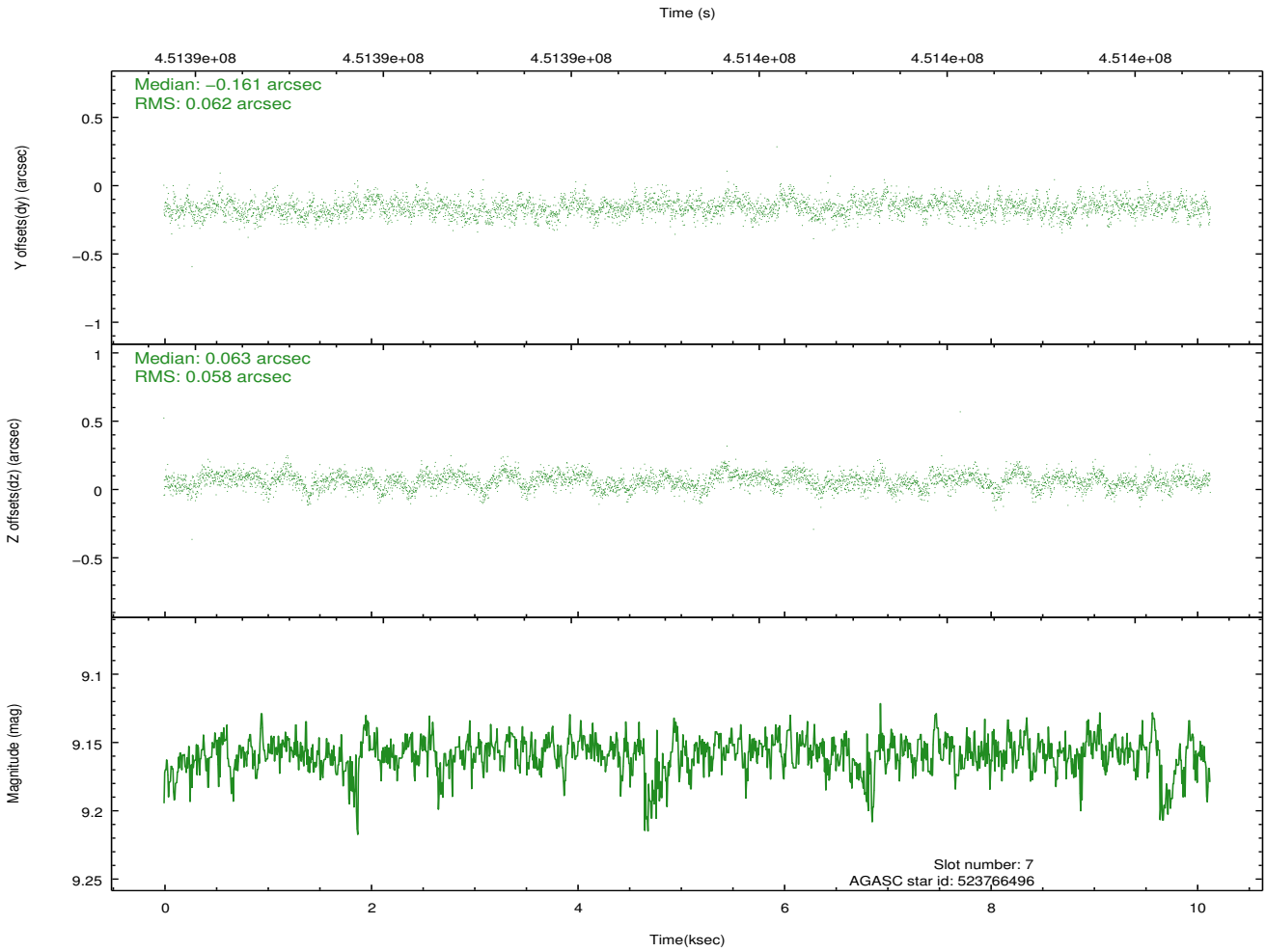
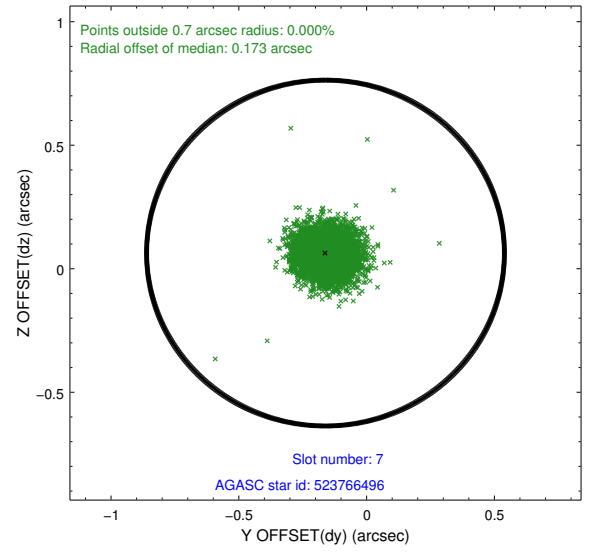
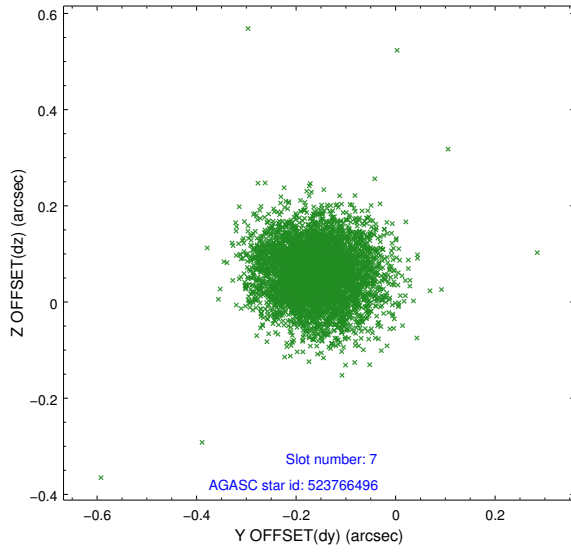
2.4.3 Slot 5



2.4.4 Slot 6

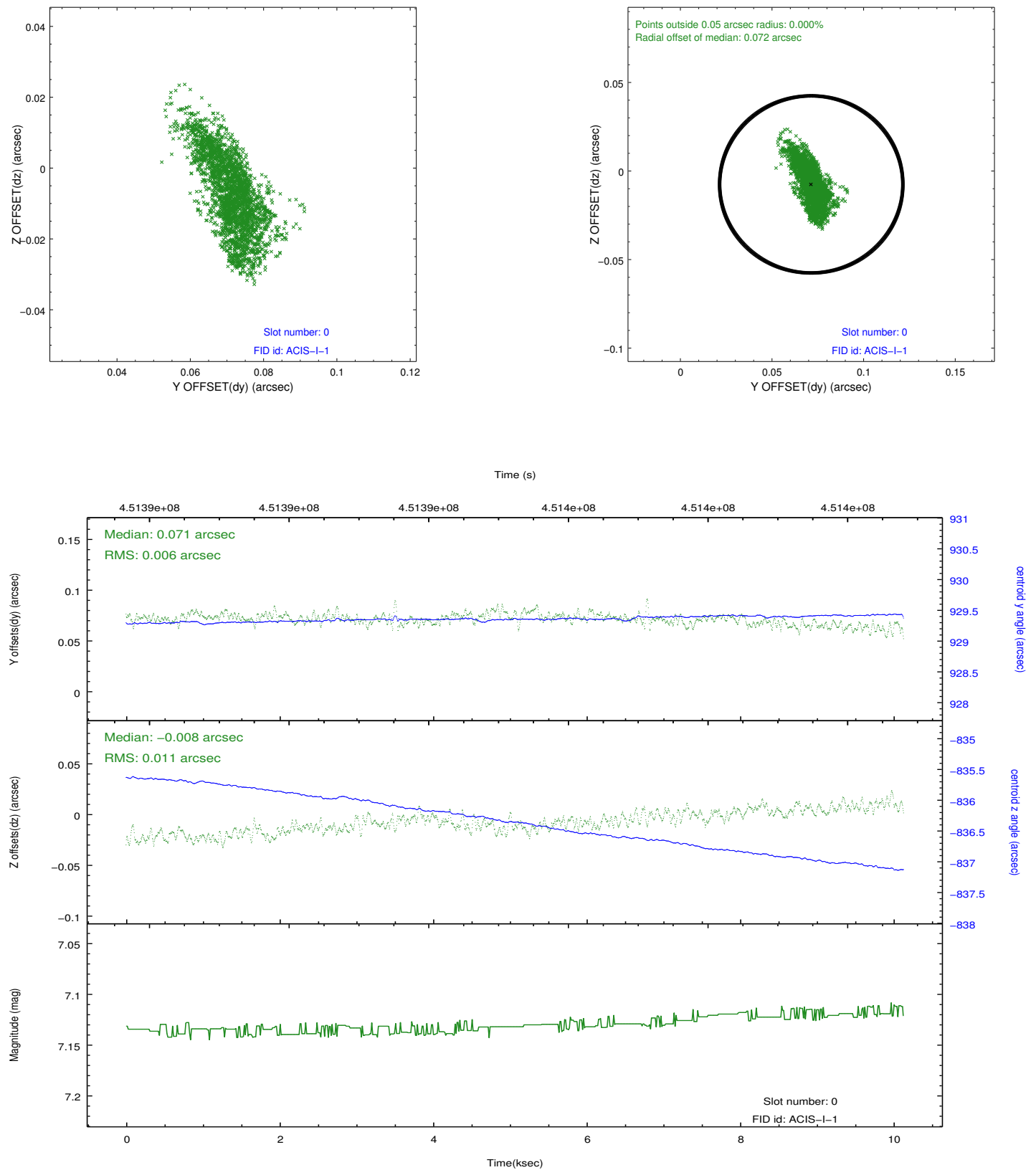


2.4.5 Slot 7

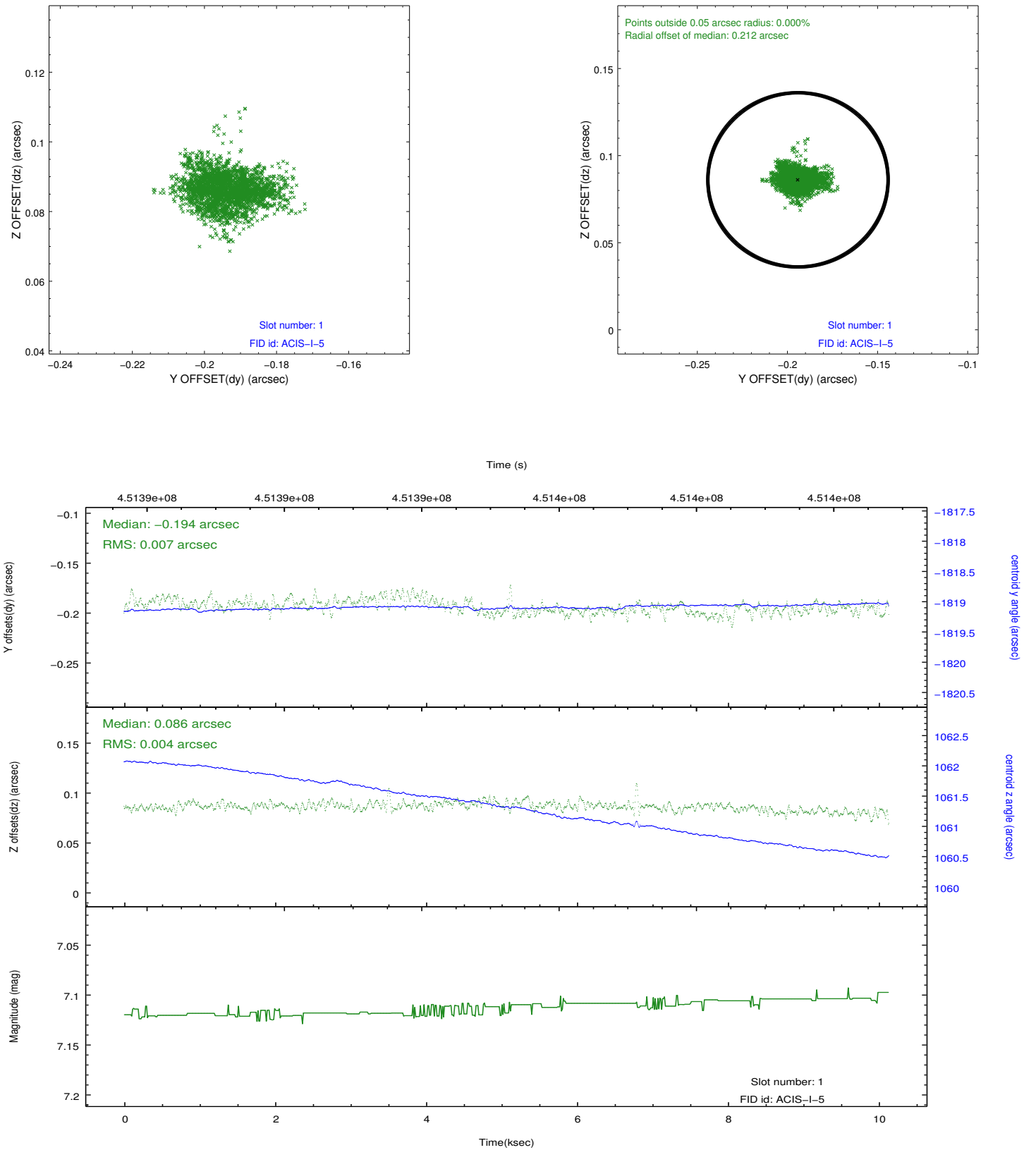


2.5 FID Slots

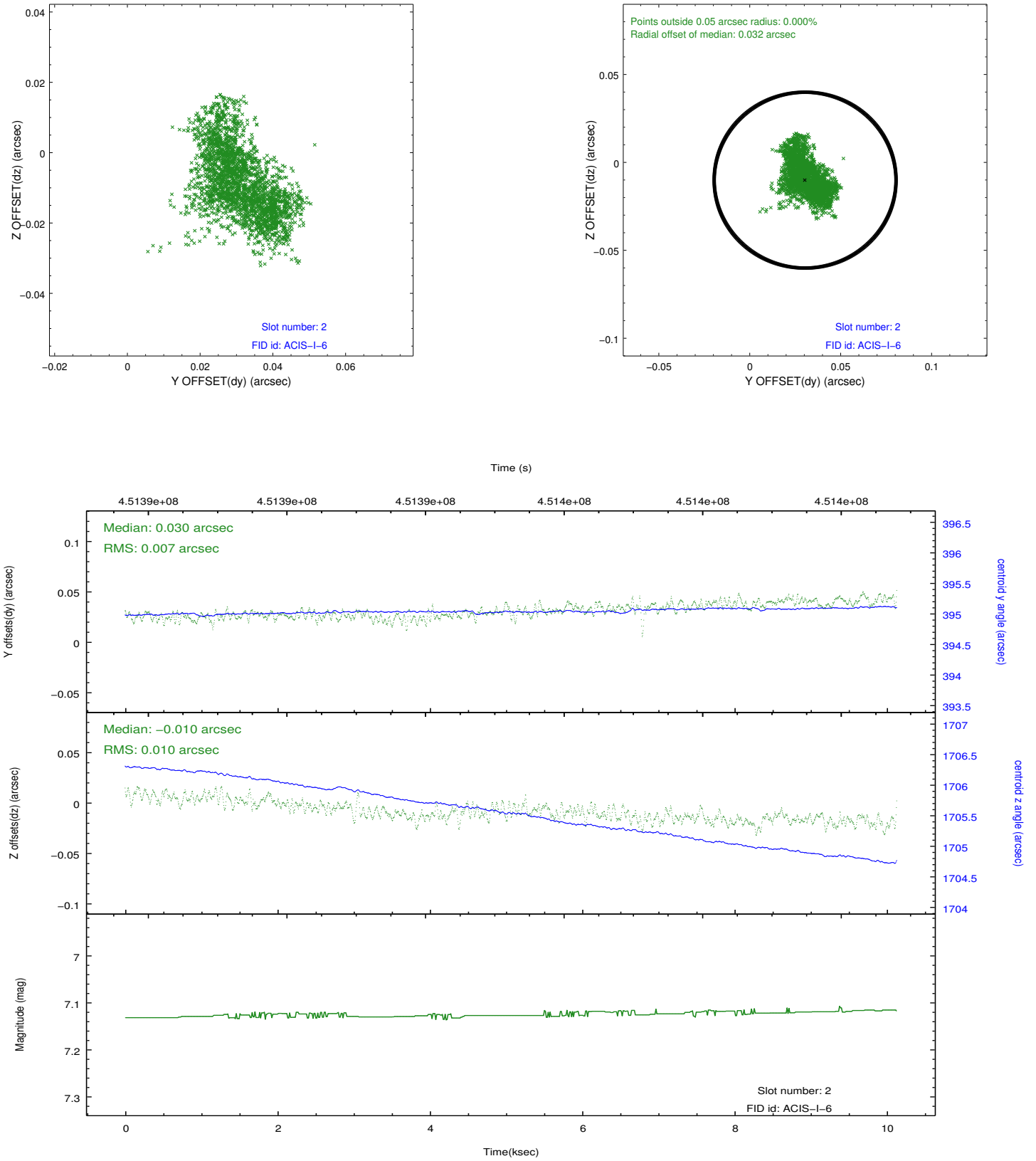
2.5.1 Slot 0



2.5.2 Slot 1



2.5.3 Slot 2



A Summary

A.1 Status

V&V Scientist	Beth Sundheim
V&V Date (YYYY-MM-DD)	2012.04.22
V&V Edition	1
V&V Disposition and Status	OK
V&V Charge Time	9.9615999629498

A.2 Comments