

V&V Reference Report

L2 ASCDS Version : 8.4.3.1

Observation 13585 - L2 Version 2
Chandra X-Ray Center

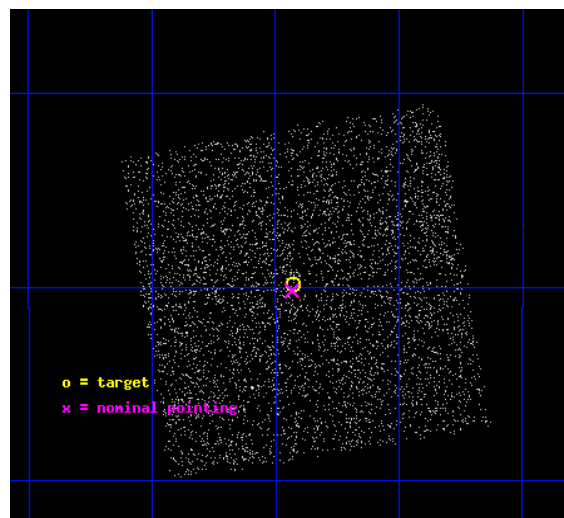
L2 Processing Date : Mar 2 2012

Contents

1	Front	2
2	OBI	3
2.1	OBI	3
2.1.1	Images	3
2.1.2	Bias	3
2.1.3	Parameters	4
2.1.4	Events	4
2.2	Compared Parameters	5
2.3	Aspect	6
2.4	Star Slots	9
2.4.1	Slot 3	9
2.4.2	Slot 4	10
2.4.3	Slot 5	11
2.4.4	Slot 6	12
2.4.5	Slot 7	13
2.5	FID Slots	14
2.5.1	Slot 0	14
2.5.2	Slot 1	15
2.5.3	Slot 2	16
A	Summary	17
A.1	Status	17
A.2	Comments	17

1 Front

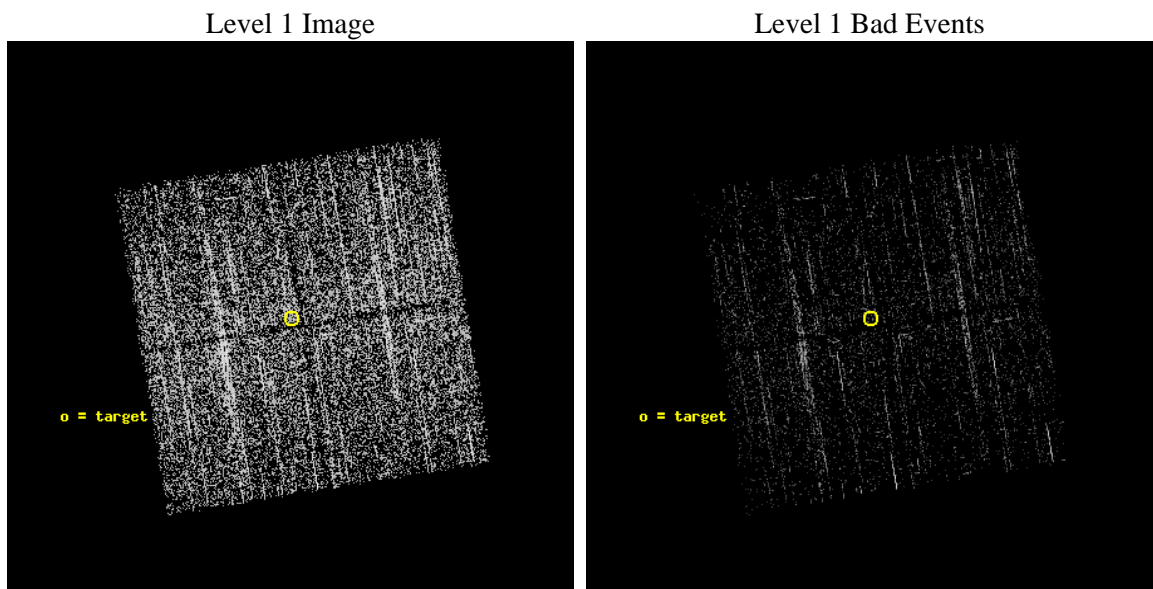
seq_num	401361	Sequence number
obs_id	13585	Observation id
title	Completing the Galactic Bulge Survey: categorizing the plethora of faint X-ray sources in the Galactic Bulge	Proposal title
observer	dr P Jonker	Principal investigator
object	GBS13-6	Source name
dtcycle	0	
cycle	P	events from which exps? Prim/Second/Both
ra_targ	263.232036	Observer's specified target RA [deg]
dec_targ	-30.497619	Observer's specified target Dec [deg]
ra_nom	263.23358322914	Nominal RA [deg]
dec_nom	-30.503353510706	Nominal Dec [deg]
roll_nom	260.77059822893	Nominal Roll [deg]
revision	2	Processing version of data
ontime	1971.6000151634	Sum of GTIs [s]
livetime	1945.8396094945	Livetime [s]
ontime0	1971.6000151634	Sum of GTIs [s]
ontime1	1971.6000151634	Sum of GTIs [s]
ontime2	1971.6000151634	Sum of GTIs [s]
ontime3	1971.6000151634	Sum of GTIs [s]
l2events	5607	Number of level 2 events



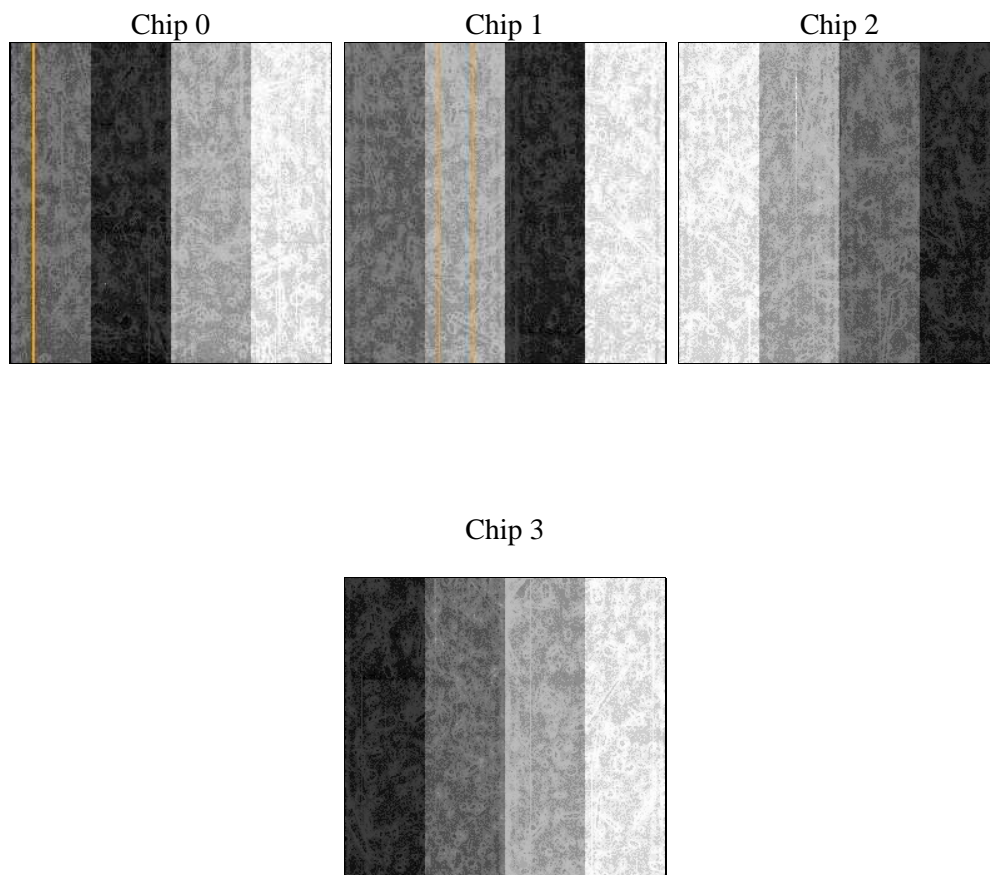
2 OBI

2.1 OBI

2.1.1 Images



2.1.2 Bias



2.1.3 Parameters

obi_num	0	Obi number	sched_exp_time	2180.000000	[s] Scheduled observation exposure time
ascdsver	8.4.3	Processing system revision	ontime	1971.6000151634	Sum of GTIs [s]
caldsver	4.4.8	 	ontime0	1971.6000151634	Sum of GTIs [s]
date	2012-03-02T14:41:22	Date and time of file creation	ontime1	1971.6000151634	Sum of GTIs [s]
revision	2	Processing version of data	ontime2	1971.6000151634	Sum of GTIs [s]
			ontime3	1971.6000151634	Sum of GTIs [s]
			l1events	46714	Number of level 1 events

2.1.4 Events

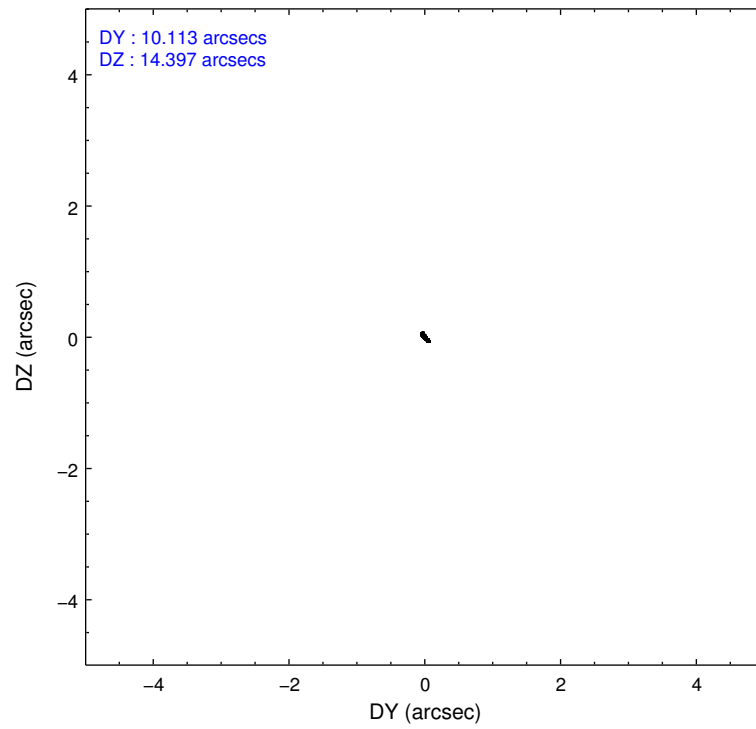
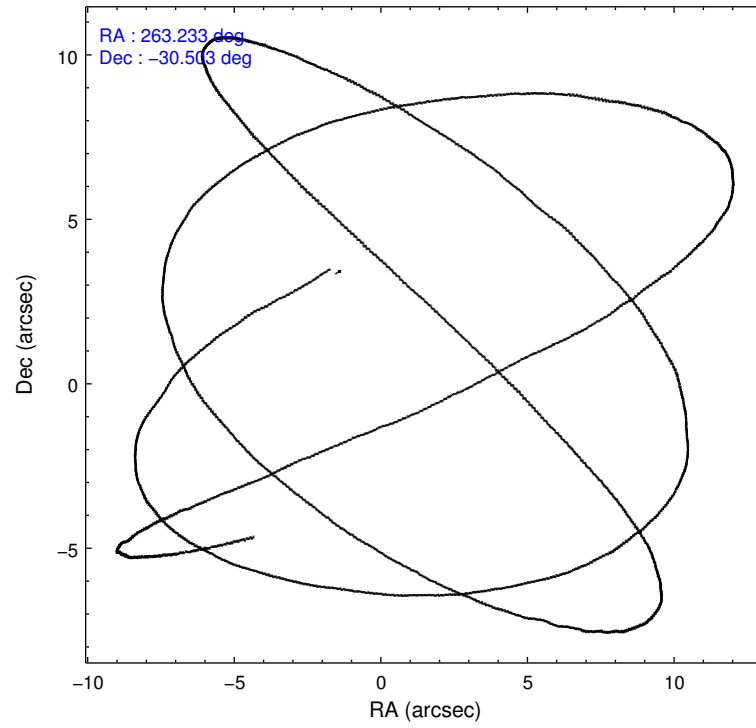
	ccd 0	ccd 1	ccd 2	ccd 3
level 1 events	10940	12466	12162	11146
rejected events	9279	10735	10540	9572
rejected %	84%	86%	86%	85%

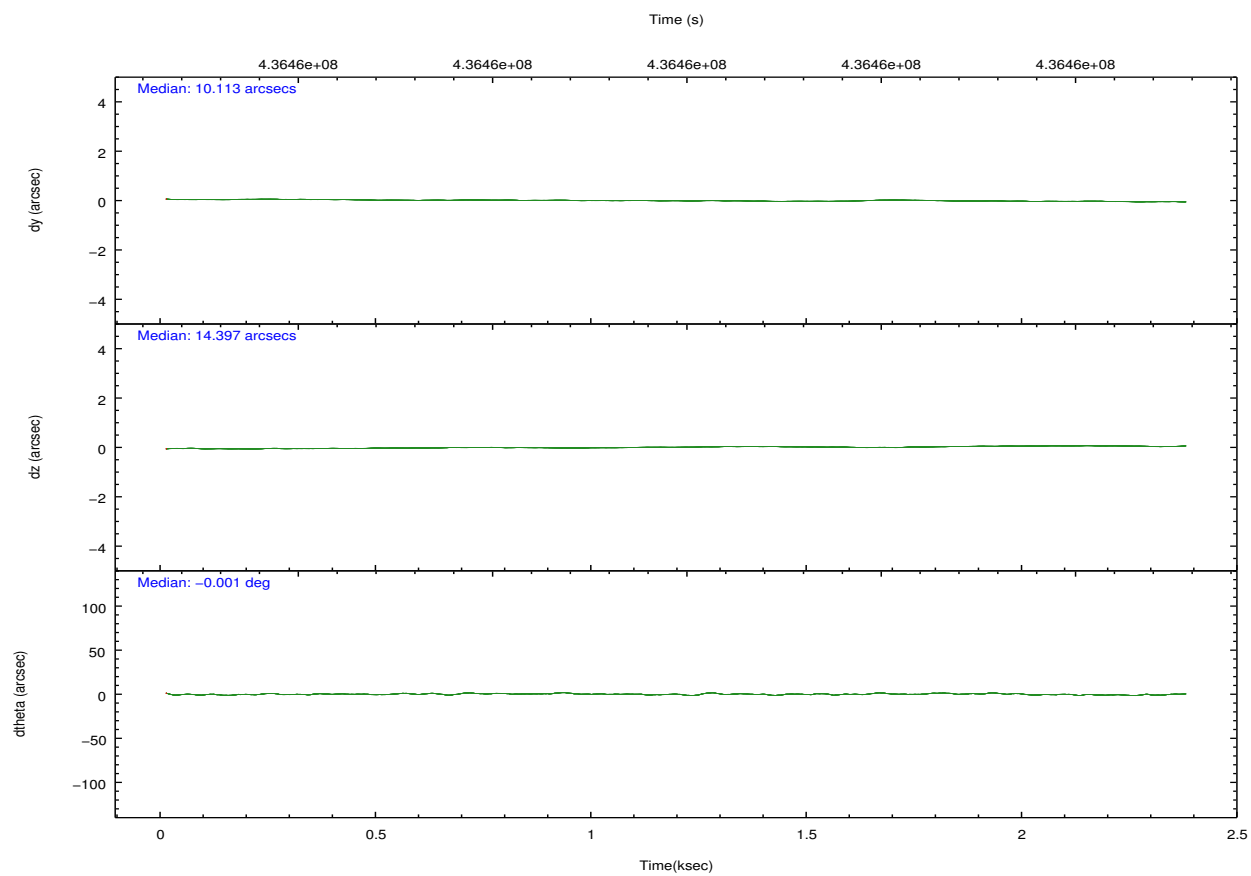
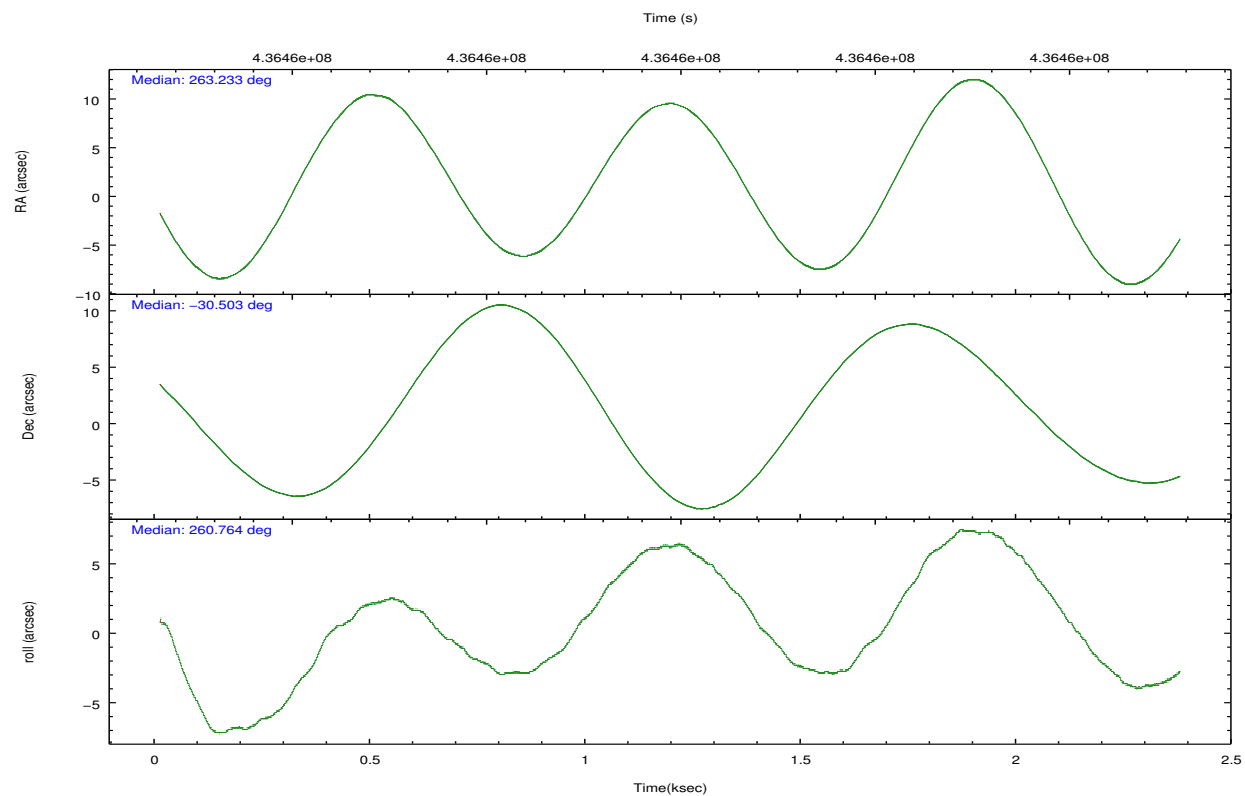
	ccd 0	ccd 1	ccd 2	ccd 3
grade 0 events	652	697	678	629
	5%	5%	5%	5%
grade 1 events	2	3	11	7
	0%	0%	0%	0%
grade 2 events	411	358	351	343
	3%	2%	2%	3%
grade 3 events	165	165	162	148
	1%	1%	1%	1%
grade 4 events	142	174	159	146
	1%	1%	1%	1%
grade 5 events	575	604	550	581
	5%	4%	4%	5%
grade 6 events	296	342	277	310
	2%	2%	2%	2%
grade 7 events	8697	10123	9974	8982
	79%	81%	82%	80%

2.2 Compared Parameters

Parameter	Planned	Actual	Parameter	Planned	Actual
Instrument	ACIS	ACIS	Obspar format version number	7	7
Detector	ACIS-0123	ACIS-0123	Obspar file type	PREDICTED	ACTUAL
Grating	NONE	NONE	Obspar update status	NONE	UPDATED
Data mode	VFAINT	VFAINT	Number of optional ACIS chips dropped	0	0
Observation mode	POINTING	POINTING	On-chip summing requested	N	N
[deg] Pointing RA	263.222395	263.2335832291359	Subarray requested	NONE	NONE
[deg] Pointing Dec	-30.477477	-30.50335351070552	Alternating exposures requested	N	N
[deg] Pointing Roll	260.556237	260.770598228931	[s] Primary exposure time	0.000000	3.1
[mm] SIM focus pos	-0.782348	-0.7809083437167272			
[mm] SIM defocus	0	0.001439871863259334			
[mm] SIM translation stage pos	-233.592463	-233.5874344608287			
[mm] SIM translation stage offset	0	-0.005018542100998502			
[s] Observation start time (MET)	436460489.184000	436460113.4412			
Observation start date	2011-10-31T15:00:23	2011-10-31T14:55:13			
[s] Observation end time (MET)	436462669.184000	436462803.55384			
Observation end date	2011-10-31T15:36:43	2011-10-31T15:40:03			
Read mode	TIMED	TIMED			

2.3 Aspect



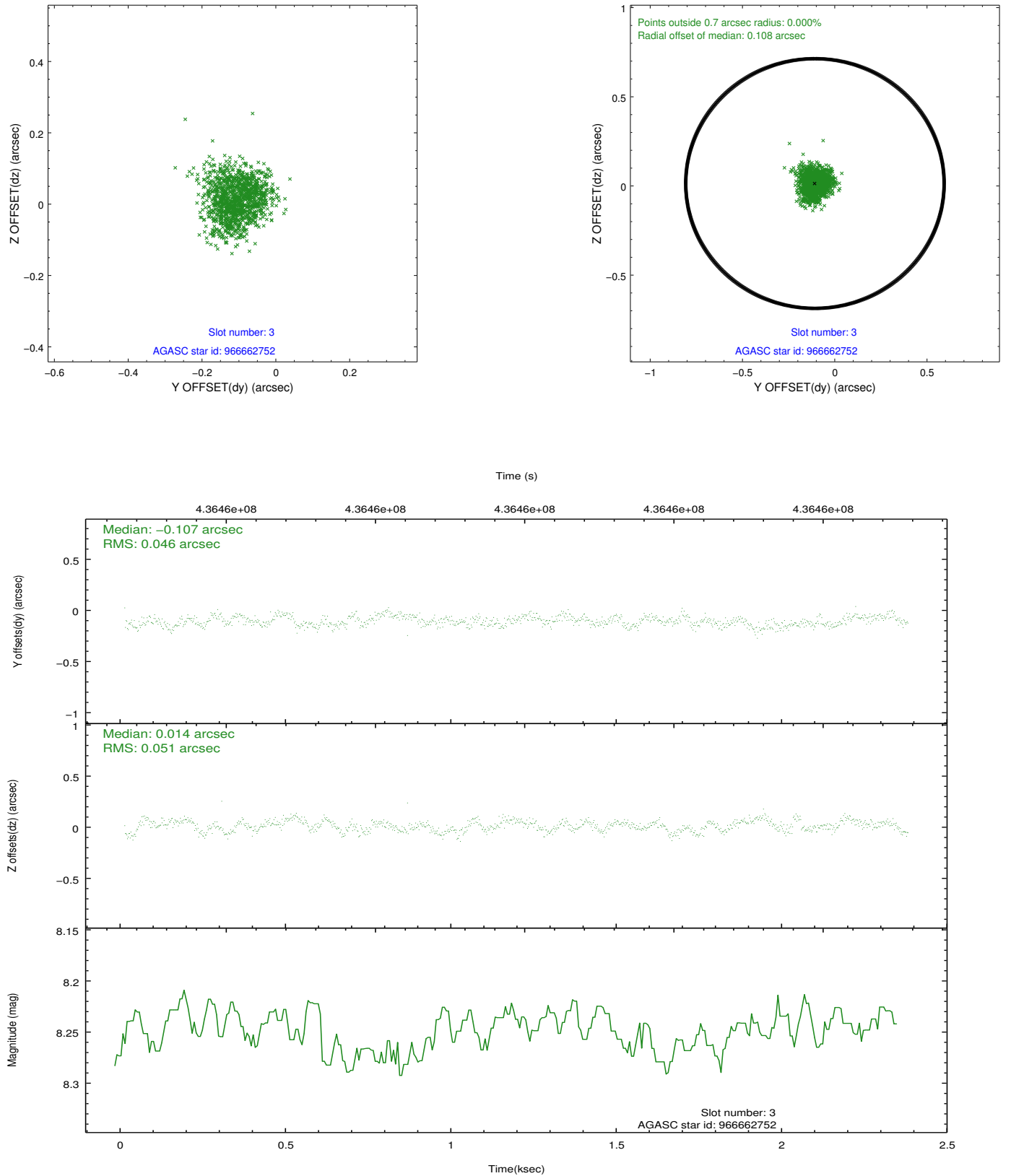


Slot Statistics

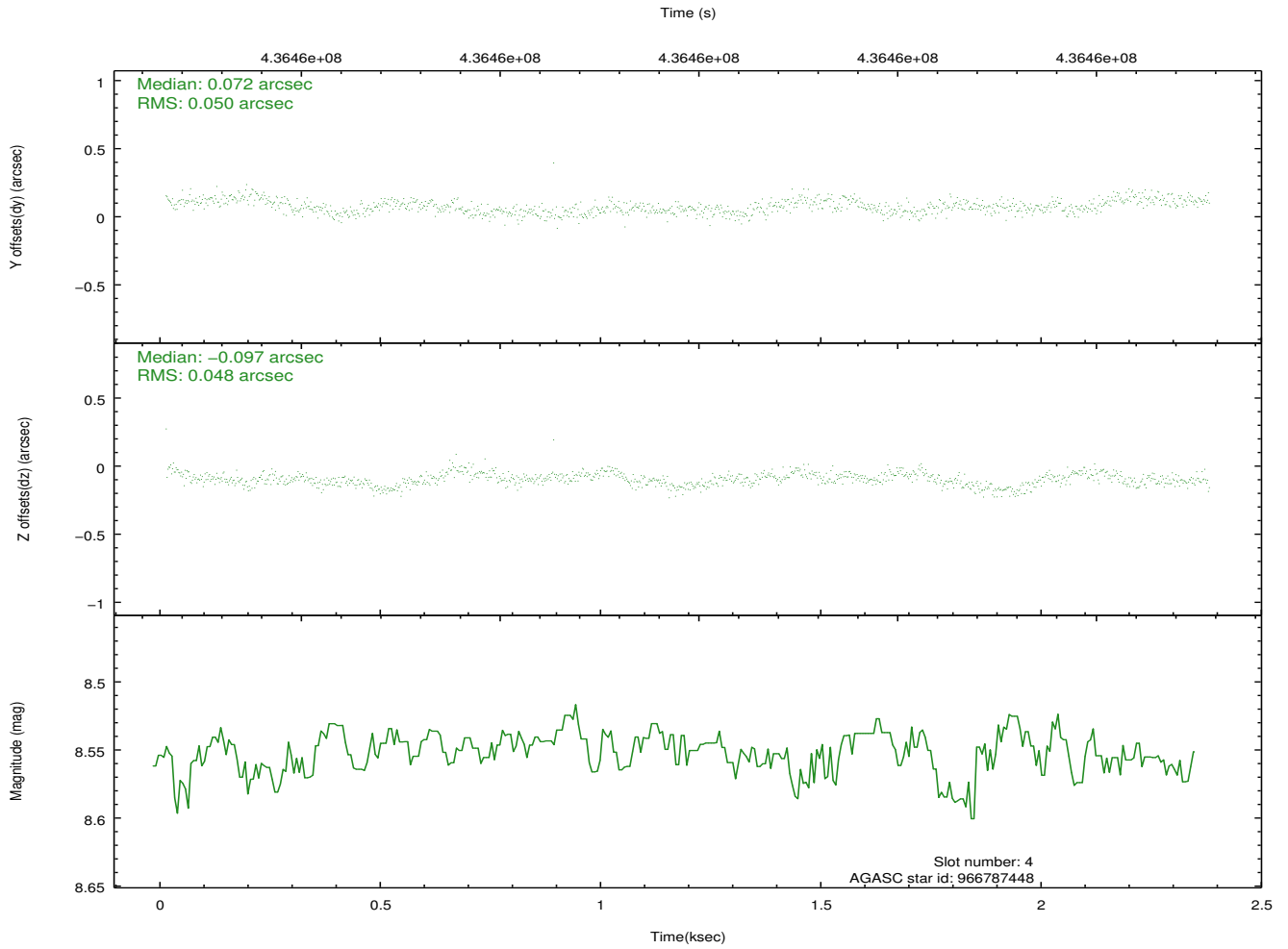
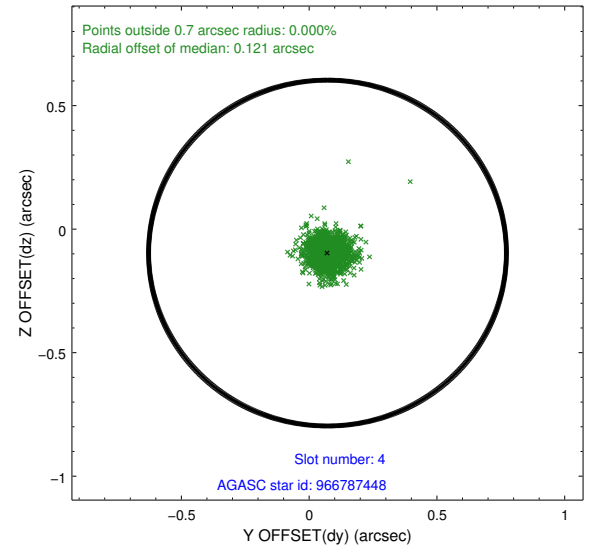
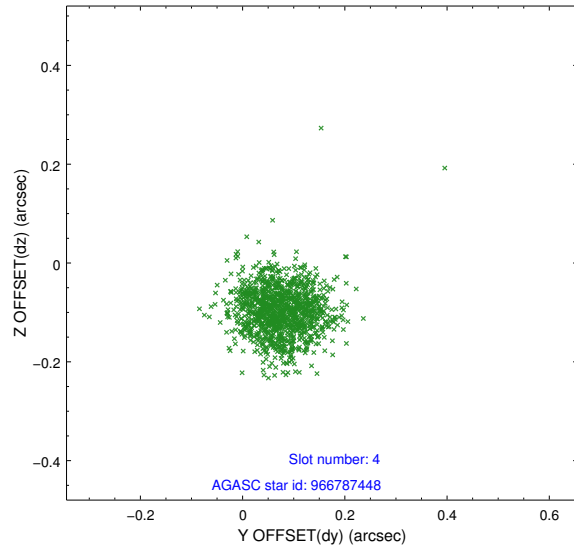
slot	status	id	mag	n_pts	med_dy	med_dz	dr1	dr2	ra	dec	mean_y	mean_z
0	FID	ACIS-I-2	6.95	578	-0.021	-0.100	0.008	0.015	0.000000	0.000000	-764.74	-844.43
1	FID	ACIS-I-5	7.03	578	-0.179	0.059	0.008	0.013	0.000000	0.000000	-1820.19	1058.22
2	FID	ACIS-I-6	7.04	578	0.106	0.109	0.006	0.010	0.000000	0.000000	392.19	1705.84
3	GUIDE	966662752	8.25	1156	-0.107	0.014	0.073	0.115	262.898473	-30.245665	-656.98	-1129.77
4	GUIDE	966787448	8.55	1156	0.072	-0.097	0.073	0.115	263.341993	-31.095036	2131.73	728.40
5	GUIDE	966787712	8.38	1156	0.085	0.028	0.056	0.091	263.530944	-31.066254	1937.38	1288.19
6	GUIDE	966791064	7.78	1156	-0.166	0.067	0.054	0.090	263.920275	-30.338943	-840.36	2059.99
7	GUIDE	966662760	8.69	1155	0.106	-0.014	0.078	0.128	262.815203	-30.091834	-1160.11	-1476.21

2.4 Star Slots

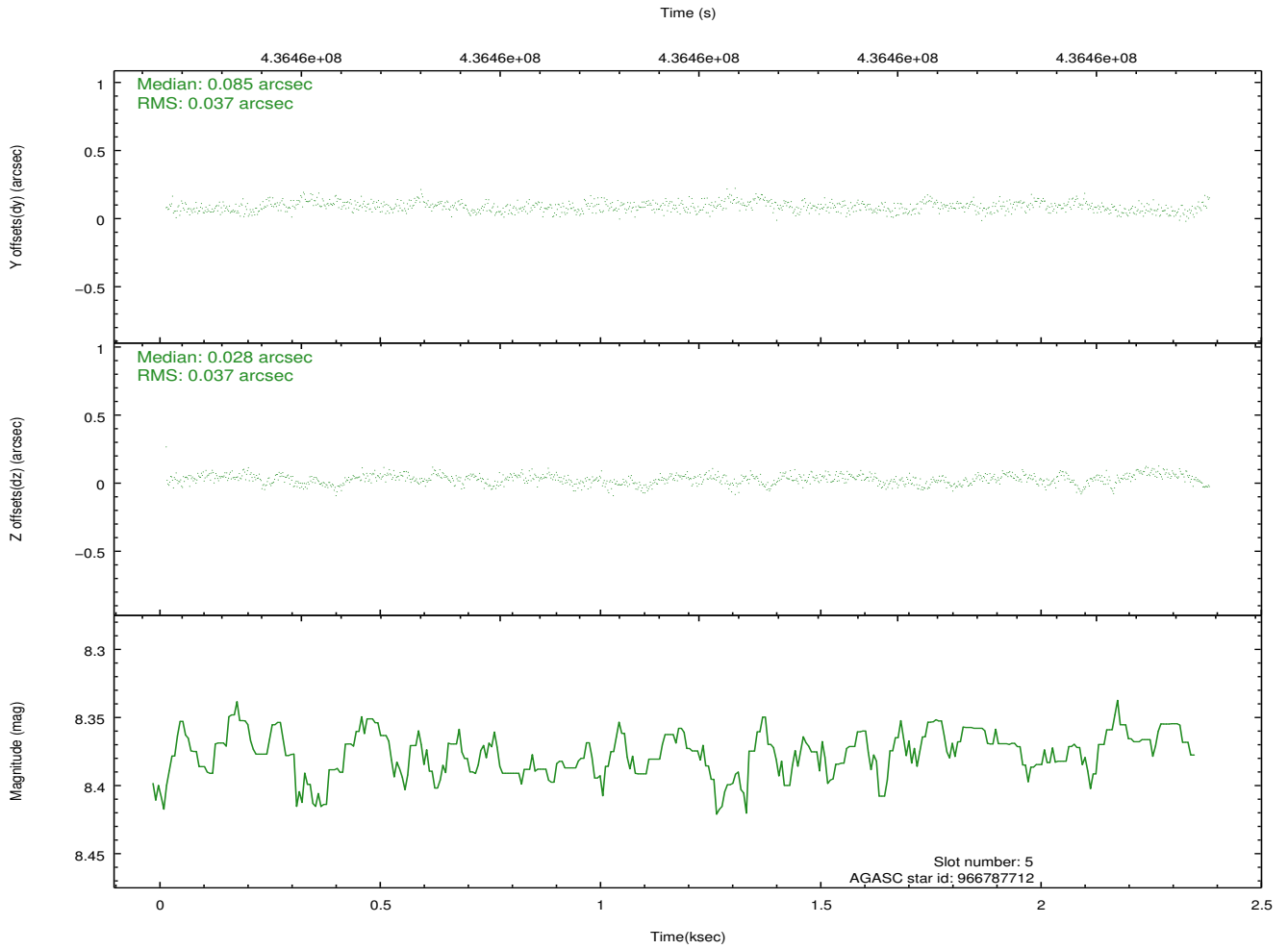
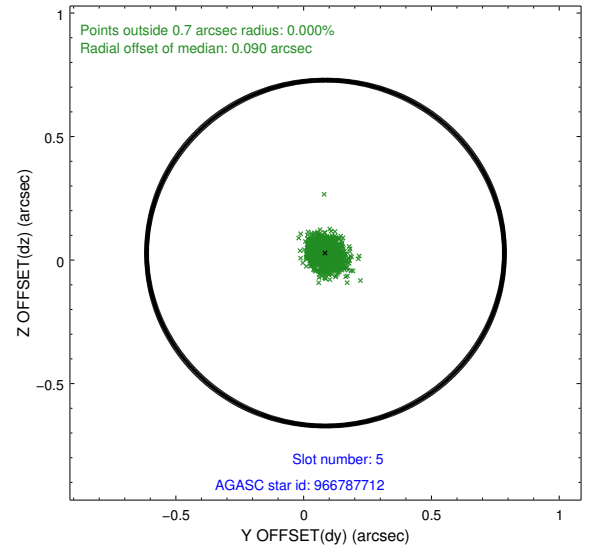
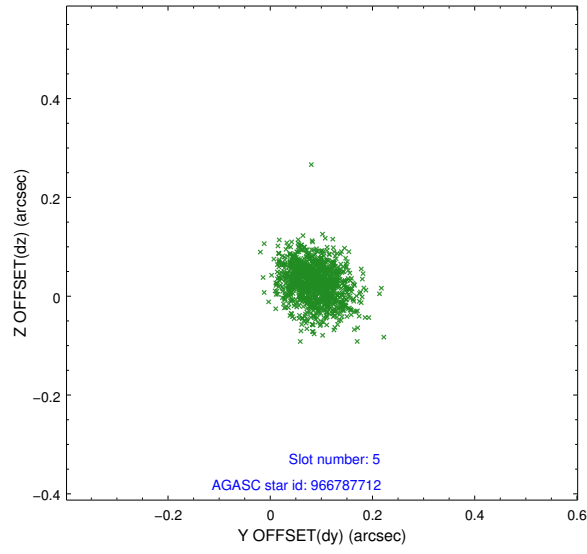
2.4.1 Slot 3



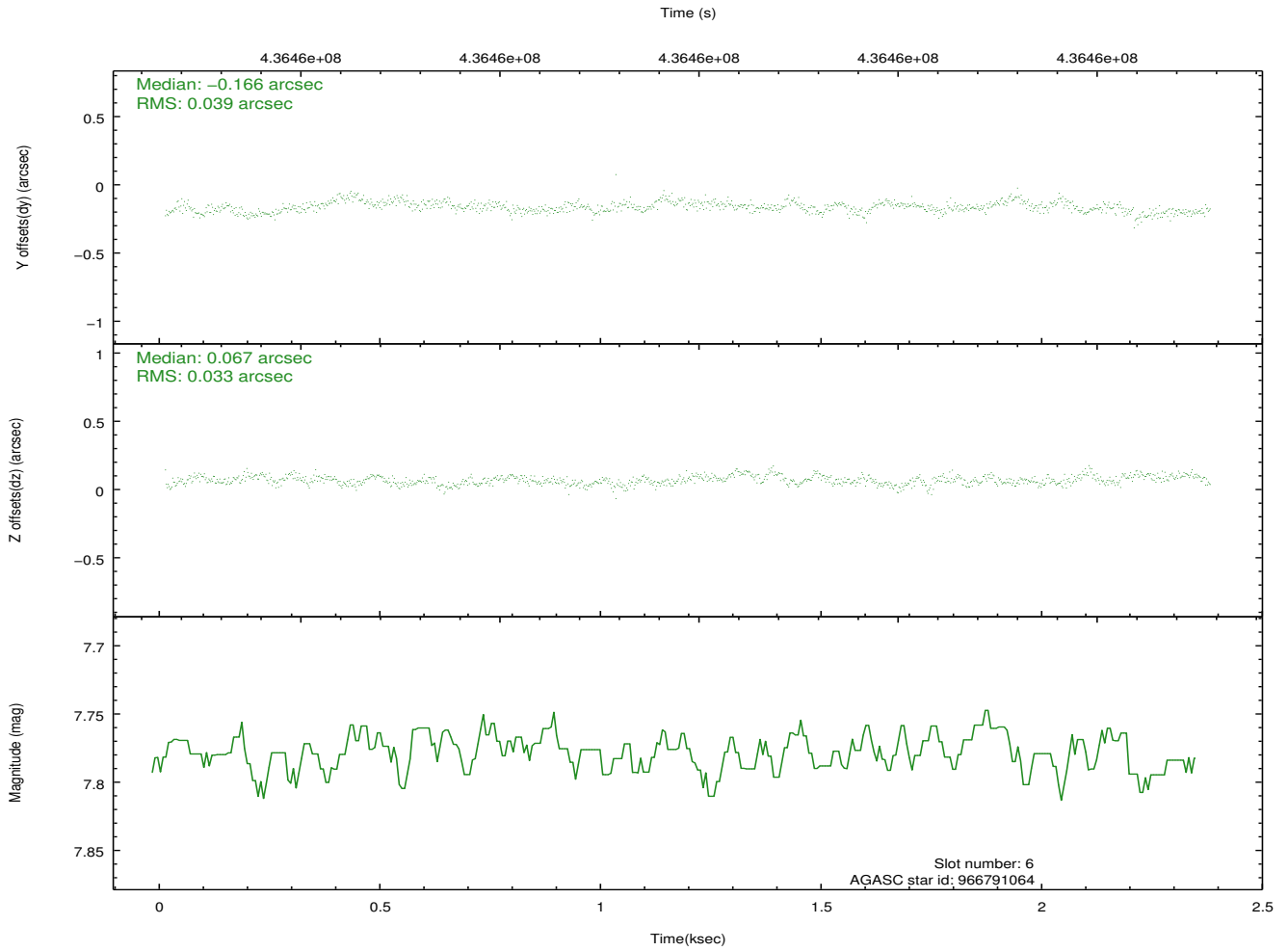
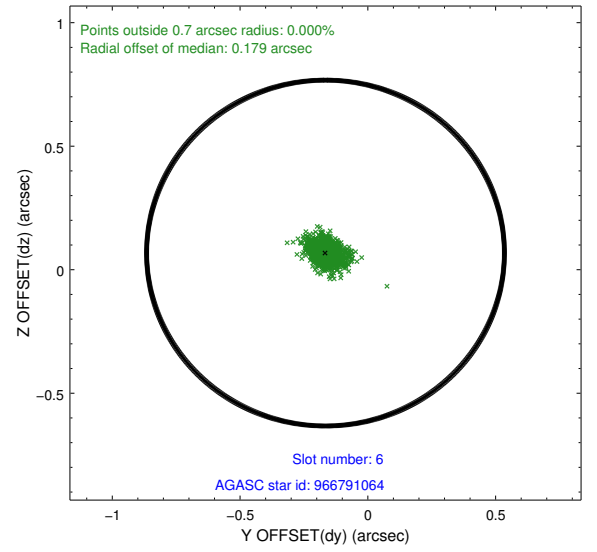
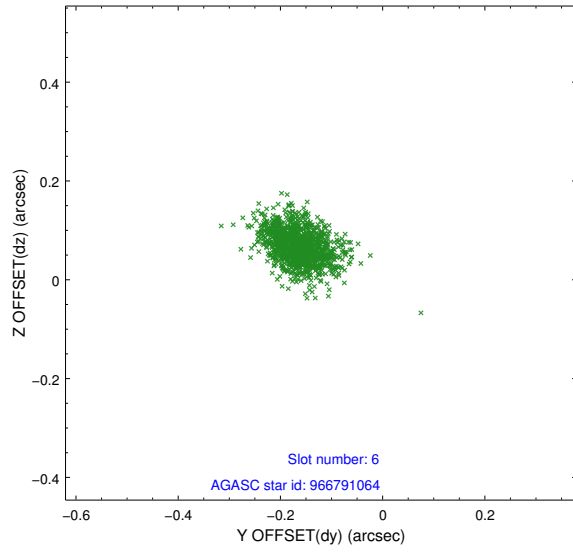
2.4.2 Slot 4



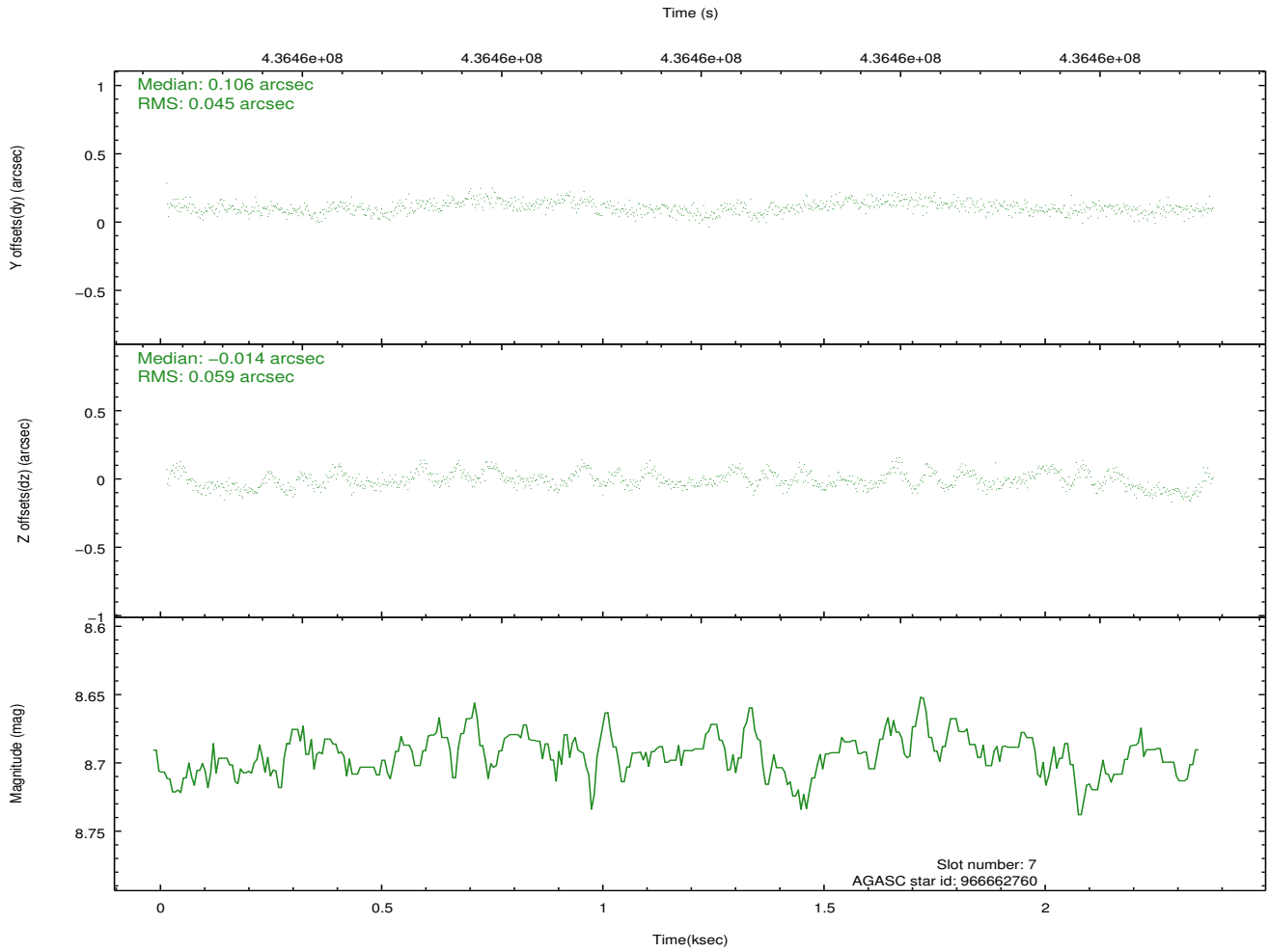
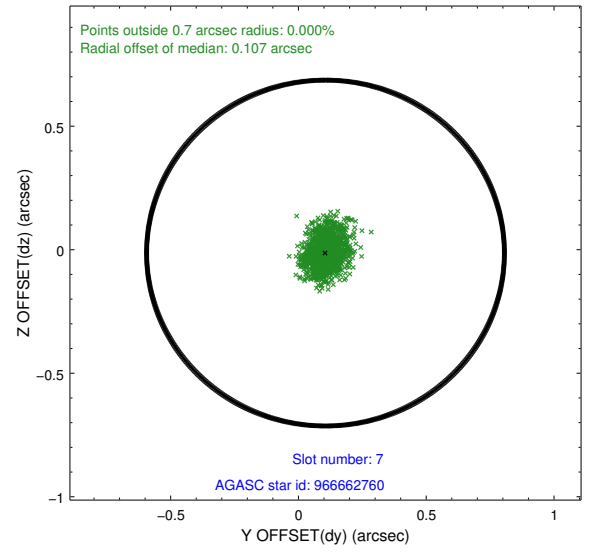
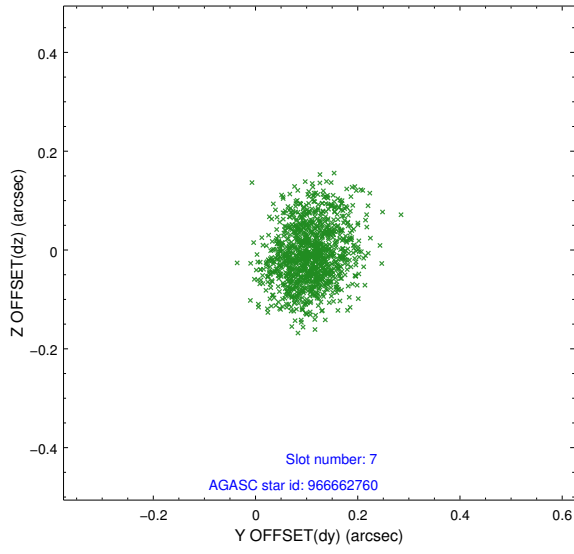
2.4.3 Slot 5



2.4.4 Slot 6

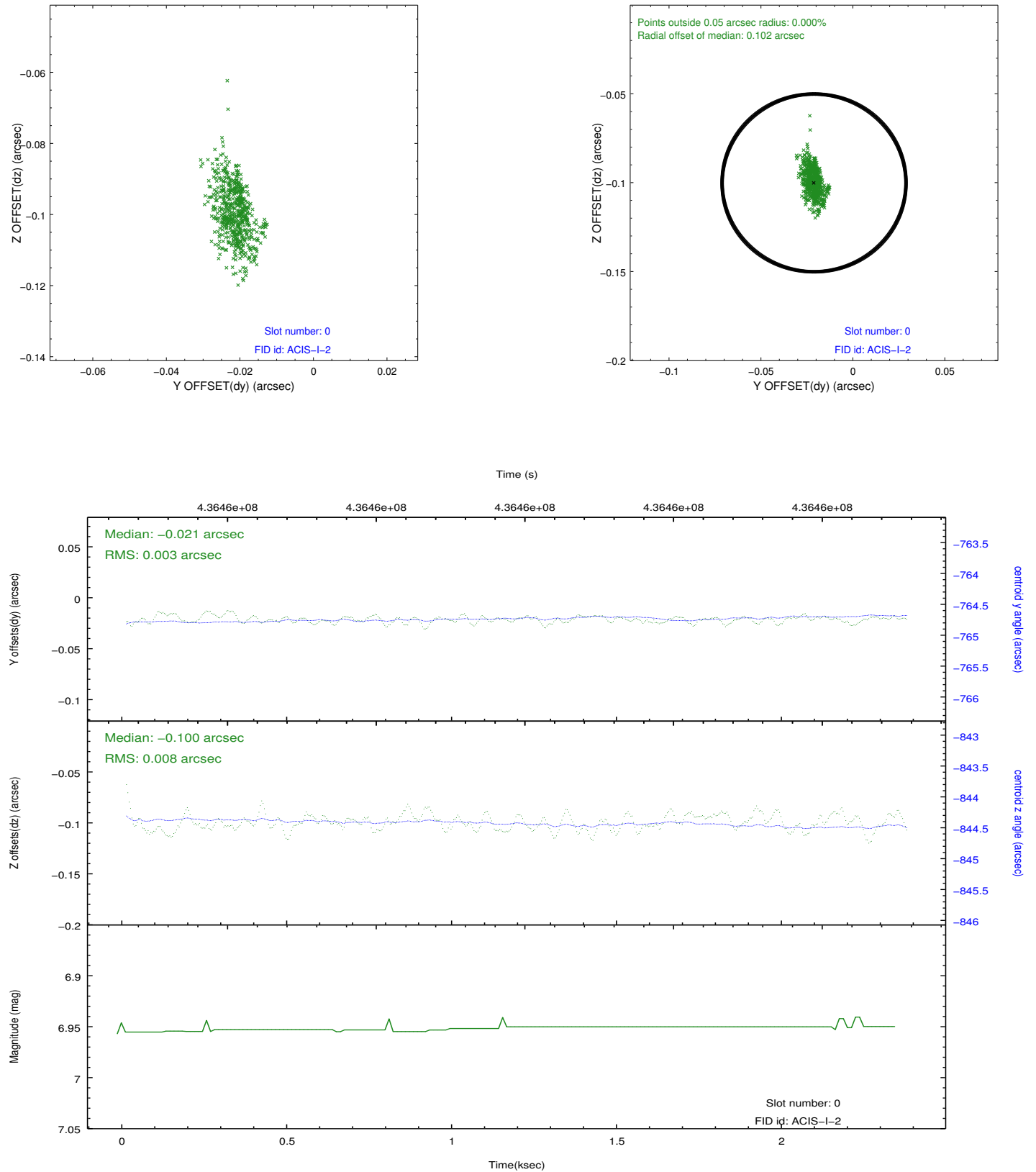


2.4.5 Slot 7

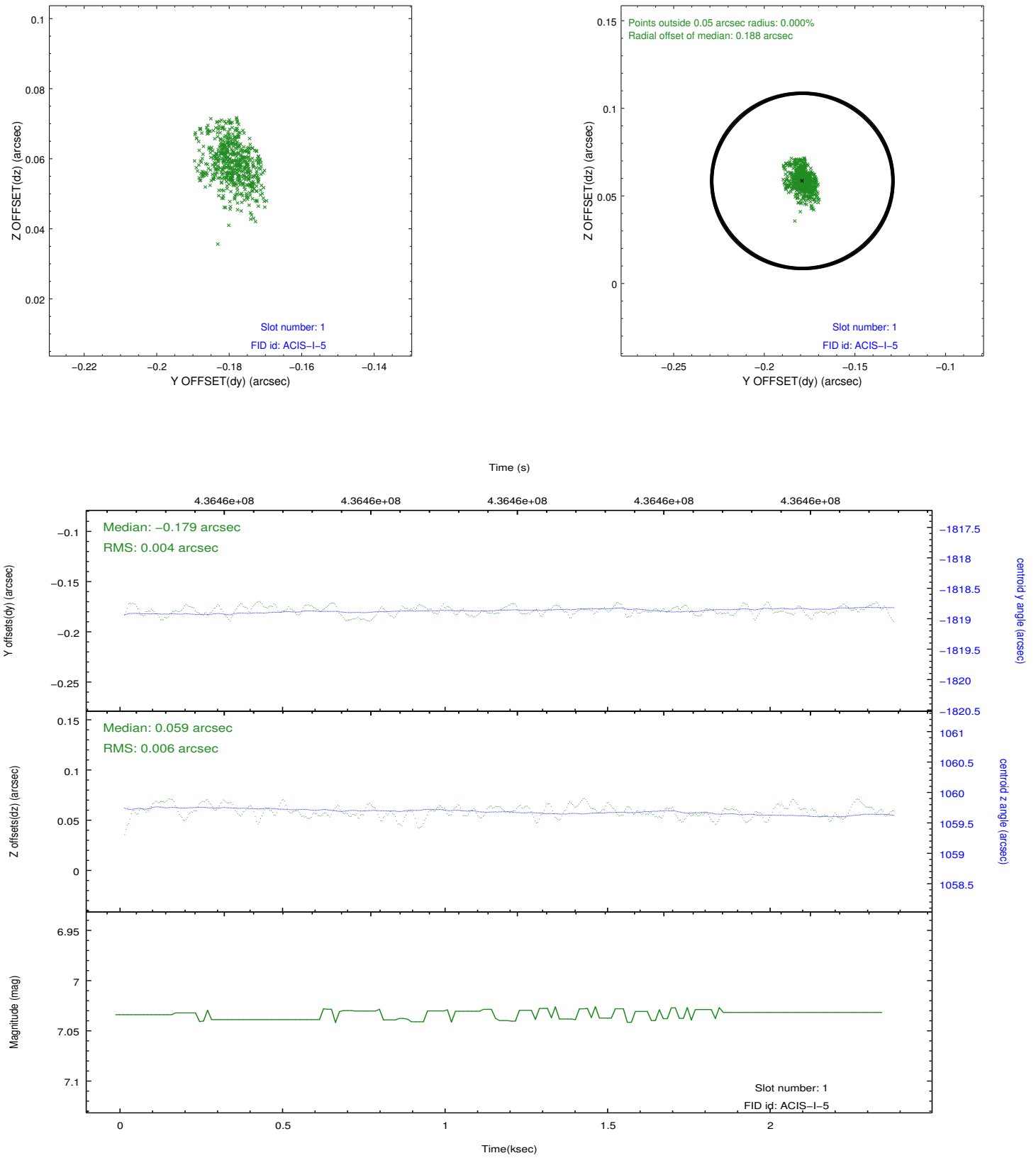


2.5 FID Slots

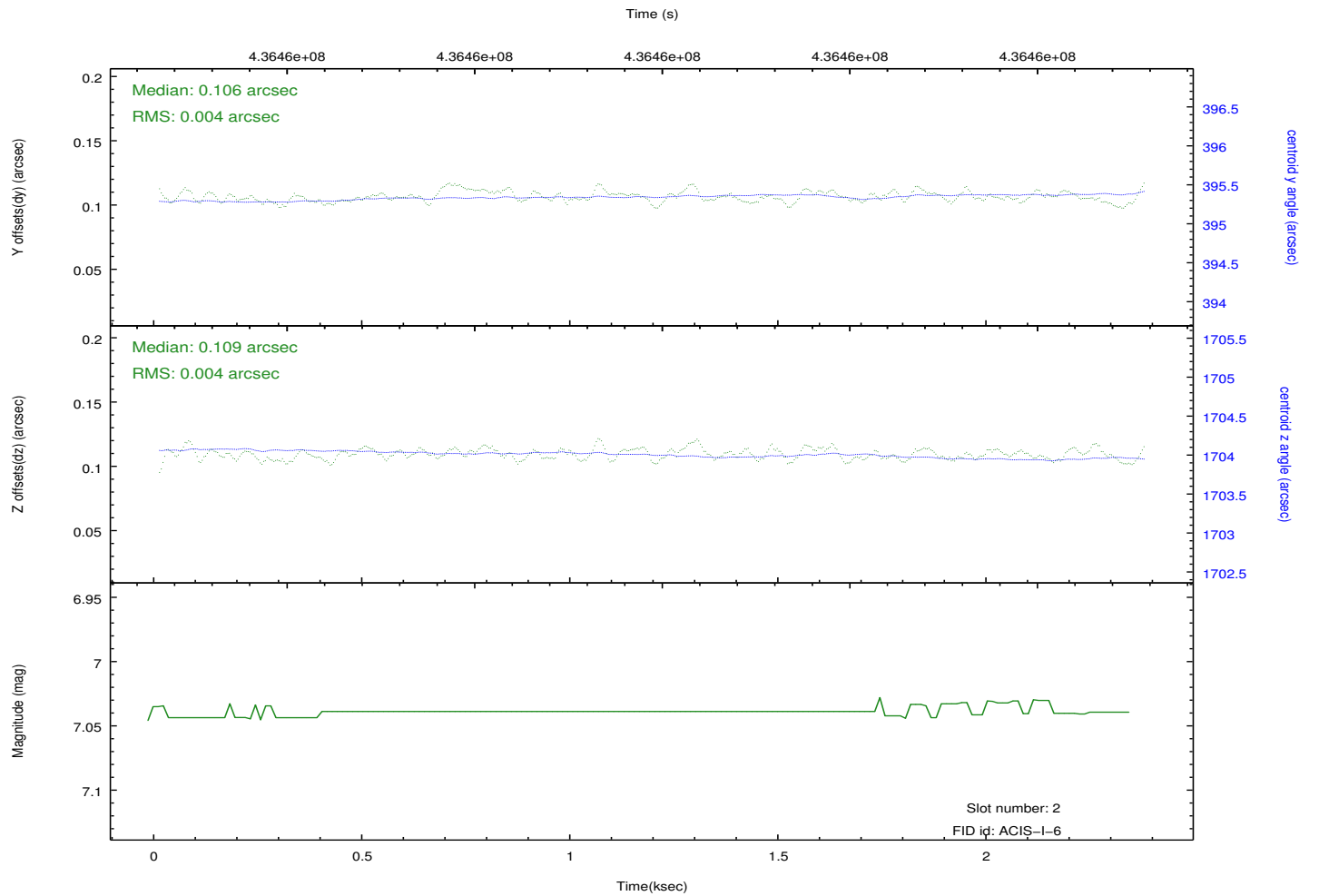
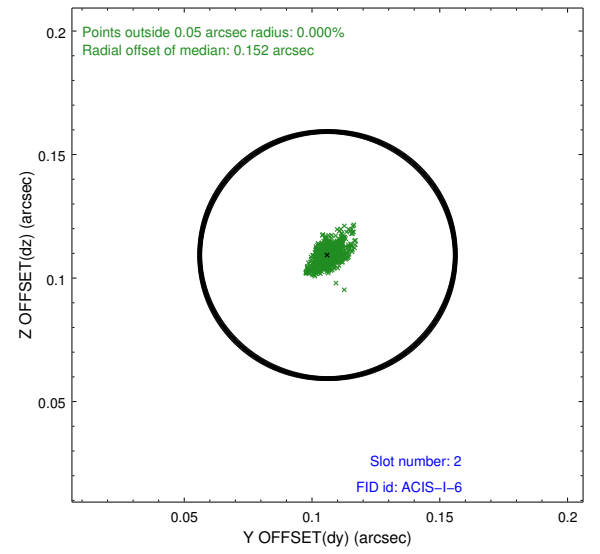
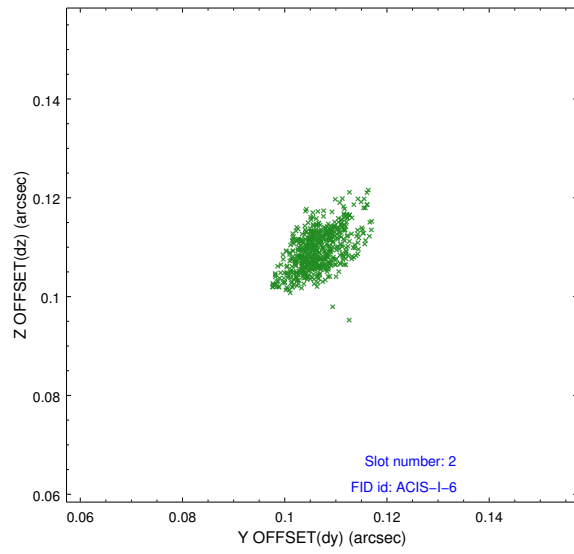
2.5.1 Slot 0



2.5.2 Slot 1



2.5.3 Slot 2



A Summary

A.1 Status

V&V Scientist	Jen Lauer
V&V Date (YYYY-MM-DD)	2012.03.02
V&V Edition	1
V&V Disposition and Status	OK
V&V Charge Time	1.9716000151634

A.2 Comments

Joint Proposal: NOAO