

V&V Reference Report

L2 ASCDS Version : 8.4.3

Observation 13430 - L2 Version 2
Chandra X-Ray Center

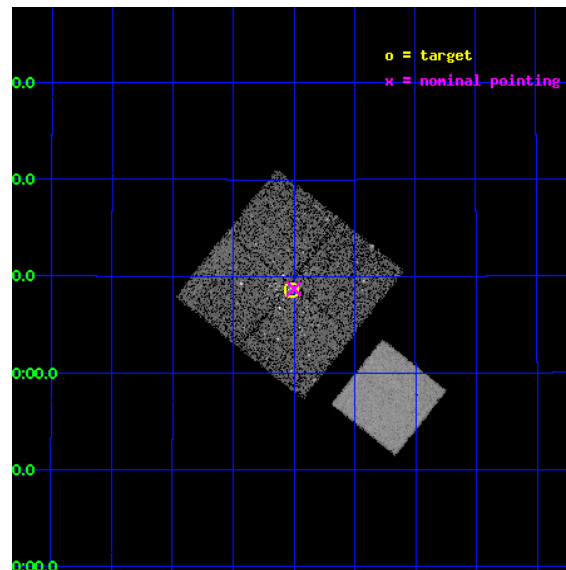
L2 Processing Date : Mar 2 2012

Contents

1	Front	2
2	OBI	3
2.1	OBI	3
2.1.1	Images	3
2.1.2	Bias	3
2.1.3	Parameters	4
2.1.4	Events	4
2.2	Compared Parameters	5
2.3	Aspect	6
2.4	Star Slots	9
2.4.1	Slot 3	9
2.4.2	Slot 4	10
2.4.3	Slot 5	11
2.4.4	Slot 6	12
2.4.5	Slot 7	13
2.5	FID Slots	14
2.5.1	Slot 0	14
2.5.2	Slot 1	15
2.5.3	Slot 2	16
A	Summary	17
A.1	Status	17
A.2	Comments	17

1 Front

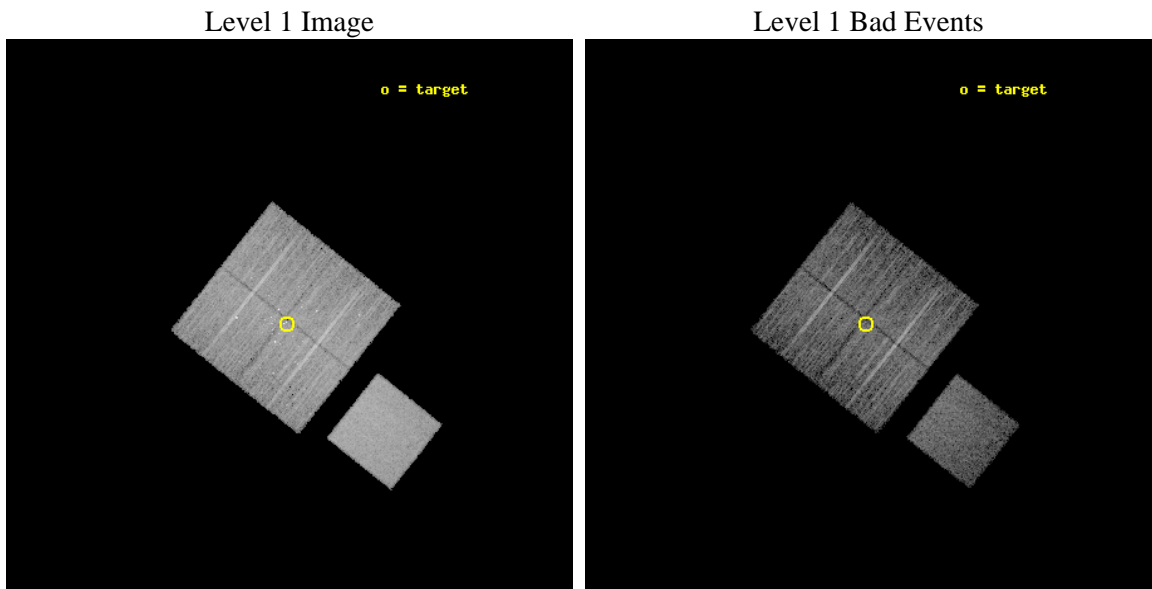
seq_num	200752	Sequence number
obs_id	13430	Observation id
title	Connecting Young Stellar Object Variability Across the Great Observatories: A Combined Spitzer and Chandra Study	Proposal title
observer	Dr. Kevin Flaherty	Principal investigator
object	IC 348	Source name
dtcycle	0	
cycle	P	events from which exps? Prim/Second/Both
ra_targ	56.13125	Observer's specified target RA [deg]
dec_targ	32.142694	Observer's specified target Dec [deg]
ra_nom	56.125136036565	Nominal RA [deg]
dec_nom	32.145242185426	Nominal Dec [deg]
roll_nom	128.51955058124	Nominal Roll [deg]
revision	2	Processing version of data
ontime	10044.000077248	Sum of GTIs [s]
livetime	9912.7678219531	Livetime [s]
ontime0	10040.85908699	Sum of GTIs [s]
ontime1	10044.000077248	Sum of GTIs [s]
ontime2	10044.000077248	Sum of GTIs [s]
ontime3	10044.000077248	Sum of GTIs [s]
ontime7	10044.000077248	Sum of GTIs [s]
l2events	63995	Number of level 2 events



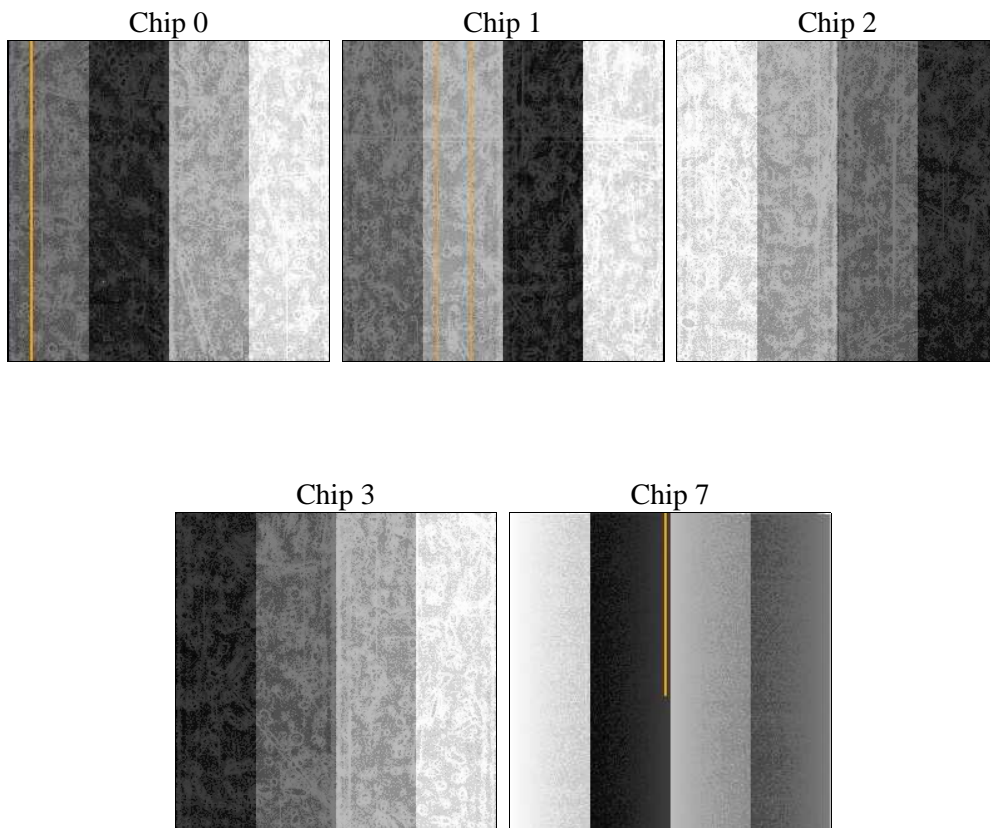
2 OBI

2.1 OBI

2.1.1 Images



2.1.2 Bias



2.1.3 Parameters

obi_num	0	Obi number	sched_exp_time	10000.000000	[s] Scheduled observation exposure time
ascdsver	8.4.3	Processing system revision	ontime	10044.000077248	Sum of GTIs [s]
caldsver	4.4.8	 	ontime0	10040.85908699	Sum of GTIs [s]
date	2012-03-02T14:21:19	Date and time of file creation	ontime1	10044.000077248	Sum of GTIs [s]
revision	2	Processing version of data	ontime2	10044.000077248	Sum of GTIs [s]
			ontime3	10044.000077248	Sum of GTIs [s]
			ontime7	10044.000077248	Sum of GTIs [s]
			l1events	319778	Number of level 1 events

2.1.4 Events

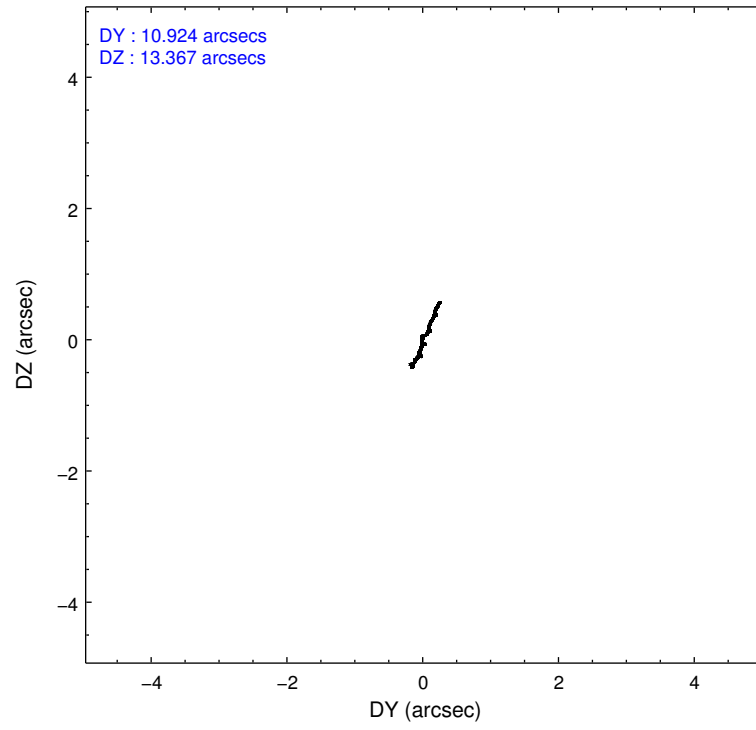
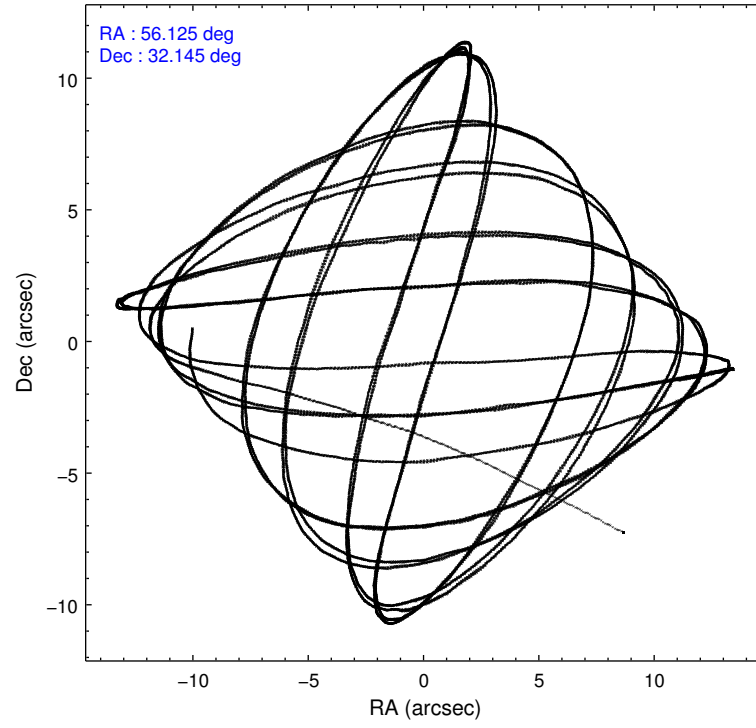
	ccd 0	ccd 1	ccd 2	ccd 3	ccd 7
level 1 events	56711	59669	60635	63111	79652
rejected events	48495	50138	52872	53630	44846
rejected %	85%	84%	87%	84%	56%

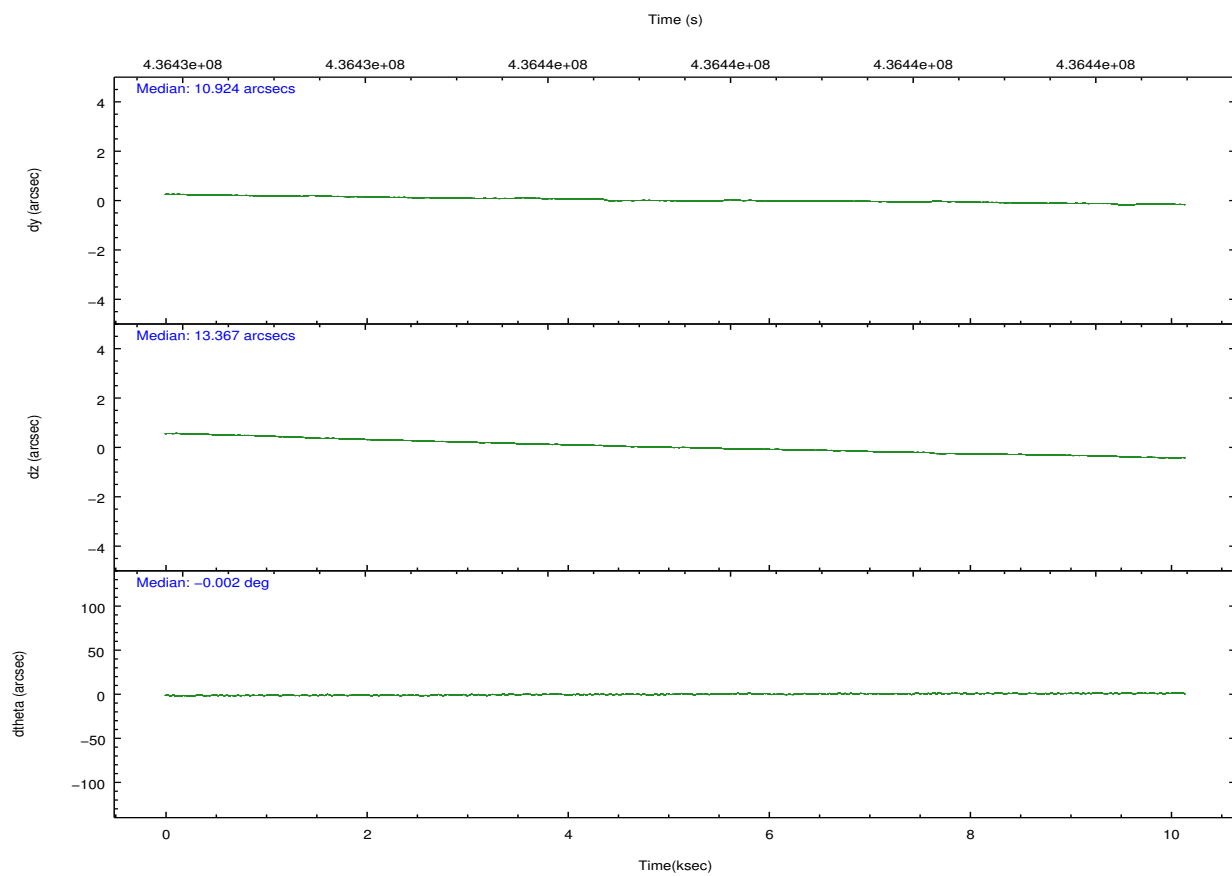
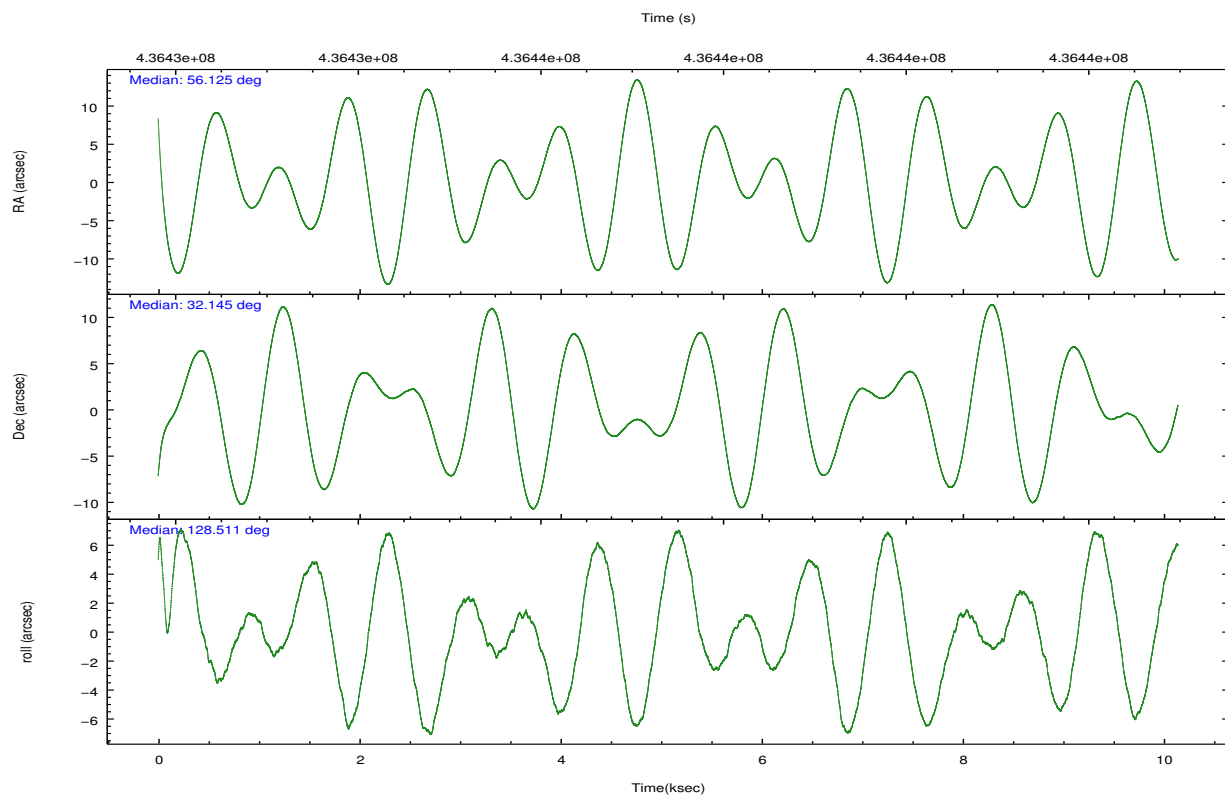
	ccd 0	ccd 1	ccd 2	ccd 3	ccd 7
grade 0 events	3414	4147	3267	4687	3023
	6%	6%	5%	7%	3%
grade 1 events	48	42	31	76	79
	0%	0%	0%	0%	0%
grade 2 events	1892	2030	1701	1760	7101
	3%	3%	2%	2%	8%
grade 3 events	799	846	689	782	3125
	1%	1%	1%	1%	3%
grade 4 events	724	829	756	771	3033
	1%	1%	1%	1%	3%
grade 5 events	2770	2843	2599	3124	8472
	4%	4%	4%	4%	10%
grade 6 events	1389	1690	1357	1491	18544
	2%	2%	2%	2%	23%
grade 7 events	45675	47242	50235	50420	36275
	80%	79%	82%	79%	45%

2.2 Compared Parameters

Parameter	Planned	Actual	Parameter	Planned	Actual
Instrument	ACIS	ACIS	Obspar format version number	7	7
Detector	ACIS-01237	ACIS-01237	Obspar file type	PREDICTED	ACTUAL
Grating	NONE	NONE	Obspar update status	NONE	UPDATED
Data mode	VFAINT	VFAINT	CCD I0 on	Y	Y
Observation mode	POINTING	POINTING	CCD I1 on	Y	Y
[deg] Pointing RA	56.155453	56.12513603656514	CCD I2 on	Y	Y
[deg] Pointing Dec	32.135302	32.14524218542574	CCD I3 on	Y	Y
[deg] Pointing Roll	128.294711	128.5195505812443	CCD S0 on	N	N
[mm] SIM focus pos	-0.782348	-0.7809083437167272	CCD S1 on	N	N
[mm] SIM defocus	0	0.001439871863259334	CCD S2 on	N	N
[mm] SIM translation stage pos	-233.592463	-233.5874344608287	CCD S3 on	O1	Y
[mm] SIM translation stage offset	0	-0.005018542100998502	CCD S4 on	N	N
[s] Observation start time (MET)	436432453.184000	436431357.06469	CCD S5 on	N	N
Observation start date	2011-10-31T07:13:07	2011-10-31T06:55:57	Number of optional ACIS chips dropped	0	0
[s] Observation end time (MET)	436442453.184000	436443443.35283	On-chip summing requested	N	N
Observation end date	2011-10-31T09:59:47	2011-10-31T10:17:23	Subarray requested	NONE	NONE
Read mode	TIMED	TIMED	Alternating exposures requested	N	N
			[s] Primary exposure time	0.000000	3.1

2.3 Aspect



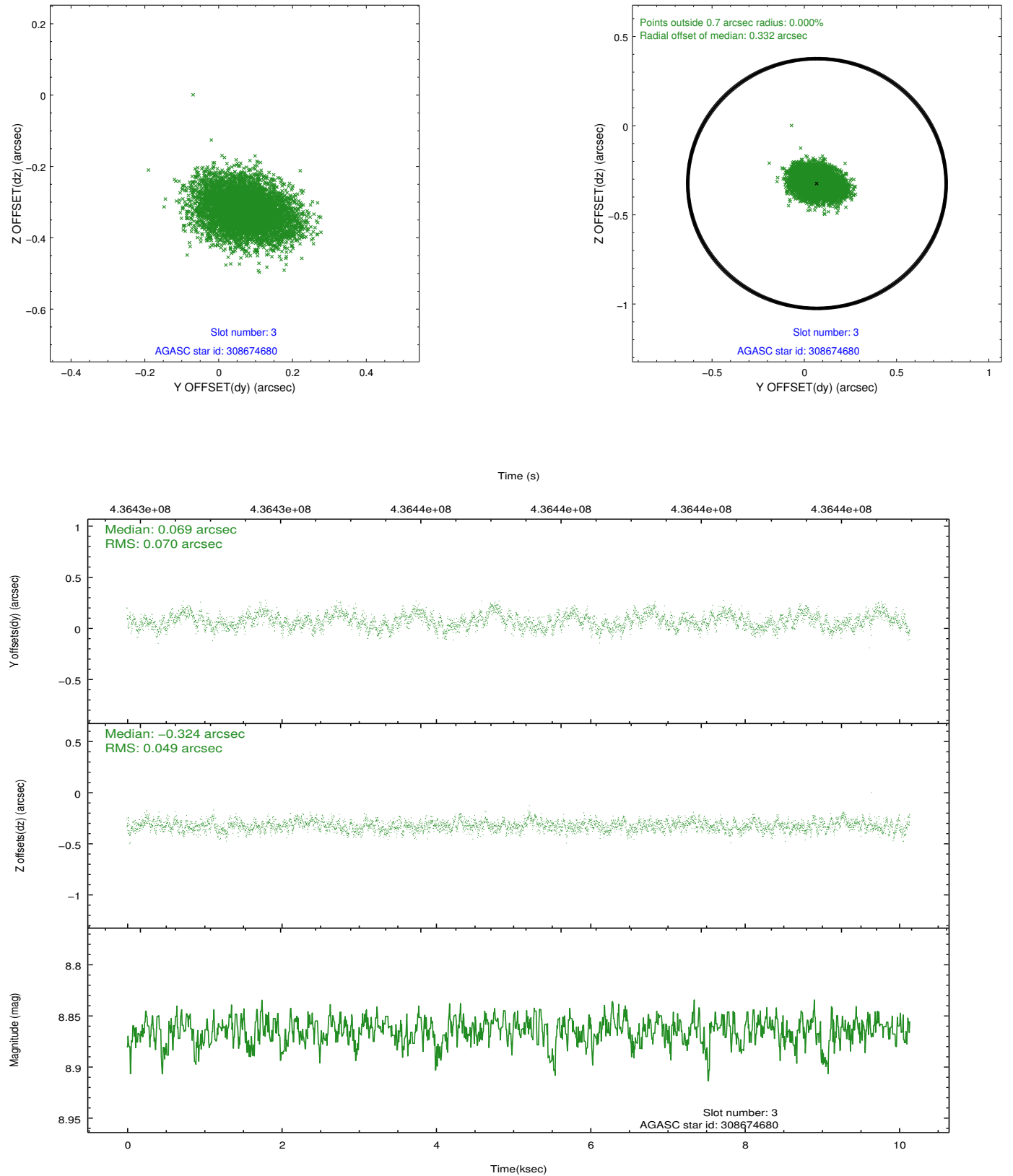


Slot Statistics

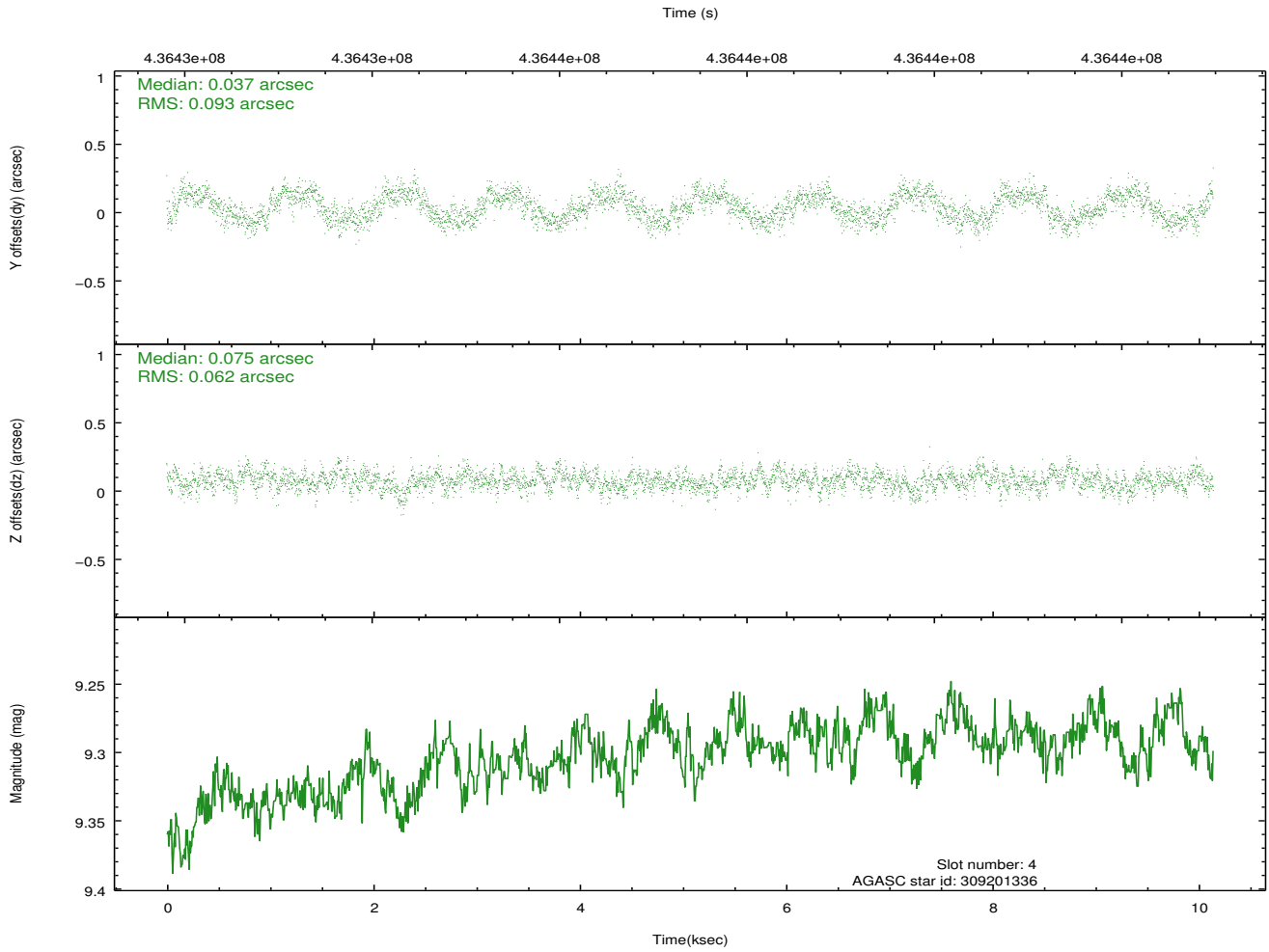
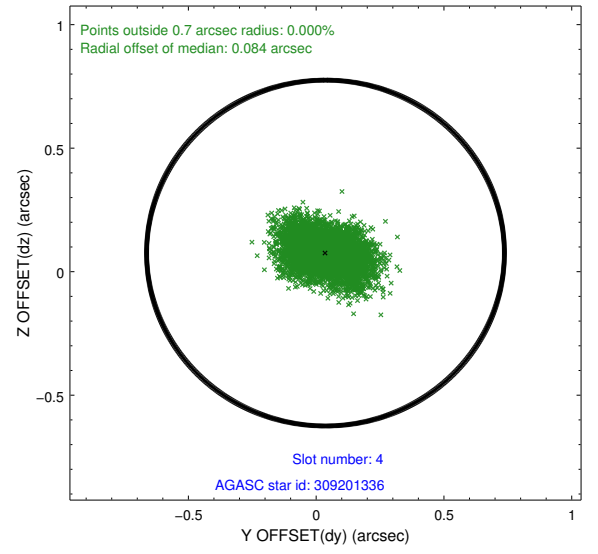
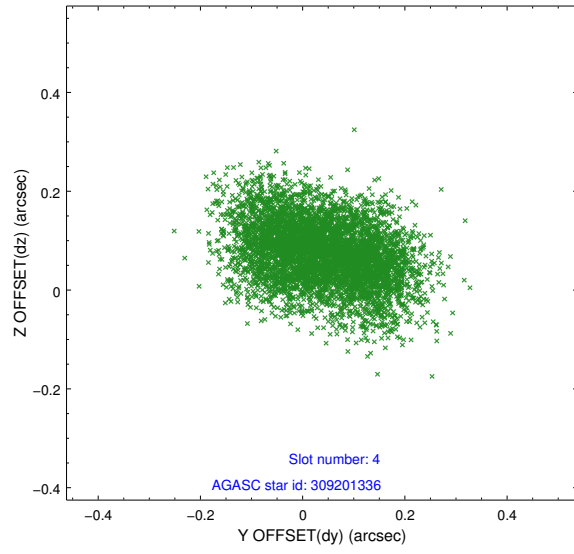
slot	status	id	mag	n_pts	med_dy	med_dz	dr1	dr2	ra	dec	mean_y	mean_z
0	FID	ACIS-I-1	7.05	2474	0.065	-0.010	0.012	0.020	0.000000	0.000000	928.68	-836.96
1	FID	ACIS-I-5	7.04	2475	-0.220	0.071	0.009	0.015	0.000000	0.000000	-1819.43	1060.34
2	FID	ACIS-I-6	7.04	2474	0.064	0.010	0.009	0.014	0.000000	0.000000	393.65	1705.38
3	GUIDE	308674680	8.86	4947	0.069	-0.324	0.091	0.147	55.747345	31.652644	-586.71	2055.55
4	GUIDE	309201336	9.30	4941	0.037	0.075	0.120	0.190	55.980135	32.629910	1727.33	-685.90
5	GUIDE	309205288	9.20	4945	0.072	0.075	0.123	0.195	55.920876	32.625581	1827.06	-535.71
6	GUIDE	309336160	7.09	4949	0.014	-0.008	0.075	0.127	56.670296	32.290187	-529.60	-1577.78
7	GUIDE	309330608	9.24	4946	-0.203	0.188	0.118	0.189	56.696267	32.605248	315.15	-2338.02

2.4 Star Slots

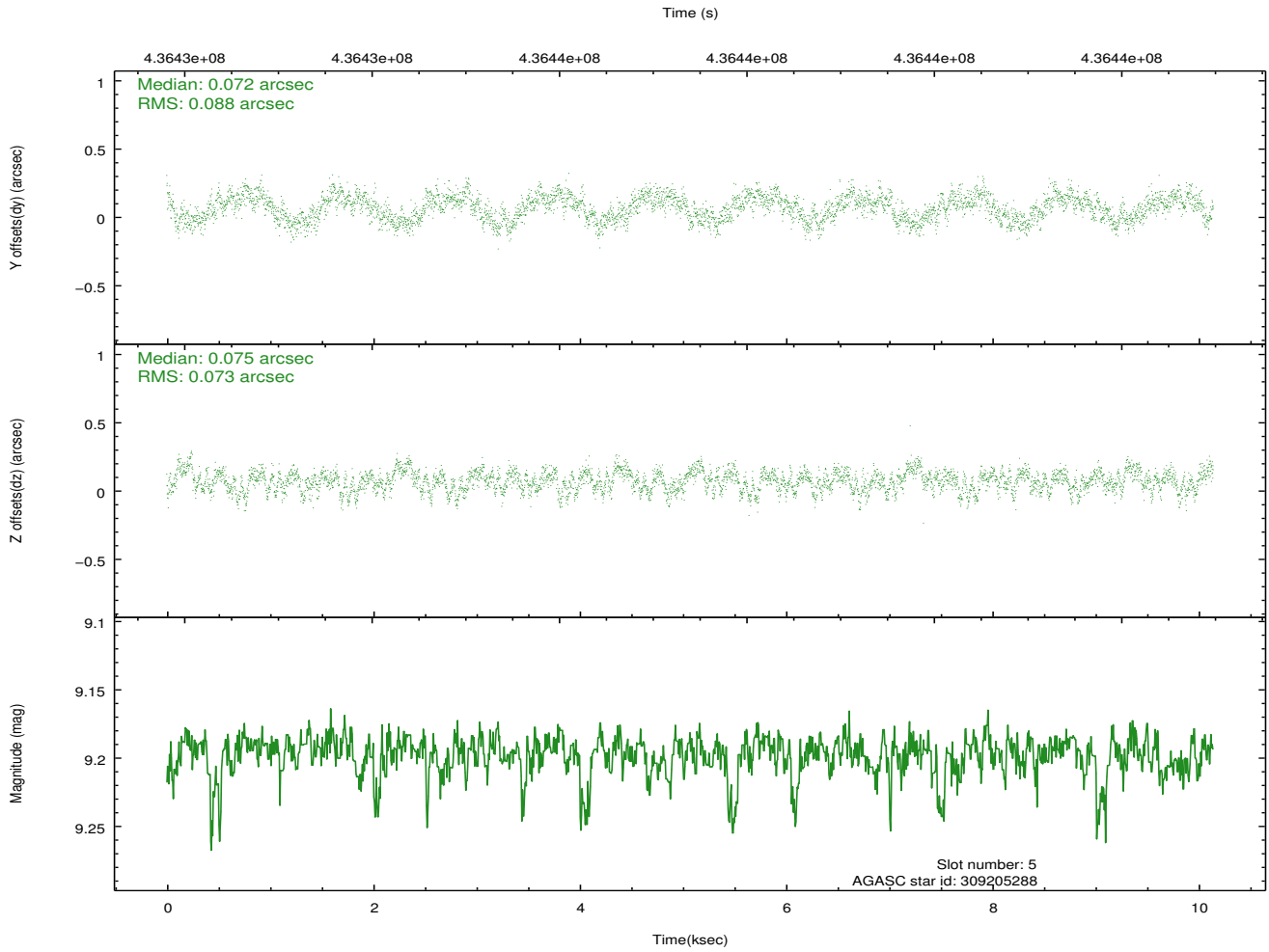
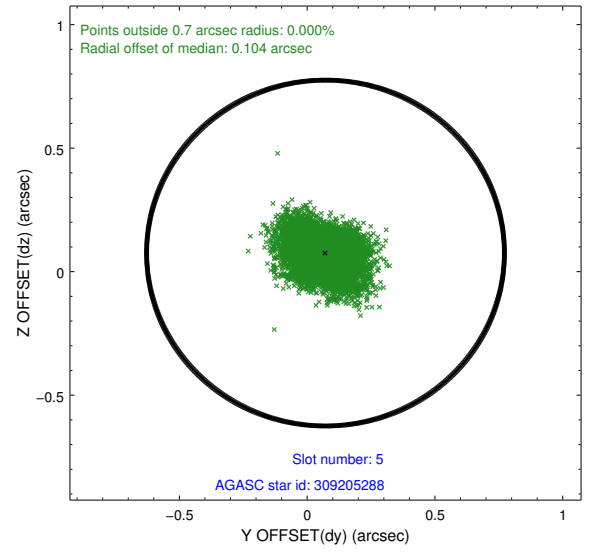
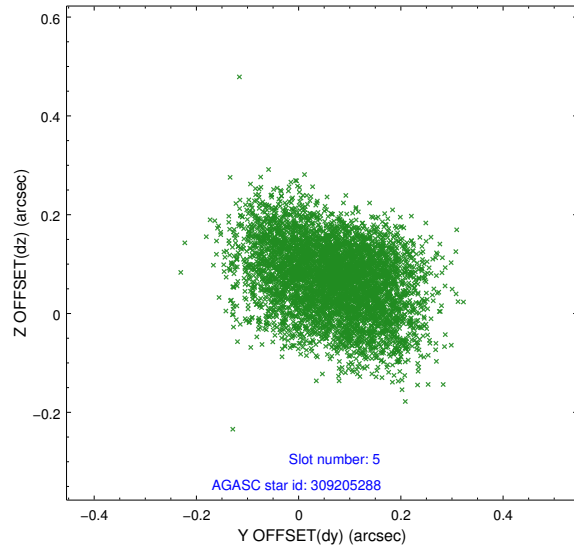
2.4.1 Slot 3



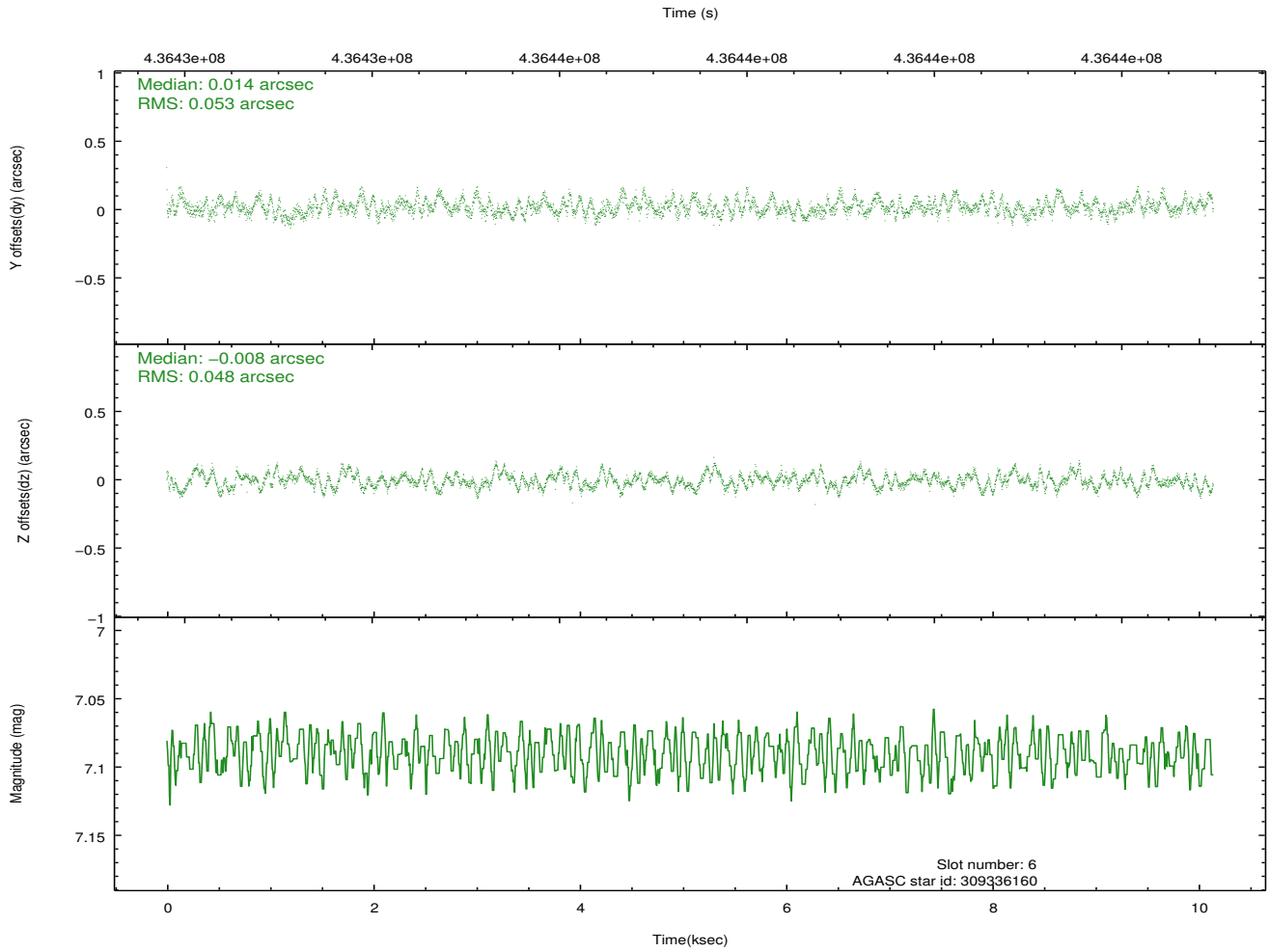
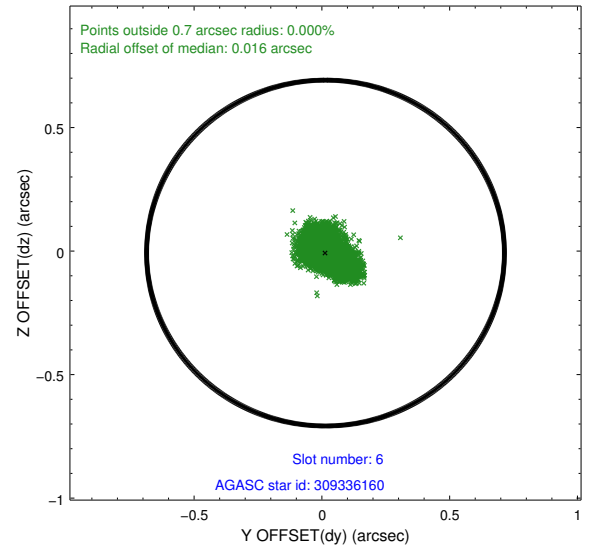
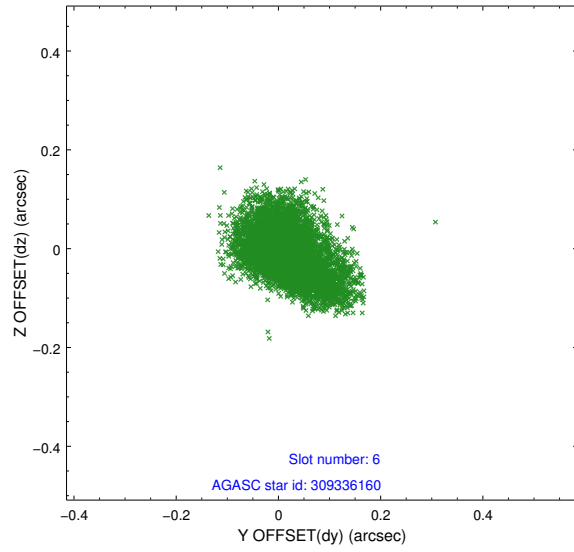
2.4.2 Slot 4



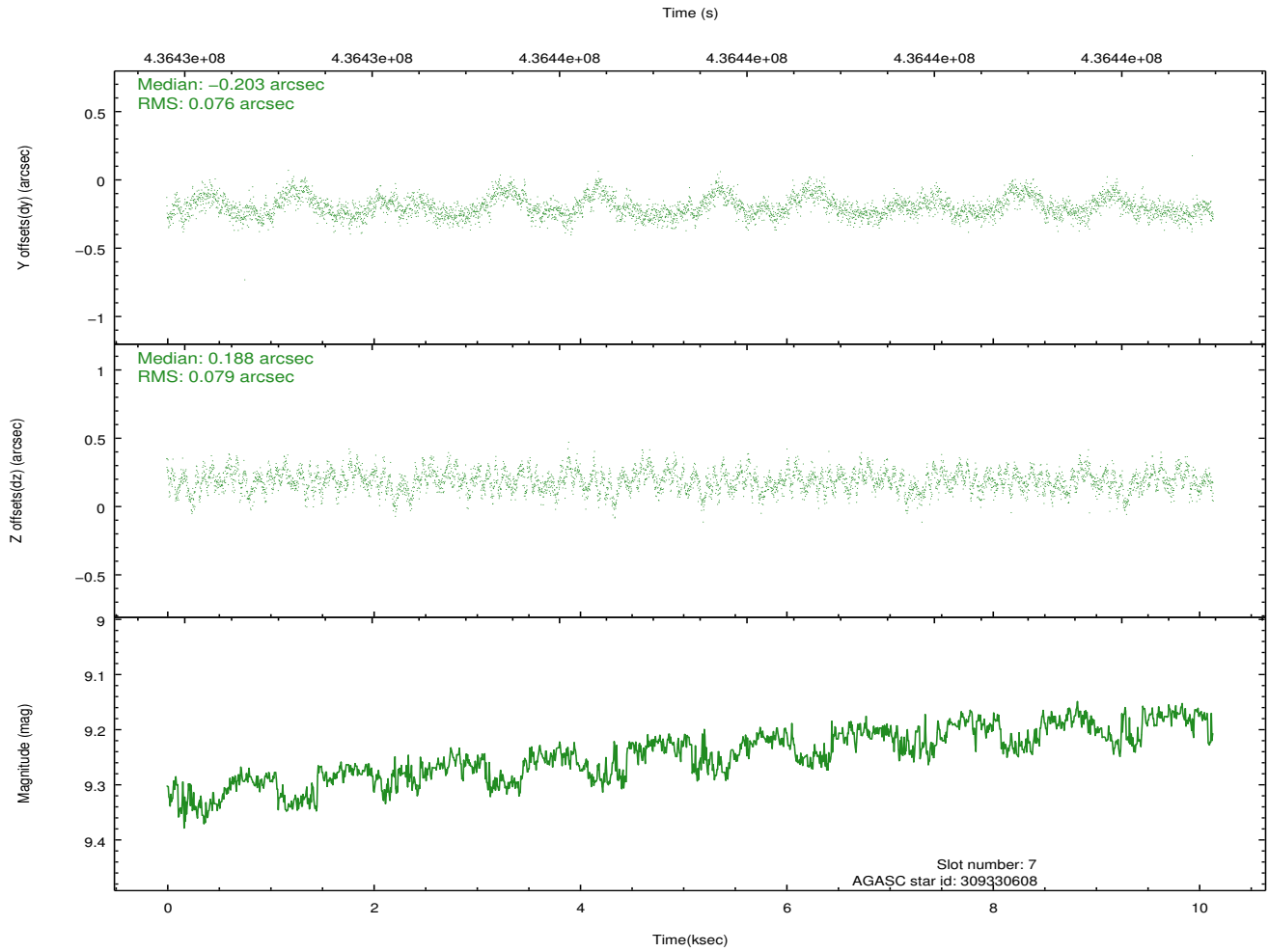
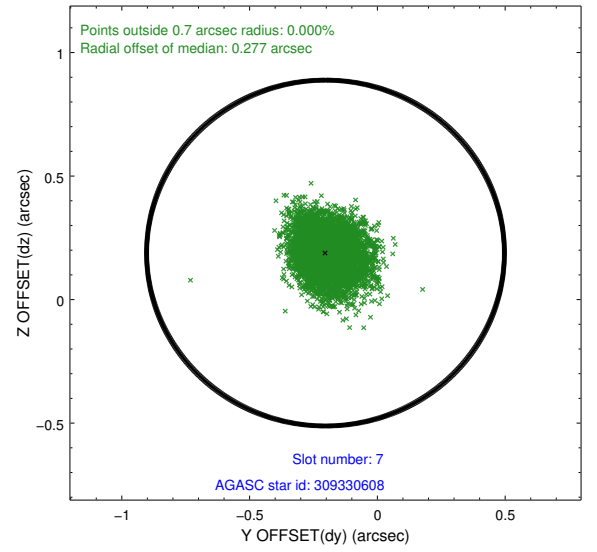
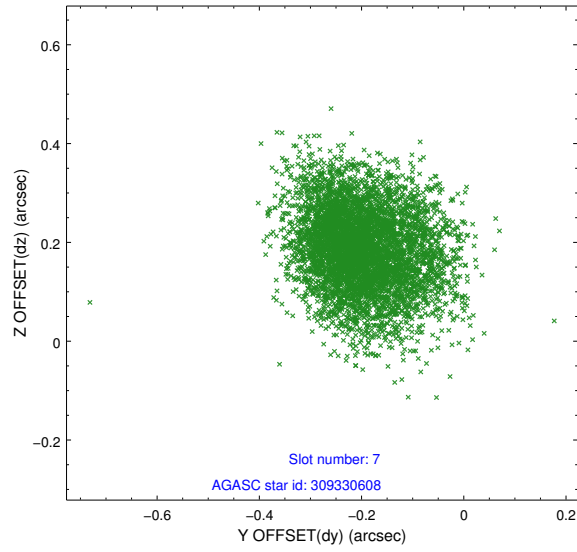
2.4.3 Slot 5



2.4.4 Slot 6

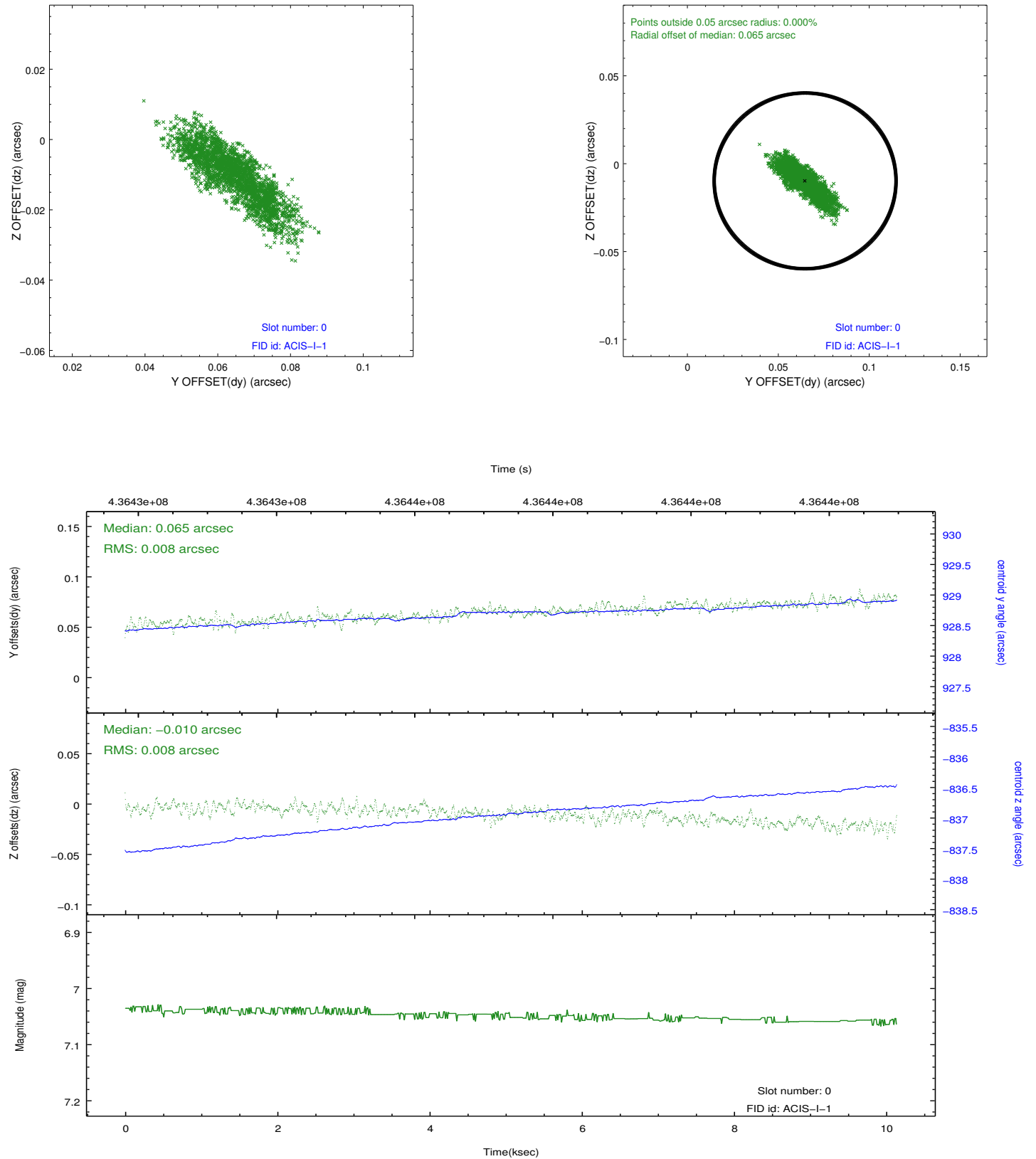


2.4.5 Slot 7

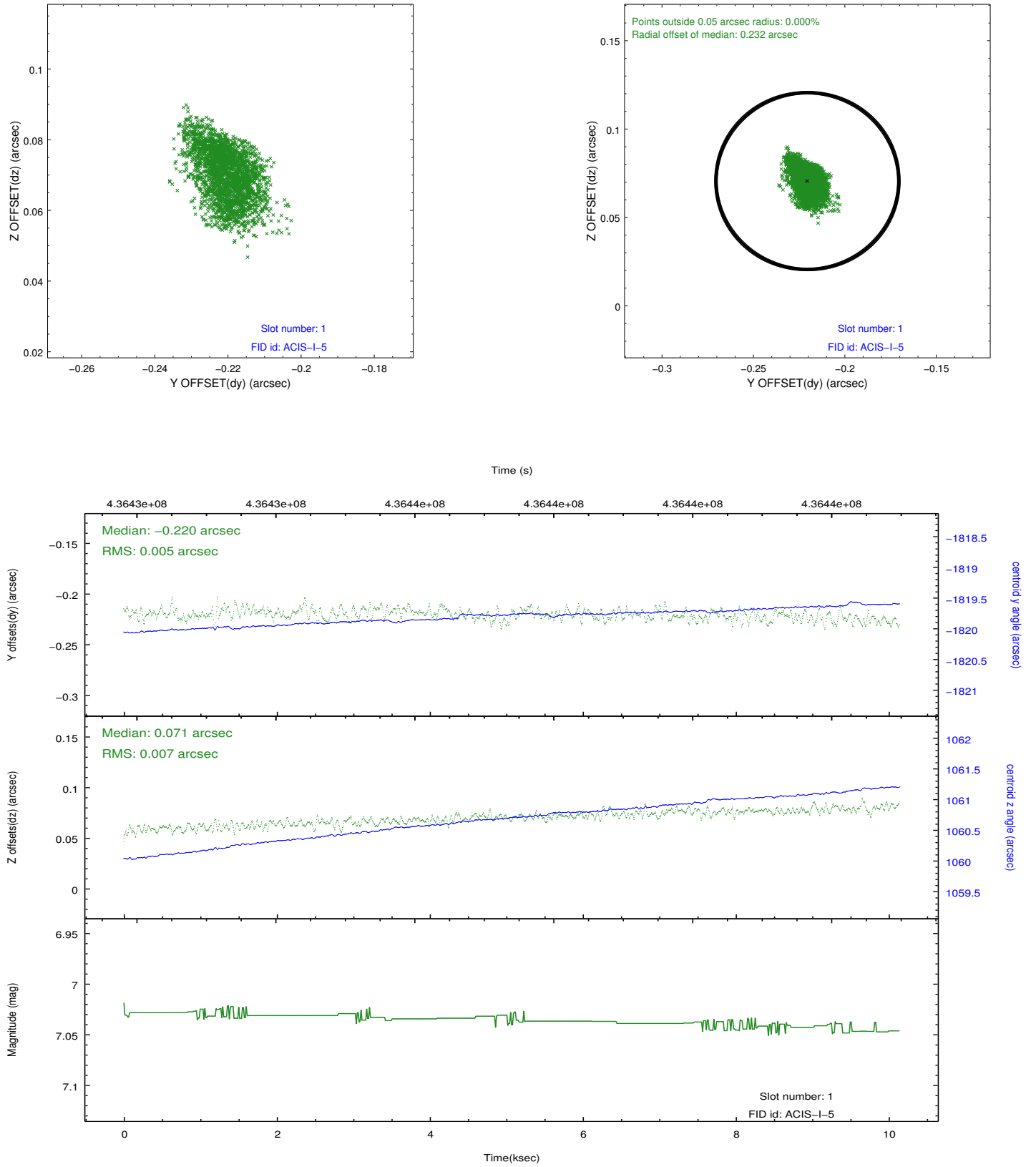


2.5 FID Slots

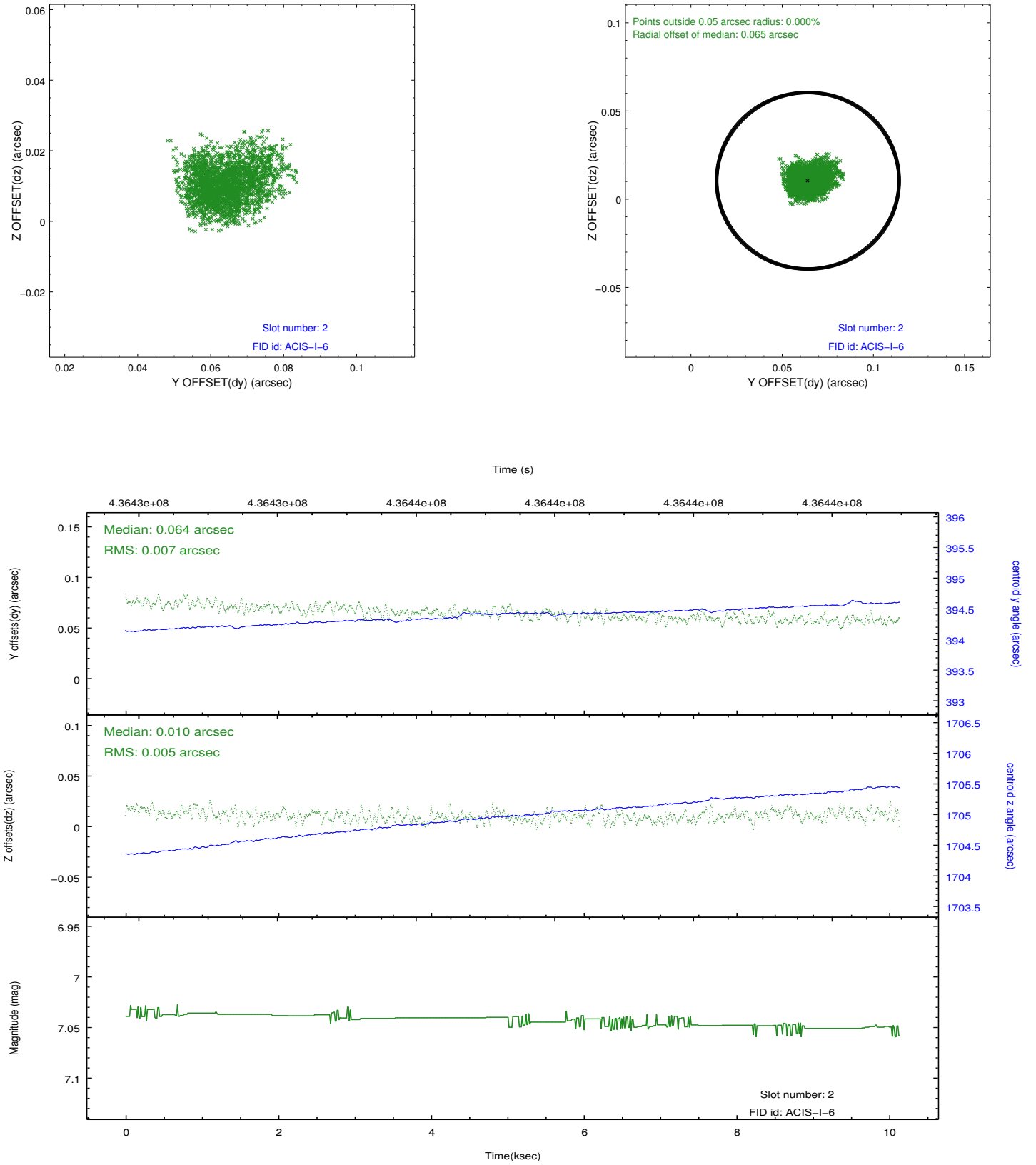
2.5.1 Slot 0



2.5.2 Slot 1



2.5.3 Slot 2



A Summary

A.1 Status

V&V Scientist	Jen Lauer
V&V Date (YYYY-MM-DD)	2012.03.02
V&V Edition	1
V&V Disposition and Status	OK
V&V Charge Time	10.044000077248

A.2 Comments

Joint Proposal: CX0-Spitzer. Monitor constraint met.