

# V&V Reference Report

## L2 ASCDS Version : 8.4.3

Observation 12937 - L2 Version 2  
Chandra X-Ray Center

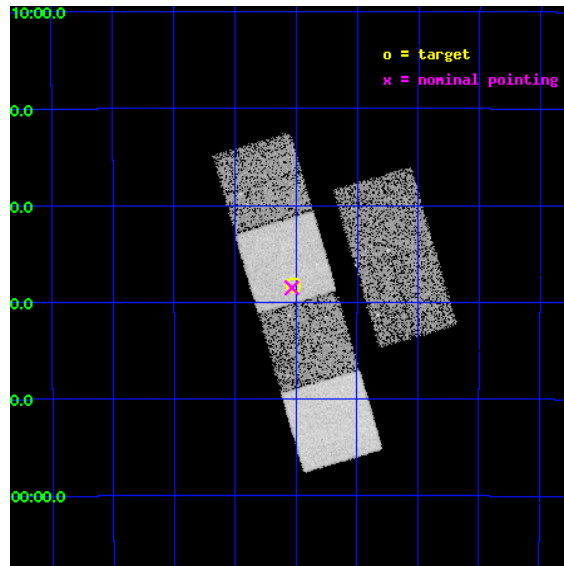
L2 Processing Date : Mar 18 2012

## Contents

<b>1</b>	<b>Front</b>	<b>2</b>
<b>2</b>	<b>OBI</b>	<b>3</b>
2.1	OBI . . . . .	3
2.1.1	Images . . . . .	3
2.1.2	Bias . . . . .	3
2.1.3	Parameters . . . . .	4
2.1.4	Events . . . . .	4
2.2	Compared Parameters . . . . .	5
2.3	Aspect . . . . .	6
2.4	Star Slots . . . . .	9
2.4.1	Slot 3 . . . . .	9
2.4.2	Slot 4 . . . . .	10
2.4.3	Slot 5 . . . . .	11
2.4.4	Slot 6 . . . . .	12
2.4.5	Slot 7 . . . . .	13
2.5	FID Slots . . . . .	14
2.5.1	Slot 0 . . . . .	14
2.5.2	Slot 1 . . . . .	15
2.5.3	Slot 2 . . . . .	16
<b>A</b>	<b>Summary</b>	<b>17</b>
A.1	Status . . . . .	17
A.2	Comments . . . . .	17

# 1 Front

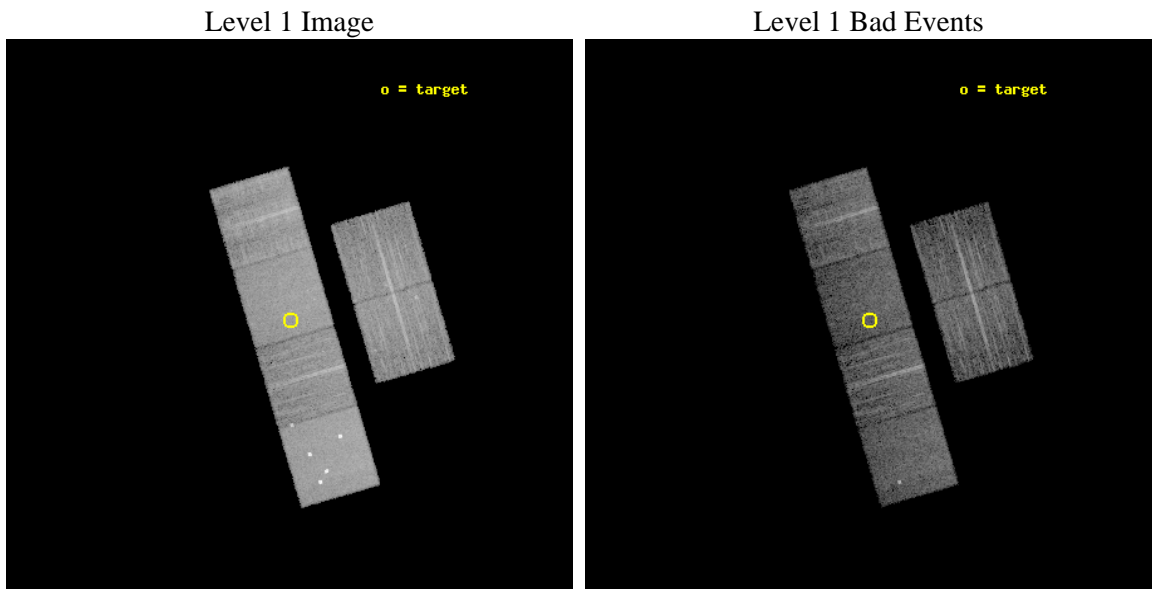
seq_num	900969	Sequence number
obs_id	12937	Observation id
title	Properties of a WHIM Filament in the Shapley Supercluster	Proposal
observer	Dr. Massimiliano Galeazzi	Principal investigator
object	Shapley filament	Source name
dtcycle	0	&#160
cycle	P	events from which exps? Prim/Second/Both
ra_targ	201.382083	Observer's specified target RA [deg]
dec_targ	-31.637528	Observer's specified target Dec [deg]
ra_nom	201.38361096751	Nominal RA [deg]
dec_nom	-31.642192056618	Nominal Dec [deg]
roll_nom	253.5927606395	Nominal Roll [deg]
revision	2	Processing version of data
ontime	10248.64142555	Sum of GTIs [s]
livetime	10118.866956829	Livetime [s]
ontime2	10248.682465553	Sum of GTIs [s]
ontime3	10248.51830554	Sum of GTIs [s]
ontime5	10248.600385547	Sum of GTIs [s]
ontime6	10248.559345543	Sum of GTIs [s]
ontime7	10248.64142555	Sum of GTIs [s]
ontime8	10248.477265537	Sum of GTIs [s]
l2events	109446	Number of level 2 events



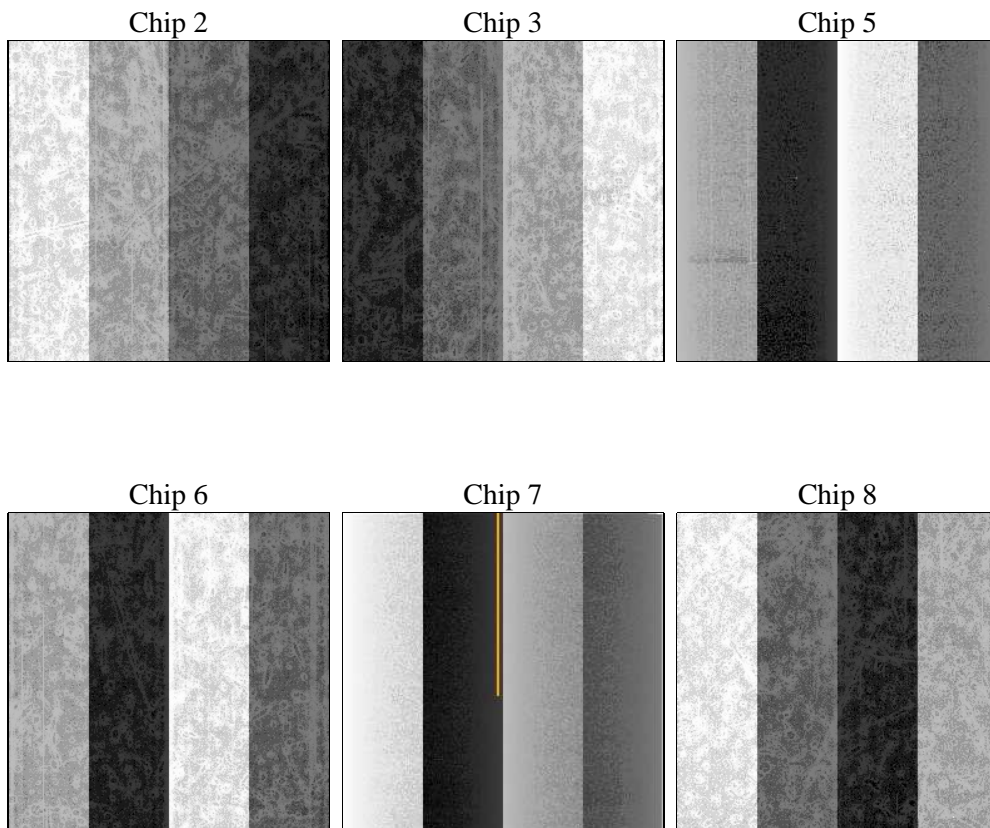
## 2 OBI

### 2.1 OBI

#### 2.1.1 Images



#### 2.1.2 Bias



### 2.1.3 Parameters

obi_num	0	Obi number	sched_exp_time	10198.897000	[s] Scheduled observation exposure time
ascdsver	8.4.3.1	Processing system revision	ontime	10248.64142555	Sum of GTIs [s]
caldsver	4.4.8	&#160	ontime2	10248.682465553	Sum of GTIs [s]
date	2012-03-18T18:56:42	Date and time of file creation	ontime3	10248.51830554	Sum of GTIs [s]
revision	2	Processing version of data	ontime5	10248.600385547	Sum of GTIs [s]
			ontime6	10248.559345543	Sum of GTIs [s]
			ontime7	10248.64142555	Sum of GTIs [s]
			ontime8	10248.477265537	Sum of GTIs [s]
			l1events	468554	Number of level 1 events

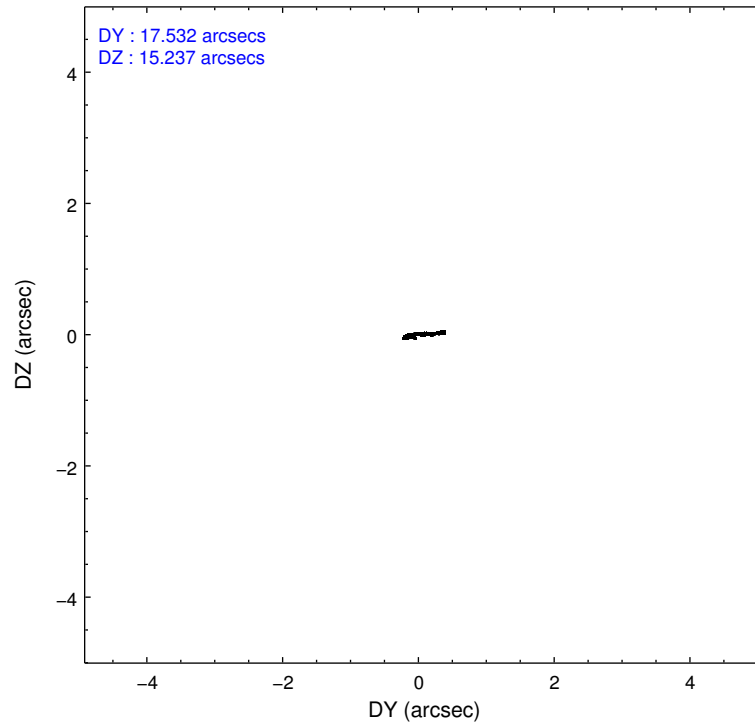
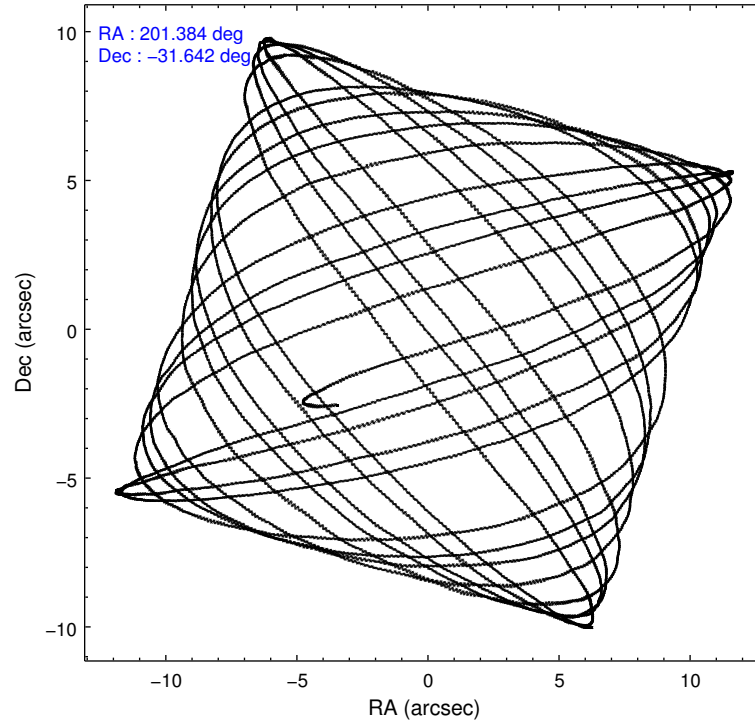
### 2.1.4 Events

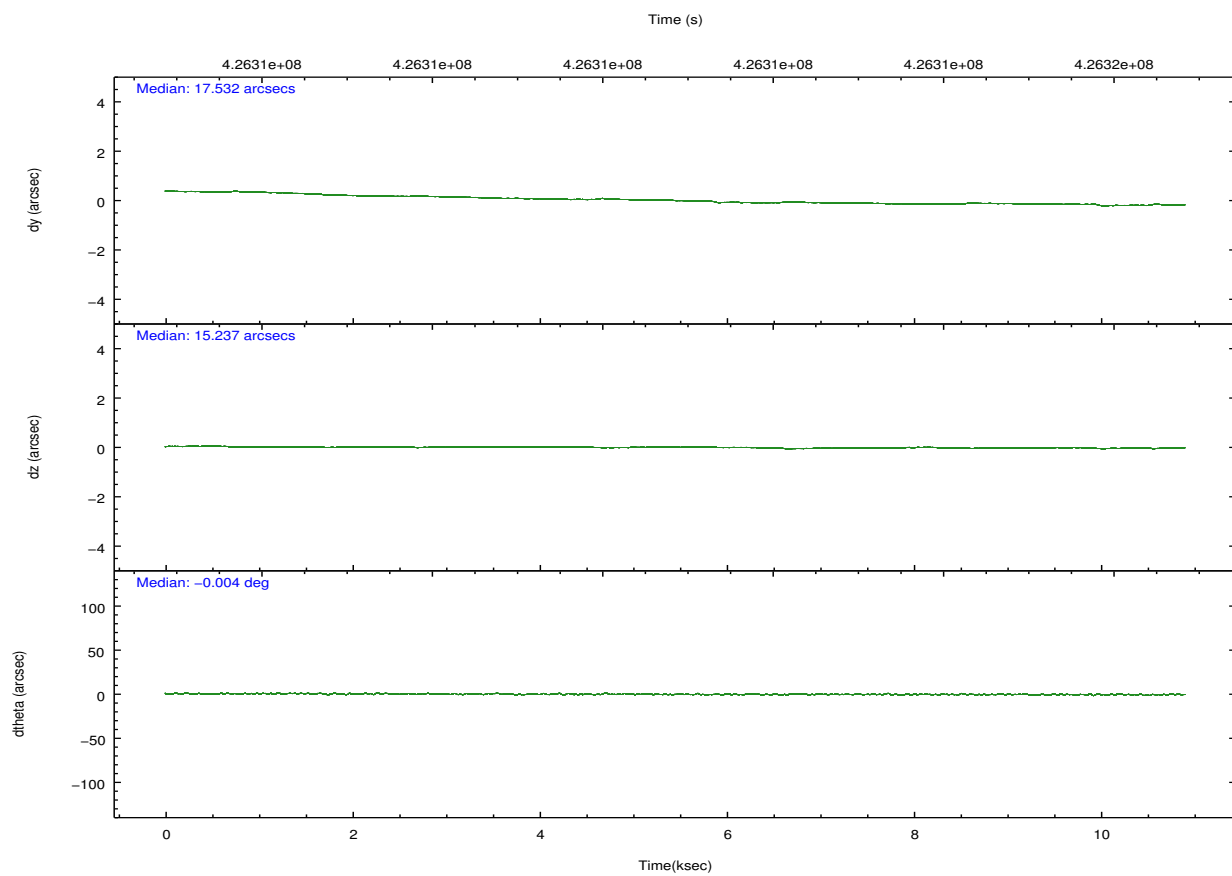
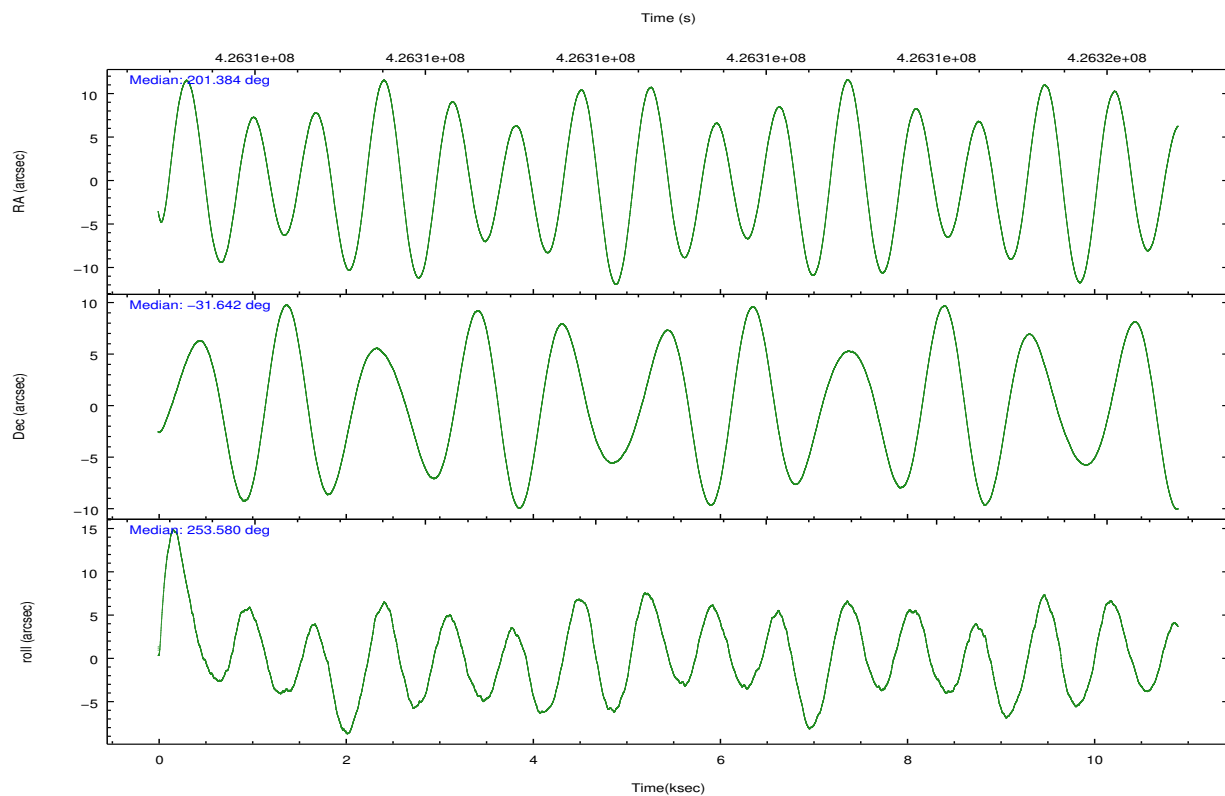
	ccd 2	ccd 3	ccd 5	ccd 6	ccd 7	ccd 8		ccd 2	ccd 3	ccd 5	ccd 6	ccd 7	ccd 8
level 1 events	65807	61484	111841	63806	83154	82462	grade 0 events	3015	2455	13615	2850	3593	6074
rejected events	58133	54779	51638	56052	45741	61393		4%	3%	12%	4%	4%	7%
rejected %	88%	89%	46%	87%	55%	74%	grade 1 events	63	28	681	37	104	70
								0%	0%	0%	0%	0%	0%
							grade 2 events	1816	1415	16783	1716	7793	4970
								2%	2%	15%	2%	9%	6%
							grade 3 events	706	761	1901	785	3303	2262
								1%	1%	1%	1%	3%	2%
							grade 4 events	766	700	1815	764	3248	2062
								1%	1%	1%	1%	3%	2%
							grade 5 events	2693	3121	7497	3056	8494	4437
								4%	5%	6%	4%	10%	5%
							grade 6 events	1376	1379	26147	1643	19495	5731
								2%	2%	23%	2%	23%	6%
							grade 7 events	55372	51625	43402	52955	37124	56856
								84%	83%	38%	82%	44%	68%

## 2.2 Compared Parameters

Parameter	Planned	Actual	Parameter	Planned	Actual
Instrument	ACIS	ACIS	Obspar format version number	7	7
Detector	ACIS-235678	ACIS-235678	Obspar file type	PREDICTED	ACTUAL
Grating	NONE	NONE	Obspar update status	NONE	UPDATED
Data mode	FAINT	FAINT	CCD I0 on	N	N
Observation mode	POINTING	POINTING	CCD I1 on	N	N
[deg] Pointing RA	201.375617	201.38361096751	CCD I2 on	O1	Y
[deg] Pointing Dec	-31.615718	-31.64219205661755	CCD I3 on	Y	Y
[deg] Pointing Roll	253.431949	253.5927606395037	CCD S0 on	N	N
[mm] SIM focus pos	-0.684267	-0.6828225247311905	CCD S1 on	Y	Y
[mm] SIM defocus	0	0.001444936568705701	CCD S2 on	Y	Y
[mm] SIM translation stage pos	-190.132523	-190.1400660498719	CCD S3 on	Y	Y
[mm] SIM translation stage offset	0	0.00754346686406393	CCD S4 on	Y	Y
[s] Observation start time (MET)	426306100.184000	426304687.68134	CCD S5 on	N	N
Observation start date	2011-07-06T02:20:34	2011-07-06T01:58:07	Number of optional ACIS chips dropped	0	0
[s] Observation end time (MET)	426316299.184000	426316524.89446	On-chip summing requested	N	N
Observation end date	2011-07-06T05:10:33	2011-07-06T05:15:24	Subarray requested	NONE	NONE
Read mode	TIMED	TIMED	Alternating exposures requested	N	N
			[s] Primary exposure time	0.000000	3.2

## 2.3 Aspect



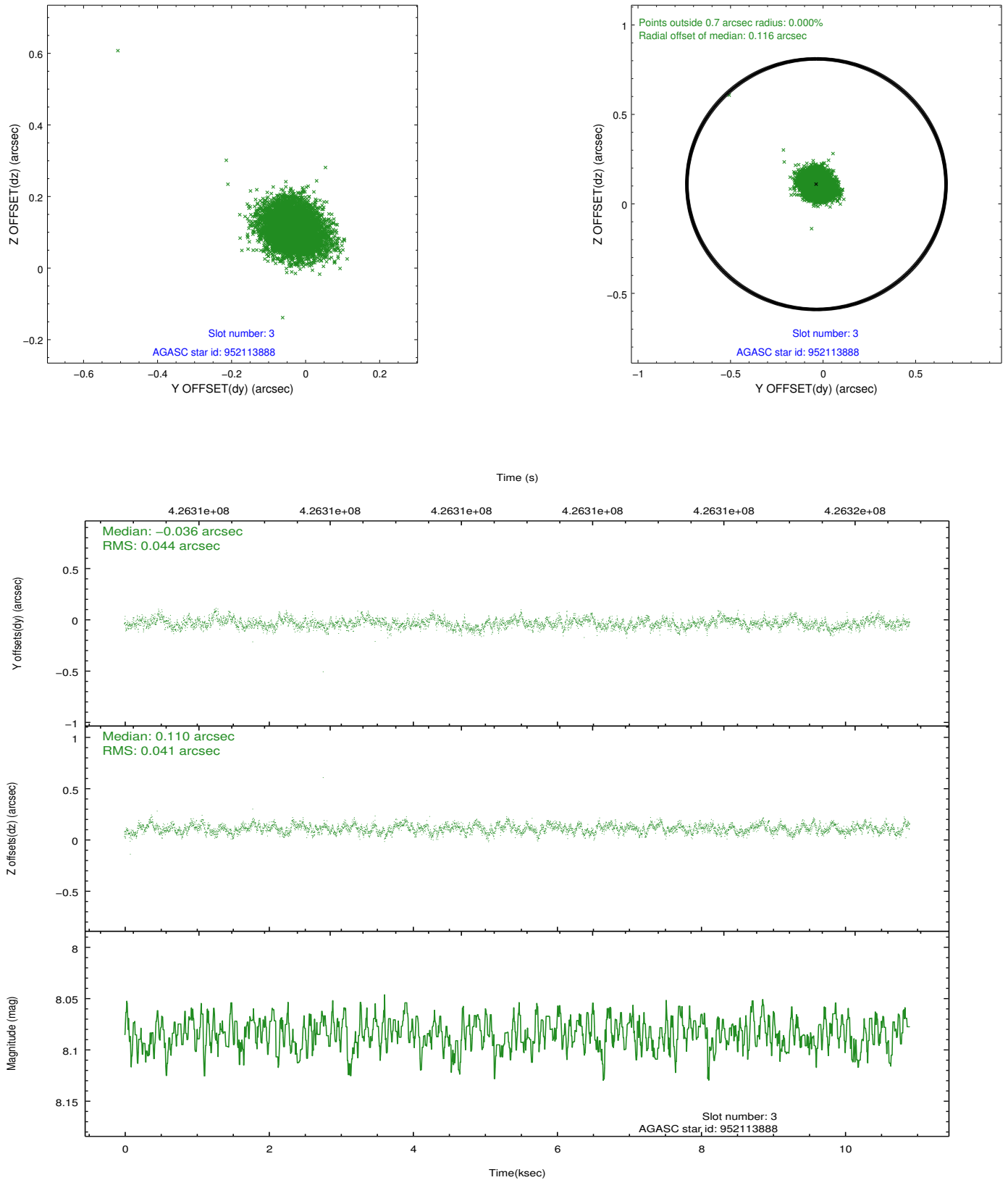


### Slot Statistics

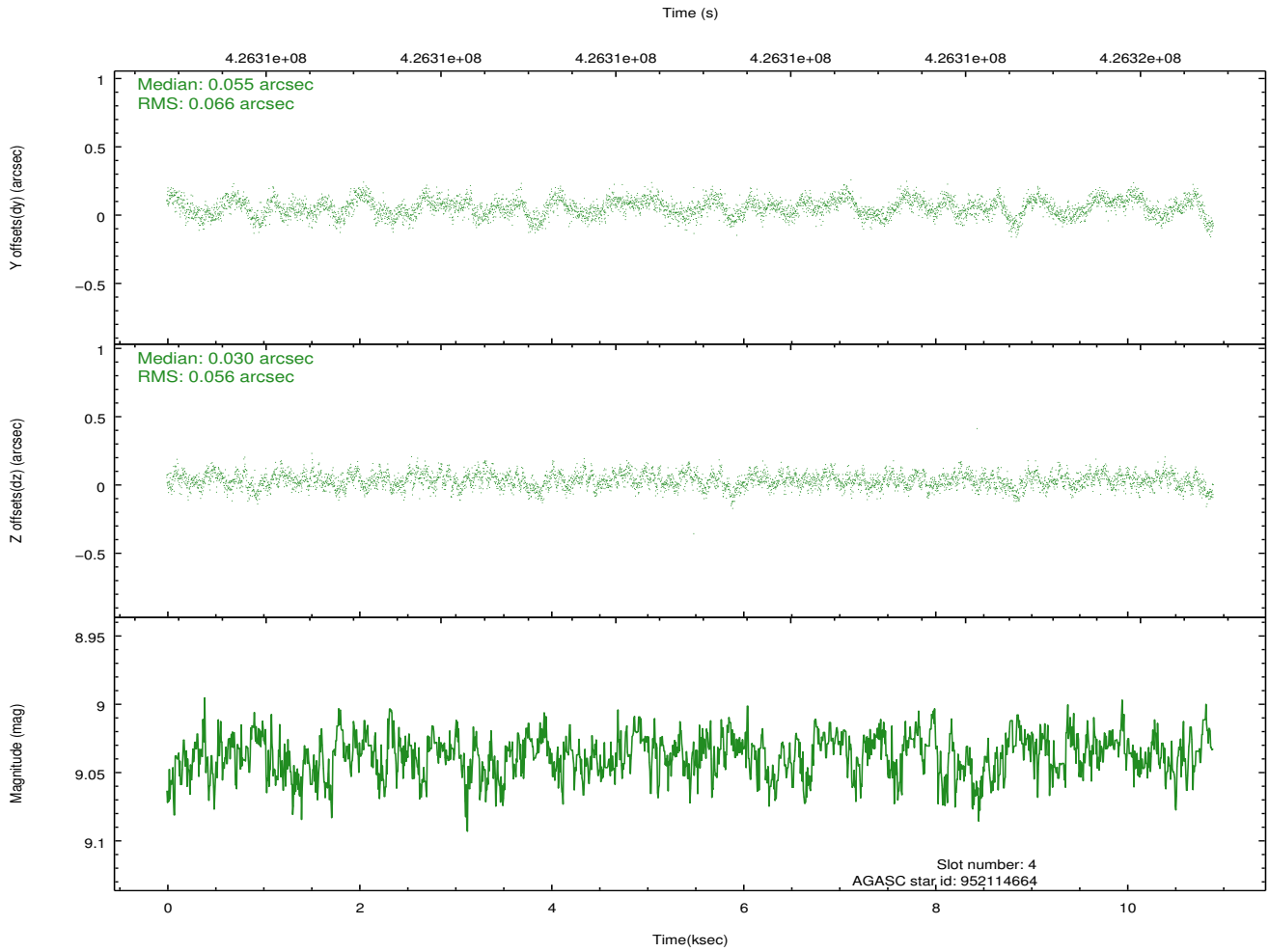
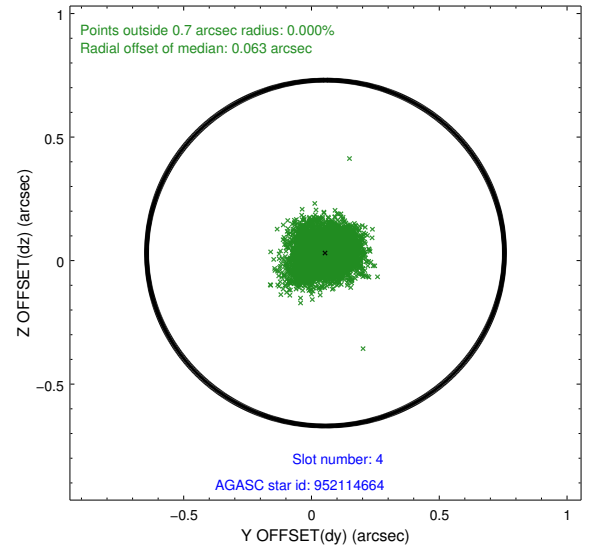
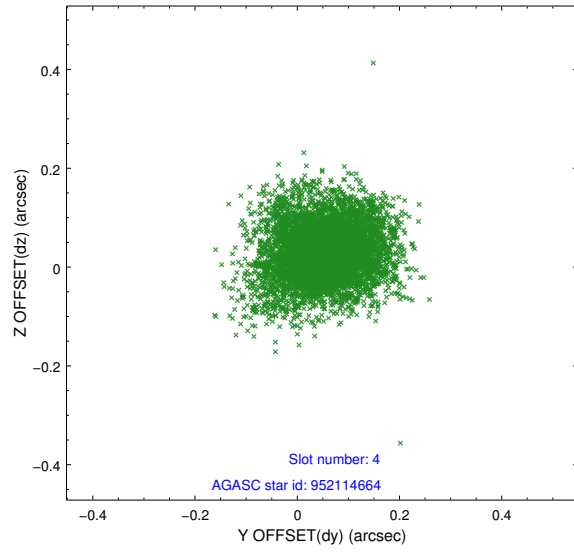
slot	status	id	mag	n_pts	med_dy	med_dz	dr1	dr2	ra	dec	mean_y	mean_z
0	FID	ACIS-S-2	6.99	2659	-0.120	-0.090	0.008	0.013	0.000000	0.000000	-770.72	-1736.71
1	FID	ACIS-S-4	7.07	2659	0.178	0.038	0.007	0.012	0.000000	0.000000	2142.64	171.41
2	FID	ACIS-S-6	7.21	2659	-0.085	0.060	0.007	0.012	0.000000	0.000000	391.90	809.37
3	GUIDE	952113888	8.08	5314	-0.036	0.110	0.063	0.101	201.647854	-31.450482	-806.99	631.83
4	GUIDE	952114664	9.04	5313	0.055	0.030	0.092	0.147	201.542617	-31.430449	-784.76	301.77
5	GUIDE	952114936	8.49	5315	-0.027	0.359	0.082	0.132	201.294532	-31.198626	-1367.15	-666.41
6	GUIDE	952115624	8.86	5315	0.083	-0.490	0.071	0.115	201.610177	-31.193444	-1662.13	258.35
7	GUIDE	952111384	9.53	5313	-0.077	-0.004	0.121	0.198	200.542065	-31.669320	923.43	-2390.21

## 2.4 Star Slots

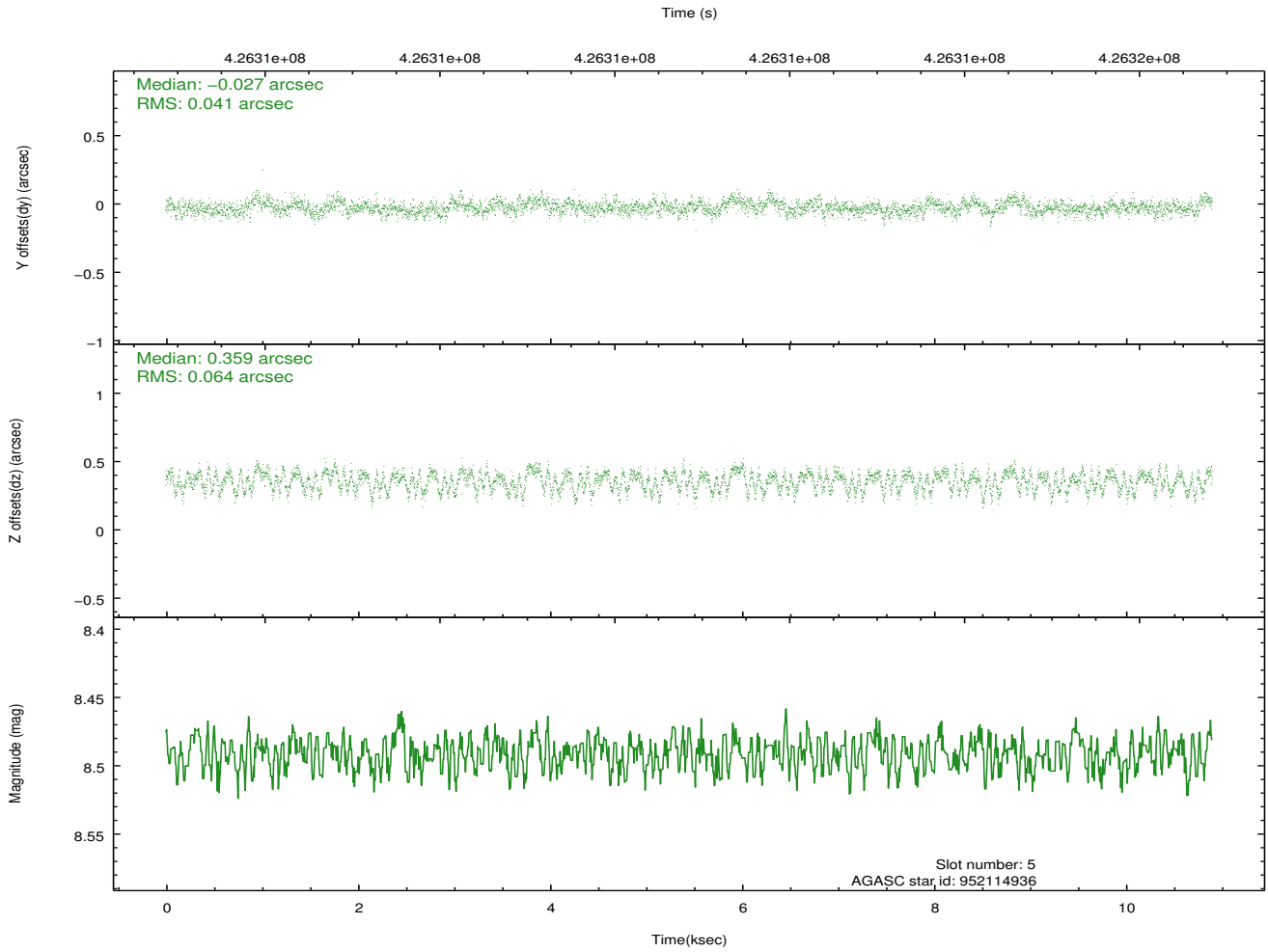
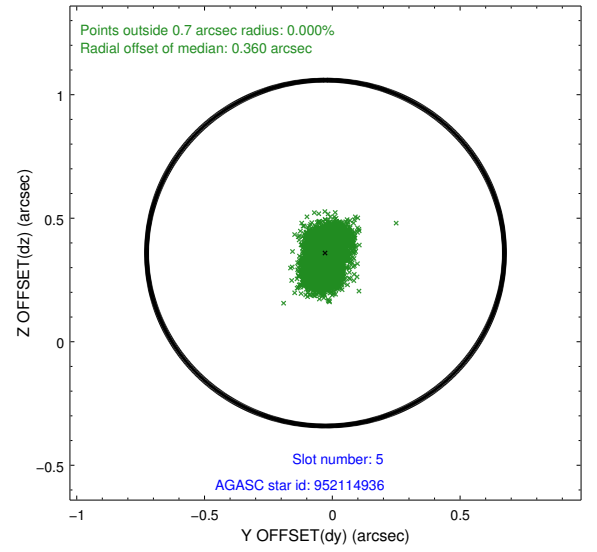
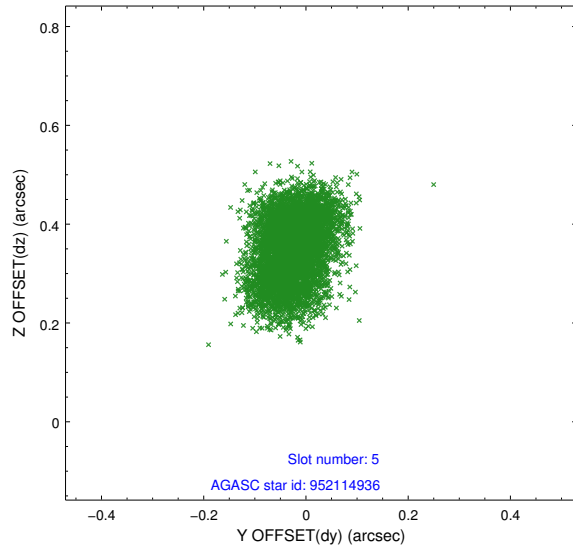
### 2.4.1 Slot 3



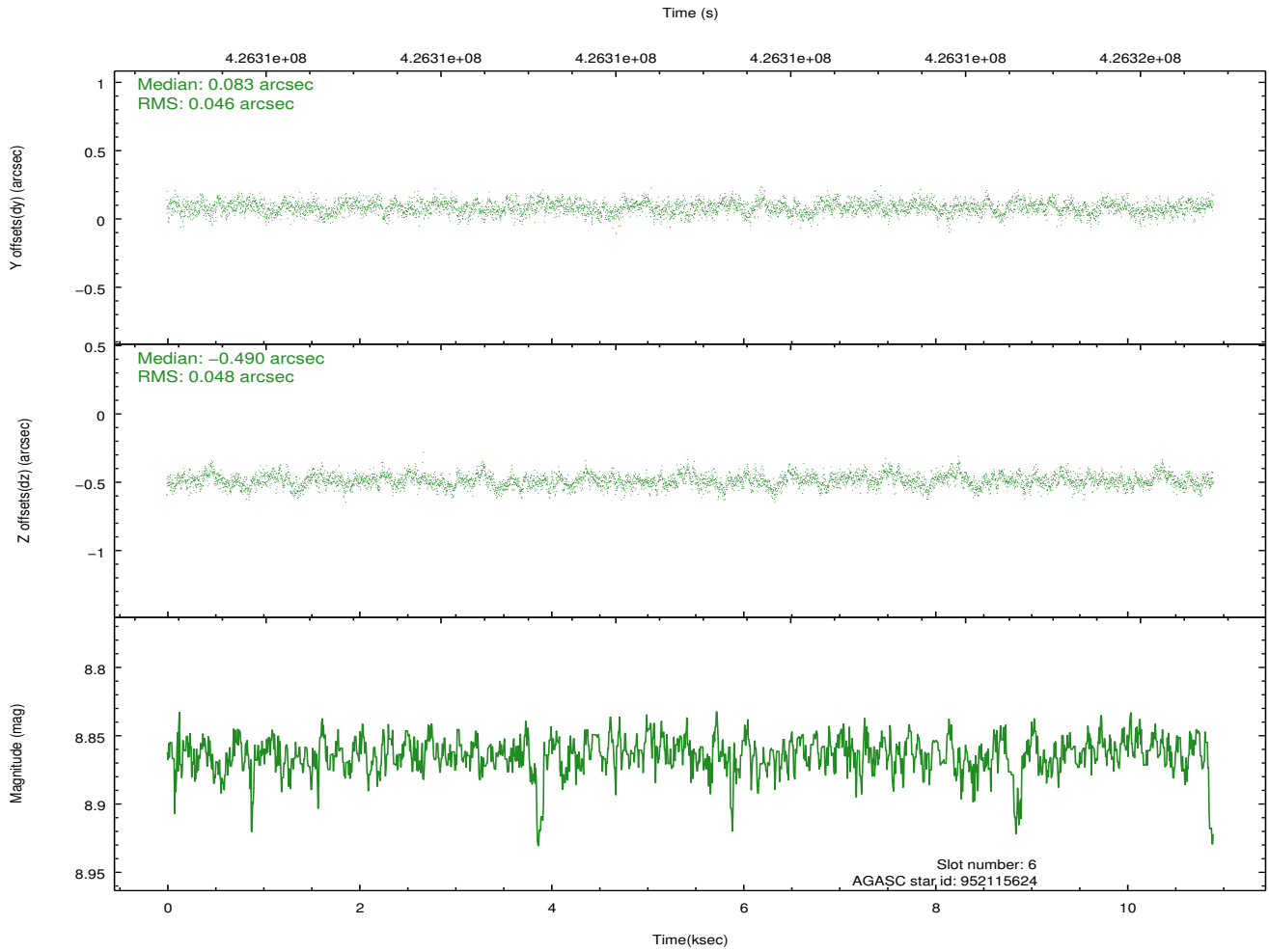
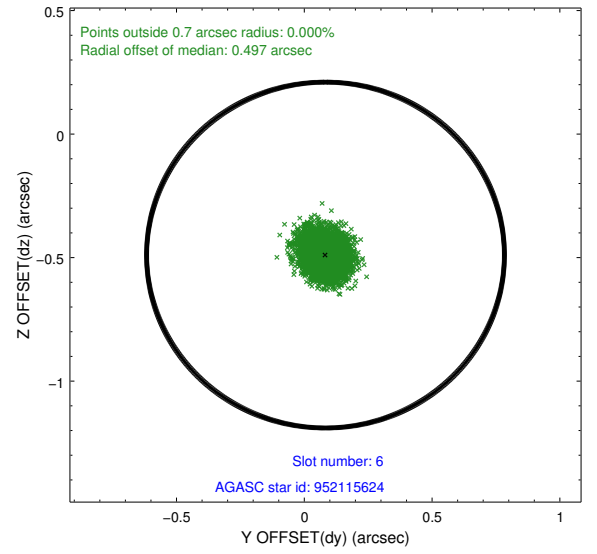
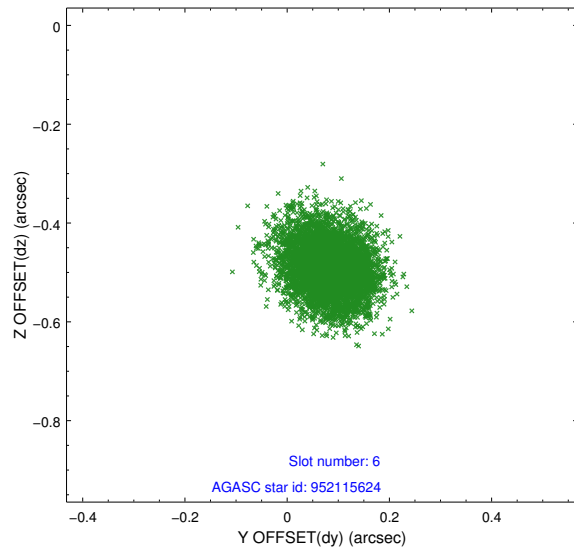
## 2.4.2 Slot 4



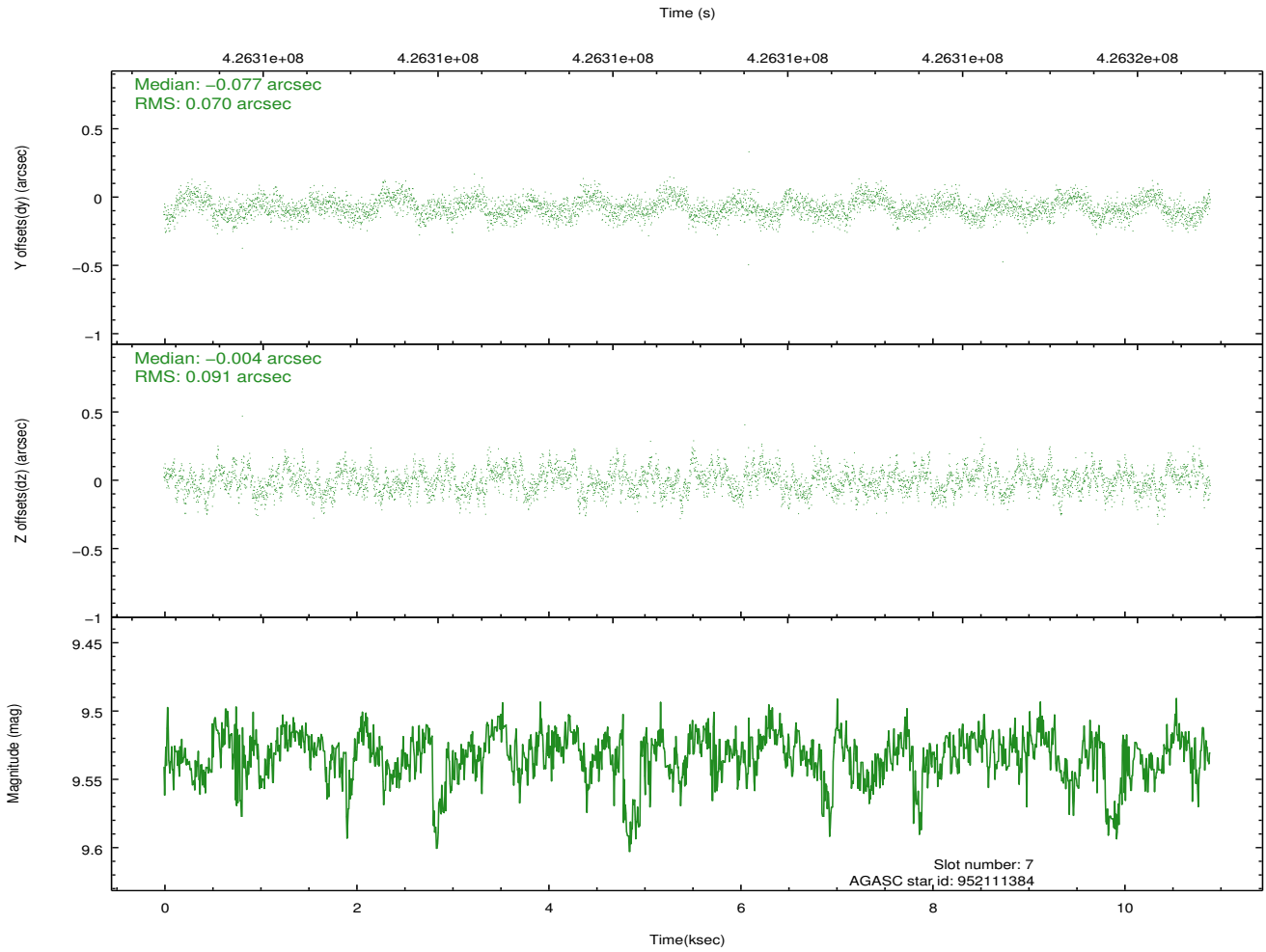
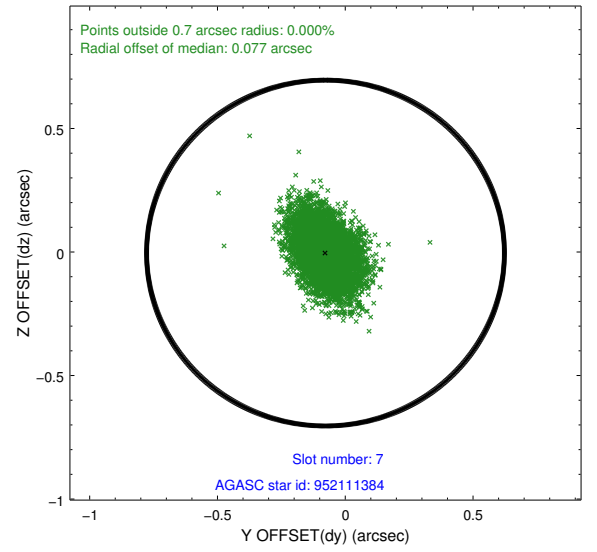
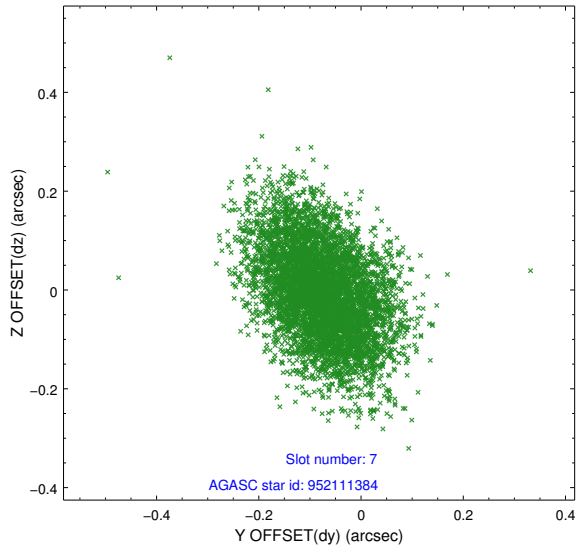
### 2.4.3 Slot 5



## 2.4.4 Slot 6

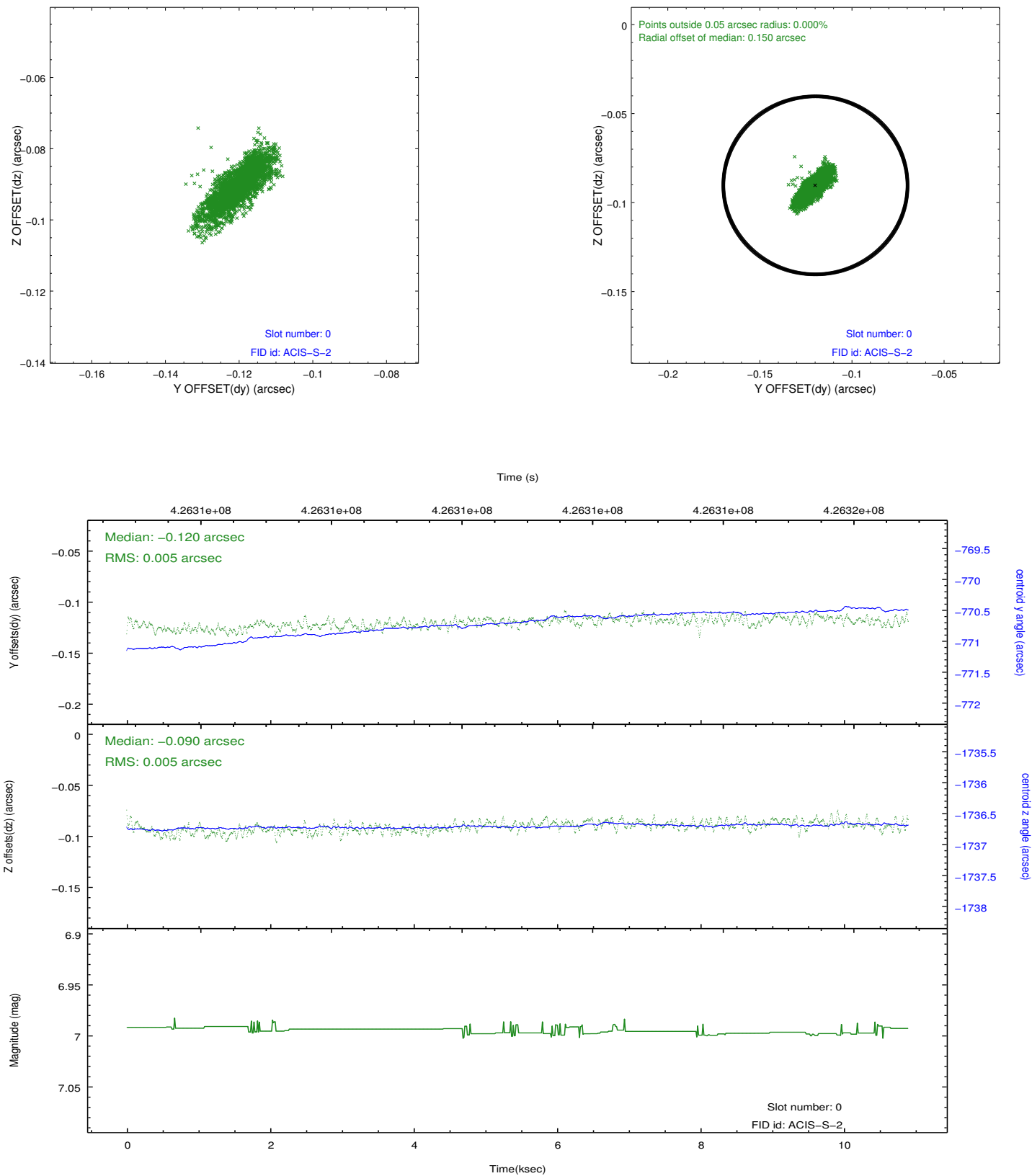


## 2.4.5 Slot 7

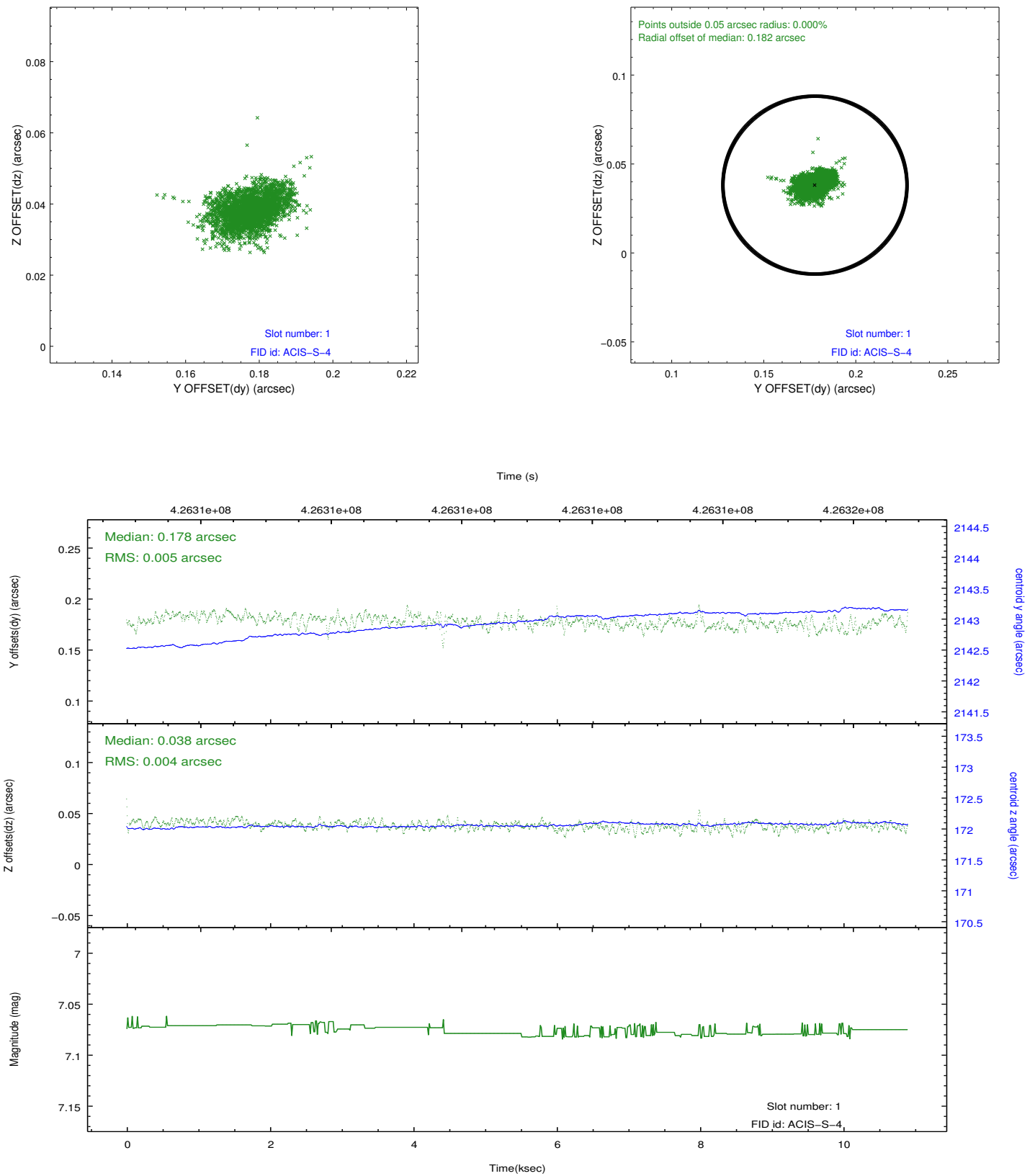


## 2.5 FID Slots

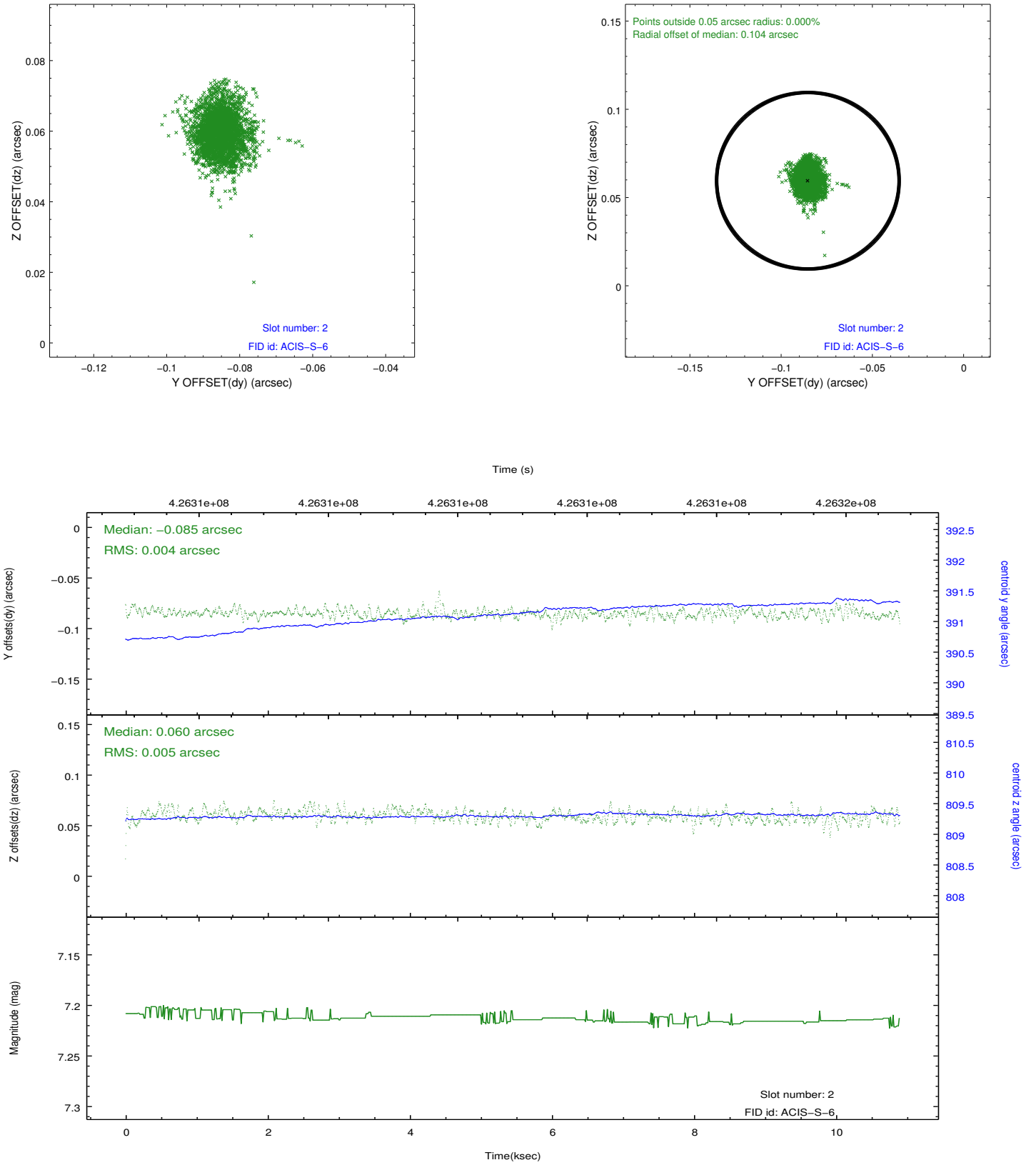
### 2.5.1 Slot 0



## 2.5.2 Slot 1



### 2.5.3 Slot 2



## A Summary

### A.1 Status

V&V Scientist	Jen Lauer
V&V Date (YYYY-MM-DD)	2012.03.20
V&V Edition	1
V&V Disposition and Status	OK
V&V Charge Time	10.248641421258

### A.2 Comments