

V&V Reference Report

L2 ASCDS Version : 8.4.3

Observation 12925 - L2 Version 2
Chandra X-Ray Center

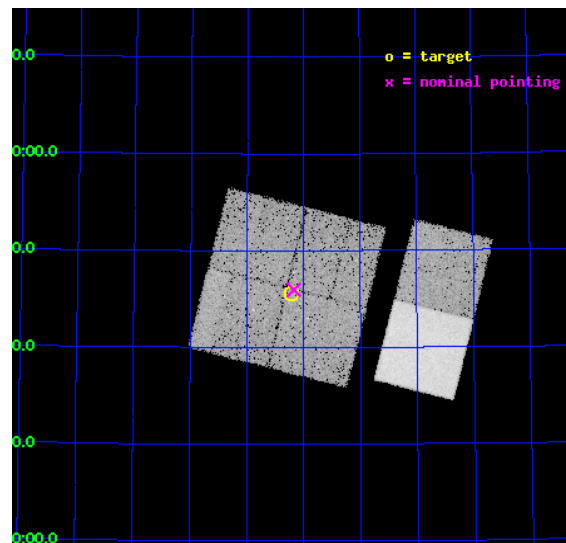
L2 Processing Date : Feb 7 2012

Contents

1	Front	2
2	OBI	3
2.1	OBI	3
2.1.1	Images	3
2.1.2	Bias	3
2.1.3	Parameters	4
2.1.4	Events	4
2.2	Compared Parameters	5
2.3	Aspect	6
2.4	Star Slots	9
2.4.1	Slot 3	9
2.4.2	Slot 4	10
2.4.3	Slot 5	11
2.4.4	Slot 6	12
2.4.5	Slot 7	13
2.5	FID Slots	14
2.5.1	Slot 0	14
2.5.2	Slot 1	15
2.5.3	Slot 2	16
A	Summary	17
A.1	Status	17
A.2	Comments	17

1 Front

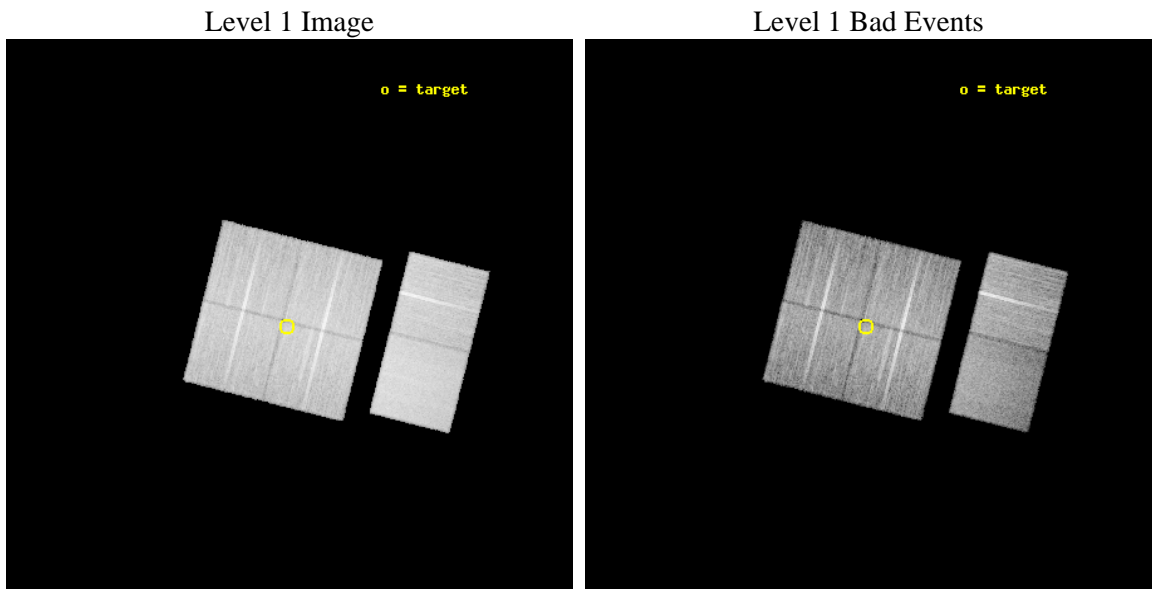
seq_num	900957	Sequence number
obs_id	12925	Observation id
title	Filling the 15 micron Gap: Search for Compton-thick Accretion with Chandra and AKARI in the NEP Deep Field	Proposal title
observer	Dr. Mirko Krumpe	Principal investigator
object	AKARI-NEP-Deep Field	Source name
dtcycle	0	
cycle	P	events from which exps? Prim/Second/Both
ra_targ	268.55417	Observer's specified target RA [deg]
dec_targ	66.759167	Observer's specified target Dec [deg]
ra_nom	268.54348105195	Nominal RA [deg]
dec_nom	66.766075196358	Nominal Dec [deg]
roll_nom	104.14702519669	Nominal Roll [deg]
revision	2	Processing version of data
ontime	24054.370889008	Sum of GTIs [s]
livetime	23749.779961008	Livetime [s]
ontime0	24054.247768998	Sum of GTIs [s]
ontime1	24054.288809001	Sum of GTIs [s]
ontime2	24054.329849005	Sum of GTIs [s]
ontime3	24054.370889008	Sum of GTIs [s]
ontime6	24051.158940136	Sum of GTIs [s]
ontime7	24054.39991045	Sum of GTIs [s]
l2events	155014	Number of level 2 events



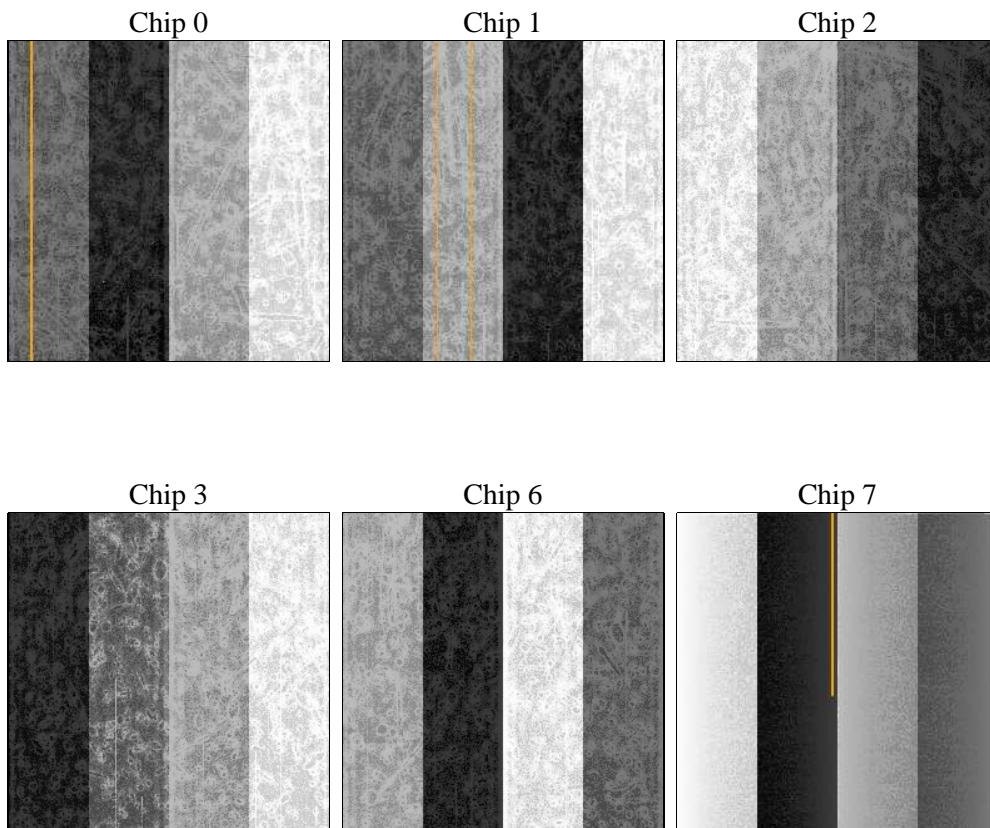
2 OBI

2.1 OBI

2.1.1 Images



2.1.2 Bias



2.1.3 Parameters

obi_num	1	Obi number	sched_exp_time	24000.000000	[s] Scheduled observation exposure time
ascdsver	8.4.3	Processing system revision	ontime	24054.370889008	Sum of GTIs [s]
caldsver	4.4.7	 	ontime0	24054.247768998	Sum of GTIs [s]
date	2012-02-07T14:01:18	Date and time of file creation	ontime1	24054.288809001	Sum of GTIs [s]
revision	2	Processing version of data	ontime2	24054.329849005	Sum of GTIs [s]
			ontime3	24054.370889008	Sum of GTIs [s]
			ontime6	24051.158940136	Sum of GTIs [s]
			ontime7	24054.39991045	Sum of GTIs [s]
			l1events	924621	Number of level 1 events

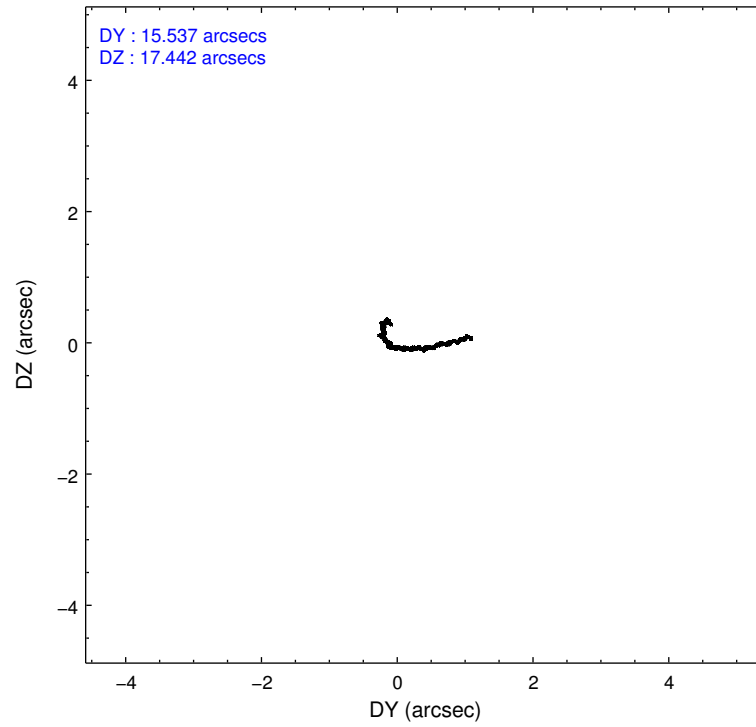
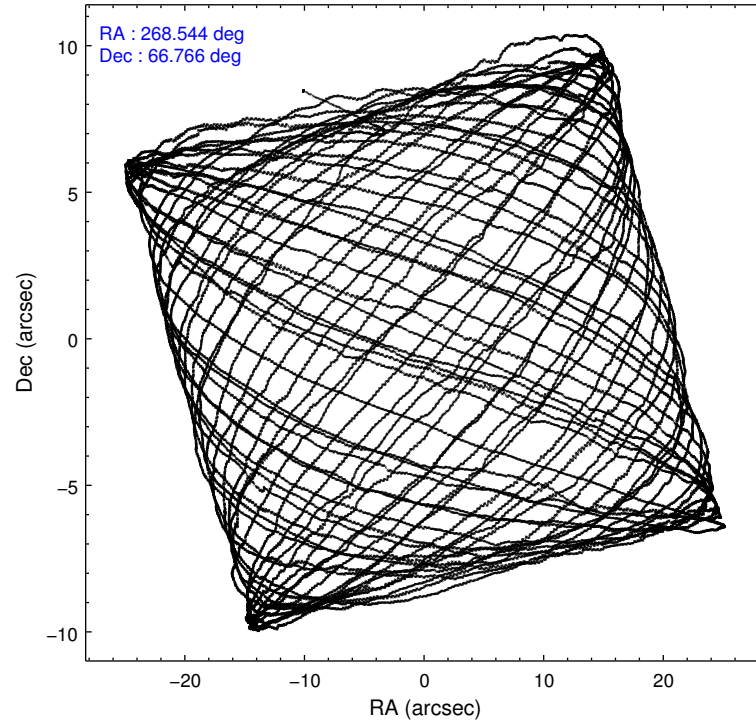
2.1.4 Events

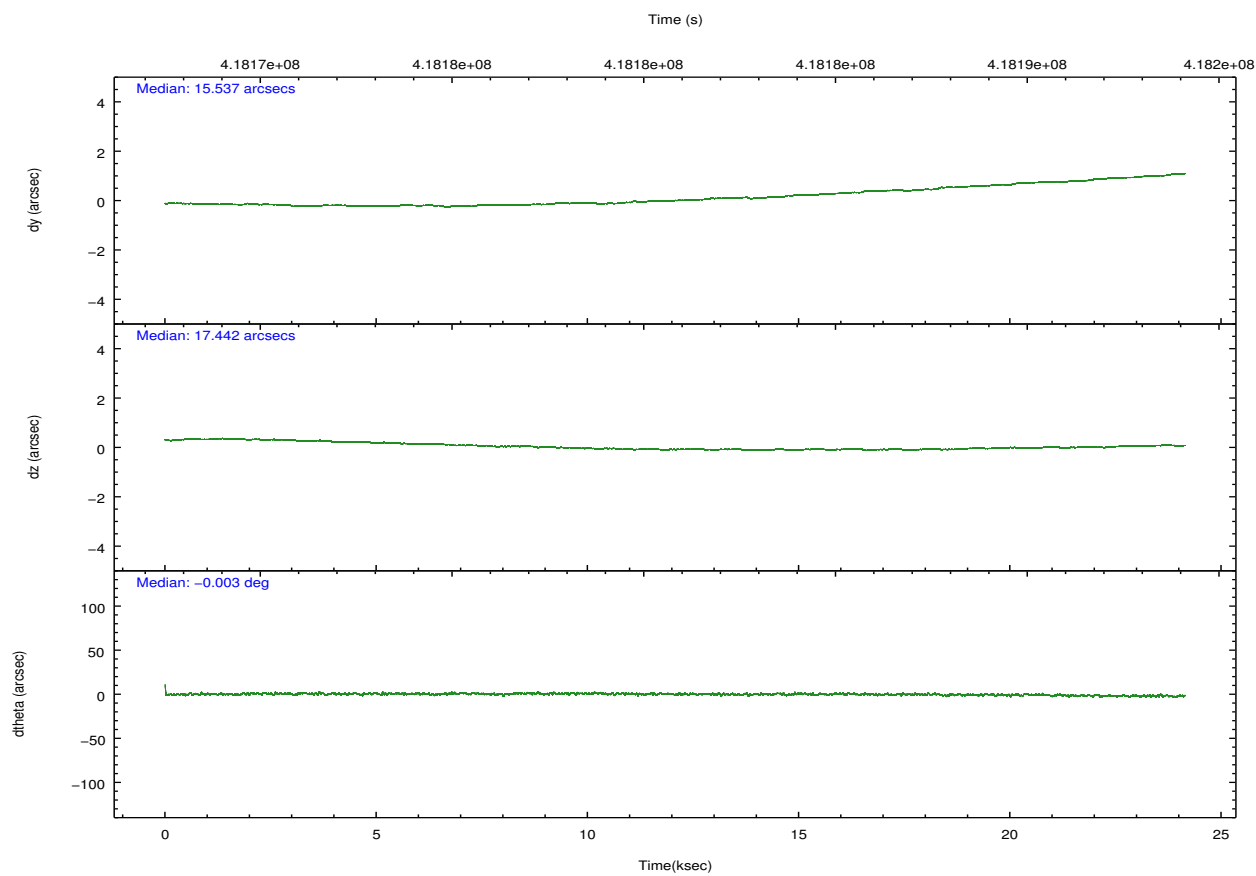
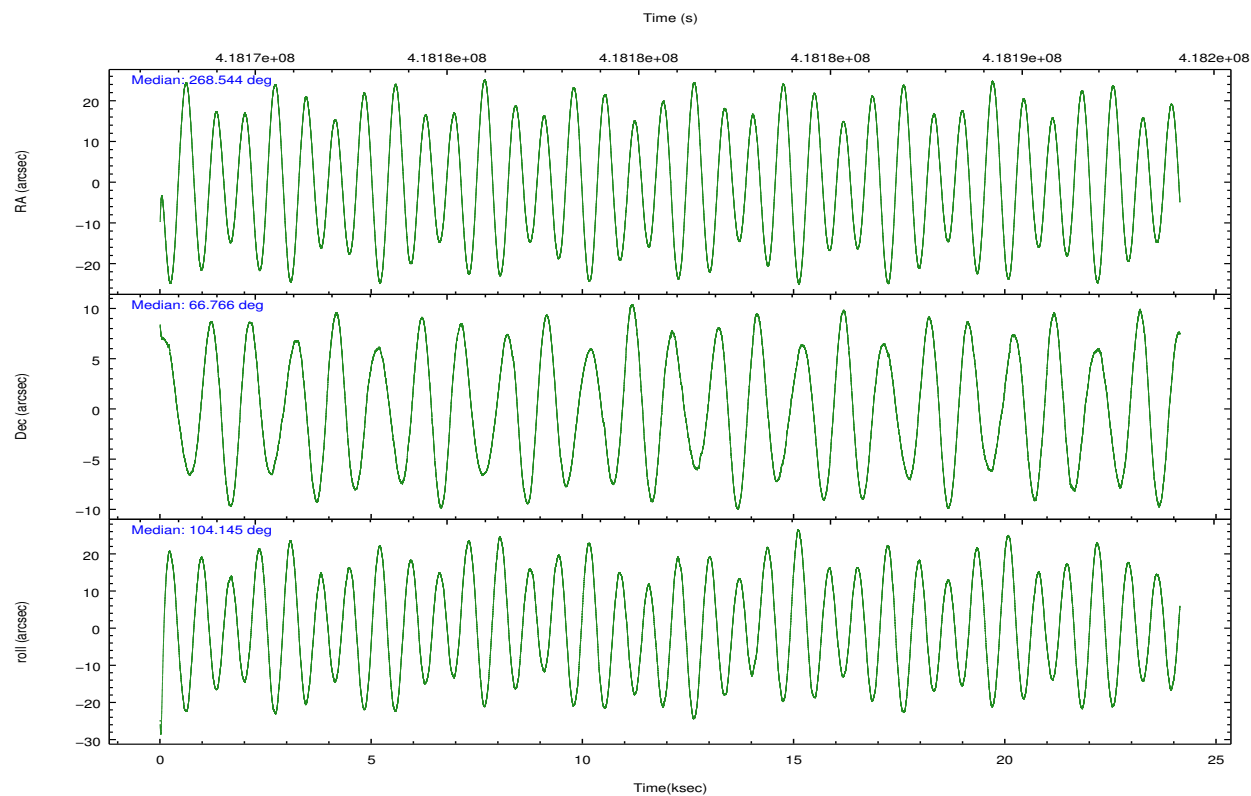
	ccd 0	ccd 1	ccd 2	ccd 3	ccd 6	ccd 7		ccd 0	ccd 1	ccd 2	ccd 3	ccd 6	ccd 7
level 1 events	136763	137864	153386	147104	159379	190125	grade 0 events	5819	6638	5825	5560	6057	7871
rejected events	120003	119197	136933	131240	141663	104601		4%	4%	3%	3%	3%	4%
rejected %	87%	86%	89%	89%	88%	55%	grade 1 events	83	89	92	91	90	235
								0%	0%	0%	0%	0%	0%
							grade 2 events	4170	4446	4138	3601	4083	17564
								3%	3%	2%	2%	2%	9%
							grade 3 events	1767	1867	1690	1750	1812	7684
								1%	1%	1%	1%	1%	4%
							grade 4 events	1665	1919	1679	1776	1754	7677
								1%	1%	1%	1%	1%	4%
							grade 5 events	6356	6799	6058	7074	7306	20430
								4%	4%	3%	4%	4%	10%
							grade 6 events	3342	3798	3123	3179	4012	44737
								2%	2%	2%	2%	2%	23%
							grade 7 events	113561	112308	130781	124073	134265	83927
								83%	81%	85%	84%	84%	44%

2.2 Compared Parameters

Parameter	Planned	Actual	Parameter	Planned	Actual
Instrument	ACIS	ACIS	Obspar format version number	7	7
Detector	ACIS-012367	ACIS-012367	Obspar file type	PREDICTED	ACTUAL
Grating	NONE	NONE	Obspar update status	NONE	UPDATED
Data mode	VFAINT	VFAINT	CCD I0 on	Y	Y
Observation mode	POINTING	POINTING	CCD I1 on	Y	Y
[deg] Pointing RA	268.592201	268.5434810519517	CCD I2 on	Y	Y
[deg] Pointing Dec	66.746400	66.76607519635782	CCD I3 on	Y	Y
[deg] Pointing Roll	103.893585	104.1470251966851	CCD S0 on	N	N
[mm] SIM focus pos	-0.782348	-0.7809083437167272	CCD S1 on	N	N
[mm] SIM defocus	0	0.001439871863259334	CCD S2 on	O2	Y
[mm] SIM translation stage pos	-233.592463	-233.5874344608287	CCD S3 on	O1	Y
[mm] SIM translation stage offset	0	-0.005018542100998502	CCD S4 on	N	N
[s] Observation start time (MET)	418168881.184000	418167603.80851	CCD S5 on	N	N
Observation start date	2011-04-02T22:00:15	2011-04-02T21:40:03	Number of optional ACIS chips dropped	0	0
[s] Observation end time (MET)	418192881.184000	418194267.6474	On-chip summing requested	N	N
Observation end date	2011-04-03T04:40:15	2011-04-03T05:04:27	Subarray requested	NONE	NONE
Read mode	TIMED	TIMED	Alternating exposures requested	N	N
			[s] Primary exposure time	0.000000	3.2

2.3 Aspect



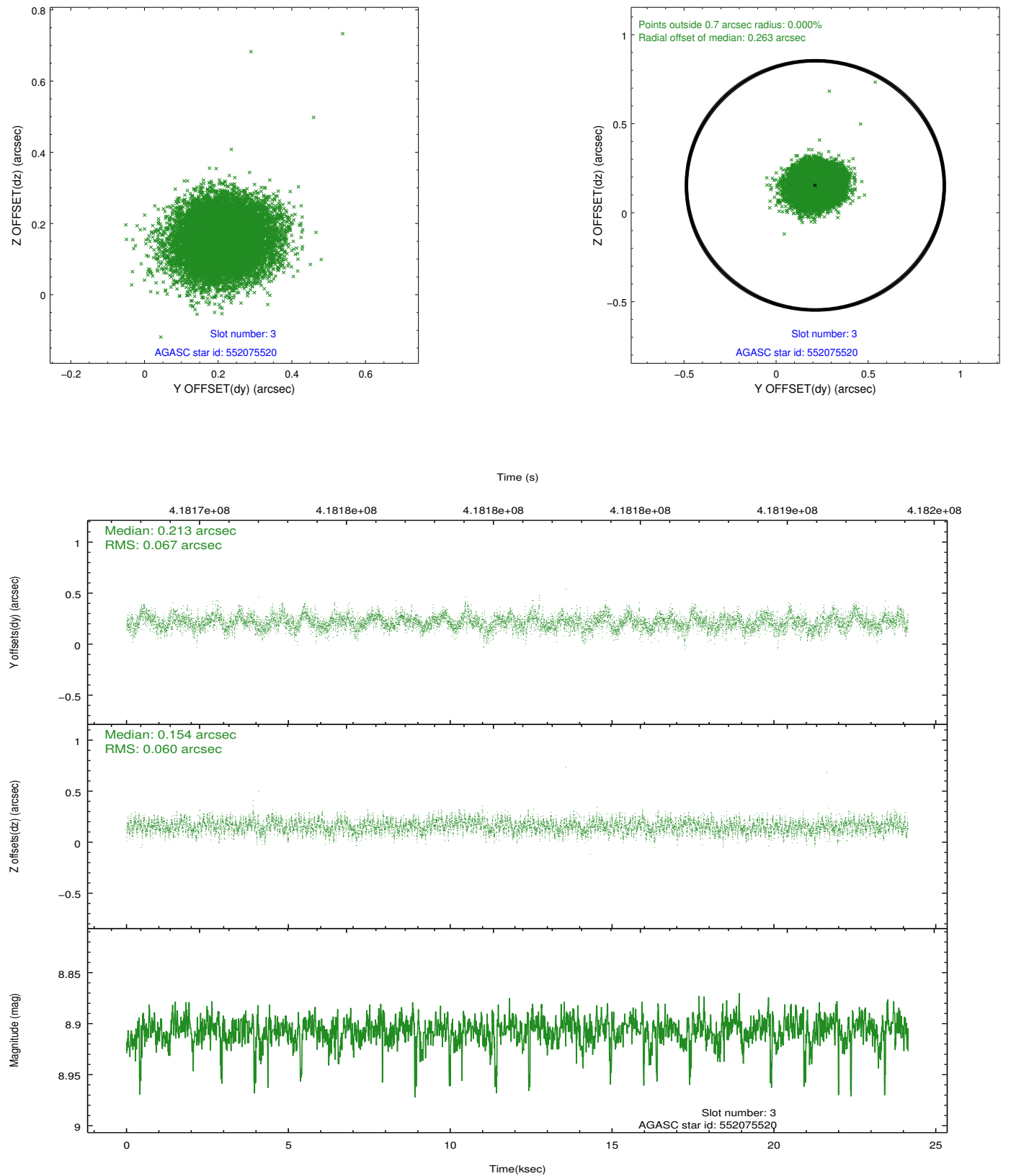


Slot Statistics

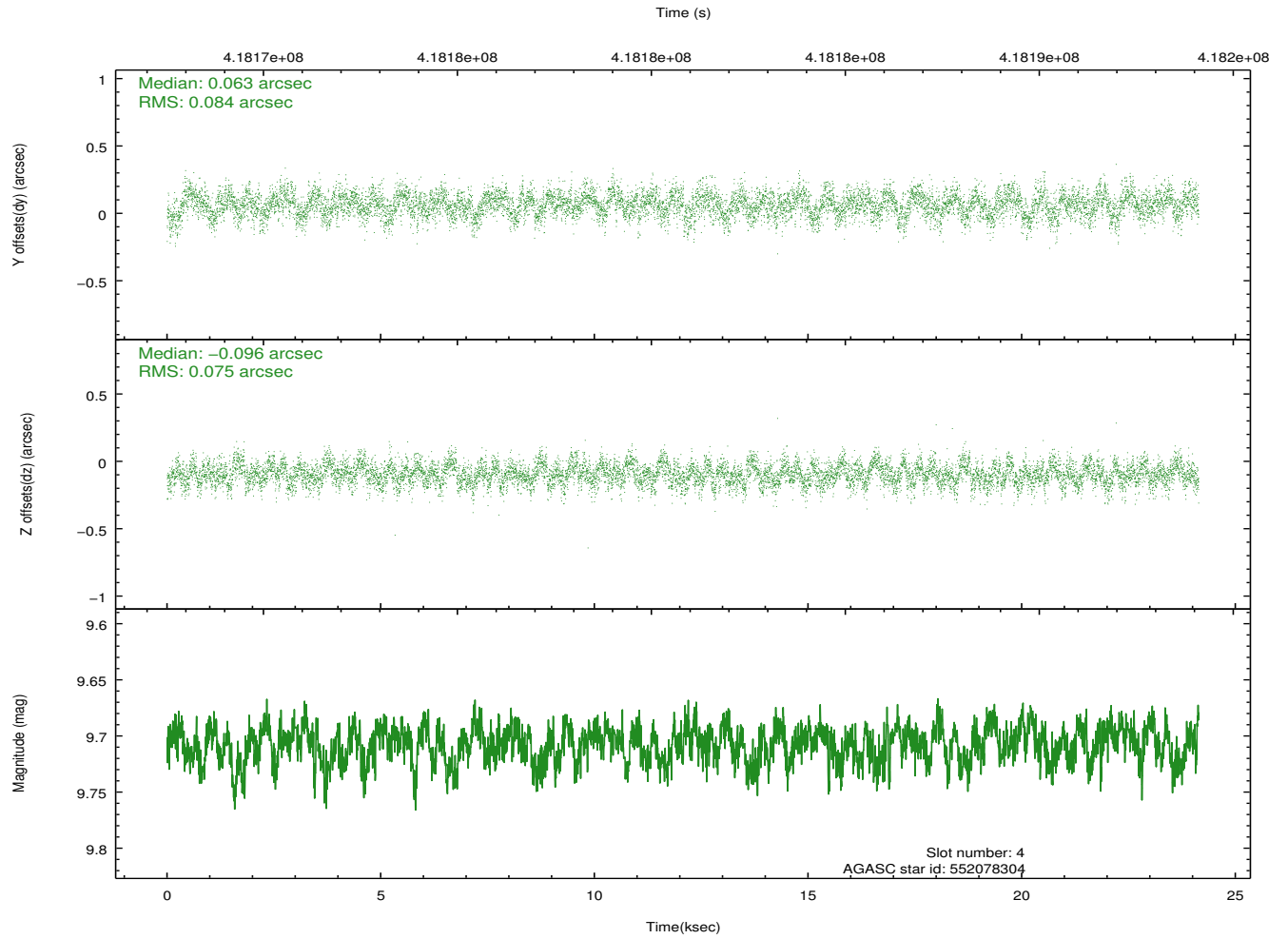
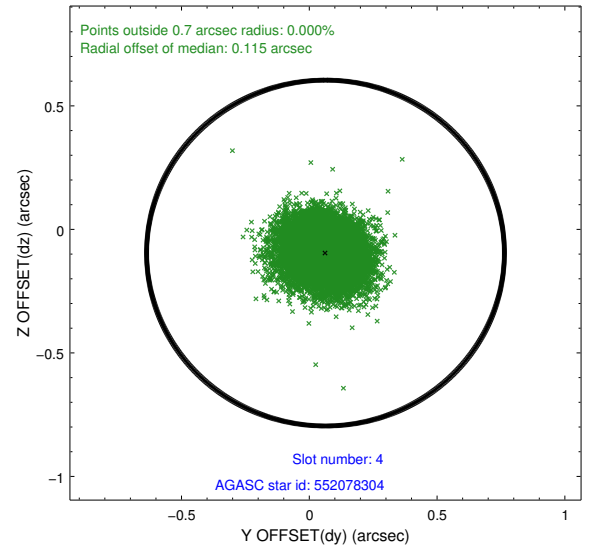
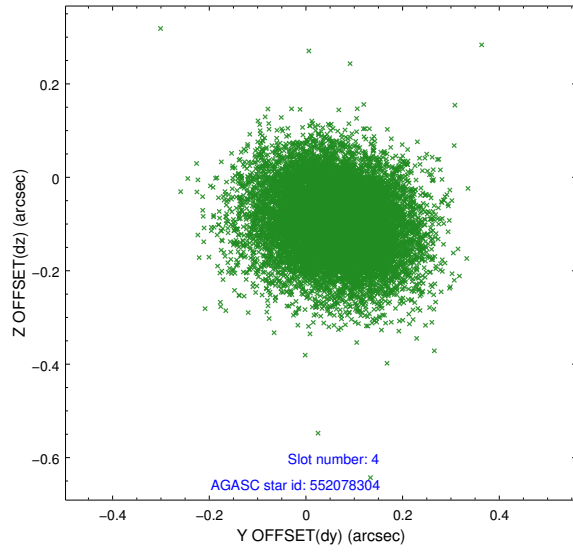
slot	status	id	mag	n_pts	med_dy	med_dz	dr1	dr2	ra	dec	mean_y	mean_z
0	FID	ACIS-I-2	6.92	5889	-0.180	-0.068	0.007	0.013	0.000000	0.000000	-770.60	-847.60
1	FID	ACIS-I-4	6.94	5888	0.072	0.135	0.011	0.022	0.000000	0.000000	2143.61	1058.77
2	FID	ACIS-I-6	7.02	5887	0.008	-0.004	0.014	0.023	0.000000	0.000000	389.77	1700.92
3	GUIDE	552075520	8.91	11771	0.213	0.154	0.095	0.153	269.430358	66.310622	-1805.82	-801.94
4	GUIDE	552078304	9.71	11755	0.063	-0.096	0.120	0.194	268.311513	66.266522	-1578.42	809.33
5	GUIDE	552082392	9.70	11761	-0.306	-0.160	0.194	0.305	267.761612	66.950878	1002.98	957.85
6	GUIDE	552079336	9.39	11764	0.020	-0.081	0.123	0.204	267.110070	67.265317	2332.64	1547.35
7	GUIDE	552216648	9.75	11746	-0.007	0.182	0.154	0.251	270.130141	67.075369	657.87	-2383.35

2.4 Star Slots

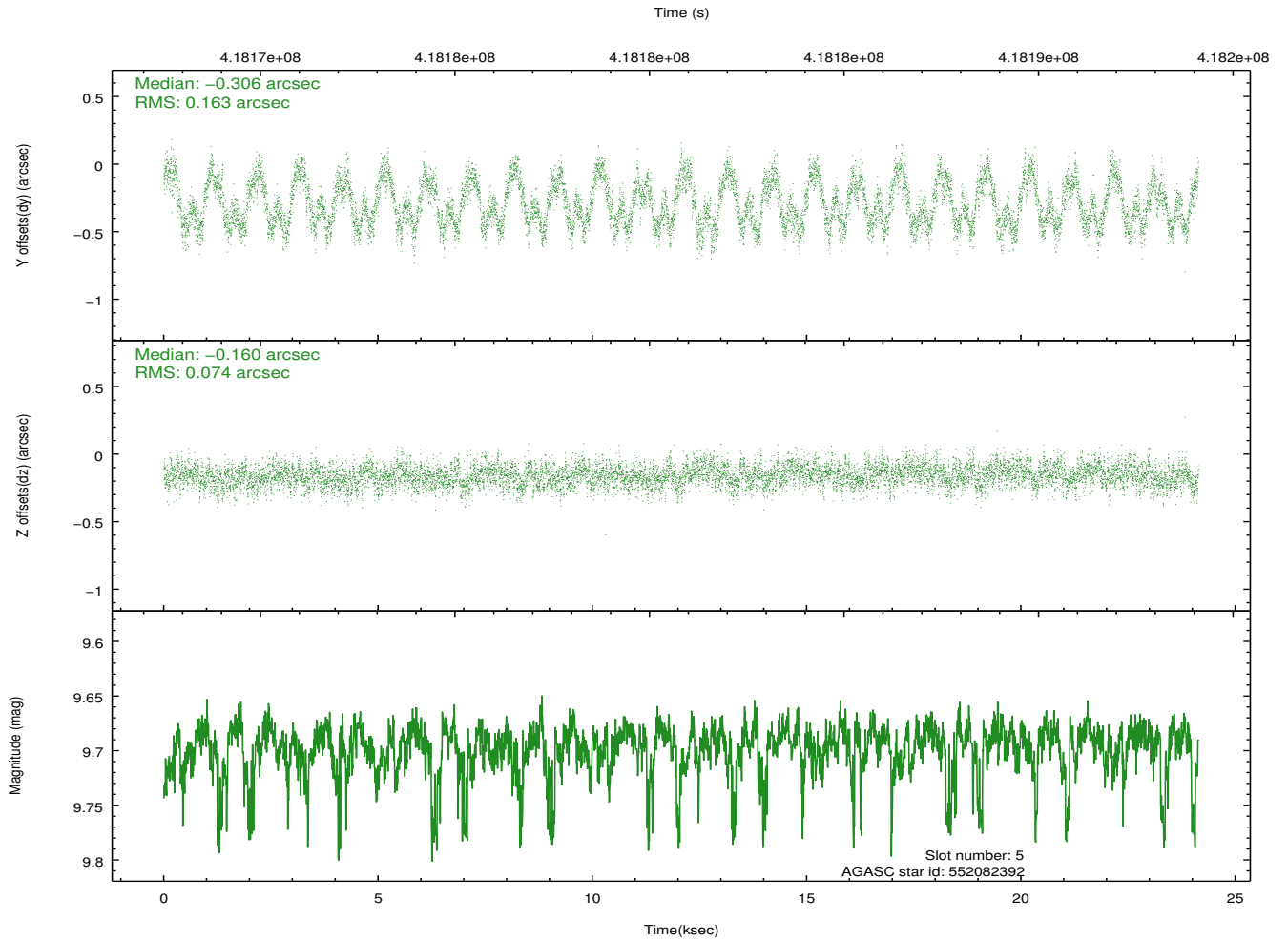
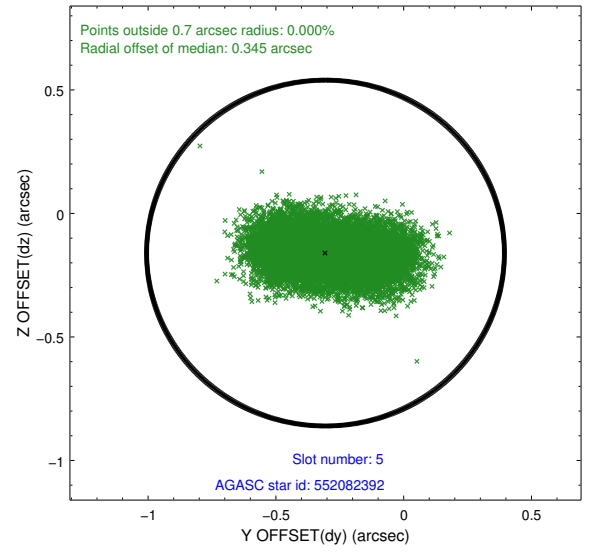
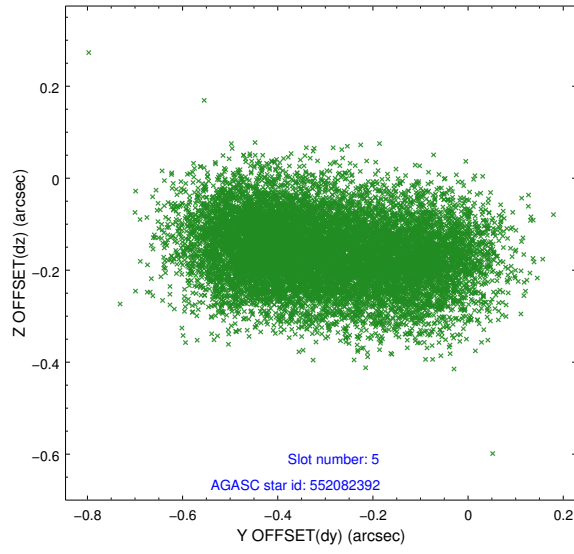
2.4.1 Slot 3



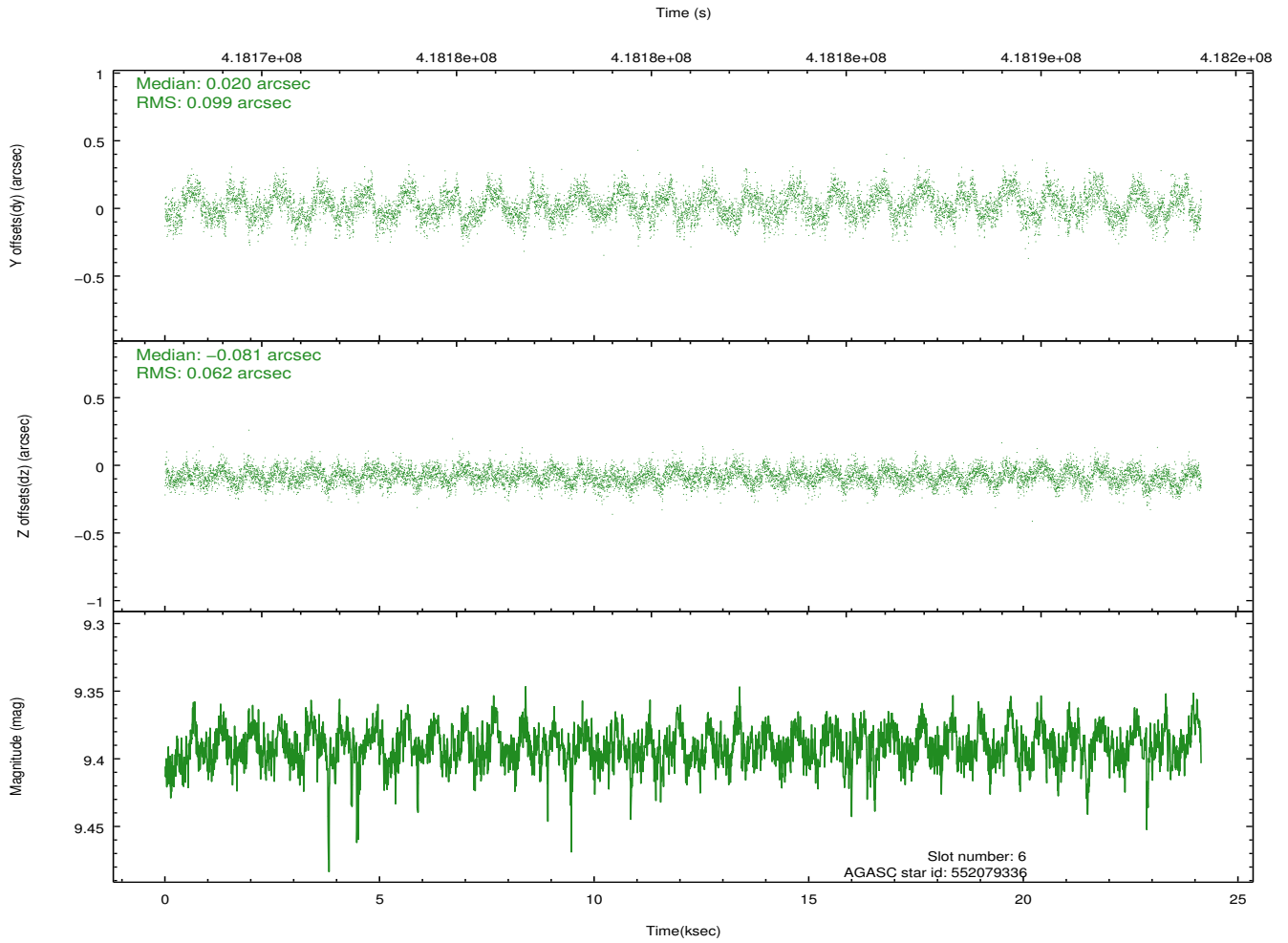
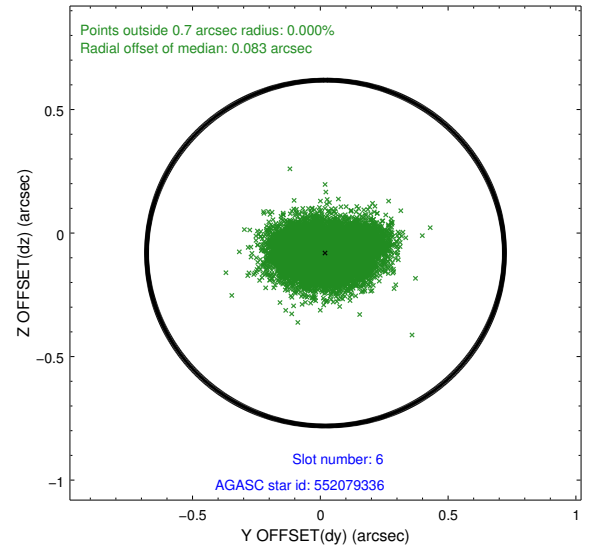
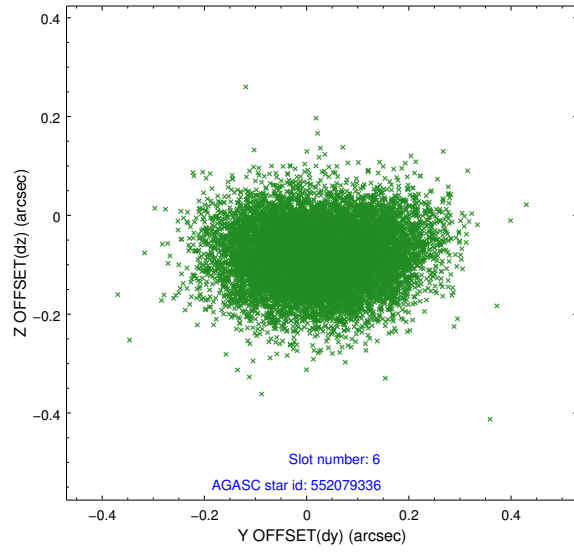
2.4.2 Slot 4



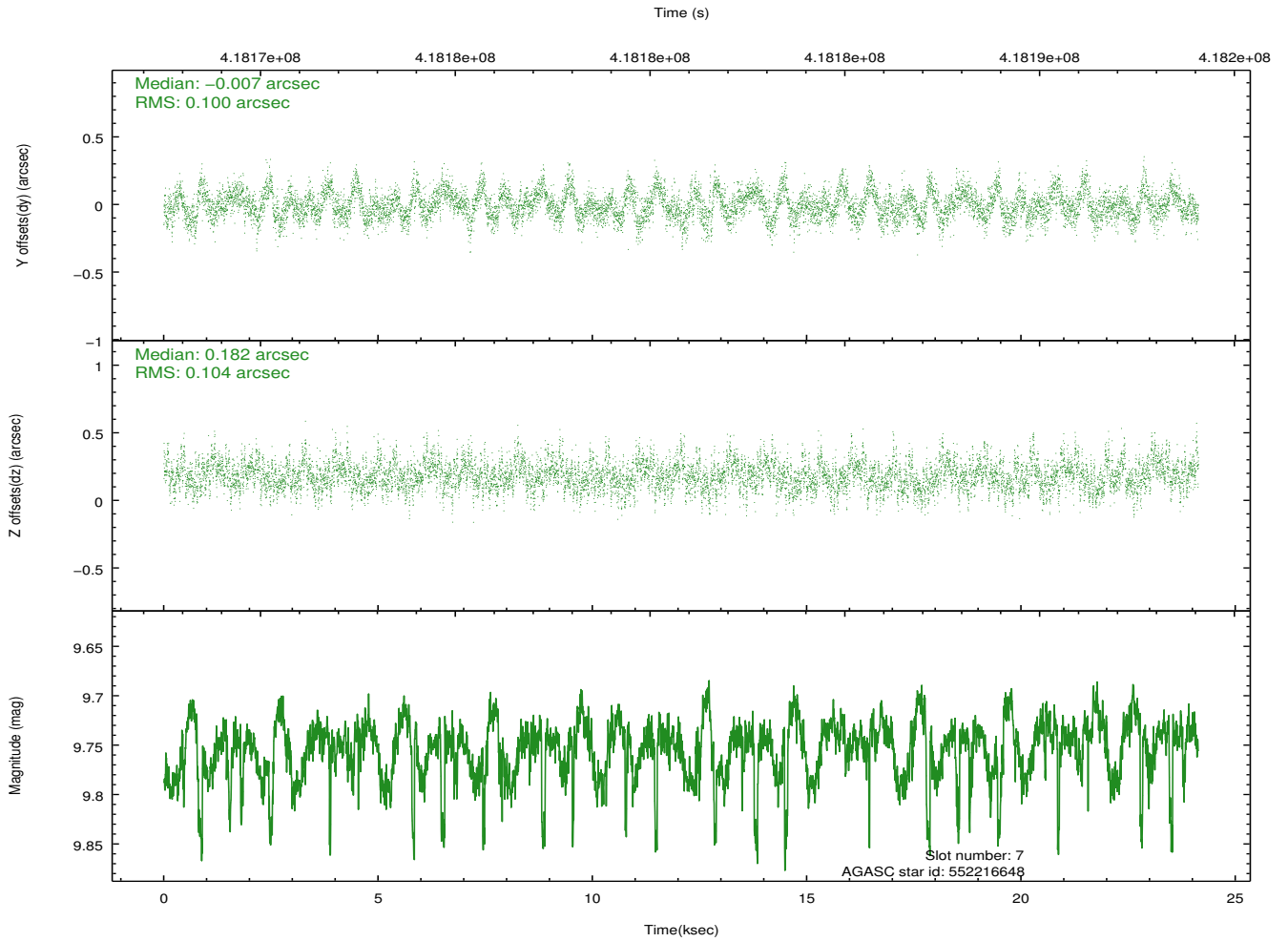
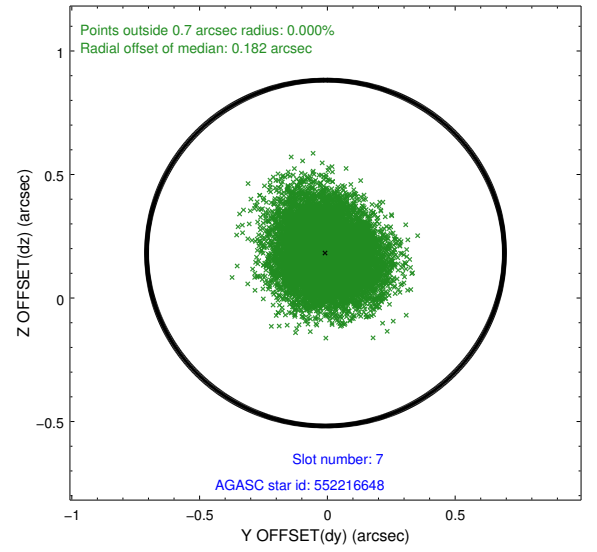
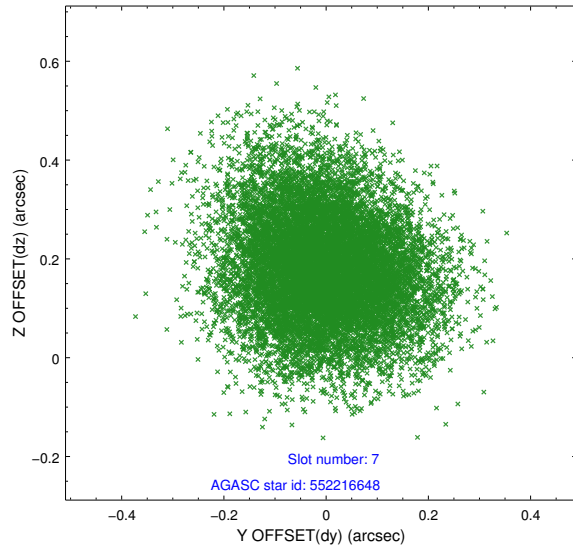
2.4.3 Slot 5



2.4.4 Slot 6

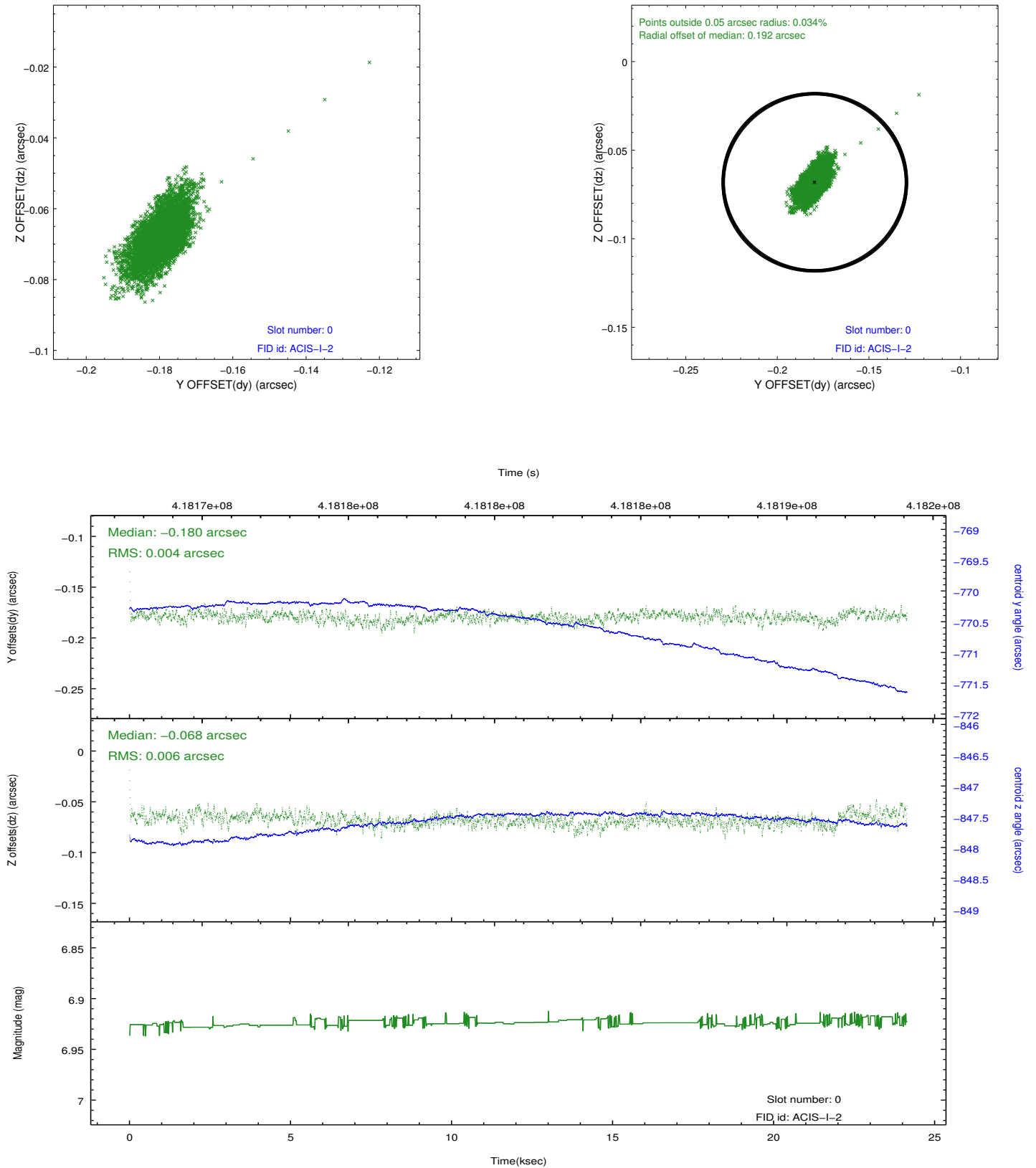


2.4.5 Slot 7

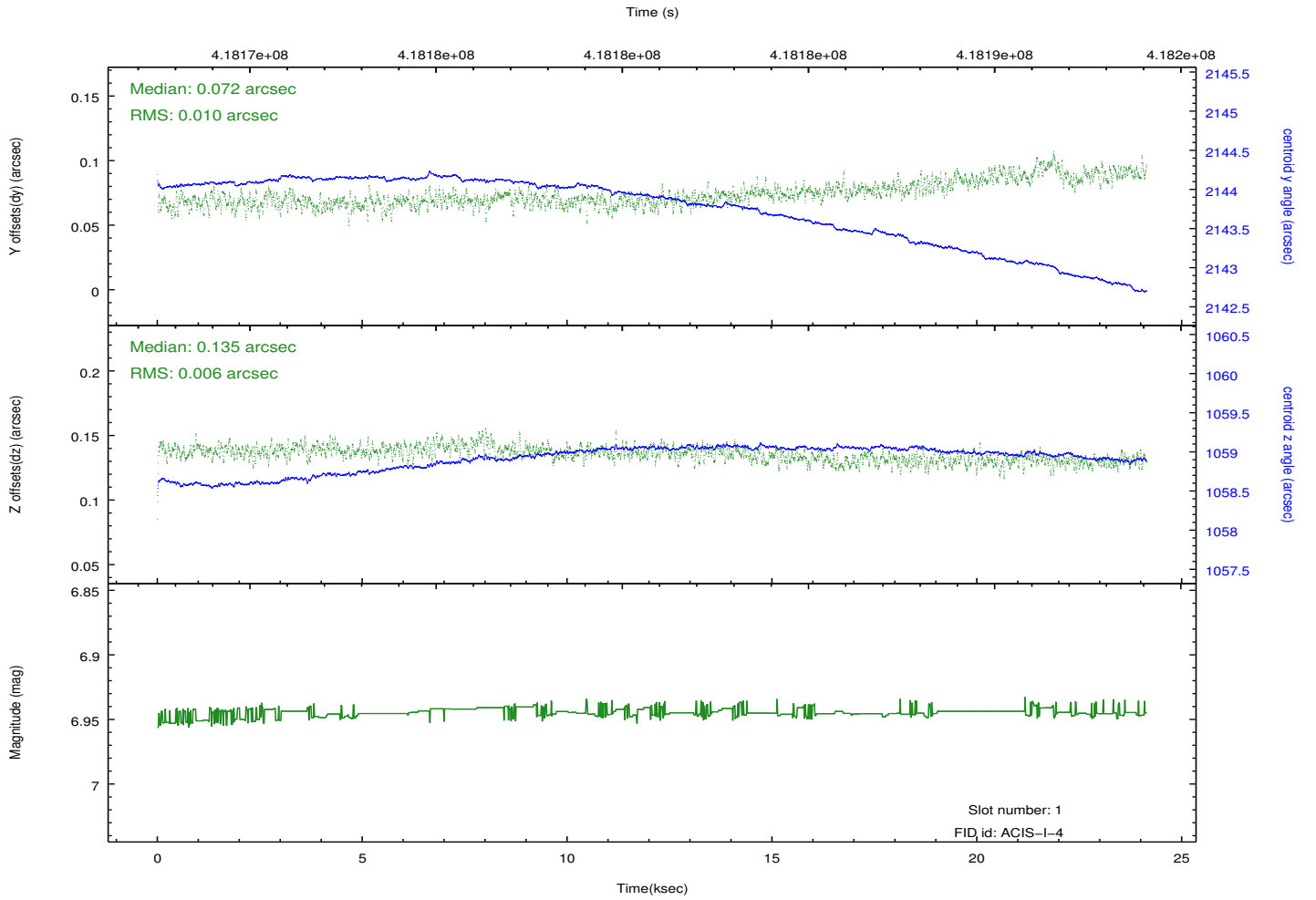
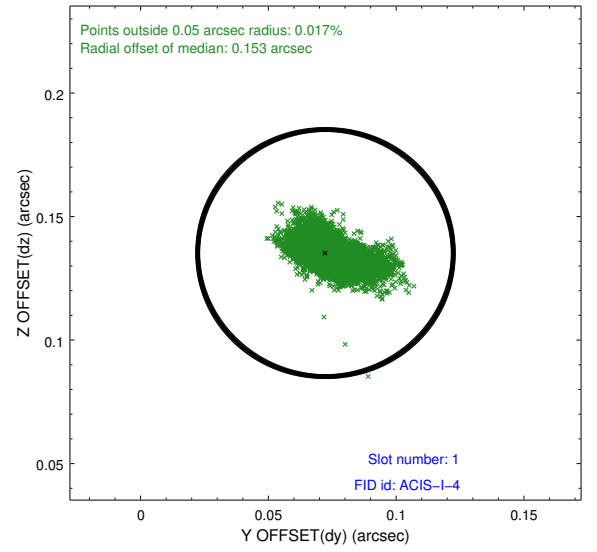
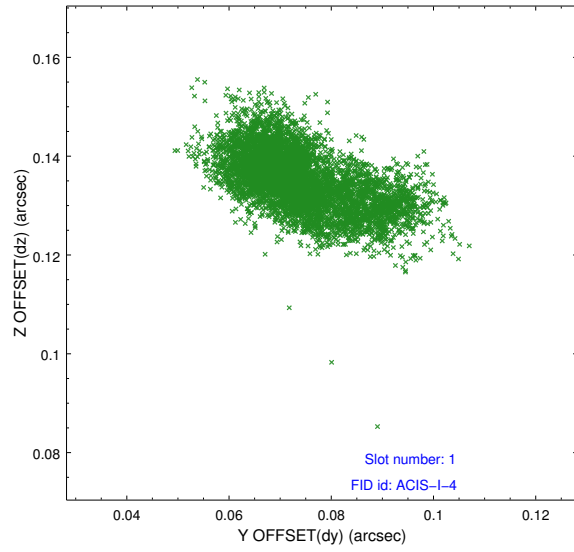


2.5 FID Slots

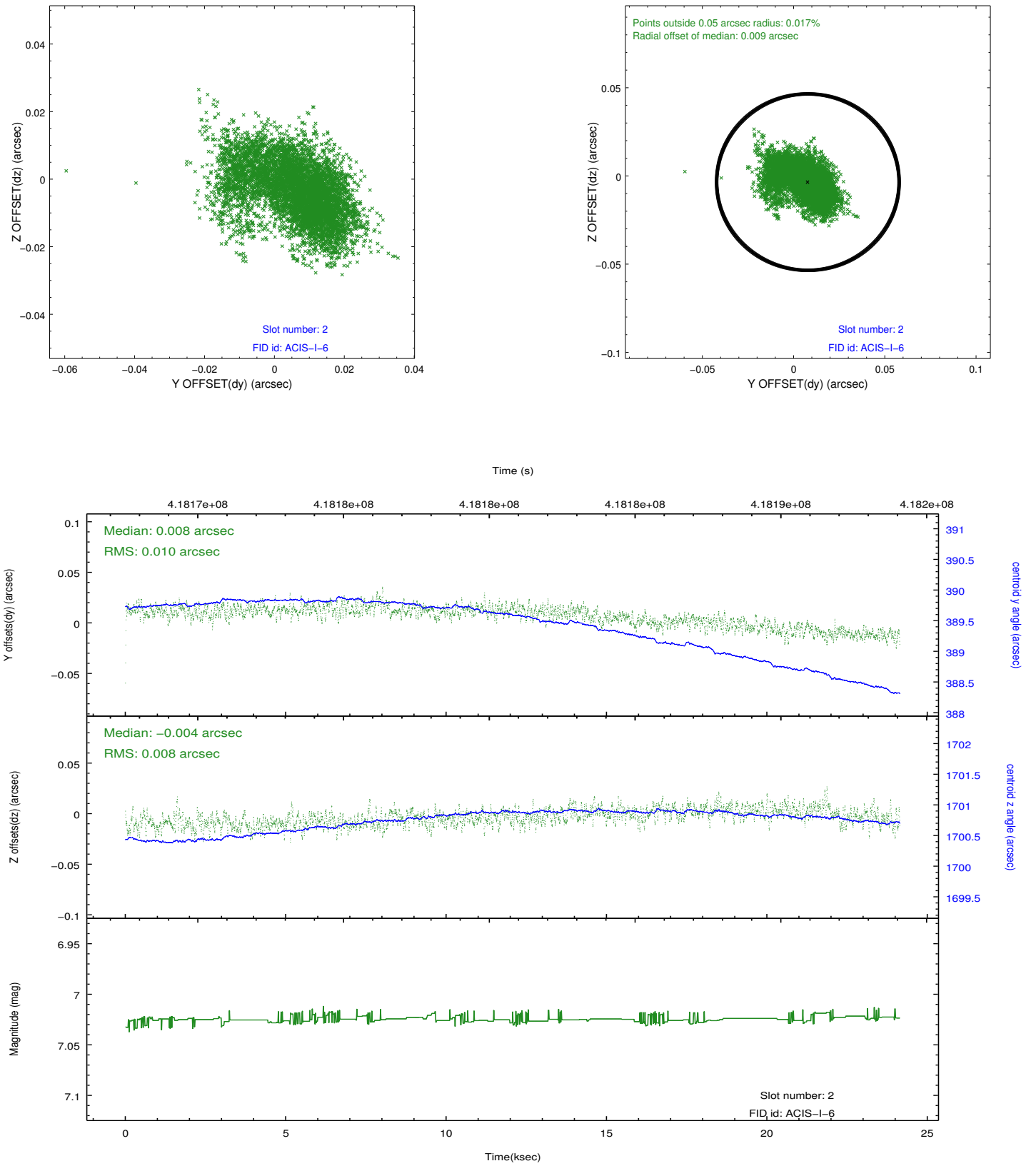
2.5.1 Slot 0



2.5.2 Slot 1



2.5.3 Slot 2



A Summary

A.1 Status

V&V Scientist	Jen Lauer
V&V Date (YYYY-MM-DD)	2012.02.09
V&V Edition	1
V&V Disposition and Status	OK
V&V Charge Time	24.054370896399

A.2 Comments

The data for this observation have been processed using the 'EDSER' sub-pixel event-repositioning algorithm of Li et al. (2004, ApJ, 610, 1204). Small-scale features should become sharper for sources near the aim point. The improvement will be less noticeable for off-axis sources where the size of the point-spread function is comparable to or larger than the size of an ACIS pixel. To take full advantage of the improvement, images should be binned on spatial scales smaller than the size of an ACIS pixel. Note that, at present, the point-spread function has not been calibrated for data to which the EDSER algorithm has been applied. If dither was disabled for the observation, then the algorithm can introduce artificial aliasing effects on spatial scales smaller than a pixel. If you would prefer to use no sub-pixel adjustment or to apply a coordinate randomization, then use `acis_process_events` to reprocess the data with the parameter `pix_adj=NONE` or `RANDOMIZE`, respectively.

=====

Roll preference met.