

V&V Reference Report

L2 ASCDS Version : 8.4.3

Observation 12307 - L2 Version 2
Chandra X-Ray Center

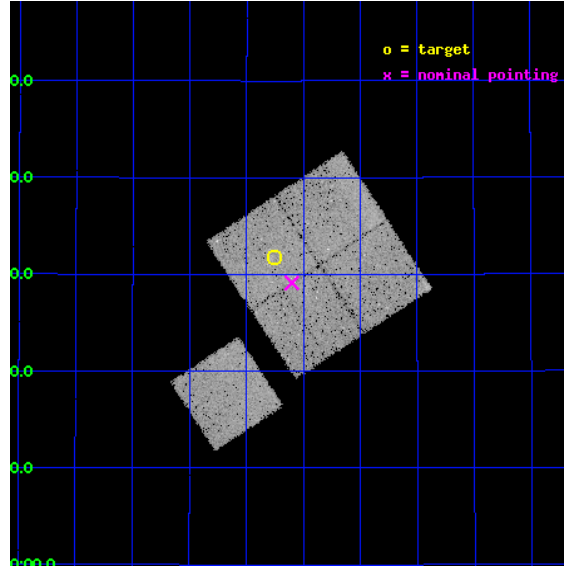
L2 Processing Date : Feb 13 2012

Contents

1	Front	2
2	OBI	3
2.1	OBI	3
2.1.1	Images	3
2.1.2	Bias	3
2.1.3	Parameters	4
2.1.4	Events	4
2.2	Compared Parameters	5
2.3	Aspect	6
2.4	Star Slots	9
2.4.1	Slot 3	9
2.4.2	Slot 4	10
2.4.3	Slot 5	11
2.4.4	Slot 6	12
2.4.5	Slot 7	13
2.5	FID Slots	14
2.5.1	Slot 0	14
2.5.2	Slot 1	15
2.5.3	Slot 2	16
A	Summary	17
A.1	Status	17
A.2	Comments	17

1 Front

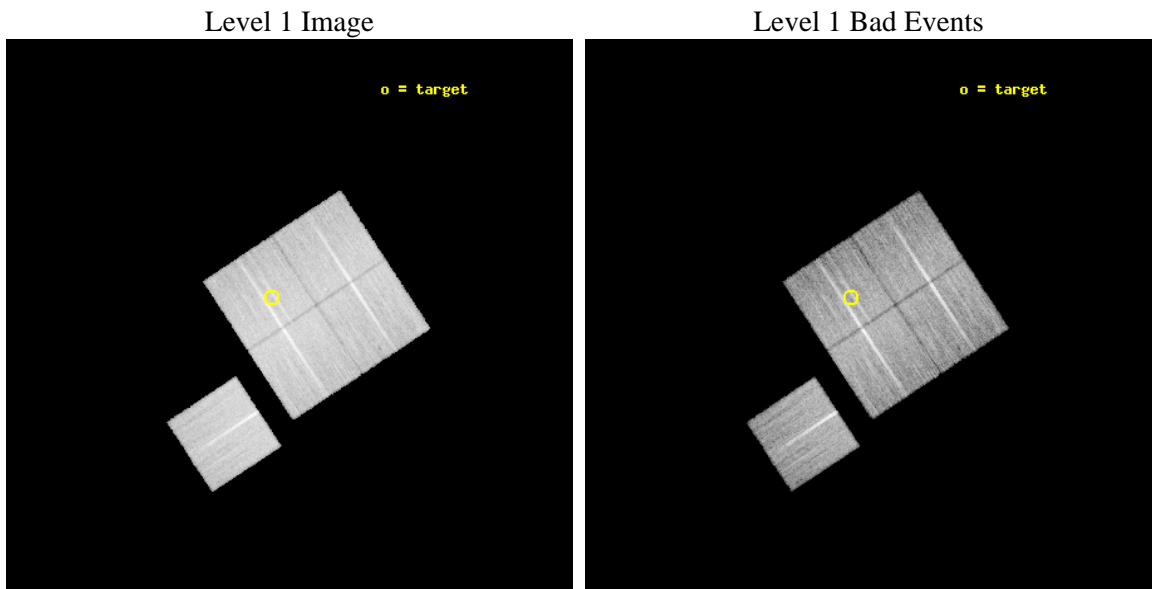
seq_num	801012	Sequence number
obs_id	12307	Observation id
title	The X-ray Properties of Weak-Lensing Selected Galaxy Clusters	Prop
observer	MR Paul Giles	Principal investigator
object	SLJ1335.7+3731	Source name
dtcycle	0	
cycle	P	events from which exps? Prim/Second/Both
ra_targ	203.94	Observer's specified target RA [deg]
dec_targ	37.53	Observer's specified target Dec [deg]
ra_nom	203.90030808393	Nominal RA [deg]
dec_nom	37.485615764727	Nominal Dec [deg]
roll_nom	236.68090160645	Nominal Roll [deg]
revision	2	Processing version of data
ontime	27056.034901679	Sum of GTIs [s]
livetime	26702.527887325	Livetime [s]
ontime0	27059.052762032	Sum of GTIs [s]
ontime1	27059.093802035	Sum of GTIs [s]
ontime2	27055.993841827	Sum of GTIs [s]
ontime3	27056.034901679	Sum of GTIs [s]
ontime6	27052.729711592	Sum of GTIs [s]
l2events	81107	Number of level 2 events



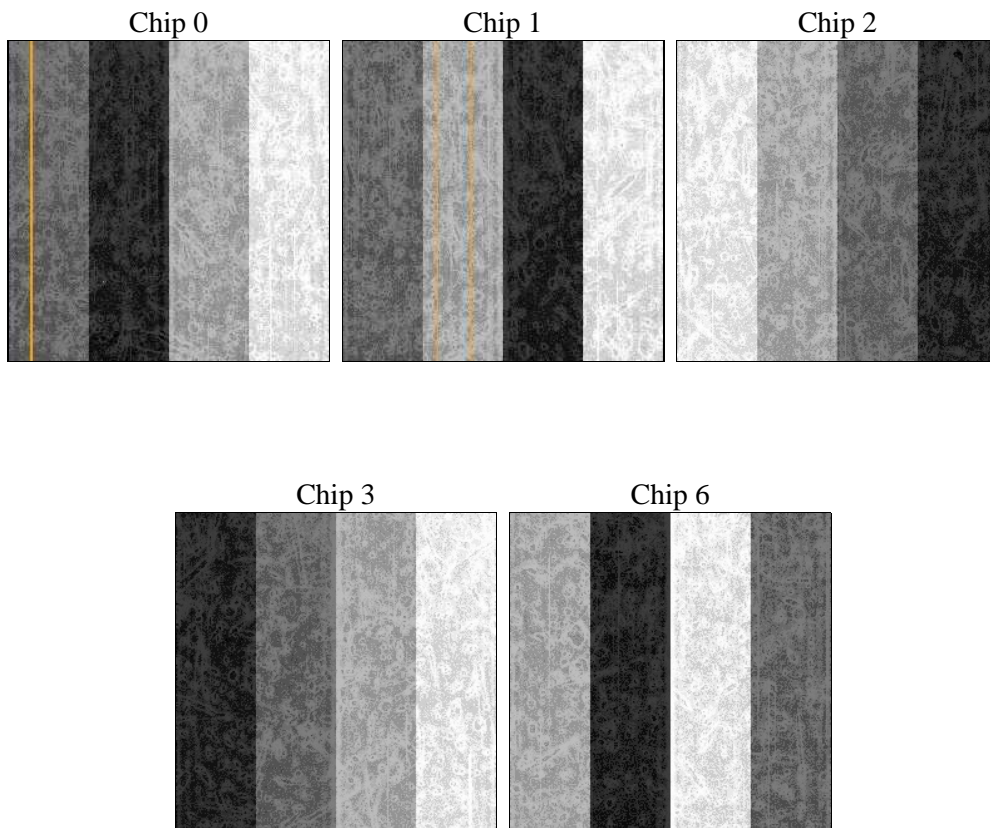
2 OBI

2.1 OBI

2.1.1 Images



2.1.2 Bias



2.1.3 Parameters

obi_num	0	Obi number	sched_exp_time	27000.000000	[s] Scheduled observation exposure time
ascdsver	8.4.3	Processing system revision	ontime	27056.034901679	Sum of GTIs [s]
caldsver	4.4.7	 	ontime0	27059.052762032	Sum of GTIs [s]
date	2012-02-13T11:59:52	Date and time of file creation	ontime1	27059.093802035	Sum of GTIs [s]
revision	2	Processing version of data	ontime2	27055.993841827	Sum of GTIs [s]
			ontime3	27056.034901679	Sum of GTIs [s]
			ontime6	27052.729711592	Sum of GTIs [s]
			l1events	798142	Number of level 1 events

2.1.4 Events

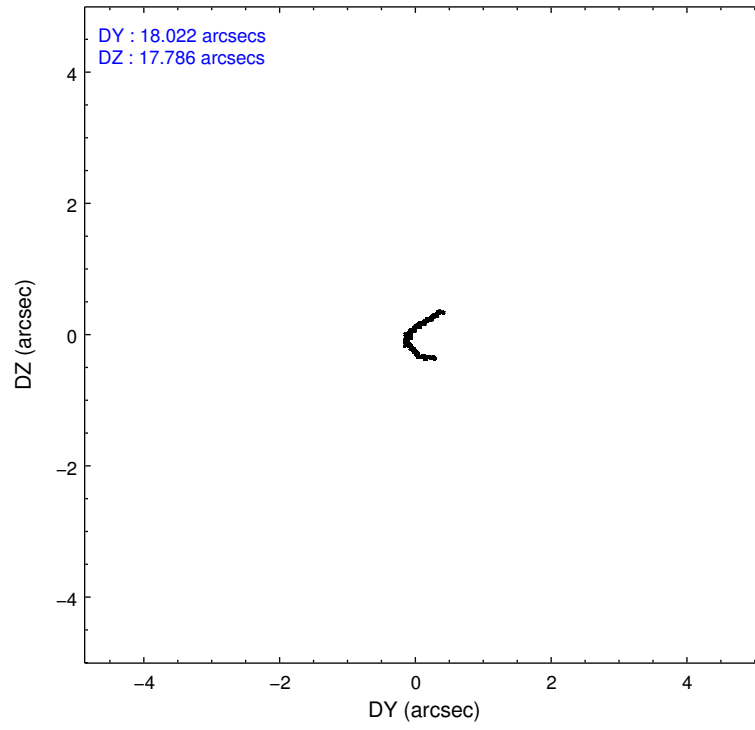
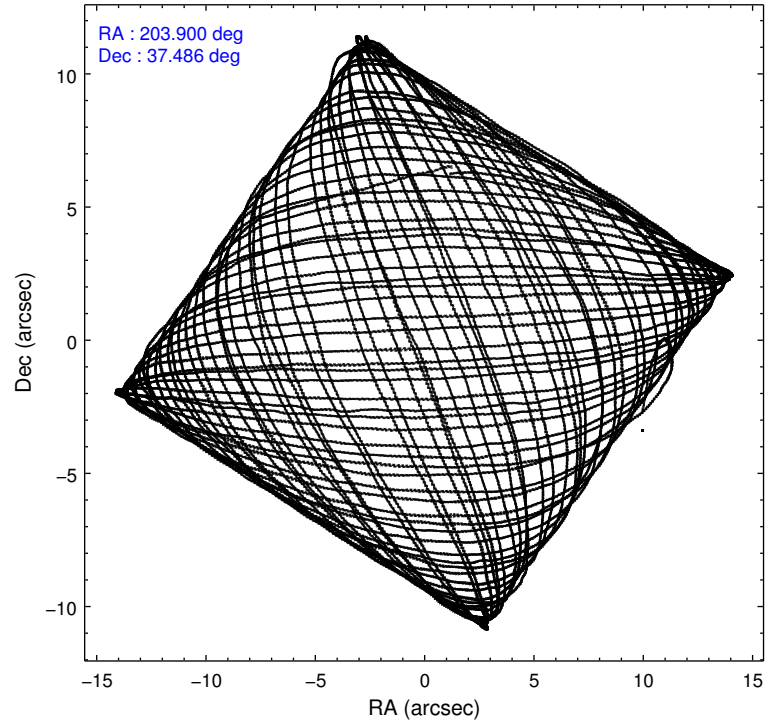
	ccd 0	ccd 1	ccd 2	ccd 3	ccd 6
level 1 events	152223	151621	170040	159109	165149
rejected events	133102	130399	151189	140905	145901
rejected %	87%	86%	88%	88%	88%

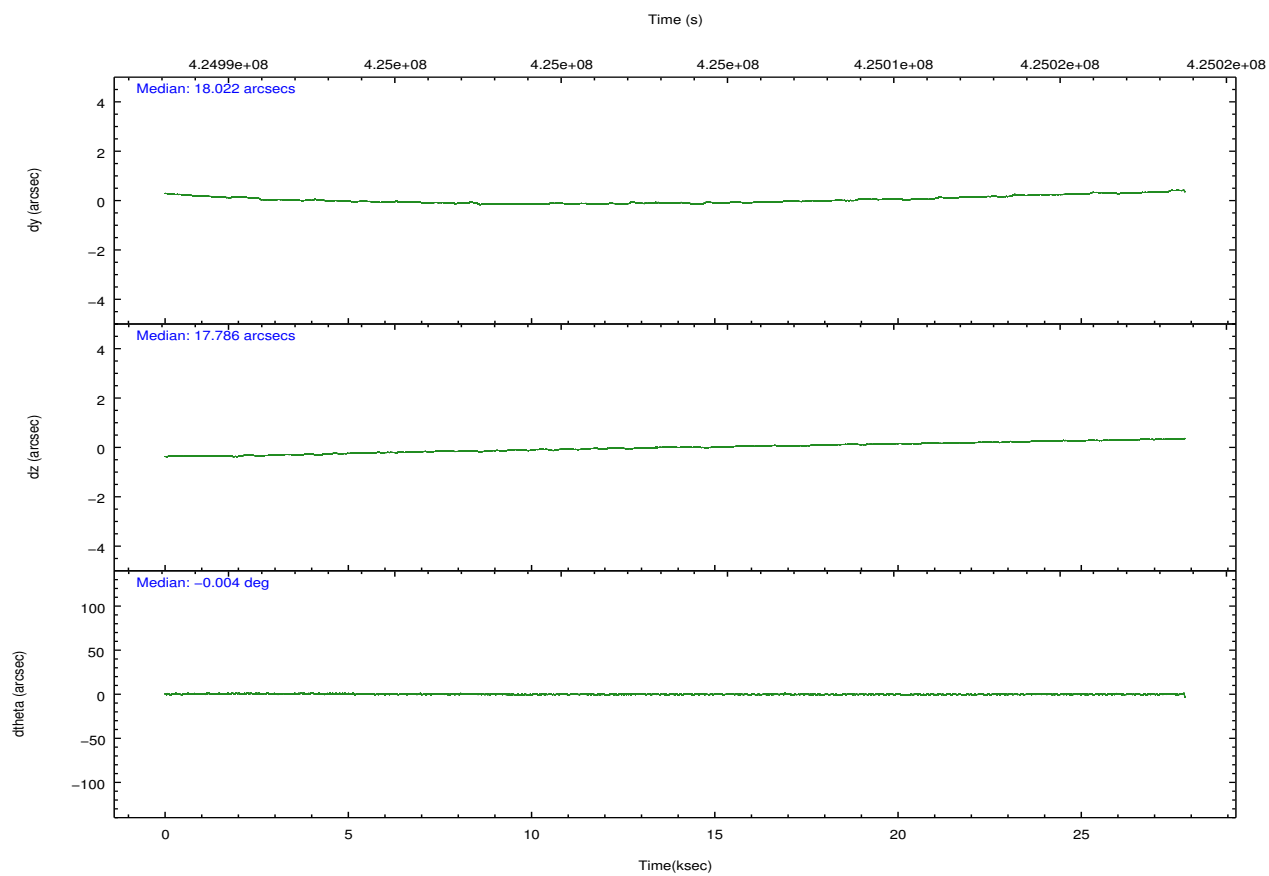
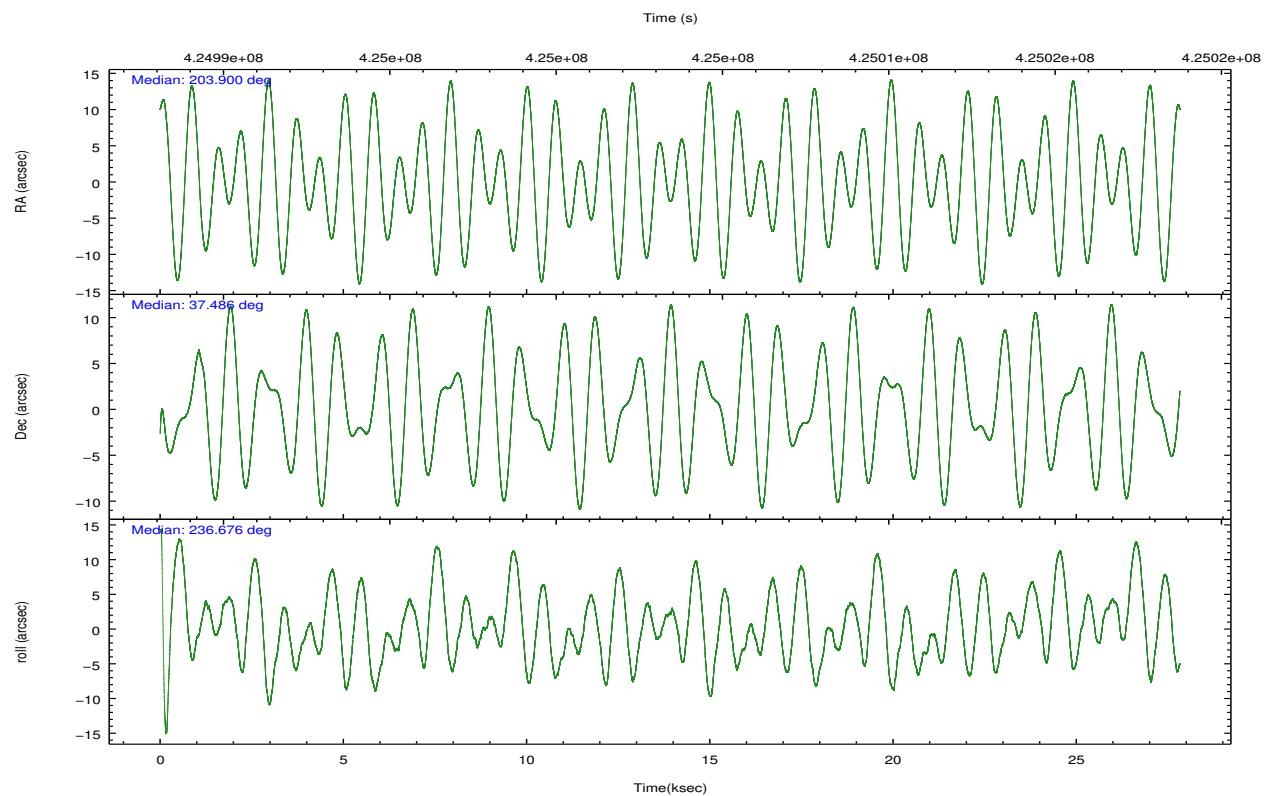
	ccd 0	ccd 1	ccd 2	ccd 3	ccd 6
grade 0 events	7014	7611	6956	6689	6631
	4%	5%	4%	4%	4%
grade 1 events	91	82	110	94	83
	0%	0%	0%	0%	0%
grade 2 events	4549	5034	4515	4022	4441
	2%	3%	2%	2%	2%
grade 3 events	2018	2064	1910	1897	2021
	1%	1%	1%	1%	1%
grade 4 events	1793	2165	1978	1903	1976
	1%	1%	1%	1%	1%
grade 5 events	6909	7637	6515	7887	7686
	4%	5%	3%	4%	4%
grade 6 events	3751	4348	3494	3696	4182
	2%	2%	2%	2%	2%
grade 7 events	126098	122680	144562	132921	138129
	82%	80%	85%	83%	83%

2.2 Compared Parameters

Parameter	Planned	Actual	Parameter	Planned	Actual
Instrument	ACIS	ACIS	Obspar format version number	7	7
Detector	ACIS-01236	ACIS-01236	Obspar file type	PREDICTED	ACTUAL
Grating	NONE	NONE	Obspar update status	NONE	UPDATED
Data mode	VFAINT	VFAINT	Number of optional ACIS chips dropped	0	0
Observation mode	POINTING	POINTING	On-chip summing requested	N	N
[deg] Pointing RA	203.902175	203.9003080839317	Subarray requested	NONE	NONE
[deg] Pointing Dec	37.513094	37.48561576472743	Alternating exposures requested	N	N
[deg] Pointing Roll	236.471068	236.680901606451	[s] Primary exposure time	0.000000	3.1
[mm] SIM focus pos	-0.782348	-0.7809083437167272			
[mm] SIM defocus	0	0.001439871863259334			
[mm] SIM translation stage pos	-225.792463	-225.7829997647864			
[mm] SIM translation stage offset	-7.8	-7.809453238143249			
[s] Observation start time (MET)	424990333.184000	424988690.1128			
Observation start date	2011-06-20T20:51:07	2011-06-20T20:24:50			
[s] Observation end time (MET)	425017333.184000	425018268.53934			
Observation end date	2011-06-21T04:21:07	2011-06-21T04:37:48			
Read mode	TIMED	TIMED			

2.3 Aspect



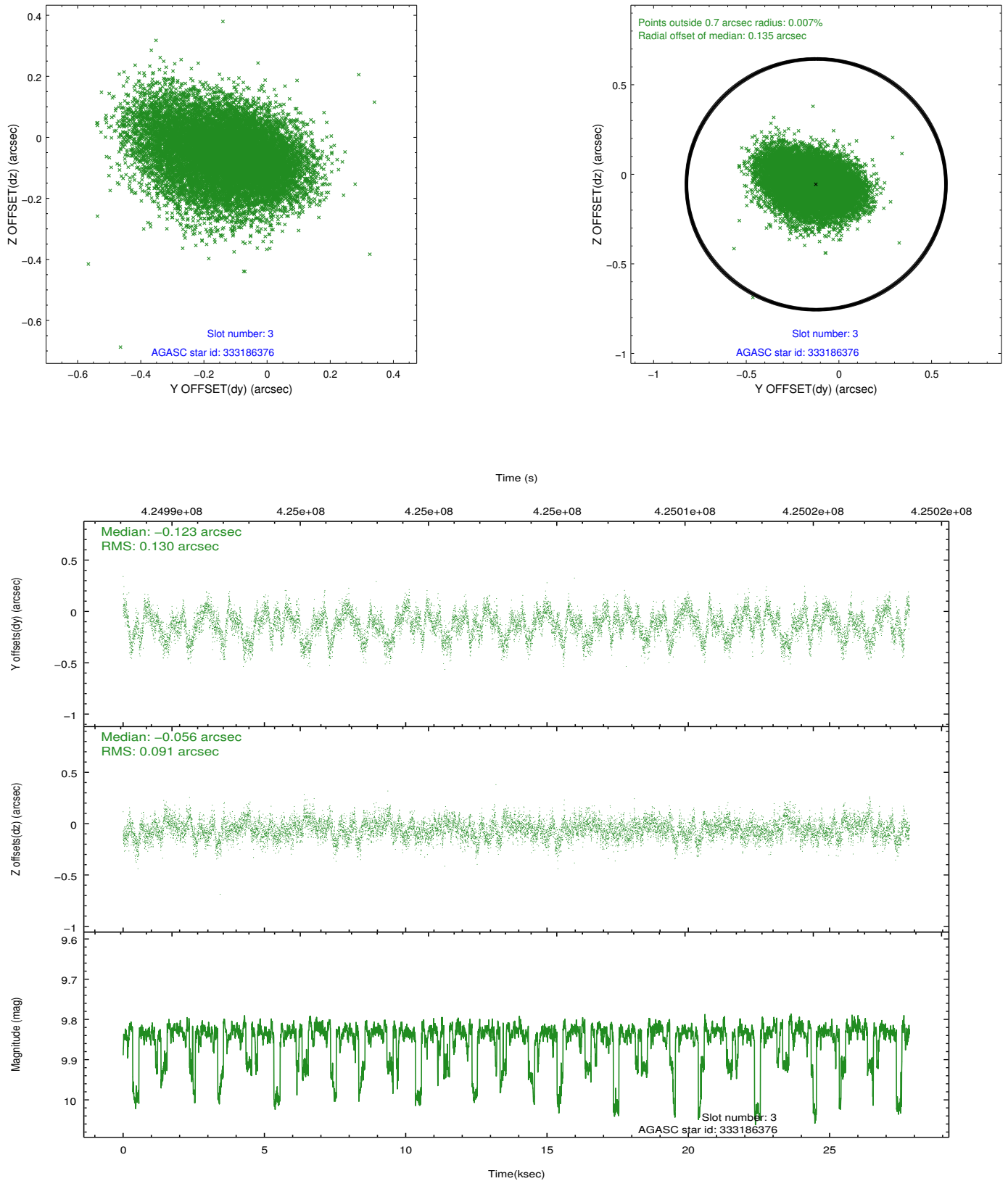


Slot Statistics

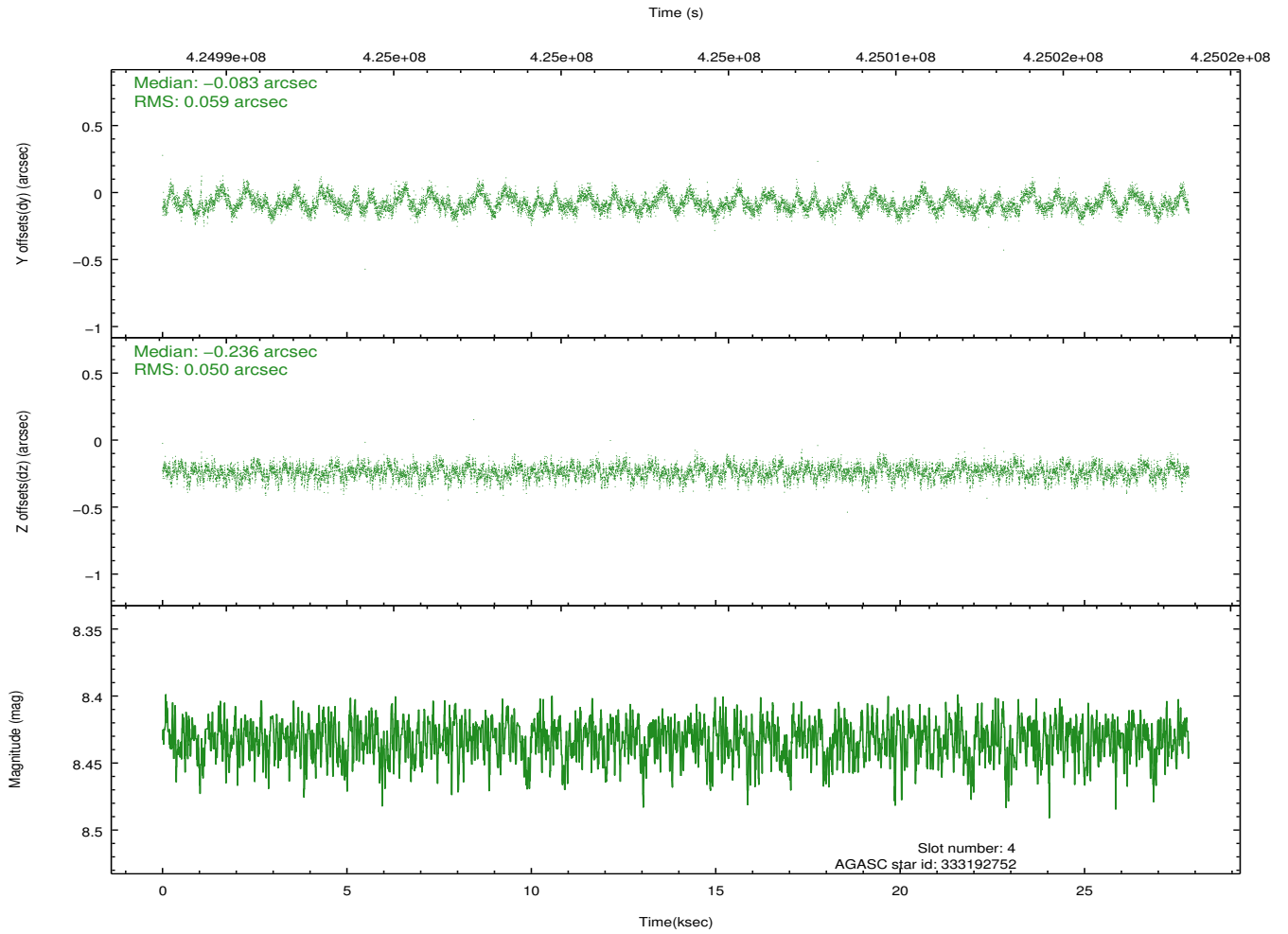
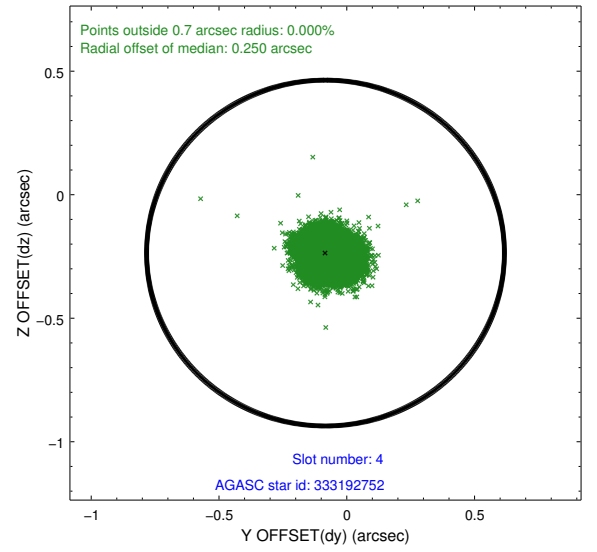
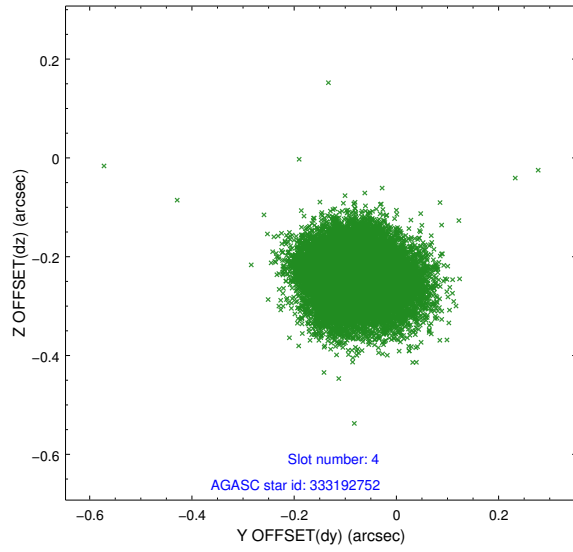
slot	status	id	mag	n_pts	med_dy	med_dz	dr1	dr2	ra	dec	mean_y	mean_z
0	FID	ACIS-I-1	7.02	6787	0.127	-0.095	0.007	0.014	0.000000	0.000000	921.33	-1001.83
1	FID	ACIS-I-5	7.01	6787	-0.301	0.098	0.009	0.017	0.000000	0.000000	-1827.22	895.69
2	FID	ACIS-I-6	7.03	6786	0.083	0.068	0.009	0.016	0.000000	0.000000	386.64	1540.35
3	GUIDE	333186376	9.84	13494	-0.123	-0.056	0.170	0.278	203.969460	37.068918	1226.20	1044.56
4	GUIDE	333192752	8.43	13572	-0.083	-0.236	0.084	0.130	203.839277	37.405848	421.42	63.34
5	GUIDE	396628240	9.35	13562	0.041	0.055	0.112	0.179	203.780849	38.306087	-2190.18	-1862.71
6	GUIDE	396631480	8.04	13573	-0.165	0.078	0.072	0.115	203.891262	37.702710	-551.89	-402.88
7	GUIDE	333190472	9.28	13547	0.330	0.160	0.123	0.190	203.664903	37.181947	1369.51	91.13

2.4 Star Slots

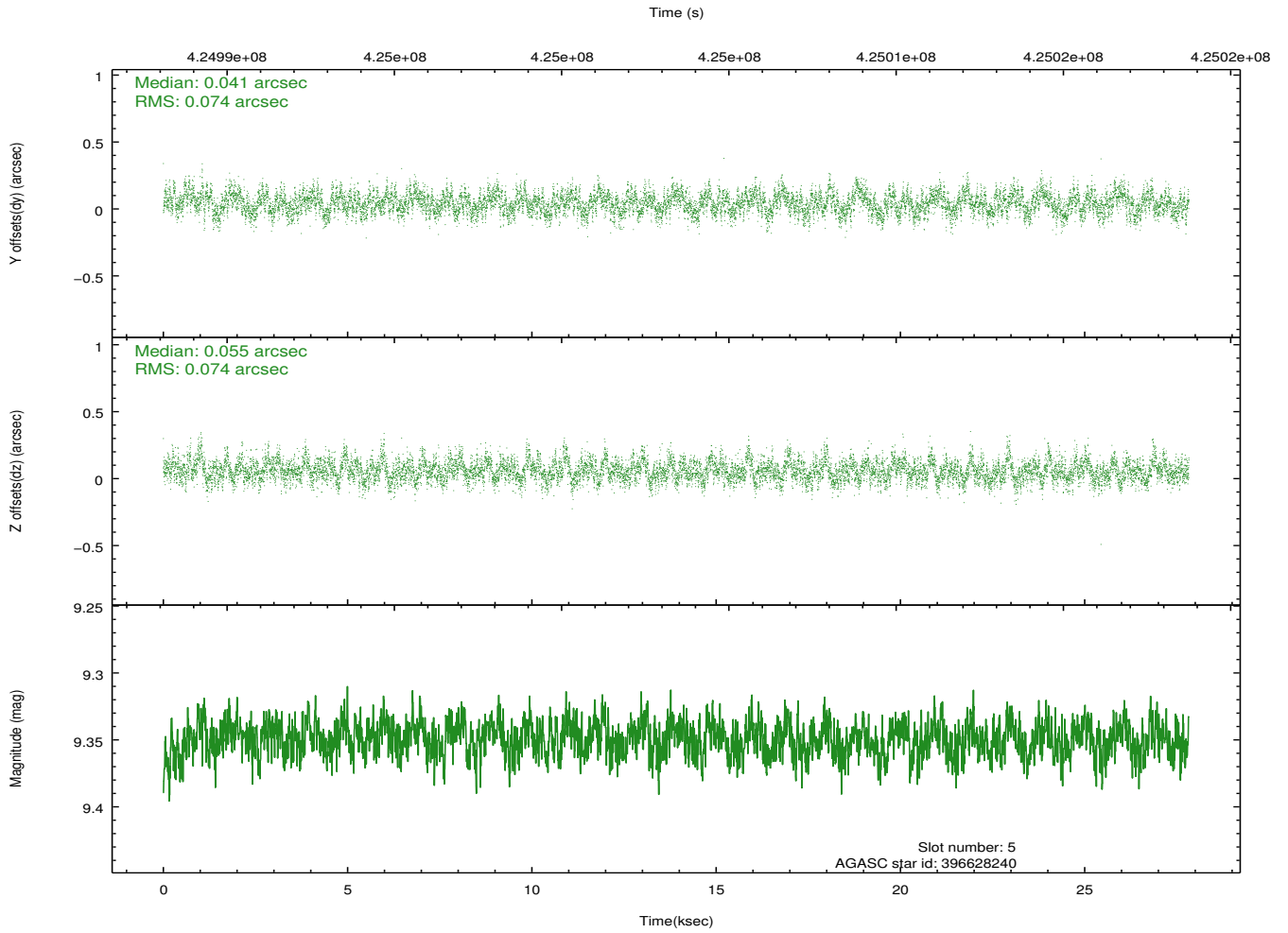
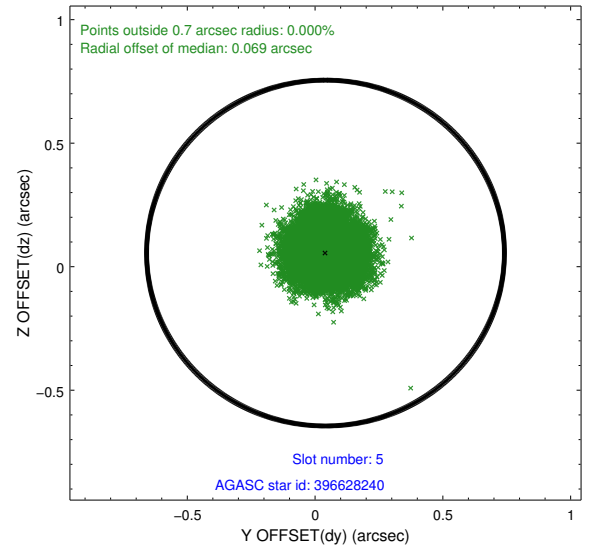
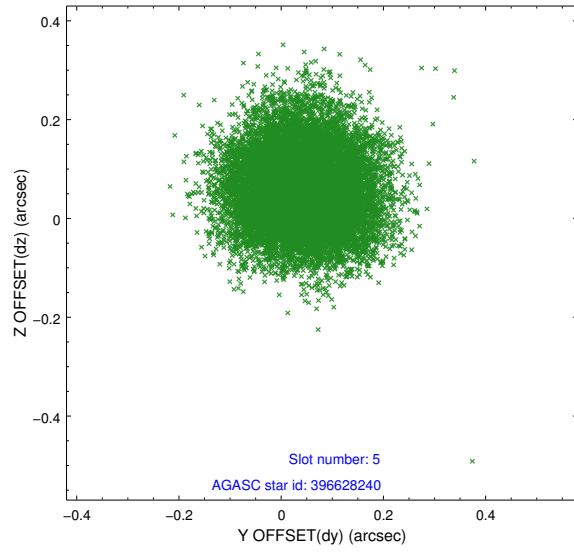
2.4.1 Slot 3



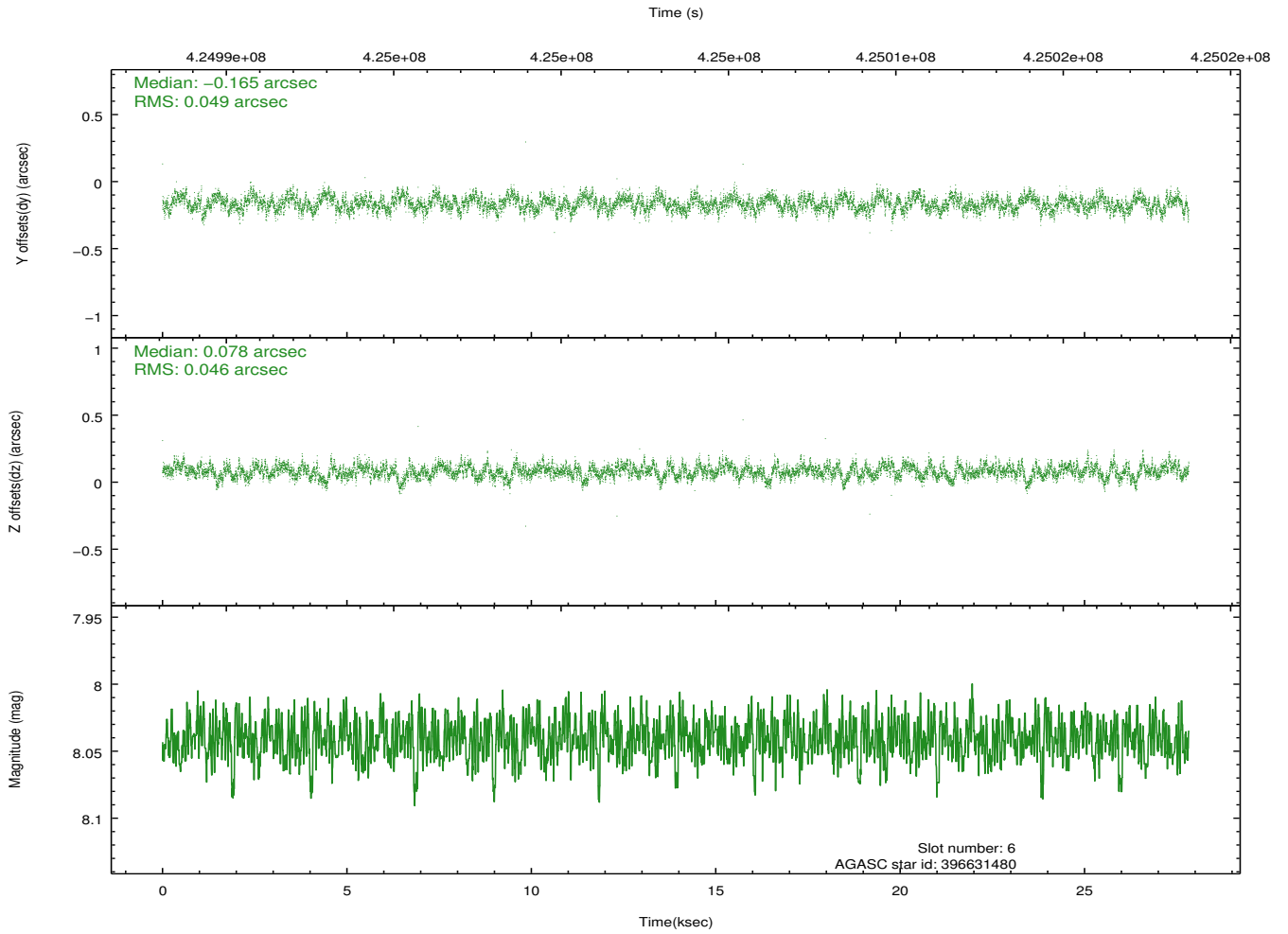
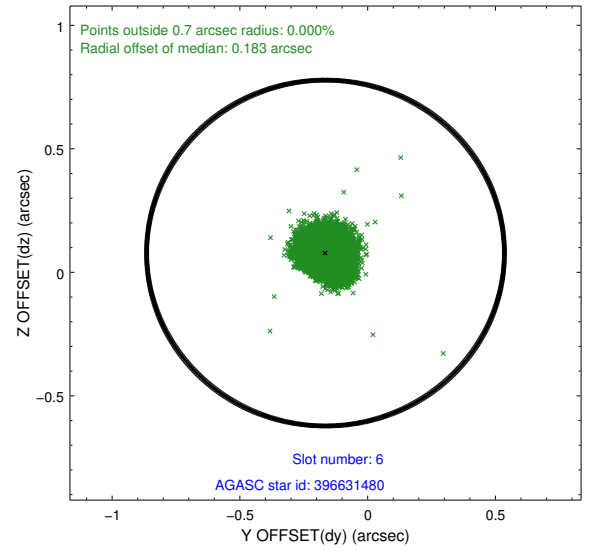
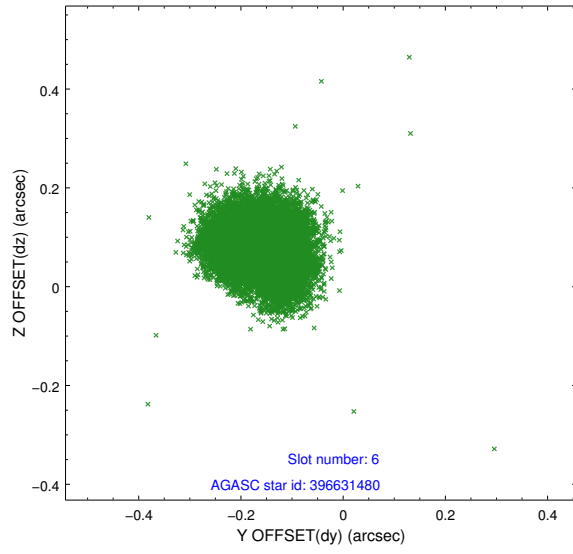
2.4.2 Slot 4



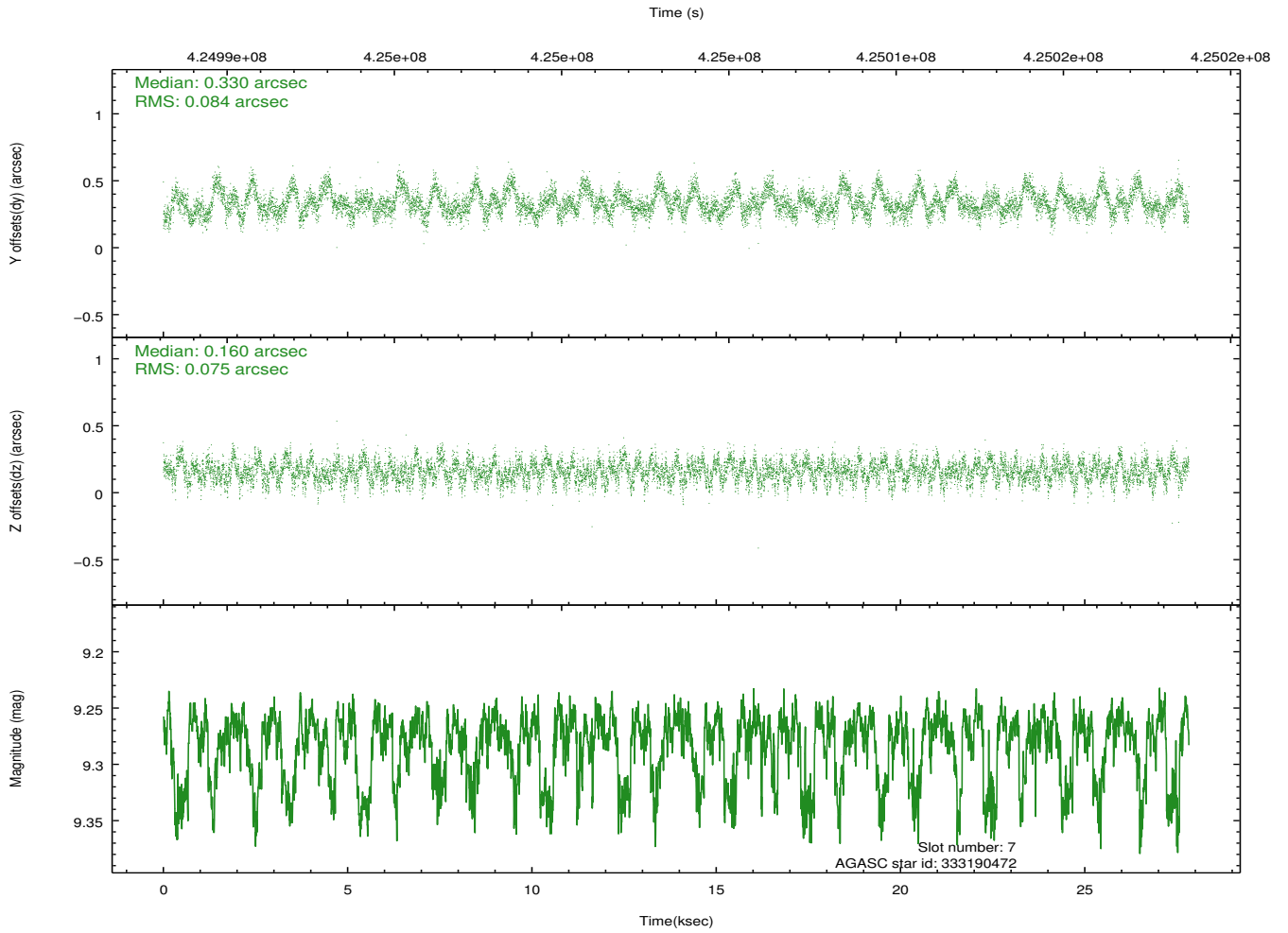
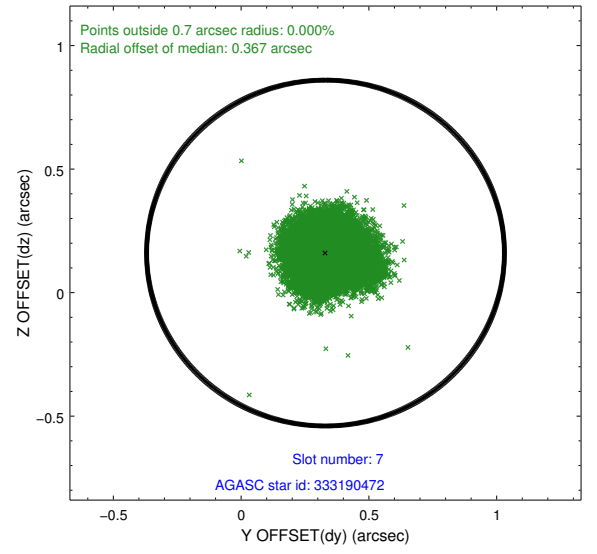
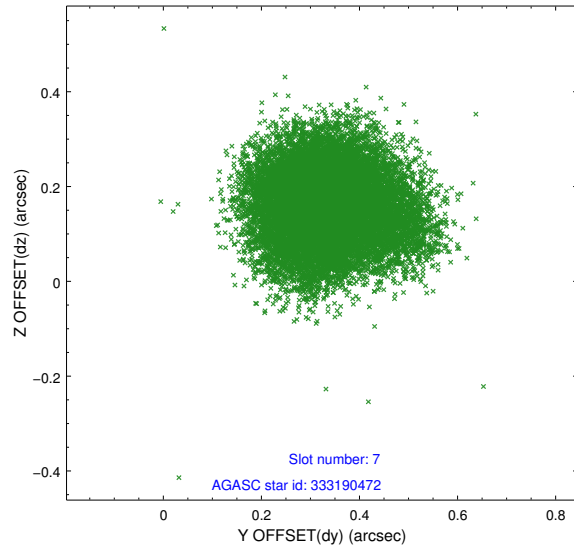
2.4.3 Slot 5



2.4.4 Slot 6

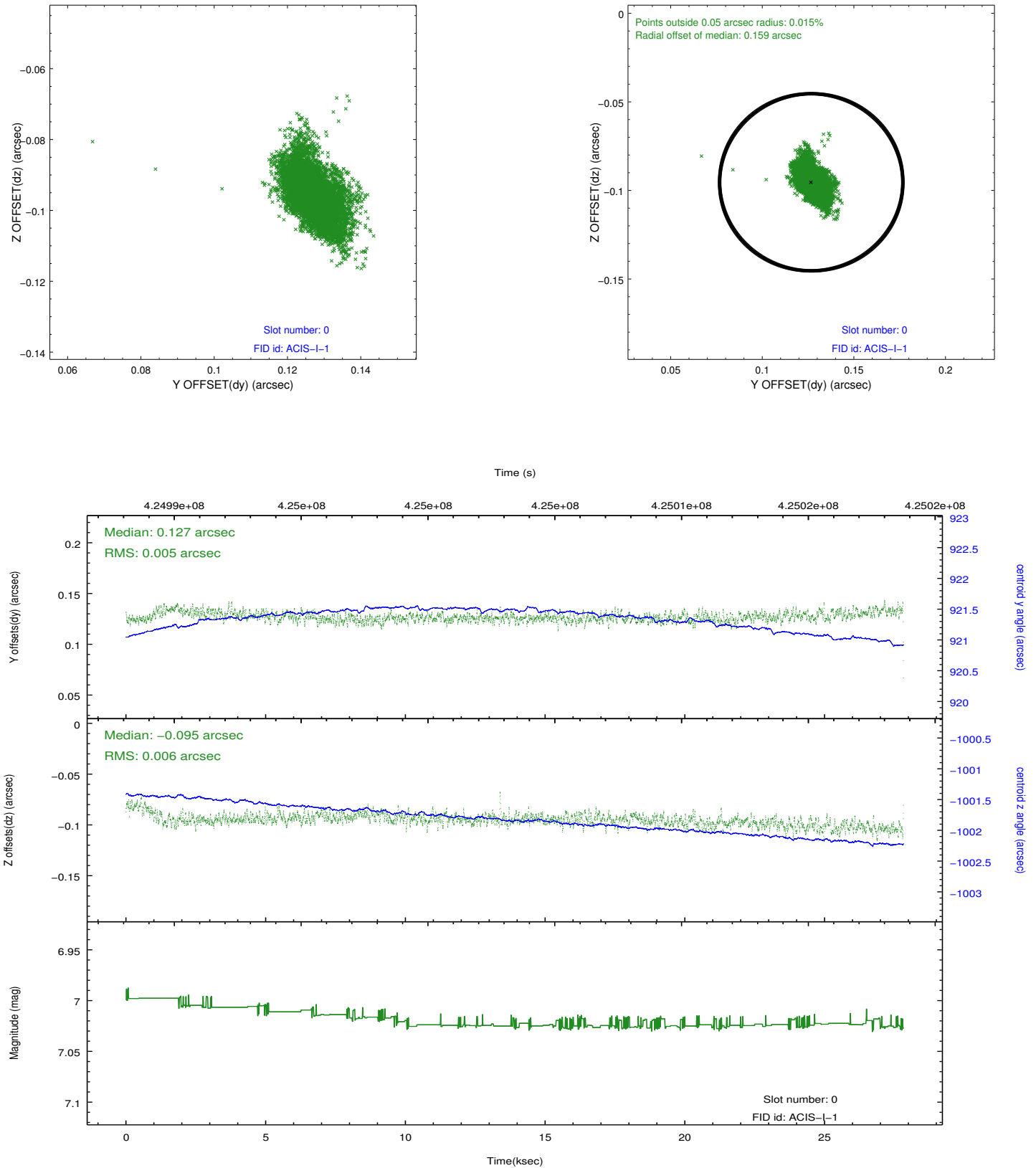


2.4.5 Slot 7

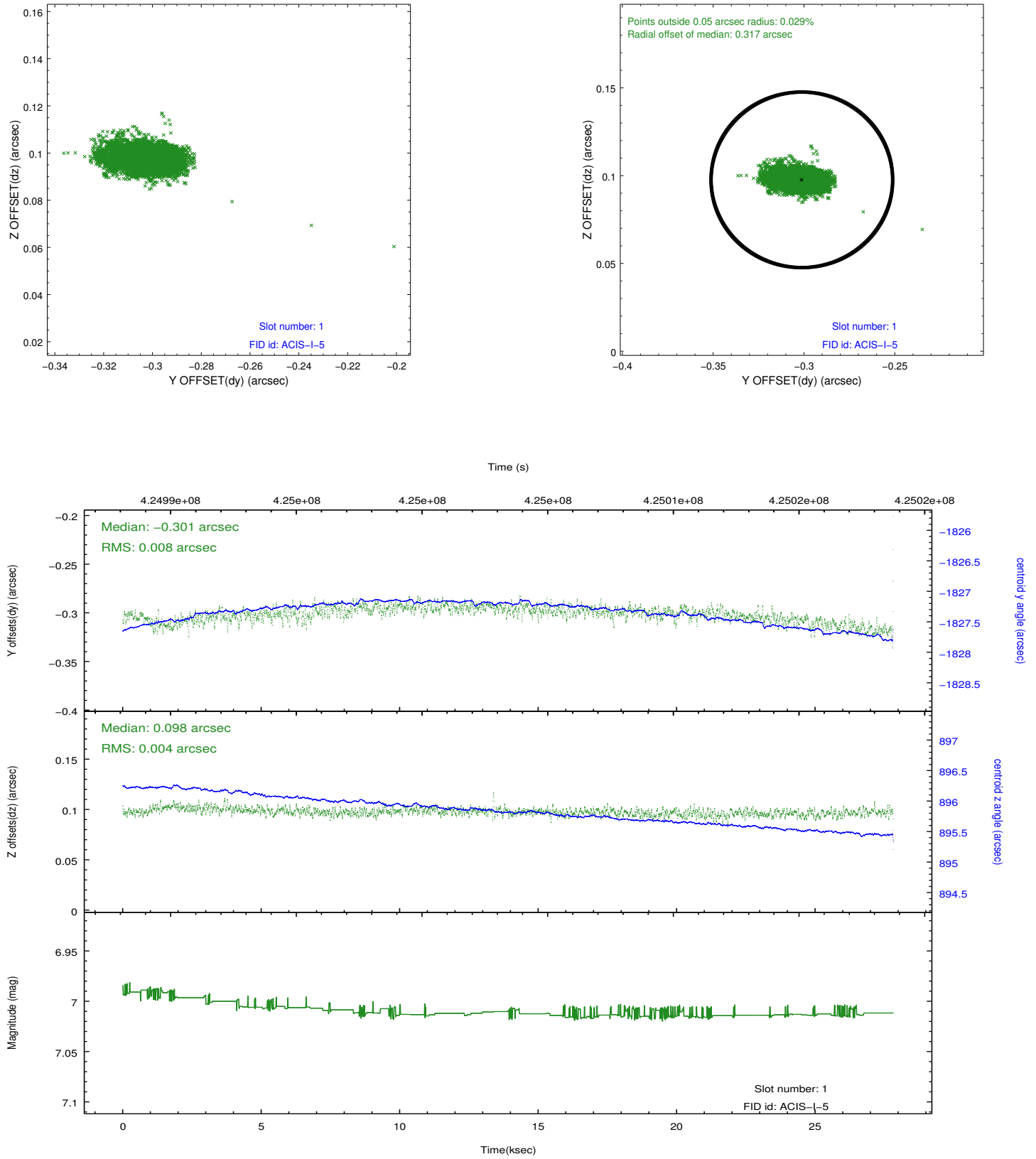


2.5 FID Slots

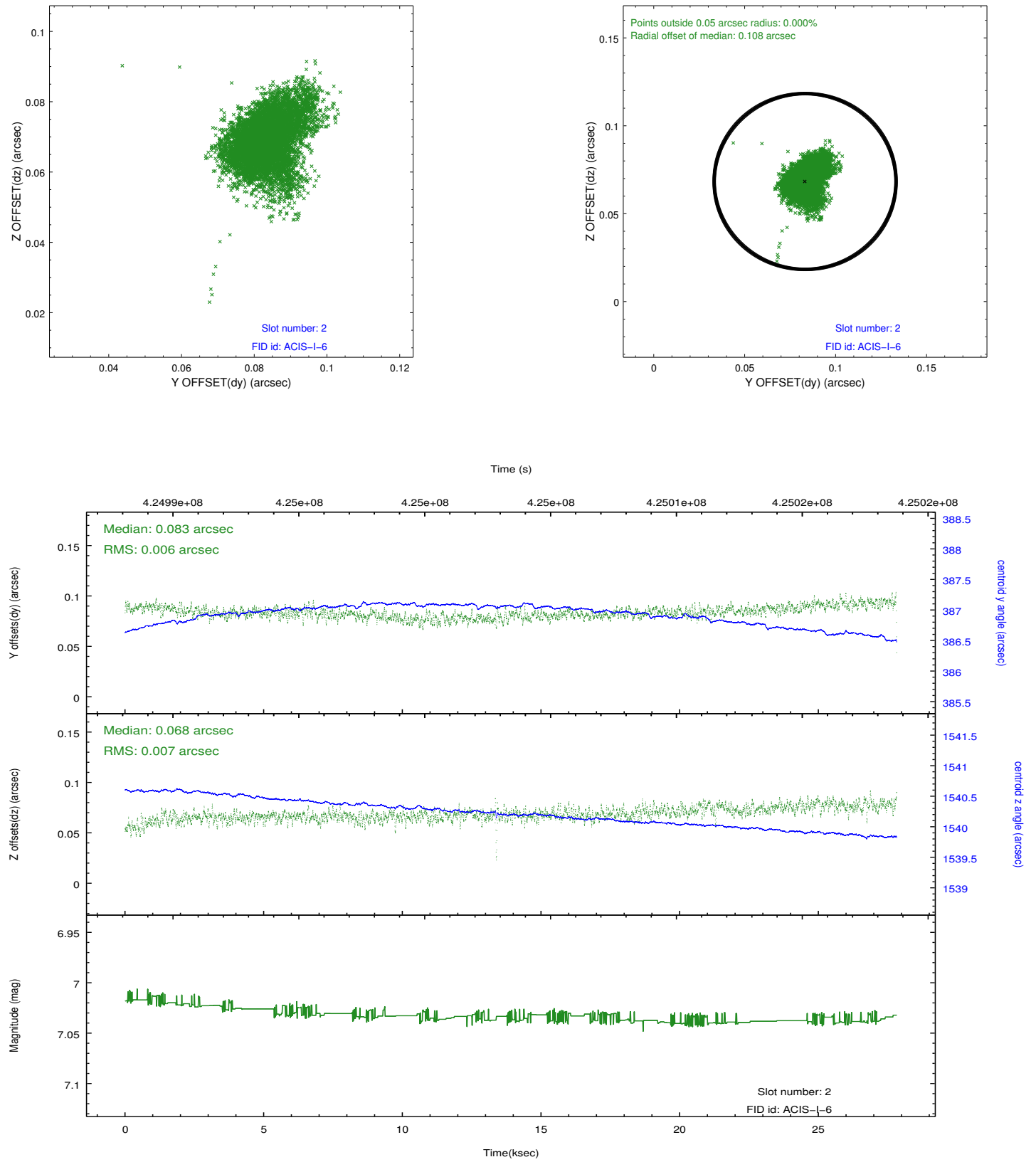
2.5.1 Slot 0



2.5.2 Slot 1



2.5.3 Slot 2



A Summary

A.1 Status

V&V Scientist	Jen Lauer
V&V Date (YYYY-MM-DD)	2012.02.14
V&V Edition	1
V&V Disposition and Status	OK
V&V Charge Time	27.056034894645

A.2 Comments