

# V&V Reference Report

## L2 ASCDS Version : 8.4.3

Observation 12268 - L2 Version 2  
Chandra X-Ray Center

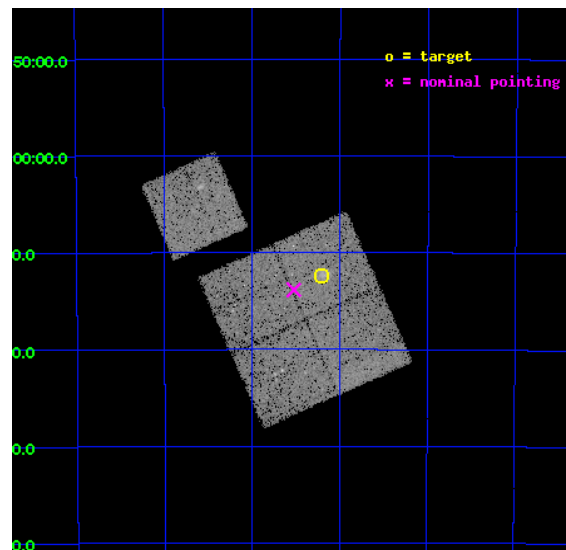
L2 Processing Date : Feb 27 2012

## Contents

<b>1</b>	<b>Front</b>	<b>2</b>
<b>2</b>	<b>OBI</b>	<b>3</b>
2.1	OBI . . . . .	3
2.1.1	Images . . . . .	3
2.1.2	Bias . . . . .	3
2.1.3	Parameters . . . . .	4
2.1.4	Events . . . . .	4
2.2	Compared Parameters . . . . .	5
2.3	Aspect . . . . .	6
2.4	Star Slots . . . . .	9
2.4.1	Slot 3 . . . . .	9
2.4.2	Slot 4 . . . . .	10
2.4.3	Slot 5 . . . . .	11
2.4.4	Slot 6 . . . . .	12
2.4.5	Slot 7 . . . . .	13
2.5	FID Slots . . . . .	14
2.5.1	Slot 0 . . . . .	14
2.5.2	Slot 1 . . . . .	15
2.5.3	Slot 2 . . . . .	16
<b>A</b>	<b>Summary</b>	<b>17</b>
A.1	Status . . . . .	17
A.2	Comments . . . . .	17

# 1 Front

seq_num	800987	Sequence number
obs_id	12268	Observation id
title	Chandra Observations of the ACT Sample of SZE-Selected Galaxy Clusters	Proposal title
observer	Prof John Hughes	Principal investigator
object	ACT J0215-5212	Source name
dtcycle	0	&#160
cycle	P	events from which exps? Prim/Second/Both
ra_targ	33.80125	Observer's specified target RA [deg]
dec_targ	-52.207028	Observer's specified target Dec [deg]
ra_nom	33.881048184137	Nominal RA [deg]
dec_nom	-52.230875655258	Nominal Dec [deg]
roll_nom	336.05963646548	Nominal Roll [deg]
revision	2	Processing version of data
ontime	21056.824604988	Sum of GTIs [s]
livetime	20781.701689715	Livetime [s]
ontime0	21059.842495382	Sum of GTIs [s]
ontime1	21059.883535385	Sum of GTIs [s]
ontime2	21059.924575388	Sum of GTIs [s]
ontime3	21056.824604988	Sum of GTIs [s]
ontime6	21056.660425127	Sum of GTIs [s]
l2events	64314	Number of level 2 events

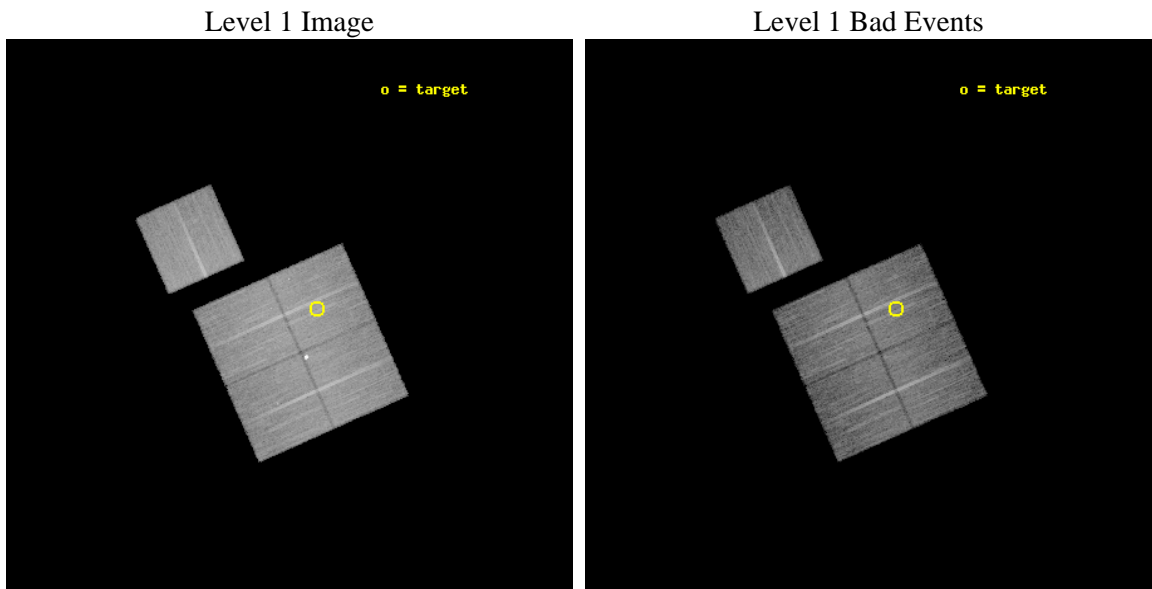




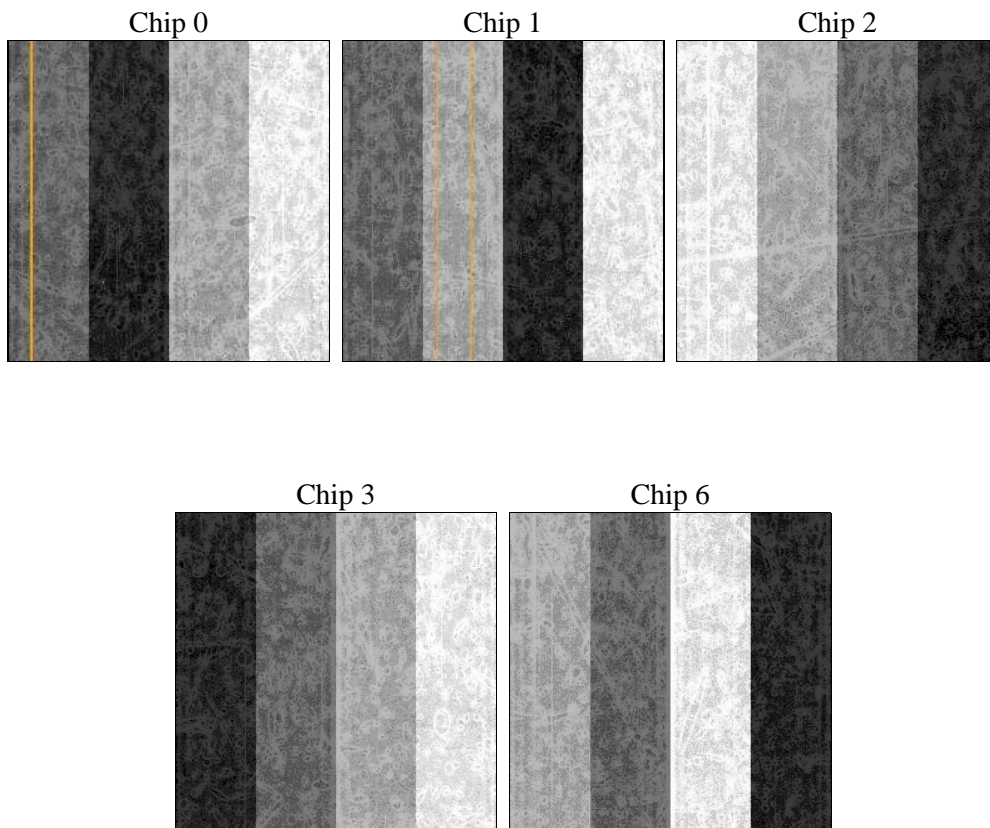
## 2 OBI

### 2.1 OBI

#### 2.1.1 Images



#### 2.1.2 Bias



### 2.1.3 Parameters

obi_num	2	Obi number	sched_exp_time	21000.000000	[s] Scheduled observation exposure time
ascdsver	8.4.3	Processing system revision	ontime	21056.824604988	Sum of GTIs [s]
caldsver	4.4.8	&#160	ontime0	21059.842495382	Sum of GTIs [s]
date	2012-02-27T12:26:55	Date and time of file creation	ontime1	21059.883535385	Sum of GTIs [s]
revision	2	Processing version of data	ontime2	21059.924575388	Sum of GTIs [s]
			ontime3	21056.824604988	Sum of GTIs [s]
			ontime6	21056.660425127	Sum of GTIs [s]
			l1events	633423	Number of level 1 events

### 2.1.4 Events

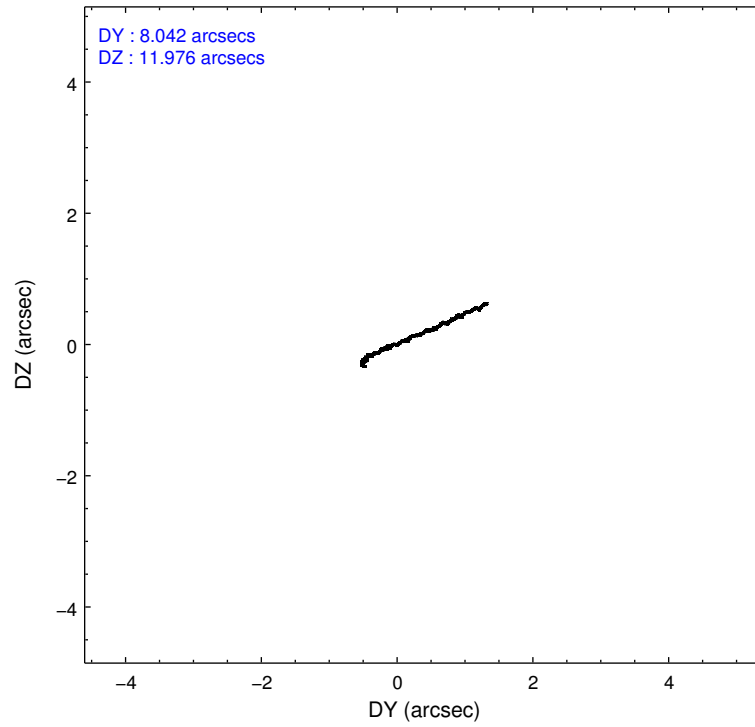
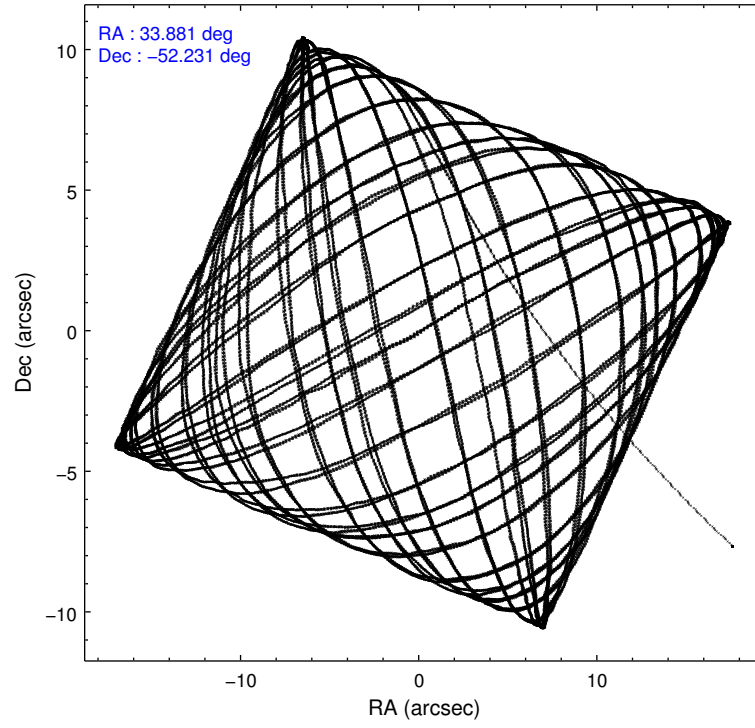
	ccd 0	ccd 1	ccd 2	ccd 3	ccd 6
level 1 events	114845	129574	130237	129382	129385
rejected events	99842	106916	115401	114610	114137
rejected %	86%	82%	88%	88%	88%

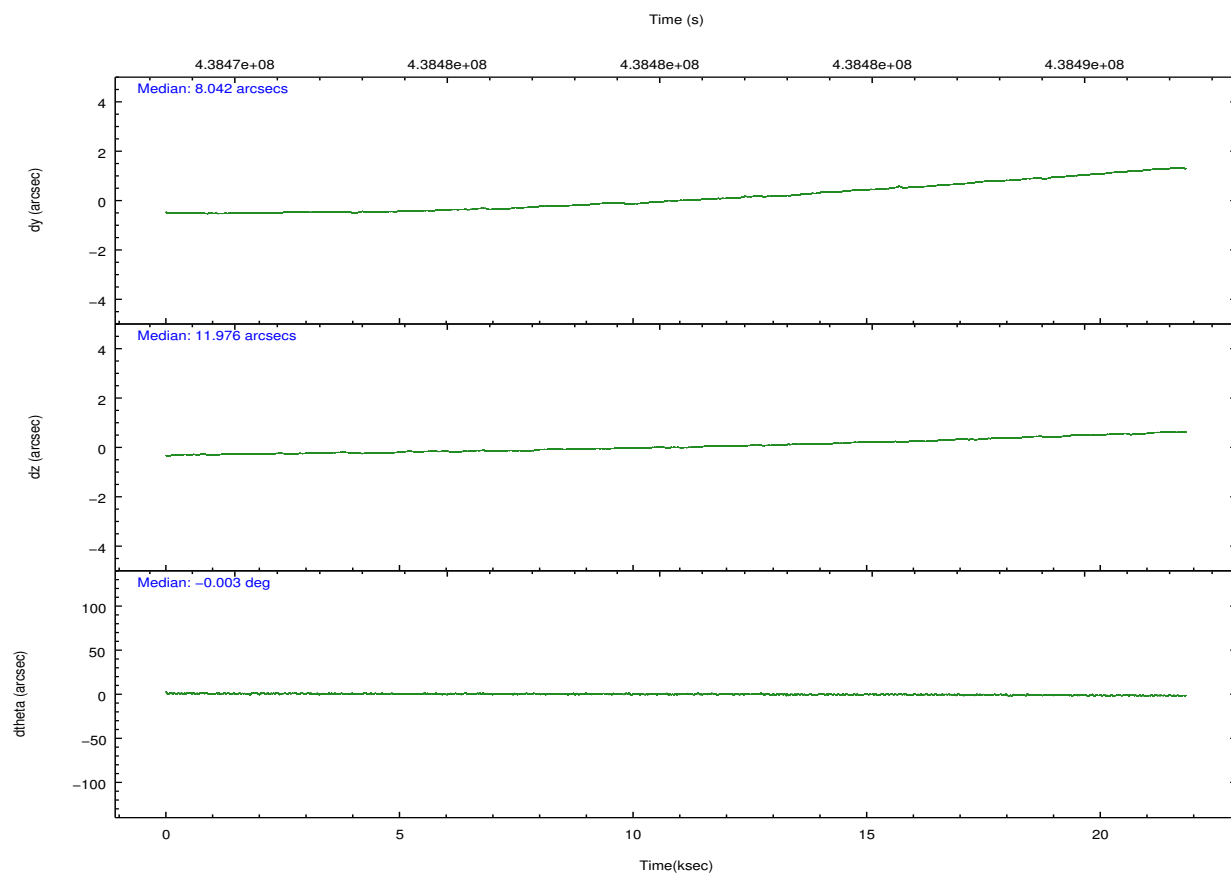
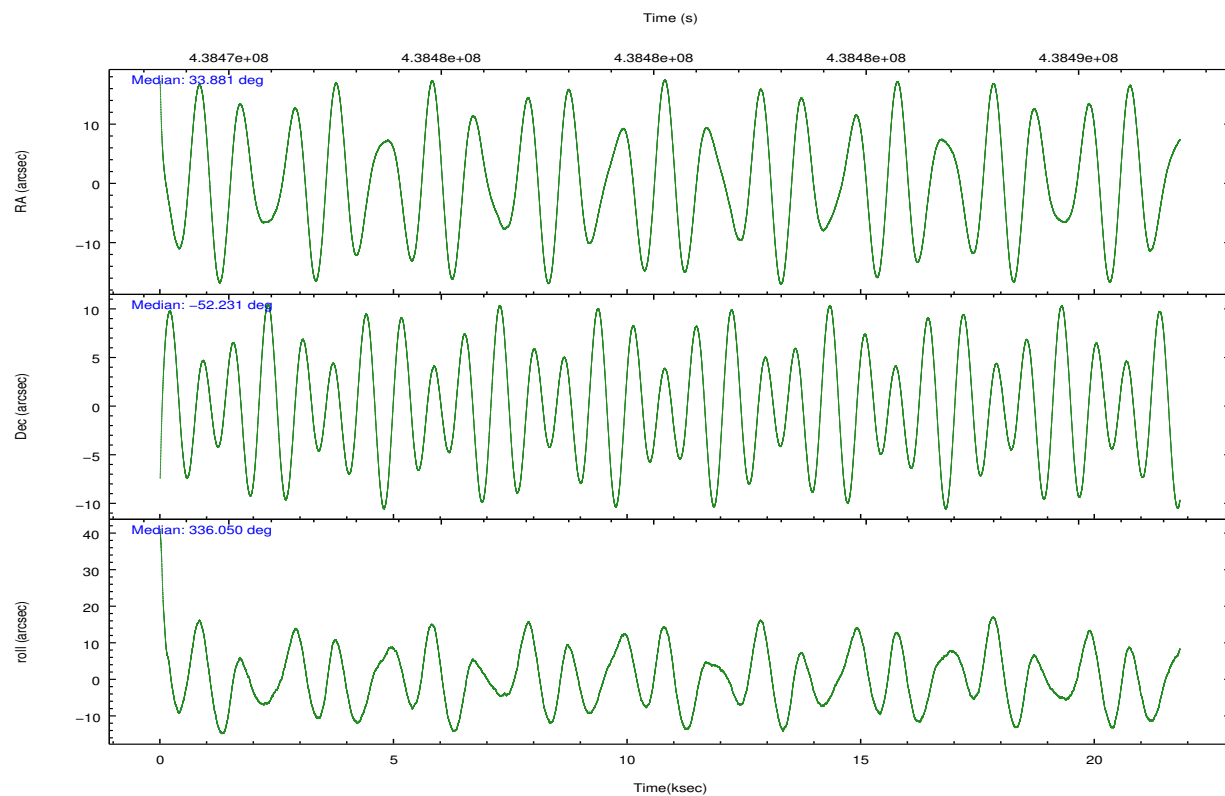
	ccd 0	ccd 1	ccd 2	ccd 3	ccd 6
grade 0 events	5366	11857	5402	5631	5312
	4%	9%	4%	4%	4%
grade 1 events	68	98	80	79	62
	0%	0%	0%	0%	0%
grade 2 events	3588	3955	3574	3176	3339
	3%	3%	2%	2%	2%
grade 3 events	1614	1654	1430	1550	1577
	1%	1%	1%	1%	1%
grade 4 events	1481	1695	1474	1483	1580
	1%	1%	1%	1%	1%
grade 5 events	5861	6060	5582	6205	6140
	5%	4%	4%	4%	4%
grade 6 events	2954	3499	2957	2934	3442
	2%	2%	2%	2%	2%
grade 7 events	93913	100756	109738	108324	107933
	81%	77%	84%	83%	83%

## 2.2 Compared Parameters

Parameter	Planned	Actual	Parameter	Planned	Actual
Instrument	ACIS	ACIS	Obspar format version number	7	7
Detector	ACIS-01236	ACIS-01236	Obspar file type	PREDICTED	ACTUAL
Grating	NONE	NONE	Obspar update status	NONE	UPDATED
Data mode	VFAINT	VFAINT	CCD I0 on	Y	Y
Observation mode	POINTING	POINTING	CCD I1 on	Y	Y
[deg] Pointing RA	33.836426	33.8810481841375	CCD I2 on	Y	Y
[deg] Pointing Dec	-52.233887	-52.23087565525752	CCD I3 on	Y	Y
[deg] Pointing Roll	335.815676	336.0596364654824	CCD S0 on	N	N
[mm] SIM focus pos	-0.782348	-0.7809083437167272	CCD S1 on	N	N
[mm] SIM defocus	0	0.001439871863259334	CCD S2 on	O1	Y
[mm] SIM translation stage pos	-225.792463	-225.7829997647864	CCD S3 on	N	N
[mm] SIM translation stage offset	-7.8	-7.809453238143249	CCD S4 on	N	N
[s] Observation start time (MET)	438470305.184000	438468773.247	CCD S5 on	N	N
Observation start date	2011-11-23T21:17:19	2011-11-23T20:52:53	Number of optional ACIS chips dropped	0	0
[s] Observation end time (MET)	438491305.184000	438492354.91074	On-chip summing requested	N	N
Observation end date	2011-11-24T03:07:19	2011-11-24T03:25:54	Subarray requested	NONE	NONE
Read mode	TIMED	TIMED	Alternating exposures requested	N	N
			[s] Primary exposure time	0.000000	3.1

## 2.3 Aspect



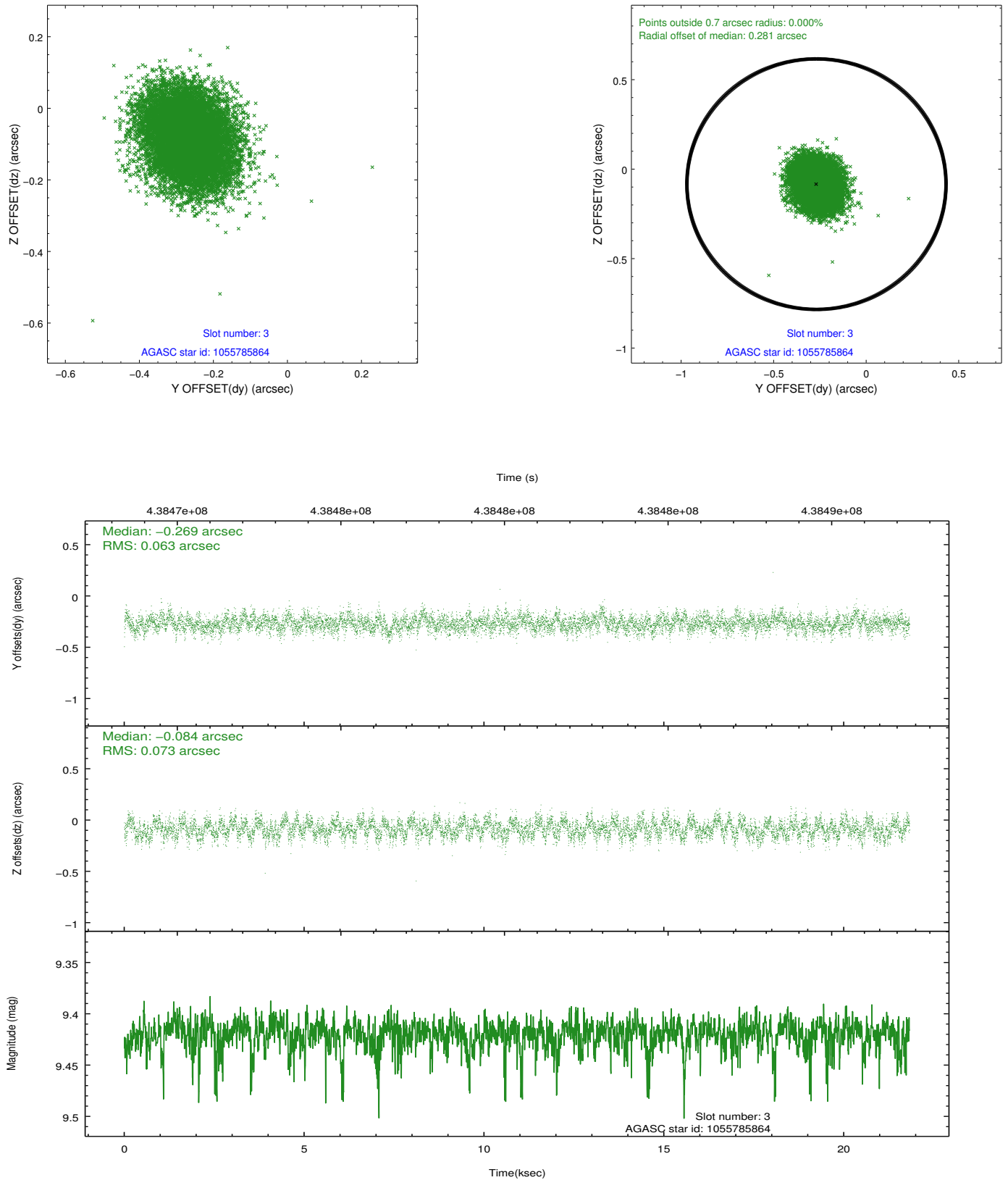


### Slot Statistics

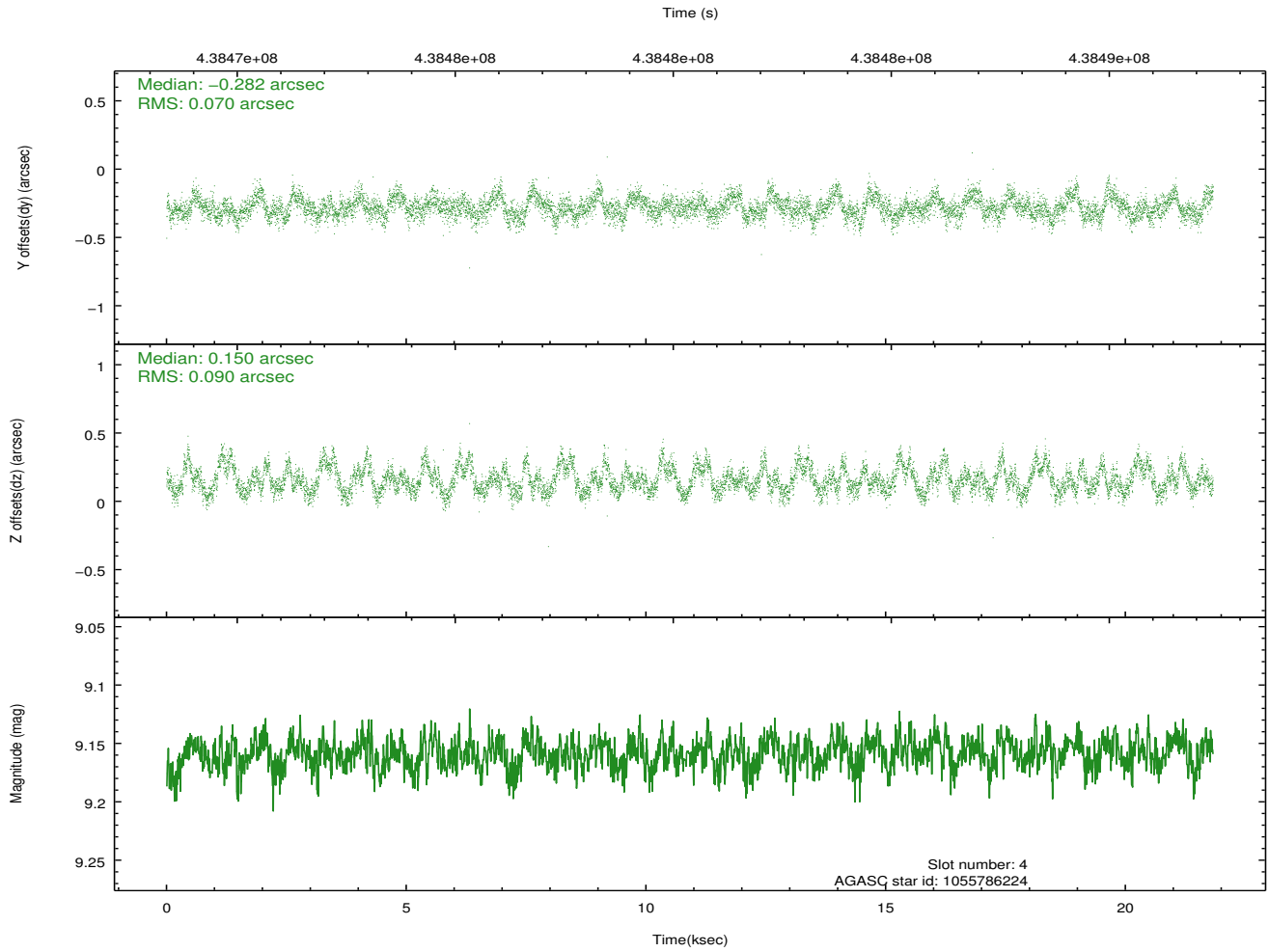
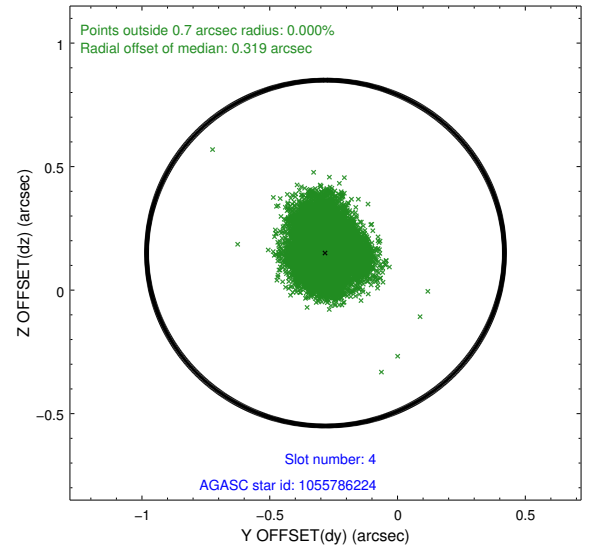
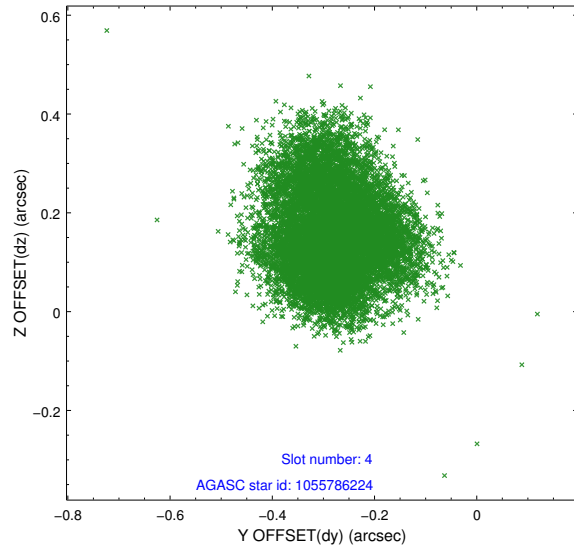
slot	status	id	mag	n_pts	med_dy	med_dz	dr1	dr2	ra	dec	mean_y	mean_z
0	FID	ACIS-I-1	7.08	5324	0.137	-0.115	0.010	0.021	0.000000	0.000000	931.47	-995.98
1	FID	ACIS-I-5	7.08	5324	-0.265	0.115	0.022	0.037	0.000000	0.000000	-1816.97	901.59
2	FID	ACIS-I-6	7.09	5324	0.037	0.070	0.024	0.041	0.000000	0.000000	396.73	1546.26
3	GUIDE	1055785864	9.42	10642	-0.269	-0.084	0.103	0.165	34.126997	-52.022971	276.61	954.74
4	GUIDE	1055786224	9.16	10640	-0.282	0.150	0.122	0.191	33.857438	-52.268103	93.16	-92.61
5	GUIDE	1055786816	10.17	10572	-0.191	-0.135	0.165	0.266	33.767348	-52.466465	205.32	-825.43
6	GUIDE	1055787792	10.07	10587	0.736	0.083	0.193	0.299	34.372961	-52.325915	1215.68	177.71
7	GUIDE	1111893736	7.34	10648	0.015	-0.023	0.095	0.143	34.011769	-52.888712	1314.13	-1994.63

## 2.4 Star Slots

### 2.4.1 Slot 3

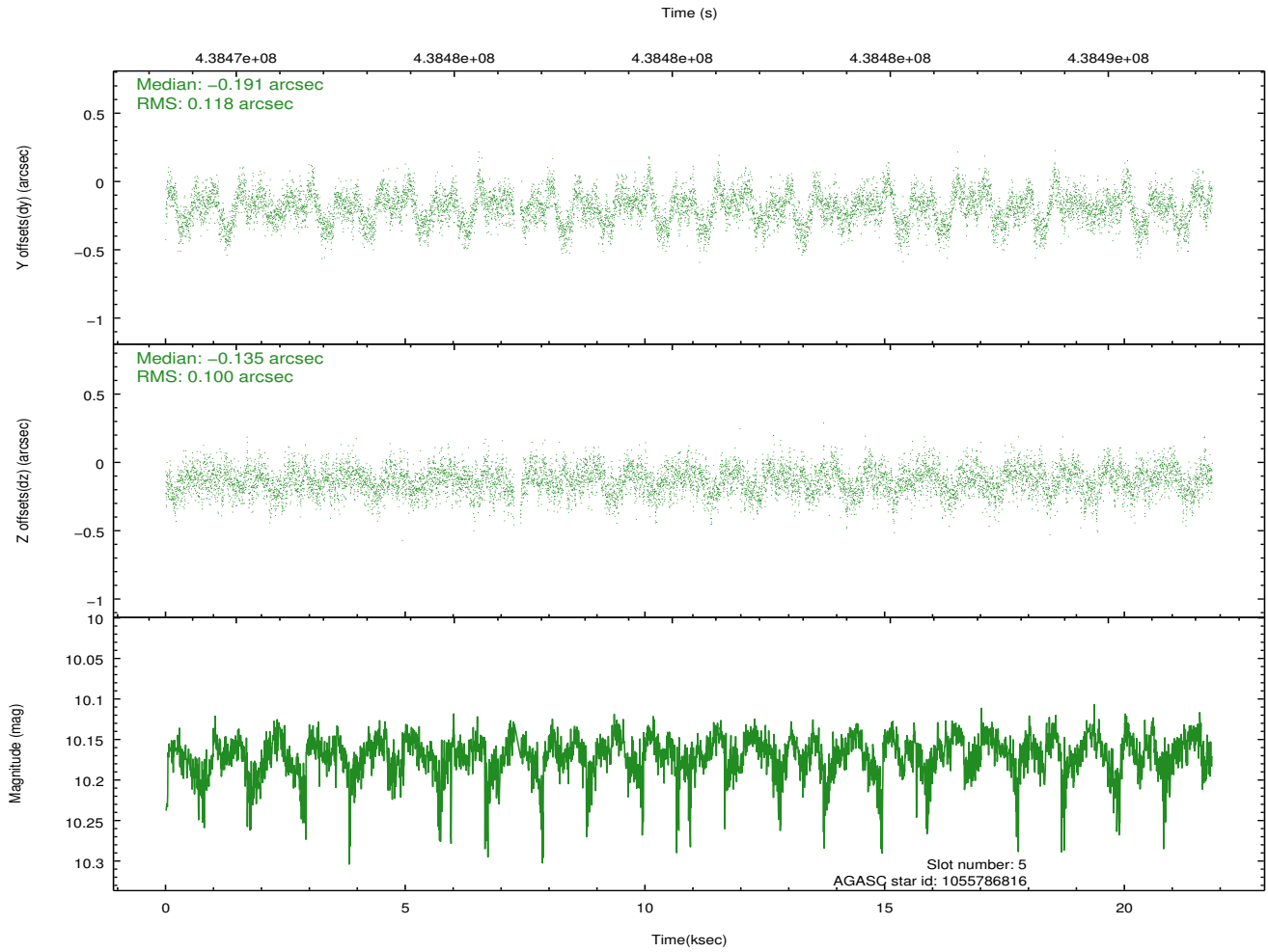
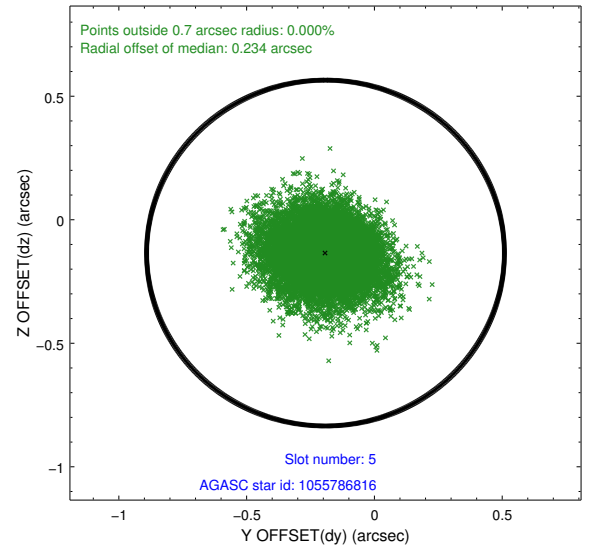
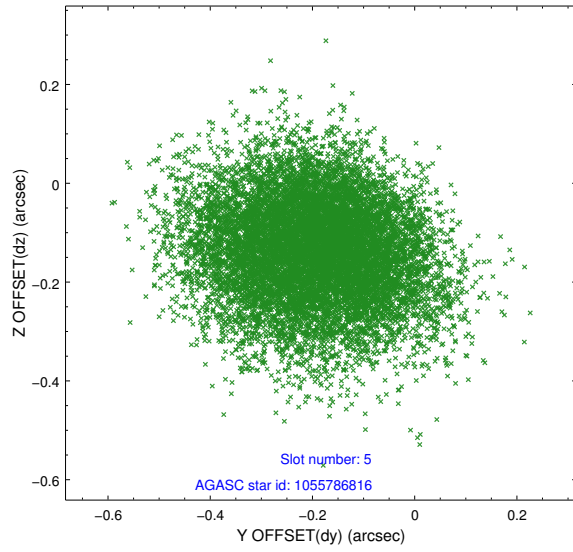


## 2.4.2 Slot 4

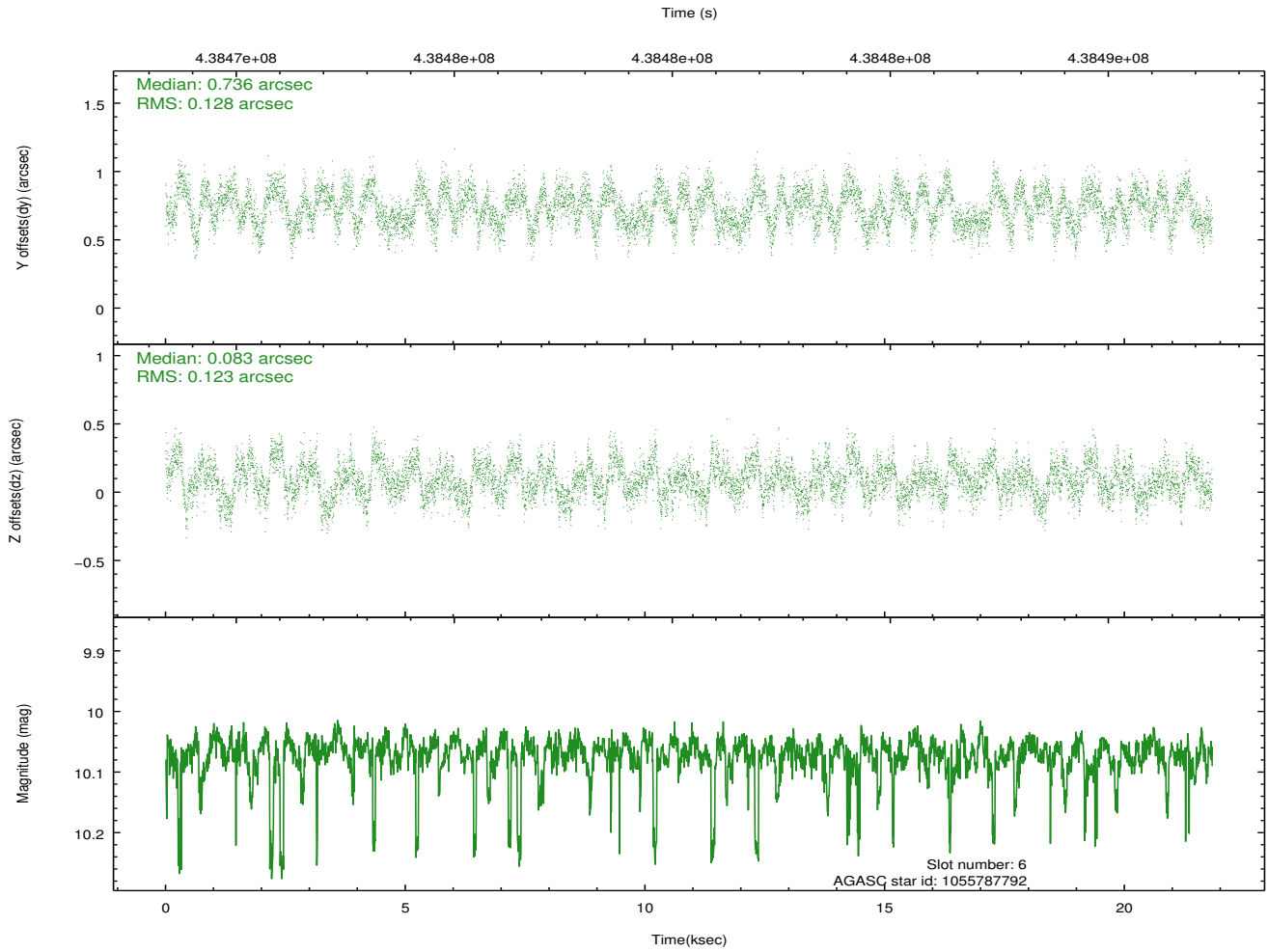
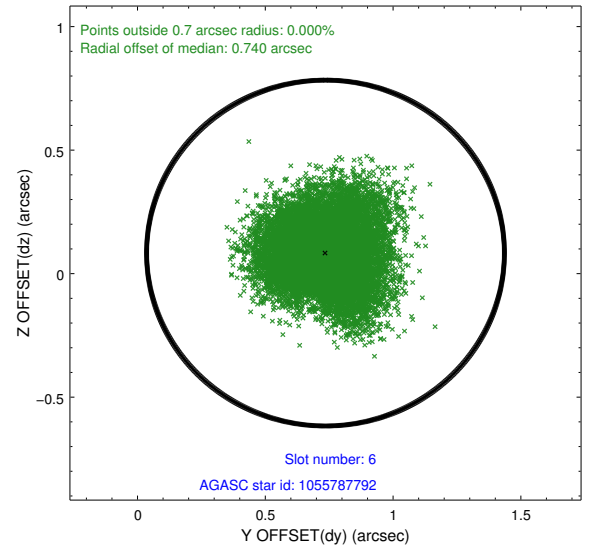
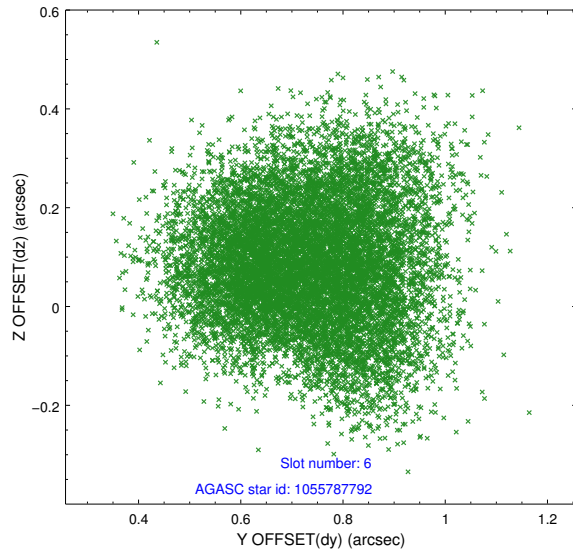




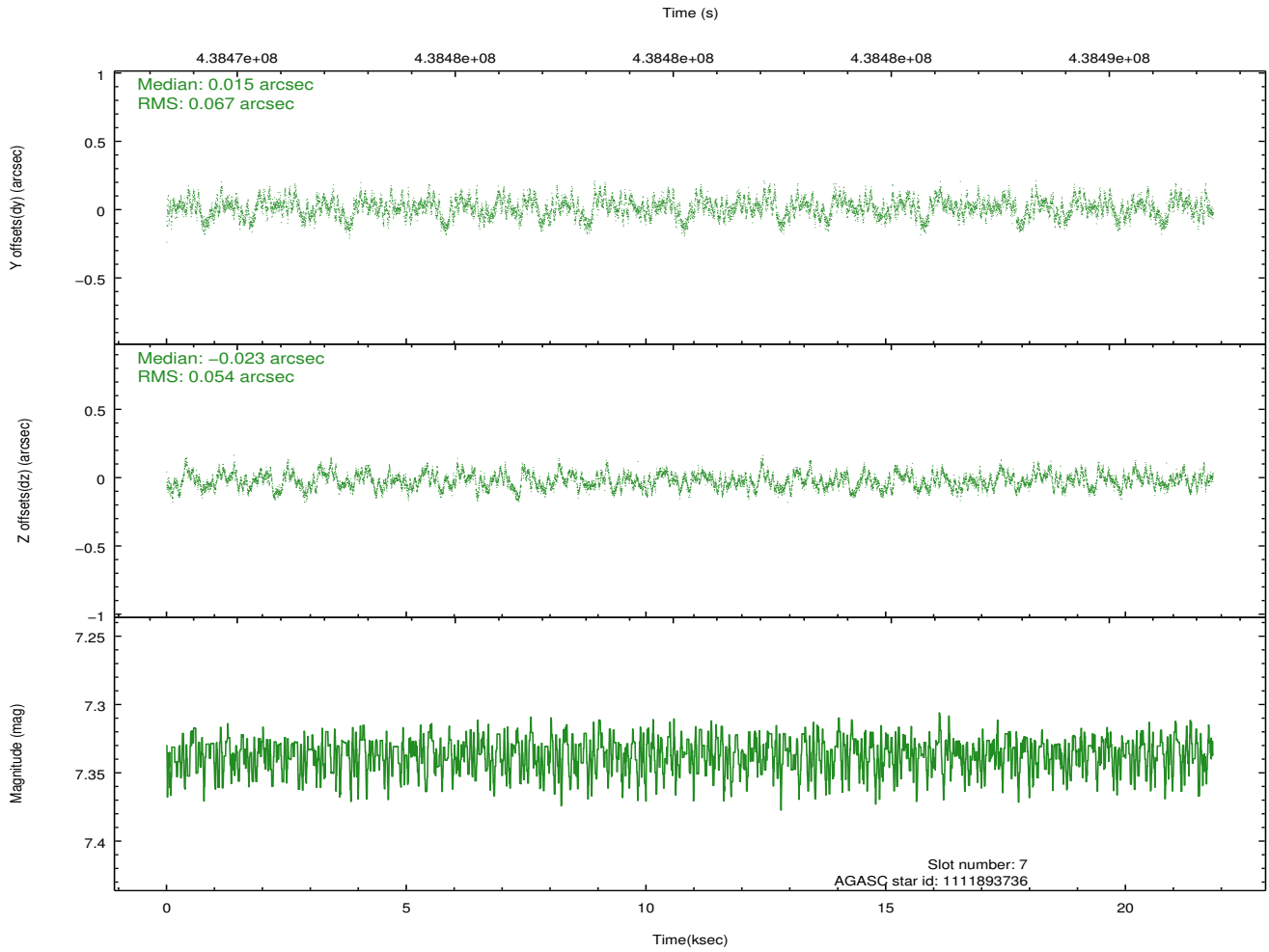
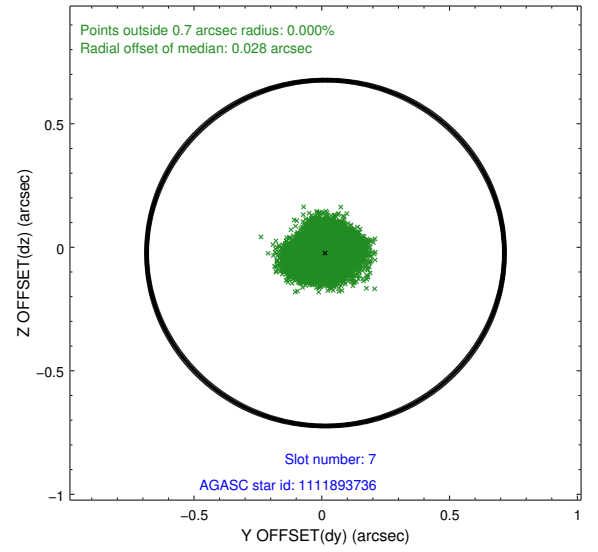
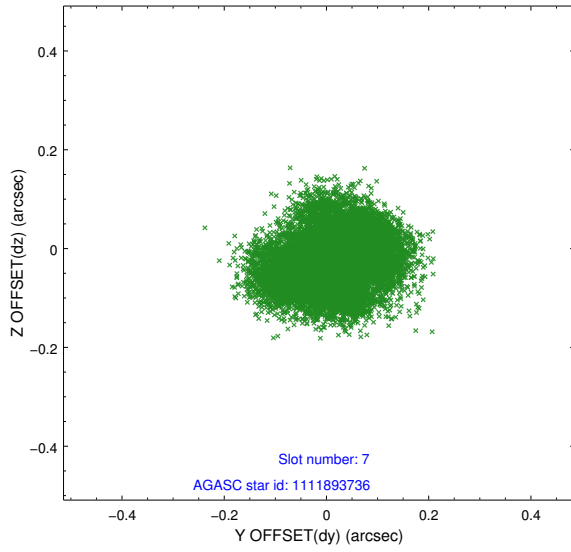
### 2.4.3 Slot 5



## 2.4.4 Slot 6

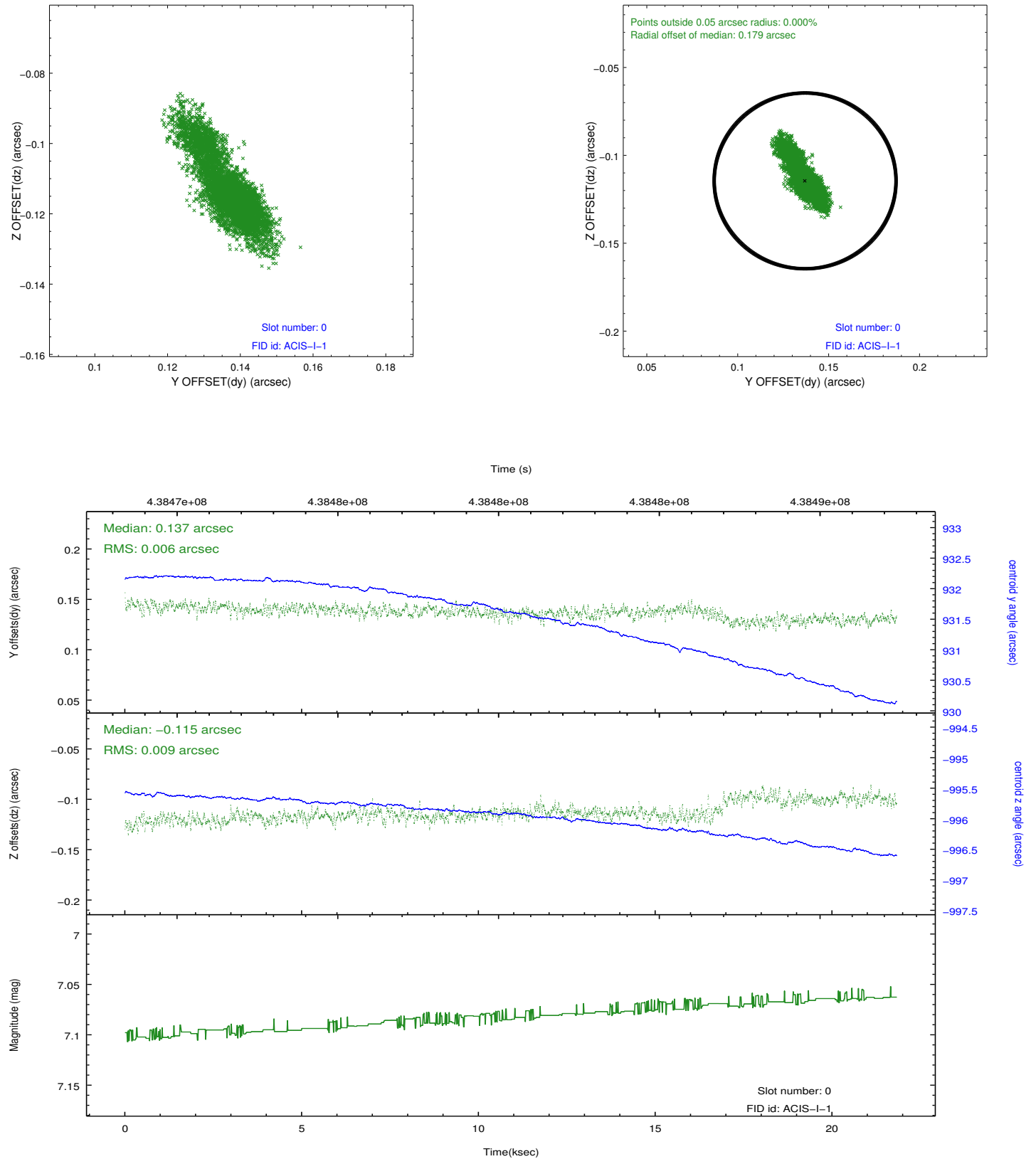


## 2.4.5 Slot 7

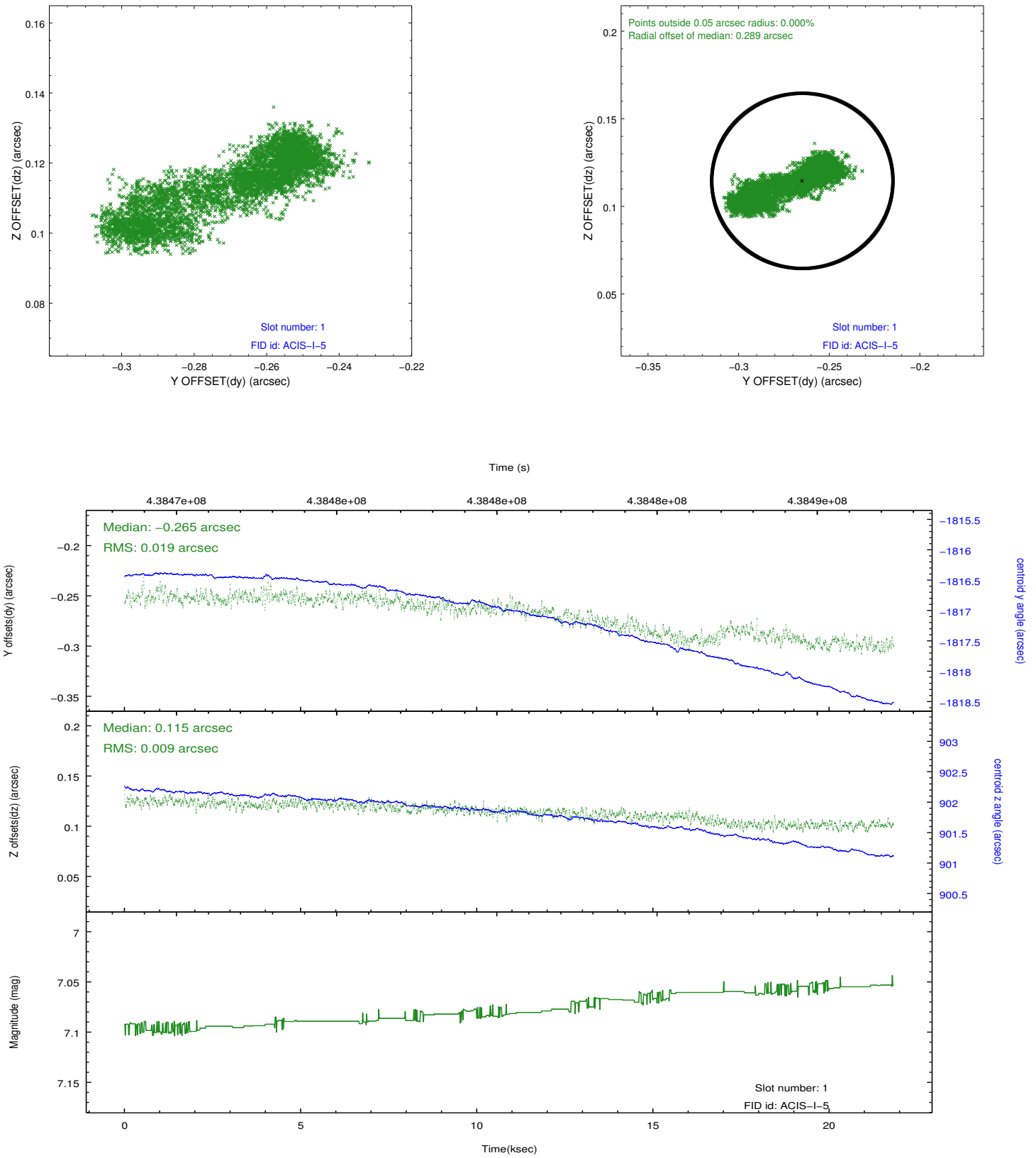


## 2.5 FID Slots

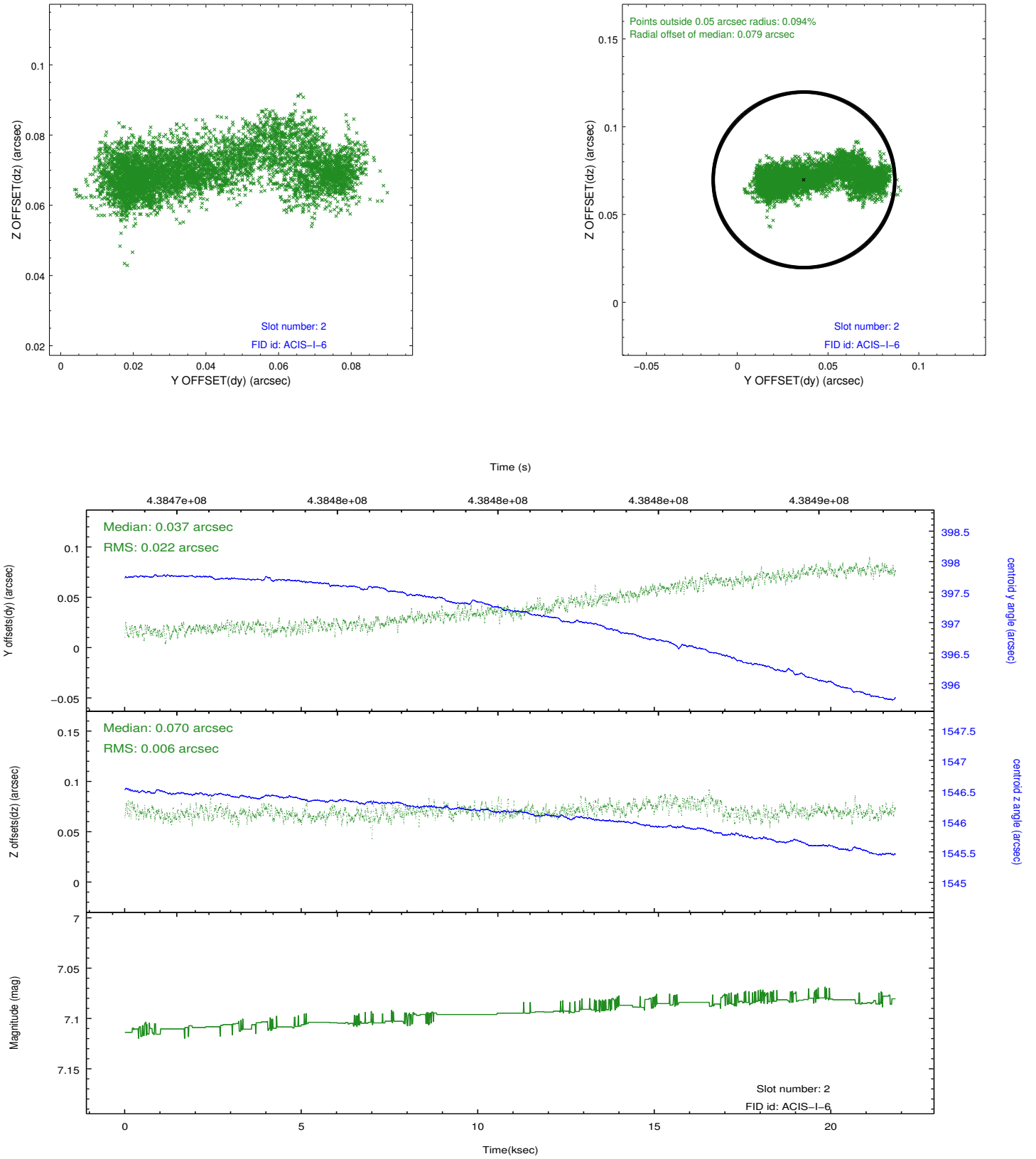
### 2.5.1 Slot 0



## 2.5.2 Slot 1



### 2.5.3 Slot 2



## A Summary

### A.1 Status

V&V Scientist	Jen Lauer
V&V Date (YYYY-MM-DD)	2012.02.29
V&V Edition	1
V&V Disposition and Status	OK
V&V Charge Time	21.056824606836

### A.2 Comments