

# V&V Reference Report

## L2 ASCDS Version : 8.4.3

Observation 12263 - L2 Version 2  
Chandra X-Ray Center

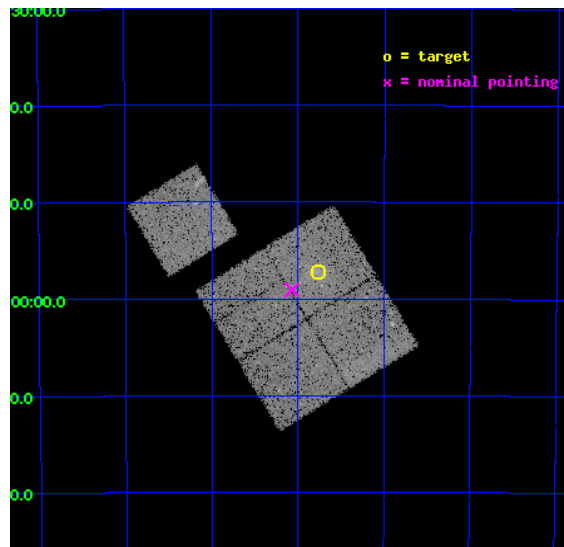
L2 Processing Date : Feb 27 2012

## Contents

<b>1</b>	<b>Front</b>	<b>2</b>
<b>2</b>	<b>OBI</b>	<b>3</b>
2.1	OBI . . . . .	3
2.1.1	Images . . . . .	3
2.1.2	Bias . . . . .	3
2.1.3	Parameters . . . . .	4
2.1.4	Events . . . . .	4
2.2	Compared Parameters . . . . .	5
2.3	Aspect . . . . .	6
2.4	Star Slots . . . . .	9
2.4.1	Slot 3 . . . . .	9
2.4.2	Slot 4 . . . . .	10
2.4.3	Slot 5 . . . . .	11
2.4.4	Slot 6 . . . . .	12
2.4.5	Slot 7 . . . . .	13
2.5	FID Slots . . . . .	14
2.5.1	Slot 0 . . . . .	14
2.5.2	Slot 1 . . . . .	15
2.5.3	Slot 2 . . . . .	16
<b>A</b>	<b>Summary</b>	<b>17</b>
A.1	Status . . . . .	17
A.2	Comments . . . . .	17

# 1 Front

seq_num	800982	Sequence number
obs_id	12263	Observation id
title	Chandra Observations of the ACT Sample of SZE-Selected Galaxy Clusters	Proposal title
observer	Prof John Hughes	Principal investigator
object	ACT J0232-5257	Source name
dtcycle	0	&#160
cycle	P	events from which exps? Prim/Second/Both
ra_targ	38.1925	Observer's specified target RA [deg]
dec_targ	-52.954722	Observer's specified target Dec [deg]
ra_nom	38.267834061627	Nominal RA [deg]
dec_nom	-52.984744746146	Nominal Dec [deg]
roll_nom	328.57776625623	Nominal Roll [deg]
revision	2	Processing version of data
ontime	20057.000154257	Sum of GTIs [s]
livetime	19794.940681493	Livetime [s]
ontime0	20057.000154257	Sum of GTIs [s]
ontime1	20057.000154257	Sum of GTIs [s]
ontime2	20053.859153986	Sum of GTIs [s]
ontime3	20057.000154257	Sum of GTIs [s]
ontime6	20050.71816355	Sum of GTIs [s]
l2events	62239	Number of level 2 events

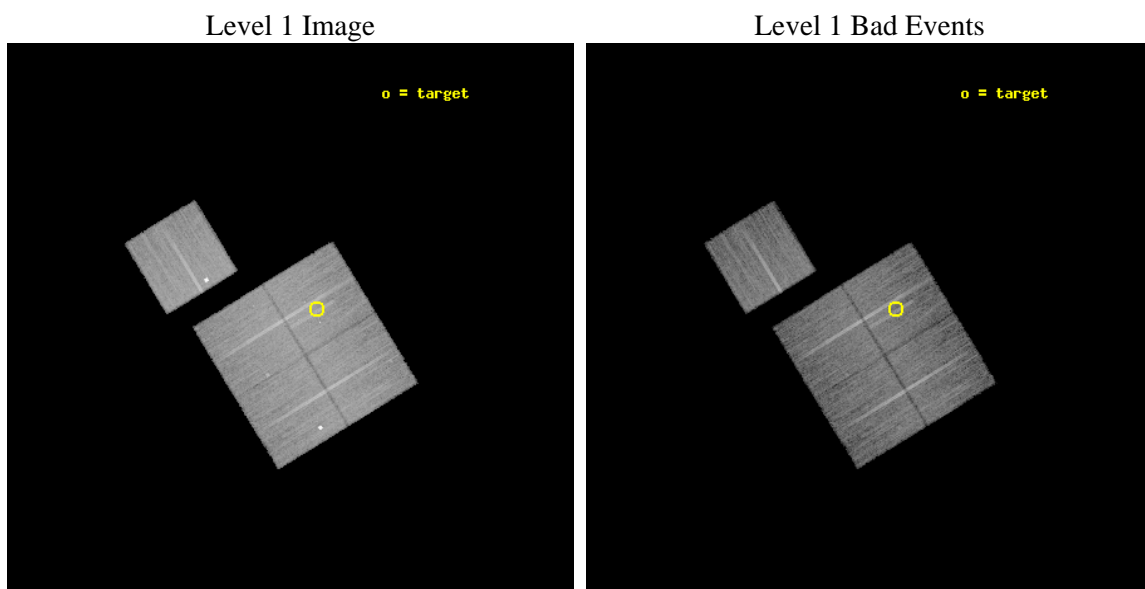




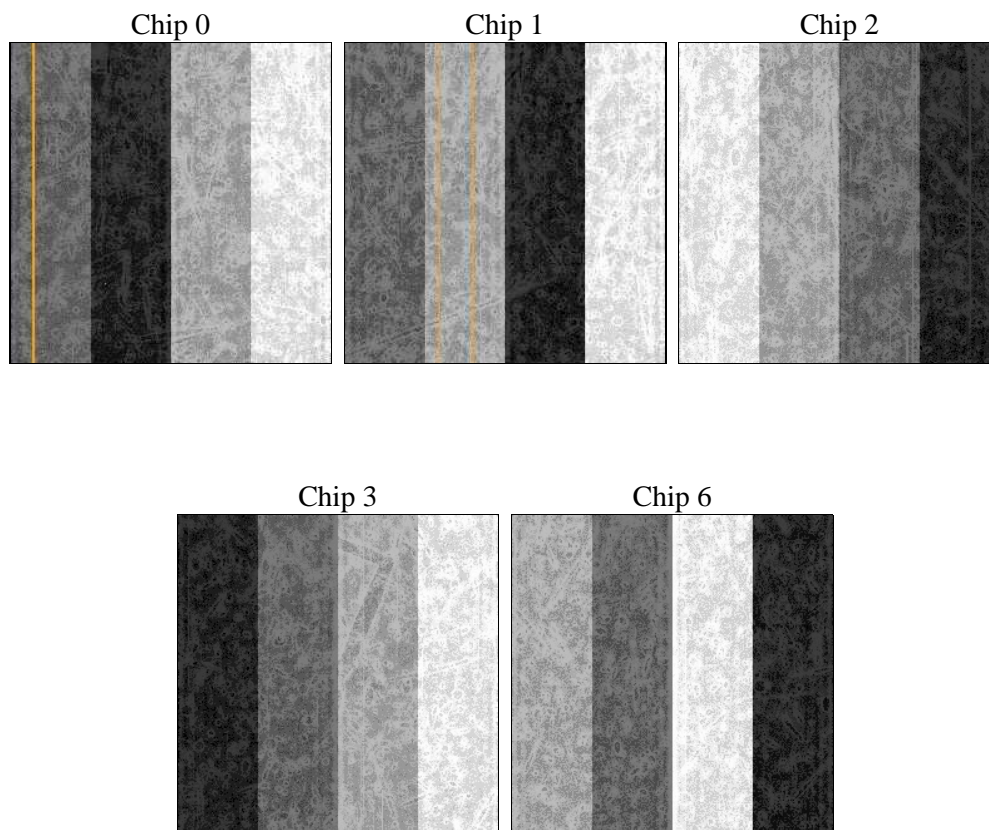
## 2 OBI

### 2.1 OBI

#### 2.1.1 Images



#### 2.1.2 Bias



### 2.1.3 Parameters

obi_num	0	Obi number	sched_exp_time	20000.749000	[s] Scheduled observation exposure time
ascdsver	8.4.3	Processing system revision	ontime	20057.000154257	Sum of GTIs [s]
caldbver	4.4.8	&#160	ontime0	20057.000154257	Sum of GTIs [s]
date	2012-02-28T01:19:25	Date and time of file creation	ontime1	20057.000154257	Sum of GTIs [s]
revision	2	Processing version of data	ontime2	20053.859153986	Sum of GTIs [s]
			ontime3	20057.000154257	Sum of GTIs [s]
			ontime6	20050.71816355	Sum of GTIs [s]
			l1events	624456	Number of level 1 events

### 2.1.4 Events

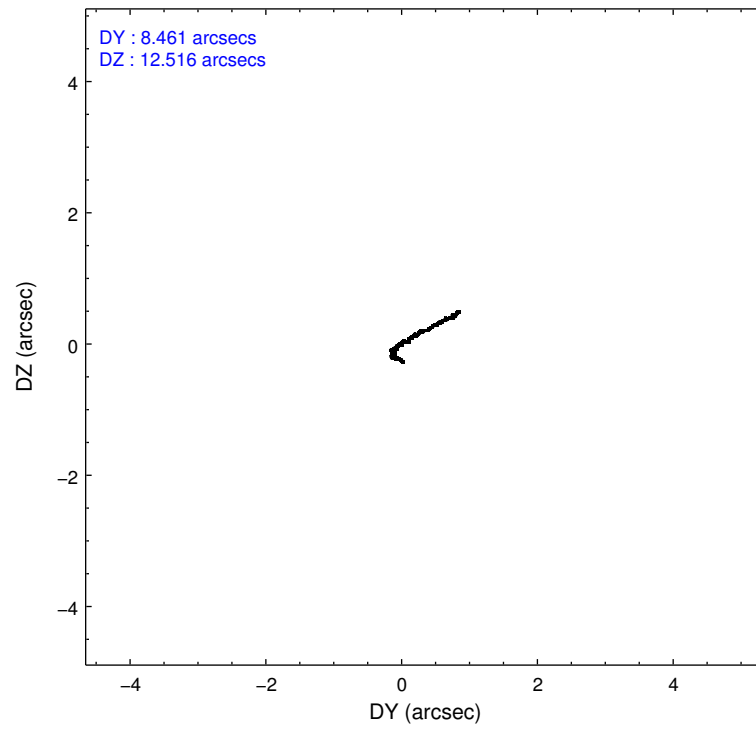
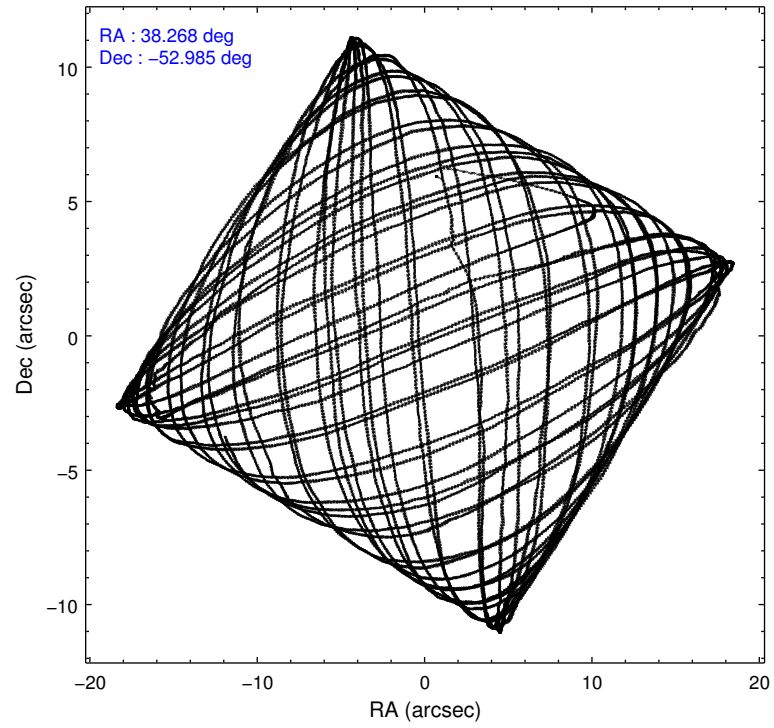
	ccd 0	ccd 1	ccd 2	ccd 3	ccd 6
level 1 events	122716	117630	124318	125647	134145
rejected events	102729	101860	110218	110516	113292
rejected %	83%	86%	88%	87%	84%

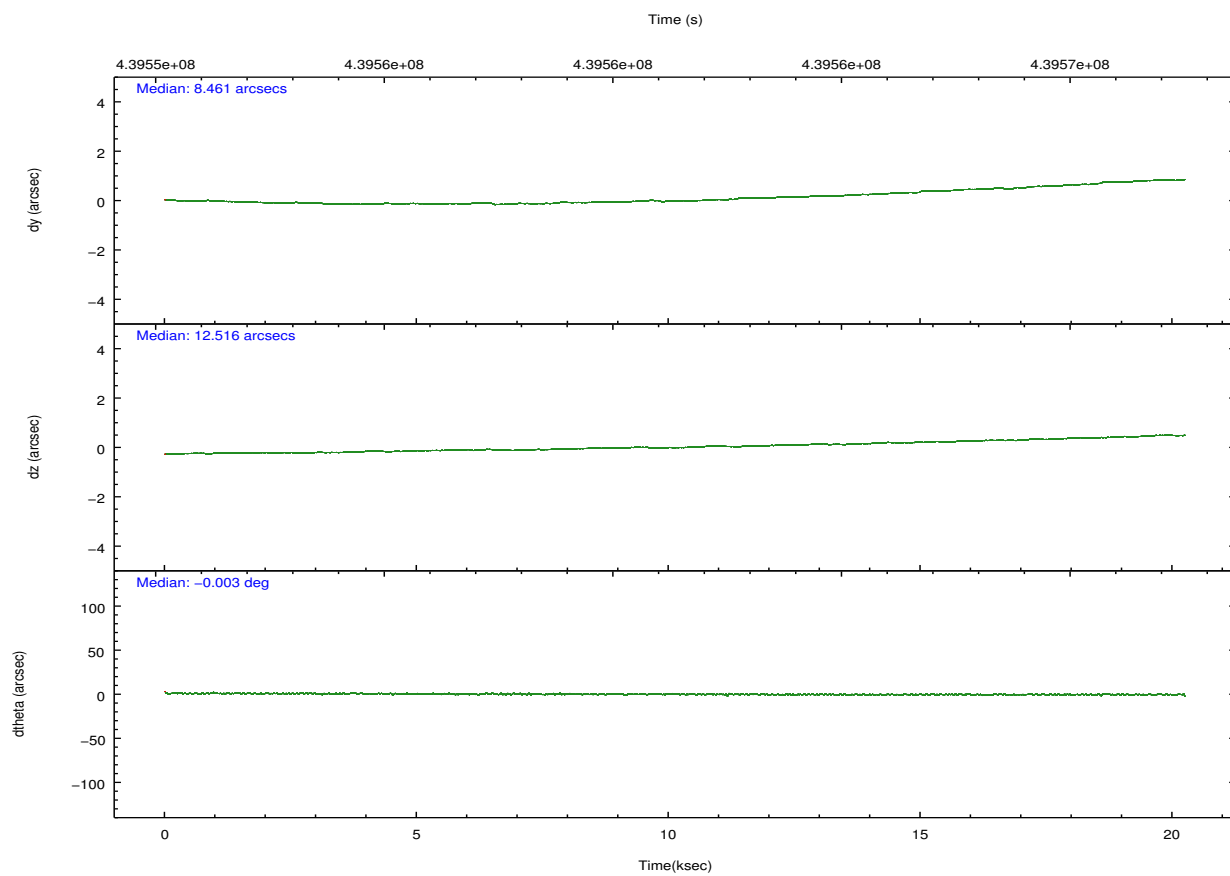
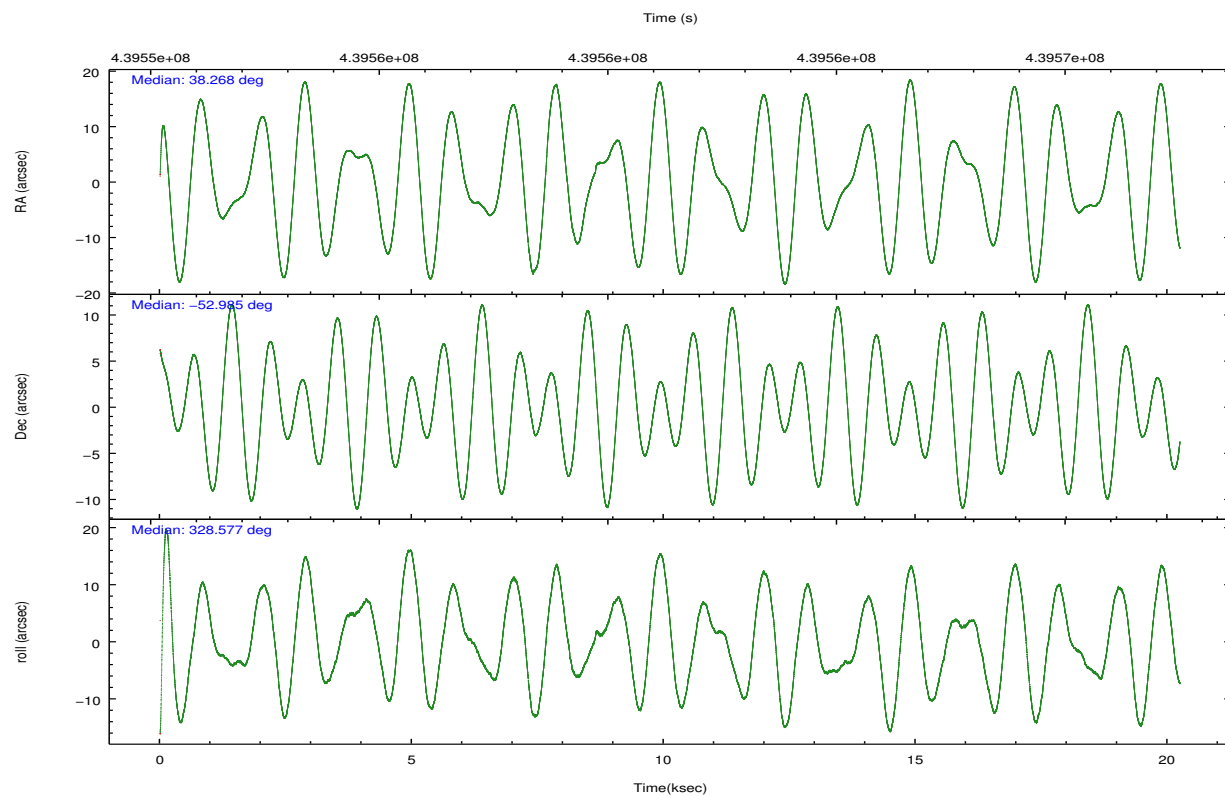
	ccd 0	ccd 1	ccd 2	ccd 3	ccd 6
grade 0 events	4740	5511	5175	6096	5175
	3%	4%	4%	4%	3%
grade 1 events	59	59	98	94	62
	0%	0%	0%	0%	0%
grade 2 events	9305	3819	3342	3139	9379
	7%	3%	2%	2%	6%
grade 3 events	1593	1614	1440	1551	1515
	1%	1%	1%	1%	1%
grade 4 events	1494	1516	1408	1455	1469
	1%	1%	1%	1%	1%
grade 5 events	5576	5772	5210	6205	6076
	4%	4%	4%	4%	4%
grade 6 events	2857	3316	2736	2894	3321
	2%	2%	2%	2%	2%
grade 7 events	97092	96023	104909	104213	107148
	79%	81%	84%	82%	79%

## 2.2 Compared Parameters

Parameter	Planned	Actual	Parameter	Planned	Actual
Instrument	ACIS	ACIS	Obspar format version number	7	7
Detector	ACIS-01236	ACIS-01236	Obspar file type	PREDICTED	ACTUAL
Grating	NONE	NONE	Obspar update status	NONE	UPDATED
Data mode	VFAINT	VFAINT	CCD I0 on	Y	Y
Observation mode	POINTING	POINTING	CCD I1 on	Y	Y
[deg] Pointing RA	38.222169	38.26783406162741	CCD I2 on	Y	Y
[deg] Pointing Dec	-52.984149	-52.98474474614648	CCD I3 on	Y	Y
[deg] Pointing Roll	328.332638	328.5777662562316	CCD S0 on	N	N
[mm] SIM focus pos	-0.782348	-0.7809083437167272	CCD S1 on	N	N
[mm] SIM defocus	0	0.001439871863259334	CCD S2 on	O1	Y
[mm] SIM translation stage pos	-225.792463	-225.7829997647864	CCD S3 on	N	N
[mm] SIM translation stage offset	-7.8	-7.809453238143249	CCD S4 on	N	N
[s] Observation start time (MET)	439551491.184000	439550382.51651	CCD S5 on	N	N
Observation start date	2011-12-06T09:37:05	2011-12-06T09:19:42	Number of optional ACIS chips dropped	0	0
[s] Observation end time (MET)	439571491.184000	439571726.60513	On-chip summing requested	N	N
Observation end date	2011-12-06T15:10:25	2011-12-06T15:15:26	Subarray requested	NONE	NONE
Read mode	TIMED	TIMED	Alternating exposures requested	N	N
			[s] Primary exposure time	0.000000	3.1

## 2.3 Aspect



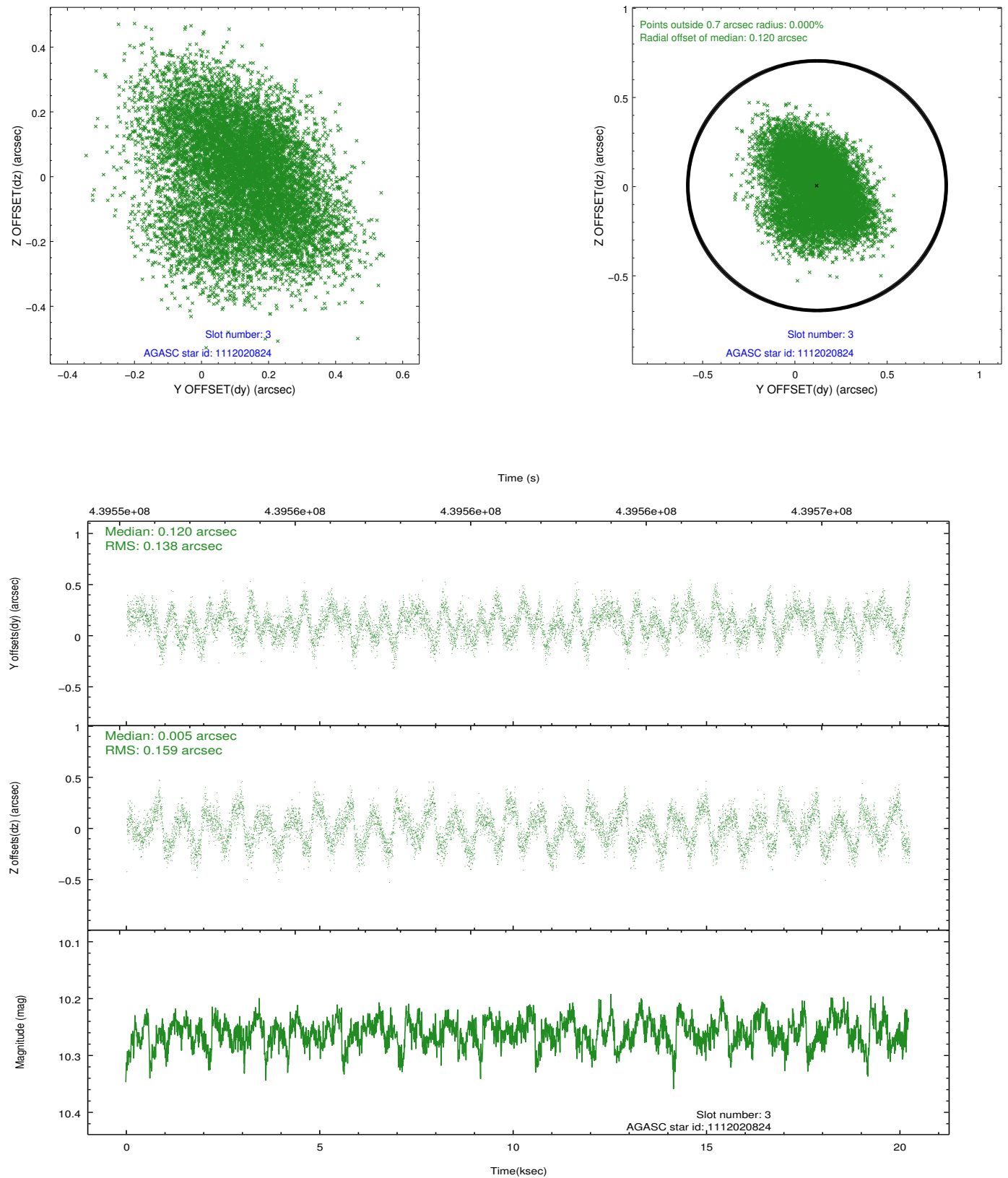


### Slot Statistics

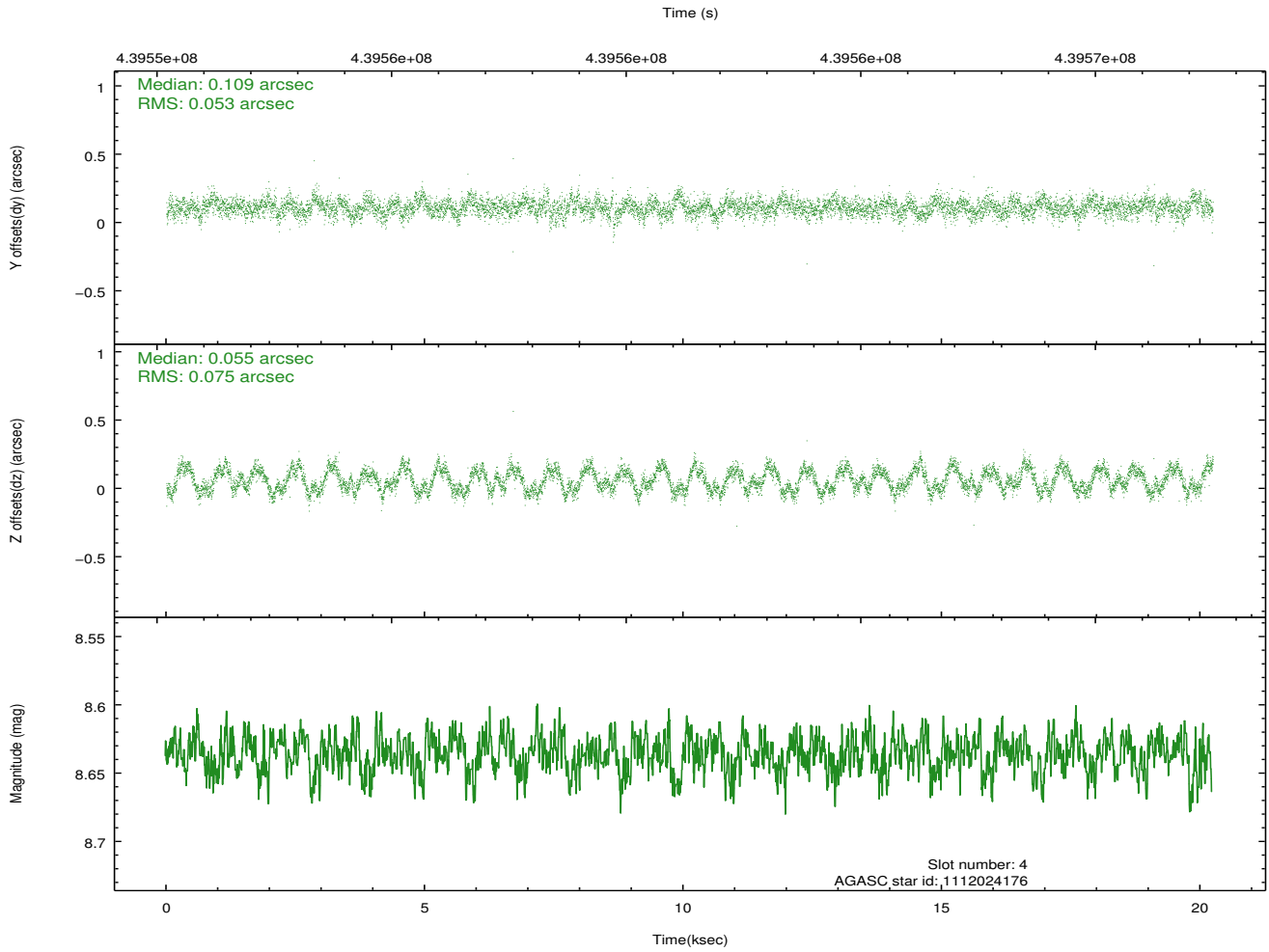
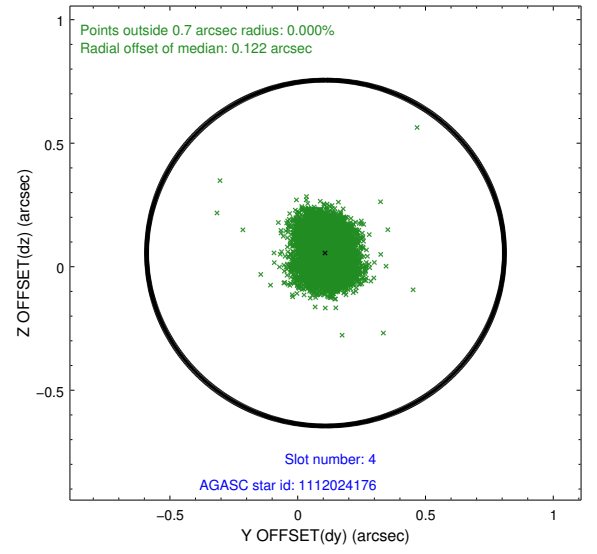
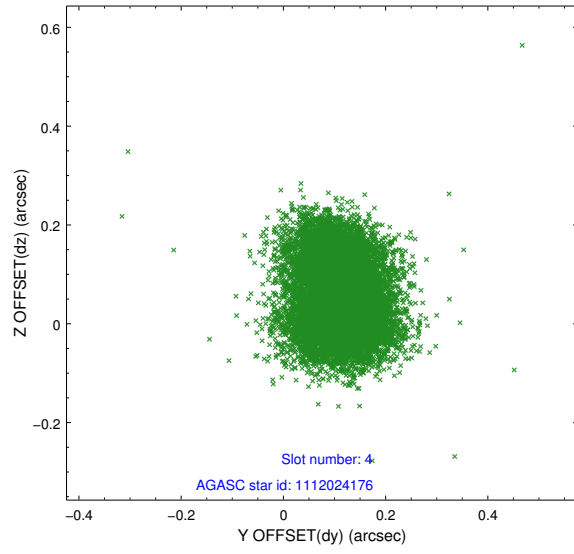
slot	status	id	mag	n_pts	med_dy	med_dz	dr1	dr2	ra	dec	mean_y	mean_z
0	FID	ACIS-I-1	7.14	4938	0.123	-0.104	0.008	0.014	0.000000	0.000000	931.02	-996.51
1	FID	ACIS-I-5	7.14	4937	-0.275	0.098	0.012	0.025	0.000000	0.000000	-1817.42	901.01
2	FID	ACIS-I-6	7.16	4938	0.061	0.077	0.012	0.023	0.000000	0.000000	396.26	1545.75
3	GUIDE	1112020824	10.26	9859	0.120	0.005	0.229	0.357	38.128932	-52.709062	-692.60	736.06
4	GUIDE	1112024176	8.64	9872	0.109	0.055	0.099	0.150	39.255198	-53.131105	2185.43	707.67
5	GUIDE	1112025248	8.26	9869	-0.042	-0.061	0.074	0.119	39.007472	-53.046025	1569.36	695.02
6	GUIDE	1112026128	8.89	9874	-0.153	0.009	0.107	0.163	38.912146	-52.876527	1076.92	1110.77
7	GUIDE	1112016304	9.68	9866	-0.040	0.001	0.168	0.253	36.823821	-53.261441	-2022.59	-2455.17

## 2.4 Star Slots

### 2.4.1 Slot 3

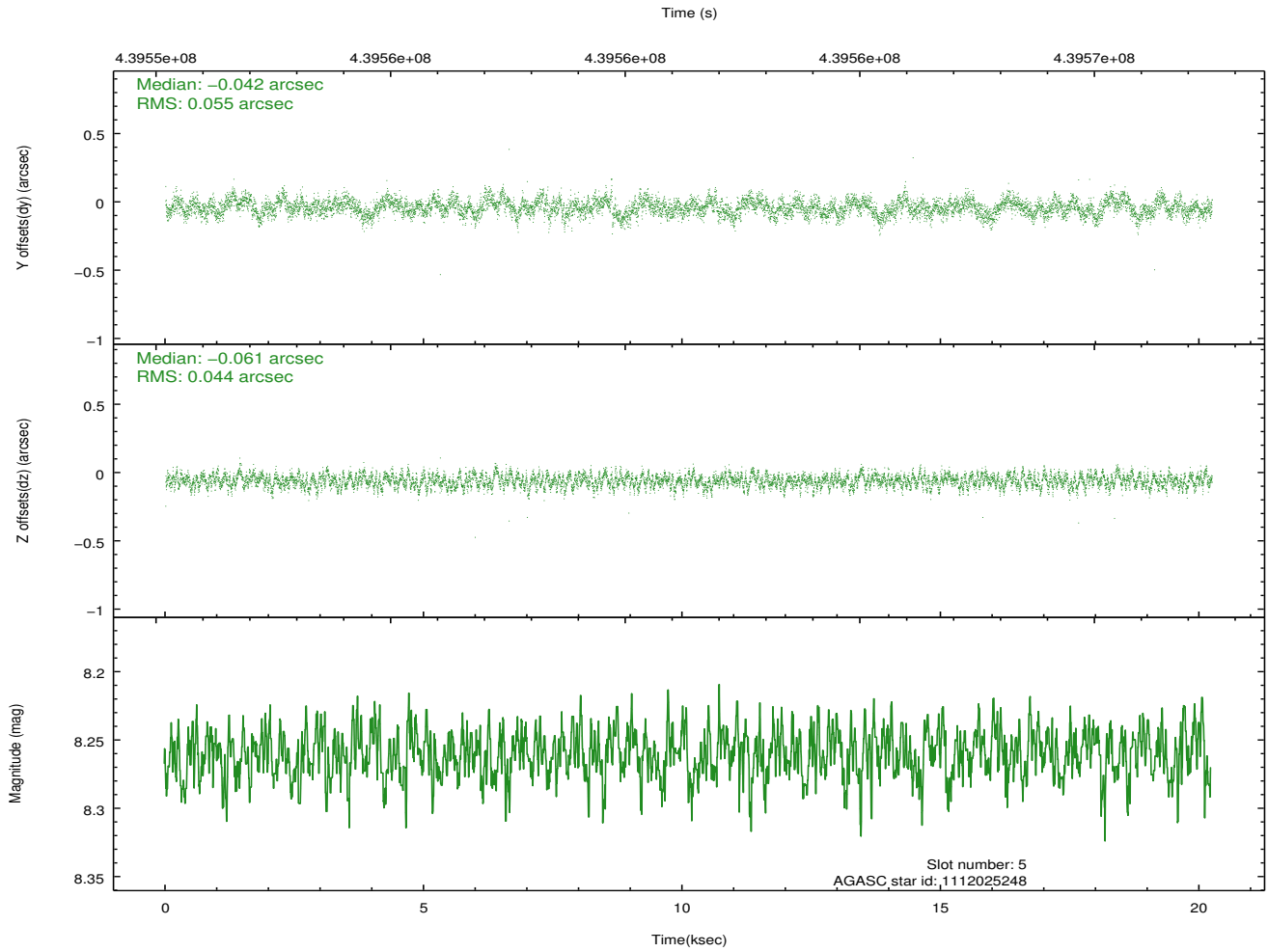
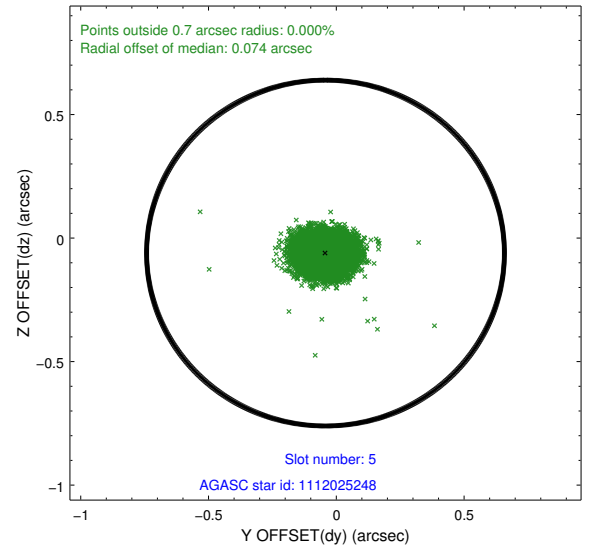
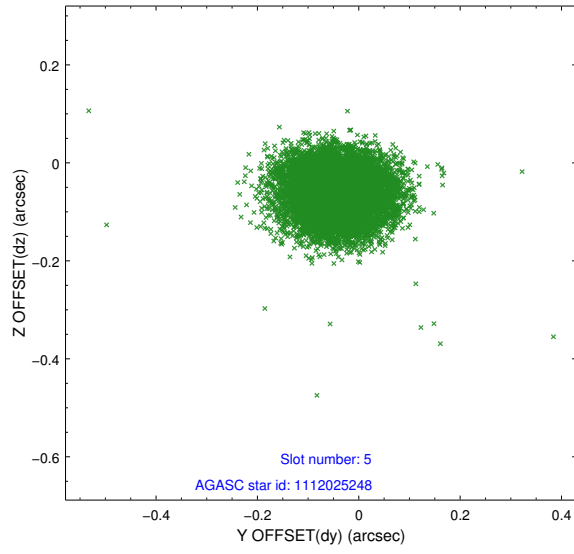


## 2.4.2 Slot 4

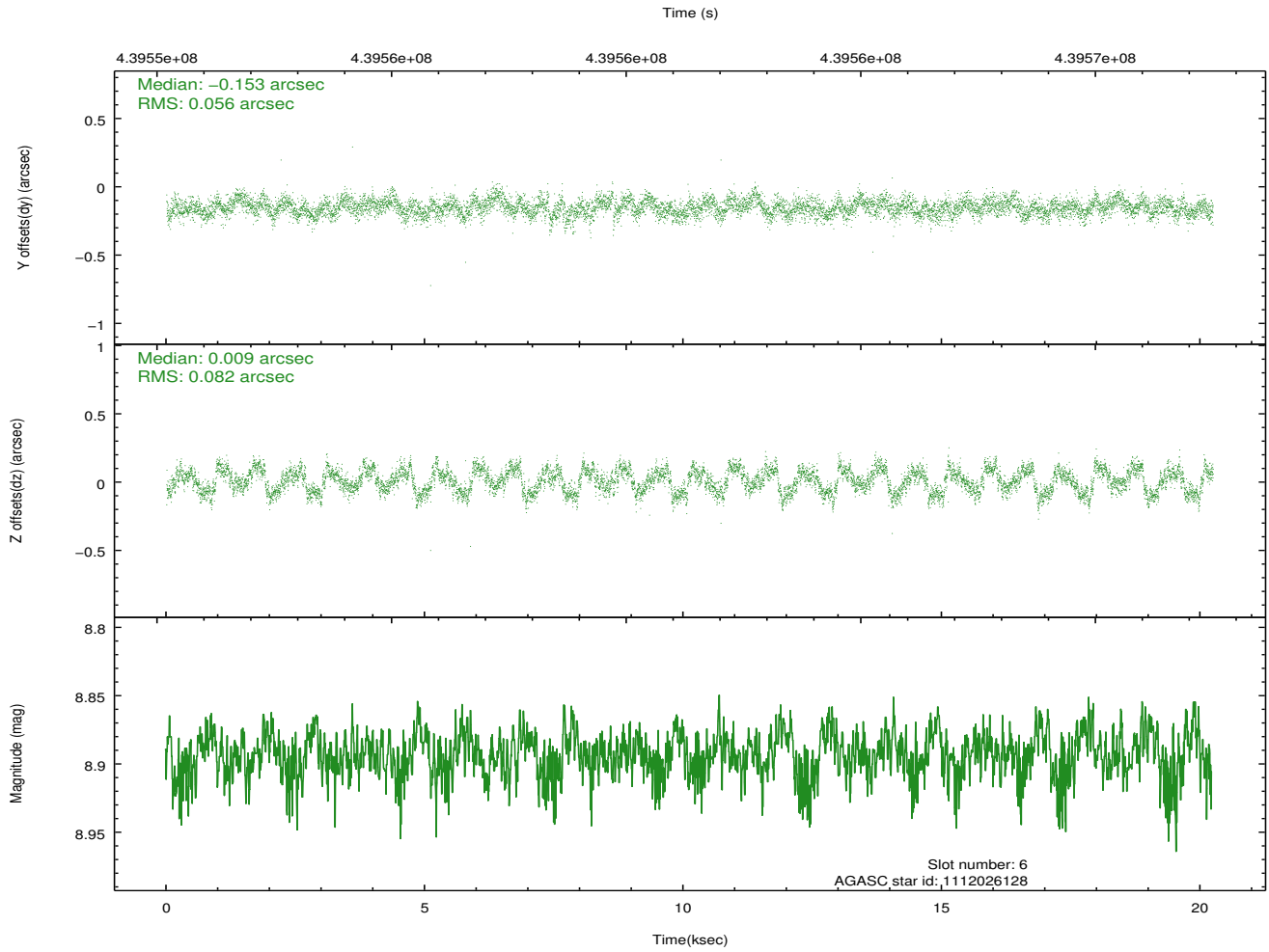
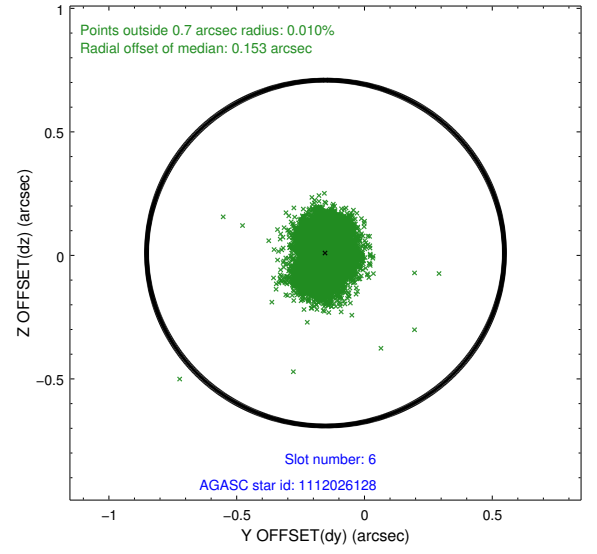
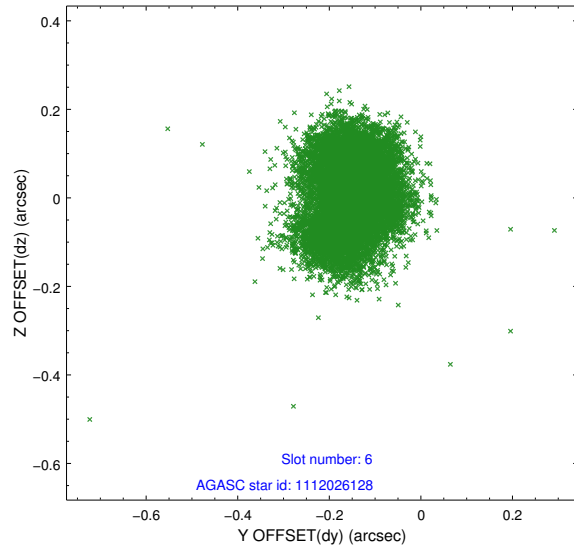




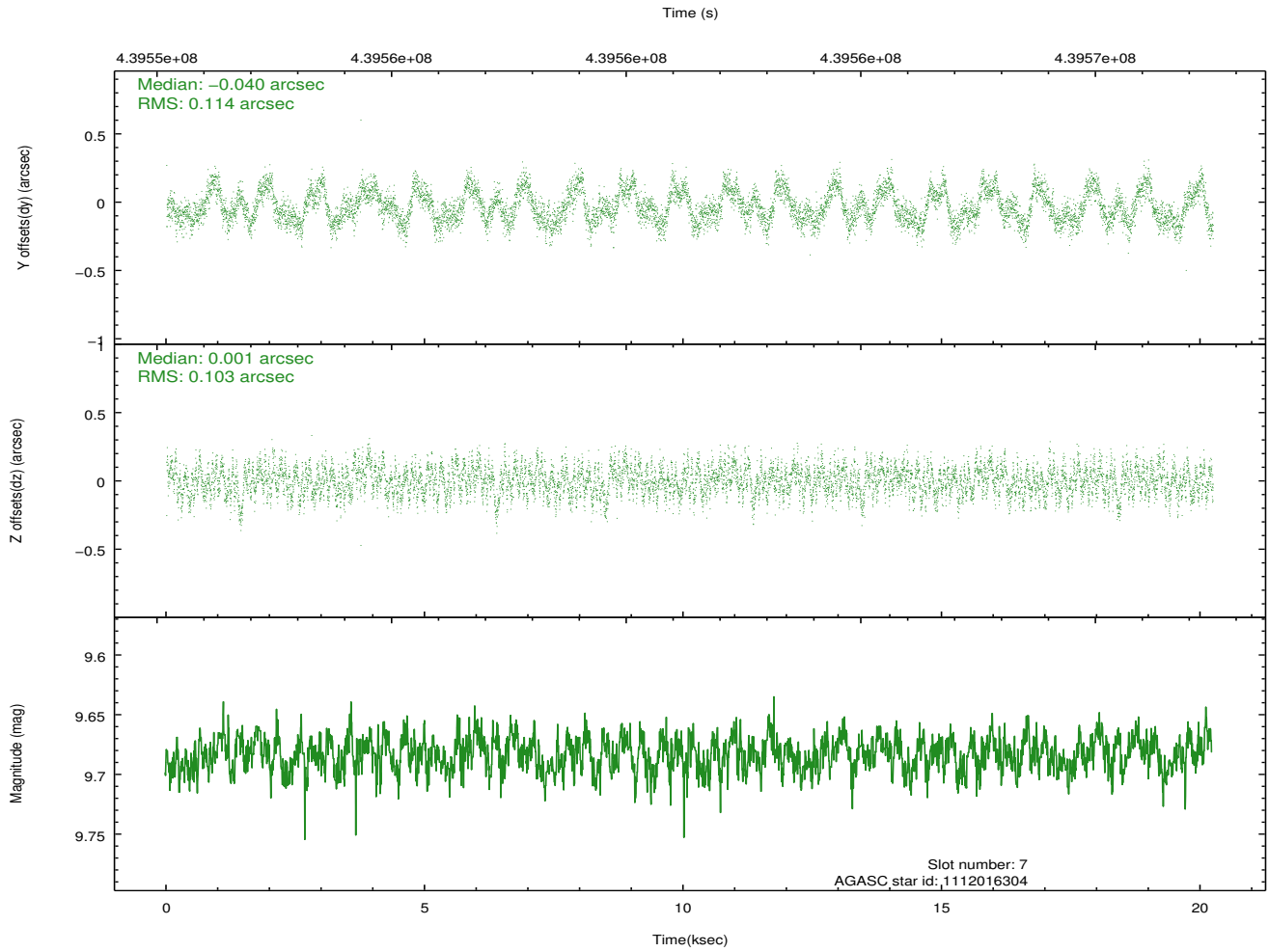
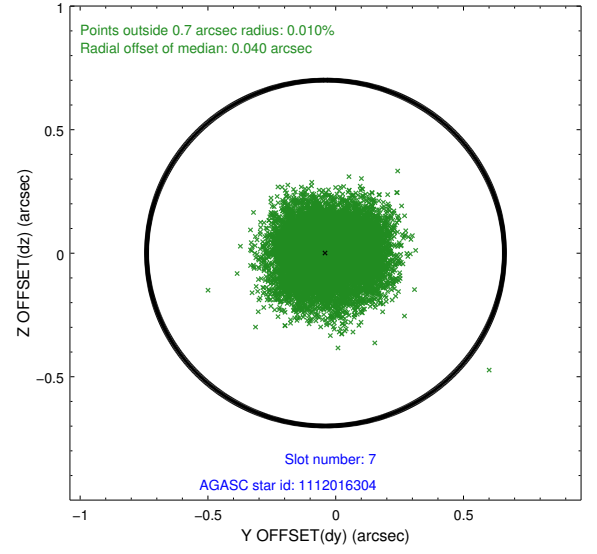
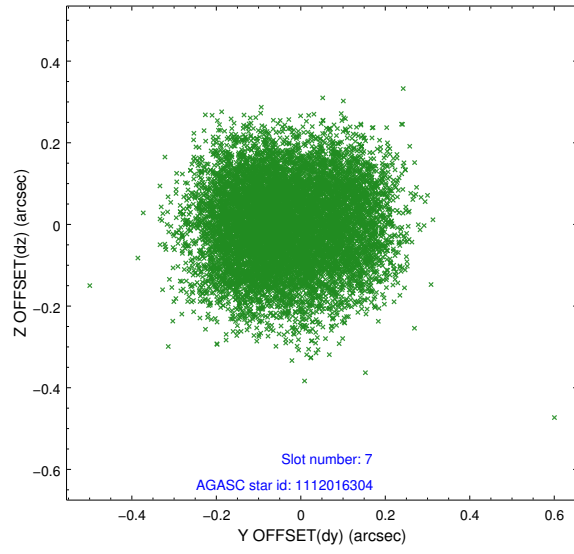
### 2.4.3 Slot 5



## 2.4.4 Slot 6

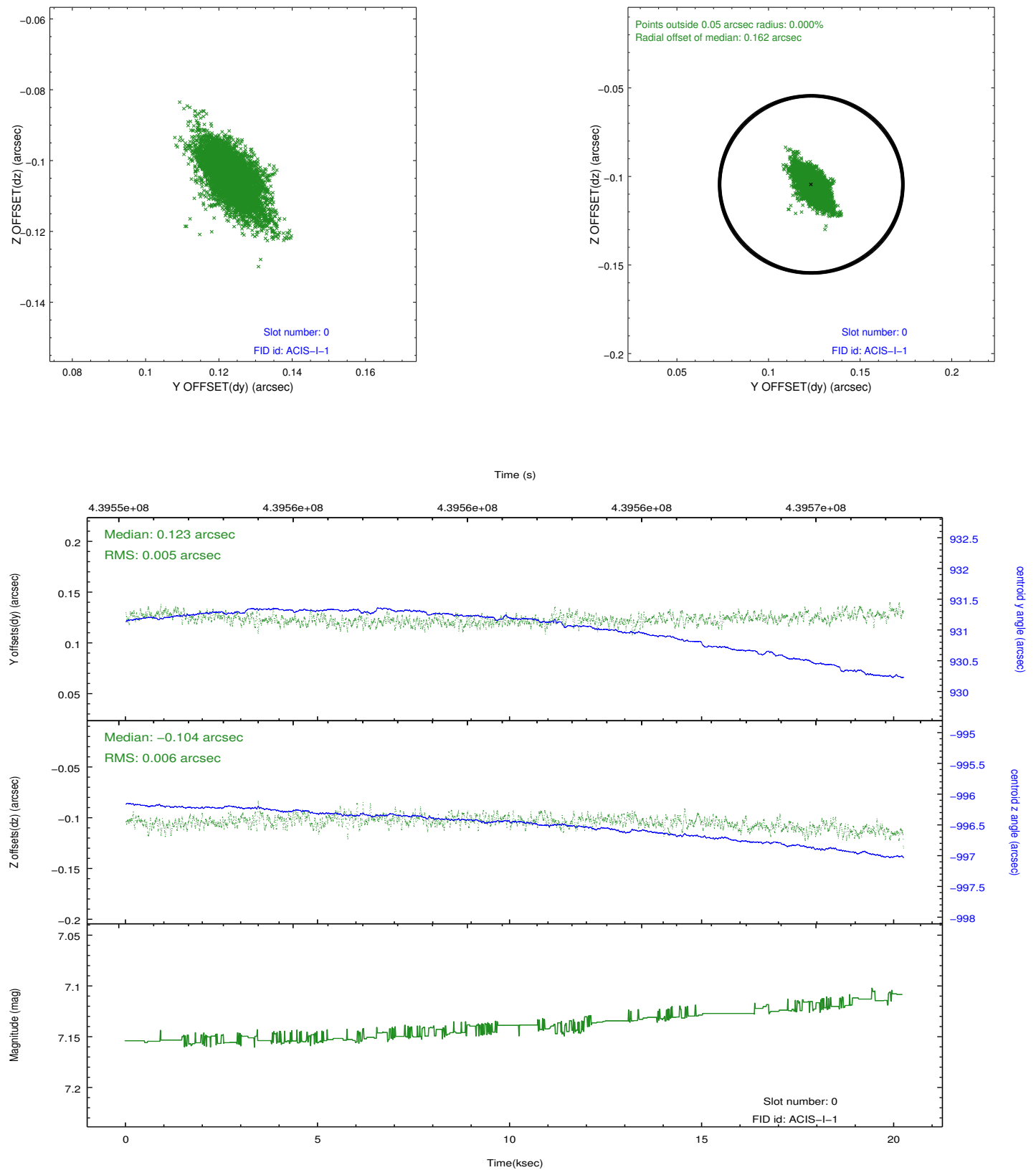


## 2.4.5 Slot 7

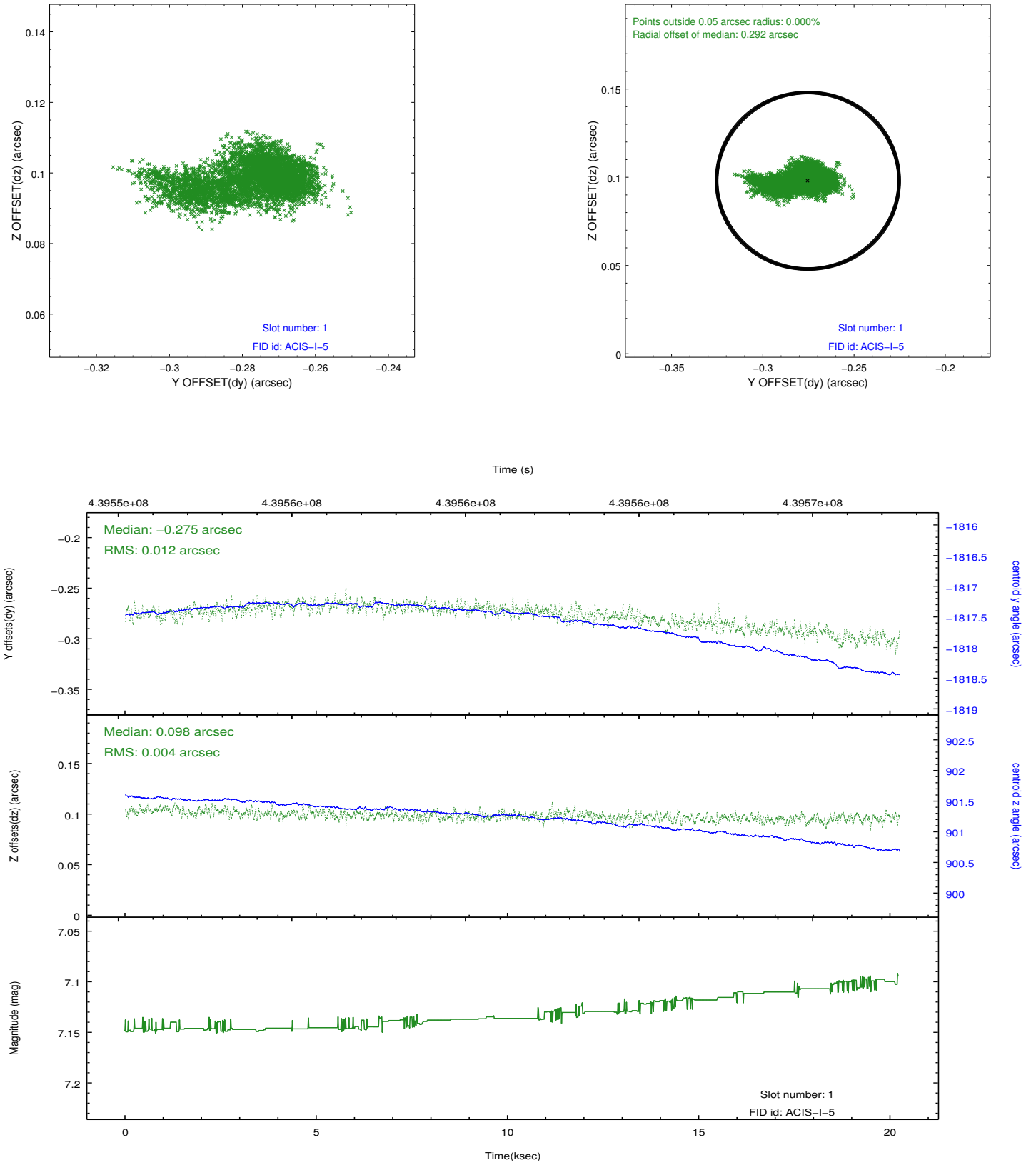


## 2.5 FID Slots

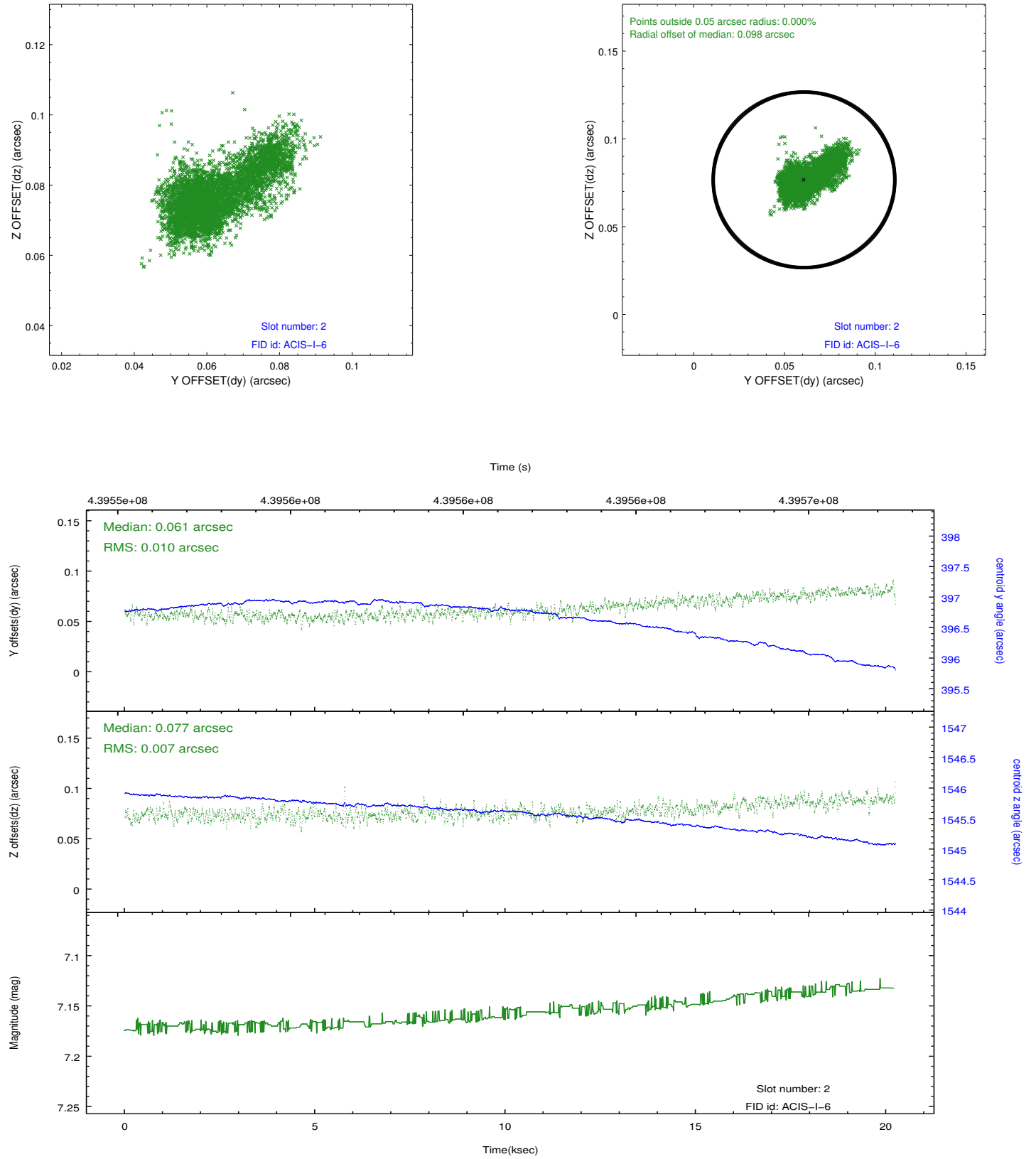
### 2.5.1 Slot 0



## 2.5.2 Slot 1



### 2.5.3 Slot 2



## **A Summary**

### **A.1 Status**

V&V Scientist	Jen Lauer
V&V Date (YYYY-MM-DD)	2012.02.29
V&V Edition	1
V&V Disposition and Status	OK
V&V Charge Time	20.057000154257

### **A.2 Comments**