

# V&V Reference Report

## L2 ASCDS Version : 8.4.3

Observation 12260 - L2 Version 1  
Chandra X-Ray Center

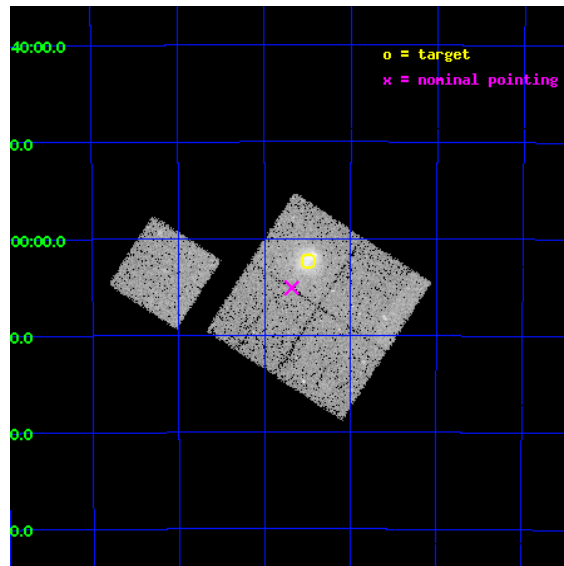
L2 Processing Date : Jan 6 2012

## Contents

<b>1</b>	<b>Front</b>	<b>2</b>
<b>2</b>	<b>OBI</b>	<b>3</b>
2.1	OBI . . . . .	3
2.1.1	Images . . . . .	3
2.1.2	Bias . . . . .	3
2.1.3	Parameters . . . . .	4
2.1.4	Events . . . . .	4
2.2	Compared Parameters . . . . .	5
2.3	Aspect . . . . .	6
2.4	Star Slots . . . . .	9
2.4.1	Slot 3 . . . . .	9
2.4.2	Slot 4 . . . . .	10
2.4.3	Slot 5 . . . . .	11
2.4.4	Slot 6 . . . . .	12
2.4.5	Slot 7 . . . . .	13
2.5	FID Slots . . . . .	14
2.5.1	Slot 0 . . . . .	14
2.5.2	Slot 1 . . . . .	15
2.5.3	Slot 2 . . . . .	16
<b>A</b>	<b>Summary</b>	<b>17</b>
A.1	Status . . . . .	17
A.2	Comments . . . . .	17

# 1 Front

seq_num	800979	Sequence number
obs_id	12260	Observation id
title	Chandra Observations of the ACT Sample of SZE-Selected Galaxy Clusters	Proposal title
observer	Prof John Hughes	Principal investigator
object	ACT J0245-5302	Source name
dtcycle	0	&#160
cycle	P	events from which exps? Prim/Second/Both
ra_targ	41.37375	Observer's specified target RA [deg]
dec_targ	-53.038417	Observer's specified target Dec [deg]
ra_nom	41.420436623251	Nominal RA [deg]
dec_nom	-53.08504616078	Nominal Dec [deg]
roll_nom	303.09598636926	Nominal Roll [deg]
revision	1	Processing version of data
ontime	20057.000154257	Sum of GTIs [s]
livetime	19794.940681493	Livetime [s]
ontime0	20053.859164	Sum of GTIs [s]
ontime1	20057.000154257	Sum of GTIs [s]
ontime2	20057.000154257	Sum of GTIs [s]
ontime3	20057.000154257	Sum of GTIs [s]
ontime6	20057.000154257	Sum of GTIs [s]
l2events	71797	Number of level 2 events

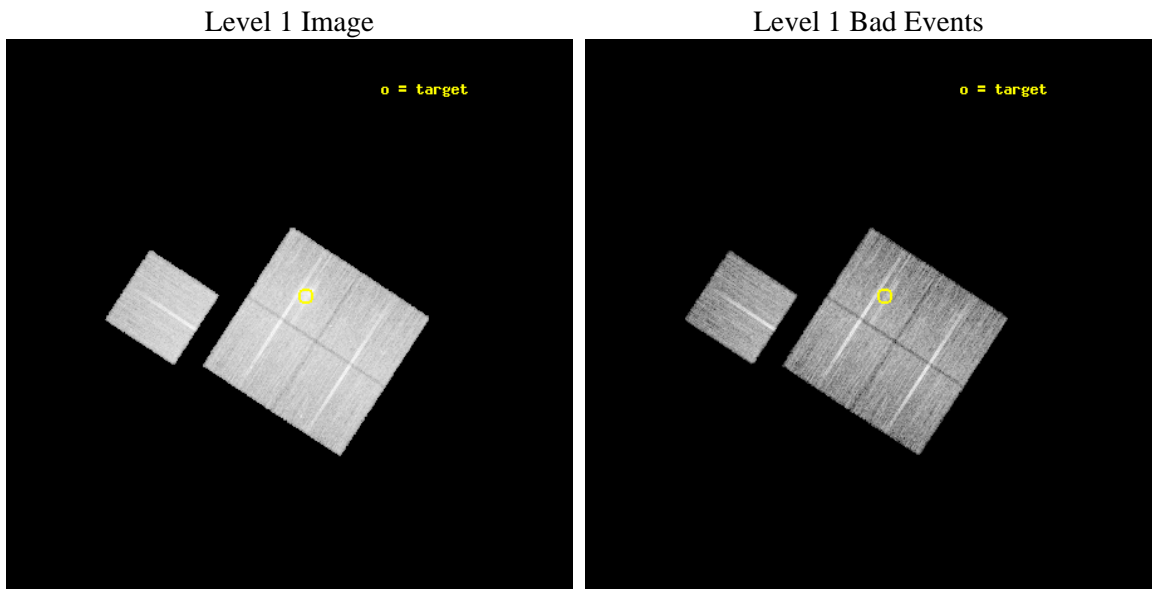




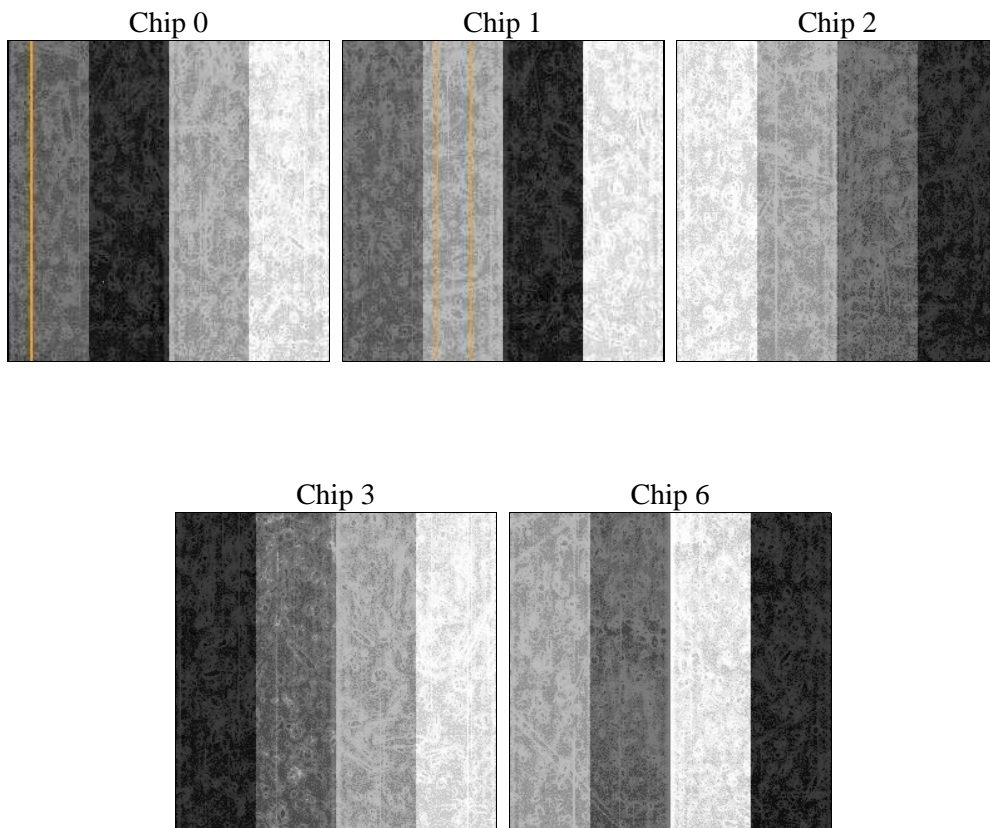
## 2 OBI

### 2.1 OBI

#### 2.1.1 Images



#### 2.1.2 Bias



### 2.1.3 Parameters

obi_num	0	Obi number	sched_exp_time	20000.000000	[s] Scheduled observation exposure time
ascdsver	8.4.3	Processing system revision	ontime	20057.000154257	Sum of GTIs [s]
caldbver	4.4.7	&#160	ontime0	20053.859164	Sum of GTIs [s]
date	2012-01-06T22:49:32	Date and time of file creation	ontime1	20057.000154257	Sum of GTIs [s]
revision	1	Processing version of data	ontime2	20057.000154257	Sum of GTIs [s]
			ontime3	20057.000154257	Sum of GTIs [s]
			ontime6	20057.000154257	Sum of GTIs [s]
			l1events	623457	Number of level 1 events

### 2.1.4 Events

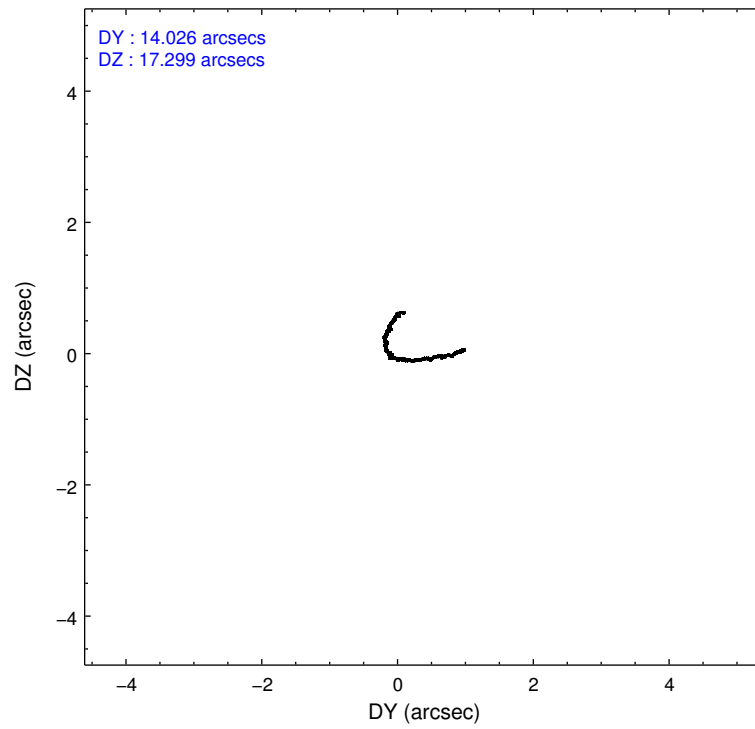
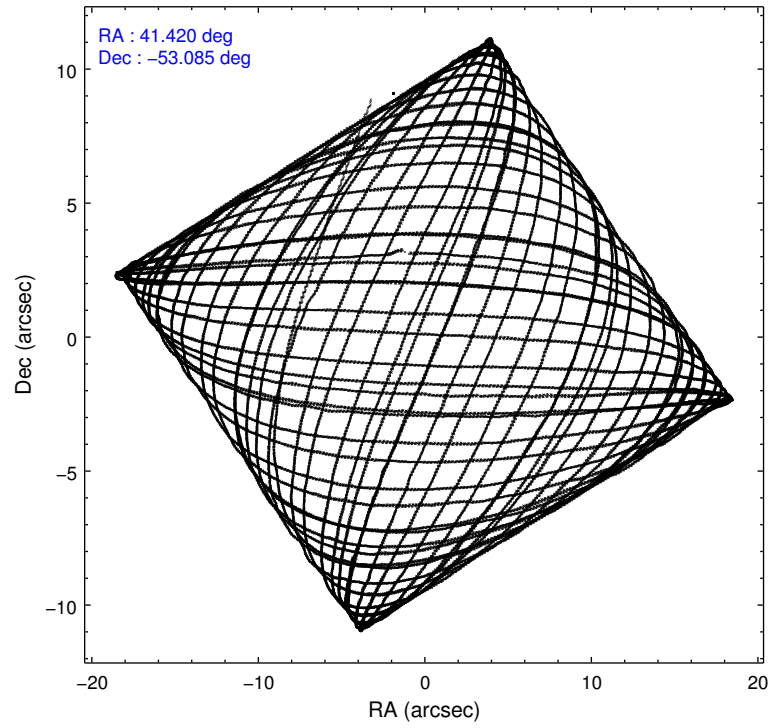
	ccd 0	ccd 1	ccd 2	ccd 3	ccd 6
level 1 events	118013	118075	129289	132840	125240
rejected events	102808	101480	115140	109710	110515
rejected %	87%	85%	89%	82%	88%

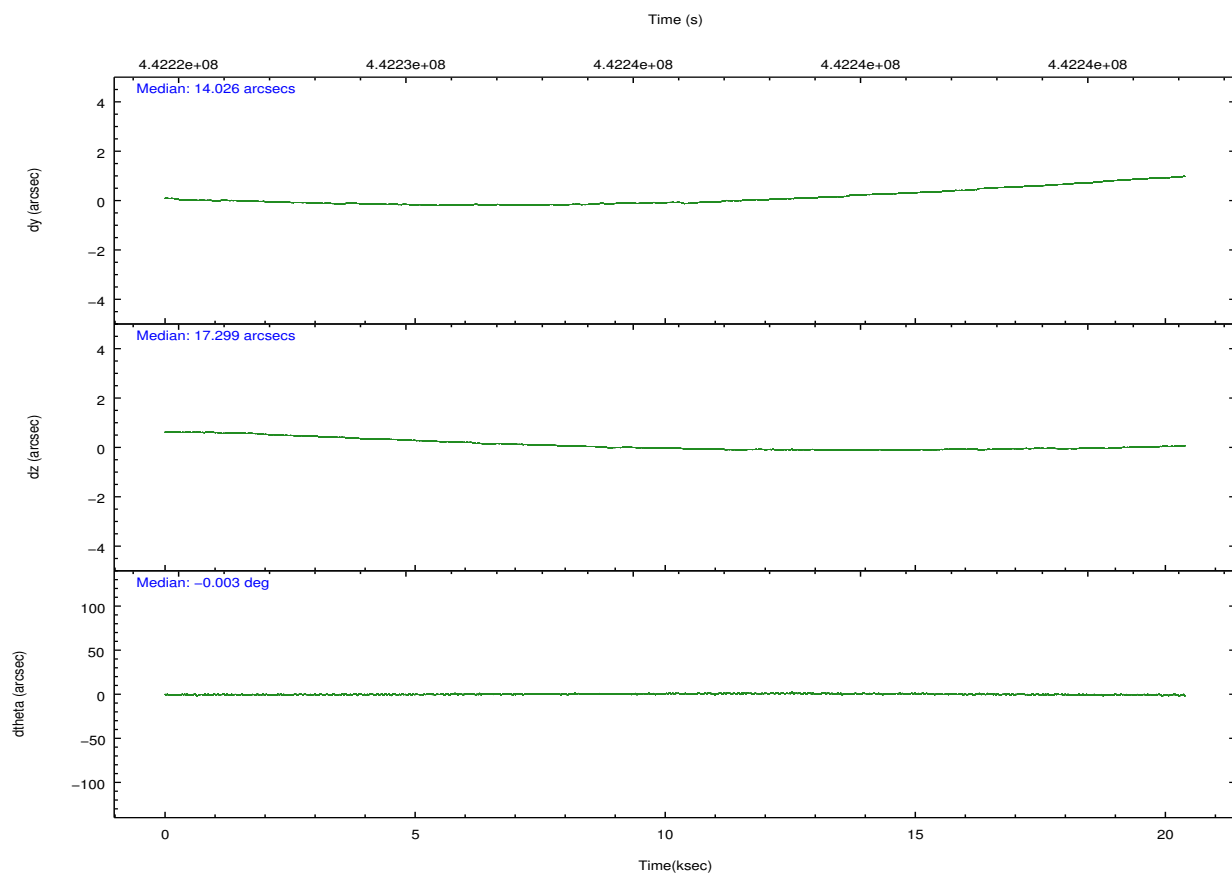
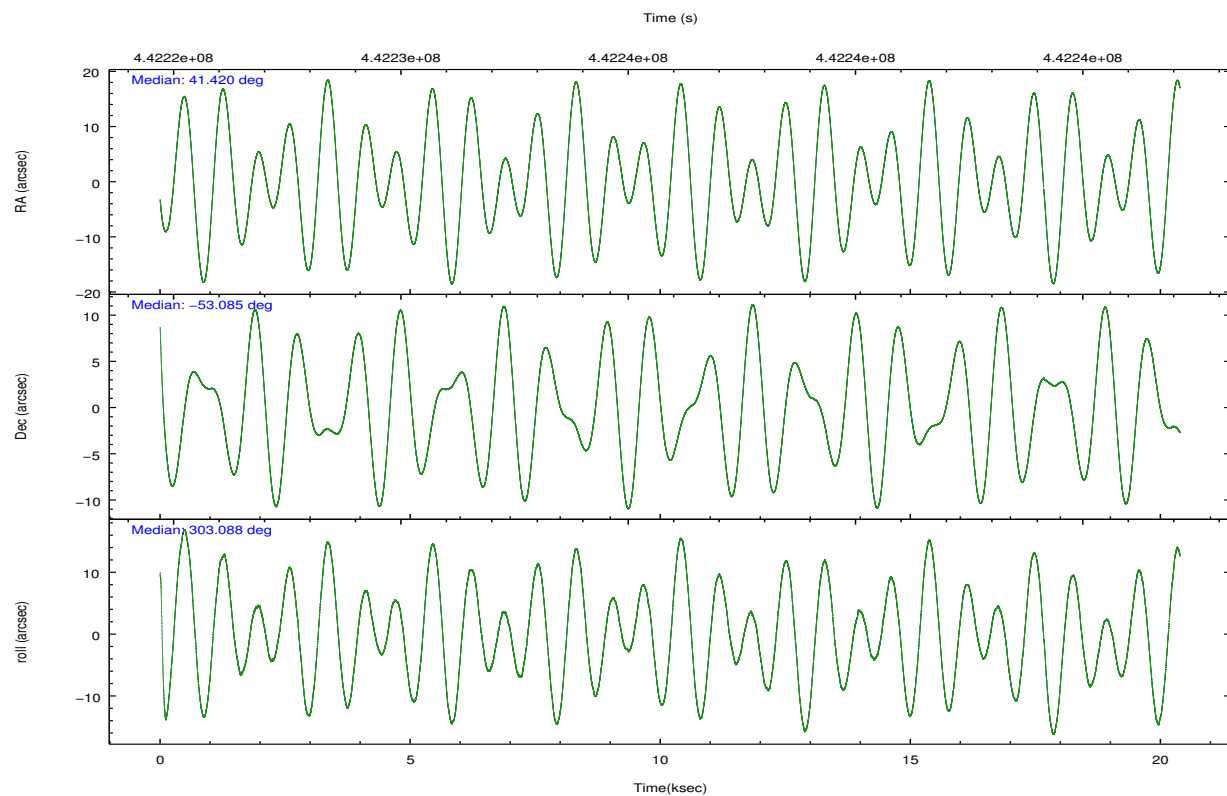
	ccd 0	ccd 1	ccd 2	ccd 3	ccd 6
grade 0 events	5469	6038	5078	12411	5049
	4%	5%	3%	9%	4%
grade 1 events	72	84	71	116	76
	0%	0%	0%	0%	0%
grade 2 events	3804	3931	3380	4053	3331
	3%	3%	2%	3%	2%
grade 3 events	1558	1628	1445	1772	1530
	1%	1%	1%	1%	1%
grade 4 events	1478	1612	1493	1739	1499
	1%	1%	1%	1%	1%
grade 5 events	5637	5937	5163	6357	5857
	4%	5%	3%	4%	4%
grade 6 events	2898	3387	2754	3158	3317
	2%	2%	2%	2%	2%
grade 7 events	97097	95458	109905	103234	104581
	82%	80%	85%	77%	83%

## 2.2 Compared Parameters

Parameter	Planned	Actual	Parameter	Planned	Actual
Instrument	ACIS	ACIS	Obspar format version number	7	7
Detector	ACIS-01236	ACIS-01236	Obspar file type	PREDICTED	ACTUAL
Grating	NONE	NONE	Obspar update status	NONE	UPDATED
Data mode	VFAINT	VFAINT	CCD I0 on	Y	Y
Observation mode	POINTING	POINTING	CCD I1 on	Y	Y
[deg] Pointing RA	41.379529	41.42043662325131	CCD I2 on	Y	Y
[deg] Pointing Dec	-53.072683	-53.08504616077964	CCD I3 on	Y	Y
[deg] Pointing Roll	302.854584	303.095986369255	CCD S0 on	N	N
[mm] SIM focus pos	-0.782348	-0.7809083437167272	CCD S1 on	N	N
[mm] SIM defocus	0	0.001439871863259334	CCD S2 on	O1	Y
[mm] SIM translation stage pos	-225.792463	-225.785514080088	CCD S3 on	N	N
[mm] SIM translation stage offset	-7.8	-7.806938922841681	CCD S4 on	N	N
[s] Observation start time (MET)	442226119.184000	442225088.38272	CCD S5 on	N	N
Observation start date	2012-01-06T08:34:13	2012-01-06T08:18:08	Number of optional ACIS chips dropped	0	0
[s] Observation end time (MET)	442246119.184000	442247609.17141	On-chip summing requested	N	N
Observation end date	2012-01-06T14:07:33	2012-01-06T14:33:29	Subarray requested	NONE	NONE
Read mode	TIMED	TIMED	Alternating exposures requested	N	N
			[s] Primary exposure time	0.000000	3.1

## 2.3 Aspect



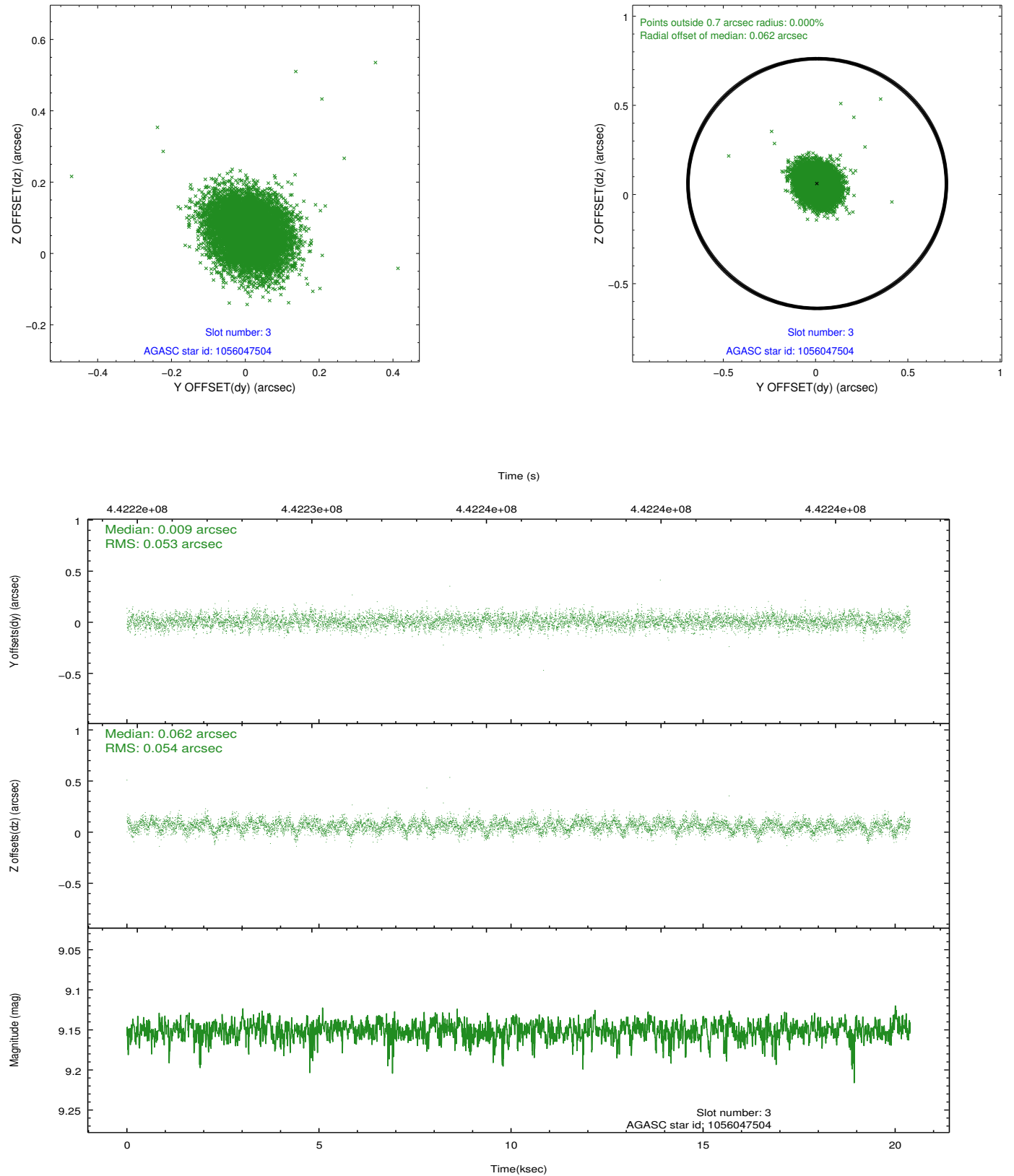


### Slot Statistics

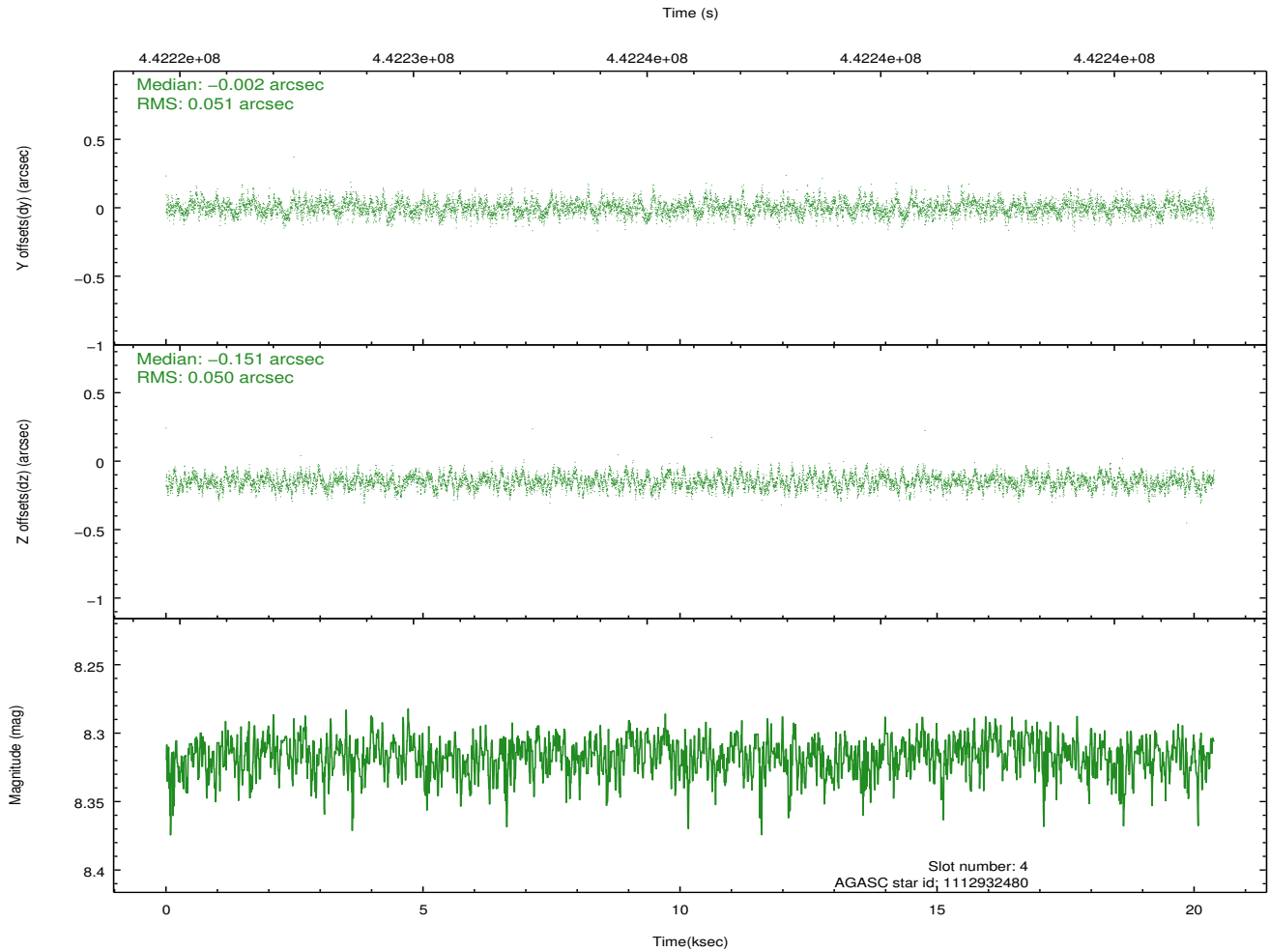
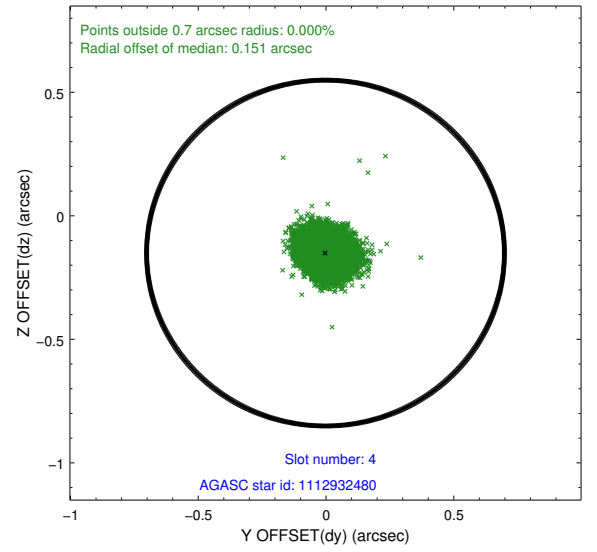
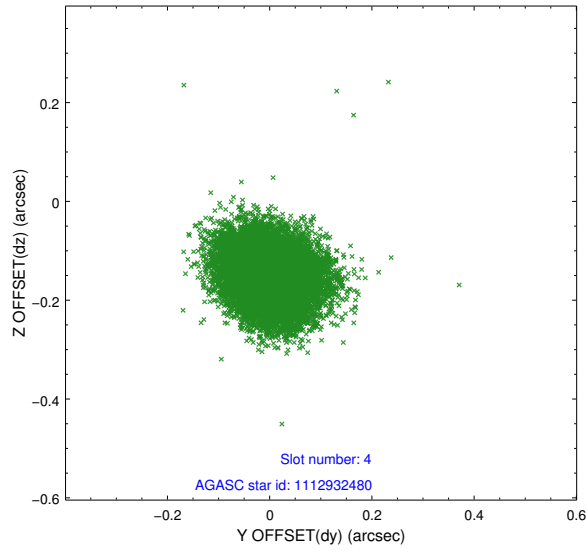
slot	status	id	mag	n_pts	med_dy	med_dz	dr1	dr2	ra	dec	mean_y	mean_z
0	FID	ACIS-I-1	7.02	4973	0.113	-0.056	0.010	0.016	0.000000	0.000000	925.31	-1001.38
1	FID	ACIS-I-5	7.02	4973	-0.297	0.093	0.010	0.016	0.000000	0.000000	-1823.15	896.08
2	FID	ACIS-I-6	7.03	4973	0.093	0.034	0.010	0.017	0.000000	0.000000	390.58	1540.78
3	GUIDE	1056047504	9.15	9941	0.009	0.062	0.080	0.129	41.496916	-52.433184	-1793.95	1466.01
4	GUIDE	1112932480	8.32	9943	-0.002	-0.151	0.076	0.120	41.121788	-52.787610	-1165.64	84.79
5	GUIDE	1112936088	7.47	9947	-0.036	0.024	0.067	0.105	40.359428	-53.320074	-428.51	-2333.87
6	GUIDE	1112937160	7.88	9943	0.015	0.031	0.066	0.107	40.691929	-52.972857	-1103.87	-1061.20
7	GUIDE	1112939176	8.80	9940	0.011	0.032	0.086	0.137	41.725683	-53.516285	1745.37	-244.28

## 2.4 Star Slots

### 2.4.1 Slot 3

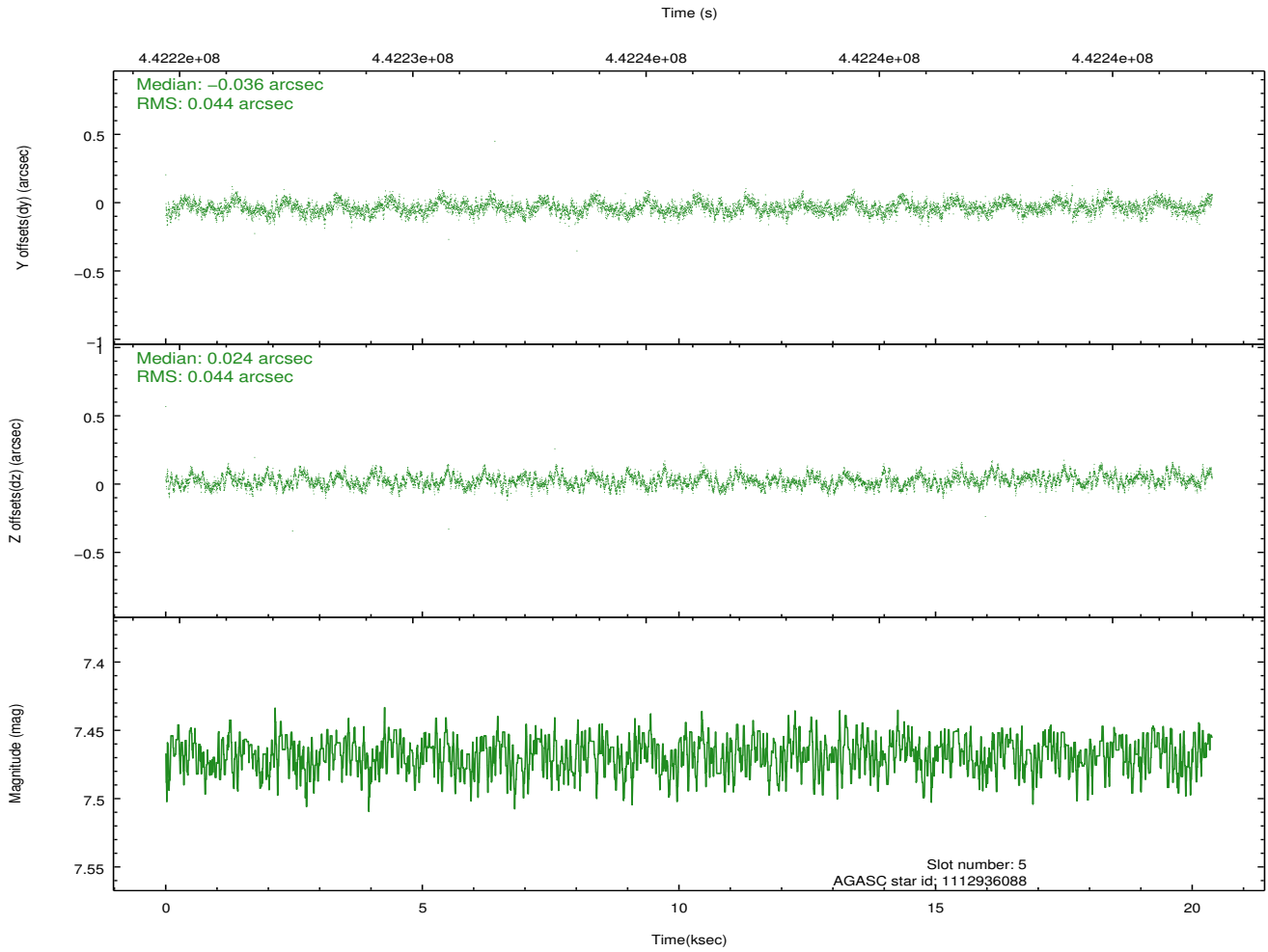
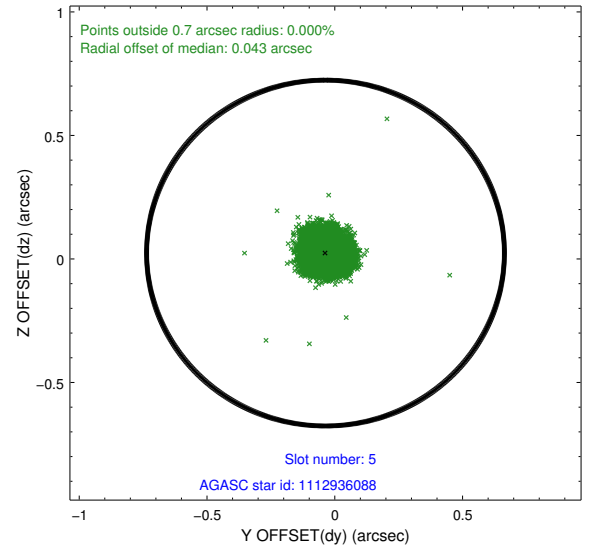
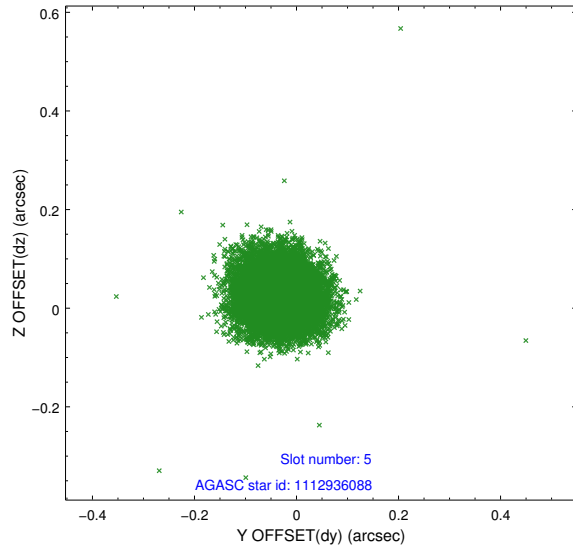


## 2.4.2 Slot 4

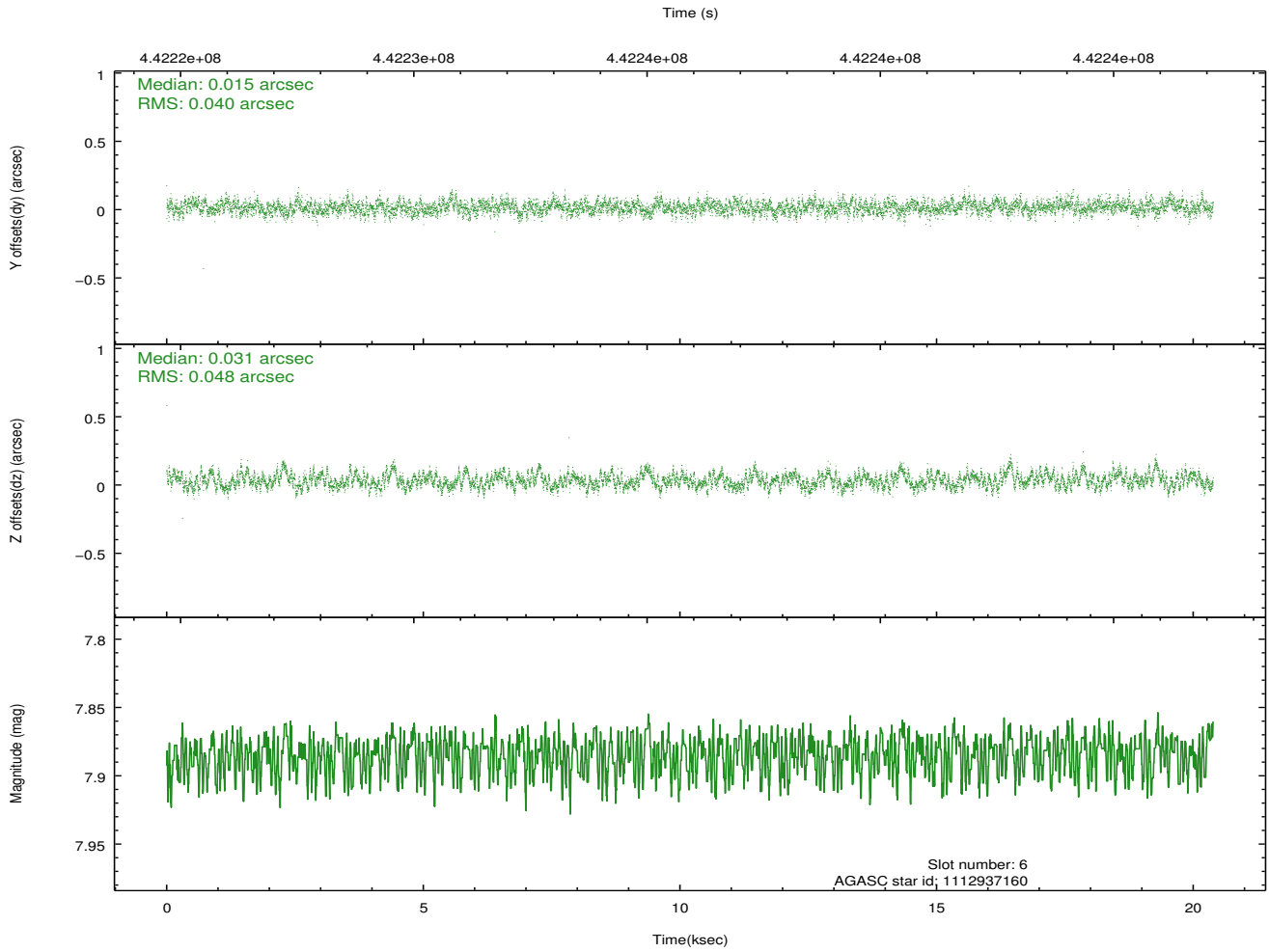
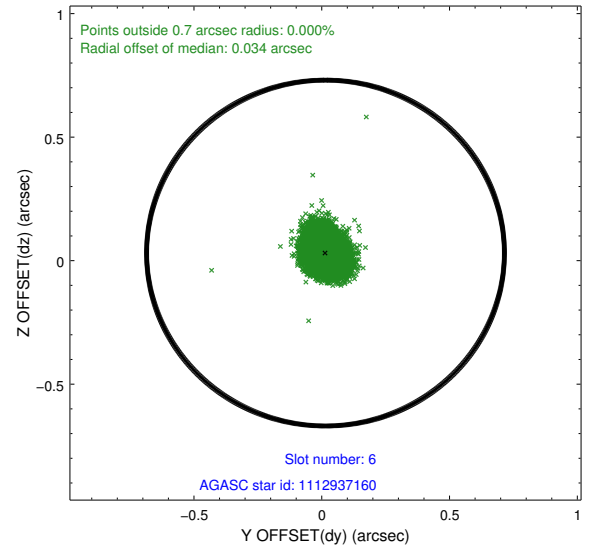
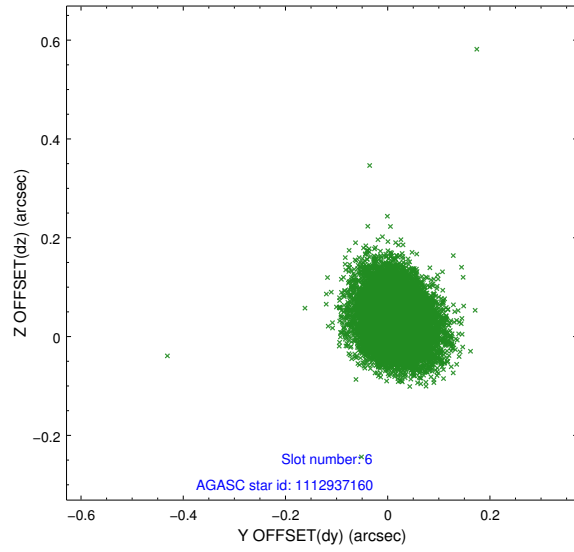




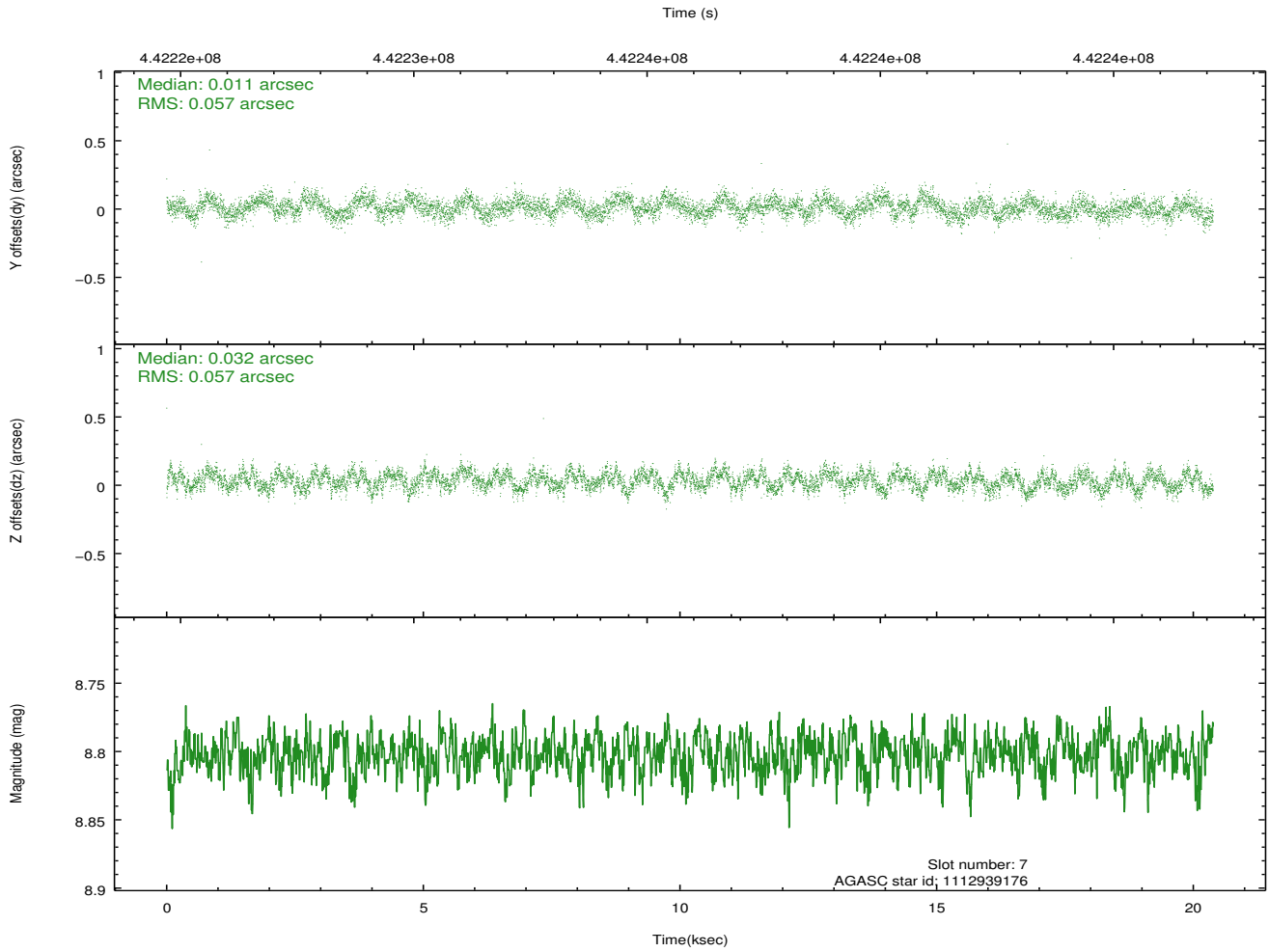
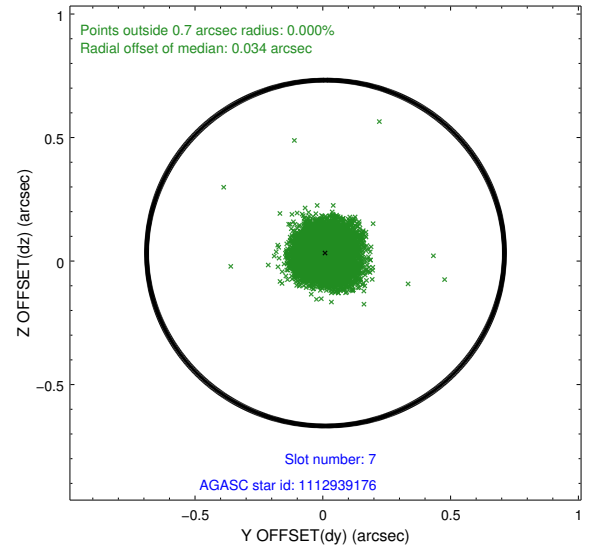
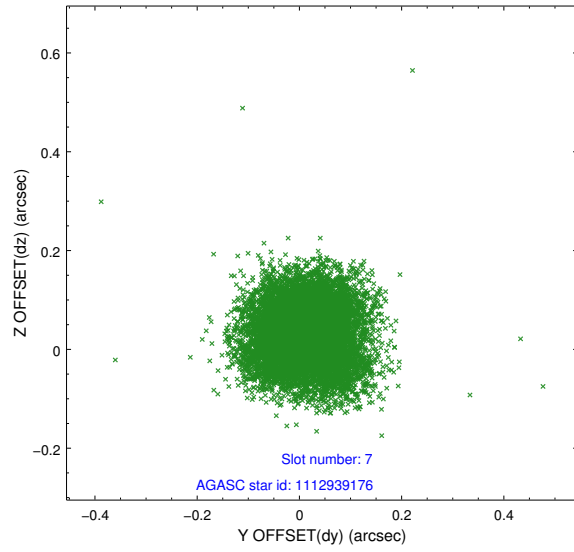
### 2.4.3 Slot 5



## 2.4.4 Slot 6

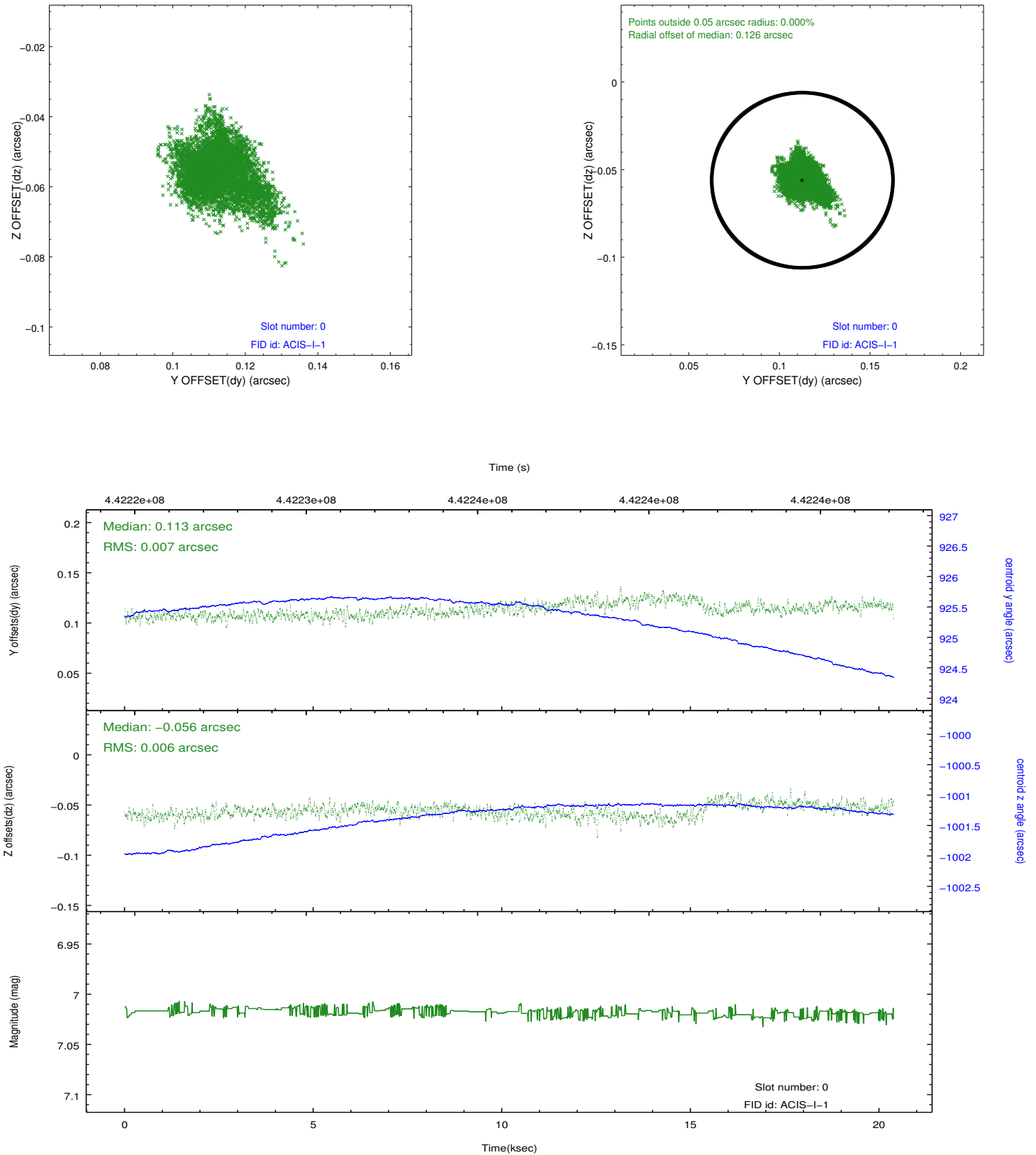


## 2.4.5 Slot 7

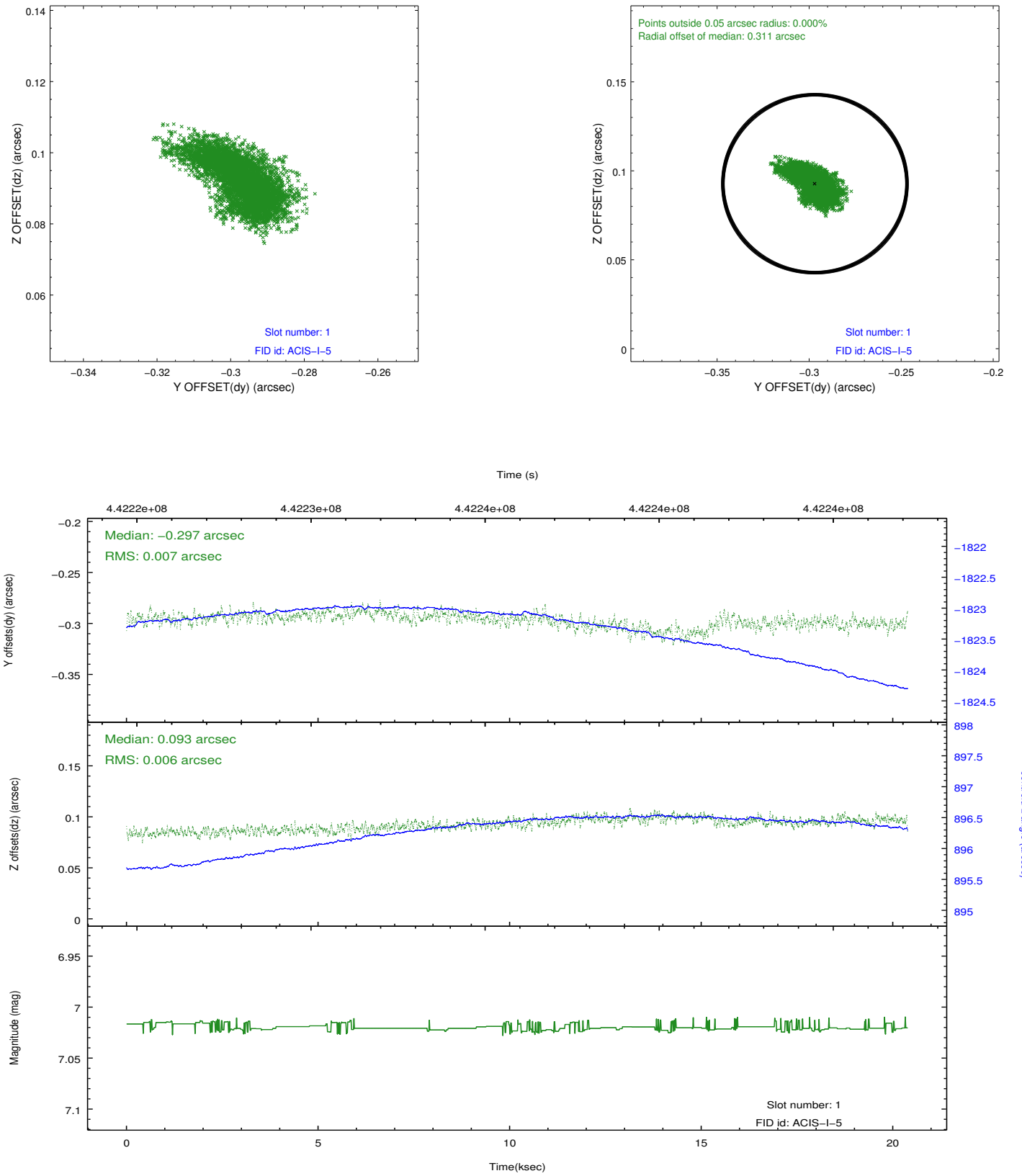


## 2.5 FID Slots

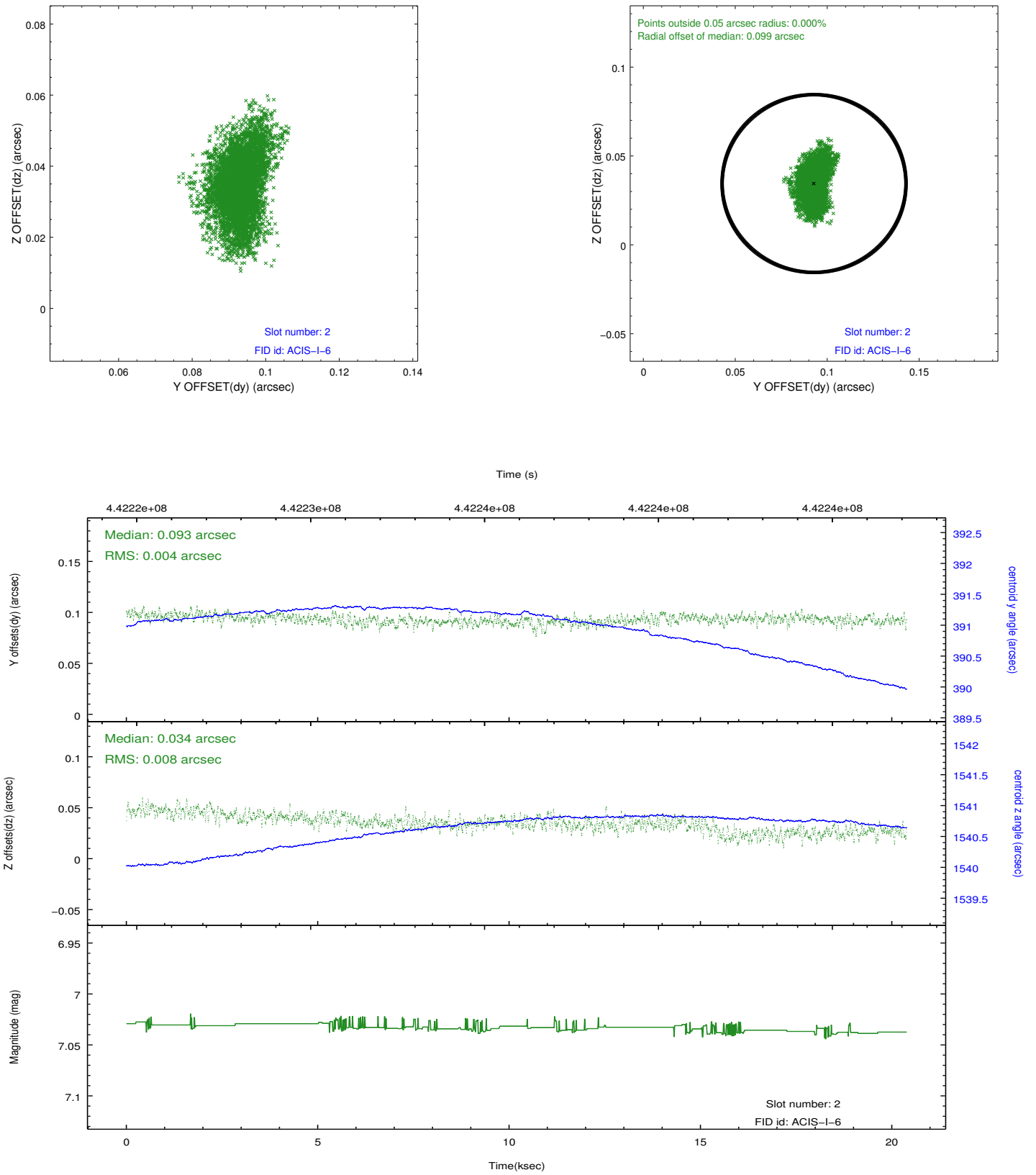
### 2.5.1 Slot 0



## 2.5.2 Slot 1



### 2.5.3 Slot 2



## A Summary

### A.1 Status

V&V Scientist	Beth Sundheim
V&V Date (YYYY-MM-DD)	2012.01.08
V&V Edition	1
V&V Disposition and Status	OK
V&V Charge Time	20.057000154257

### A.2 Comments