

V&V Reference Report

L2 ASCDS Version : 8.4.5

Observation 12257 - L2 Version 2
Chandra X-Ray Center

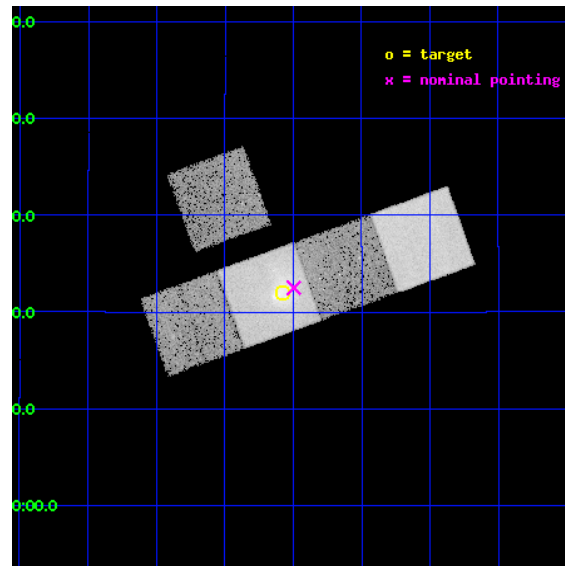
L2 Processing Date : Jul 2 2012

Contents

1	Front	2
2	OBI	3
2.1	OBI	3
2.1.1	Images	3
2.1.2	Bias	3
2.1.3	Parameters	4
2.1.4	Events	4
2.2	Compared Parameters	5
2.3	Aspect	6
2.4	Star Slots	9
2.4.1	Slot 3	9
2.4.2	Slot 4	10
2.4.3	Slot 5	11
2.4.4	Slot 6	12
2.4.5	Slot 7	13
2.5	FID Slots	14
2.5.1	Slot 0	14
2.5.2	Slot 1	15
2.5.3	Slot 2	16
A	Summary	17
A.1	Status	17
A.2	Comments	17

1 Front

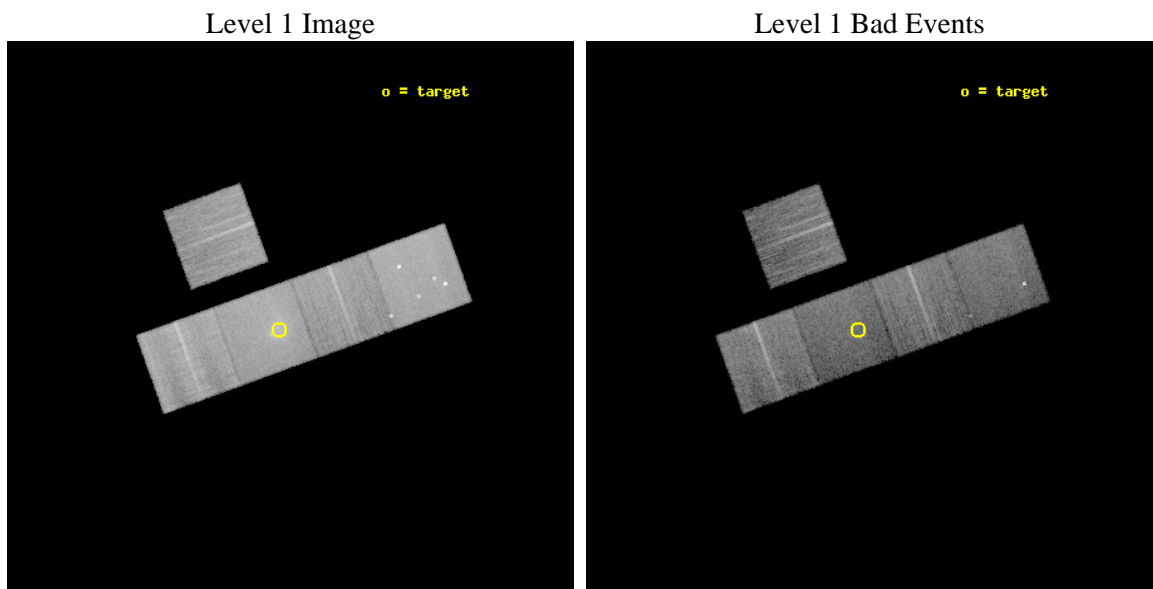
seq_num	800976	Sequence number
obs_id	12257	Observation id
title	Abell 2443: An Extreme Relic as a Merger Signpost?	Proposal title
observer	Dr Tracy Clarke	Principal investigator
object	Abell 2443	Source name
dtcycle	0	
cycle	P	events from which exps? Prim/Second/Both
ra_targ	336.51875	Observer's specified target RA [deg]
dec_targ	17.3665	Observer's specified target Dec [deg]
ra_nom	336.4988097242	Nominal RA [deg]
dec_nom	17.375110886609	Nominal Dec [deg]
roll_nom	160.16256910623	Nominal Roll [deg]
revision	2	Processing version of data
ontime	15232.458598256	Sum of GTIs [s]
livetime	15033.435312697	Livetime [s]
ontime3	15232.335478246	Sum of GTIs [s]
ontime5	15232.417558253	Sum of GTIs [s]
ontime6	15232.37651825	Sum of GTIs [s]
ontime7	15232.458598256	Sum of GTIs [s]
ontime8	15229.153537333	Sum of GTIs [s]
l2events	197816	Number of level 2 events



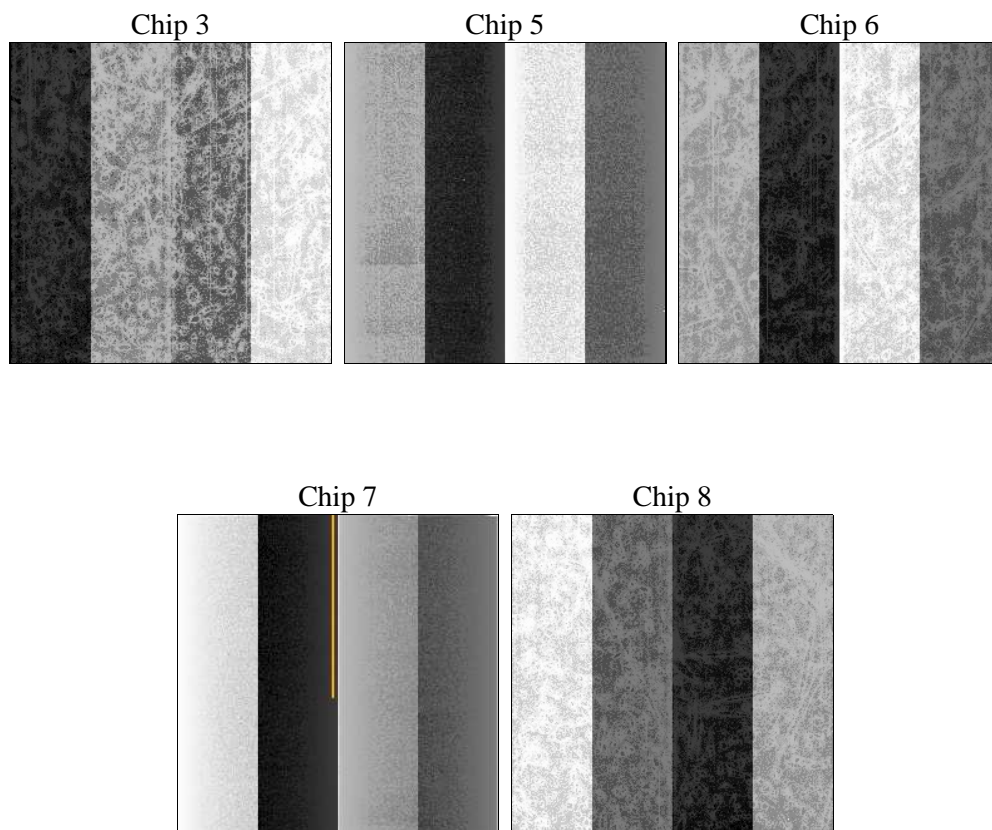
2 OBI

2.1 OBI

2.1.1 Images



2.1.2 Bias



2.1.3 Parameters

obi_num	0	Obi number	sched_exp_time	15194.181000	[s] Scheduled observation exposure time
ascdsver	8.4.5	Processing system revision	ontime	15232.458598256	Sum of GTIs [s]
caldbver	4.5.0	 	ontime3	15232.335478246	Sum of GTIs [s]
date	2012-07-02T05:31:57	Date and time of file creation	ontime5	15232.417558253	Sum of GTIs [s]
revision	2	Processing version of data	ontime6	15232.37651825	Sum of GTIs [s]
			ontime7	15232.458598256	Sum of GTIs [s]
			ontime8	15229.153537333	Sum of GTIs [s]
			l1events	725132	Number of level 1 events

2.1.4 Events

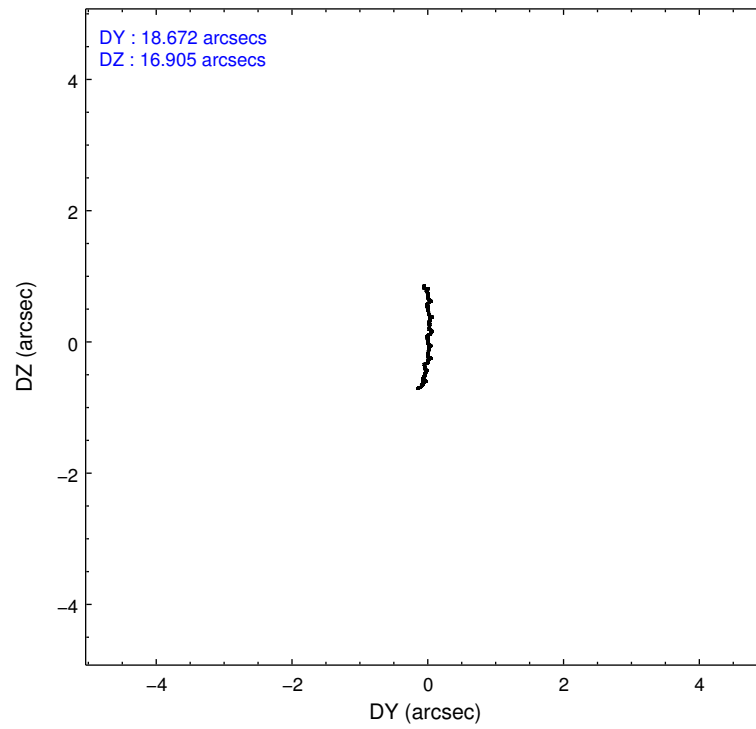
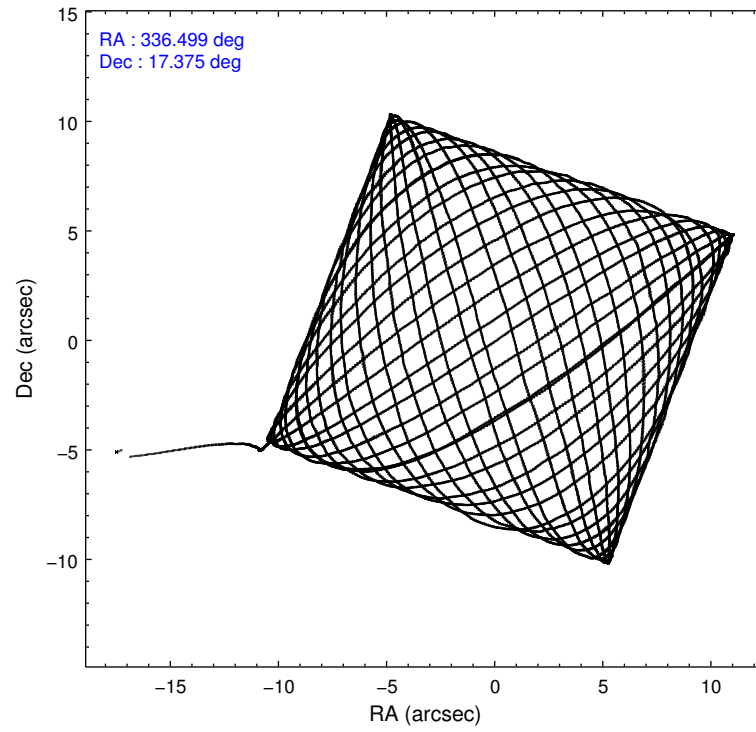
	ccd 3	ccd 5	ccd 6	ccd 7	ccd 8
level 1 events	111842	182222	119384	159985	151699
rejected events	99978	90310	105269	77456	109936
rejected %	89%	49%	88%	48%	72%

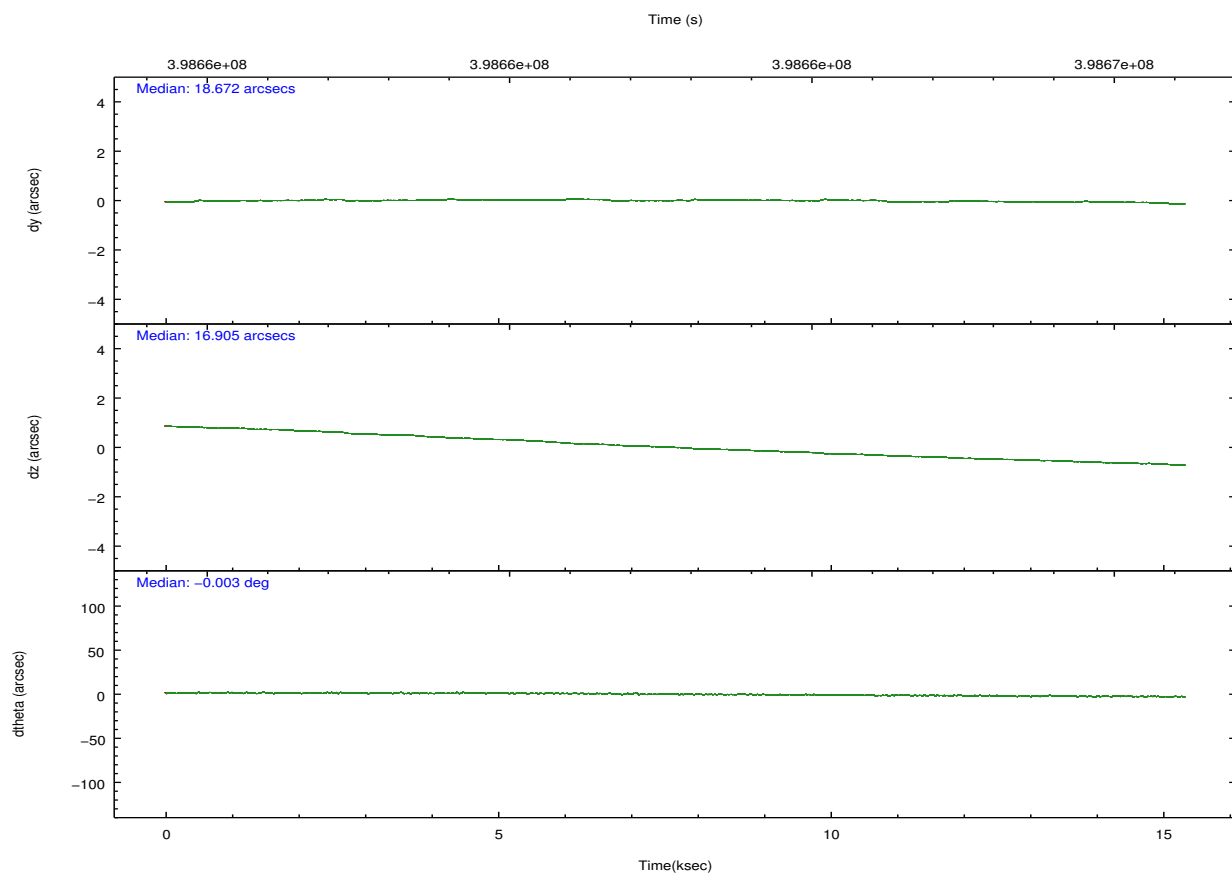
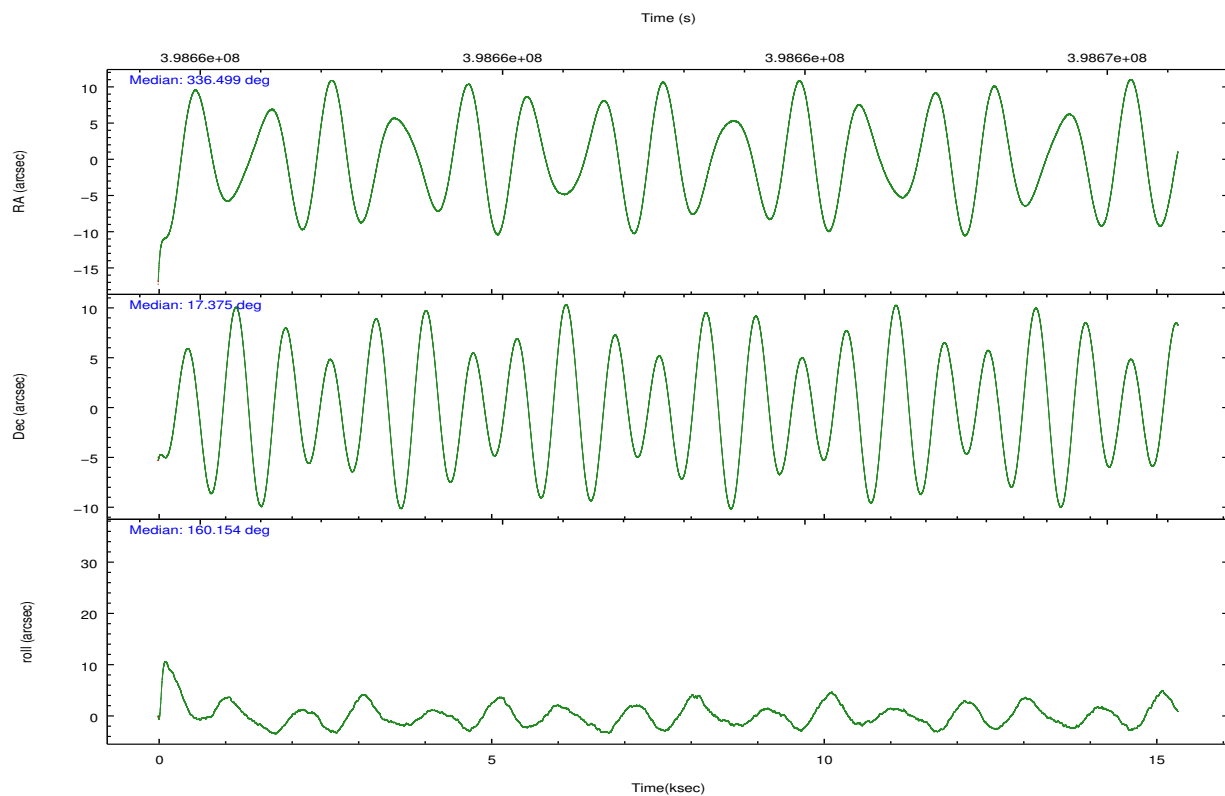
	ccd 3	ccd 5	ccd 6	ccd 7	ccd 8
grade 0 events	4163	12867	5494	11456	12916
	3%	7%	4%	7%	8%
grade 1 events	58	499	75	173	136
	0%	0%	0%	0%	0%
grade 2 events	2591	26949	3140	18329	9426
	2%	14%	2%	11%	6%
grade 3 events	1266	3443	1324	7756	4739
	1%	1%	1%	4%	3%
grade 4 events	1306	3343	1365	7748	4325
	1%	1%	1%	4%	2%
grade 5 events	4974	13839	5156	14933	7589
	4%	7%	4%	9%	5%
grade 6 events	2541	45329	2794	37252	10363
	2%	24%	2%	23%	6%
grade 7 events	94943	75953	100036	62338	102205
	84%	41%	83%	38%	67%

2.2 Compared Parameters

Parameter	Planned	Actual	Parameter	Planned	Actual
Instrument	ACIS	ACIS	Obspar format version number	7	7
Detector	ACIS-35678	ACIS-35678	Obspar file type	PREDICTED	ACTUAL
Grating	NONE	NONE	Obspar update status	NONE	UPDATED
Data mode	VFAINT	VFAINT	Number of optional ACIS chips dropped	0	0
Observation mode	POINTING	POINTING	On-chip summing requested	N	N
[deg] Pointing RA	336.526990	336.4988097241974	Subarray requested	NONE	NONE
[deg] Pointing Dec	17.380313	17.37511088660913	Alternating exposures requested	N	N
[deg] Pointing Roll	159.997538	160.1625691062261	[s] Primary exposure time	0.000000	3.1
[mm] SIM focus pos	-0.684267	-0.6828225247311905			
[mm] SIM defocus	0	0.001444936568705701			
[mm] SIM translation stage pos	-190.132523	-190.1400660498719			
[mm] SIM translation stage offset	0	0.00754346686406393			
[s] Observation start time (MET)	398655194.184000	398653943.3897			
Observation start date	2010-08-20T01:32:08	2010-08-20T01:12:23			
[s] Observation end time (MET)	398670389.184000	398670614.50305			
Observation end date	2010-08-20T05:45:23	2010-08-20T05:50:14			
Read mode	TIMED	TIMED			

2.3 Aspect



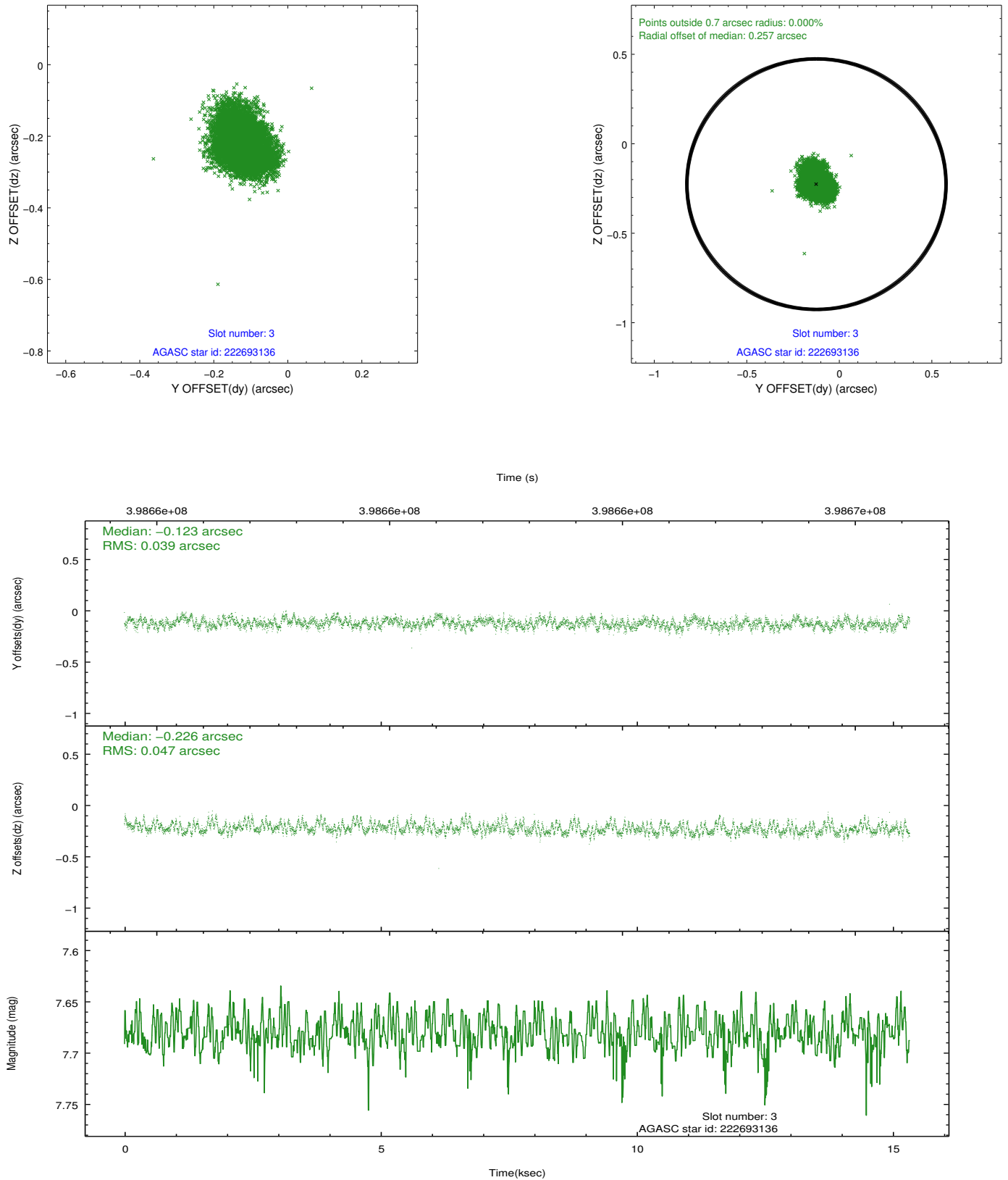


Slot Statistics

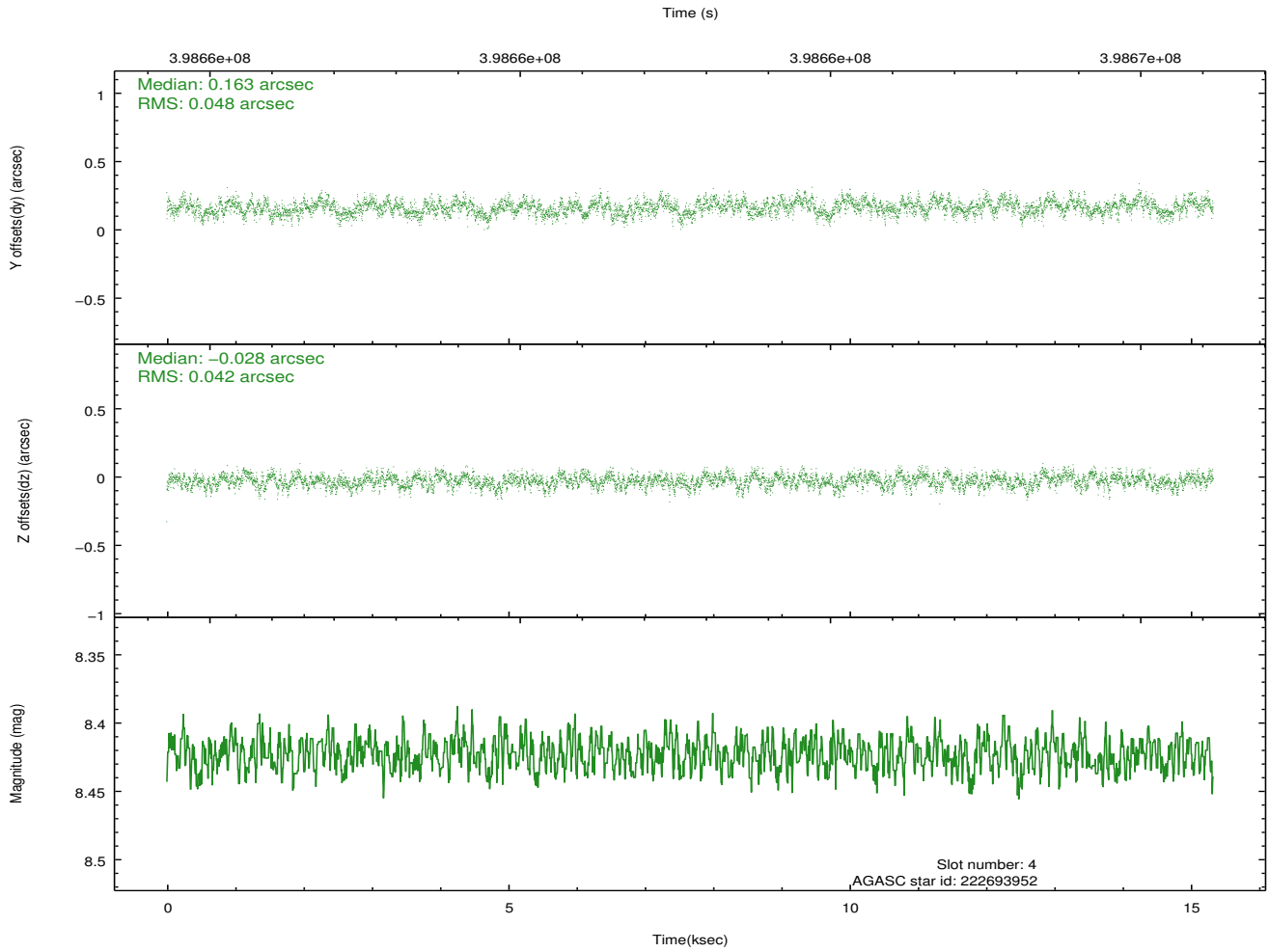
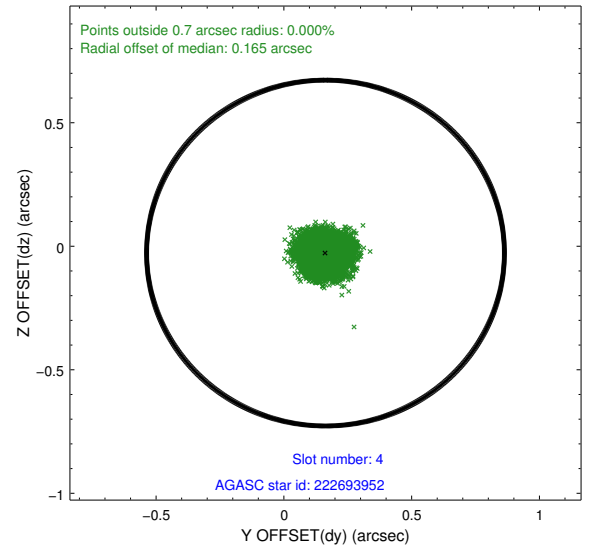
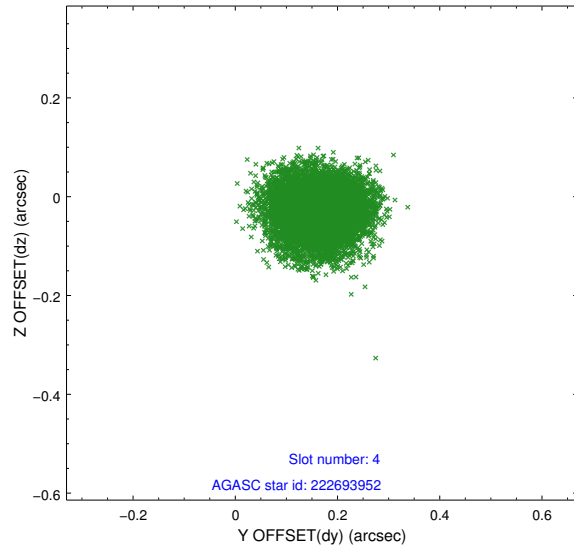
slot	status	id	mag	n_pts	med_dy	med_dz	dr1	dr2	ra	dec	mean_y	mean_z
0	FID	ACIS-S-2	6.89	3739	-0.068	-0.021	0.021	0.028	0.000000	0.000000	-771.83	-1738.38
1	FID	ACIS-S-4	6.96	3740	0.215	0.040	0.006	0.012	0.000000	0.000000	2141.63	169.81
2	FID	ACIS-S-5	6.99	3739	-0.177	-0.009	0.019	0.026	0.000000	0.000000	-1824.37	163.84
3	GUIDE	222693136	7.68	7479	-0.123	-0.226	0.065	0.106	336.053572	17.017460	1084.83	1783.09
4	GUIDE	222693952	8.42	7479	0.163	-0.028	0.069	0.109	336.819255	17.077432	-1317.70	680.08
5	GUIDE	222696704	8.44	7478	-0.035	0.175	0.082	0.125	336.227191	17.763962	1438.11	-946.78
6	GUIDE	222698248	8.41	7471	-0.018	0.182	0.059	0.097	336.733633	17.523482	-489.84	-727.30
7	GUIDE	222175312	8.25	7474	0.015	-0.103	0.077	0.124	336.318853	16.780824	-64.31	2272.84

2.4 Star Slots

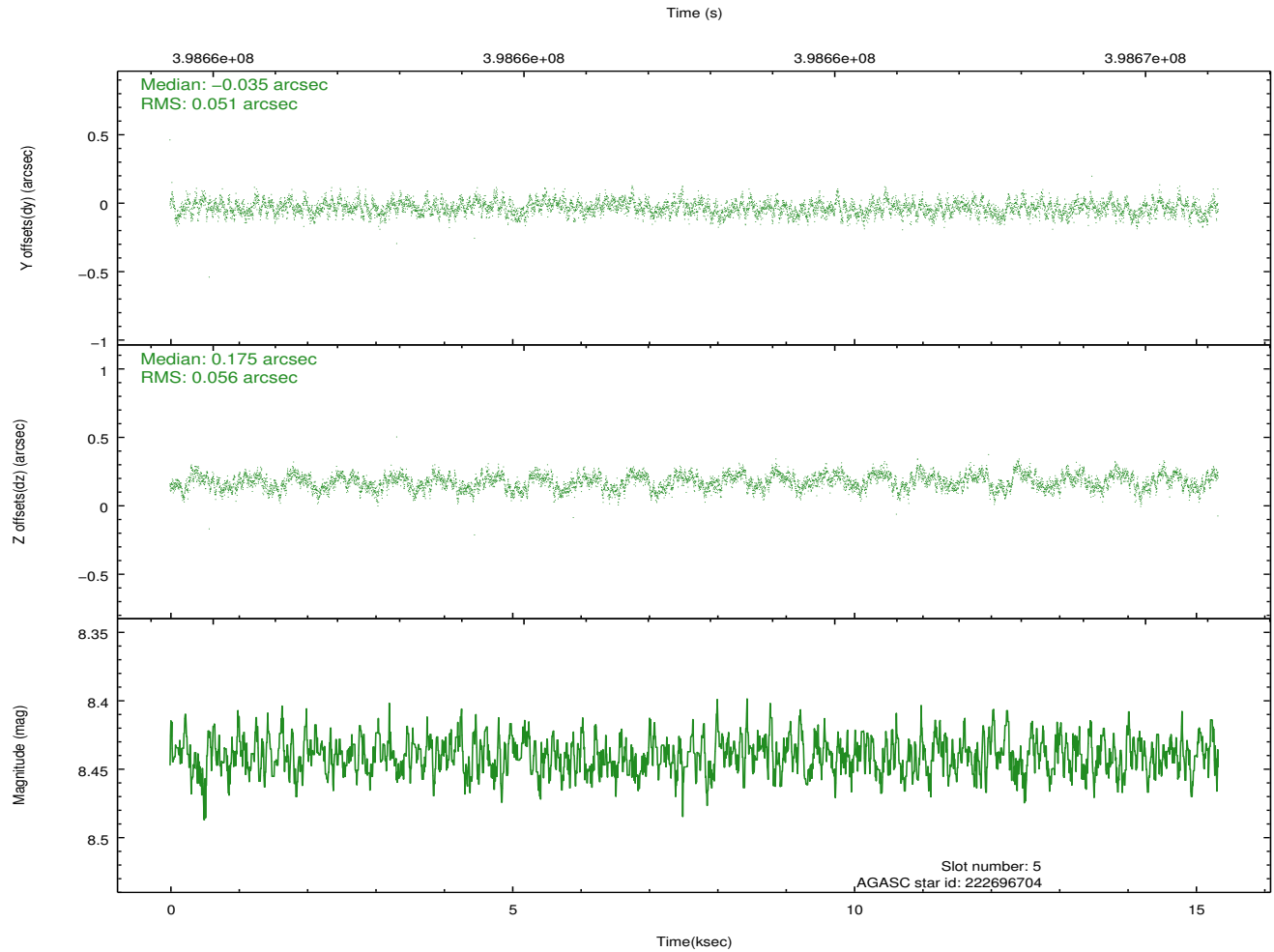
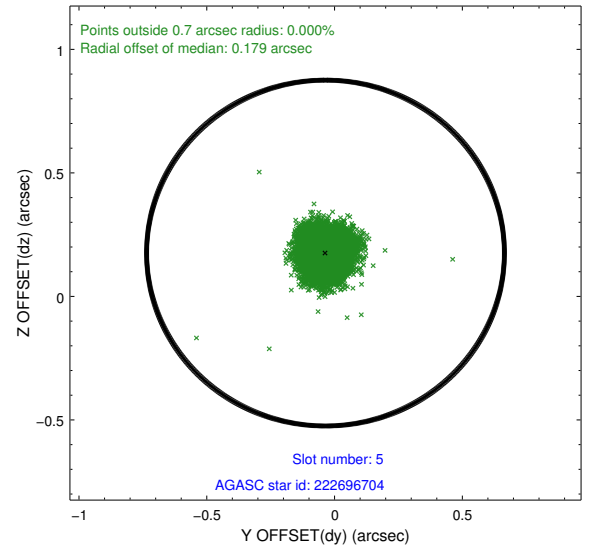
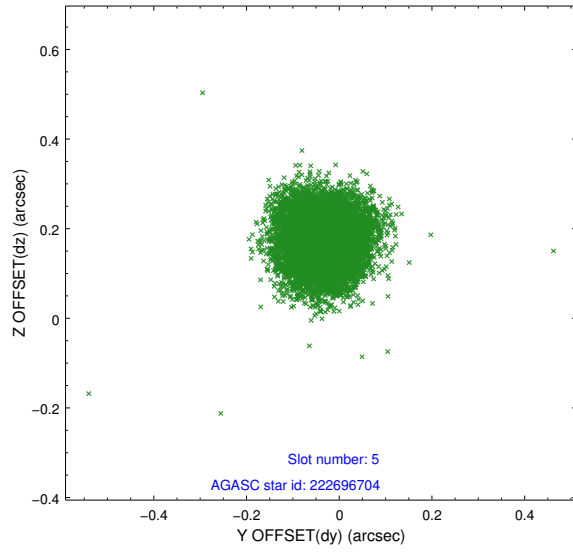
2.4.1 Slot 3



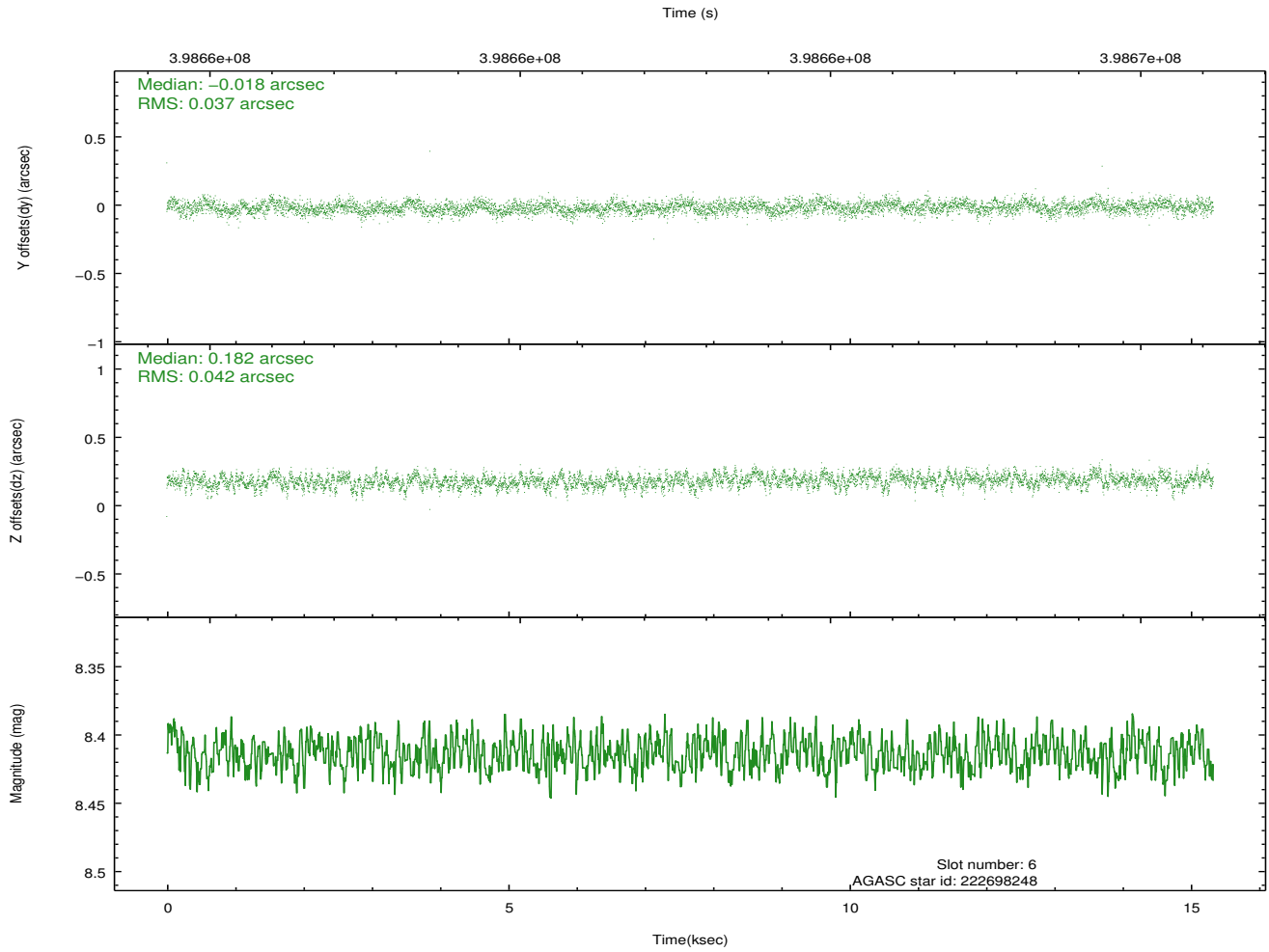
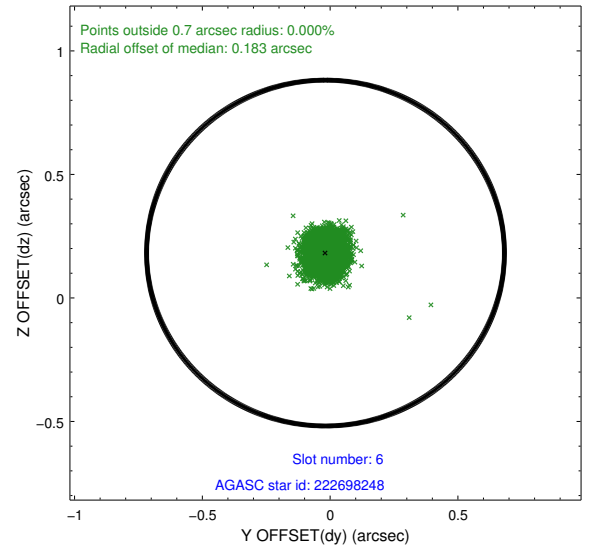
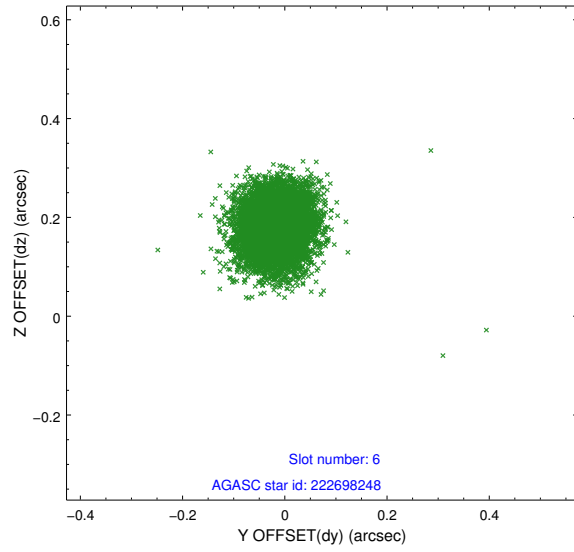
2.4.2 Slot 4



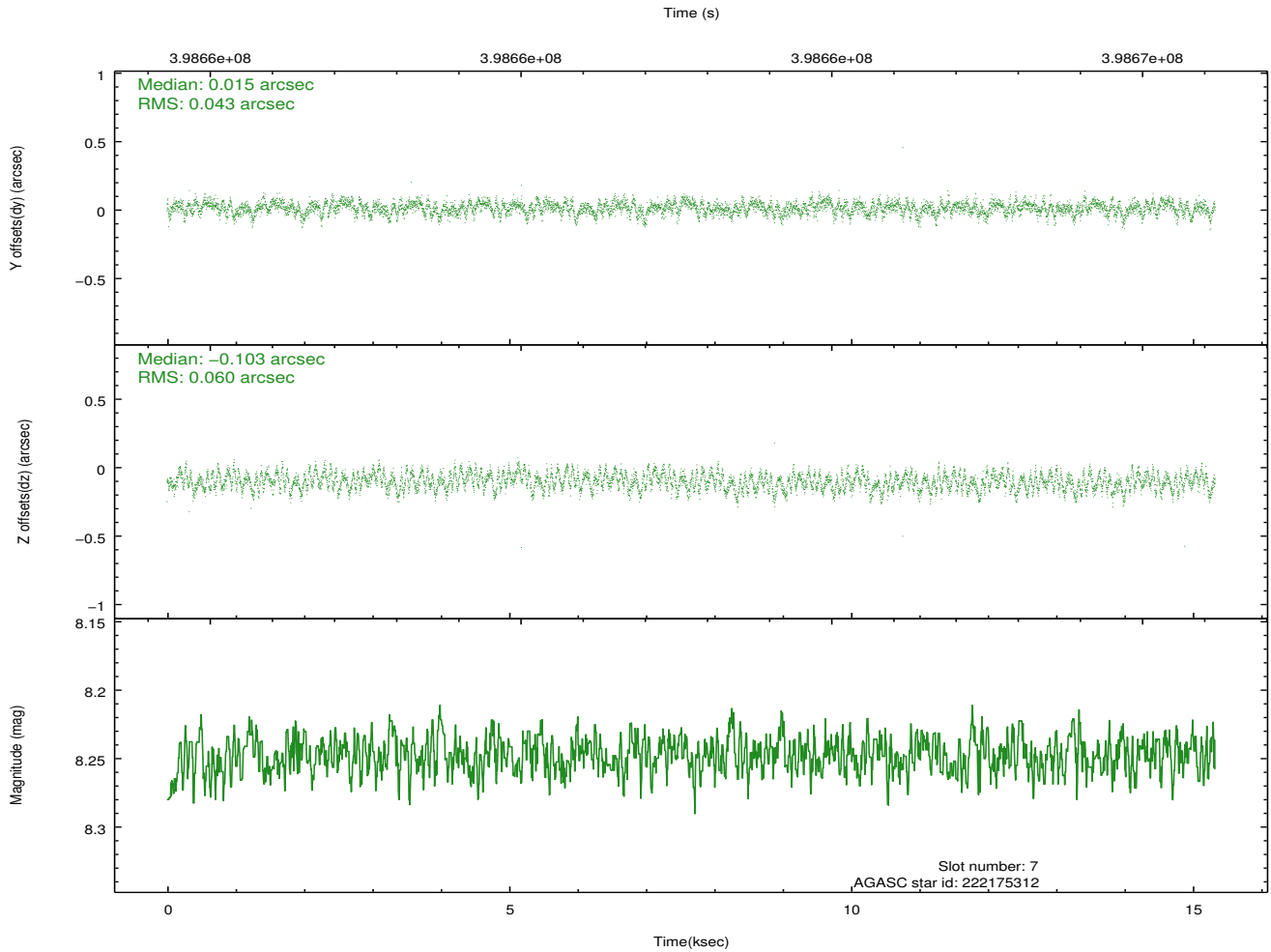
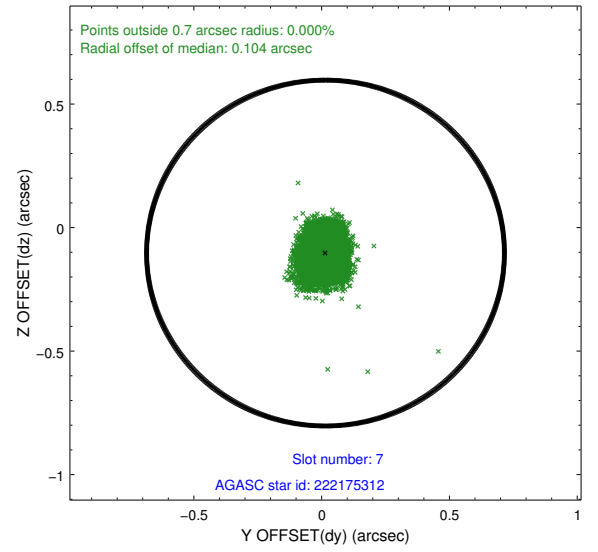
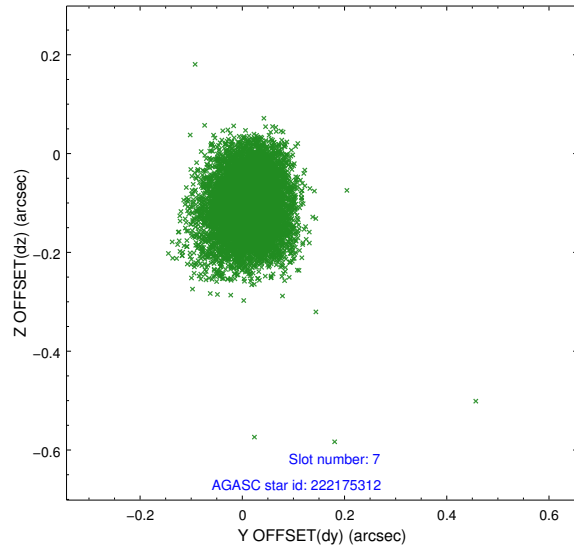
2.4.3 Slot 5



2.4.4 Slot 6

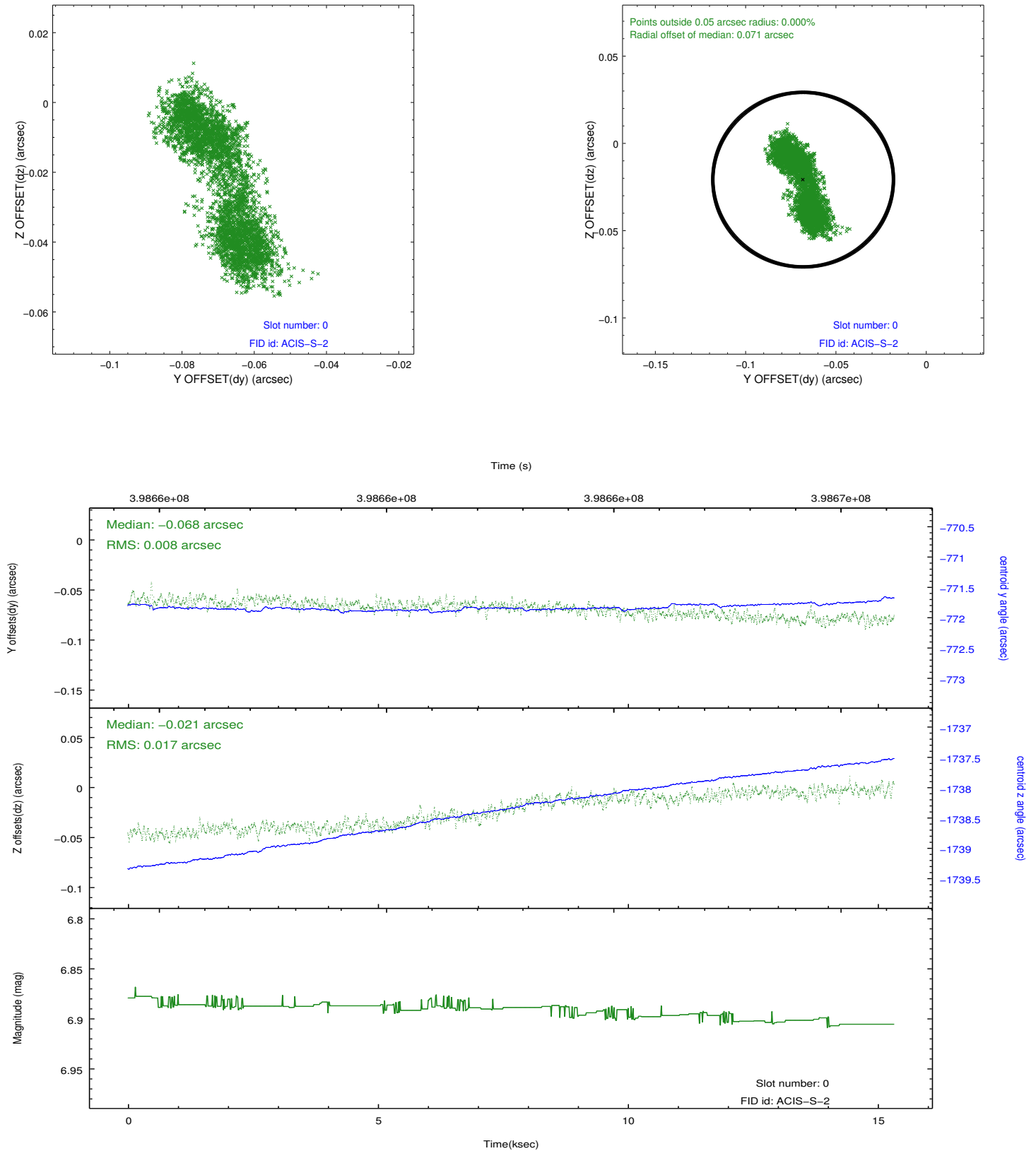


2.4.5 Slot 7

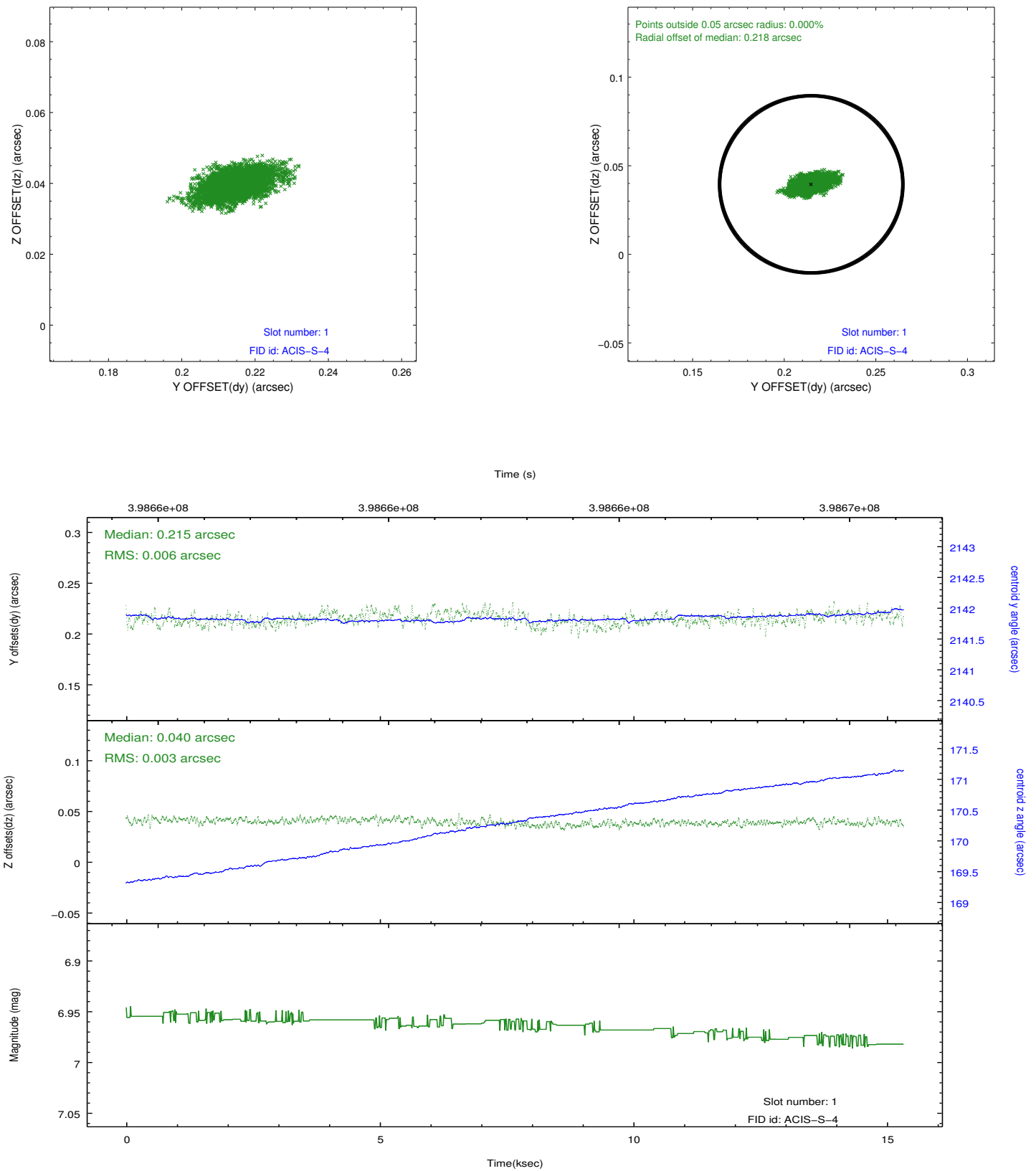


2.5 FID Slots

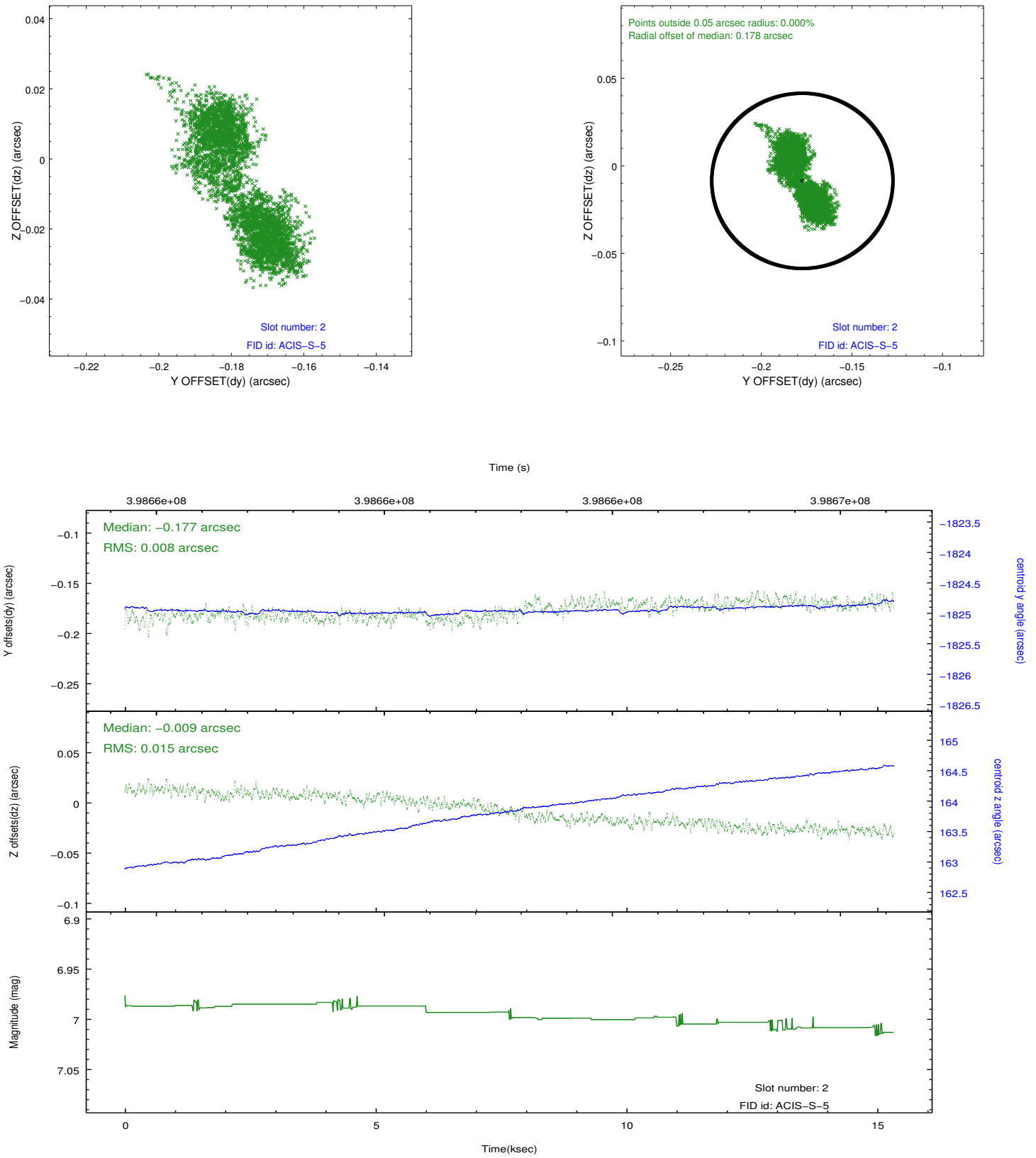
2.5.1 Slot 0



2.5.2 Slot 1



2.5.3 Slot 2



A Summary

A.1 Status

V&V Scientist	Jen Lauer
V&V Date (YYYY-MM-DD)	2012.07.10
V&V Edition	1
V&V Disposition and Status	OK
V&V Charge Time	15.232458599508

A.2 Comments