

V&V Reference Report

L2 ASCDS Version : 8.4.5

Observation 12253 - L2 Version 2
Chandra X-Ray Center

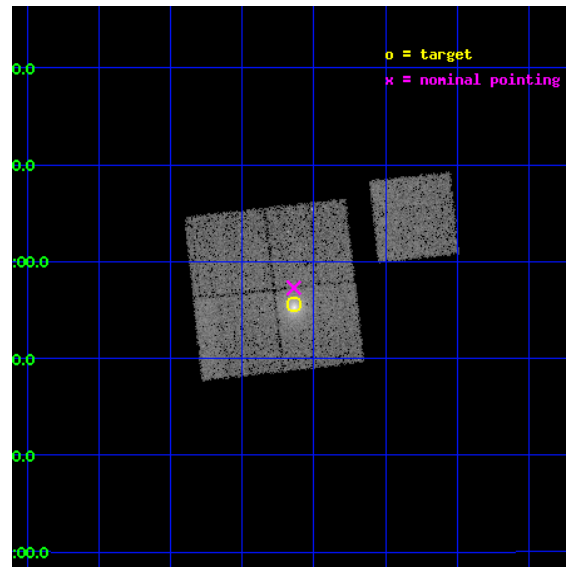
L2 Processing Date : Jul 4 2012

Contents

1	Front	2
2	OBI	3
2.1	OBI	3
2.1.1	Images	3
2.1.2	Bias	3
2.1.3	Parameters	4
2.1.4	Events	4
2.2	Compared Parameters	5
2.3	Aspect	6
2.4	Star Slots	9
2.4.1	Slot 3	9
2.4.2	Slot 4	10
2.4.3	Slot 5	11
2.4.4	Slot 6	12
2.4.5	Slot 7	13
2.5	FID Slots	14
2.5.1	Slot 0	14
2.5.2	Slot 1	15
2.5.3	Slot 2	16
A	Summary	17
A.1	Status	17
A.2	Comments	17

1 Front

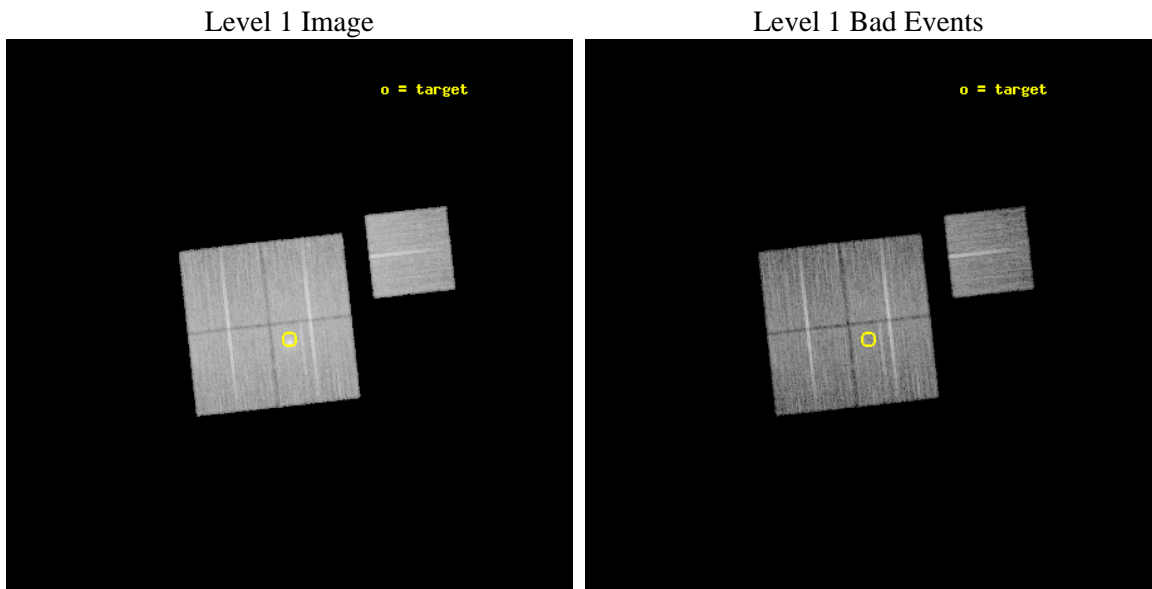
seq_num	800973	Sequence number
obs_id	12253	Observation id
title	Extending X-ray and Sunyaev-Zel'dovich effect calibrations to low mass galaxy clusters	Proposal title
observer	Dr Ben Maughan	Principal investigator
object	Z808	Source name
dtcycle	0	
cycle	P	events from which exps? Prim/Second/Both
ra_targ	45.409167	Observer's specified target RA [deg]
dec_targ	1.927	Observer's specified target Dec [deg]
ra_nom	45.409897649676	Nominal RA [deg]
dec_nom	1.9547934907001	Nominal Dec [deg]
roll_nom	83.686404581491	Nominal Roll [deg]
revision	2	Processing version of data
ontime	19052.600146532	Sum of GTIs [s]
livetime	18803.663899297	Livetime [s]
ontime0	19049.382879257	Sum of GTIs [s]
ontime1	19052.564919651	Sum of GTIs [s]
ontime2	19052.600146532	Sum of GTIs [s]
ontime3	19052.600146532	Sum of GTIs [s]
ontime6	19052.482839644	Sum of GTIs [s]
l2events	75224	Number of level 2 events



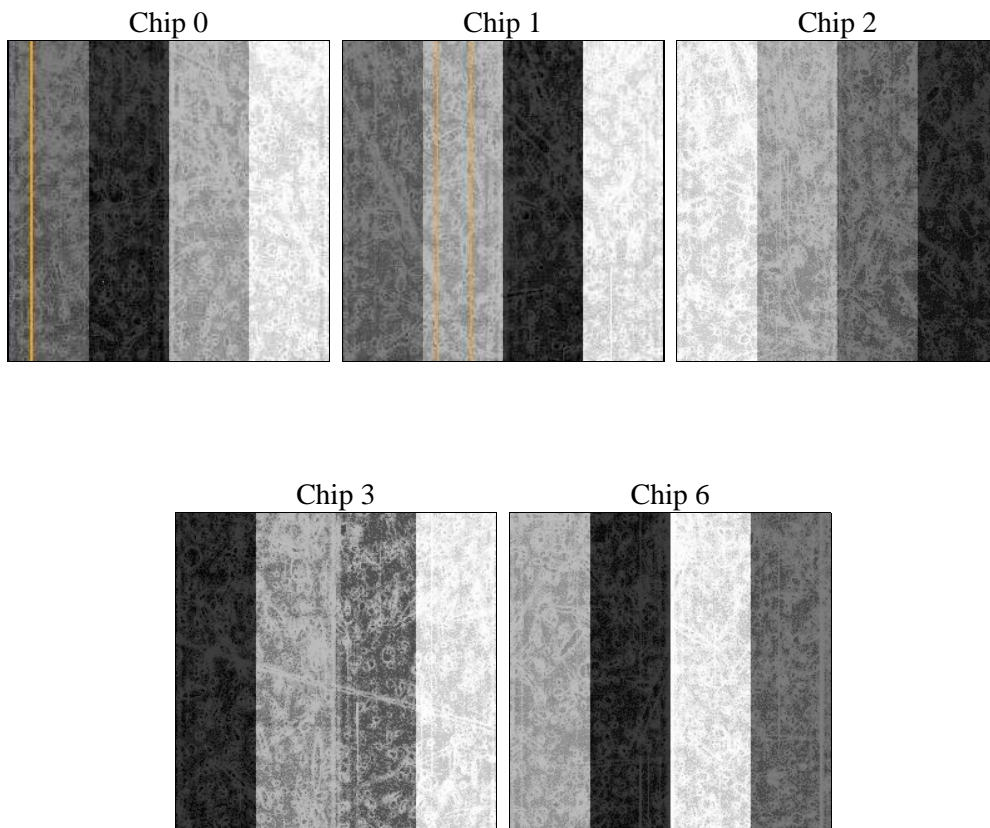
2 OBI

2.1 OBI

2.1.1 Images



2.1.2 Bias



2.1.3 Parameters

obi_num	0	Obi number	sched_exp_time	19000.012000	[s] Scheduled observation exposure time
ascdsver	8.4.5	Processing system revision	ontime	19052.600146532	Sum of GTIs [s]
caldsver	4.5.0	 	ontime0	19049.382879257	Sum of GTIs [s]
date	2012-07-04T15:59:26	Date and time of file creation	ontime1	19052.564919651	Sum of GTIs [s]
revision	2	Processing version of data	ontime2	19052.600146532	Sum of GTIs [s]
			ontime3	19052.600146532	Sum of GTIs [s]
			ontime6	19052.482839644	Sum of GTIs [s]
			l1events	689413	Number of level 1 events

2.1.4 Events

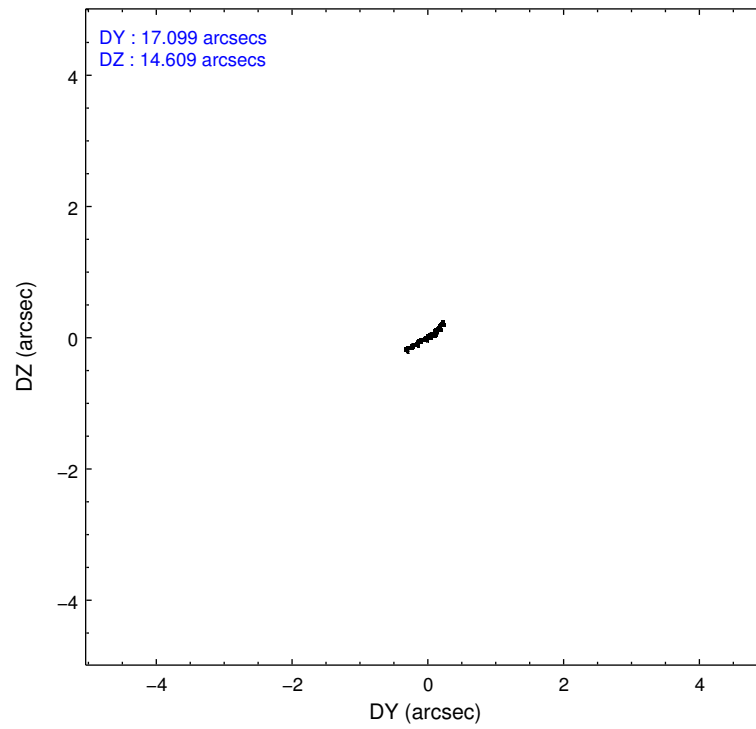
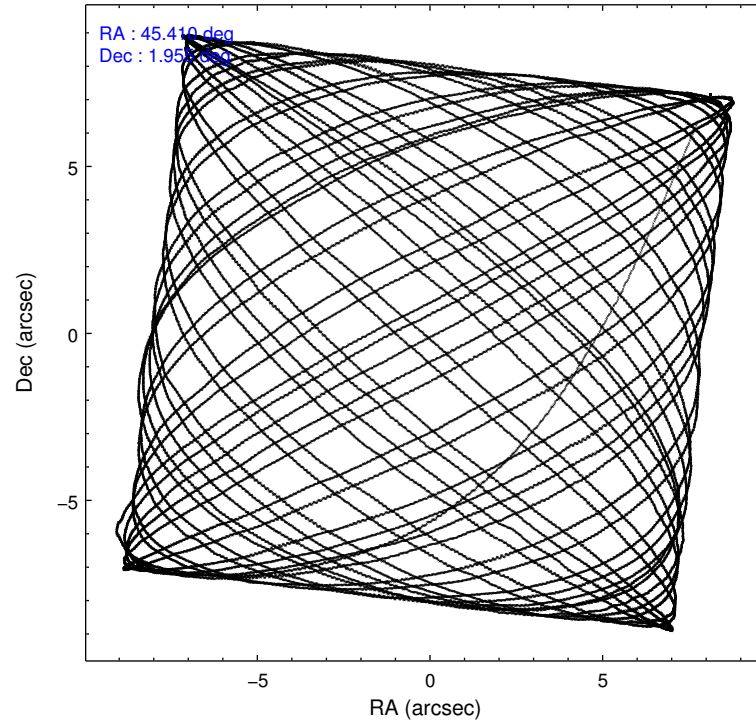
	ccd 0	ccd 1	ccd 2	ccd 3	ccd 6
level 1 events	130681	129399	144043	150304	134986
rejected events	115487	112297	128616	125428	119829
rejected %	88%	86%	89%	83%	88%

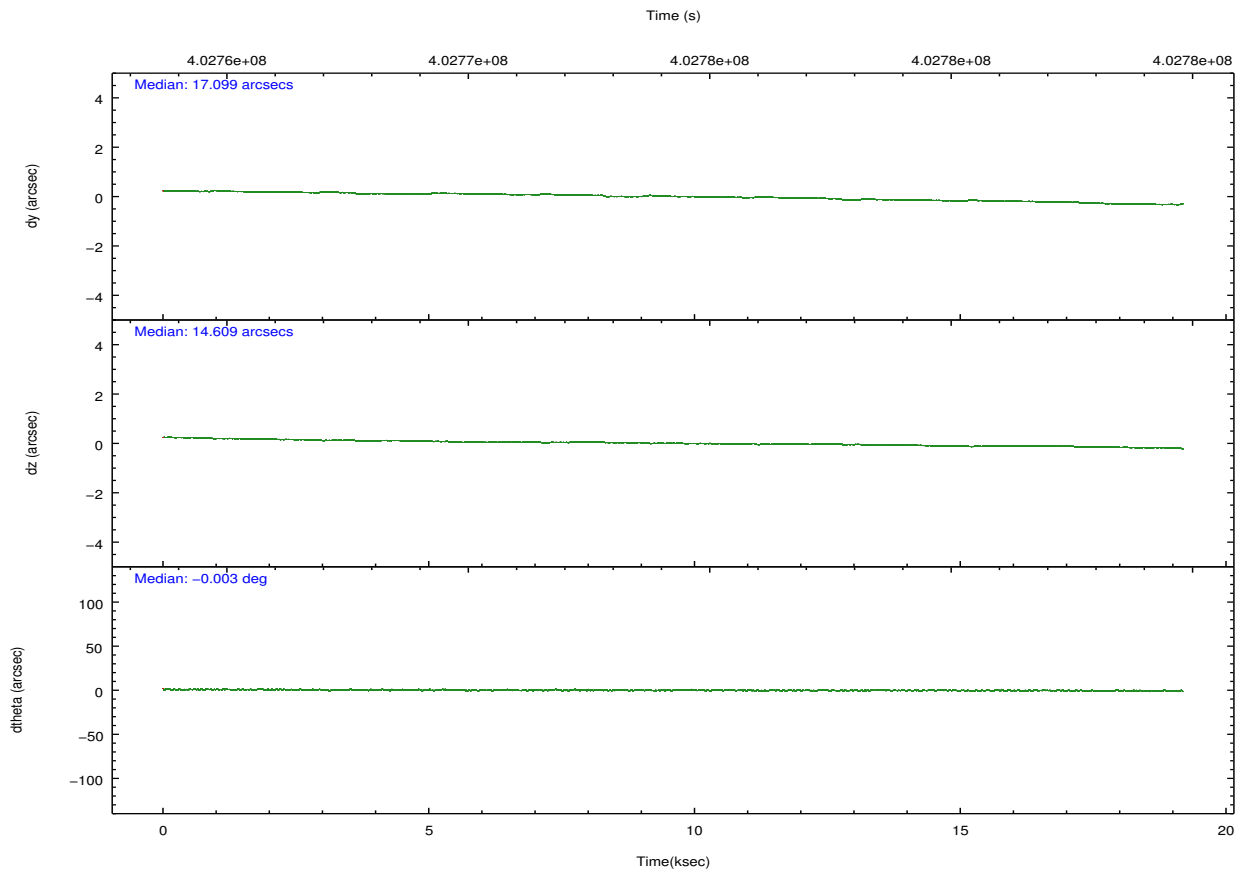
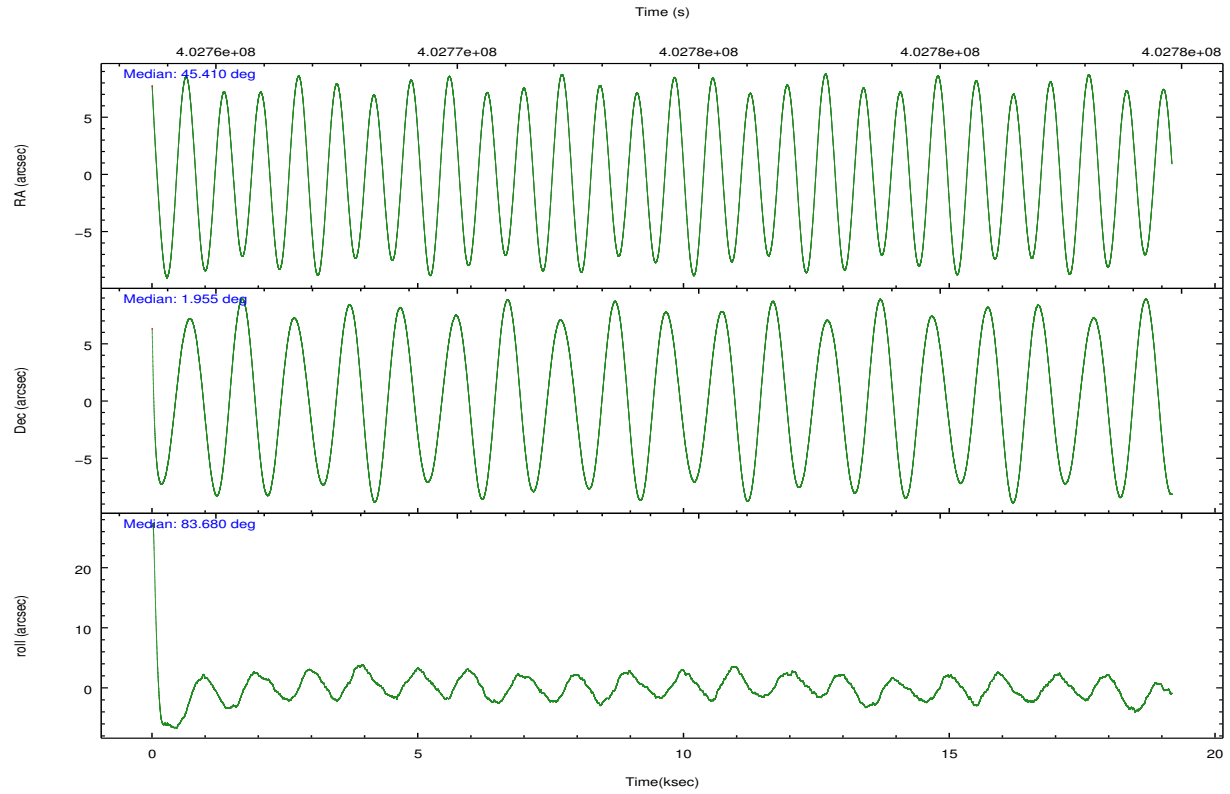
	ccd 0	ccd 1	ccd 2	ccd 3	ccd 6
grade 0 events	5212	6193	5764	13736	5096
	3%	4%	4%	9%	3%
grade 1 events	81	90	83	130	63
	0%	0%	0%	0%	0%
grade 2 events	3740	3818	3716	4184	3412
	2%	2%	2%	2%	2%
grade 3 events	1732	1739	1512	1883	1632
	1%	1%	1%	1%	1%
grade 4 events	1456	1770	1564	1863	1657
	1%	1%	1%	1%	1%
grade 5 events	5594	6022	5276	6441	6206
	4%	4%	3%	4%	4%
grade 6 events	3057	3584	2873	3218	3361
	2%	2%	1%	2%	2%
grade 7 events	109809	106183	123255	118849	113559
	84%	82%	85%	79%	84%

2.2 Compared Parameters

Parameter	Planned	Actual	Parameter	Planned	Actual
Instrument	ACIS	ACIS	Obspar format version number	7	7
Detector	ACIS-01236	ACIS-01236	Obspar file type	PREDICTED	ACTUAL
Grating	NONE	NONE	Obspar update status	NONE	UPDATED
Data mode	VFAINT	VFAINT	Number of optional ACIS chips dropped	0	0
Observation mode	POINTING	POINTING	On-chip summing requested	N	N
[deg] Pointing RA	45.421054	45.40989764967571	Subarray requested	NONE	NONE
[deg] Pointing Dec	1.929666	1.954793490700063	Alternating exposures requested	N	N
[deg] Pointing Roll	83.477319	83.68640458149093	[s] Primary exposure time	0.000000	3.1
[mm] SIM focus pos	-0.782348	-0.7809083437167272			
[mm] SIM defocus	0	0.001439871863259334			
[mm] SIM translation stage pos	-229.442463	-229.4438428438578			
[mm] SIM translation stage offset	-4.15	-4.148610159071865			
[s] Observation start time (MET)	402764830.184000	402763769.76304			
Observation start date	2010-10-06T15:06:04	2010-10-06T14:49:29			
[s] Observation end time (MET)	402783830.184000	402784066.81409			
Observation end date	2010-10-06T20:22:44	2010-10-06T20:27:46			
Read mode	TIMED	TIMED			

2.3 Aspect



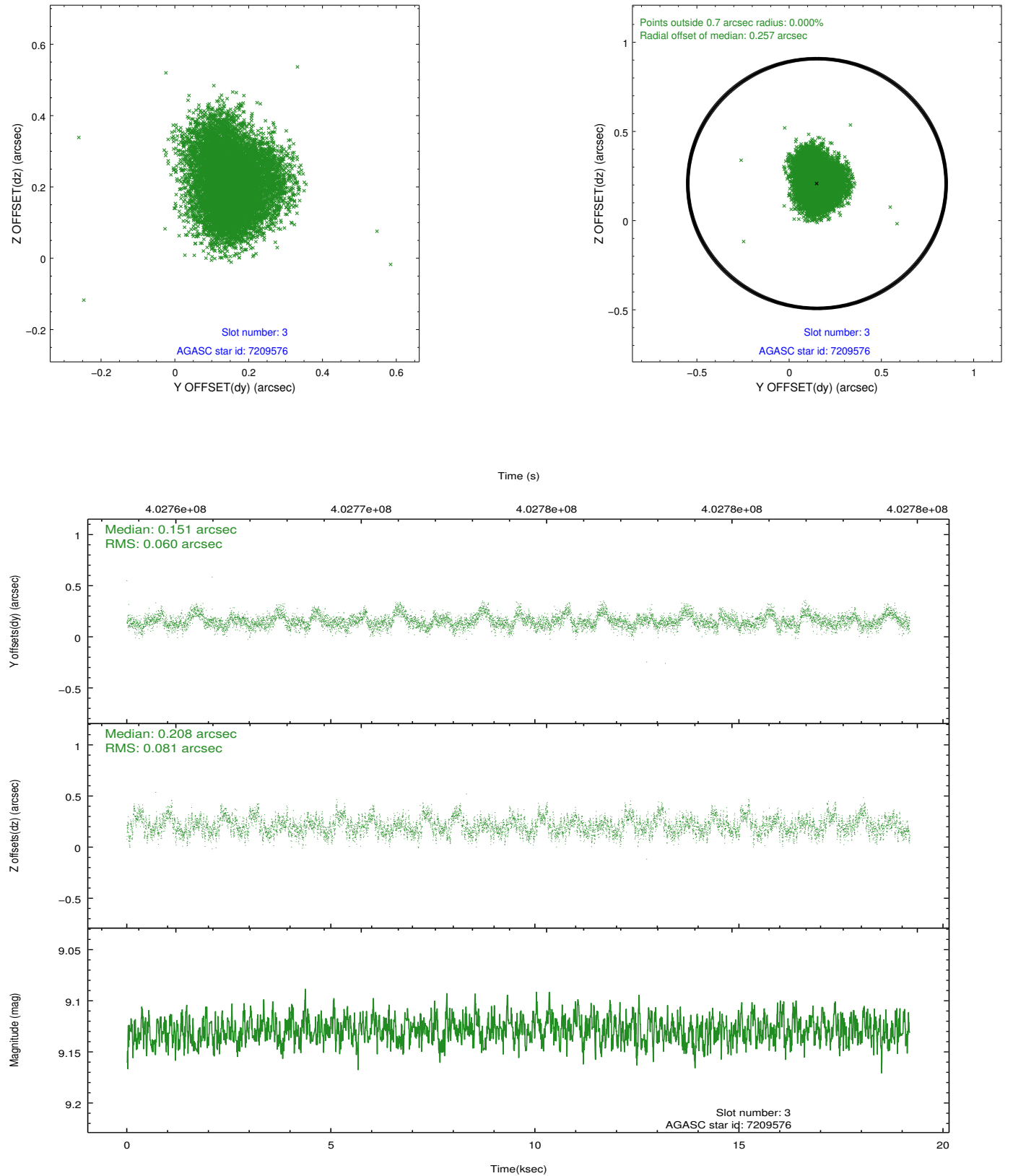


Slot Statistics

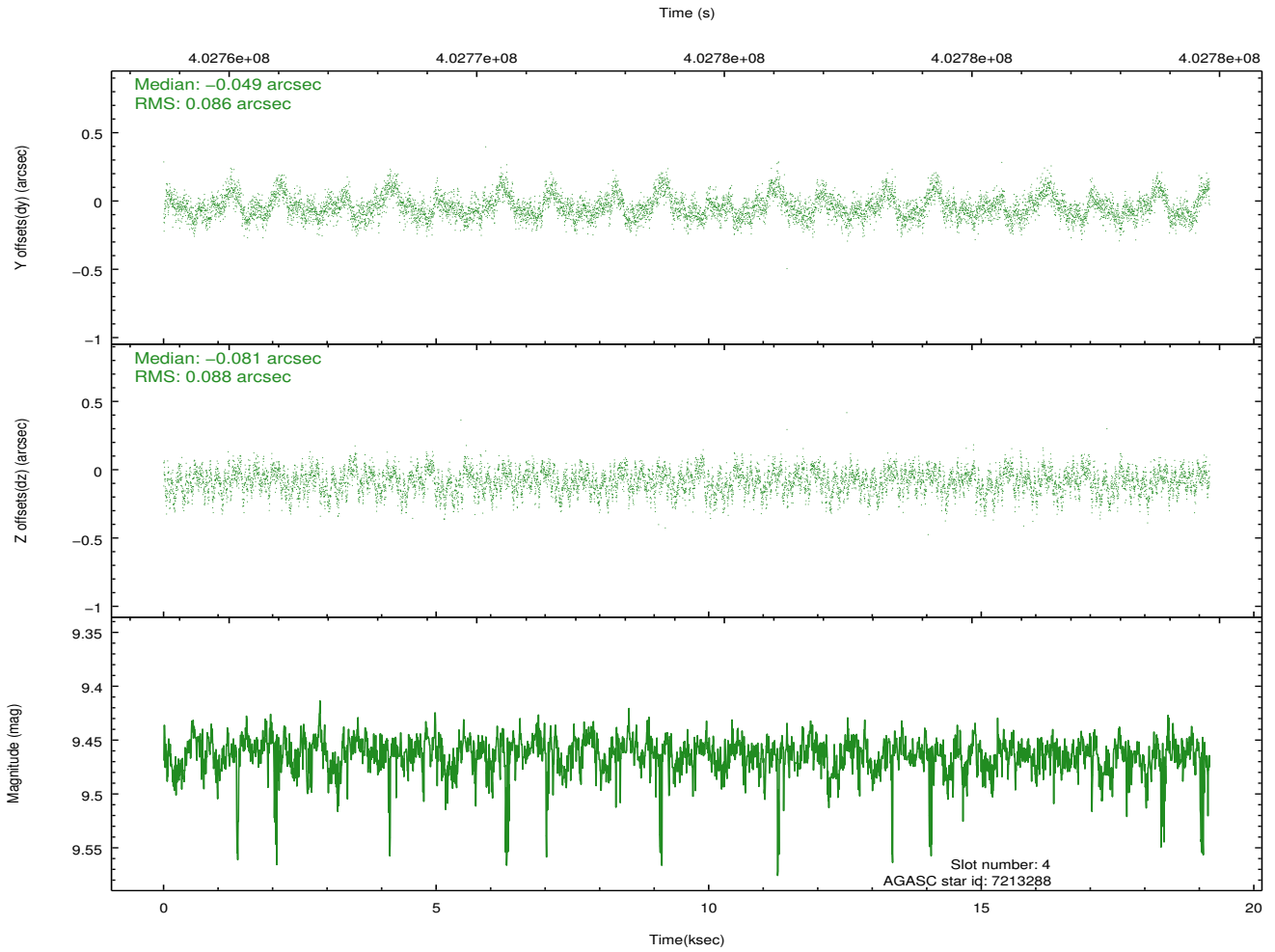
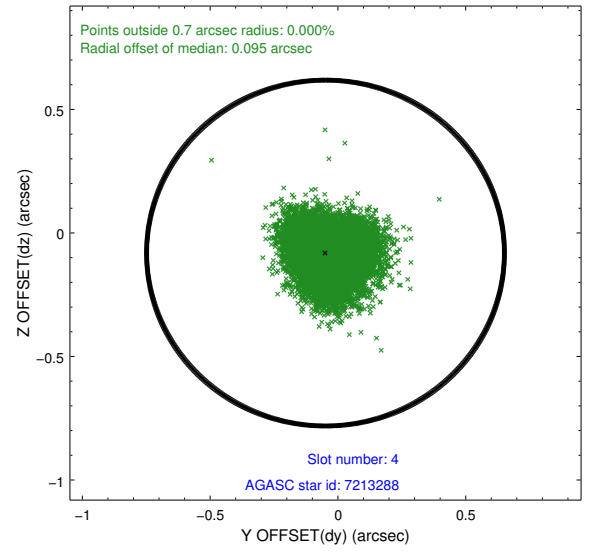
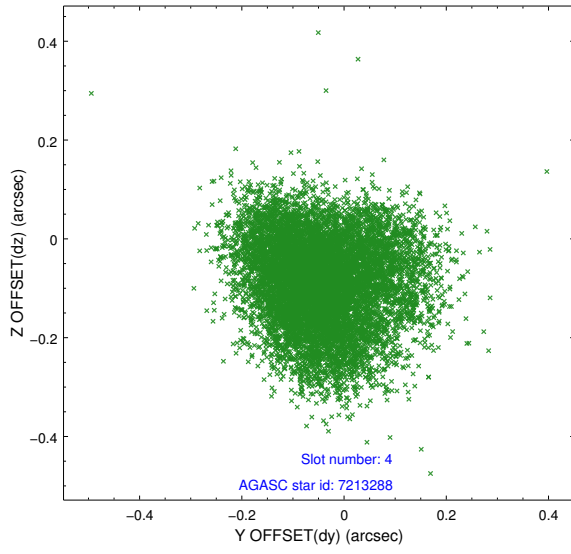
slot	status	id	mag	n_pts	med_dy	med_dz	dr1	dr2	ra	dec	mean_y	mean_z
0	FID	ACIS-I-1	7.05	4680	0.078	-0.024	0.013	0.021	0.000000	0.000000	922.34	-923.33
1	FID	ACIS-I-5	7.03	4680	-0.246	0.075	0.012	0.020	0.000000	0.000000	-1826.02	974.09
2	FID	ACIS-I-6	7.04	4680	0.076	0.020	0.009	0.015	0.000000	0.000000	387.61	1618.81
3	GUIDE	7209576	9.13	9352	0.151	0.208	0.109	0.172	45.871057	1.512177	-1308.30	-1779.87
4	GUIDE	7213288	9.46	9341	-0.049	-0.081	0.133	0.210	45.408191	2.168280	848.27	143.64
5	GUIDE	7213448	7.52	9357	-0.008	0.351	0.062	0.102	45.794133	1.368172	-1855.28	-1563.80
6	GUIDE	6299080	7.56	9359	-0.164	-0.225	0.059	0.097	44.857756	1.651231	-1226.39	1900.11
7	GUIDE	7214320	8.67	9354	0.055	-0.249	0.083	0.133	45.389163	1.768628	-588.83	48.30

2.4 Star Slots

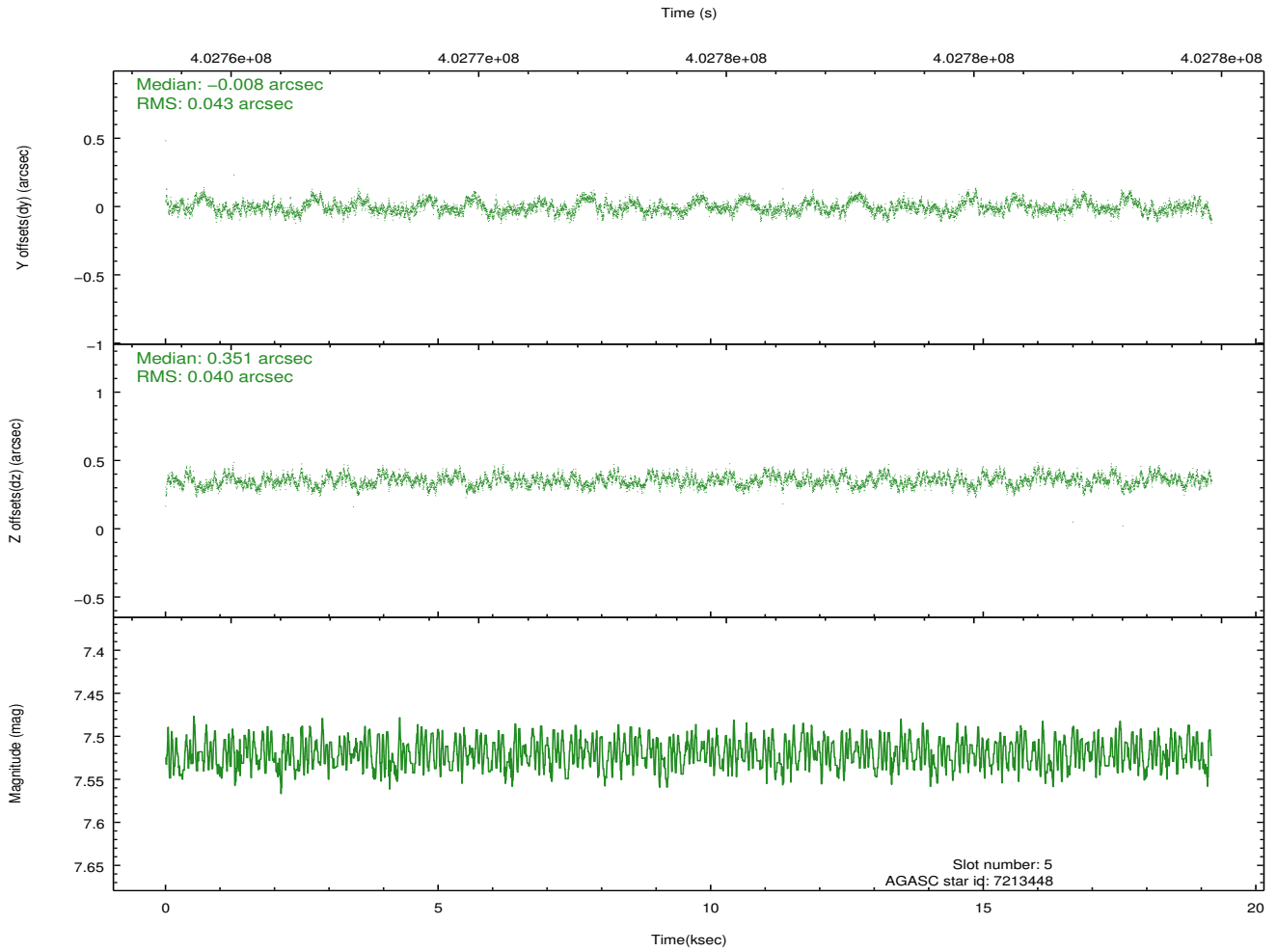
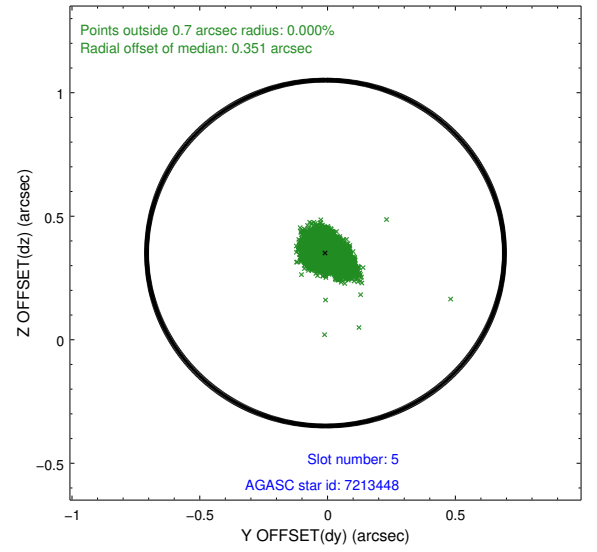
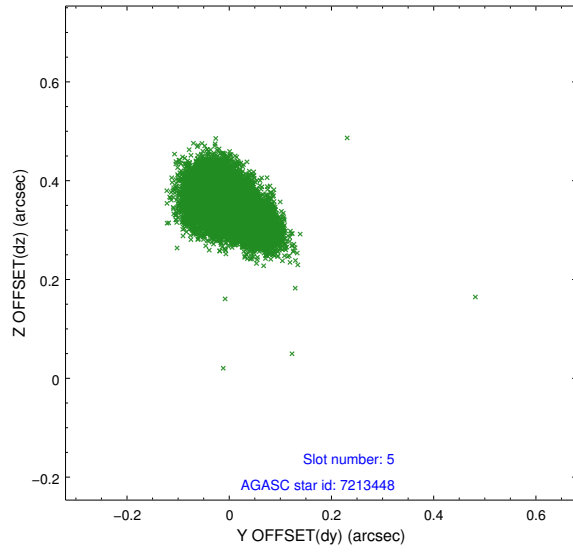
2.4.1 Slot 3



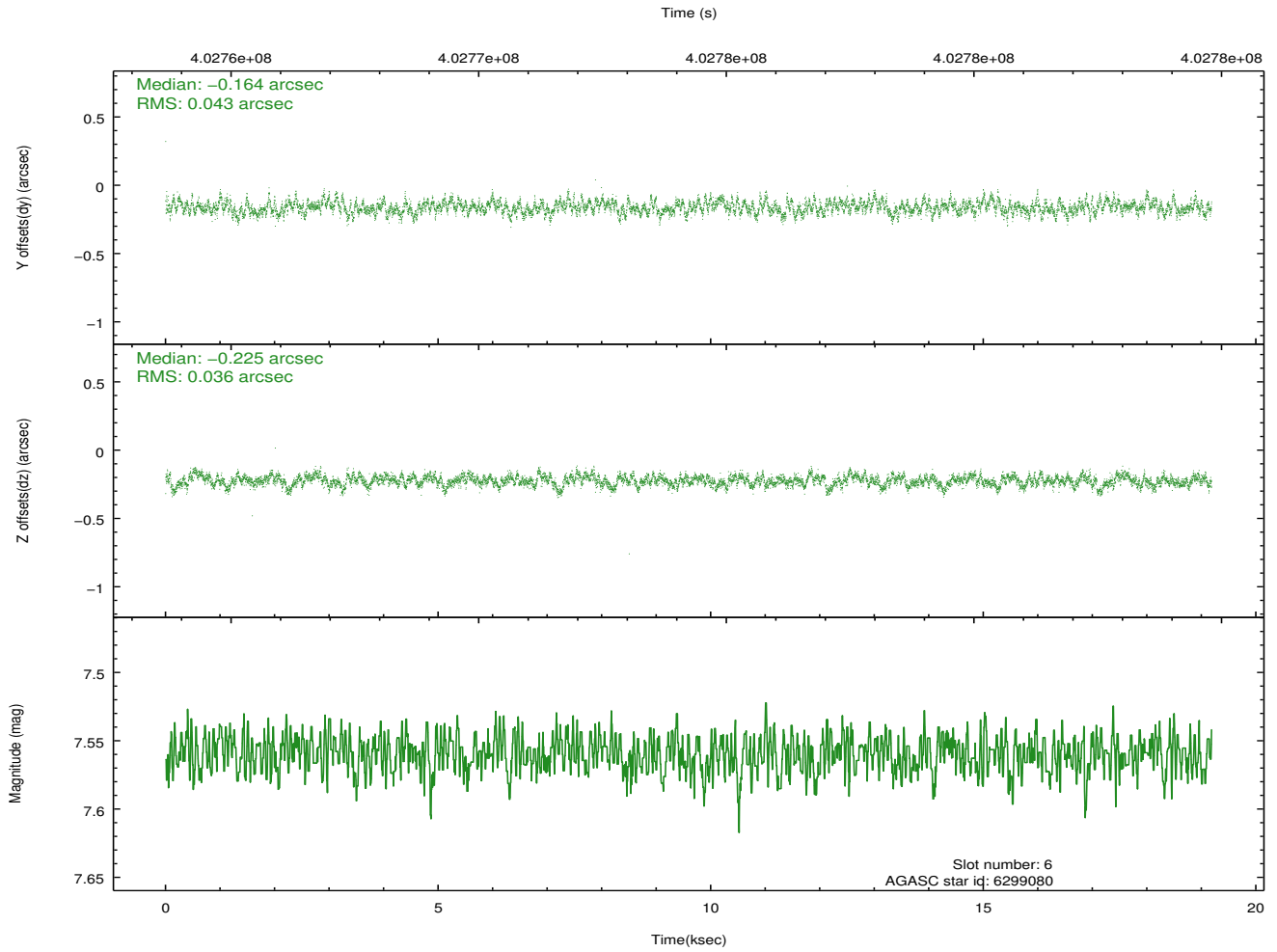
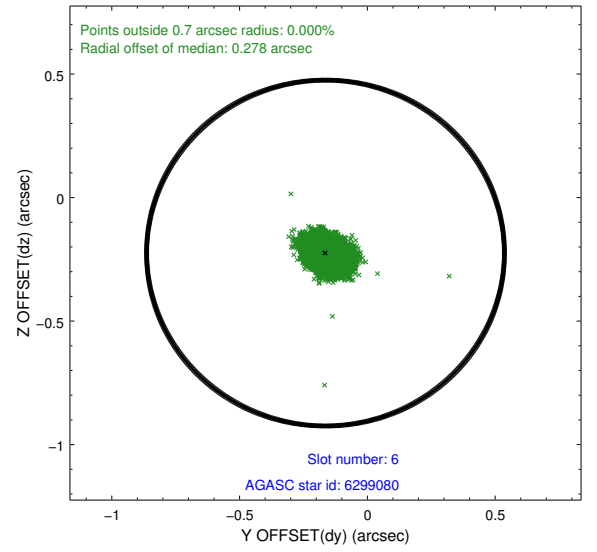
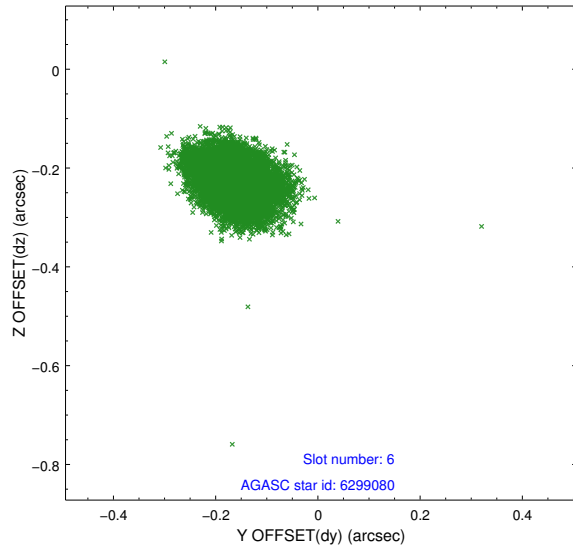
2.4.2 Slot 4



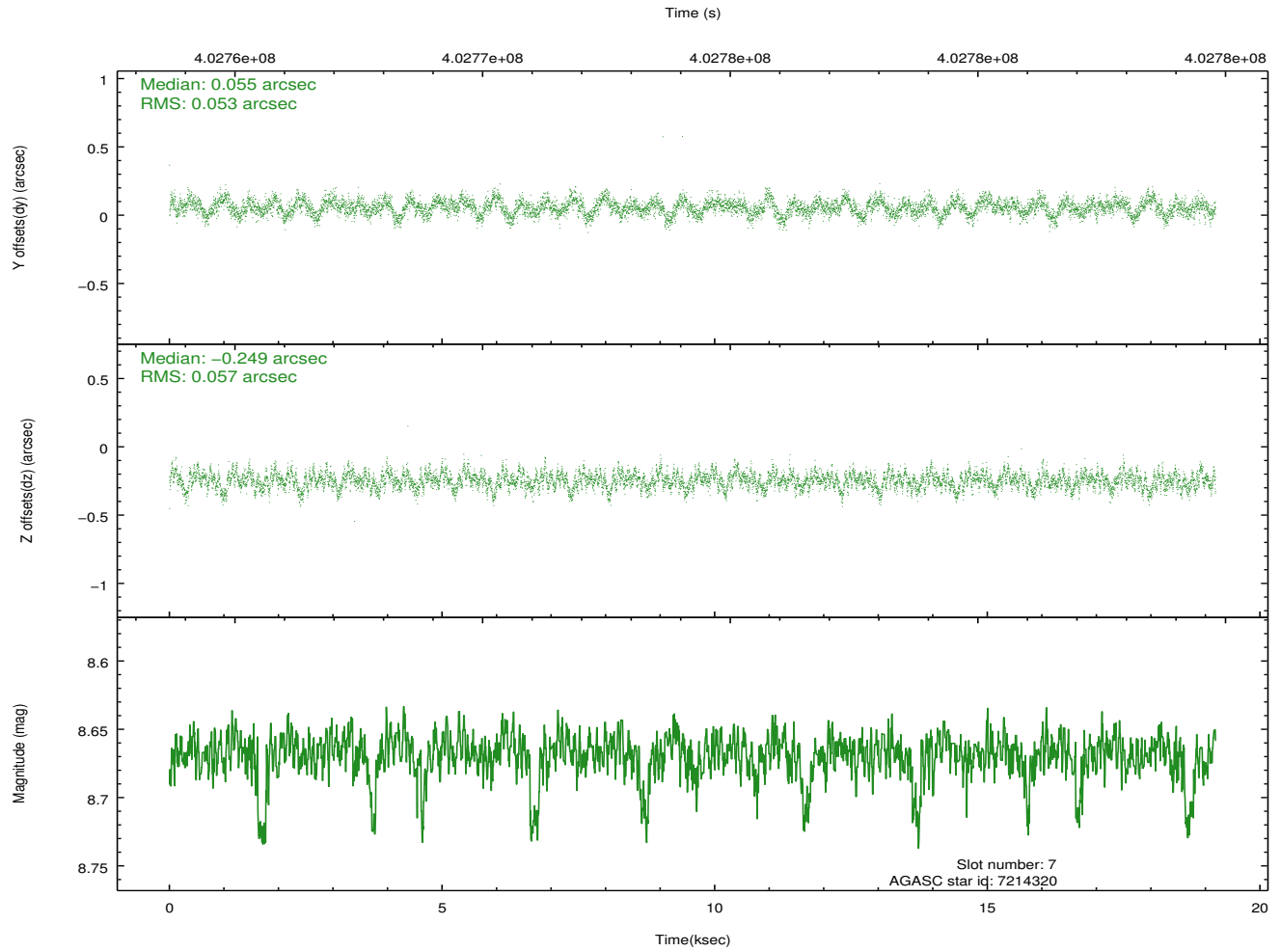
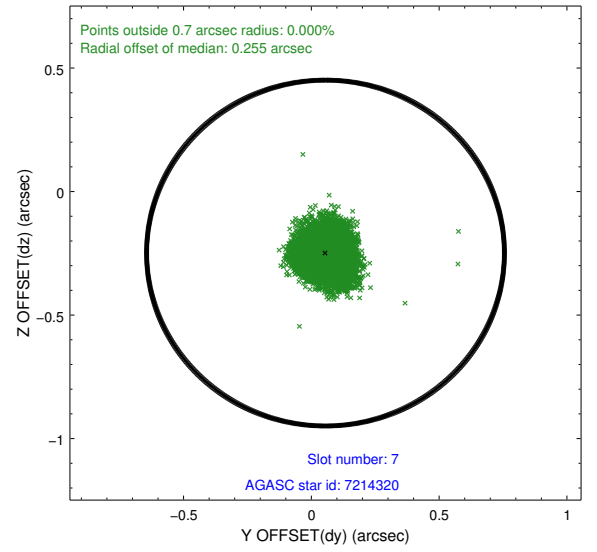
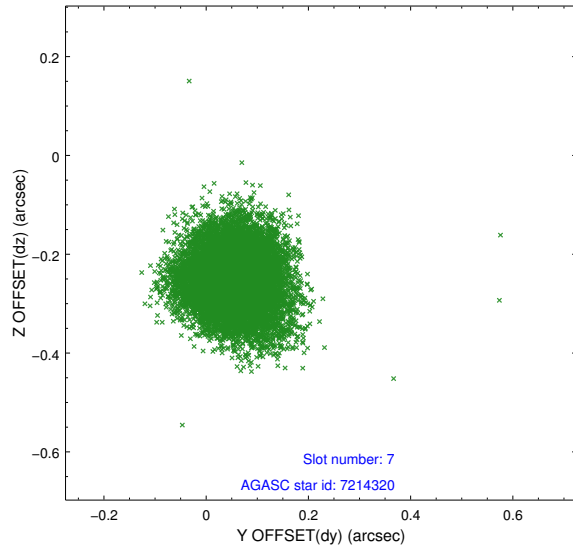
2.4.3 Slot 5



2.4.4 Slot 6

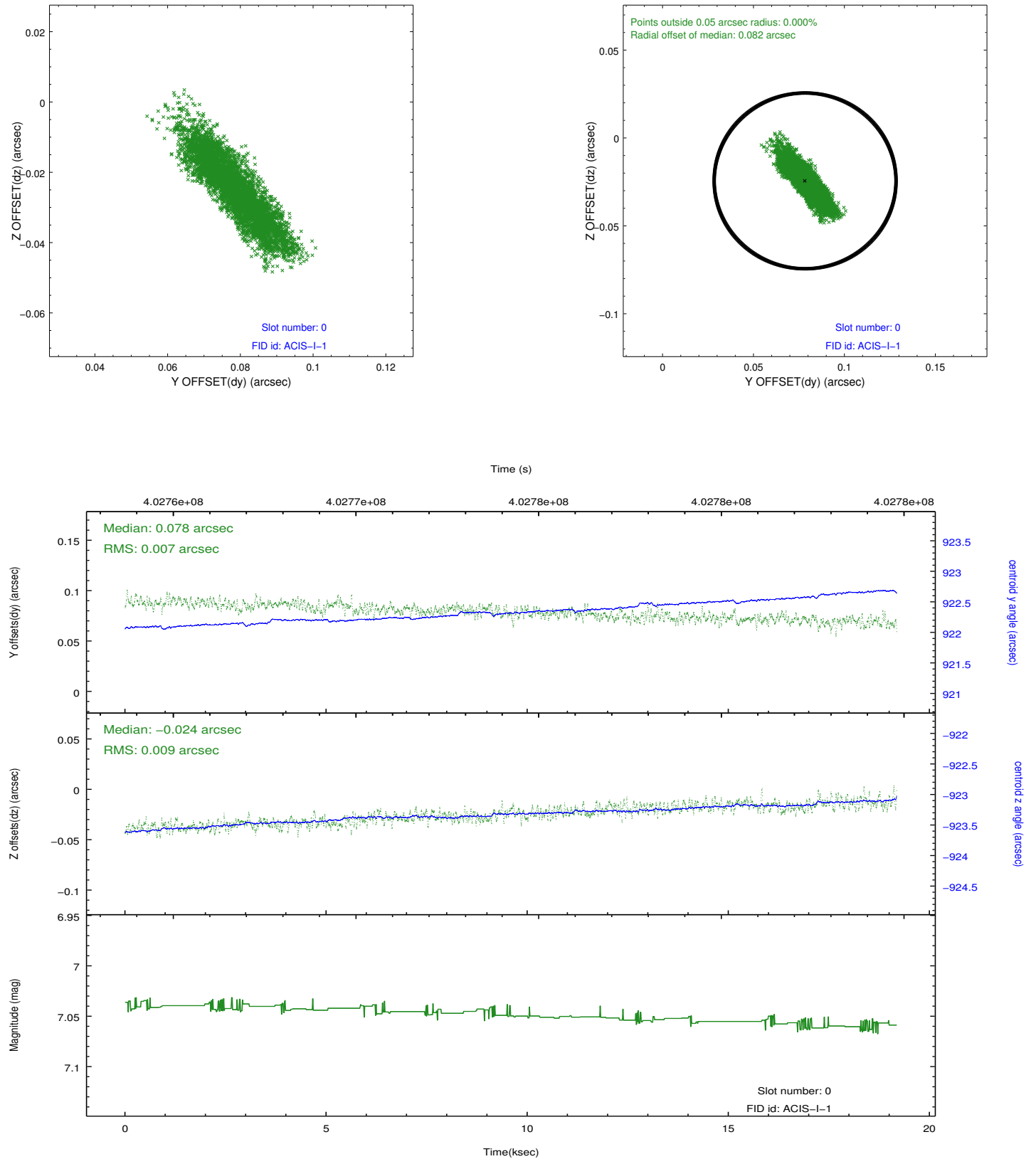


2.4.5 Slot 7

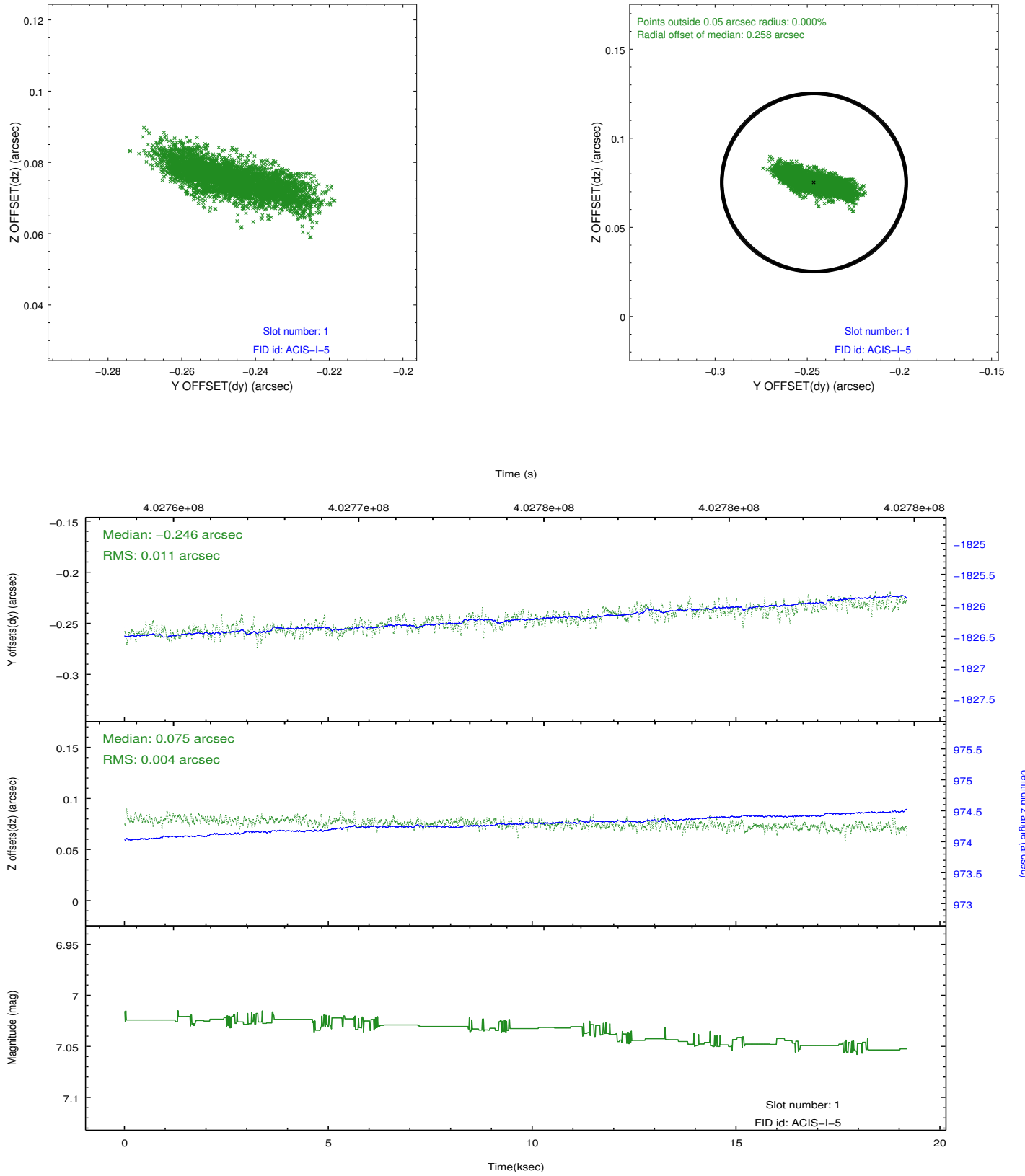


2.5 FID Slots

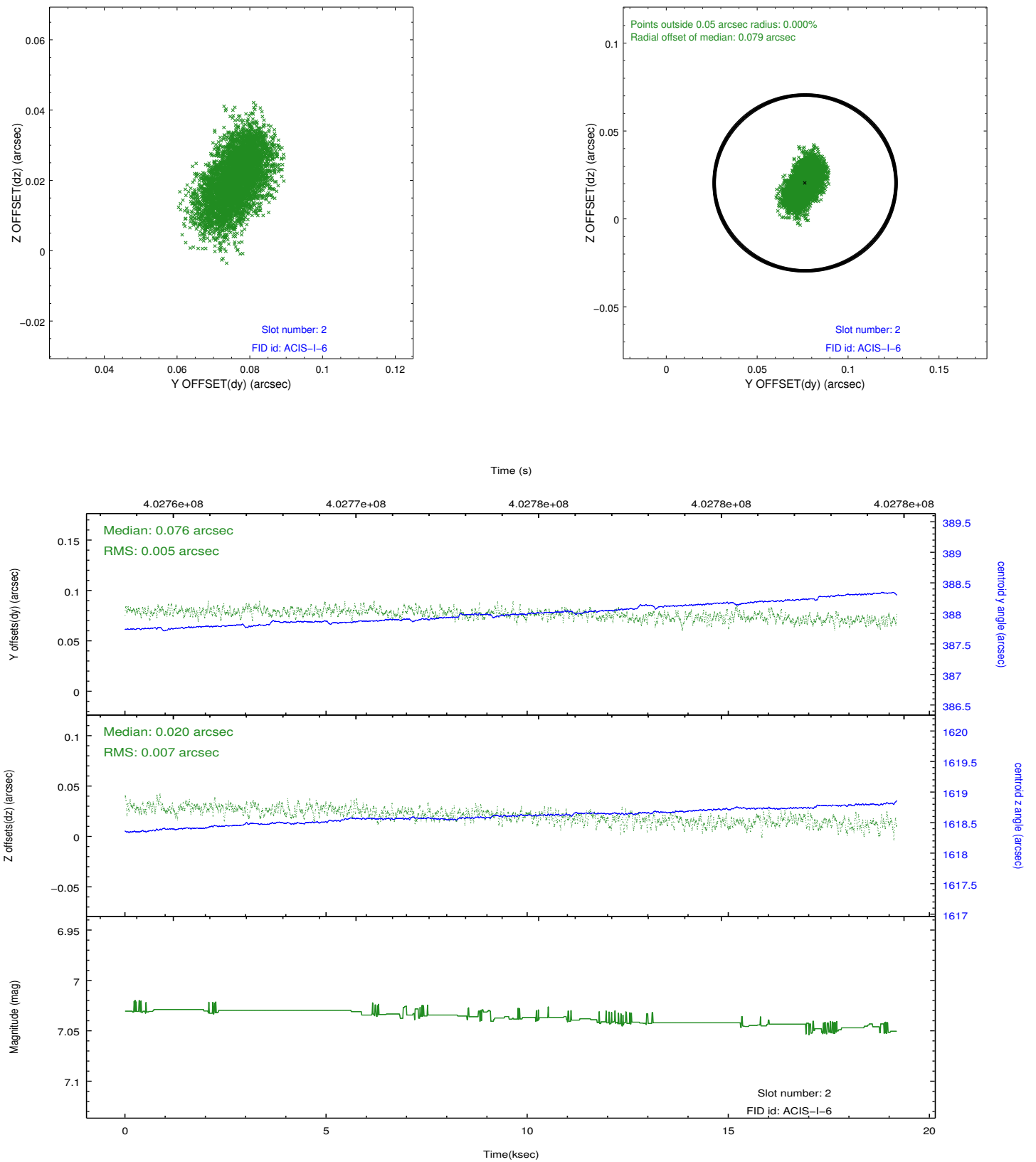
2.5.1 Slot 0



2.5.2 Slot 1



2.5.3 Slot 2



A Summary

A.1 Status

V&V Scientist	Jen Lauer
V&V Date (YYYY-MM-DD)	2012.07.12
V&V Edition	1
V&V Disposition and Status	OK
V&V Charge Time	19.052600146532

A.2 Comments