

V&V Reference Report

L2 ASCDS Version : 8.4.5

Observation 12180 - L2 Version 2
Chandra X-Ray Center

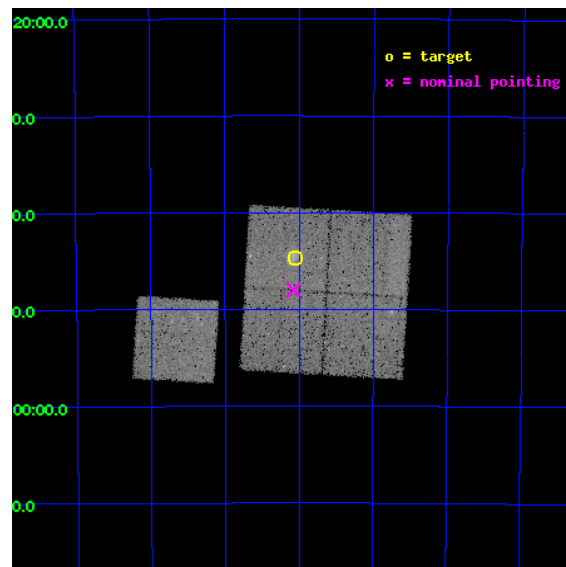
L2 Processing Date : Jul 7 2012

Contents

1	Front	2
2	OBI	3
2.1	OBI	3
2.1.1	Images	3
2.1.2	Bias	3
2.1.3	Parameters	4
2.1.4	Events	4
2.2	Compared Parameters	5
2.3	Aspect	6
2.4	Star Slots	9
2.4.1	Slot 3	9
2.4.2	Slot 4	10
2.4.3	Slot 5	11
2.4.4	Slot 6	12
2.4.5	Slot 7	13
2.5	FID Slots	14
2.5.1	Slot 0	14
2.5.2	Slot 1	15
2.5.3	Slot 2	16
A	Summary	17
A.1	Status	17
A.2	Comments	17

1 Front

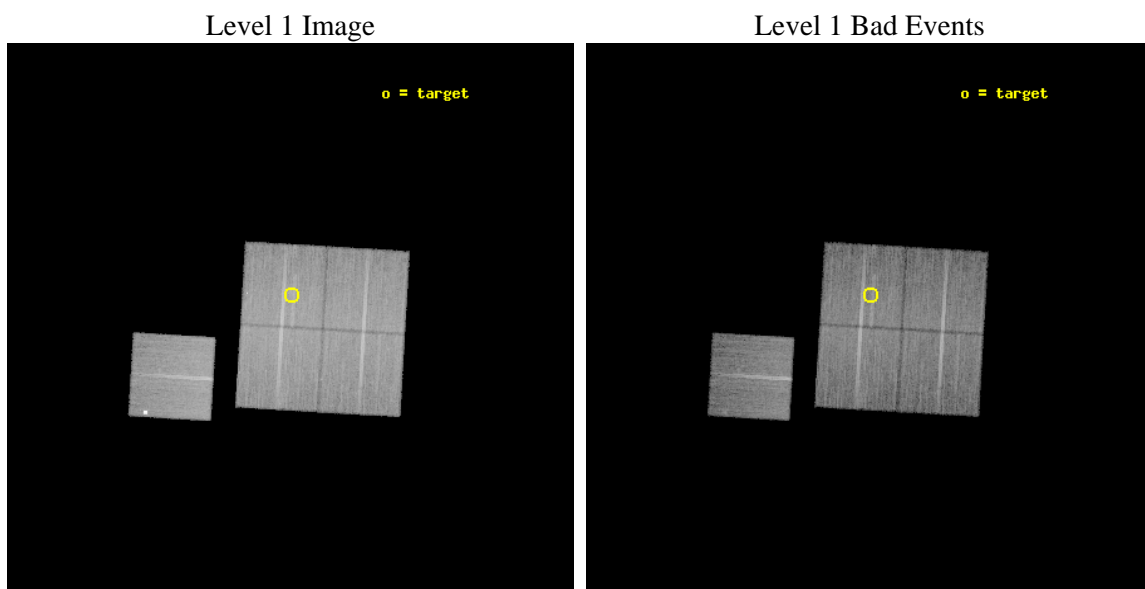
seq_num	800946	Sequence number
obs_id	12180	Observation id
title	Chandra Observations of a Sample of High Redshift SZE Selected Galaxy Clusters	Proposal title
observer	Dr. Stephen Murray	Principal investigator
object	SPT-CL 2106-5845	Source name
dtcycle	0	
cycle	P	events from which exps? Prim/Second/Both
ra_targ	316.515	Observer's specified target RA [deg]
dec_targ	-58.745306	Observer's specified target Dec [deg]
ra_nom	316.51747743409	Nominal RA [deg]
dec_nom	-58.799705483161	Nominal Dec [deg]
roll_nom	273.41020476786	Nominal Roll [deg]
revision	2	Processing version of data
ontime	25044.005220473	Sum of GTIs [s]
livetime	24716.786855139	Livetime [s]
ontime0	25050.164090991	Sum of GTIs [s]
ontime1	25053.346121311	Sum of GTIs [s]
ontime2	25053.387161314	Sum of GTIs [s]
ontime3	25044.005220473	Sum of GTIs [s]
ontime6	25053.264041305	Sum of GTIs [s]
l2events	85965	Number of level 2 events



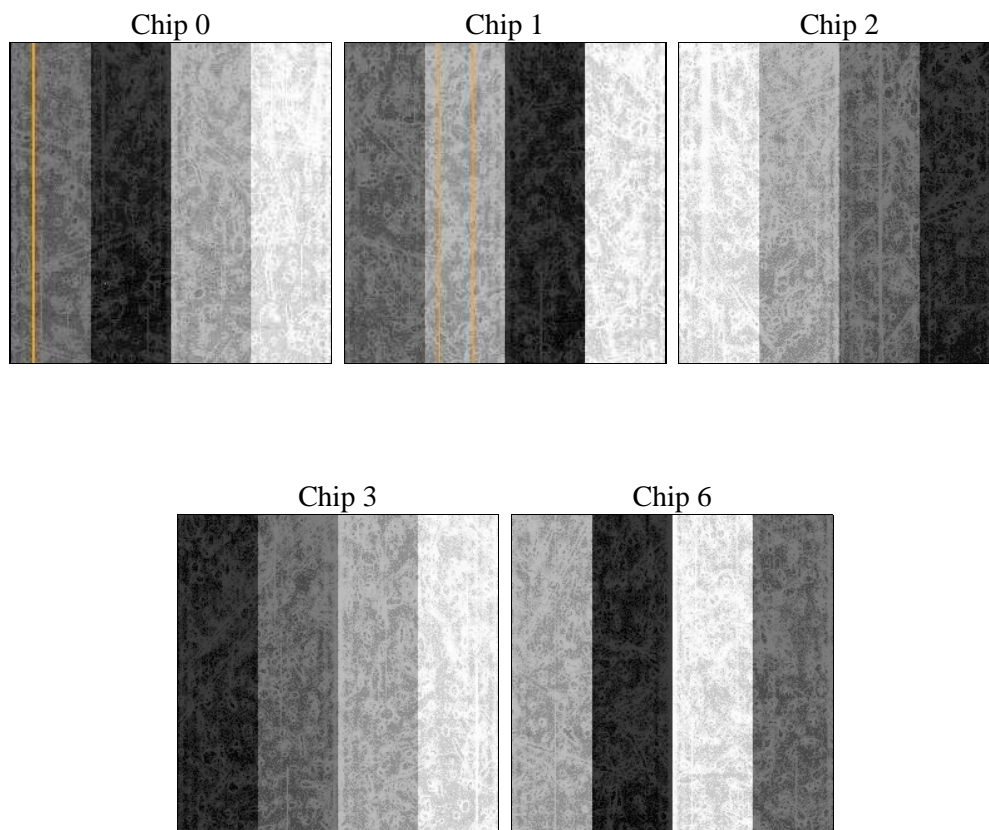
2 OBI

2.1 OBI

2.1.1 Images



2.1.2 Bias



2.1.3 Parameters

obi_num	0	Obi number	sched_exp_time	25000.000000	[s] Scheduled observation exposure time
ascdsver	8.4.5	Processing system revision	ontime	25044.005220473	Sum of GTIs [s]
caldsver	4.5.0	 	ontime0	25050.164090991	Sum of GTIs [s]
date	2012-07-07T03:41:43	Date and time of file creation	ontime1	25053.346121311	Sum of GTIs [s]
revision	2	Processing version of data	ontime2	25053.387161314	Sum of GTIs [s]
			ontime3	25044.005220473	Sum of GTIs [s]
			ontime6	25053.264041305	Sum of GTIs [s]
			l1events	870967	Number of level 1 events

2.1.4 Events

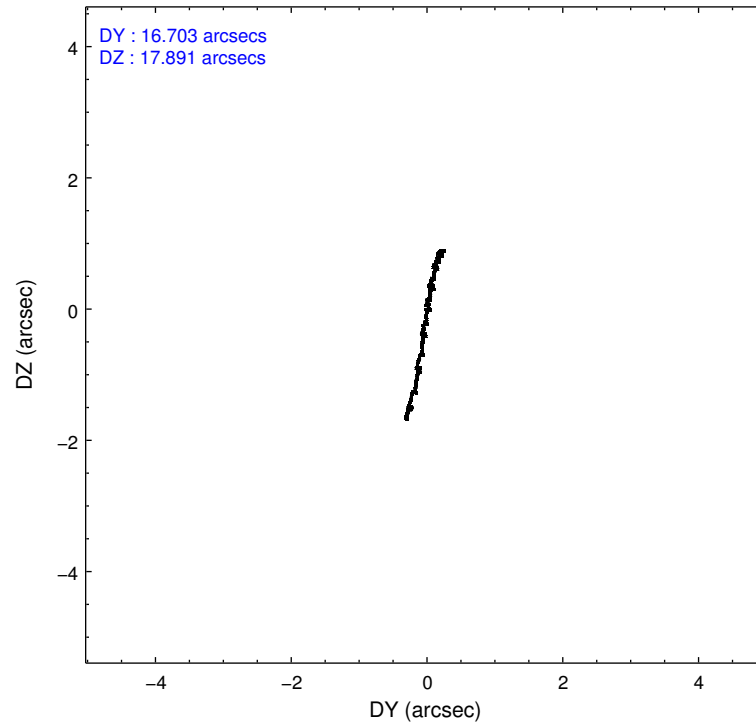
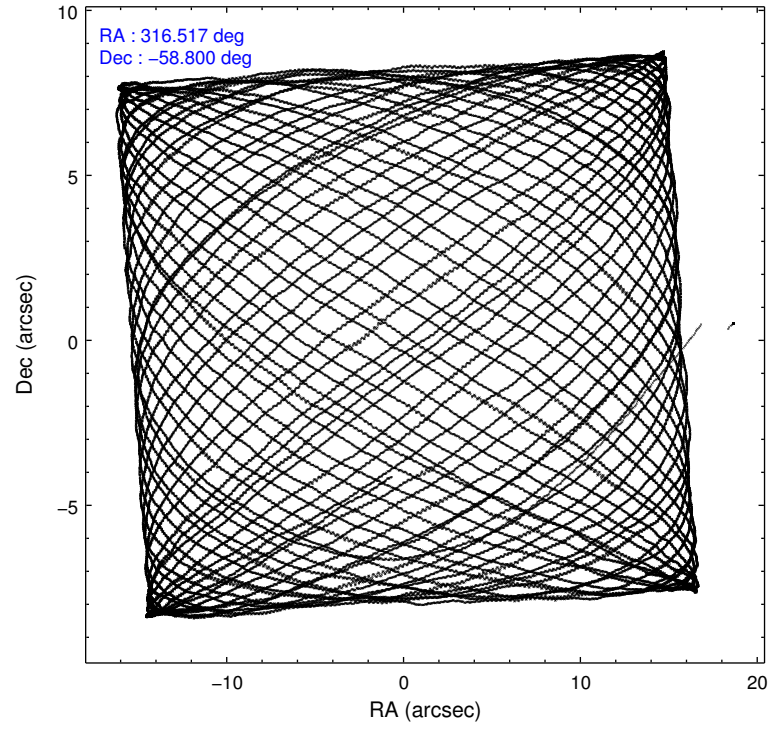
	ccd 0	ccd 1	ccd 2	ccd 3	ccd 6
level 1 events	161590	167751	181224	178059	182343
rejected events	141704	145654	161769	157643	154072
rejected %	87%	86%	89%	88%	84%

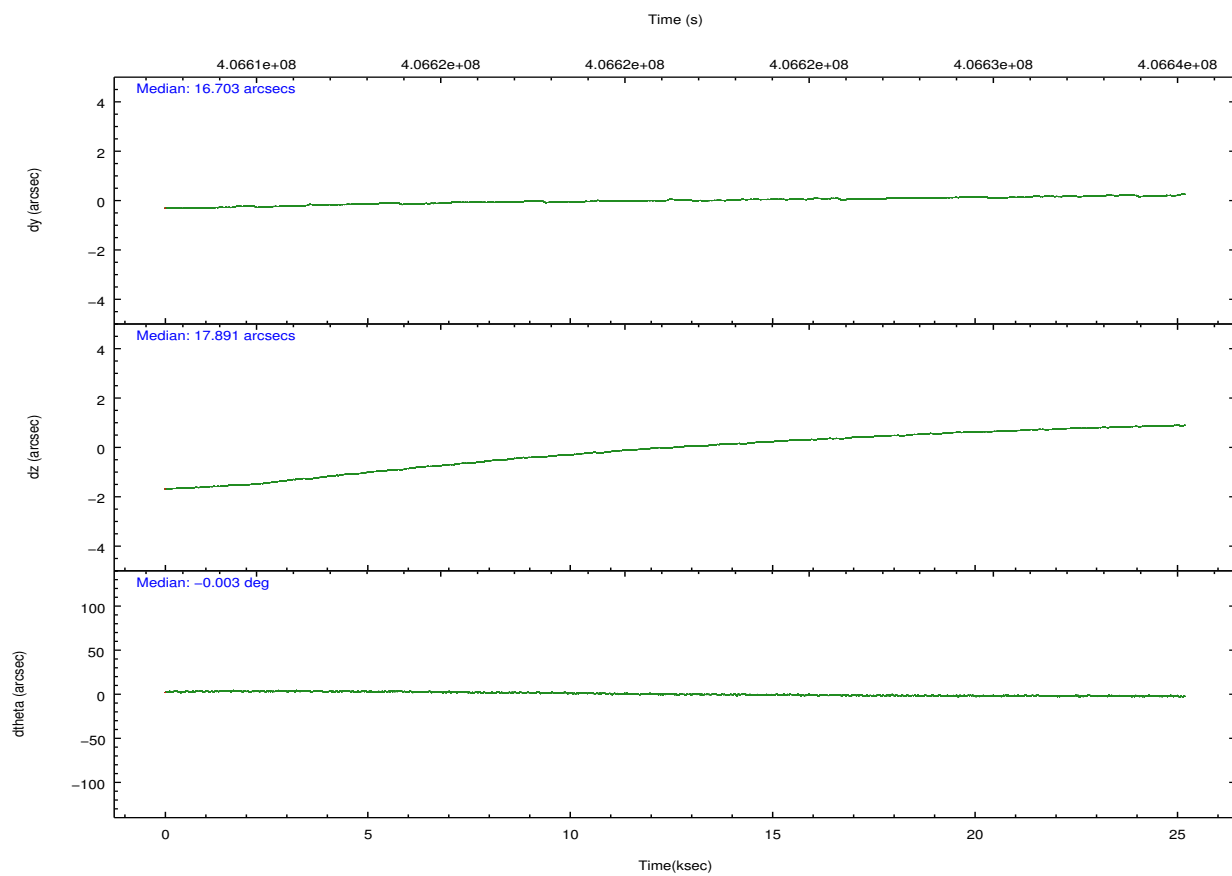
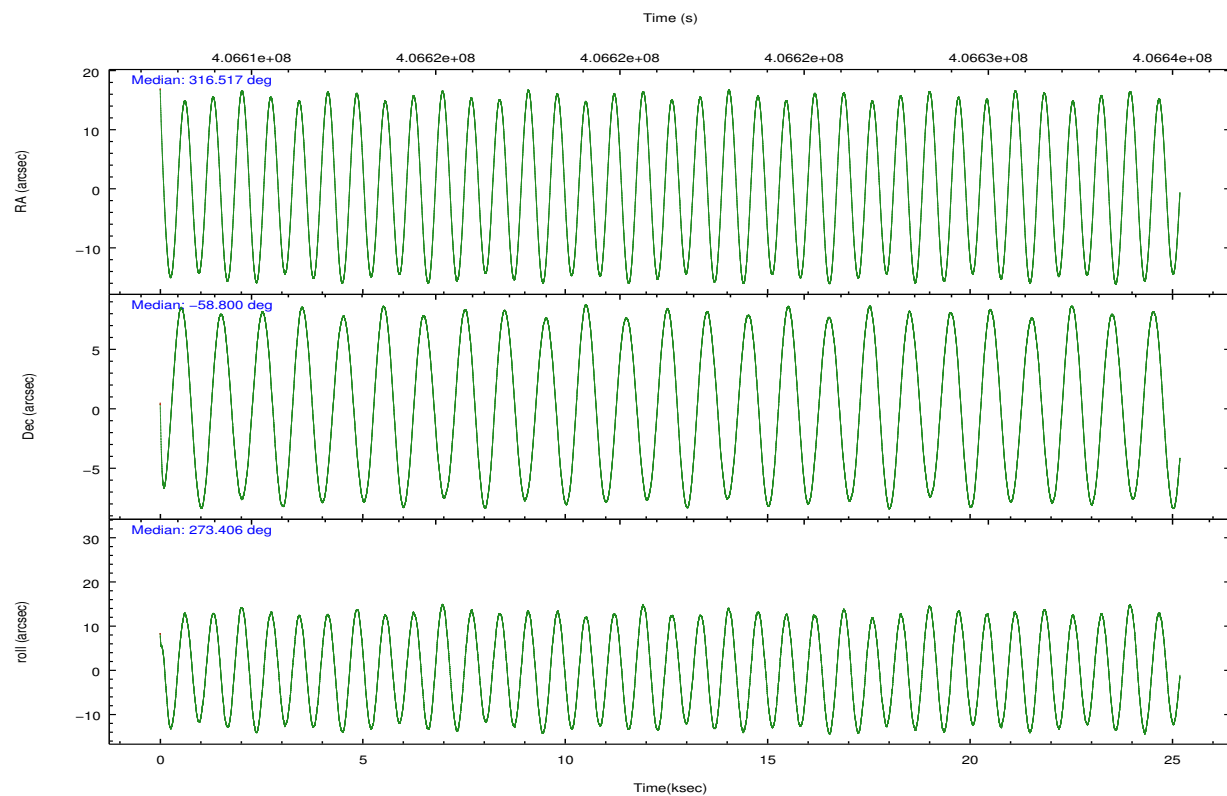
	ccd 0	ccd 1	ccd 2	ccd 3	ccd 6
grade 0 events	6927	7813	6923	8032	15114
	4%	4%	3%	4%	8%
grade 1 events	94	80	103	121	120
	0%	0%	0%	0%	0%
grade 2 events	4827	5199	4730	4398	4512
	2%	3%	2%	2%	2%
grade 3 events	2118	2280	1964	2093	2121
	1%	1%	1%	1%	1%
grade 4 events	2036	2249	2045	1987	2118
	1%	1%	1%	1%	1%
grade 5 events	7344	7835	7033	8442	7886
	4%	4%	3%	4%	4%
grade 6 events	3987	4564	3797	3911	4416
	2%	2%	2%	2%	2%
grade 7 events	134257	137731	154629	149075	146056
	83%	82%	85%	83%	80%

2.2 Compared Parameters

Parameter	Planned	Actual	Parameter	Planned	Actual
Instrument	ACIS	ACIS	Obspar format version number	7	7
Detector	ACIS-01236	ACIS-01236	Obspar file type	PREDICTED	ACTUAL
Grating	NONE	NONE	Obspar update status	NONE	UPDATED
Data mode	VFAINT	VFAINT	CCD I0 on	Y	Y
Observation mode	POINTING	POINTING	CCD I1 on	Y	Y
[deg] Pointing RA	316.488130	316.5174774340908	CCD I2 on	Y	Y
[deg] Pointing Dec	-58.776802	-58.79970548316147	CCD I3 on	Y	Y
[deg] Pointing Roll	273.176426	273.4102047678648	CCD S0 on	N	N
[mm] SIM focus pos	-0.782348	-0.7809083437167272	CCD S1 on	N	N
[mm] SIM defocus	0	0.001439871863259334	CCD S2 on	O1	Y
[mm] SIM translation stage pos	-225.840463	-225.8433433320239	CCD S3 on	N	N
[mm] SIM translation stage offset	-7.752	-7.749109670905796	CCD S4 on	N	N
[s] Observation start time (MET)	406608950.184000	406607885.37339	CCD S5 on	N	N
Observation start date	2010-11-20T02:54:44	2010-11-20T02:38:05	Number of optional ACIS chips dropped	0	0
[s] Observation end time (MET)	406633950.184000	406635289.2623	On-chip summing requested	N	N
Observation end date	2010-11-20T09:51:24	2010-11-20T10:14:49	Subarray requested	NONE	NONE
Read mode	TIMED	TIMED	Alternating exposures requested	N	N
			[s] Primary exposure time	0.000000	3.1

2.3 Aspect



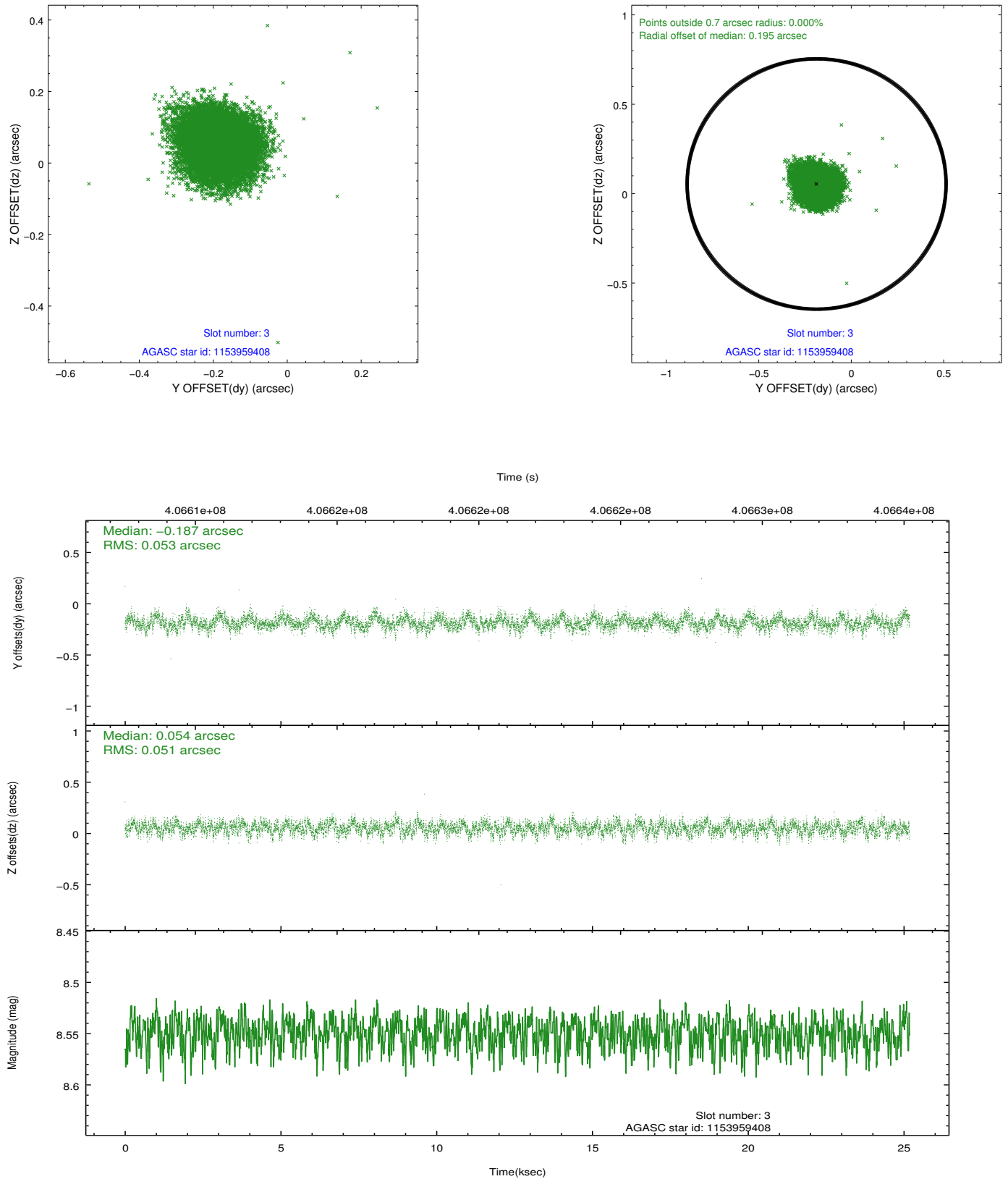


Slot Statistics

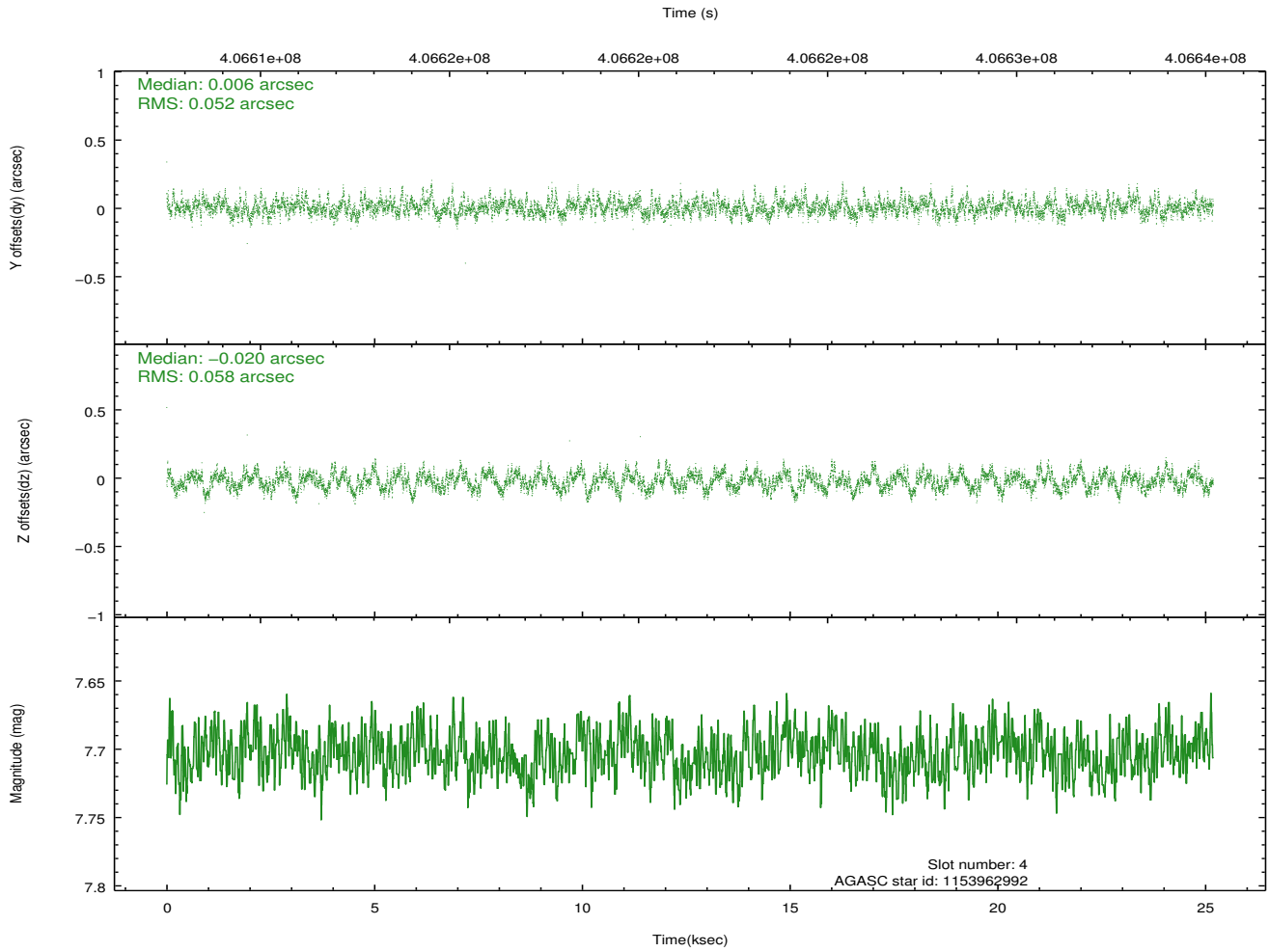
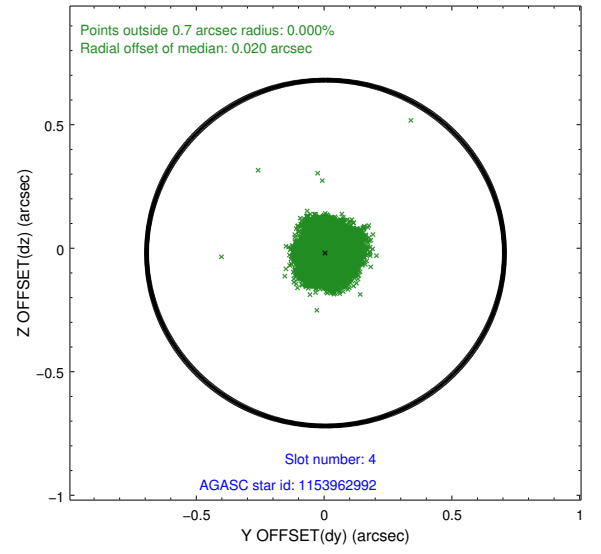
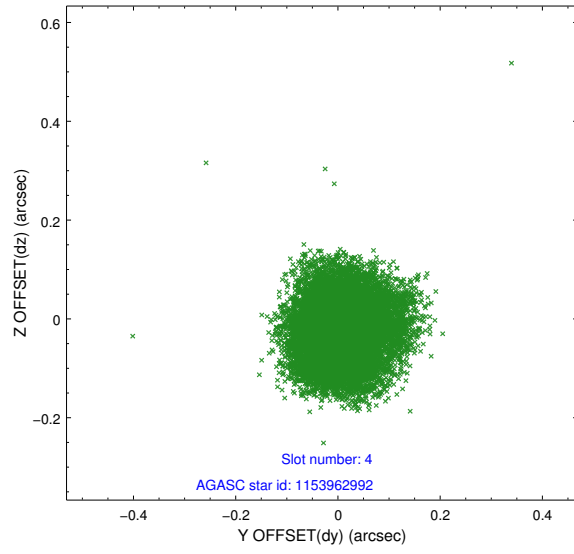
slot	status	id	mag	n_pts	med_dy	med_dz	dr1	dr2	ra	dec	mean_y	mean_z
0	FID	ACIS-I-1	7.06	6144	0.125	-0.072	0.029	0.048	0.000000	0.000000	922.72	-1000.54
1	FID	ACIS-I-5	7.05	6144	-0.246	0.118	0.019	0.025	0.000000	0.000000	-1825.73	897.00
2	FID	ACIS-I-6	7.06	6143	0.029	0.033	0.016	0.025	0.000000	0.000000	387.99	1541.61
3	GUIDE	1153959408	8.55	12285	-0.187	0.054	0.079	0.125	315.302789	-58.238579	-2038.76	-2136.25
4	GUIDE	1153962992	7.70	12285	0.006	-0.020	0.084	0.130	316.142628	-58.933175	528.76	-672.23
5	GUIDE	1153965336	8.15	12283	0.131	-0.015	0.065	0.113	315.243619	-58.733759	-261.24	-2314.16
6	GUIDE	1154095176	8.79	12270	0.122	-0.130	0.080	0.125	316.791051	-59.049712	1013.79	505.40
7	GUIDE	1154096688	7.32	12284	-0.074	0.112	0.073	0.120	317.602188	-59.407740	2398.44	1911.89

2.4 Star Slots

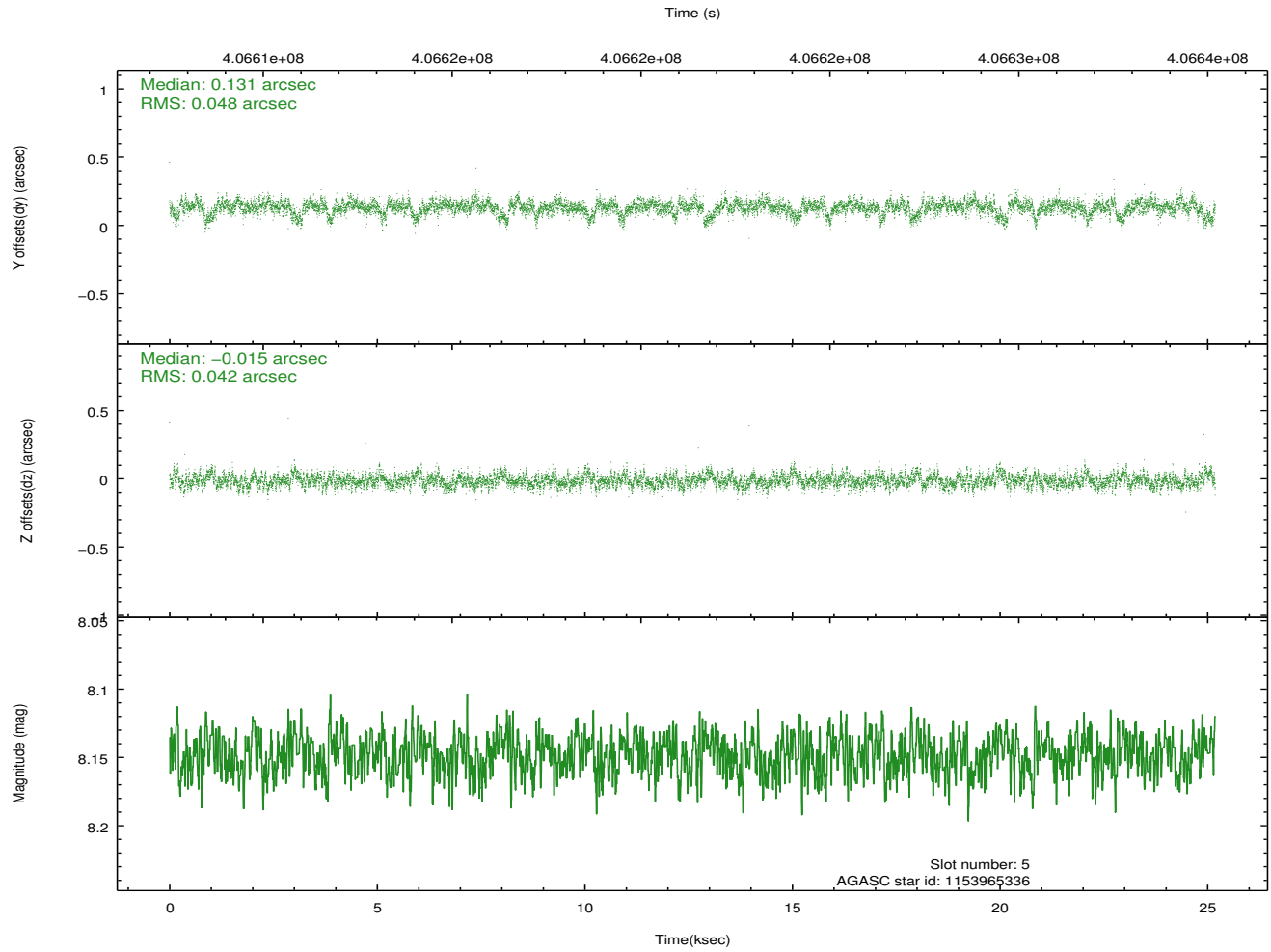
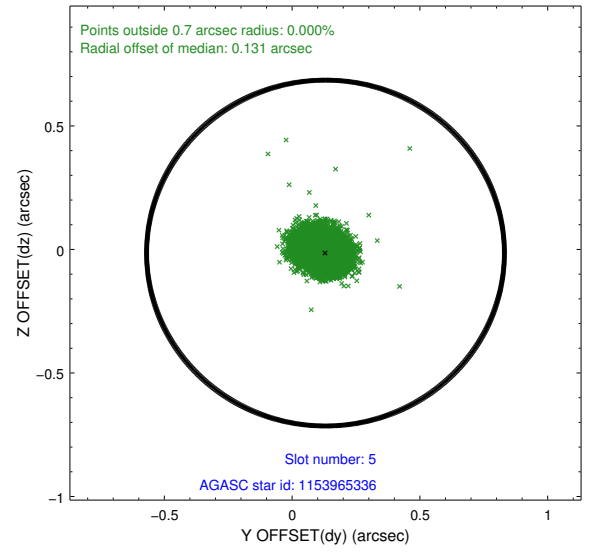
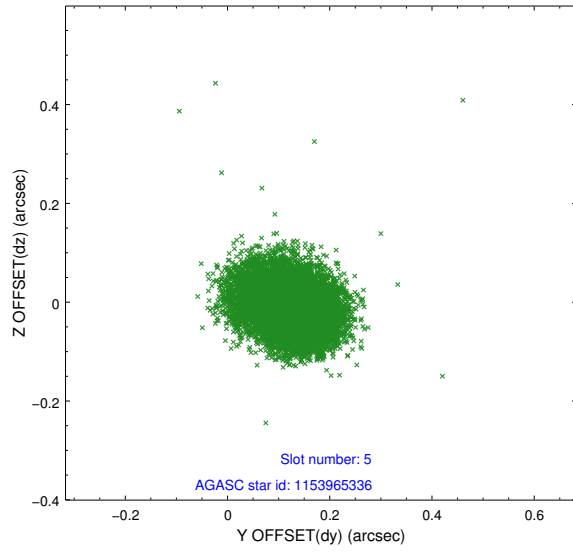
2.4.1 Slot 3



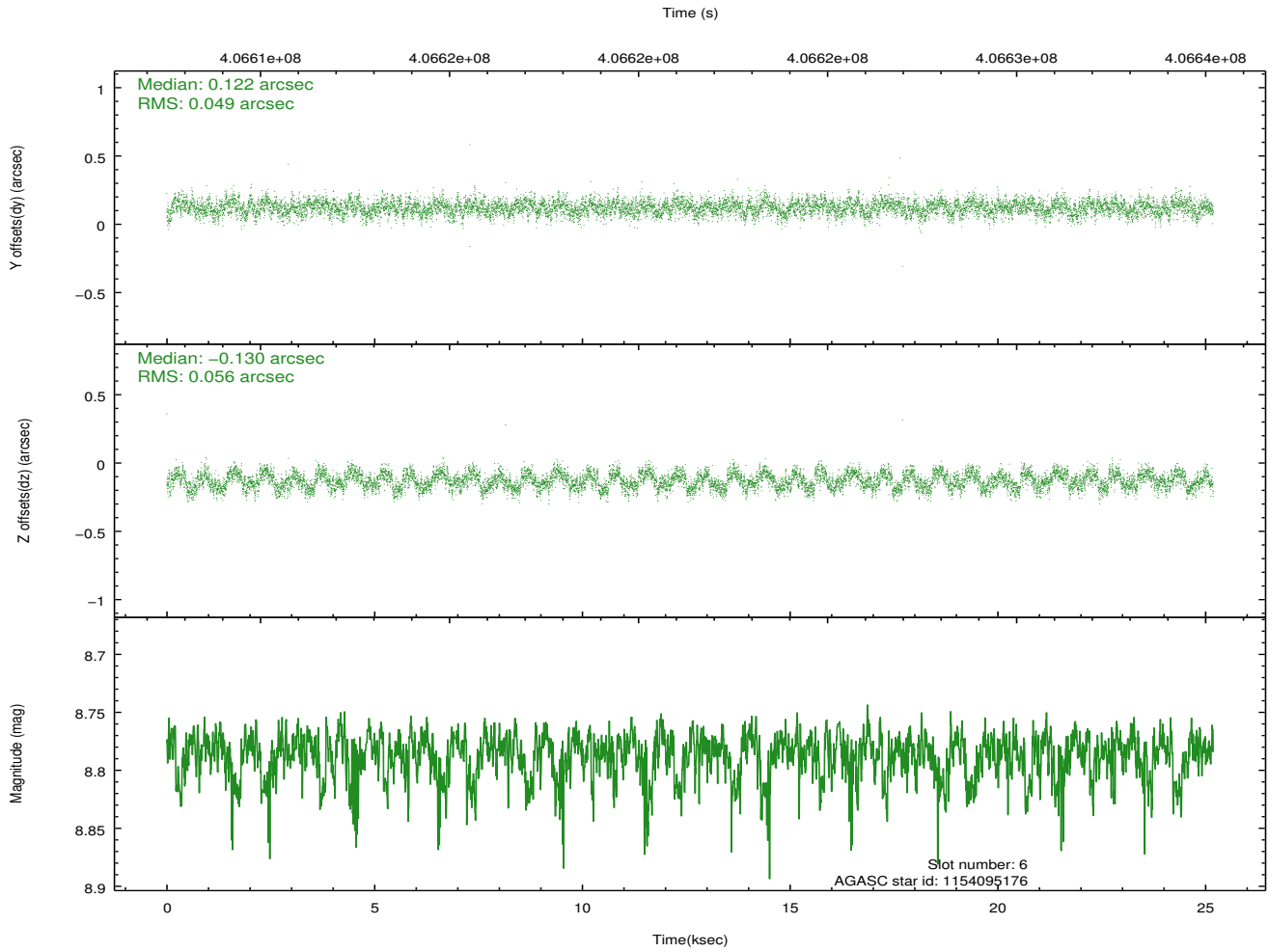
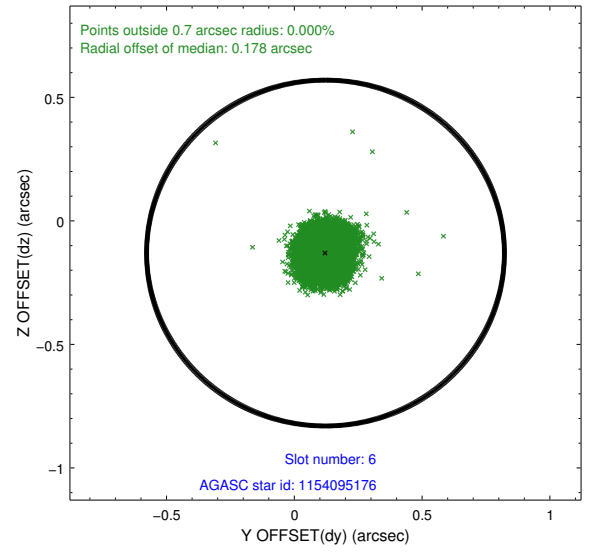
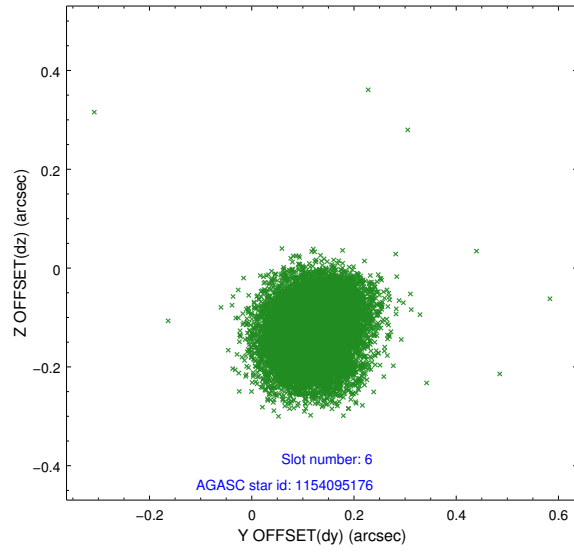
2.4.2 Slot 4



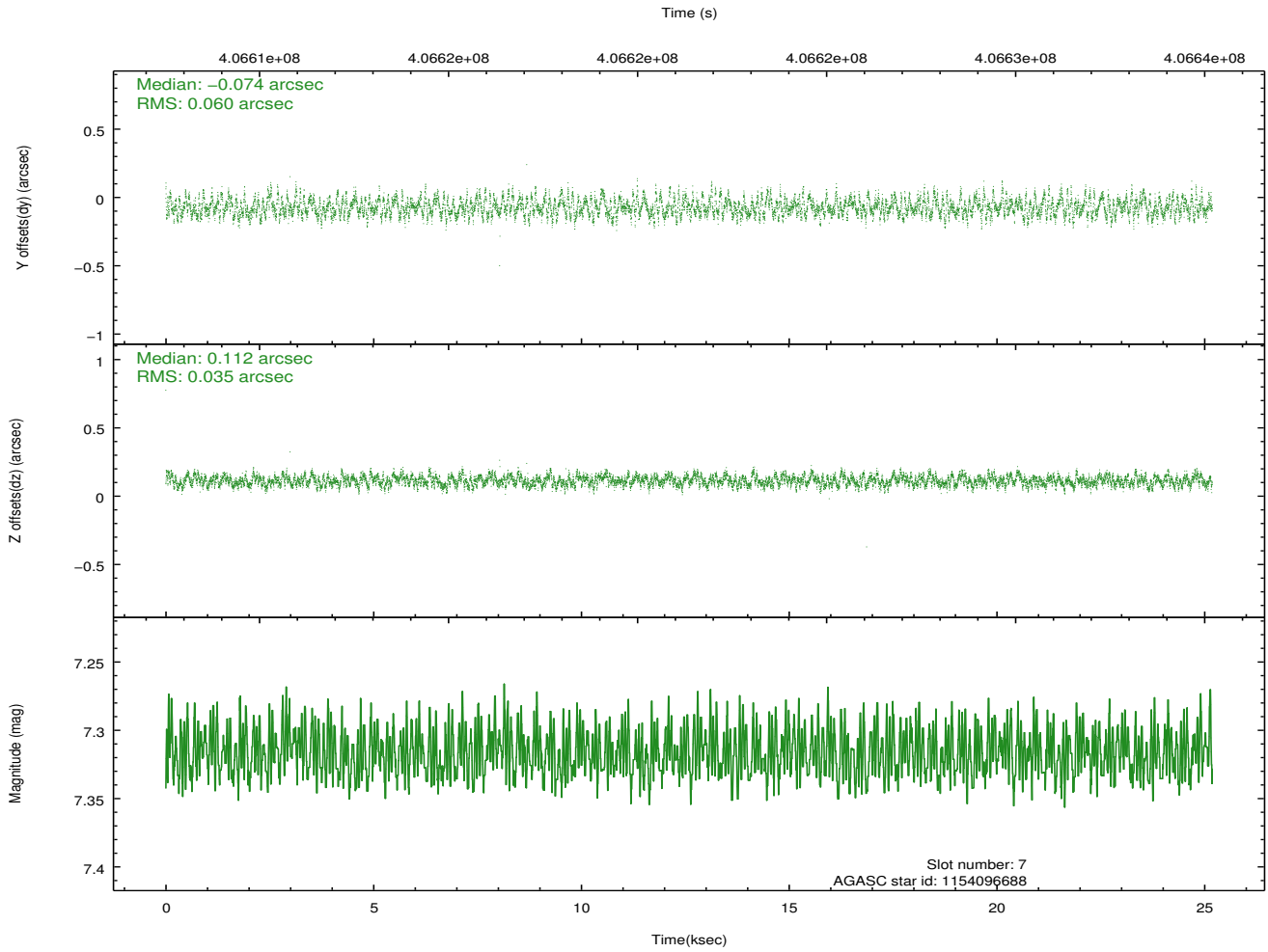
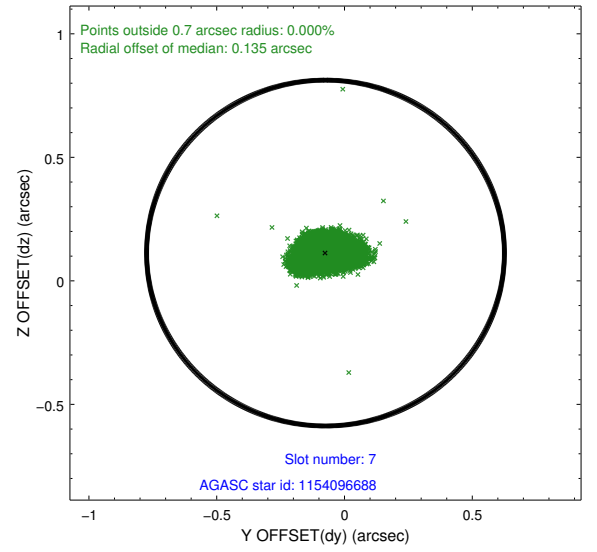
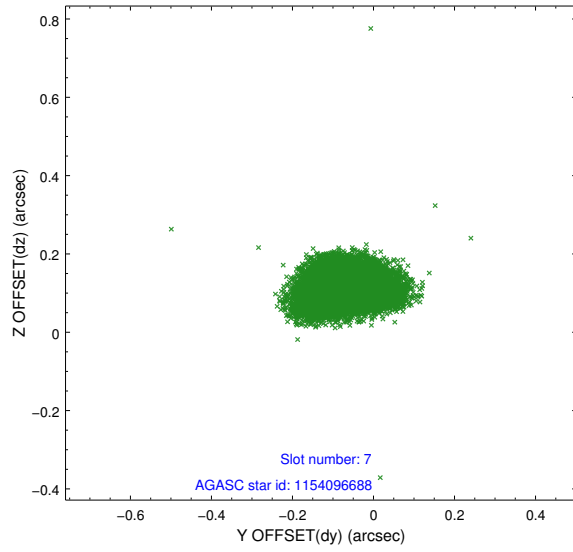
2.4.3 Slot 5



2.4.4 Slot 6

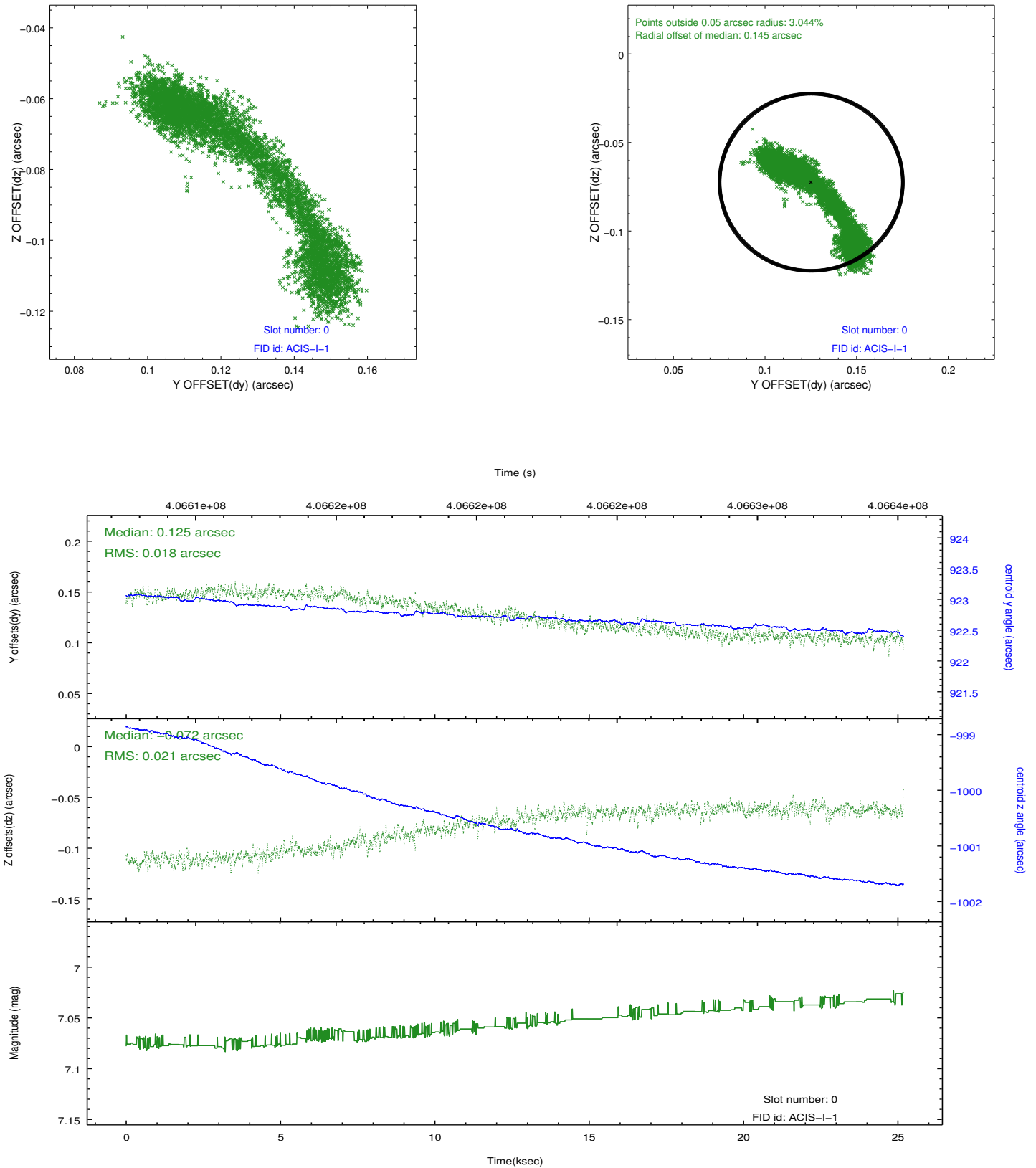


2.4.5 Slot 7

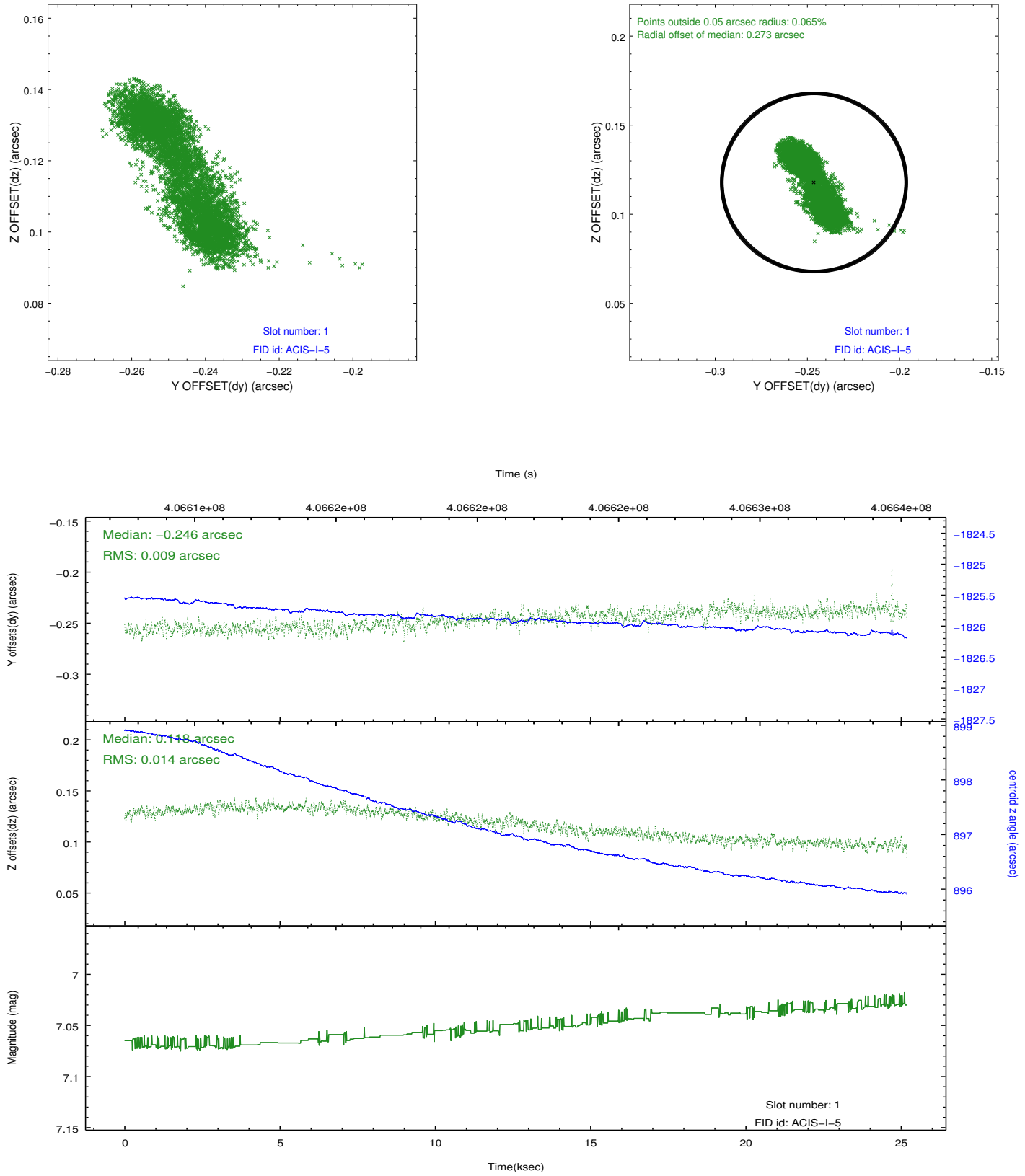


2.5 FID Slots

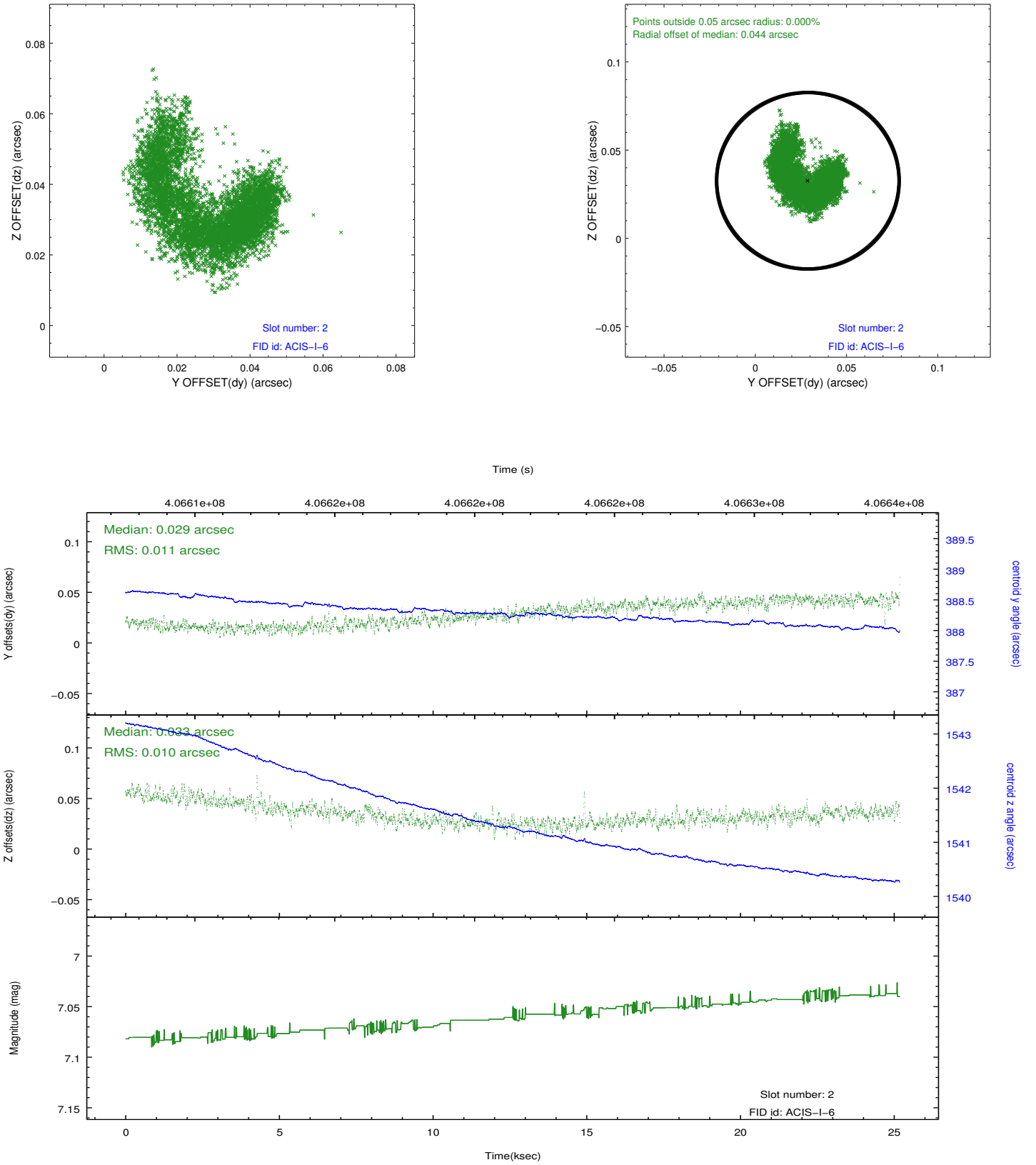
2.5.1 Slot 0



2.5.2 Slot 1



2.5.3 Slot 2



A Summary

A.1 Status

V&V Scientist	Beth Sundheim
V&V Date (YYYY-MM-DD)	2012.07.17
V&V Edition	1
V&V Disposition and Status	OK
V&V Charge Time	25.044005214512

A.2 Comments