

V&V Reference Report

L2 ASCDS Version : 8.4.5

Observation 12175 - L2 Version 2
Chandra X-Ray Center

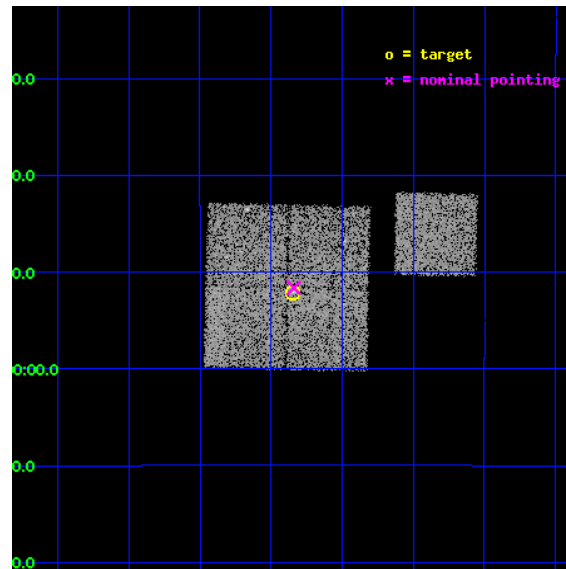
L2 Processing Date : Jul 2 2012

Contents

1	Front	2
2	OBI	3
2.1	OBI	3
2.1.1	Images	3
2.1.2	Bias	3
2.1.3	Parameters	4
2.1.4	Events	4
2.2	Compared Parameters	5
2.3	Aspect	6
2.4	Star Slots	9
2.4.1	Slot 3	9
2.4.2	Slot 4	10
2.4.3	Slot 5	11
2.4.4	Slot 6	12
2.4.5	Slot 7	13
2.5	FID Slots	14
2.5.1	Slot 0	14
2.5.2	Slot 1	15
2.5.3	Slot 2	16
A	Summary	17
A.1	Status	17
A.2	Comments	17

1 Front

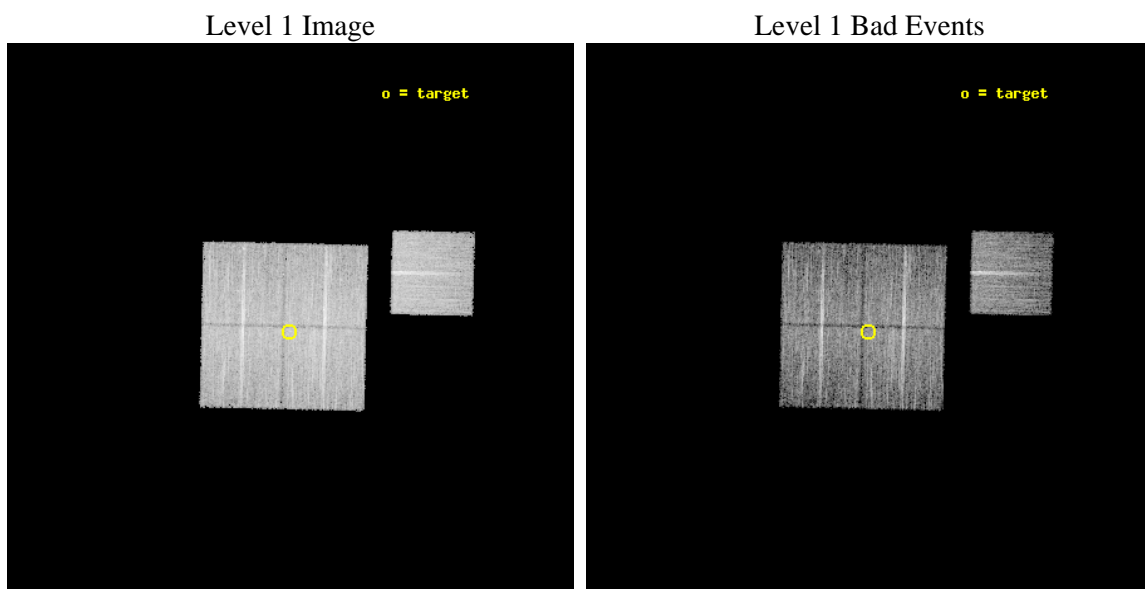
seq_num	800941	Sequence number
obs_id	12175	Observation id
title	CLoGS I. - A Complete Local-volume Group Survey	Proposal title
observer	Dr. Stephen Murray	Principal investigator
object	LGG027	Source name
dtcycle	0	
cycle	P	events from which exps? Prim/Second/Both
ra_targ	22.8375	Observer's specified target RA [deg]
dec_targ	-6.868333	Observer's specified target Dec [deg]
ra_nom	22.834923307768	Nominal RA [deg]
dec_nom	-6.8606797755364	Nominal Dec [deg]
roll_nom	91.35786073642	Nominal Roll [deg]
revision	2	Processing version of data
ontime	10052.260276198	Sum of GTIs [s]
livetime	9920.9200953235	Livetime [s]
ontime0	10048.996185899	Sum of GTIs [s]
ontime1	10052.178196192	Sum of GTIs [s]
ontime2	10052.219236195	Sum of GTIs [s]
ontime3	10052.260276198	Sum of GTIs [s]
ontime6	10052.096116185	Sum of GTIs [s]
l2events	35327	Number of level 2 events



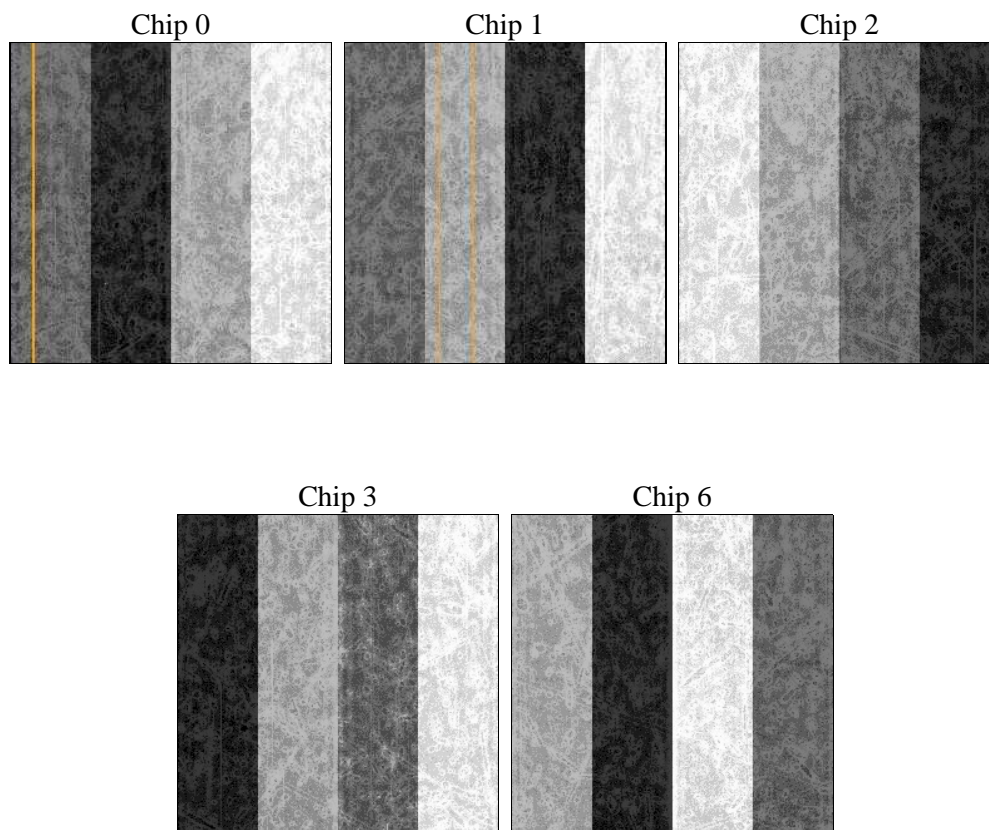
2 OBI

2.1 OBI

2.1.1 Images



2.1.2 Bias



2.1.3 Parameters

obi_num	0	Obi number	sched_exp_time	10000.000000	[s] Scheduled observation exposure time
ascdsver	8.4.5	Processing system revision	ontime	10052.260276198	Sum of GTIs [s]
caldbver	4.5.0	 	ontime0	10048.996185899	Sum of GTIs [s]
date	2012-07-02T18:33:58	Date and time of file creation	ontime1	10052.178196192	Sum of GTIs [s]
revision	2	Processing version of data	ontime2	10052.219236195	Sum of GTIs [s]
			ontime3	10052.260276198	Sum of GTIs [s]
			ontime6	10052.096116185	Sum of GTIs [s]
			l1events	365484	Number of level 1 events

2.1.4 Events

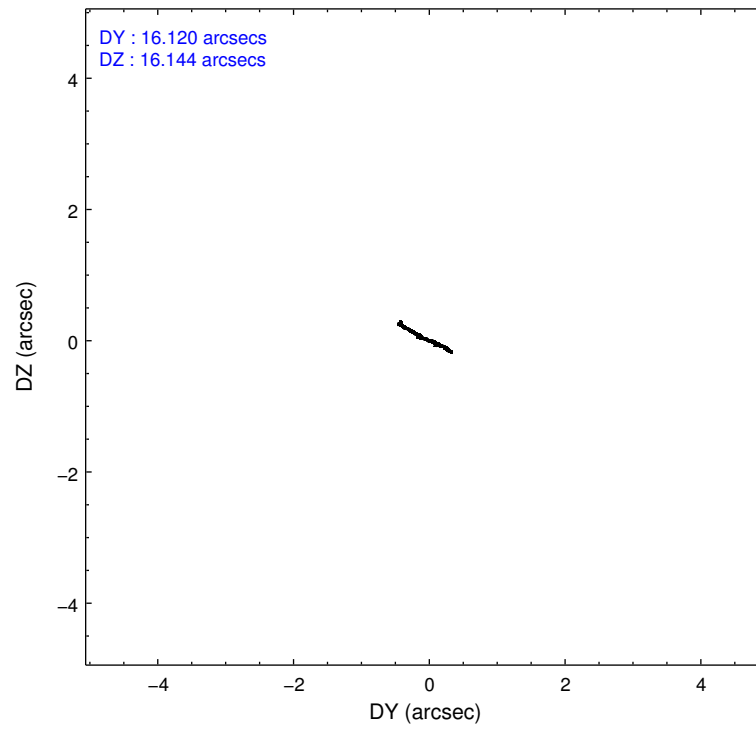
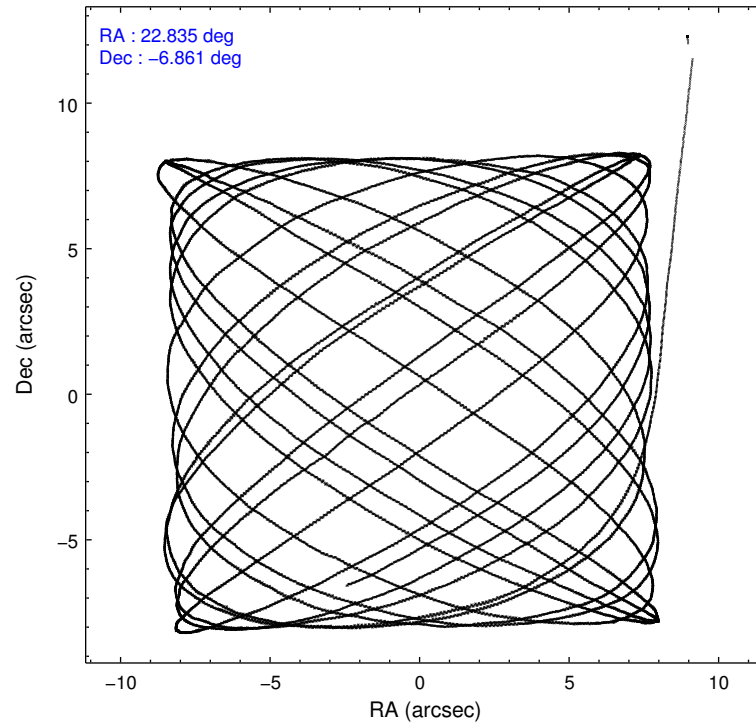
	ccd 0	ccd 1	ccd 2	ccd 3	ccd 6
level 1 events	69636	69624	76616	73862	75746
rejected events	61066	60249	68442	65994	67328
rejected %	87%	86%	89%	89%	88%

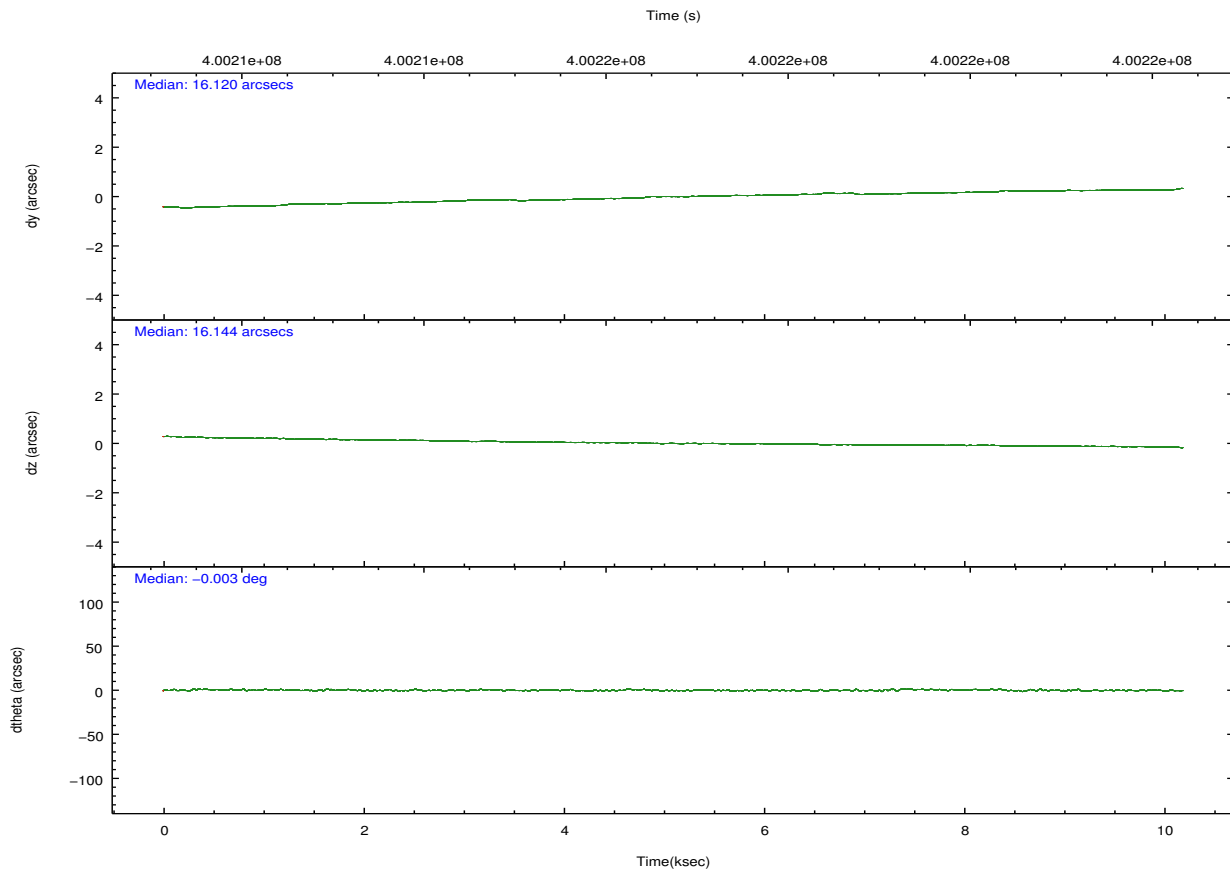
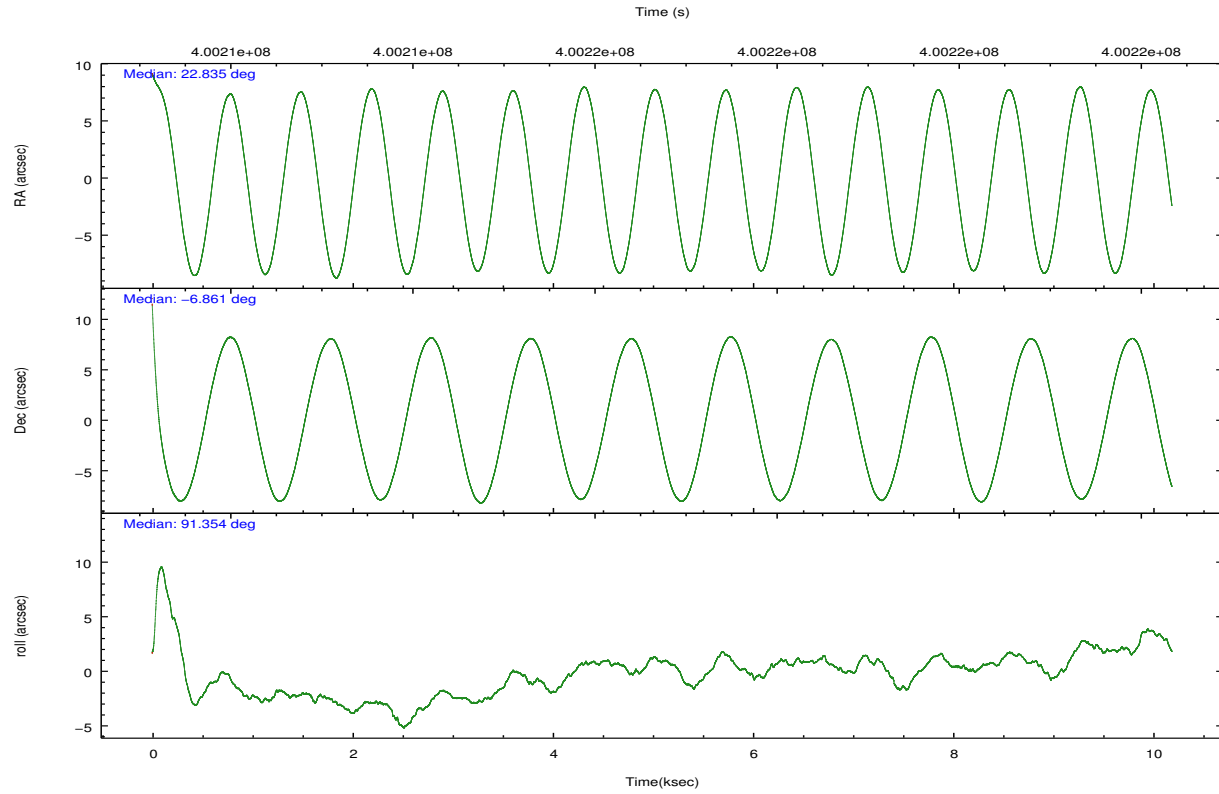
	ccd 0	ccd 1	ccd 2	ccd 3	ccd 6
grade 0 events	3251	3326	3038	2922	3008
	4%	4%	3%	3%	3%
grade 1 events	42	29	43	56	40
	0%	0%	0%	0%	0%
grade 2 events	2035	2245	1968	1750	1830
	2%	3%	2%	2%	2%
grade 3 events	896	975	784	806	902
	1%	1%	1%	1%	1%
grade 4 events	790	927	897	832	849
	1%	1%	1%	1%	1%
grade 5 events	3123	3136	2800	3309	3288
	4%	4%	3%	4%	4%
grade 6 events	1603	1910	1491	1562	1833
	2%	2%	1%	2%	2%
grade 7 events	57896	57076	65595	62625	63996
	83%	81%	85%	84%	84%

2.2 Compared Parameters

Parameter	Planned	Actual	Parameter	Planned	Actual
Instrument	ACIS	ACIS	Obspar format version number	7	7
Detector	ACIS-01236	ACIS-01236	Obspar file type	PREDICTED	ACTUAL
Grating	NONE	NONE	Obspar update status	NONE	UPDATED
Data mode	VFAINT	VFAINT	CCD I0 on	Y	Y
Observation mode	POINTING	POINTING	CCD I1 on	Y	Y
[deg] Pointing RA	22.849410	22.83492330776819	CCD I2 on	Y	Y
[deg] Pointing Dec	-6.884096	-6.860679775536438	CCD I3 on	Y	Y
[deg] Pointing Roll	91.150920	91.35786073642041	CCD S0 on	N	N
[mm] SIM focus pos	-0.782348	-0.7809083437167272	CCD S1 on	N	N
[mm] SIM defocus	0	0.001439871863259334	CCD S2 on	O1	Y
[mm] SIM translation stage pos	-233.592463	-233.5899487761303	CCD S3 on	N	N
[mm] SIM translation stage offset	0	-0.002504226799430853	CCD S4 on	N	N
[s] Observation start time (MET)	400211828.184000	400210853.89451	CCD S5 on	N	N
Observation start date	2010-09-07T01:56:02	2010-09-07T01:40:53	Number of optional ACIS chips dropped	0	0
[s] Observation end time (MET)	400221828.184000	400222350.2951	On-chip summing requested	N	N
Observation end date	2010-09-07T04:42:42	2010-09-07T04:52:30	Subarray requested	NONE	NONE
Read mode	TIMED	TIMED	Alternating exposures requested	N	N
			[s] Primary exposure time	0.000000	3.1

2.3 Aspect



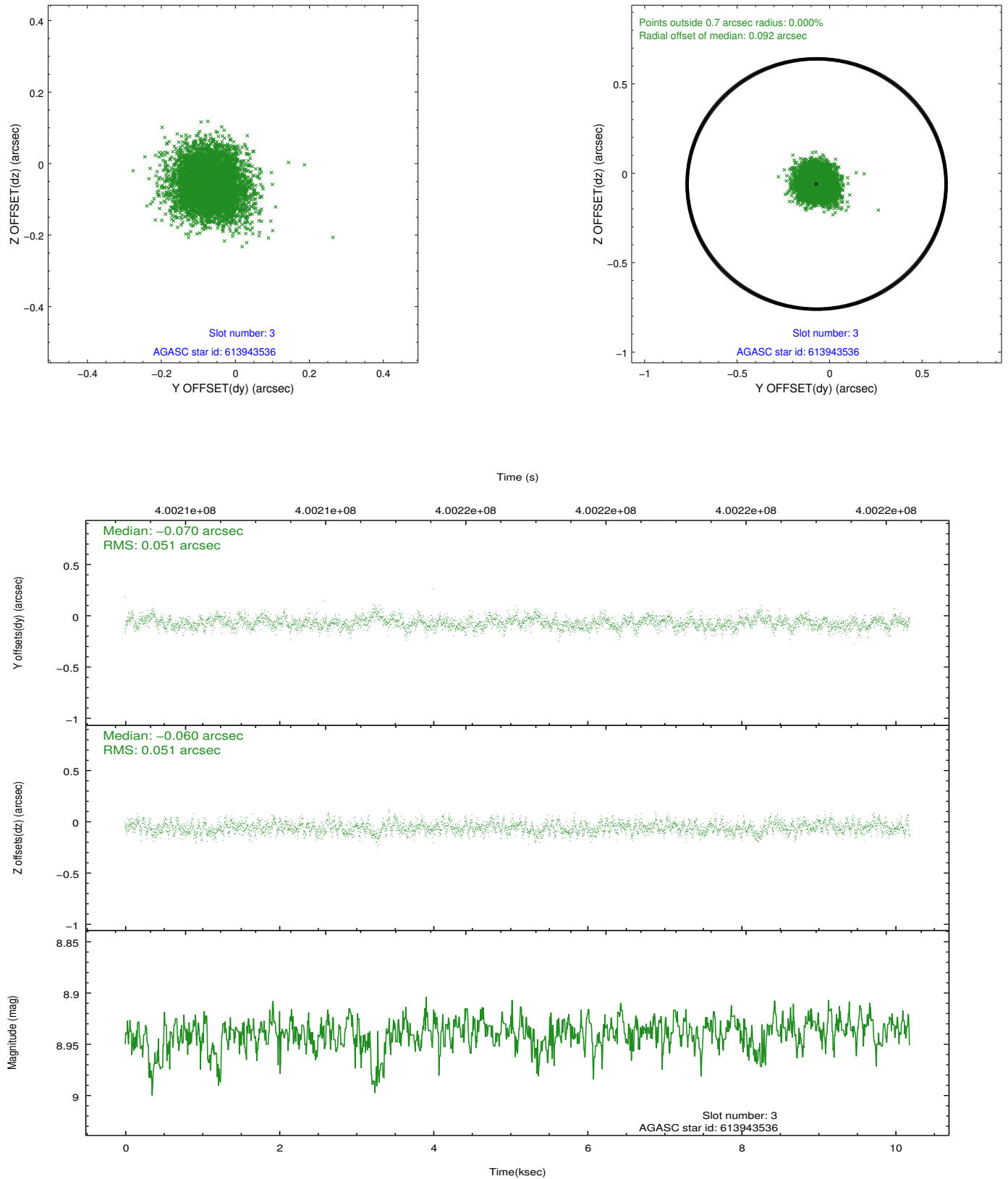


Slot Statistics

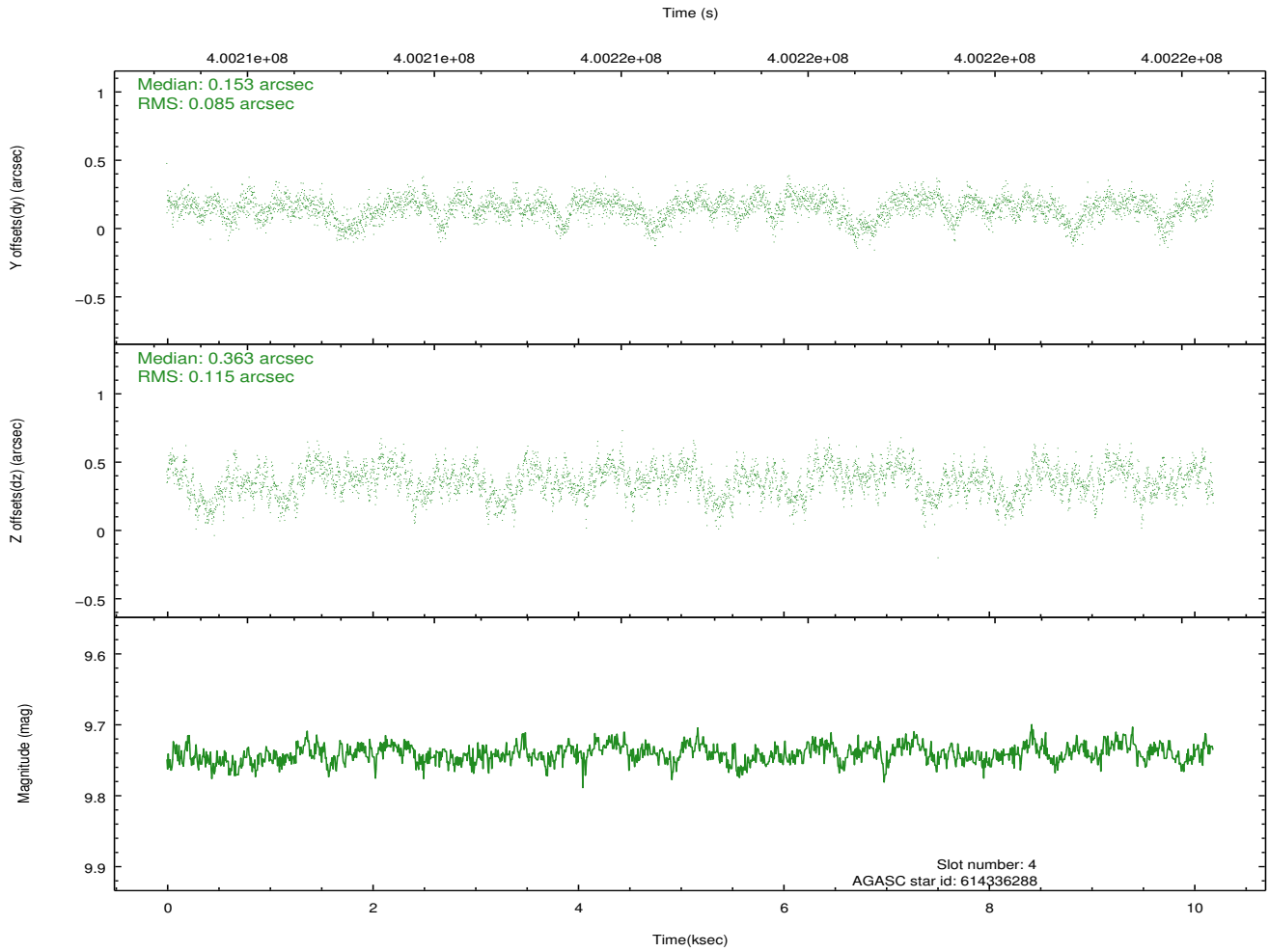
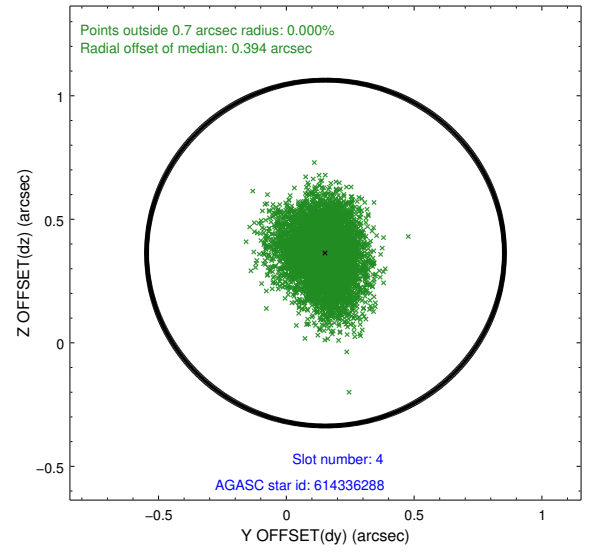
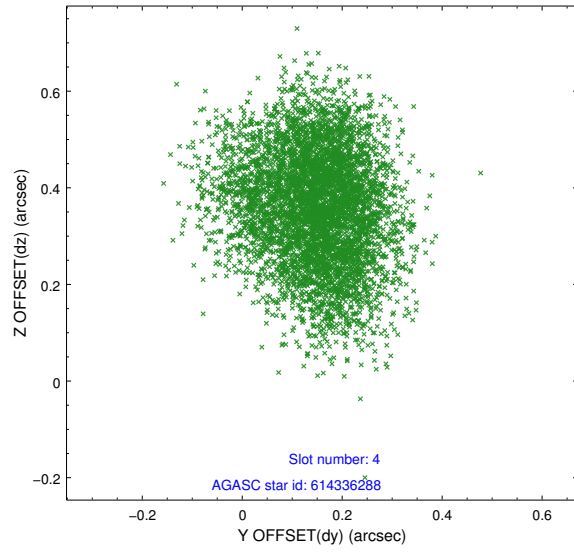
slot	status	id	mag	n_pts	med_dy	med_dz	dr1	dr2	ra	dec	mean_y	mean_z
0	FID	ACIS-I-1	7.03	2486	-0.010	-0.081	0.010	0.022	0.000000	0.000000	923.35	-839.81
1	FID	ACIS-I-4	6.96	2486	0.134	0.084	0.014	0.022	0.000000	0.000000	2143.80	1059.91
2	FID	ACIS-I-5	7.02	2486	-0.224	0.067	0.012	0.019	0.000000	0.000000	-1824.22	1058.29
3	GUIDE	613943536	8.94	4969	-0.070	-0.060	0.077	0.125	22.406670	-6.600016	1053.63	1562.57
4	GUIDE	614336288	9.74	4963	0.153	0.363	0.154	0.242	23.348285	-7.191979	-1144.17	-1759.40
5	GUIDE	614337544	9.58	4966	0.152	-0.265	0.126	0.204	22.518626	-6.994220	-372.98	1189.13
6	GUIDE	614341944	9.55	4943	-0.144	-0.114	0.124	0.203	22.528495	-6.532122	1289.47	1122.44
7	GUIDE	613941280	9.69	4962	-0.074	0.083	0.133	0.213	22.476588	-6.681378	756.22	1318.59

2.4 Star Slots

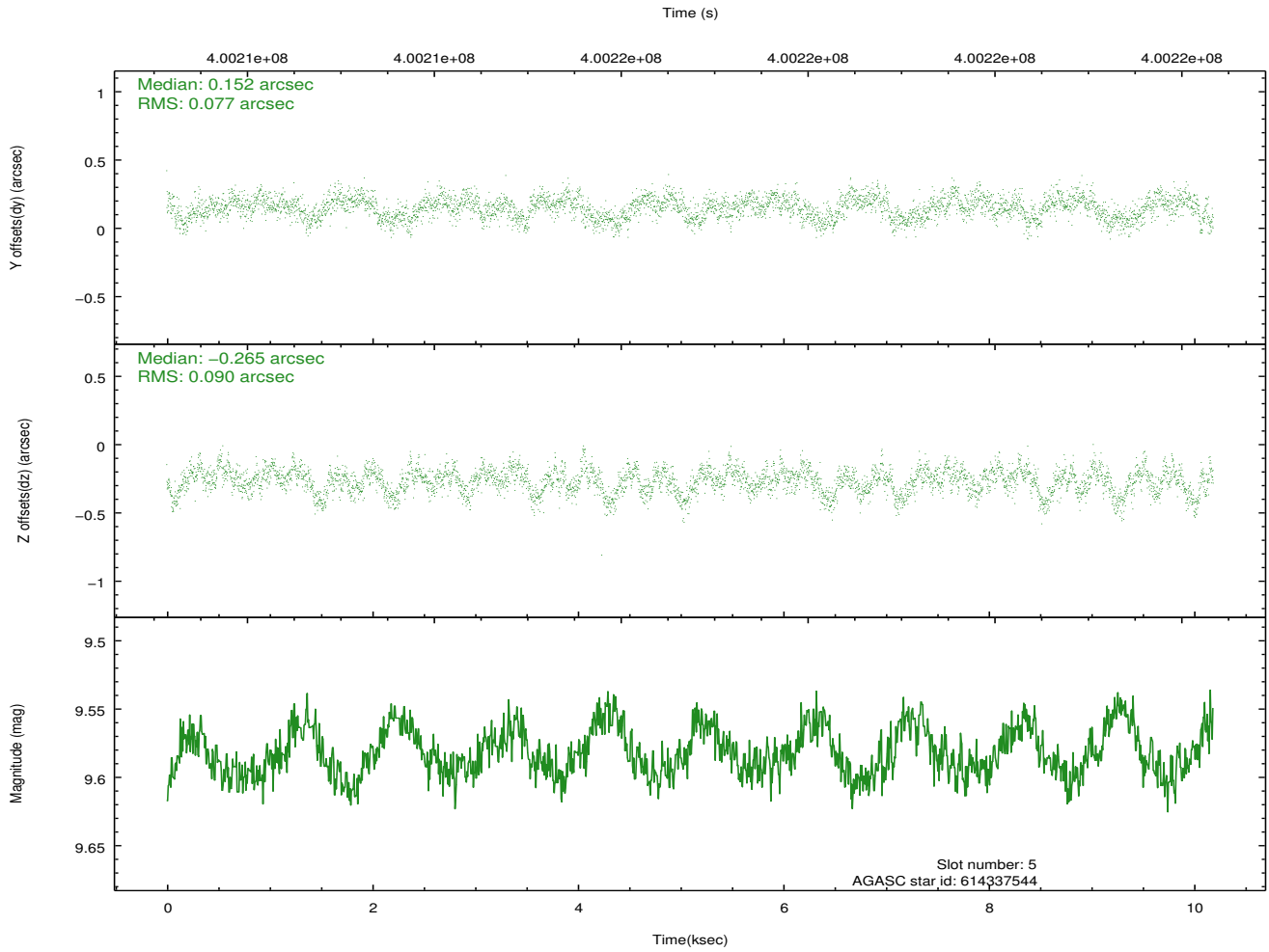
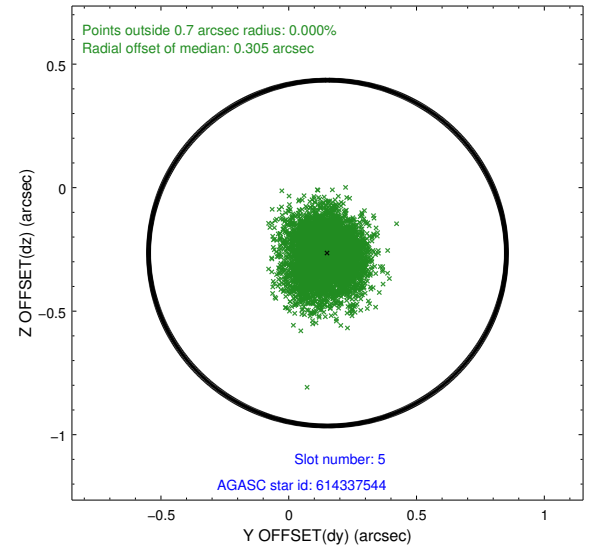
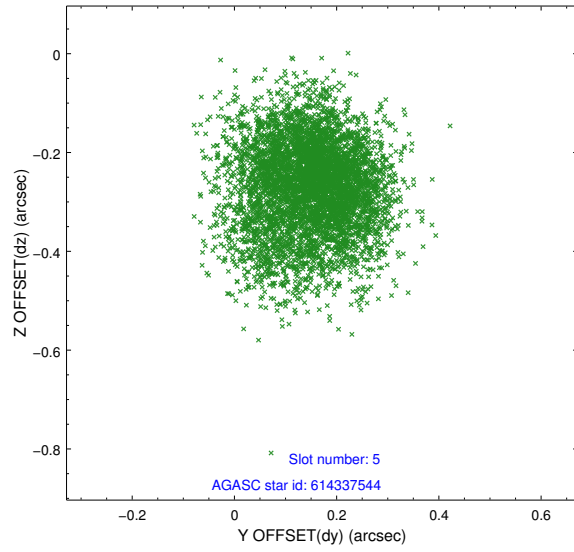
2.4.1 Slot 3



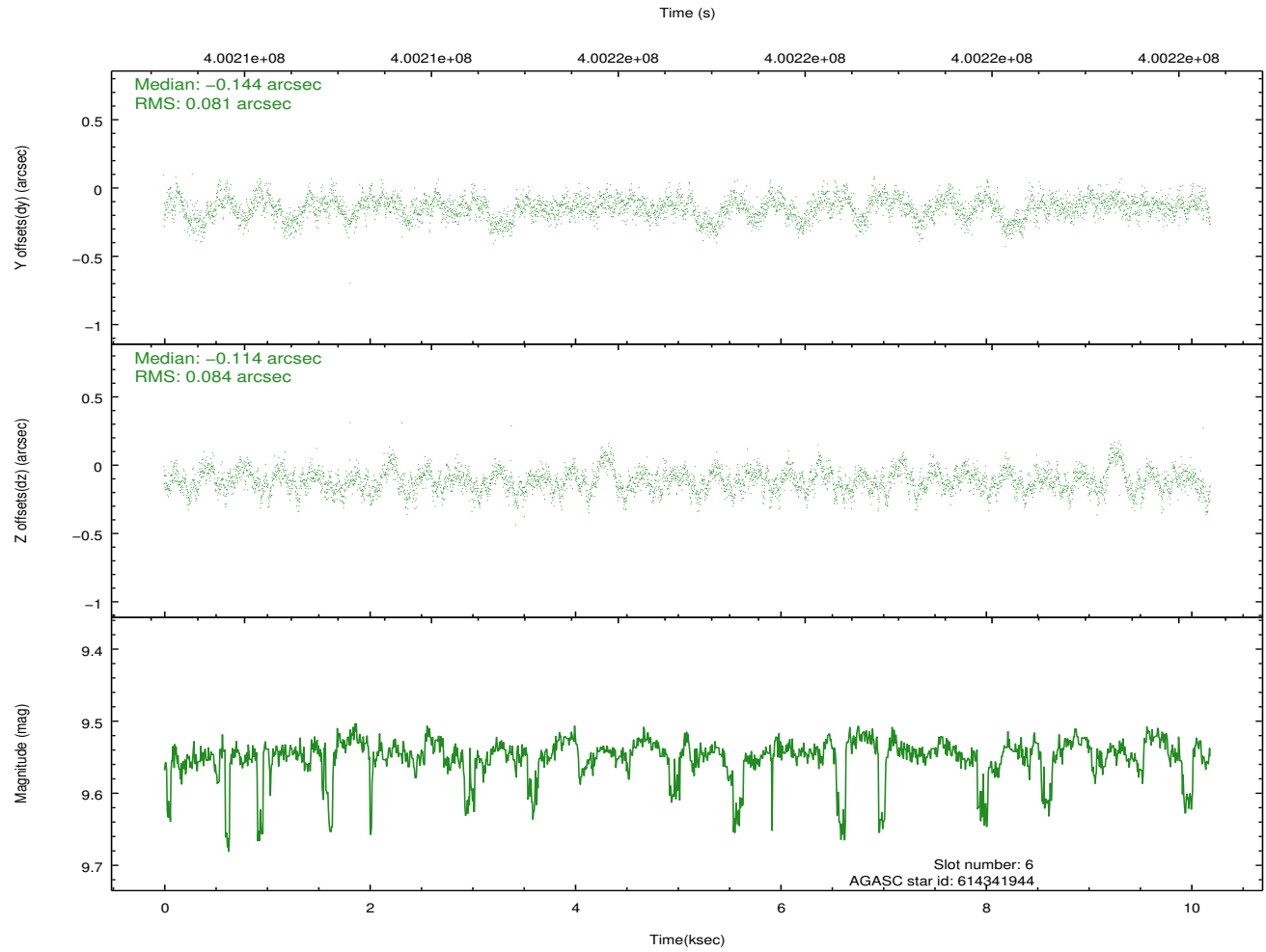
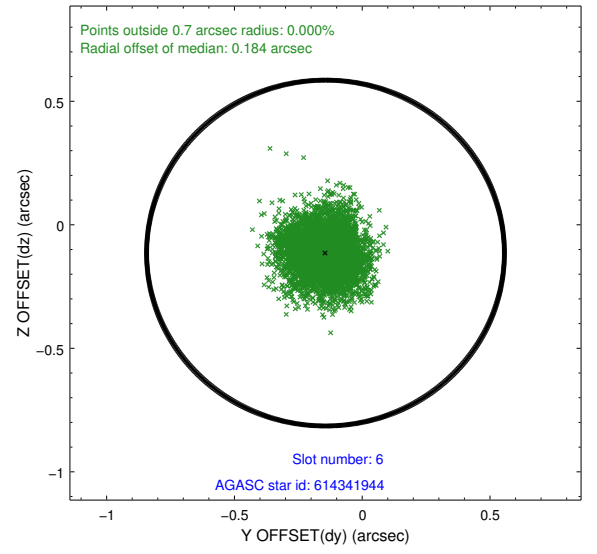
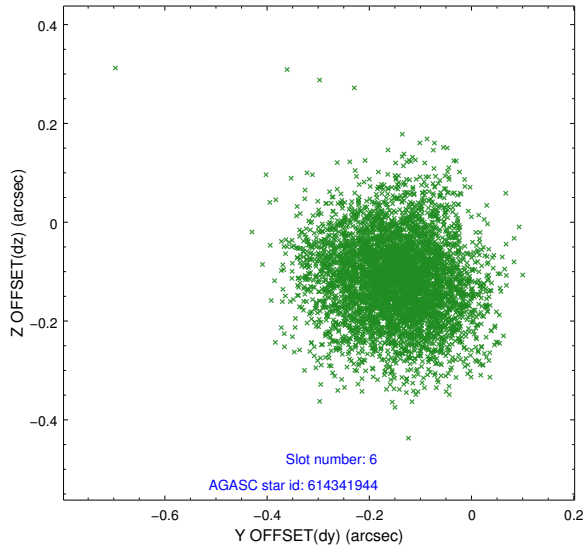
2.4.2 Slot 4



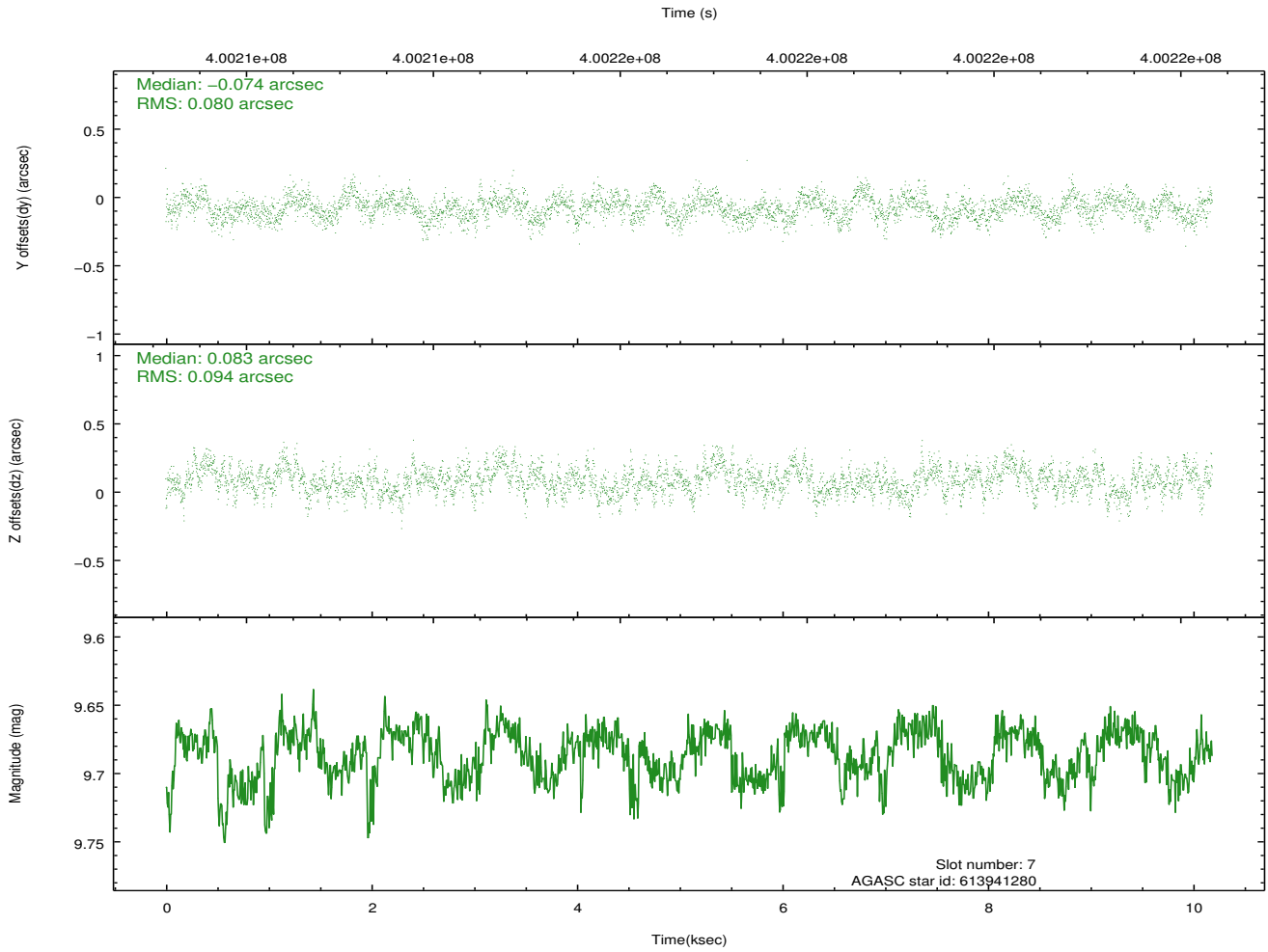
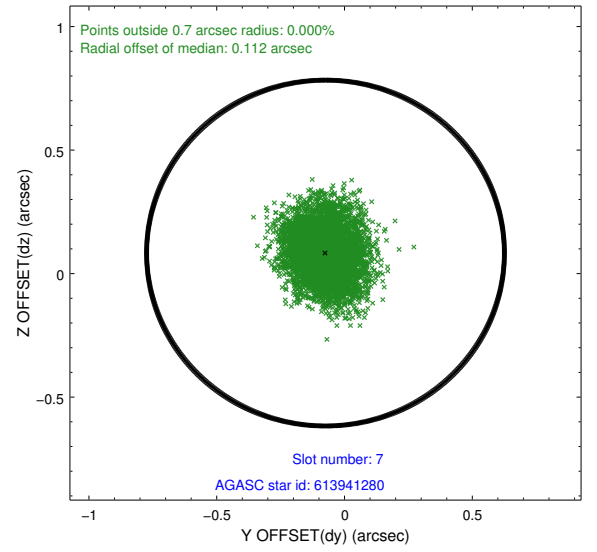
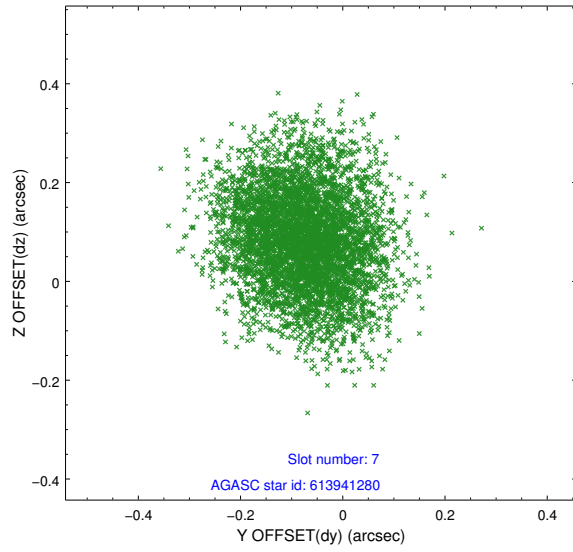
2.4.3 Slot 5



2.4.4 Slot 6

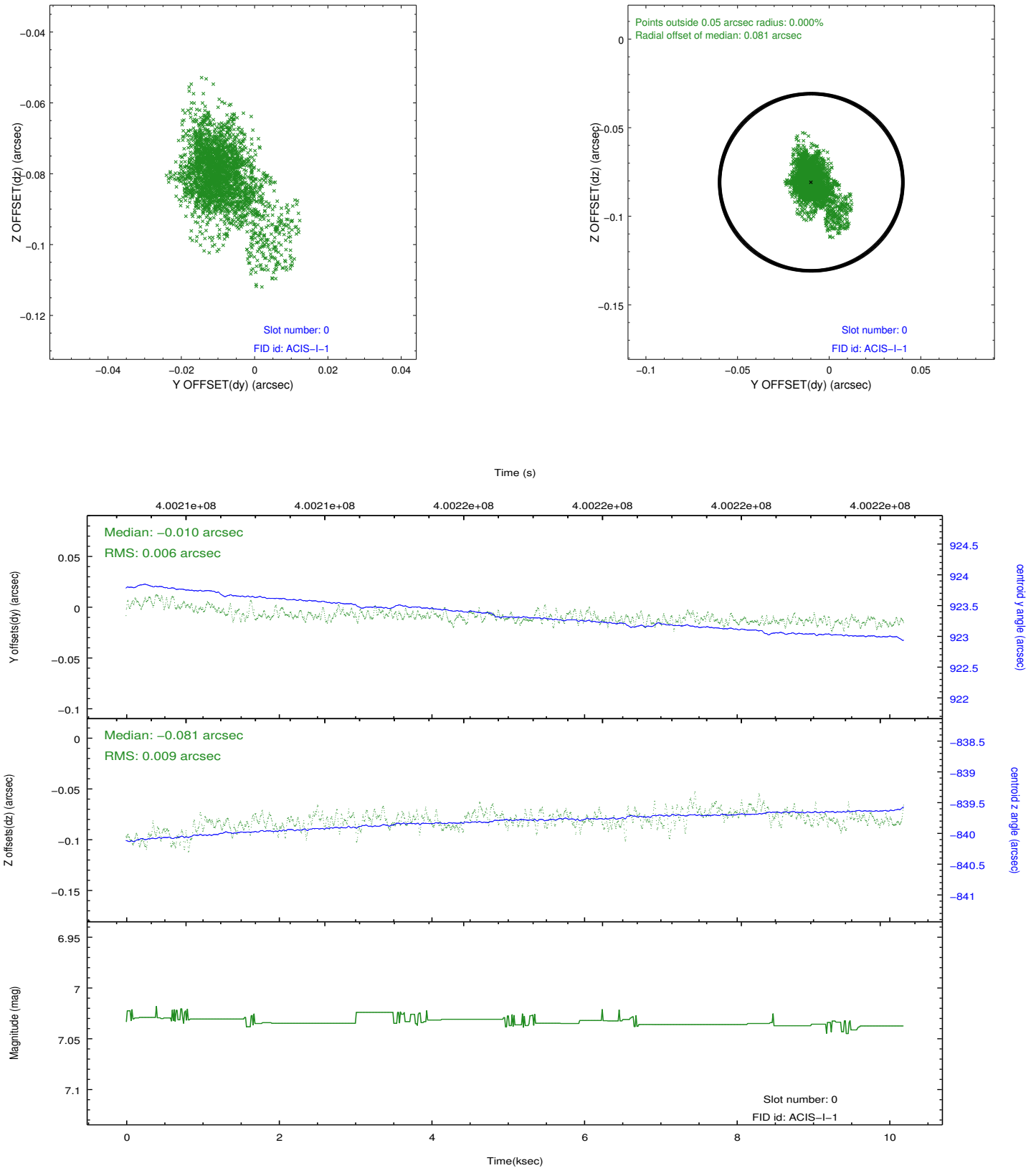


2.4.5 Slot 7

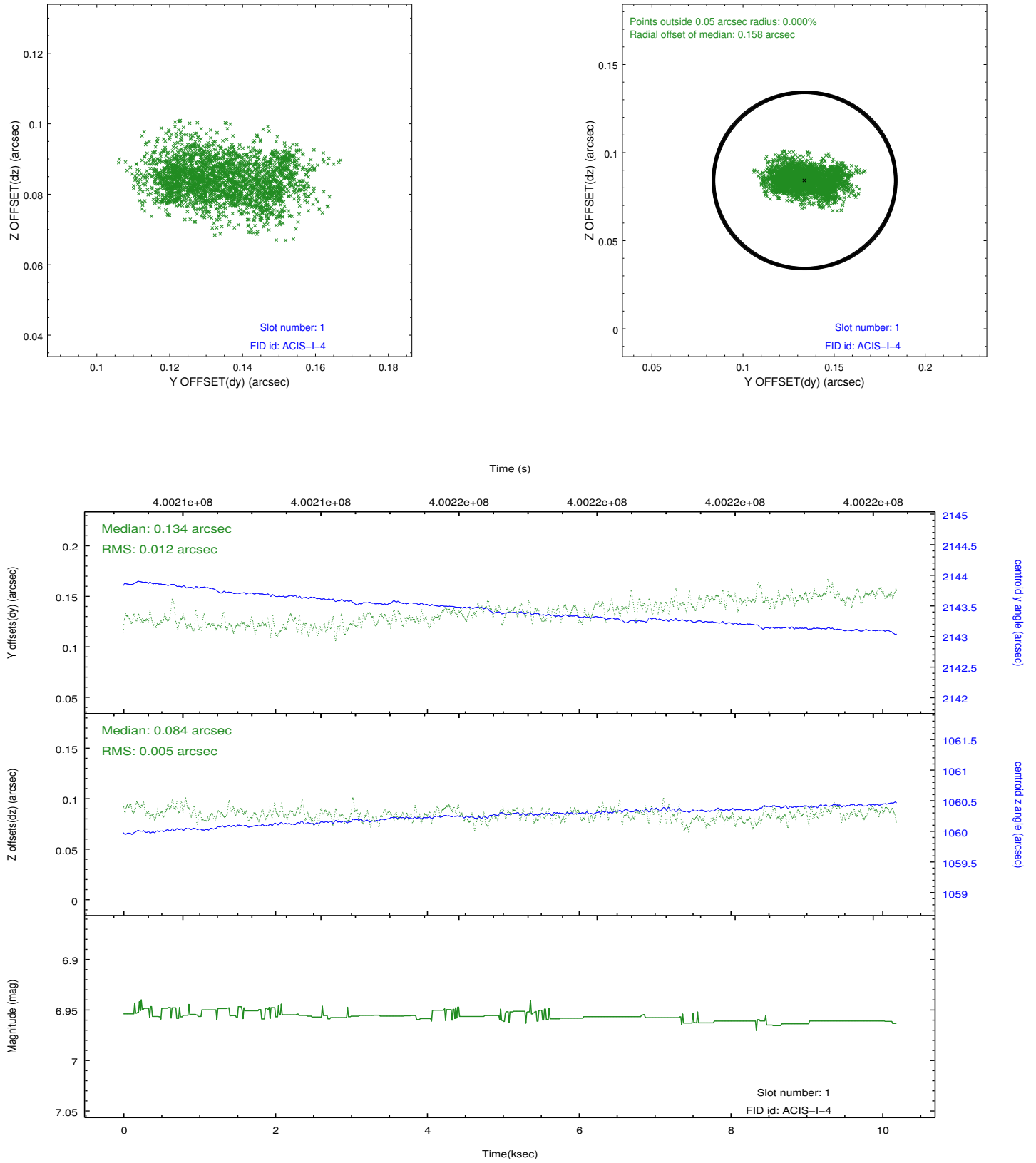


2.5 FID Slots

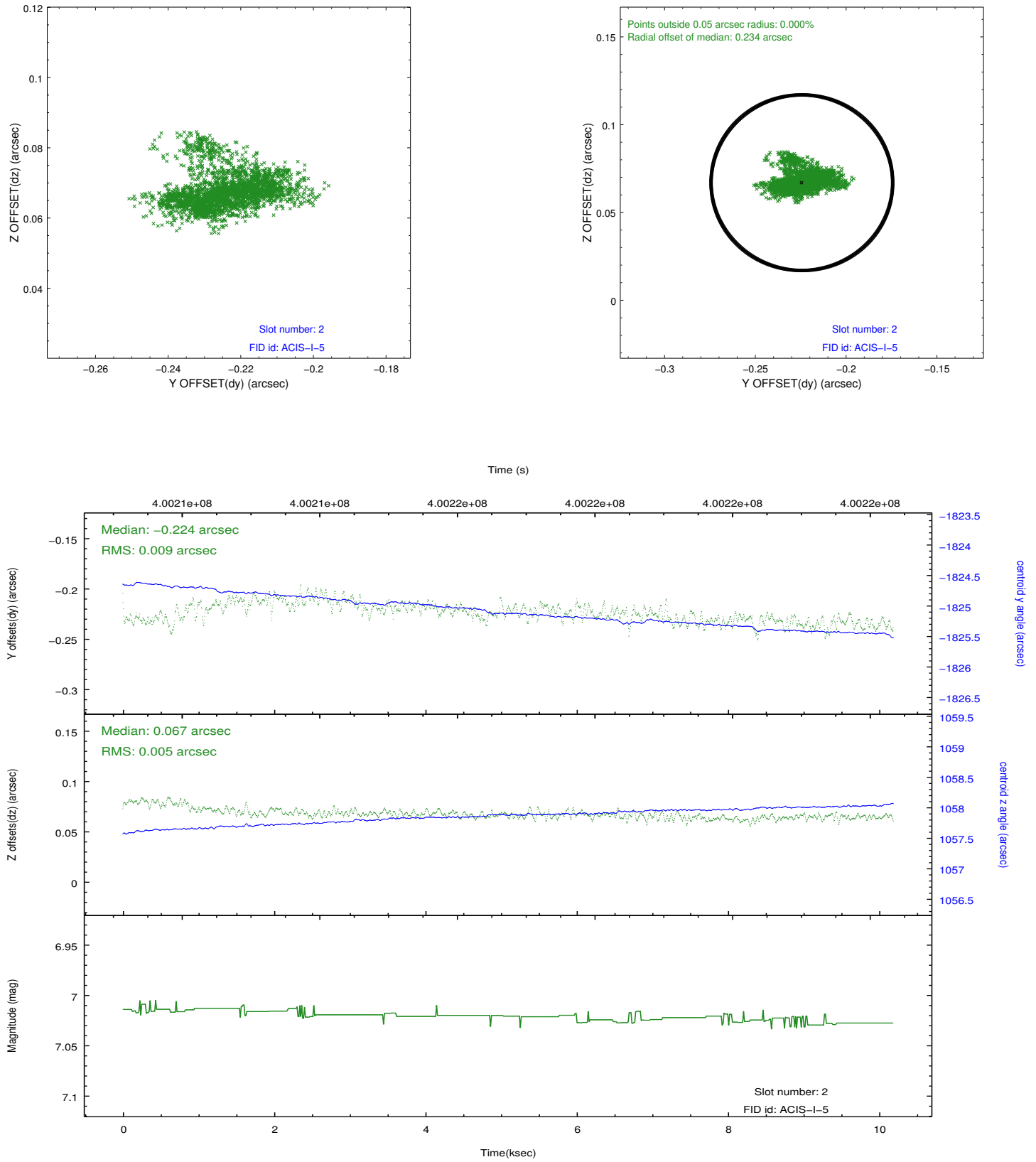
2.5.1 Slot 0



2.5.2 Slot 1



2.5.3 Slot 2



A Summary

A.1 Status

V&V Scientist	Jen Lauer
V&V Date (YYYY-MM-DD)	2012.07.11
V&V Edition	1
V&V Disposition and Status	OK
V&V Charge Time	10.052260279357

A.2 Comments