

# V&V Reference Report

## L2 ASCDS Version : 8.4.5

Observation 12741 - L2 Version 2  
Chandra X-Ray Center

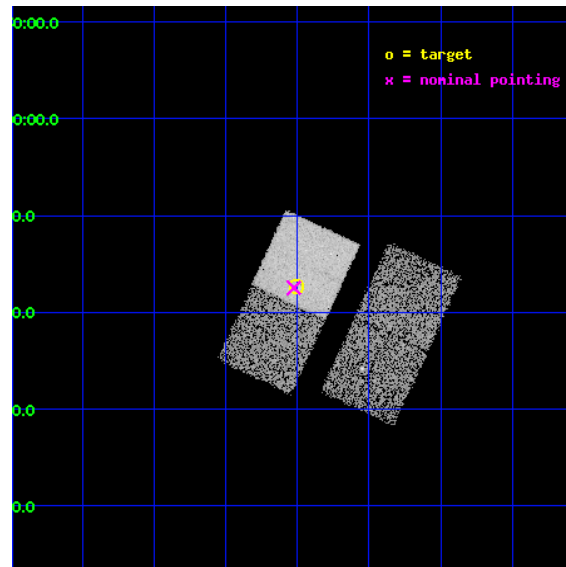
L2 Processing Date : Jul 7 2012

## Contents

<b>1</b>	<b>Front</b>	<b>2</b>
<b>2</b>	<b>OBI</b>	<b>3</b>
2.1	OBI . . . . .	3
2.1.1	Images . . . . .	3
2.1.2	Bias . . . . .	3
2.1.3	Parameters . . . . .	4
2.1.4	Events . . . . .	4
2.2	Compared Parameters . . . . .	5
2.3	Aspect . . . . .	6
2.4	Star Slots . . . . .	9
2.4.1	Slot 3 . . . . .	9
2.4.2	Slot 4 . . . . .	10
2.4.3	Slot 5 . . . . .	11
2.4.4	Slot 6 . . . . .	12
2.4.5	Slot 7 . . . . .	13
2.5	FID Slots . . . . .	14
2.5.1	Slot 0 . . . . .	14
2.5.2	Slot 1 . . . . .	15
2.5.3	Slot 2 . . . . .	16
<b>A</b>	<b>Summary</b>	<b>17</b>
A.1	Status . . . . .	17
A.2	Comments . . . . .	17

# 1 Front

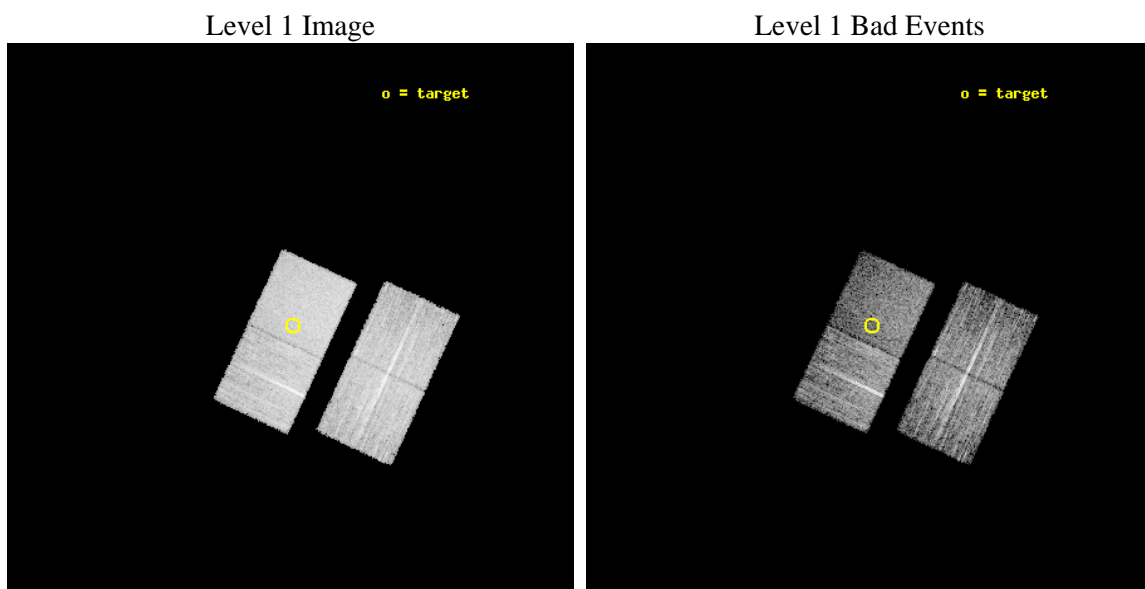
seq_num	702377	Sequence number
obs_id	12741	Observation id
title	Completing the Chandra 3C Snapshot Survey: Extragalactic Radio Sources with $z < 0.3$	Proposal title
observer	Dr. Daniel Harris	Principal investigator
object	3C 403.1	Source name
dtcycle	0	&#160
cycle	P	events from which exps? Prim/Second/Both
ra_targ	298.127083	Observer's specified target RA [deg]
dec_targ	-1.288333	Observer's specified target Dec [deg]
ra_nom	298.13113441811	Nominal RA [deg]
dec_nom	-1.2909812600214	Nominal Dec [deg]
roll_nom	294.90498322381	Nominal Roll [deg]
revision	2	Processing version of data
ontime	8053.8000619411	Sum of GTIs [s]
livetime	7948.5712350105	Livetime [s]
ontime2	8053.8000619411	Sum of GTIs [s]
ontime3	8053.8000619411	Sum of GTIs [s]
ontime6	8053.8000619411	Sum of GTIs [s]
ontime7	8053.8000619411	Sum of GTIs [s]
l2events	46129	Number of level 2 events



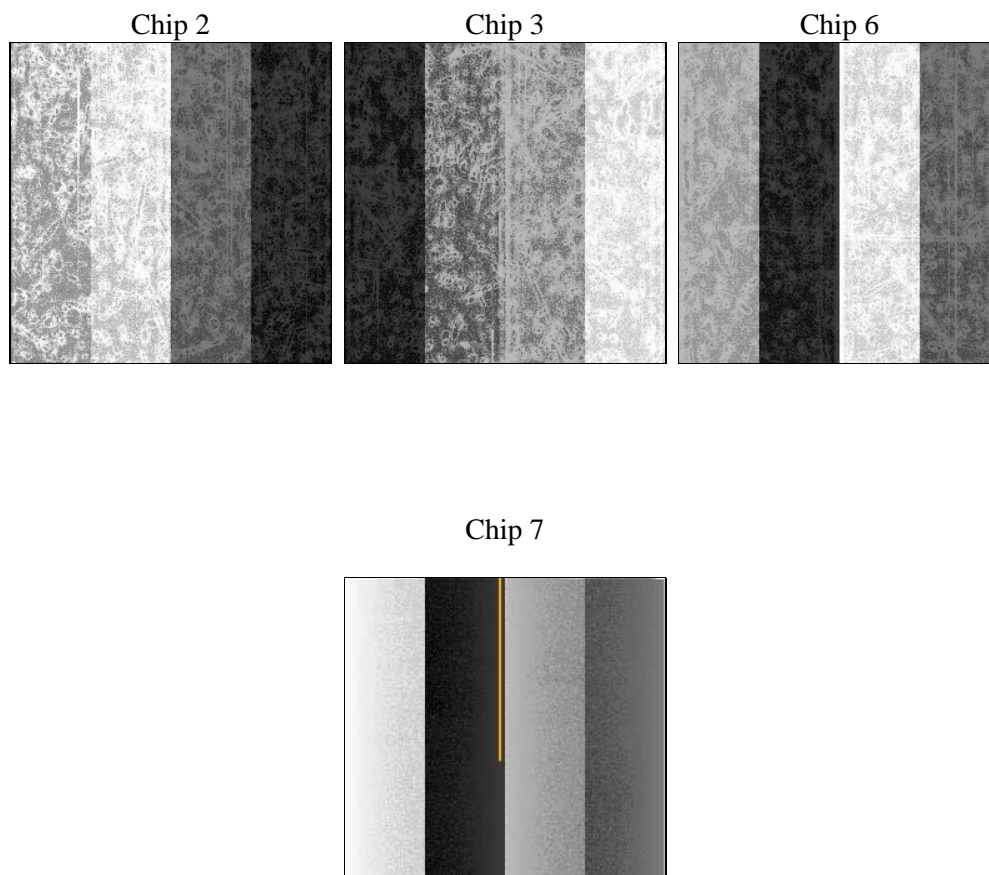
## 2 OBI

### 2.1 OBI

#### 2.1.1 Images



#### 2.1.2 Bias



### 2.1.3 Parameters

obi_num	0	Obi number	sched_exp_time	8000.000000	[s] Scheduled observation exposure time
ascdsver	8.4.5	Processing system revision	ontime	8053.8000619411	Sum of GTIs [s]
caldsver	4.5.0	&#160	ontime2	8053.8000619411	Sum of GTIs [s]
date	2012-07-07T16:35:49	Date and time of file creation	ontime3	8053.8000619411	Sum of GTIs [s]
revision	2	Processing version of data	ontime6	8053.8000619411	Sum of GTIs [s]
			ontime7	8053.8000619411	Sum of GTIs [s]
			l1events	234438	Number of level 1 events

### 2.1.4 Events

	ccd 2	ccd 3	ccd 6	ccd 7
level 1 events	55554	52366	58248	68270
rejected events	49203	46599	51782	37221
rejected %	88%	88%	88%	54%

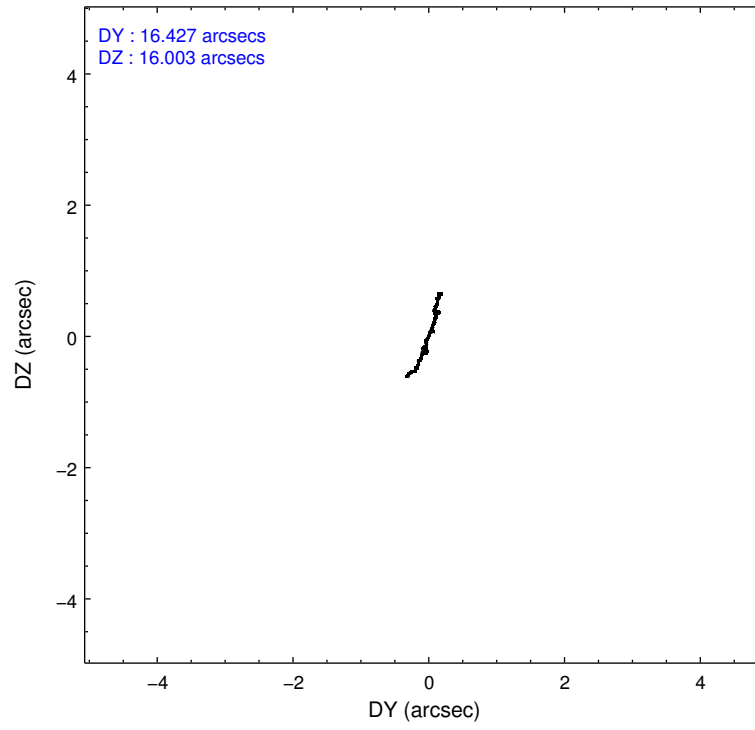
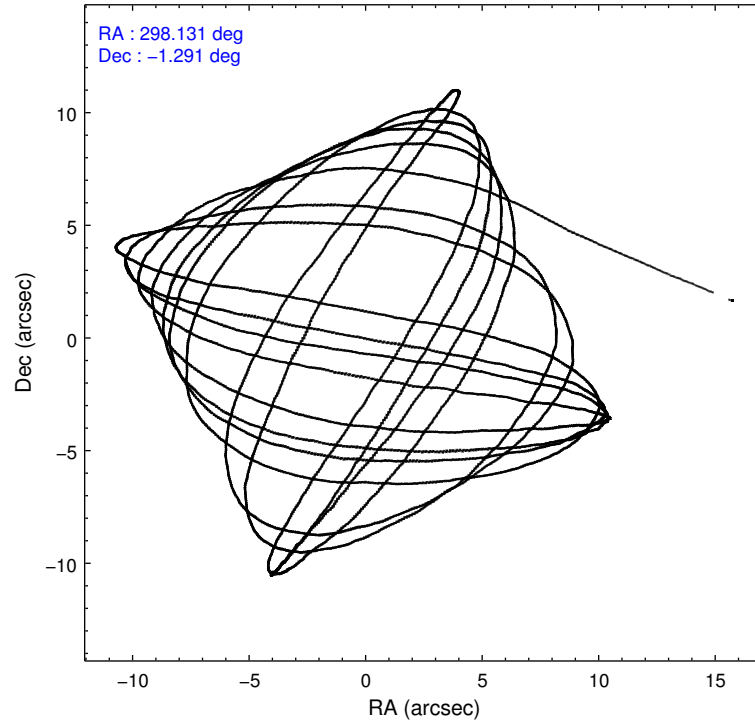
	ccd 2	ccd 3	ccd 6	ccd 7
grade 0 events	2332	2001	2277	2849
	4%	3%	3%	4%
grade 1 events	29	34	26	95
	0%	0%	0%	0%
grade 2 events	1557	1308	1445	6279
	2%	2%	2%	9%
grade 3 events	625	660	679	2789
	1%	1%	1%	4%
grade 4 events	669	638	664	2793
	1%	1%	1%	4%
grade 5 events	2153	2469	2566	6996
	3%	4%	4%	10%
grade 6 events	1173	1165	1408	16359
	2%	2%	2%	23%
grade 7 events	47016	44091	49183	30110
	84%	84%	84%	44%

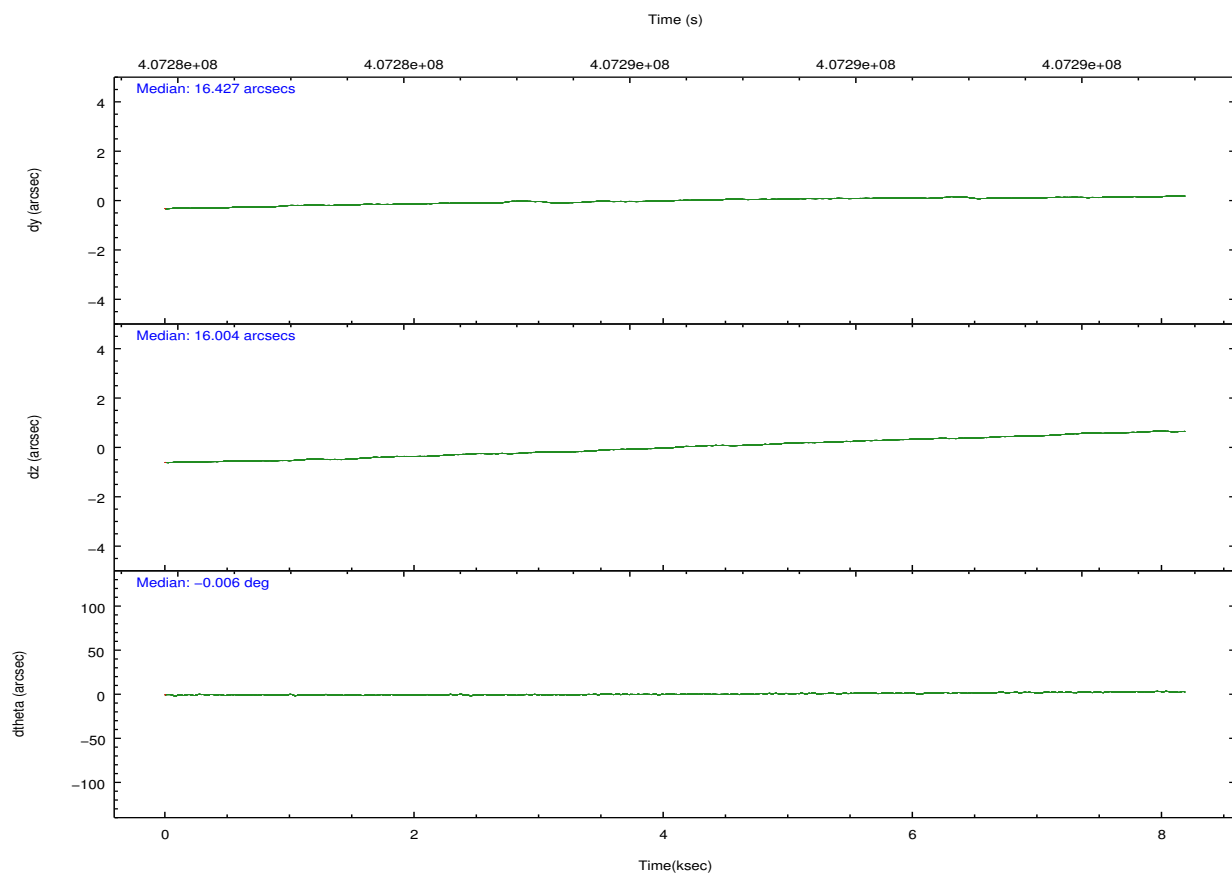
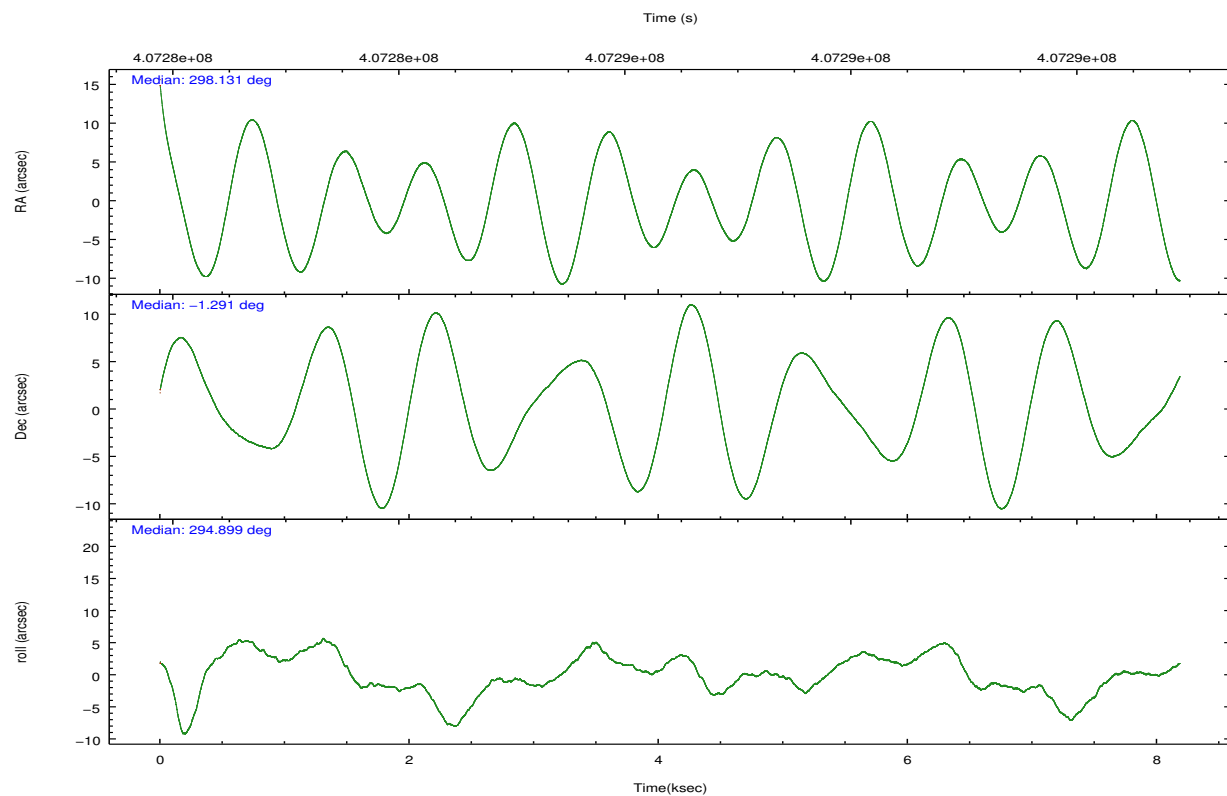


## 2.2 Compared Parameters

Parameter	Planned	Actual	Parameter	Planned	Actual
Instrument	ACIS	ACIS	Obspar format version number	7	7
Detector	ACIS-2367	ACIS-2367	Obspar file type	PREDICTED	ACTUAL
Grating	NONE	NONE	Obspar update status	NONE	UPDATED
Data mode	VFAINT	VFAINT	CCD I0 on	N	N
Observation mode	POINTING	POINTING	CCD I1 on	N	N
[deg] Pointing RA	298.108542	298.131134418114	CCD I2 on	O1	Y
[deg] Pointing Dec	-1.275590	-1.290981260021387	CCD I3 on	O2	Y
[deg] Pointing Roll	294.747857	294.9049832238103	CCD S0 on	N	N
[mm] SIM focus pos	-0.684267	-0.6828225247311905	CCD S1 on	N	N
[mm] SIM defocus	0	0.001444936568705701	CCD S2 on	Y	Y
[mm] SIM translation stage pos	-190.132523	-190.1425803651734	CCD S3 on	Y	Y
[mm] SIM translation stage offset	0	0.01005778216563158	CCD S4 on	N	N
[s] Observation start time (MET)	407282493.184000	407281622.52061	CCD S5 on	N	N
Observation start date	2010-11-27T22:00:27	2010-11-27T21:47:02	Number of optional ACIS chips dropped	0	0
[s] Observation end time (MET)	407290493.184000	407291441.50862	On-chip summing requested	N	N
Observation end date	2010-11-28T00:13:47	2010-11-28T00:30:41	Subarray requested	NONE	NONE
Read mode	TIMED	TIMED	Alternating exposures requested	N	N
			[s] Primary exposure time	0.000000	3.1

## 2.3 Aspect



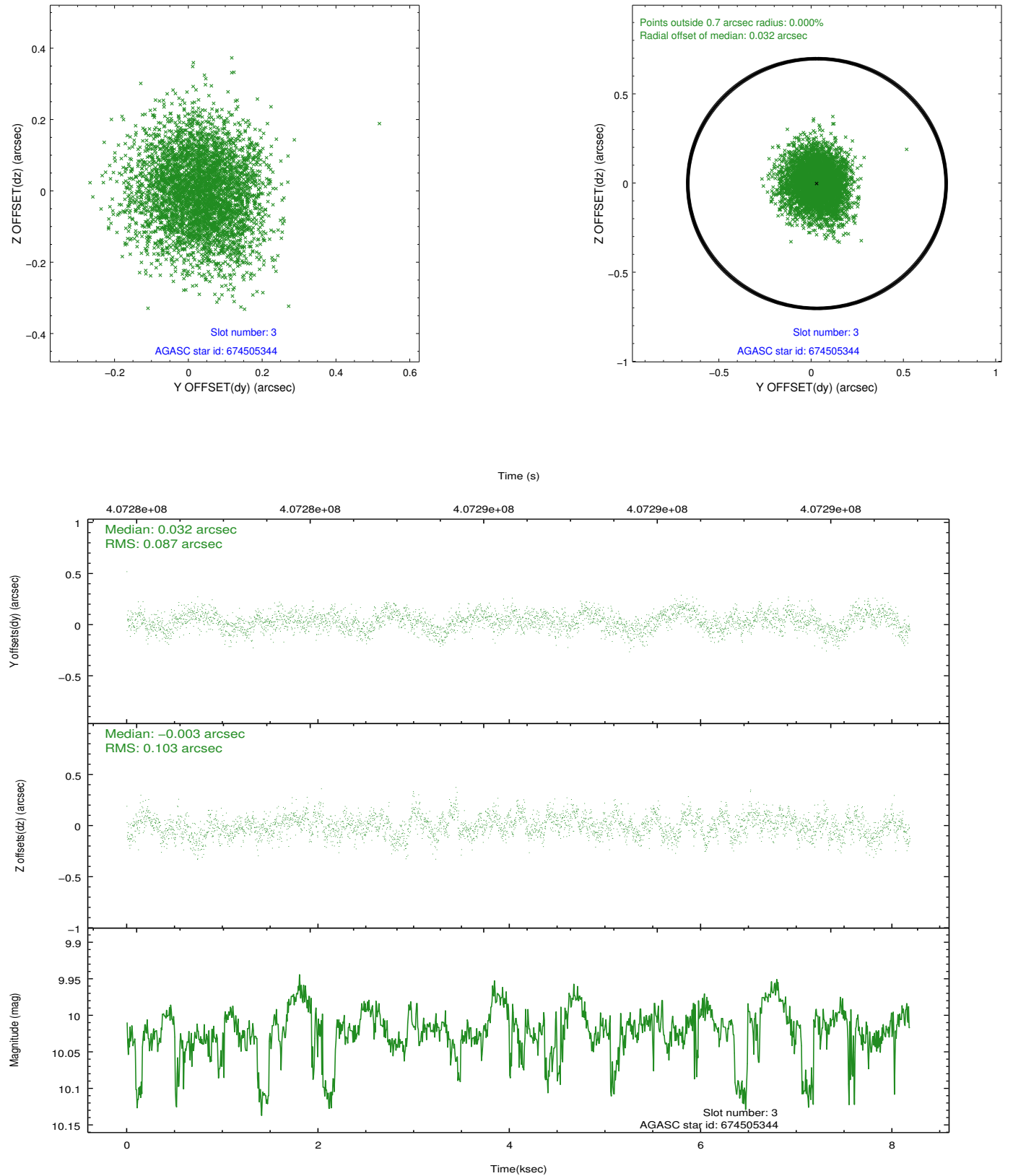


### Slot Statistics

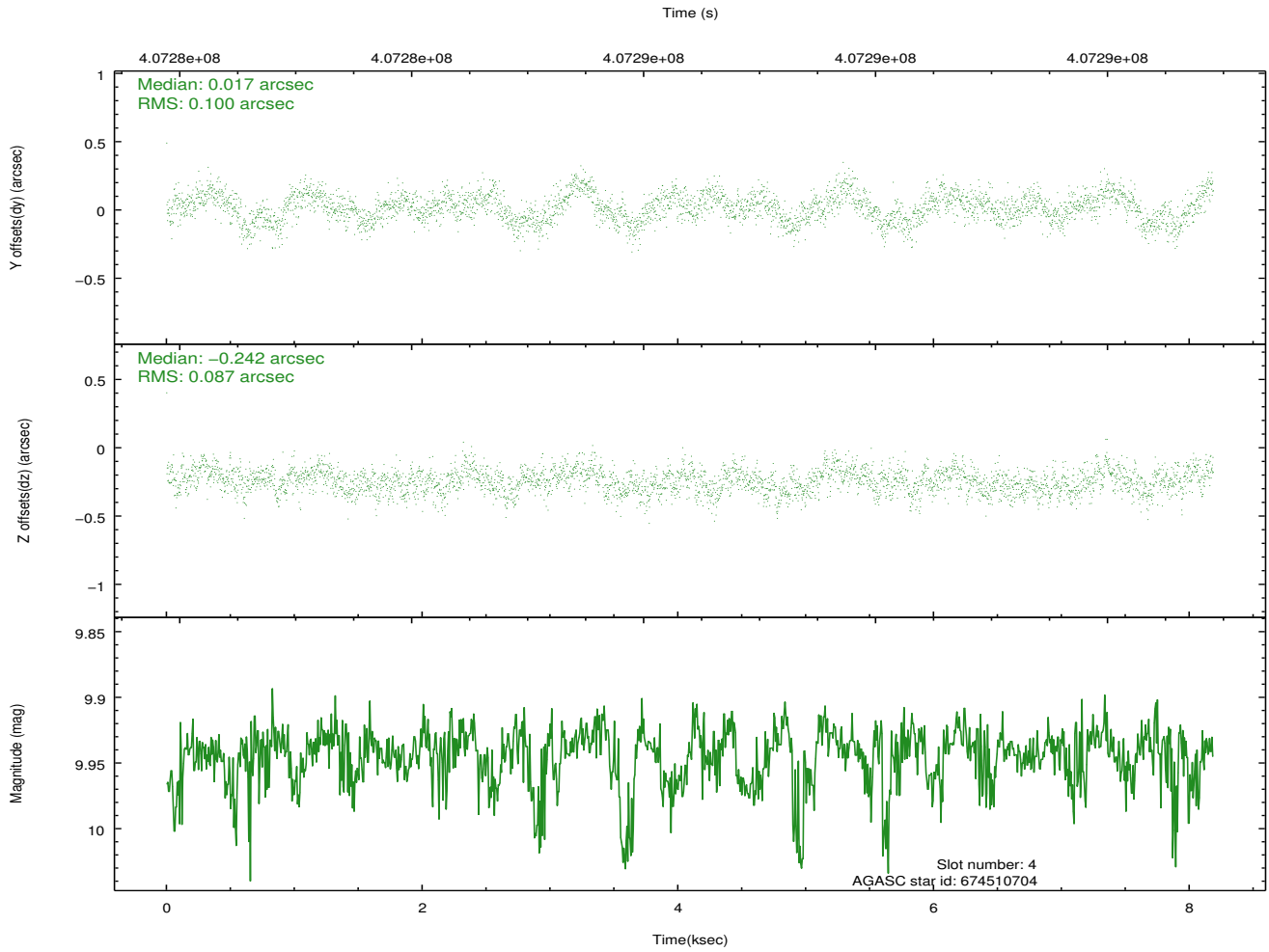
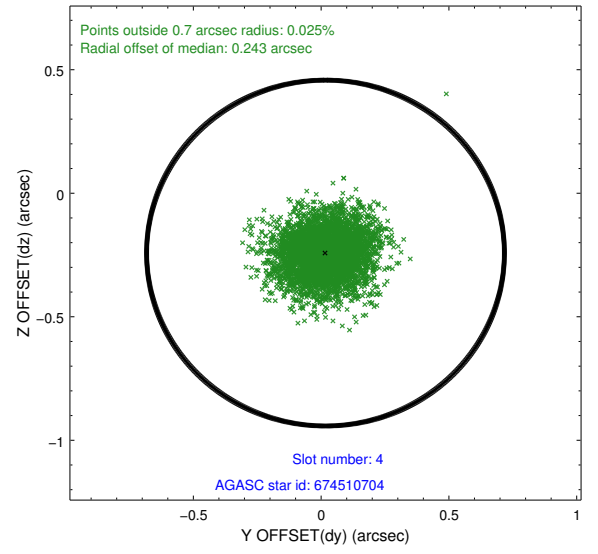
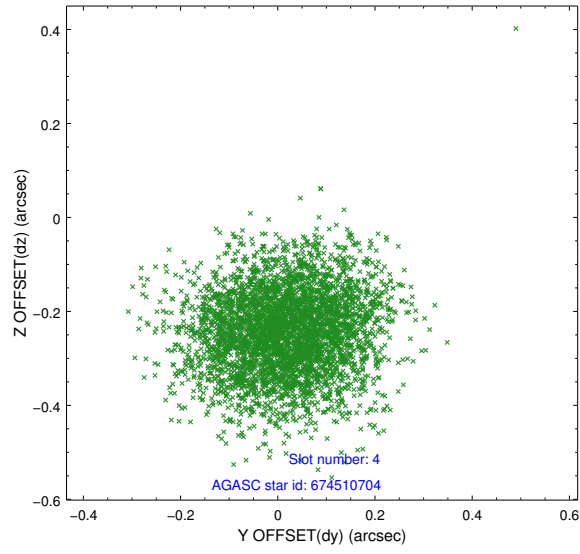
slot	status	id	mag	n_pts	med_dy	med_dz	dr1	dr2	ra	dec	mean_y	mean_z
0	FID	ACIS-S-1	7.00	1997	0.037	-0.059	0.023	0.033	0.000000	0.000000	926.67	-1733.04
1	FID	ACIS-S-4	7.01	1996	0.105	0.025	0.011	0.017	0.000000	0.000000	2144.50	170.50
2	FID	ACIS-S-5	7.05	1997	-0.171	0.043	0.014	0.021	0.000000	0.000000	-1821.55	164.85
3	GUIDE	674505344	10.02	3987	0.032	-0.003	0.144	0.232	297.656545	-1.344847	-453.86	-1581.65
4	GUIDE	674510704	9.94	3988	0.017	-0.242	0.141	0.227	297.891750	-1.689820	1028.16	-1333.11
5	GUIDE	674514232	8.30	3992	-0.034	0.046	0.075	0.124	298.102918	-0.687355	-1931.15	867.82
6	GUIDE	674628544	9.15	3992	-0.239	0.160	0.110	0.188	298.348996	-0.471013	-2268.28	1999.01
7	GUIDE	675151880	9.26	3992	0.224	0.045	0.102	0.164	298.367939	-1.884605	2381.92	-69.51

## 2.4 Star Slots

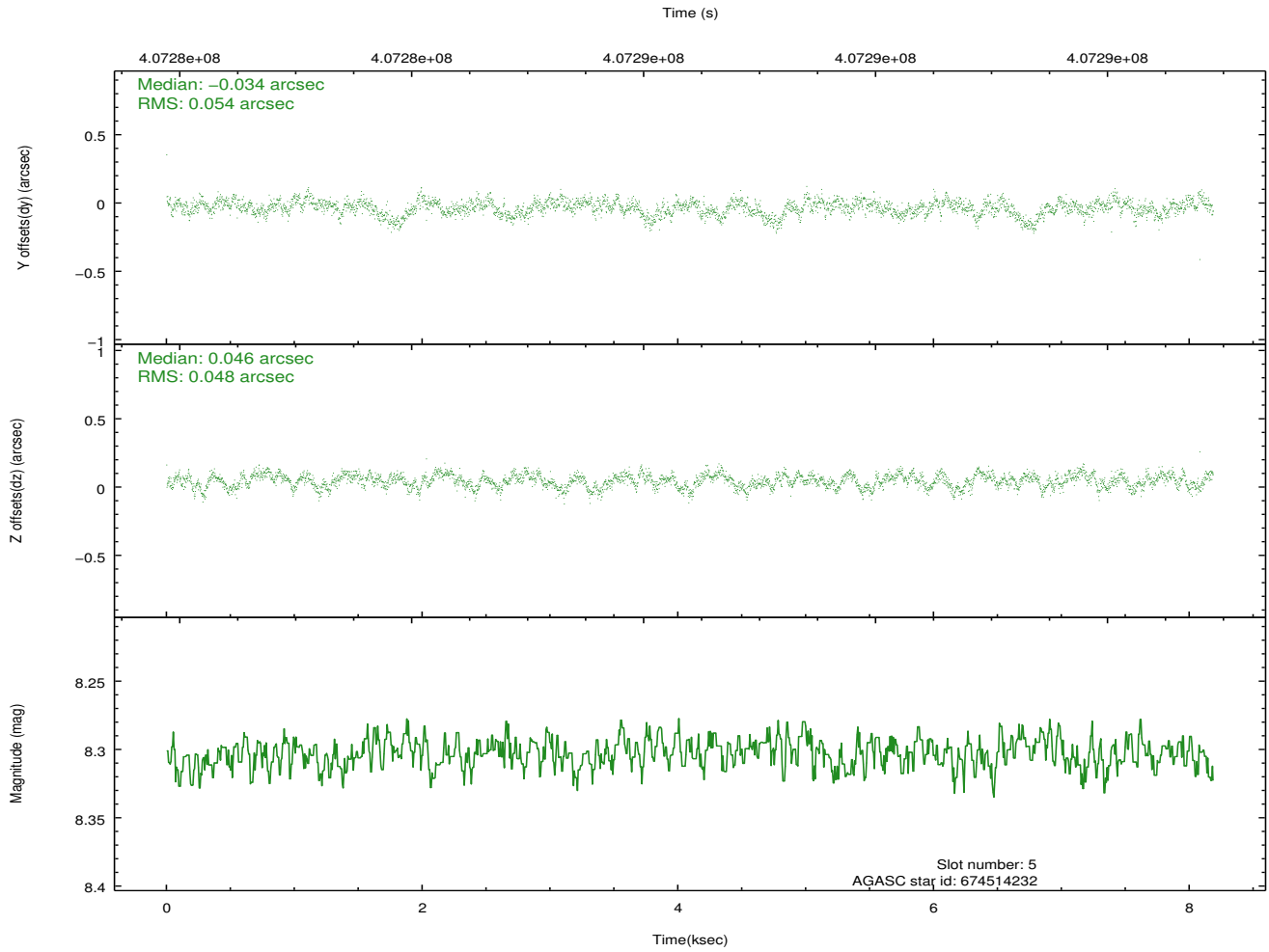
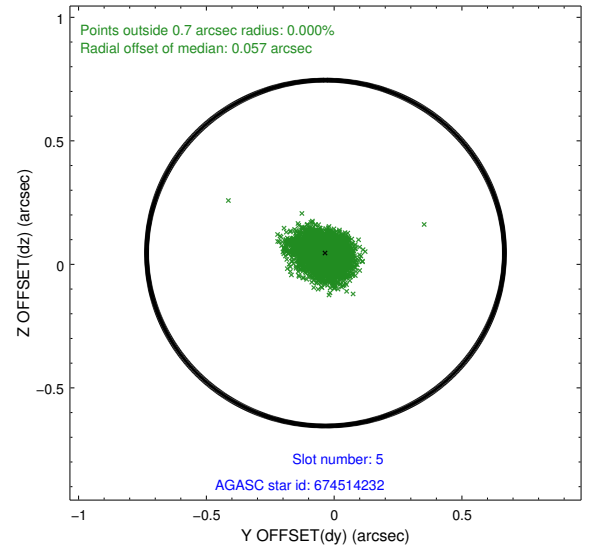
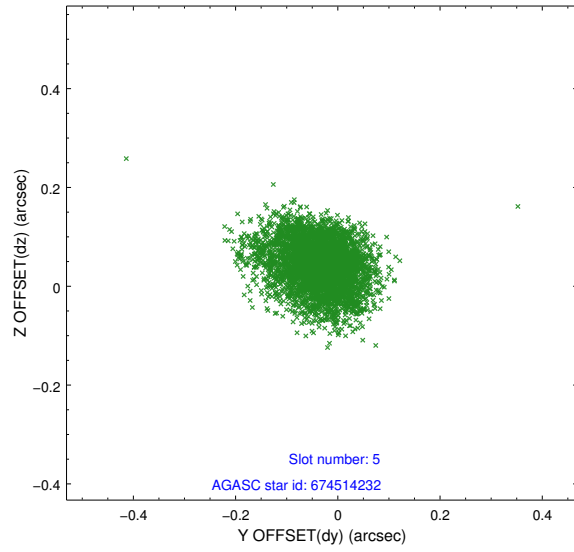
### 2.4.1 Slot 3



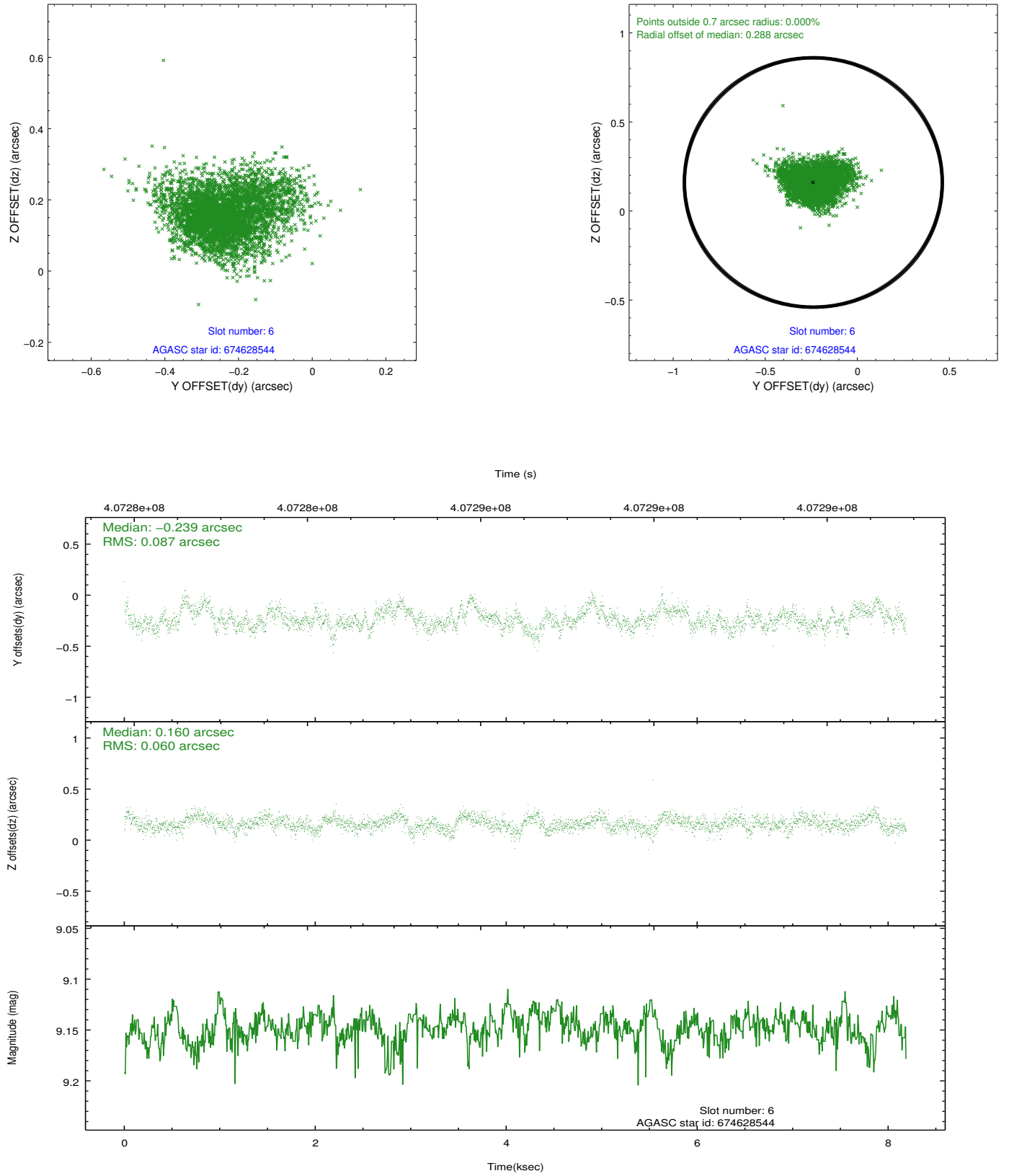
## 2.4.2 Slot 4



### 2.4.3 Slot 5

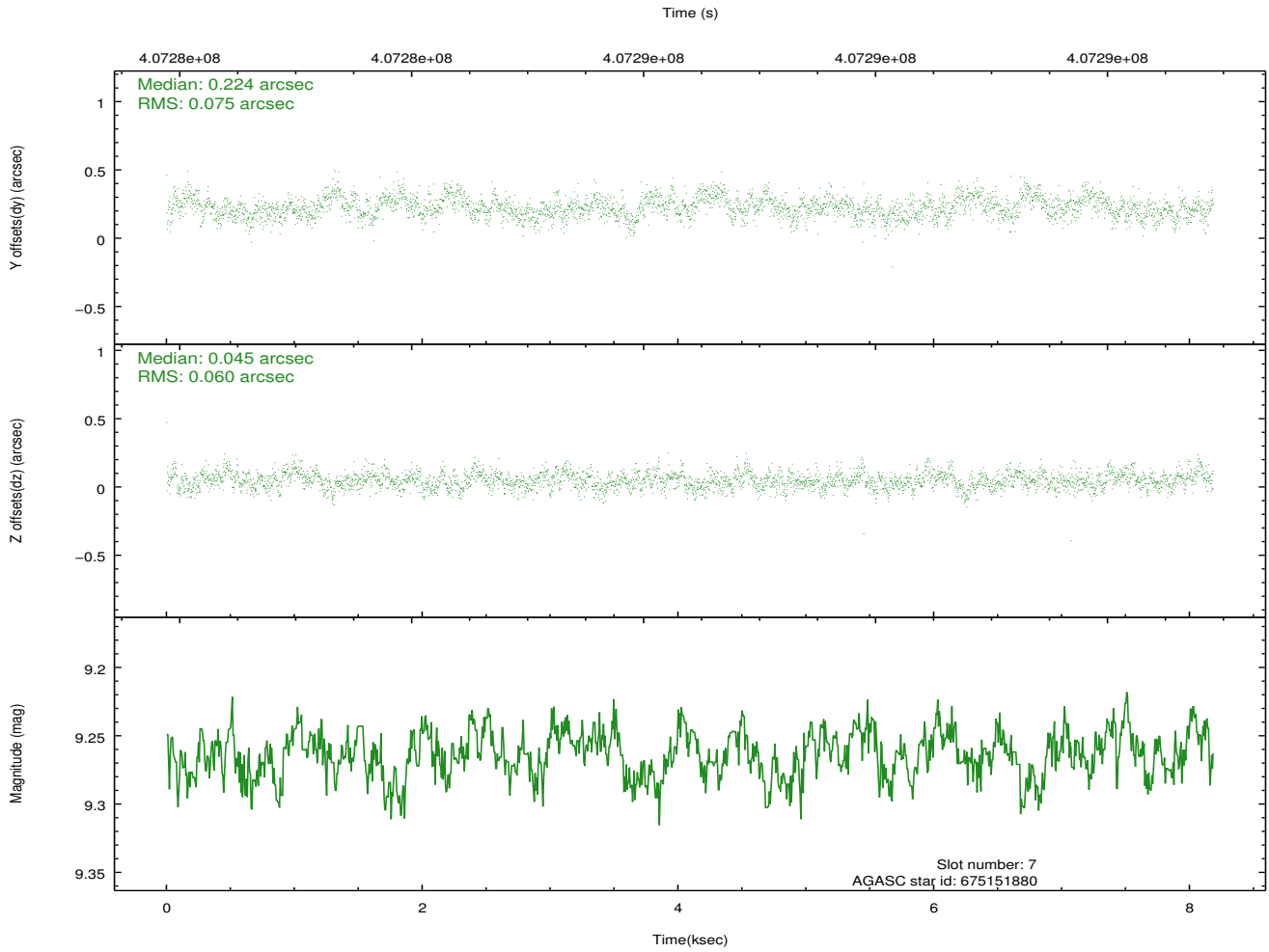
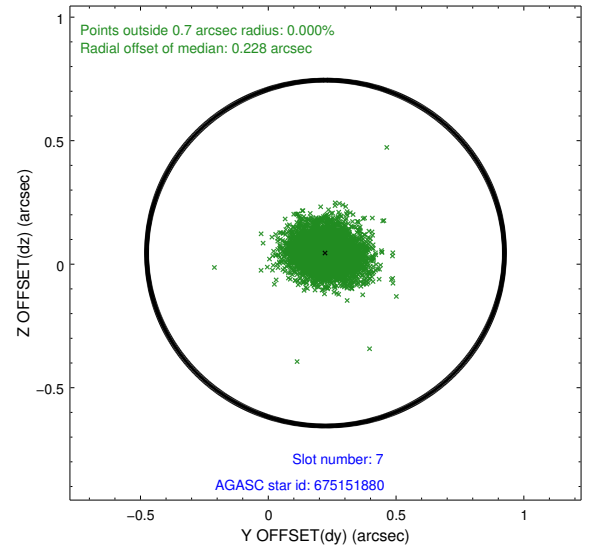
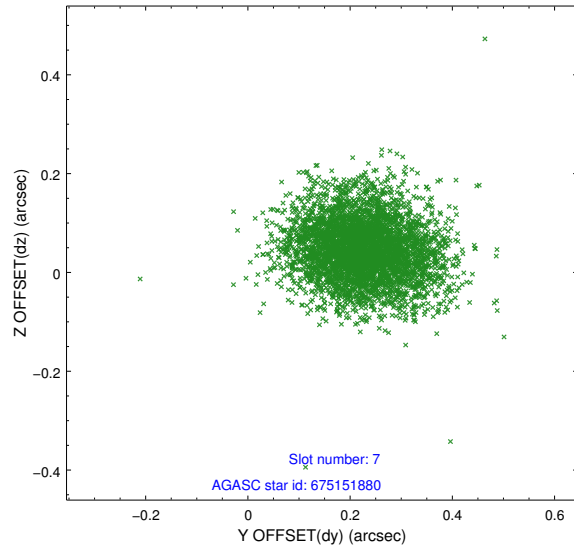


## 2.4.4 Slot 6



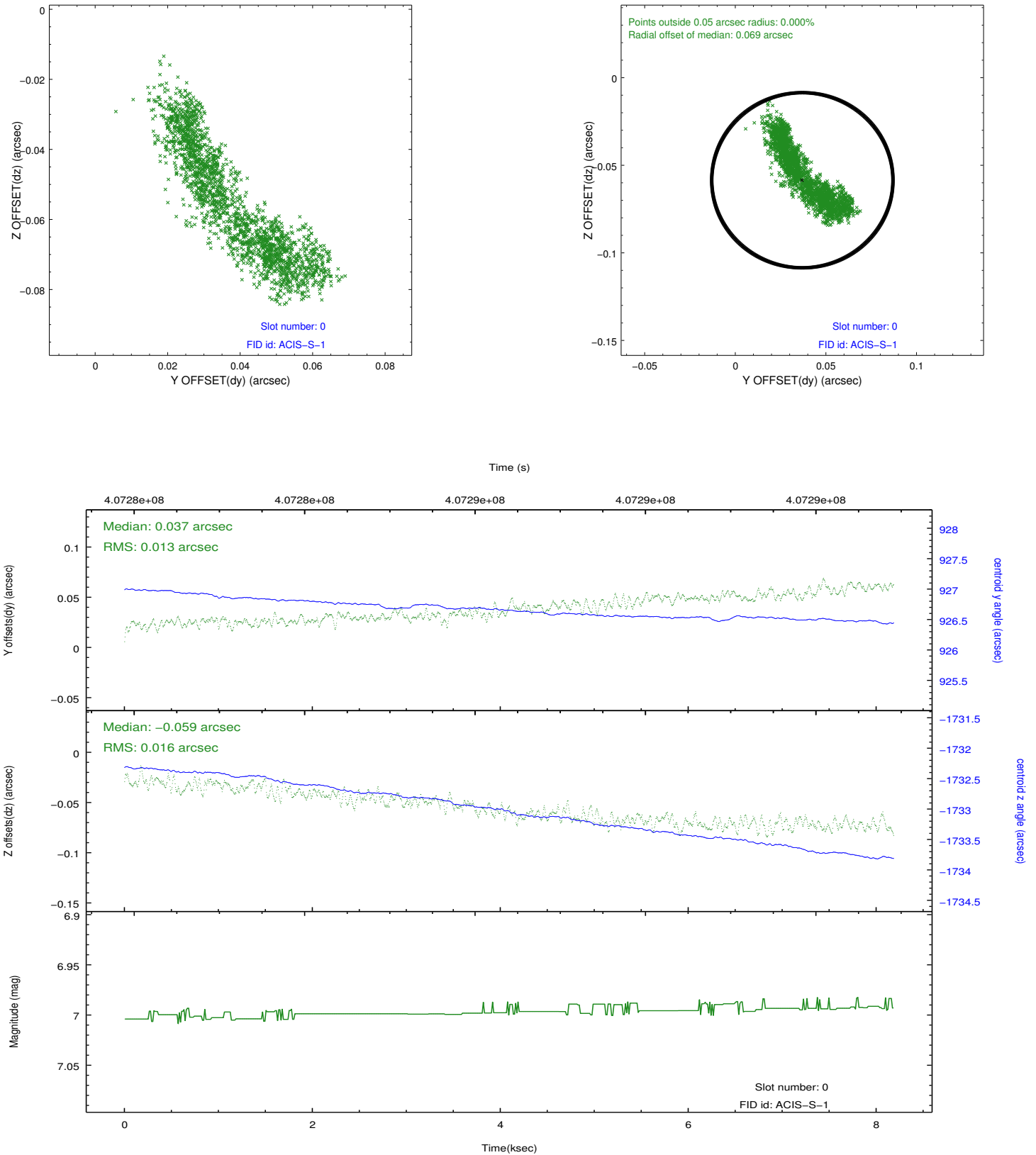


## 2.4.5 Slot 7

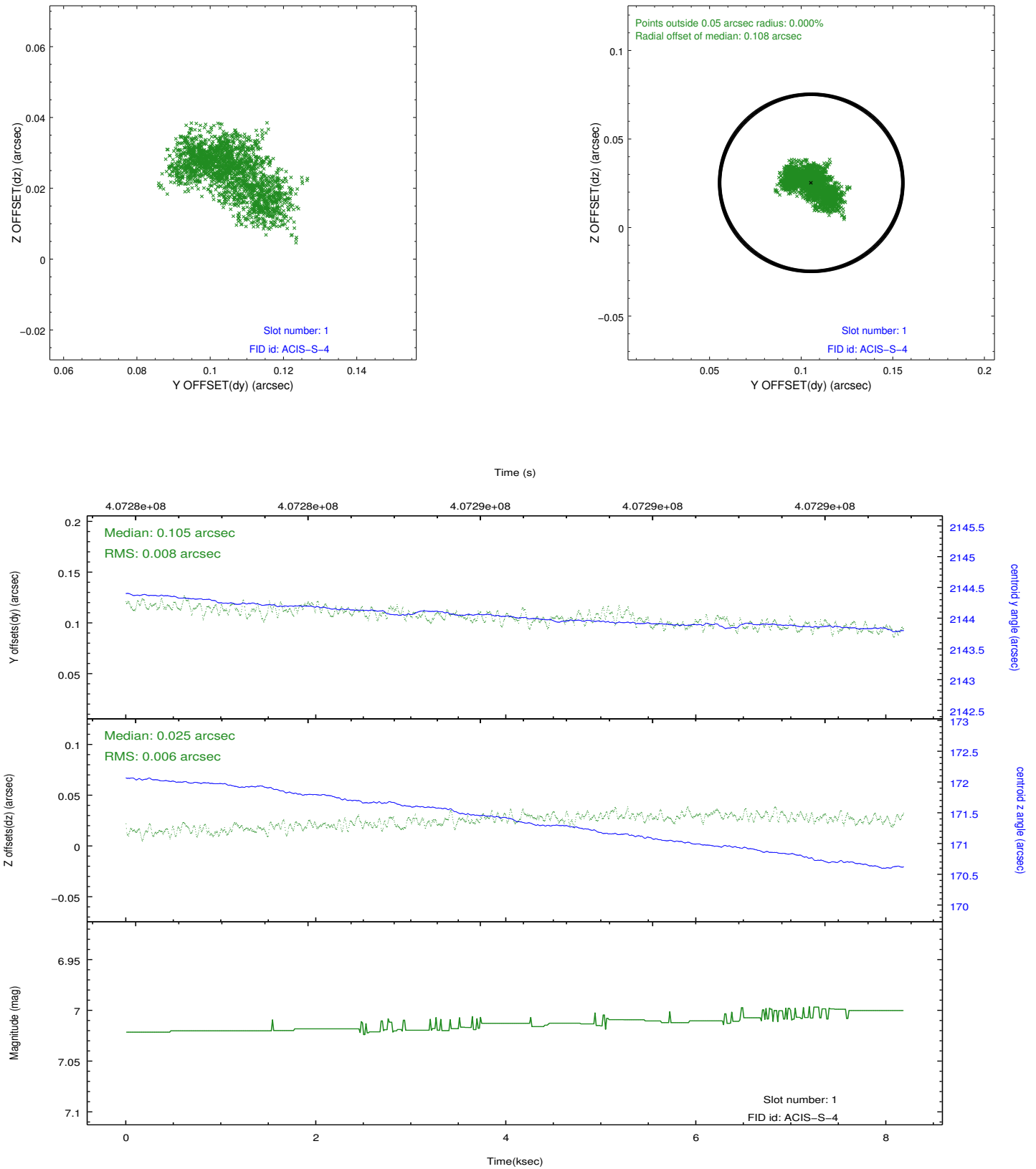


## 2.5 FID Slots

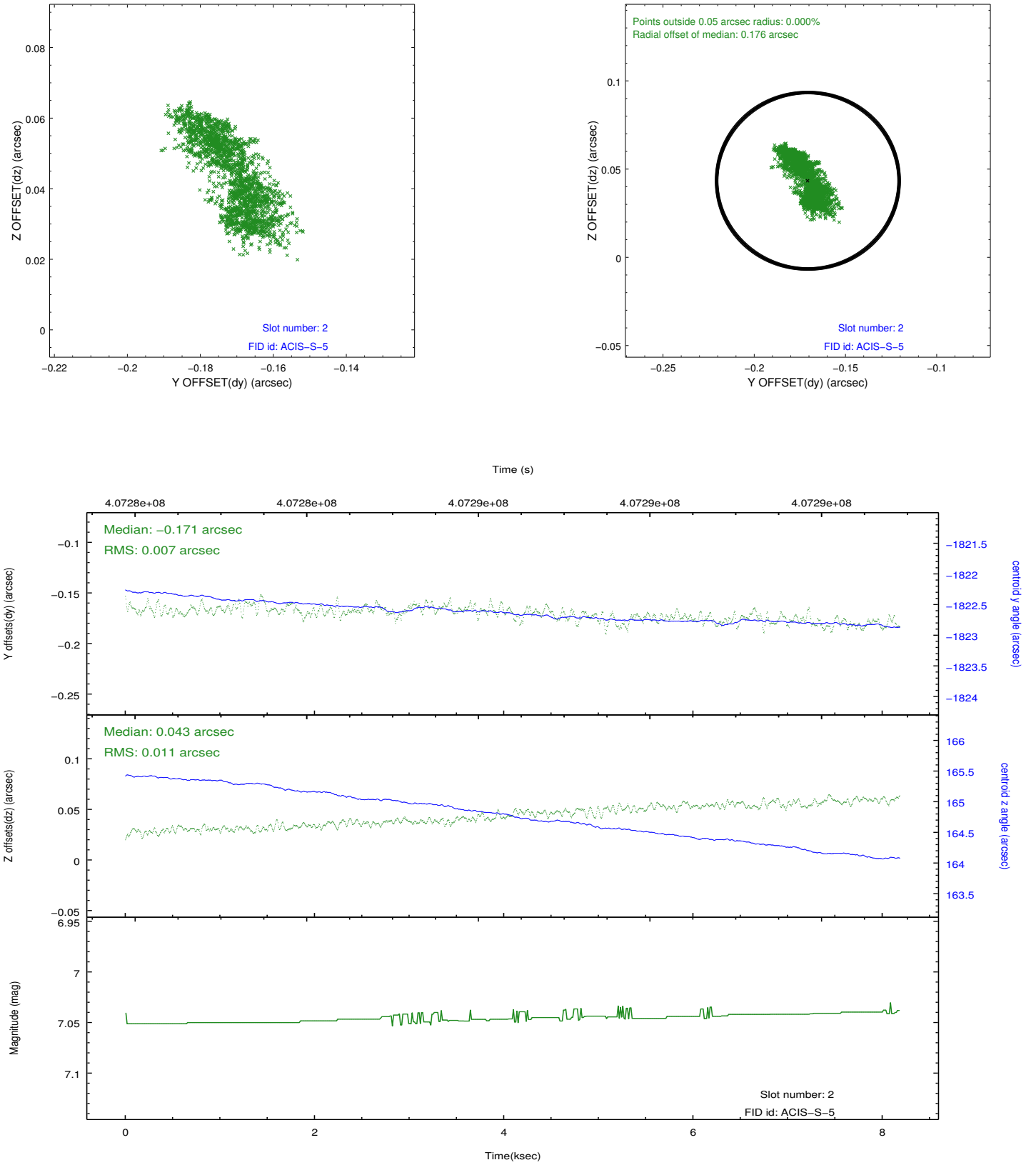
### 2.5.1 Slot 0



## 2.5.2 Slot 1



### 2.5.3 Slot 2



## **A Summary**

### **A.1 Status**

V&V Scientist	Jen Lauer
V&V Date (YYYY-MM-DD)	2012.07.17
V&V Edition	1
V&V Disposition and Status	OK
V&V Charge Time	8.0538000619411

### **A.2 Comments**