

# V&V Reference Report

## L2 ASCDS Version : 8.4.5

Observation 12722 - L2 Version 3  
Chandra X-Ray Center

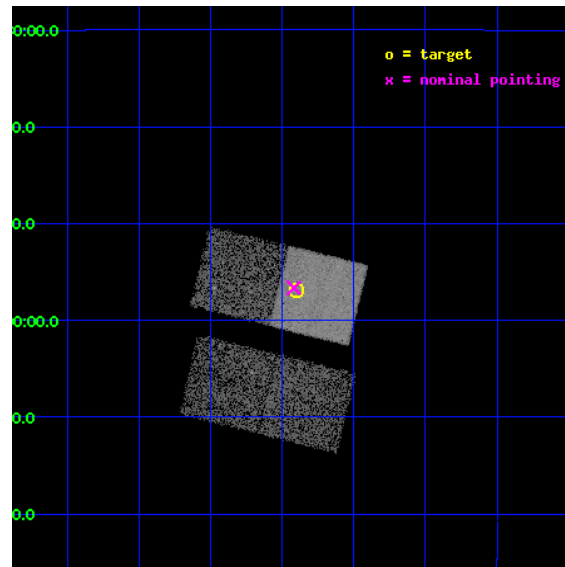
L2 Processing Date : Jul 6 2012

## Contents

<b>1</b>	<b>Front</b>	<b>2</b>
<b>2</b>	<b>OBI</b>	<b>3</b>
2.1	OBI . . . . .	3
2.1.1	Images . . . . .	3
2.1.2	Bias . . . . .	3
2.1.3	Parameters . . . . .	4
2.1.4	Events . . . . .	4
2.2	Compared Parameters . . . . .	5
2.3	Aspect . . . . .	6
2.4	Star Slots . . . . .	9
2.4.1	Slot 3 . . . . .	9
2.4.2	Slot 4 . . . . .	10
2.4.3	Slot 5 . . . . .	11
2.4.4	Slot 6 . . . . .	12
2.5	FID Slots . . . . .	13
2.5.1	Slot 0 . . . . .	13
2.5.2	Slot 1 . . . . .	14
2.5.3	Slot 2 . . . . .	15
<b>A</b>	<b>Summary</b>	<b>16</b>
A.1	Status . . . . .	16
A.2	Comments . . . . .	16

# 1 Front

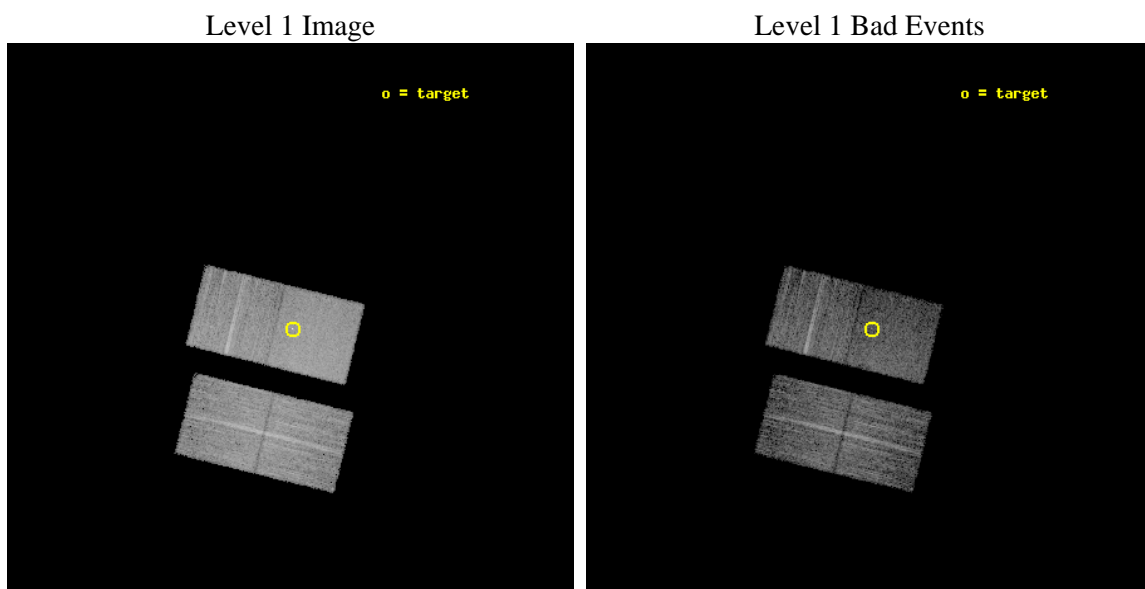
seq_num	702358	Sequence number
obs_id	12722	Observation id
title	Completing the Chandra 3C Snapshot Survey: Extragalactic Radio Sources with $z < 0.3$	Proposal title
observer	Dr. Daniel Harris	Principal investigator
object	3C 63	Source name
dtcycle	0	&#160
cycle	P	events from which exps? Prim/Second/Both
ra_targ	35.22625	Observer's specified target RA [deg]
dec_targ	-1.9475	Observer's specified target Dec [deg]
ra_nom	35.229601334997	Nominal RA [deg]
dec_nom	-1.9439854049775	Nominal Dec [deg]
roll_nom	13.842540295221	Nominal Roll [deg]
revision	3	Processing version of data
ontime	8053.8000619411	Sum of GTIs [s]
livetime	7948.5712350105	Livetime [s]
ontime2	8053.8000619411	Sum of GTIs [s]
ontime3	8050.6590815783	Sum of GTIs [s]
ontime6	8053.8000619411	Sum of GTIs [s]
ontime7	8053.8000619411	Sum of GTIs [s]
l2events	47858	Number of level 2 events



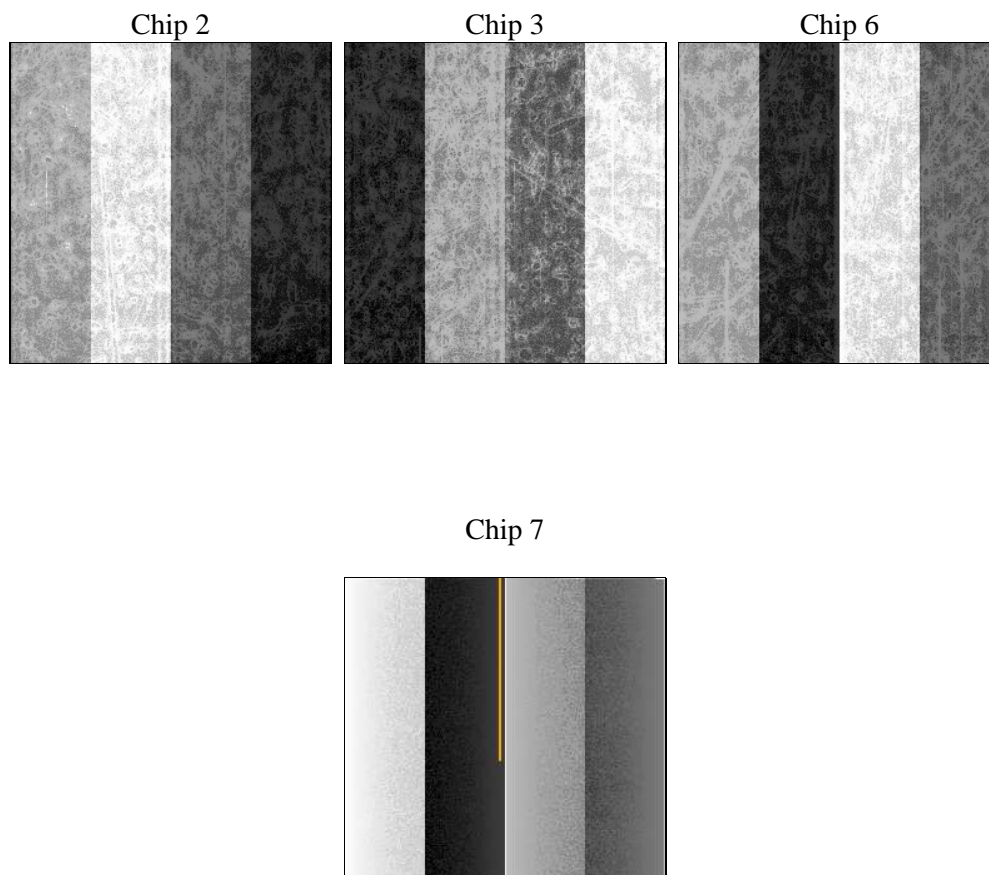
## 2 OBI

### 2.1 OBI

#### 2.1.1 Images



#### 2.1.2 Bias



### 2.1.3 Parameters

obi_num	0	Obi number	sched_exp_time	8000.000000	[s] Scheduled observation exposure time
ascdsver	8.4.5	Processing system revision	ontime	8053.8000619411	Sum of GTIs [s]
caldsver	4.5.0	&#160	ontime2	8053.8000619411	Sum of GTIs [s]
date	2012-07-06T12:21:43	Date and time of file creation	ontime3	8050.6590815783	Sum of GTIs [s]
revision	3	Processing version of data	ontime6	8053.8000619411	Sum of GTIs [s]
			ontime7	8053.8000619411	Sum of GTIs [s]
			l1events	246196	Number of level 1 events

### 2.1.4 Events

	ccd 2	ccd 3	ccd 6	ccd 7
level 1 events	57272	58267	58585	72072
rejected events	51151	52252	52064	39367
rejected %	89%	89%	88%	54%

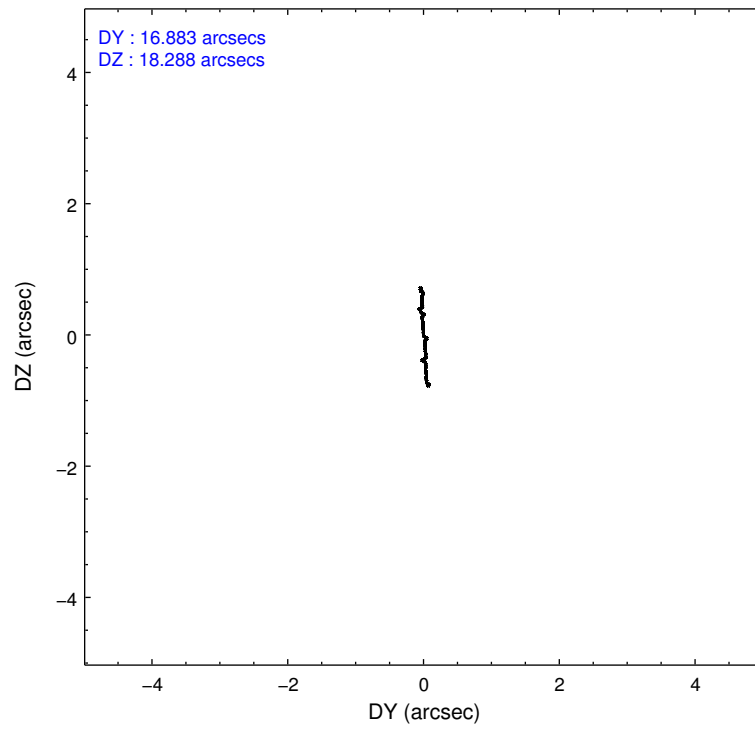
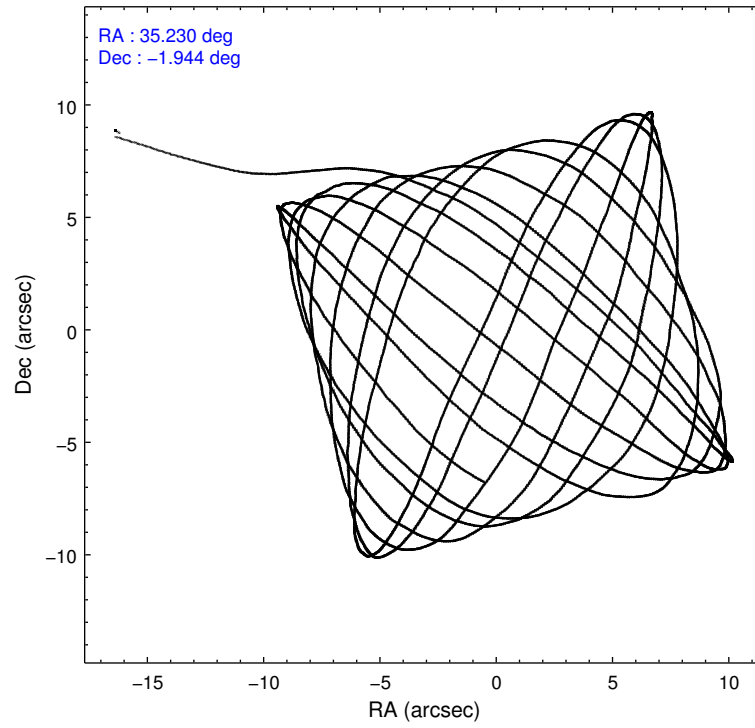
	ccd 2	ccd 3	ccd 6	ccd 7
grade 0 events	2229	2076	2300	3013
	3%	3%	3%	4%
grade 1 events	27	34	32	93
	0%	0%	0%	0%
grade 2 events	1470	1396	1447	6816
	2%	2%	2%	9%
grade 3 events	647	672	702	2918
	1%	1%	1%	4%
grade 4 events	655	638	653	2820
	1%	1%	1%	3%
grade 5 events	2127	2530	2669	7332
	3%	4%	4%	10%
grade 6 events	1126	1242	1423	17155
	1%	2%	2%	23%
grade 7 events	48991	49679	49359	31925
	85%	85%	84%	44%

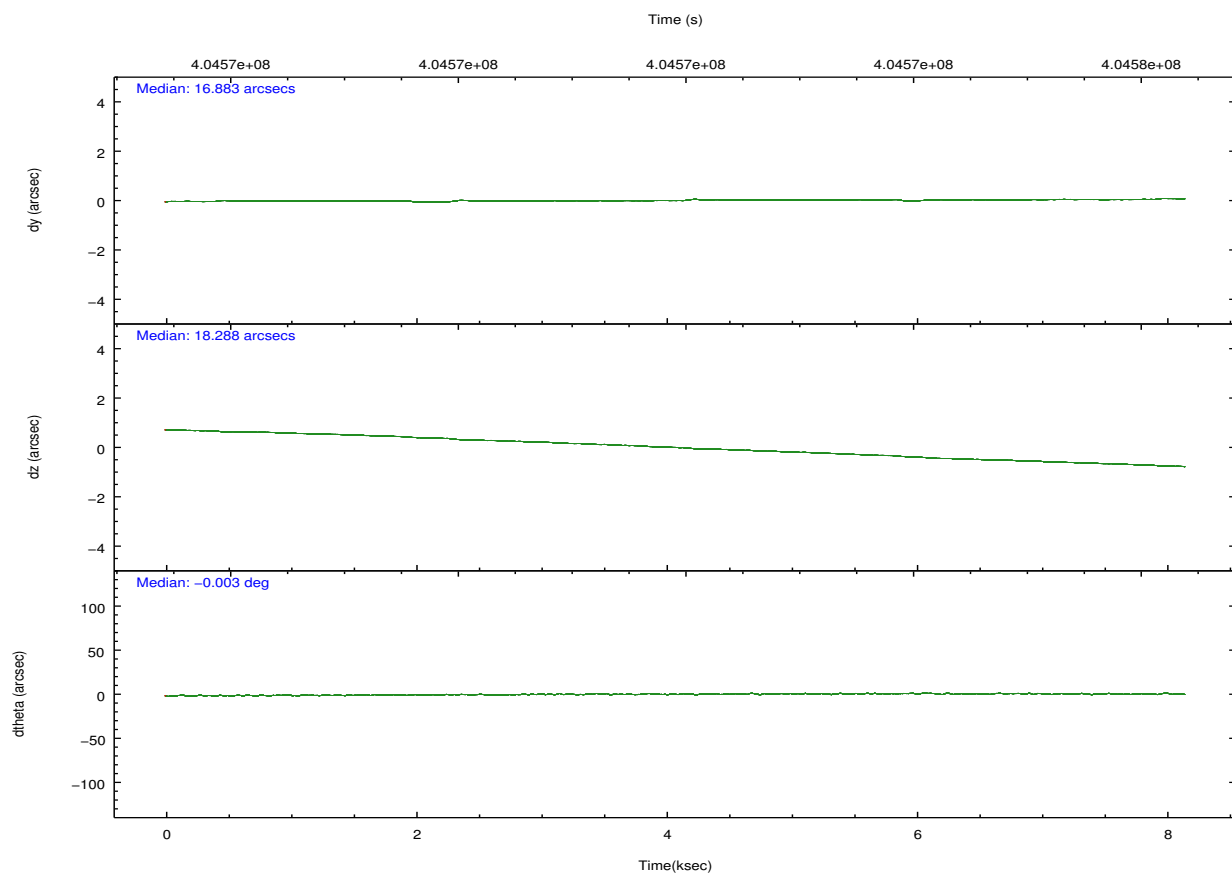
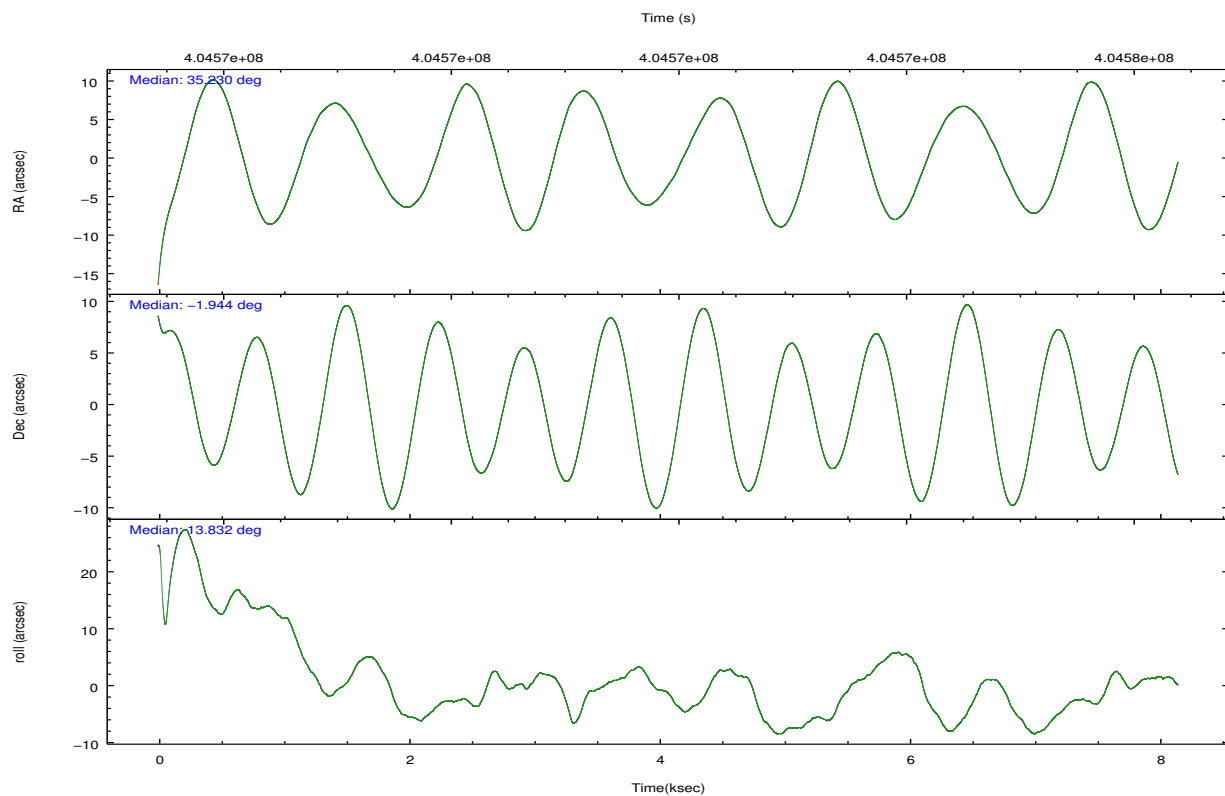


## 2.2 Compared Parameters

Parameter	Planned	Actual	Parameter	Planned	Actual
Instrument	ACIS	ACIS	Obspar format version number	7	7
Detector	ACIS-2367	ACIS-2367	Obspar file type	PREDICTED	ACTUAL
Grating	NONE	NONE	Obspar update status	NONE	UPDATED
Data mode	VFAINT	VFAINT	CCD I0 on	N	N
Observation mode	POINTING	POINTING	CCD I1 on	N	N
[deg] Pointing RA	35.210176	35.22960133499674	CCD I2 on	O1	Y
[deg] Pointing Dec	-1.963244	-1.943985404977488	CCD I3 on	O2	Y
[deg] Pointing Roll	13.685233	13.84254029522145	CCD S0 on	N	N
[mm] SIM focus pos	-0.684267	-0.6828225247311905	CCD S1 on	N	N
[mm] SIM defocus	0	0.001444936568705701	CCD S2 on	Y	Y
[mm] SIM translation stage pos	-190.132523	-190.1425803651734	CCD S3 on	Y	Y
[mm] SIM translation stage offset	0	0.01005778216563158	CCD S4 on	N	N
[s] Observation start time (MET)	404567976.184000	404566663.88076	CCD S5 on	N	N
Observation start date	2010-10-27T11:58:30	2010-10-27T11:37:43	Number of optional ACIS chips dropped	0	0
[s] Observation end time (MET)	404575976.184000	404577046.1063	On-chip summing requested	N	N
Observation end date	2010-10-27T14:11:50	2010-10-27T14:30:46	Subarray requested	NONE	NONE
Read mode	TIMED	TIMED	Alternating exposures requested	N	N
			[s] Primary exposure time	0.000000	3.1

## 2.3 Aspect



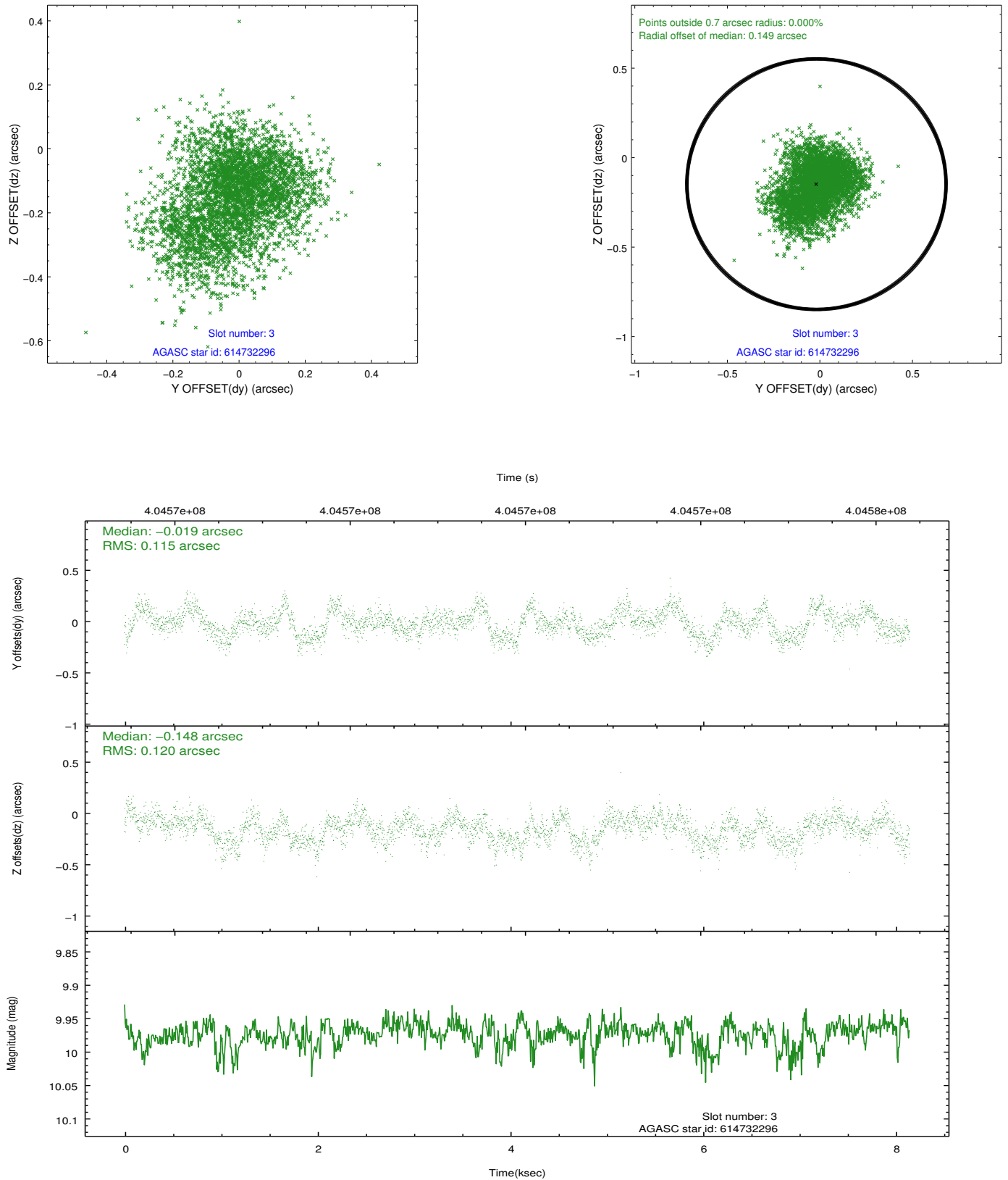


### Slot Statistics

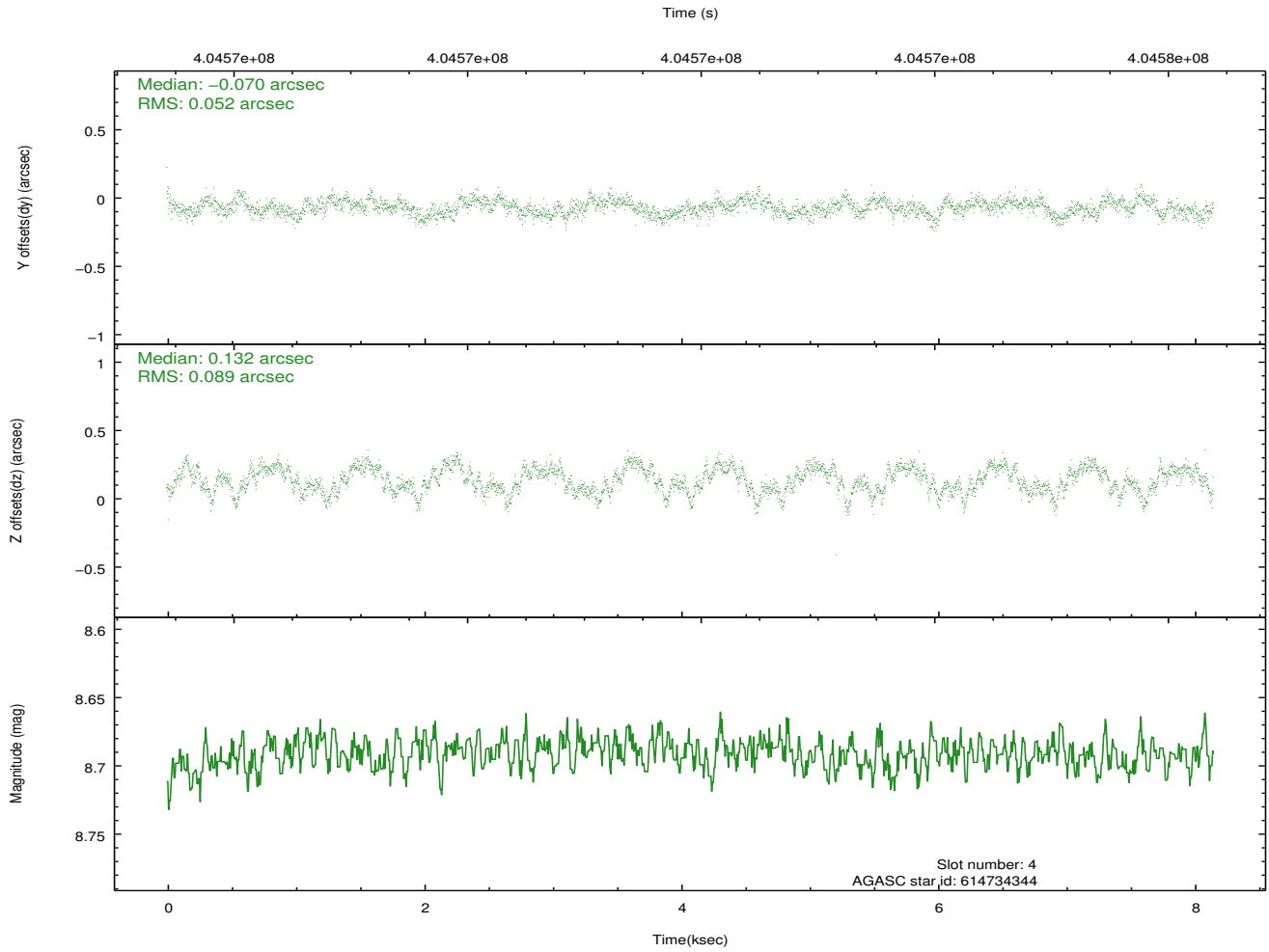
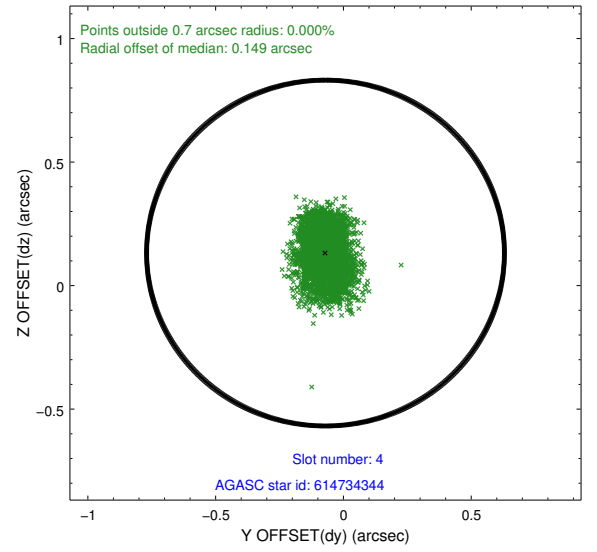
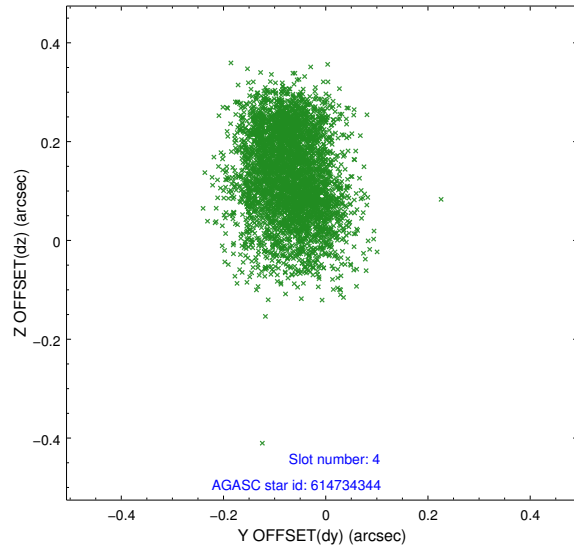
slot	status	id	mag	n_pts	med_dy	med_dz	dr1	dr2	ra	dec	mean_y	mean_z
0	FID	ACIS-S-2	6.89	1988	-0.062	-0.041	0.012	0.020	0.000000	0.000000	-770.01	-1739.72
1	FID	ACIS-S-4	6.98	1988	0.162	0.041	0.010	0.017	0.000000	0.000000	2143.22	168.08
2	FID	ACIS-S-5	7.01	1988	-0.130	0.008	0.008	0.013	0.000000	0.000000	-1822.00	162.57
3	GUIDE	614732296	9.97	3968	-0.019	-0.148	0.181	0.281	34.682704	-1.528416	-1474.30	1969.64
4	GUIDE	614734344	8.69	3973	-0.070	0.132	0.110	0.176	34.946145	-2.225313	-1146.19	-691.36
5	GUIDE	614735120	9.94	3970	0.068	0.121	0.173	0.276	34.748874	-2.202876	-1816.35	-446.73
6	GUIDE	614735928	8.69	3974	0.008	-0.108	0.087	0.136	34.738593	-1.740884	-1459.90	1178.80
7	OMITTED		0.00	0	0.000	0.000	0.000	0.000	0.000000	0.000000	0.00	0.00

## 2.4 Star Slots

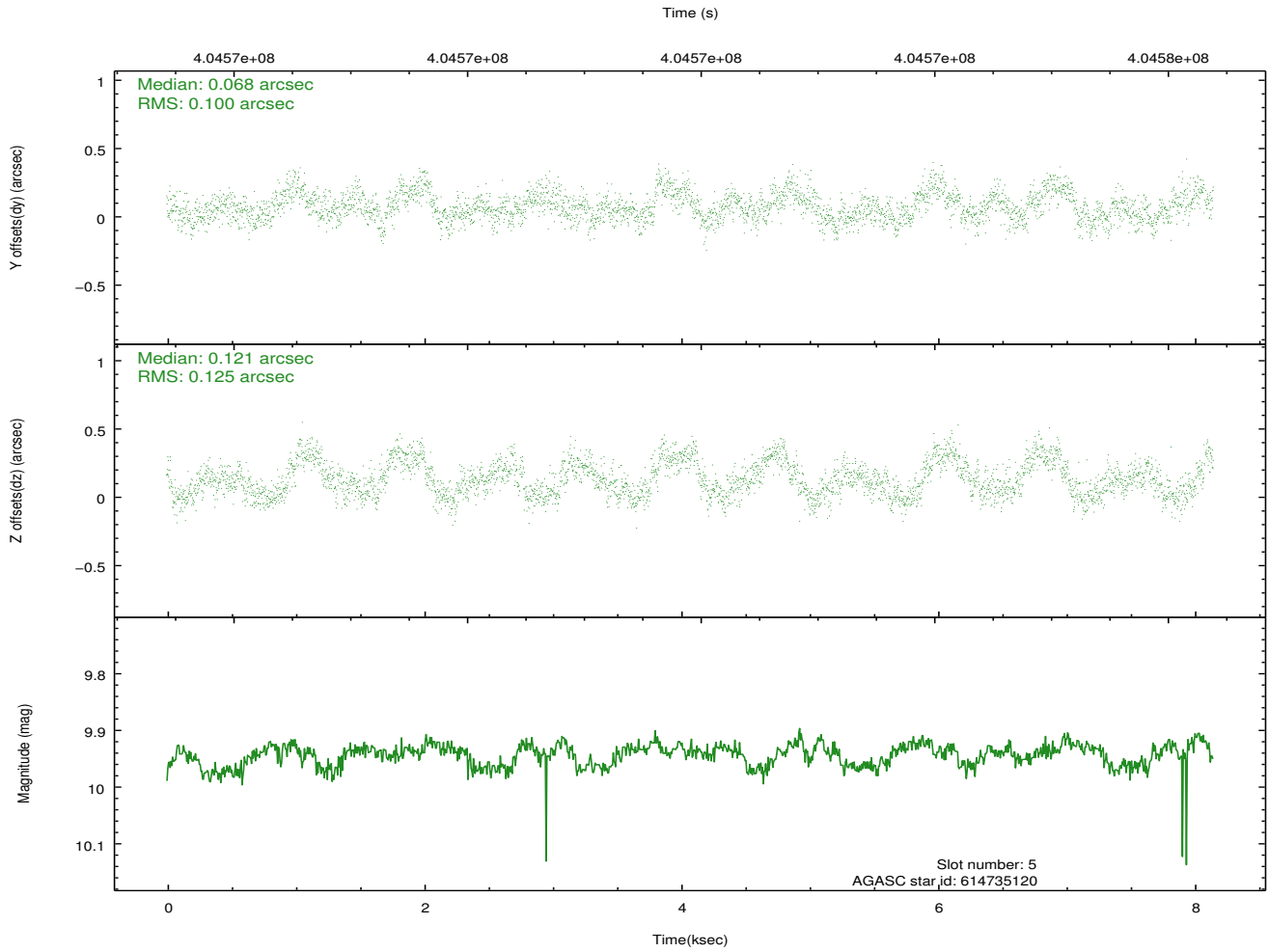
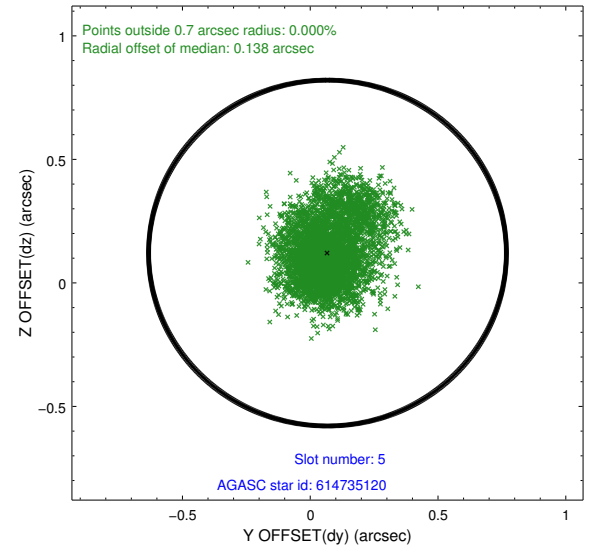
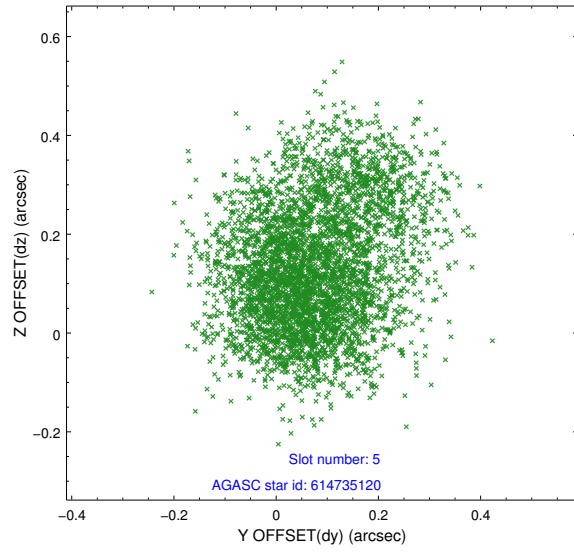
### 2.4.1 Slot 3



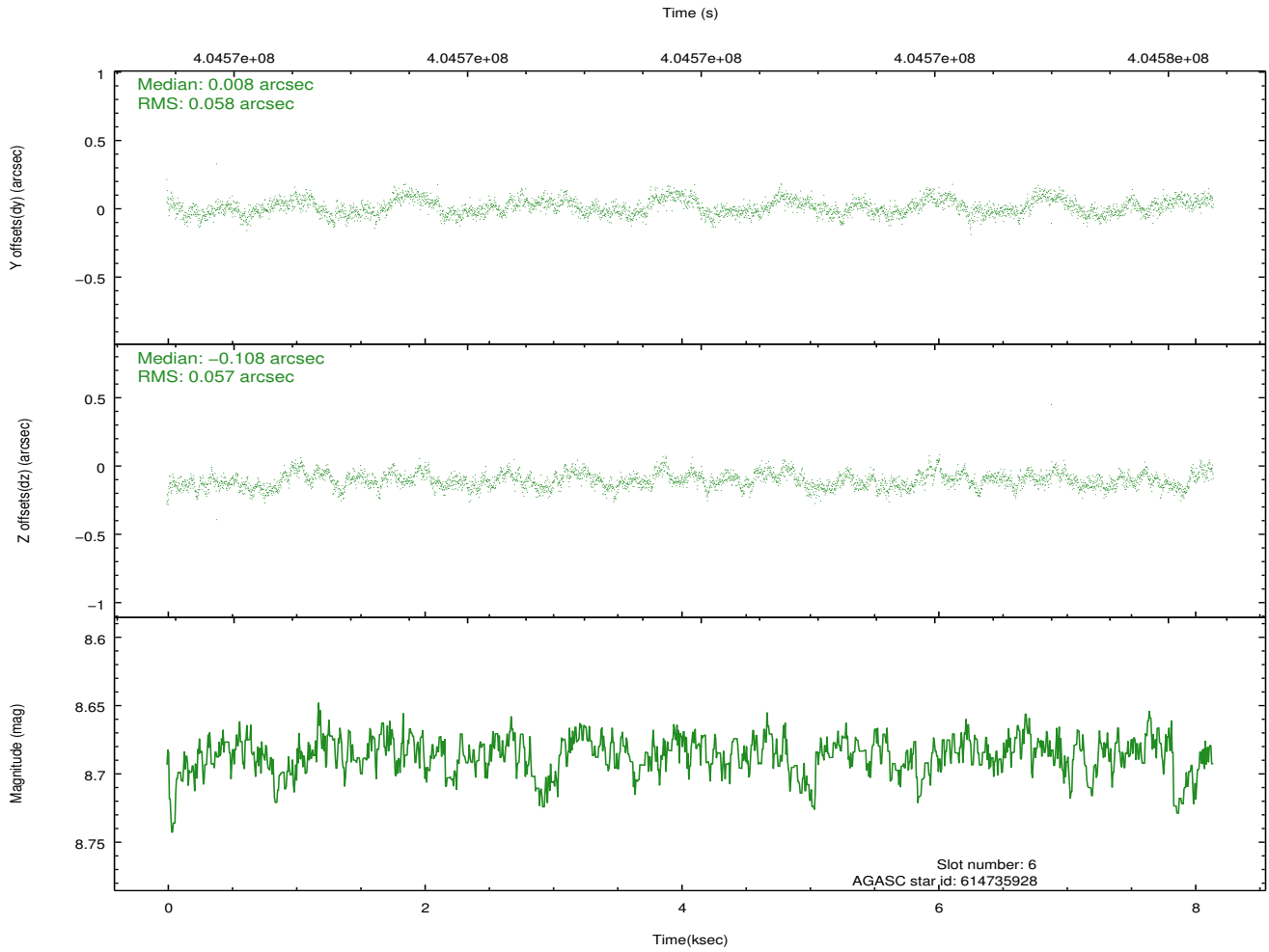
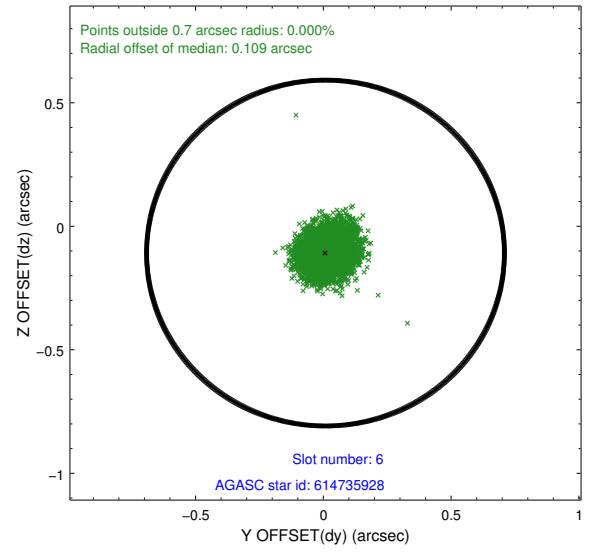
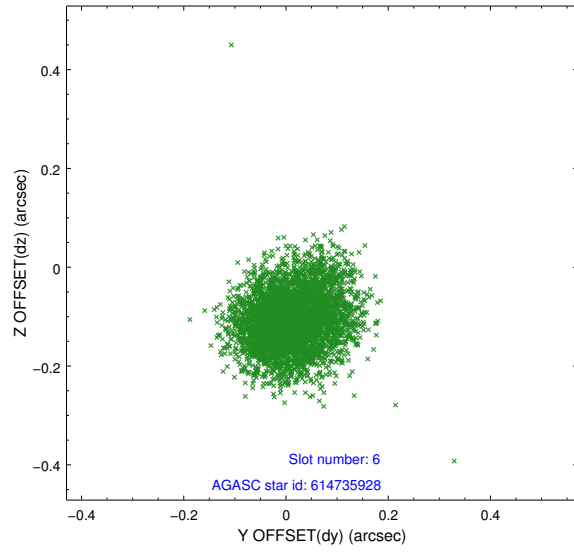
## 2.4.2 Slot 4



### 2.4.3 Slot 5



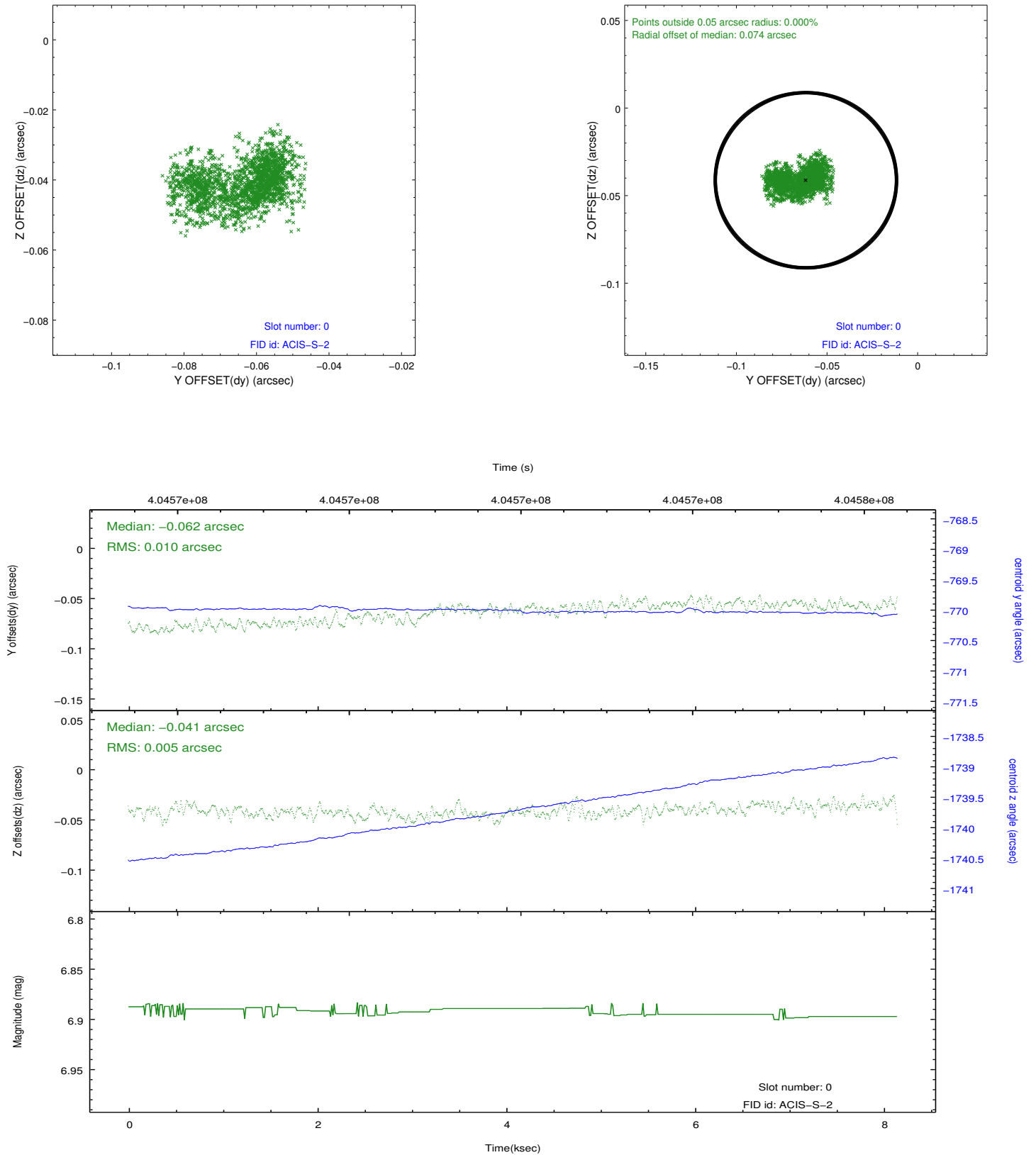
## 2.4.4 Slot 6



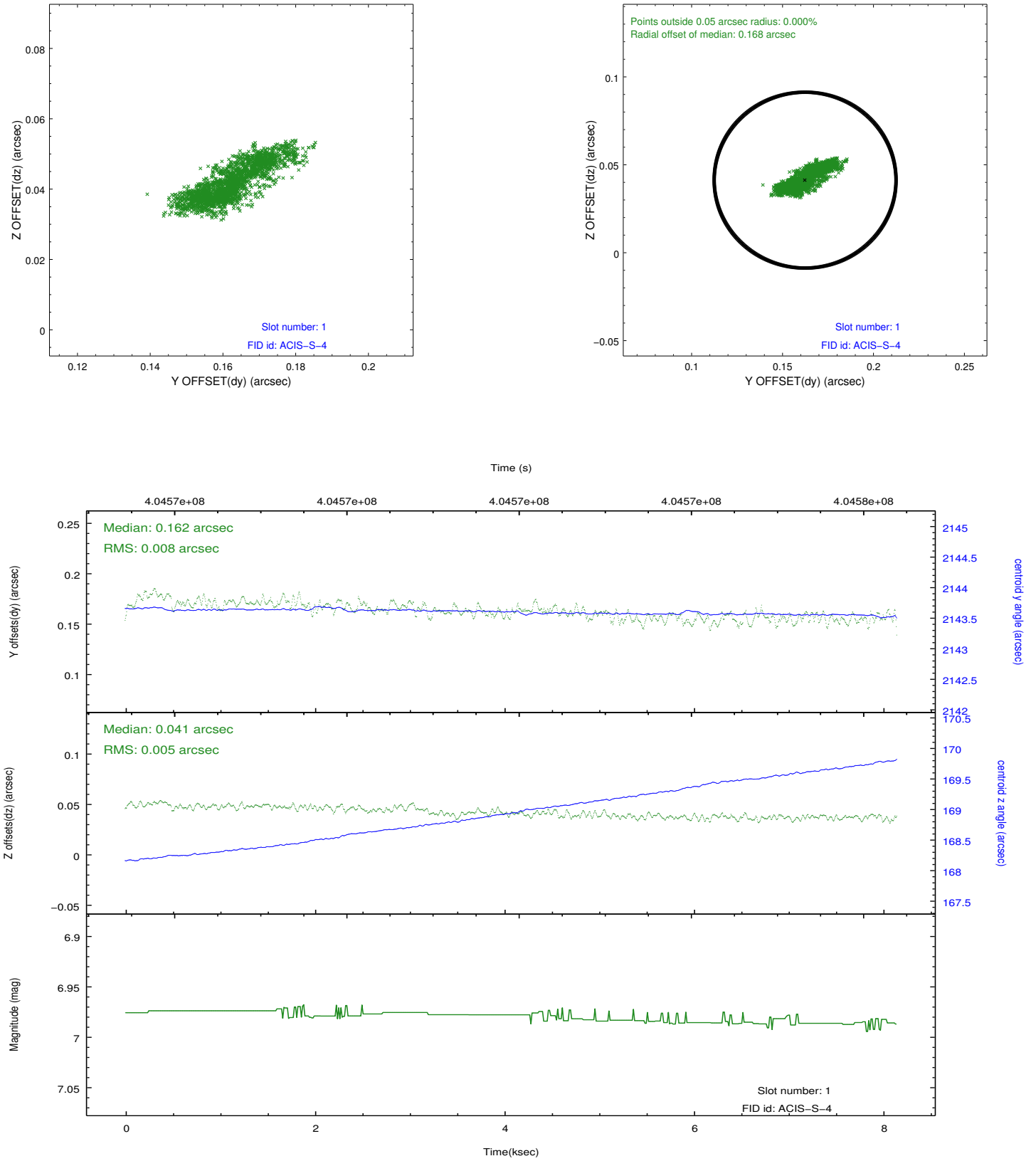


## 2.5 FID Slots

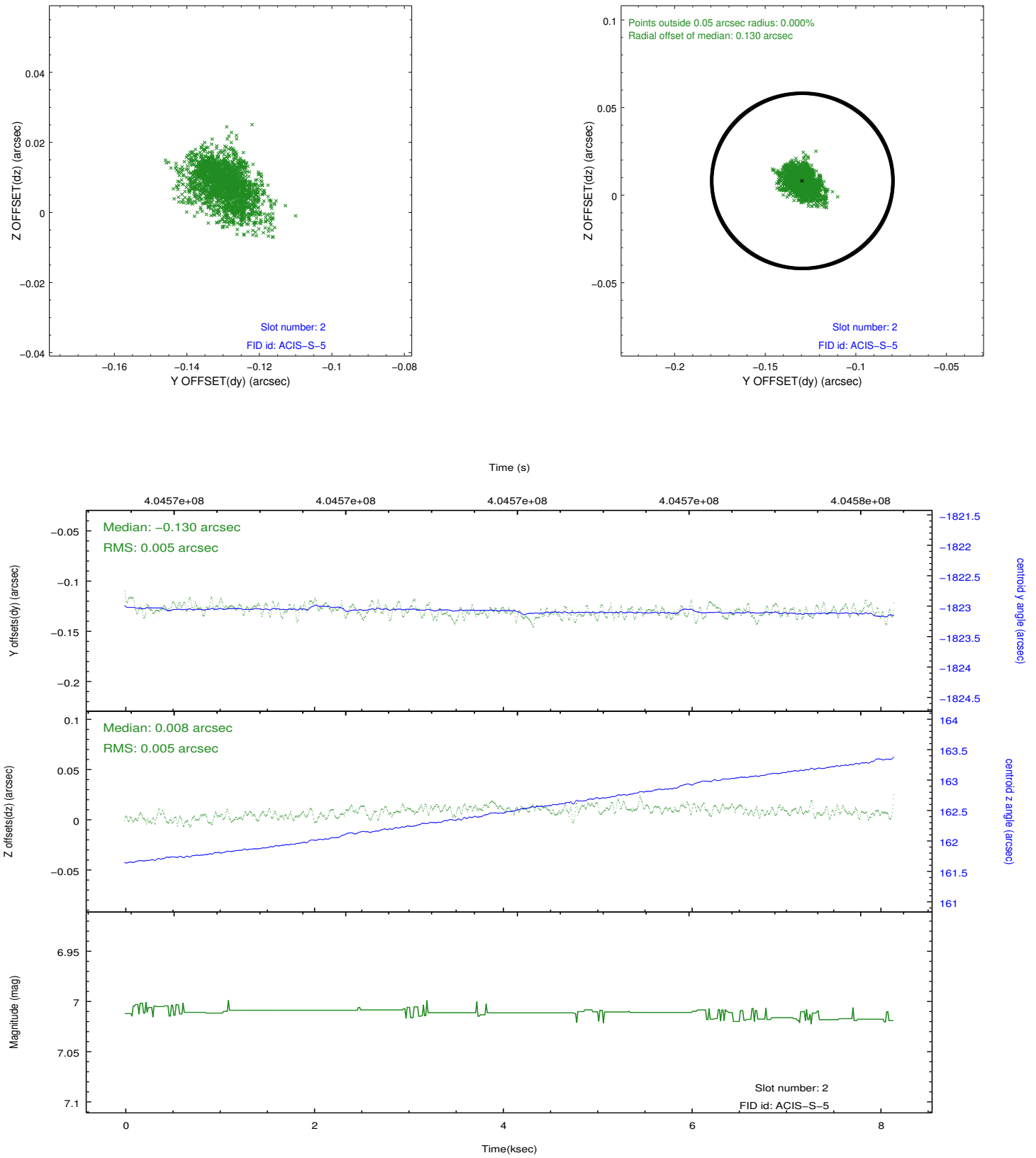
### 2.5.1 Slot 0



## 2.5.2 Slot 1



### 2.5.3 Slot 2



## A Summary

### A.1 Status

V&V Scientist	Jen Lauer
V&V Date (YYYY-MM-DD)	2012.07.16
V&V Edition	1
V&V Disposition and Status	OK
V&V Charge Time	8.0538000619411

### A.2 Comments

The guide star in slot 7 was removed from the aspect solution due to poor data quality. The aspect solution is improved by the removal of this guide star from the solution.