

V&V Reference Report

L2 ASCDS Version : 8.4.3

Observation 14237 - L2 Version 2
Chandra X-Ray Center

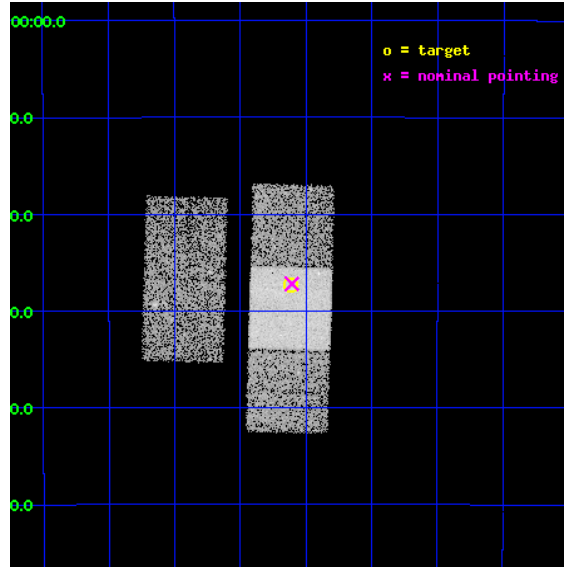
L2 Processing Date : Mar 2 2012

Contents

1	Front	2
2	OBI	3
2.1	OBI	3
2.1.1	Images	3
2.1.2	Bias	3
2.1.3	Parameters	4
2.1.4	Events	4
2.2	Compared Parameters	5
2.3	Aspect	6
2.4	Star Slots	9
2.4.1	Slot 3	9
2.4.2	Slot 4	10
2.4.3	Slot 5	11
2.4.4	Slot 6	12
2.4.5	Slot 7	13
2.5	FID Slots	14
2.5.1	Slot 0	14
2.5.2	Slot 1	15
2.5.3	Slot 2	16
A	Summary	17
A.1	Status	17
A.2	Comments	17

1 Front

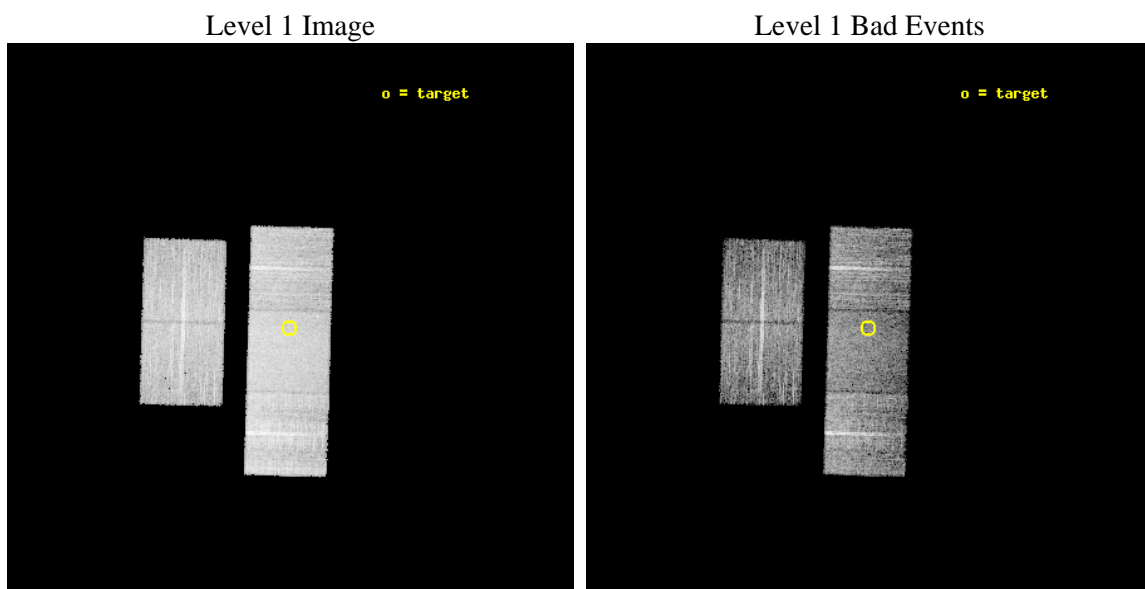
seq_num	501788	Sequence number
obs_id	14237	Observation id
title	Resolving the mystery of GRB 110709B	Proposal title
observer	Dr Andrew Levan	Principal investigator
object	GRB110709B	Source name
dtcycle	0	
cycle	P	events from which exps? Prim/Second/Both
ra_targ	164.654583	Observer's specified target RA [deg]
dec_targ	-23.454972	Observer's specified target Dec [deg]
ra_nom	164.65175947498	Nominal RA [deg]
dec_nom	-23.453412467372	Nominal Dec [deg]
roll_nom	91.610655066592	Nominal Roll [deg]
revision	2	Processing version of data
ontime	10043.924993336	Sum of GTIs [s]
livetime	9912.6937190683	Livetime [s]
ontime2	10043.760833323	Sum of GTIs [s]
ontime3	10043.84291333	Sum of GTIs [s]
ontime6	10043.883953333	Sum of GTIs [s]
ontime7	10043.924993336	Sum of GTIs [s]
ontime8	10043.801873326	Sum of GTIs [s]
l2events	60794	Number of level 2 events



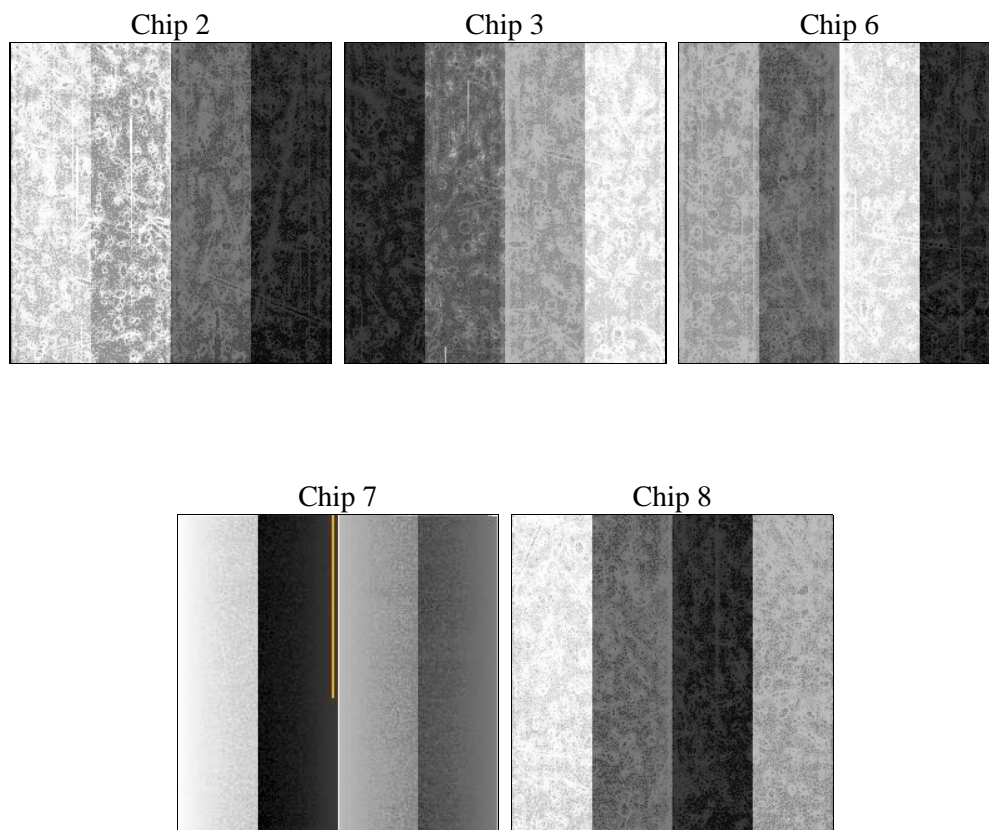
2 OBI

2.1 OBI

2.1.1 Images



2.1.2 Bias



2.1.3 Parameters

obi_num	0	Obi number	sched_exp_time	10000.000000	[s] Scheduled observation exposure time
ascdsver	8.4.3	Processing system revision	ontime	10043.924993336	Sum of GTIs [s]
caldsver	4.4.8	 	ontime2	10043.760833323	Sum of GTIs [s]
date	2012-03-02T12:01:16	Date and time of file creation	ontime3	10043.84291333	Sum of GTIs [s]
revision	2	Processing version of data	ontime6	10043.883953333	Sum of GTIs [s]
			ontime7	10043.924993336	Sum of GTIs [s]
			ontime8	10043.801873326	Sum of GTIs [s]
			l1events	345281	Number of level 1 events

2.1.4 Events

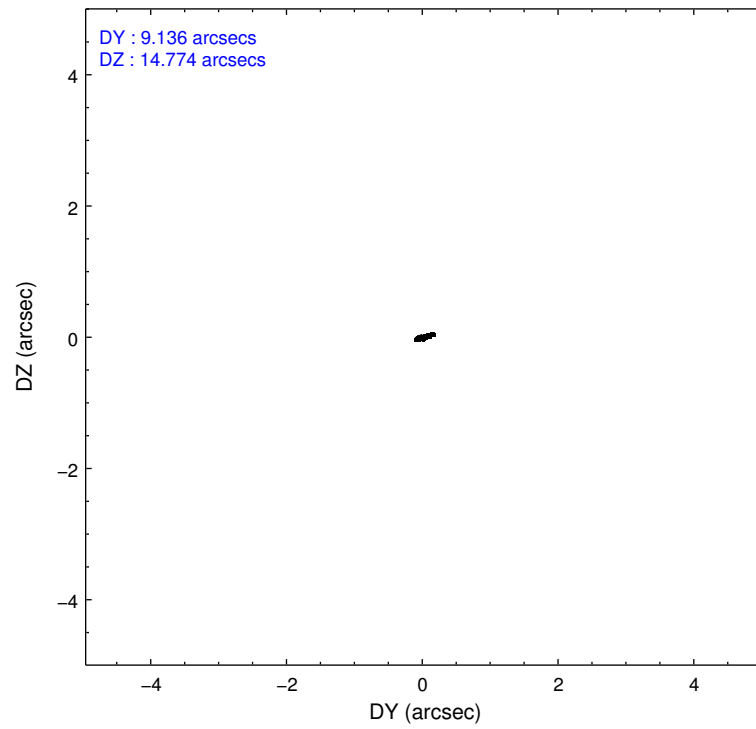
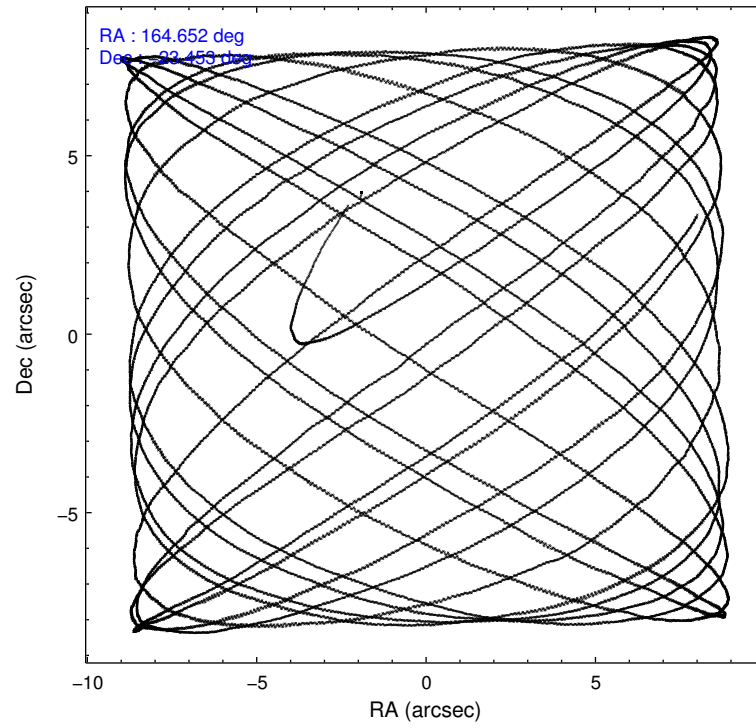
	ccd 2	ccd 3	ccd 6	ccd 7	ccd 8
level 1 events	58380	58997	62185	80628	85091
rejected events	51412	52303	54586	45037	62175
rejected %	88%	88%	87%	55%	73%

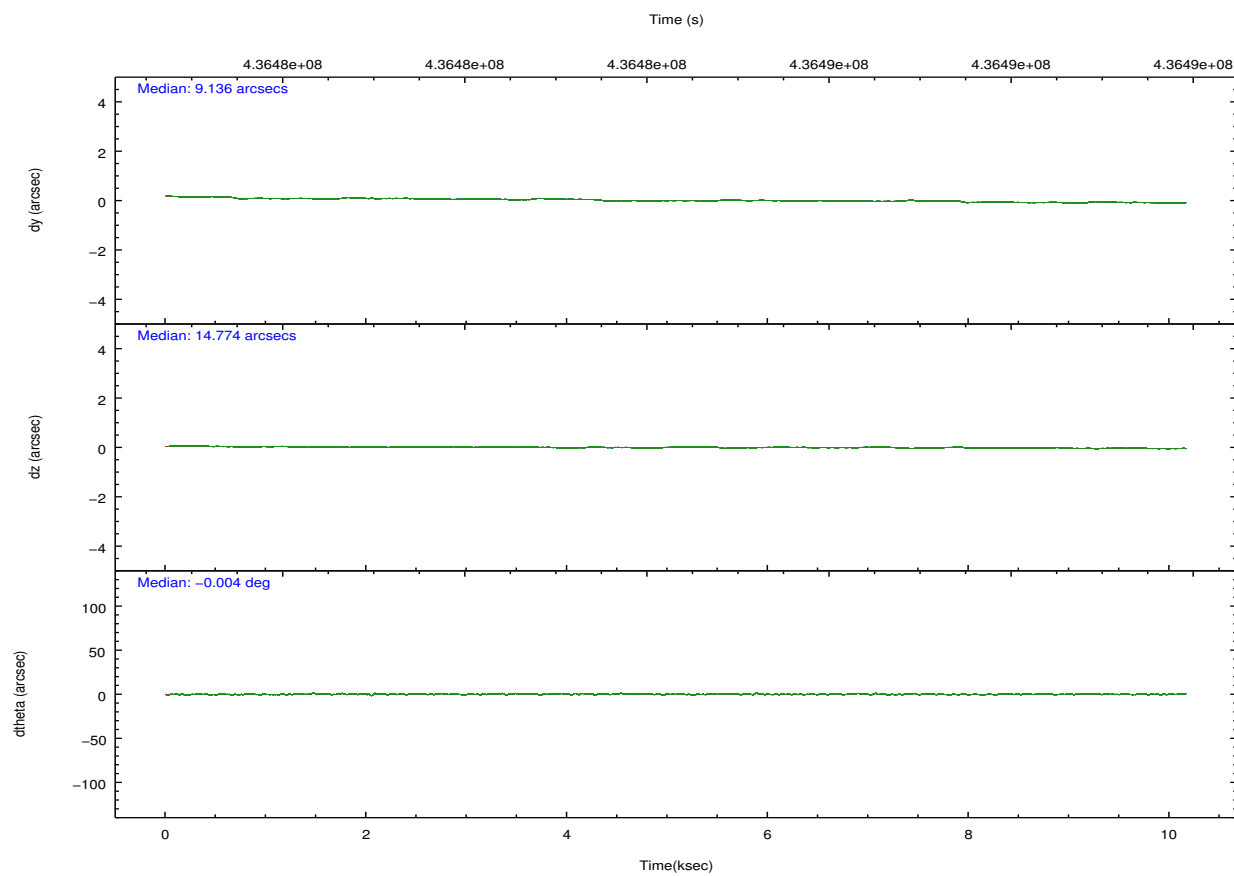
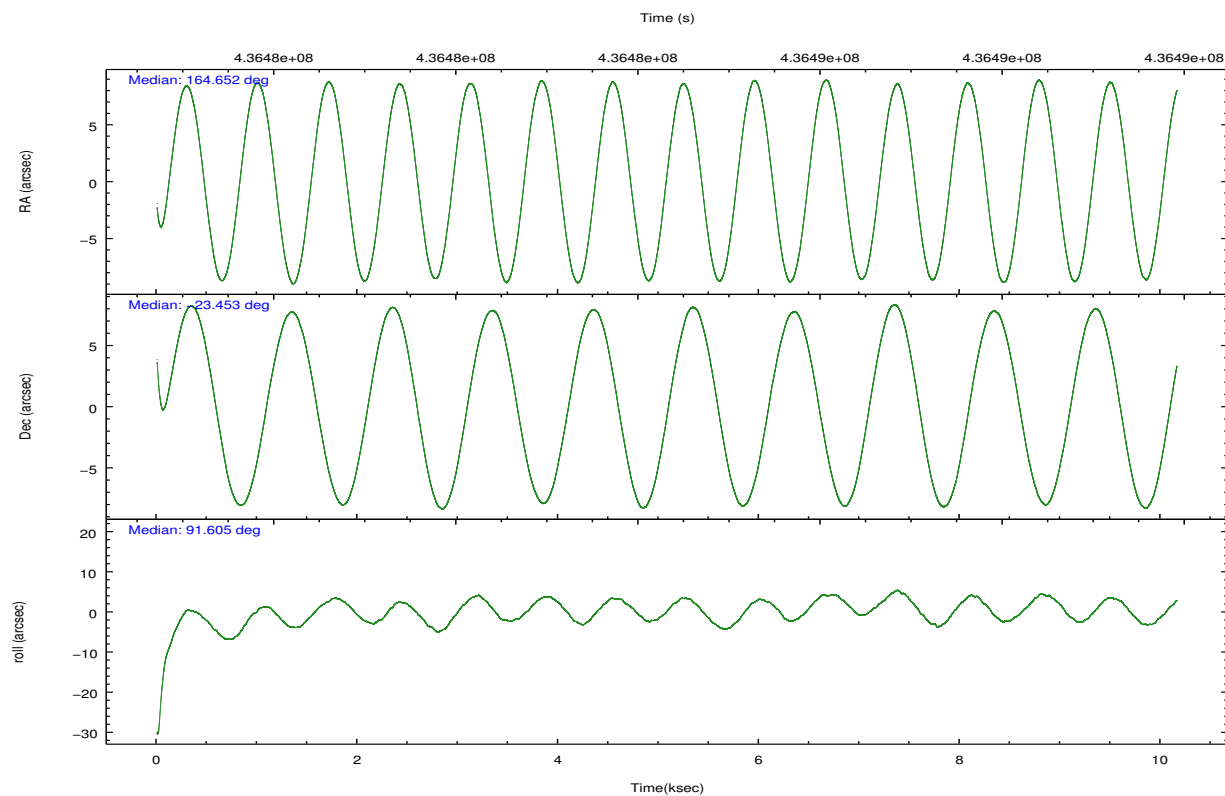
	ccd 2	ccd 3	ccd 6	ccd 7	ccd 8
grade 0 events	2481	2325	2661	3185	6691
	4%	3%	4%	3%	7%
grade 1 events	32	33	35	103	65
	0%	0%	0%	0%	0%
grade 2 events	1665	1459	1694	7205	5244
	2%	2%	2%	8%	6%
grade 3 events	724	785	767	3156	2473
	1%	1%	1%	3%	2%
grade 4 events	721	719	768	3006	2255
	1%	1%	1%	3%	2%
grade 5 events	2677	3031	3020	8369	4305
	4%	5%	4%	10%	5%
grade 6 events	1379	1408	1711	19052	6259
	2%	2%	2%	23%	7%
grade 7 events	48701	49237	51529	36552	57799
	83%	83%	82%	45%	67%

2.2 Compared Parameters

Parameter	Planned	Actual	Parameter	Planned	Actual
Instrument	ACIS	ACIS	Obspar format version number	7	7
Detector	ACIS-23678	ACIS-23678	Obspar file type	PREDICTED	ACTUAL
Grating	NONE	NONE	Obspar update status	NONE	UPDATED
Data mode	FAINT	FAINT	CCD I0 on	N	N
Observation mode	POINTING	POINTING	CCD I1 on	N	N
[deg] Pointing RA	164.667714	164.6517594749785	CCD I2 on	O3	Y
[deg] Pointing Dec	-23.476505	-23.45341246737183	CCD I3 on	O2	Y
[deg] Pointing Roll	91.460415	91.61065506659183	CCD S0 on	N	N
[mm] SIM focus pos	-0.684267	-0.6828225247311905	CCD S1 on	N	N
[mm] SIM defocus	0	0.001444936568705701	CCD S2 on	Y	Y
[mm] SIM translation stage pos	-190.132523	-190.145094680475	CCD S3 on	Y	Y
[mm] SIM translation stage offset	0	0.01257209746719923	CCD S4 on	O1	Y
[s] Observation start time (MET)	436479403.184000	436477900.26714	CCD S5 on	N	N
Observation start date	2011-10-31T20:15:37	2011-10-31T19:51:40	Number of optional ACIS chips dropped	0	0
[s] Observation end time (MET)	436489403.184000	436490654.85531	On-chip summing requested	N	N
Observation end date	2011-10-31T23:02:17	2011-10-31T23:24:14	Subarray requested	NONE	NONE
Read mode	TIMED	TIMED	Alternating exposures requested	N	N
			[s] Primary exposure time	0.000000	3.1

2.3 Aspect



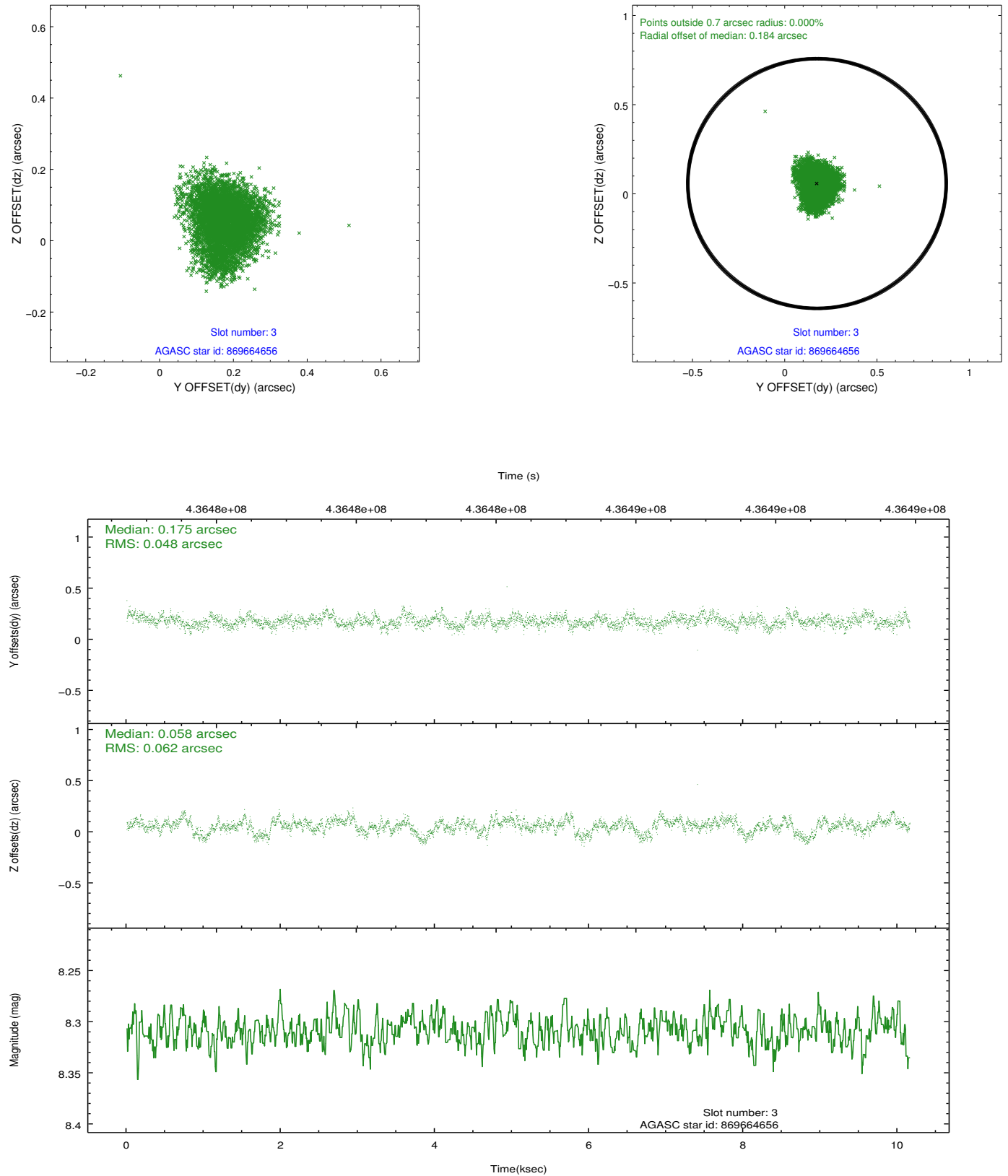


Slot Statistics

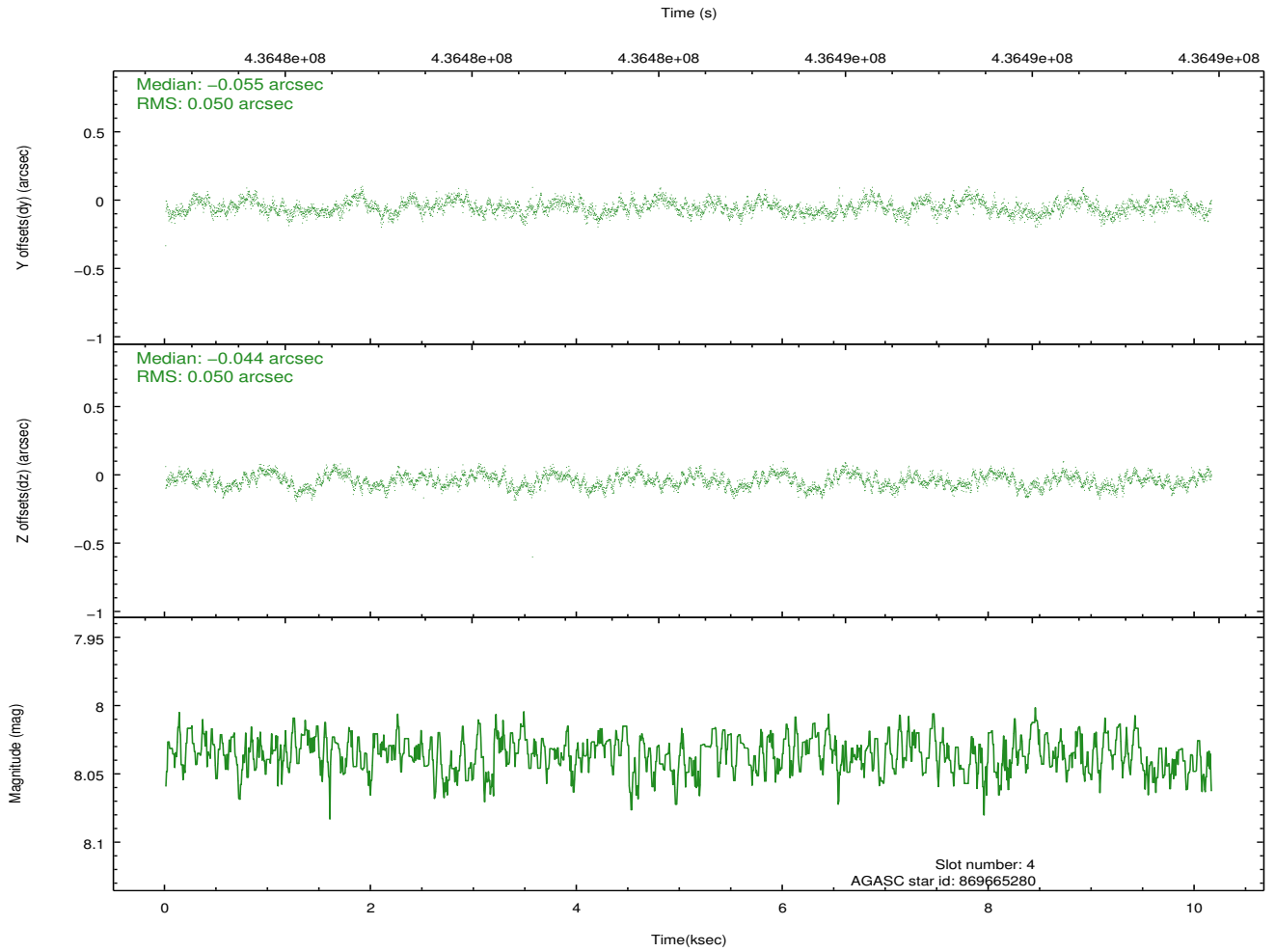
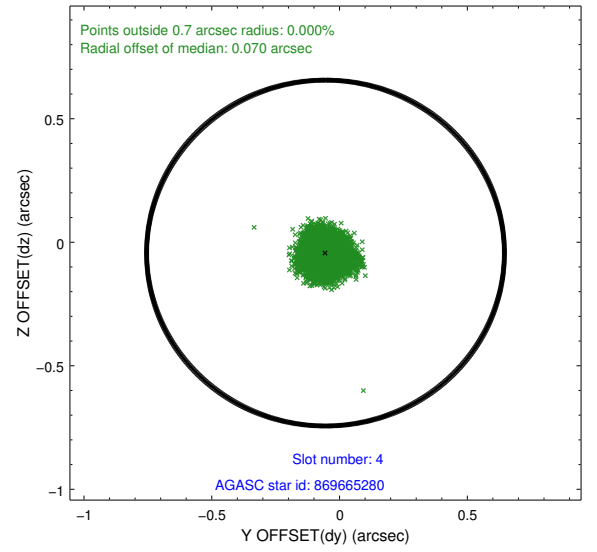
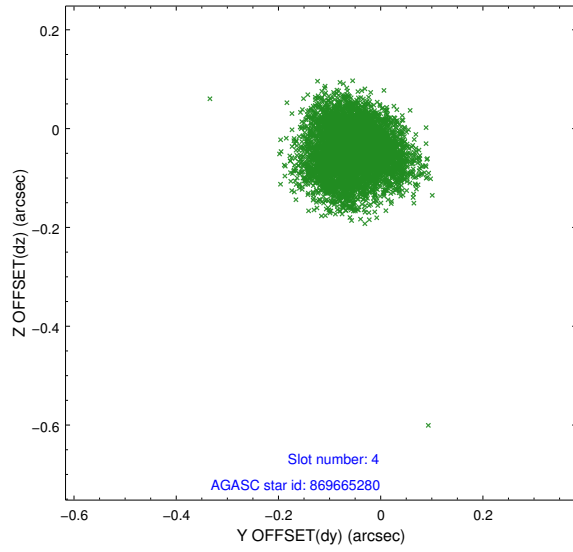
slot	status	id	mag	n_pts	med_dy	med_dz	dr1	dr2	ra	dec	mean_y	mean_z
0	FID	ACIS-S-2	6.90	2478	-0.065	-0.054	0.006	0.011	0.000000	0.000000	-762.03	-1736.09
1	FID	ACIS-S-4	6.98	2478	0.238	0.046	0.006	0.012	0.000000	0.000000	2151.32	171.94
2	FID	ACIS-S-5	7.01	2478	-0.204	0.017	0.007	0.011	0.000000	0.000000	-1814.34	166.19
3	GUIDE	869664656	8.31	4956	0.175	0.058	0.084	0.137	164.771765	-23.254839	788.96	-363.27
4	GUIDE	869665280	8.04	4952	-0.055	-0.044	0.076	0.114	164.030294	-22.883645	2183.08	2059.47
5	GUIDE	869669456	8.58	4950	0.122	-0.088	0.062	0.104	164.454796	-24.038044	-2002.80	751.59
6	GUIDE	869664256	8.25	4955	-0.097	0.080	0.081	0.137	165.133196	-22.801285	2388.15	-1605.68
7	GUIDE	869664776	9.64	4952	-0.149	-0.005	0.118	0.186	165.128859	-22.827912	2293.59	-1589.12

2.4 Star Slots

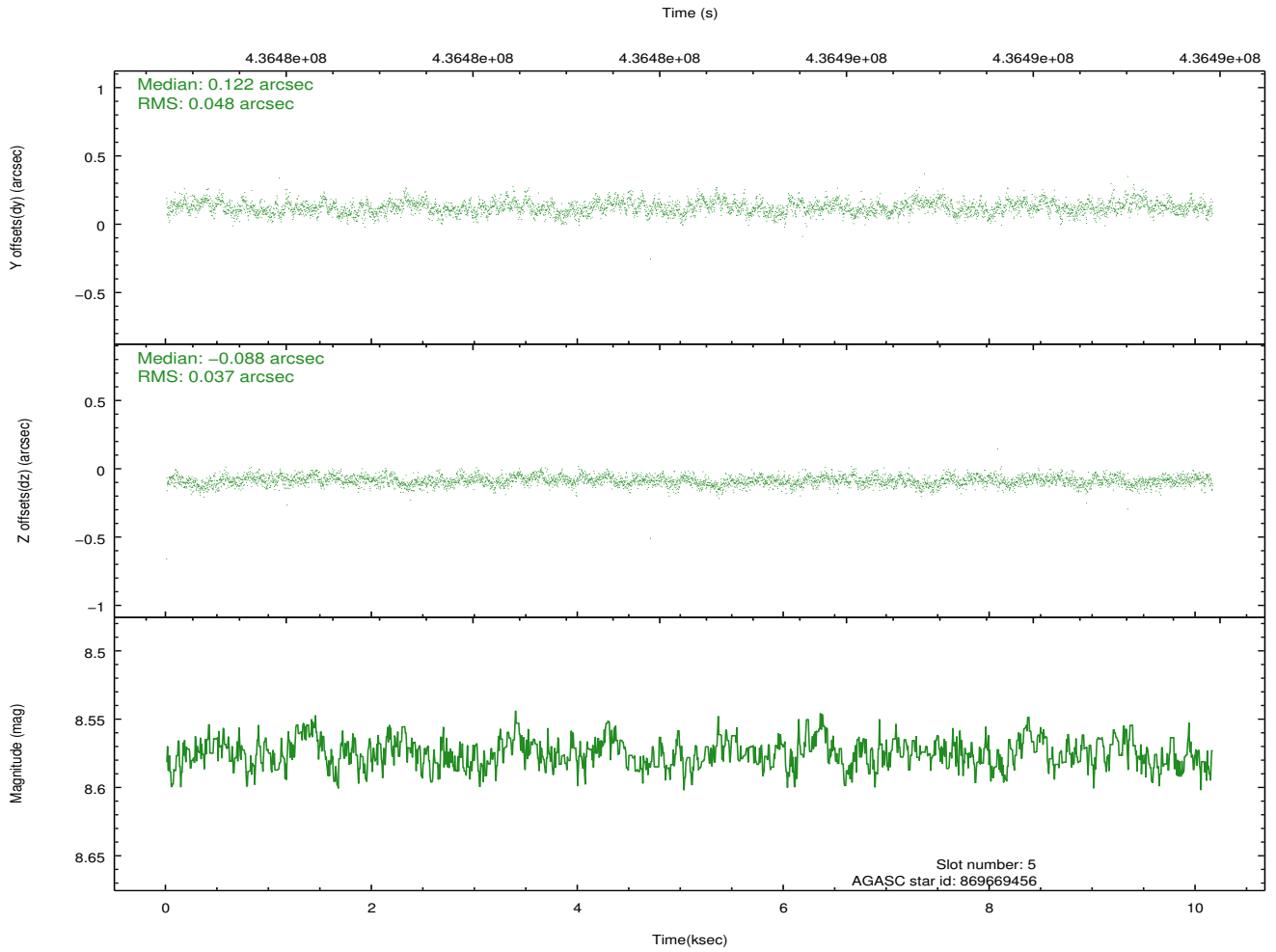
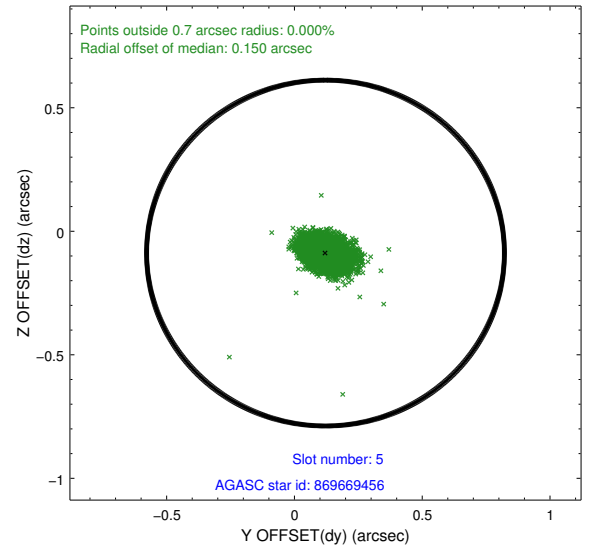
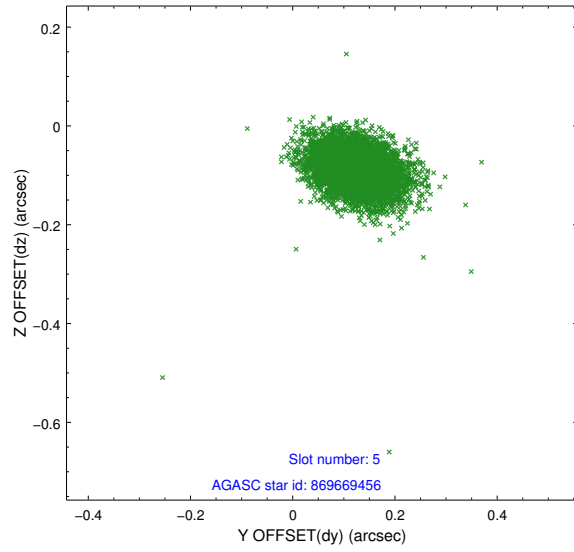
2.4.1 Slot 3



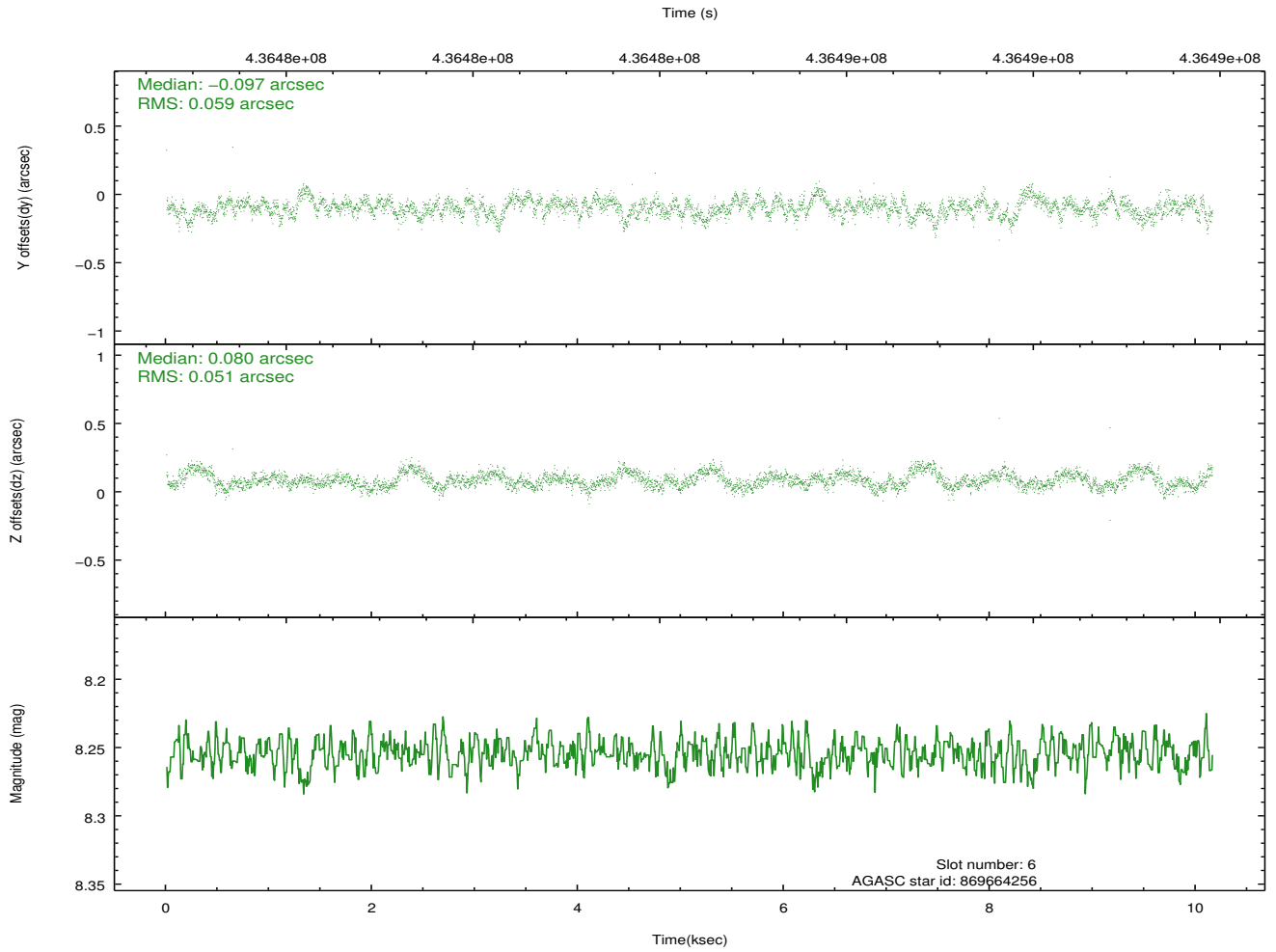
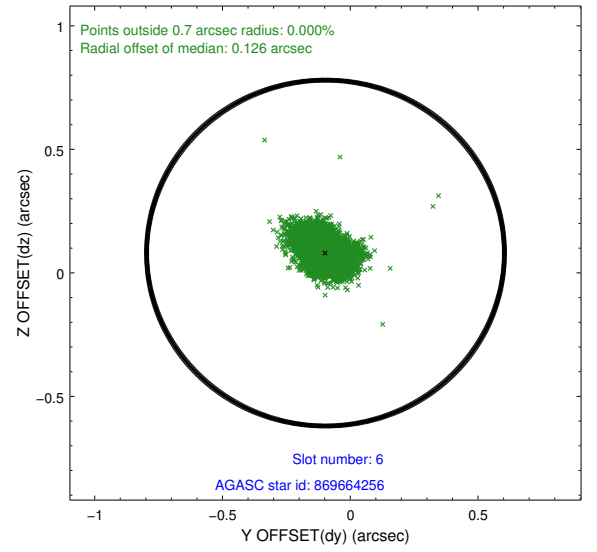
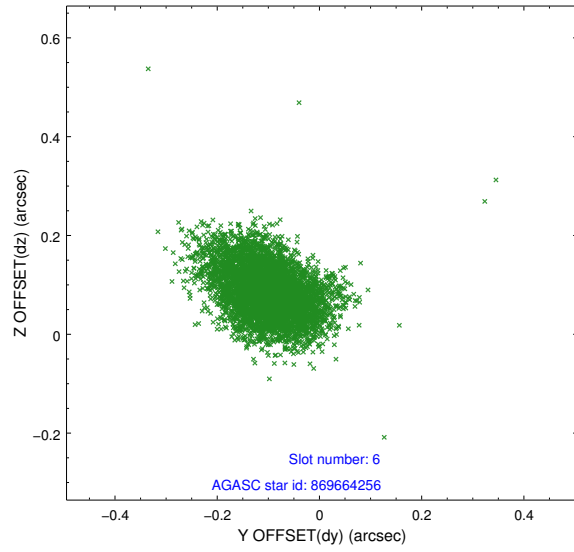
2.4.2 Slot 4



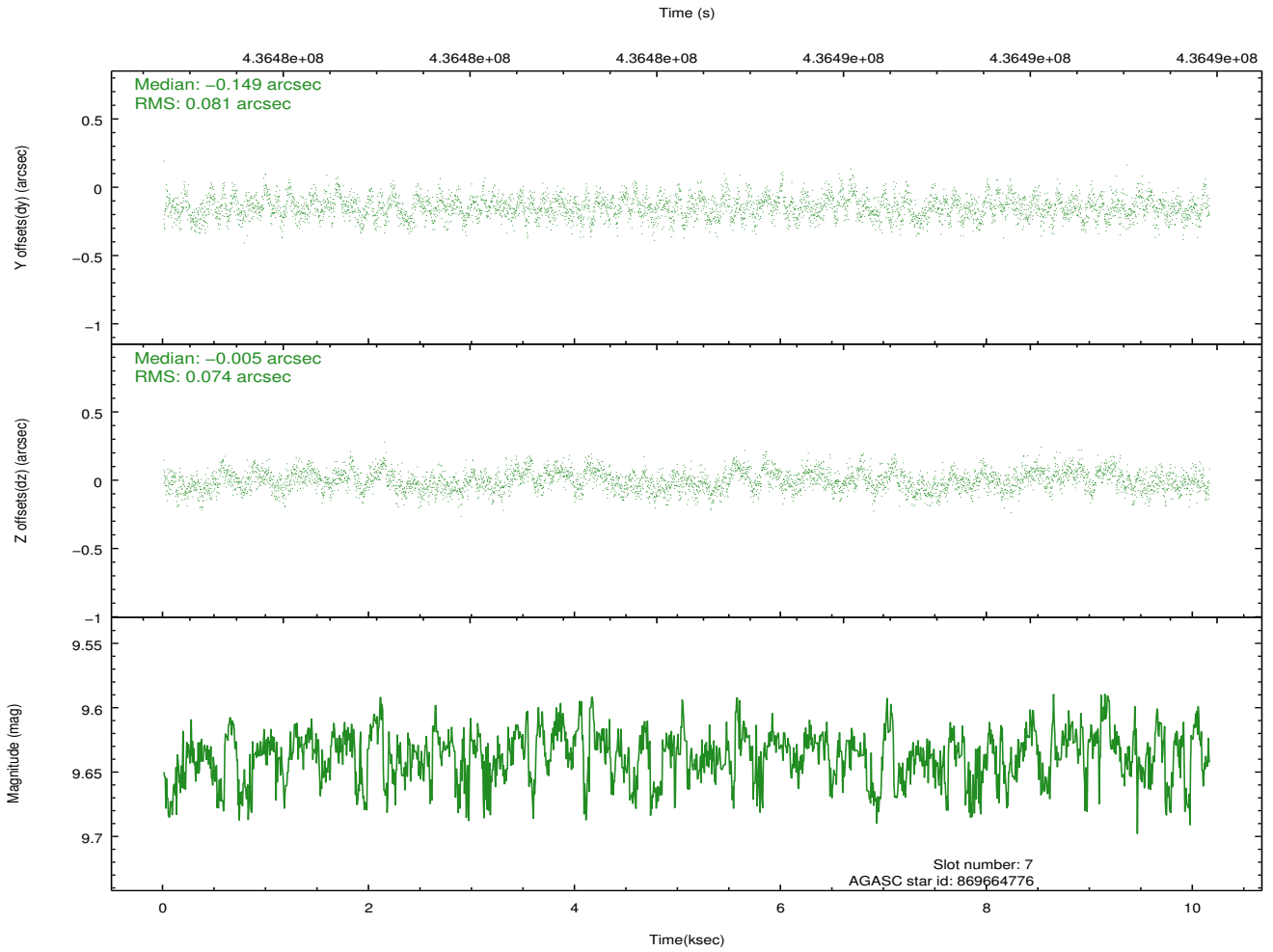
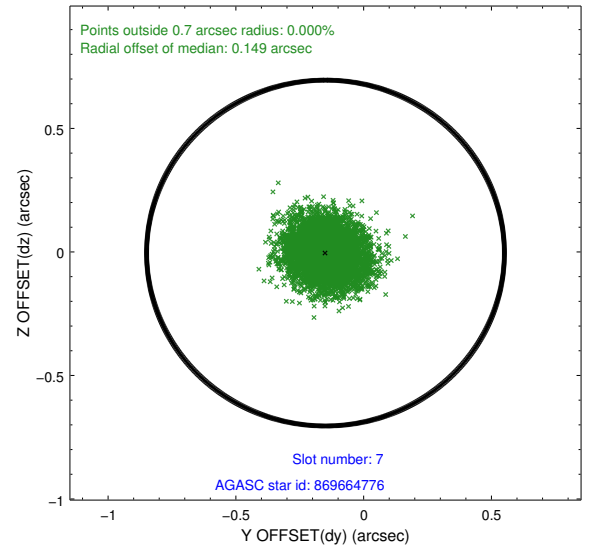
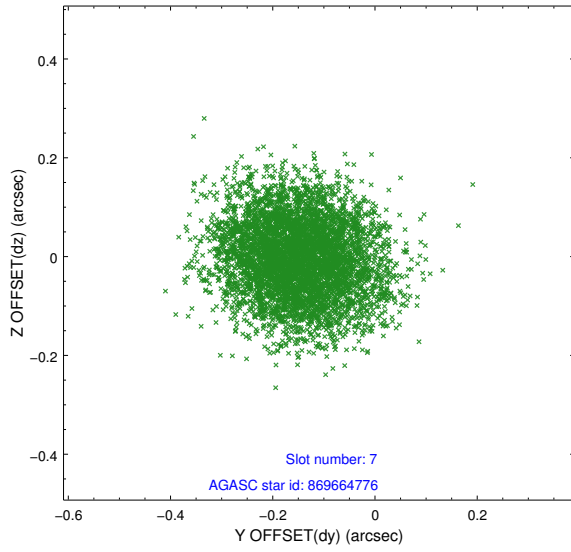
2.4.3 Slot 5



2.4.4 Slot 6

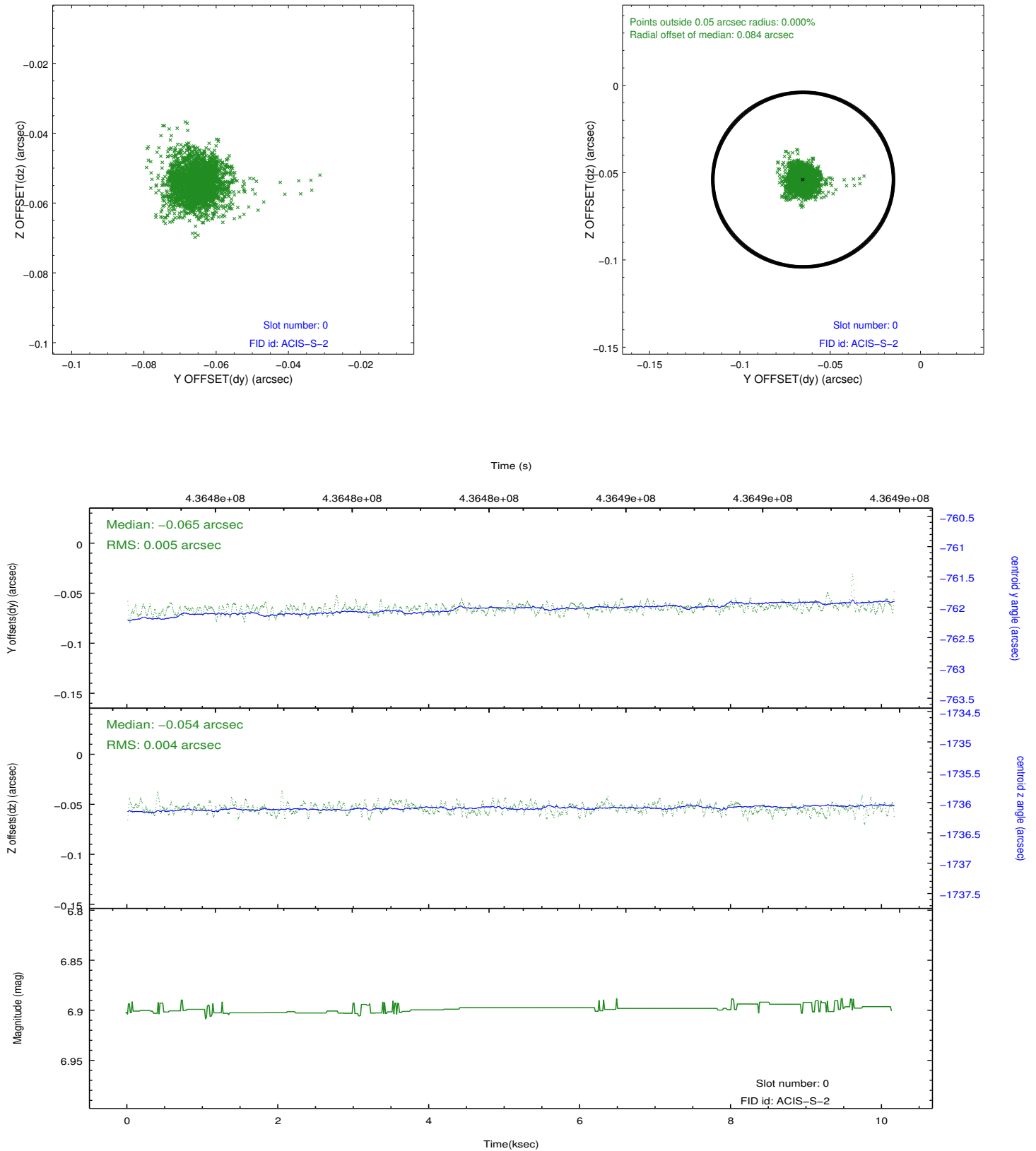


2.4.5 Slot 7

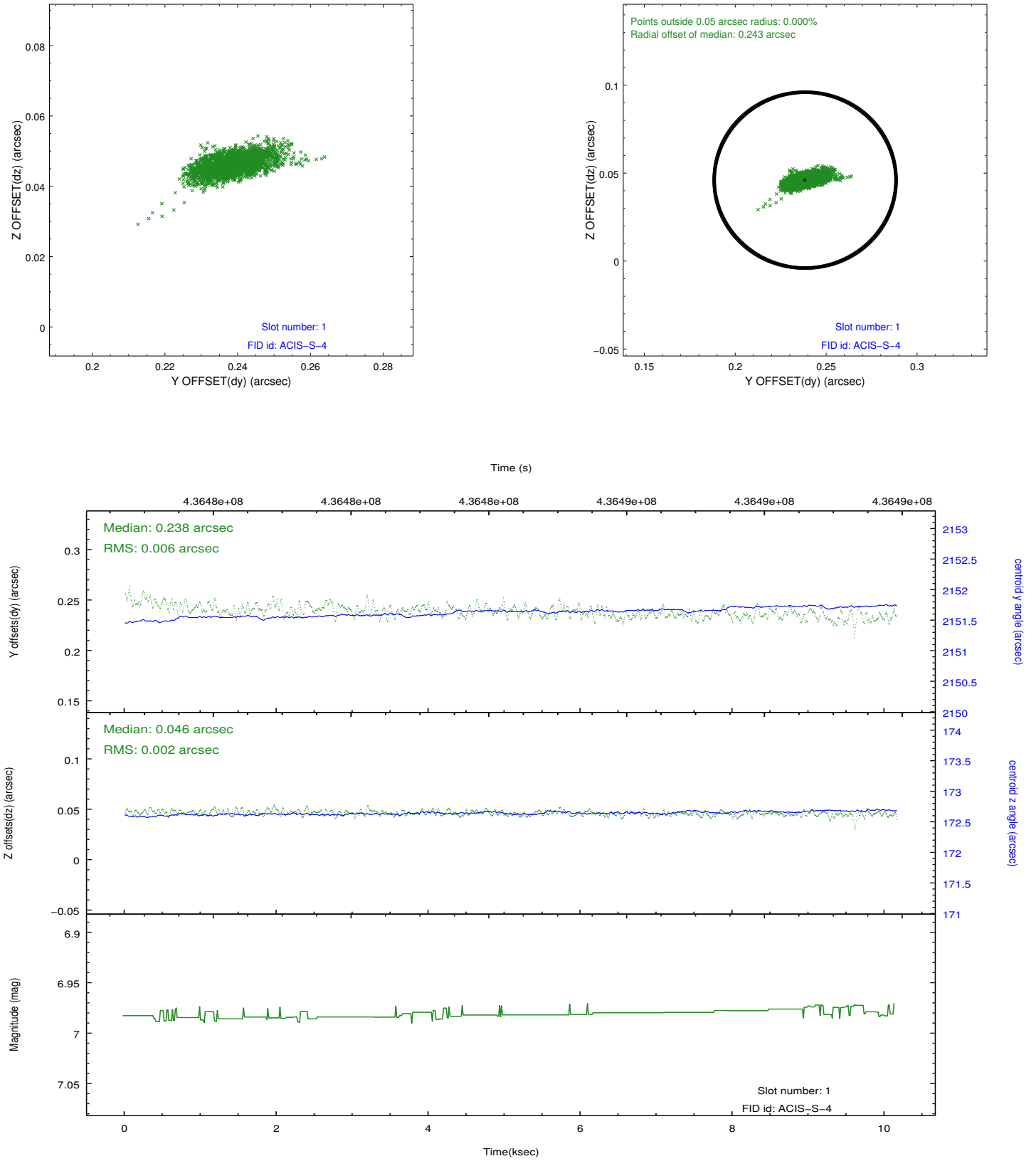


2.5 FID Slots

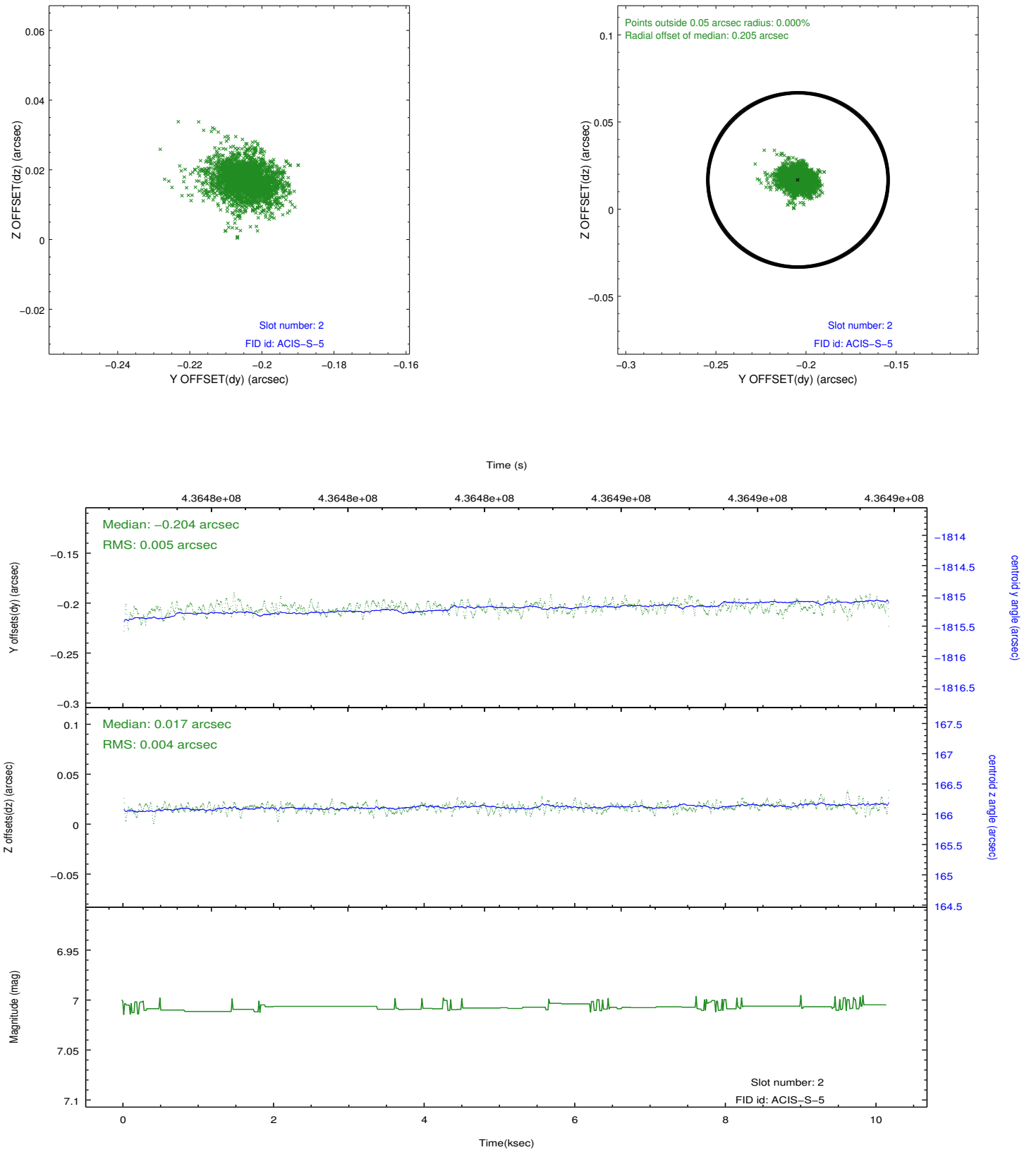
2.5.1 Slot 0



2.5.2 Slot 1



2.5.3 Slot 2



A Summary

A.1 Status

V&V Scientist	Jen Lauer
V&V Date (YYYY-MM-DD)	2012.03.02
V&V Edition	1
V&V Disposition and Status	OK
V&V Charge Time	10.043924987733

A.2 Comments