

V&V Reference Report

L2 ASCDS Version : 8.4.3

Observation 12151 - L2 Version 2
Chandra X-Ray Center

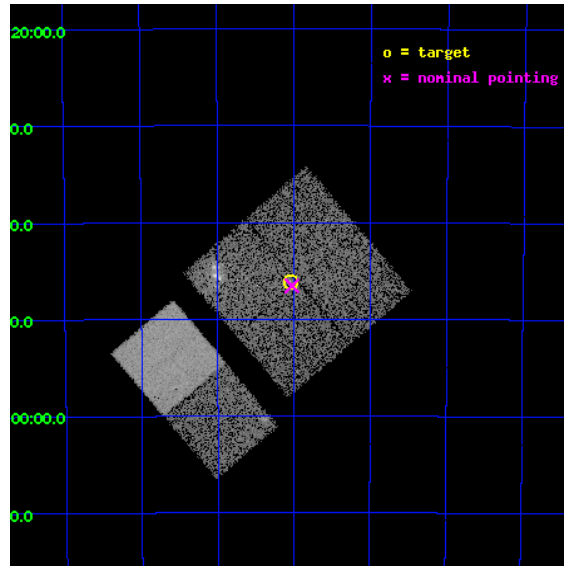
L2 Processing Date : Mar 18 2012

Contents

1	Front	2
2	OBI	3
2.1	OBI	3
2.1.1	Images	3
2.1.2	Bias	3
2.1.3	Parameters	4
2.1.4	Events	4
2.2	Compared Parameters	5
2.3	Aspect	6
2.4	Star Slots	9
2.4.1	Slot 3	9
2.4.2	Slot 4	10
2.4.3	Slot 5	11
2.4.4	Slot 6	12
2.4.5	Slot 7	13
2.5	FID Slots	14
2.5.1	Slot 0	14
2.5.2	Slot 1	15
2.5.3	Slot 2	16
A	Summary	17
A.1	Status	17
A.2	Comments	17

1 Front

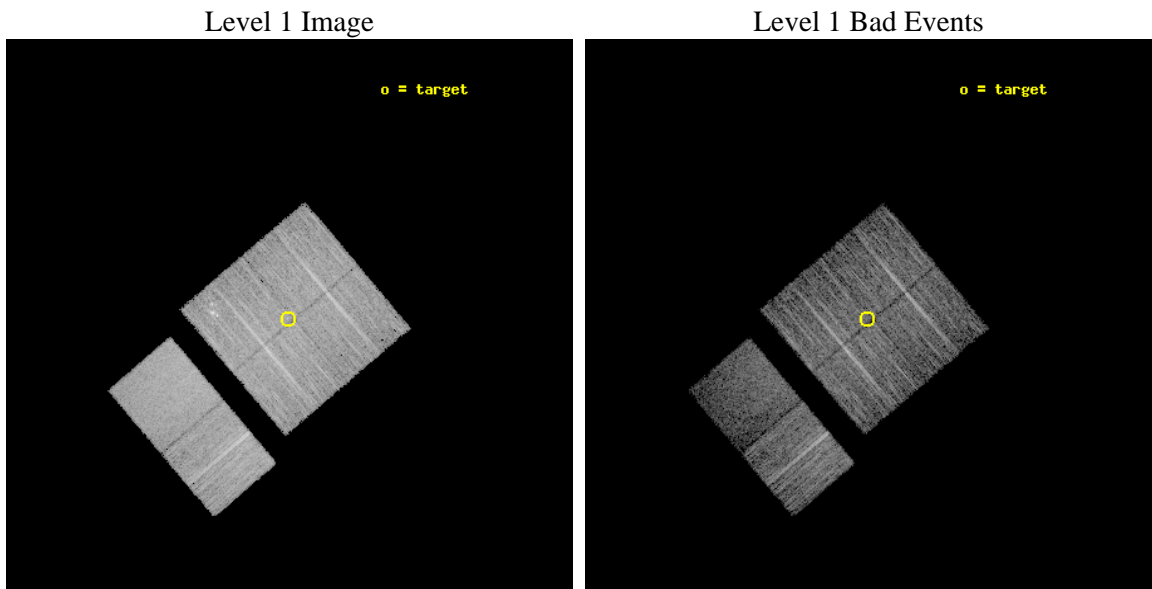
seq_num	501366	Sequence number
obs_id	12151	Observation id
title	Snap-shot survey of new galactic gamma-ray sources.	Proposal title
observer	Prof. Gordon Garmire	Principal investigator
object	PSR J1022-5746	Source name
dtcycle	0	
cycle	P	events from which exps? Prim/Second/Both
ra_targ	155.7625	Observer's specified target RA [deg]
dec_targ	-57.768611	Observer's specified target Dec [deg]
ra_nom	155.75653882201	Nominal RA [deg]
dec_nom	-57.776045724982	Nominal Dec [deg]
roll_nom	229.6457600754	Nominal Roll [deg]
revision	2	Processing version of data
ontime	10057.205725253	Sum of GTIs [s]
livetime	9929.8553306372	Livetime [s]
ontime0	10057.082605243	Sum of GTIs [s]
ontime1	10057.123645246	Sum of GTIs [s]
ontime2	10057.164685249	Sum of GTIs [s]
ontime3	10057.205725253	Sum of GTIs [s]
ontime6	10057.287805259	Sum of GTIs [s]
ontime7	10057.246765256	Sum of GTIs [s]
l2events	61195	Number of level 2 events



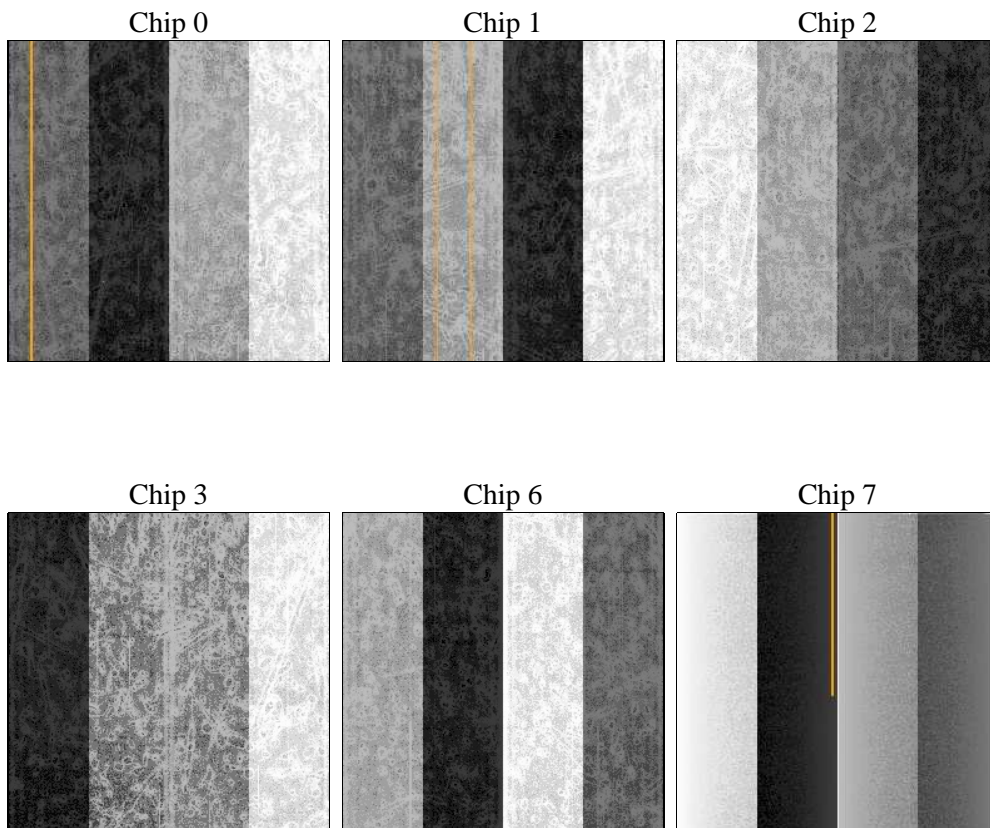
2 OBI

2.1 OBI

2.1.1 Images



2.1.2 Bias



2.1.3 Parameters

obi_num	0	Obi number	sched_exp_time	10000.000000	[s] Scheduled observation exposure time
ascdsver	8.4.3	Processing system revision	ontime	10057.205725253	Sum of GTIs [s]
caldsver	4.4.8	 	ontime0	10057.082605243	Sum of GTIs [s]
date	2012-03-18T18:03:57	Date and time of file creation	ontime1	10057.123645246	Sum of GTIs [s]
revision	2	Processing version of data	ontime2	10057.164685249	Sum of GTIs [s]
			ontime3	10057.205725253	Sum of GTIs [s]
			ontime6	10057.287805259	Sum of GTIs [s]
			ontime7	10057.246765256	Sum of GTIs [s]
			l1events	345162	Number of level 1 events

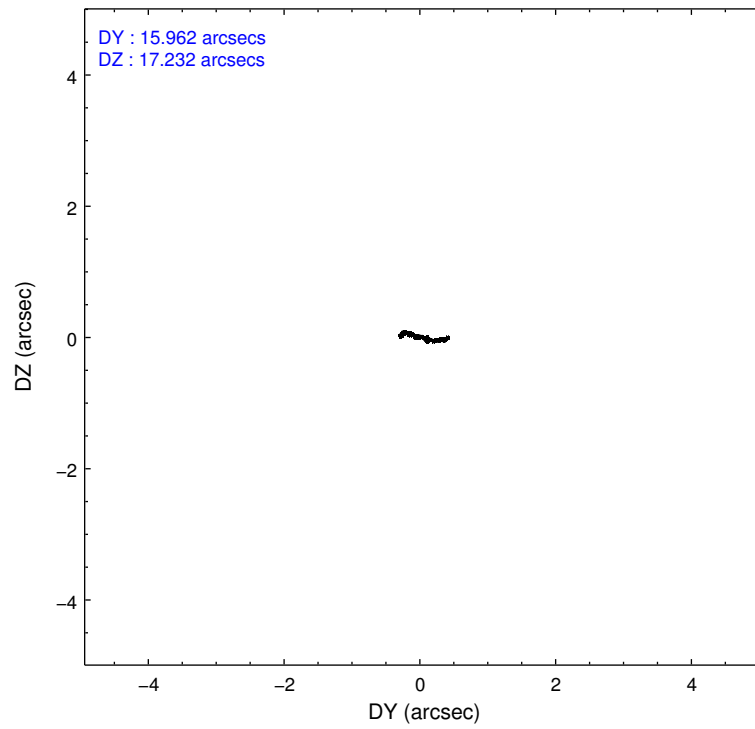
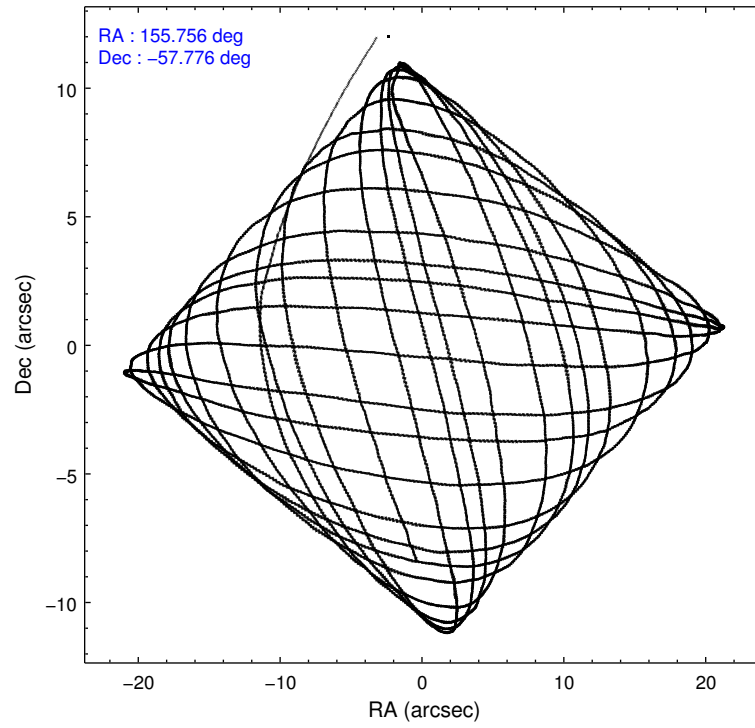
2.1.4 Events

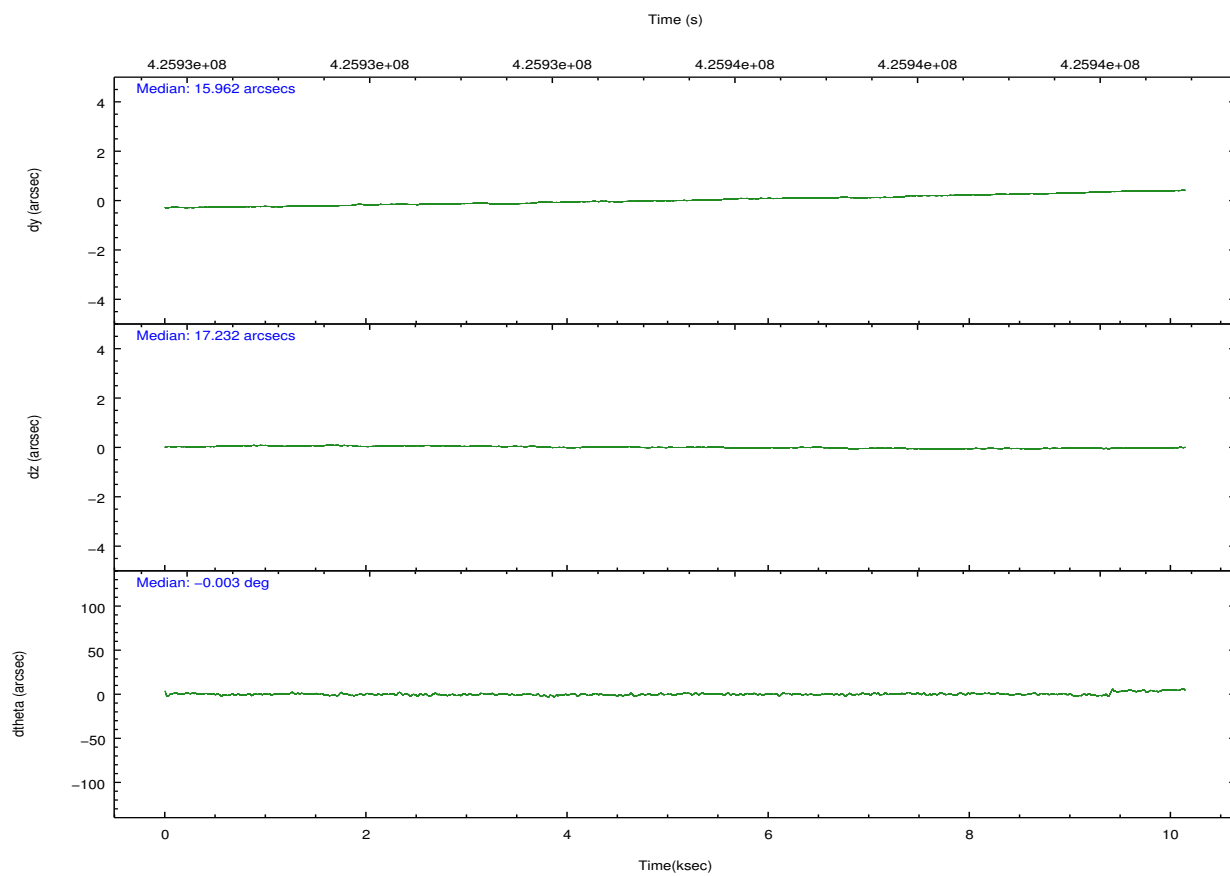
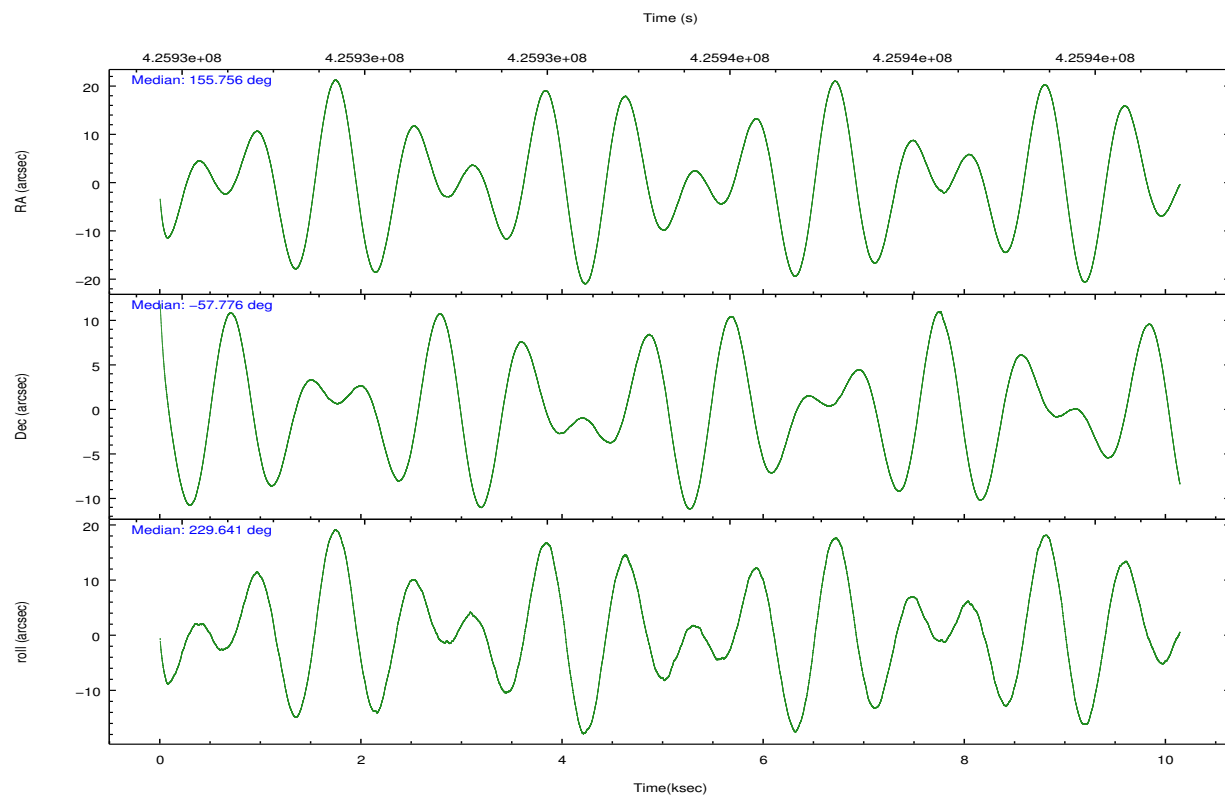
	ccd 0	ccd 1	ccd 2	ccd 3	ccd 6	ccd 7		ccd 0	ccd 1	ccd 2	ccd 3	ccd 6	ccd 7
level 1 events	51048	52883	58904	59031	60034	63262	grade 0 events	2627	2587	2615	5116	2713	3068
rejected events	44274	45942	52349	49357	53038	32652		5%	4%	4%	8%	4%	4%
rejected %	86%	86%	88%	83%	88%	51%	grade 1 events	26	29	39	48	29	87
								0%	0%	0%	0%	0%	0%
							grade 2 events	1637	1543	1491	1724	1539	6568
								3%	2%	2%	2%	2%	10%
							grade 3 events	684	717	656	752	704	2896
								1%	1%	1%	1%	1%	4%
							grade 4 events	659	726	629	781	643	2735
								1%	1%	1%	1%	1%	4%
							grade 5 events	2012	2256	1943	2432	2401	6925
								3%	4%	3%	4%	3%	10%
							grade 6 events	1172	1369	1169	1306	1400	15362
								2%	2%	1%	2%	2%	24%
							grade 7 events	42231	43656	50362	46872	50605	25621
								82%	82%	85%	79%	84%	40%

2.2 Compared Parameters

Parameter	Planned	Actual	Parameter	Planned	Actual
Instrument	ACIS	ACIS	Obspar format version number	7	7
Detector	ACIS-012367	ACIS-012367	Obspar file type	PREDICTED	ACTUAL
Grating	NONE	NONE	Obspar update status	NONE	UPDATED
Data mode	FAINT	FAINT	CCD I0 on	Y	Y
Observation mode	POINTING	POINTING	CCD I1 on	Y	Y
[deg] Pointing RA	155.765630	155.7565388220061	CCD I2 on	Y	Y
[deg] Pointing Dec	-57.748979	-57.7760457249824	CCD I3 on	Y	Y
[deg] Pointing Roll	229.444761	229.6457600754042	CCD S0 on	N	N
[mm] SIM focus pos	-0.782348	-0.7809083437167272	CCD S1 on	N	N
[mm] SIM defocus	0	0.001439871863259334	CCD S2 on	O2	Y
[mm] SIM translation stage pos	-233.592463	-233.5874344608287	CCD S3 on	O1	Y
[mm] SIM translation stage offset	0	-0.005018542100998502	CCD S4 on	N	N
[s] Observation start time (MET)	425930417.184000	425929019.01177	CCD S5 on	N	N
Observation start date	2011-07-01T17:59:11	2011-07-01T17:36:59	Number of optional ACIS chips dropped	0	0
[s] Observation end time (MET)	425940417.184000	425941188.32491	On-chip summing requested	N	N
Observation end date	2011-07-01T20:45:51	2011-07-01T20:59:48	Subarray requested	NONE	NONE
Read mode	TIMED	TIMED	Alternating exposures requested	N	N
			[s] Primary exposure time	0.000000	3.2

2.3 Aspect



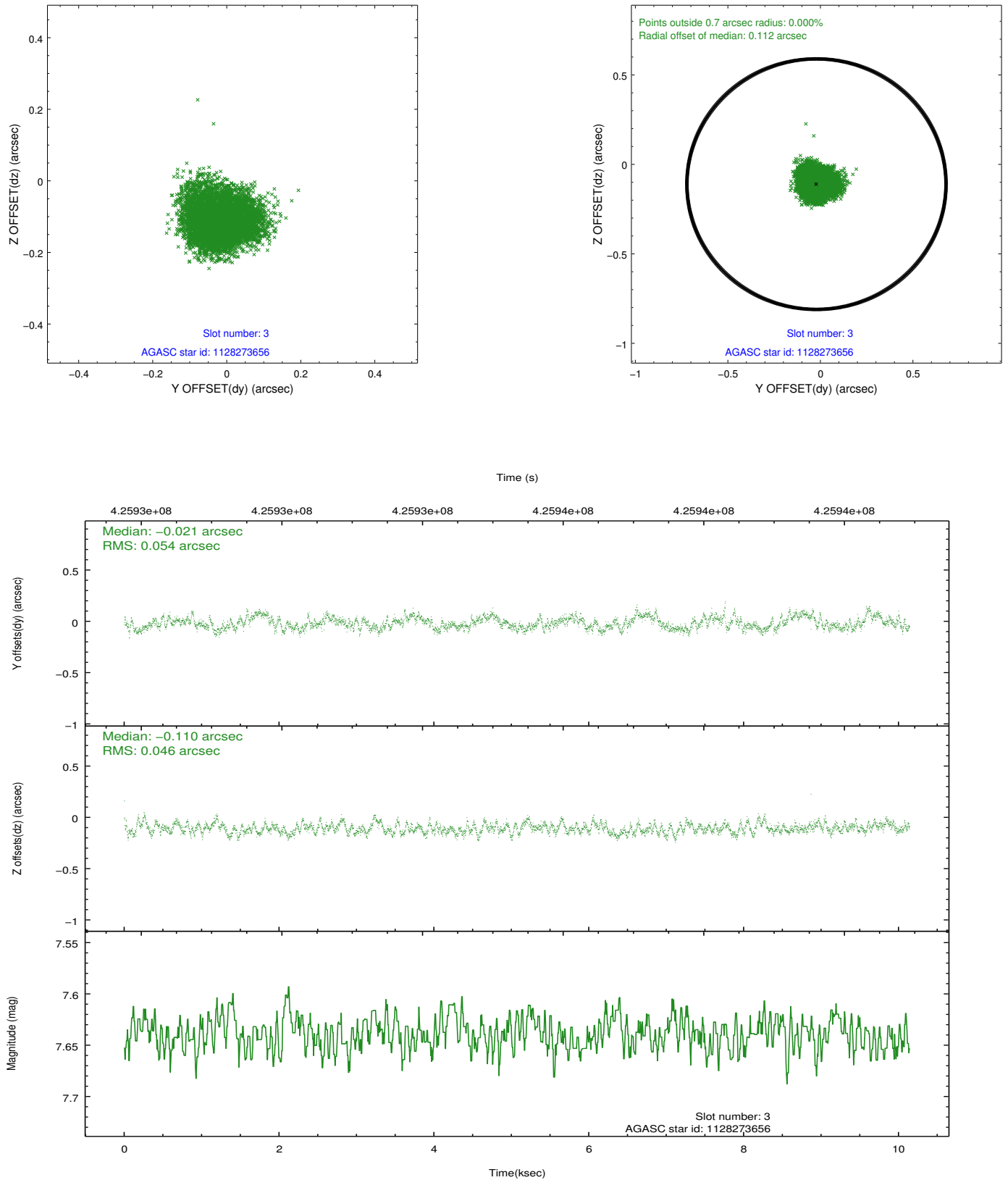


Slot Statistics

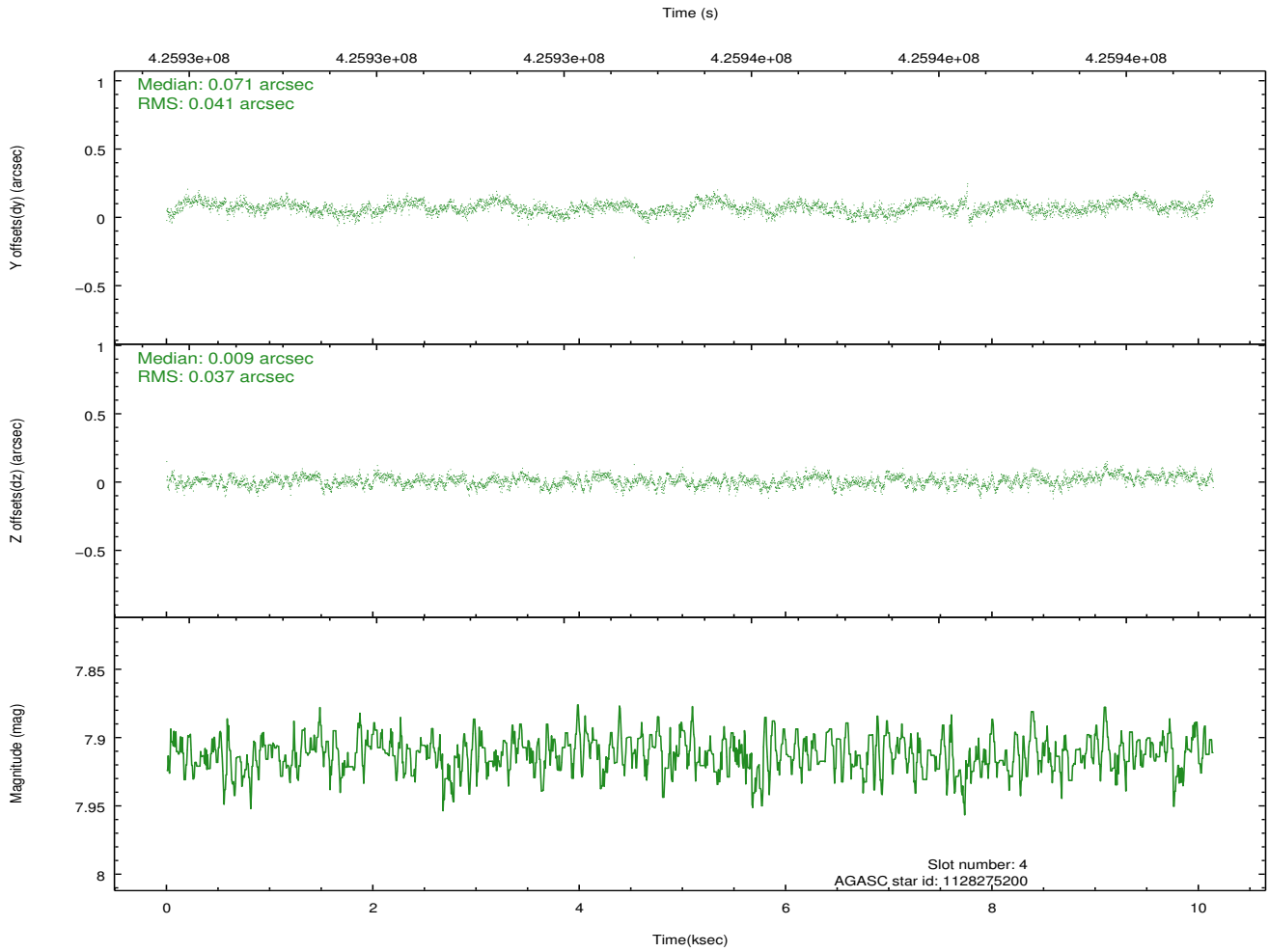
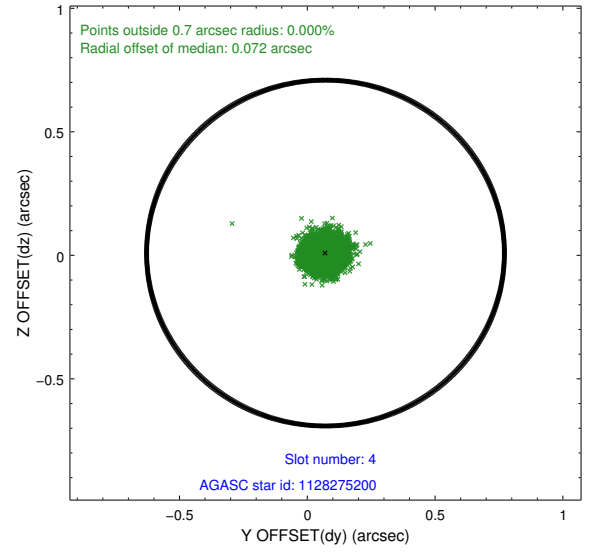
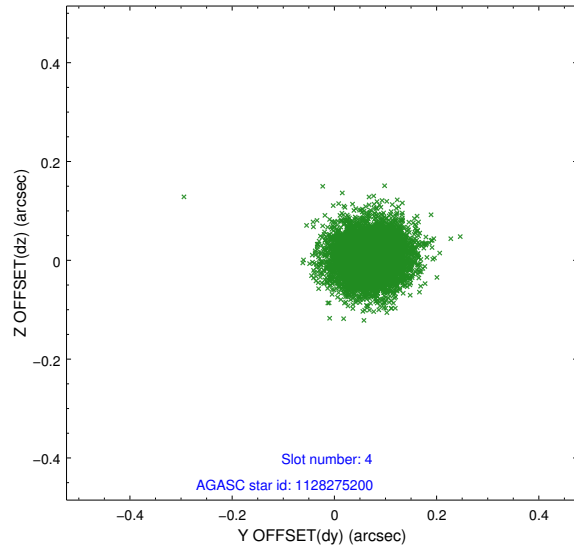
slot	status	id	mag	n_pts	med_dy	med_dz	dr1	dr2	ra	dec	mean_y	mean_z
0	FID	ACIS-I-2	6.93	2474	-0.185	-0.077	0.009	0.033	0.000000	0.000000	-770.90	-847.35
1	FID	ACIS-I-4	6.95	2473	0.084	0.133	0.010	0.044	0.000000	0.000000	2143.16	1058.81
2	FID	ACIS-I-6	7.04	2474	0.001	0.007	0.014	0.053	0.000000	0.000000	389.99	1701.44
3	GUIDE	1128273656	7.64	4948	-0.021	-0.110	0.078	0.118	154.969776	-57.507105	346.13	-1729.47
4	GUIDE	1128275200	7.91	4948	0.071	0.009	0.060	0.093	155.999863	-57.081962	-2121.53	-1212.88
5	GUIDE	1128797296	7.91	4945	-0.084	0.013	0.059	0.097	156.158027	-58.285969	986.99	1822.62
6	GUIDE	1128407216	8.21	4948	-0.051	0.071	0.063	0.107	157.296841	-57.613401	-2265.09	1948.04
7	GUIDE	1128799512	8.80	4946	0.081	0.013	0.068	0.110	155.671485	-58.498558	2165.14	1620.57

2.4 Star Slots

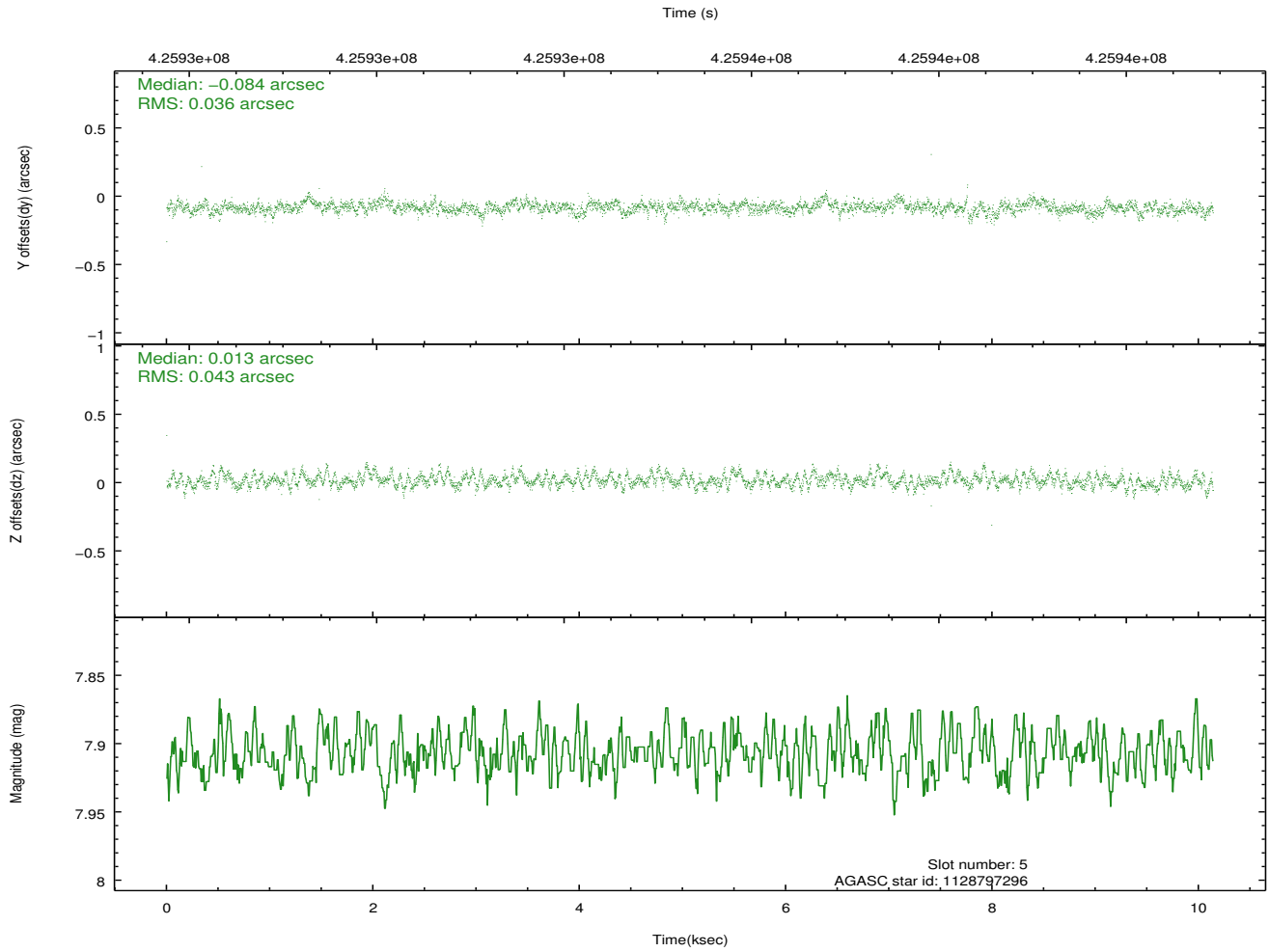
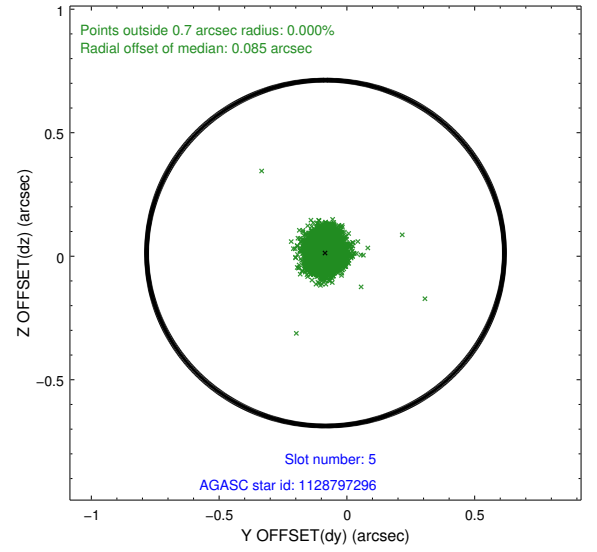
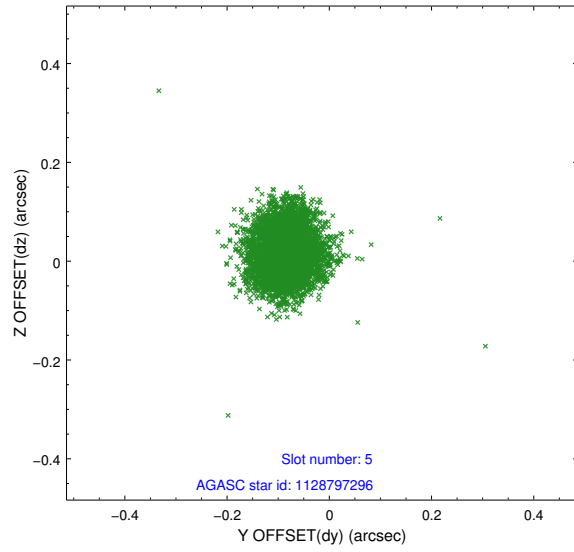
2.4.1 Slot 3



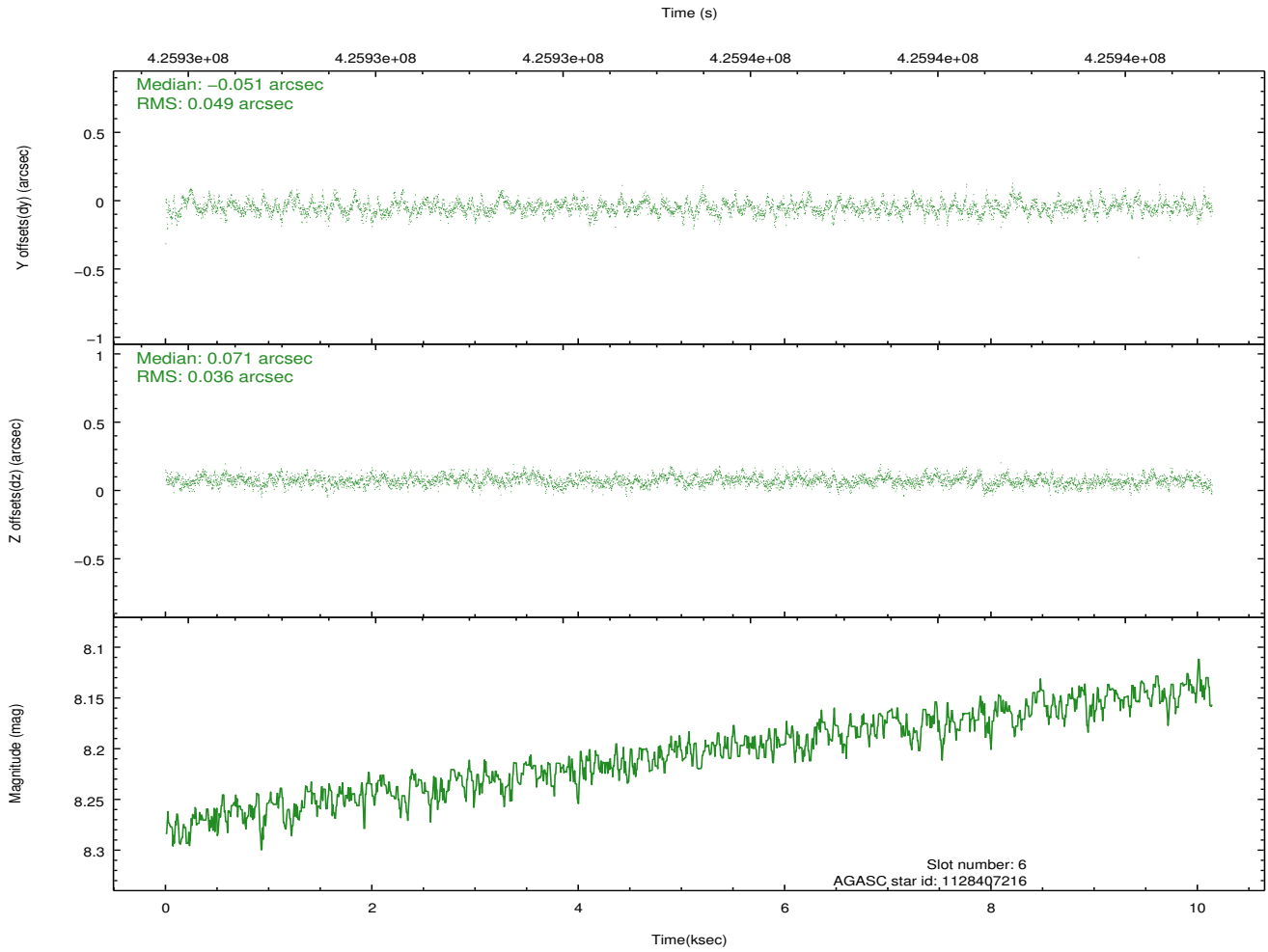
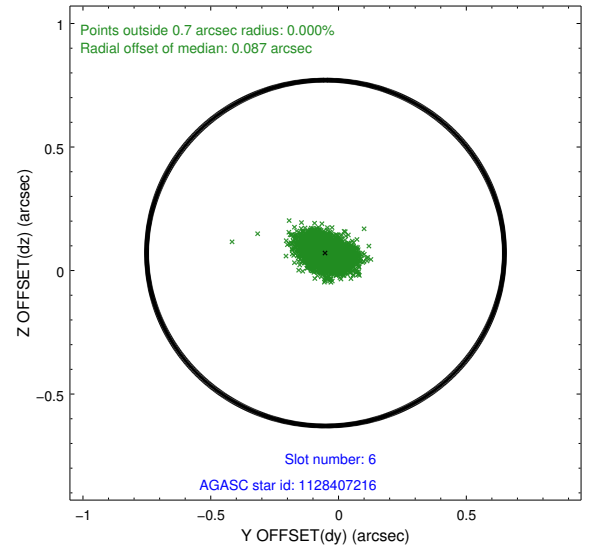
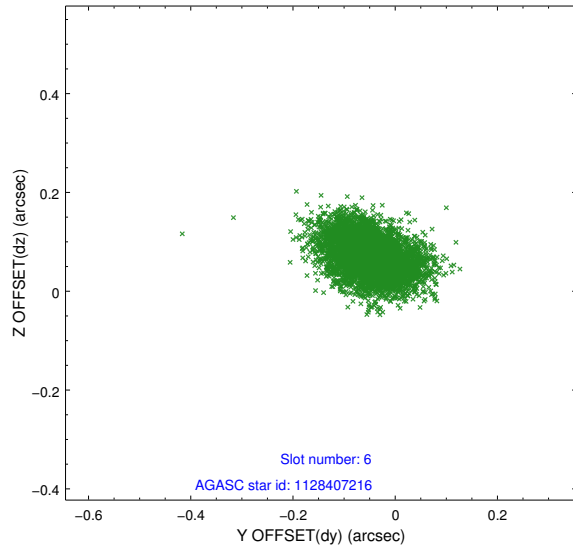
2.4.2 Slot 4



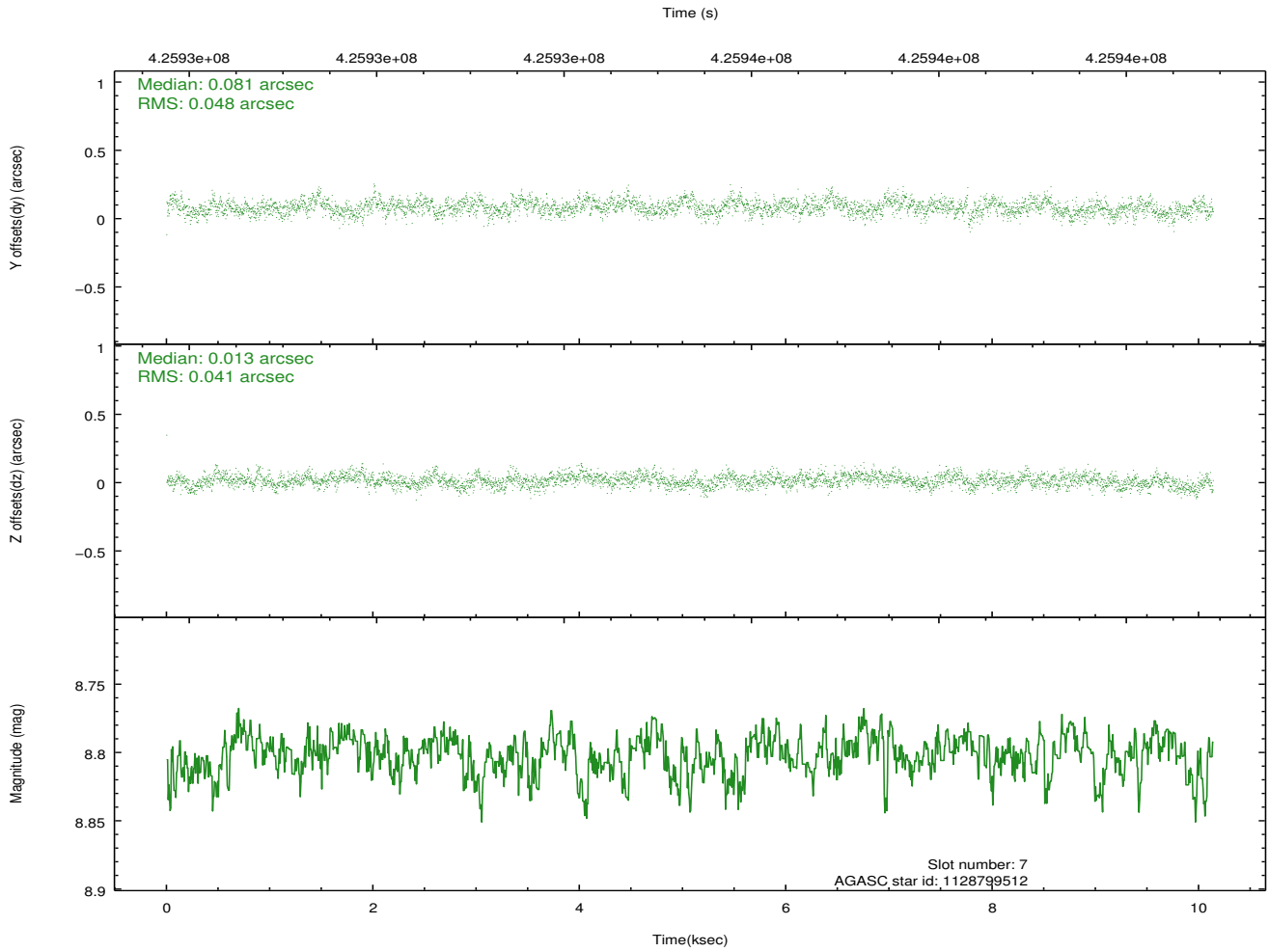
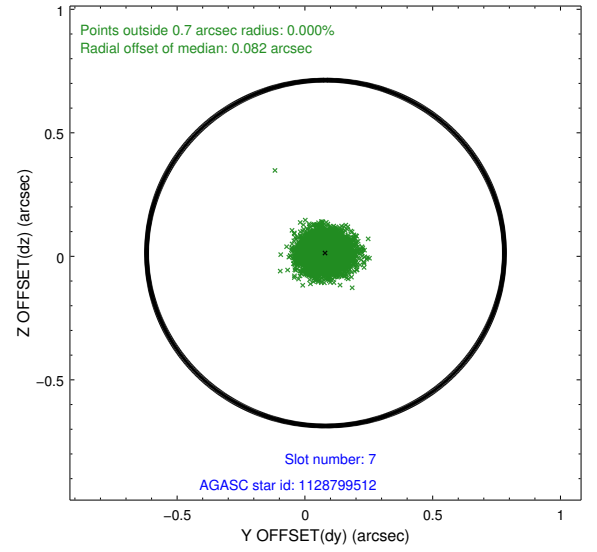
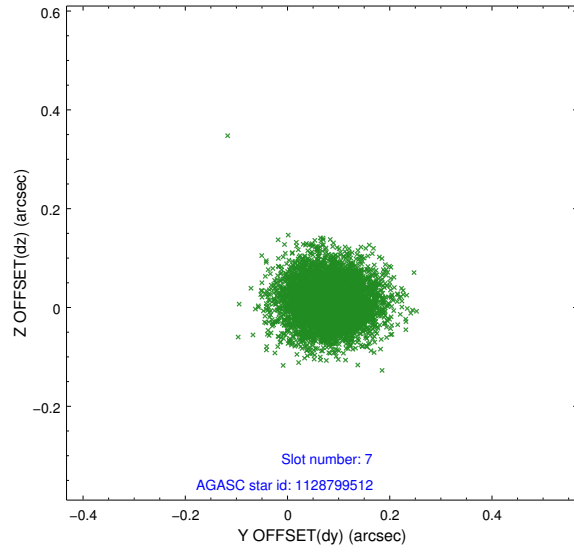
2.4.3 Slot 5



2.4.4 Slot 6

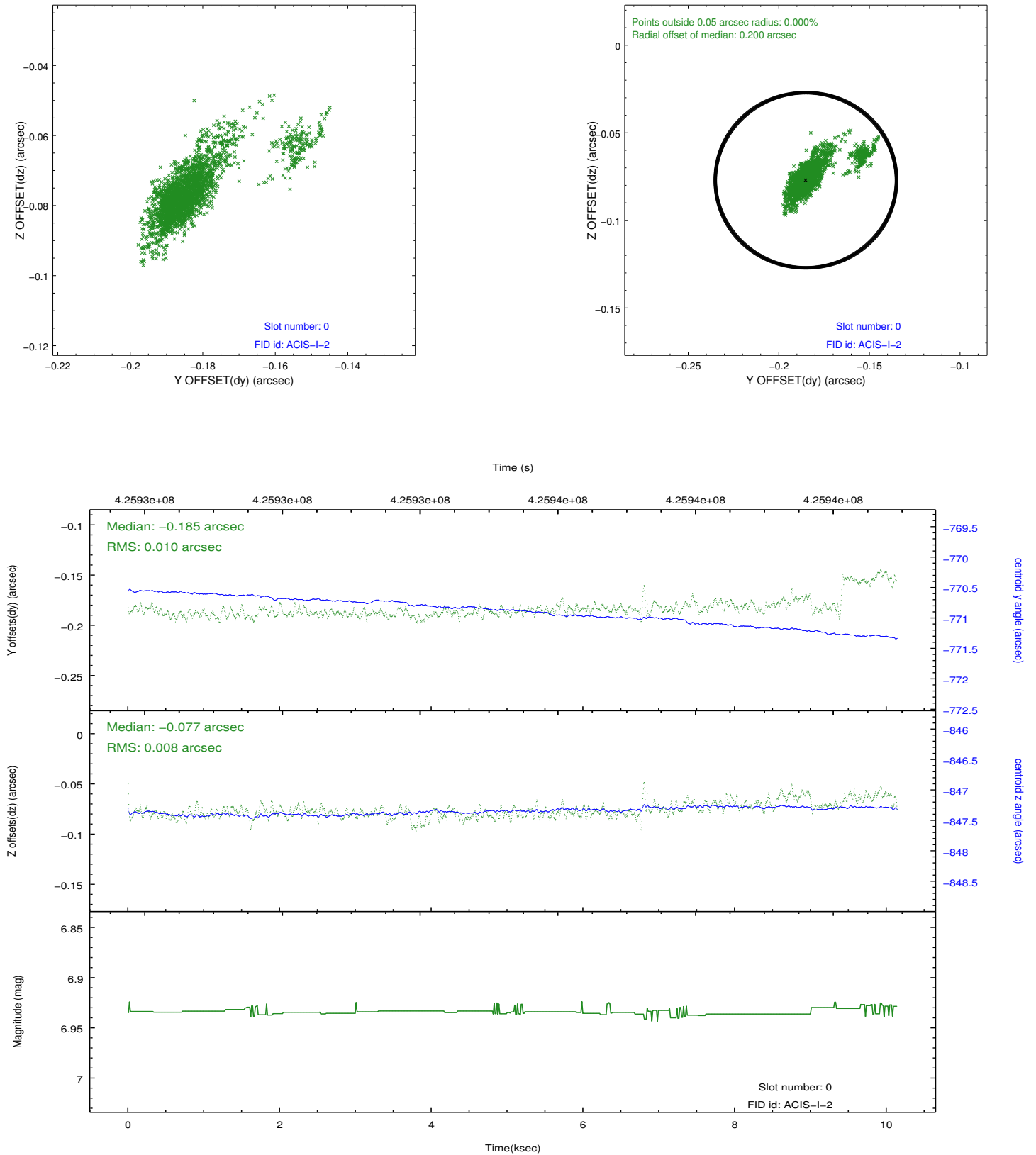


2.4.5 Slot 7

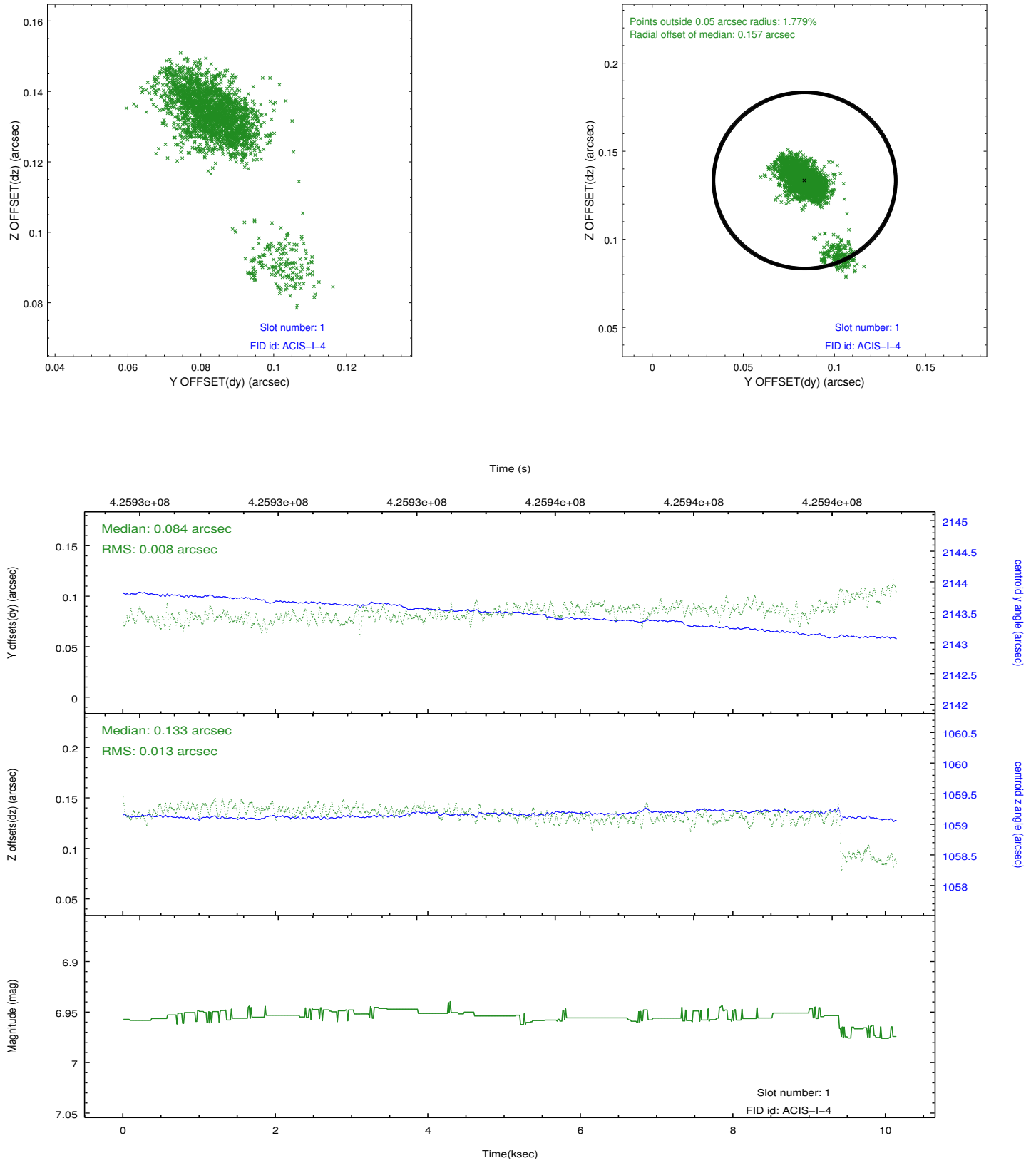


2.5 FID Slots

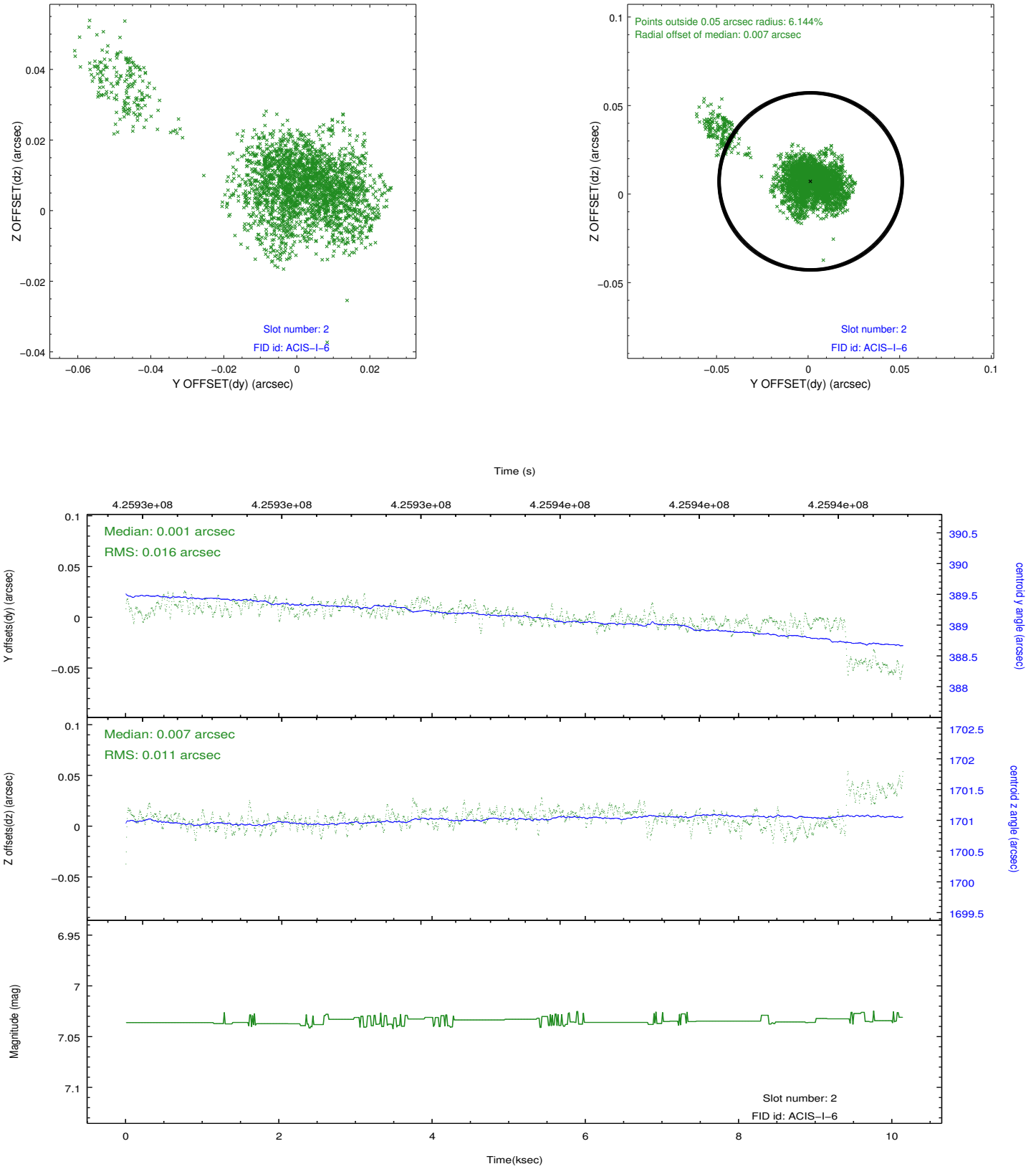
2.5.1 Slot 0



2.5.2 Slot 1



2.5.3 Slot 2



A Summary

A.1 Status

V&V Scientist	Jen Lauer
V&V Date (YYYY-MM-DD)	2012.03.20
V&V Edition	1
V&V Disposition and Status	OK
V&V Charge Time	10.057205727577

A.2 Comments