

# V&V Reference Report

## L2 ASCDS Version : 8.4.5

Observation 12419 - L2 Version 2  
Chandra X-Ray Center

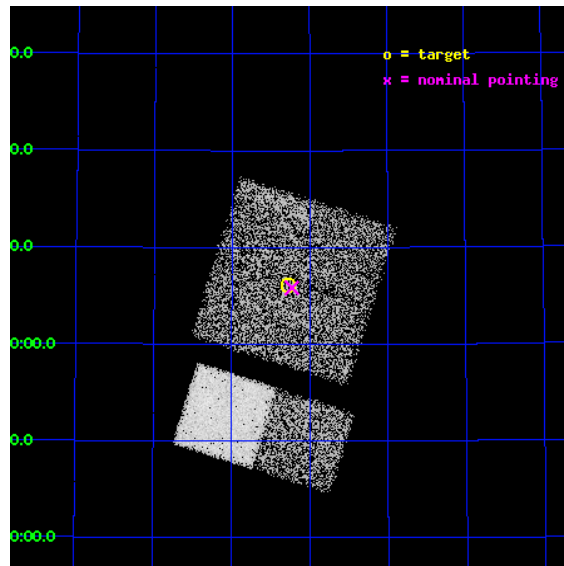
L2 Processing Date : Jul 7 2012

## Contents

<b>1</b>	<b>Front</b>	<b>2</b>
<b>2</b>	<b>OBI</b>	<b>3</b>
2.1	OBI . . . . .	3
2.1.1	Images . . . . .	3
2.1.2	Bias . . . . .	3
2.1.3	Parameters . . . . .	4
2.1.4	Events . . . . .	4
2.2	Compared Parameters . . . . .	5
2.3	Aspect . . . . .	6
2.4	Star Slots . . . . .	9
2.4.1	Slot 3 . . . . .	9
2.4.2	Slot 4 . . . . .	10
2.4.3	Slot 5 . . . . .	11
2.4.4	Slot 6 . . . . .	12
2.4.5	Slot 7 . . . . .	13
2.5	FID Slots . . . . .	14
2.5.1	Slot 0 . . . . .	14
2.5.2	Slot 1 . . . . .	15
2.5.3	Slot 2 . . . . .	16
<b>A</b>	<b>Summary</b>	<b>17</b>
A.1	Status . . . . .	17
A.2	Comments . . . . .	17

# 1 Front

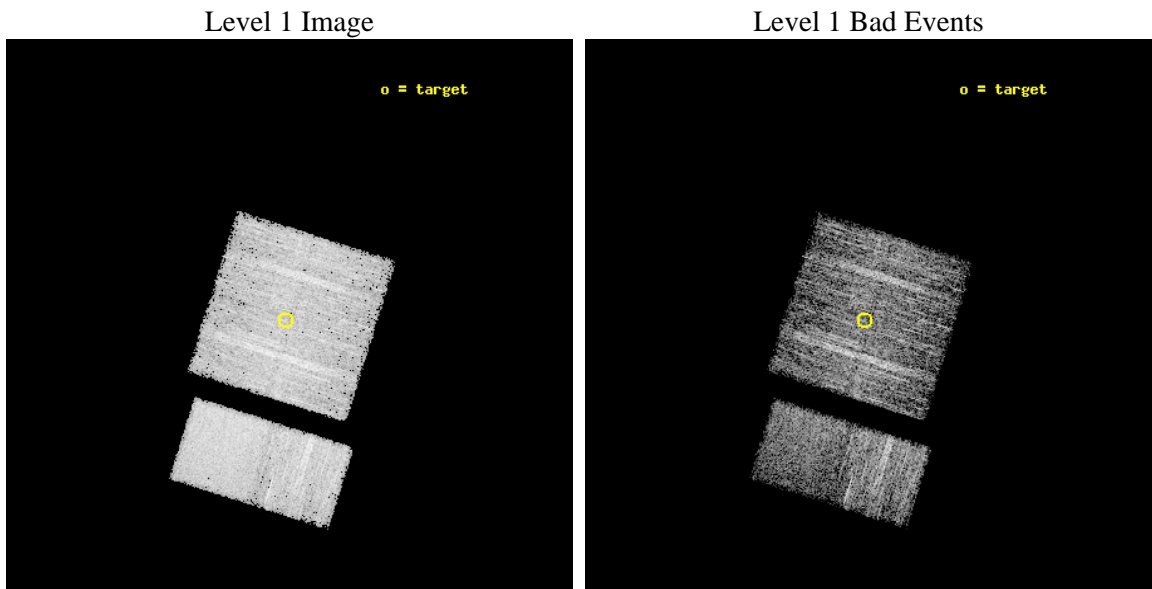
seq_num	401160	Sequence number
obs_id	12419	Observation id
title	The Nature of INTEGRAL Sources in the Galactic Plane	Proposal titl
observer	Dr. John Tomsick	Principal investigator
object	IGR J03103+5706	Source name
dtcycle	0	&#160
cycle	P	events from which exps? Prim/Second/Both
ra_targ	47.57	Observer's specified target RA [deg]
dec_targ	57.102	Observer's specified target Dec [deg]
ra_nom	47.557249641833	Nominal RA [deg]
dec_nom	57.097250111975	Nominal Dec [deg]
roll_nom	197.4719377641	Nominal Roll [deg]
revision	2	Processing version of data
ontime	4776.8540876508	Sum of GTIs [s]
livetime	4716.3666849167	Livetime [s]
ontime0	4776.7309676409	Sum of GTIs [s]
ontime1	4776.7720076442	Sum of GTIs [s]
ontime2	4776.8130476475	Sum of GTIs [s]
ontime3	4776.8540876508	Sum of GTIs [s]
ontime6	4776.9361676574	Sum of GTIs [s]
ontime7	4776.8951276541	Sum of GTIs [s]
l2events	34270	Number of level 2 events



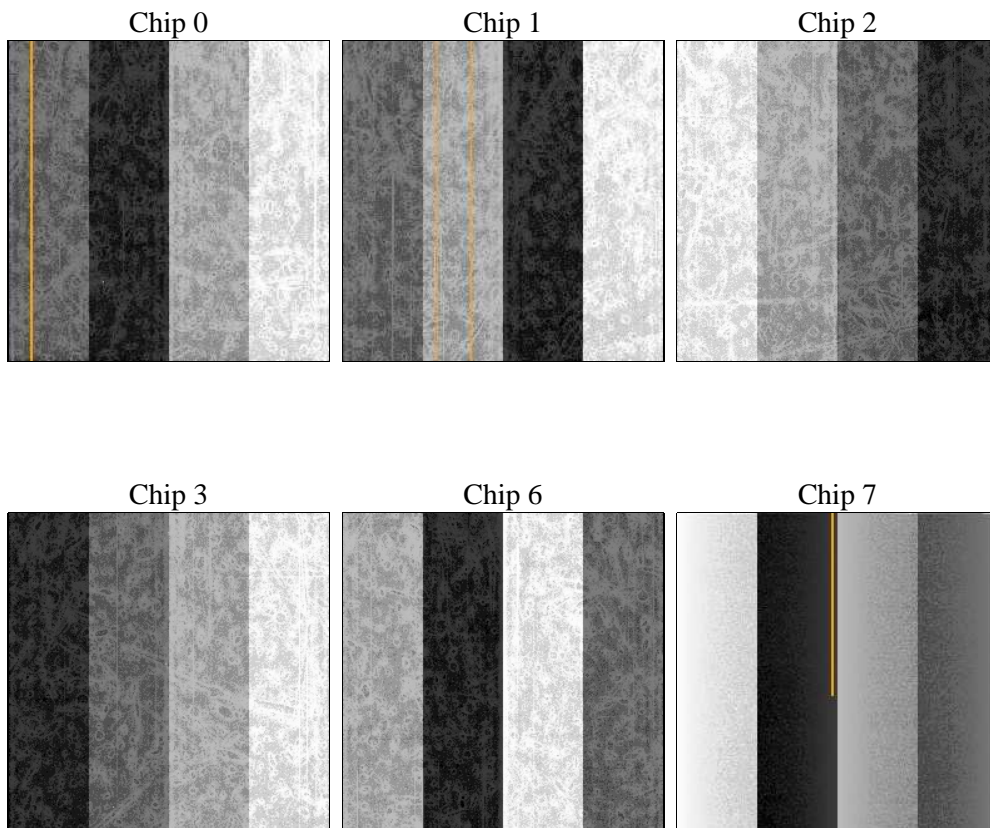
## 2 OBI

### 2.1 OBI

#### 2.1.1 Images



#### 2.1.2 Bias



### 2.1.3 Parameters

obi_num	0	Obi number	sched_exp_time	4723.121000	[s] Scheduled observation exposure time
ascdsver	8.4.5	Processing system revision	ontime	4776.8540876508	Sum of GTIs [s]
caldsver	4.5.0	&#160	ontime0	4776.7309676409	Sum of GTIs [s]
date	2012-07-07T03:45:54	Date and time of file creation	ontime1	4776.7720076442	Sum of GTIs [s]
revision	2	Processing version of data	ontime2	4776.8130476475	Sum of GTIs [s]
			ontime3	4776.8540876508	Sum of GTIs [s]
			ontime6	4776.9361676574	Sum of GTIs [s]
			ontime7	4776.8951276541	Sum of GTIs [s]
			l1events	204176	Number of level 1 events

### 2.1.4 Events

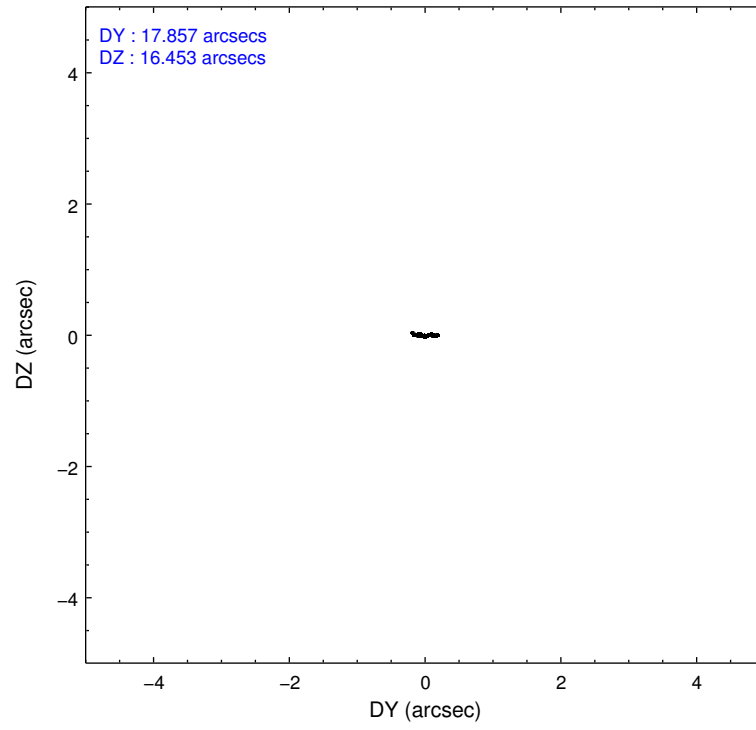
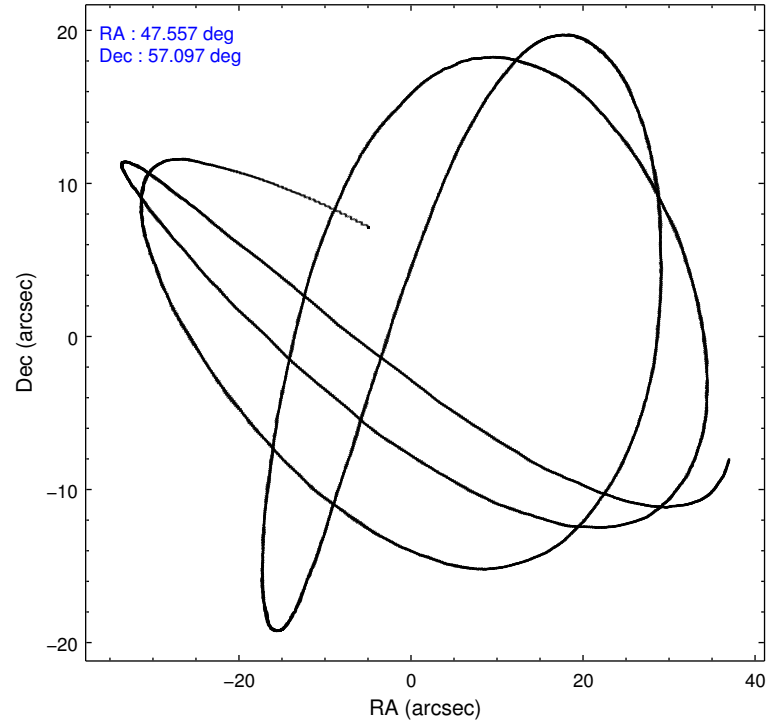
	ccd 0	ccd 1	ccd 2	ccd 3	ccd 6	ccd 7		ccd 0	ccd 1	ccd 2	ccd 3	ccd 6	ccd 7
level 1 events	30429	31555	33109	31570	35883	41630	grade 0 events	1299	1506	1398	1212	1383	1691
rejected events	26803	27380	29336	28148	31947	22868		4%	4%	4%	3%	3%	4%
rejected %	88%	86%	88%	89%	89%	54%	grade 1 events	22	22	18	18	17	44
								0%	0%	0%	0%	0%	0%
							grade 2 events	913	1000	906	740	909	3782
								3%	3%	2%	2%	2%	9%
							grade 3 events	363	441	386	388	403	1632
								1%	1%	1%	1%	1%	3%
							grade 4 events	376	397	363	366	412	1644
								1%	1%	1%	1%	1%	3%
							grade 5 events	1397	1480	1328	1533	1600	4330
								4%	4%	4%	4%	4%	10%
							grade 6 events	677	836	723	719	834	10025
								2%	2%	2%	2%	2%	24%
							grade 7 events	25382	25873	27987	26594	30325	18482
								83%	81%	84%	84%	84%	44%

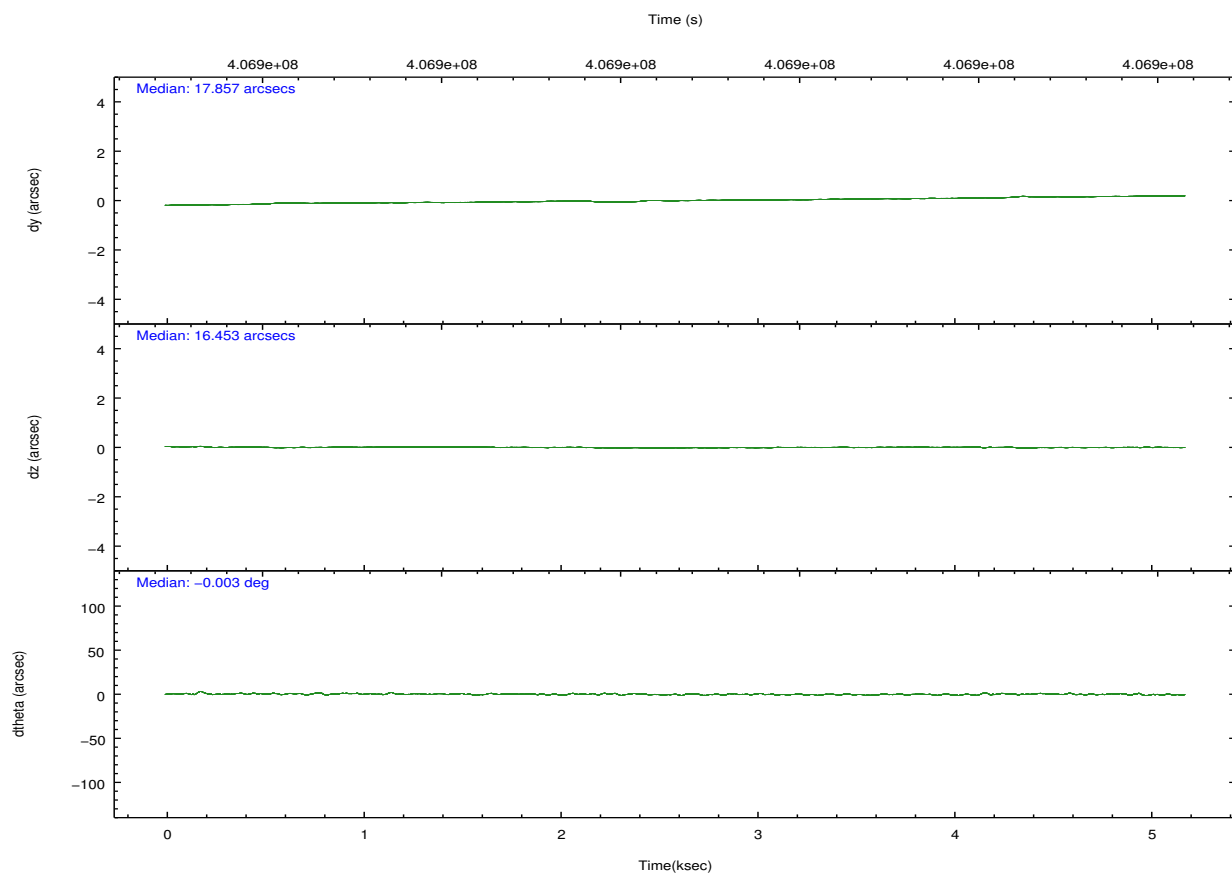
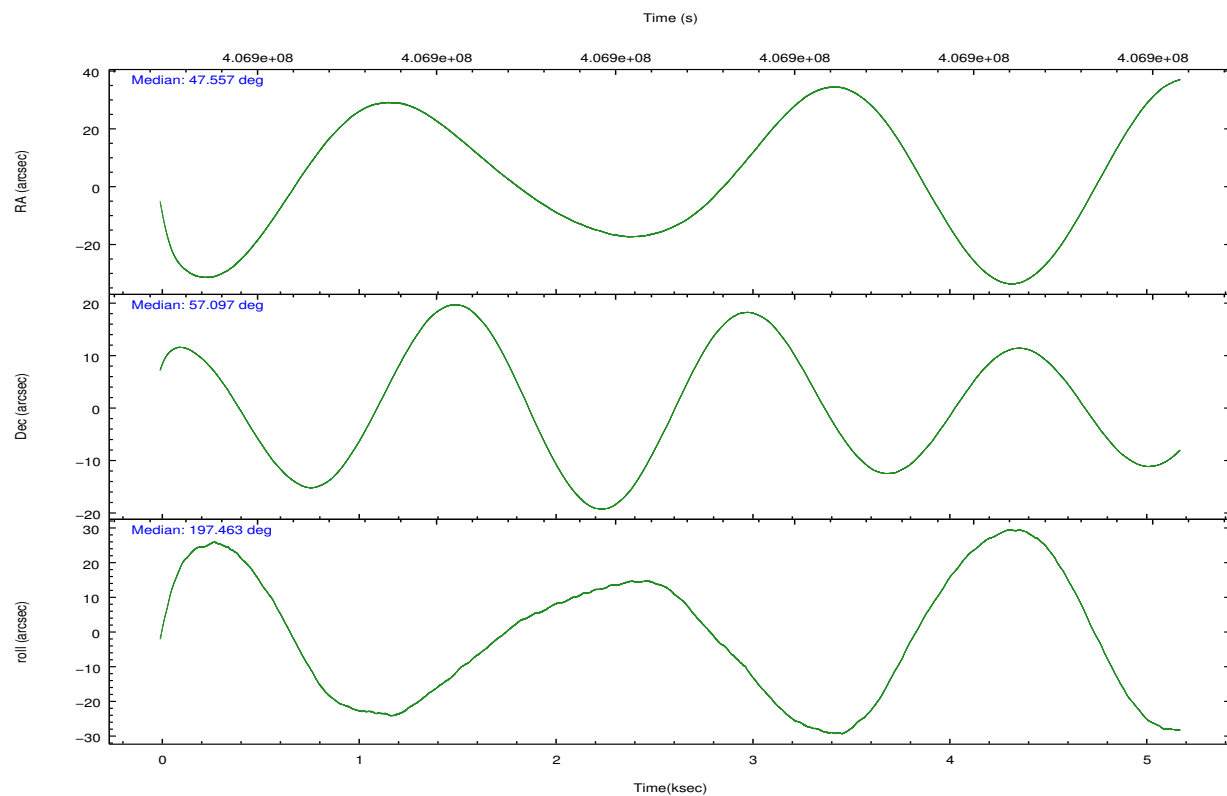


## 2.2 Compared Parameters

Parameter	Planned	Actual	Parameter	Planned	Actual
Instrument	ACIS	ACIS	Obspar format version number	7	7
Detector	ACIS-012367	ACIS-012367	Obspar file type	PREDICTED	ACTUAL
Grating	NONE	NONE	Obspar update status	NONE	UPDATED
Data mode	FAINT	FAINT	CCD I0 on	Y	Y
Observation mode	POINTING	POINTING	CCD I1 on	Y	Y
[deg] Pointing RA	47.591863	47.55724964183309	CCD I2 on	Y	Y
[deg] Pointing Dec	57.117721	57.09725011197533	CCD I3 on	Y	Y
[deg] Pointing Roll	197.234192	197.4719377640959	CCD S0 on	N	N
[mm] SIM focus pos	-0.782348	-0.7809083437167272	CCD S1 on	N	N
[mm] SIM defocus	0	0.001439871863259334	CCD S2 on	O1	Y
[mm] SIM translation stage pos	-233.592463	-233.5874344608287	CCD S3 on	O2	Y
[mm] SIM translation stage offset	0	-0.005018542100998502	CCD S4 on	N	N
[s] Observation start time (MET)	406896158.184000	406895013.00068	CCD S5 on	N	N
Observation start date	2010-11-23T10:41:32	2010-11-23T10:23:33	Number of optional ACIS chips dropped	0	0
[s] Observation end time (MET)	406900881.184000	406901118.4135	On-chip summing requested	N	N
Observation end date	2010-11-23T12:00:15	2010-11-23T12:05:18	Subarray requested	NONE	NONE
Read mode	TIMED	TIMED	Alternating exposures requested	N	N
			[s] Primary exposure time	0.000000	3.2

## 2.3 Aspect



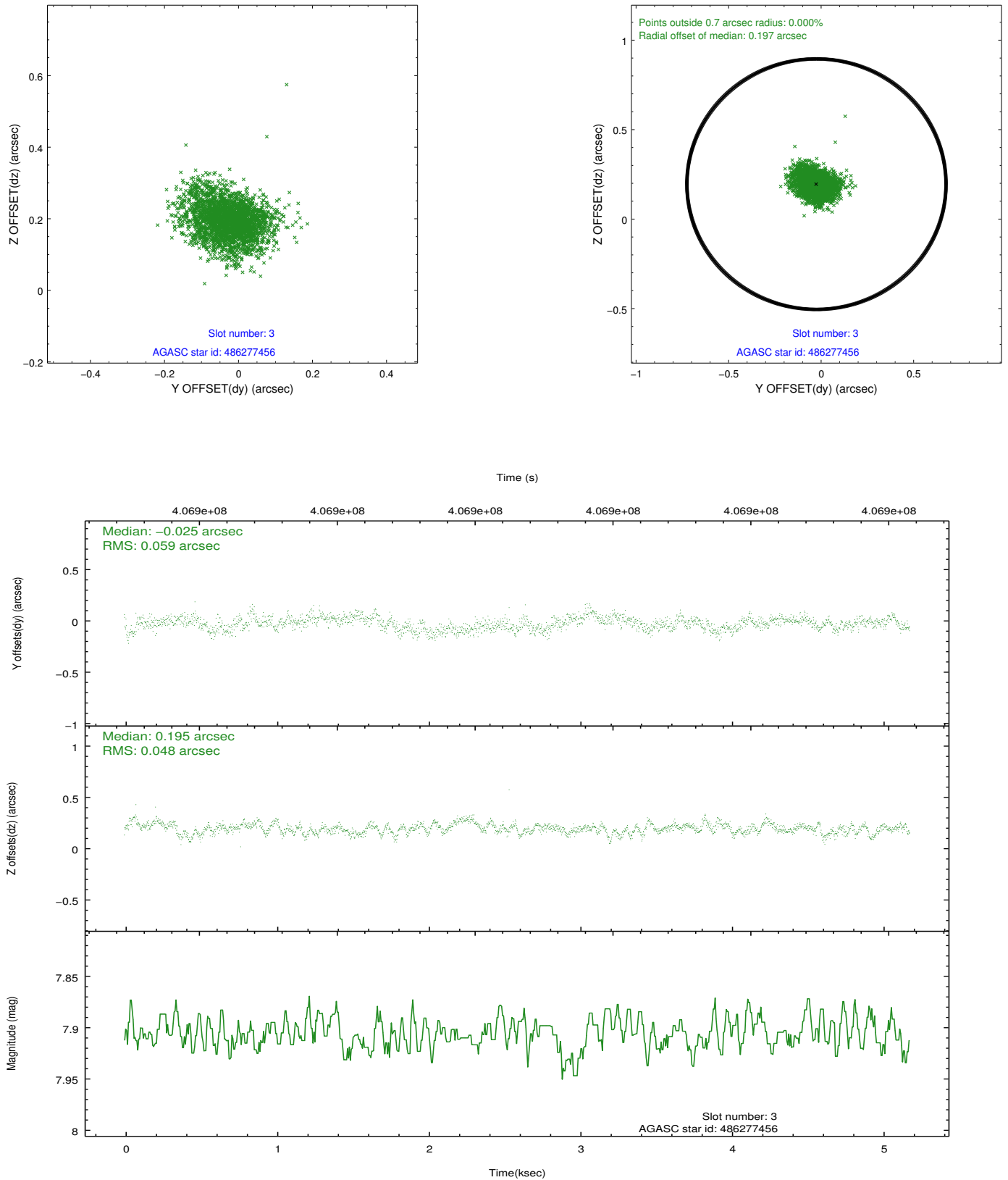


### Slot Statistics

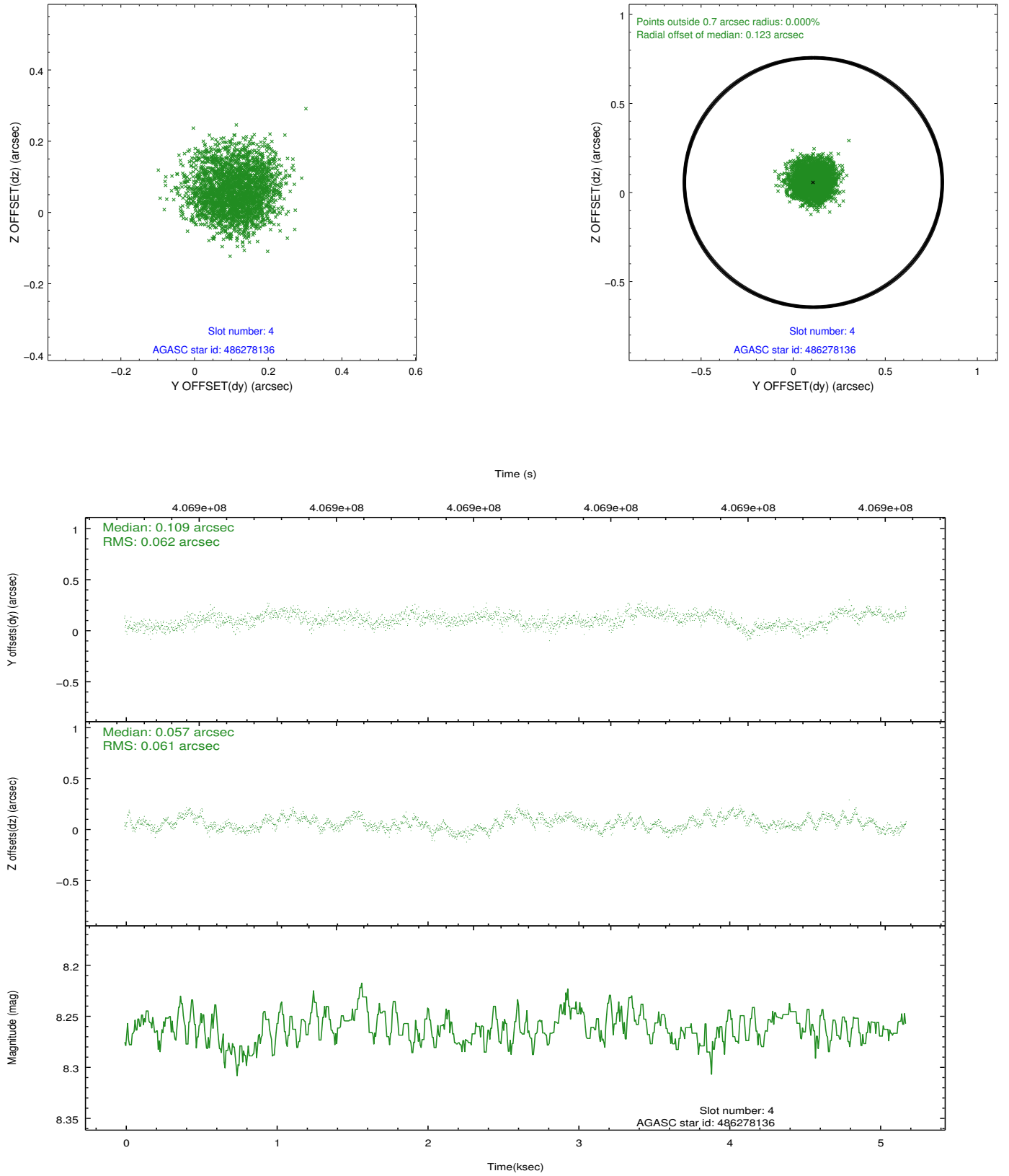
slot	status	id	mag	n_pts	med_dy	med_dz	dr1	dr2	ra	dec	mean_y	mean_z
0	FID	ACIS-I-1	7.02	1264	-0.018	-0.086	0.009	0.017	0.000000	0.000000	921.52	-840.16
1	FID	ACIS-I-4	6.95	1263	0.206	0.092	0.008	0.013	0.000000	0.000000	2142.40	1059.25
2	FID	ACIS-I-5	7.00	1264	-0.286	0.065	0.009	0.015	0.000000	0.000000	-1825.28	1058.35
3	GUIDE	486277456	7.91	2527	-0.025	0.195	0.080	0.132	46.673505	57.471083	1316.93	-1752.62
4	GUIDE	486278136	8.26	2527	0.109	0.057	0.095	0.144	47.902599	57.411008	-888.98	-831.64
5	GUIDE	486280408	8.90	2522	-0.047	-0.191	0.085	0.137	47.206511	56.494599	1393.97	1913.26
6	GUIDE	486281600	8.55	2524	-0.102	-0.128	0.103	0.182	47.626341	56.627725	457.71	1706.43
7	GUIDE	486281792	9.25	2518	0.082	0.055	0.105	0.174	48.802004	56.975408	-2123.37	1174.45

## 2.4 Star Slots

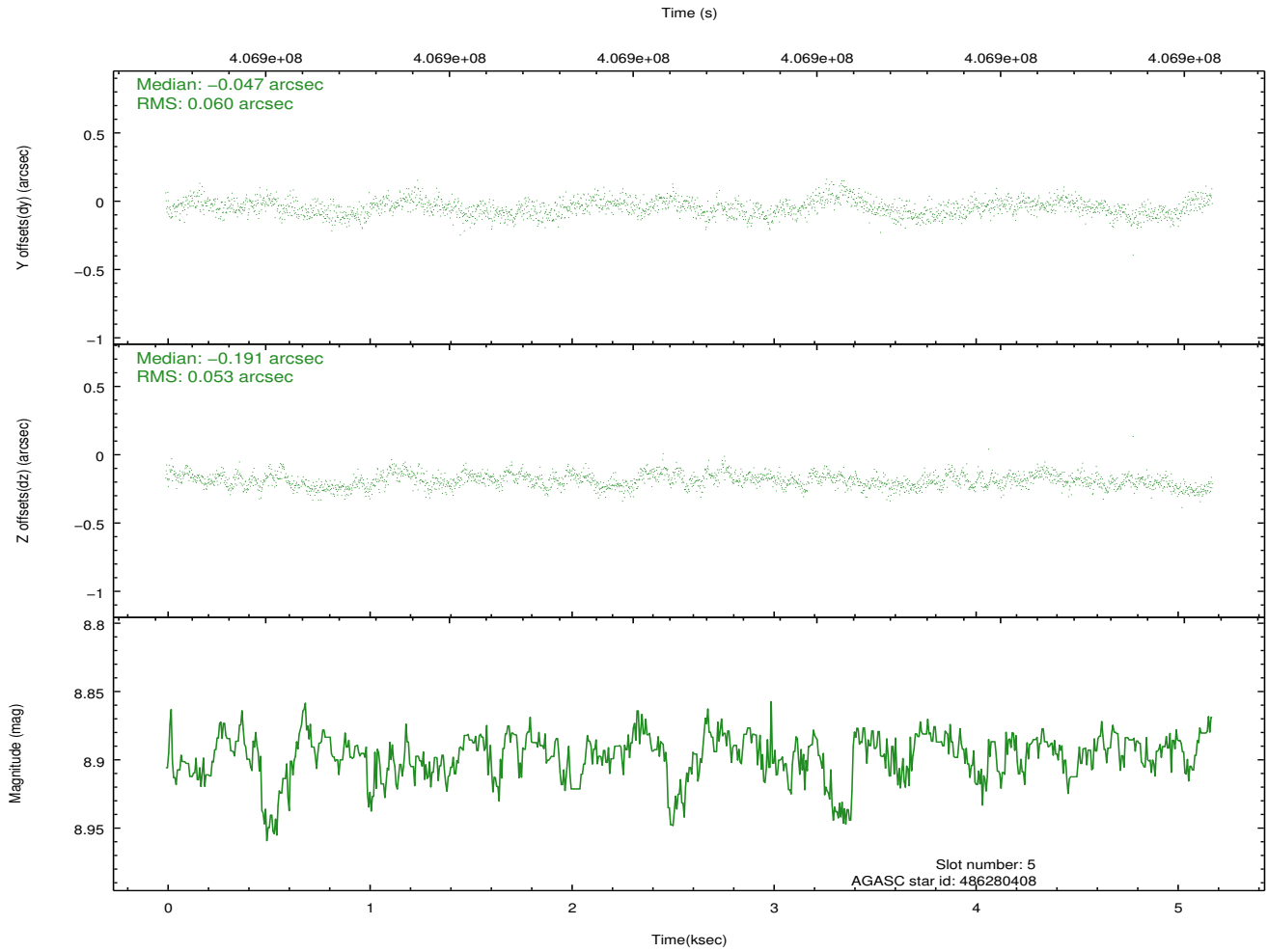
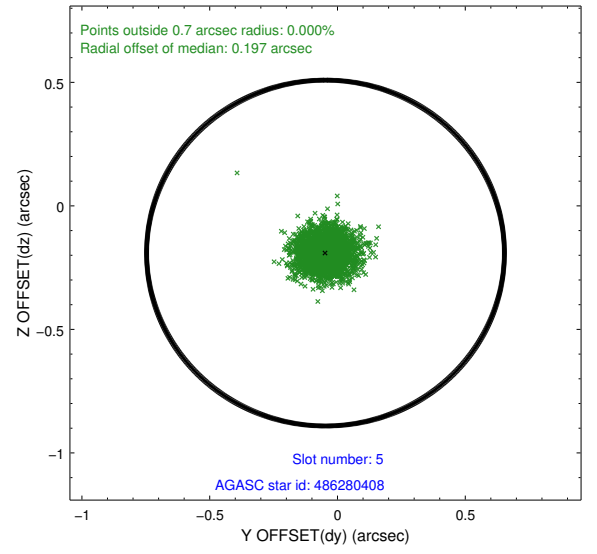
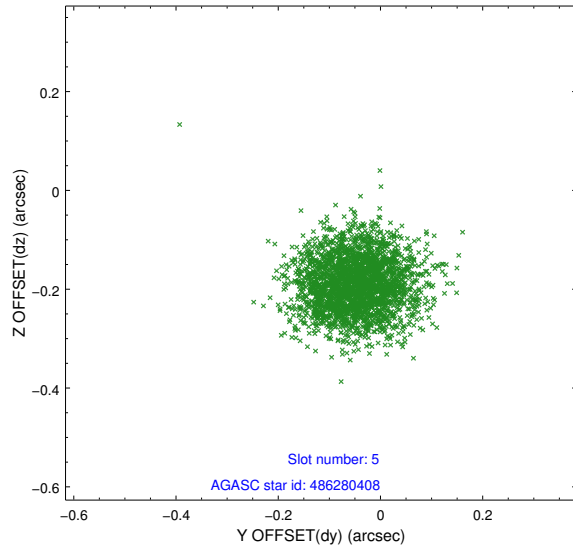
### 2.4.1 Slot 3



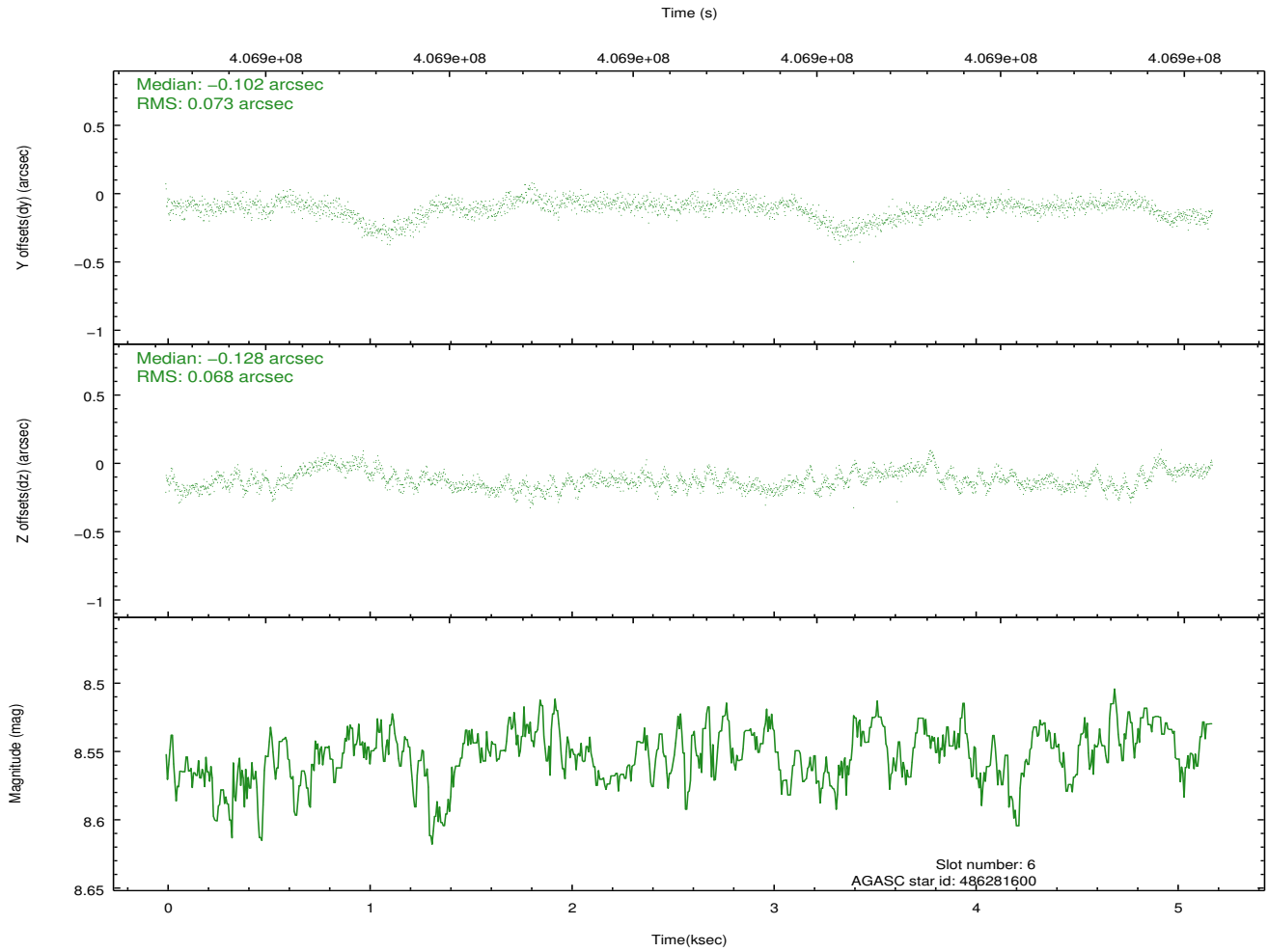
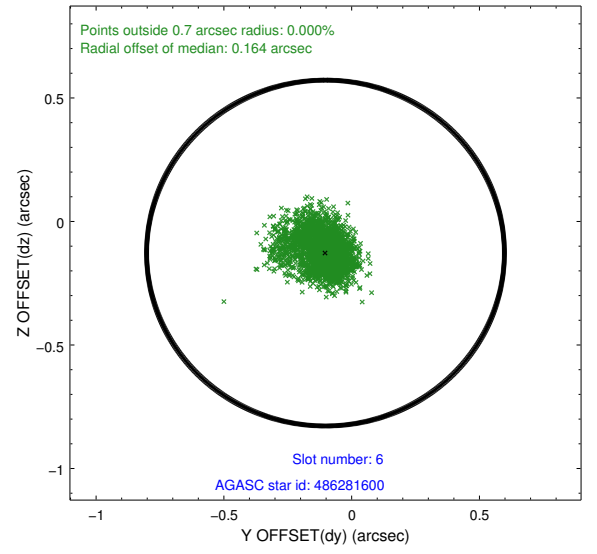
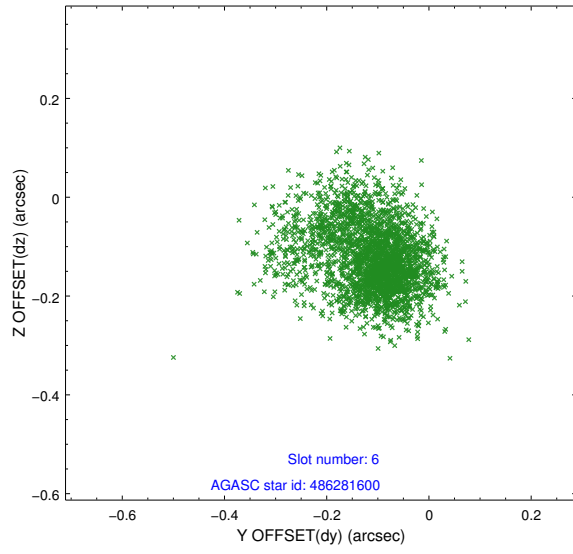
## 2.4.2 Slot 4



### 2.4.3 Slot 5

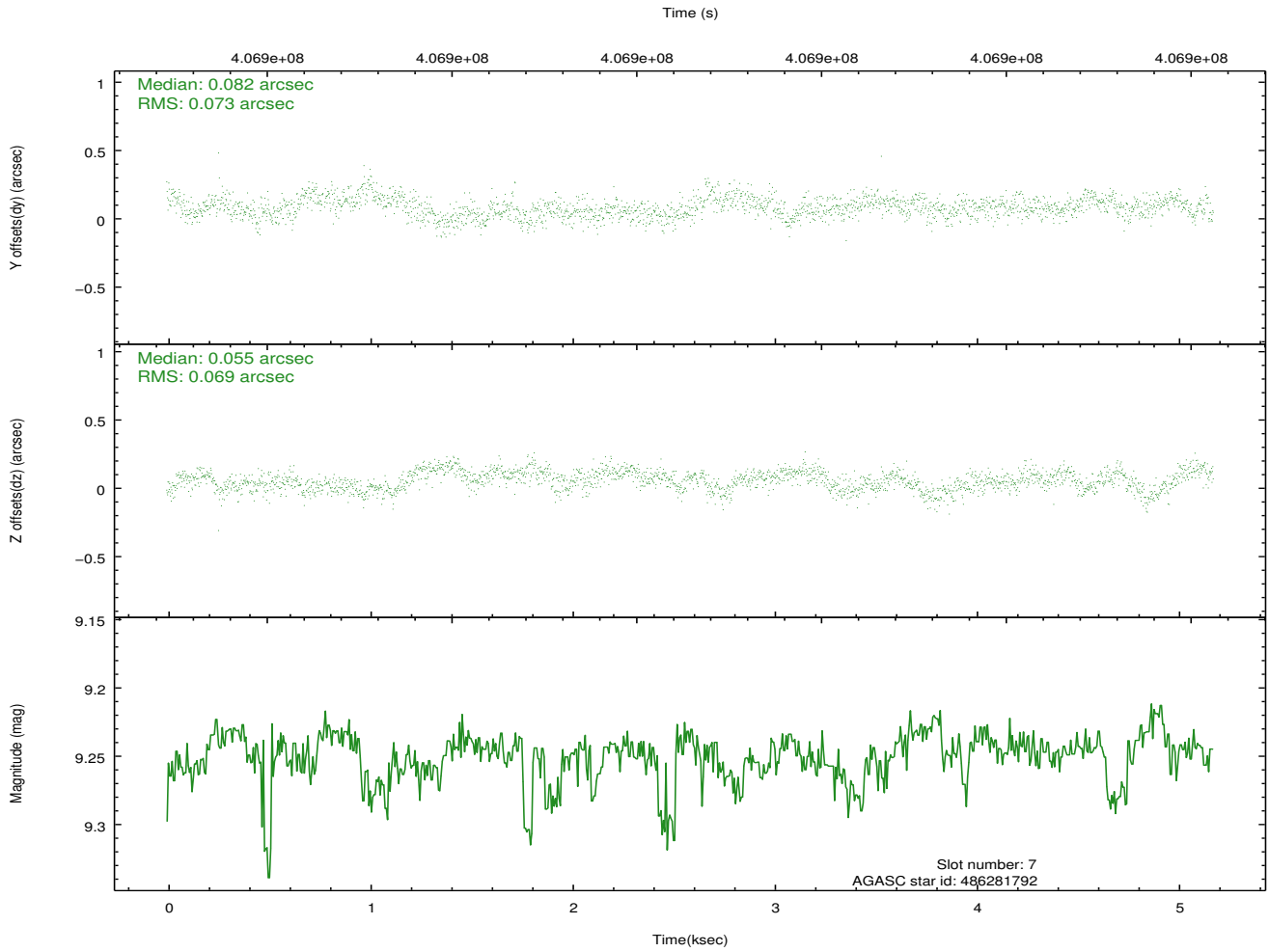
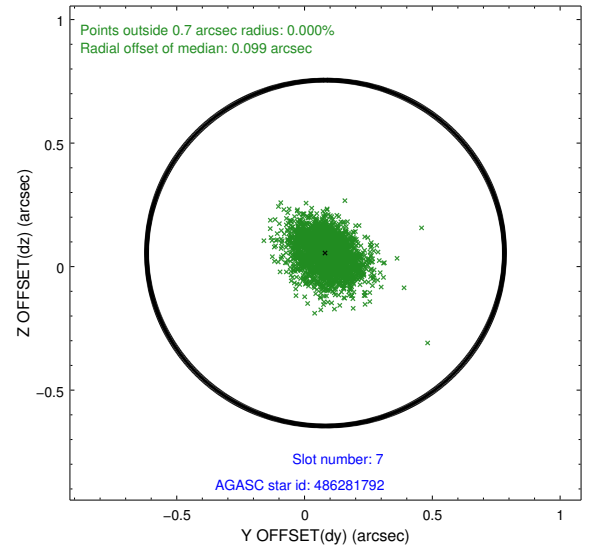
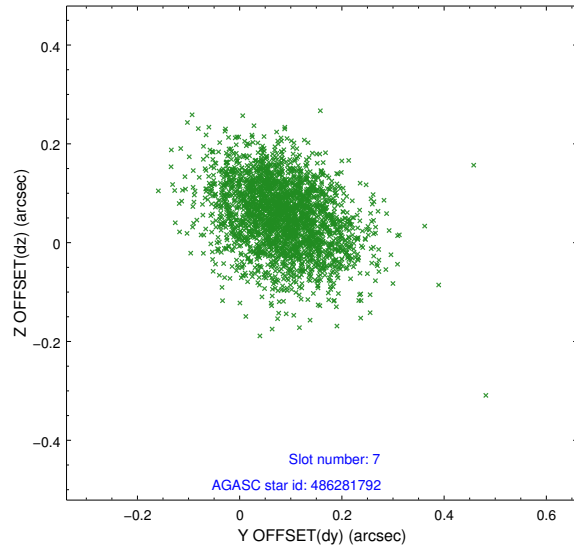


## 2.4.4 Slot 6



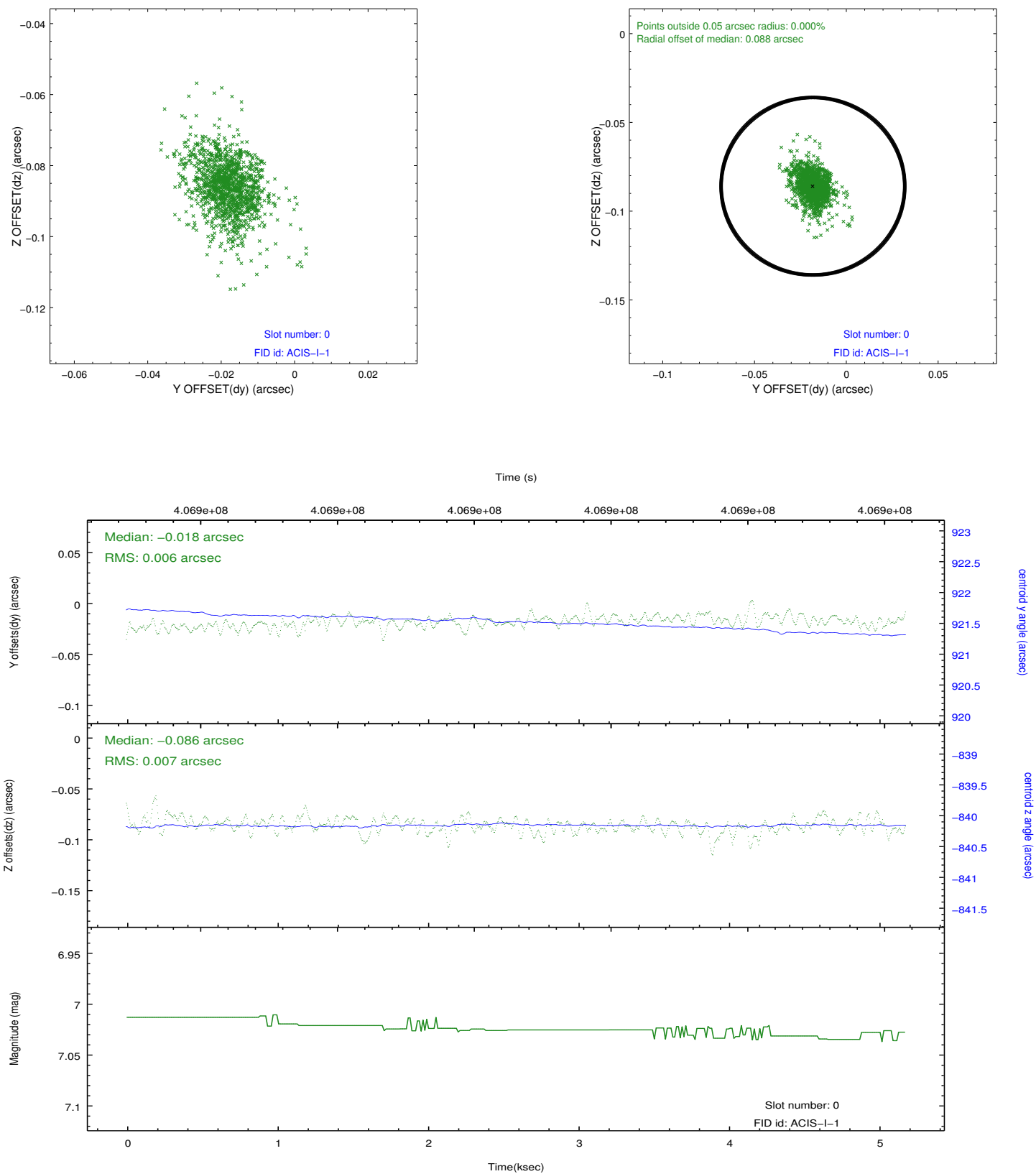


## 2.4.5 Slot 7

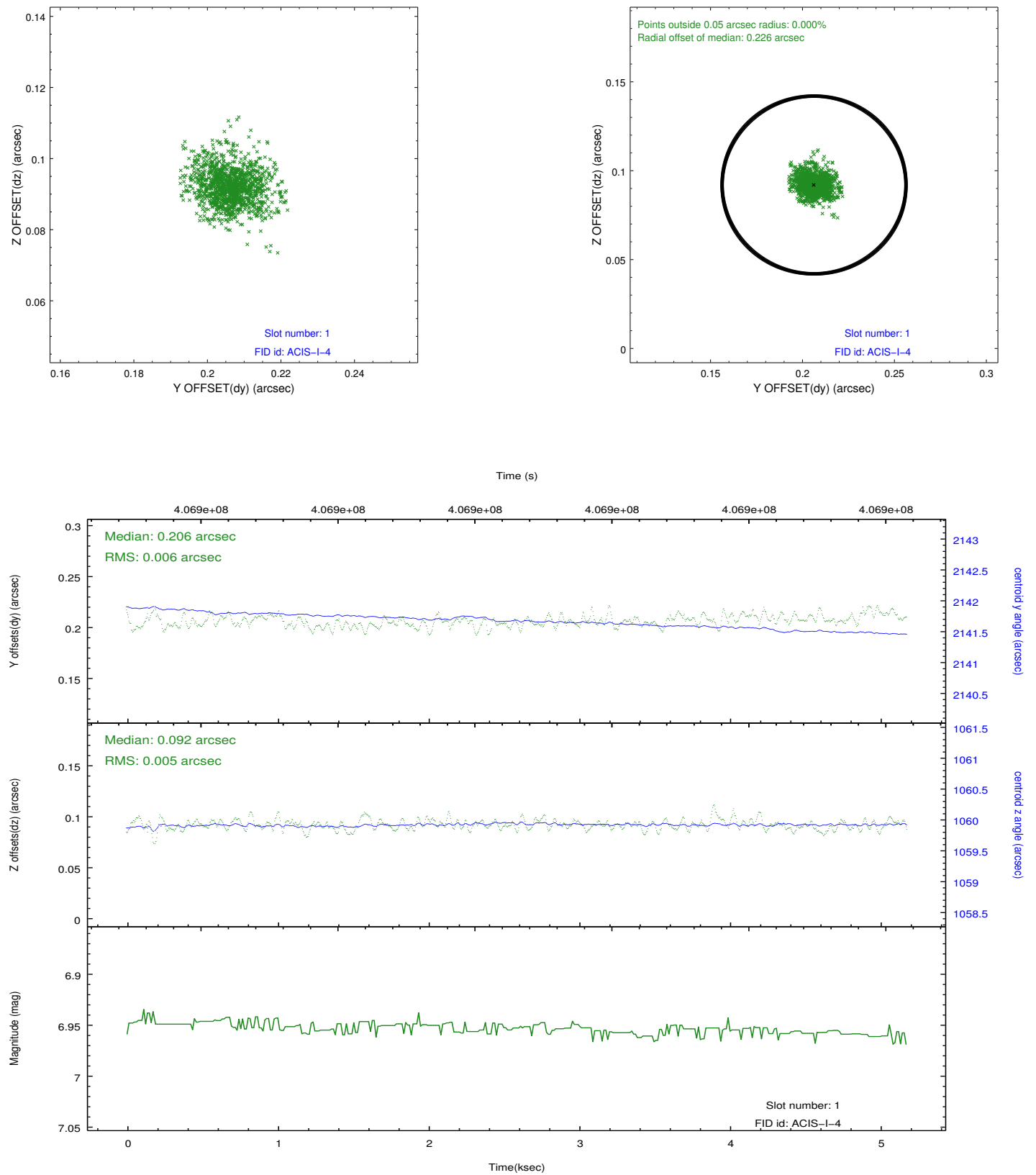


## 2.5 FID Slots

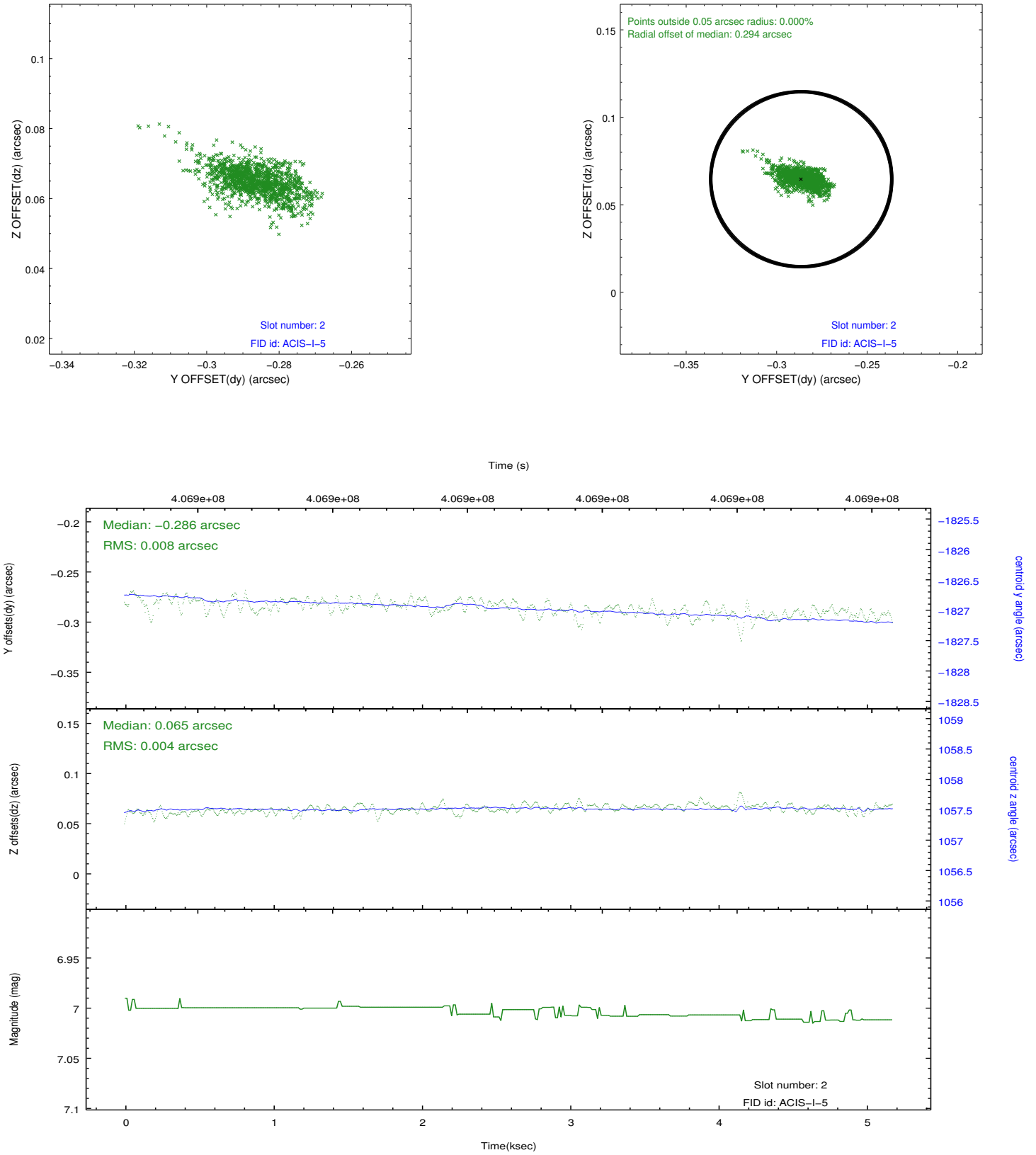
### 2.5.1 Slot 0



## 2.5.2 Slot 1



### 2.5.3 Slot 2



## A Summary

### A.1 Status

V&V Scientist	Jen Lauer
V&V Date (YYYY-MM-DD)	2012.07.16
V&V Edition	1
V&V Disposition and Status	OK
V&V Charge Time	4.7768540902734

### A.2 Comments