

# V&V Reference Report

## L2 ASCDS Version : 8.4.5

Observation 11867 - L2 Version 2  
Chandra X-Ray Center

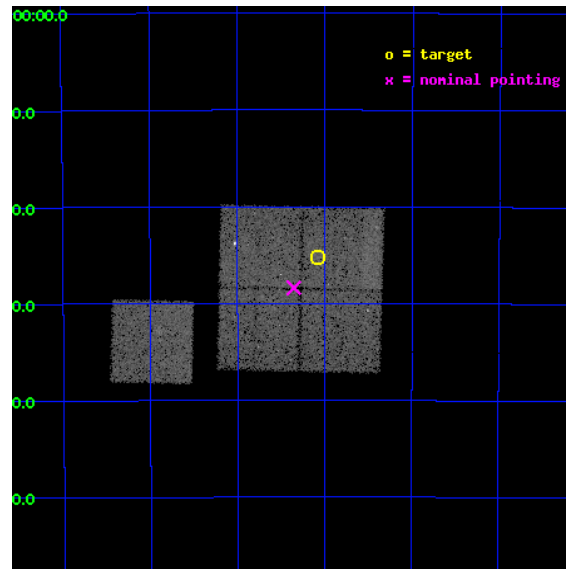
L2 Processing Date : Jun 20 2012

## Contents

<b>1</b>	<b>Front</b>	<b>2</b>
<b>2</b>	<b>OBI</b>	<b>3</b>
2.1	OBI . . . . .	3
2.1.1	Images . . . . .	3
2.1.2	Bias . . . . .	3
2.1.3	Parameters . . . . .	4
2.1.4	Events . . . . .	4
2.2	Compared Parameters . . . . .	5
2.3	Aspect . . . . .	6
2.4	Star Slots . . . . .	9
2.4.1	Slot 3 . . . . .	9
2.4.2	Slot 4 . . . . .	10
2.4.3	Slot 5 . . . . .	11
2.4.4	Slot 6 . . . . .	12
2.4.5	Slot 7 . . . . .	13
2.5	FID Slots . . . . .	14
2.5.1	Slot 0 . . . . .	14
2.5.2	Slot 1 . . . . .	15
2.5.3	Slot 2 . . . . .	16
<b>A</b>	<b>Summary</b>	<b>17</b>
A.1	Status . . . . .	17
A.2	Comments . . . . .	17

# 1 Front

seq_num	800921	Sequence number
obs_id	11867	Observation id
title	CHandra Extended Cluster Cosmology Sample (CHECCS)	Proposal title
observer	Dr. Stephen Murray	Principal investigator
object	XMMUJ0236-5225	Source name
dtcycle	0	&#160
cycle	P	events from which exps? Prim/Second/Both
ra_targ	39.02125	Observer's specified target RA [deg]
dec_targ	-52.419444	Observer's specified target Dec [deg]
ra_nom	39.088467847168	Nominal RA [deg]
dec_nom	-52.473013714174	Nominal Dec [deg]
roll_nom	271.36192825789	Nominal Roll [deg]
revision	2	Processing version of data
ontime	17043.498118103	Sum of GTIs [s]
livetime	16820.812267949	Livetime [s]
ontime0	17043.457078099	Sum of GTIs [s]
ontime1	17043.498118103	Sum of GTIs [s]
ontime2	17037.25732702	Sum of GTIs [s]
ontime3	17040.439207852	Sum of GTIs [s]
ontime6	17037.134117126	Sum of GTIs [s]
l2events	67311	Number of level 2 events

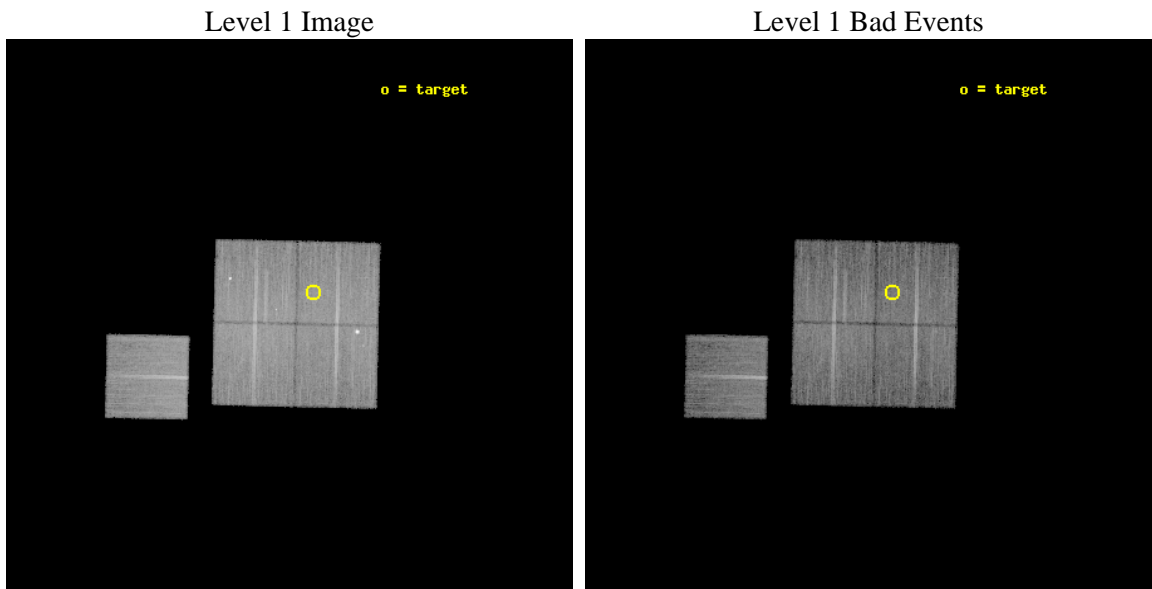




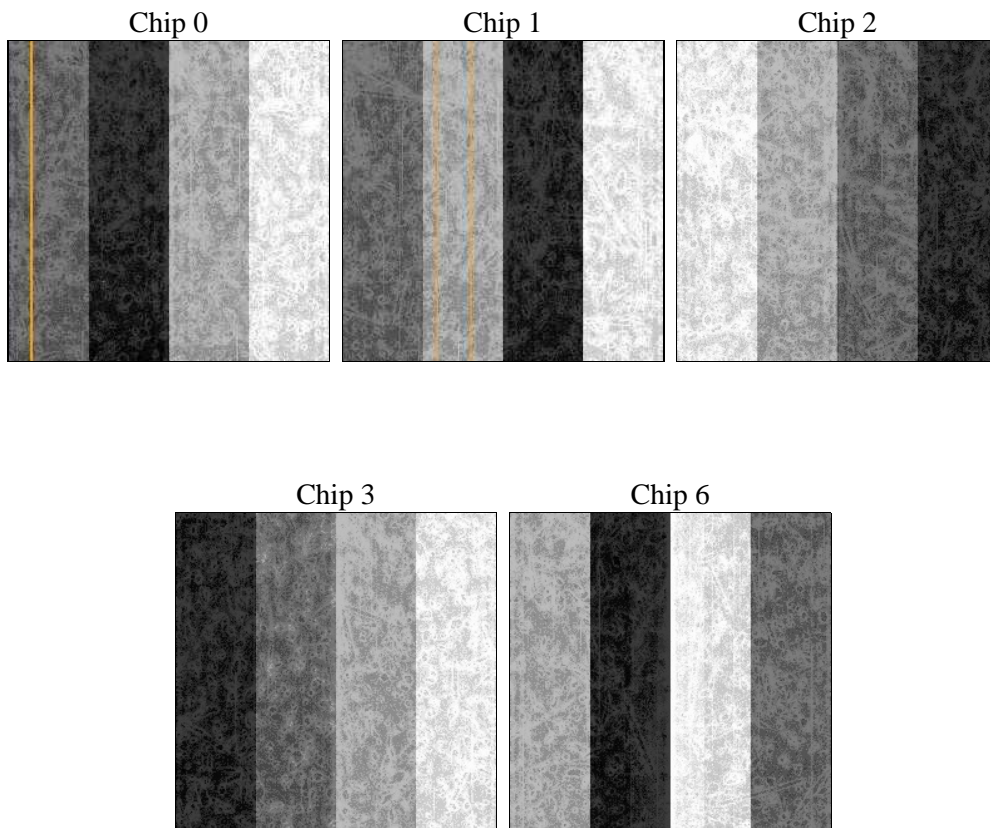
## 2 OBI

### 2.1 OBI

#### 2.1.1 Images



#### 2.1.2 Bias



### 2.1.3 Parameters

obi_num	0	Obi number	sched_exp_time	17000.000000	[s] Scheduled observation exposure time
ascdsver	8.4.5	Processing system revision	ontime	17043.498118103	Sum of GTIs [s]
caldsver	4.4.10	&#160	ontime0	17043.457078099	Sum of GTIs [s]
date	2012-06-21T00:36:48	Date and time of file creation	ontime1	17043.498118103	Sum of GTIs [s]
revision	2	Processing version of data	ontime2	17037.25732702	Sum of GTIs [s]
			ontime3	17040.439207852	Sum of GTIs [s]
			ontime6	17037.134117126	Sum of GTIs [s]
			l1events	725164	Number of level 1 events

### 2.1.4 Events

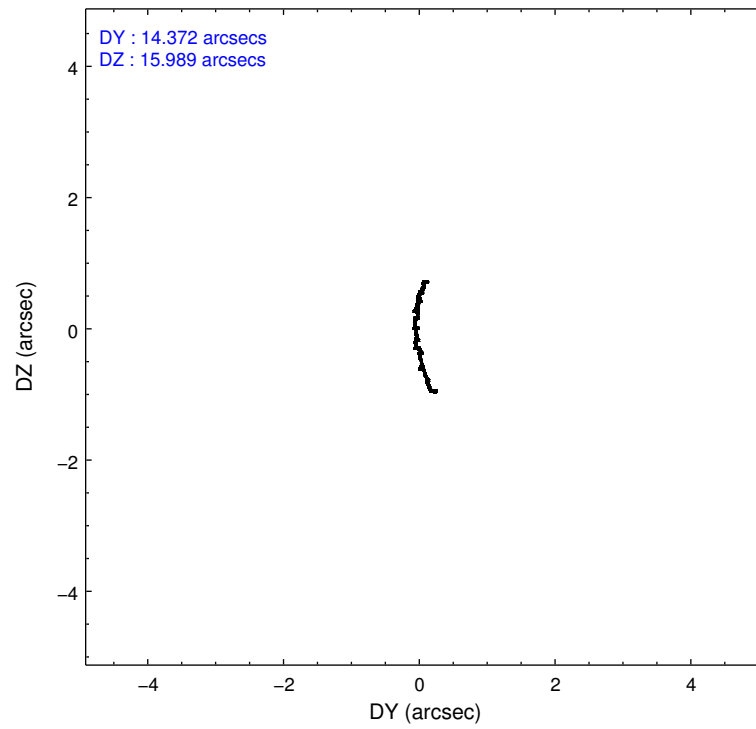
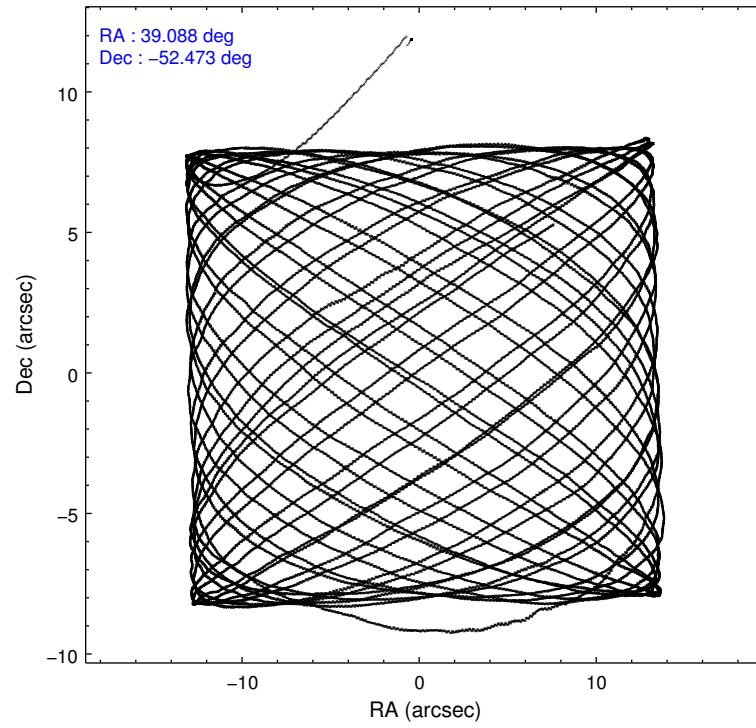
	ccd 0	ccd 1	ccd 2	ccd 3	ccd 6
level 1 events	138232	137343	151529	150908	147152
rejected events	117927	120071	136246	133719	131603
rejected %	85%	87%	89%	88%	89%

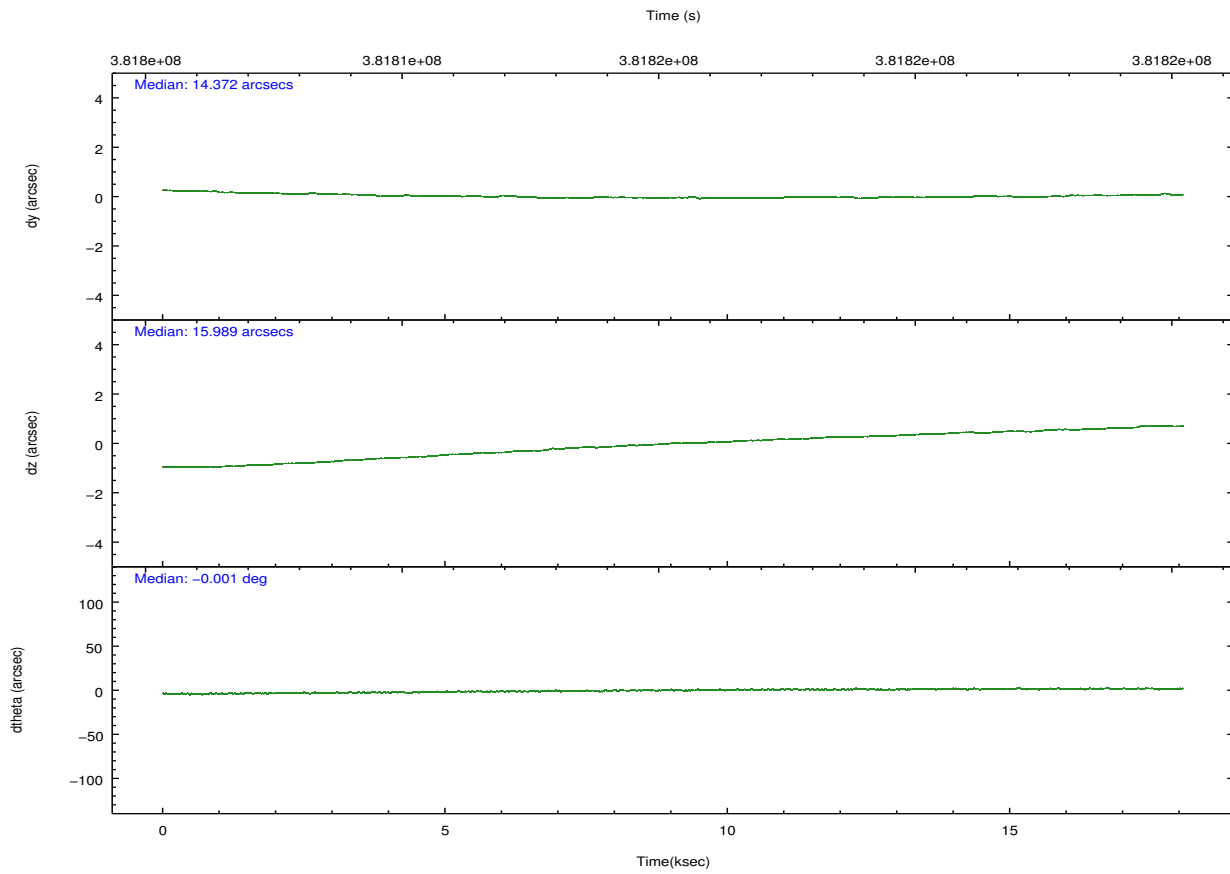
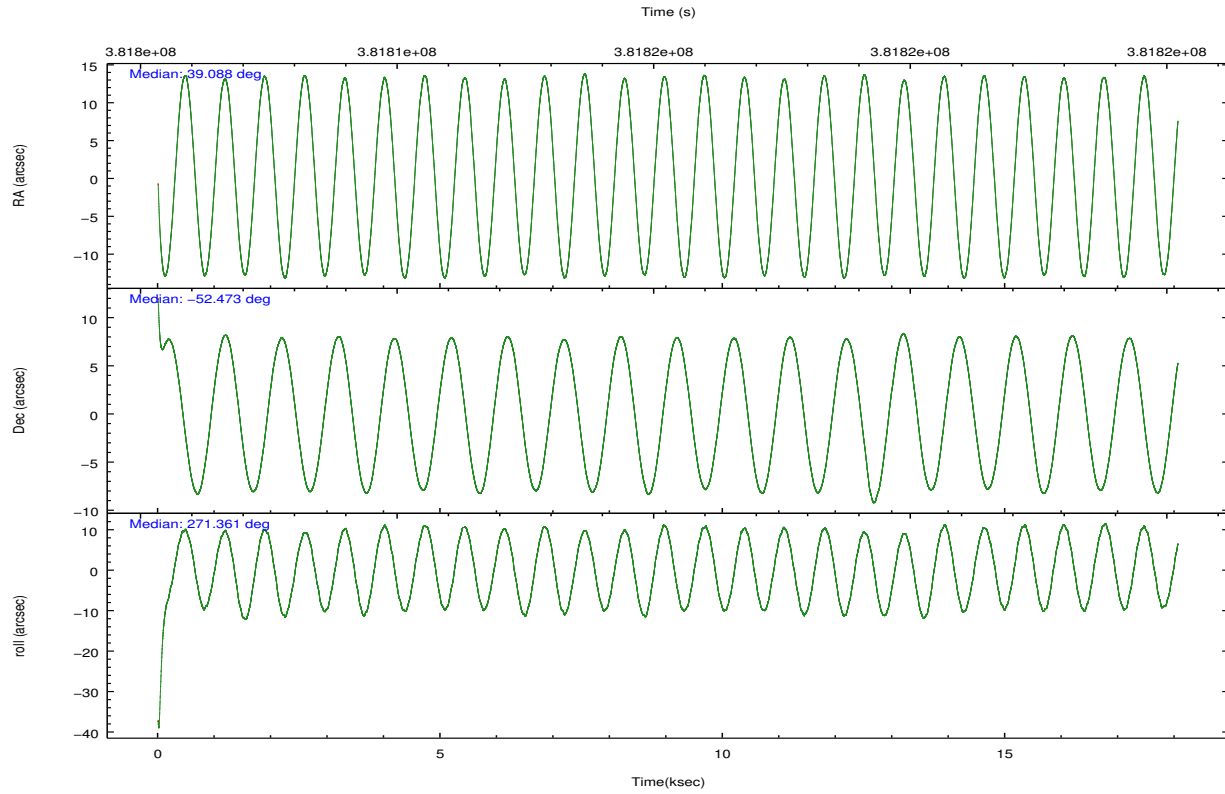
	ccd 0	ccd 1	ccd 2	ccd 3	ccd 6
grade 0 events	5289	6262	5511	7423	5501
	3%	4%	3%	4%	3%
grade 1 events	89	85	101	107	81
	0%	0%	0%	0%	0%
grade 2 events	8860	3991	3722	3459	3352
	6%	2%	2%	2%	2%
grade 3 events	1654	1775	1575	1693	1695
	1%	1%	1%	1%	1%
grade 4 events	1549	1775	1592	1651	1629
	1%	1%	1%	1%	1%
grade 5 events	5436	5943	5179	6175	5842
	3%	4%	3%	4%	3%
grade 6 events	2959	3477	2890	2974	3379
	2%	2%	1%	1%	2%
grade 7 events	112396	114035	130959	127426	125673
	81%	83%	86%	84%	85%

## 2.2 Compared Parameters

Parameter	Planned	Actual	Parameter	Planned	Actual
Instrument	ACIS	ACIS	Obspar format version number	7	7
Detector	ACIS-01236	ACIS-01236	Obspar file type	PREDICTED	ACTUAL
Grating	NONE	NONE	Obspar update status	NONE	UPDATED
Data mode	VFAINT	VFAINT	Number of optional ACIS chips dropped	0	0
Observation mode	POINTING	POINTING	On-chip summing requested	N	N
[deg] Pointing RA	39.064871	39.08846784716752	Subarray requested	NONE	NONE
[deg] Pointing Dec	-52.449609	-52.47301371417386	Alternating exposures requested	N	N
[deg] Pointing Roll	271.134557	271.3619282578877	[s] Primary exposure time	0.000000	3.1
[mm] SIM focus pos	-0.782348	-0.7809083437167272			
[mm] SIM defocus	0	0.001439871863259334			
[mm] SIM translation stage pos	-233.592463	-233.5874344608287			
[mm] SIM translation stage offset	0	-0.005018542100998502			
[s] Observation start time (MET)	381807309.184000	381805211.88181			
Observation start date	2010-02-06T01:34:03	2010-02-06T01:00:11			
[s] Observation end time (MET)	381824309.184000	381824986.18281			
Observation end date	2010-02-06T06:17:23	2010-02-06T06:29:46			
Read mode	TIMED	TIMED			

## 2.3 Aspect



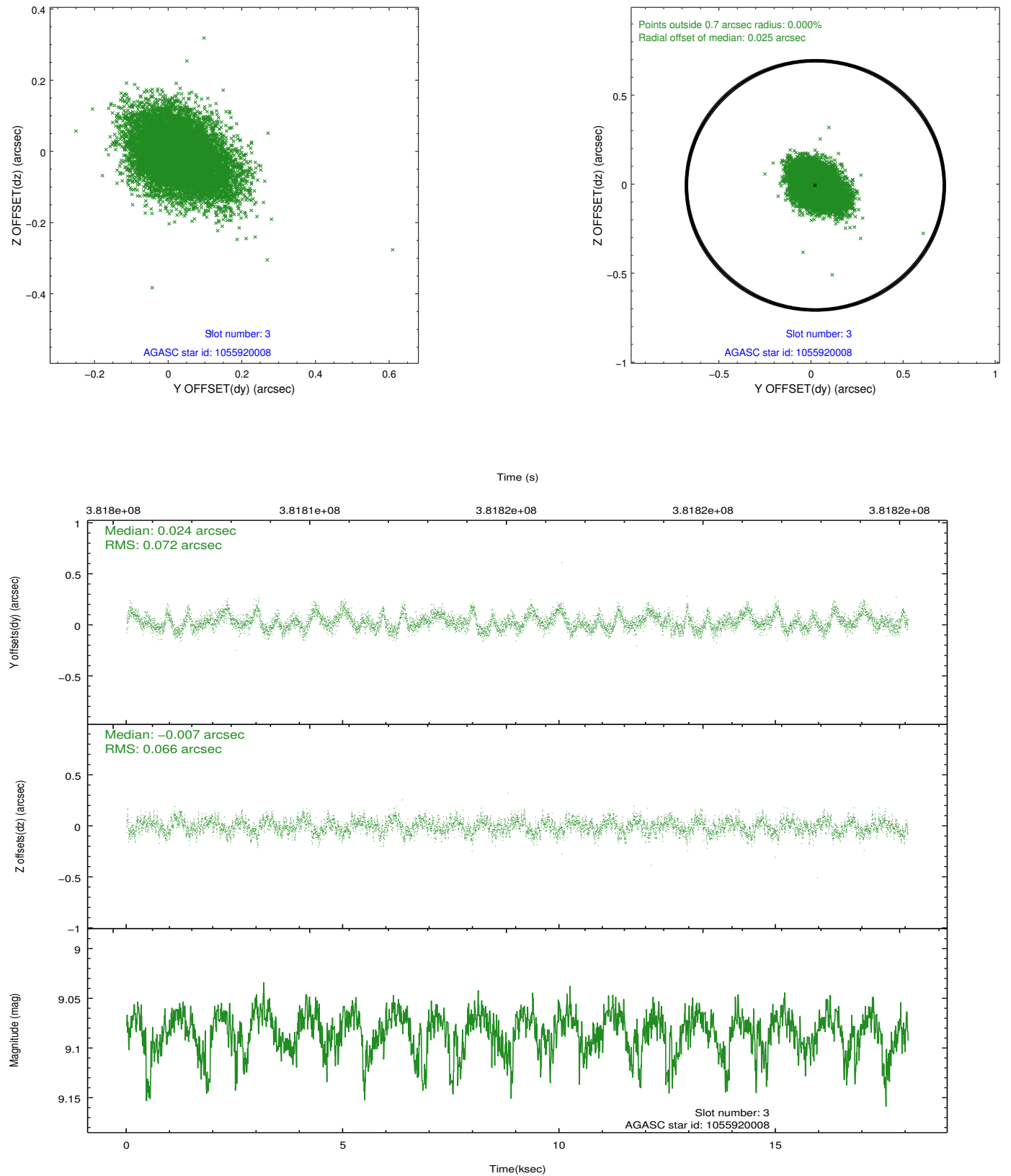


### Slot Statistics

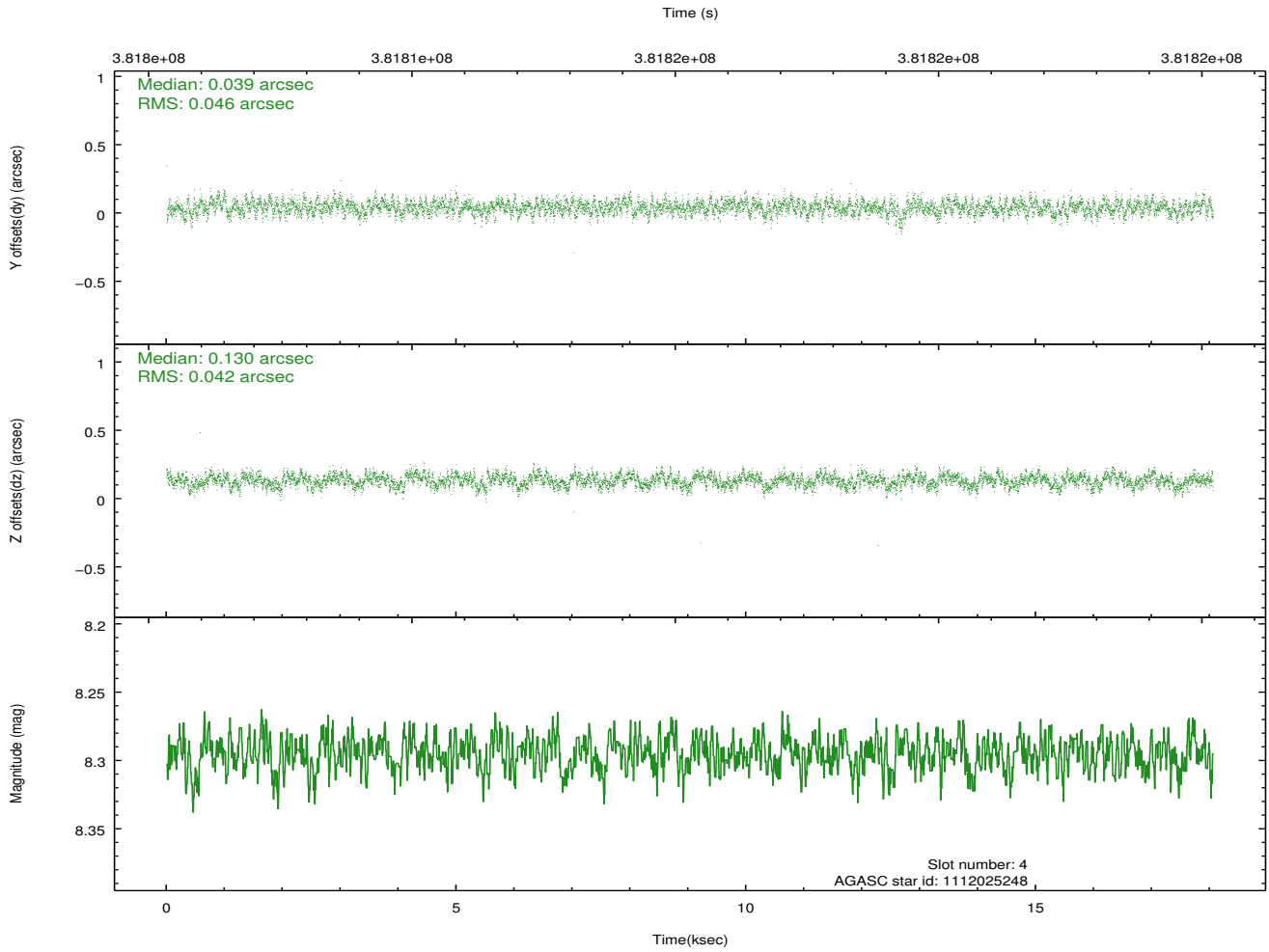
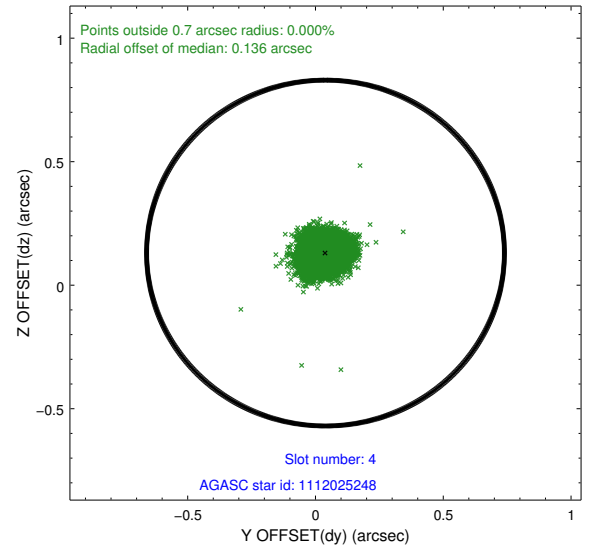
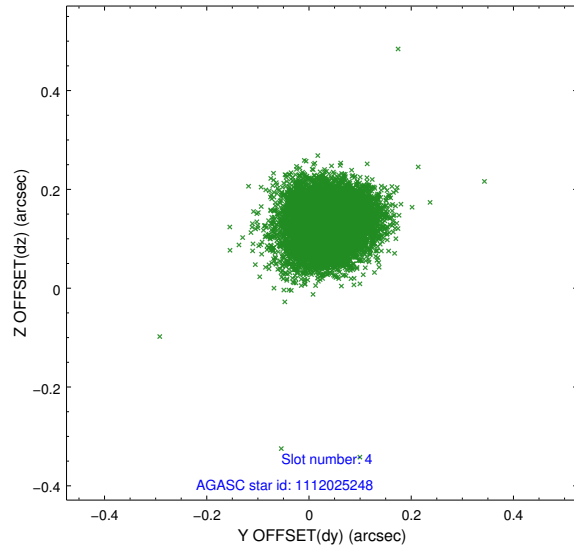
slot	status	id	mag	n_pts	med_dy	med_dz	dr1	dr2	ra	dec	mean_y	mean_z
0	FID	ACIS-I-1	7.06	4405	0.062	-0.043	0.019	0.048	0.000000	0.000000	925.13	-839.57
1	FID	ACIS-I-5	7.05	4405	-0.223	0.058	0.016	0.025	0.000000	0.000000	-1823.12	1057.91
2	FID	ACIS-I-6	7.06	4405	0.071	0.052	0.014	0.025	0.000000	0.000000	390.46	1702.65
3	GUIDE	1055920008	9.08	8804	0.024	-0.007	0.103	0.170	39.596271	-52.346490	-343.39	1175.71
4	GUIDE	1112025248	8.30	8807	0.039	0.130	0.065	0.104	39.007472	-53.046025	2144.76	-165.84
5	GUIDE	1112026128	8.90	8803	0.038	0.029	0.077	0.131	38.912146	-52.876527	1531.21	-361.85
6	GUIDE	1112026392	7.03	8807	-0.078	-0.177	0.067	0.109	39.781517	-52.934809	1784.85	1520.57
7	GUIDE	1055917704	8.69	8802	-0.033	0.030	0.075	0.119	38.591744	-51.795371	-2372.21	-1006.23

## 2.4 Star Slots

### 2.4.1 Slot 3

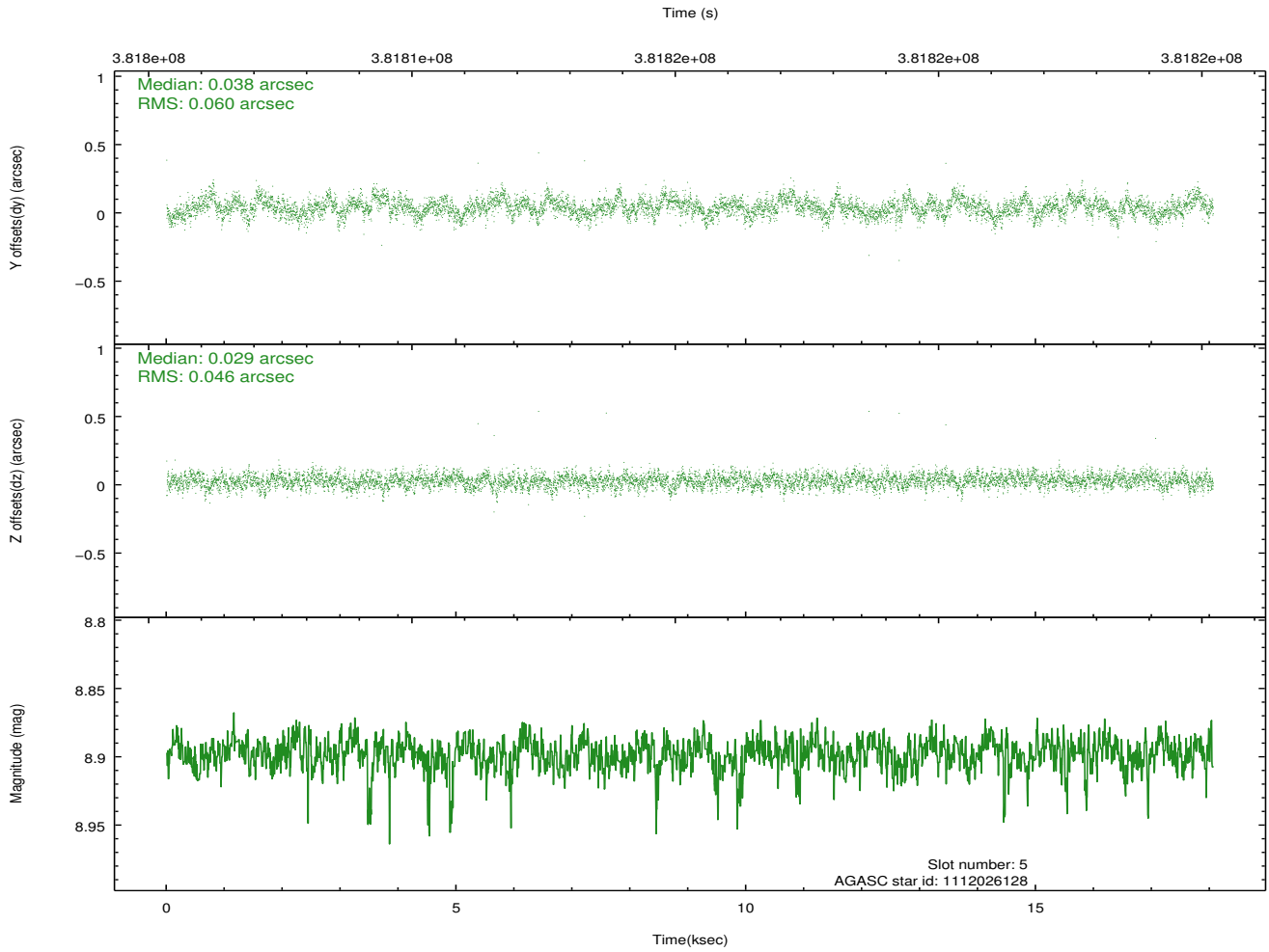
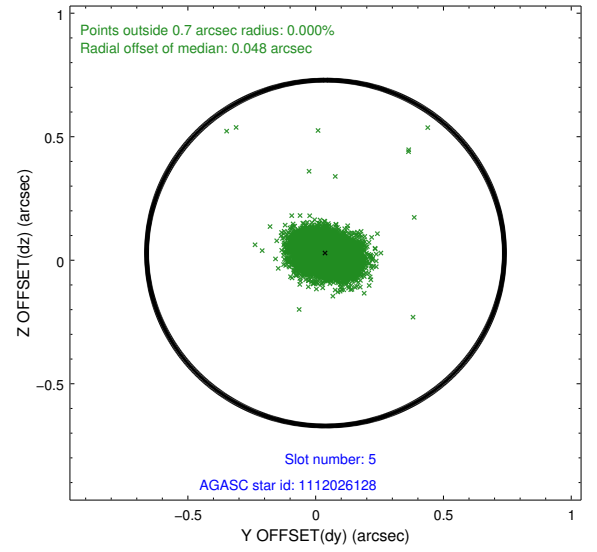
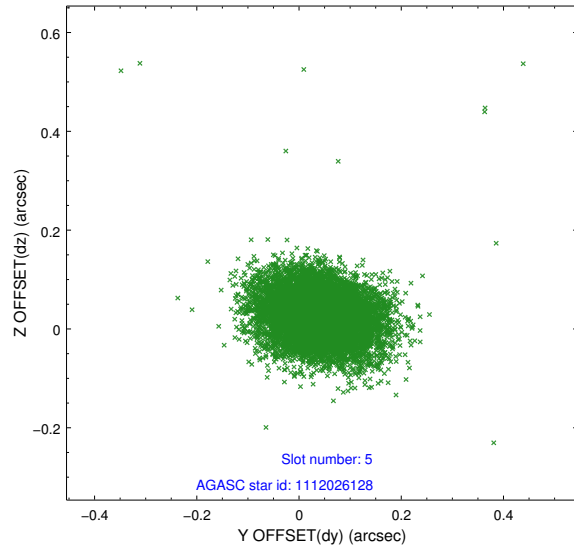


## 2.4.2 Slot 4

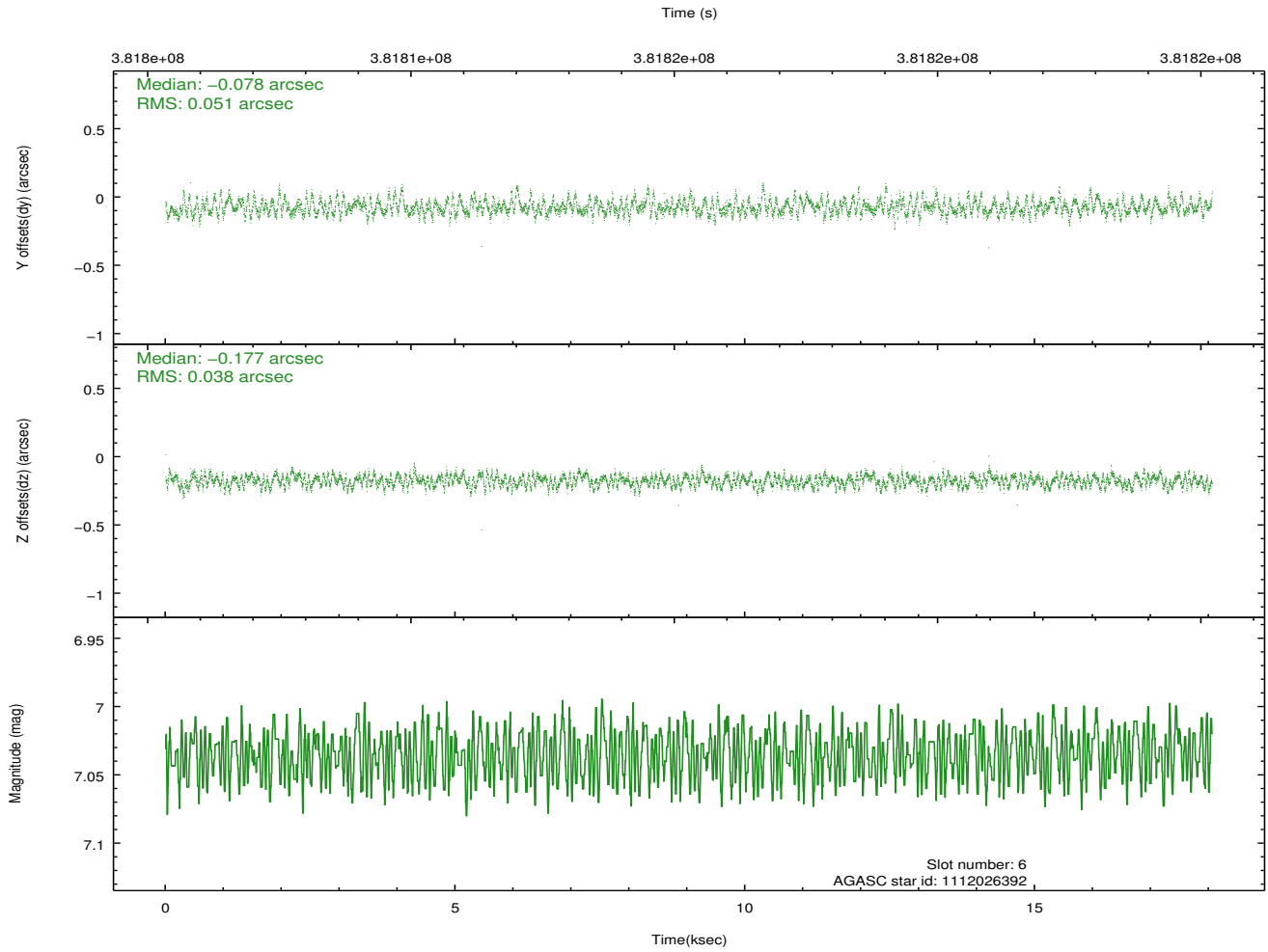
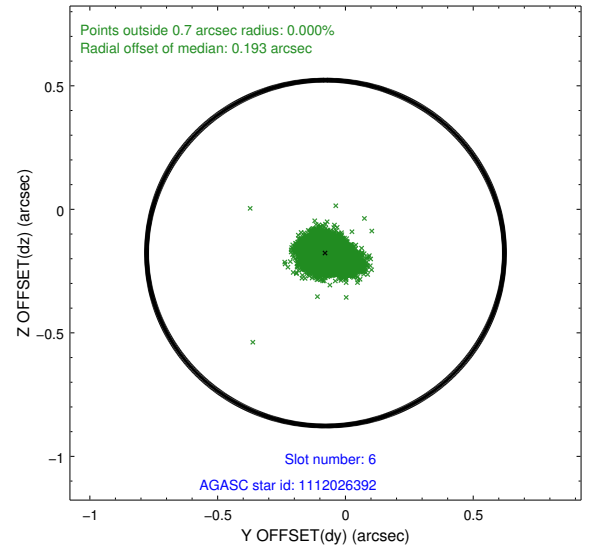
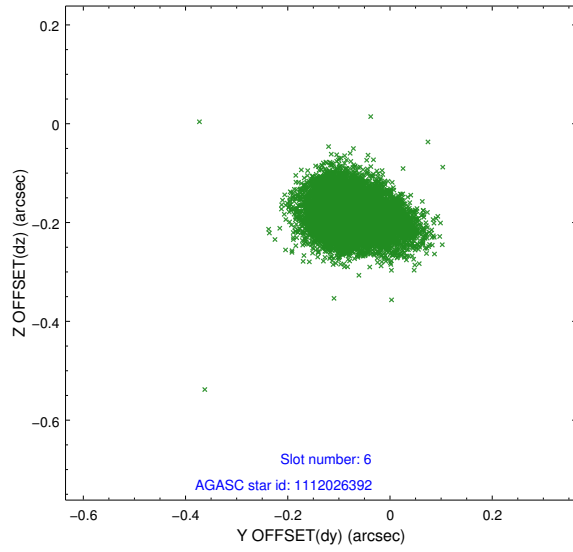




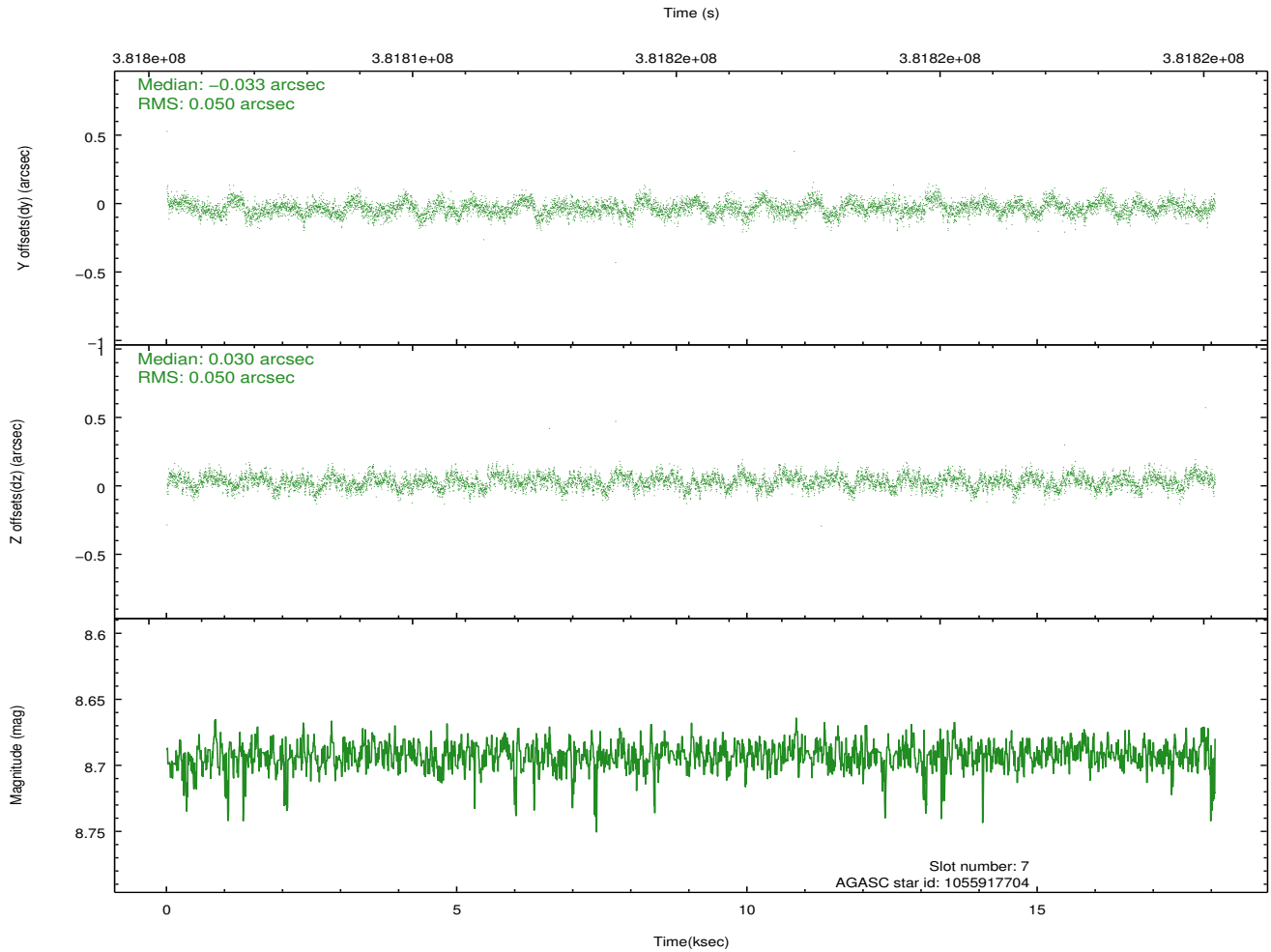
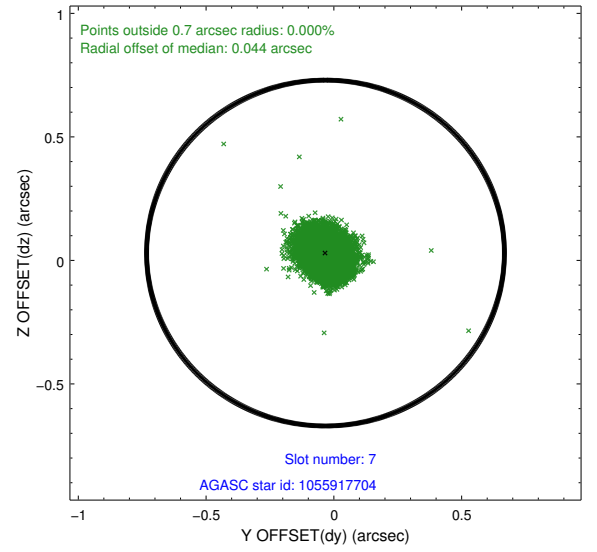
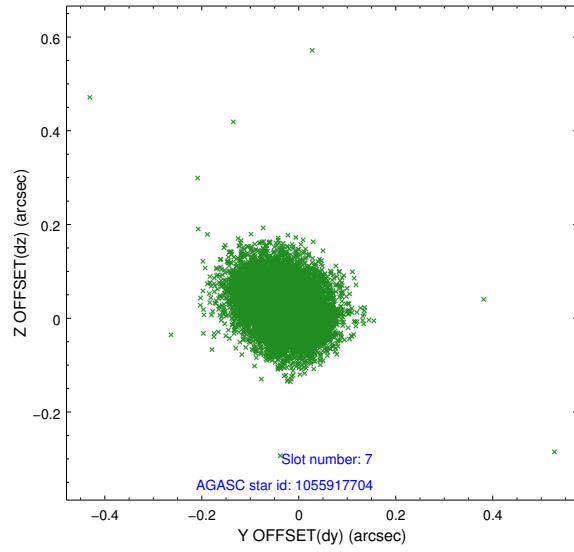
### 2.4.3 Slot 5



## 2.4.4 Slot 6

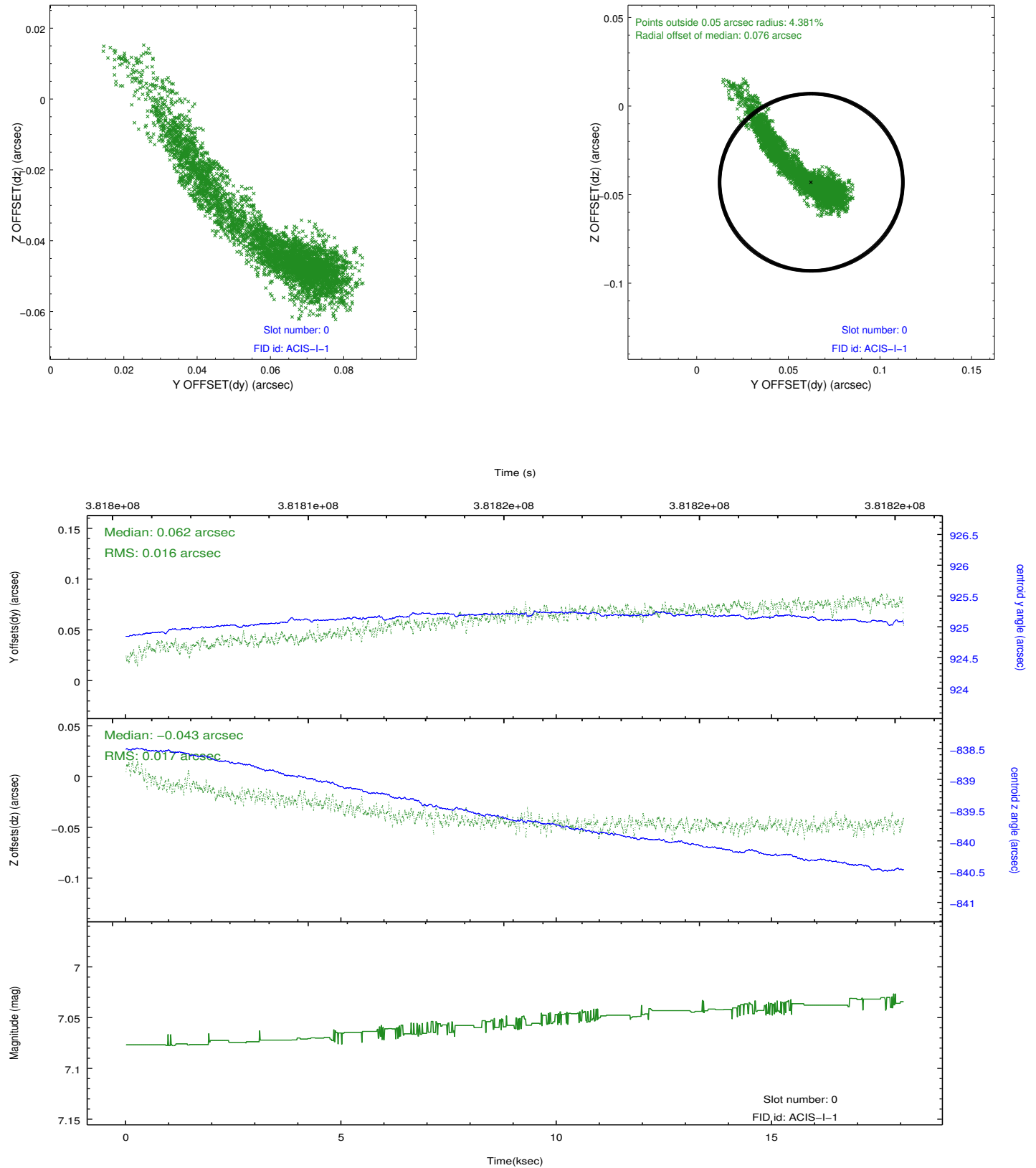


## 2.4.5 Slot 7

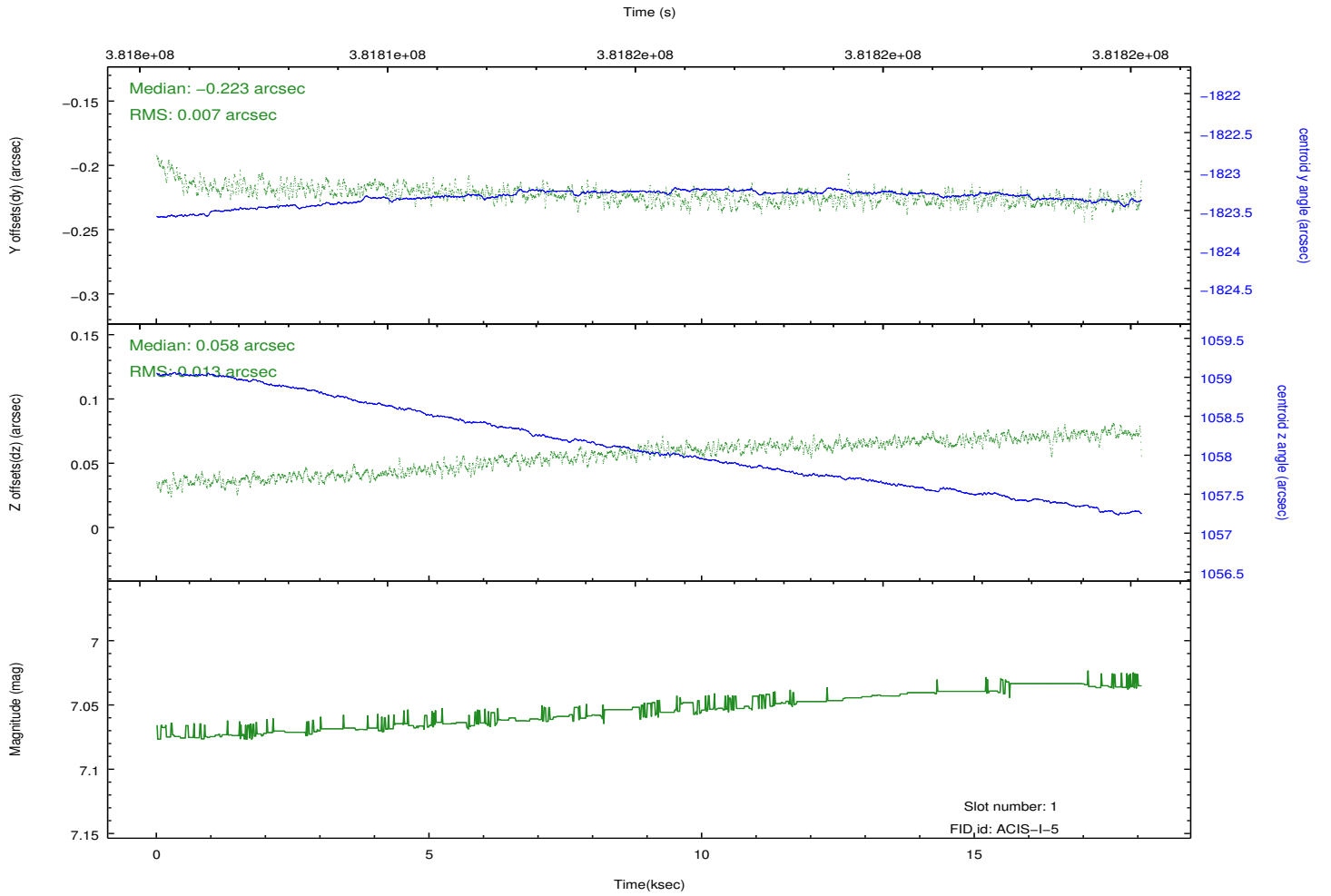
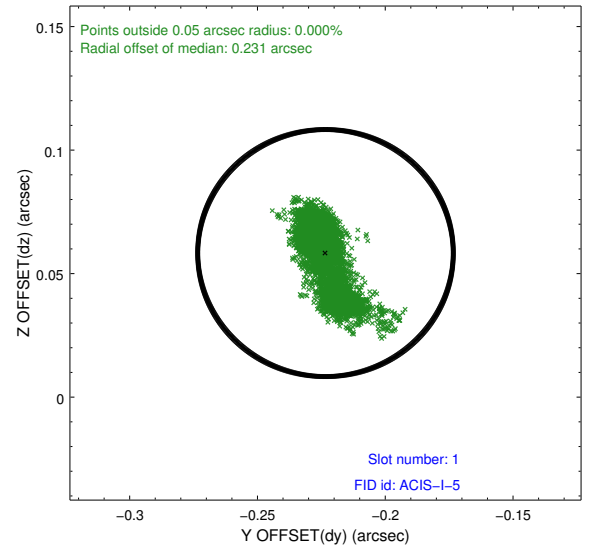
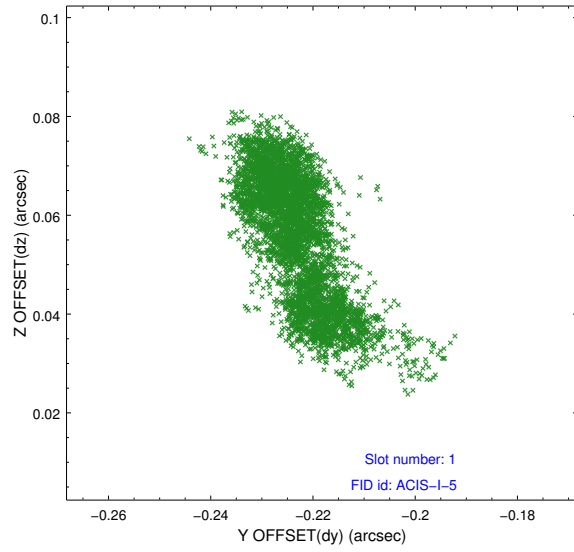


## 2.5 FID Slots

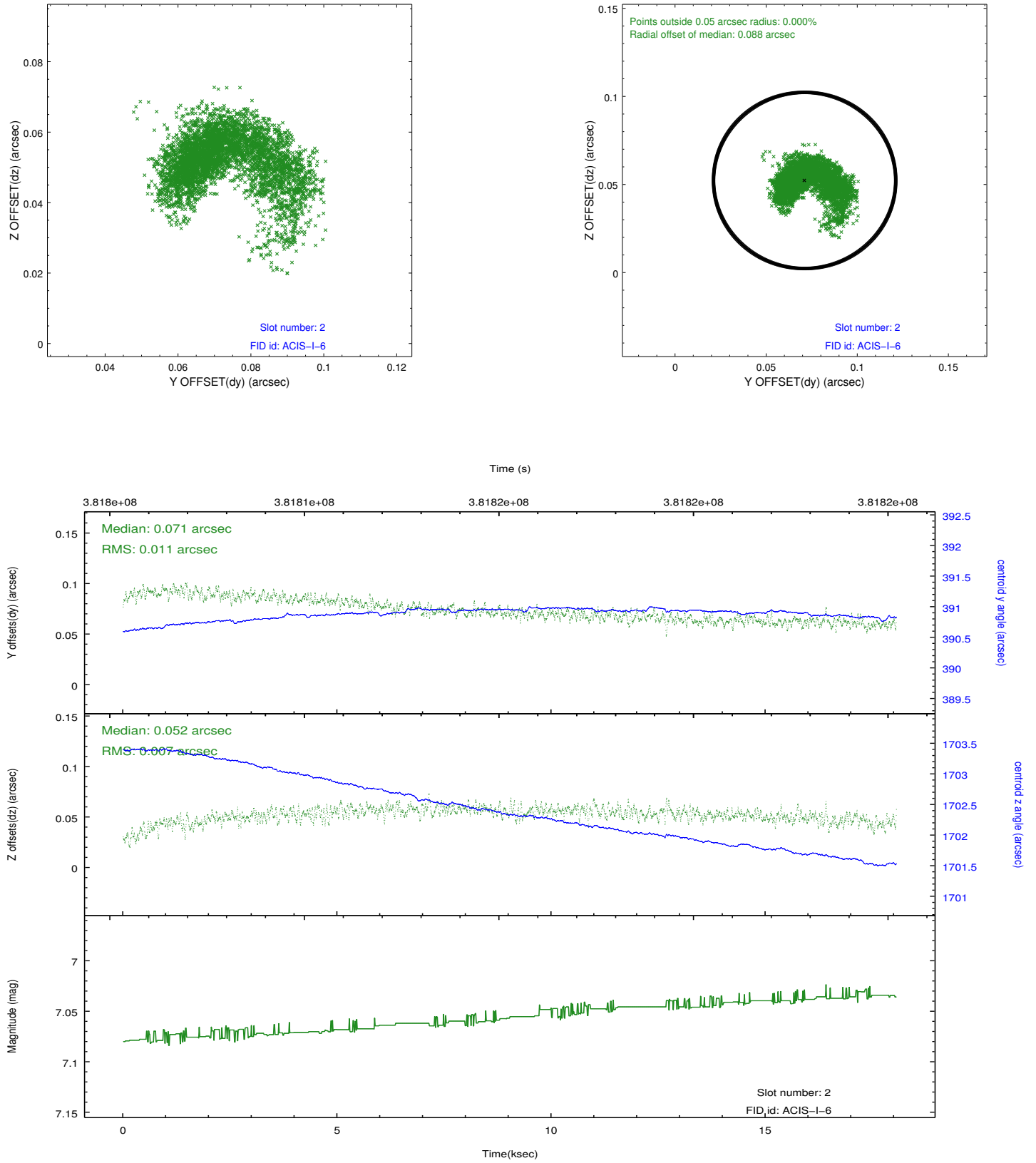
### 2.5.1 Slot 0



## 2.5.2 Slot 1



### 2.5.3 Slot 2



## **A Summary**

### **A.1 Status**

V&V Scientist	Jen Lauer
V&V Date (YYYY-MM-DD)	2012.06.27
V&V Edition	1
V&V Disposition and Status	OK
V&V Charge Time	17.043498114765

### **A.2 Comments**