

V&V Reference Report

L2 ASCDS Version : 8.4.5

Observation 11770 - L2 Version 3
Chandra X-Ray Center

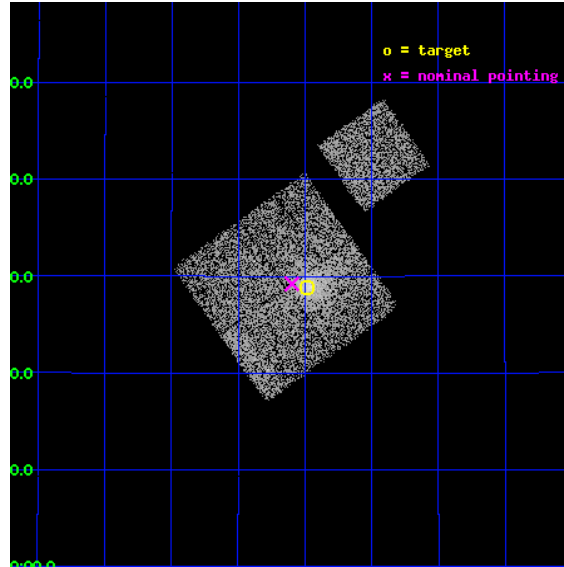
L2 Processing Date : Jun 17 2012

Contents

1	Front	2
2	OBI	3
2.1	OBI	3
2.1.1	Images	3
2.1.2	Bias	3
2.1.3	Parameters	4
2.1.4	Events	4
2.2	Compared Parameters	5
2.3	Aspect	6
2.4	Star Slots	9
2.4.1	Slot 3	9
2.4.2	Slot 4	10
2.4.3	Slot 5	11
2.4.4	Slot 7	12
2.5	FID Slots	13
2.5.1	Slot 0	13
2.5.2	Slot 1	14
2.5.3	Slot 2	15
A	Summary	16
A.1	Status	16
A.2	Comments	16

1 Front

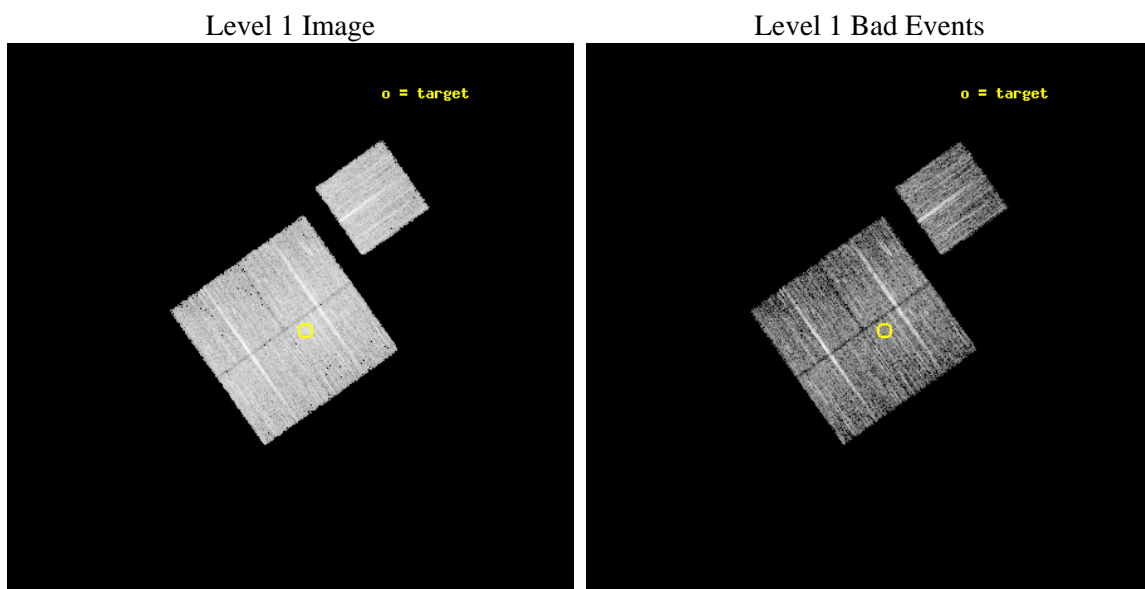
seq_num	800910	Sequence number
obs_id	11770	Observation id
title	The X-Ray, SZ, and Optical Scaling Relations of Massive Galaxy Clusters	Proposal title
observer	Dr. Eli Rykoff	Principal investigator
object	A1246	Source name
dtcycle	0	
cycle	P	events from which exps? Prim/Second/Both
ra_targ	170.995	Observer's specified target RA [deg]
dec_targ	21.480472	Observer's specified target Dec [deg]
ra_nom	171.02429781011	Nominal RA [deg]
dec_nom	21.486900900721	Nominal Dec [deg]
roll_nom	54.641426793528	Nominal Roll [deg]
revision	3	Processing version of data
ontime	5068.459048748	Sum of GTIs [s]
livetime	5002.2358999309	Livetime [s]
ontime0	5071.6000390053	Sum of GTIs [s]
ontime1	5071.6000390053	Sum of GTIs [s]
ontime2	5071.6000390053	Sum of GTIs [s]
ontime3	5068.459048748	Sum of GTIs [s]
ontime6	5071.6000390053	Sum of GTIs [s]
l2events	22169	Number of level 2 events



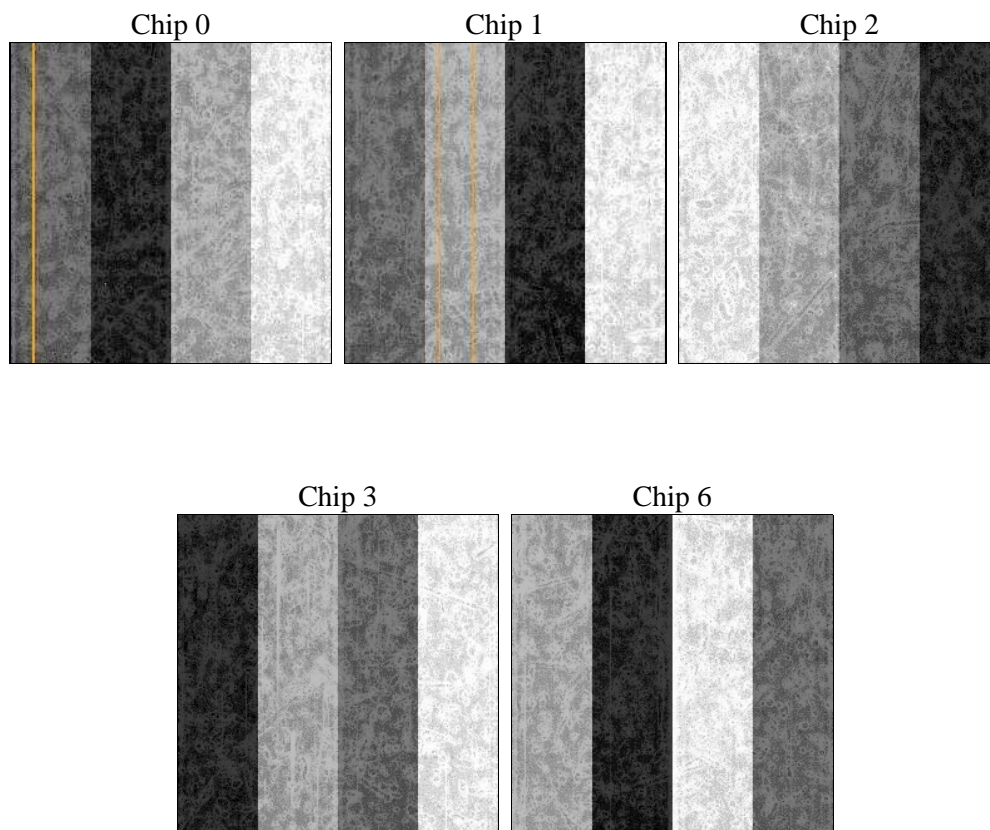
2 OBI

2.1 OBI

2.1.1 Images



2.1.2 Bias



2.1.3 Parameters

obi_num	0	Obi number	sched_exp_time	5000.219000	[s] Scheduled observation exposure time
ascdsver	8.4.5	Processing system revision	ontime	5068.459048748	Sum of GTIs [s]
caldsver	4.4.10	 	ontime0	5071.6000390053	Sum of GTIs [s]
date	2012-06-17T12:39:34	Date and time of file creation	ontime1	5071.6000390053	Sum of GTIs [s]
revision	3	Processing version of data	ontime2	5071.6000390053	Sum of GTIs [s]
			ontime3	5068.459048748	Sum of GTIs [s]
			ontime6	5071.6000390053	Sum of GTIs [s]
			l1events	223669	Number of level 1 events

2.1.4 Events

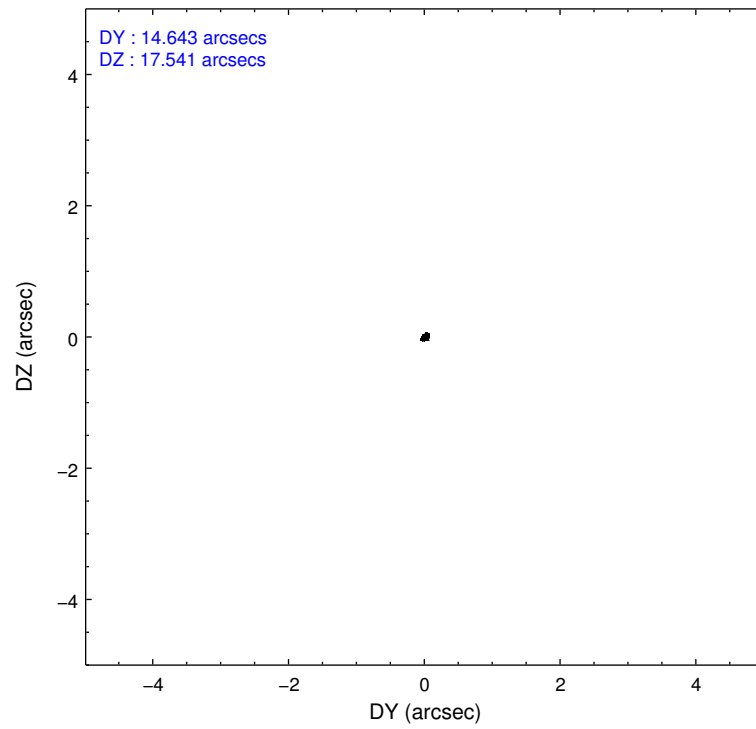
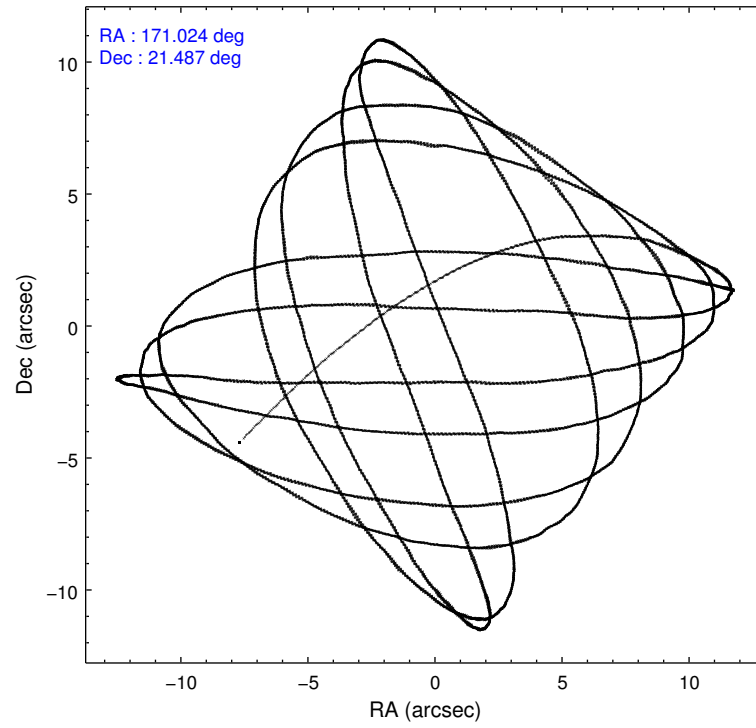
	ccd 0	ccd 1	ccd 2	ccd 3	ccd 6
level 1 events	41645	44538	45814	46597	45075
rejected events	36897	39158	41003	39959	40407
rejected %	88%	87%	89%	85%	89%

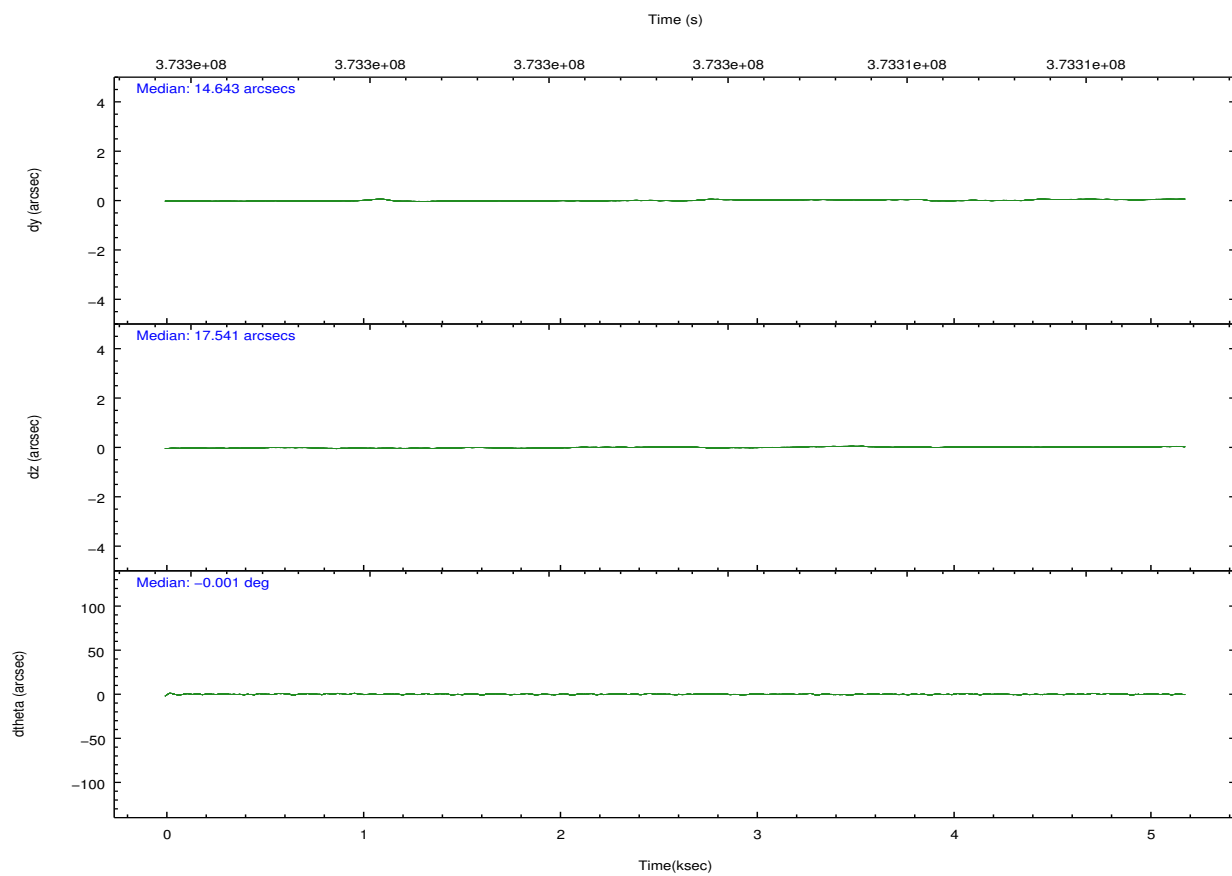
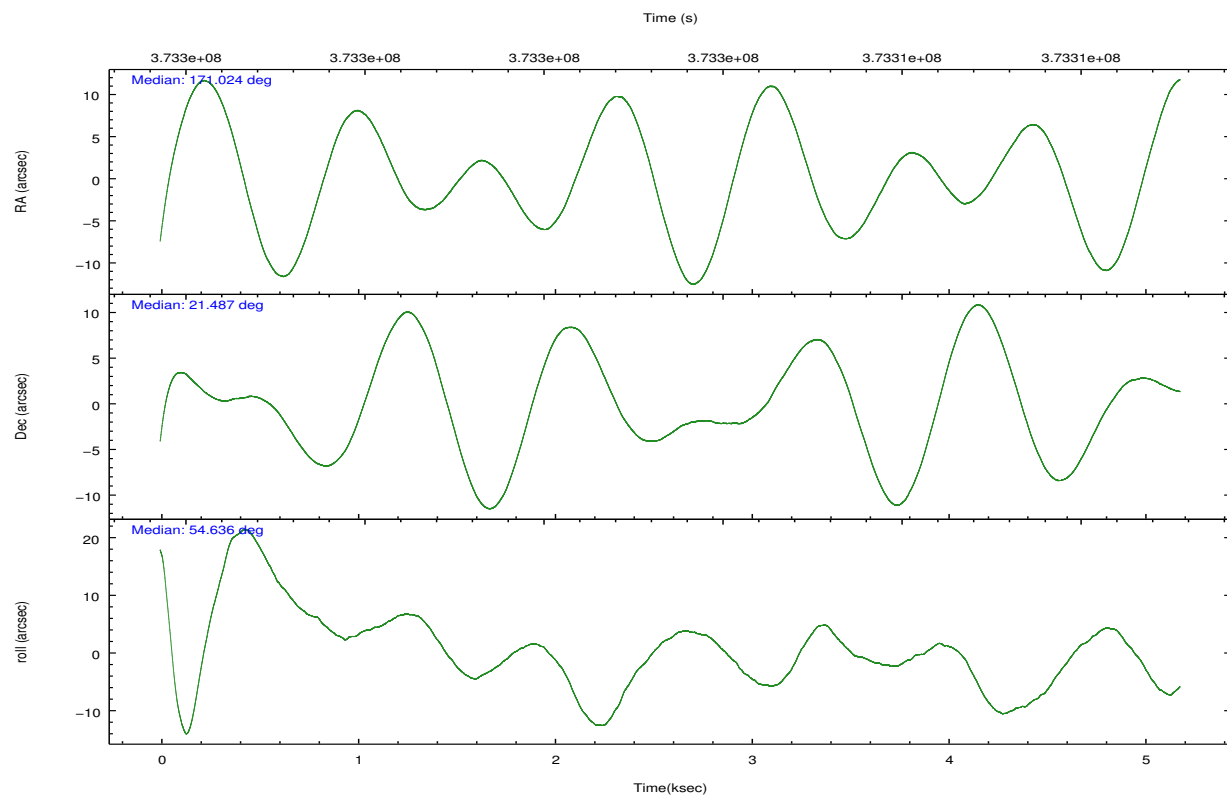
	ccd 0	ccd 1	ccd 2	ccd 3	ccd 6
grade 0 events	1655	2039	1925	3477	1563
	3%	4%	4%	7%	3%
grade 1 events	30	19	22	52	23
	0%	0%	0%	0%	0%
grade 2 events	1195	1238	1125	1155	1069
	2%	2%	2%	2%	2%
grade 3 events	529	524	462	559	487
	1%	1%	1%	1%	1%
grade 4 events	469	555	461	536	493
	1%	1%	1%	1%	1%
grade 5 events	1621	1781	1600	1857	1753
	3%	3%	3%	3%	3%
grade 6 events	904	1026	842	915	1059
	2%	2%	1%	1%	2%
grade 7 events	35242	37356	39377	38046	38628
	84%	83%	85%	81%	85%

2.2 Compared Parameters

Parameter	Planned	Actual	Parameter	Planned	Actual
Instrument	ACIS	ACIS	Obspar format version number	7	7
Detector	ACIS-01236	ACIS-01236	Obspar file type	PREDICTED	ACTUAL
Grating	NONE	NONE	Obspar update status	NONE	UPDATED
Data mode	VFAINT	VFAINT	Number of optional ACIS chips dropped	0	0
Observation mode	POINTING	POINTING	On-chip summing requested	N	N
[deg] Pointing RA	171.021601	171.0242978101129	Subarray requested	NONE	NONE
[deg] Pointing Dec	21.459499	21.48690090072135	Alternating exposures requested	N	N
[deg] Pointing Roll	54.433693	54.64142679352846	[s] Primary exposure time	0.000000	3.1
[mm] SIM focus pos	-0.782348	-0.7809083437167272			
[mm] SIM defocus	0	0.001439871863259334			
[mm] SIM translation stage pos	-233.592463	-233.5874344608287			
[mm] SIM translation stage offset	0	-0.005018542100998502			
[s] Observation start time (MET)	373302286.184000	373301343.53974			
Observation start date	2009-10-30T15:03:40	2009-10-30T14:49:03			
[s] Observation end time (MET)	373307286.184000	373307529.41505			
Observation end date	2009-10-30T16:27:00	2009-10-30T16:32:09			
Read mode	TIMED	TIMED			

2.3 Aspect



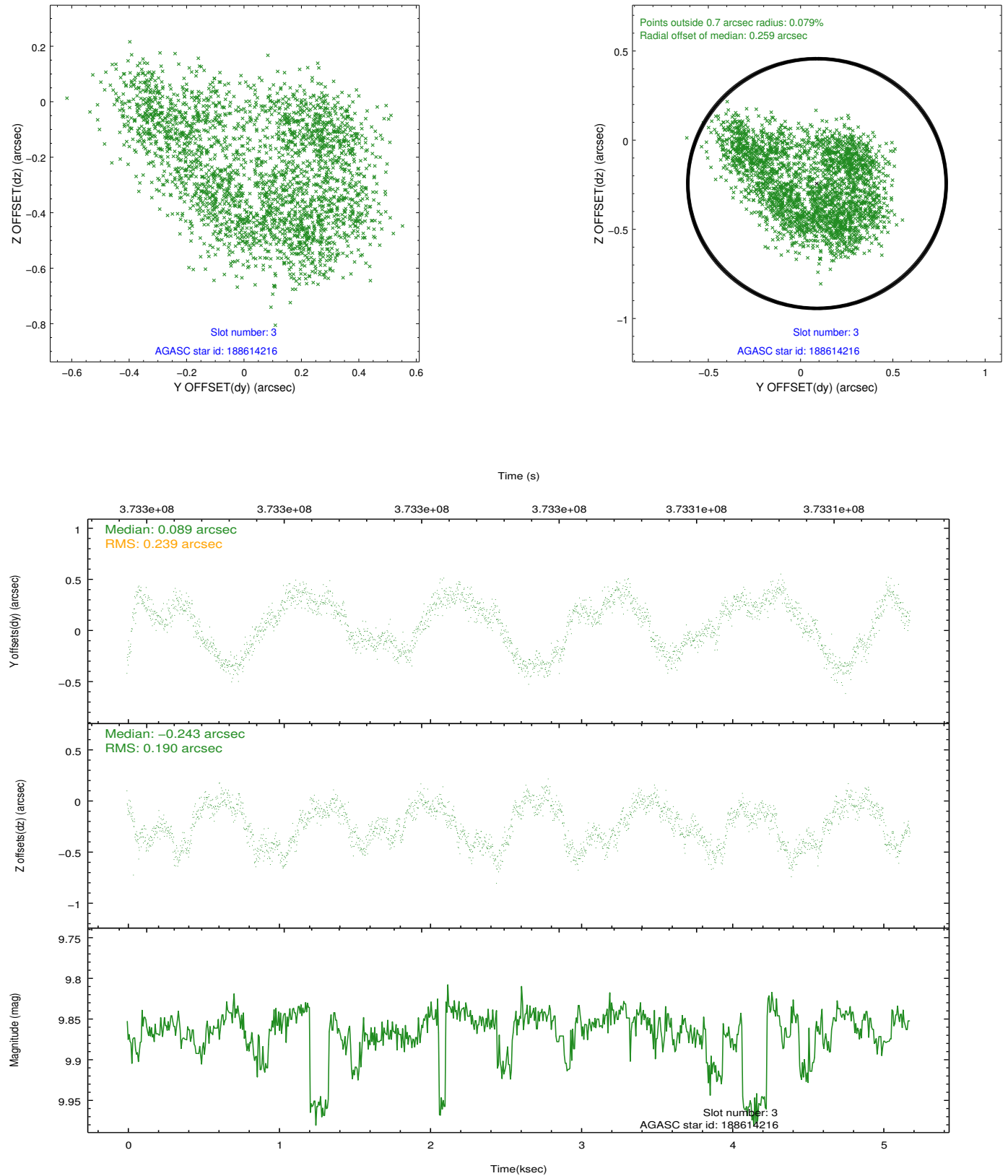


Slot Statistics

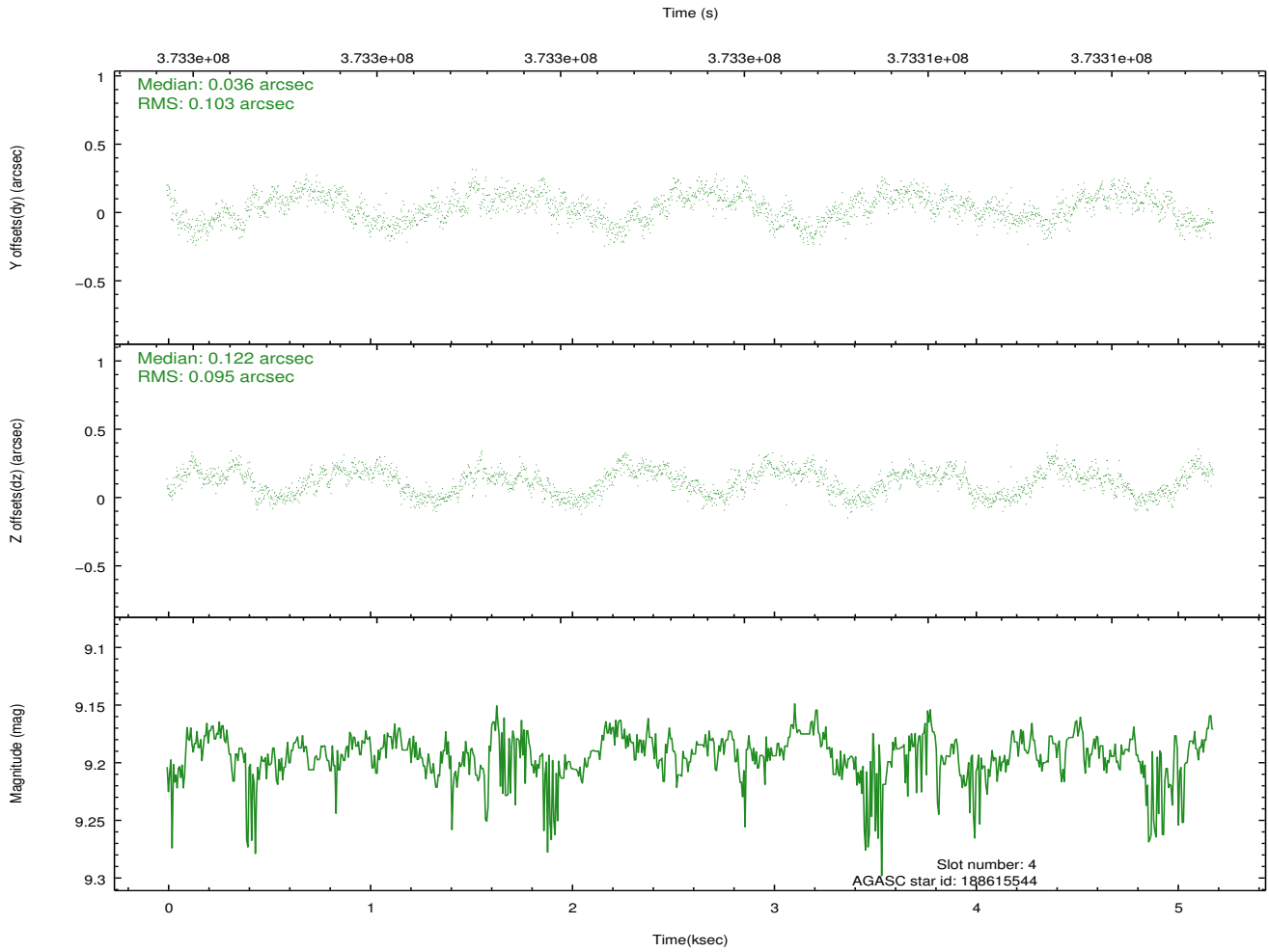
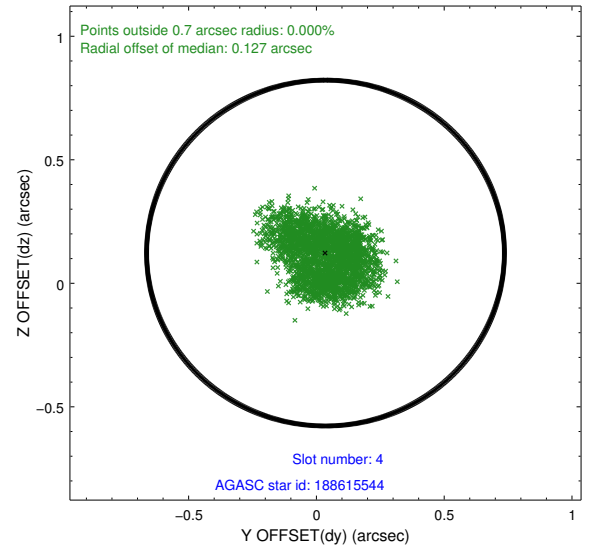
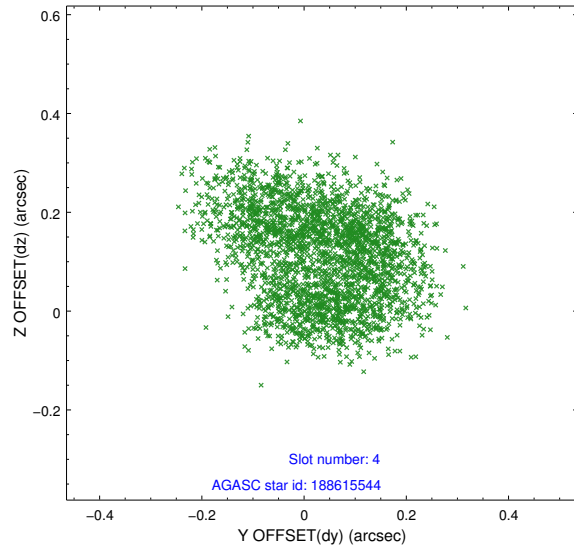
slot	status	id	mag	n_pts	med_dy	med_dz	dr1	dr2	ra	dec	mean_y	mean_z
0	FID	ACIS-I-1	7.00	1264	0.061	-0.003	0.006	0.010	0.000000	0.000000	924.87	-841.22
1	FID	ACIS-I-5	6.99	1264	-0.214	0.070	0.006	0.010	0.000000	0.000000	-1822.85	1055.79
2	FID	ACIS-I-6	7.00	1264	0.061	0.004	0.006	0.010	0.000000	0.000000	389.17	1701.52
3	GUIDE	188614216	9.86	2519	0.089	-0.243	0.324	0.500	171.138967	21.779325	1165.02	350.89
4	GUIDE	188615544	9.19	2528	0.036	0.122	0.153	0.226	171.668254	21.828845	2342.81	-981.59
5	GUIDE	188616816	8.33	2529	-0.165	-0.022	0.108	0.160	171.676755	21.618349	1745.27	-1448.20
6	OMITTED		0.00	0	0.000	0.000	0.000	0.000	0.000000	0.000000	0.00	0.00
7	GUIDE	188620576	10.26	2525	0.057	0.162	0.225	0.392	171.717797	21.195631	591.78	-2450.31

2.4 Star Slots

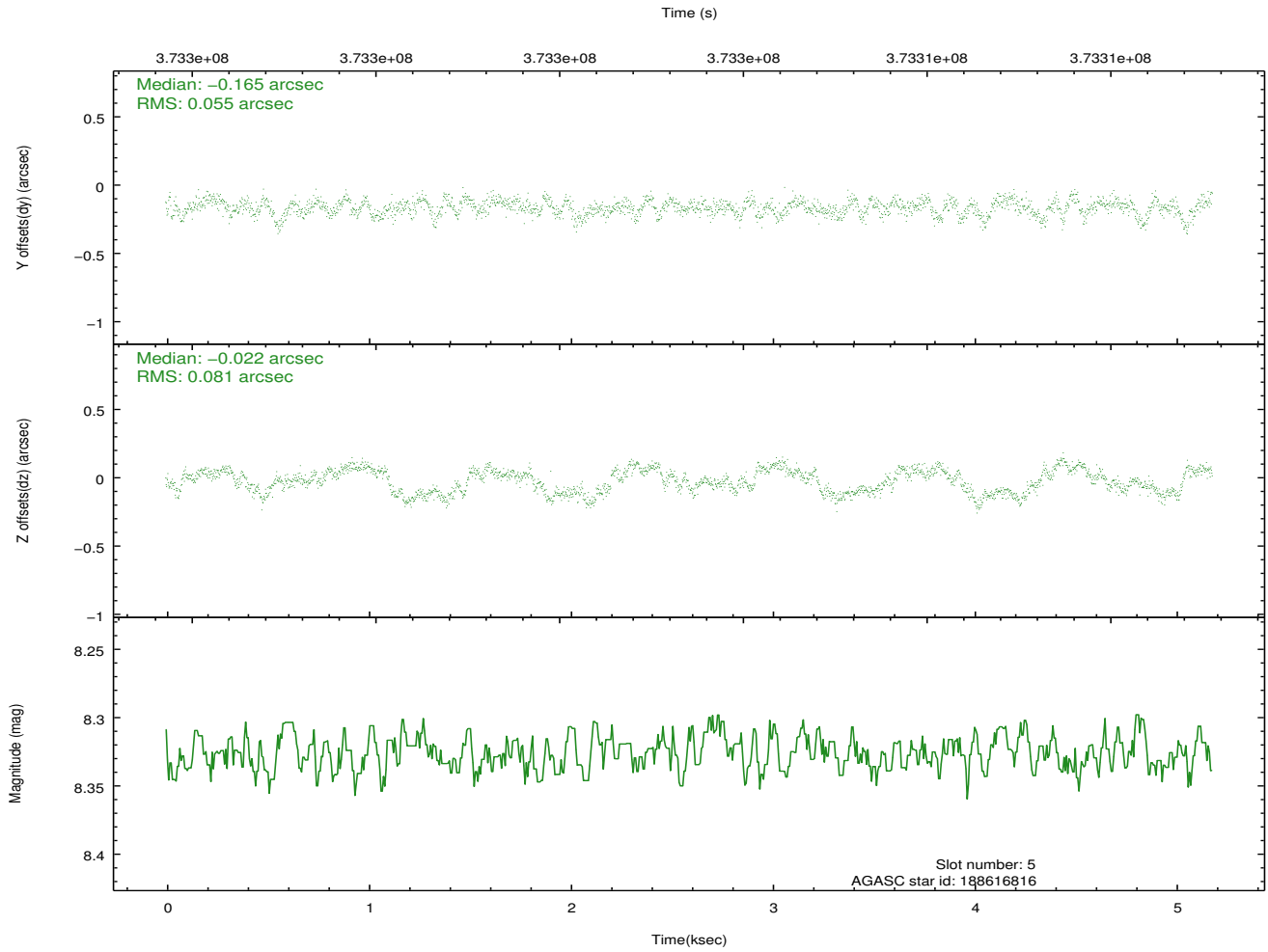
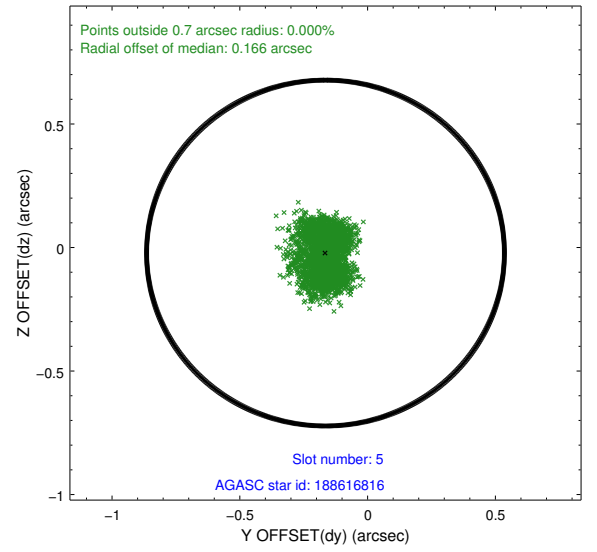
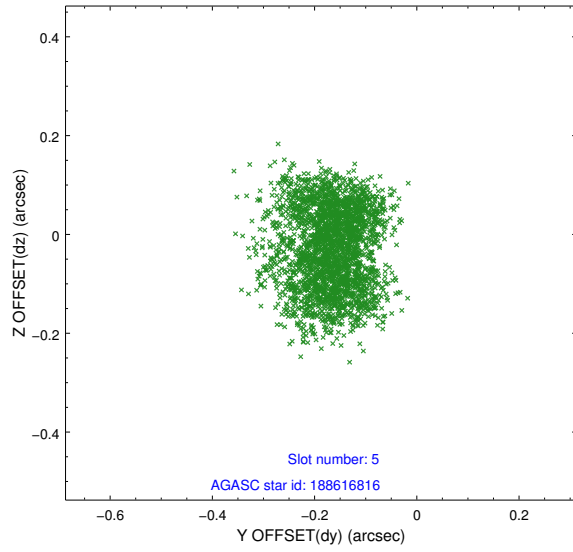
2.4.1 Slot 3



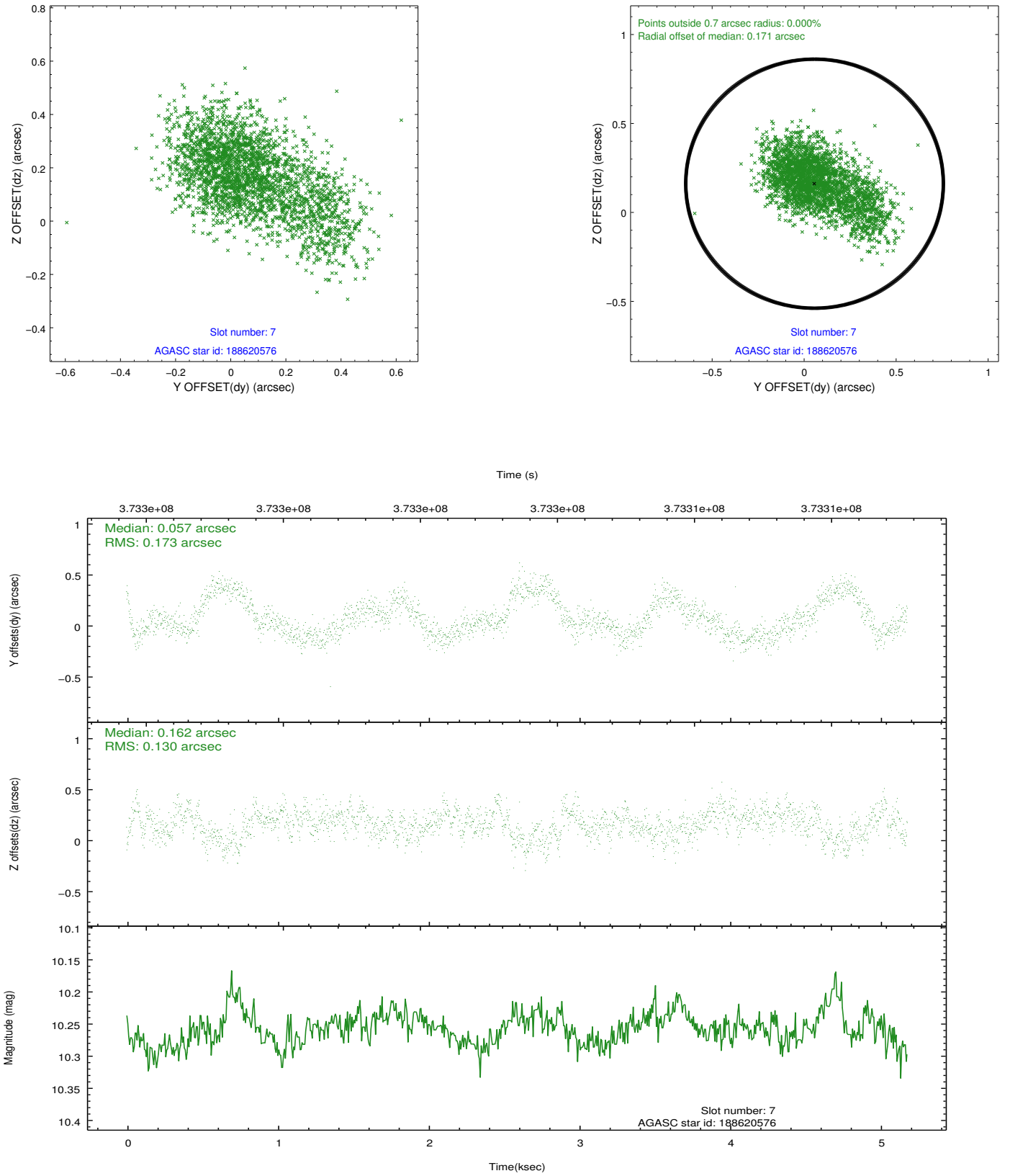
2.4.2 Slot 4



2.4.3 Slot 5

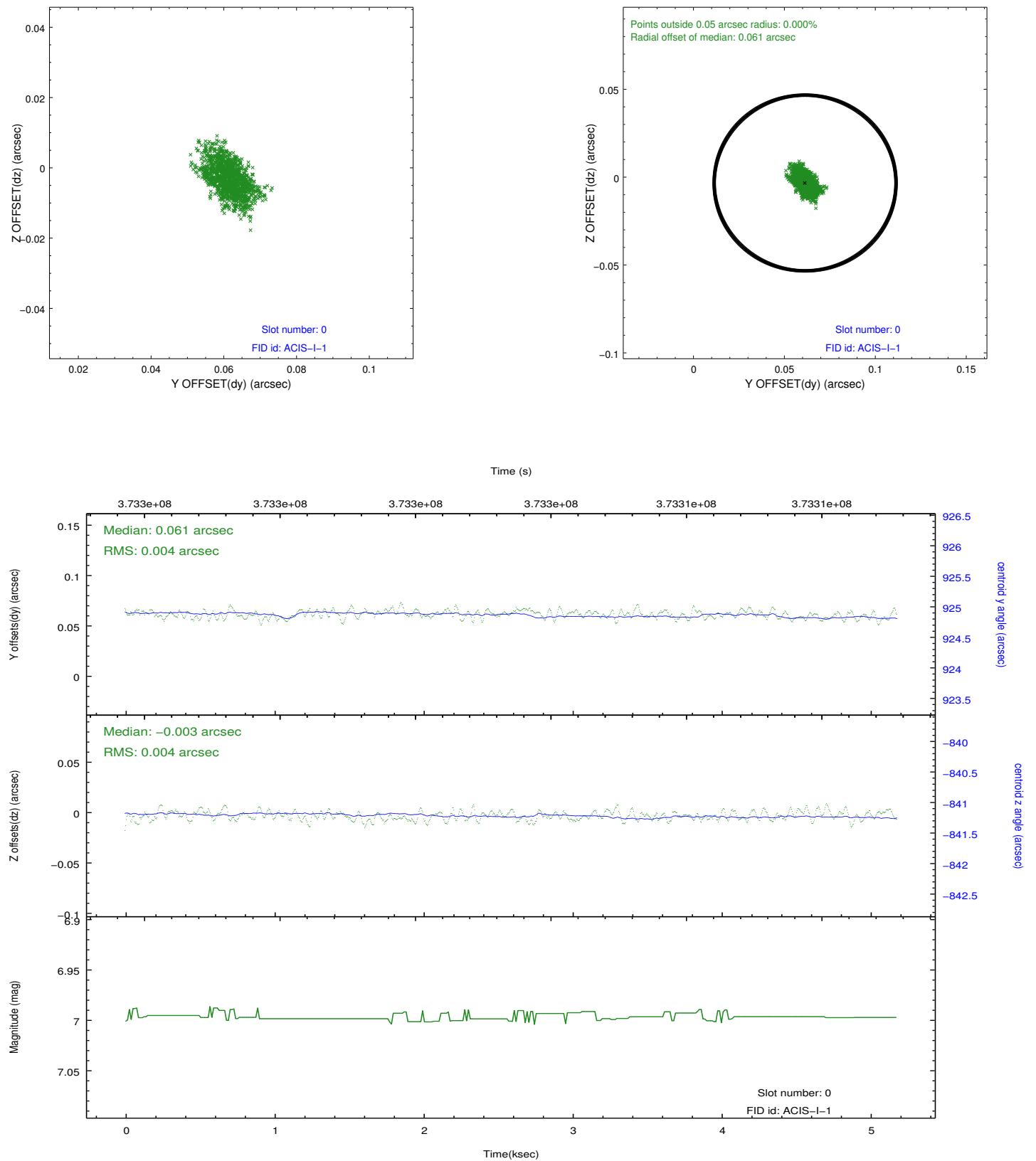


2.4.4 Slot 7

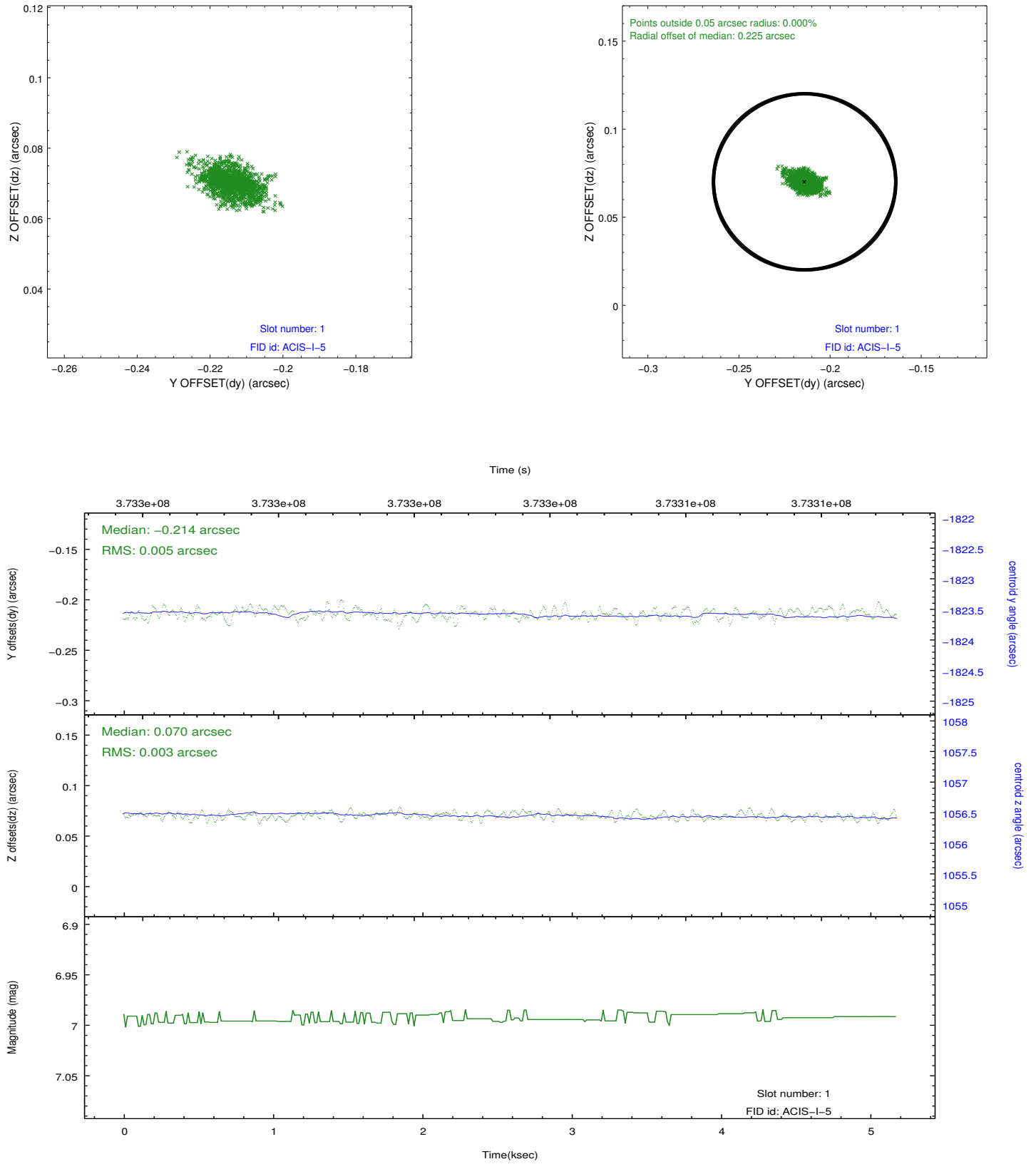


2.5 FID Slots

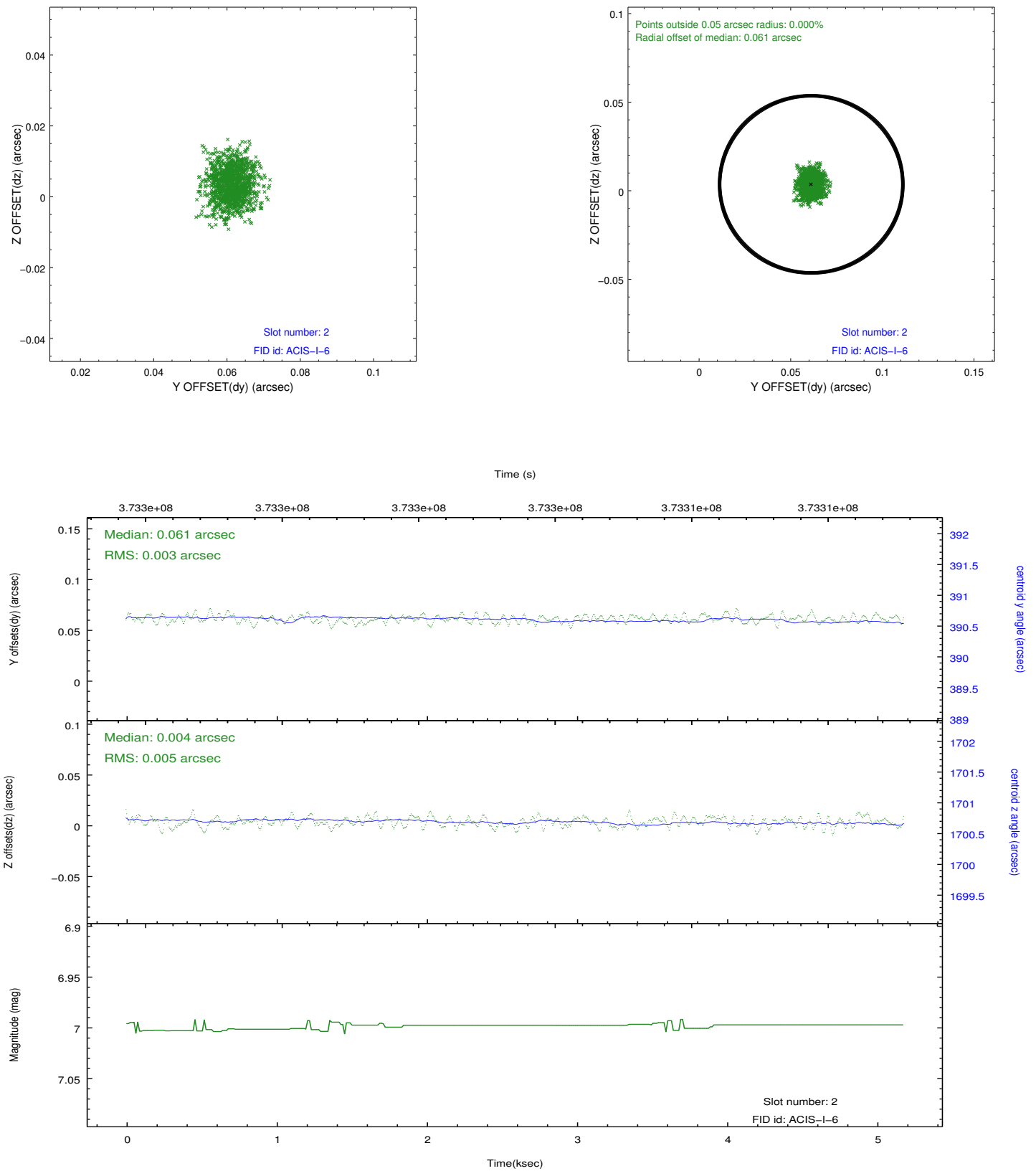
2.5.1 Slot 0



2.5.2 Slot 1



2.5.3 Slot 2



A Summary

A.1 Status

V&V Scientist	Jen Lauer
V&V Date (YYYY-MM-DD)	2012.06.21
V&V Edition	1
V&V Disposition and Status	OK
V&V Charge Time	5.068459048748

A.2 Comments

The guide star in slot 6 was removed from the aspect solution due to poor data quality. The aspect solution is improved by the removal of this guide star from the solution.