

# V&V Reference Report

## L2 ASCDS Version : 8.4.5

Observation 11706 - L2 Version 2  
Chandra X-Ray Center

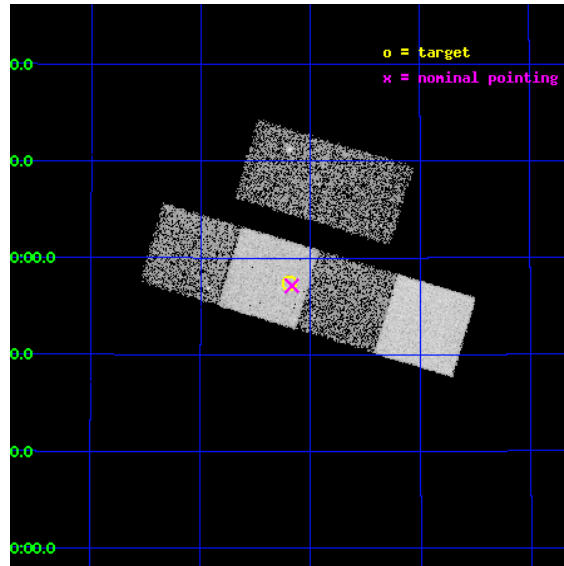
L2 Processing Date : Jun 28 2012

## Contents

<b>1</b>	<b>Front</b>	<b>2</b>
<b>2</b>	<b>OBI</b>	<b>3</b>
2.1	OBI . . . . .	3
2.1.1	Images . . . . .	3
2.1.2	Bias . . . . .	3
2.1.3	Parameters . . . . .	4
2.1.4	Events . . . . .	4
2.2	Compared Parameters . . . . .	5
2.3	Aspect . . . . .	6
2.4	Star Slots . . . . .	9
2.4.1	Slot 3 . . . . .	9
2.4.2	Slot 4 . . . . .	10
2.4.3	Slot 5 . . . . .	11
2.4.4	Slot 6 . . . . .	12
2.4.5	Slot 7 . . . . .	13
2.5	FID Slots . . . . .	14
2.5.1	Slot 0 . . . . .	14
2.5.2	Slot 1 . . . . .	15
2.5.3	Slot 2 . . . . .	16
<b>A</b>	<b>Summary</b>	<b>17</b>
A.1	Status . . . . .	17
A.2	Comments . . . . .	17

# 1 Front

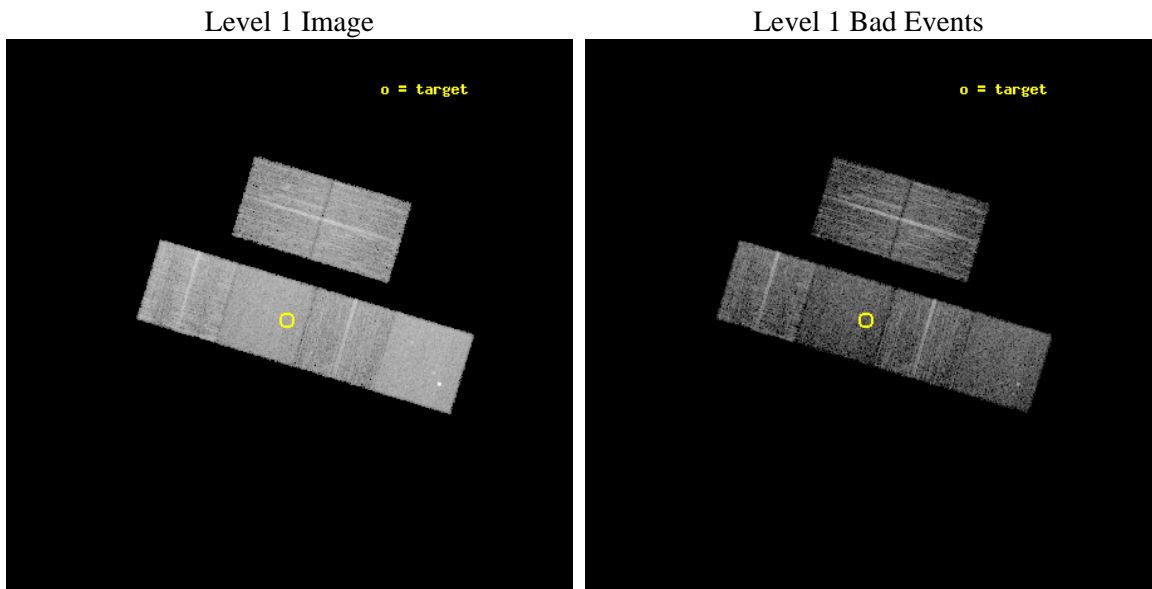
seq_num	702291	Sequence number
obs_id	11706	Observation id
title	After the Fall: Fading AGN in Post-starburst Galaxies	Proposal tit
observer	Dr. Christy Tremonti	Principal investigator
object	SDSS J155811.24+395720.8	Source name
dtcycle	0	&#160
cycle	P	events from which exps? Prim/Second/Both
ra_targ	239.546667	Observer's specified target RA [deg]
dec_targ	39.955778	Observer's specified target Dec [deg]
ra_nom	239.54233081406	Nominal RA [deg]
dec_nom	39.952105919847	Nominal Dec [deg]
roll_nom	196.68343402027	Nominal Roll [deg]
revision	2	Processing version of data
ontime	6217.5999768972	Sum of GTIs [s]
livetime	6138.8689822005	Livetime [s]
ontime2	6217.5999768972	Sum of GTIs [s]
ontime3	6217.5999768972	Sum of GTIs [s]
ontime5	6217.5999768972	Sum of GTIs [s]
ontime6	6214.3589766622	Sum of GTIs [s]
ontime7	6217.5999768972	Sum of GTIs [s]
ontime8	6217.5999768972	Sum of GTIs [s]
l2events	75939	Number of level 2 events



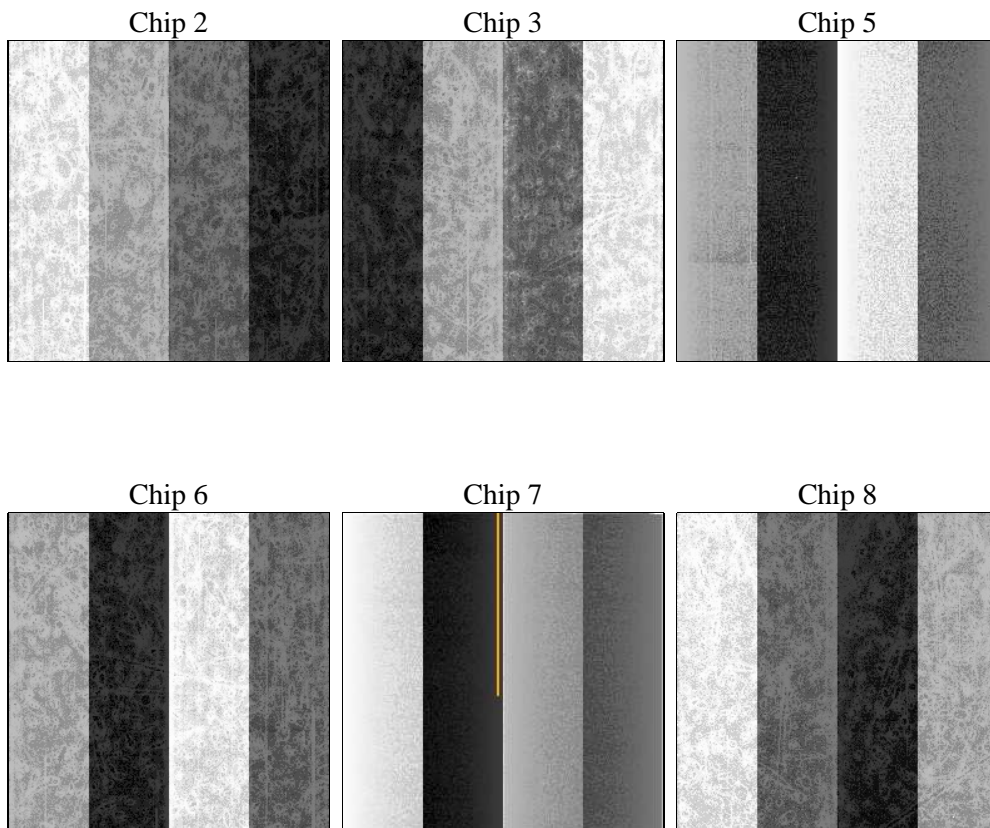
## 2 OBI

### 2.1 OBI

#### 2.1.1 Images



#### 2.1.2 Bias



### 2.1.3 Parameters

obi_num	0	Obi number	sched_exp_time	6170.000000	[s] Scheduled observation exposure time
ascdsver	8.4.5	Processing system revision	ontime	6217.5999768972	Sum of GTIs [s]
caldbver	4.5.0	&#160	ontime2	6217.5999768972	Sum of GTIs [s]
date	2012-06-28T04:01:39	Date and time of file creation	ontime3	6217.5999768972	Sum of GTIs [s]
revision	2	Processing version of data	ontime5	6217.5999768972	Sum of GTIs [s]
			ontime6	6214.3589766622	Sum of GTIs [s]
			ontime7	6217.5999768972	Sum of GTIs [s]
			ontime8	6217.5999768972	Sum of GTIs [s]
			l1events	328226	Number of level 1 events

### 2.1.4 Events

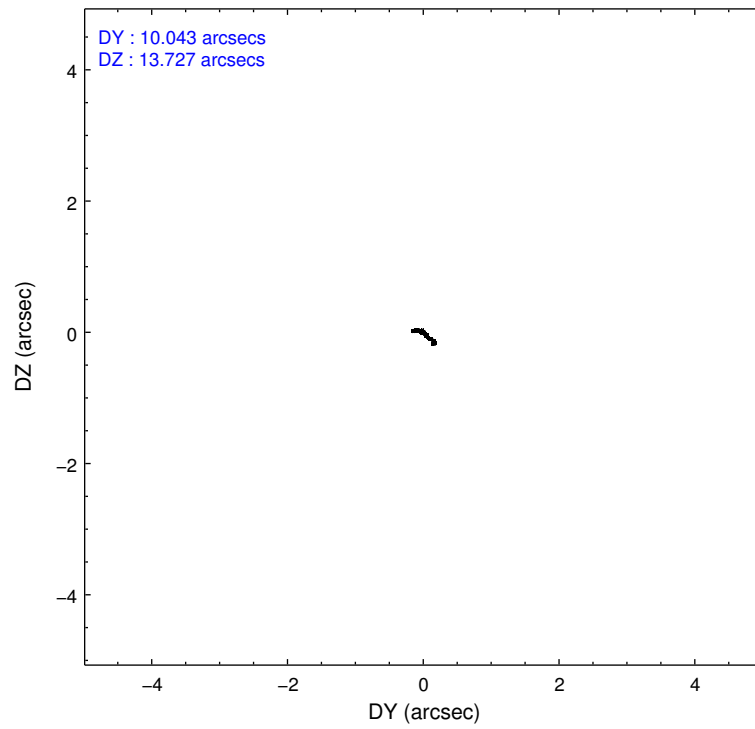
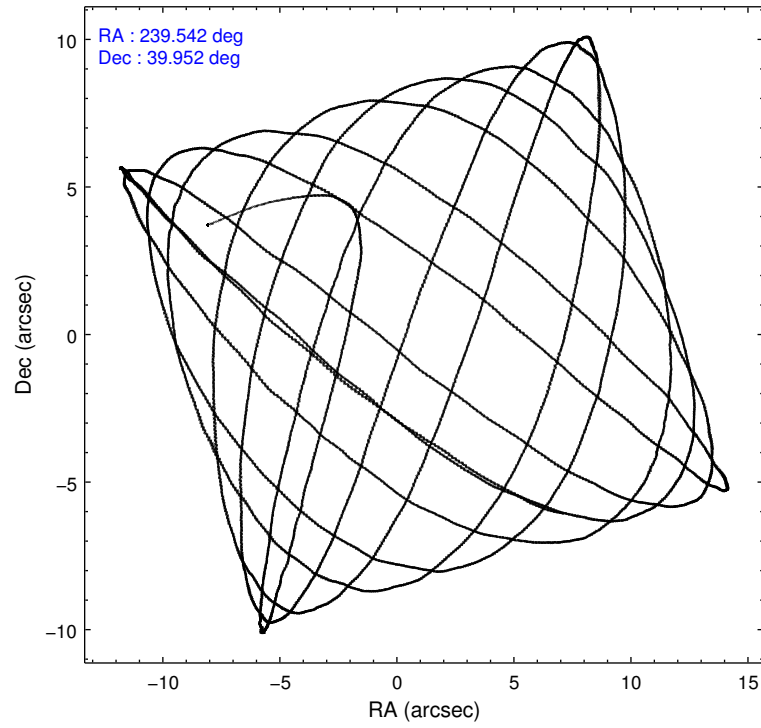
	ccd 2	ccd 3	ccd 5	ccd 6	ccd 7	ccd 8		ccd 2	ccd 3	ccd 5	ccd 6	ccd 7	ccd 8
level 1 events	49917	43760	70244	46004	56924	61377	grade 0 events	1780	1820	2892	1881	2318	4880
rejected events	44923	38727	35487	40705	31447	45382		3%	4%	4%	4%	4%	7%
rejected %	89%	88%	50%	88%	55%	73%	grade 1 events	25	25	136	34	71	57
								0%	0%	0%	0%	0%	0%
							grade 2 events	1244	1049	11139	1205	5219	3648
								2%	2%	15%	2%	9%	5%
							grade 3 events	521	556	1407	536	2256	1678
								1%	1%	2%	1%	3%	2%
							grade 4 events	518	553	1302	538	2257	1577
								1%	1%	1%	1%	3%	2%
							grade 5 events	1858	2028	5487	2157	6018	2994
								3%	4%	7%	4%	10%	4%
							grade 6 events	934	1057	18030	1142	13439	4216
								1%	2%	25%	2%	23%	6%
							grade 7 events	43037	36672	29851	38511	25346	42327
								86%	83%	42%	83%	44%	68%

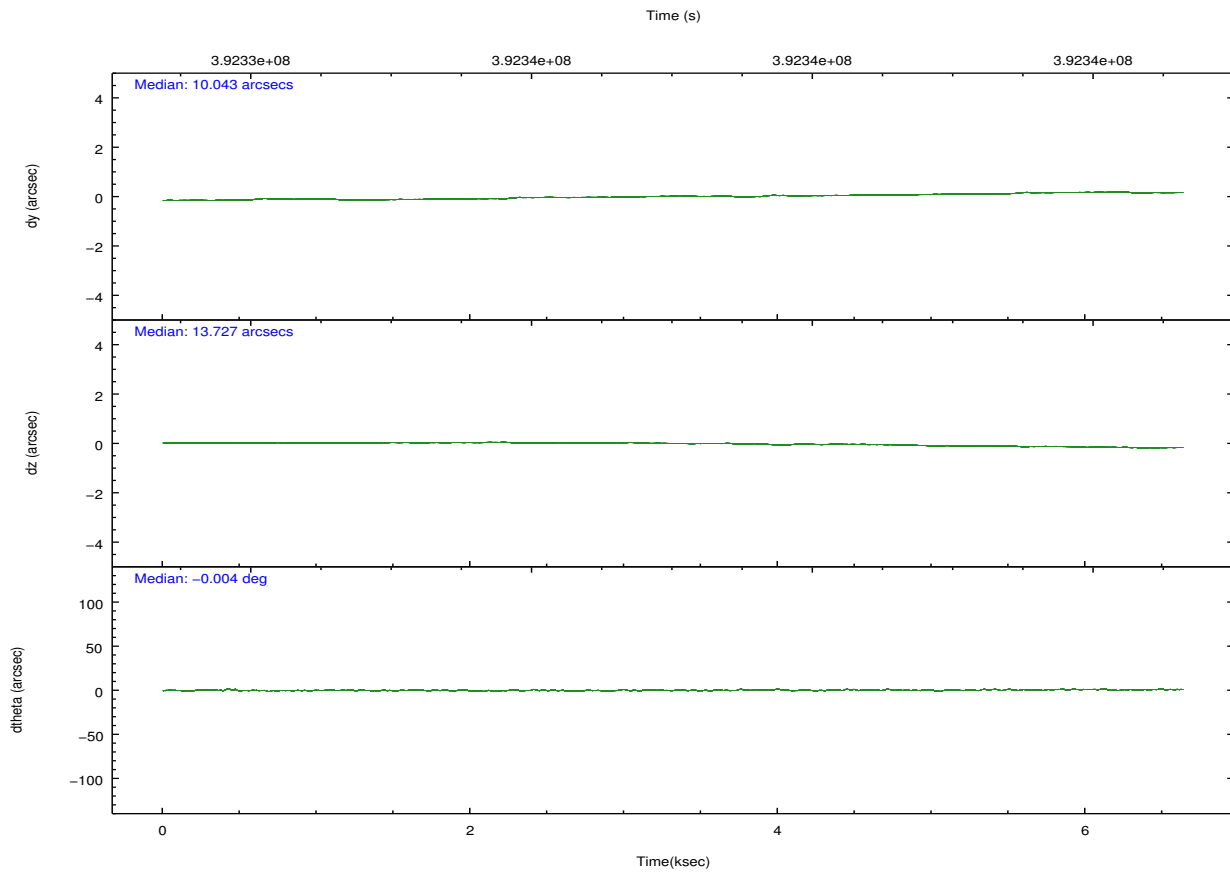
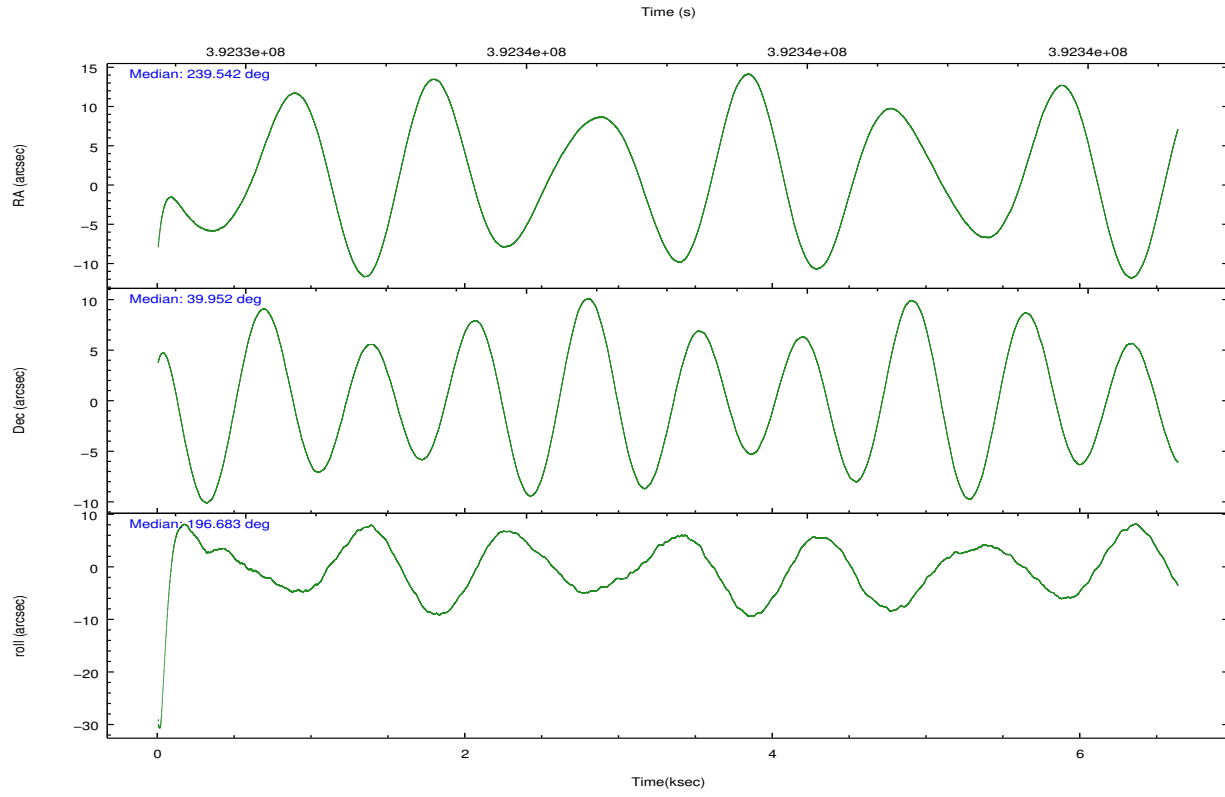


## 2.2 Compared Parameters

Parameter	Planned	Actual	Parameter	Planned	Actual
Instrument	ACIS	ACIS	Obspar format version number	7	7
Detector	ACIS-235678	ACIS-235678	Obspar file type	PREDICTED	ACTUAL
Grating	NONE	NONE	Obspar update status	NONE	UPDATED
Data mode	VFAINT	VFAINT	CCD I0 on	N	N
Observation mode	POINTING	POINTING	CCD I1 on	N	N
[deg] Pointing RA	239.566583	239.5423308140594	CCD I2 on	O1	Y
[deg] Pointing Dec	39.972296	39.95210591984679	CCD I3 on	O2	Y
[deg] Pointing Roll	196.511304	196.6834340202734	CCD S0 on	N	N
[mm] SIM focus pos	-0.684267	-0.6828225247311905	CCD S1 on	O4	Y
[mm] SIM defocus	0	0.001444936568705701	CCD S2 on	O5	Y
[mm] SIM translation stage pos	-190.132523	-190.1400660498719	CCD S3 on	Y	Y
[mm] SIM translation stage offset	0	0.00754346686406393	CCD S4 on	O3	Y
[s] Observation start time (MET)	392334164.184000	392333012.01672	CCD S5 on	N	N
Observation start date	2010-06-07T21:41:38	2010-06-07T21:23:32	Number of optional ACIS chips dropped	0	0
[s] Observation end time (MET)	392340334.184000	392341148.46713	On-chip summing requested	N	N
Observation end date	2010-06-07T23:24:28	2010-06-07T23:39:08	Subarray requested	NONE	NONE
Read mode	TIMED	TIMED	Alternating exposures requested	N	N
			[s] Primary exposure time	0.000000	3.2

## 2.3 Aspect



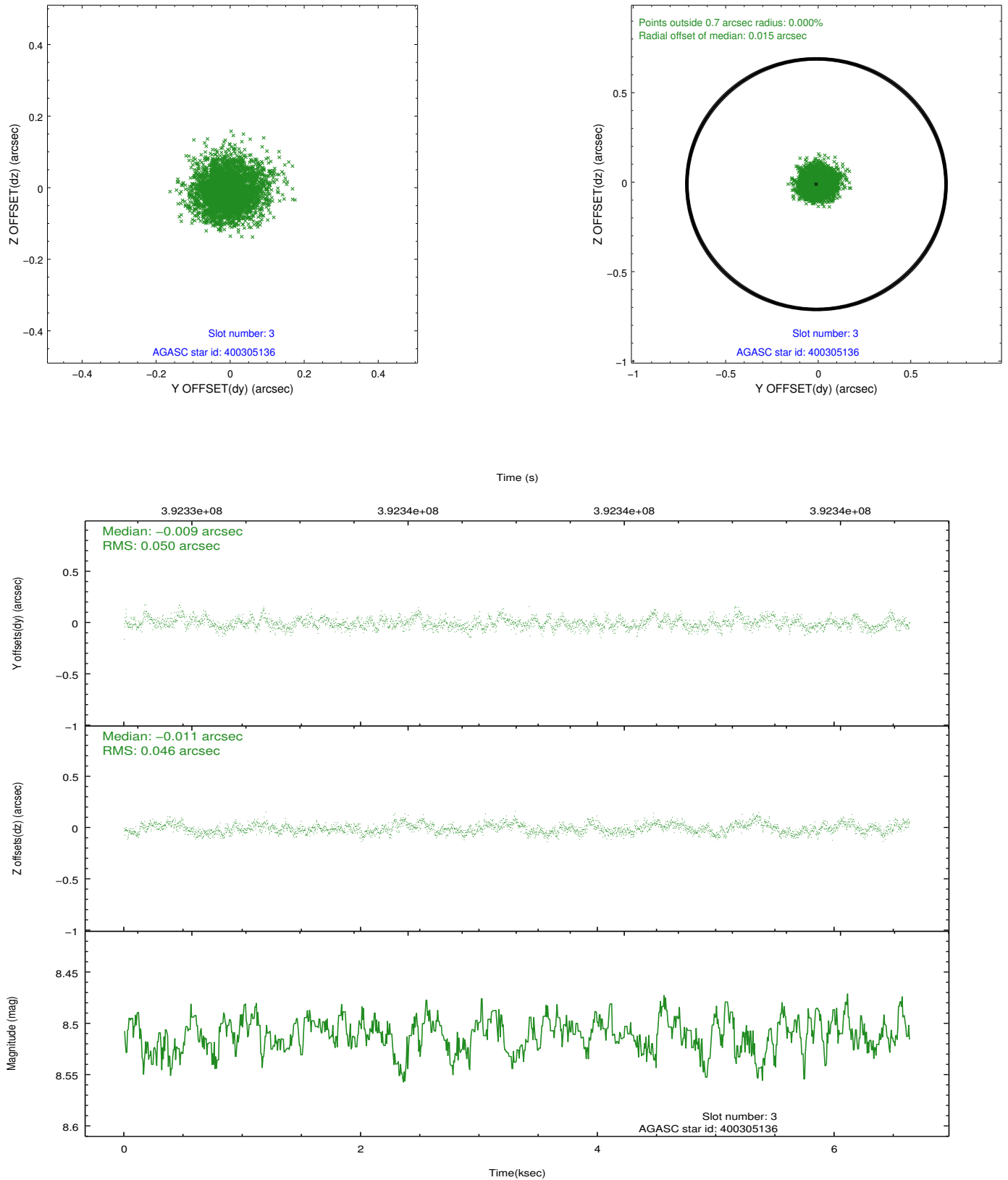


### Slot Statistics

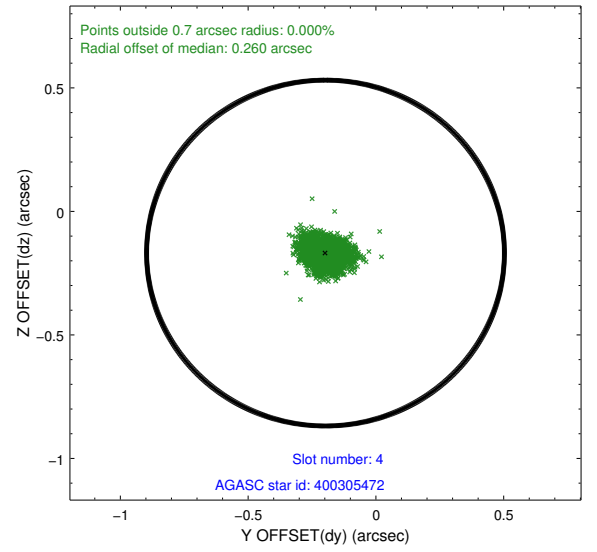
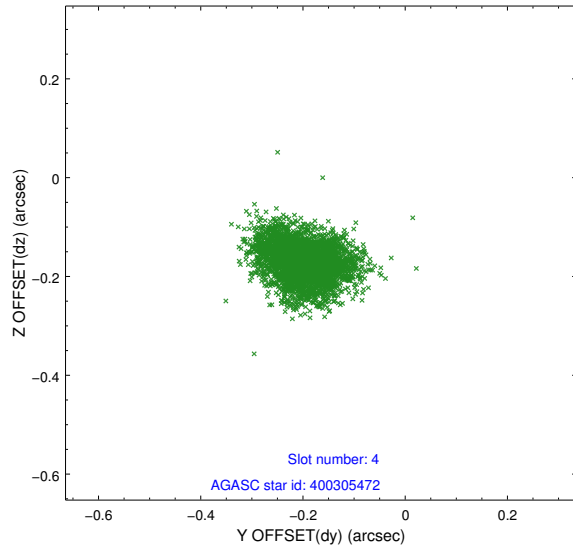
slot	status	id	mag	n_pts	med_dy	med_dz	dr1	dr2	ra	dec	mean_y	mean_z
0	FID	ACIS-S-1	6.99	1618	0.067	-0.013	0.008	0.013	0.000000	0.000000	933.19	-1730.70
1	FID	ACIS-S-5	7.02	1617	-0.158	0.041	0.007	0.013	0.000000	0.000000	-1815.50	166.05
2	FID	ACIS-S-6	7.13	1618	0.070	-0.015	0.008	0.013	0.000000	0.000000	397.85	810.91
3	GUIDE	400305136	8.51	3237	-0.009	-0.011	0.072	0.116	238.778843	39.782745	2280.54	25.81
4	GUIDE	400305472	8.03	3237	-0.197	-0.169	0.064	0.100	239.029539	39.429400	1986.41	1445.14
5	GUIDE	400694712	8.78	3236	0.072	0.098	0.082	0.130	239.852587	40.150484	-936.43	-392.23
6	GUIDE	400696600	8.92	3234	0.086	0.060	0.072	0.116	239.032431	40.105506	1272.19	-881.79
7	GUIDE	401617272	9.39	3234	0.047	0.023	0.089	0.146	240.254334	40.294545	-2141.80	-582.95

## 2.4 Star Slots

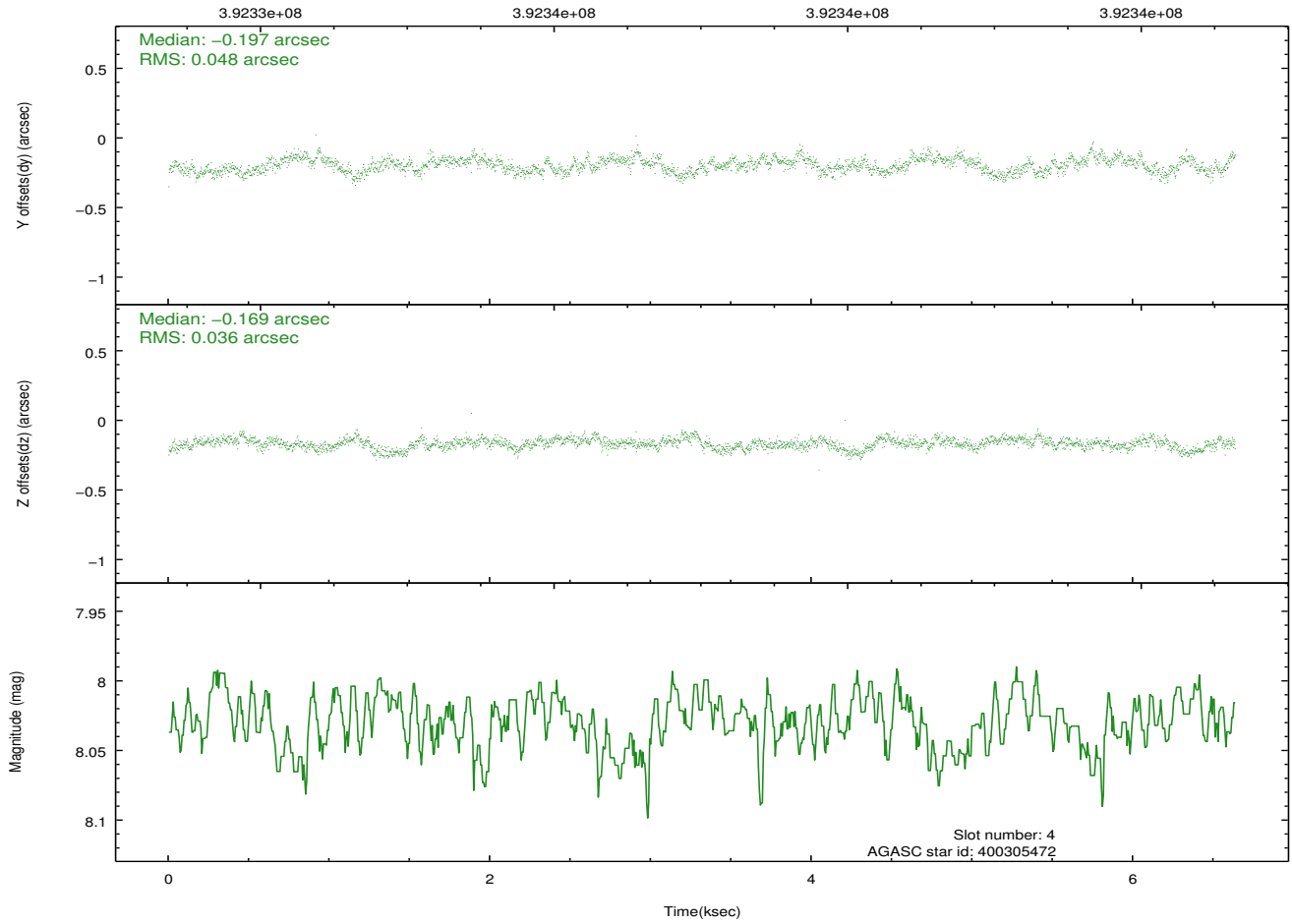
### 2.4.1 Slot 3



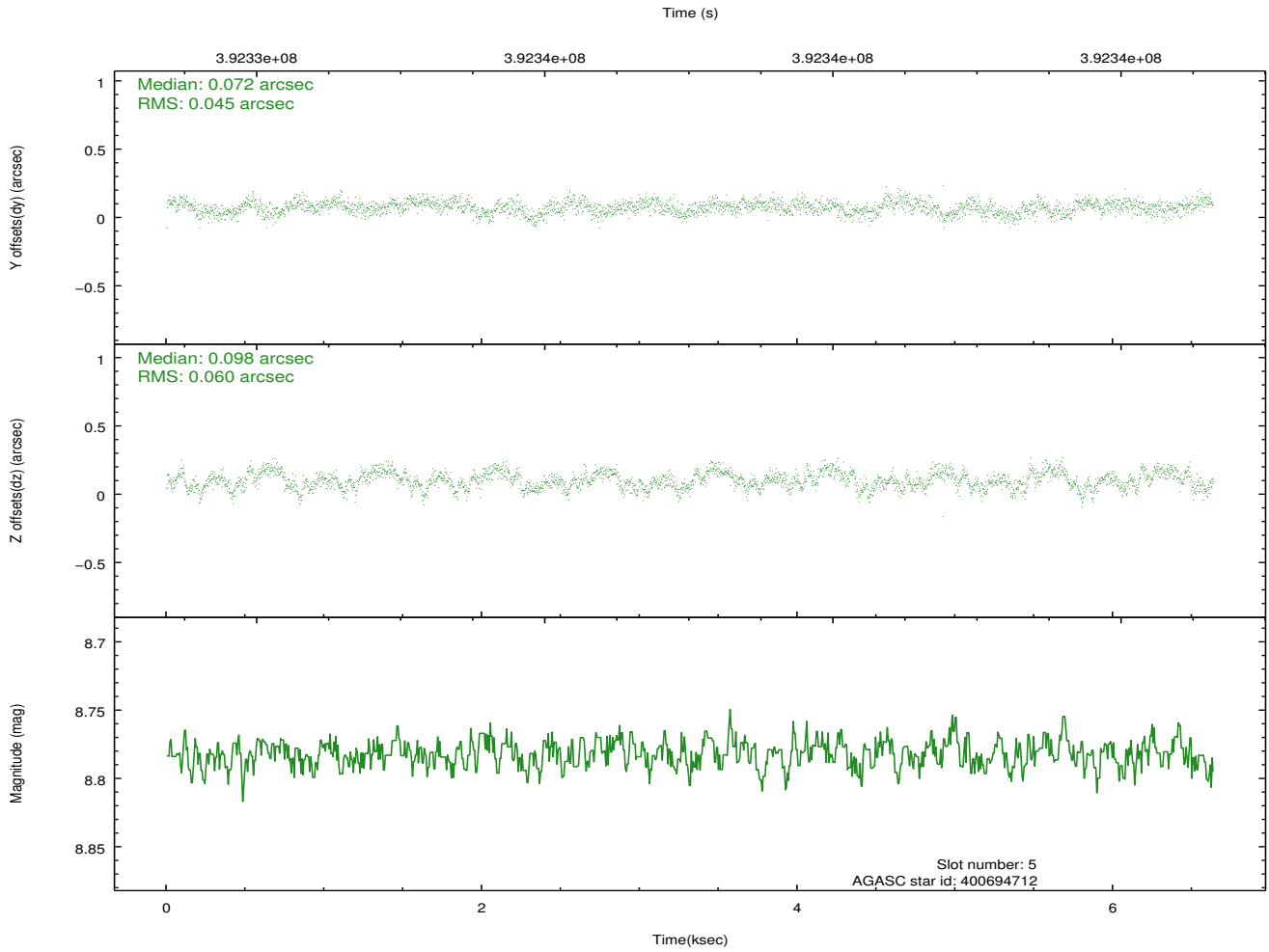
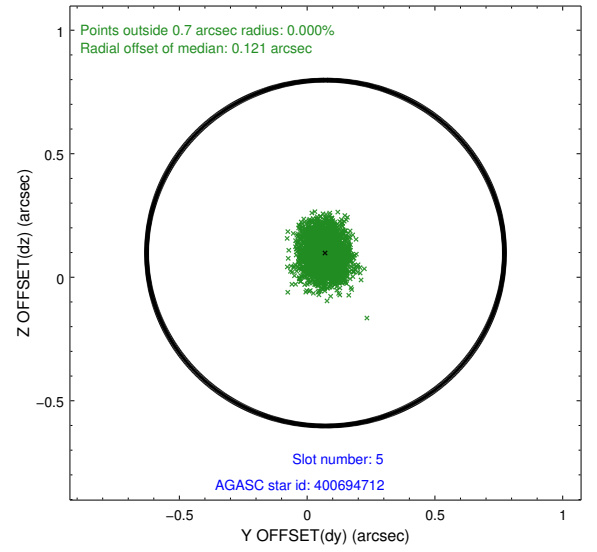
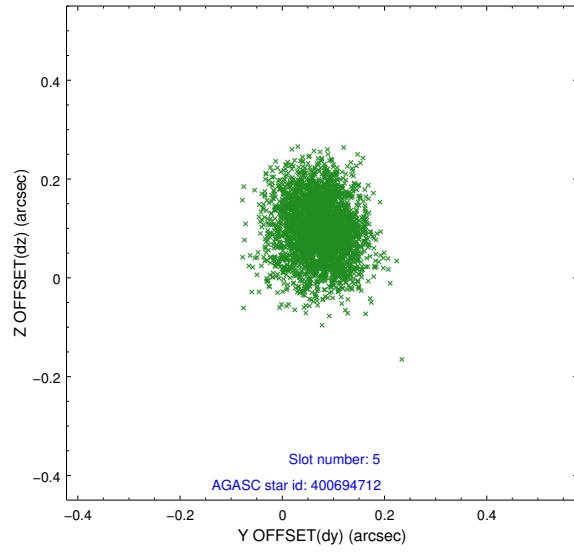
## 2.4.2 Slot 4



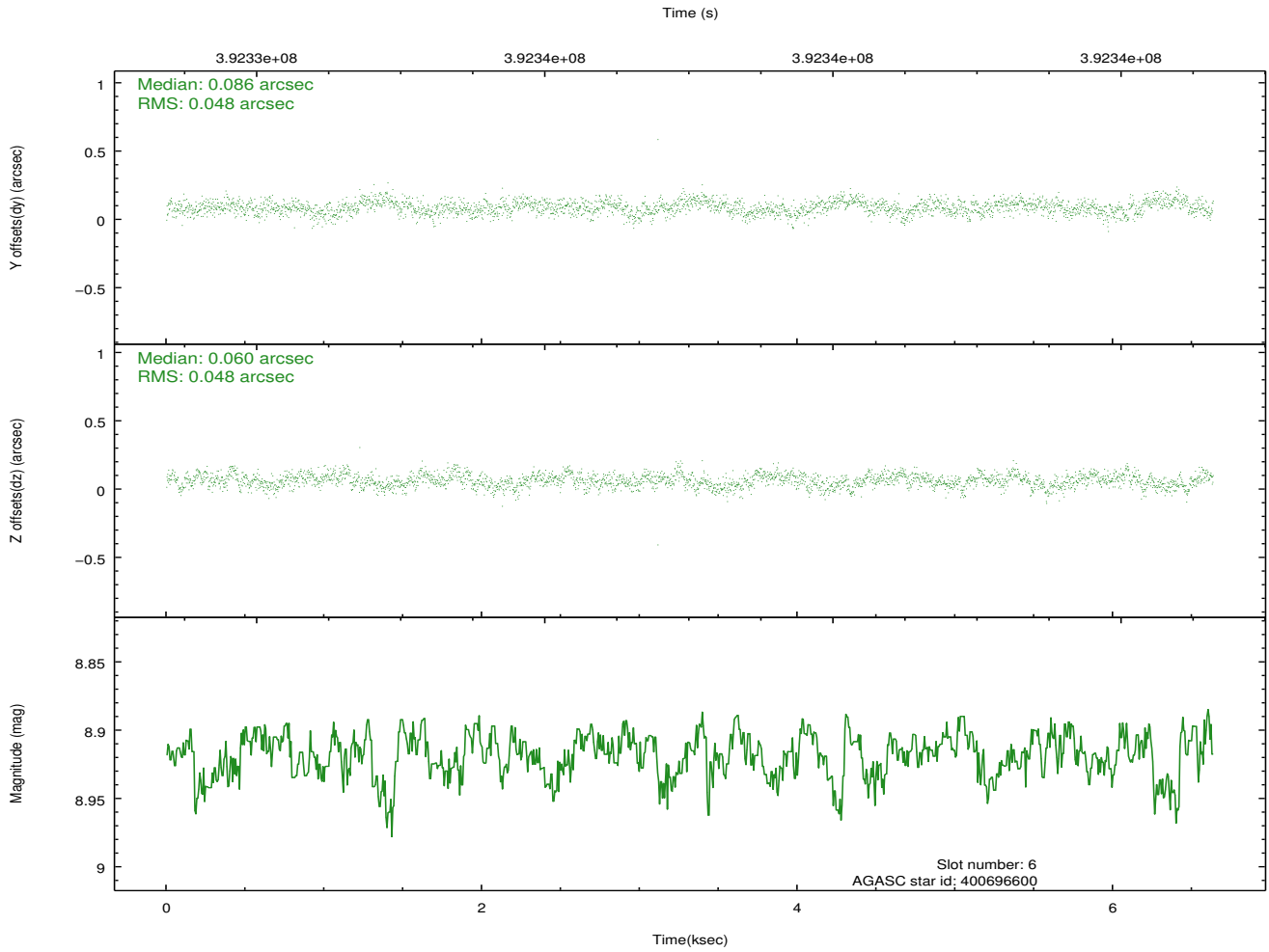
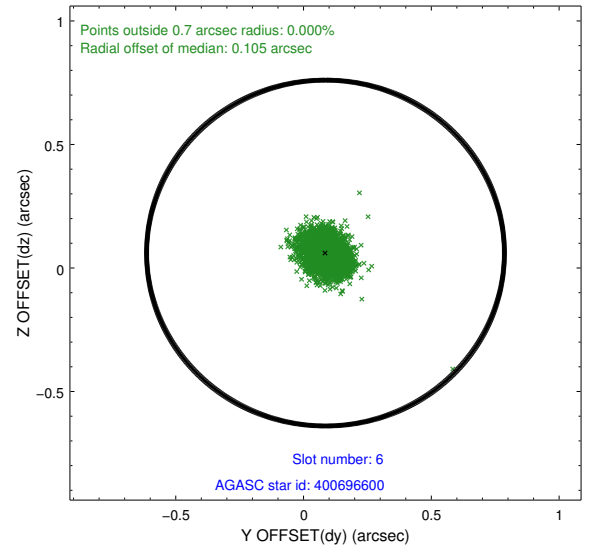
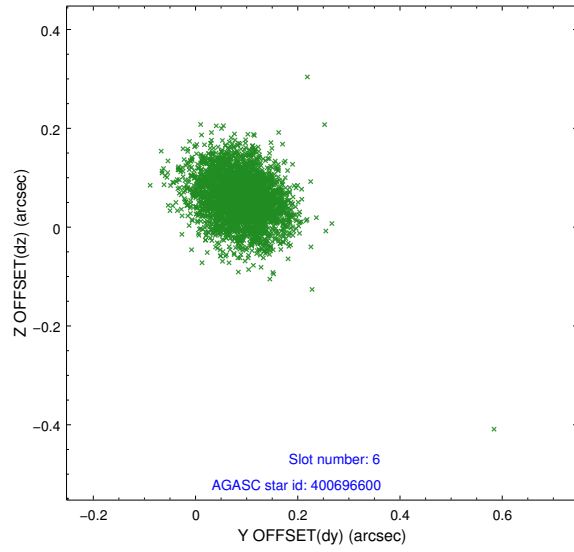
Time (s)



### 2.4.3 Slot 5

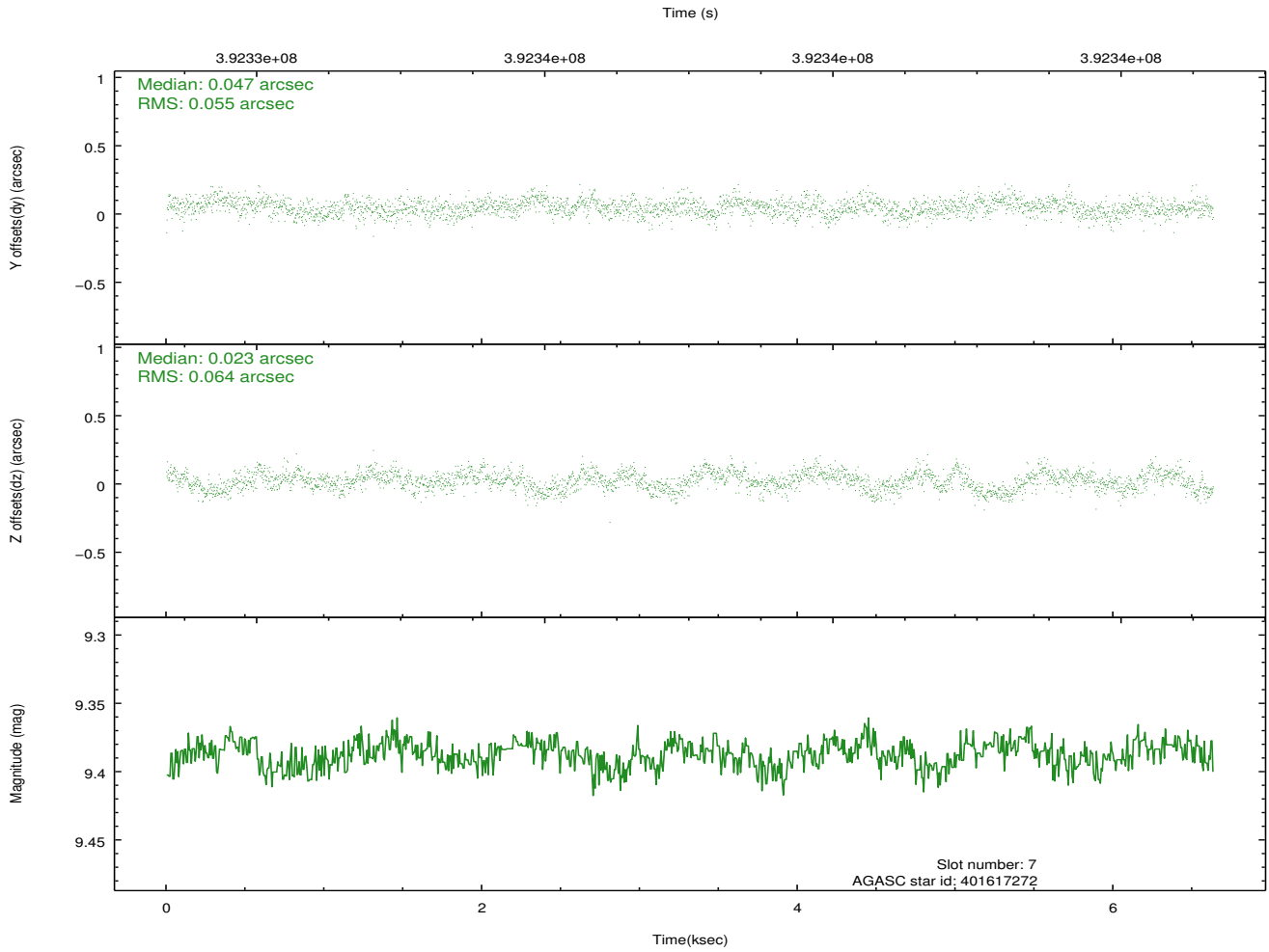
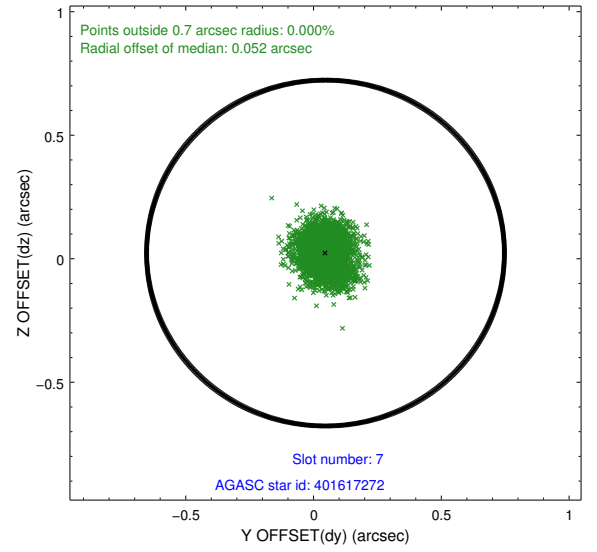
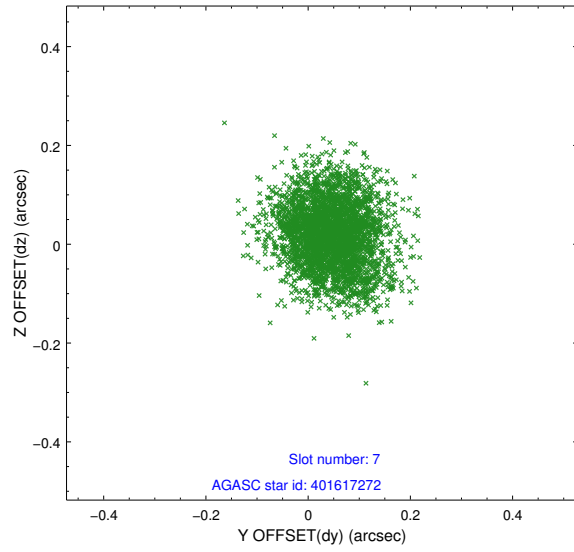


## 2.4.4 Slot 6



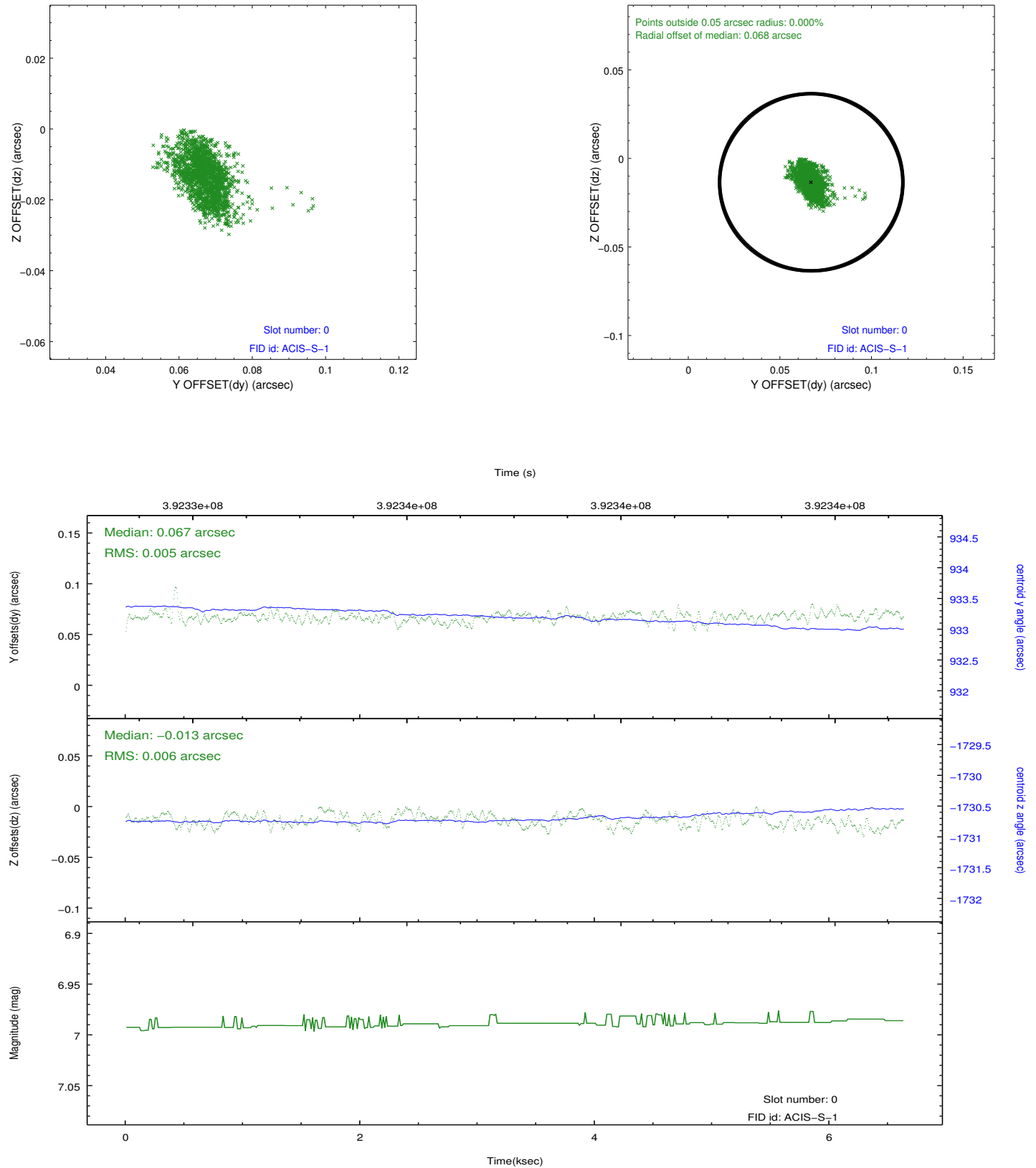


## 2.4.5 Slot 7

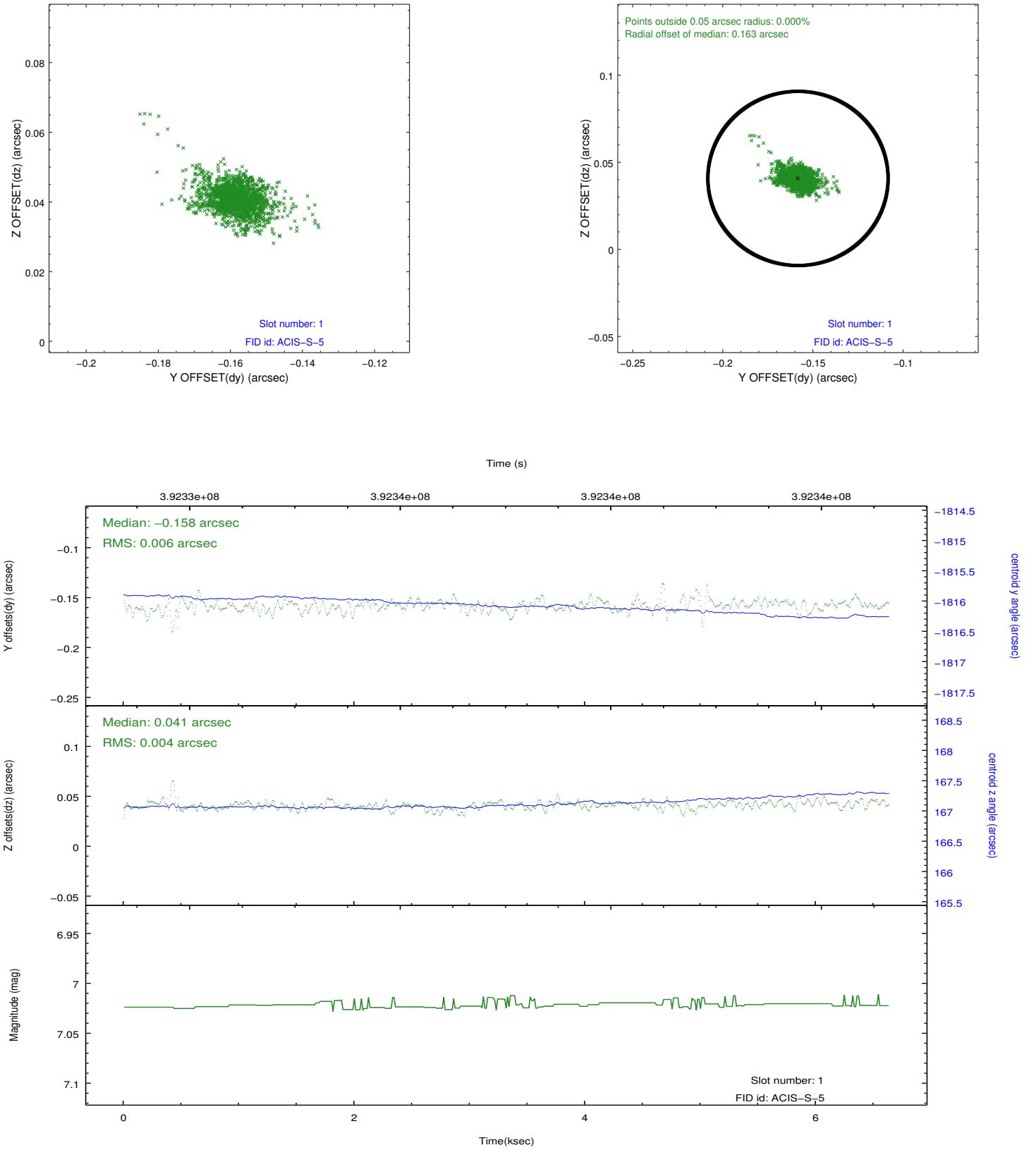


## 2.5 FID Slots

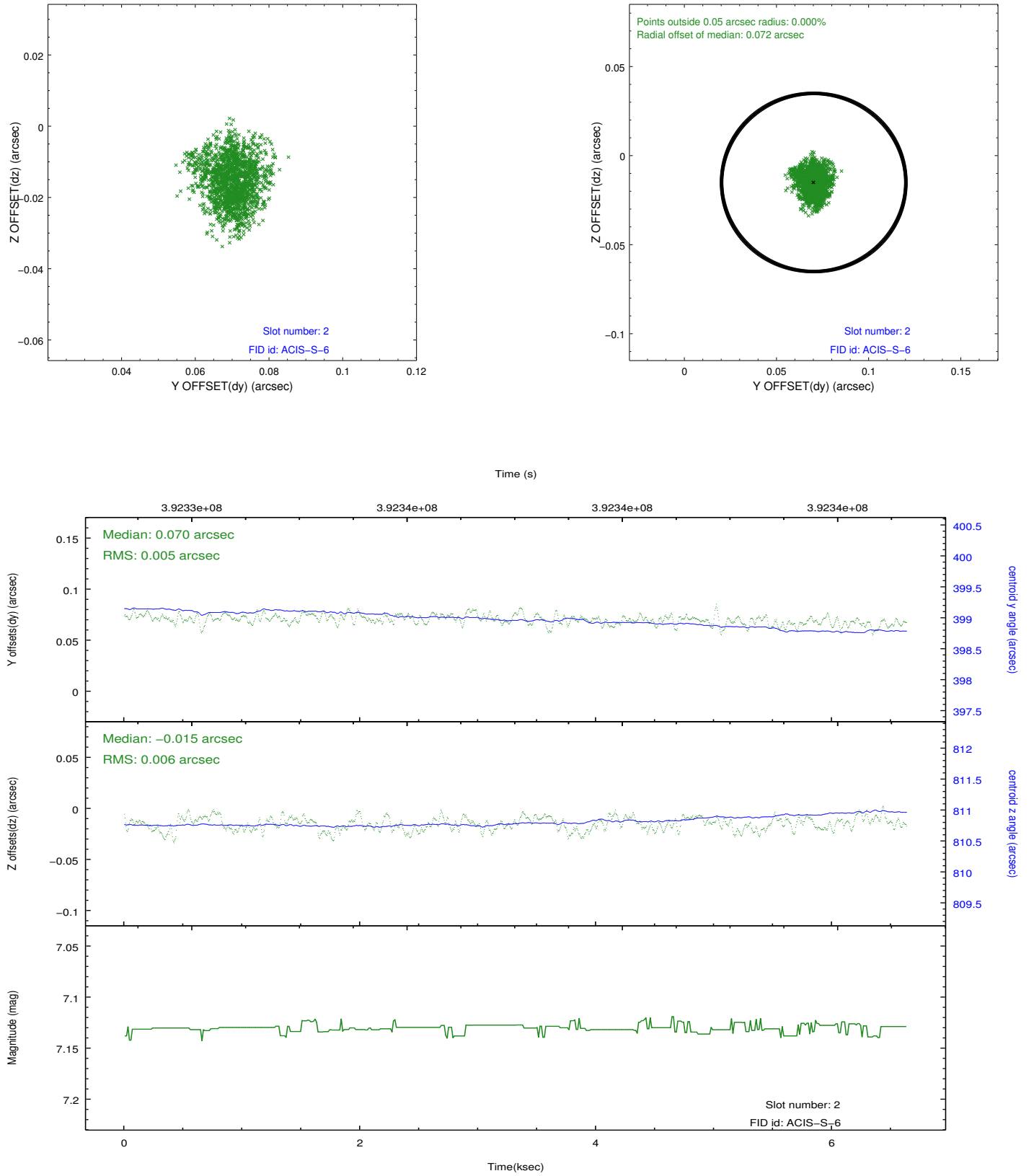
### 2.5.1 Slot 0



## 2.5.2 Slot 1



### 2.5.3 Slot 2



## A Summary

### A.1 Status

V&V Scientist	Jen Lauer
V&V Date (YYYY-MM-DD)	2012.07.03
V&V Edition	1
V&V Disposition and Status	OK
V&V Charge Time	6.2175999768972

### A.2 Comments

Joint proposal: HST