

V&V Reference Report

L2 ASCDS Version : 8.4.5

Observation 11672 - L2 Version 2
Chandra X-Ray Center

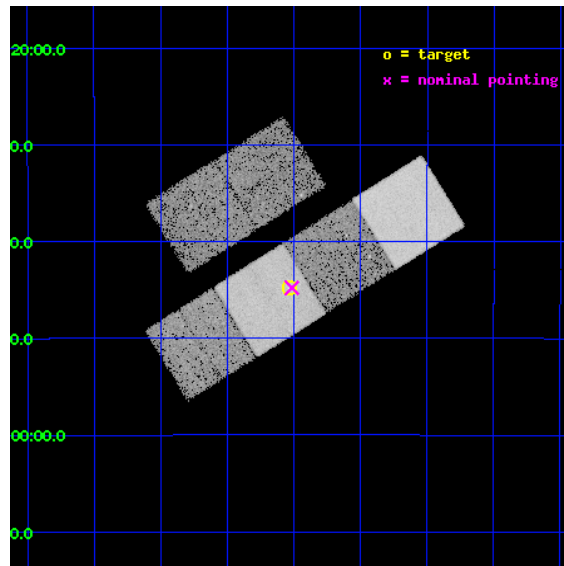
L2 Processing Date : Jun 30 2012

Contents

1	Front	2
2	OBI	3
2.1	OBI	3
2.1.1	Images	3
2.1.2	Bias	3
2.1.3	Parameters	4
2.1.4	Events	4
2.2	Compared Parameters	5
2.3	Aspect	6
2.4	Star Slots	9
2.4.1	Slot 3	9
2.4.2	Slot 4	10
2.4.3	Slot 5	11
2.4.4	Slot 6	12
2.4.5	Slot 7	13
2.5	FID Slots	14
2.5.1	Slot 0	14
2.5.2	Slot 1	15
2.5.3	Slot 2	16
A	Summary	17
A.1	Status	17
A.2	Comments	17

1 Front

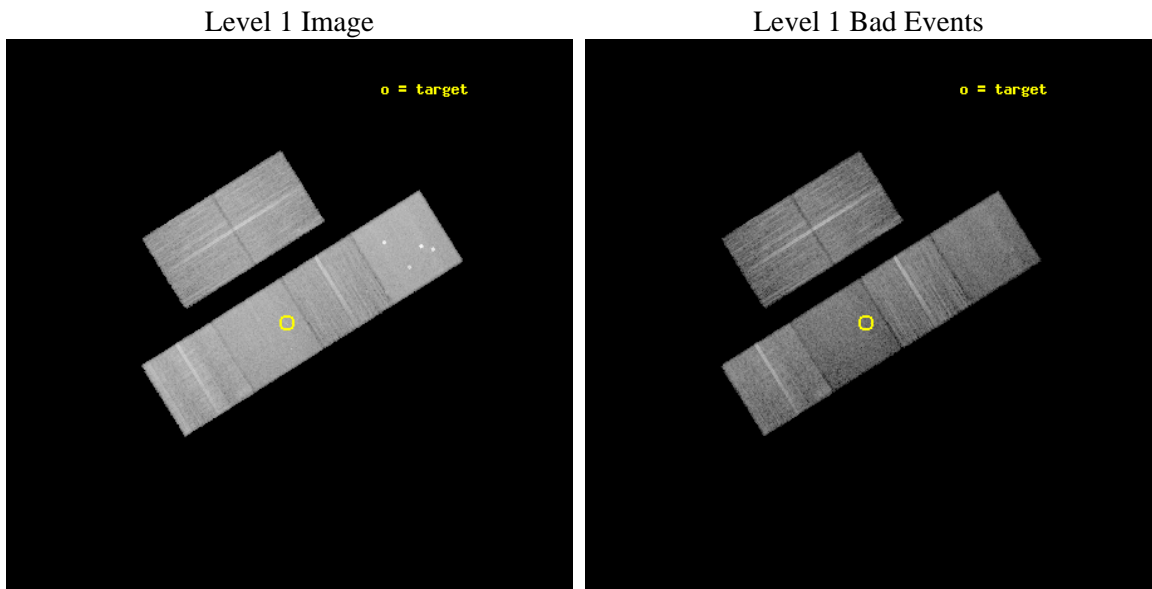
seq_num	702258	Sequence number
obs_id	11672	Observation id
title	Investigating the Nuclear Activity of Barred and Unbarred Spiral Galaxies	Proposal title
observer	Dr Leigh Jenkins	Principal investigator
object	NGC 2179	Source name
dtcycle	0	
cycle	P	events from which exps? Prim/Second/Both
ra_targ	92.00925	Observer's specified target RA [deg]
dec_targ	-21.746694	Observer's specified target Dec [deg]
ra_nom	92.004014365108	Nominal RA [deg]
dec_nom	-21.746652298941	Nominal Dec [deg]
roll_nom	148.00368924587	Nominal Roll [deg]
revision	2	Processing version of data
ontime	15048.518442988	Sum of GTIs [s]
liveltime	14857.965041333	Livetime [s]
ontime2	15048.559482992	Sum of GTIs [s]
ontime3	15048.395322978	Sum of GTIs [s]
ontime5	15048.477402985	Sum of GTIs [s]
ontime6	15048.436362982	Sum of GTIs [s]
ontime7	15048.518442988	Sum of GTIs [s]
ontime8	15048.354282975	Sum of GTIs [s]
l2events	185129	Number of level 2 events



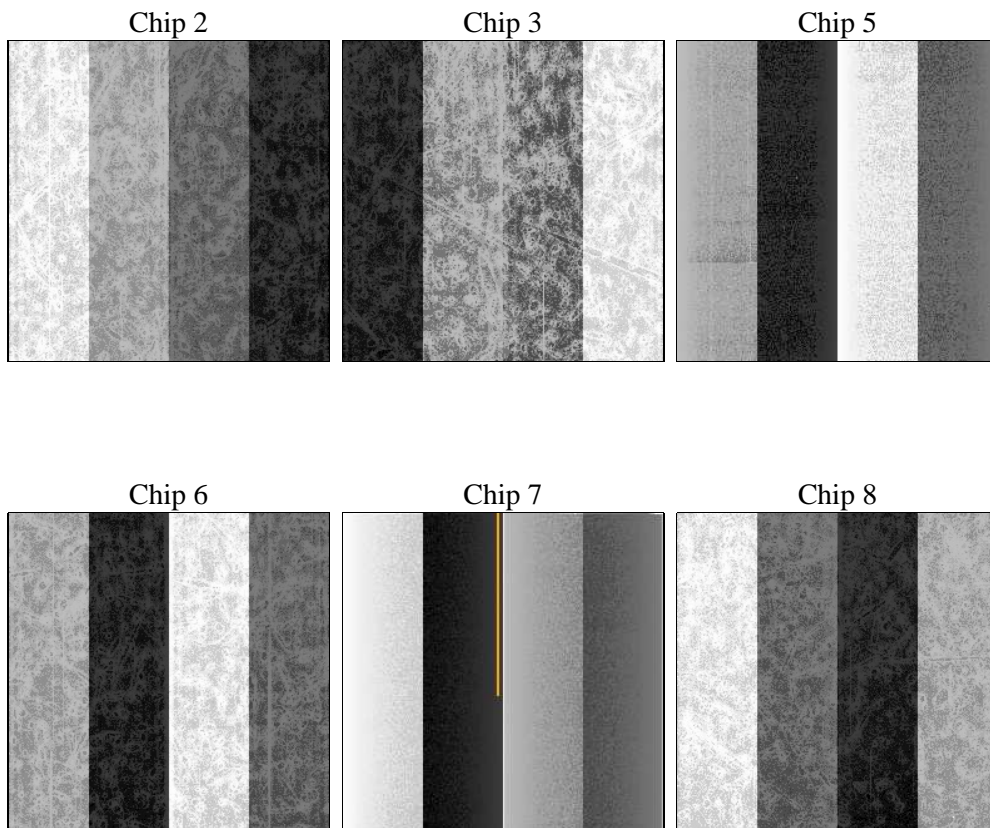
2 OBI

2.1 OBI

2.1.1 Images



2.1.2 Bias



2.1.3 Parameters

obi_num	0	Obi number	sched_exp_time	15000.000000	[s] Scheduled observation exposure time
ascdsver	8.4.5	Processing system revision	ontime	15048.518442988	Sum of GTIs [s]
caldsver	4.5.0	 	ontime2	15048.559482992	Sum of GTIs [s]
date	2012-06-30T13:39:21	Date and time of file creation	ontime3	15048.395322978	Sum of GTIs [s]
revision	2	Processing version of data	ontime5	15048.477402985	Sum of GTIs [s]
			ontime6	15048.436362982	Sum of GTIs [s]
			ontime7	15048.518442988	Sum of GTIs [s]
			ontime8	15048.354282975	Sum of GTIs [s]
			l1events	815431	Number of level 1 events

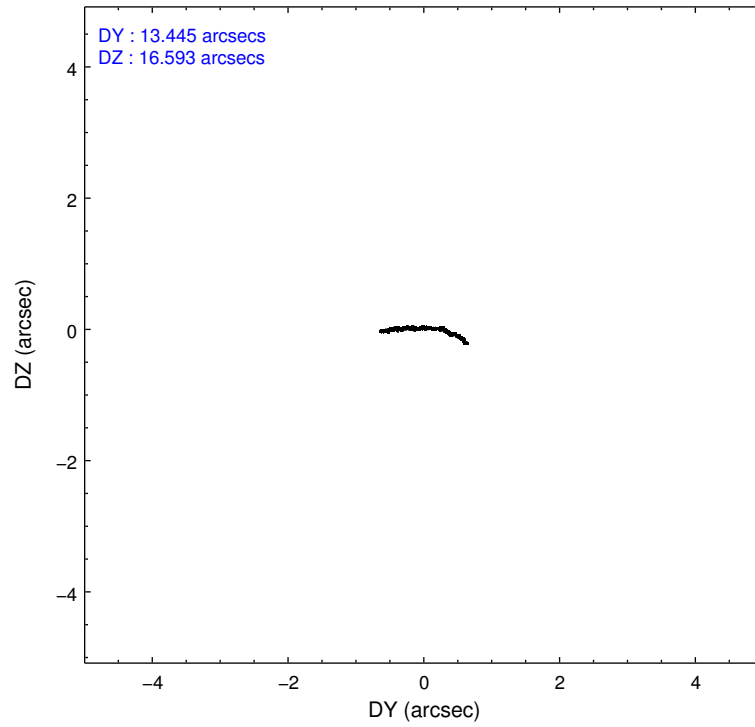
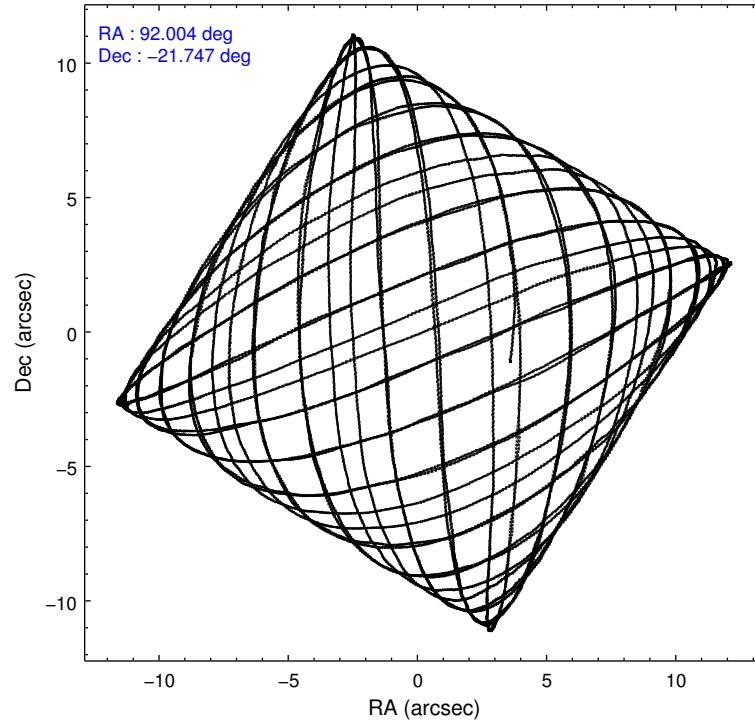
2.1.4 Events

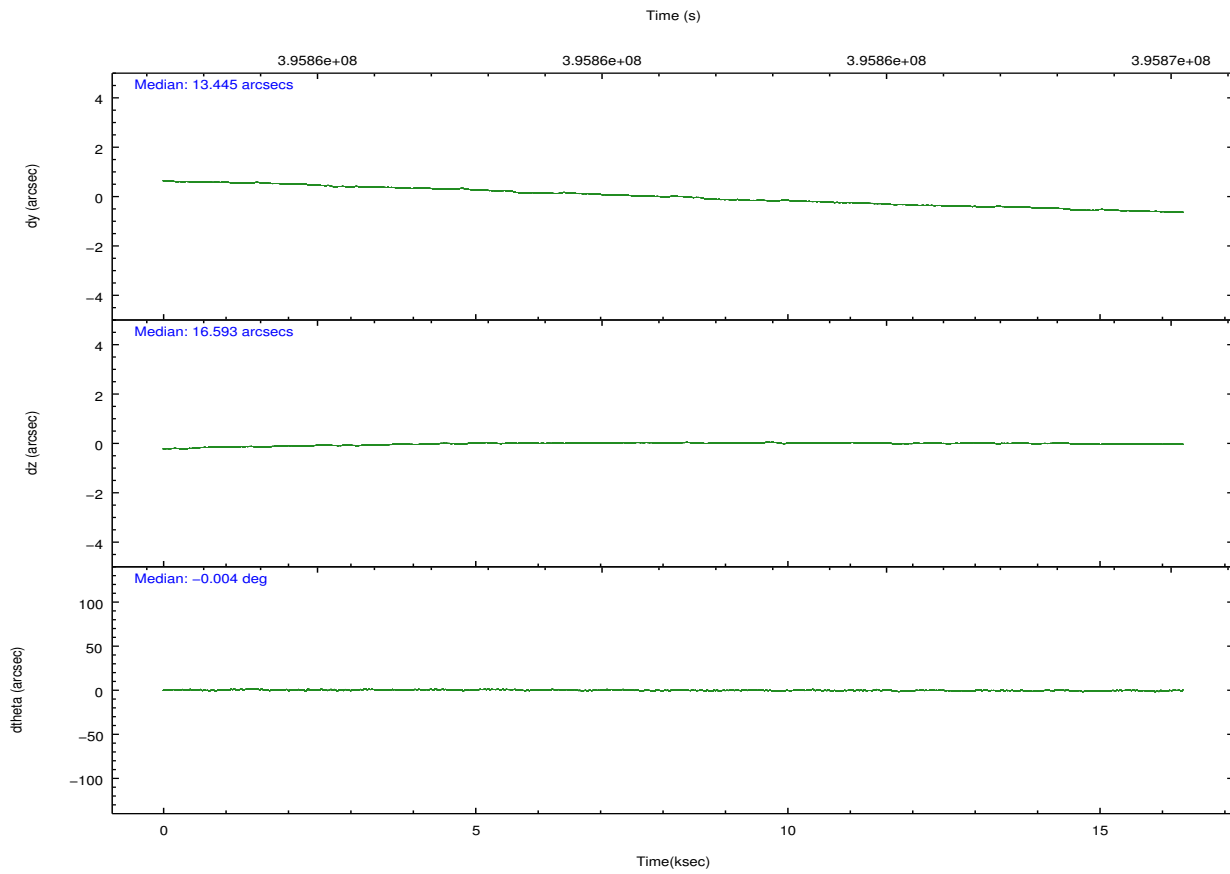
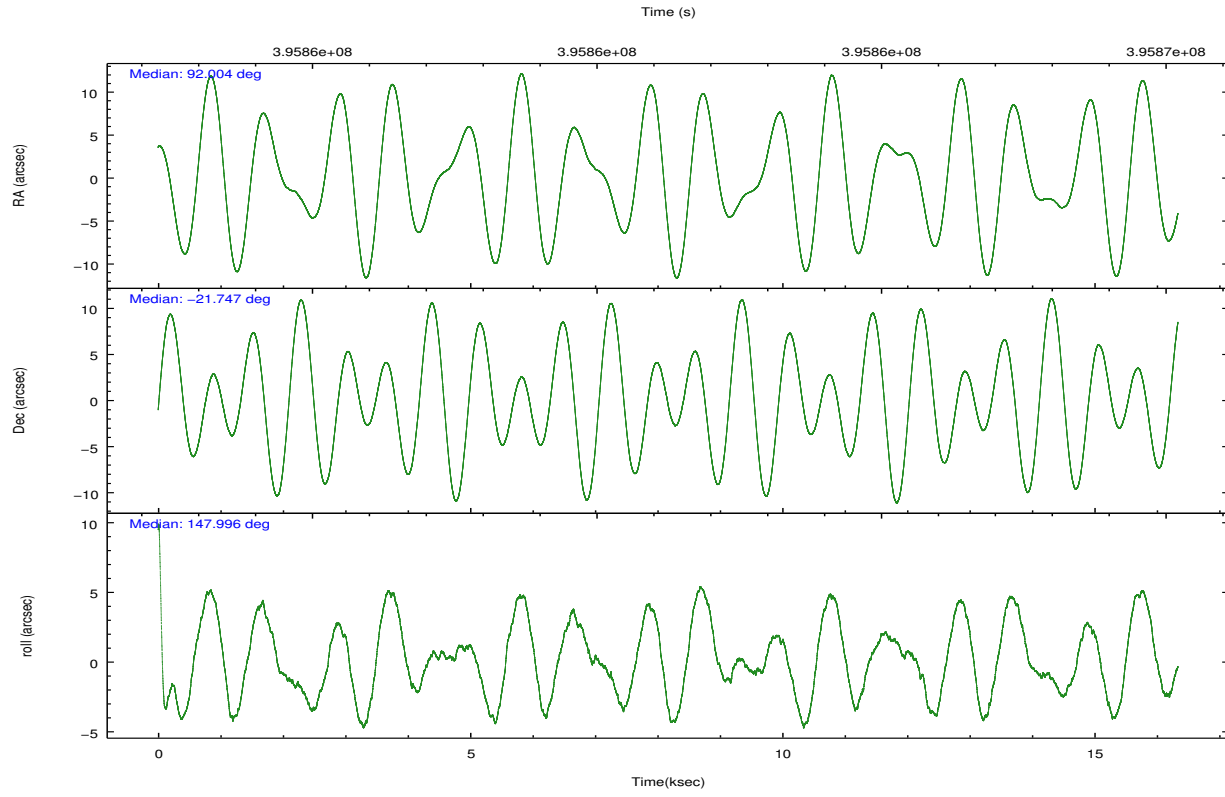
	ccd 2	ccd 3	ccd 5	ccd 6	ccd 7	ccd 8		ccd 2	ccd 3	ccd 5	ccd 6	ccd 7	ccd 8
level 1 events	120391	111871	177227	117134	137704	151104	grade 0 events	4409	3951	14351	4569	5661	11920
rejected events	108146	100694	86121	104443	75157	111388		3%	3%	8%	3%	4%	7%
rejected %	89%	90%	48%	89%	54%	73%	grade 1 events	70	64	452	63	164	130
								0%	0%	0%	0%	0%	0%
							grade 2 events	3074	2402	25877	2771	12993	9283
								2%	2%	14%	2%	9%	6%
							grade 3 events	1269	1246	3385	1348	5538	4164
								1%	1%	1%	1%	4%	2%
							grade 4 events	1189	1241	3143	1312	5463	3876
								0%	1%	1%	1%	3%	2%
							grade 5 events	4341	5091	13274	5092	14561	7472
								3%	4%	7%	4%	10%	4%
							grade 6 events	2309	2342	44399	2700	32931	10479
								1%	2%	25%	2%	23%	6%
							grade 7 events	103730	95534	72346	99279	60393	103780
								86%	85%	40%	84%	43%	68%

2.2 Compared Parameters

Parameter	Planned	Actual	Parameter	Planned	Actual
Instrument	ACIS	ACIS	Obspar format version number	7	7
Detector	ACIS-235678	ACIS-235678	Obspar file type	PREDICTED	ACTUAL
Grating	NONE	NONE	Obspar update status	NONE	UPDATED
Data mode	FAINT	FAINT	CCD I0 on	N	N
Observation mode	POINTING	POINTING	CCD I1 on	N	N
[deg] Pointing RA	92.033462	92.00401436510819	CCD I2 on	O1	Y
[deg] Pointing Dec	-21.747245	-21.74665229894116	CCD I3 on	O2	Y
[deg] Pointing Roll	147.857984	148.0036892458668	CCD S0 on	N	N
[mm] SIM focus pos	-0.684267	-0.6828225247311905	CCD S1 on	Y	Y
[mm] SIM defocus	0	0.001444936568705701	CCD S2 on	Y	Y
[mm] SIM translation stage pos	-190.132523	-190.1425803651734	CCD S3 on	Y	Y
[mm] SIM translation stage offset	0	0.01005778216563158	CCD S4 on	Y	Y
[s] Observation start time (MET)	395854416.184000	395852832.4714	CCD S5 on	N	N
Observation start date	2010-07-18T15:32:30	2010-07-18T15:07:12	Number of optional ACIS chips dropped	0	0
[s] Observation end time (MET)	395869416.184000	395870004.80977	On-chip summing requested	N	N
Observation end date	2010-07-18T19:42:30	2010-07-18T19:53:24	Subarray requested	NONE	NONE
Read mode	TIMED	TIMED	Alternating exposures requested	N	N
			[s] Primary exposure time	0.000000	3.2

2.3 Aspect



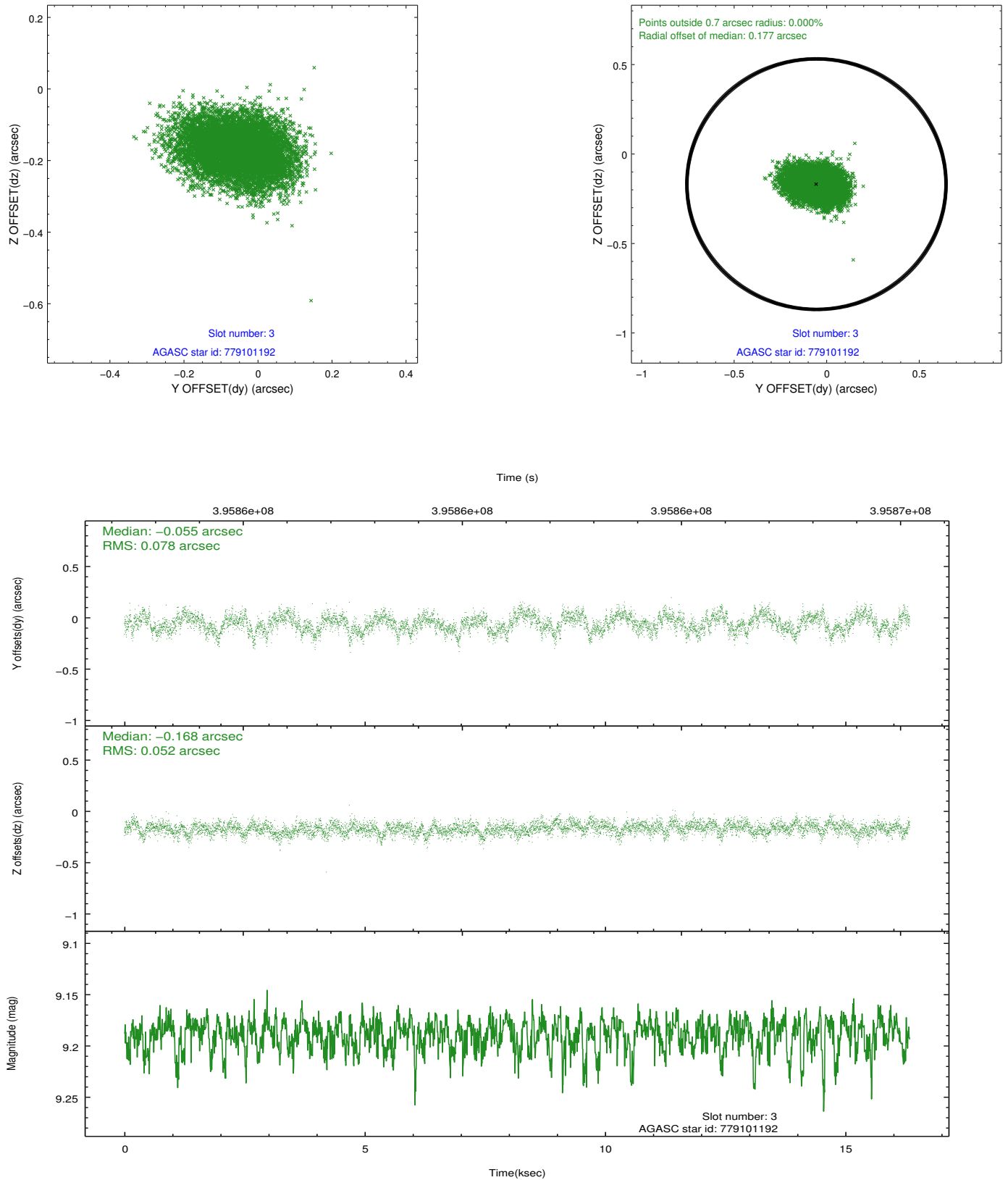


Slot Statistics

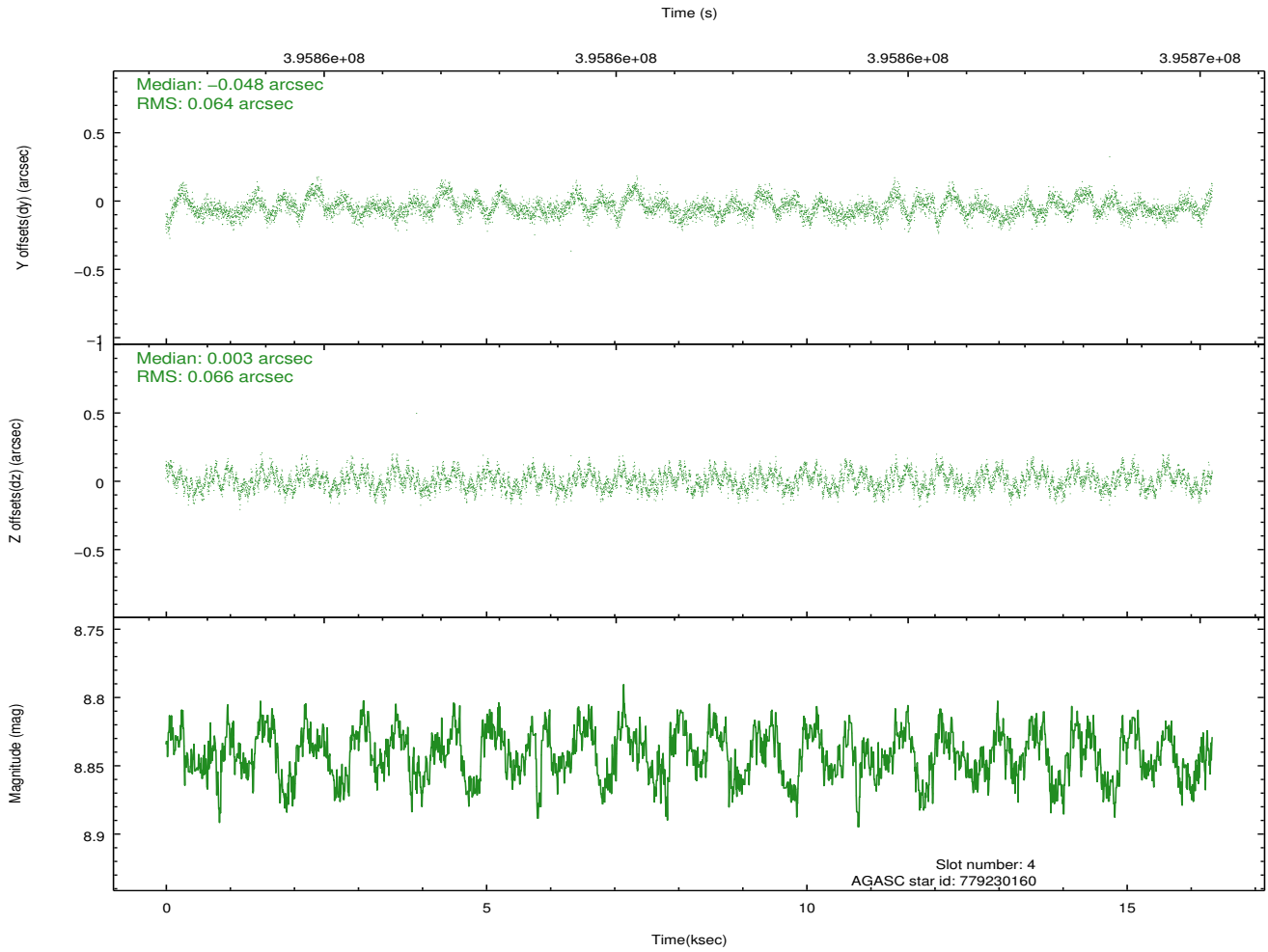
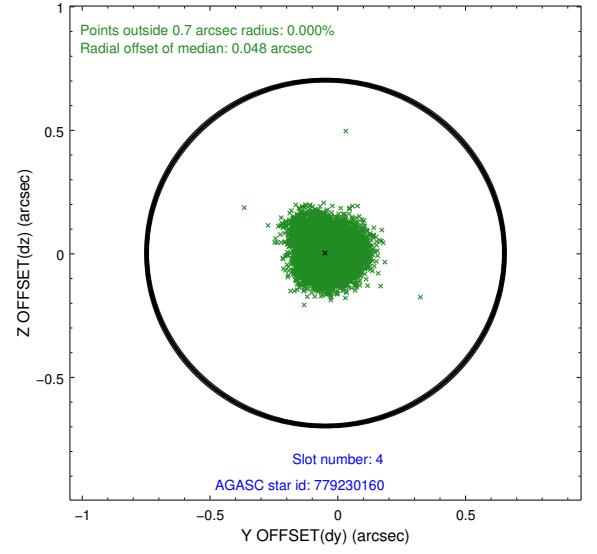
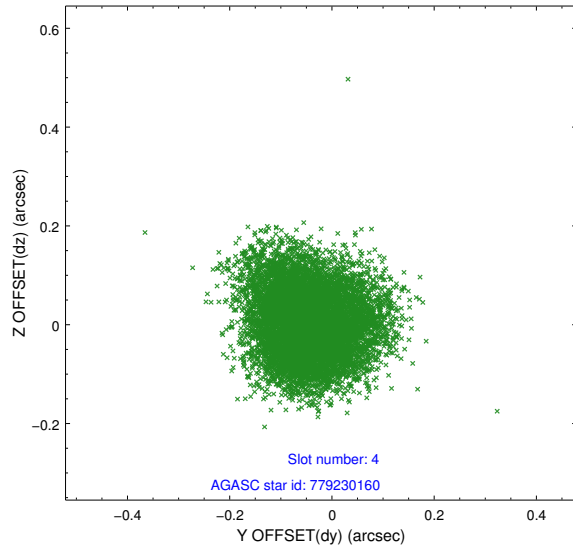
slot	status	id	mag	n_pts	med_dy	med_dz	dr1	dr2	ra	dec	mean_y	mean_z
0	FID	ACIS-S-2	6.91	3984	-0.028	-0.019	0.013	0.024	0.000000	0.000000	-766.41	-1737.95
1	FID	ACIS-S-4	6.99	3985	0.152	0.019	0.015	0.027	0.000000	0.000000	2146.94	170.27
2	FID	ACIS-S-5	7.02	3984	-0.152	0.007	0.011	0.018	0.000000	0.000000	-1819.02	164.26
3	GUIDE	779101192	9.19	7964	-0.055	-0.168	0.100	0.162	91.160150	-21.910965	2151.52	2058.37
4	GUIDE	779230160	8.84	7965	-0.048	0.003	0.100	0.157	92.420270	-22.015674	-1607.90	133.18
5	GUIDE	779231072	9.06	7958	0.094	0.138	0.109	0.171	92.488393	-21.240662	-323.33	-2353.98
6	GUIDE	779241600	9.15	7966	0.160	-0.136	0.079	0.130	92.404857	-22.310942	-2127.86	1061.01
7	GUIDE	779111624	7.72	7968	-0.145	0.161	0.076	0.127	91.919744	-20.873333	1997.58	-2459.44

2.4 Star Slots

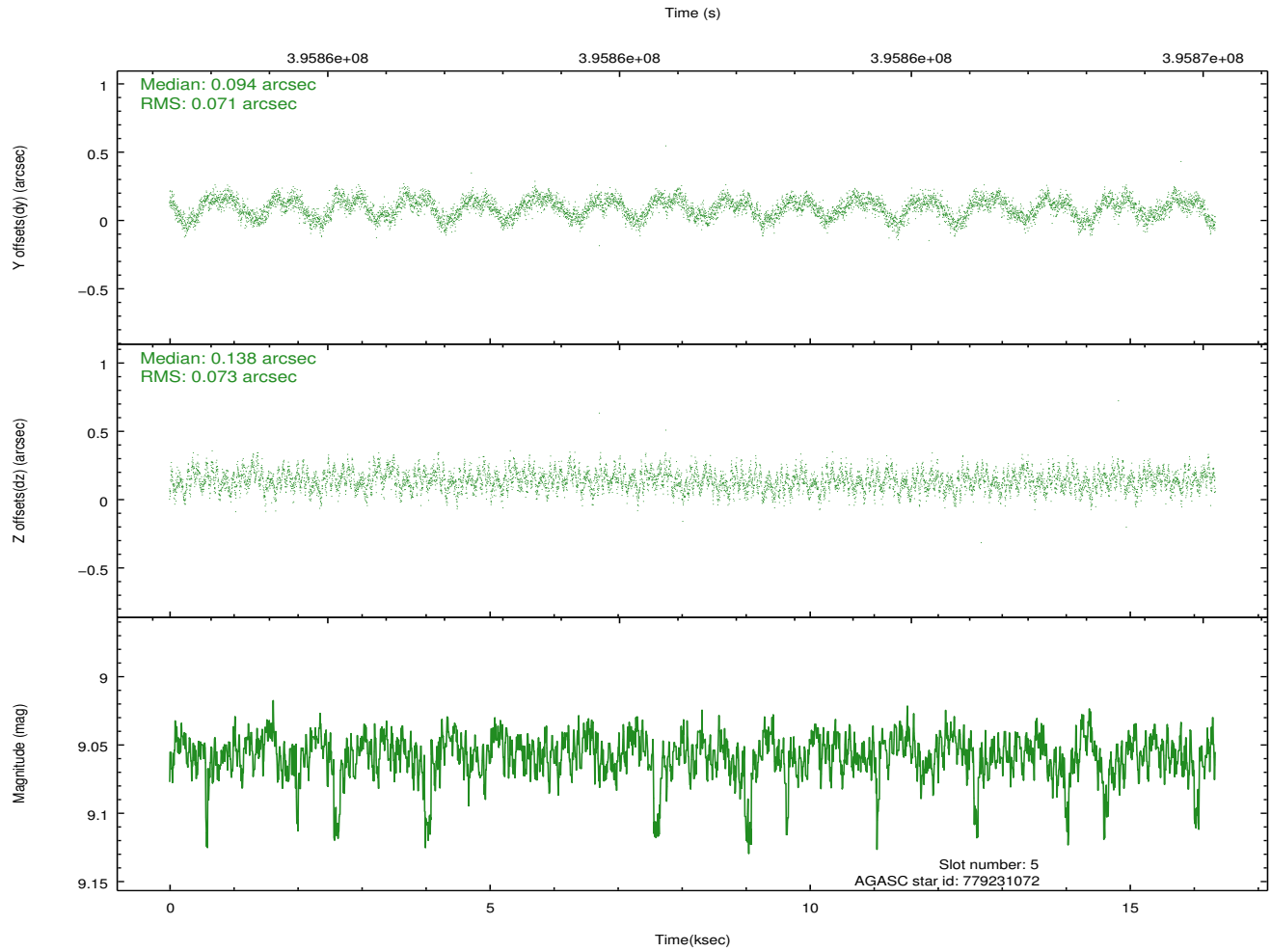
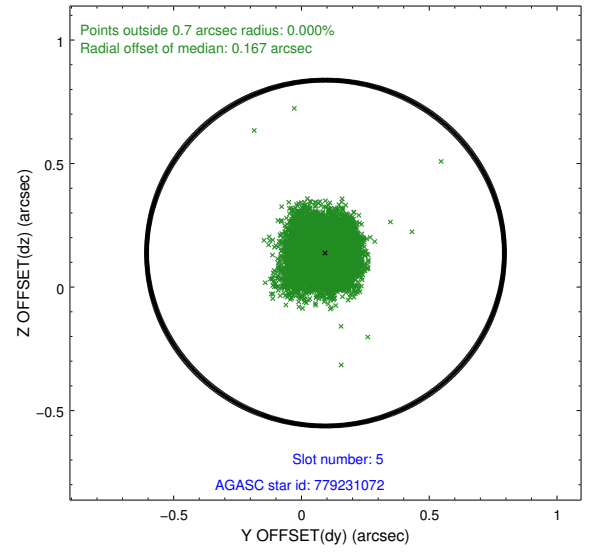
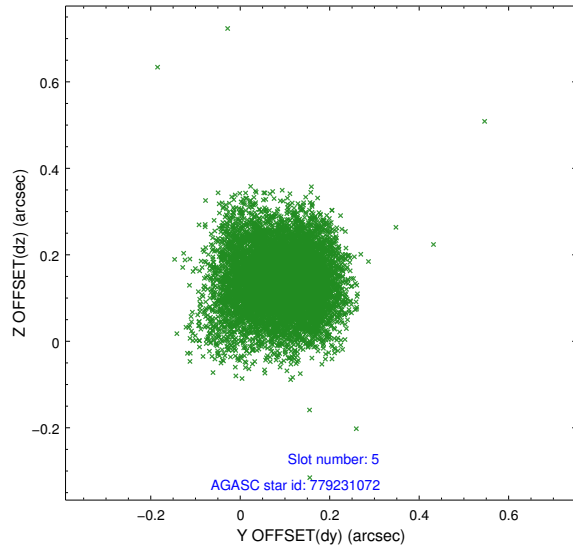
2.4.1 Slot 3



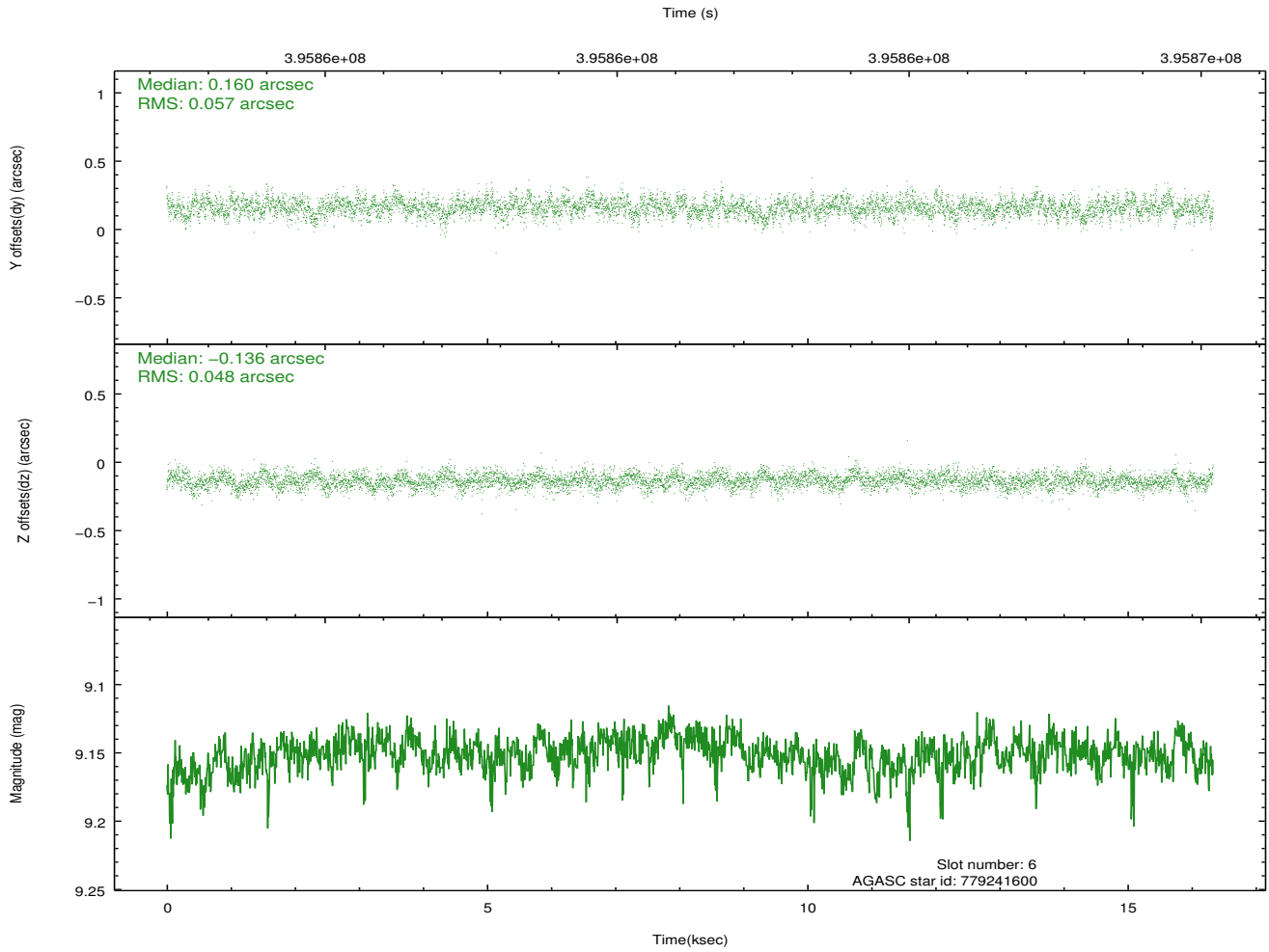
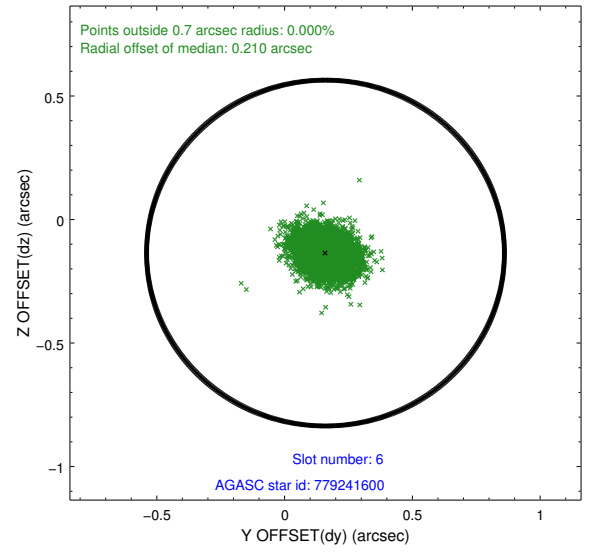
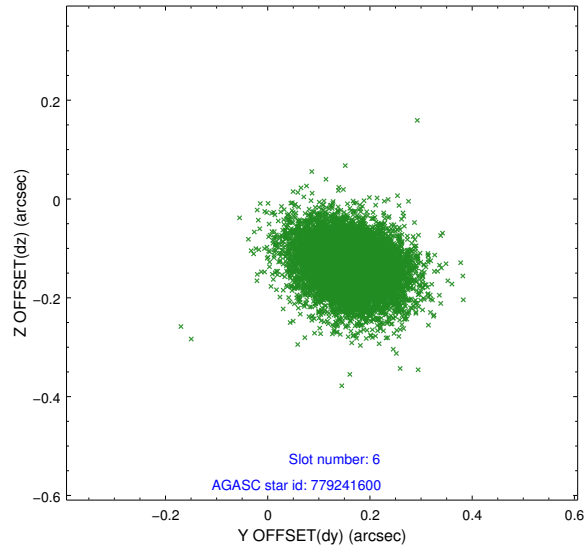
2.4.2 Slot 4



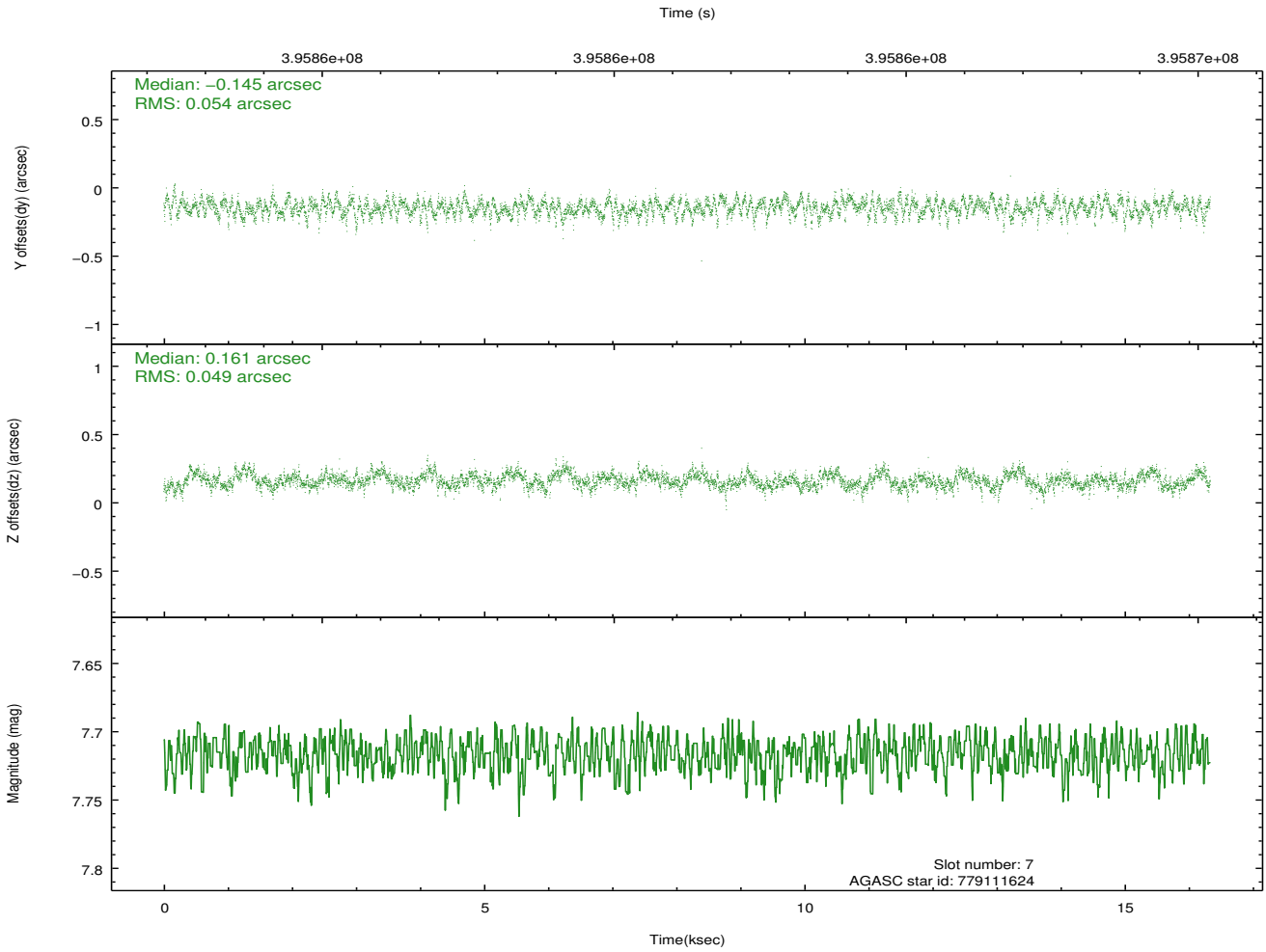
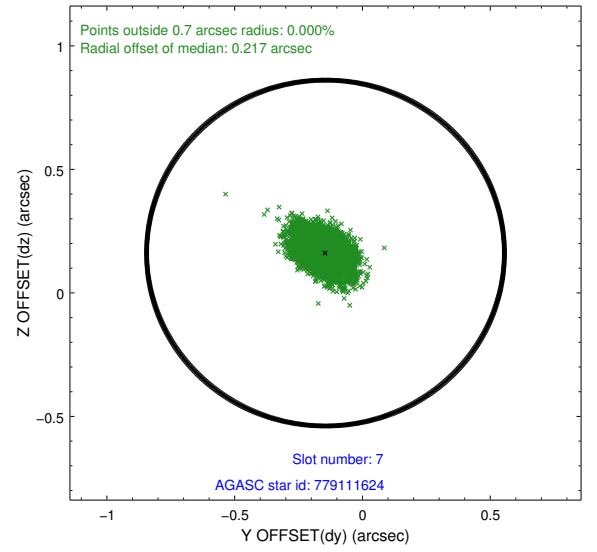
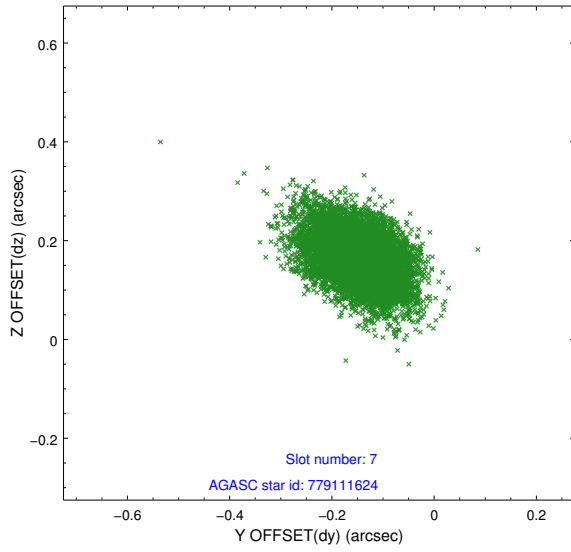
2.4.3 Slot 5



2.4.4 Slot 6

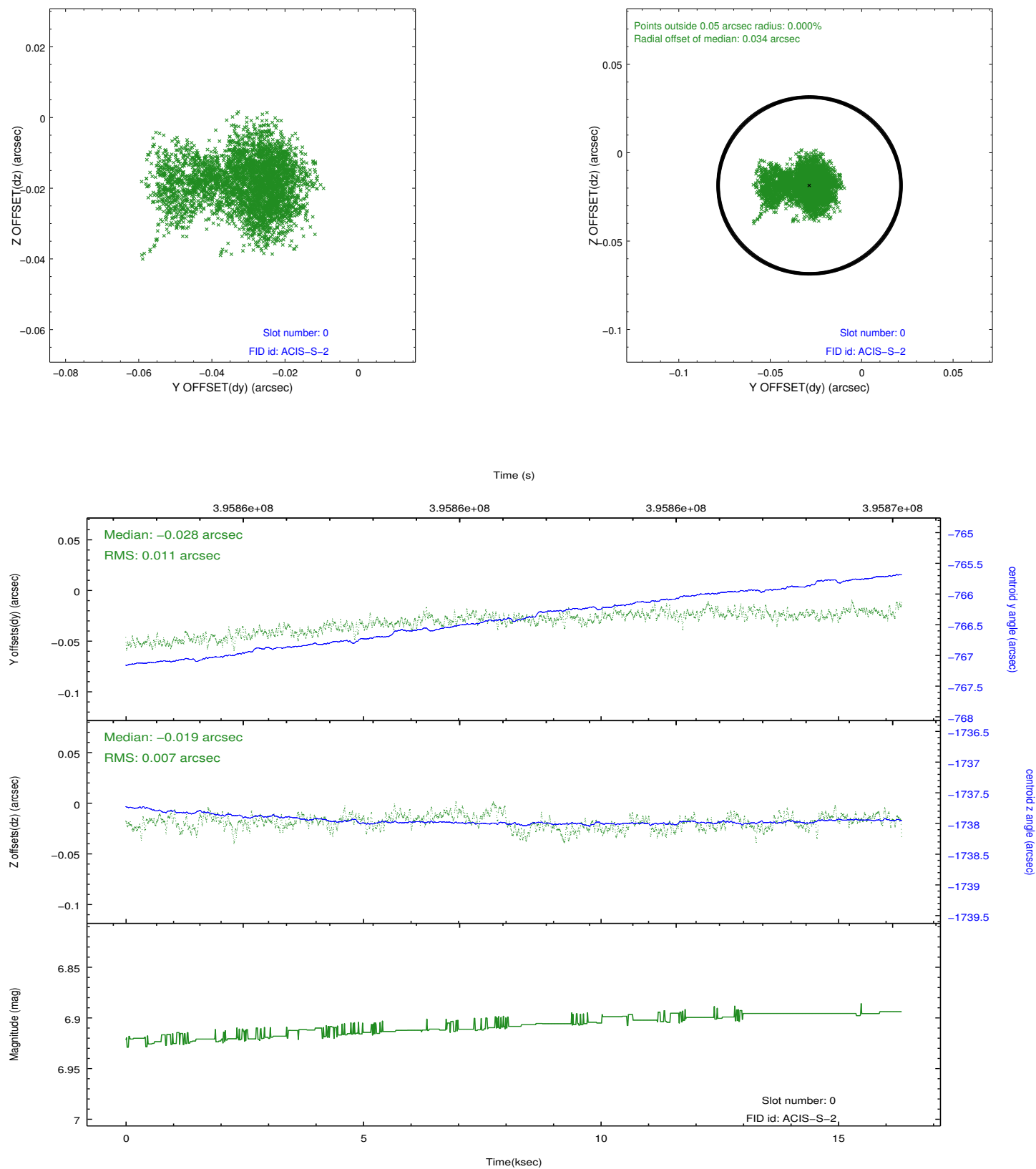


2.4.5 Slot 7

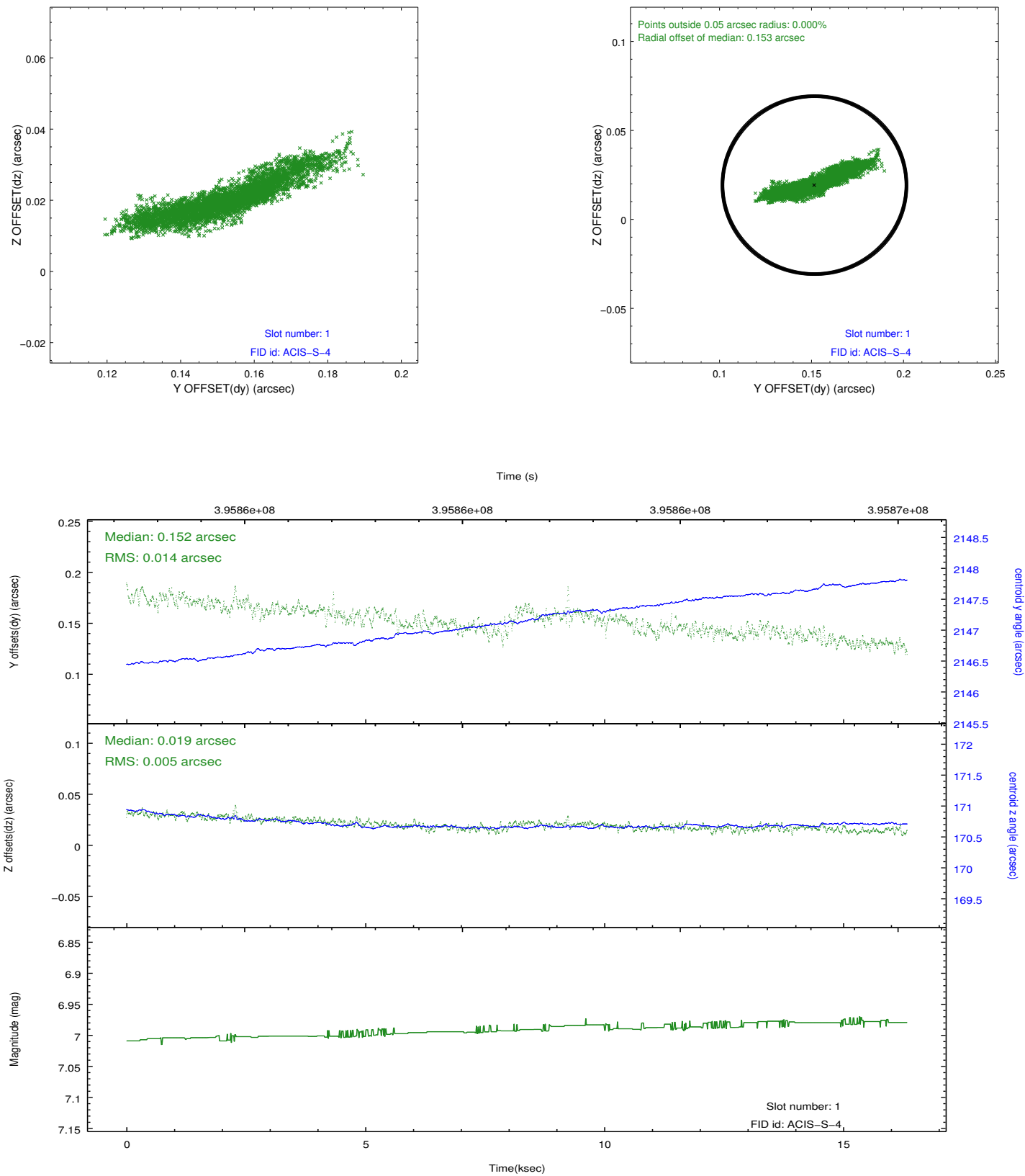


2.5 FID Slots

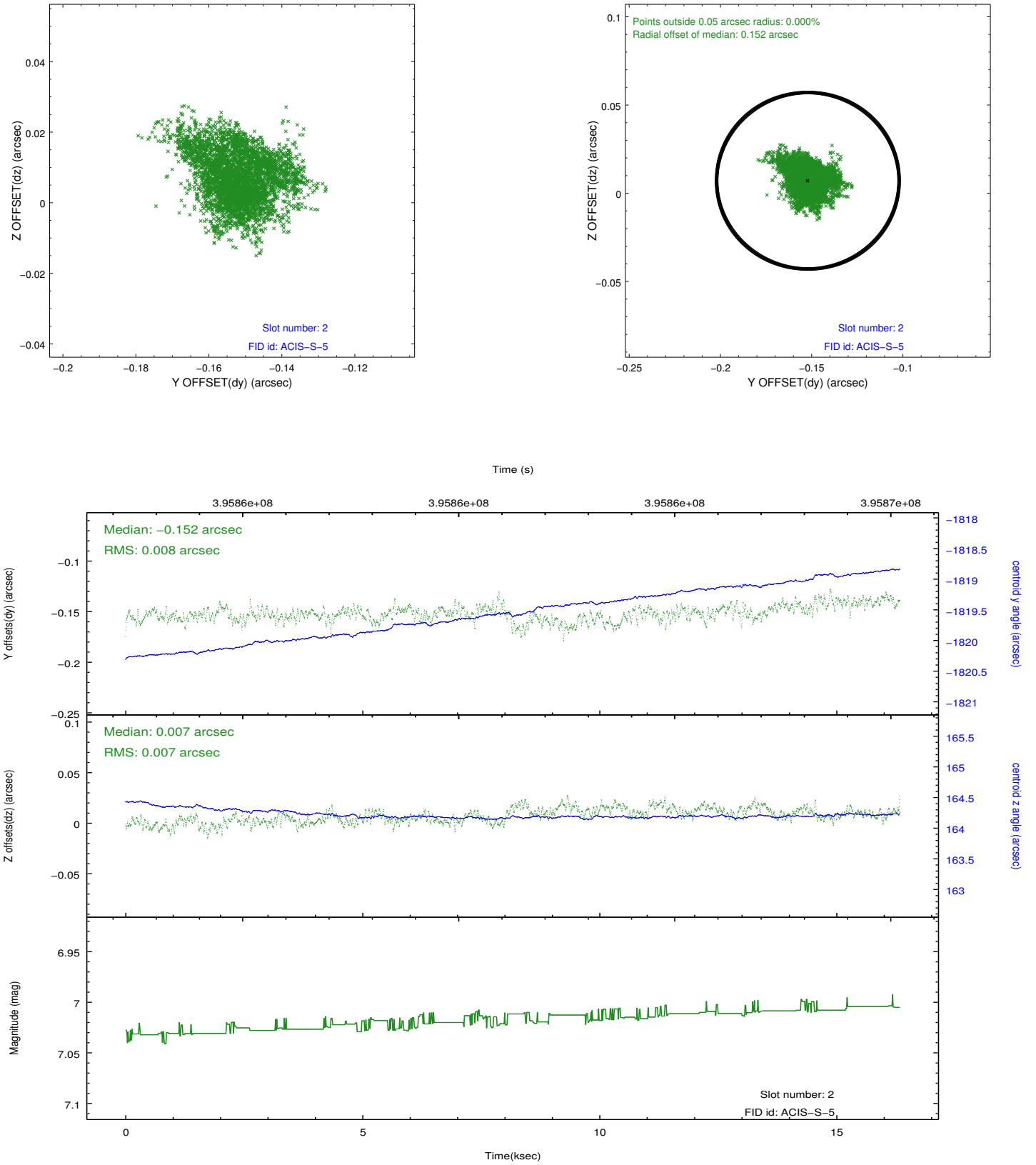
2.5.1 Slot 0



2.5.2 Slot 1



2.5.3 Slot 2



A Summary

A.1 Status

V&V Scientist	Jen Lauer
V&V Date (YYYY-MM-DD)	2012.07.09
V&V Edition	1
V&V Disposition and Status	OK
V&V Charge Time	15.048518443763

A.2 Comments