

V&V Reference Report

L2 ASCDS Version : 8.4.5

Observation 11652 - L2 Version 2
Chandra X-Ray Center

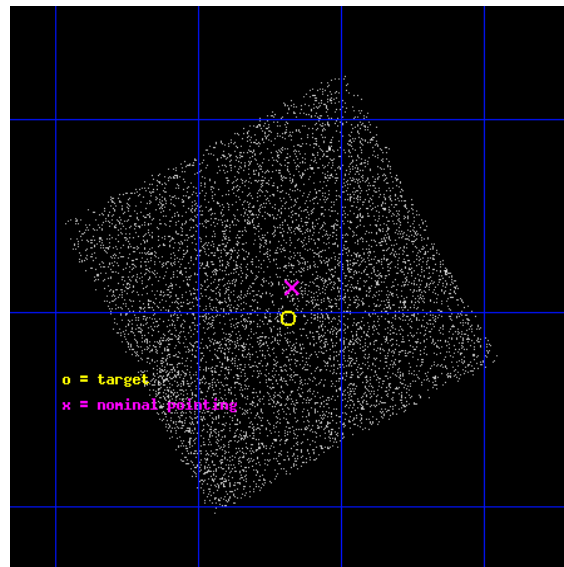
L2 Processing Date : Jun 18 2012

Contents

1	Front	2
2	OBI	3
2.1	OBI	3
2.1.1	Images	3
2.1.2	Bias	3
2.1.3	Parameters	4
2.1.4	Events	4
2.2	Compared Parameters	5
2.3	Aspect	6
2.4	Star Slots	9
2.4.1	Slot 3	9
2.4.2	Slot 4	10
2.4.3	Slot 5	11
2.4.4	Slot 6	12
2.4.5	Slot 7	13
2.5	FID Slots	14
2.5.1	Slot 0	14
2.5.2	Slot 1	15
2.5.3	Slot 2	16
A	Summary	17
A.1	Status	17
A.2	Comments	17

1 Front

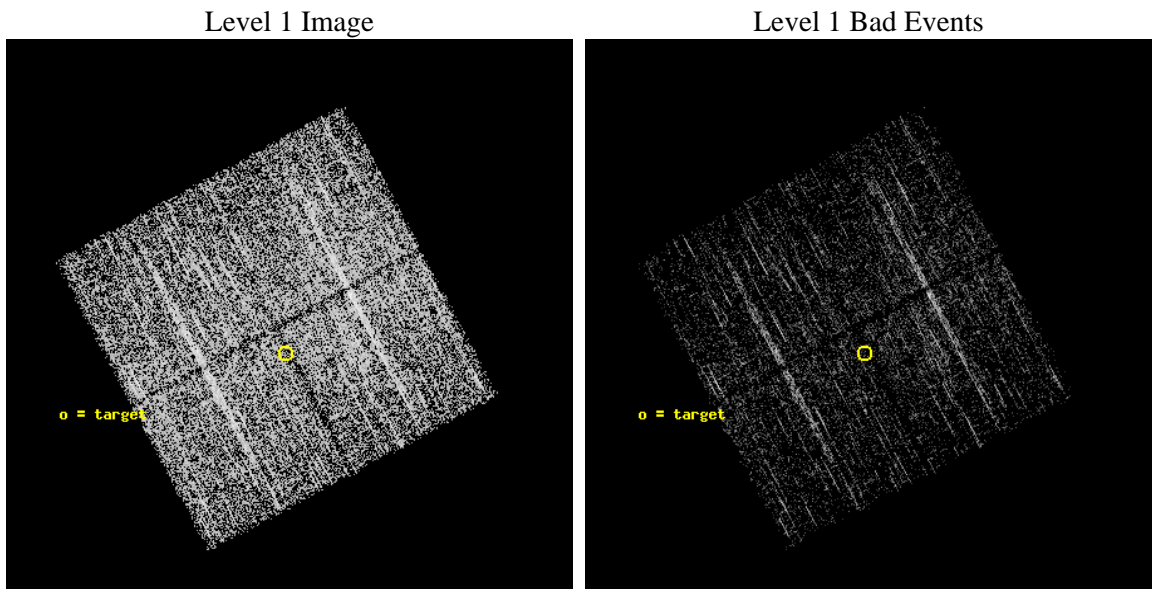
seq_num	702238	Sequence number
obs_id	11652	Observation id
title	AGN ignition in the galaxy group environment	Proposal title
observer	Dr. John Silverman	Principal investigator
object	2PIGG_m1746	Source name
dtcycle	0	
cycle	P	events from which exps? Prim/Second/Both
ra_targ	220.046667	Observer's specified target RA [deg]
dec_targ	-3.670722	Observer's specified target Dec [deg]
ra_nom	220.04364868103	Nominal RA [deg]
dec_nom	-3.6449901113973	Nominal Dec [deg]
roll_nom	61.926061108847	Nominal Roll [deg]
revision	2	Processing version of data
ontime	2554.4000196457	Sum of GTIs [s]
livetime	2521.0249028671	Livetime [s]
ontime0	2554.4000196457	Sum of GTIs [s]
ontime1	2554.4000196457	Sum of GTIs [s]
ontime2	2554.4000196457	Sum of GTIs [s]
ontime3	2554.4000196457	Sum of GTIs [s]
l2events	7782	Number of level 2 events



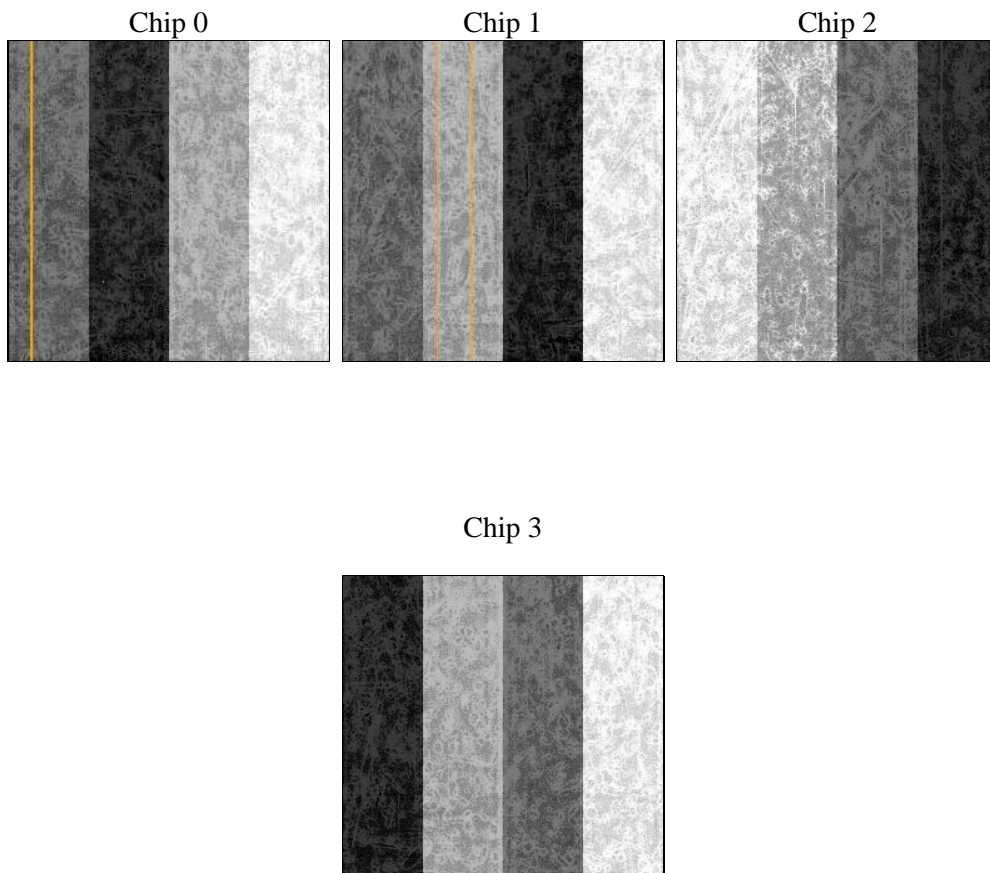
2 OBI

2.1 OBI

2.1.1 Images



2.1.2 Bias



2.1.3 Parameters

obi_num	0	Obi number	sched_exp_time	2500.000000	[s] Scheduled observation exposure time
ascdsver	8.4.5	Processing system revision	ontime	2554.4000196457	Sum of GTIs [s]
caldsver	4.4.10	 	ontime0	2554.4000196457	Sum of GTIs [s]
date	2012-06-18T06:49:39	Date and time of file creation	ontime1	2554.4000196457	Sum of GTIs [s]
revision	2	Processing version of data	ontime2	2554.4000196457	Sum of GTIs [s]
			ontime3	2554.4000196457	Sum of GTIs [s]
			l1events	85401	Number of level 1 events

2.1.4 Events

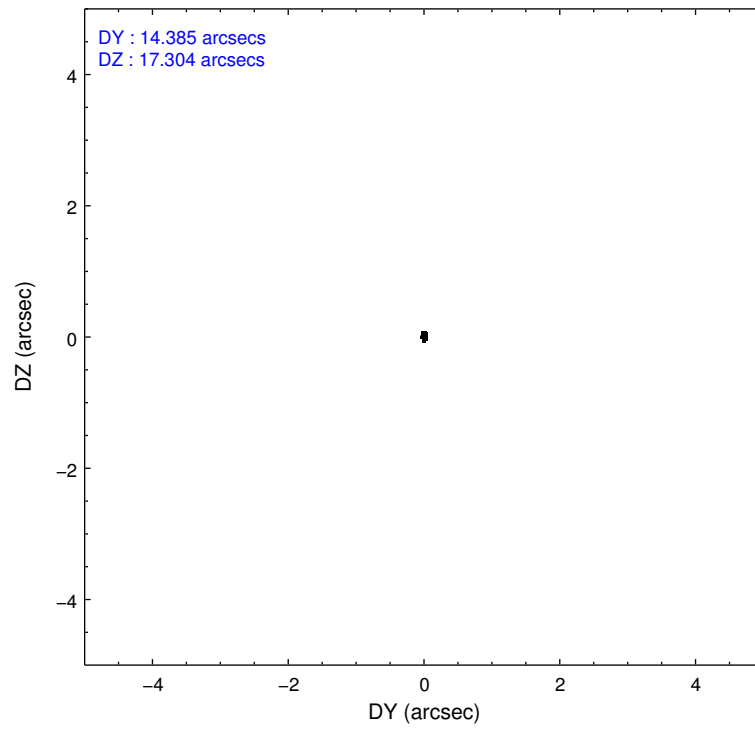
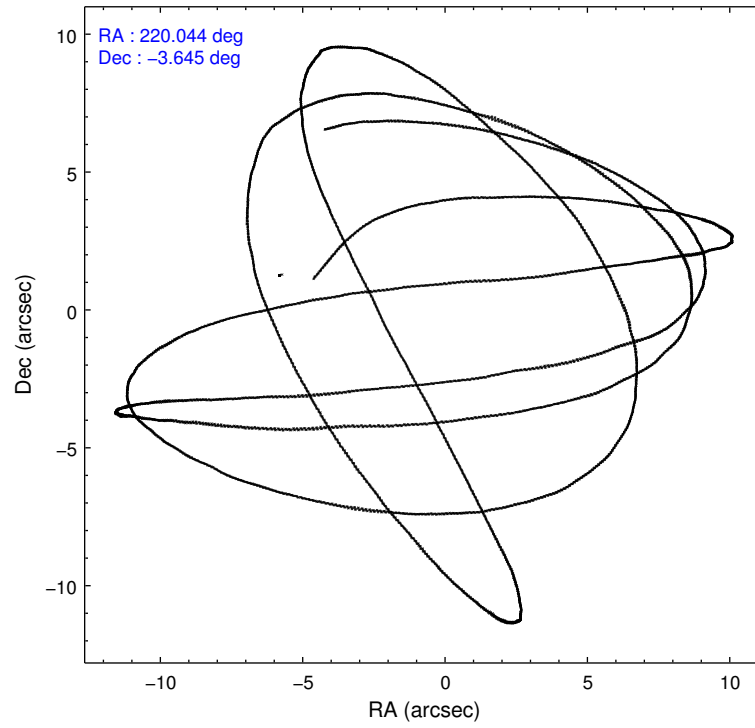
	ccd 0	ccd 1	ccd 2	ccd 3
level 1 events	20925	20731	21697	22048
rejected events	18645	18068	19441	19866
rejected %	89%	87%	89%	90%

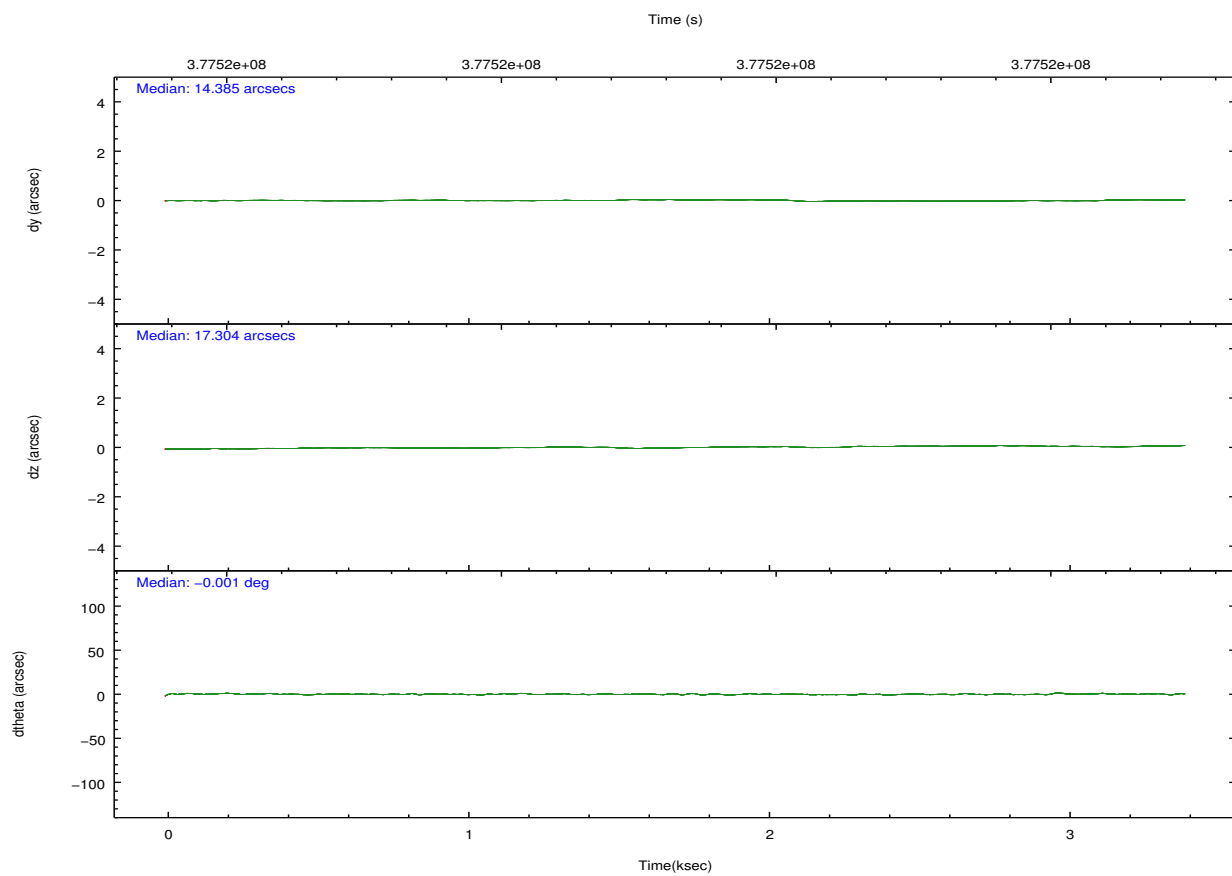
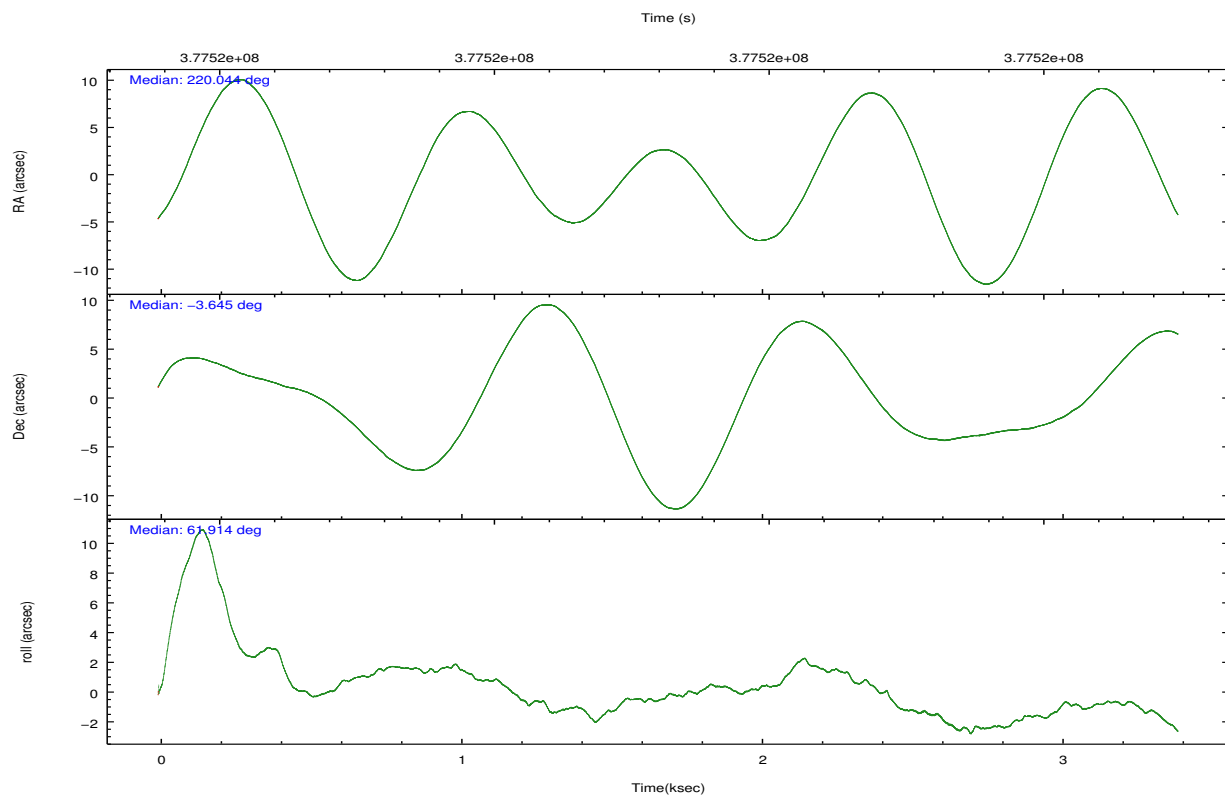
	ccd 0	ccd 1	ccd 2	ccd 3
grade 0 events	835	983	838	859
	3%	4%	3%	3%
grade 1 events	10	13	13	16
	0%	0%	0%	0%
grade 2 events	532	644	525	473
	2%	3%	2%	2%
grade 3 events	244	269	254	216
	1%	1%	1%	0%
grade 4 events	216	264	214	228
	1%	1%	0%	1%
grade 5 events	794	868	740	956
	3%	4%	3%	4%
grade 6 events	455	510	426	407
	2%	2%	1%	1%
grade 7 events	17839	17180	18687	18893
	85%	82%	86%	85%

2.2 Compared Parameters

Parameter	Planned	Actual	Parameter	Planned	Actual
Instrument	ACIS	ACIS	Obspar format version number	7	7
Detector	ACIS-0123	ACIS-0123	Obspar file type	PREDICTED	ACTUAL
Grating	NONE	NONE	Obspar update status	NONE	UPDATED
Data mode	VFAINT	VFAINT	Number of optional ACIS chips dropped	0	0
Observation mode	POINTING	POINTING	On-chip summing requested	N	N
[deg] Pointing RA	220.044520	220.0436486810338	Subarray requested	NONE	NONE
[deg] Pointing Dec	-3.672591	-3.644990111397348	Alternating exposures requested	N	N
[deg] Pointing Roll	61.717455	61.92606110884699	[s] Primary exposure time	0.000000	3.1
[mm] SIM focus pos	-0.782348	-0.7809083437167272			
[mm] SIM defocus	0	0.001439871863259334			
[mm] SIM translation stage pos	-233.592463	-233.5874344608287			
[mm] SIM translation stage offset	0	-0.005018542100998502			
[s] Observation start time (MET)	377520819.184000	377519598.51499			
Observation start date	2009-12-18T10:52:33	2009-12-18T10:33:18			
[s] Observation end time (MET)	377523319.184000	377523528.36519			
Observation end date	2009-12-18T11:34:13	2009-12-18T11:38:48			
Read mode	TIMED	TIMED			

2.3 Aspect



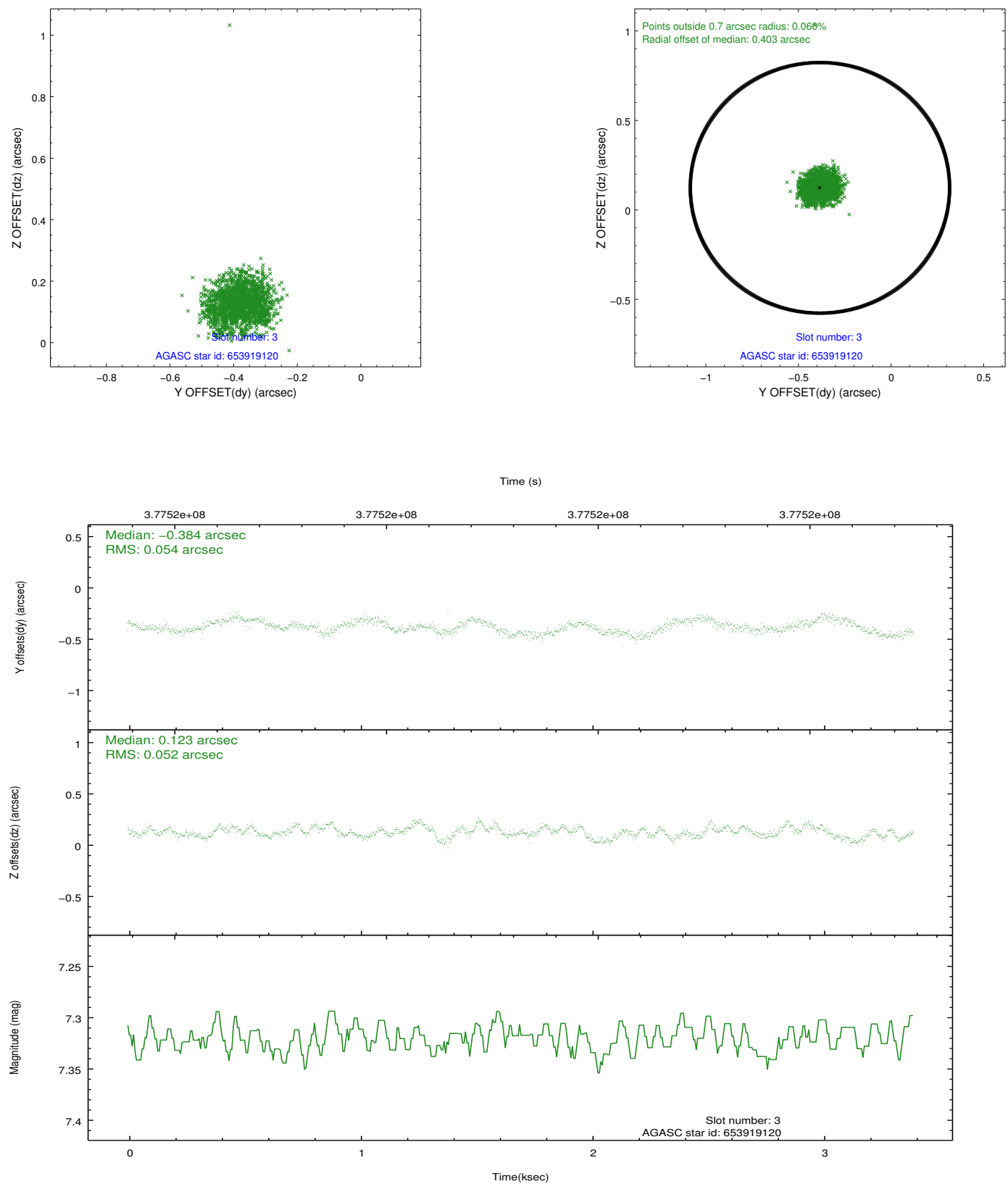


Slot Statistics

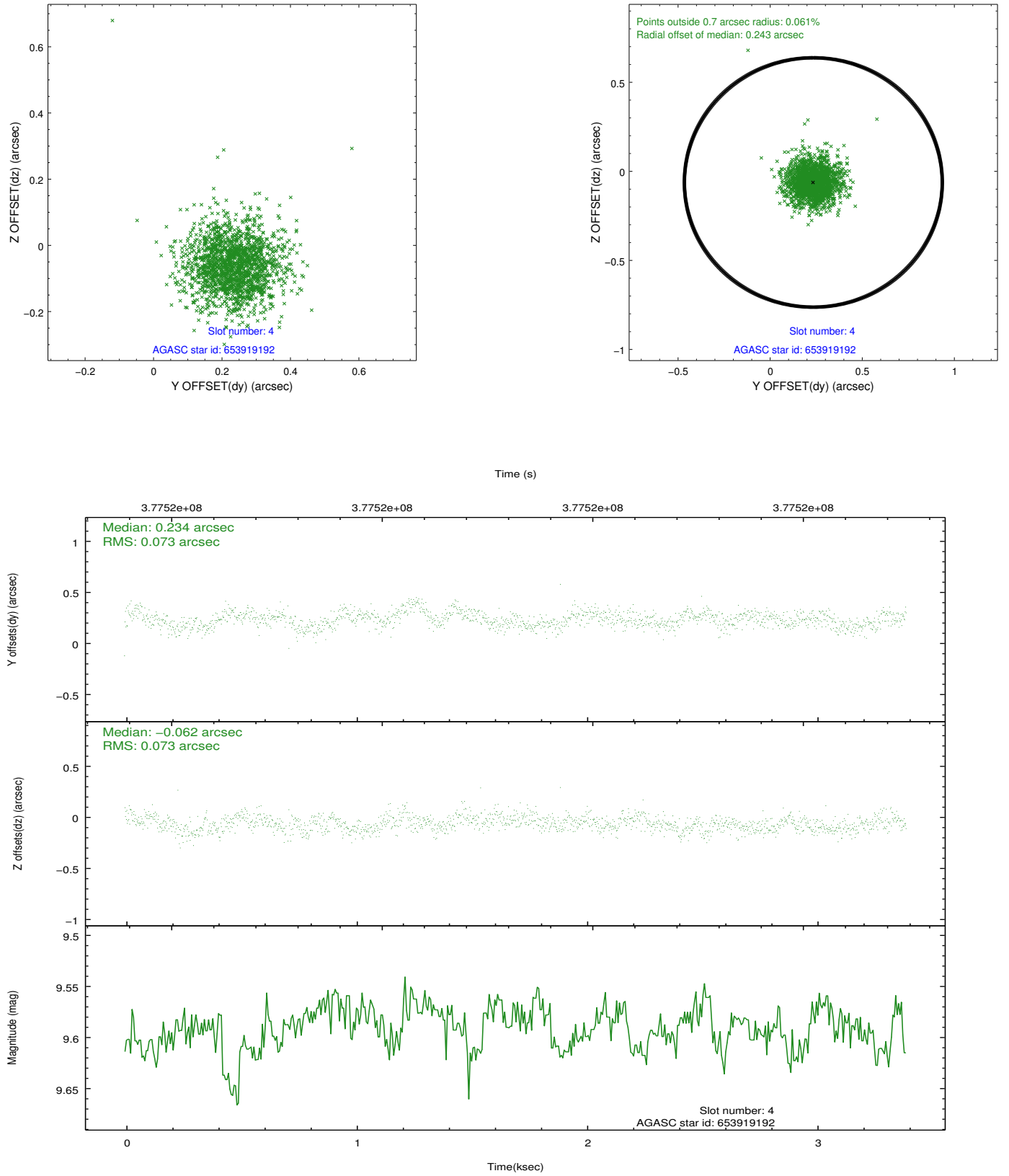
slot	status	id	mag	n_pts	med_dy	med_dz	dr1	dr2	ra	dec	mean_y	mean_z
0	FID	ACIS-I-1	6.99	828	0.052	0.005	0.006	0.013	0.000000	0.000000	925.12	-840.98
1	FID	ACIS-I-5	6.97	828	-0.192	0.067	0.006	0.010	0.000000	0.000000	-1822.17	1055.68
2	FID	ACIS-I-6	6.98	828	0.049	-0.002	0.006	0.011	0.000000	0.000000	388.67	1702.19
3	GUIDE	653919120	7.32	1656	-0.384	0.123	0.080	0.116	220.494654	-3.523621	1237.65	-1169.67
4	GUIDE	653919192	9.59	1650	0.234	-0.062	0.106	0.177	219.732665	-3.659667	-490.01	1008.38
5	GUIDE	653921296	6.16	1655	-0.108	-0.214	0.072	0.112	219.620684	-3.611082	-528.24	1446.62
6	GUIDE	654317776	7.02	1656	0.095	-0.107	0.079	0.124	219.286117	-3.892211	-1989.20	2024.14
7	GUIDE	654444152	10.15	1589	0.179	0.266	0.229	0.345	220.478939	-4.050219	-459.40	-2015.63

2.4 Star Slots

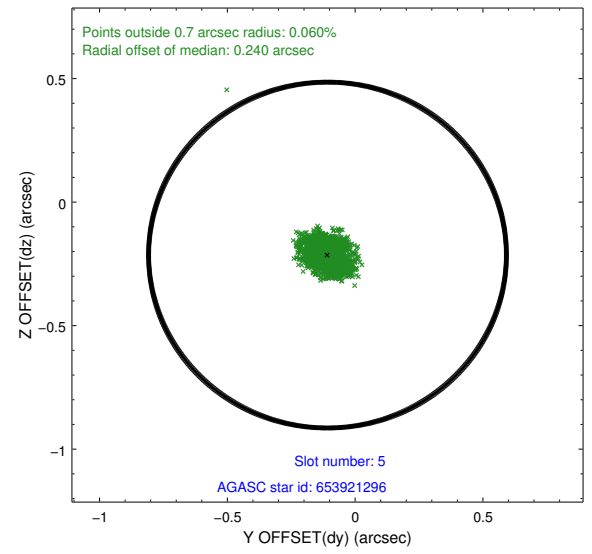
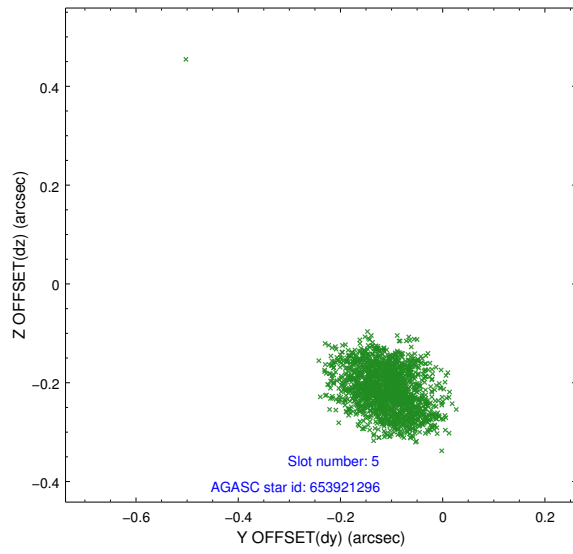
2.4.1 Slot 3



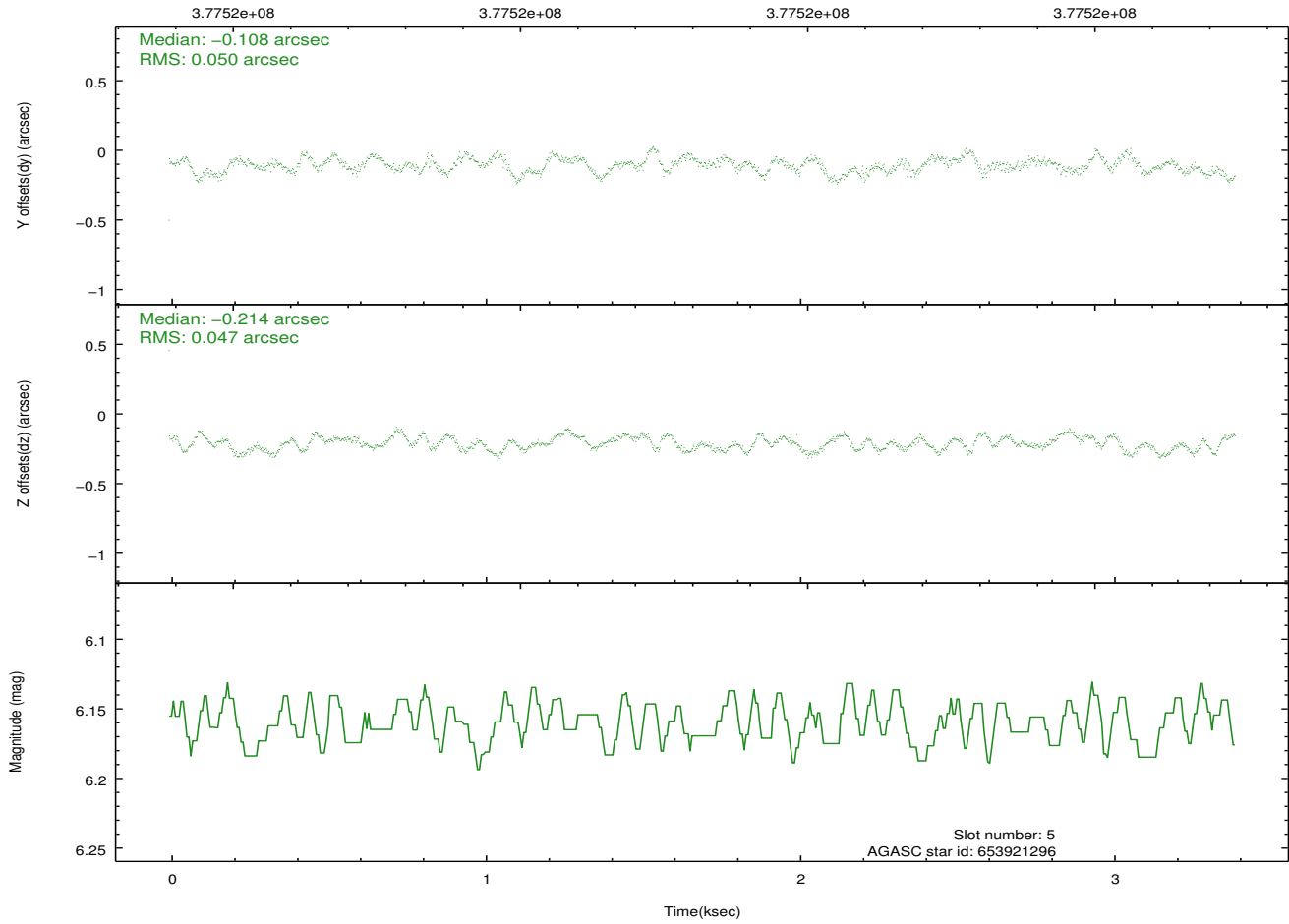
2.4.2 Slot 4



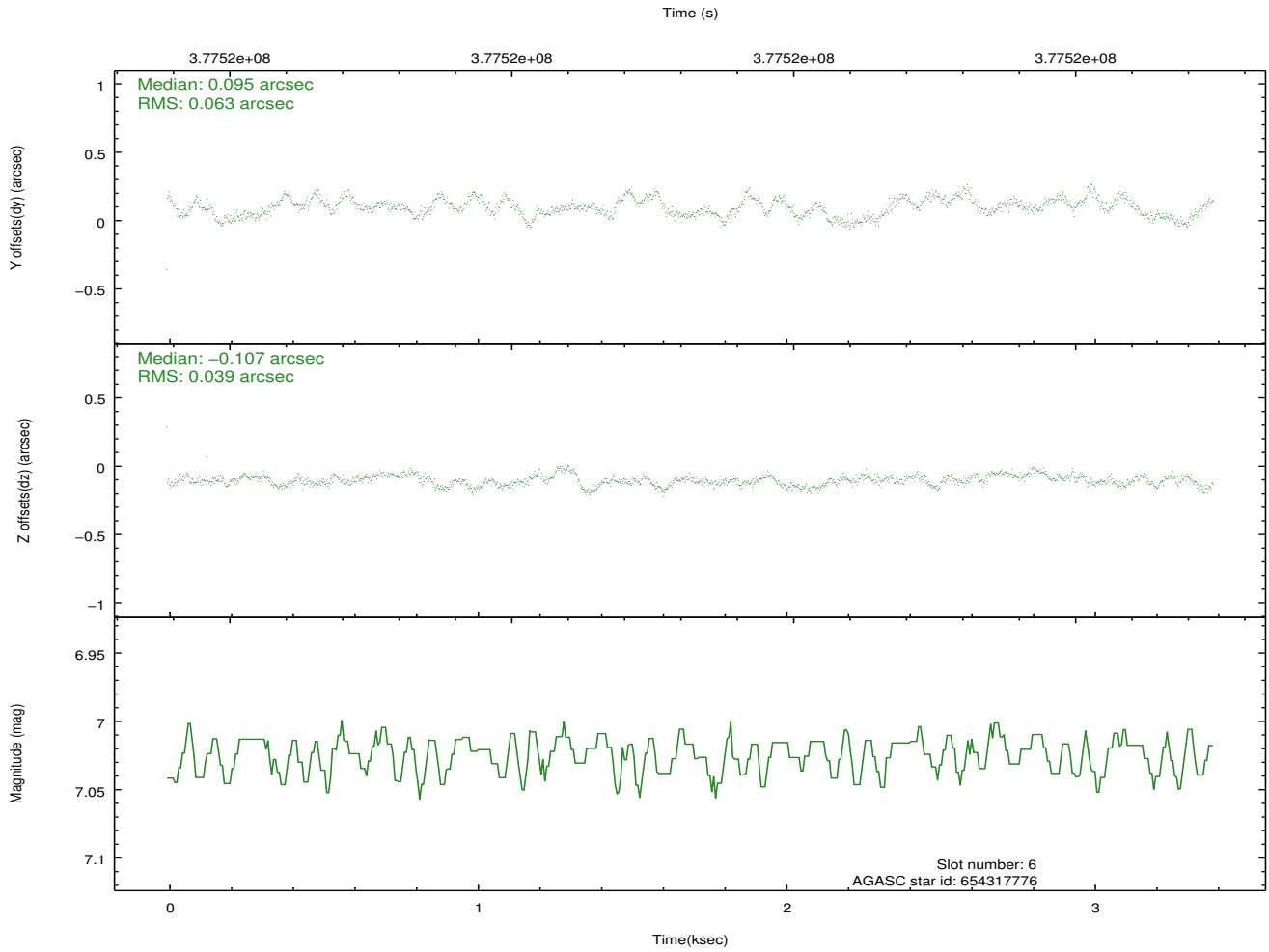
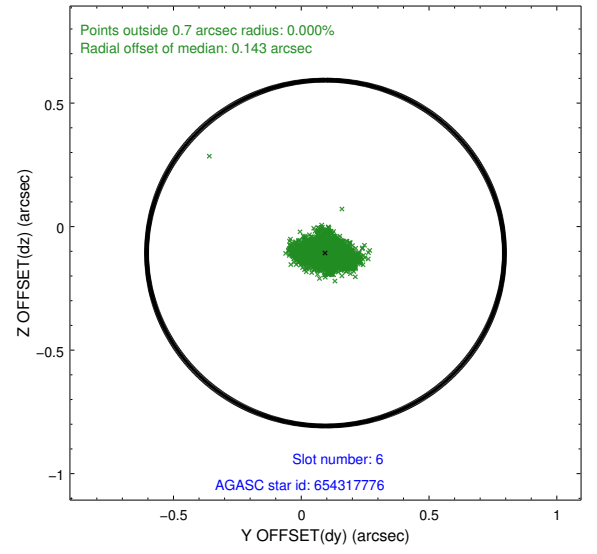
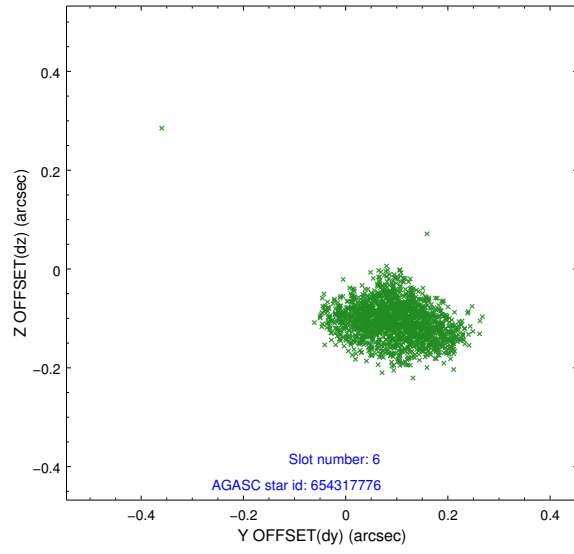
2.4.3 Slot 5



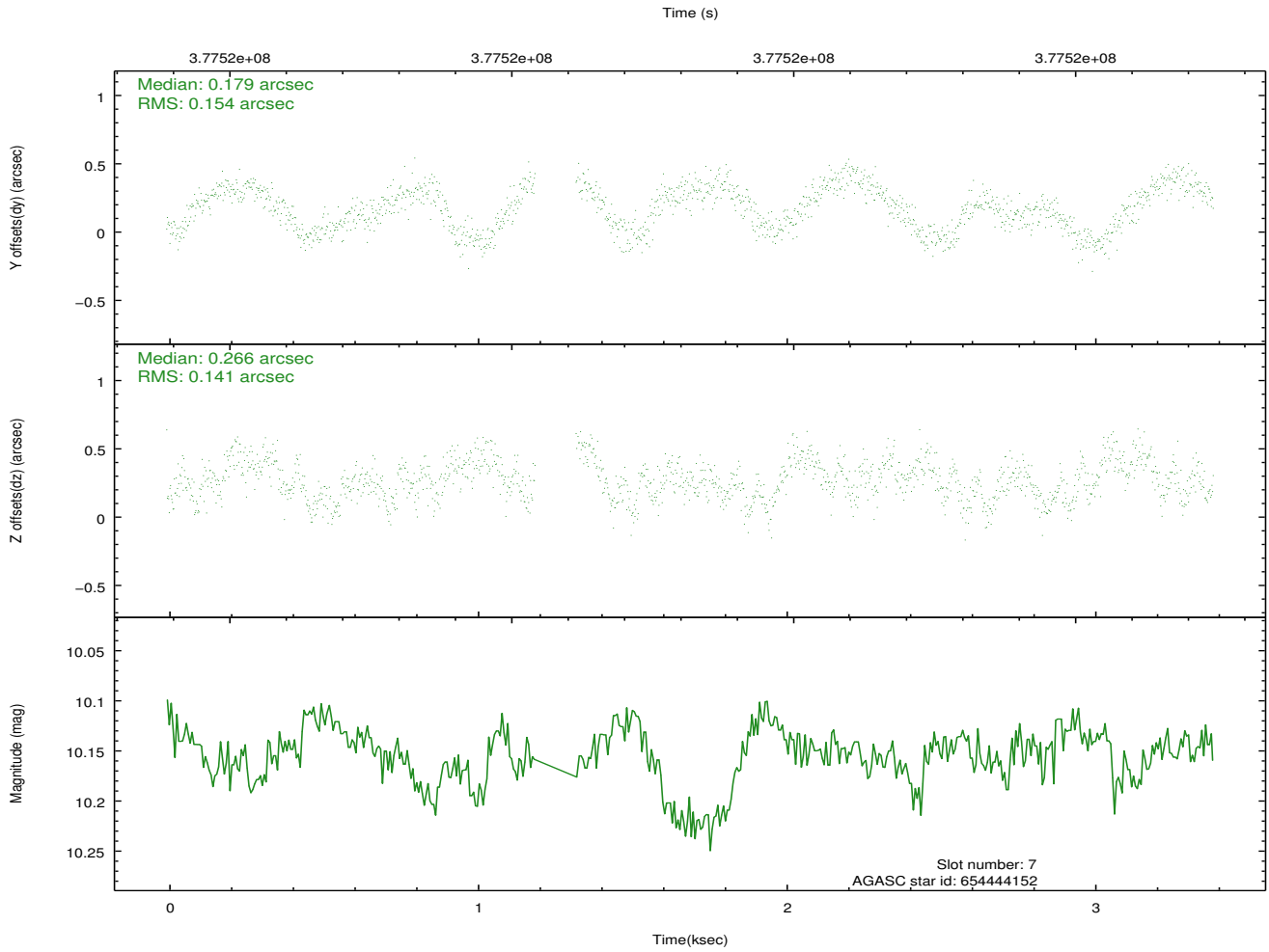
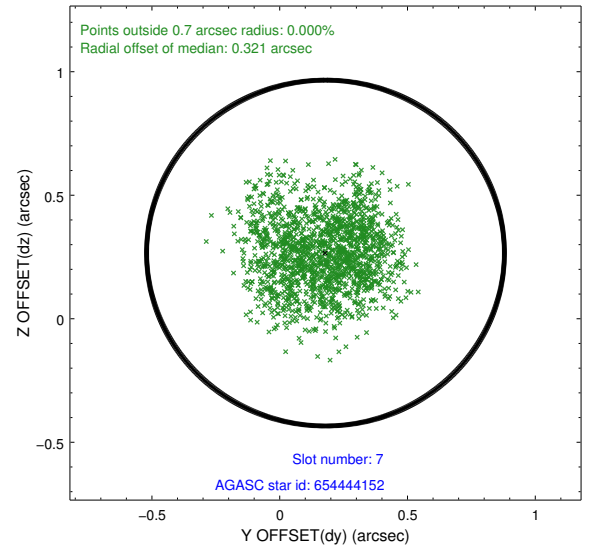
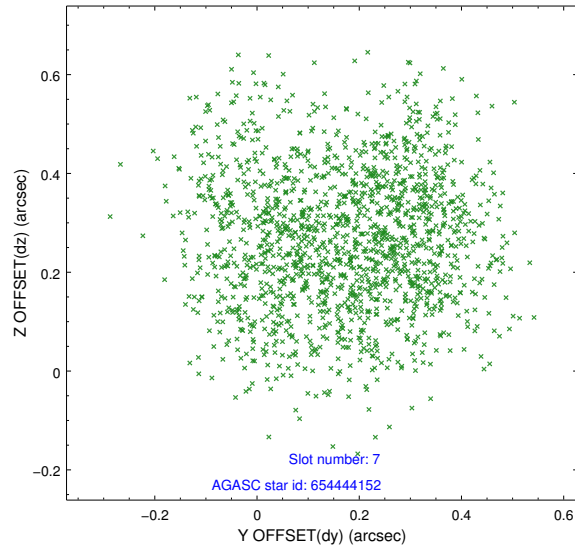
Time (s)



2.4.4 Slot 6

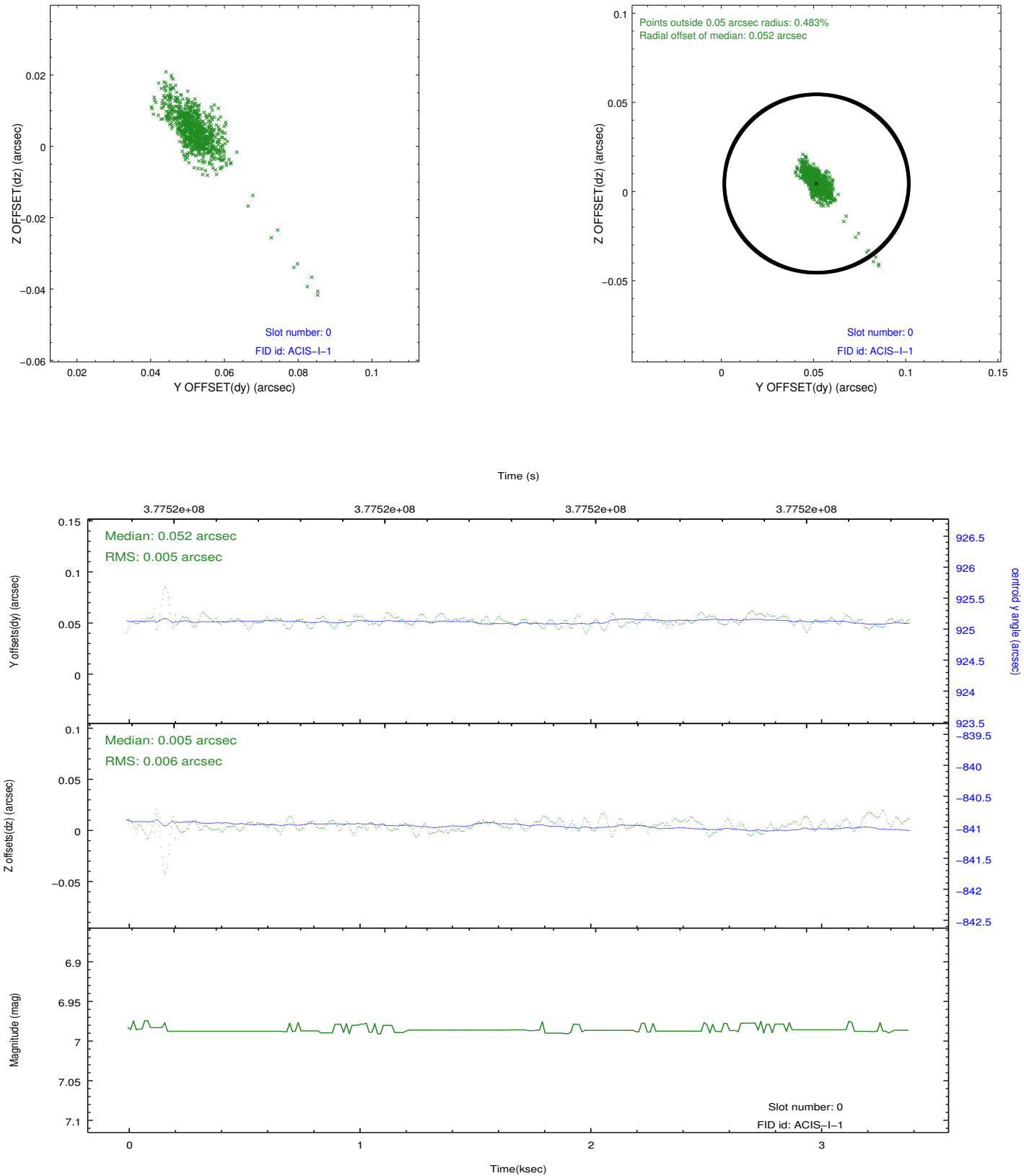


2.4.5 Slot 7

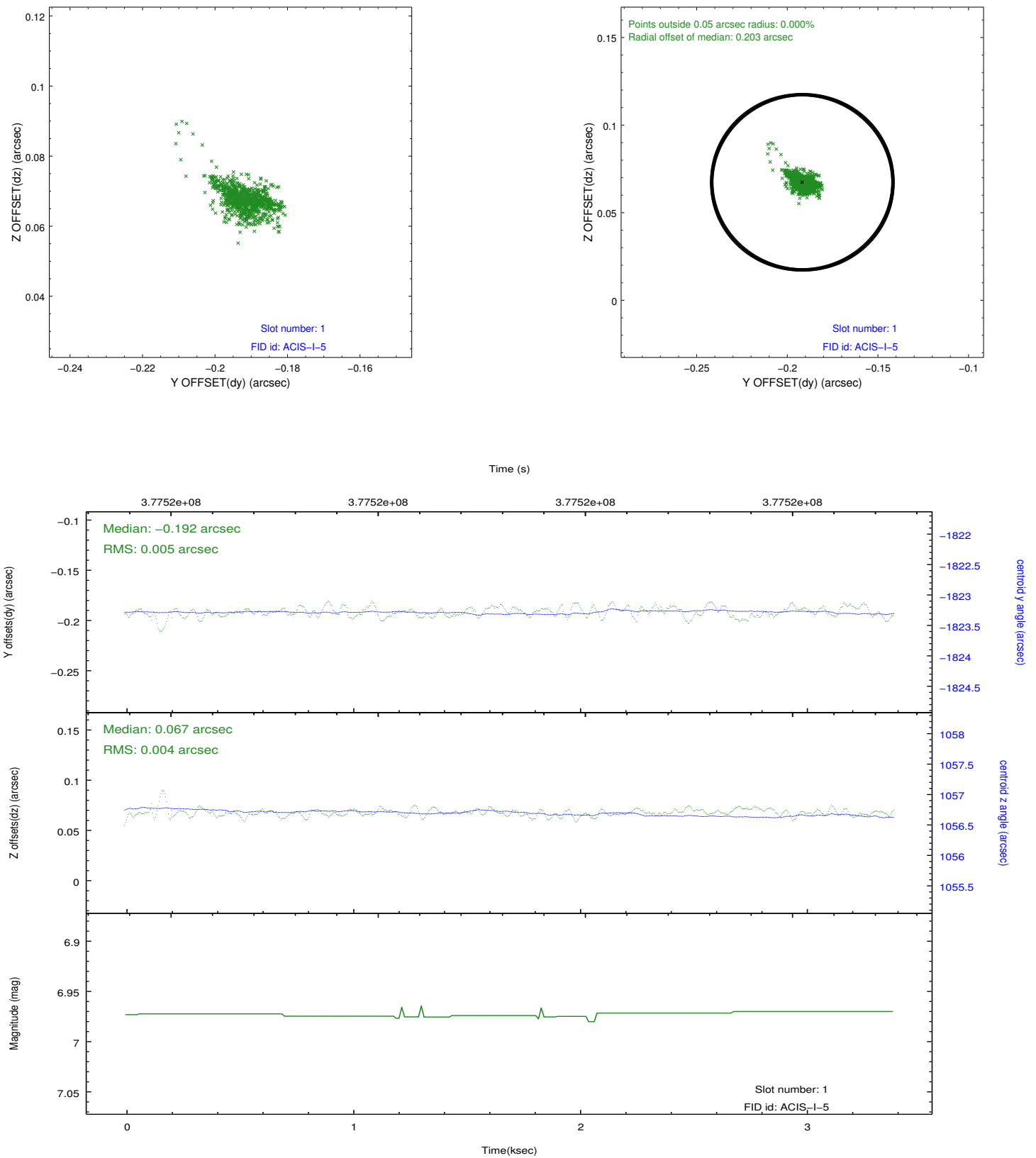


2.5 FID Slots

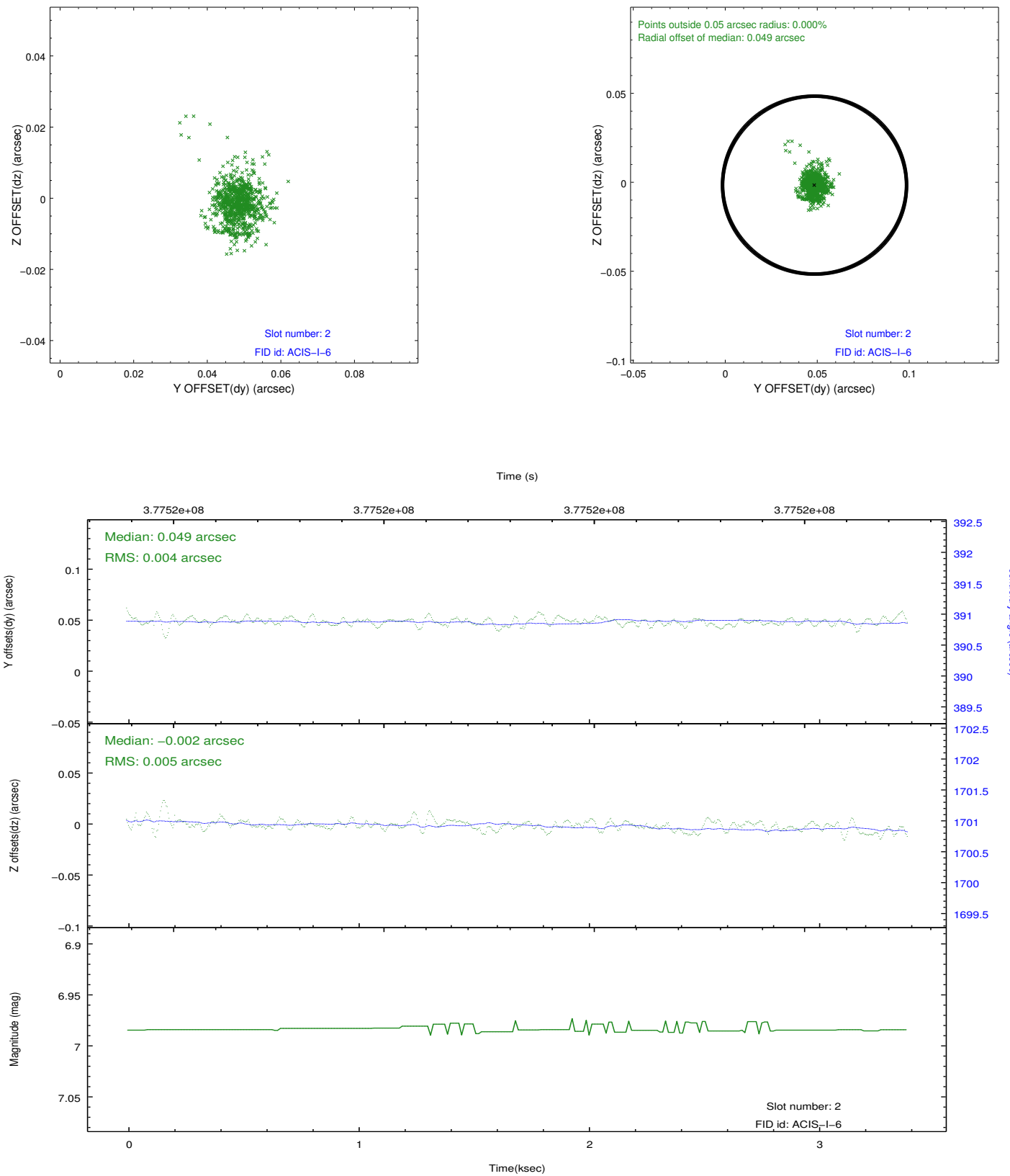
2.5.1 Slot 0



2.5.2 Slot 1



2.5.3 Slot 2



A Summary

A.1 Status

V&V Scientist	Jen Lauer
V&V Date (YYYY-MM-DD)	2012.06.21
V&V Edition	1
V&V Disposition and Status	OK
V&V Charge Time	2.5544000196457

A.2 Comments