

V&V Reference Report

L2 ASCDS Version : 8.4.5

Observation 11586 - L2 Version 2
Chandra X-Ray Center

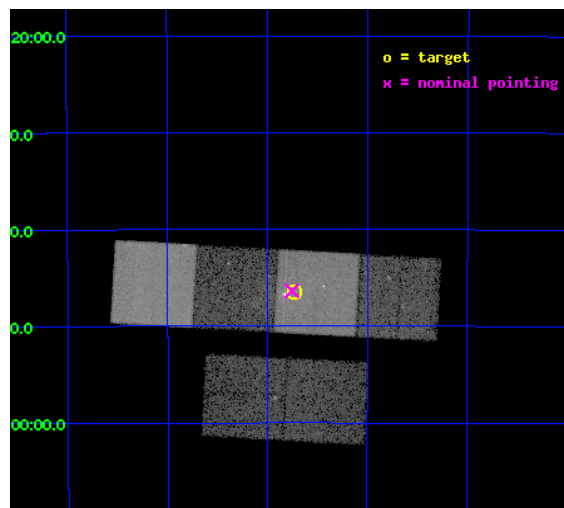
L2 Processing Date : Jun 18 2012

Contents

1	Front	2
2	OBI	3
2.1	OBI	3
2.1.1	Images	3
2.1.2	Bias	3
2.1.3	Parameters	4
2.1.4	Events	4
2.2	Compared Parameters	5
2.3	Aspect	6
2.4	Star Slots	9
2.4.1	Slot 3	9
2.4.2	Slot 4	10
2.4.3	Slot 5	11
2.4.4	Slot 6	12
2.4.5	Slot 7	13
2.5	FID Slots	14
2.5.1	Slot 0	14
2.5.2	Slot 1	15
2.5.3	Slot 2	16
A	Summary	17
A.1	Status	17
A.2	Comments	17

1 Front

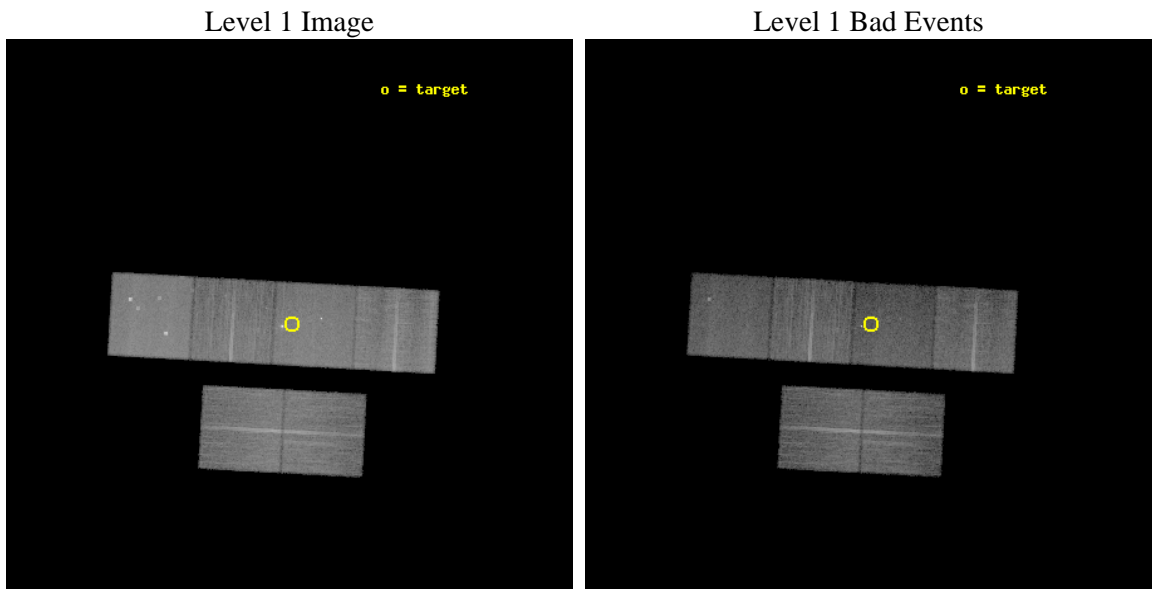
seq_num	702172	Sequence number
obs_id	11586	Observation id
title	Variability and particle acceleration in the jet of Pictor A	Propo
observer	Dr Martin Hardcastle	Principal investigator
object	Pictor A Jet	Source name
dtcycle	0	
cycle	P	events from which exps? Prim/Second/Both
ra_targ	79.933333	Observer's specified target RA [deg]
dec_targ	-45.775556	Observer's specified target Dec [deg]
ra_nom	79.939080156989	Nominal RA [deg]
dec_nom	-45.772774551351	Nominal Dec [deg]
roll_nom	3.1607408821418	Nominal Roll [deg]
revision	2	Processing version of data
ontime	14440.207614303	Sum of GTIs [s]
livetime	14257.357010641	Livetime [s]
ontime2	14440.248654306	Sum of GTIs [s]
ontime3	14440.084494293	Sum of GTIs [s]
ontime5	14440.166574299	Sum of GTIs [s]
ontime6	14440.125534296	Sum of GTIs [s]
ontime7	14440.207614303	Sum of GTIs [s]
ontime8	14440.043454289	Sum of GTIs [s]
l2events	205354	Number of level 2 events



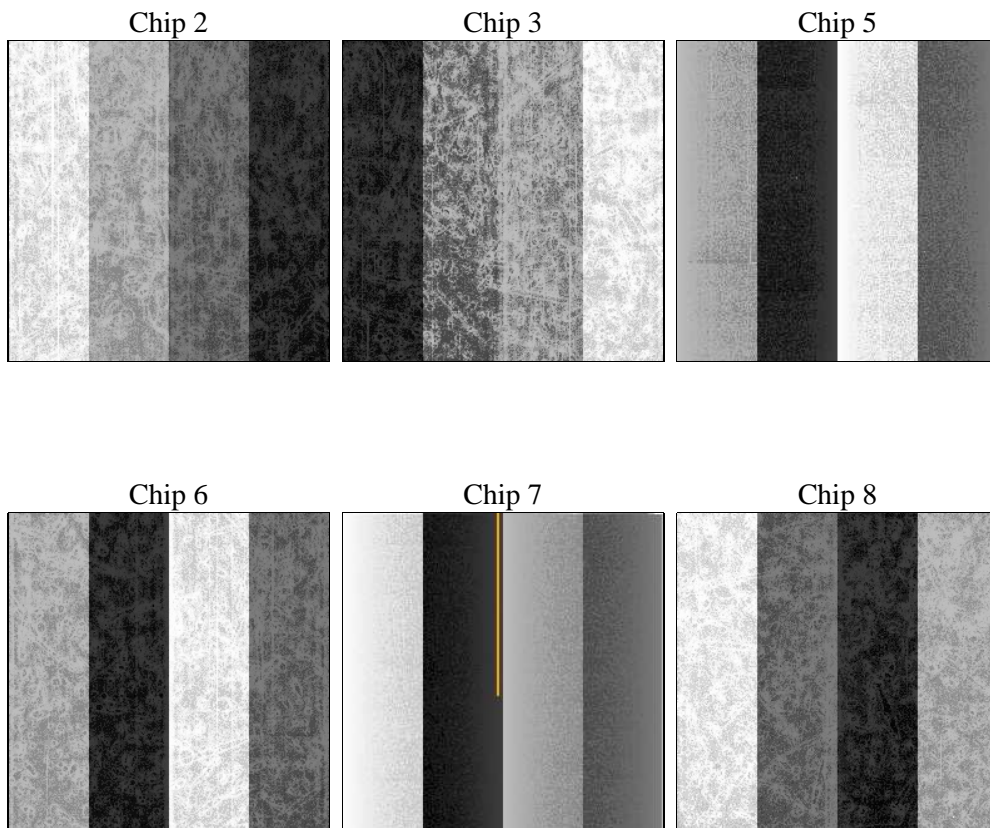
2 OBI

2.1 OBI

2.1.1 Images



2.1.2 Bias



2.1.3 Parameters

obi_num	0	Obi number	sched_exp_time	14400.000000	[s] Scheduled observation exposure time
ascdsver	8.4.5	Processing system revision	ontime	14440.207614303	Sum of GTIs [s]
caldsver	4.4.10	 	ontime2	14440.248654306	Sum of GTIs [s]
date	2012-06-18T06:37:52	Date and time of file creation	ontime3	14440.084494293	Sum of GTIs [s]
revision	2	Processing version of data	ontime5	14440.166574299	Sum of GTIs [s]
			ontime6	14440.125534296	Sum of GTIs [s]
			ontime7	14440.207614303	Sum of GTIs [s]
			ontime8	14440.043454289	Sum of GTIs [s]
			l1events	888839	Number of level 1 events

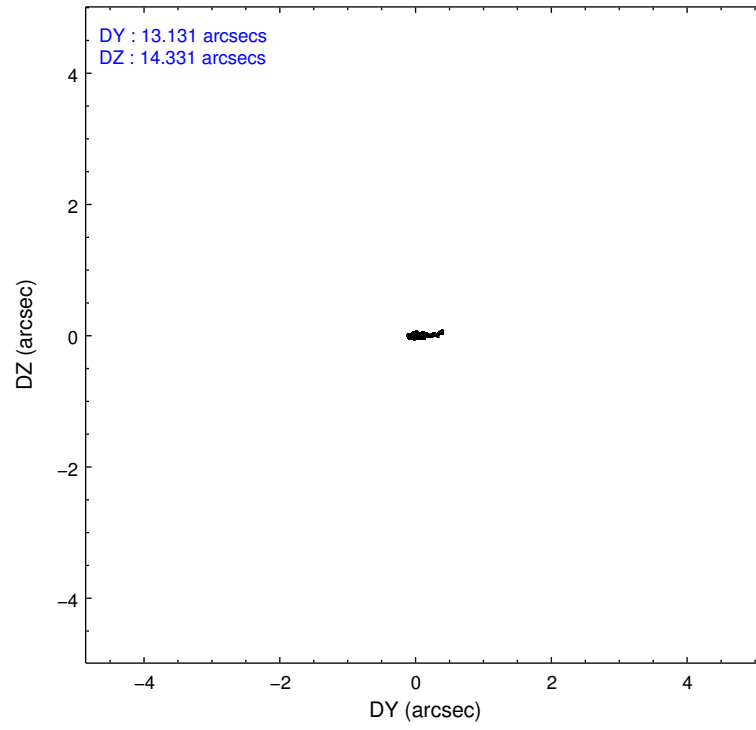
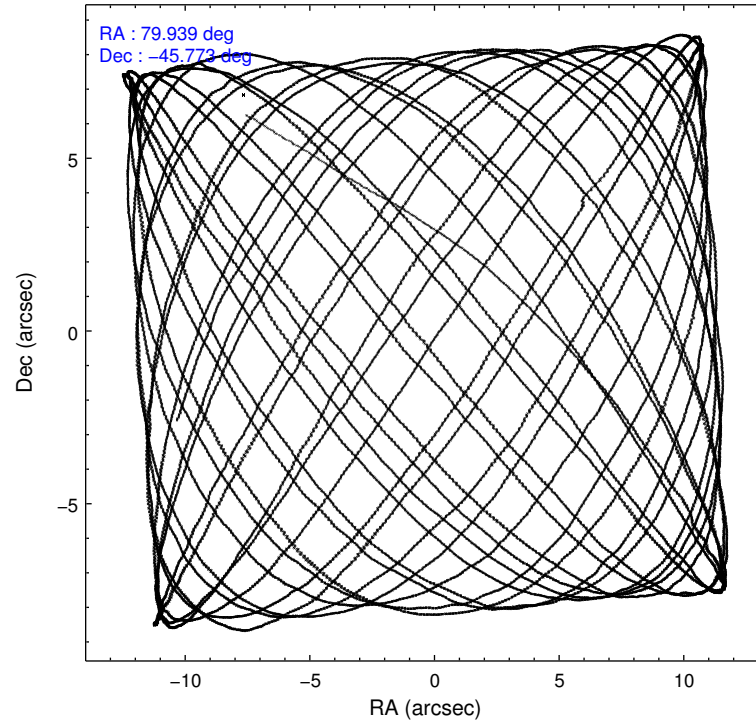
2.1.4 Events

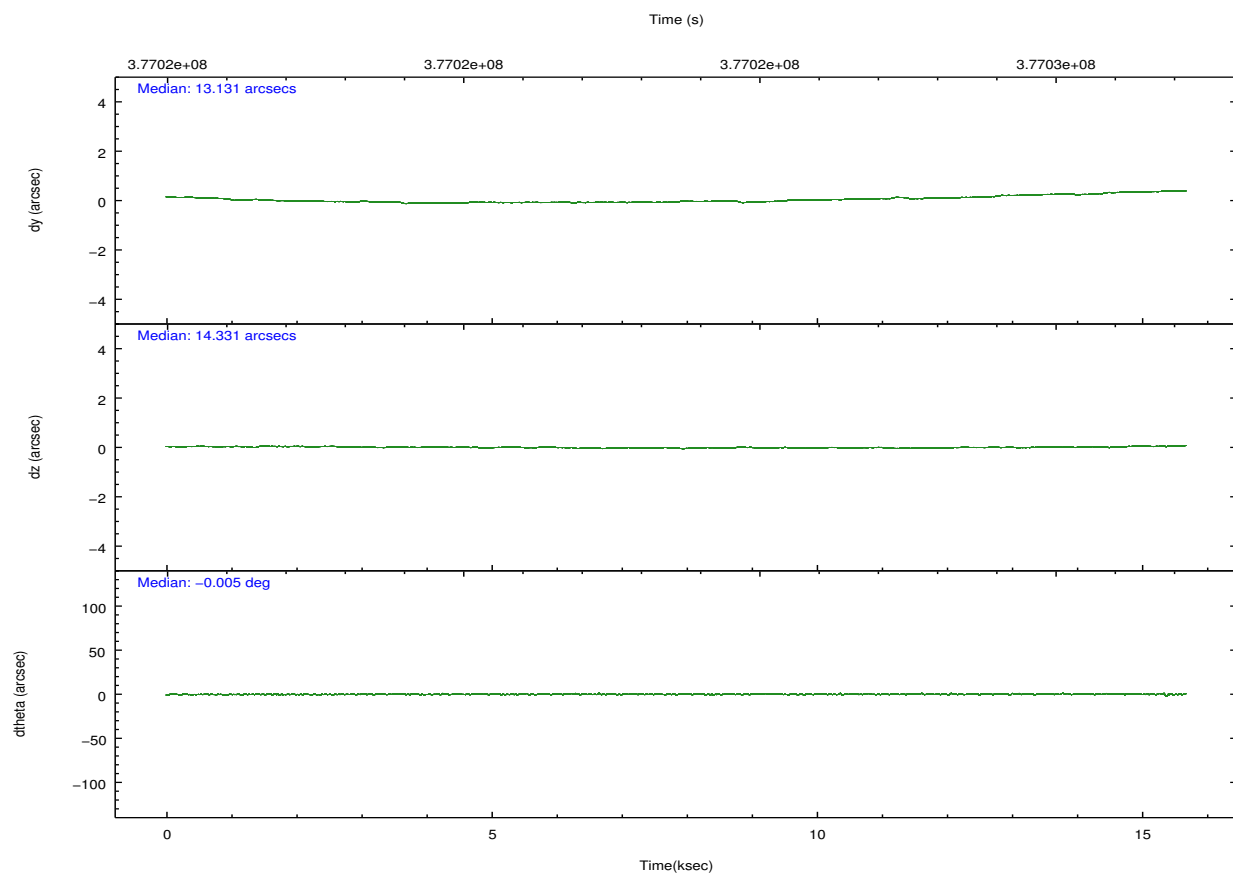
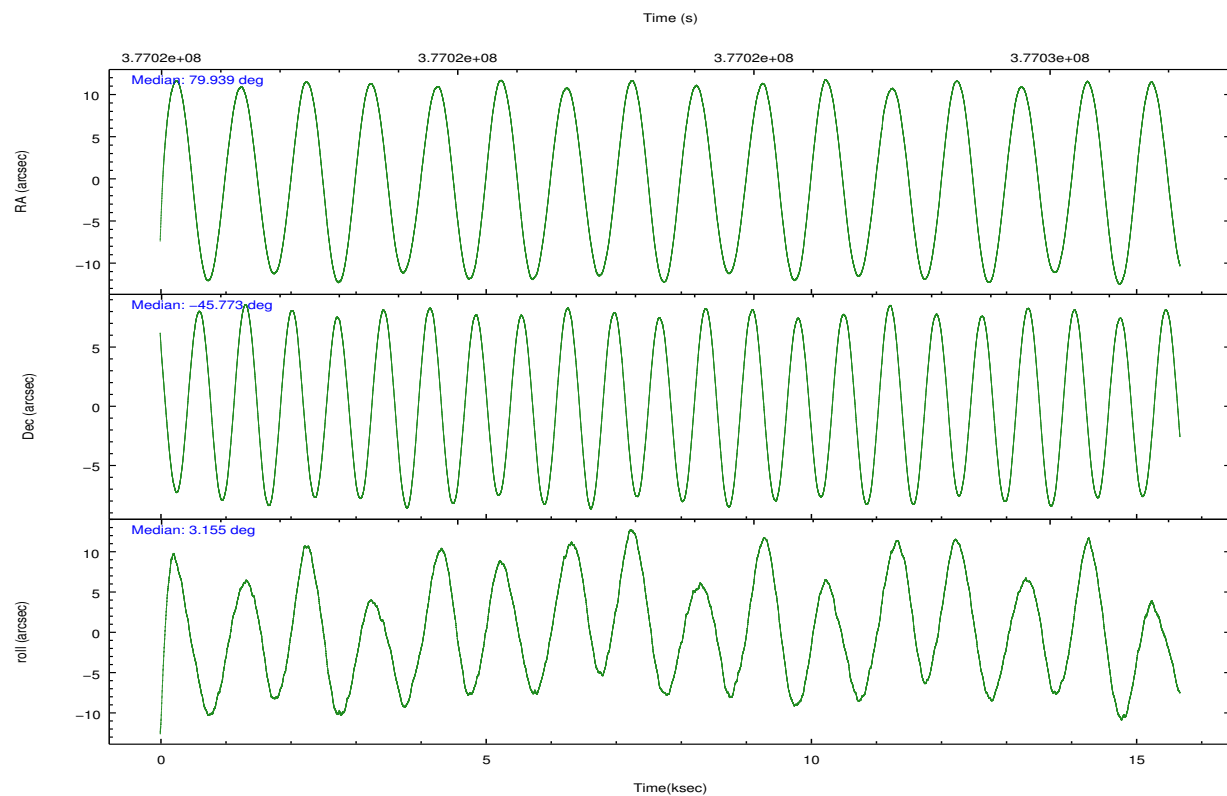
	ccd 2	ccd 3	ccd 5	ccd 6	ccd 7	ccd 8		ccd 2	ccd 3	ccd 5	ccd 6	ccd 7	ccd 8
level 1 events	132282	124333	186645	129383	156374	159822	grade 0 events	4663	4154	11446	5497	8132	12233
rejected events	119175	112499	92234	115009	82323	118897		3%	3%	6%	4%	5%	7%
rejected %	90%	90%	49%	88%	52%	74%	grade 1 events	87	90	905	79	317	148
								0%	0%	0%	0%	0%	0%
							grade 2 events	3218	2670	28429	3137	15441	9599
								2%	2%	15%	2%	9%	6%
							grade 3 events	1419	1318	3568	1436	6849	4377
								1%	1%	1%	1%	4%	2%
							grade 4 events	1406	1313	3446	1458	6750	3929
								1%	1%	1%	1%	4%	2%
							grade 5 events	4646	5150	13760	5306	15733	7509
								3%	4%	7%	4%	10%	4%
							grade 6 events	2404	2381	47556	2855	36908	10806
								1%	1%	25%	2%	23%	6%
							grade 7 events	114439	107257	77535	109615	66244	111221
								86%	86%	41%	84%	42%	69%

2.2 Compared Parameters

Parameter	Planned	Actual	Parameter	Planned	Actual
Instrument	ACIS	ACIS	Obspar format version number	7	7
Detector	ACIS-235678	ACIS-235678	Obspar file type	PREDICTED	ACTUAL
Grating	NONE	NONE	Obspar update status	NONE	UPDATED
Data mode	FAINT	FAINT	CCD I0 on	N	N
Observation mode	POINTING	POINTING	CCD I1 on	N	N
[deg] Pointing RA	79.906512	79.93908015698854	CCD I2 on	O2	Y
[deg] Pointing Dec	-45.788046	-45.77277455135051	CCD I3 on	O3	Y
[deg] Pointing Roll	2.980772	3.160740882141806	CCD S0 on	N	N
[mm] SIM focus pos	-0.684267	-0.6828225247311905	CCD S1 on	O1	Y
[mm] SIM defocus	0	0.001444936568705701	CCD S2 on	Y	Y
[mm] SIM translation stage pos	-190.132523	-190.1400660498719	CCD S3 on	Y	Y
[mm] SIM translation stage offset	0	0.00754346686406393	CCD S4 on	O4	Y
[s] Observation start time (MET)	377016830.184000	377014994.0645	CCD S5 on	N	N
Observation start date	2009-12-12T14:52:44	2009-12-12T14:23:14	Number of optional ACIS chips dropped	0	0
[s] Observation end time (MET)	377031230.184000	377032214.57786	On-chip summing requested	N	N
Observation end date	2009-12-12T18:52:44	2009-12-12T19:10:14	Subarray requested	NONE	NONE
Read mode	TIMED	TIMED	Alternating exposures requested	N	N
			[s] Primary exposure time	0.000000	3.2

2.3 Aspect



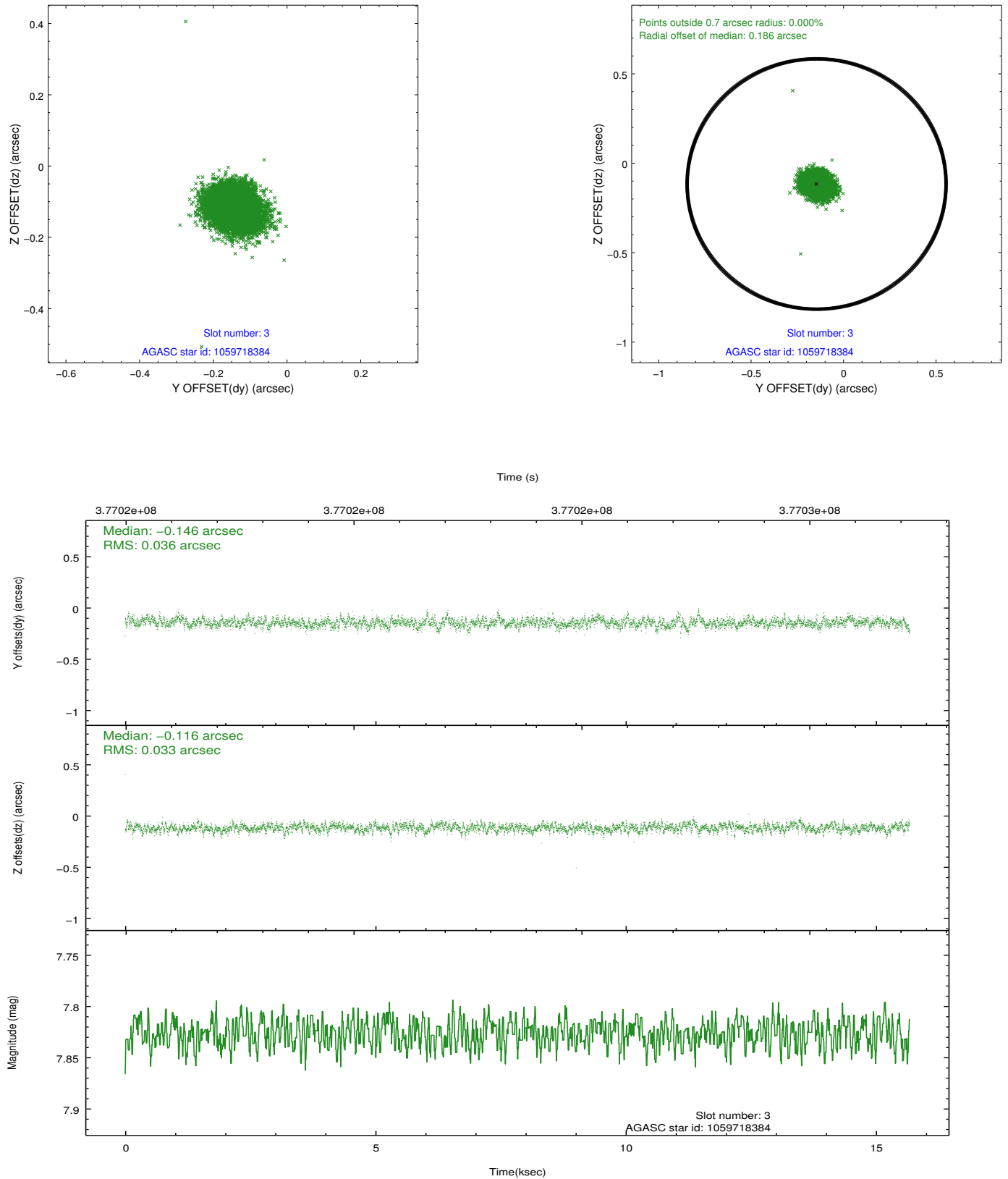


Slot Statistics

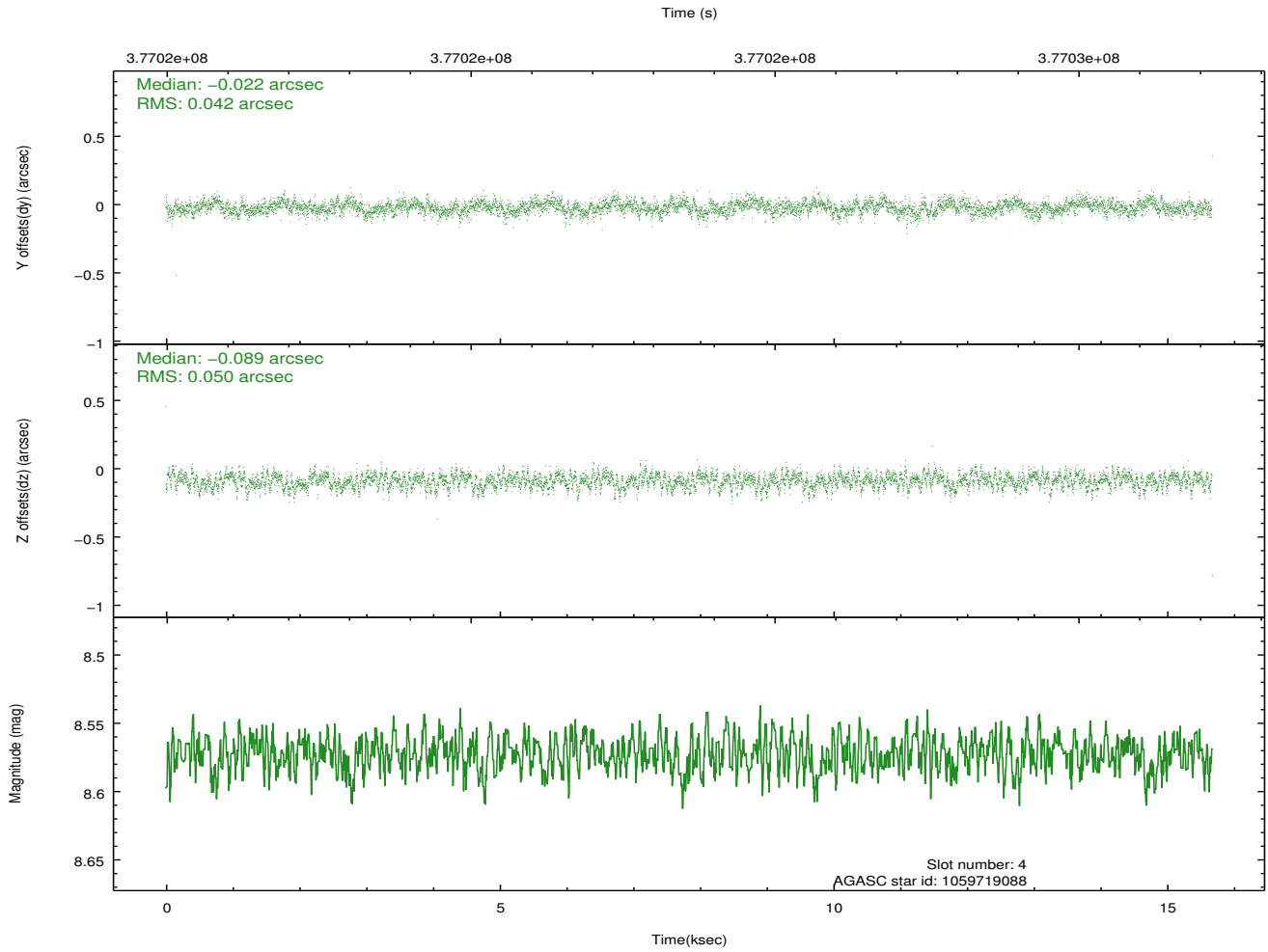
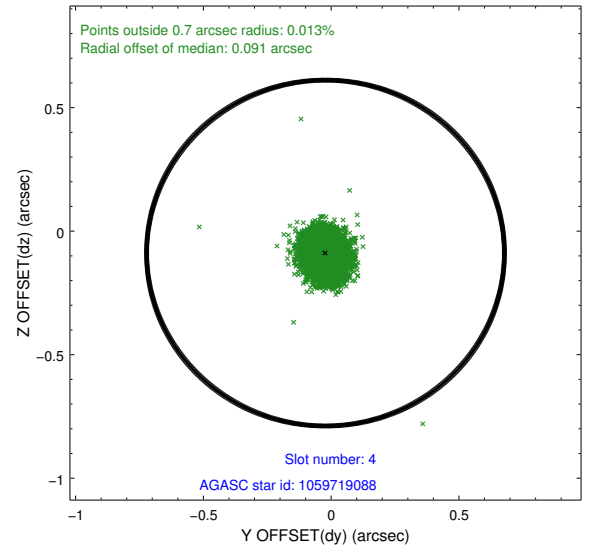
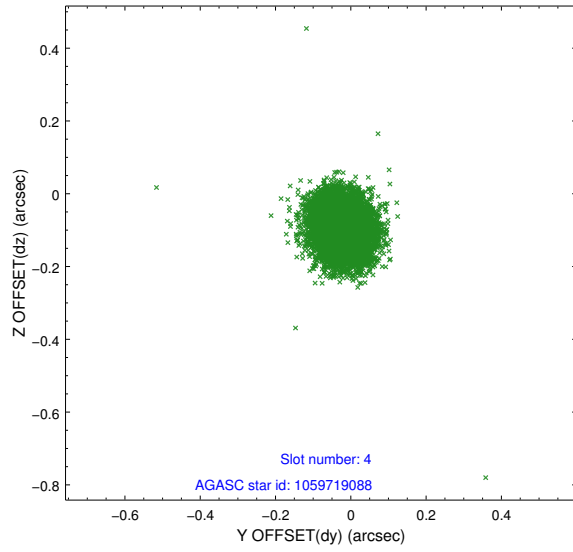
slot	status	id	mag	n_pts	med_dy	med_dz	dr1	dr2	ra	dec	mean_y	mean_z
0	FID	ACIS-S-2	6.89	3824	-0.051	-0.038	0.007	0.012	0.000000	0.000000	-766.12	-1735.74
1	FID	ACIS-S-4	6.98	3823	0.178	0.035	0.008	0.018	0.000000	0.000000	2147.23	172.56
2	FID	ACIS-S-5	7.01	3823	-0.159	0.012	0.007	0.014	0.000000	0.000000	-1818.74	166.47
3	GUIDE	1059718384	7.83	7647	-0.146	-0.116	0.051	0.083	80.663676	-45.411103	1981.11	1247.04
4	GUIDE	1059719088	8.57	7643	-0.022	-0.089	0.067	0.110	80.358941	-45.341185	1227.00	1544.39
5	GUIDE	1059720912	8.89	7611	0.077	-0.062	0.107	0.170	80.344072	-46.279067	995.84	-1824.49
6	GUIDE	1059720952	9.28	7626	0.138	0.096	0.104	0.172	80.539931	-46.279907	1482.21	-1856.38
7	GUIDE	1059722304	7.50	7647	-0.054	0.176	0.064	0.110	79.157586	-45.913736	-1896.83	-363.24

2.4 Star Slots

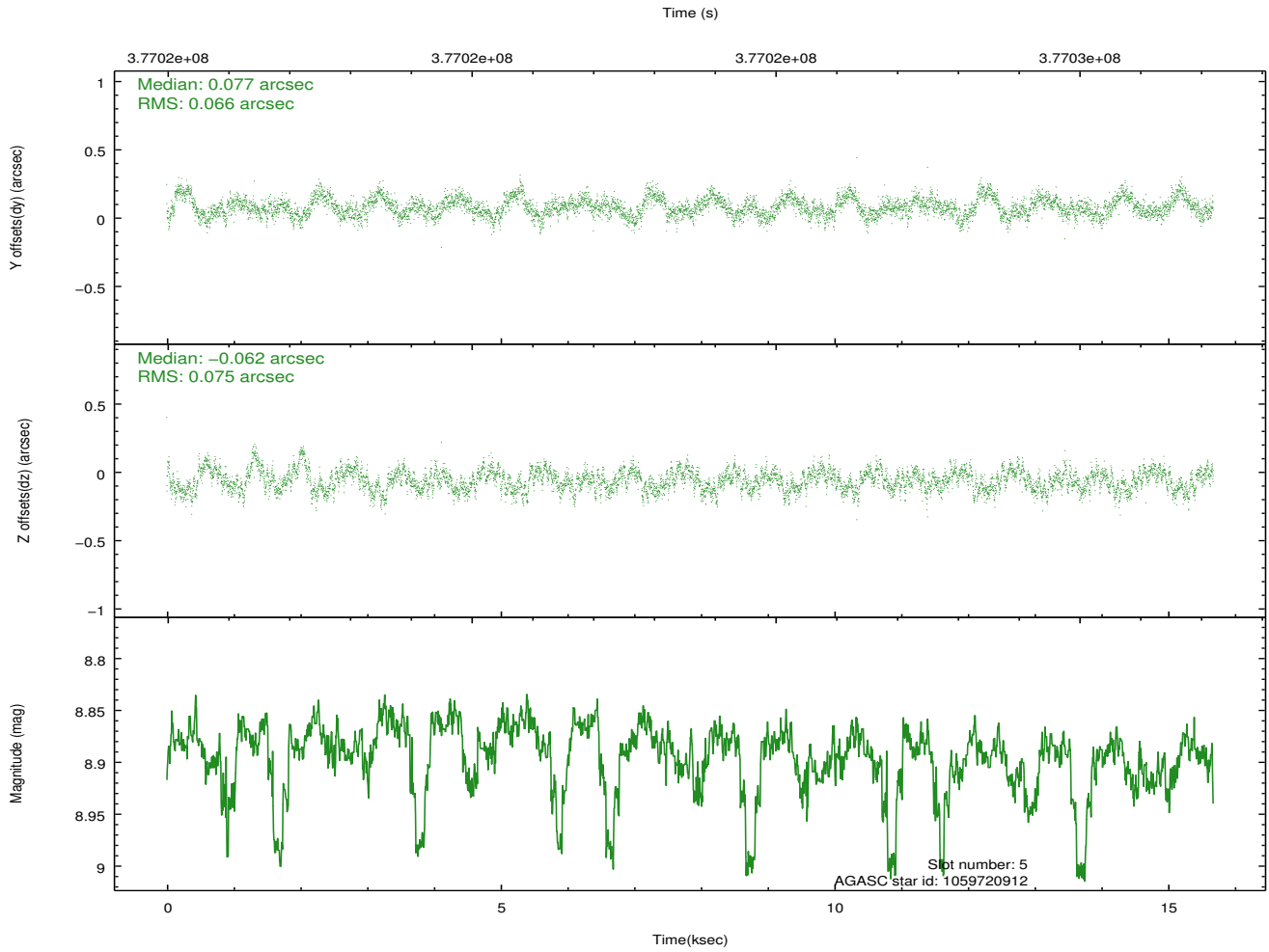
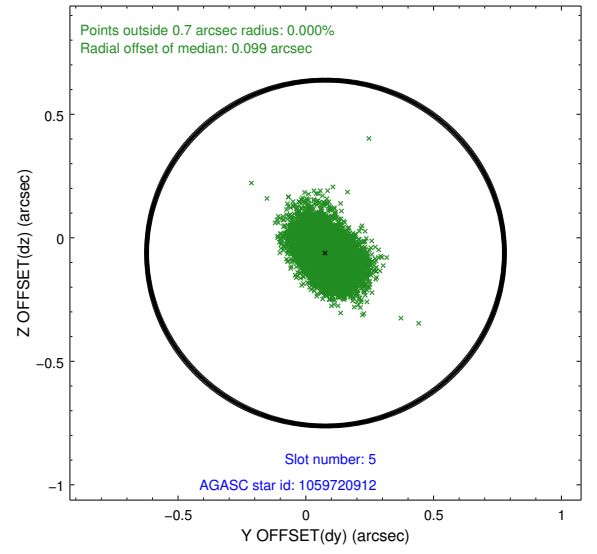
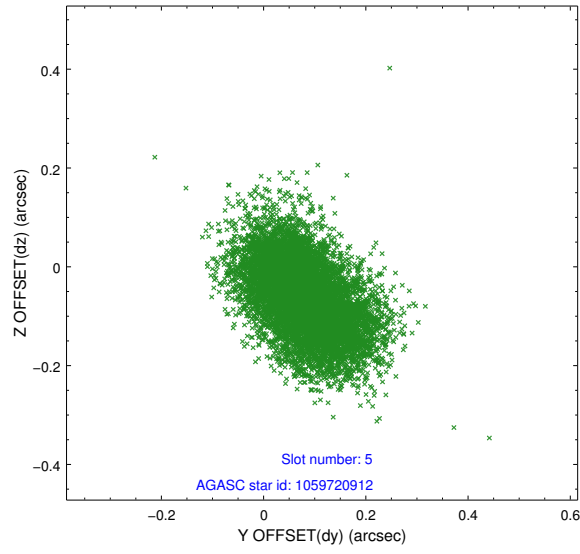
2.4.1 Slot 3



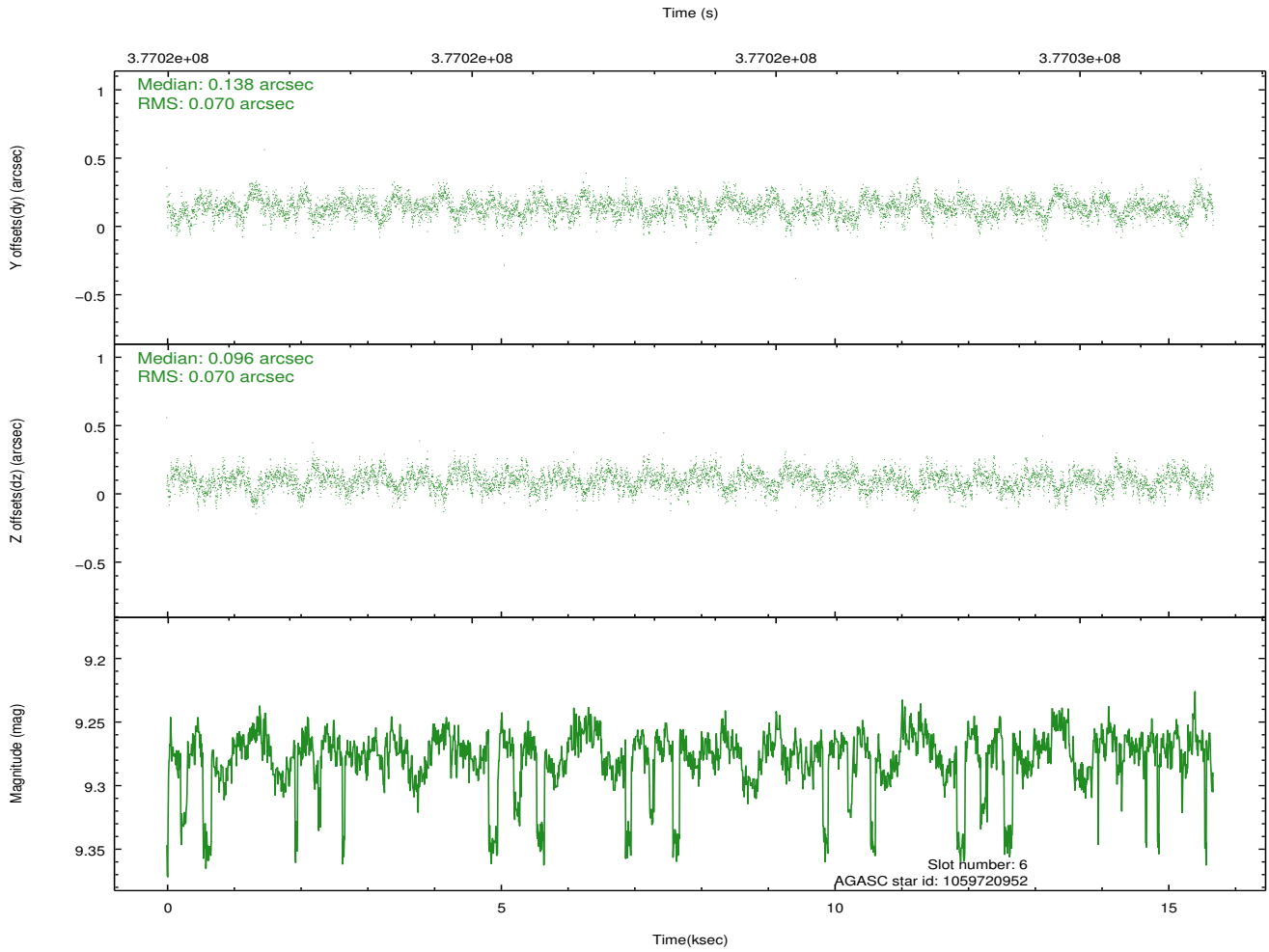
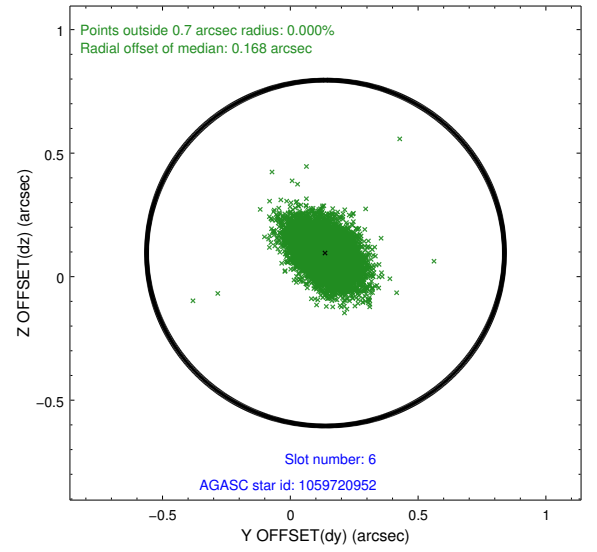
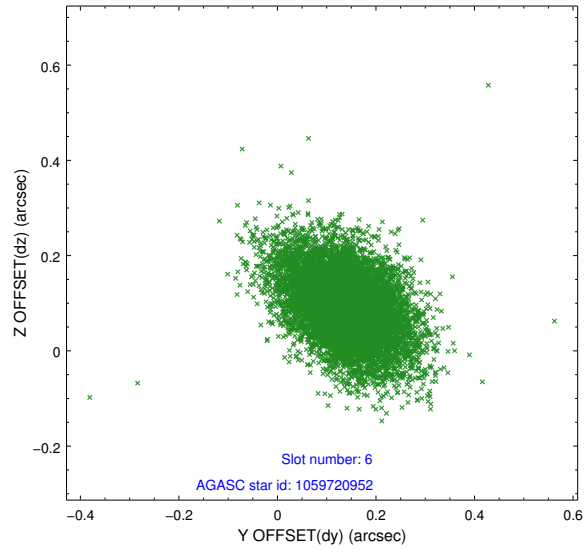
2.4.2 Slot 4



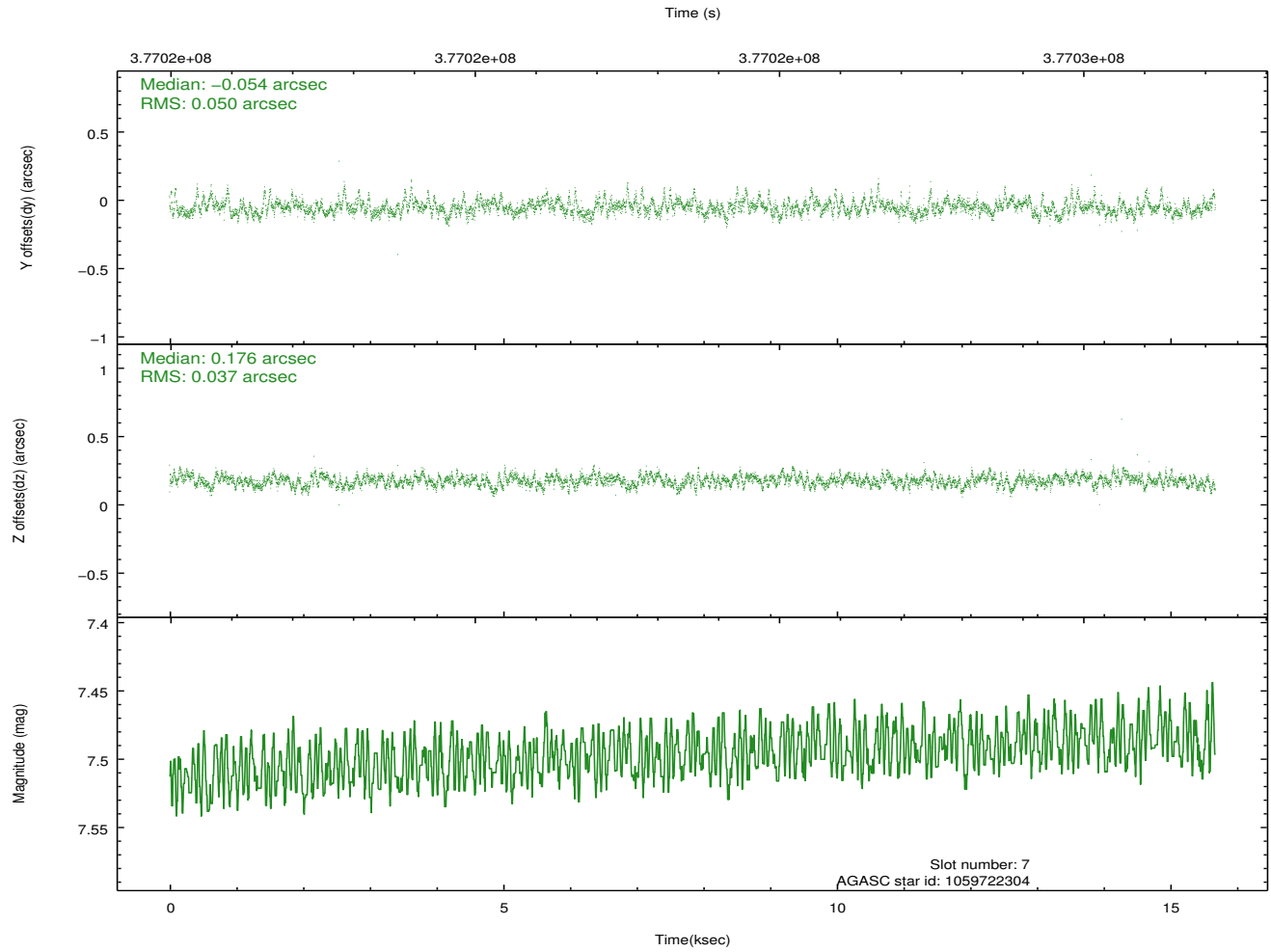
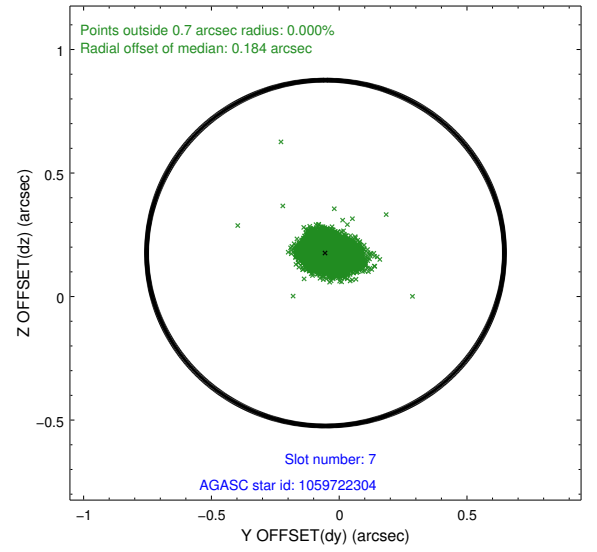
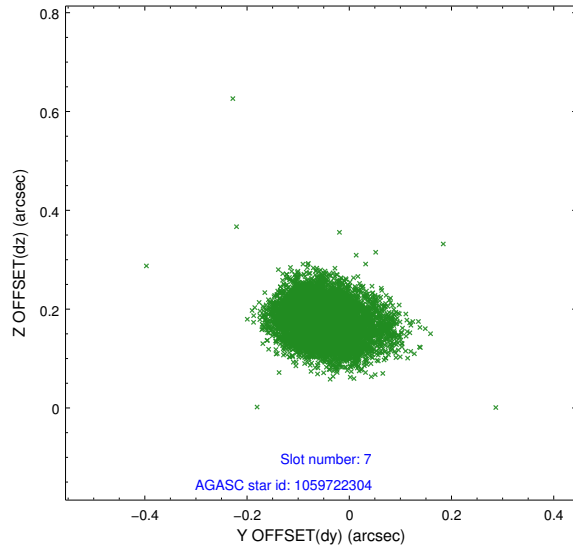
2.4.3 Slot 5



2.4.4 Slot 6

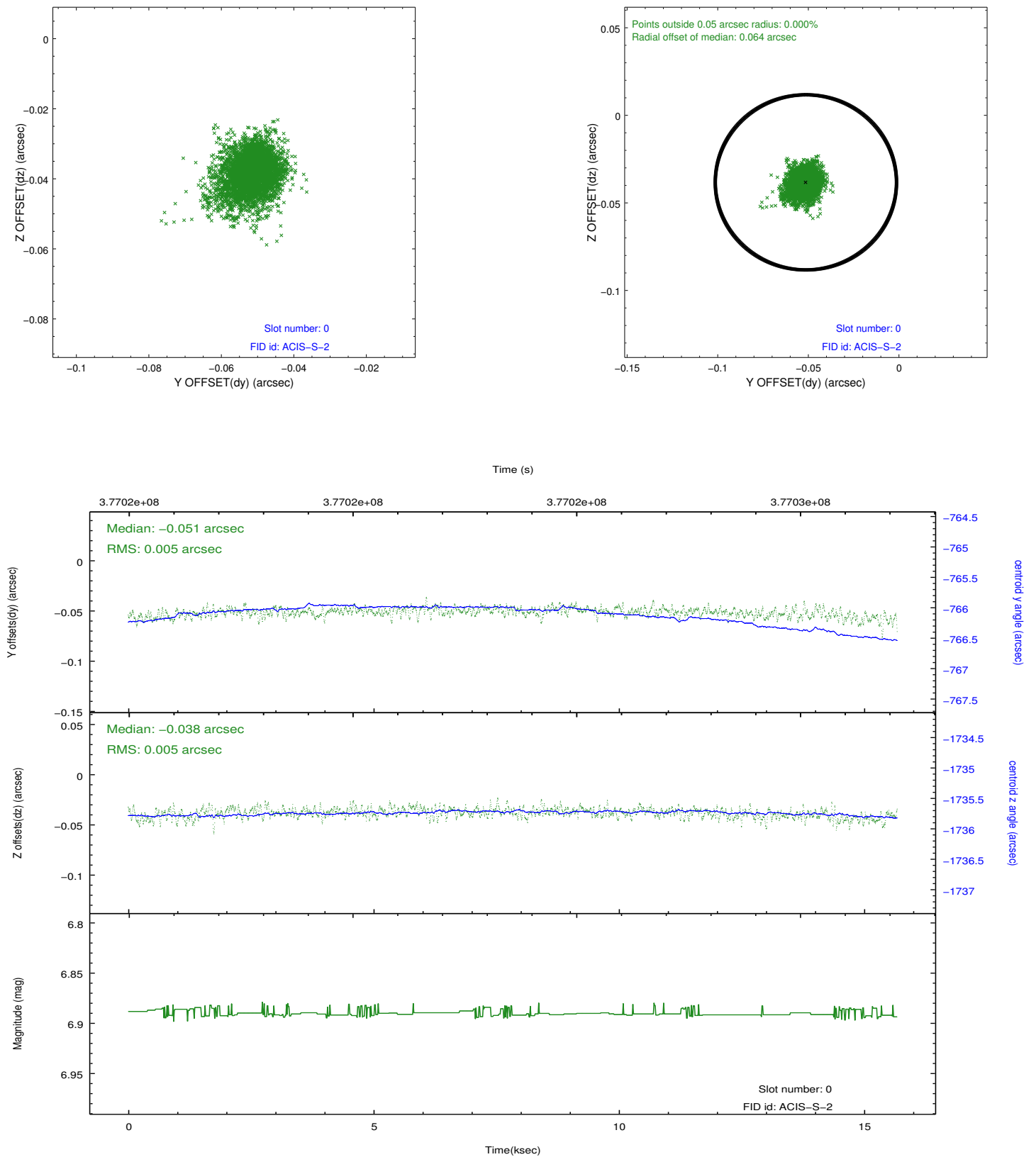


2.4.5 Slot 7

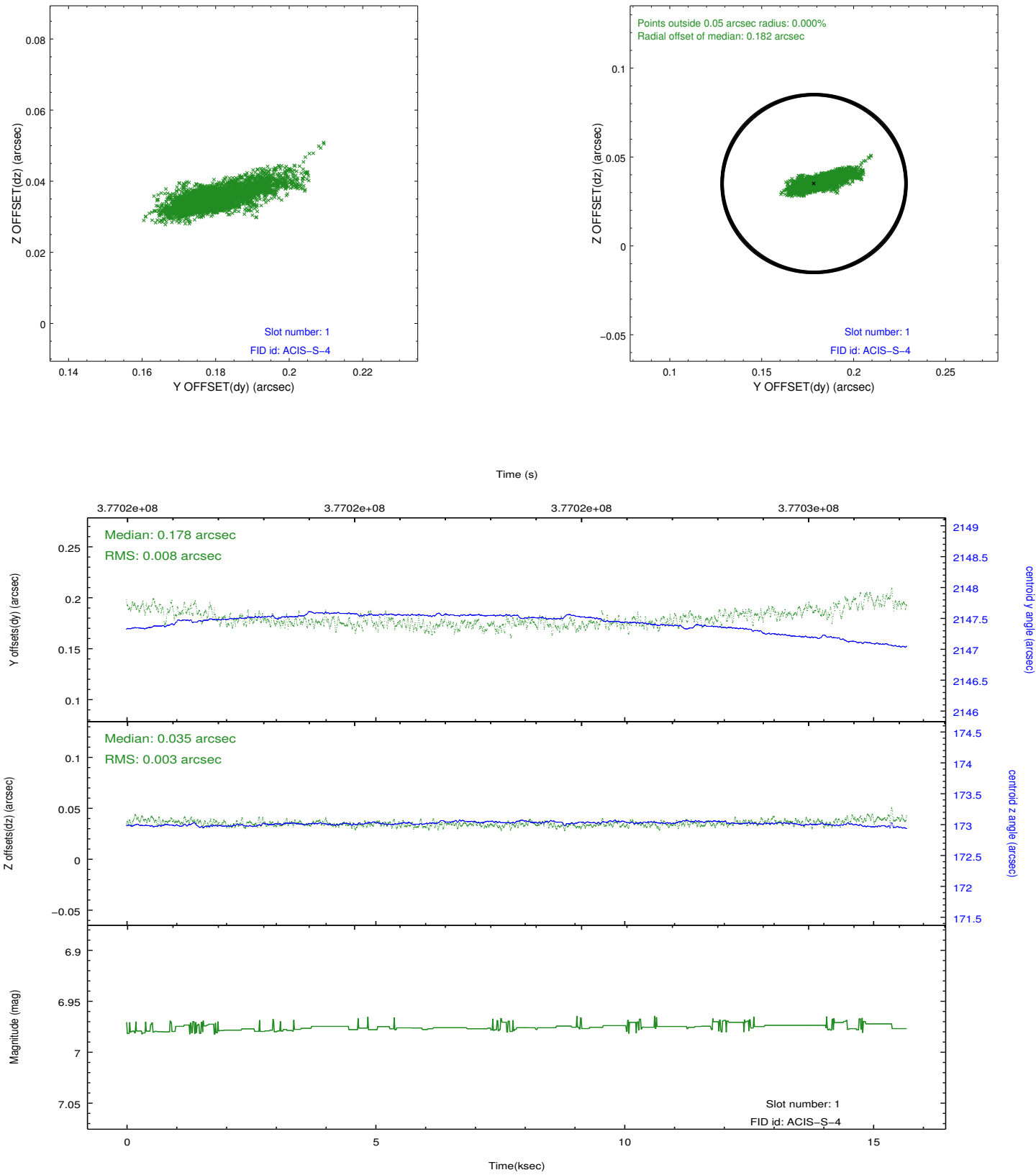


2.5 FID Slots

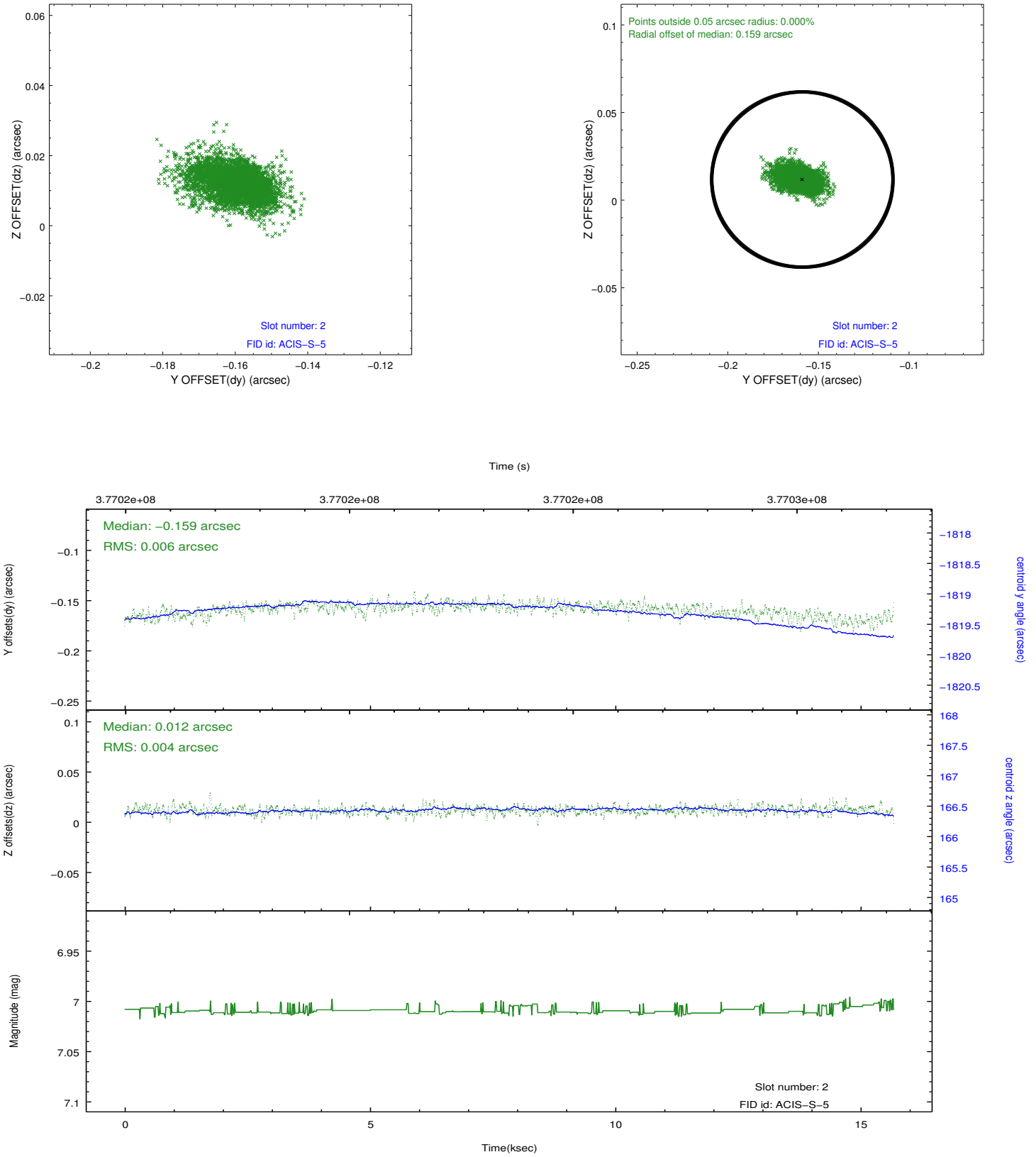
2.5.1 Slot 0



2.5.2 Slot 1



2.5.3 Slot 2



A Summary

A.1 Status

V&V Scientist	Jen Lauer
V&V Date (YYYY-MM-DD)	2012.06.21
V&V Edition	1
V&V Disposition and Status	OK
V&V Charge Time	14.440207614303

A.2 Comments

Roll preference met.