

# V&V Reference Report

## L2 ASCDS Version : 8.4.5

Observation 11544 - L2 Version 2  
Chandra X-Ray Center

L2 Processing Date : Jul 6 2012

## Contents

<b>1</b>	<b>Front</b>	<b>2</b>
<b>2</b>	<b>OBI</b>	<b>3</b>
2.1	OBI . . . . .	3
2.1.1	Images . . . . .	3
2.1.2	Bias . . . . .	3
2.1.3	Parameters . . . . .	4
2.1.4	Events . . . . .	4
2.2	Compared Parameters . . . . .	5
2.3	Aspect . . . . .	6
2.4	Star Slots . . . . .	9
2.4.1	Slot 3 . . . . .	9
2.4.2	Slot 4 . . . . .	10
2.4.3	Slot 5 . . . . .	11
2.4.4	Slot 6 . . . . .	12
2.4.5	Slot 7 . . . . .	13
2.5	FID Slots . . . . .	14
2.5.1	Slot 0 . . . . .	14
2.5.2	Slot 1 . . . . .	15
2.5.3	Slot 2 . . . . .	16
<b>A</b>	<b>Summary</b>	<b>17</b>
A.1	Status . . . . .	17
A.2	Comments . . . . .	17

# 1 Front

seq_num	702130	Sequence number
obs_id	11544	Observation id
title	The Size of Quasar Non-Thermal/X-ray Emission Regions	Proposal tit
observer	Prof. Christopher Kochanek	Principal investigator
object	RXJ1131-1231	Source name
dtcycle	0	&#160
cycle	P	events from which exps? Prim/Second/Both
ra_targ	172.965	Observer's specified target RA [deg]
dec_targ	-12.5325	Observer's specified target Dec [deg]
ra_nom	172.96337609618	Nominal RA [deg]
dec_nom	-12.527937471035	Nominal Dec [deg]
roll_nom	77.581460218601	Nominal Roll [deg]
revision	2	Processing version of data
ontime	27064.099539042	Sum of GTIs [s]
livetime	25565.245705129	Livetime [s]
ontime2	27064.099539042	Sum of GTIs [s]
ontime3	27064.099539042	Sum of GTIs [s]
ontime6	27064.099539042	Sum of GTIs [s]
ontime7	27064.099539042	Sum of GTIs [s]
ontime8	27063.358528972	Sum of GTIs [s]
l2events	56968	Number of level 2 events

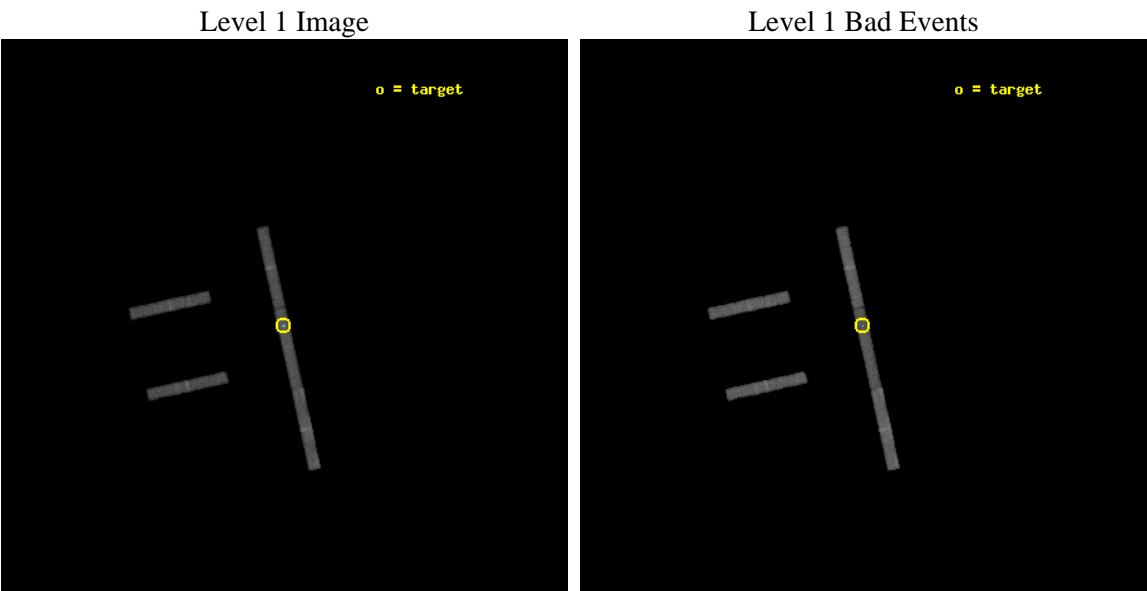




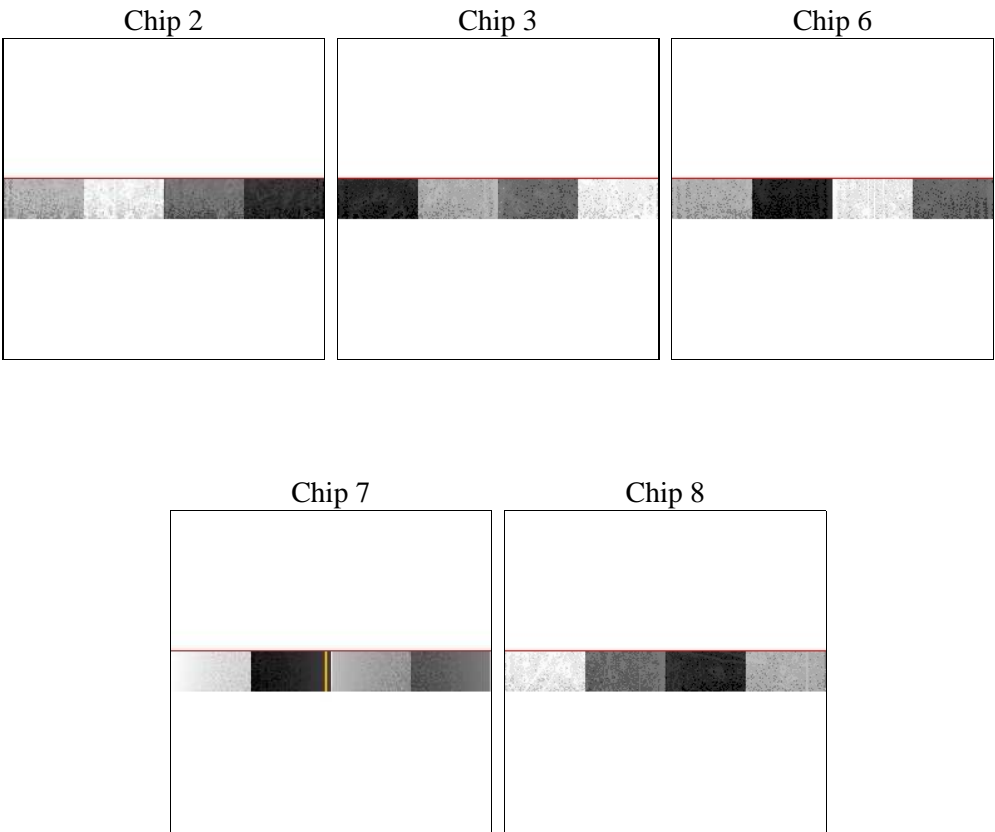
# 2 OBI

## 2.1 OBI

### 2.1.1 Images



### 2.1.2 Bias



Chip 7



Chip 8



### 2.1.3 Parameters

obi_num	0	Obi number	sched_exp_time	27000.000000	[s] Scheduled observation exposure time
ascdsver	8.4.5	Processing system revision	ontime	27064.099539042	Sum of GTIs [s]
caldsver	4.5.0	&#160	ontime2	27064.099539042	Sum of GTIs [s]
date	2012-07-06T13:43:48	Date and time of file creation	ontime3	27064.099539042	Sum of GTIs [s]
revision	2	Processing version of data	ontime6	27064.099539042	Sum of GTIs [s]
			ontime7	27064.099539042	Sum of GTIs [s]
			ontime8	27063.358528972	Sum of GTIs [s]
			l1events	203658	Number of level 1 events

### 2.1.4 Events

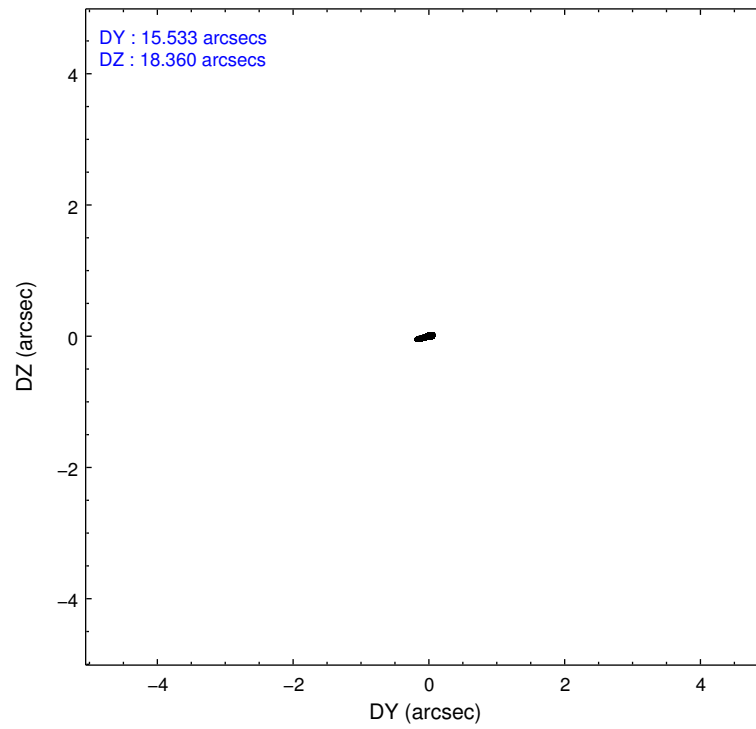
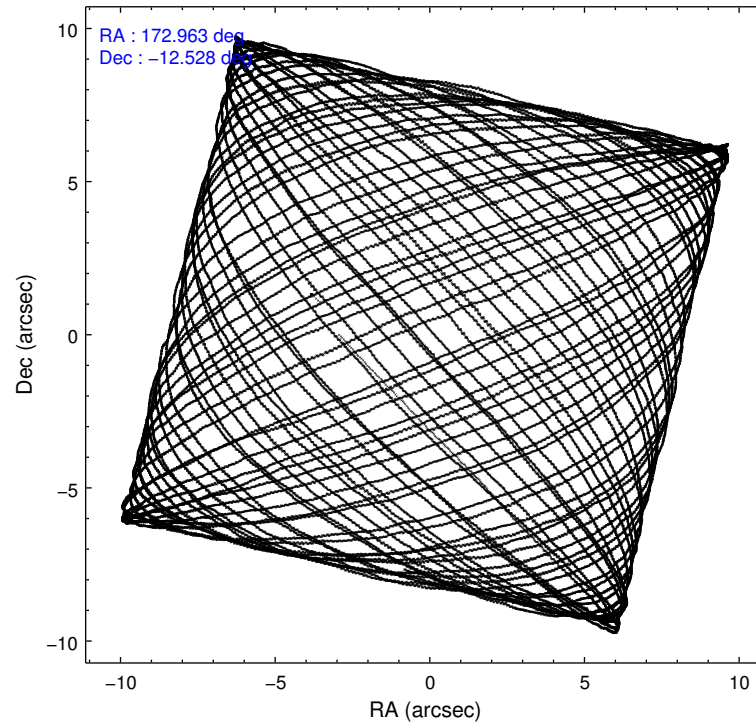
	ccd 2	ccd 3	ccd 6	ccd 7	ccd 8
level 1 events	30737	29071	31576	68515	43759
rejected events	27389	25780	27950	22166	34209
rejected %	89%	88%	88%	32%	78%

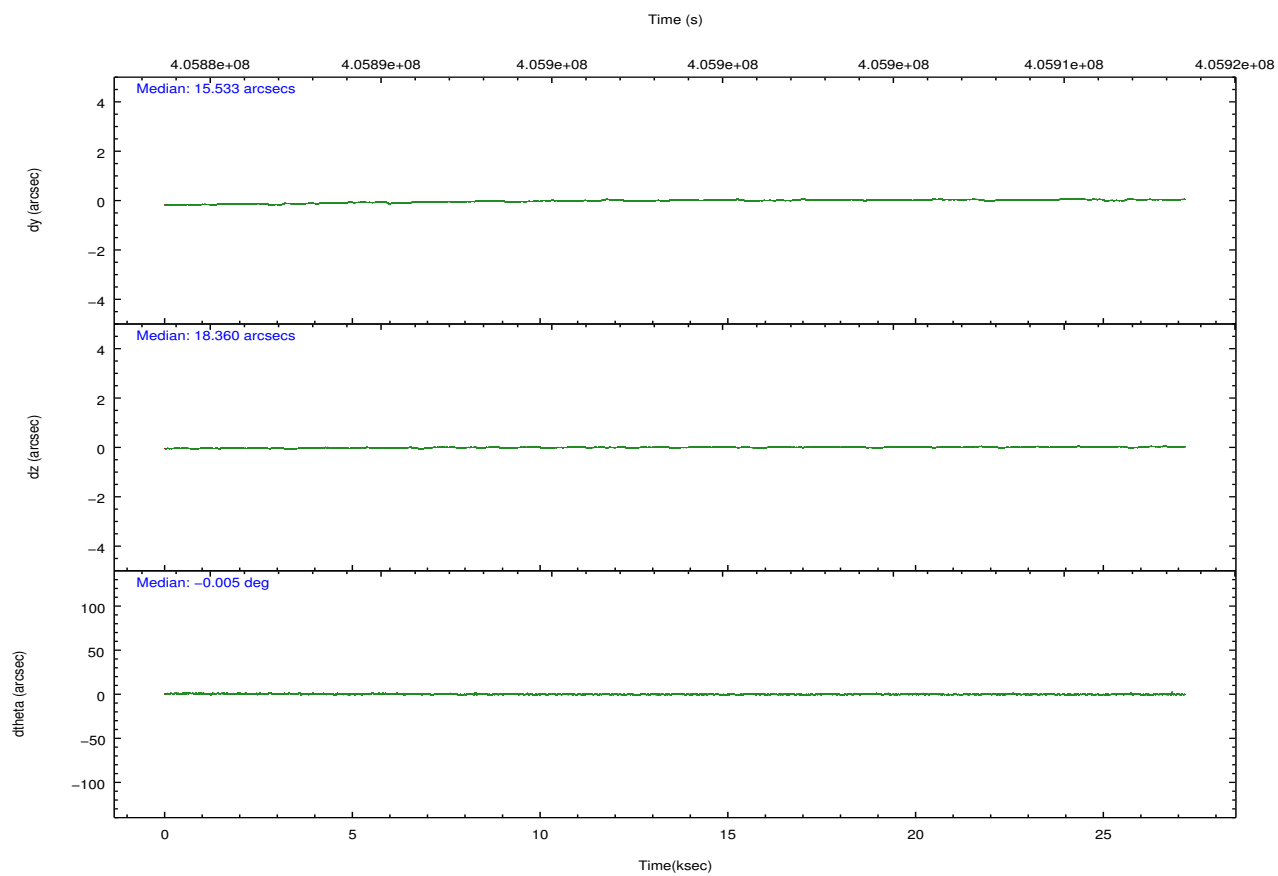
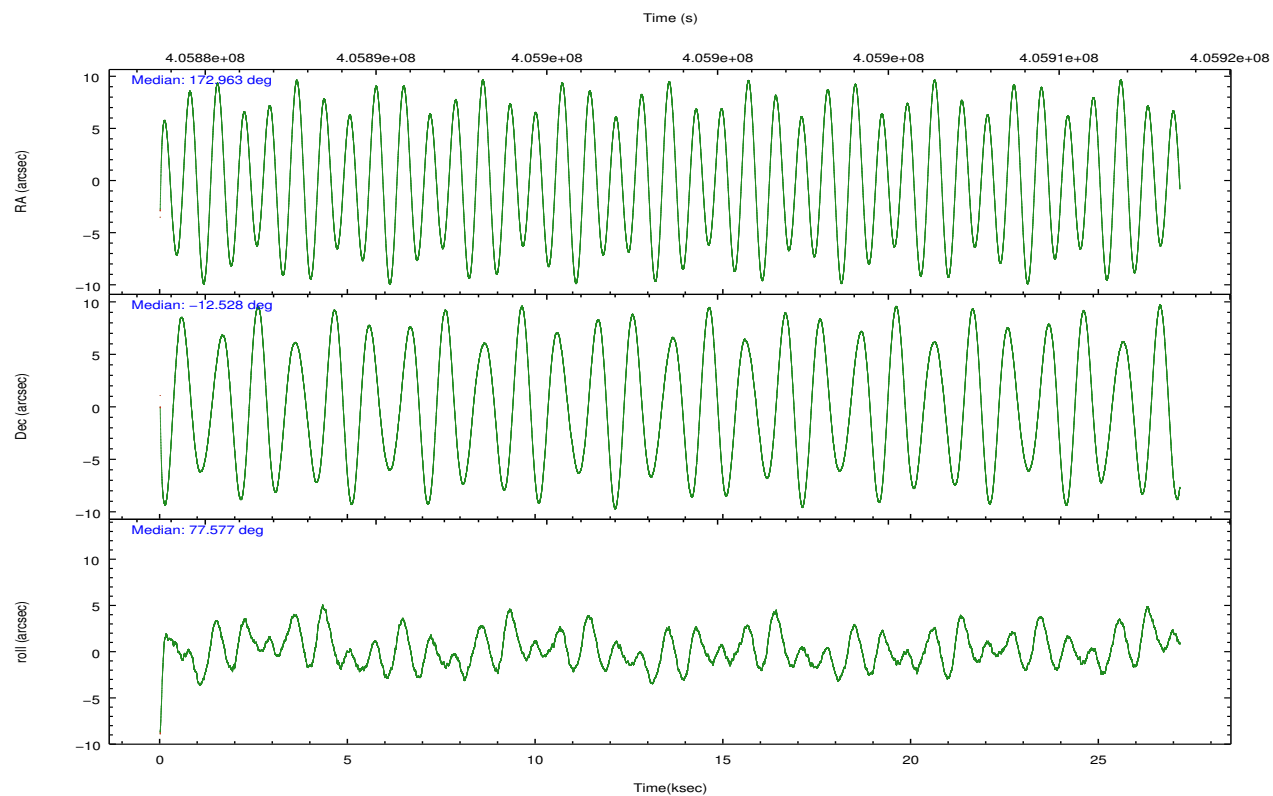
	ccd 2	ccd 3	ccd 6	ccd 7	ccd 8
grade 0 events	971	897	989	9506	2375
	3%	3%	3%	13%	5%
grade 1 events	8	13	7	491	16
	0%	0%	0%	0%	0%
grade 2 events	703	647	678	11027	2116
	2%	2%	2%	16%	4%
grade 3 events	558	620	658	5348	1021
	1%	2%	2%	7%	2%
grade 4 events	579	538	626	5303	1036
	1%	1%	1%	7%	2%
grade 5 events	901	1134	1175	5286	1653
	2%	3%	3%	7%	3%
grade 6 events	537	589	675	15167	3002
	1%	2%	2%	22%	6%
grade 7 events	26480	24633	26768	16387	32540
	86%	84%	84%	23%	74%

## 2.2 Compared Parameters

Parameter	Planned	Actual	Parameter	Planned	Actual
Instrument	ACIS	ACIS	Obspar format version number	7	7
Detector	ACIS-23678	ACIS-23678	Obspar file type	PREDICTED	ACTUAL
Grating	NONE	NONE	Obspar update status	NONE	UPDATED
Data mode	VFAINT	VFAINT	CCD I0 on	N	N
Observation mode	POINTING	POINTING	CCD I1 on	N	N
[deg] Pointing RA	172.972189	172.9633760961808	CCD I2 on	O4	Y
[deg] Pointing Dec	-12.553872	-12.52793747103476	CCD I3 on	O3	Y
[deg] Pointing Roll	77.426752	77.58146021860098	CCD S0 on	N	N
[mm] SIM focus pos	-0.684267	-0.6828225247311905	CCD S1 on	N	N
[mm] SIM defocus	0	0.001444936568705701	CCD S2 on	O1	Y
[mm] SIM translation stage pos	-190.132523	-190.1425803651734	CCD S3 on	Y	Y
[mm] SIM translation stage offset	0	0.01005778216563158	CCD S4 on	O2	Y
[s] Observation start time (MET)	405885198.184000	405884169.2236	CCD S5 on	N	N
Observation start date	2010-11-11T17:52:12	2010-11-11T17:36:09	Number of optional ACIS chips dropped	0	0
[s] Observation end time (MET)	405912198.184000	405912913.81258	On-chip summing requested	N	N
Observation end date	2010-11-12T01:22:12	2010-11-12T01:35:13	Subarray requested	CUSTOM	1/8
Read mode	TIMED	TIMED	Subarray start row	449	449
			Subarray row count	128	128
			Alternating exposures requested	N	N
			[s] Primary exposure time	0.000000	0.7

## 2.3 Aspect



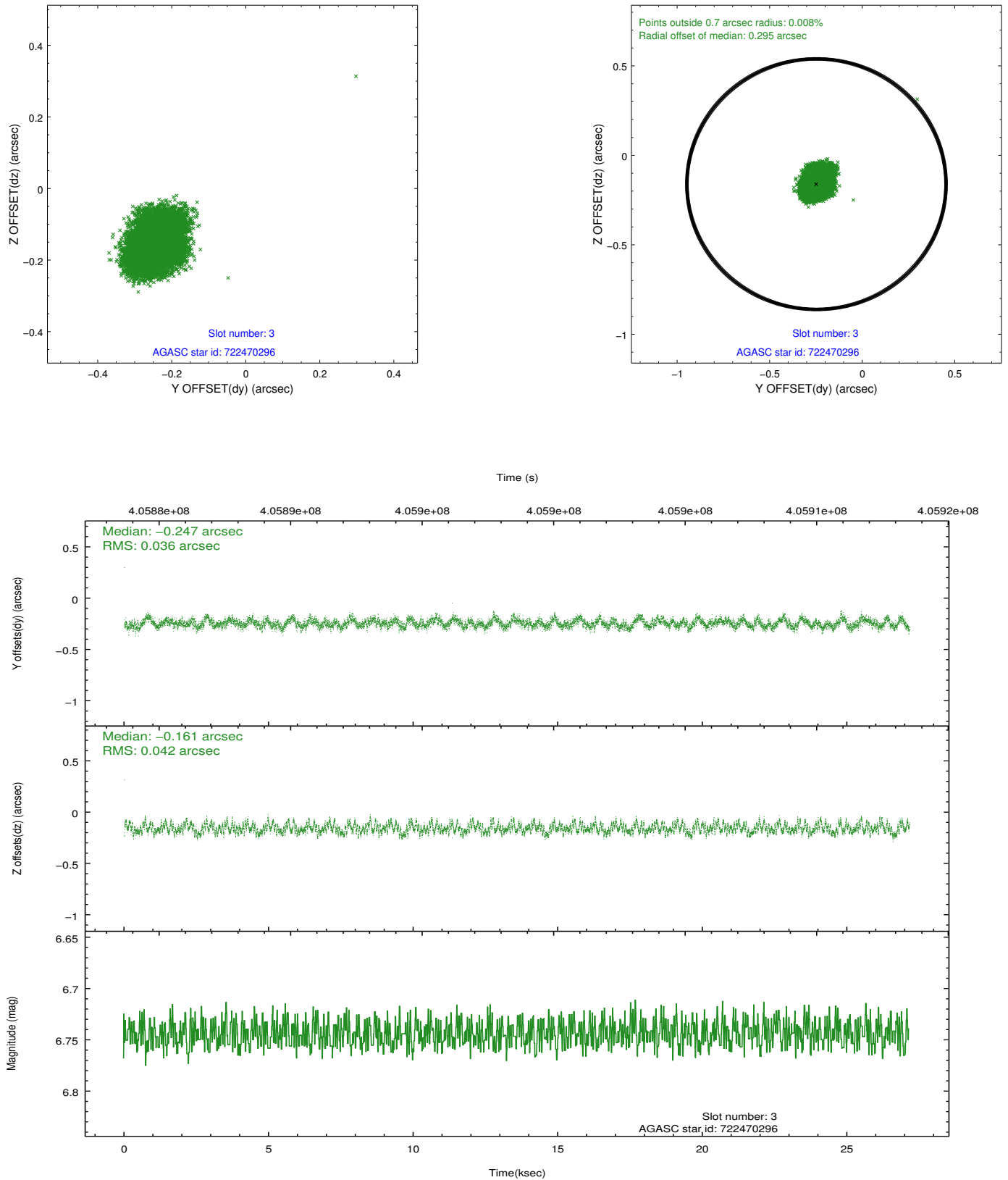


### Slot Statistics

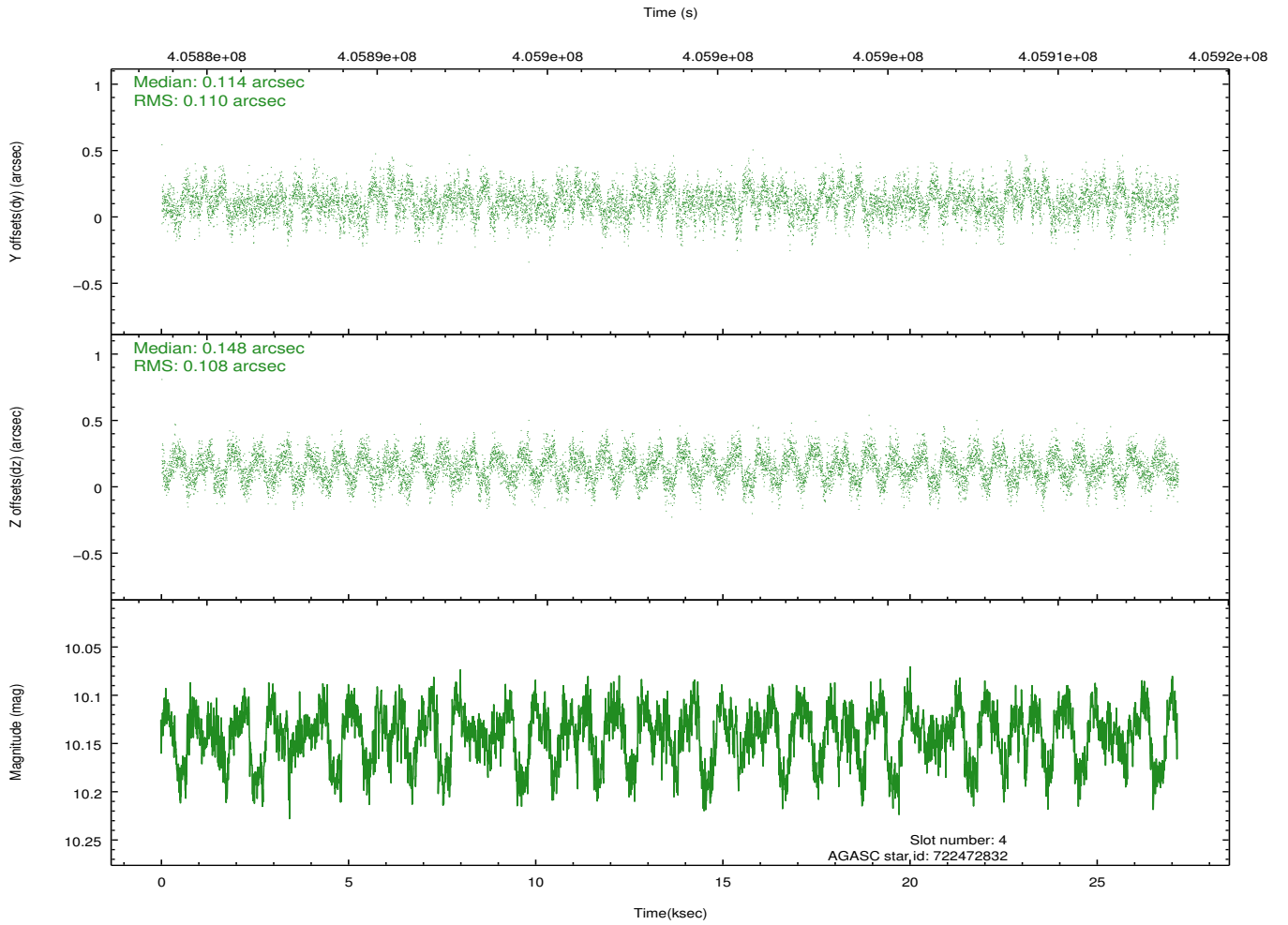
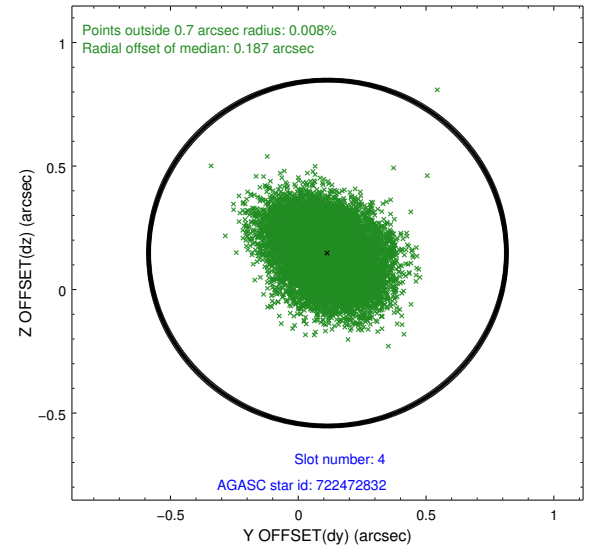
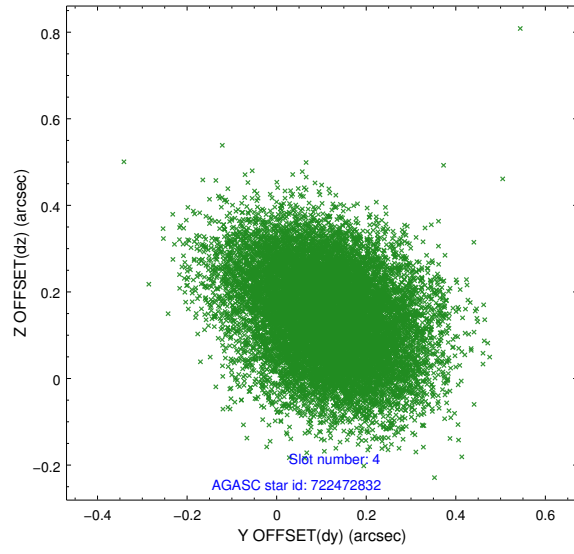
slot	status	id	mag	n_pts	med_dy	med_dz	dr1	dr2	ra	dec	mean_y	mean_z
0	FID	ACIS-S-1	6.96	6625	0.084	-0.016	0.006	0.011	0.000000	0.000000	927.60	-1735.43
1	FID	ACIS-S-5	7.00	6625	-0.128	0.069	0.006	0.011	0.000000	0.000000	-1821.53	162.15
2	FID	ACIS-S-6	7.11	6625	0.023	-0.041	0.007	0.011	0.000000	0.000000	393.03	806.07
3	GUIDE	722470296	6.74	13248	-0.247	-0.161	0.059	0.094	172.921689	-12.381367	567.48	308.86
4	GUIDE	722472832	10.14	13210	0.114	0.148	0.164	0.261	173.078970	-12.015349	1974.35	55.54
5	GUIDE	722473176	9.46	13234	-0.001	-0.117	0.144	0.220	172.599746	-12.066793	1425.20	1661.65
6	GUIDE	722871728	9.69	13228	-0.006	0.145	0.216	0.342	173.202235	-12.568355	125.08	-799.72
7	GUIDE	722873464	7.30	13248	0.172	-0.013	0.092	0.165	172.661543	-13.050266	-1982.07	673.73

## 2.4 Star Slots

### 2.4.1 Slot 3

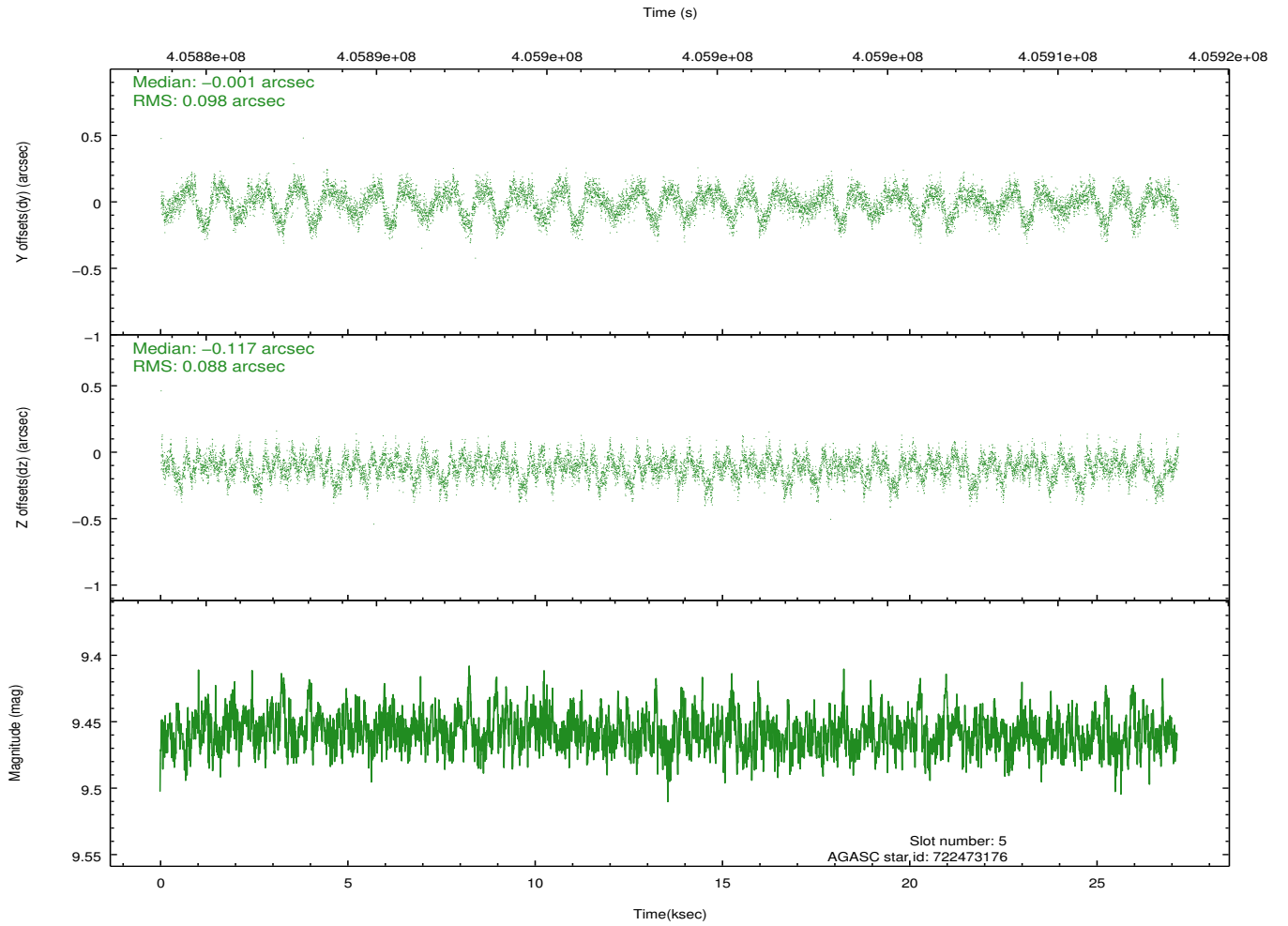
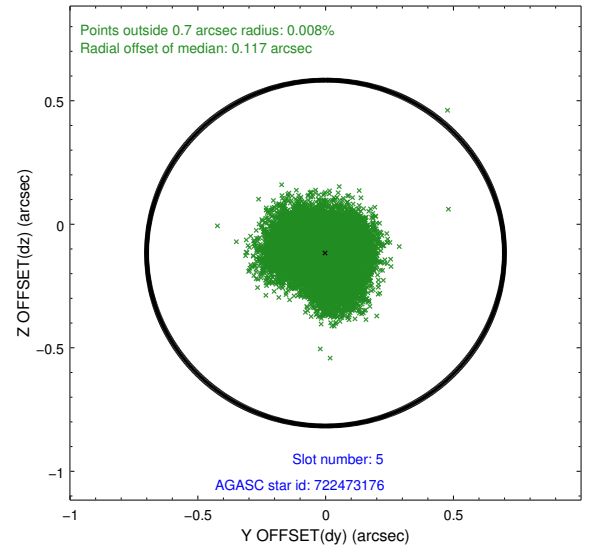
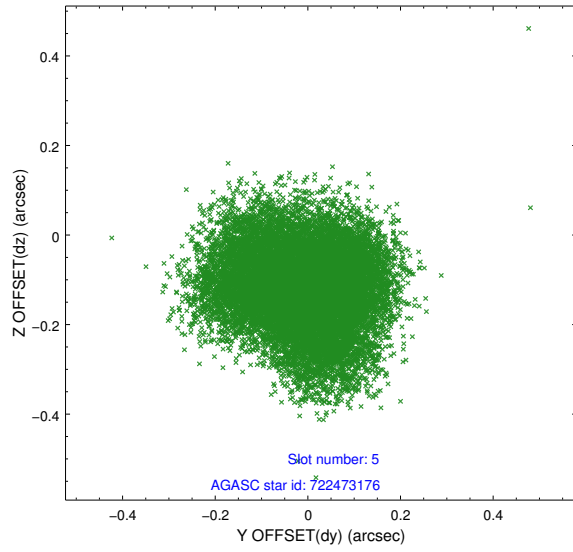


## 2.4.2 Slot 4

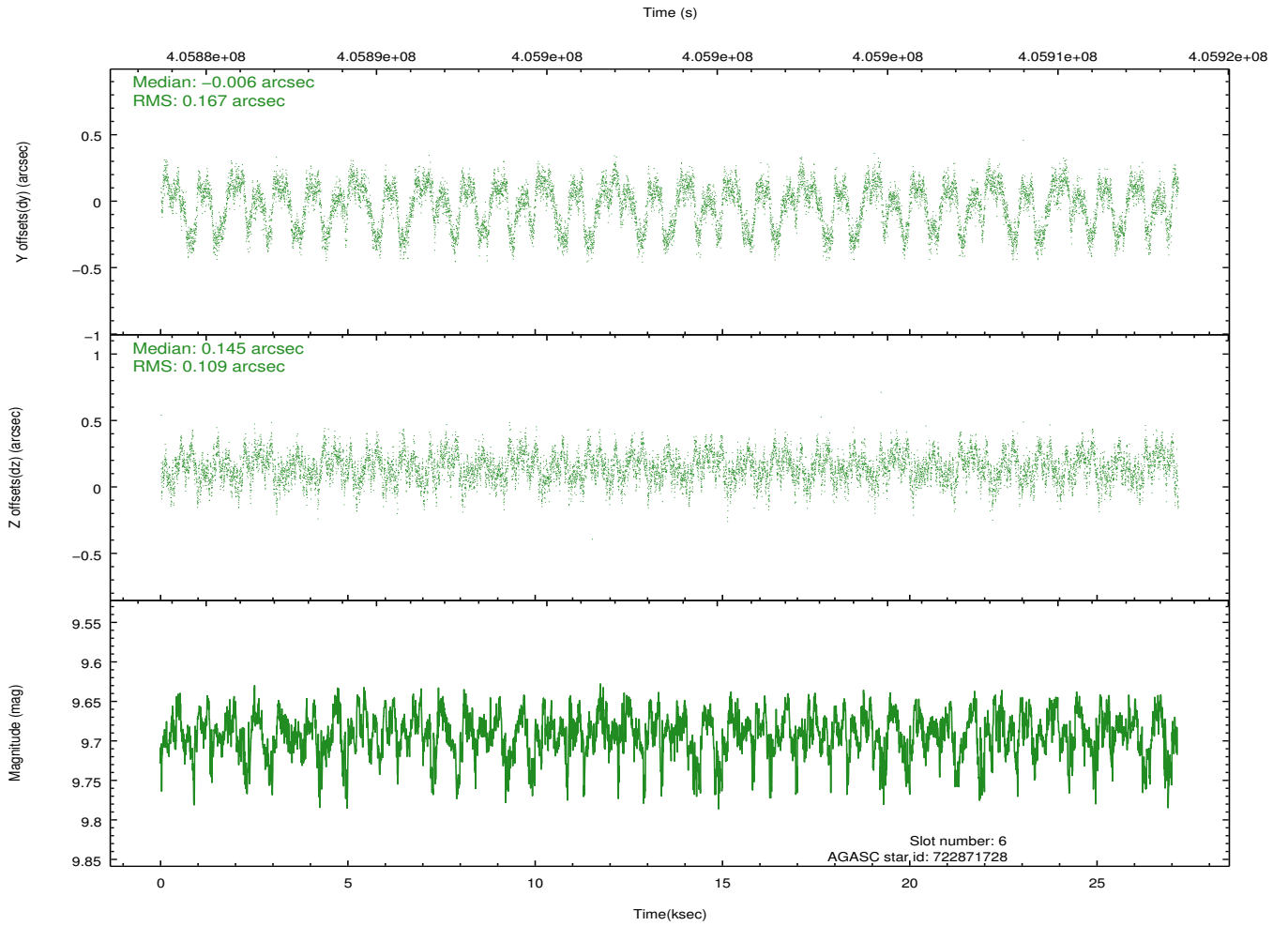
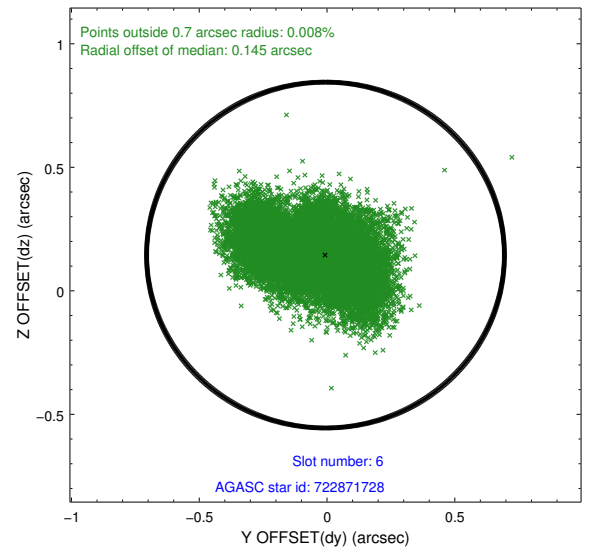
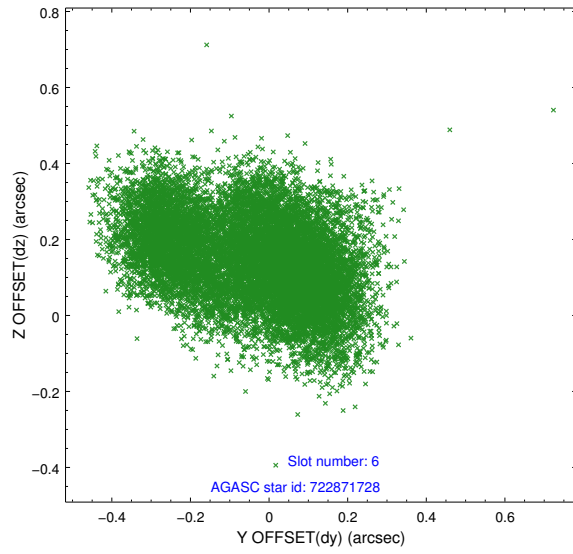




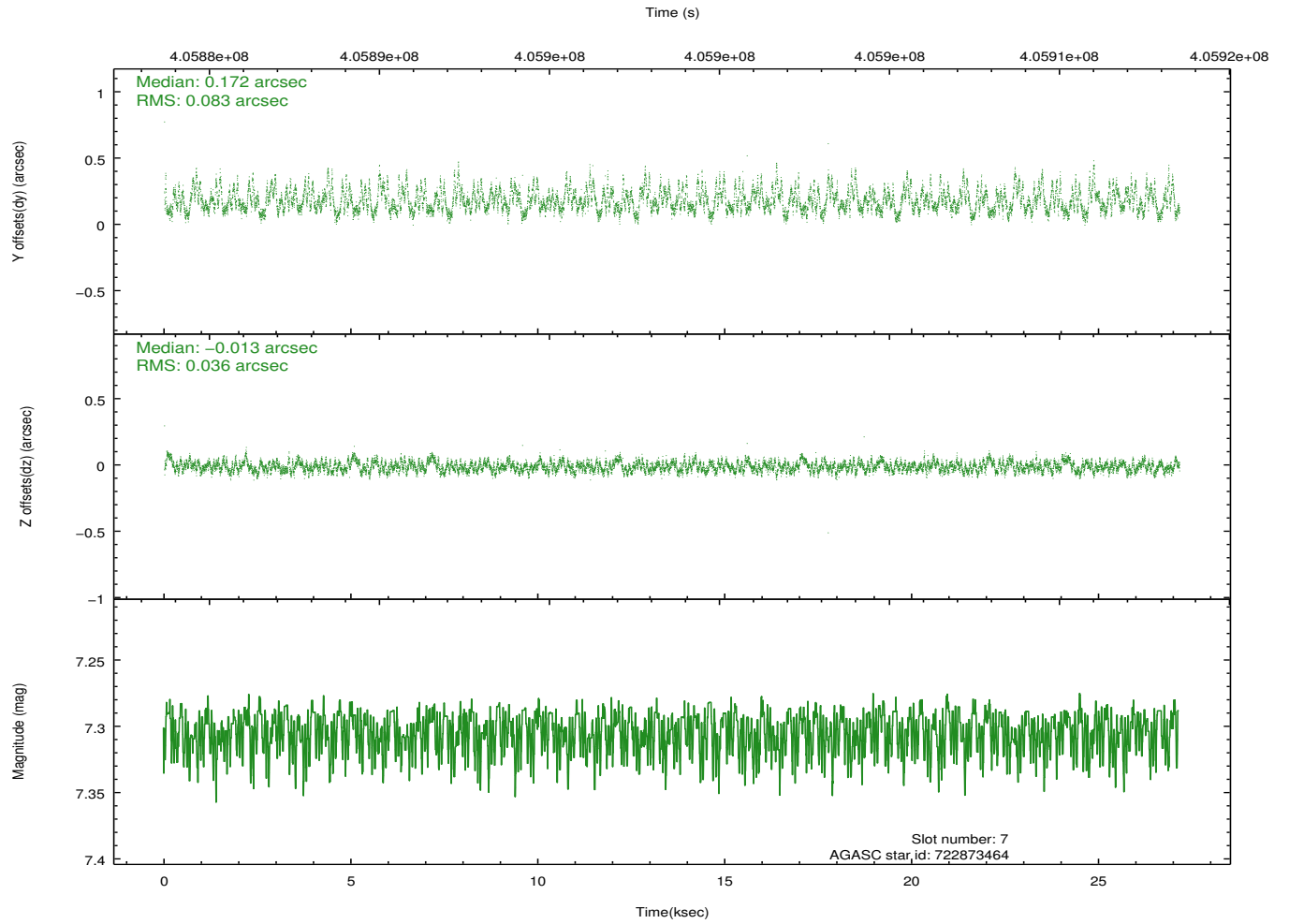
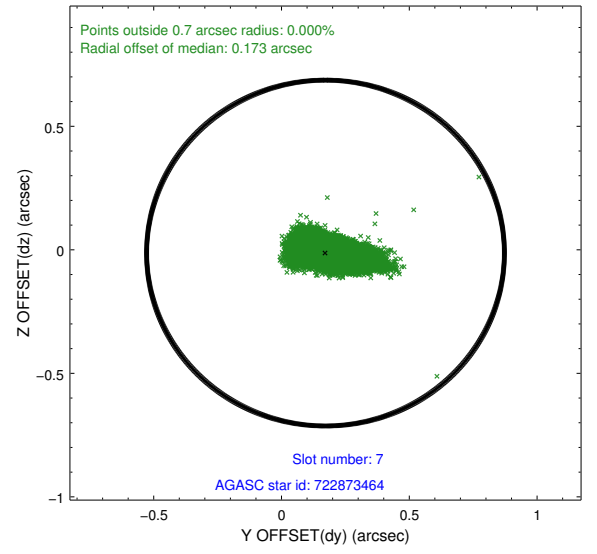
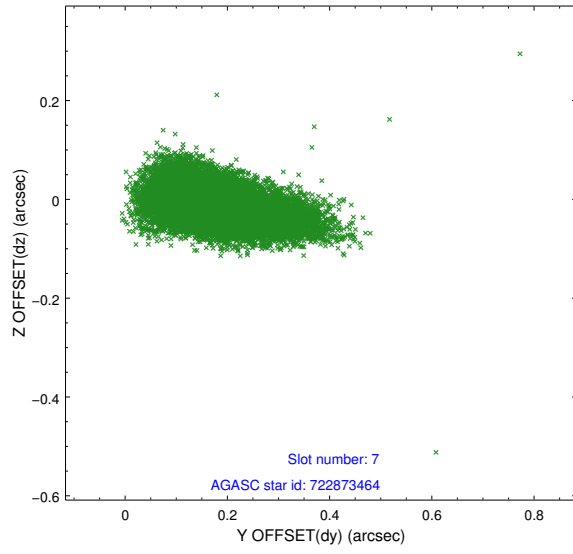
### 2.4.3 Slot 5



## 2.4.4 Slot 6

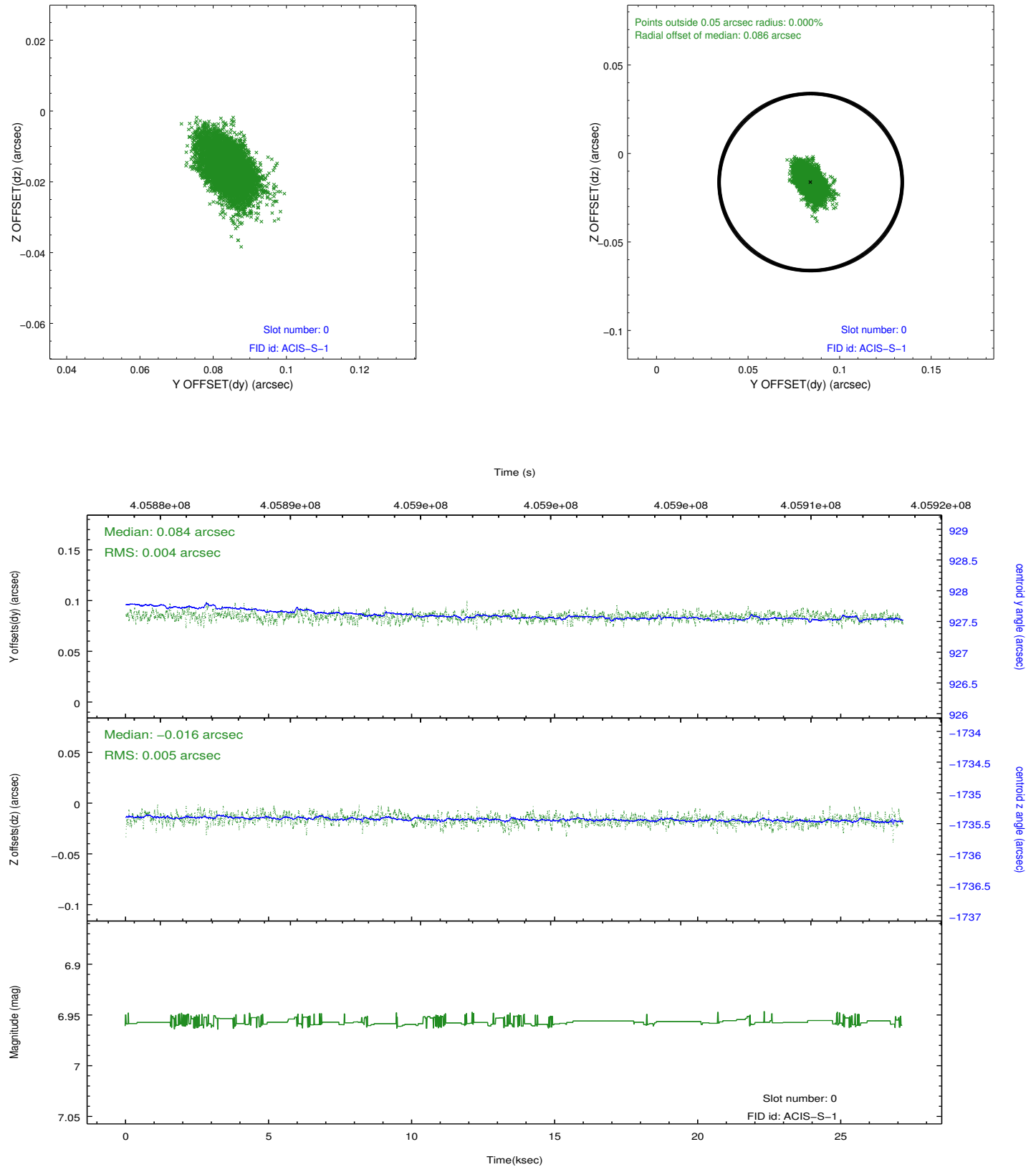


## 2.4.5 Slot 7

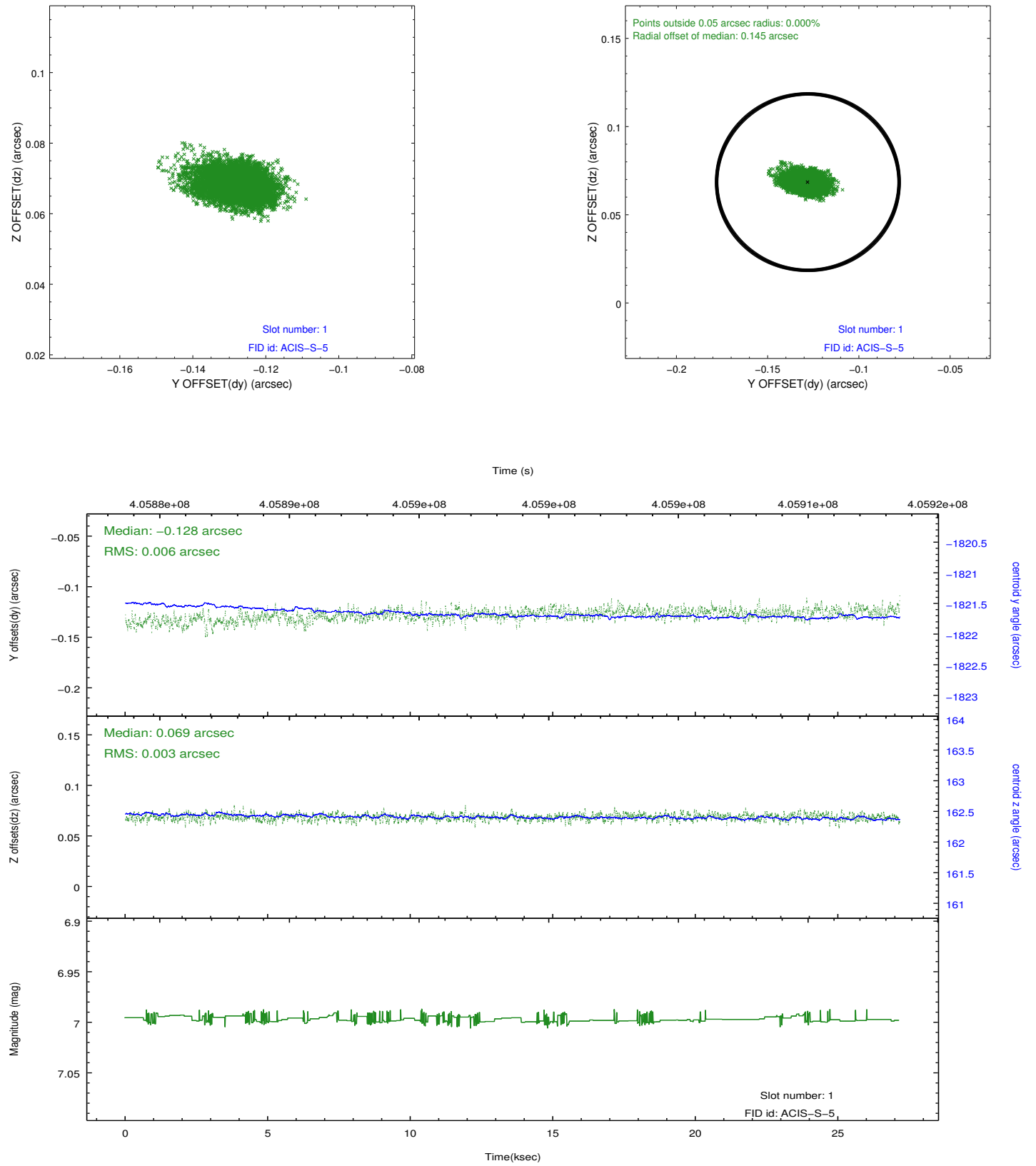


## 2.5 FID Slots

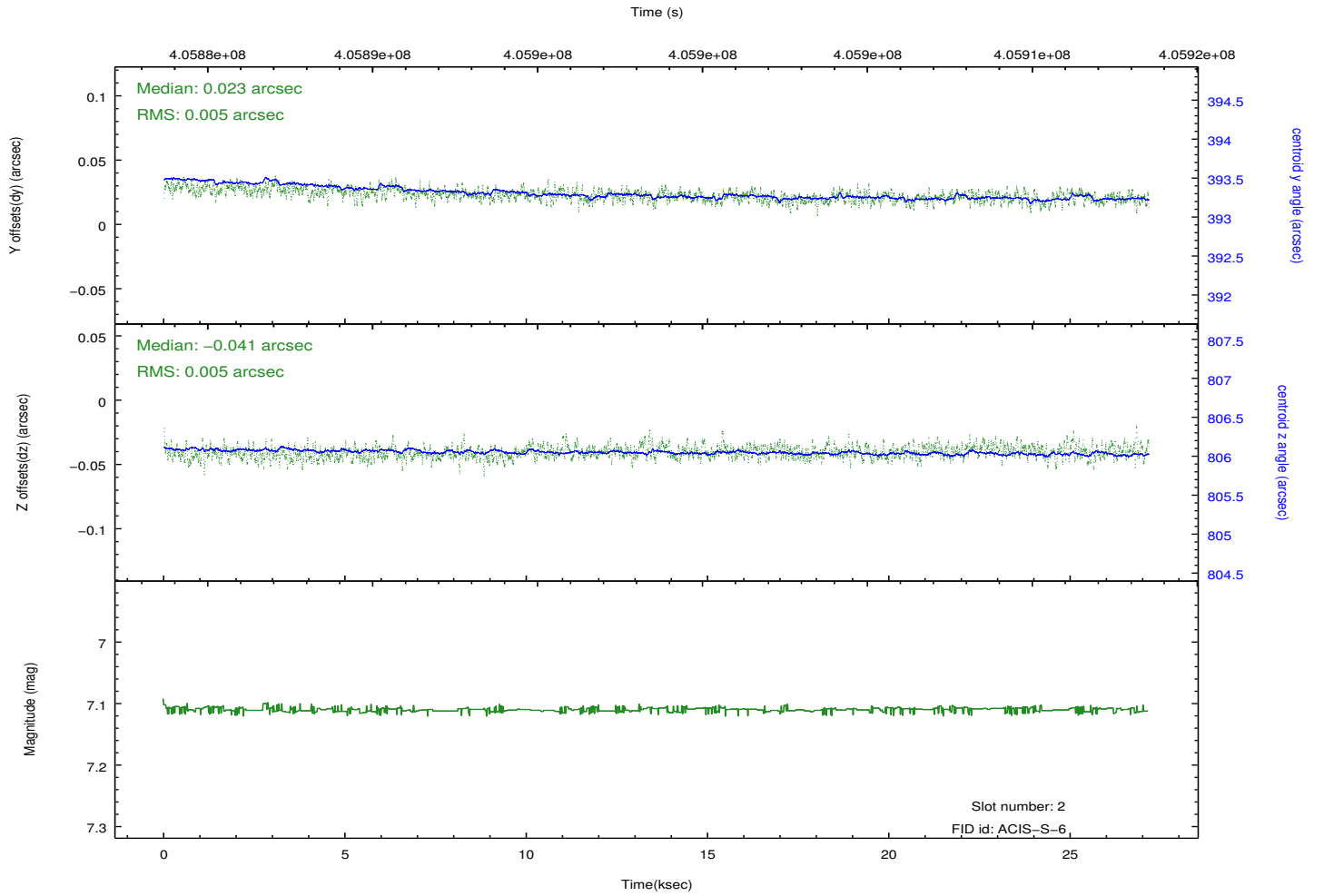
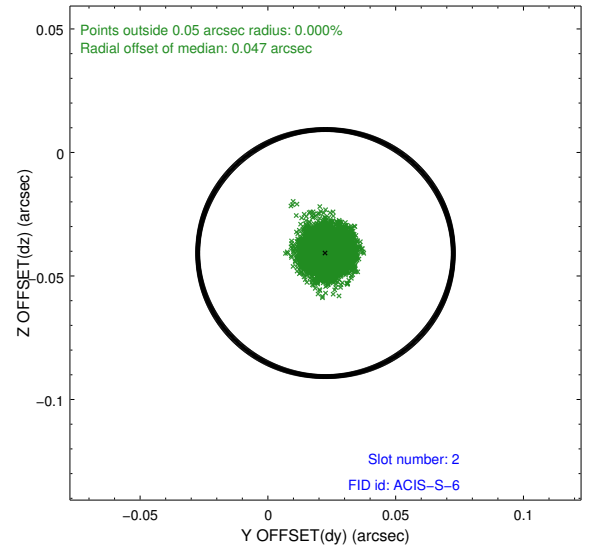
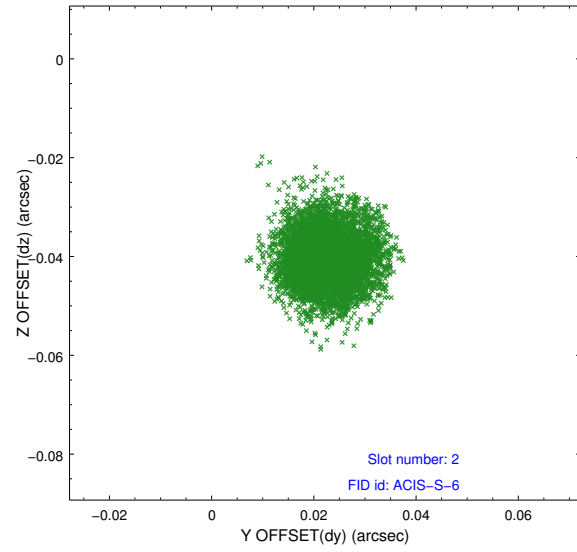
### 2.5.1 Slot 0



## 2.5.2 Slot 1



### 2.5.3 Slot 2



## A Summary

### A.1 Status

V&V Scientist	Beth Sundheim
V&V Date (YYYY-MM-DD)	2012.07.16
V&V Edition	1
V&V Disposition and Status	OK
V&V Charge Time	27.064099539042

### A.2 Comments