

V&V Reference Report

L2 ASCDS Version : 8.4.5

Observation 11503 - L2 Version 2
Chandra X-Ray Center

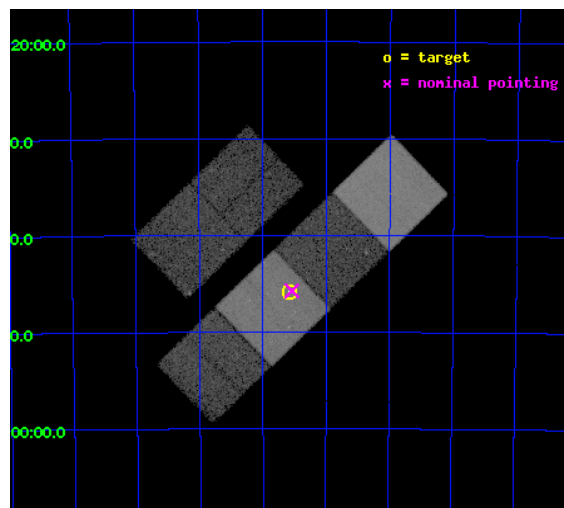
L2 Processing Date : Jun 20 2012

Contents

1	Front	2
2	OBI	3
2.1	OBI	3
2.1.1	Images	3
2.1.2	Bias	3
2.1.3	Parameters	4
2.1.4	Events	4
2.2	Compared Parameters	5
2.3	Aspect	6
2.4	Star Slots	9
2.4.1	Slot 3	9
2.4.2	Slot 4	10
2.4.3	Slot 5	11
2.4.4	Slot 6	12
2.4.5	Slot 7	13
2.5	FID Slots	14
2.5.1	Slot 0	14
2.5.2	Slot 1	15
2.5.3	Slot 2	16
A	Summary	17
A.1	Status	17
A.2	Comments	17

1 Front

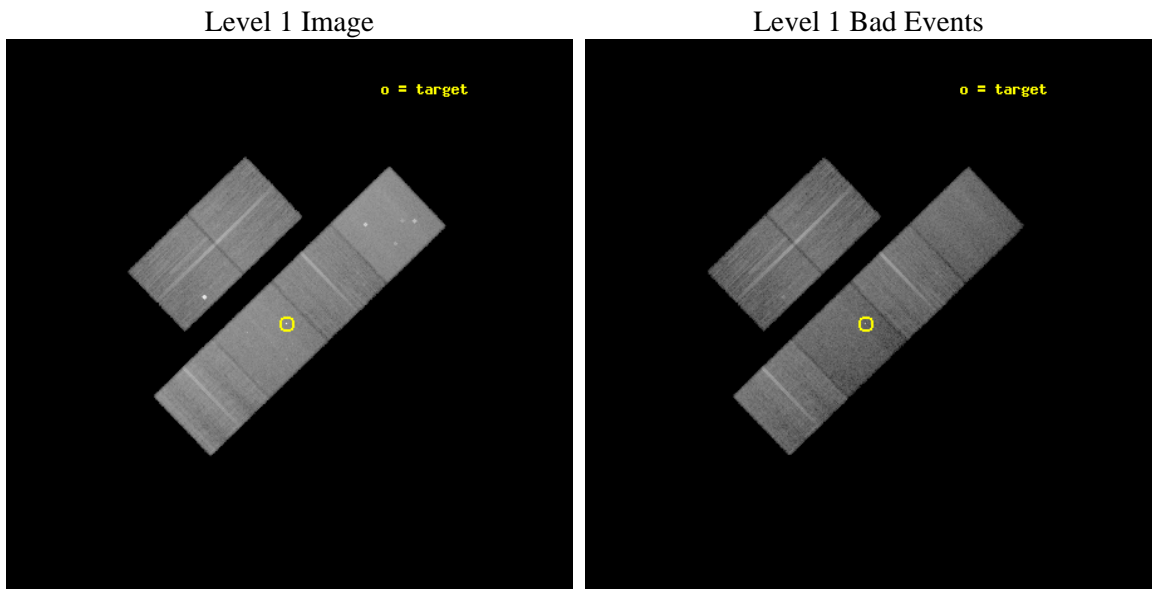
seq_num	702089	Sequence number
obs_id	11503	Observation id
title	The nature of active nuclei in radio galaxies: observations of the 2Jy sample	Proposal title
observer	Dr Martin Hardcastle	Principal investigator
object	PKS 1814-63	Source name
dtcycle	0	
cycle	P	events from which exps? Prim/Second/Both
ra_targ	274.895833	Observer's specified target RA [deg]
dec_targ	-63.763361	Observer's specified target Dec [deg]
ra_nom	274.88516405987	Nominal RA [deg]
dec_nom	-63.762330926897	Nominal Dec [deg]
roll_nom	136.0128877307	Nominal Roll [deg]
revision	2	Processing version of data
ontime	20131.199925065	Sum of GTIs [s]
livetime	19876.286550061	Livetime [s]
ontime2	20127.958894849	Sum of GTIs [s]
ontime3	20124.717864871	Sum of GTIs [s]
ontime5	20131.199925065	Sum of GTIs [s]
ontime6	20131.199925065	Sum of GTIs [s]
ontime7	20131.199925065	Sum of GTIs [s]
ontime8	20127.958884776	Sum of GTIs [s]
l2events	271294	Number of level 2 events



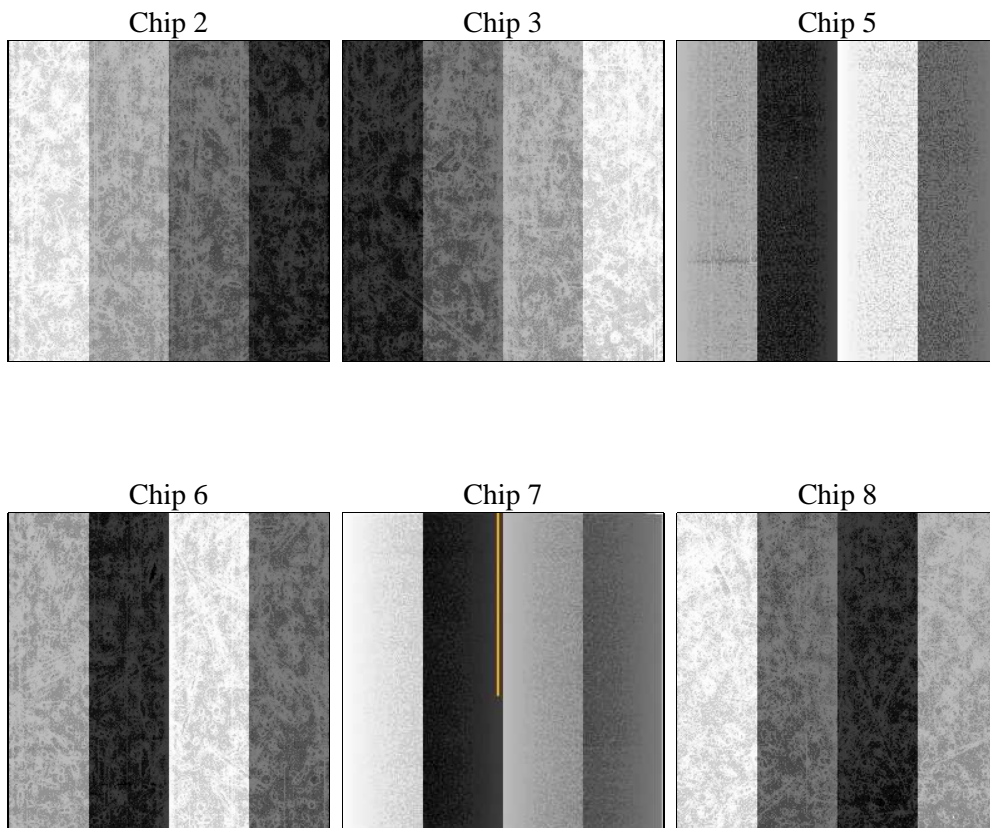
2 OBI

2.1 OBI

2.1.1 Images



2.1.2 Bias



2.1.3 Parameters

obi_num	0	Obi number	sched_exp_time	20000.000000	[s] Scheduled observation exposure time
ascdsver	8.4.5	Processing system revision	ontime	20131.199925065	Sum of GTIs [s]
caldsver	4.4.10	 	ontime2	20127.958894849	Sum of GTIs [s]
date	2012-06-20T12:28:03	Date and time of file creation	ontime3	20124.717864871	Sum of GTIs [s]
revision	2	Processing version of data	ontime5	20131.199925065	Sum of GTIs [s]
			ontime6	20131.199925065	Sum of GTIs [s]
			ontime7	20131.199925065	Sum of GTIs [s]
			ontime8	20127.958884776	Sum of GTIs [s]
			l1events	1210634	Number of level 1 events

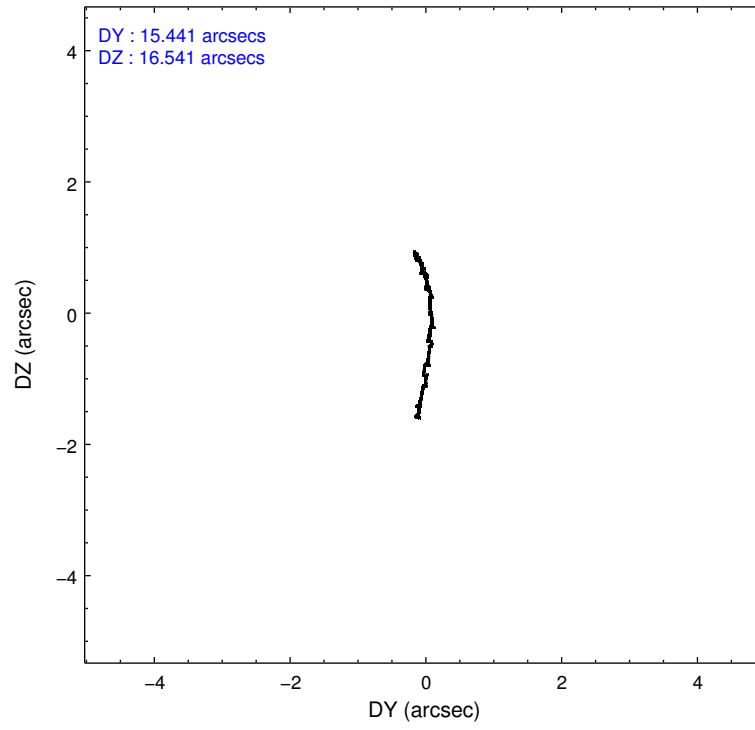
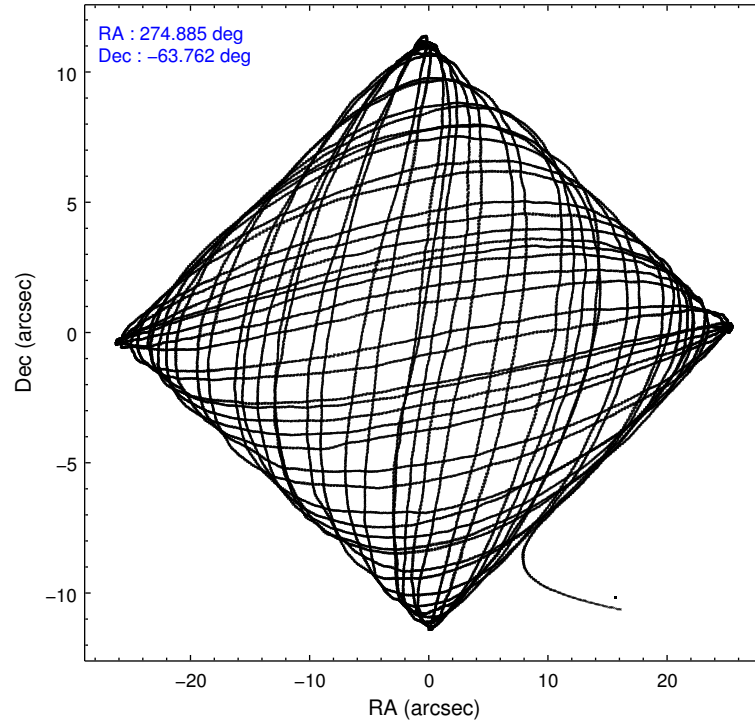
2.1.4 Events

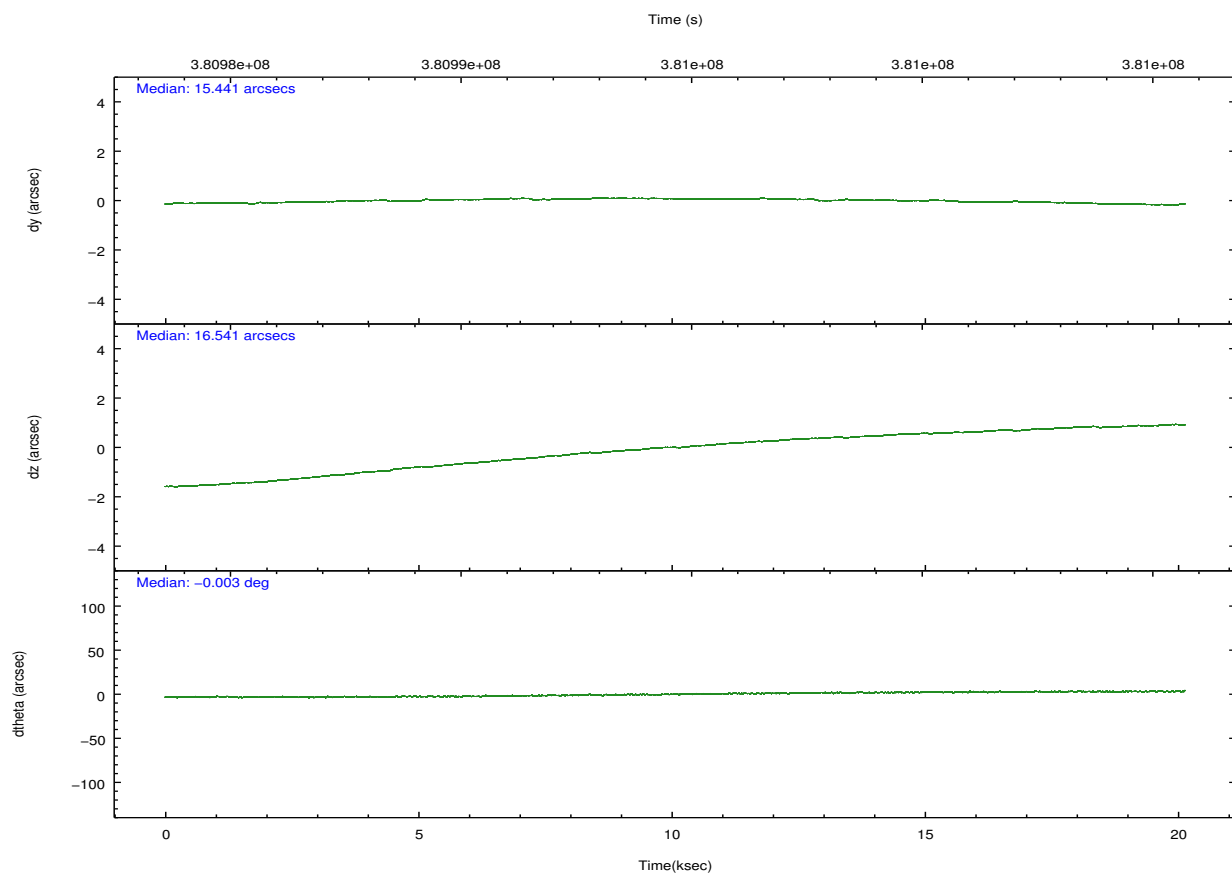
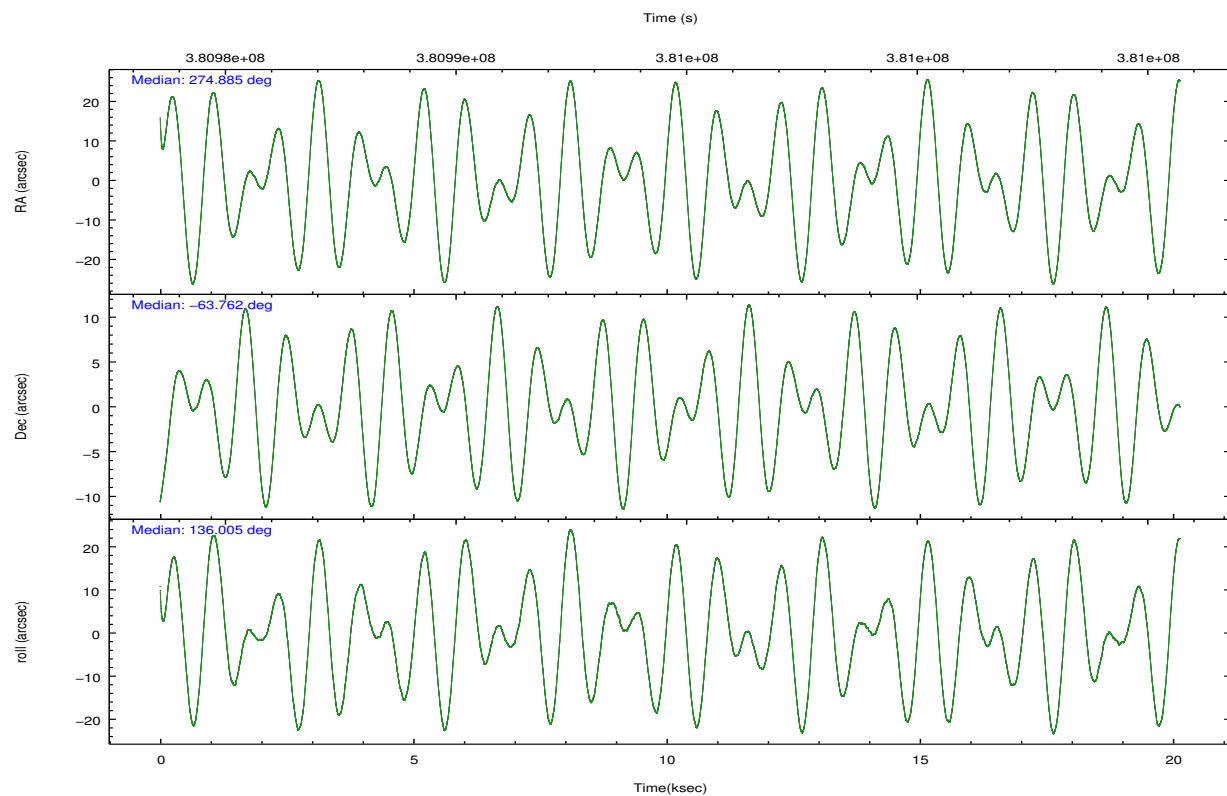
	ccd 2	ccd 3	ccd 5	ccd 6	ccd 7	ccd 8		ccd 2	ccd 3	ccd 5	ccd 6	ccd 7	ccd 8
level 1 events	177811	177622	252536	176364	205690	220611	grade 0 events	6654	18247	14041	7162	9820	16831
rejected events	160039	148921	127907	157347	110938	164306		3%	10%	5%	4%	4%	7%
rejected %	90%	83%	50%	89%	53%	74%	grade 1 events	117	183	506	99	303	198
								0%	0%	0%	0%	0%	0%
							grade 2 events	4353	3775	38463	4126	20210	13180
								2%	2%	15%	2%	9%	5%
							grade 3 events	1847	1889	4988	2004	8684	6243
								1%	1%	1%	1%	4%	2%
							grade 4 events	1950	1909	4848	1943	8753	5675
								1%	1%	1%	1%	4%	2%
							grade 5 events	6334	7126	19437	7219	21195	10671
								3%	4%	7%	4%	10%	4%
							grade 6 events	3274	3398	64640	4119	49098	15271
								1%	1%	25%	2%	23%	6%
							grade 7 events	153282	141095	105613	149692	87627	152542
								86%	79%	41%	84%	42%	69%

2.2 Compared Parameters

Parameter	Planned	Actual	Parameter	Planned	Actual
Instrument	ACIS	ACIS	Obspar format version number	7	7
Detector	ACIS-235678	ACIS-235678	Obspar file type	PREDICTED	ACTUAL
Grating	NONE	NONE	Obspar update status	NONE	UPDATED
Data mode	VFAINT	VFAINT	CCD I0 on	N	N
Observation mode	POINTING	POINTING	CCD I1 on	N	N
[deg] Pointing RA	274.945343	274.8851640598657	CCD I2 on	O1	Y
[deg] Pointing Dec	-63.768561	-63.76233092689652	CCD I3 on	O2	Y
[deg] Pointing Roll	135.910247	136.0128877306965	CCD S0 on	N	N
[mm] SIM focus pos	-0.684267	-0.6828225247311905	CCD S1 on	O3	Y
[mm] SIM defocus	0	0.001444936568705701	CCD S2 on	Y	Y
[mm] SIM translation stage pos	-190.132523	-190.145094680475	CCD S3 on	Y	Y
[mm] SIM translation stage offset	0	0.01257209746719923	CCD S4 on	Y	Y
[s] Observation start time (MET)	380984700.184000	380983467.80268	CCD S5 on	N	N
Observation start date	2010-01-27T13:03:54	2010-01-27T12:44:27	Number of optional ACIS chips dropped	0	0
[s] Observation end time (MET)	381004700.184000	381006106.97883	On-chip summing requested	N	N
Observation end date	2010-01-27T18:37:14	2010-01-27T19:01:46	Subarray requested	NONE	NONE
Read mode	TIMED	TIMED	Alternating exposures requested	N	N
			[s] Primary exposure time	0.000000	3.2

2.3 Aspect



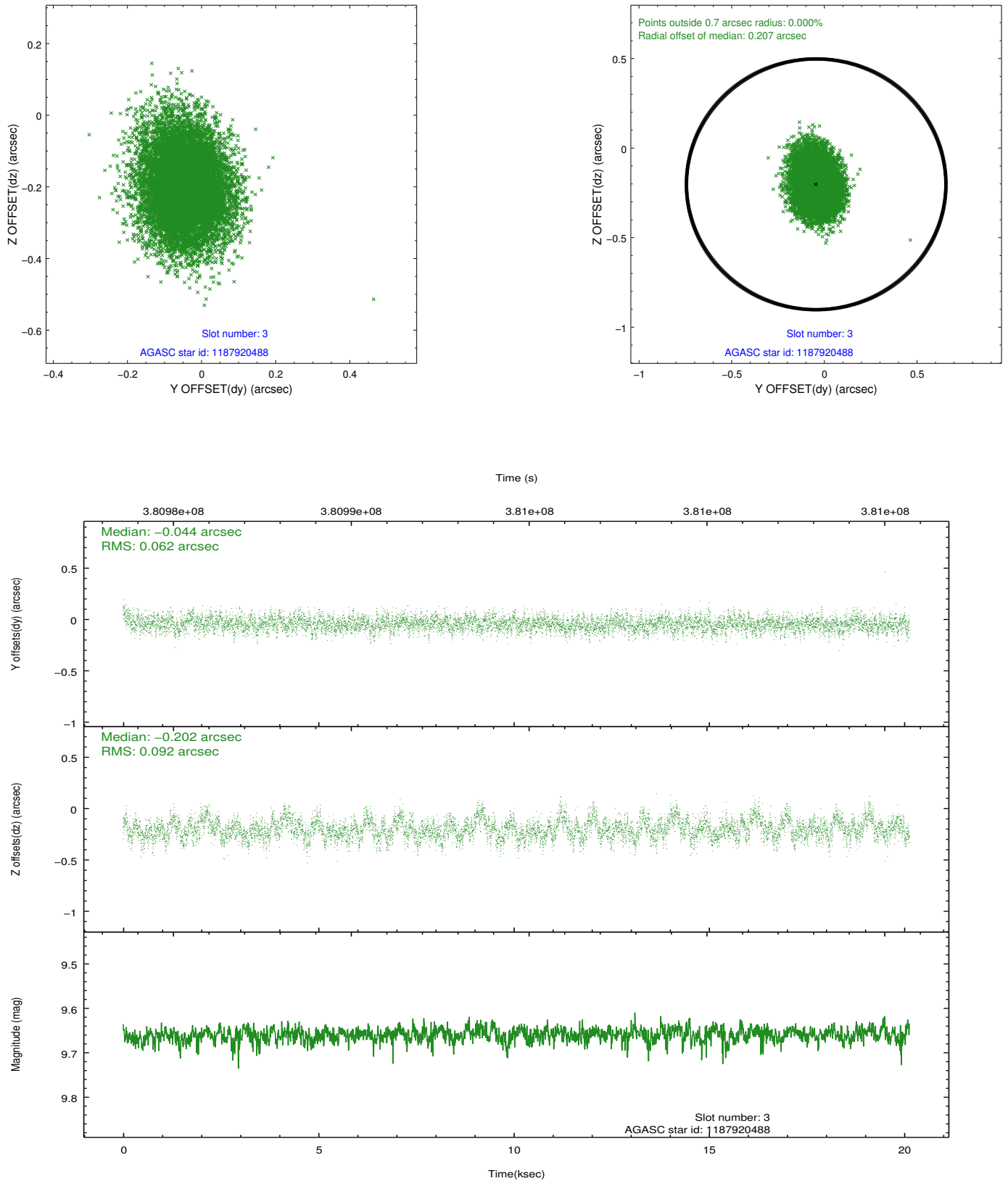


Slot Statistics

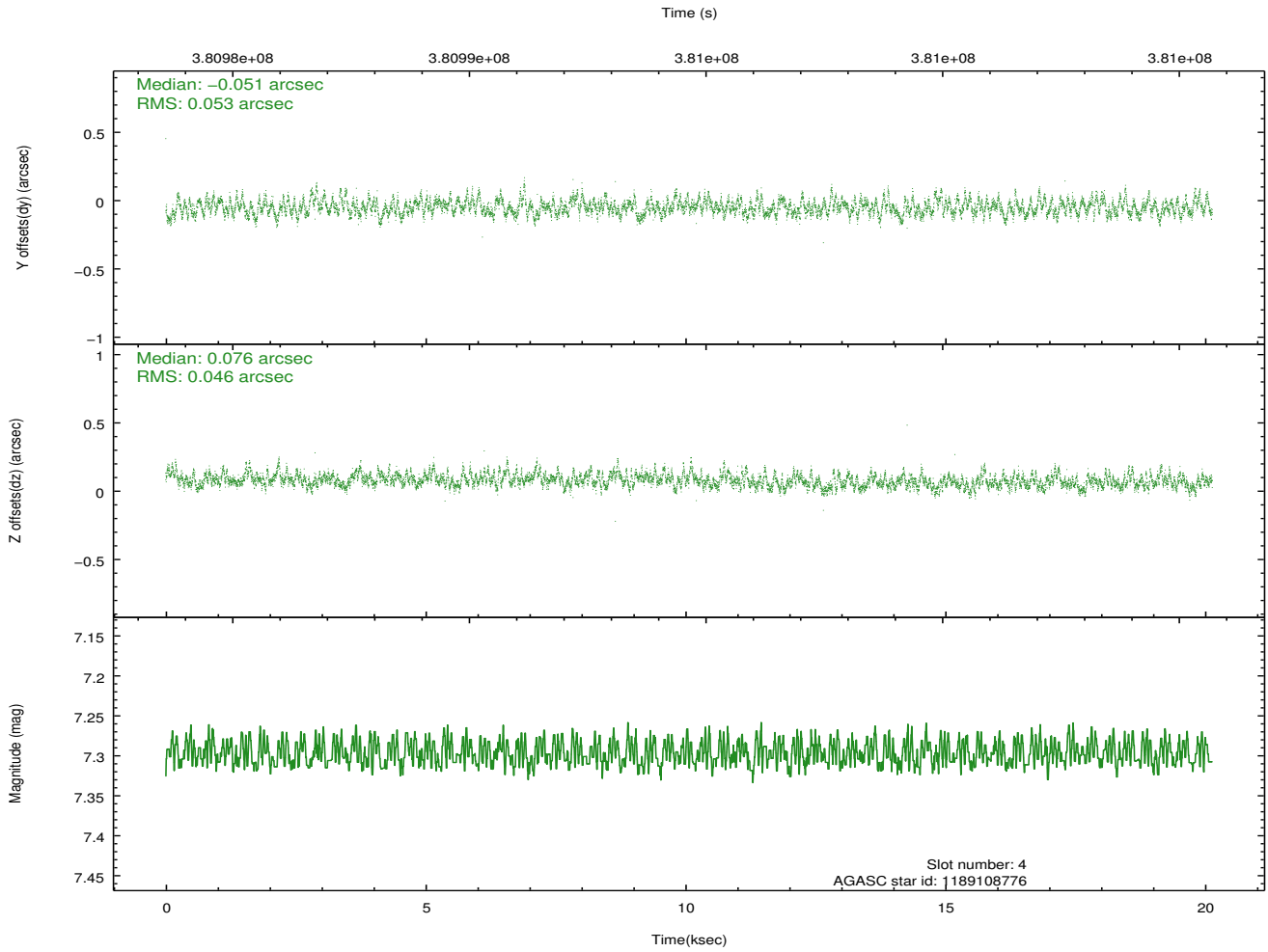
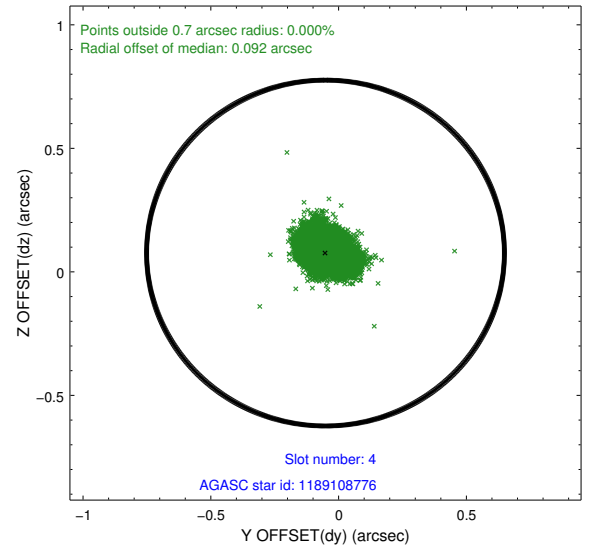
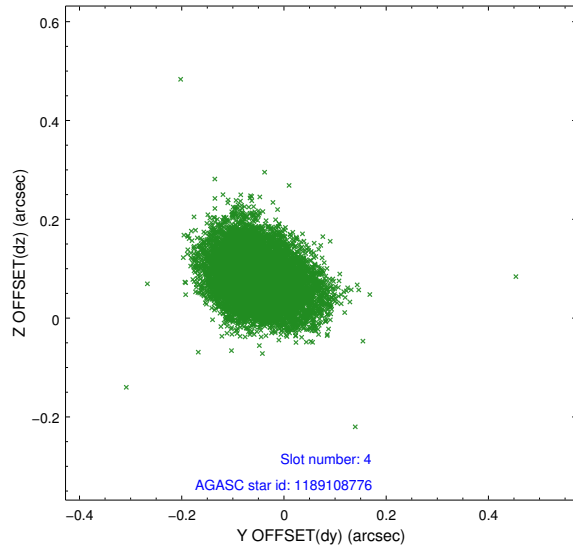
slot	status	id	mag	n_pts	med_dy	med_dz	dr1	dr2	ra	dec	mean_y	mean_z
0	FID	ACIS-S-2	6.96	4912	-0.090	-0.033	0.022	0.032	0.000000	0.000000	-768.51	-1737.75
1	FID	ACIS-S-4	7.05	4911	0.189	0.054	0.009	0.017	0.000000	0.000000	2144.97	170.61
2	FID	ACIS-S-5	7.08	4911	-0.125	-0.012	0.024	0.039	0.000000	0.000000	-1821.14	164.47
3	GUIDE	1187920488	9.66	9808	-0.044	-0.202	0.116	0.194	274.283869	-64.298290	-588.91	2092.00
4	GUIDE	1189108776	7.30	9822	-0.051	0.076	0.074	0.122	275.524733	-63.381588	295.54	-1647.31
5	GUIDE	1189610280	8.72	9817	0.052	0.069	0.086	0.139	274.795495	-64.119422	-709.70	1071.21
6	GUIDE	1187408904	8.78	9811	-0.047	0.160	0.125	0.187	274.011759	-63.287263	2283.00	-184.32
7	GUIDE	1187924712	9.79	9803	0.098	-0.103	0.203	0.293	273.044022	-63.845513	1942.93	2330.96

2.4 Star Slots

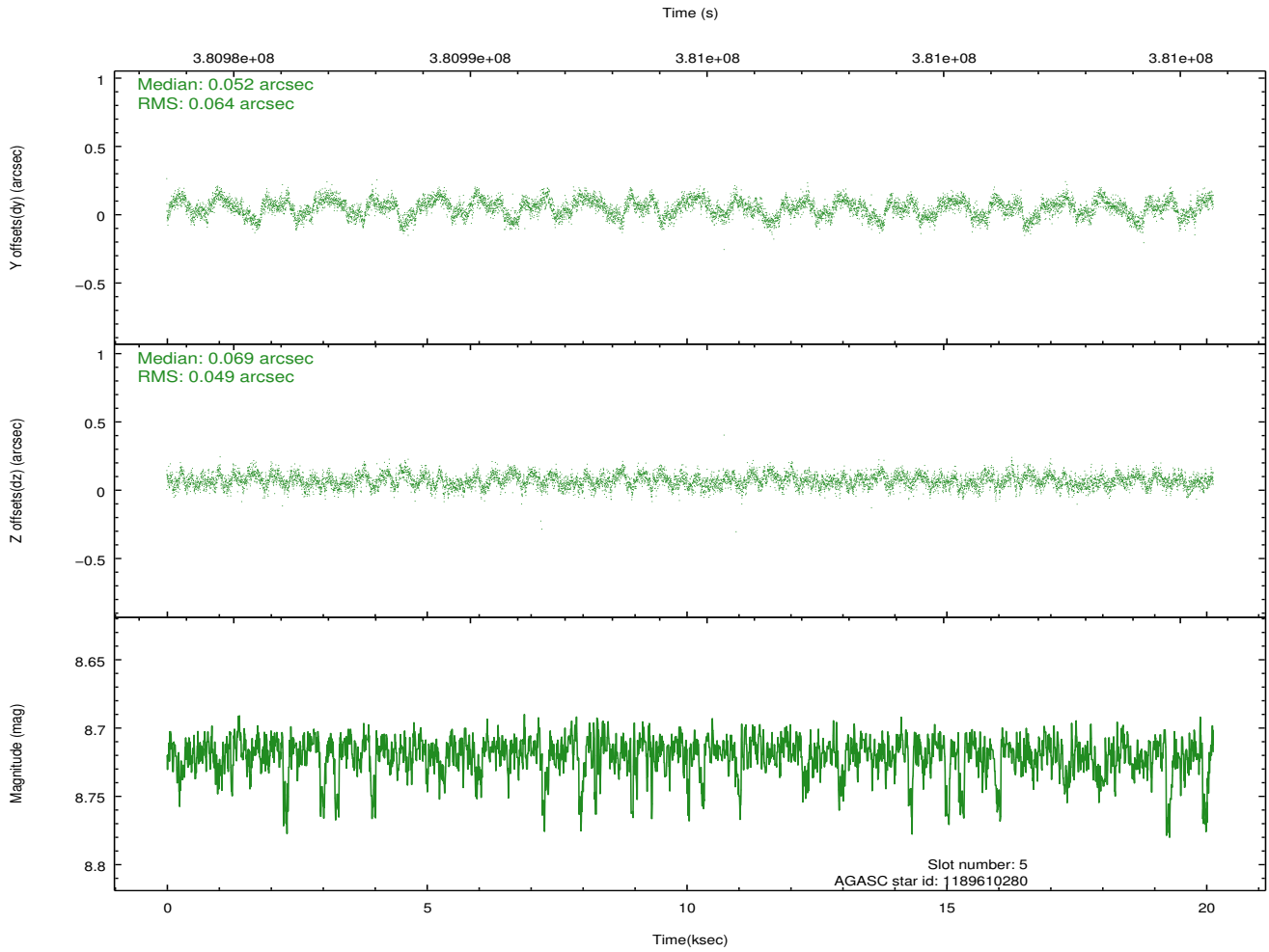
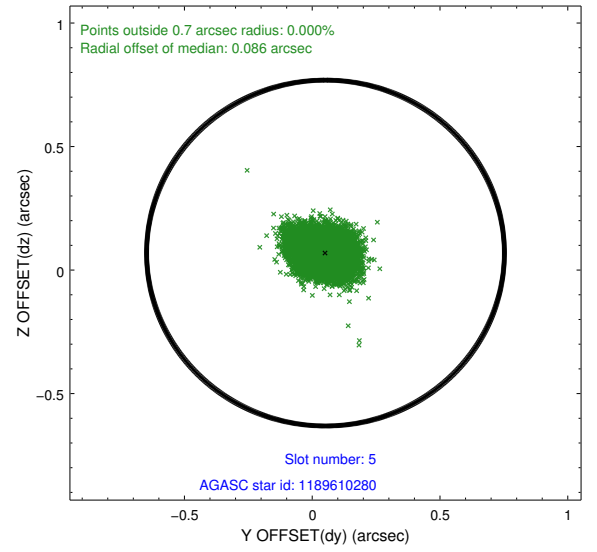
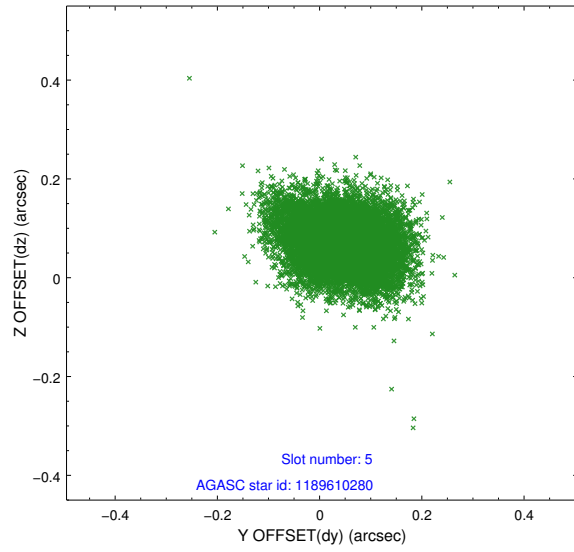
2.4.1 Slot 3



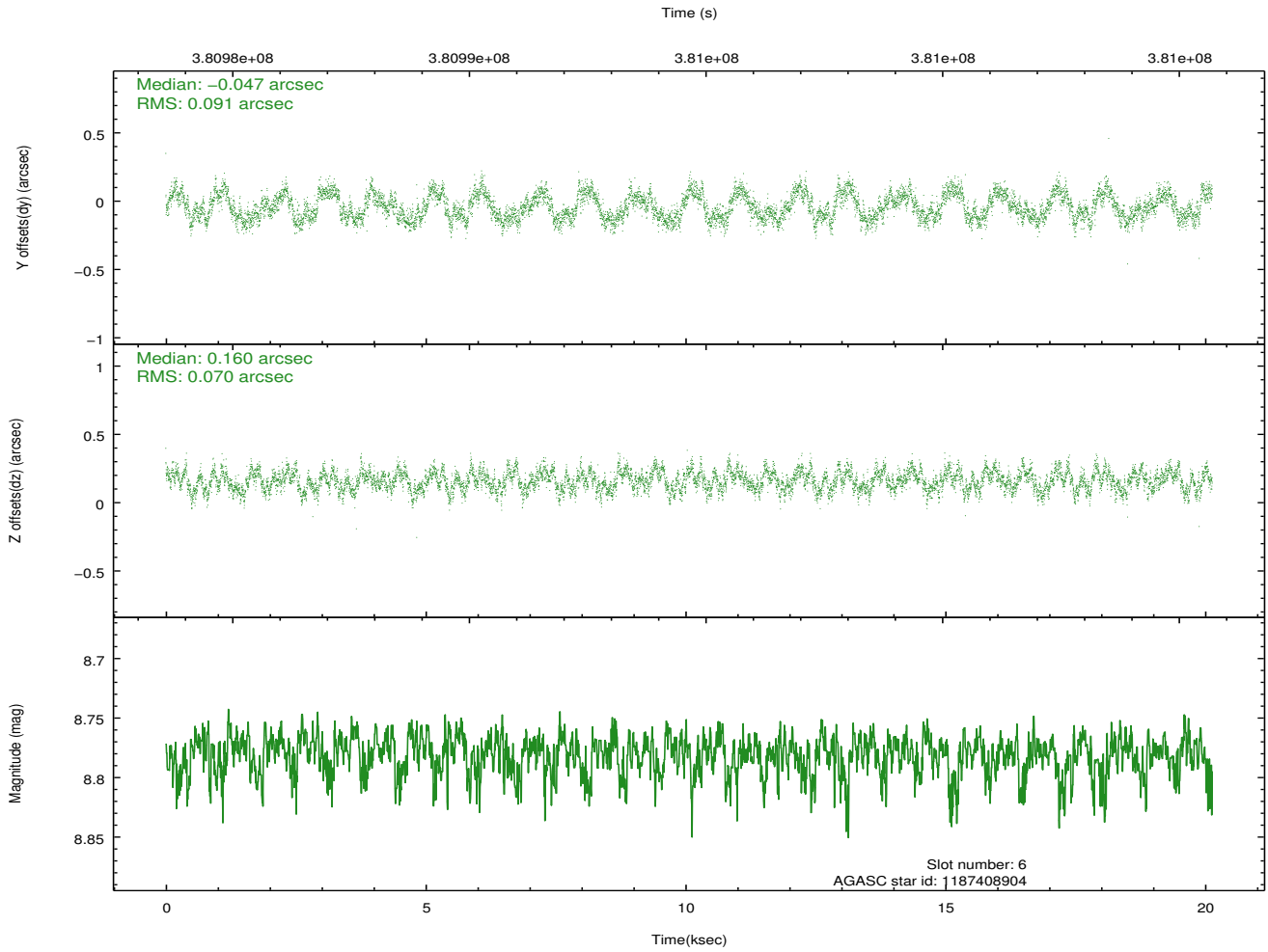
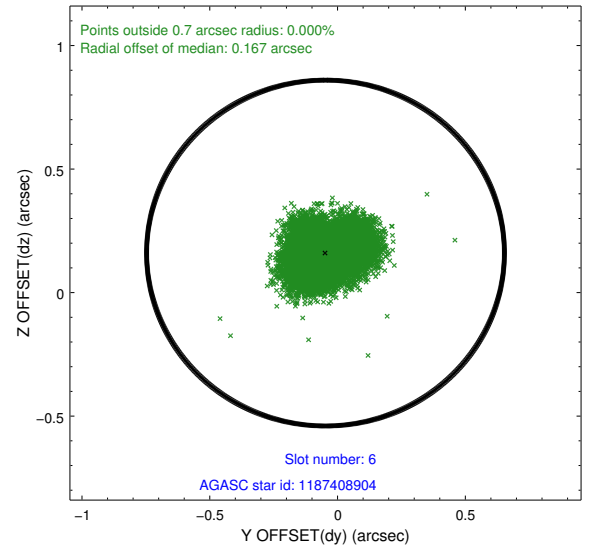
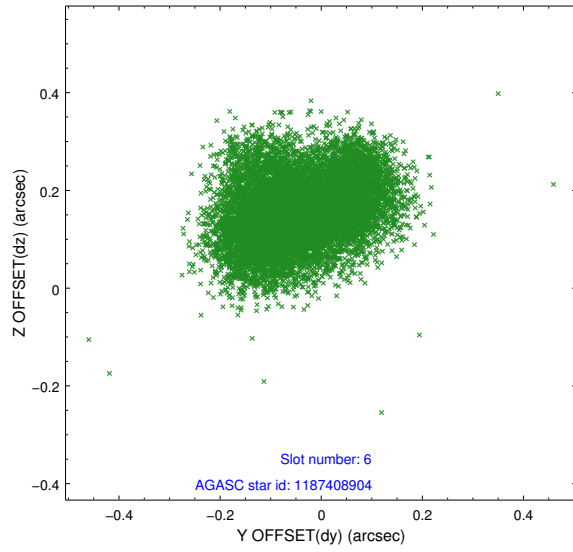
2.4.2 Slot 4



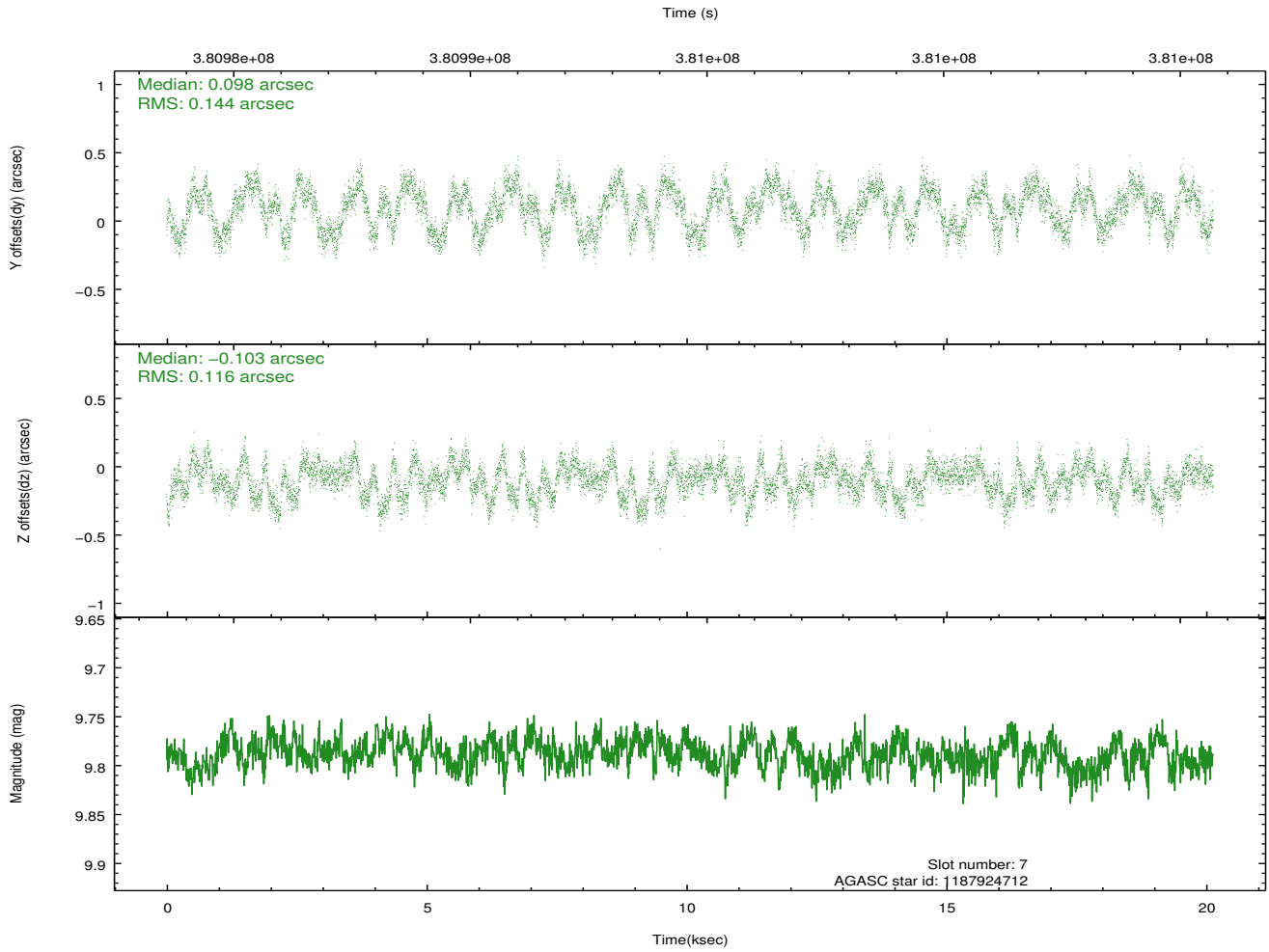
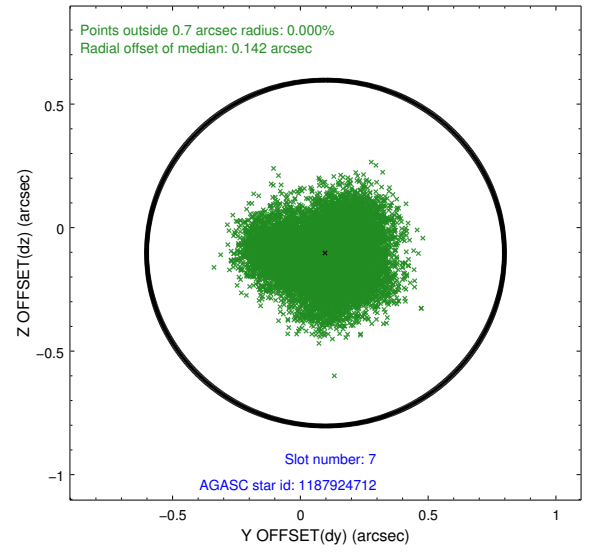
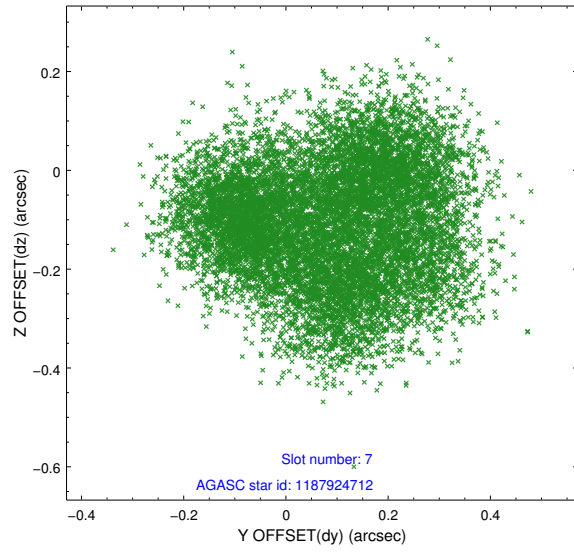
2.4.3 Slot 5



2.4.4 Slot 6

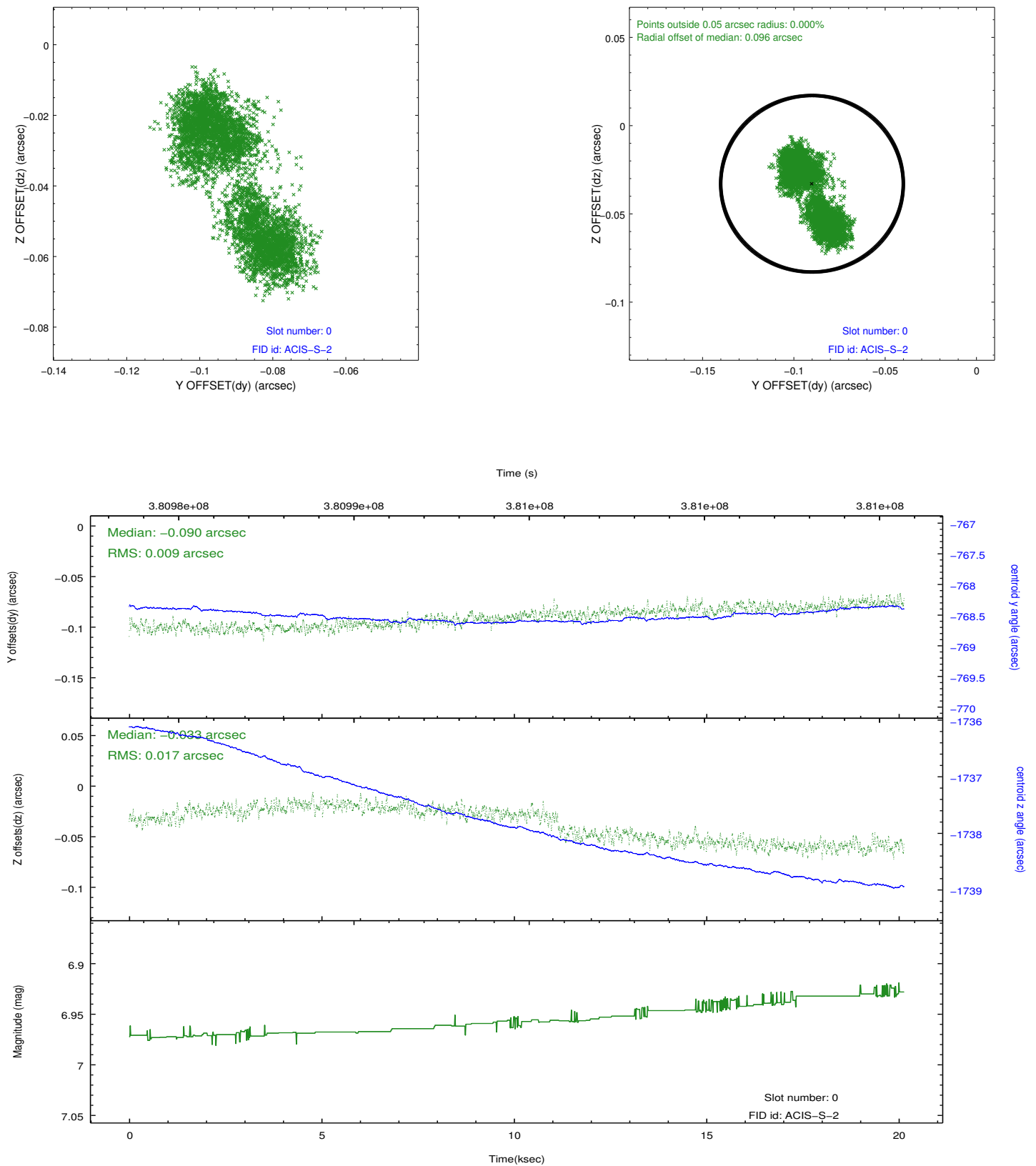


2.4.5 Slot 7

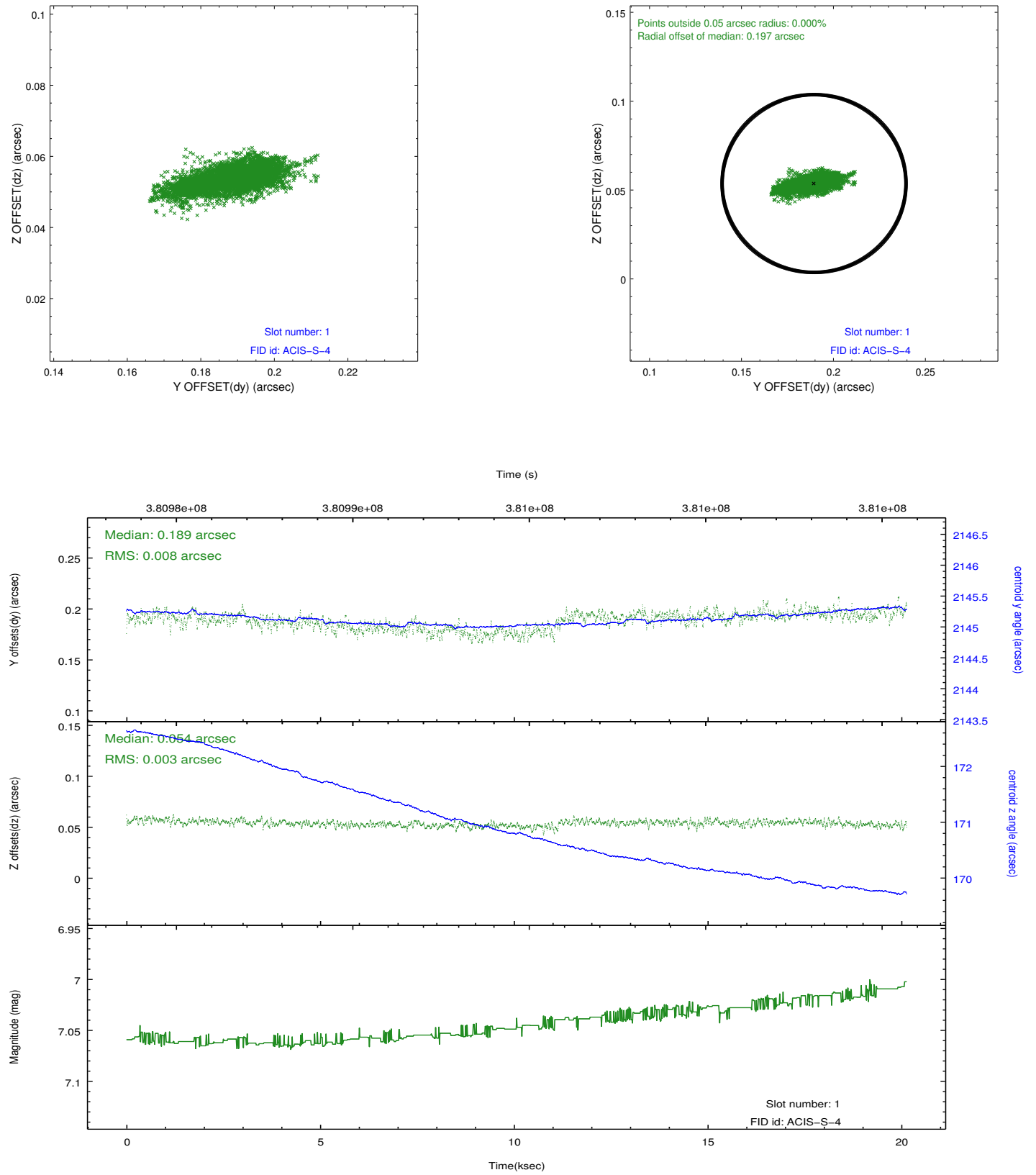


2.5 FID Slots

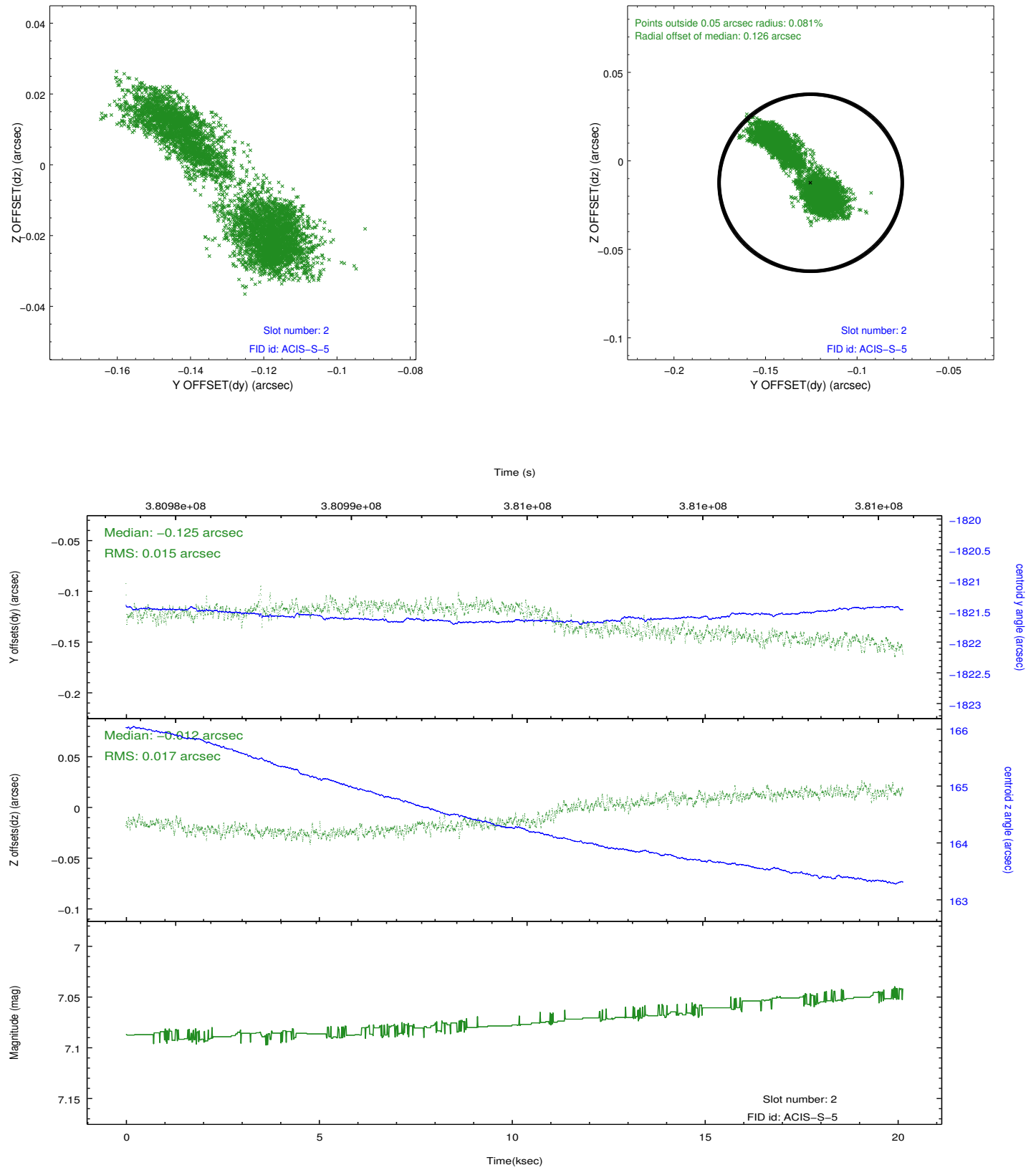
2.5.1 Slot 0



2.5.2 Slot 1



2.5.3 Slot 2



A Summary

A.1 Status

V&V Scientist	Jen Lauer
V&V Date (YYYY-MM-DD)	2012.06.26
V&V Edition	1
V&V Disposition and Status	OK
V&V Charge Time	20.131199925065

A.2 Comments