

V&V Reference Report

L2 ASCDS Version : 8.4.5

Observation 13199 - L2 Version 2
Chandra X-Ray Center

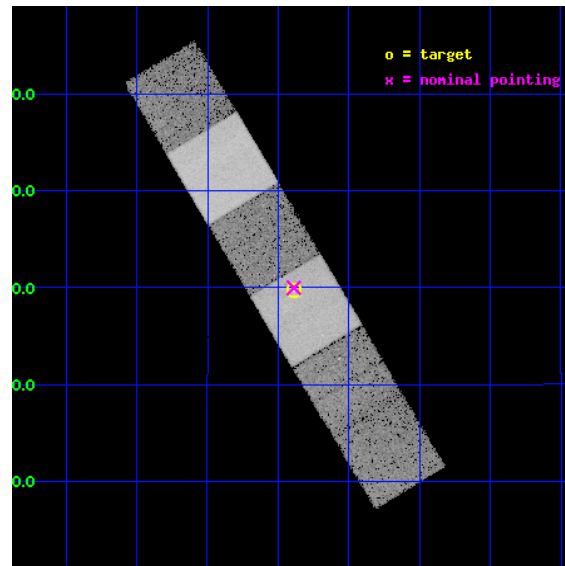
L2 Processing Date : Jul 8 2012

Contents

1	Front	2
2	OBI	3
2.1	OBI	3
2.1.1	Images	3
2.1.2	Bias	3
2.1.3	Parameters	4
2.1.4	Events	4
2.2	Compared Parameters	5
2.3	Aspect	6
2.4	Star Slots	9
2.4.1	Slot 3	9
2.4.2	Slot 4	10
2.4.3	Slot 5	11
2.4.4	Slot 6	12
2.4.5	Slot 7	13
2.5	FID Slots	14
2.5.1	Slot 0	14
2.5.2	Slot 1	15
2.5.3	Slot 2	16
A	Summary	17
A.1	Status	17
A.2	Comments	17

1 Front

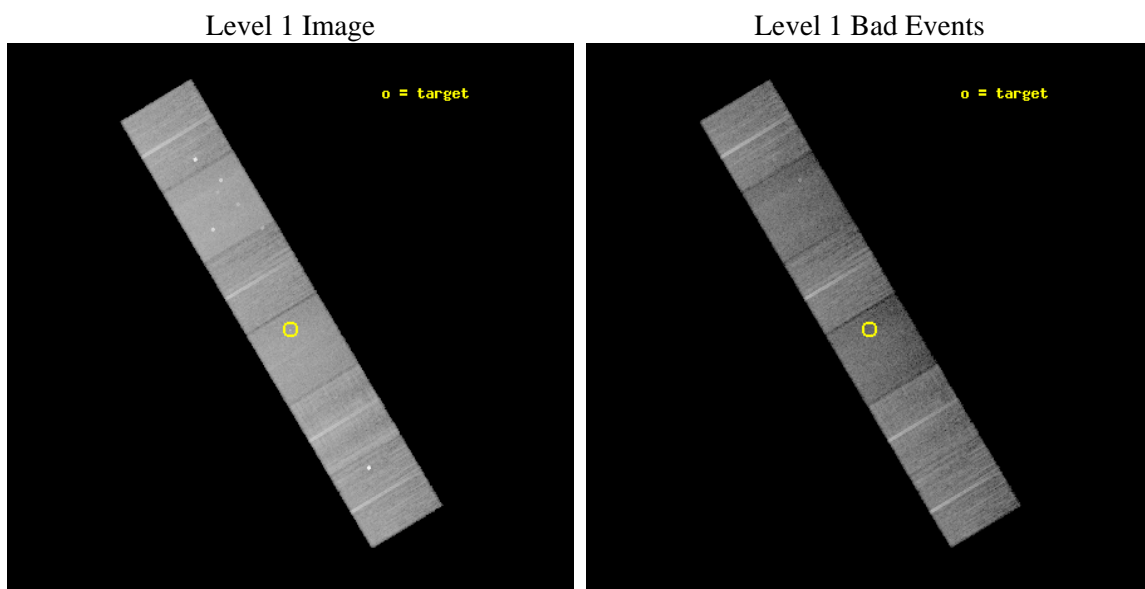
seq_num	501207	Sequence number
obs_id	13199	Observation id
title	Solving the mystery of Type II _n supernovae	Proposal title
observer	Dr. Poonam Chandra	Principal investigator
object	SN2010jl	Source name
dtcycle	0	
cycle	P	events from which exps? Prim/Second/Both
ra_targ	145.722208	Observer's specified target RA [deg]
dec_targ	9.494944	Observer's specified target Dec [deg]
ra_nom	145.72213229217	Nominal RA [deg]
dec_nom	9.4997819017142	Nominal Dec [deg]
roll_nom	59.156641409311	Nominal Roll [deg]
revision	2	Processing version of data
ontime	21045.967622578	Sum of GTIs [s]
livetime	20779.470908181	Livetime [s]
ontime4	21046.008662581	Sum of GTIs [s]
ontime5	21045.926582575	Sum of GTIs [s]
ontime6	21045.885542572	Sum of GTIs [s]
ontime7	21045.967622578	Sum of GTIs [s]
ontime8	21045.844502568	Sum of GTIs [s]
ontime9	21042.562442183	Sum of GTIs [s]
l2events	218300	Number of level 2 events



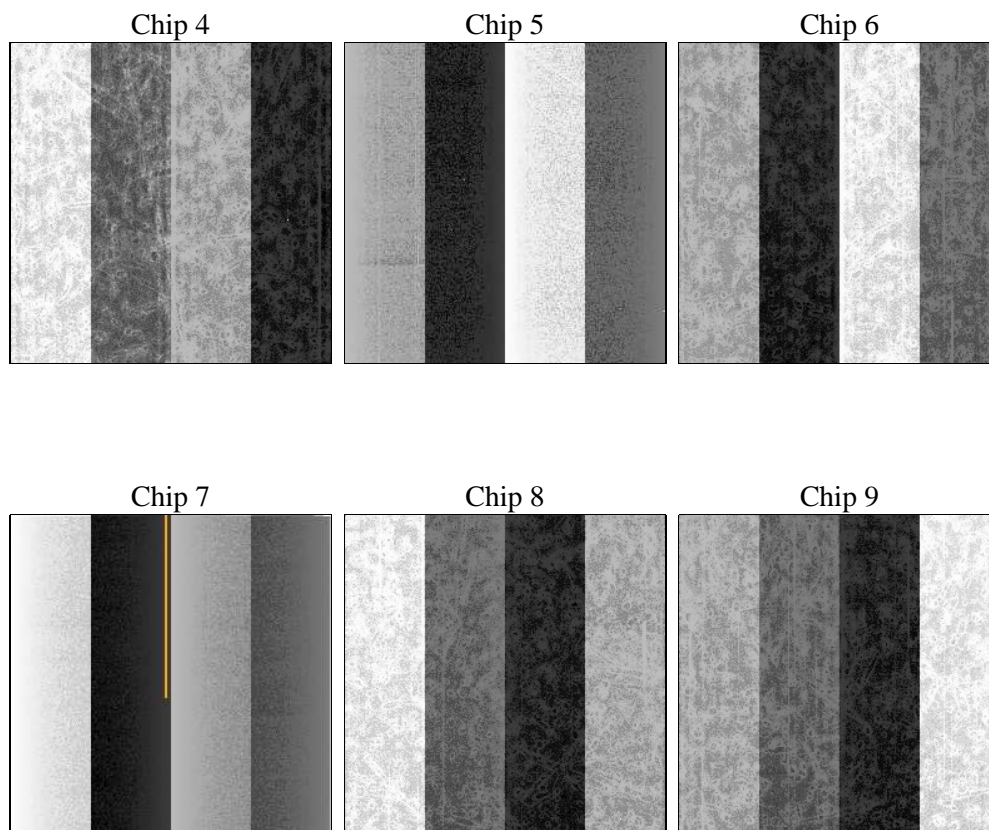
2 OBI

2.1 OBI

2.1.1 Images



2.1.2 Bias



2.1.3 Parameters

obi_num	0	Obi number	sched_exp_time	21000.000000	[s] Scheduled observation exposure time
ascdsver	8.4.5	Processing system revision	ontime	21045.967622578	Sum of GTIs [s]
caldsver	4.5.0	 	ontime4	21046.008662581	Sum of GTIs [s]
date	2012-07-08T04:32:01	Date and time of file creation	ontime5	21045.926582575	Sum of GTIs [s]
revision	2	Processing version of data	ontime6	21045.885542572	Sum of GTIs [s]
			ontime7	21045.967622578	Sum of GTIs [s]
			ontime8	21045.844502568	Sum of GTIs [s]
			ontime9	21042.562442183	Sum of GTIs [s]
			l1events	970007	Number of level 1 events

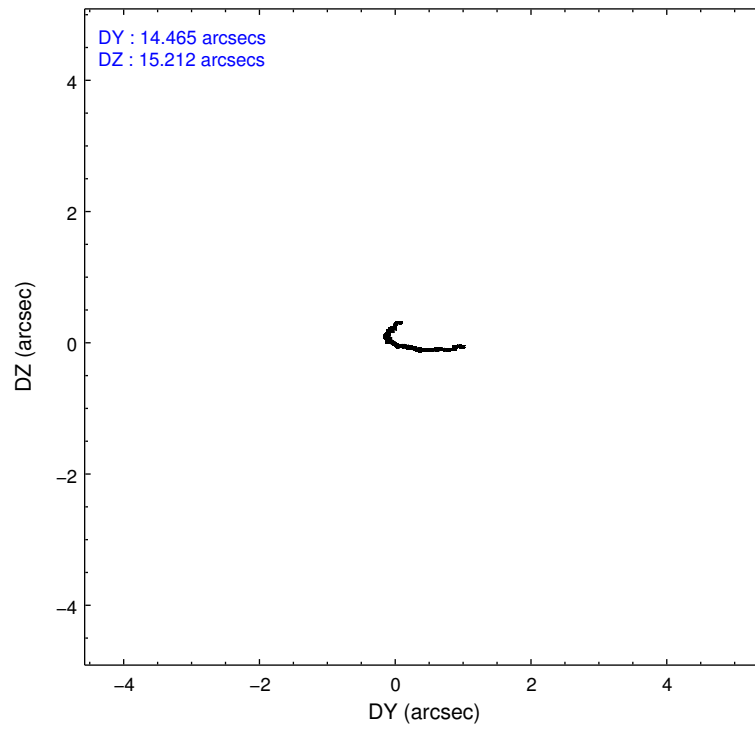
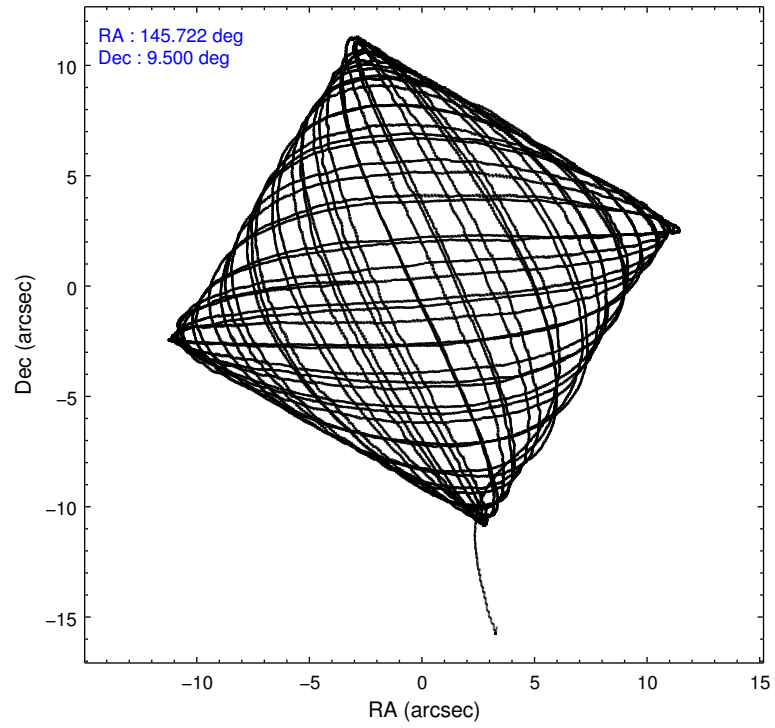
2.1.4 Events

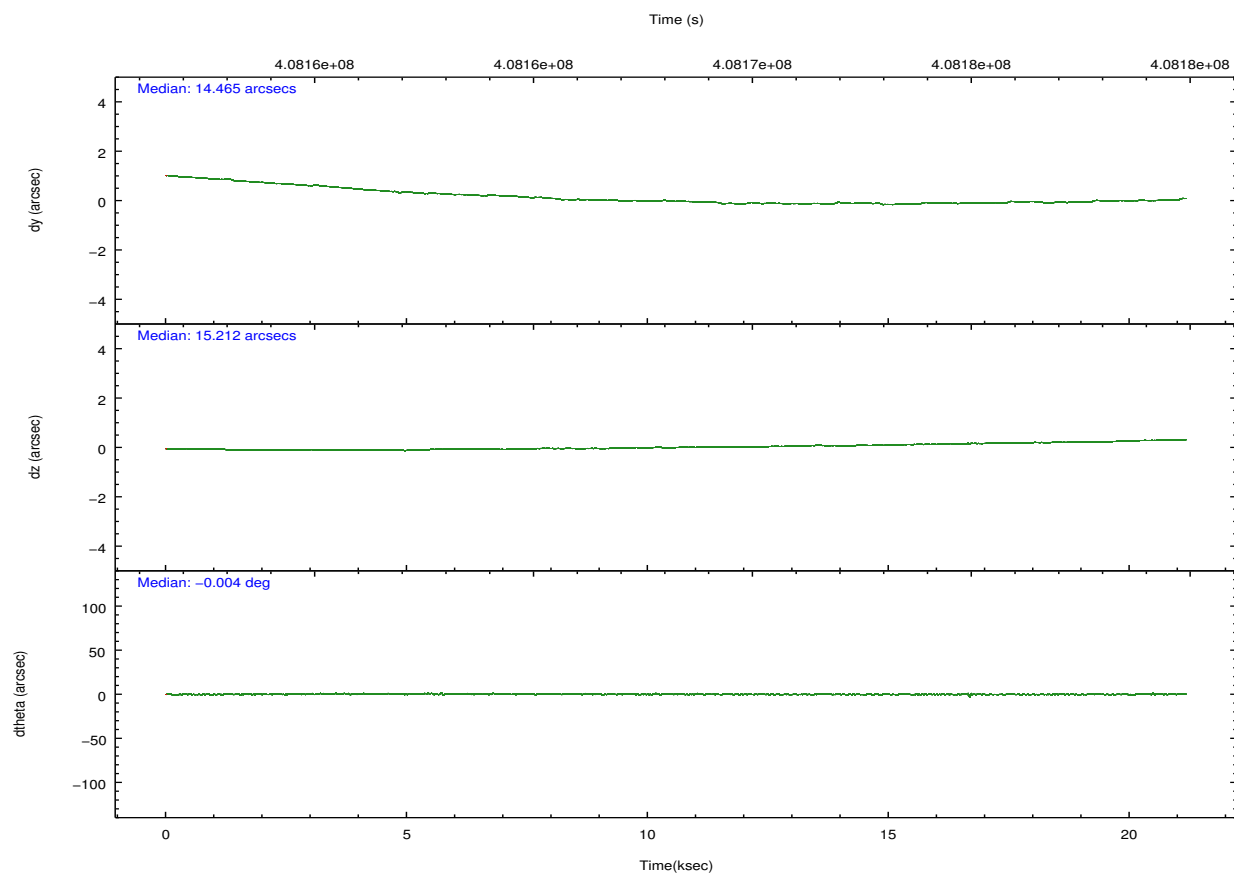
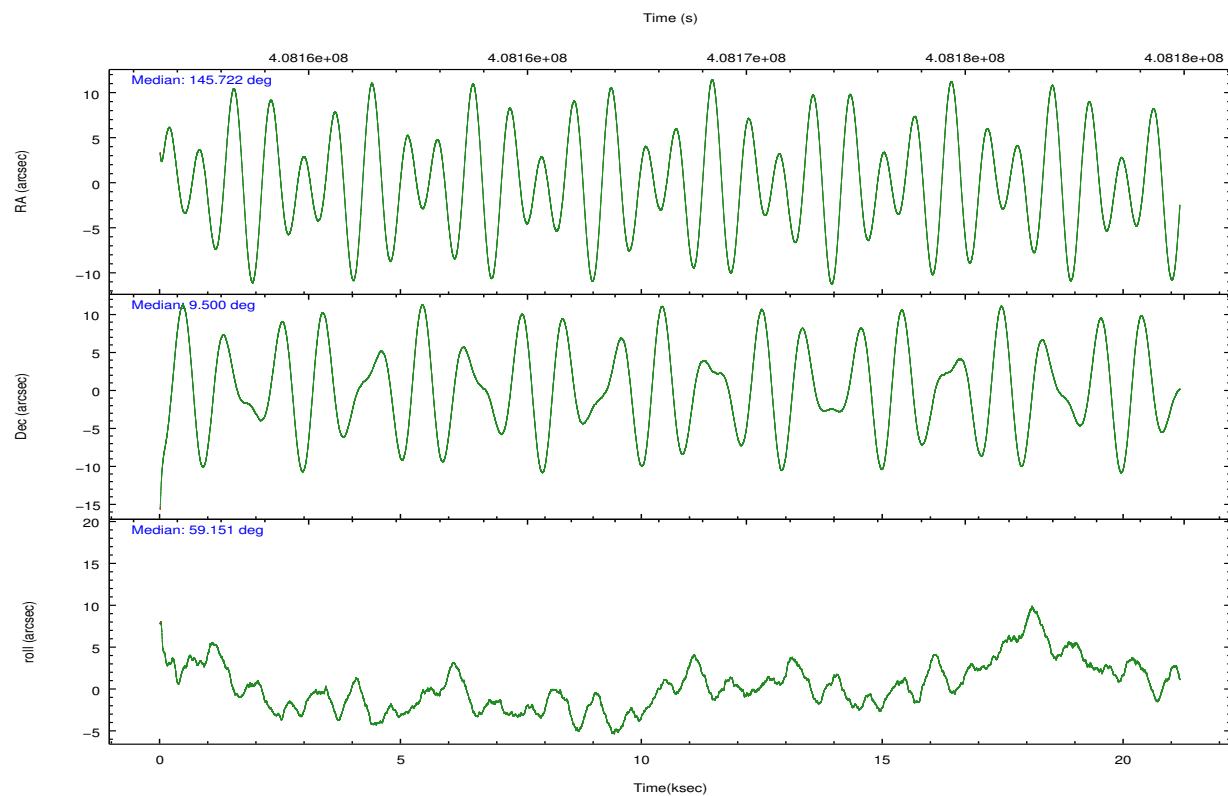
	ccd 4	ccd 5	ccd 6	ccd 7	ccd 8	ccd 9		ccd 4	ccd 5	ccd 6	ccd 7	ccd 8	ccd 9
level 1 events	165045	191767	142459	149419	175410	145907	grade 0 events	10064	9224	5617	7304	13509	11587
rejected events	144748	91424	126948	77101	127888	124276		6%	4%	3%	4%	7%	7%
rejected %	87%	47%	89%	51%	72%	85%	grade 1 events	198	655	76	233	160	104
								0%	0%	0%	0%	0%	0%
							grade 2 events	4097	31295	3426	15245	11364	3375
								2%	16%	2%	10%	6%	2%
							grade 3 events	1832	3848	1620	6473	5195	1736
								1%	2%	1%	4%	2%	1%
							grade 4 events	1731	3778	1569	6383	4787	1686
								1%	1%	1%	4%	2%	1%
							grade 5 events	5305	14617	5494	15592	8288	6245
								3%	7%	3%	10%	4%	4%
							grade 6 events	2576	52220	3282	36927	12677	3251
								1%	27%	2%	24%	7%	2%
							grade 7 events	139242	76130	121375	61262	119430	117923
								84%	39%	85%	41%	68%	80%

2.2 Compared Parameters

Parameter	Planned	Actual	Parameter	Planned	Actual
Instrument	ACIS	ACIS	Obspar format version number	7	7
Detector	ACIS-456789	ACIS-456789	Obspar file type	PREDICTED	ACTUAL
Grating	NONE	NONE	Obspar update status	NONE	UPDATED
Data mode	VFAINT	VFAINT	CCD I0 on	N	N
Observation mode	POINTING	POINTING	CCD I1 on	N	N
[deg] Pointing RA	145.722101	145.7221322921683	CCD I2 on	N	N
[deg] Pointing Dec	9.472447	9.499781901714234	CCD I3 on	N	N
[deg] Pointing Roll	59.000018	59.15664140931073	CCD S0 on	O2	Y
[mm] SIM focus pos	-0.684267	-0.6828225247311905	CCD S1 on	Y	Y
[mm] SIM defocus	0	0.001444936568705701	CCD S2 on	Y	Y
[mm] SIM translation stage pos	-190.132523	-190.1400660498719	CCD S3 on	Y	Y
[mm] SIM translation stage offset	0	0.00754346686406393	CCD S4 on	Y	Y
[s] Observation start time (MET)	408157844.184000	408156686.07823	CCD S5 on	O1	Y
Observation start date	2010-12-08T01:09:38	2010-12-08T00:51:26	Number of optional ACIS chips dropped	0	0
[s] Observation end time (MET)	408178844.184000	408179799.82942	On-chip summing requested	N	N
Observation end date	2010-12-08T06:59:38	2010-12-08T07:16:39	Subarray requested	NONE	NONE
Read mode	TIMED	TIMED	Alternating exposures requested	N	N
			[s] Primary exposure time	0.000000	3.2

2.3 Aspect



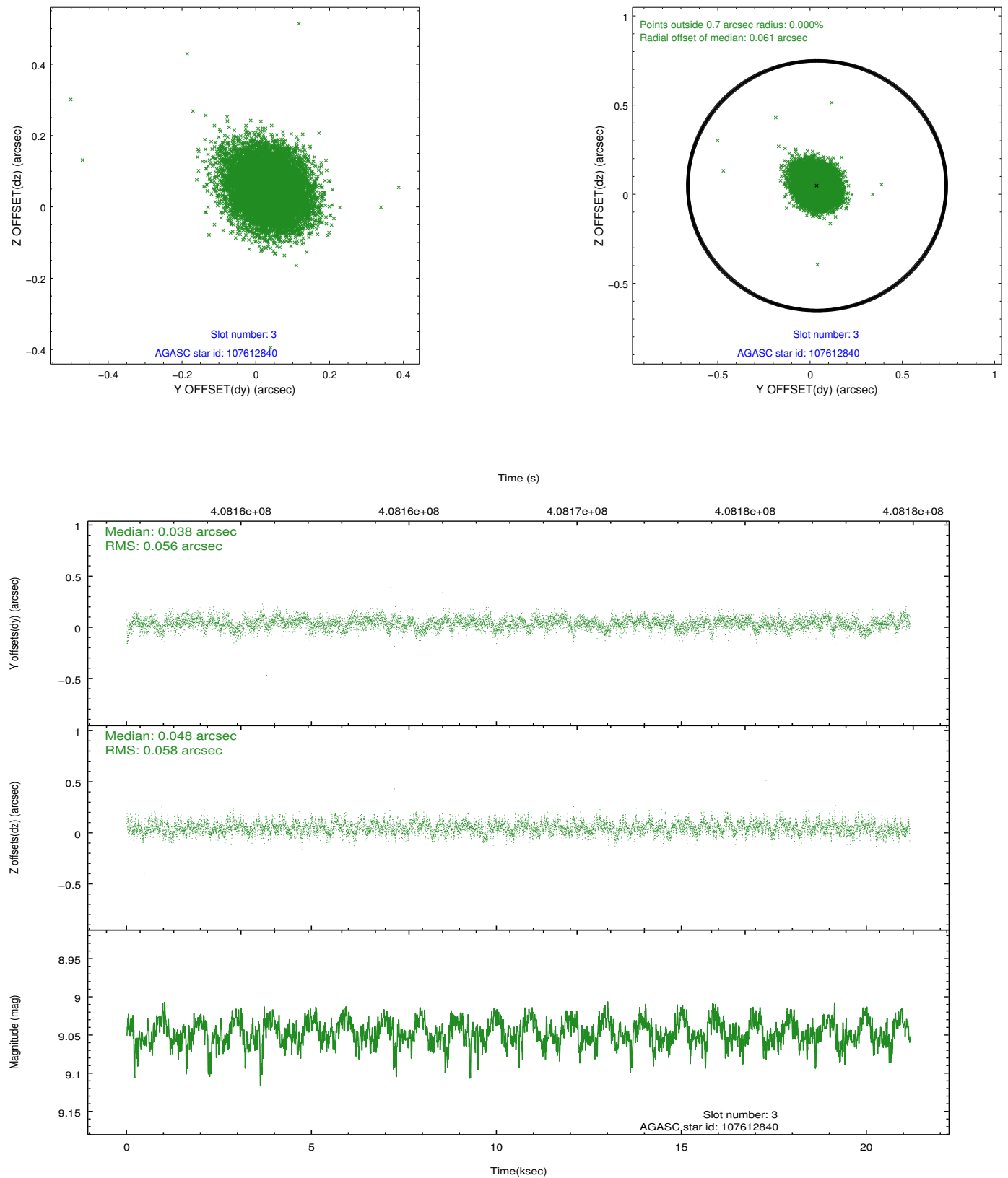


Slot Statistics

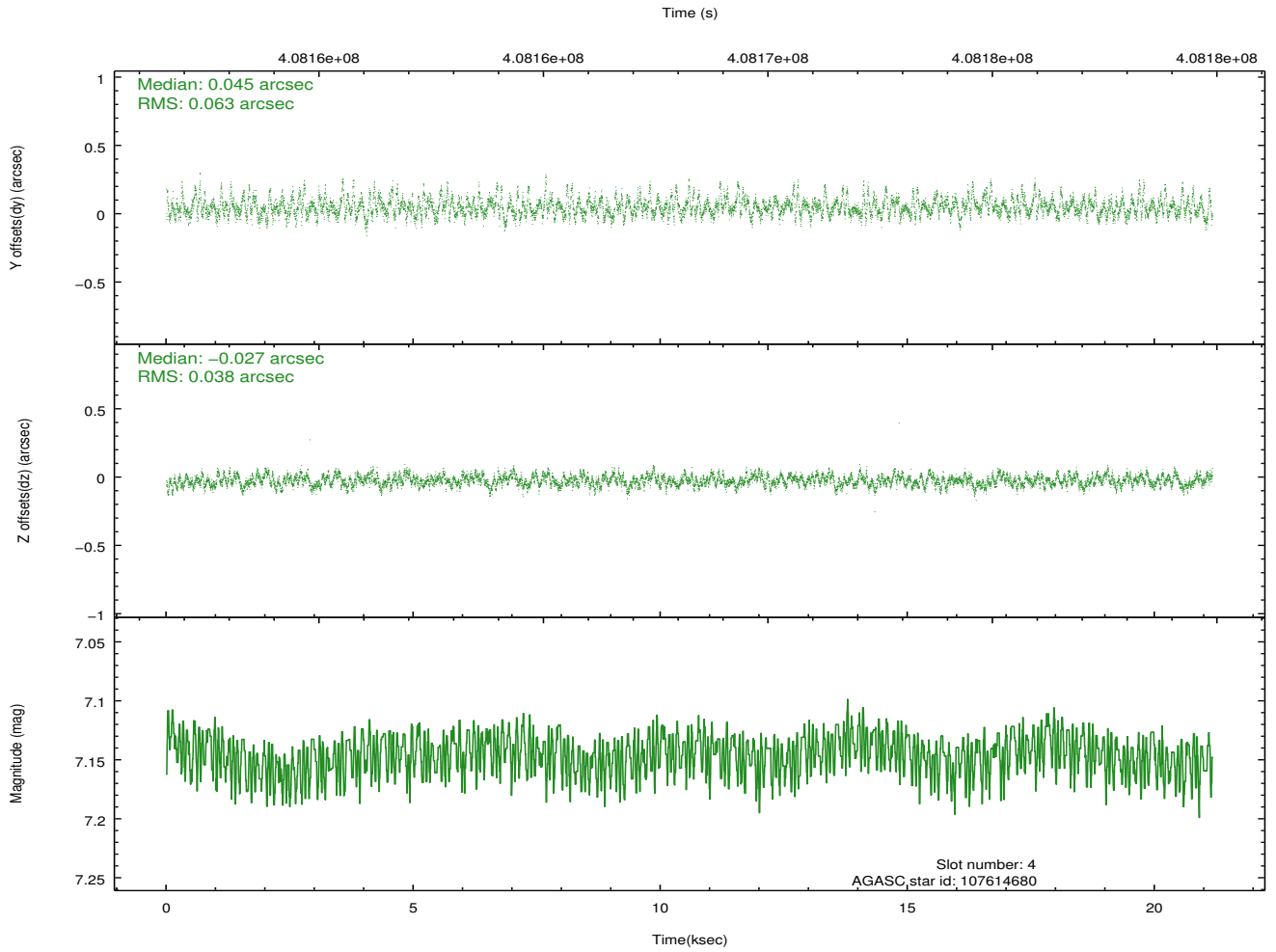
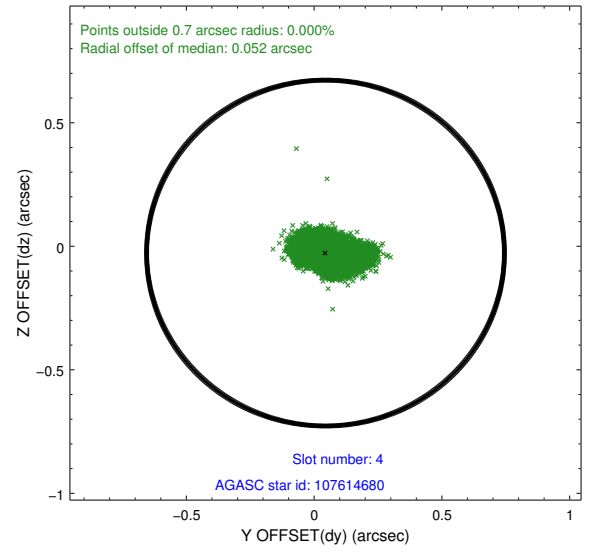
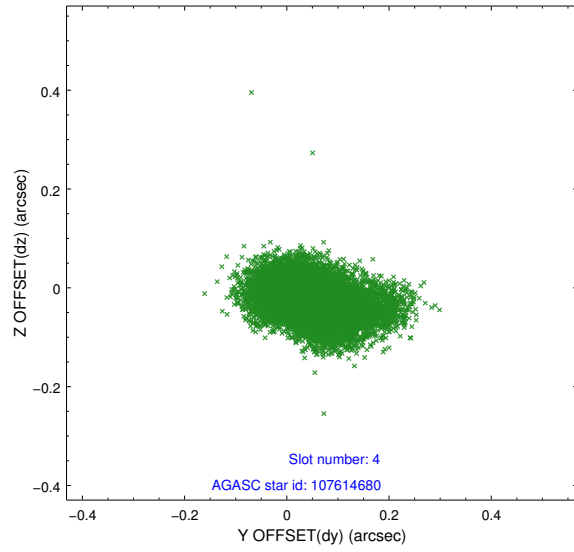
slot	status	id	mag	n_pts	med_dy	med_dz	dr1	dr2	ra	dec	mean_y	mean_z
0	FID	ACIS-S-2	7.01	5163	-0.097	-0.031	0.011	0.018	0.000000	0.000000	-767.66	-1736.66
1	FID	ACIS-S-4	7.09	5163	0.225	0.055	0.008	0.014	0.000000	0.000000	2145.85	171.75
2	FID	ACIS-S-5	7.12	5162	-0.161	-0.016	0.011	0.026	0.000000	0.000000	-1820.36	165.51
3	GUIDE	107612840	9.05	10317	0.038	0.048	0.085	0.137	145.374441	9.465044	-658.24	1045.20
4	GUIDE	107614680	7.15	10324	0.045	-0.027	0.075	0.134	145.310964	8.995416	-2224.71	369.18
5	GUIDE	107617024	8.33	10255	-0.013	-0.203	0.078	0.127	145.130994	9.426697	-1221.10	1715.53
6	GUIDE	107618792	8.88	10321	-0.133	-0.346	0.090	0.146	144.990311	9.510841	-1218.00	2299.54
7	GUIDE	108531080	8.75	10322	0.060	0.527	0.099	0.151	145.751319	8.809136	-1993.15	-1318.13

2.4 Star Slots

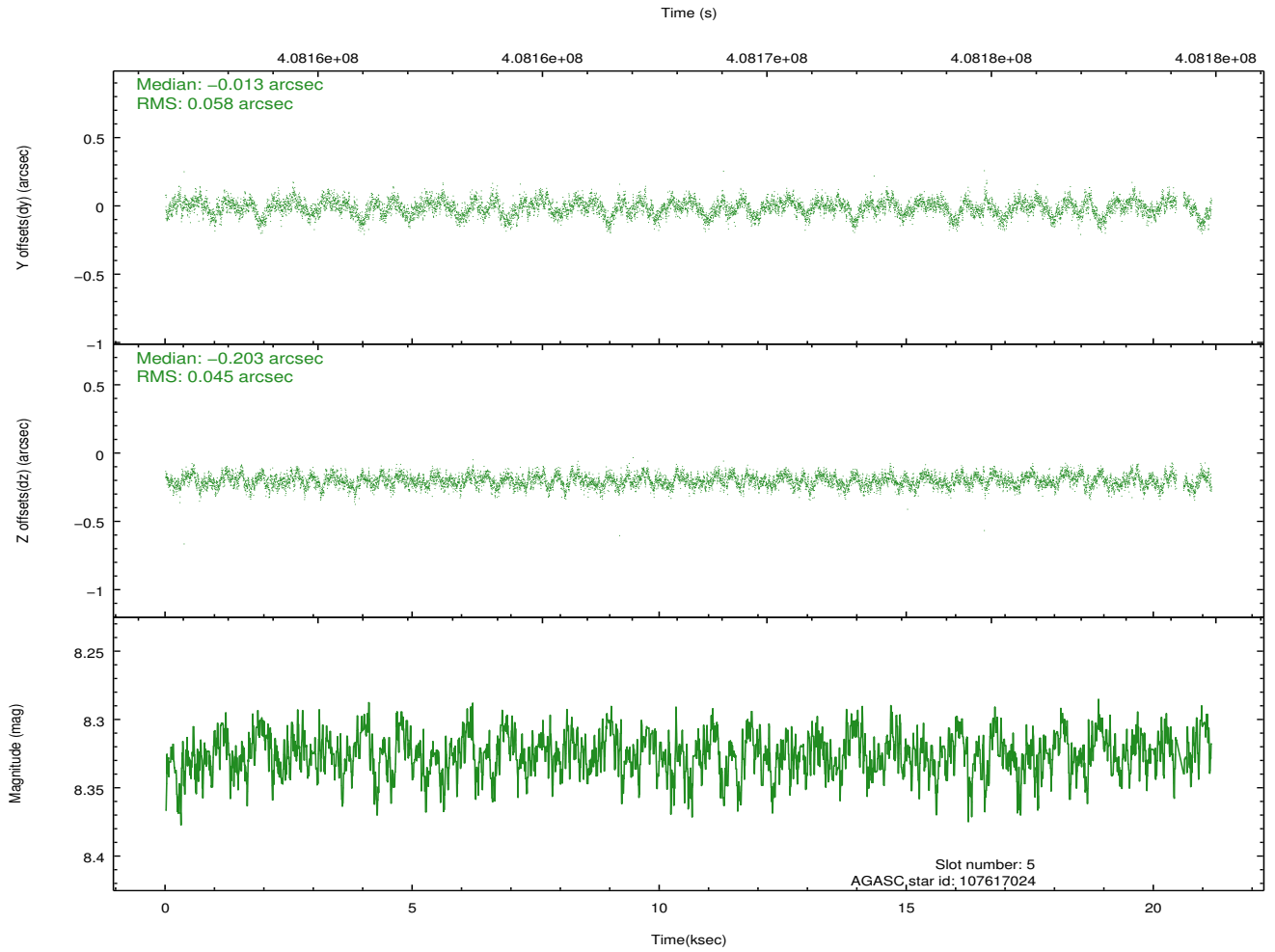
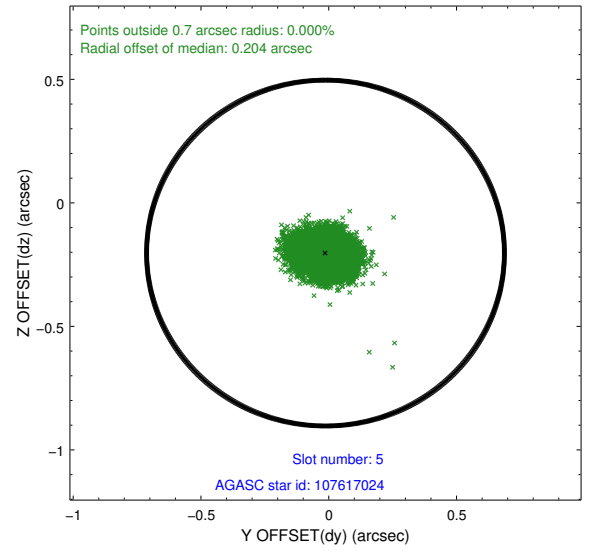
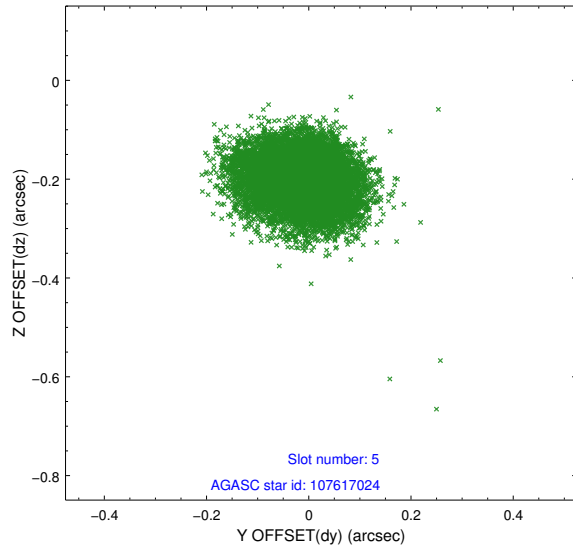
2.4.1 Slot 3



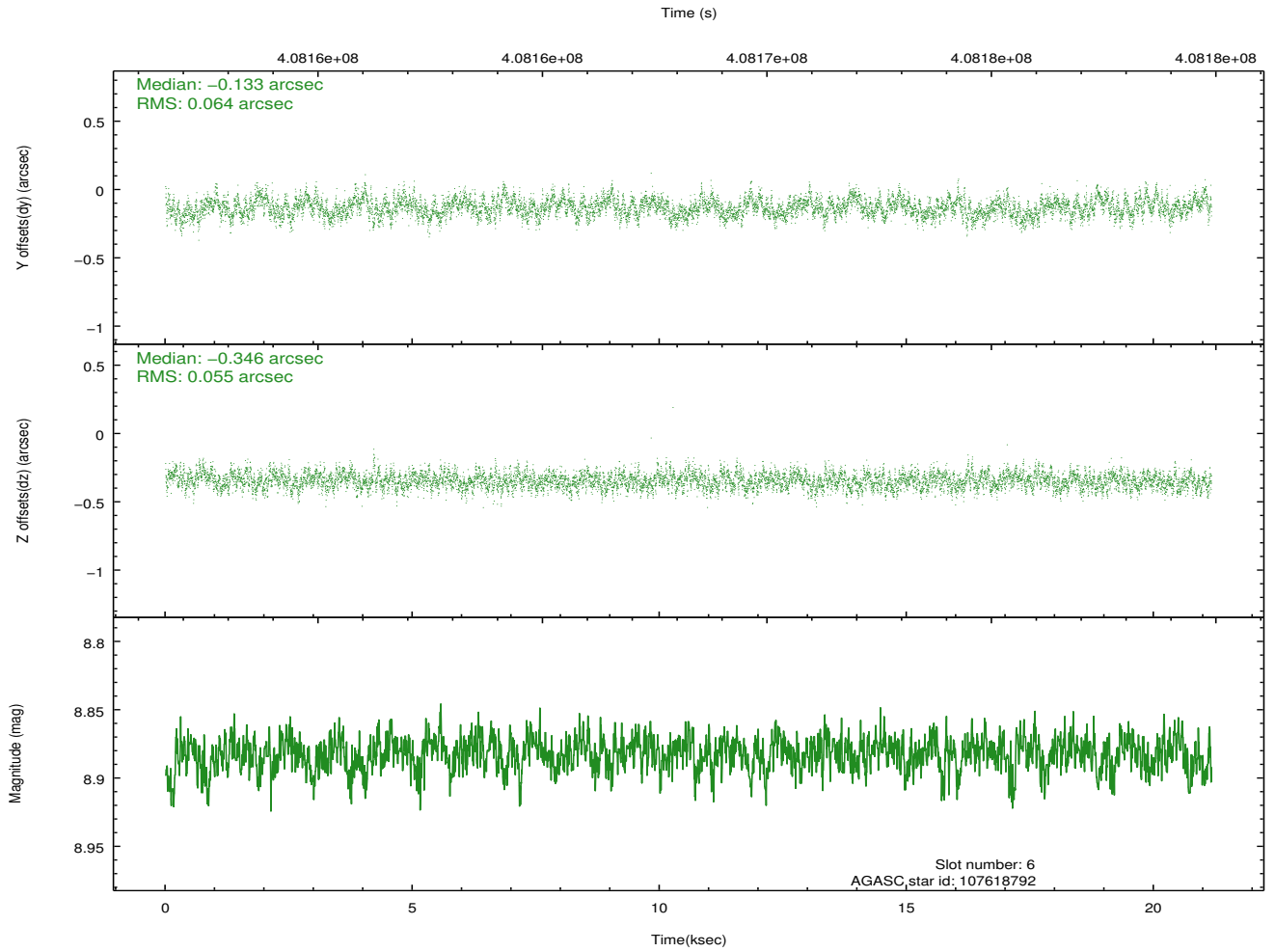
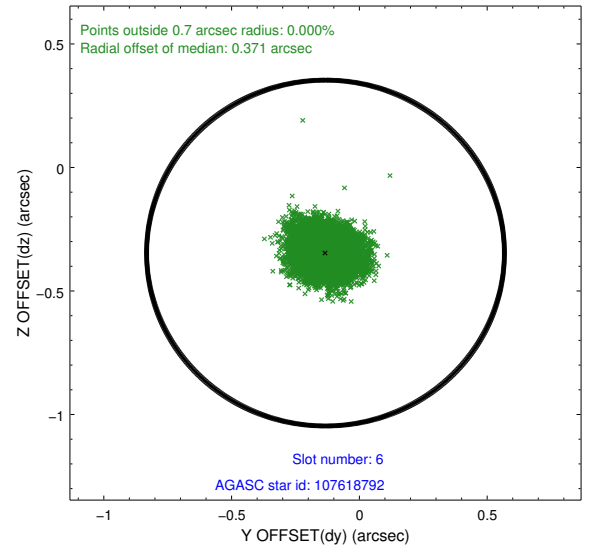
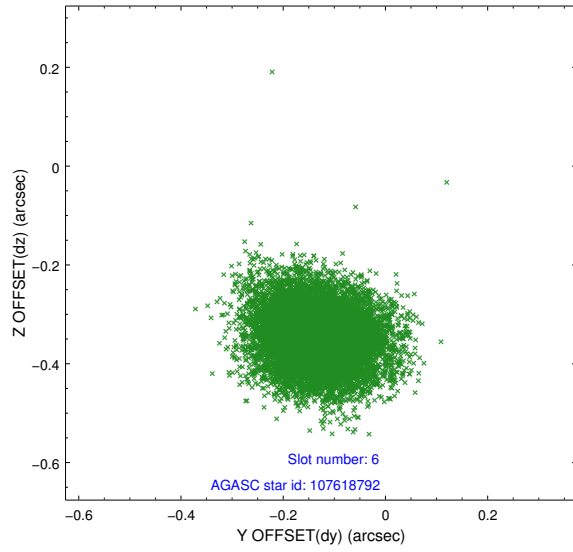
2.4.2 Slot 4



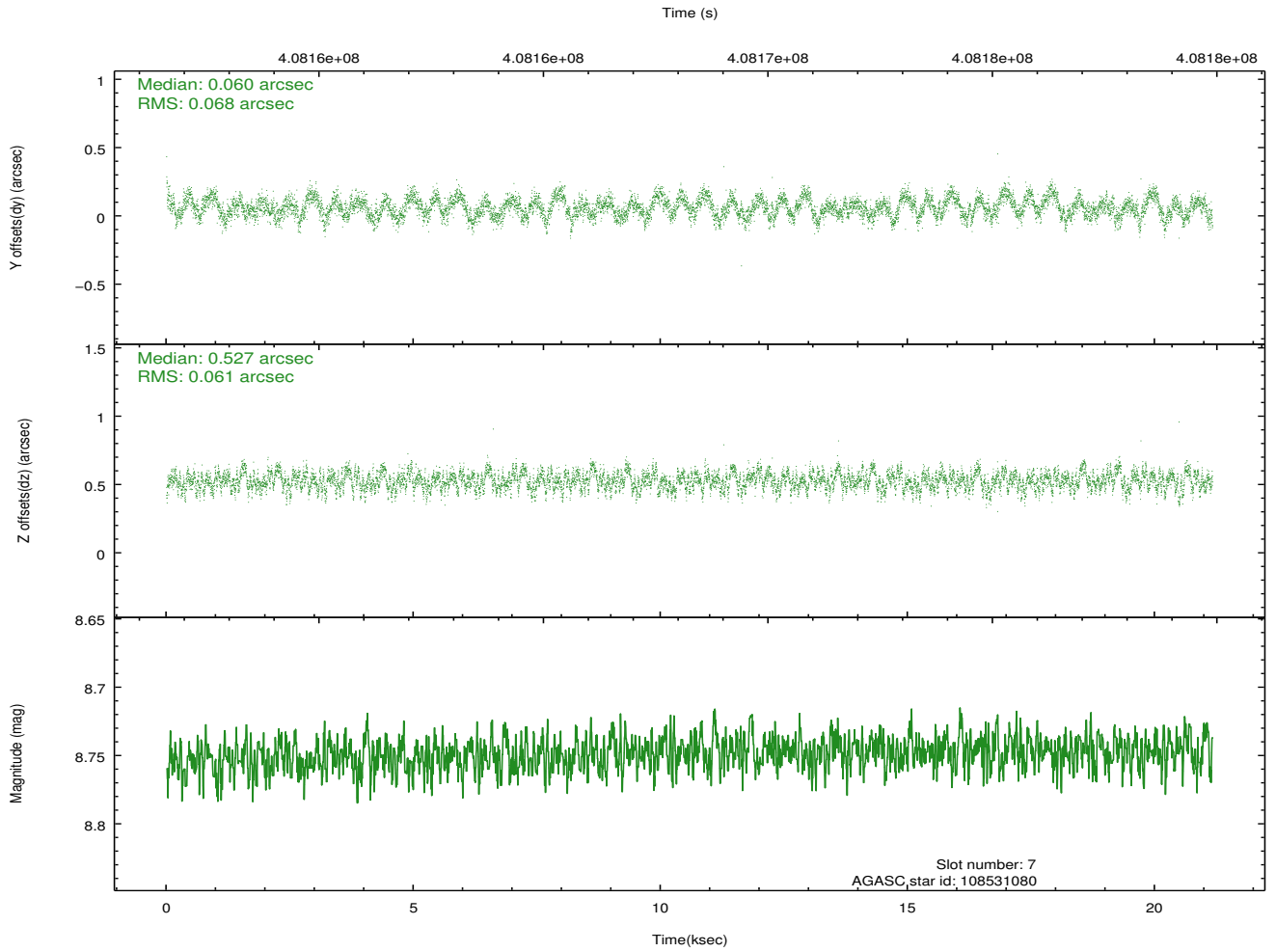
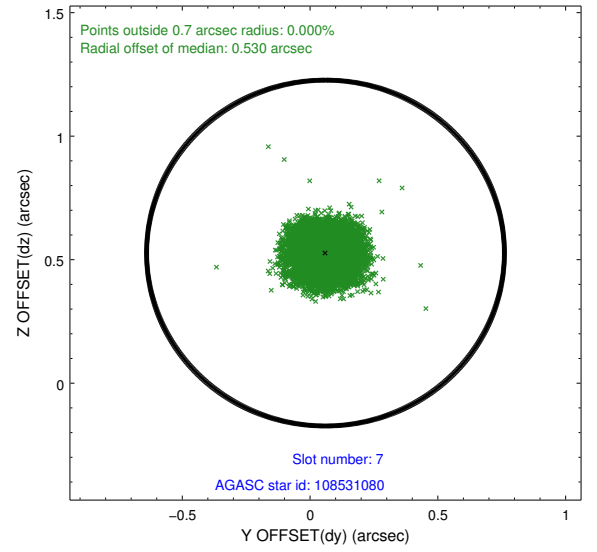
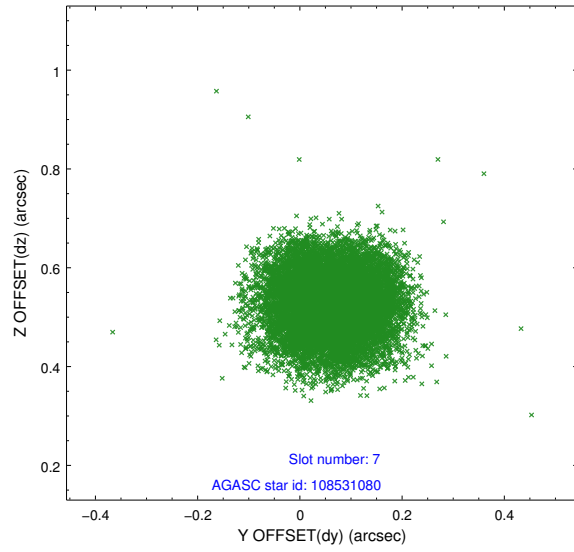
2.4.3 Slot 5



2.4.4 Slot 6

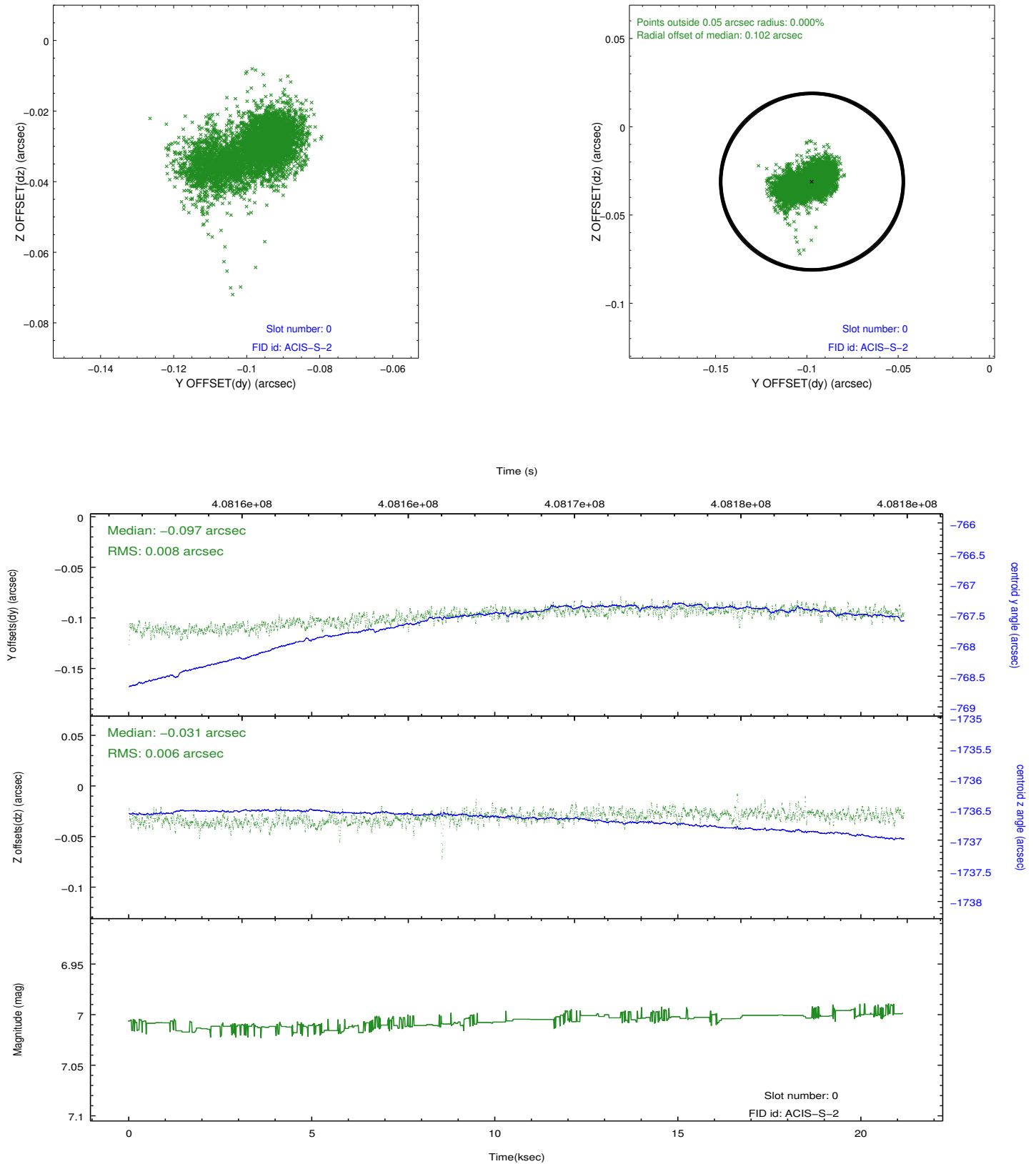


2.4.5 Slot 7

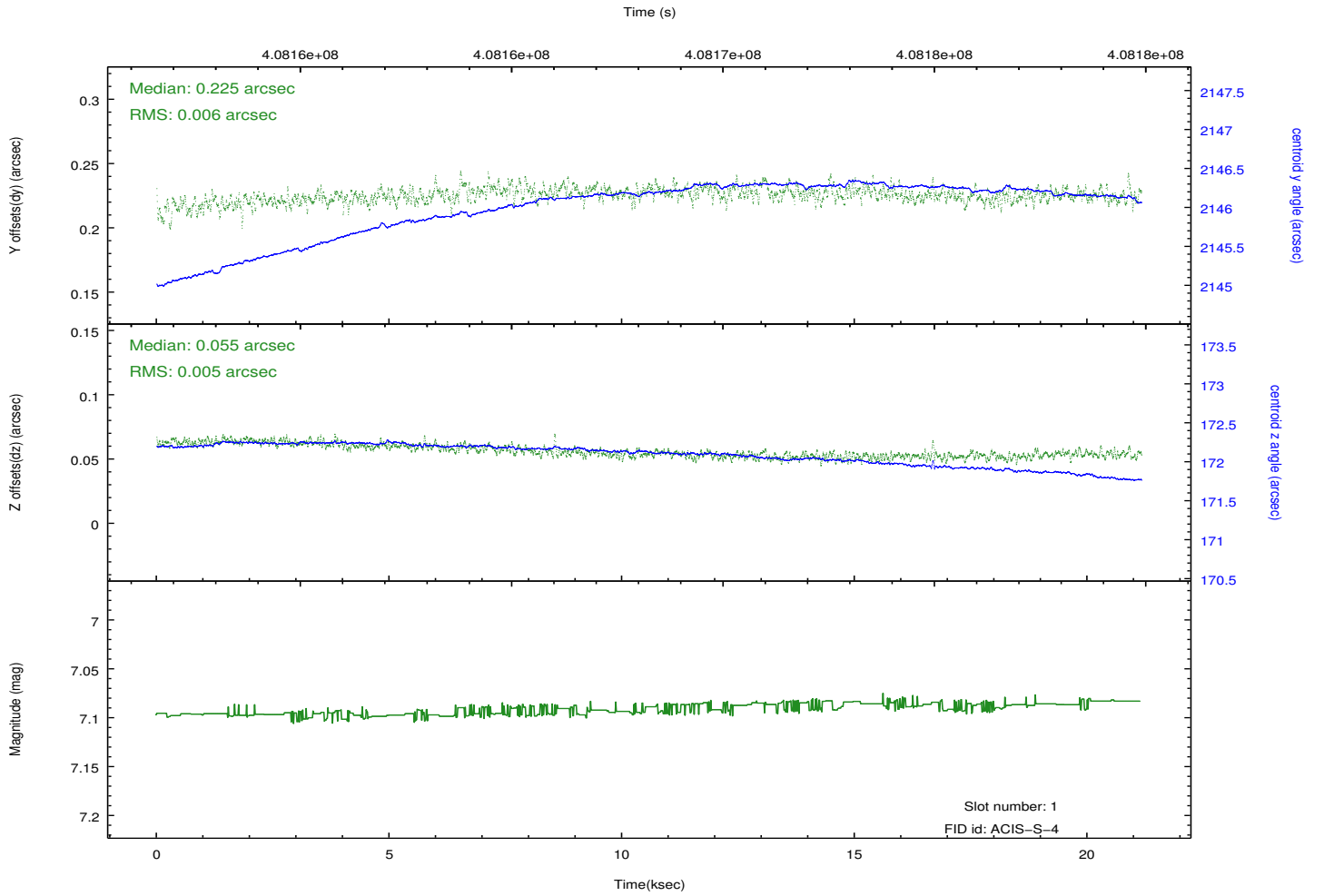
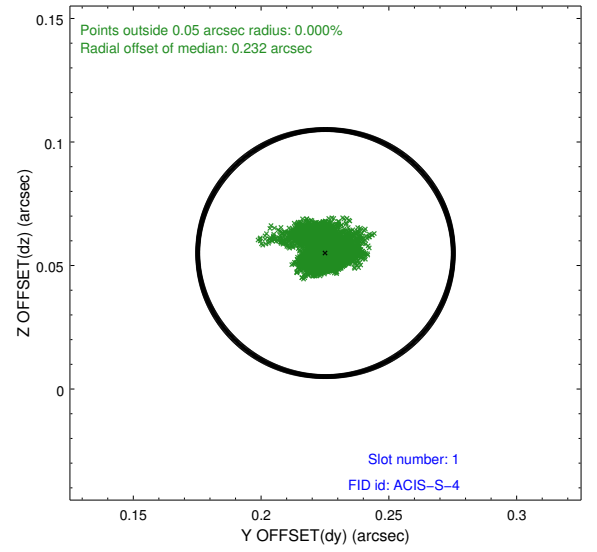
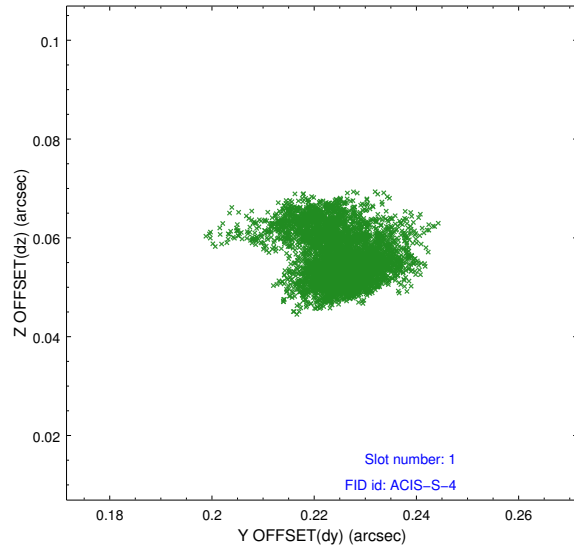


2.5 FID Slots

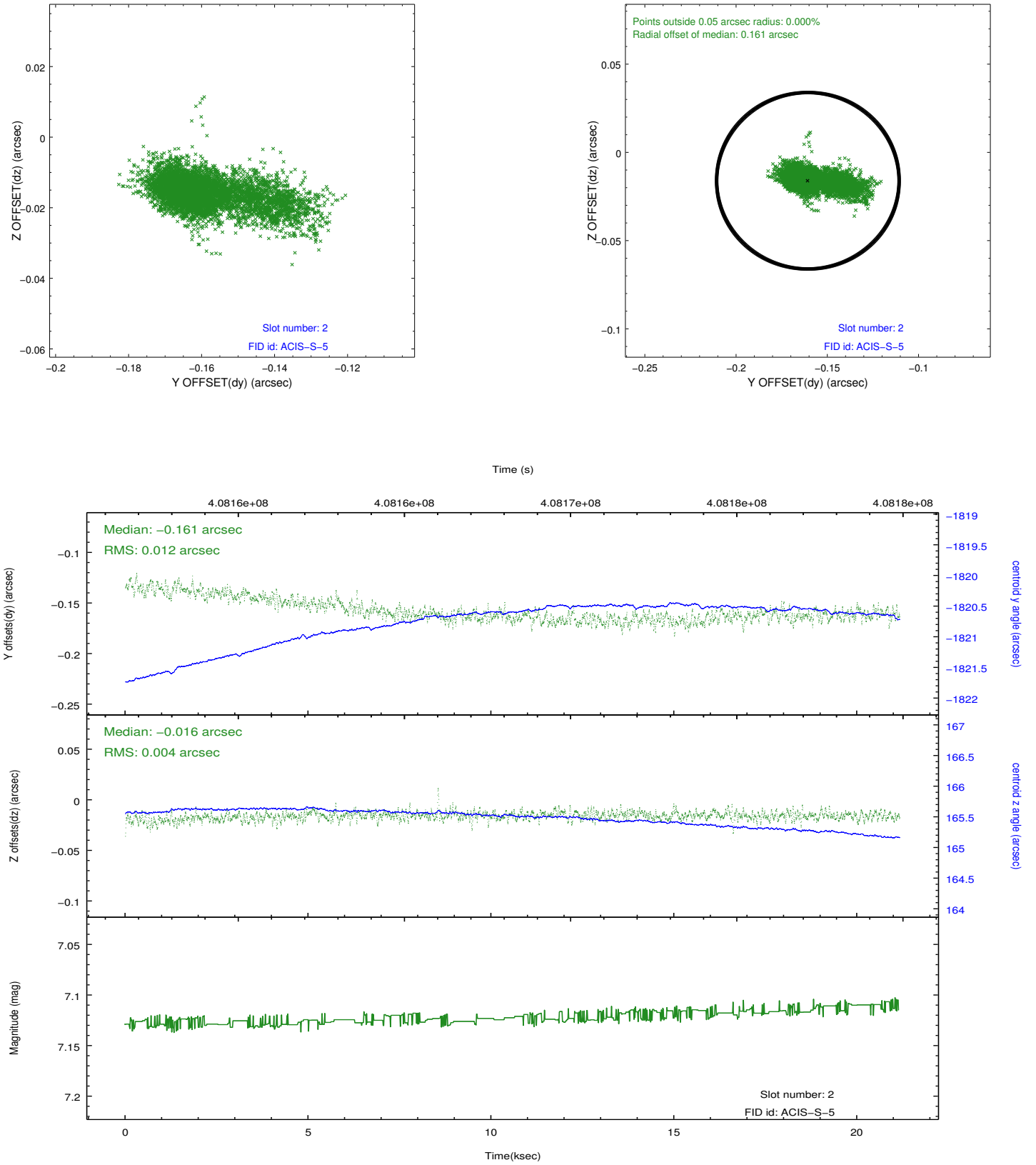
2.5.1 Slot 0



2.5.2 Slot 1



2.5.3 Slot 2



A Summary

A.1 Status

V&V Scientist	Jen Lauer
V&V Date (YYYY-MM-DD)	2012.07.17
V&V Edition	1
V&V Disposition and Status	OK
V&V Charge Time	21.04596762532

A.2 Comments